

Data Path : Z:\VOASRV\HPCHEM1\MSVOA D\DATA\VD111120\
 Data File : VD067595.D
 Acq On : 11 Nov 2020 11:57
 Operator : VA/SY
 Sample : L4702-01
 Misc : 7.06G/5.00ml/MSVOA D/SOIL
 ALS Vial : 6 Sample Multiplier: 1

Instrument :
 MSVOA_D
 ClientSampled :
 M-5(0-10)

Integration Parameters: RTEINT.P

Integrator: RTE
 Smoothing : ON Filtering: 5
 Sampling : 1 Min Area: 3 % of largest Peak
 Start Thrs: 0.2 Max Peaks: 100
 Stop Thrs : 0 Peak Location: TOP

If leading or trailing edge < 100 prefer < Baseline drop else tangent >
 Peak separation: 5

Method : Z:\VOASRV\HPCHEM1\MSVOA_D\METHOD\82D110320S.M
 Title : SW846 8260

Signal : TIC

peak #	R.T. min	first scan	max scan	last scan	PK TY	peak height	corr. area	corr. % max.	% of total
1	7.920	1007	1020	1025	rBV2	213628	525981	36.05%	5.944%
2	7.985	1025	1031	1041	rVB	378475	836560	57.34%	9.454%
3	8.338	1079	1091	1102	rBV	172995	401476	27.52%	4.537%
4	8.867	1173	1181	1196	rBV	491305	1026161	70.33%	11.597%
5	10.344	1424	1432	1441	rBV	798351	1423160	97.54%	16.083%
6	11.649	1646	1654	1665	rBV	813931	1351365	92.62%	15.272%
7	12.638	1811	1822	1833	rVB	678118	1111772	76.20%	12.564%
8	13.579	1975	1982	1990	rBV	897661	1458996	100.00%	16.488%
9	14.826	2187	2194	2200	rBV6	13028	28497	1.95%	0.322%
10	15.102	2236	2241	2248	rBV4	17576	41540	2.85%	0.469%
11	15.208	2253	2259	2266	rVV6	12036	23003	1.58%	0.260%
12	15.402	2288	2292	2300	rVB3	11459	21259	1.46%	0.240%
13	15.508	2304	2310	2315	rBV5	9641	16431	1.13%	0.186%
14	15.602	2321	2326	2330	rVB4	31514	50604	3.47%	0.572%
15	15.708	2334	2344	2349	rBV9	14056	33869	2.32%	0.383%
16	16.002	2388	2394	2399	rBV4	11320	20906	1.43%	0.236%
17	16.149	2414	2419	2423	rBV5	8793	15640	1.07%	0.177%
18	16.202	2423	2428	2435	rBV9	15897	26120	1.79%	0.295%
19	16.284	2436	2442	2446	rVB6	16020	30367	2.08%	0.343%
20	16.349	2448	2453	2458	rBV4	20157	37734	2.59%	0.426%
21	16.496	2473	2478	2482	rBV4	14158	25924	1.78%	0.293%
22	16.561	2482	2489	2496	rBV2	148515	281178	19.27%	3.178%
23	16.679	2503	2509	2511	rBV4	17145	33005	2.26%	0.373%
24	16.737	2517	2519	2525	rVB6	17975	27204	1.86%	0.307%

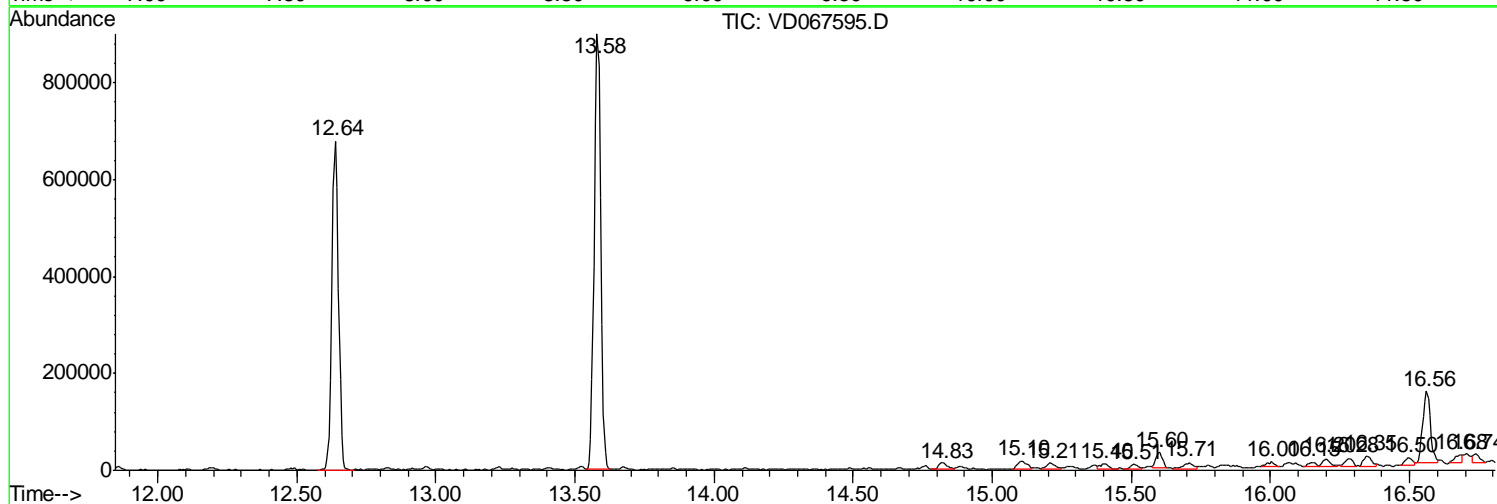
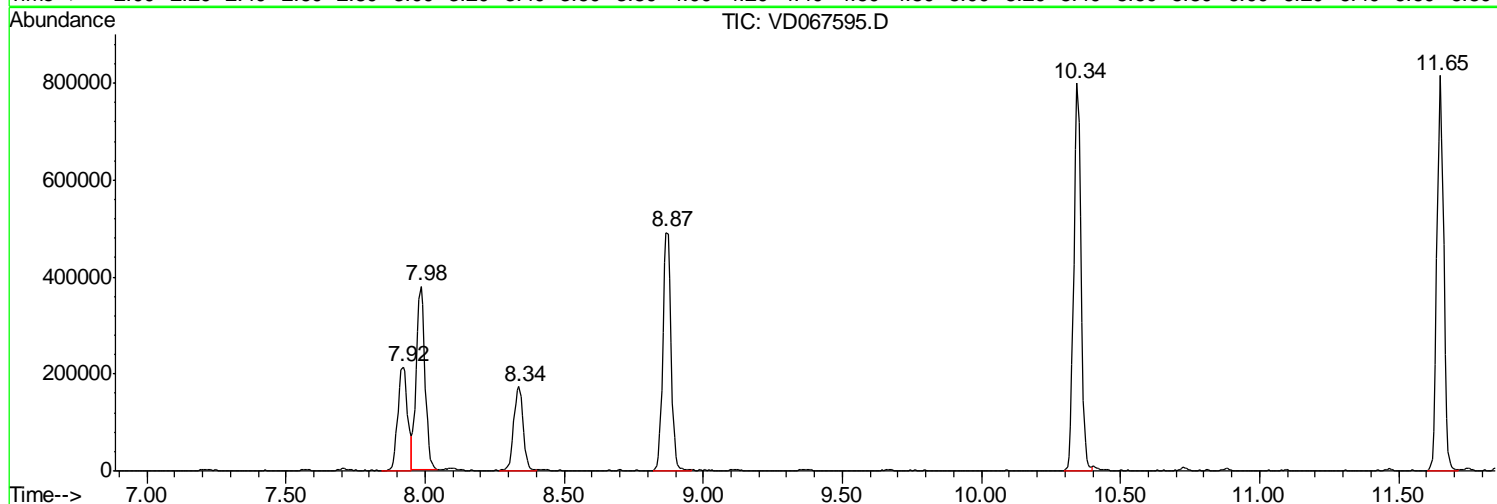
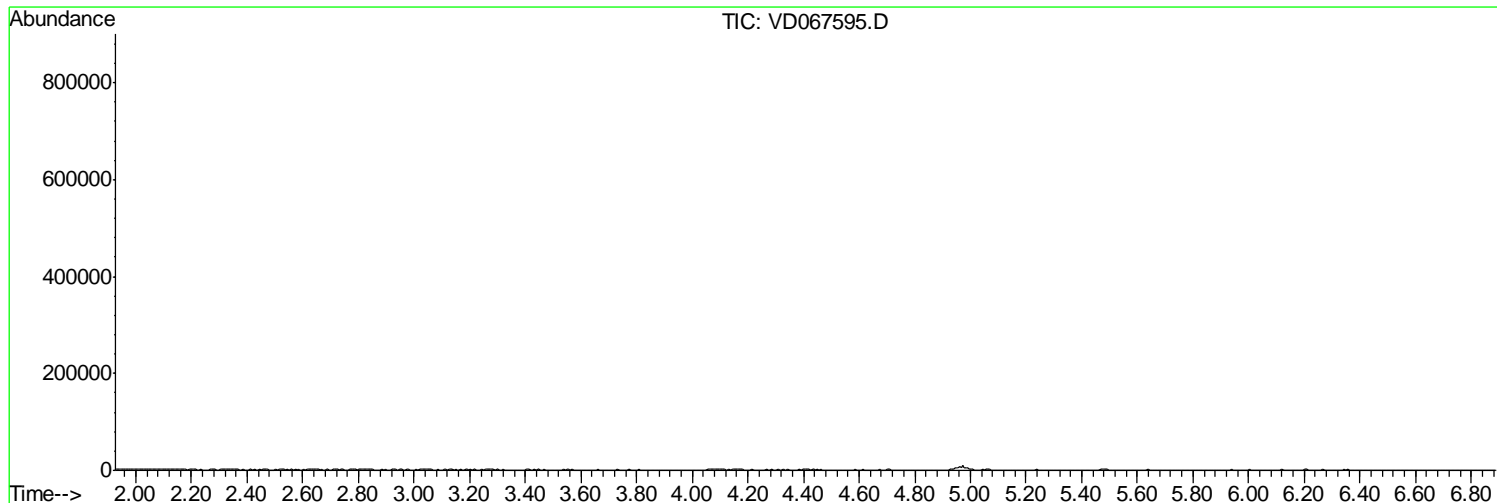
Sum of corrected areas: 8848752

Data Path : Z:\VOASRV\HPCHEM1\MSVOA D\DATA\VD111120\
 Data File : VD067595.D
 Acq On : 11 Nov 2020 11:57
 Operator : VA/SY
 Sample : L4702-01
 Misc : 7.06G/5.00ml/MSVOA D/SOIL
 ALS Vial : 6 Sample Multiplier: 1

Instrument :
 MSVOA_D
 ClientSampleId :
 M-5(0-10)

Quant Method : Z:\VOASRV\HPCHEM1\MSVOA_D\METHOD\82D110320S.M
 Quant Title : SW846 8260

TIC Library : C:\DATABASE\NIST11.L
 TIC Integration Parameters: LSCINT.P



Data Path : Z:\VOASRV\HPCHEM1\MSVOA_D\DATA\VD111120\
Data File : VD067595.D
Acq On : 11 Nov 2020 11:57
Operator : VA/SY
Sample : L4702-01
Misc : 7.06G/5.00ml/MSVOA_D/SOIL
ALS Vial : 6 Sample Multiplier: 1

Instrument :
MSVOA_D
ClientSampleId :
M-5(0-10)

Quant Method : Z:\VOASRV\HPCHEM1\MSVOA_D\METHOD\82D110320S.M
Quant Title : SW846 8260

TIC Library : C:\DATABASE\NIST11.L
TIC Integration Parameters: LSCINT.P

Peak Number 1 Tetradecane Concentration Rank 1

R.T.	EstConc	Area	Relative to ISTD	R.T.
16.56	9.64 ug/l	281178	1,4-Dichlorobenzene-d4	13.58

Hit#	of	5	Tentative ID	MW	MolForm	CAS#	Qual
1			Tetradecane	198	C14H30	000629-59-4	97
2			Nonadecane	268	C19H40	000629-92-5	90
3			Hexadecane	226	C16H34	000544-76-3	90
4			Tridecane	184	C13H28	000629-50-5	86
5			Dodecane, 2-methyl-	184	C13H28	001560-97-0	72

Data Path : Z:\VOASRV\HPCHEM1\MSVOA_D\DATA\VD111120\
Data File : VD067595.D
Acq On : 11 Nov 2020 11:57
Operator : VA/SY
Sample : L4702-01
Misc : 7.06G/5.00ml/MSVOA_D/SOIL
ALS Vial : 6 Sample Multiplier: 1

Instrument :
MSVOA_D
ClientSampleId :
M-5(0-10)

Quant Method : Z:\VOASRV\HPCHEM1\MSVOA_D\METHOD\82D110320S.M
Quant Title : SW846 8260

TIC Library : C:\DATABASE\NIST11.L
TIC Integration Parameters: LSCINT.P

TIC Top Hit name	RT	EstConc	Units	Response	--Internal Standard--			
					#	RT	Resp	Conc
Tetradecane	16.56	9.6	ug/l	281178	4	13.58	1459000	50.0