

Data Path : Z:\voasrv\HPCHEM1\MSVOA\_D\Data\VD031722\  
 Data File : VD072257.D  
 Acq On : 17 Mar 2022 21:18  
 Operator : VA/SY  
 Sample : N1943-05  
 Misc : 9.31G/5.00ml/MSVOA\_D/SOIL  
 ALS Vial : 22 Sample Multiplier: 1

Instrument :  
 MSVOA\_D  
 ClientSampleId :  
 TB2

Integration Parameters: RTEINT.P

Integrator: RTE  
 Smoothing : ON Filtering: 5  
 Sampling : 1 Min Area: 3 % of largest Peak  
 Start Thrs: 0.2 Max Peaks: 100  
 Stop Thrs : 0 Peak Location: TOP

If leading or trailing edge < 100 prefer < Baseline drop else tangent >  
 Peak separation: 5

Method : Z:\voasrv\HPCHEM1\MSVOA\_D\Method\82D031122S.M  
 Title : SW846 8260

Signal : TIC: VD072257.D\data.ms

peak #	R.T. min	first scan	max scan	last scan	PK TY	peak height	corr. area	corr. % max.	% of total
1	4.967	507	518	529	rVB2	10098	32931	1.44%	0.256%
2	7.909	1008	1018	1023	rBV	290942	689776	30.17%	5.352%
3	7.973	1023	1029	1041	rVB	542104	1223190	53.51%	9.491%
4	8.326	1080	1089	1103	rBV	254935	571009	24.98%	4.430%
5	8.861	1171	1180	1191	rBV	802136	1587630	69.45%	12.318%
6	10.338	1423	1431	1444	rBV	1200561	2216524	96.96%	17.198%
7	11.638	1641	1652	1665	rBV	1245436	2156646	94.34%	16.733%
8	12.626	1812	1820	1830	rBV	1337032	2285936	100.00%	17.736%
9	13.561	1972	1979	1991	rBV	1260785	2094325	91.62%	16.250%
10	14.085	2063	2068	2073	rVB3	20278	30541	1.34%	0.237%

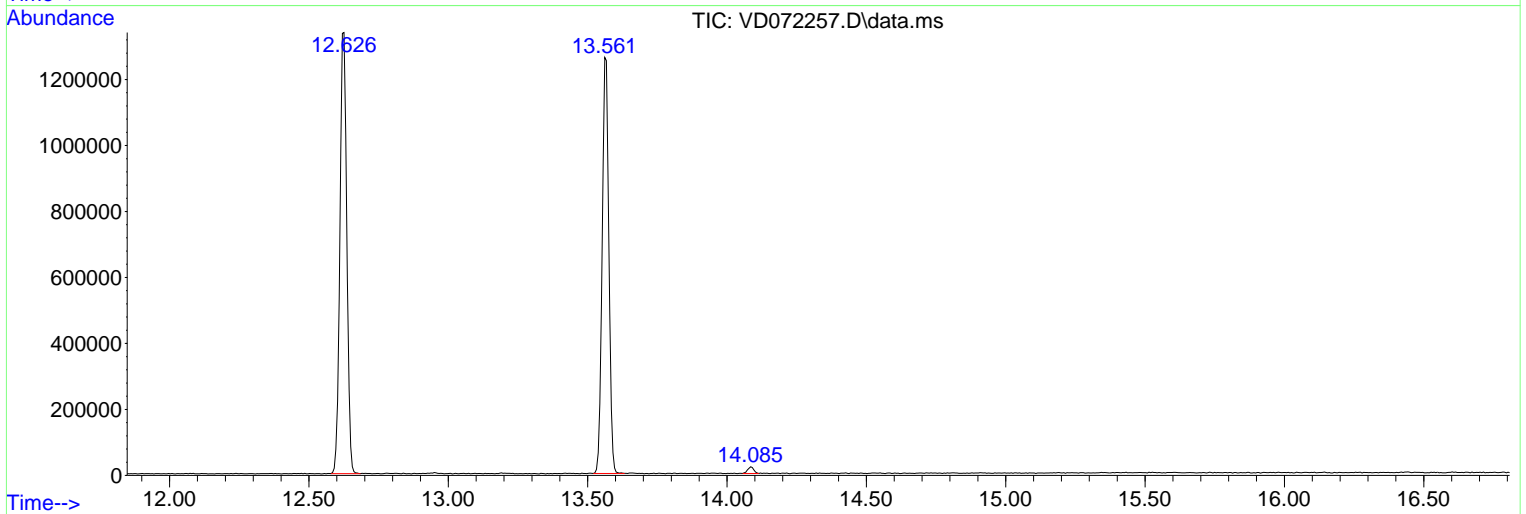
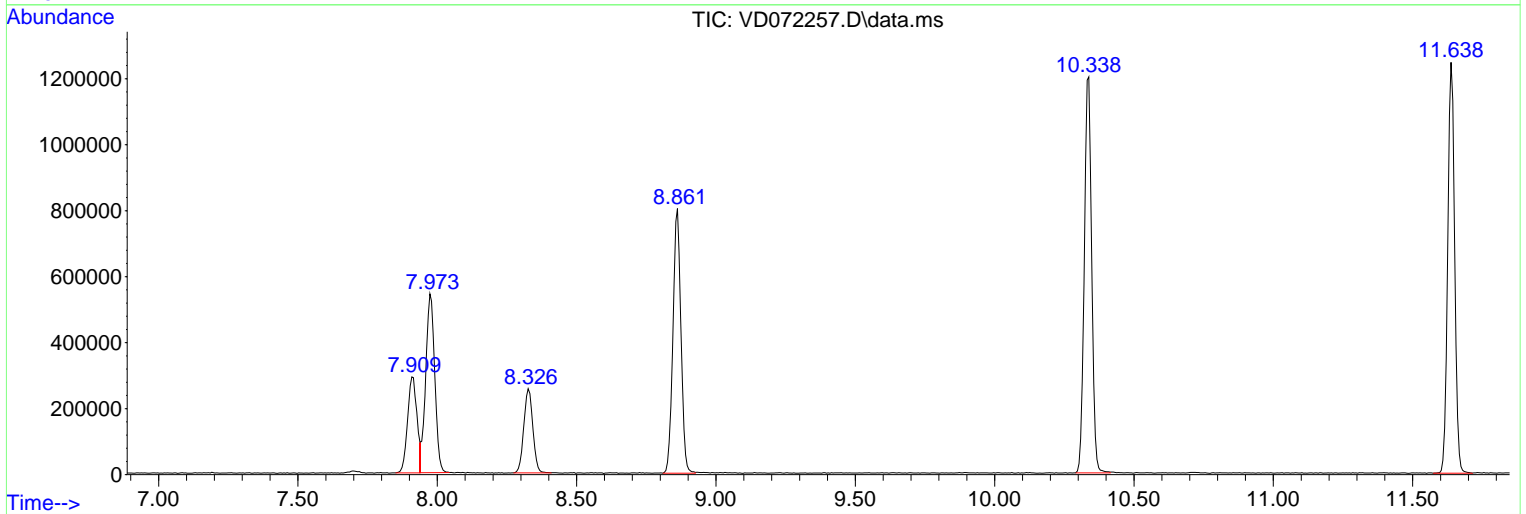
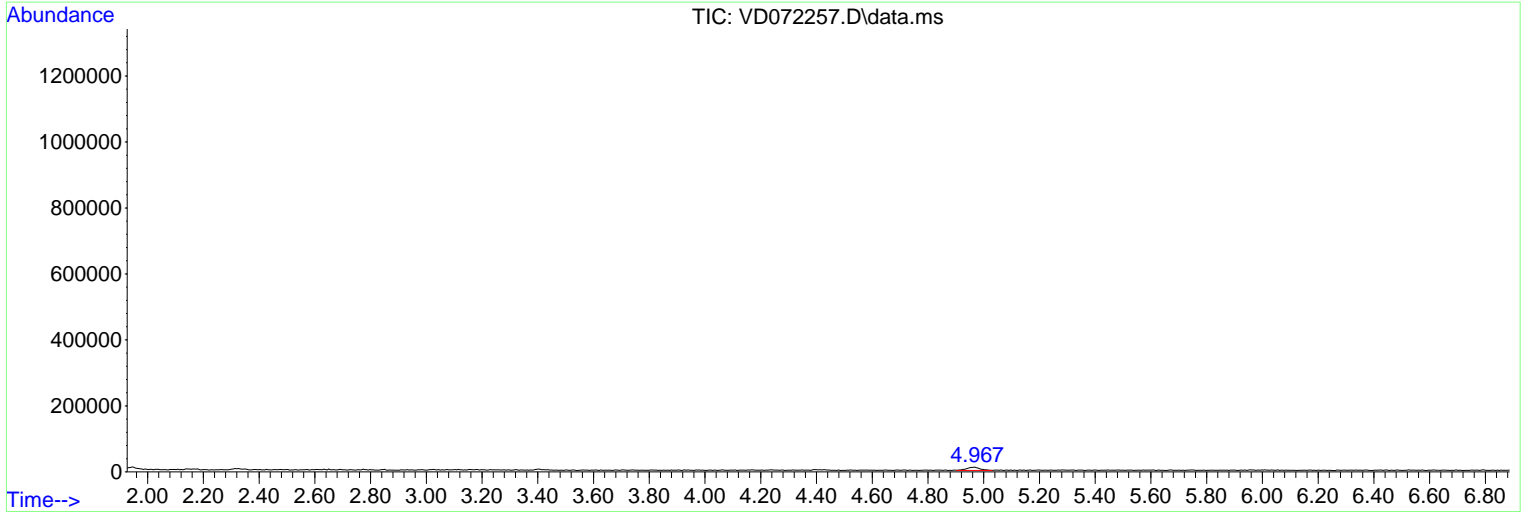
Sum of corrected areas: 12888508

Data Path : Z:\voasrv\HPCHEM1\MSVOA\_D\Data\VD031722\  
 Data File : VD072257.D  
 Acq On : 17 Mar 2022 21:18  
 Operator : VA/SY  
 Sample : N1943-05  
 Misc : 9.31G/5.00ml/MSVOA\_D/SOIL  
 ALS Vial : 22 Sample Multiplier: 1

Instrument :  
 MSVOA\_D  
 ClientSampleId :  
 TB2

Quant Method : Z:\voasrv\HPCHEM1\MSVOA\_D\Method\82D031122S.M  
 Quant Title : SW846 8260

TIC Library : C:\Database\NIST20.L  
 TIC Integration Parameters: LSCINT.P



Library Search Compound Report

Data Path : Z:\voasrv\HPCHEM1\MSVOA\_D\Data\VD031722\  
Data File : VD072257.D  
Acq On : 17 Mar 2022 21:18  
Operator : VA/SY  
Sample : N1943-05  
Misc : 9.31G/5.00ml/MSVOA\_D/SOIL  
ALS Vial : 22 Sample Multiplier: 1

Instrument :  
MSVOA\_D  
ClientSampleId :  
TB2

Quant Method : Z:\voasrv\HPCHEM1\MSVOA\_D\Method\82D031122S.M  
Quant Title : SW846 8260

TIC Library : C:\Database\NIST20.L  
TIC Integration Parameters: LSCINT.P

No Library Search Compounds Detected

\*\*\*\*\*

Data Path : Z:\voasrv\HPCHEM1\MSVOA\_D\Data\VD031722\  
Data File : VD072257.D  
Acq On : 17 Mar 2022 21:18  
Operator : VA/SY  
Sample : N1943-05  
Misc : 9.31G/5.00ml/MSVOA\_D/SOIL  
ALS Vial : 22 Sample Multiplier: 1

Instrument :  
MSVOA\_D  
ClientSampleId :  
TB2

Quant Method : Z:\voasrv\HPCHEM1\MSVOA\_D\Method\82D031122S.M  
Quant Title : SW846 8260

TIC Library : C:\Database\NIST20.L  
TIC Integration Parameters: LSCINT.P

TIC Top Hit name	RT	EstConc	Units	Response	--Internal Standard--			
					#	RT	Resp	Conc

---