

Data Path : Z:\voasrv\HPCHEM1\MSVOA_D\Data\VD051922\
 Data File : VD073183.D
 Acq On : 20 May 2022 13:55
 Operator : VA/SY
 Sample : N2842-25
 Misc : 6.20G/5.00ml/MSVOA_D/SOIL
 ALS Vial : 56 Sample Multiplier: 1

Instrument :
 MSVOA_D
 ClientSampleId :
 P025-SS001-1824-01

Integration Parameters: RTEINT.P

Integrator: RTE
 Smoothing : ON Filtering: 5
 Sampling : 1 Min Area: 3 % of largest Peak
 Start Thrs: 0.2 Max Peaks: 100
 Stop Thrs : 0 Peak Location: TOP

If leading or trailing edge < 100 prefer < Baseline drop else tangent >
 Peak separation: 5

Method : Z:\voasrv\HPCHEM1\MSVOA_D\Method\82D051922S.M
 Title : SW846 8260

Signal : TIC: VD073183.D\data.ms

peak #	R.T. min	first scan	max scan	last scan	PK TY	peak height	corr. area	corr. % max.	% of total
1	4.162	374	381	387	rBV3	6778	18490	1.08%	0.187%
2	4.962	508	517	525	rBV4	13779	41603	2.43%	0.420%
3	7.191	887	896	905	rBV2	25927	73416	4.29%	0.742%
4	7.908	1006	1018	1023	rBV2	240890	574820	33.61%	5.808%
5	7.973	1023	1029	1040	rVB	409415	899918	52.62%	9.093%
6	8.326	1076	1089	1099	rVB2	213030	527066	30.82%	5.326%
7	8.861	1169	1180	1190	rBV	594040	1217966	71.22%	12.307%
8	10.332	1422	1430	1440	rBV	948258	1710180	100.00%	17.281%
9	10.714	1488	1495	1502	rBV3	28708	50886	2.98%	0.514%
10	11.079	1551	1557	1562	rBV2	31625	52904	3.09%	0.535%
11	11.449	1613	1620	1628	rVB4	11749	18489	1.08%	0.187%
12	11.638	1644	1652	1661	rBV	911709	1591734	93.07%	16.084%
13	12.620	1810	1819	1827	rBV	758079	1307681	76.46%	13.214%
14	12.761	1837	1843	1853	rVB5	18952	46995	2.75%	0.475%
15	12.967	1868	1878	1885	rBV7	15548	40825	2.39%	0.413%
16	13.196	1906	1917	1926	rVB2	28301	64942	3.80%	0.656%
17	13.302	1930	1935	1941	rVB3	11135	19214	1.12%	0.194%
18	13.414	1944	1954	1961	rBV2	37473	69269	4.05%	0.700%
19	13.561	1969	1979	1985	rBV	900626	1486843	86.94%	15.024%
20	13.608	1985	1987	1998	rVB4	33618	62461	3.65%	0.631%
21	13.773	2008	2015	2020	rBV4	10193	20634	1.21%	0.209%

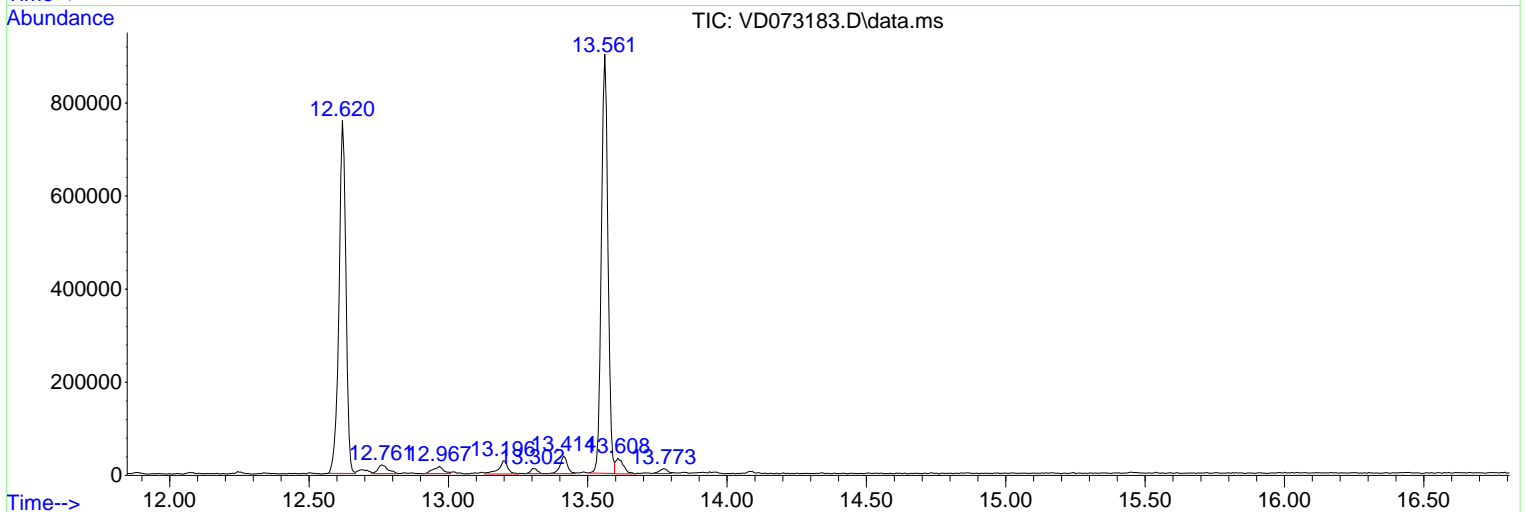
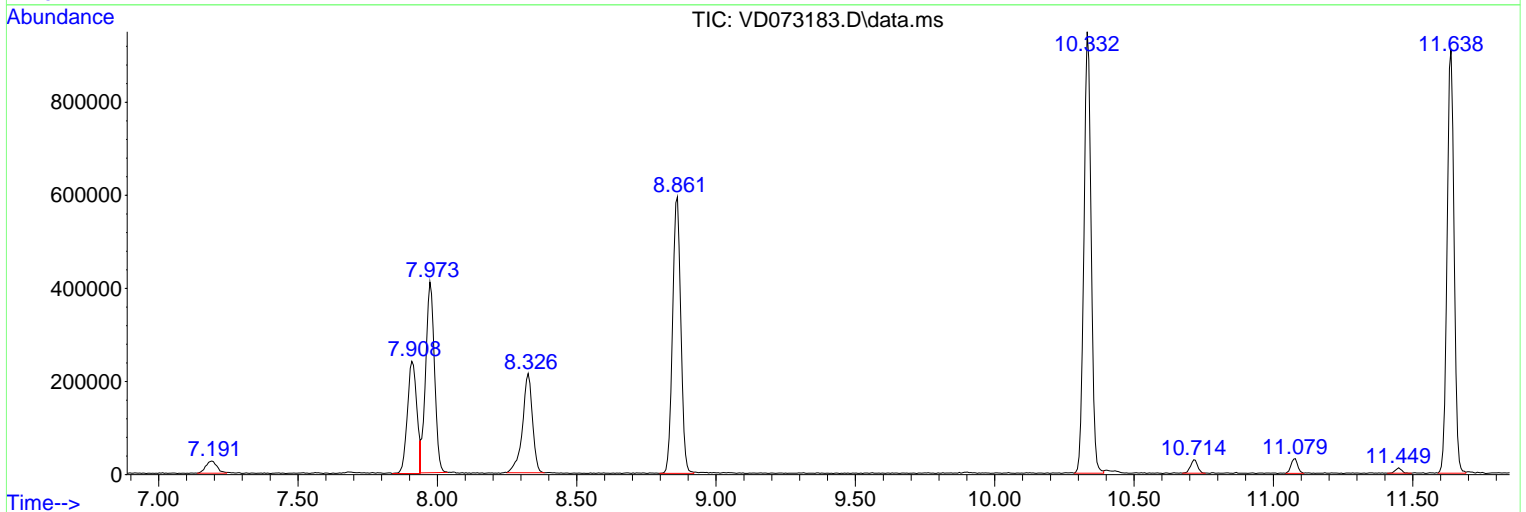
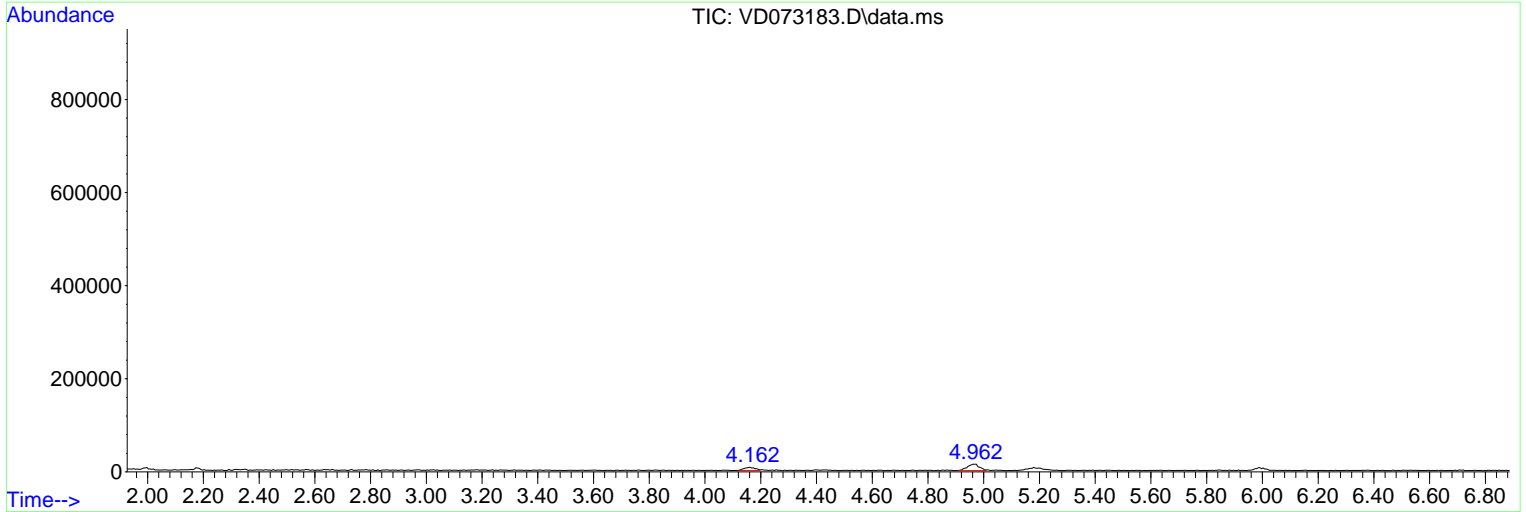
Sum of corrected areas: 9896336

Data Path : Z:\voasrv\HPCHEM1\MSVOA_D\Data\VD051922\
 Data File : VD073183.D
 Acq On : 20 May 2022 13:55
 Operator : VA/SY
 Sample : N2842-25
 Misc : 6.20G/5.00ml/MSVOA_D/SOIL
 ALS Vial : 56 Sample Multiplier: 1

Instrument :
 MSVOA_D
 ClientSampleId :
 P025-SS001-1824-01

Quant Method : Z:\voasrv\HPCHEM1\MSVOA_D\Method\82D051922S.M
 Quant Title : SW846 8260

TIC Library : C:\Database\NIST20.L
 TIC Integration Parameters: LSCINT.P



Library Search Compound Report

Data Path : Z:\voasrv\HPCHEM1\MSVOA_D\Data\VD051922\
Data File : VD073183.D
Acq On : 20 May 2022 13:55
Operator : VA/SY
Sample : N2842-25
Misc : 6.20G/5.00ml/MSVOA_D/SOIL
ALS Vial : 56 Sample Multiplier: 1

Instrument :
MSVOA_D
ClientSampleId :
P025-SS001-1824-01

Quant Method : Z:\voasrv\HPCHEM1\MSVOA_D\Method\82D051922S.M
Quant Title : SW846 8260

TIC Library : C:\Database\NIST20.L
TIC Integration Parameters: LSCINT.P

No Library Search Compounds Detected

Data Path : Z:\voasrv\HPCHEM1\MSVOA_D\Data\VD051922\
Data File : VD073183.D
Acq On : 20 May 2022 13:55
Operator : VA/SY
Sample : N2842-25
Misc : 6.20G/5.00ml/MSVOA_D/SOIL
ALS Vial : 56 Sample Multiplier: 1

Instrument :
MSVOA_D
ClientSampleId :
P025-SS001-1824-01

Quant Method : Z:\voasrv\HPCHEM1\MSVOA_D\Method\82D051922S.M
Quant Title : SW846 8260

TIC Library : C:\Database\NIST20.L
TIC Integration Parameters: LSCINT.P

TIC Top Hit name	RT	EstConc	Units	Response	--Internal Standard--			
					#	RT	Resp	Conc
