

Data Path : Z:\voasrv\HPCHEM1\MSVOA_D\Data\VD111122\
 Data File : VD074910.D
 Acq On : 12 Nov 2022 02:18
 Operator : VA/SY
 Sample : N5607-01
 Misc : 5.09G/5.00ml/MSVOA_D/SOIL
 ALS Vial : 37 Sample Multiplier: 1

Instrument :
 MSVOA_D
 ClientSampleId :
 SB-01

Quant Time: Nov 14 00:59:15 2022
 Quant Method : Z:\voasrv\HPCHEM1\MSVOA_D\Method\82D111122S.M
 Quant Title : SW846 8260
 QLast Update : Mon Nov 14 00:51:58 2022
 Response via : Initial Calibration

Compound	R.T.	QIon	Response	Conc	Units	Dev(Min)

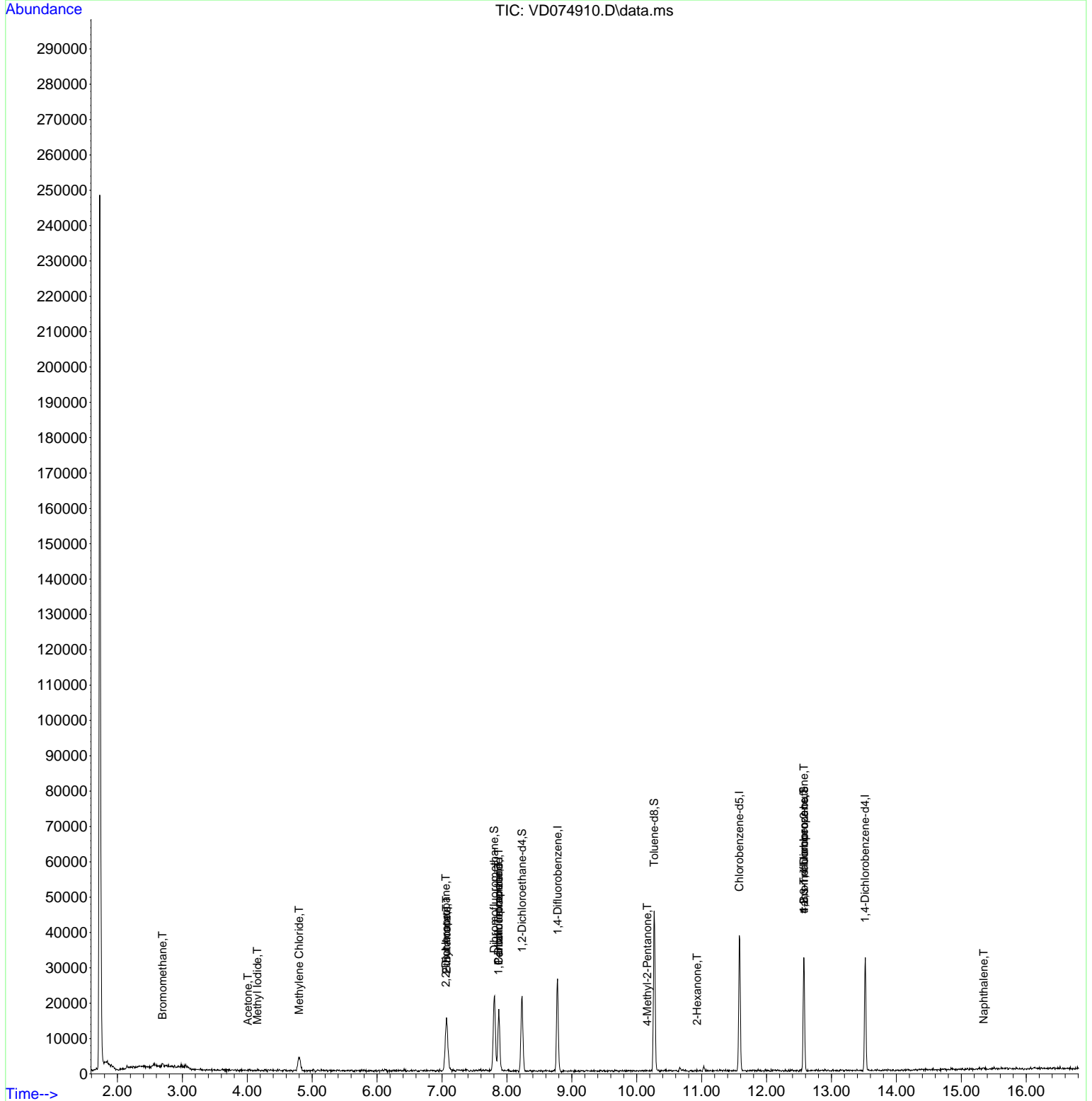
Internal Standards						
1) Pentafluorobenzene	7.875	168	14623	50.000	ug/l	0.00
34) 1,4-Difluorobenzene	8.781	114	24796	50.000	ug/l	0.00
63) Chlorobenzene-d5	11.581	117	24943	50.000	ug/l	0.00
72) 1,4-Dichlorobenzene-d4	13.516	152	9601	50.000	ug/l	0.00
System Monitoring Compounds						
33) 1,2-Dichloroethane-d4	8.234	65	16114	181.414	ug/l	0.00
Spiked Amount	50.000	Range 50 - 163	Recovery	=	362.820%#	
35) Dibromofluoromethane	7.804	113	16221	106.124	ug/l	0.00
Spiked Amount	50.000	Range 54 - 147	Recovery	=	212.240%#	
50) Toluene-d8	10.269	98	34015	67.558	ug/l	0.00
Spiked Amount	50.000	Range 49 - 140	Recovery	=	135.120%	
62) 4-Bromofluorobenzene	12.575	95	10067	65.114	ug/l	0.00
Spiked Amount	50.000	Range 25 - 144	Recovery	=	130.220%	
Target Compounds						
						Qvalue
3) Chloromethane	2.146	50	294	Below Cal	#	37
5) Bromomethane	2.693	94	666	3.405	ug/l	81
10) Methyl Iodide	4.158	142	61	5.080	ug/l #	43
11) Tert butyl alcohol	5.022	59	71	Below Cal	#	84
16) Acetone	4.010	43	59	2.444	ug/l #	37
18) Methyl Acetate	4.563	43	57	Below Cal	#	44
20) Methylene Chloride	4.799	84	3360	4.272	ug/l	95
25) 2-Butanone	7.069	43	696	22.048	ug/l #	42
26) 2,2-Dichloropropane	7.057	77	542	2.231	ug/l #	50
36) 1,1-Dichloropropene	7.869	75	988	4.398	ug/l #	39
37) Ethyl Acetate	7.069	43	696	9.233	ug/l #	1
38) Carbon Tetrachloride	7.875	117	1324	6.261	ug/l #	14
51) 4-Methyl-2-Pentanone	10.163	43	78	1.232	ug/l #	29
59) 2-Hexanone	10.928	43	64	1.451	ug/l #	18
76) 1,2,3-Trichloropropane	12.575	75	4942	61.542	ug/l #	1
81) trans-1,4-Dichloro-2-b...	12.575	75	4942	151.395	ug/l #	17
95) Naphthalene	15.345	128	425	1.375	ug/l #	69

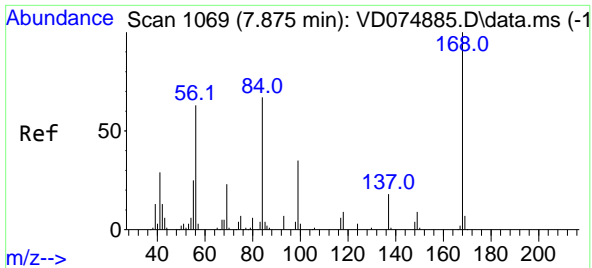
(#) = qualifier out of range (m) = manual integration (+) = signals summed

Data Path : Z:\voasrv\HPCHEM1\MSVOA_D\Data\VD111122\
 Data File : VD074910.D
 Acq On : 12 Nov 2022 02:18
 Operator : VA/SY
 Sample : N5607-01
 Misc : 5.09G/5.00ml/MSVOA_D/SOIL
 ALS Vial : 37 Sample Multiplier: 1

Instrument :
 MSVOA_D
 ClientSampleId :
 SB-01

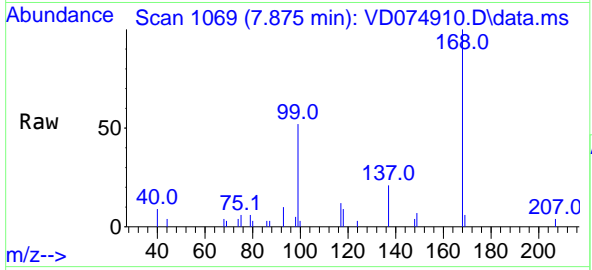
Quant Time: Nov 14 00:59:15 2022
 Quant Method : Z:\voasrv\HPCHEM1\MSVOA_D\Method\82D111122S.M
 Quant Title : SW846 8260
 QLast Update : Mon Nov 14 00:51:58 2022
 Response via : Initial Calibration



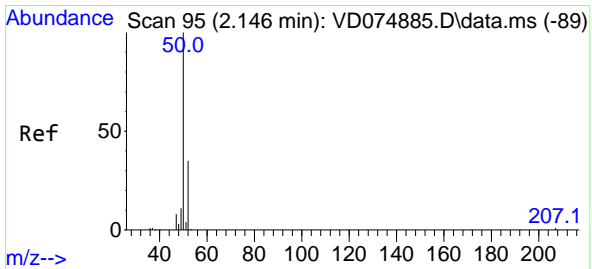
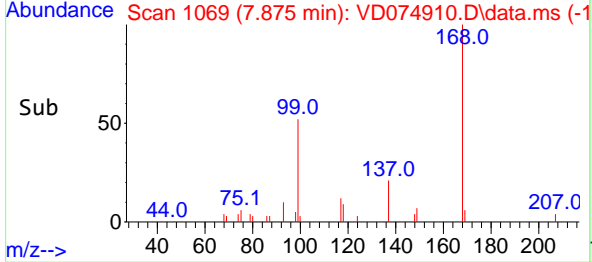
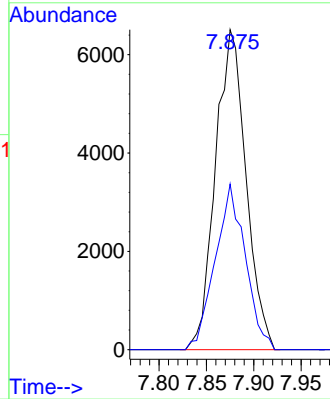


#1
 Pentafluorobenzene
 Concen: 50.000 ug/l
 RT: 7.875 min Scan# 10
 Delta R.T. -0.000 min
 Lab File: VD074910.D
 Acq: 12 Nov 2022 02:18

Instrument : MSVOA_D
 ClientSampleId : SB-01

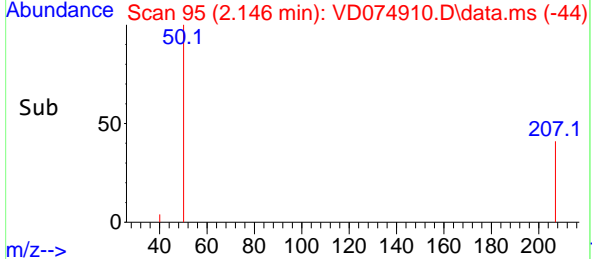
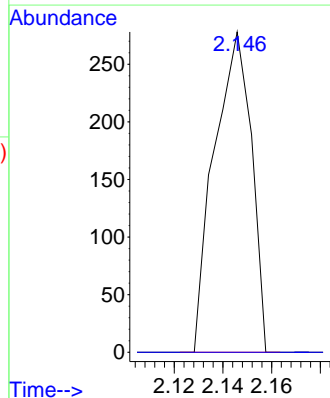
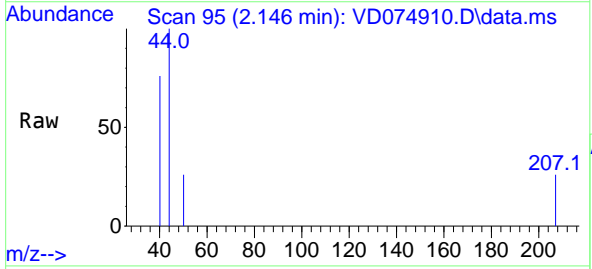


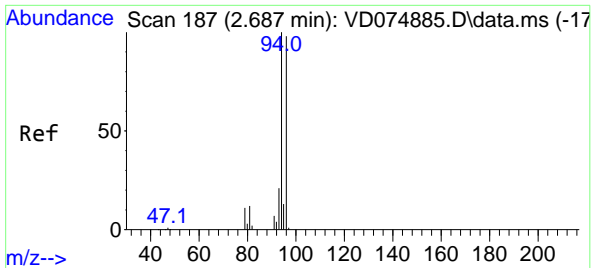
Tgt Ion:168 Resp: 14623
 Ion Ratio Lower Upper
 168 100
 99 51.8 40.9 61.3



#3
 Chloromethane
 Concen: Below Cal
 RT: 2.146 min Scan# 95
 Delta R.T. -0.000 min
 Lab File: VD074910.D
 Acq: 12 Nov 2022 02:18

Tgt Ion: 50 Resp: 294
 Ion Ratio Lower Upper
 50 100
 52 0.0 30.0 45.0#

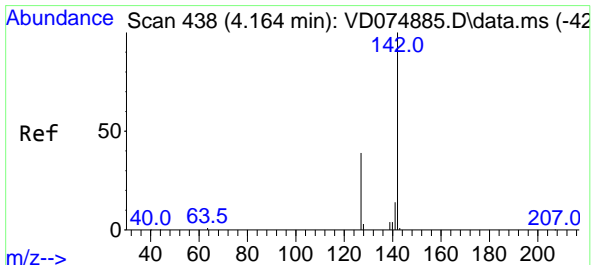
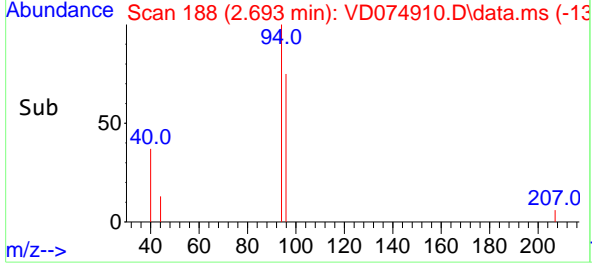
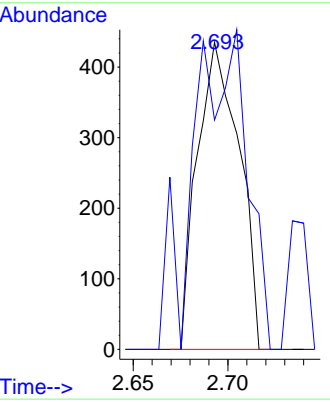
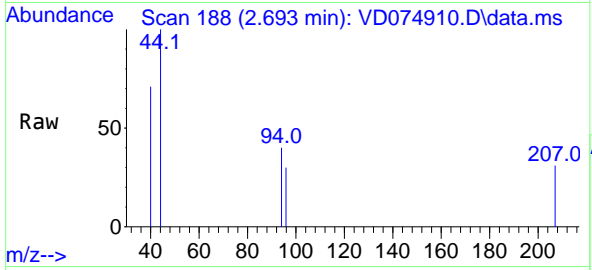




#5
 Bromomethane
 Concen: 3.405 ug/l
 RT: 2.693 min Scan# 11
 Delta R.T. 0.006 min
 Lab File: VD074910.D
 Acq: 12 Nov 2022 02:18

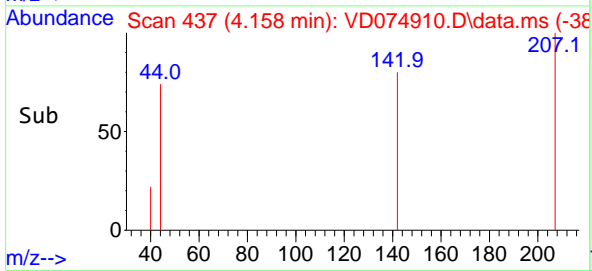
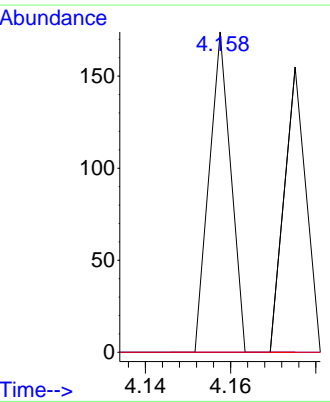
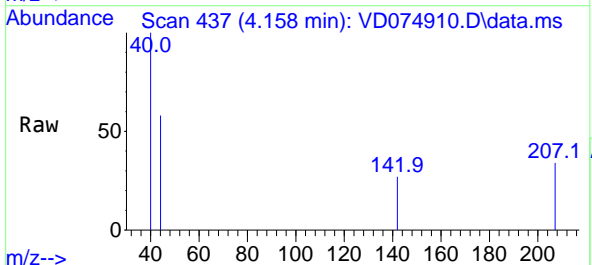
Instrument : MSVOA_D
 ClientSampleId : SB-01

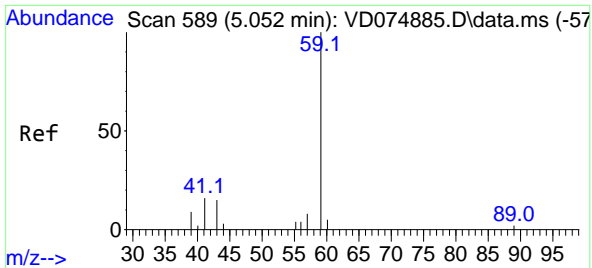
Tgt Ion: 94 Resp: 666
 Ion Ratio Lower Upper
 94 100
 96 74.7 74.6 112.0



#10
 Methyl Iodide
 Concen: 5.080 ug/l
 RT: 4.158 min Scan# 437
 Delta R.T. -0.006 min
 Lab File: VD074910.D
 Acq: 12 Nov 2022 02:18

Tgt Ion:142 Resp: 61
 Ion Ratio Lower Upper
 142 100
 127 0.0 31.9 47.9#
 141 0.0 11.4 17.2#

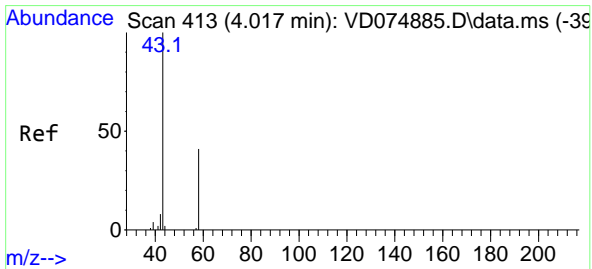
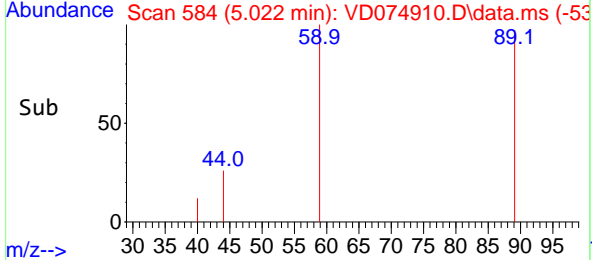
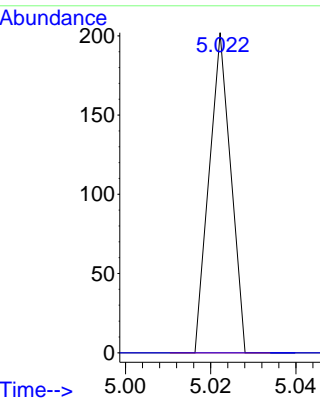
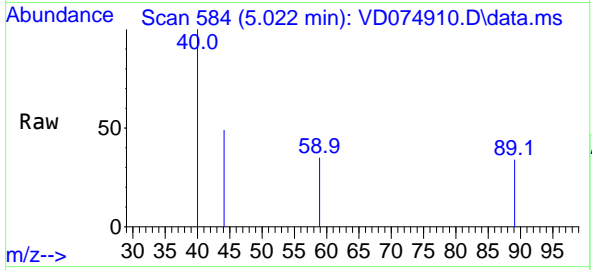




#11
 Tert butyl alcohol
 Concen: Below Cal
 RT: 5.022 min Scan# 51
 Delta R.T. -0.030 min
 Lab File: VD074910.D
 Acq: 12 Nov 2022 02:18

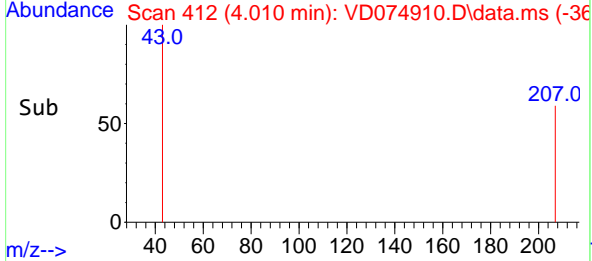
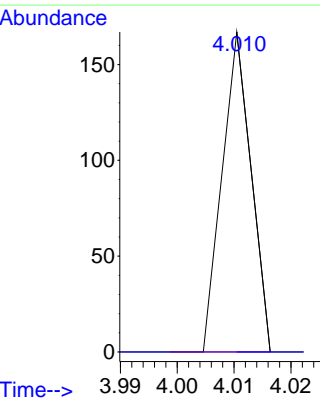
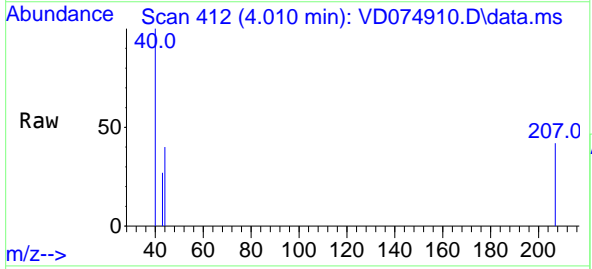
Instrument : MSVOA_D
 ClientSampleId : SB-01

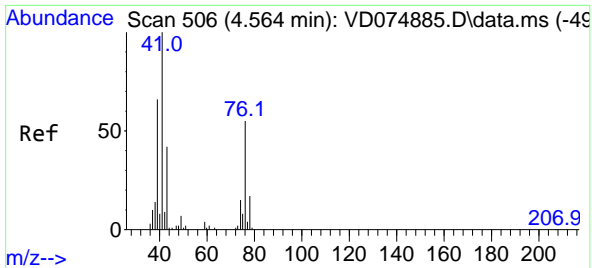
Tgt Ion: 59 Resp: 71
 Ion Ratio Lower Upper
 59 100
 57 0.0 4.4 6.6#



#16
 Acetone
 Concen: 2.444 ug/l
 RT: 4.010 min Scan# 412
 Delta R.T. -0.007 min
 Lab File: VD074910.D
 Acq: 12 Nov 2022 02:18

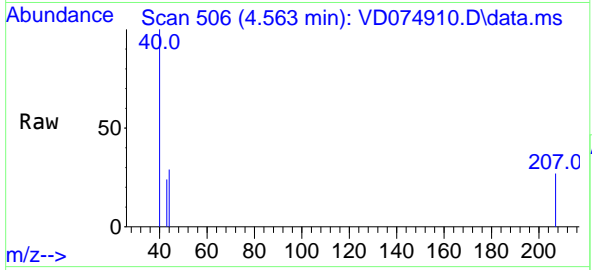
Tgt Ion: 43 Resp: 59
 Ion Ratio Lower Upper
 43 100
 58 0.0 30.2 45.2#



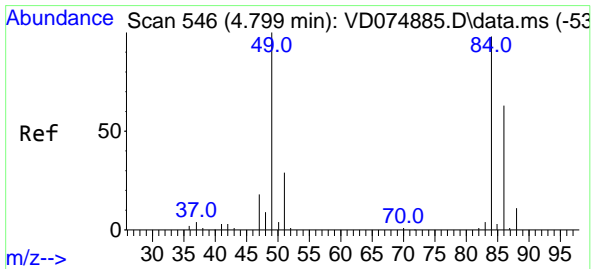
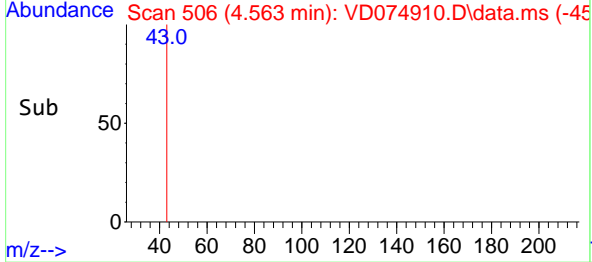
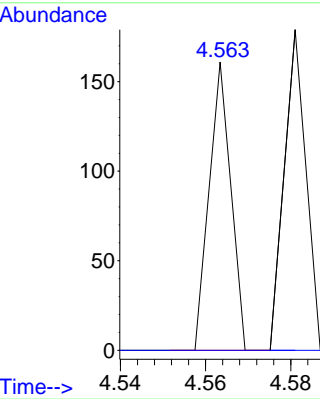


#18
Methyl Acetate
Concen: Below Cal
RT: 4.563 min Scan# 506
Delta R.T. -0.001 min
Lab File: VD074910.D
Acq: 12 Nov 2022 02:18

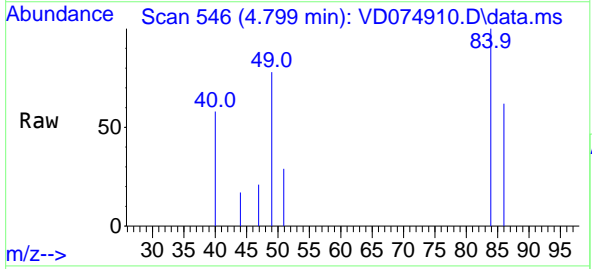
Instrument : MSVOA_D
Client SampleId : SB-01



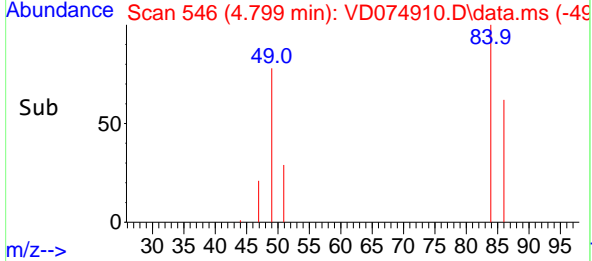
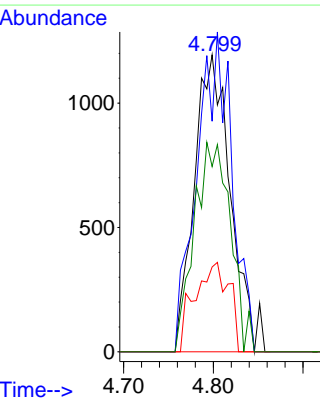
Tgt Ion: 43 Resp: 57
Ion Ratio Lower Upper
43 100
74 0.0 24.7 37.1#

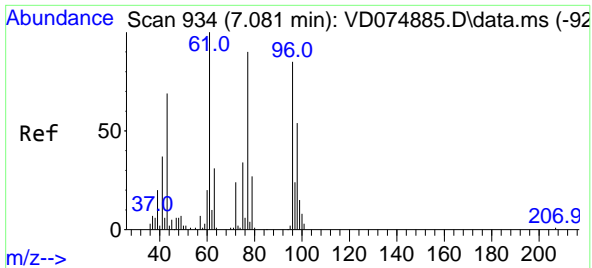


#20
Methylene Chloride
Concen: 4.272 ug/l
RT: 4.799 min Scan# 546
Delta R.T. -0.000 min
Lab File: VD074910.D
Acq: 12 Nov 2022 02:18



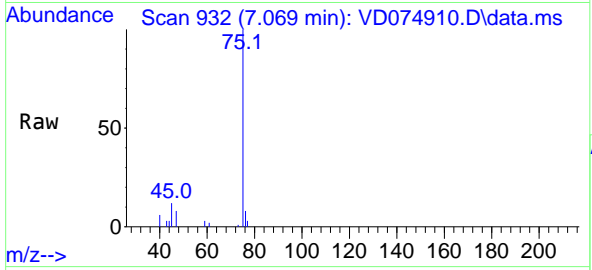
Tgt Ion: 84 Resp: 3360
Ion Ratio Lower Upper
84 100
49 77.6 68.0 102.0
51 28.6 23.2 34.8
86 62.4 48.0 72.0



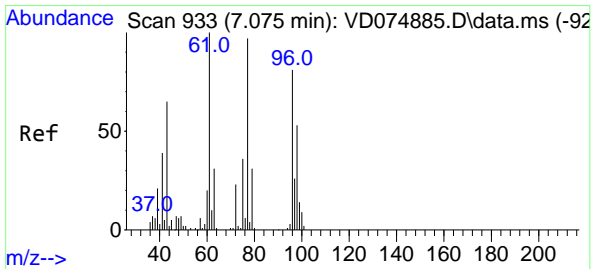
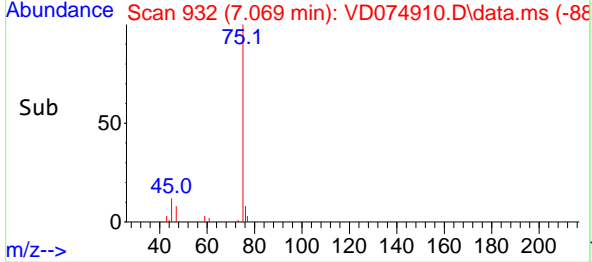
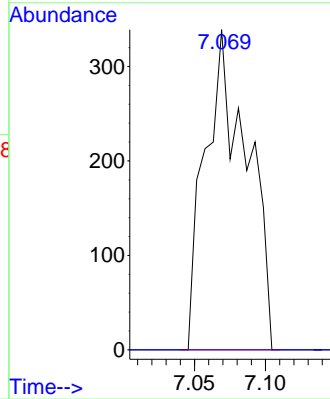


#25
 2-Butanone
 Concen: 22.048 ug/l
 RT: 7.069 min Scan# 911
 Delta R.T. -0.012 min
 Lab File: VD074910.D
 Acq: 12 Nov 2022 02:18

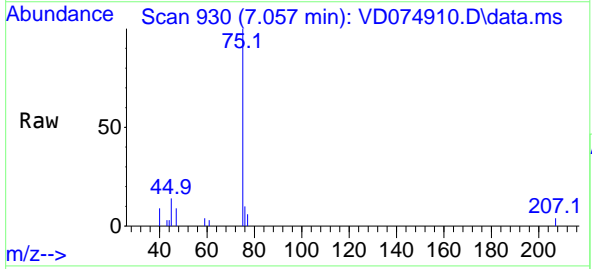
Instrument : MSVOA_D
 ClientSampleId : SB-01



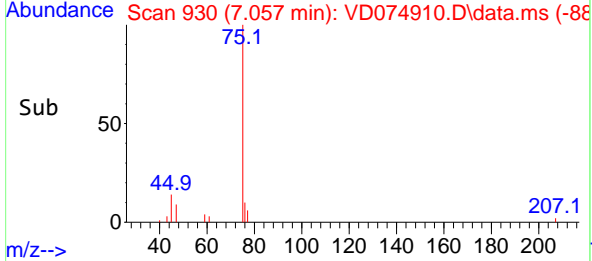
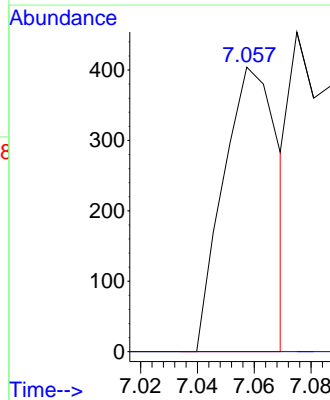
Tgt Ion: 43 Resp: 696
 Ion Ratio Lower Upper
 43 100
 72 0.0 25.8 38.8#

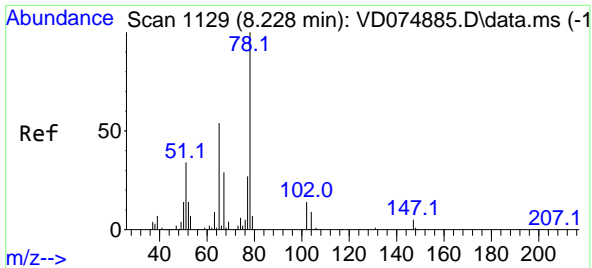


#26
 2,2-Dichloropropane
 Concen: 2.231 ug/l
 RT: 7.057 min Scan# 930
 Delta R.T. -0.018 min
 Lab File: VD074910.D
 Acq: 12 Nov 2022 02:18



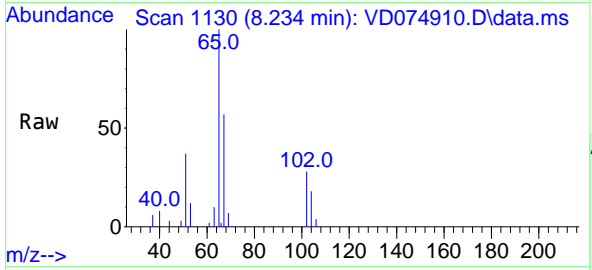
Tgt Ion: 77 Resp: 542
 Ion Ratio Lower Upper
 77 100
 97 0.0 12.5 37.5#



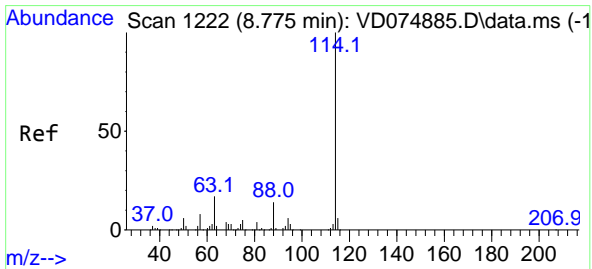
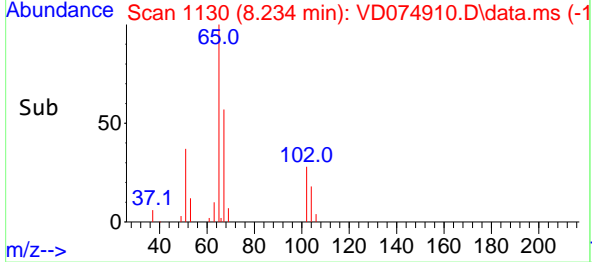
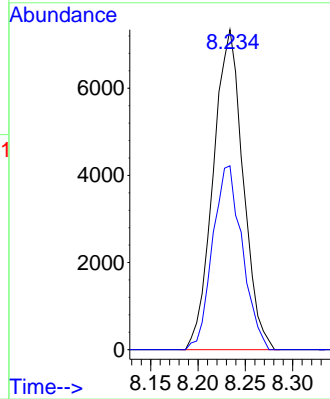


#33
 1,2-Dichloroethane-d4
 Concen: 181.414 ug/l
 RT: 8.234 min Scan# 1129
 Delta R.T. 0.006 min
 Lab File: VD074910.D
 Acq: 12 Nov 2022 02:18

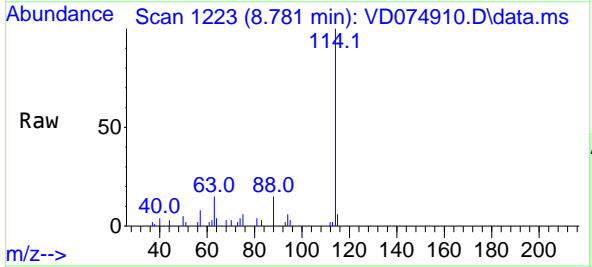
Instrument : MSVOA_D
 ClientSampleId : SB-01



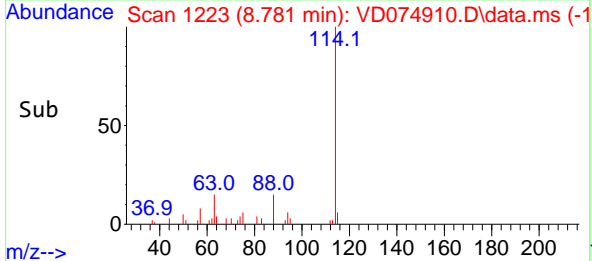
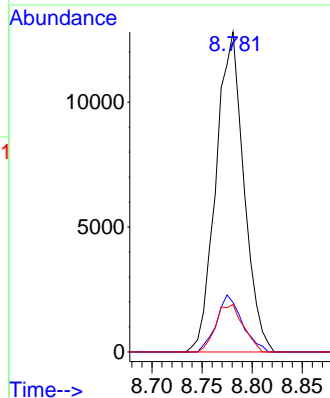
Tgt Ion: 65 Resp: 16114
 Ion Ratio Lower Upper
 65 100
 67 57.1 0.0 110.2

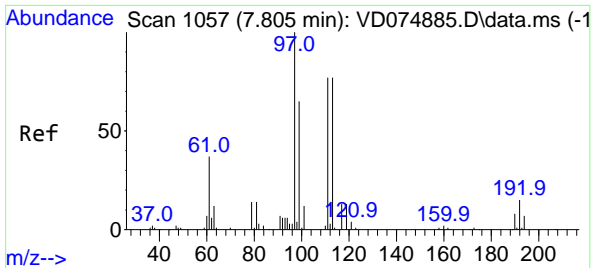


#34
 1,4-Difluorobenzene
 Concen: 50.000 ug/l
 RT: 8.781 min Scan# 1223
 Delta R.T. 0.006 min
 Lab File: VD074910.D
 Acq: 12 Nov 2022 02:18



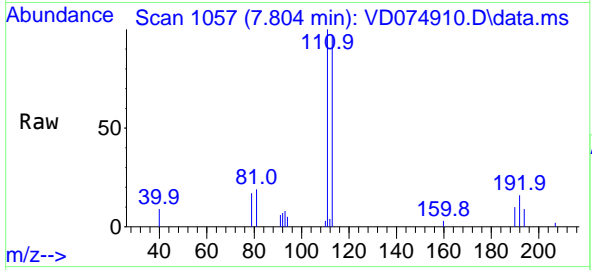
Tgt Ion: 114 Resp: 24796
 Ion Ratio Lower Upper
 114 100
 63 15.4 0.0 33.2
 88 14.9 0.0 28.2





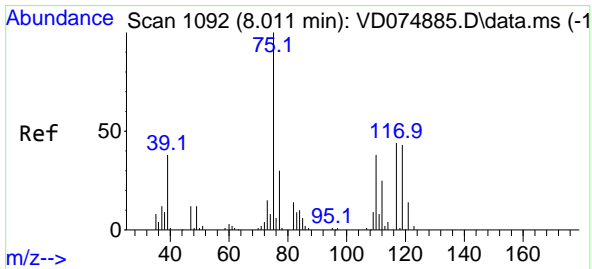
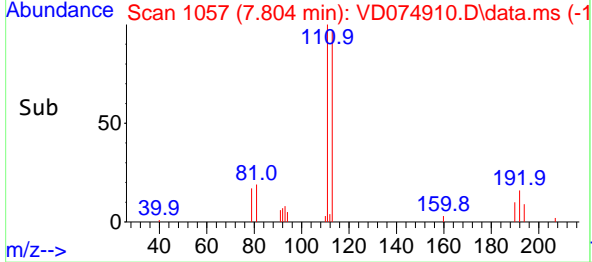
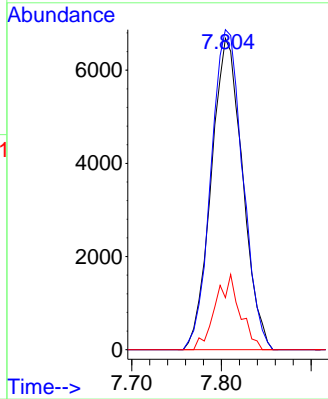
#35
 Dibromofluoromethane
 Concen: 106.124 ug/l
 RT: 7.804 min Scan# 1068
 Delta R.T. -0.001 min
 Lab File: VD074910.D
 Acq: 12 Nov 2022 02:18

Instrument : MSVOA_D
 ClientSampleId : SB-01



Tgt Ion: 113 Resp: 16221

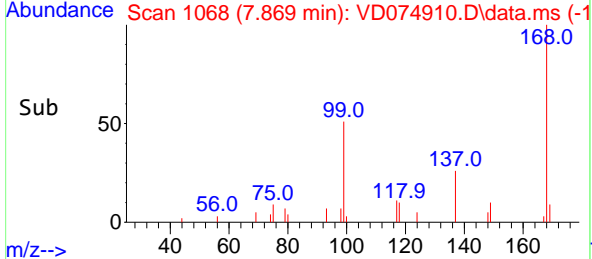
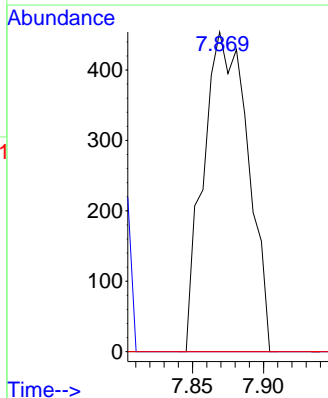
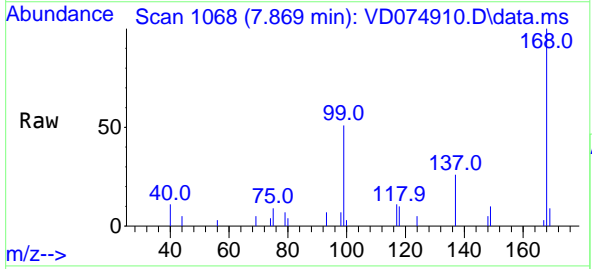
Ion	Ratio	Lower	Upper
113	100		
111	103.7	82.3	123.5
192	19.0	16.4	24.6

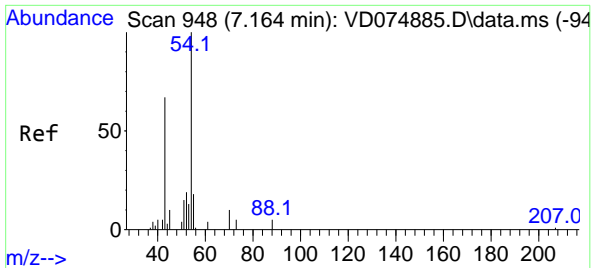


#36
 1,1-Dichloropropene
 Concen: 4.398 ug/l
 RT: 7.869 min Scan# 1068
 Delta R.T. -0.142 min
 Lab File: VD074910.D
 Acq: 12 Nov 2022 02:18

Tgt Ion: 75 Resp: 988

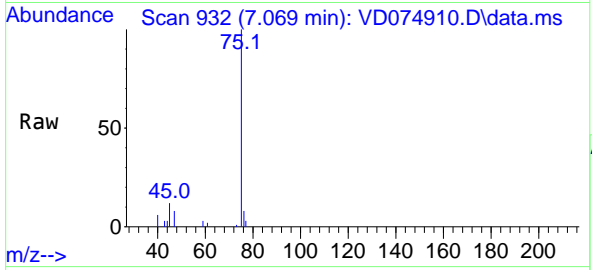
Ion	Ratio	Lower	Upper
75	100		
110	0.0	19.7	59.0#
77	0.0	25.4	38.2#





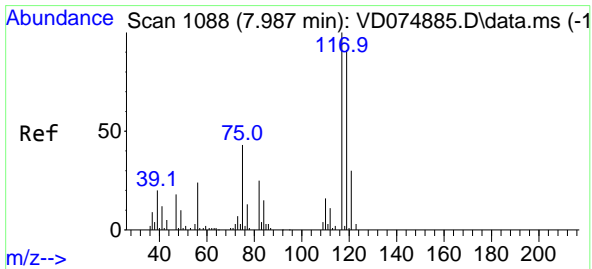
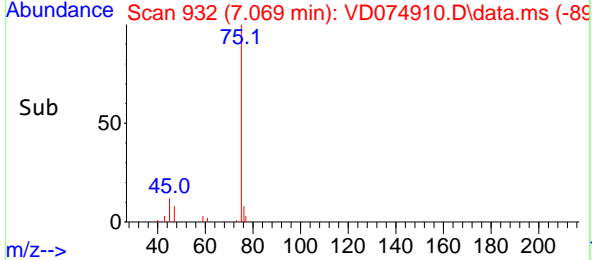
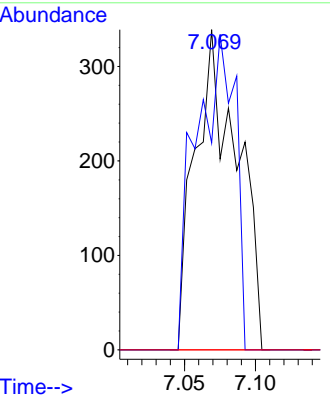
#37
 Ethyl Acetate
 Concen: 9.233 ug/l
 RT: 7.069 min Scan# 911
 Delta R.T. -0.095 min
 Lab File: VD074910.D
 Acq: 12 Nov 2022 02:18

Instrument : MSVOA_D
 ClientSampleId : SB-01



Tgt Ion: 43 Resp: 696

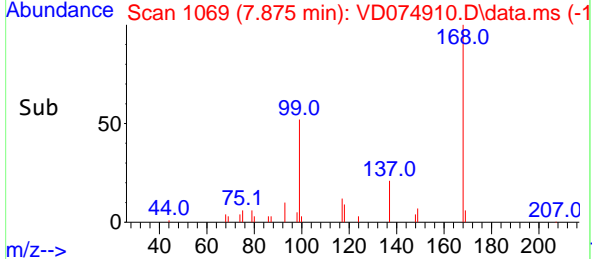
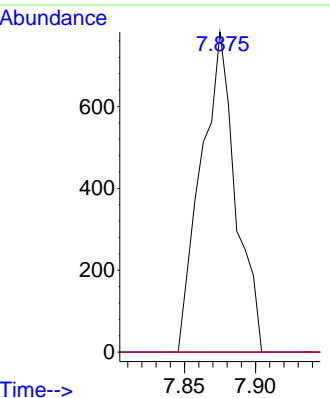
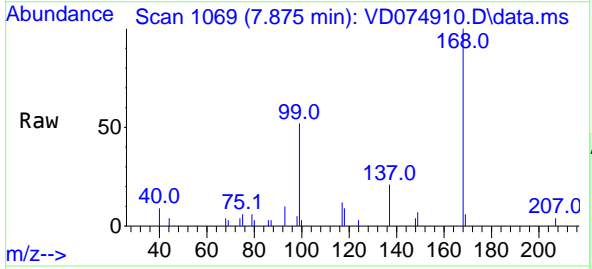
Ion	Ratio	Lower	Upper
43	100		
61	91.8	12.2	18.4#
70	0.0	9.6	14.4#

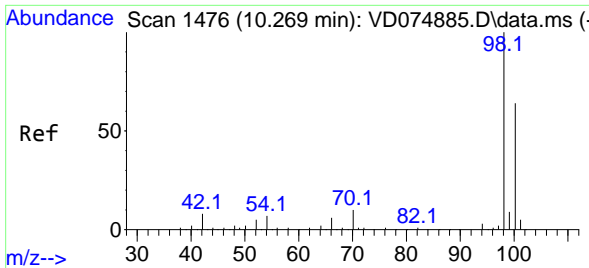


#38
 Carbon Tetrachloride
 Concen: 6.261 ug/l
 RT: 7.875 min Scan# 1069
 Delta R.T. -0.112 min
 Lab File: VD074910.D
 Acq: 12 Nov 2022 02:18

Tgt Ion: 117 Resp: 1324

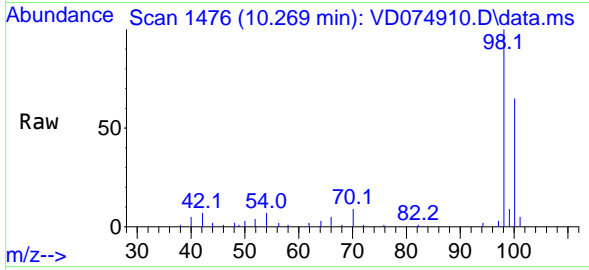
Ion	Ratio	Lower	Upper
117	100		
119	0.0	73.1	109.7#
121	0.0	25.0	37.6#



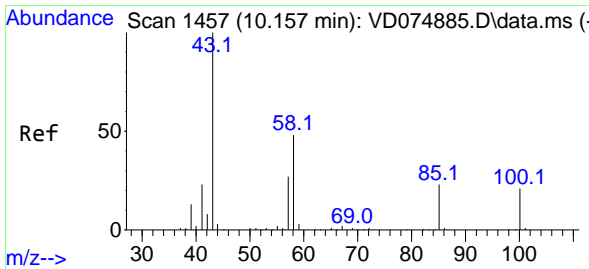
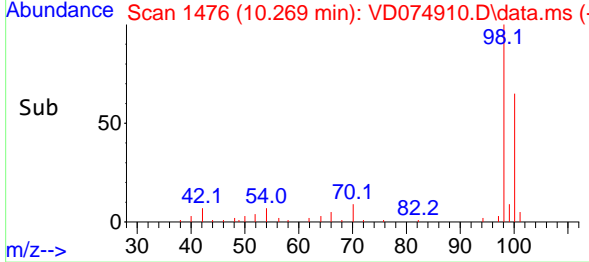
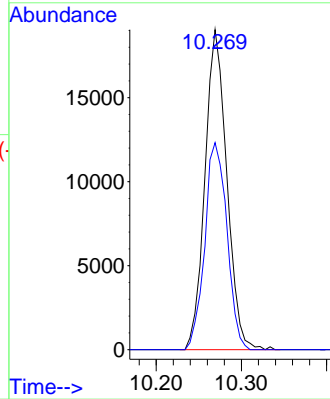


#50
 Toluene-d8
 Concen: 67.558 ug/l
 RT: 10.269 min Scan# 1476
 Delta R.T. -0.000 min
 Lab File: VD074910.D
 Acq: 12 Nov 2022 02:18

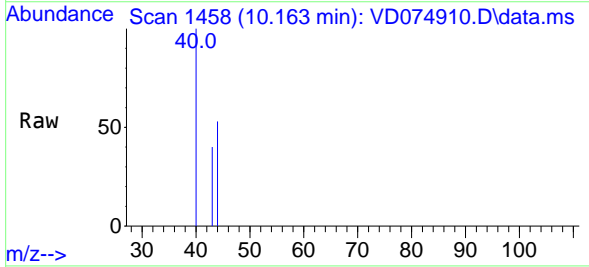
Instrument : MSVOA_D
 ClientSampleId : SB-01



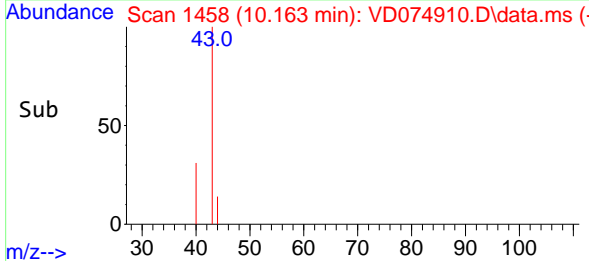
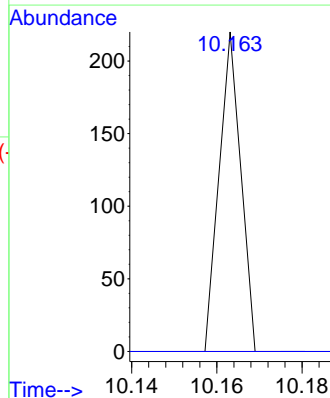
Tgt Ion: 98 Resp: 34015
 Ion Ratio Lower Upper
 98 100
 100 65.5 51.4 77.0

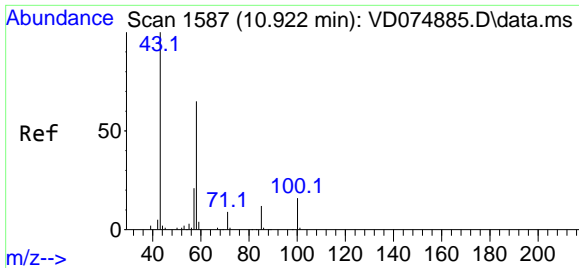


#51
 4-Methyl-2-Pentanone
 Concen: 1.232 ug/l
 RT: 10.163 min Scan# 1458
 Delta R.T. 0.006 min
 Lab File: VD074910.D
 Acq: 12 Nov 2022 02:18



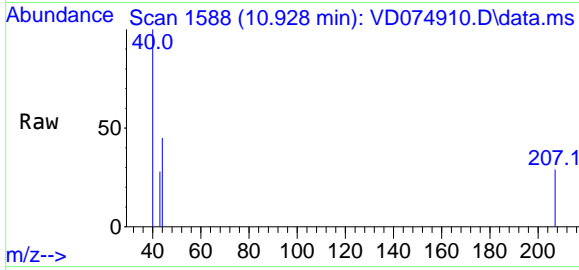
Tgt Ion: 43 Resp: 78
 Ion Ratio Lower Upper
 43 100
 58 0.0 37.8 56.6#



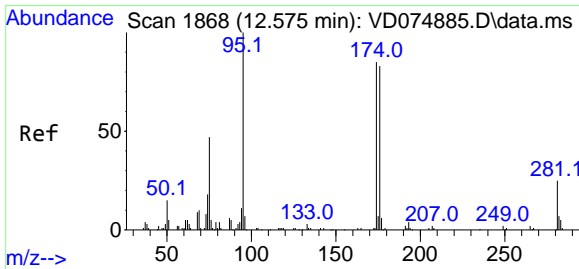
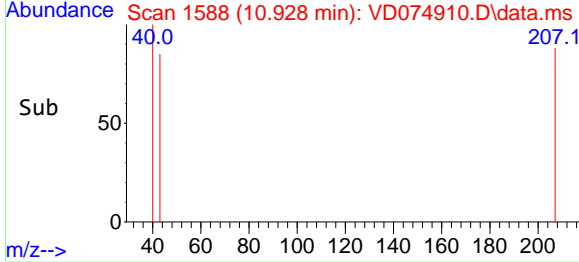
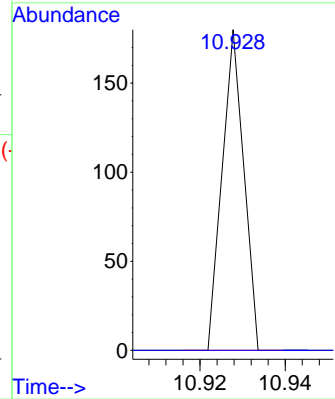


#59
 2-Hexanone
 Concen: 1.451 ug/l
 RT: 10.928 min Scan# 11
 Delta R.T. 0.006 min
 Lab File: VD074910.D
 Acq: 12 Nov 2022 02:18

Instrument : MSVOA_D
 ClientSampleId : SB-01

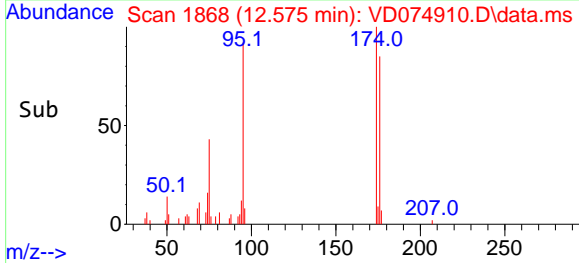
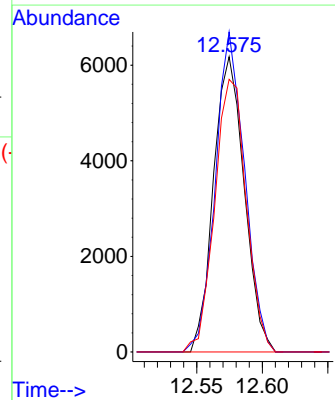
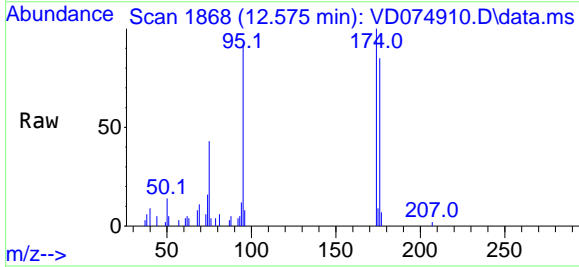


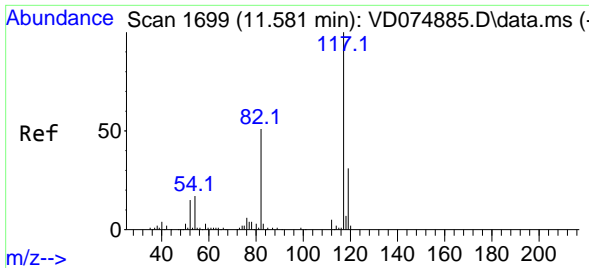
Tgt Ion: 43 Resp: 64
 Ion Ratio Lower Upper
 43 100
 58 0.0 32.0 96.2#



#62
 4-Bromofluorobenzene
 Concen: 65.114 ug/l
 RT: 12.575 min Scan# 1868
 Delta R.T. -0.000 min
 Lab File: VD074910.D
 Acq: 12 Nov 2022 02:18

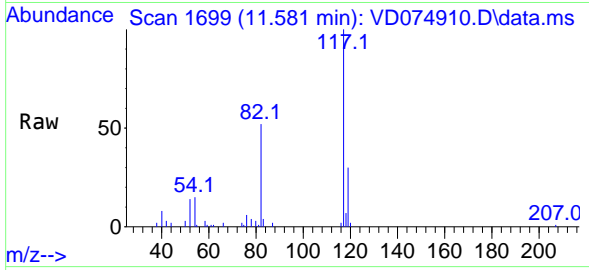
Tgt Ion: 95 Resp: 10067
 Ion Ratio Lower Upper
 95 100
 174 103.4 0.0 197.0
 176 95.1 0.0 182.6





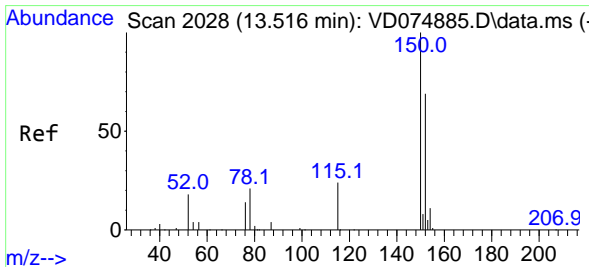
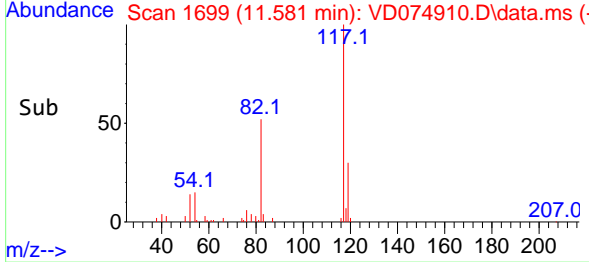
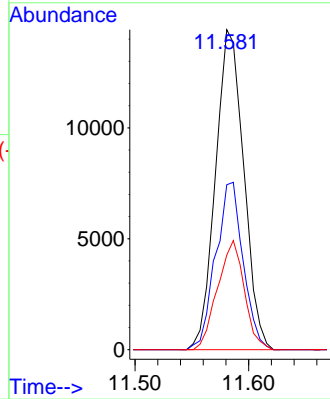
#63
 Chlorobenzene-d5
 Concen: 50.000 ug/l
 RT: 11.581 min Scan# 1699
 Delta R.T. -0.000 min
 Lab File: VD074910.D
 Acq: 12 Nov 2022 02:18

Instrument : MSVOA_D
 ClientSampleId : SB-01

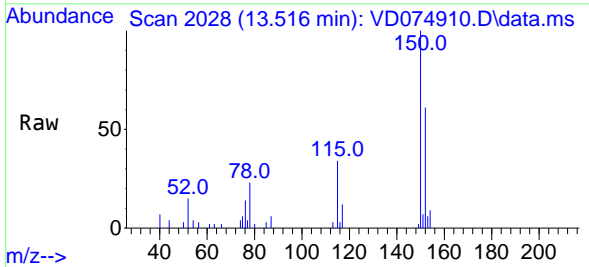


Tgt Ion:117 Resp: 24943

Ion	Ratio	Lower	Upper
117	100		
82	51.5	41.6	62.4
119	29.6	25.2	37.8

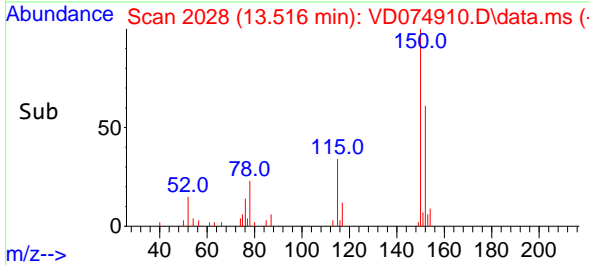
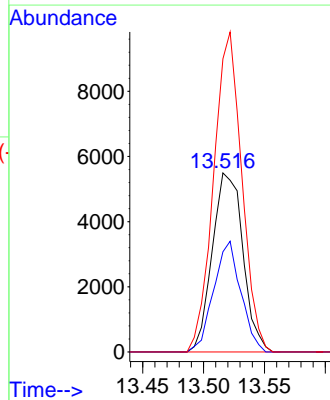


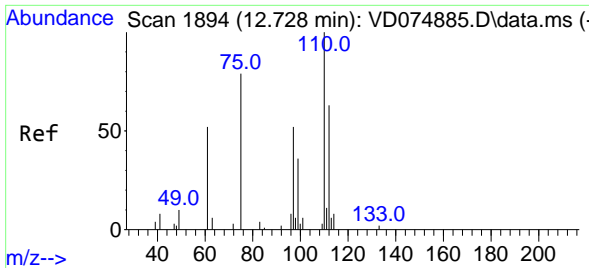
#72
 1,4-Dichlorobenzene-d4
 Concen: 50.000 ug/l
 RT: 13.516 min Scan# 2028
 Delta R.T. -0.000 min
 Lab File: VD074910.D
 Acq: 12 Nov 2022 02:18



Tgt Ion:152 Resp: 9601

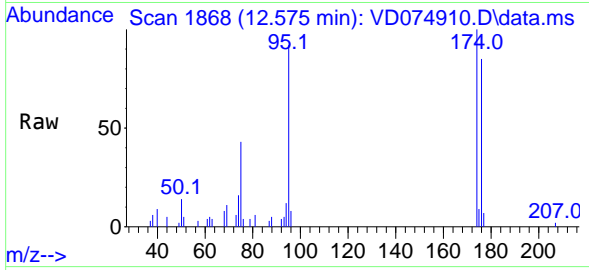
Ion	Ratio	Lower	Upper
152	100		
115	55.0	26.8	80.4
150	164.9	0.0	348.2



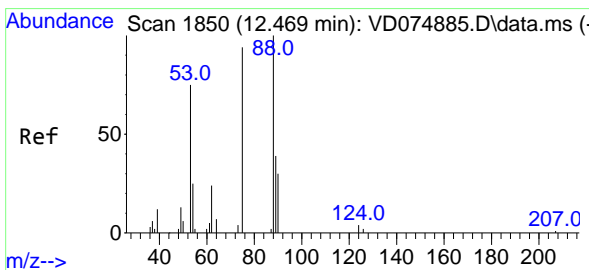
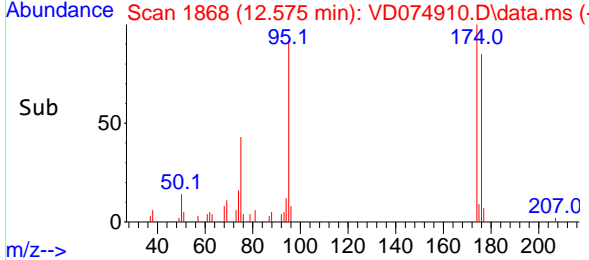
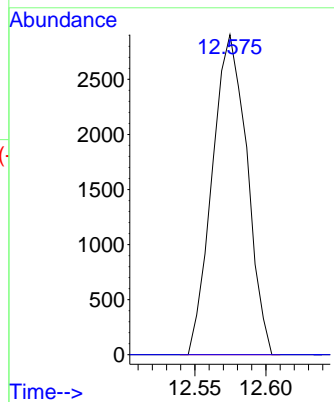


#76
 1,2,3-Trichloropropane
 Concen: 61.542 ug/l
 RT: 12.575 min Scan# 1868
 Delta R.T. -0.153 min
 Lab File: VD074910.D
 Acq: 12 Nov 2022 02:18

Instrument : MSVOA_D
 ClientSampleId : SB-01

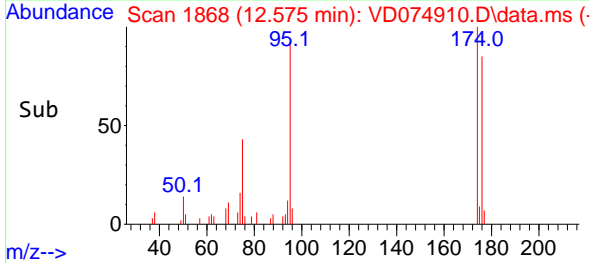
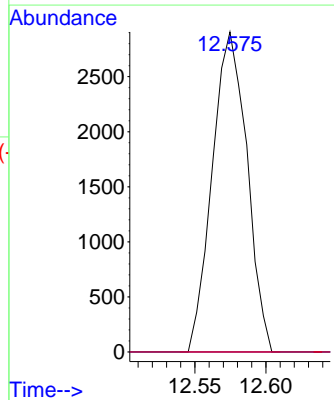
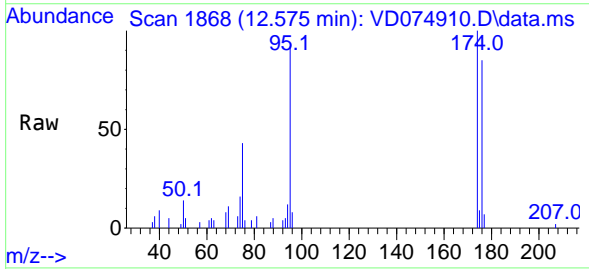


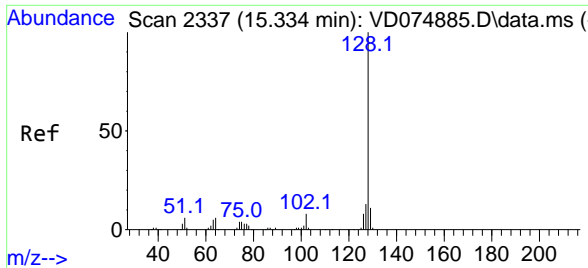
Tgt Ion: 75 Resp: 4942
 Ion Ratio Lower Upper
 75 100
 77 0.0 185.8 557.5#



#81
 trans-1,4-Dichloro-2-butene
 Concen: 151.395 ug/l
 RT: 12.575 min Scan# 1868
 Delta R.T. 0.106 min
 Lab File: VD074910.D
 Acq: 12 Nov 2022 02:18

Tgt Ion: 75 Resp: 4942
 Ion Ratio Lower Upper
 75 100
 53 0.0 63.8 95.6#
 89 0.0 38.2 57.4#





#95
 Naphthalene
 Concen: 1.375 ug/l
 RT: 15.345 min Scan# 21
 Delta R.T. 0.011 min
 Lab File: VD074910.D
 Acq: 12 Nov 2022 02:18

Instrument : MSVOA_D
 ClientSampleId : SB-01

Tgt Ion:128 Resp: 425

Ion	Ratio	Lower	Upper
128	100		
127	0.0	10.6	16.0#
129	0.0	8.3	12.5#

