

Data Path : Z:\voasrv\HPCHEM1\MSVOA_D\Data\VD011023\
 Data File : VD075108.D
 Acq On : 10 Jan 2023 16:39
 Operator : KP/SY
 Sample : 01080-05RE
 Misc : 5.31G/5.00ml/MSVOA_D/SOIL
 ALS Vial : 15 Sample Multiplier: 1

Instrument :
 MSVOA_D
 ClientSampleId :
 B-3-(15-17)

Quant Time: Jan 11 01:51:03 2023
 Quant Method : Z:\voasrv\HPCHEM1\MSVOA_D\Method\82D010923S.M
 Quant Title : SW846 8260
 QLast Update : Tue Jan 10 03:36:33 2023
 Response via : Initial Calibration

Compound	R.T.	QIon	Response	Conc	Units	Dev(Min)

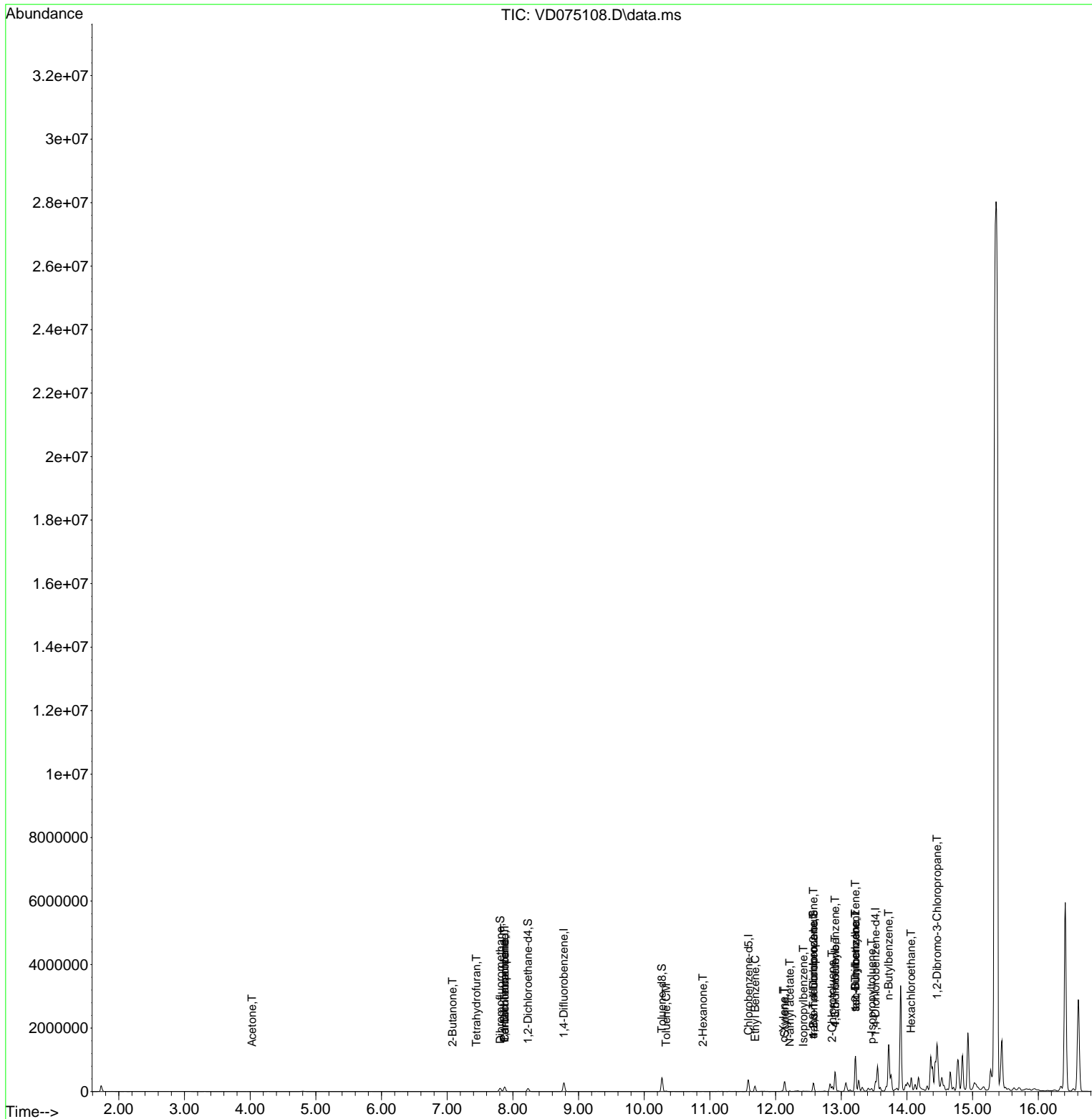
Internal Standards						
1) Pentafluorobenzene	7.875	168	103602	50.000	ug/l	# 0.00
34) 1,4-Difluorobenzene	8.775	114	240164	50.000	ug/l	0.00
63) Chlorobenzene-d5	11.587	117	211887	50.000	ug/l	0.00
72) 1,4-Dichlorobenzene-d4	13.522	152	76470	50.000	ug/l	0.00
System Monitoring Compounds						
33) 1,2-Dichloroethane-d4	8.228	65	74312	71.546	ug/l	0.00
Spiked Amount	50.000	Range	50 - 163	Recovery	=	143.100%
35) Dibromofluoromethane	7.810	113	76522	50.653	ug/l	0.00
Spiked Amount	50.000	Range	54 - 147	Recovery	=	101.300%
50) Toluene-d8	10.269	98	298431	49.822	ug/l	0.00
Spiked Amount	50.000	Range	49 - 140	Recovery	=	99.640%
62) 4-Bromofluorobenzene	12.575	95	88763	46.167	ug/l	0.00
Spiked Amount	50.000	Range	25 - 144	Recovery	=	92.340%
Target Compounds						
						Qvalue
16) Acetone	4.028	43	1740	7.070	ug/l	93
17) Carbon Disulfide	4.275	76	2007	Below Cal	#	62
20) Methylene Chloride	4.799	84	8038	Below Cal	#	93
25) 2-Butanone	7.081	43	716	2.196	ug/l	# 47
29) Tetrahydrofuran	7.446	42	282	1.538	ug/l	# 34
31) Cyclohexane	7.869	56	2629	Below Cal	#	21
36) 1,1-Dichloropropene	7.875	75	9011	4.821	ug/l	# 48
37) Ethyl Acetate	7.081	43	716	Below Cal	#	68
38) Carbon Tetrachloride	7.875	117	11596	7.081	ug/l	# 15
52) Toluene	10.334	92	6002	1.660	ug/l	98
59) 2-Hexanone	10.893	43	1961	3.087	ug/l	# 25
67) Ethyl Benzene	11.687	91	123683	17.416	ug/l	99
69) o-Xylene	12.122	106	8962	3.378	ug/l	100
70) Styrene	12.140	104	152322	34.354	ug/l	91
73) Isopropylbenzene	12.422	105	6417	1.122	ug/l	98
74) N-amyl acetate	12.216	43	3904	3.006	ug/l	# 67
76) 1,2,3-Trichloropropane	12.575	75	44999	61.671	ug/l	# 1
79) 2-Chlorotoluene	12.857	91	9311	2.471	ug/l	# 39
80) 1,3,5-Trimethylbenzene	12.904	105	319791	68.944	ug/l	99
81) trans-1,4-Dichloro-2-b...	12.575	75	44999	163.783	ug/l	# 16
82) 4-Chlorotoluene	12.904	91	35452	9.184	ug/l	# 40
83) tert-Butylbenzene	13.216	119	74729	18.254	ug/l	# 63
84) 1,2,4-Trimethylbenzene	13.216	105	607606	135.543	ug/l	99
85) sec-Butylbenzene	13.216	105	607606	97.955	ug/l	# 56
86) p-Isopropyltoluene	13.463	119	23909	4.772	ug/l	93
89) n-Butylbenzene	13.722	91	147387	29.910	ug/l	# 59
90) Hexachloroethane	14.063	117	20212	23.143	ug/l	# 14
92) 1,2-Dibromo-3-Chloropr...	14.457	75	36917	234.271	ug/l	# 1

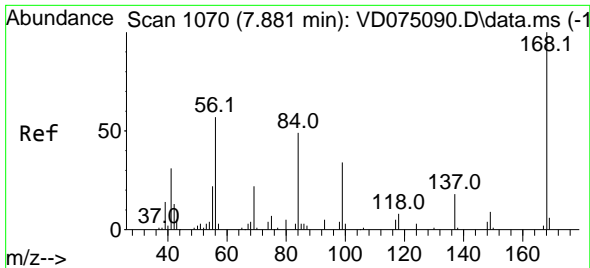
(#) = qualifier out of range (m) = manual integration (+) = signals summed

Data Path : Z:\voasrv\HPCHEM1\MSVOA_D\Data\VD011023\
 Data File : VD075108.D
 Acq On : 10 Jan 2023 16:39
 Operator : KP/SY
 Sample : 01080-05RE
 Misc : 5.31G/5.00ml/MSVOA_D/SOIL
 ALS Vial : 15 Sample Multiplier: 1

Instrument :
 MSVOA_D
 ClientSampleId :
 B-3-(15-17)

Quant Time: Jan 11 01:51:03 2023
 Quant Method : Z:\voasrv\HPCHEM1\MSVOA_D\Method\82D010923S.M
 Quant Title : SW846 8260
 QLast Update : Tue Jan 10 03:36:33 2023
 Response via : Initial Calibration

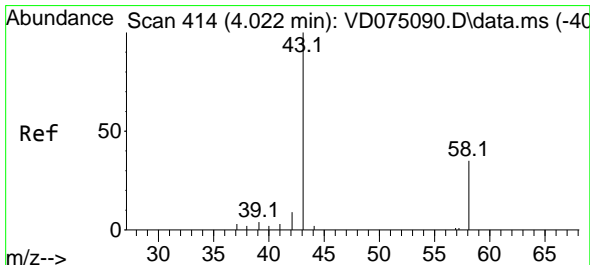
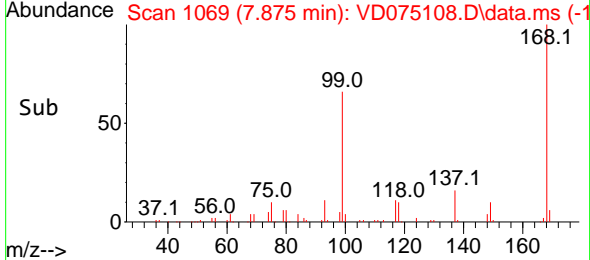
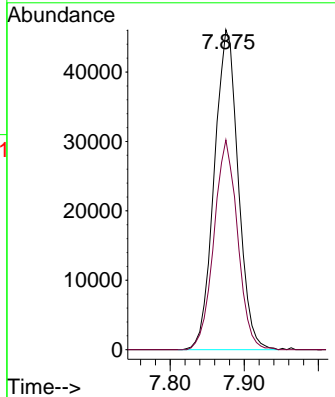
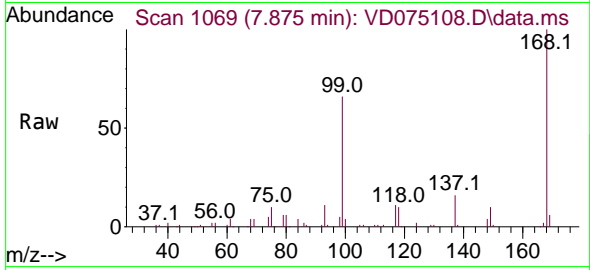




#1
 Pentafluorobenzene
 Concen: 50.000 ug/l
 RT: 7.875 min Scan# 1070
 Delta R.T. -0.006 min
 Lab File: VD075108.D
 Acq: 10 Jan 2023 16:39

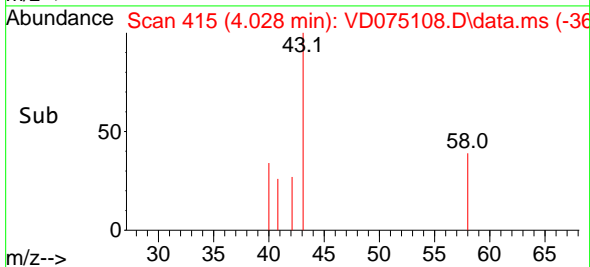
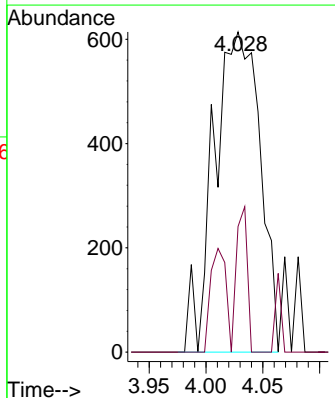
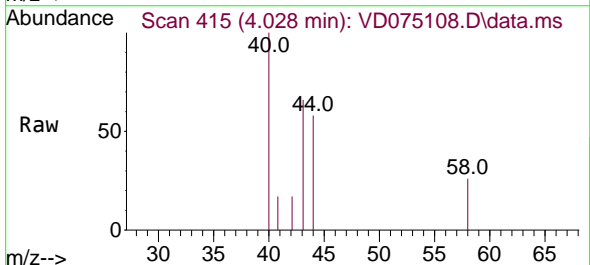
Instrument : MSVOA_D
 ClientSampleId : B-3-(15-17)

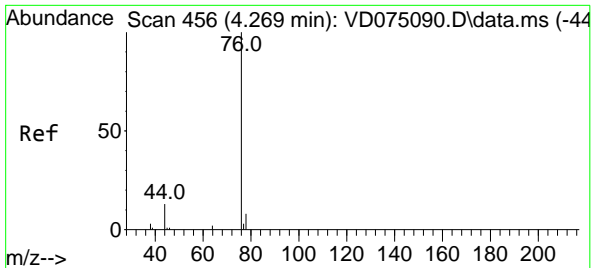
Tgt Ion:168 Resp: 103602
 Ion Ratio Lower Upper
 168 100
 99 65.6 43.2 64.8#



#16
 Acetone
 Concen: 7.070 ug/l
 RT: 4.028 min Scan# 415
 Delta R.T. 0.006 min
 Lab File: VD075108.D
 Acq: 10 Jan 2023 16:39

Tgt Ion: 43 Resp: 1740
 Ion Ratio Lower Upper
 43 100
 58 39.3 28.3 42.5

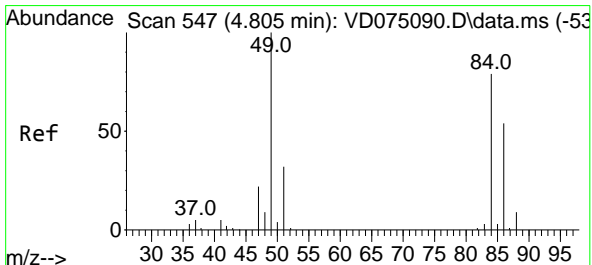
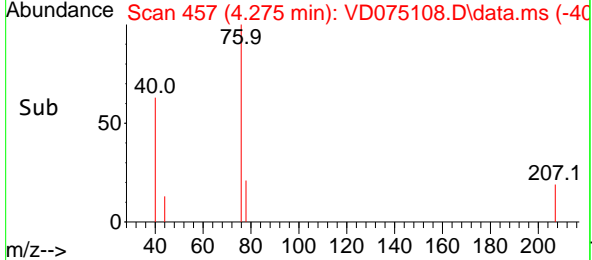
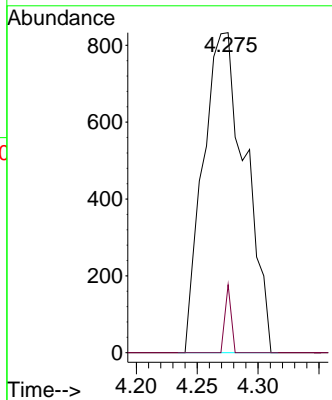
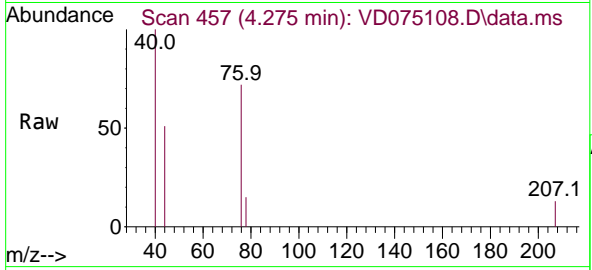




#17
 Carbon Disulfide
 Concen: Below Cal
 RT: 4.275 min Scan# 41
 Delta R.T. 0.006 min
 Lab File: VD075108.D
 Acq: 10 Jan 2023 16:39

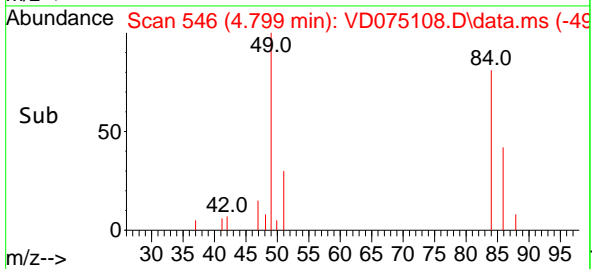
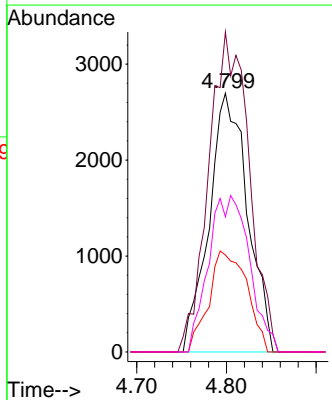
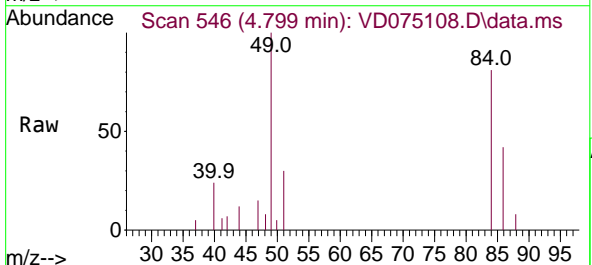
Instrument : MSVOA_D
 ClientSampleId : B-3-(15-17)

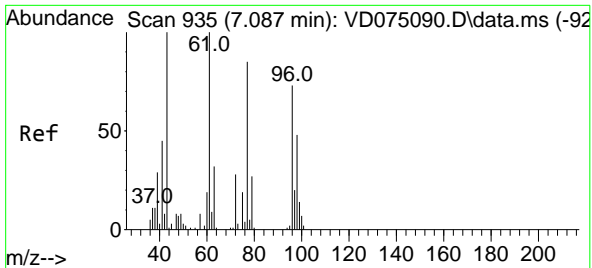
Tgt Ion	Resp	Lower	Upper
76	100		
78	21.2	6.3	9.5#



#20
 Methylene Chloride
 Concen: Below Cal
 RT: 4.799 min Scan# 546
 Delta R.T. -0.006 min
 Lab File: VD075108.D
 Acq: 10 Jan 2023 16:39

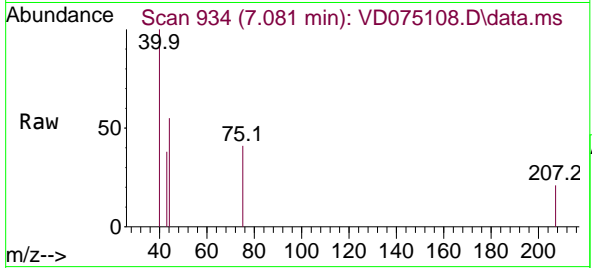
Tgt Ion	Resp	Lower	Upper
84	100		
49	123.6	100.6	151.0
51	37.5	31.8	47.8
86	52.2	54.1	81.1#



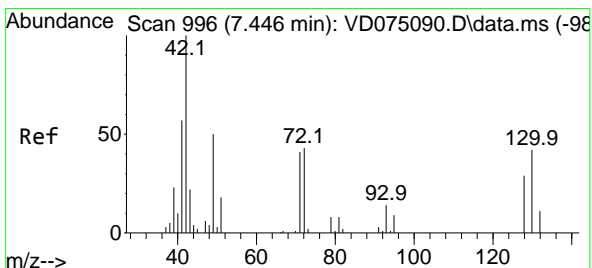
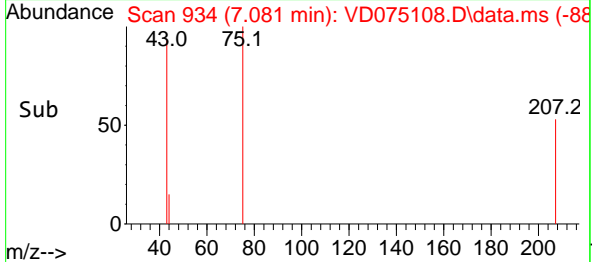
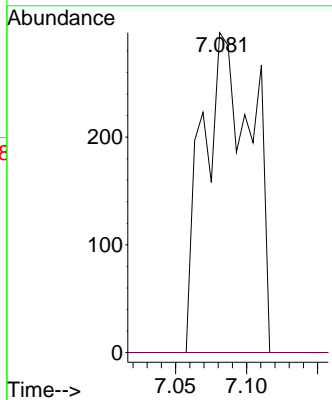


#25
 2-Butanone
 Concen: 2.196 ug/l
 RT: 7.081 min Scan# 911
 Delta R.T. -0.006 min
 Lab File: VD075108.D
 Acq: 10 Jan 2023 16:39

Instrument : MSVOA_D
 ClientSampleId : B-3-(15-17)

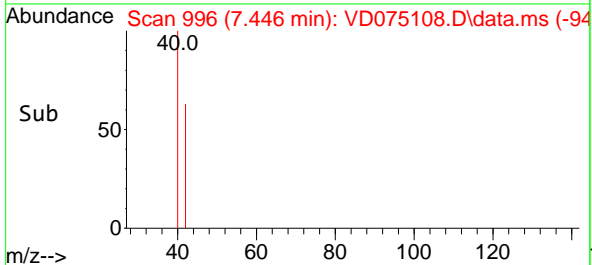
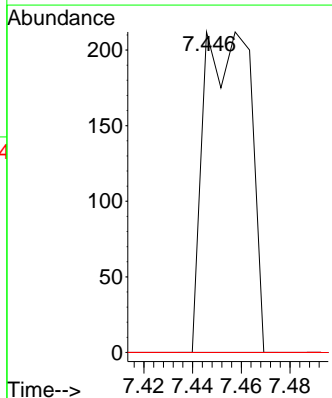
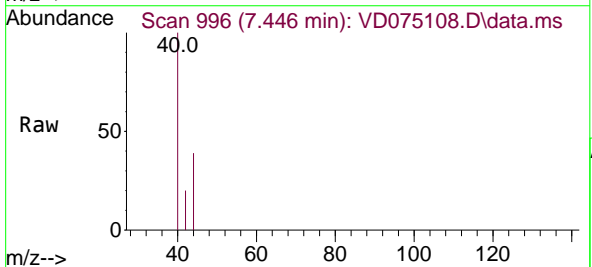


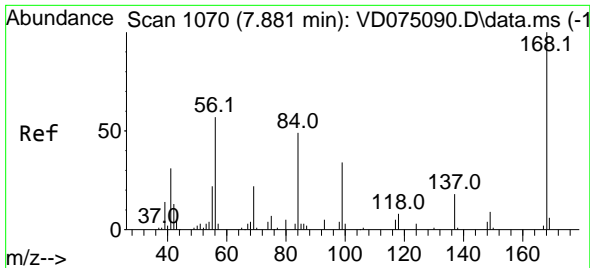
Tgt Ion: 43 Resp: 716
 Ion Ratio Lower Upper
 43 100
 72 0.0 22.6 33.8#



#29
 Tetrahydrofuran
 Concen: 1.538 ug/l
 RT: 7.446 min Scan# 996
 Delta R.T. 0.000 min
 Lab File: VD075108.D
 Acq: 10 Jan 2023 16:39

Tgt Ion: 42 Resp: 282
 Ion Ratio Lower Upper
 42 100
 72 0.0 34.3 51.5#
 71 0.0 31.2 46.8#



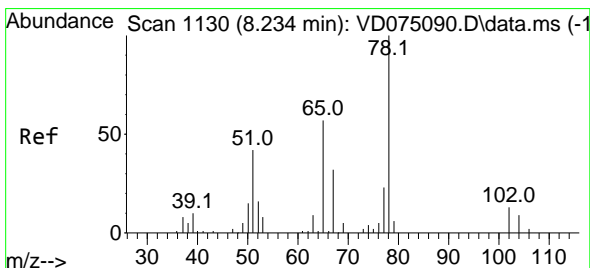
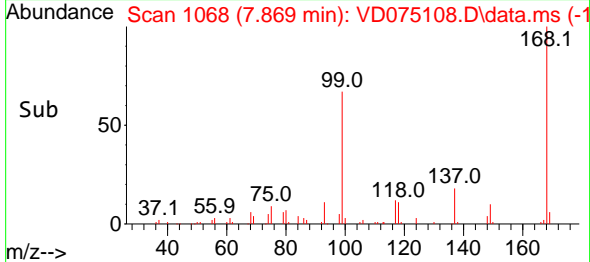
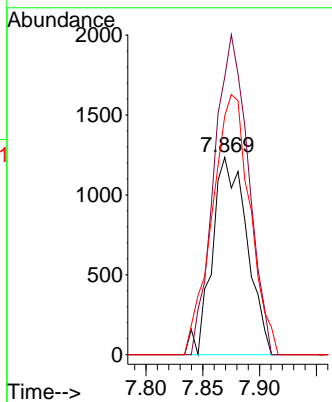
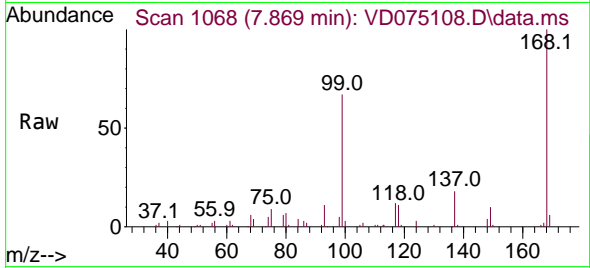


#31
 Cyclohexane
 Concen: Below Cal
 RT: 7.869 min Scan# 1108
 Delta R.T. -0.012 min
 Lab File: VD075108.D
 Acq: 10 Jan 2023 16:39

Instrument : MSVOA_D
 ClientSampleId : B-3-(15-17)

Tgt Ion: 56 Resp: 2629

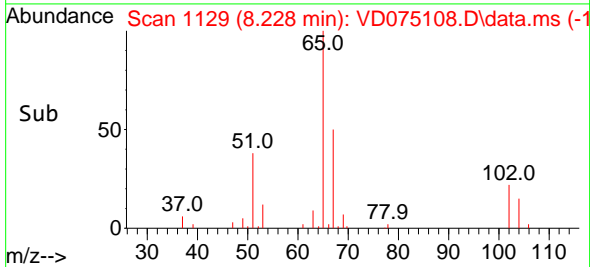
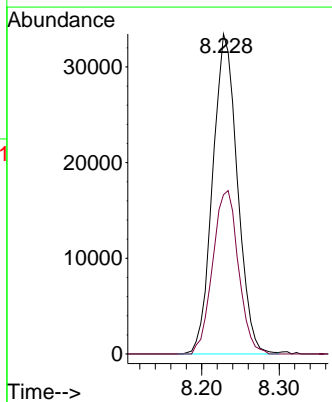
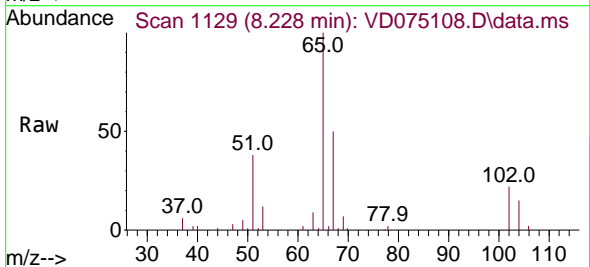
Ion	Ratio	Lower	Upper
56	100		
69	140.8	30.4	45.6#
84	121.1	68.6	102.8#

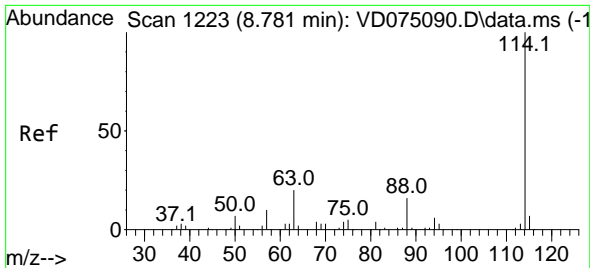


#33
 1,2-Dichloroethane-d4
 Concen: 71.546 ug/l
 RT: 8.228 min Scan# 1129
 Delta R.T. -0.006 min
 Lab File: VD075108.D
 Acq: 10 Jan 2023 16:39

Tgt Ion: 65 Resp: 74312

Ion	Ratio	Lower	Upper
65	100		
67	53.0	0.0	109.0



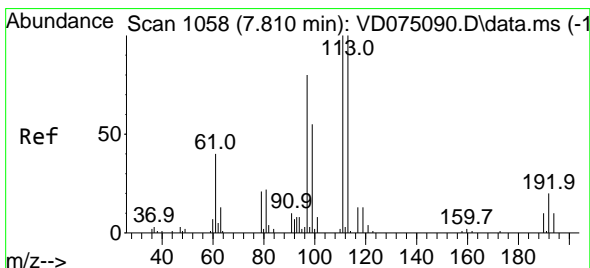
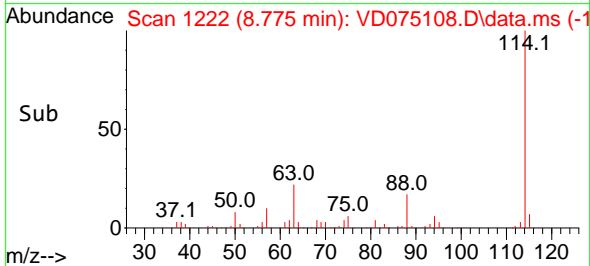
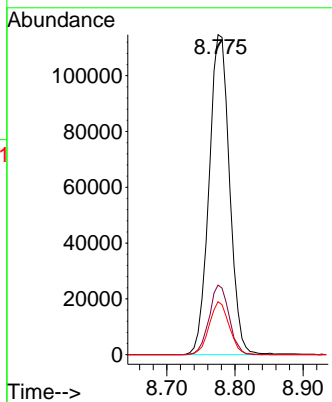
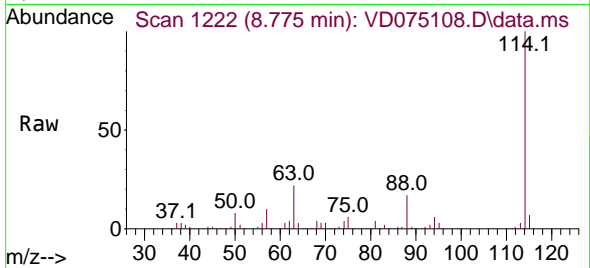


#34
 1,4-Difluorobenzene
 Concen: 50.000 ug/l
 RT: 8.775 min Scan# 11
 Delta R.T. -0.006 min
 Lab File: VD075108.D
 Acq: 10 Jan 2023 16:39

Instrument : MSVOA_D
 ClientSampleId : B-3-(15-17)

Tgt Ion:114 Resp: 240164

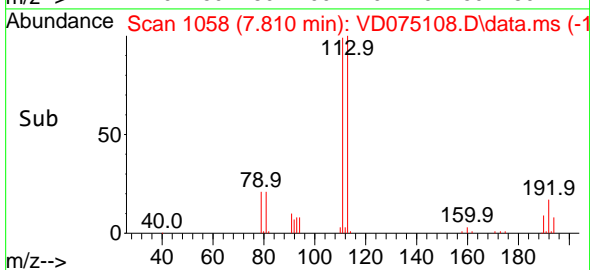
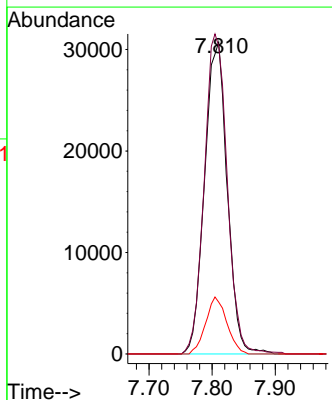
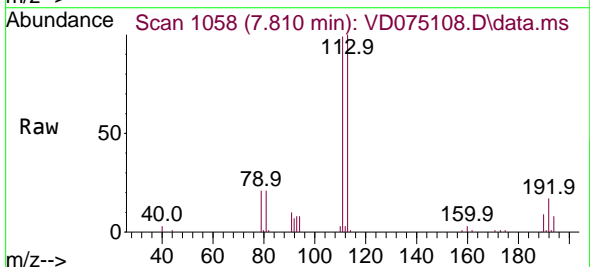
Ion	Ratio	Lower	Upper
114	100		
63	21.7	0.0	40.0
88	16.6	0.0	31.2

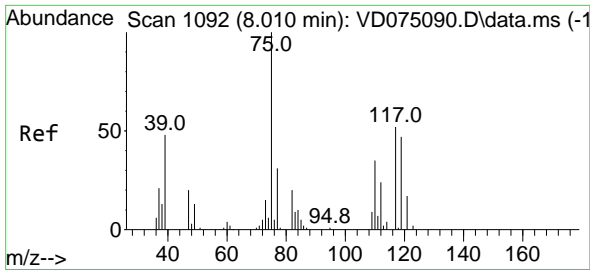


#35
 Dibromofluoromethane
 Concen: 50.653 ug/l
 RT: 7.810 min Scan# 1058
 Delta R.T. 0.000 min
 Lab File: VD075108.D
 Acq: 10 Jan 2023 16:39

Tgt Ion:113 Resp: 76522

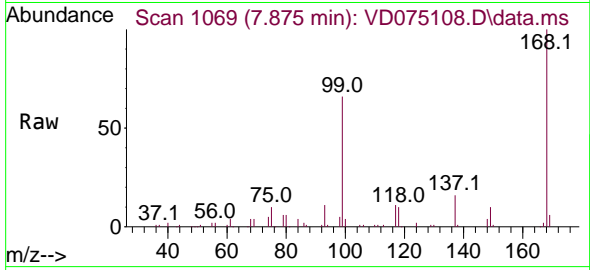
Ion	Ratio	Lower	Upper
113	100		
111	104.2	83.2	124.8
192	17.0	15.0	22.6



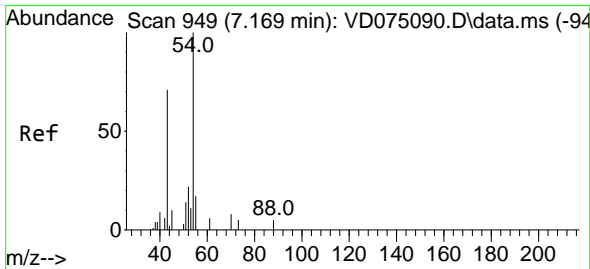
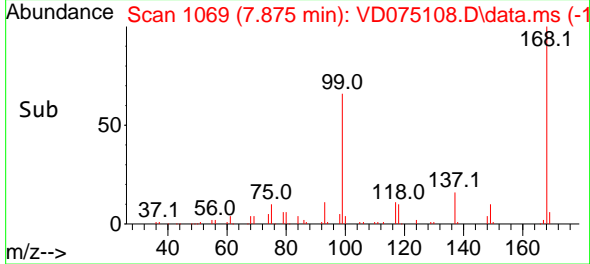
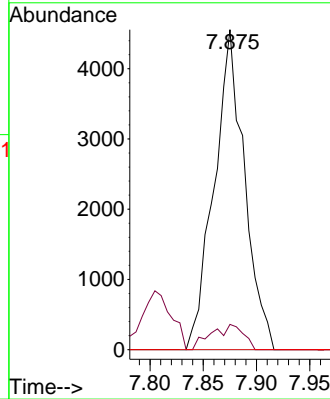


#36
 1,1-Dichloropropene
 Concen: 4.821 ug/l
 RT: 7.875 min Scan# 1092
 Delta R.T. -0.135 min
 Lab File: VD075108.D
 Acq: 10 Jan 2023 16:39

Instrument : MSVOA_D
 ClientSampleId : B-3-(15-17)

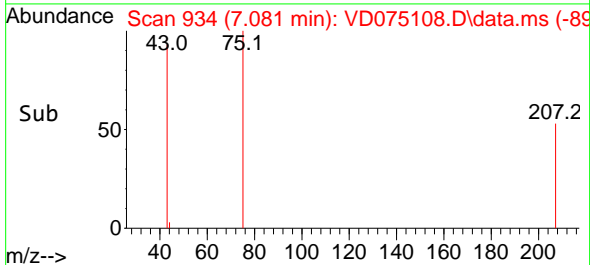
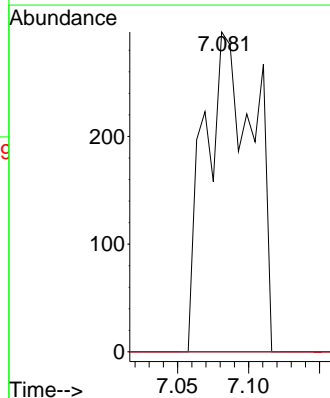
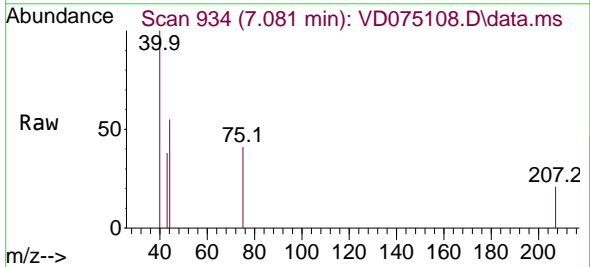


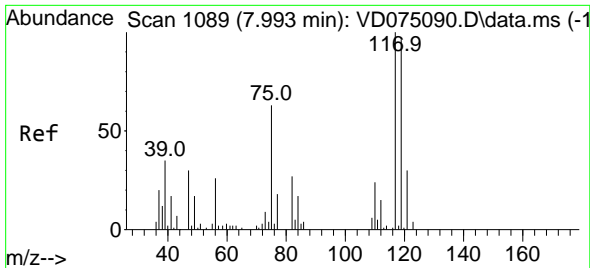
Tgt Ion: 75 Resp: 9011
 Ion Ratio Lower Upper
 75 100
 110 8.4 18.8 56.3#
 77 0.0 25.3 37.9#



#37
 Ethyl Acetate
 Concen: Below Cal
 RT: 7.081 min Scan# 934
 Delta R.T. -0.088 min
 Lab File: VD075108.D
 Acq: 10 Jan 2023 16:39

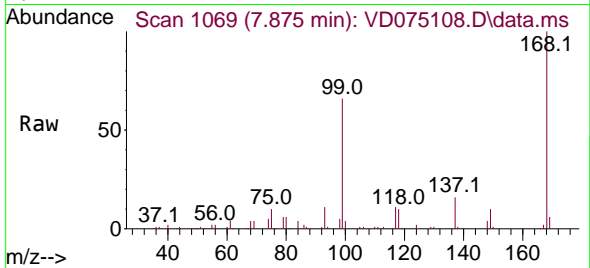
Tgt Ion: 43 Resp: 716
 Ion Ratio Lower Upper
 43 100
 61 0.0 11.4 17.2#
 70 0.0 8.4 12.6#



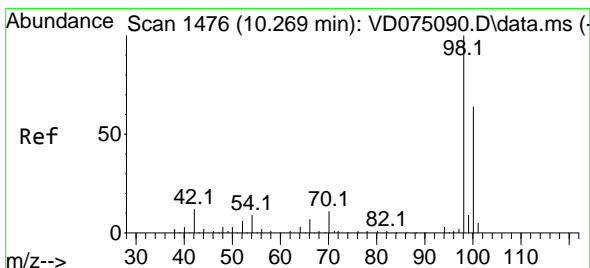
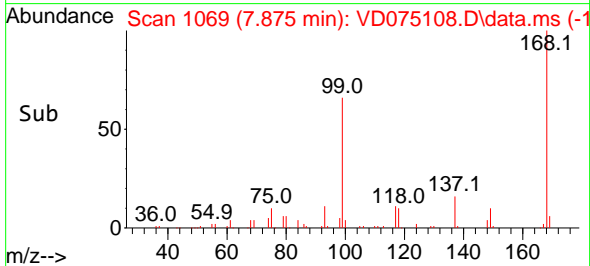
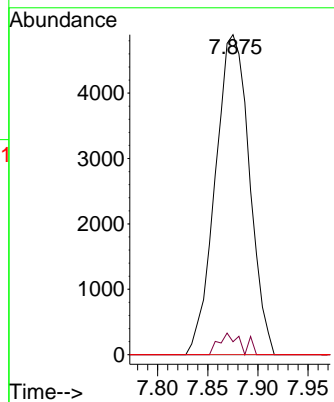


#38
 Carbon Tetrachloride
 Concen: 7.081 ug/l
 RT: 7.875 min Scan# 1089
 Delta R.T. -0.118 min
 Lab File: VD075108.D
 Acq: 10 Jan 2023 16:39

Instrument : MSVOA_D
 ClientSampleId : B-3-(15-17)

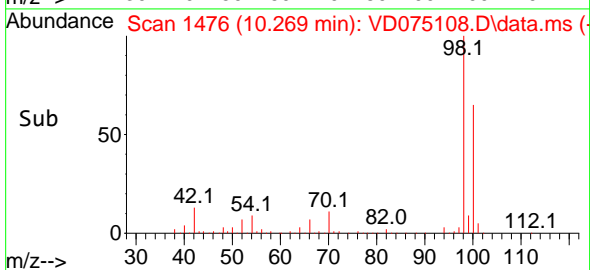
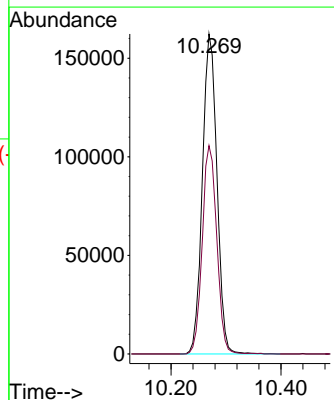
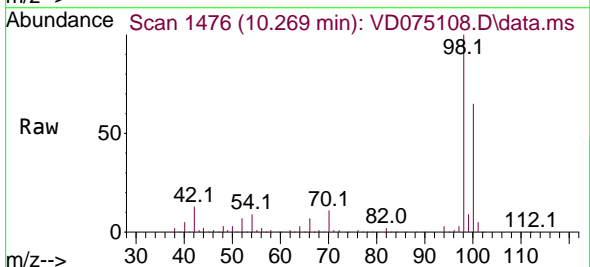


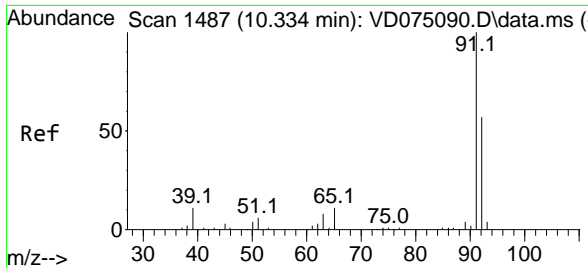
Tgt Ion:117 Resp: 11596
 Ion Ratio Lower Upper
 117 100
 119 4.1 76.8 115.2#
 121 0.0 23.8 35.8#



#50
 Toluene-d8
 Concen: 49.822 ug/l
 RT: 10.269 min Scan# 1476
 Delta R.T. 0.000 min
 Lab File: VD075108.D
 Acq: 10 Jan 2023 16:39

Tgt Ion: 98 Resp: 298431
 Ion Ratio Lower Upper
 98 100
 100 64.7 52.4 78.6

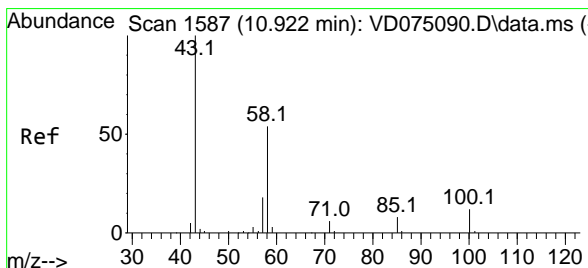
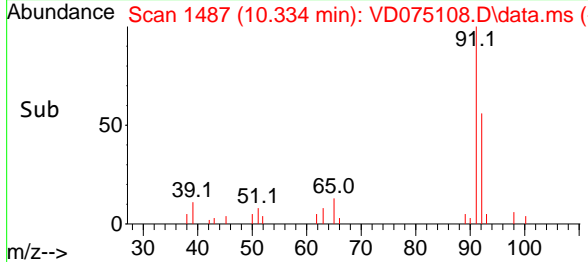
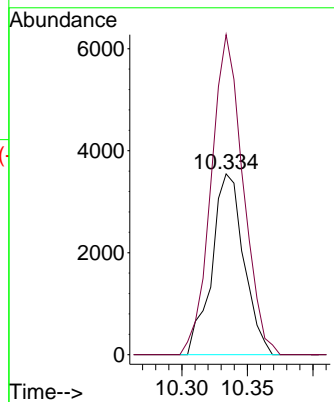
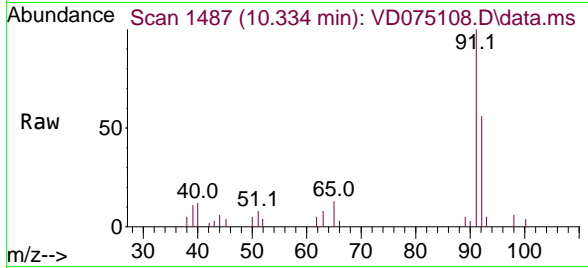




#52
 Toluene
 Concen: 1.660 ug/l
 RT: 10.334 min Scan# 1487
 Delta R.T. 0.000 min
 Lab File: VD075108.D
 Acq: 10 Jan 2023 16:39

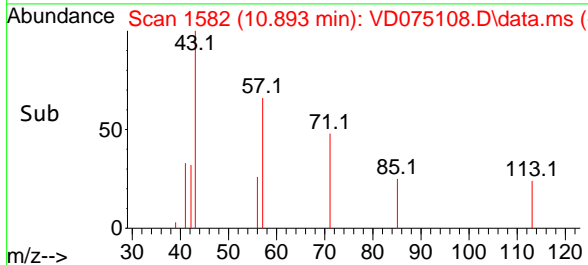
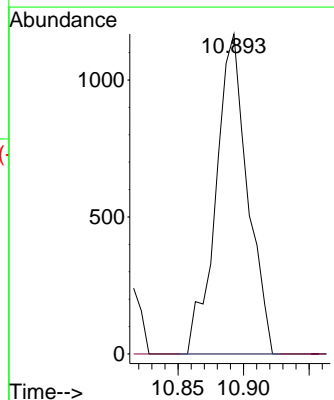
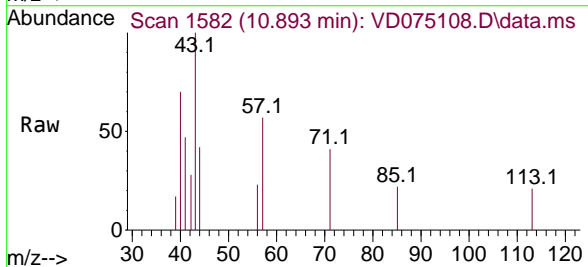
Instrument : MSVOA_D
 ClientSampleId : B-3-(15-17)

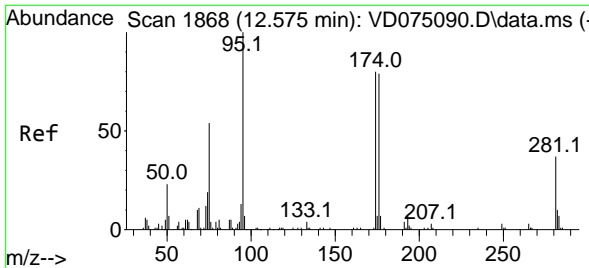
Tgt Ion: 92 Resp: 6002
 Ion Ratio Lower Upper
 92 100
 91 177.2 140.1 210.1



#59
 2-Hexanone
 Concen: 3.087 ug/l
 RT: 10.893 min Scan# 1582
 Delta R.T. -0.029 min
 Lab File: VD075108.D
 Acq: 10 Jan 2023 16:39

Tgt Ion: 43 Resp: 1961
 Ion Ratio Lower Upper
 43 100
 58 0.0 26.6 79.8#



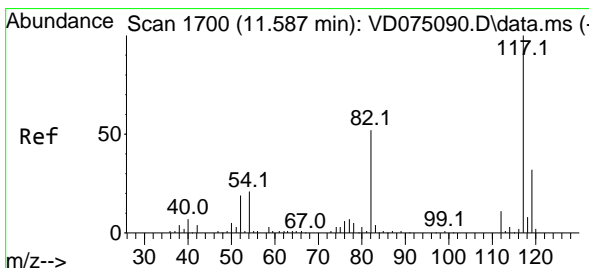
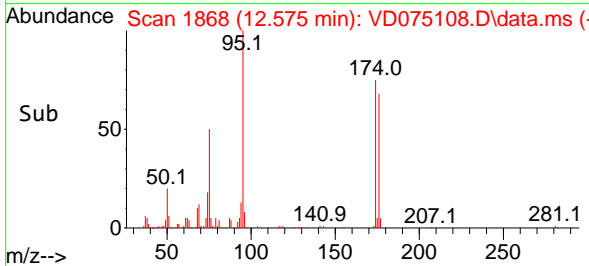
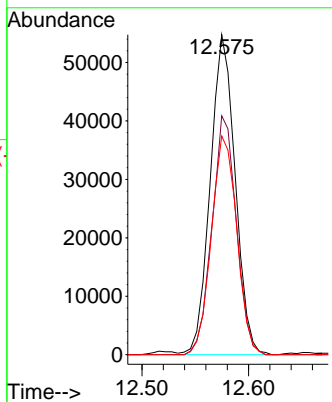
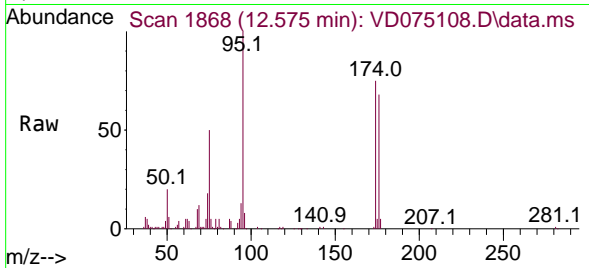


#62
 4-Bromofluorobenzene
 Concen: 46.167 ug/l
 RT: 12.575 min Scan# 1868
 Delta R.T. 0.000 min
 Lab File: VD075108.D
 Acq: 10 Jan 2023 16:39

Instrument : MSVOA_D
 ClientSampleId : B-3-(15-17)

Tgt Ion: 95 Resp: 88763

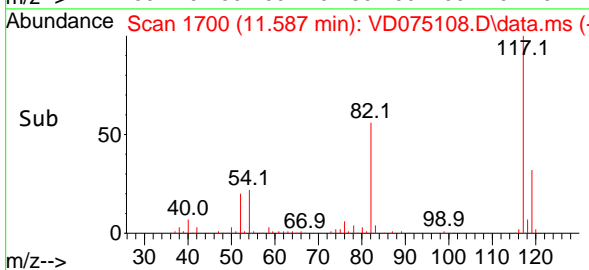
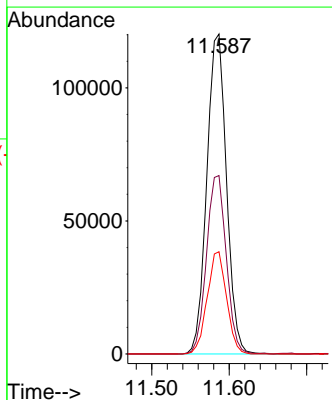
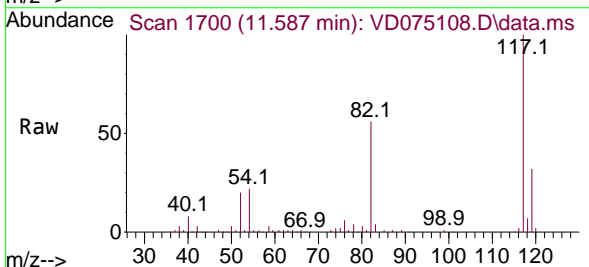
Ion	Ratio	Lower	Upper
95	100		
174	73.2	0.0	168.4
176	69.6	0.0	163.8

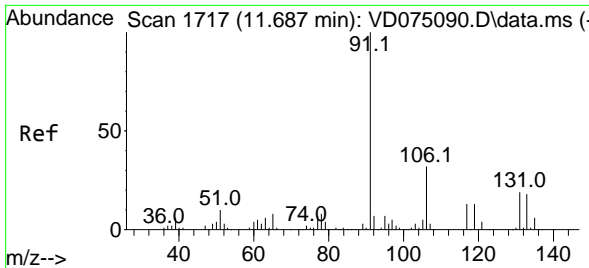


#63
 Chlorobenzene-d5
 Concen: 50.000 ug/l
 RT: 11.587 min Scan# 1700
 Delta R.T. 0.000 min
 Lab File: VD075108.D
 Acq: 10 Jan 2023 16:39

Tgt Ion: 117 Resp: 211887

Ion	Ratio	Lower	Upper
117	100		
82	55.8	41.3	61.9
119	32.0	25.8	38.6

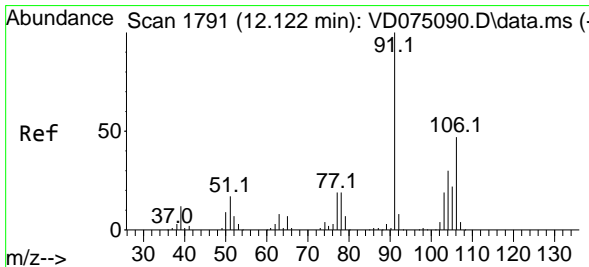
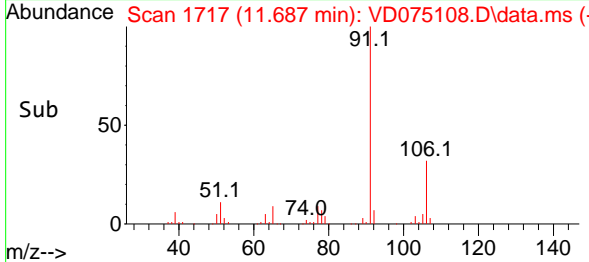
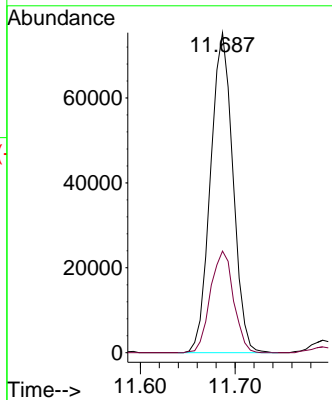
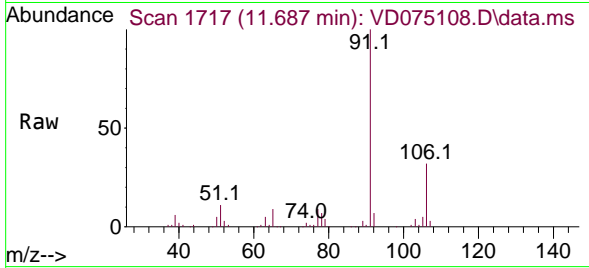




#67
 Ethyl Benzene
 Concen: 17.416 ug/l
 RT: 11.687 min Scan# 1717
 Delta R.T. 0.000 min
 Lab File: VD075108.D
 Acq: 10 Jan 2023 16:39

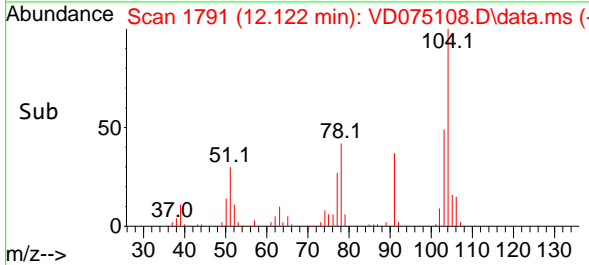
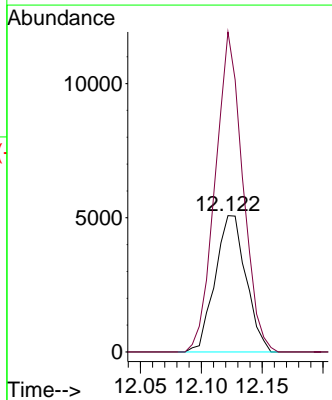
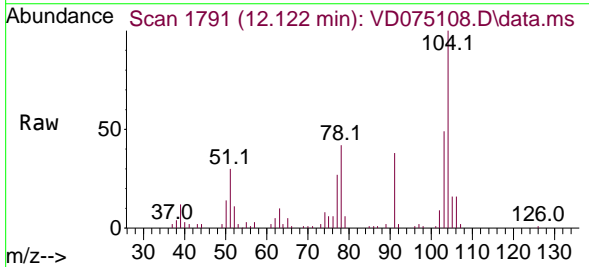
Instrument : MSVOA_D
 ClientSampleId : B-3-(15-17)

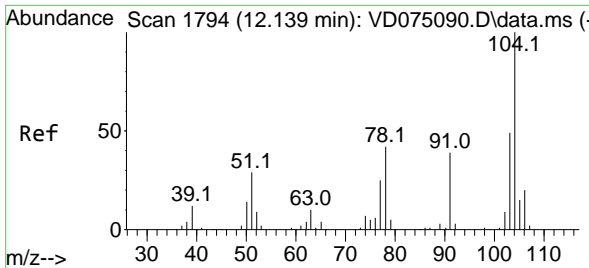
Tgt Ion: 91 Resp: 123683
 Ion Ratio Lower Upper
 91 100
 106 31.7 25.8 38.6



#69
 o-Xylene
 Concen: 3.378 ug/l
 RT: 12.122 min Scan# 1791
 Delta R.T. 0.000 min
 Lab File: VD075108.D
 Acq: 10 Jan 2023 16:39

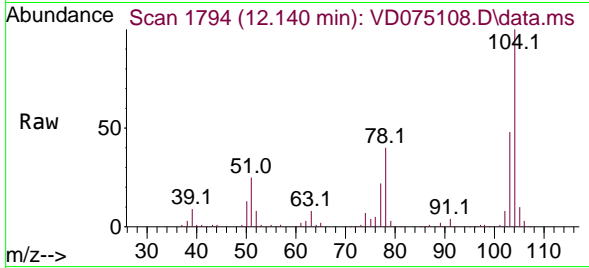
Tgt Ion: 106 Resp: 8962
 Ion Ratio Lower Upper
 106 100
 91 209.6 104.5 313.3





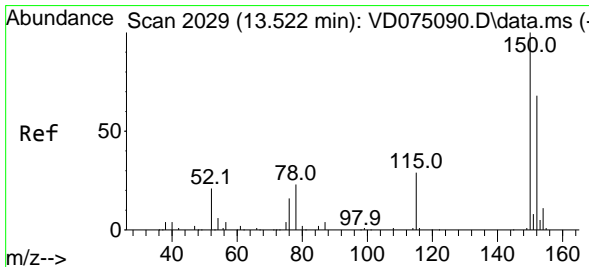
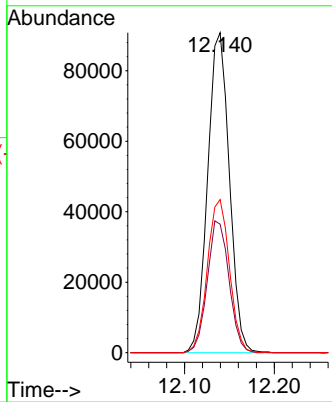
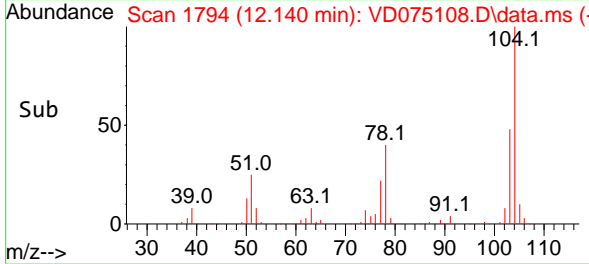
#70
 Styrene
 Concen: 34.354 ug/l
 RT: 12.140 min Scan# 1794
 Delta R.T. 0.000 min
 Lab File: VD075108.D
 Acq: 10 Jan 2023 16:39

Instrument : MSVOA_D
 ClientSampleId : B-3-(15-17)

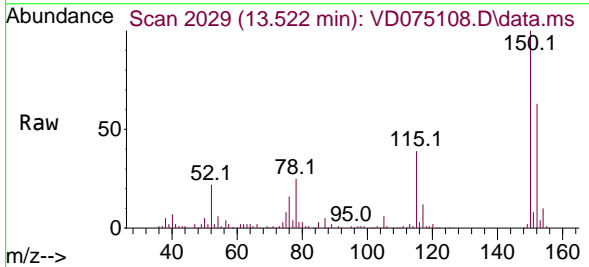


Tgt Ion:104 Resp: 152322

Ion	Ratio	Lower	Upper
104	100		
78	41.4	38.2	57.2
103	48.7	43.9	65.9

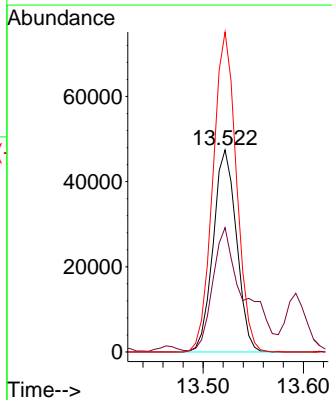
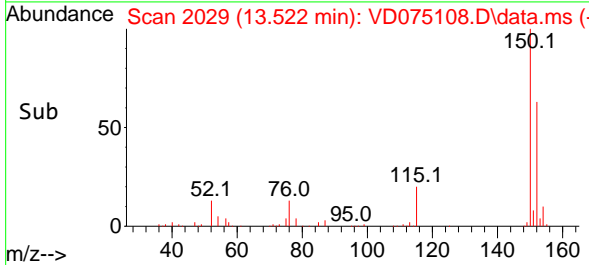


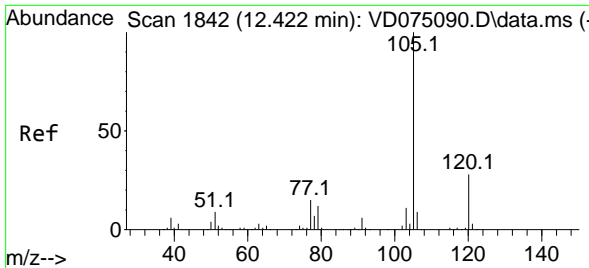
#72
 1,4-Dichlorobenzene-d4
 Concen: 50.000 ug/l
 RT: 13.522 min Scan# 2029
 Delta R.T. 0.000 min
 Lab File: VD075108.D
 Acq: 10 Jan 2023 16:39



Tgt Ion:152 Resp: 76470

Ion	Ratio	Lower	Upper
152	100		
115	83.8	28.7	86.1
150	159.5	0.0	343.2



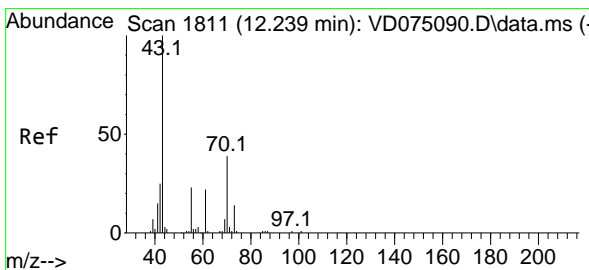
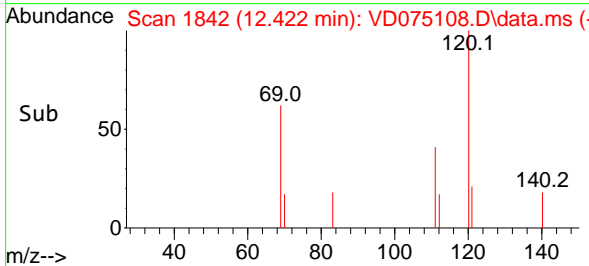
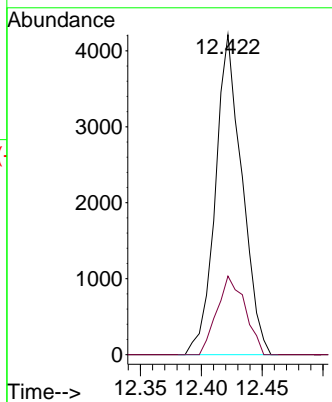
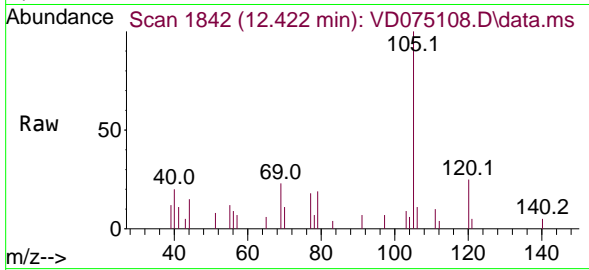


#73
 Isopropylbenzene
 Concen: 1.122 ug/l
 RT: 12.422 min Scan# 1842
 Delta R.T. 0.000 min
 Lab File: VD075108.D
 Acq: 10 Jan 2023 16:39

Instrument : MSVOA_D
 ClientSampleId : B-3-(15-17)

Tgt Ion: 105 Resp: 6417

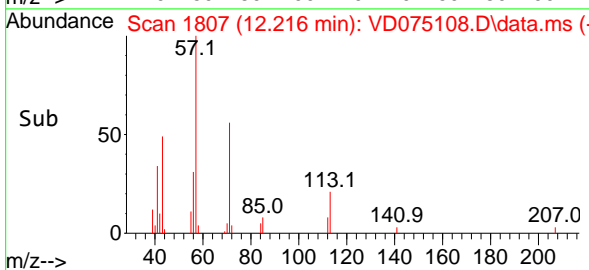
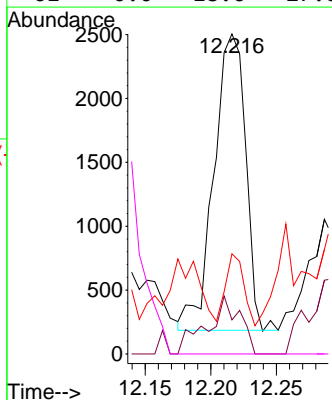
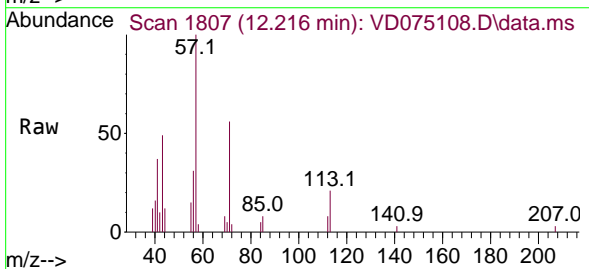
Ion	Ratio	Lower	Upper
105	100		
120	25.9	13.6	40.7

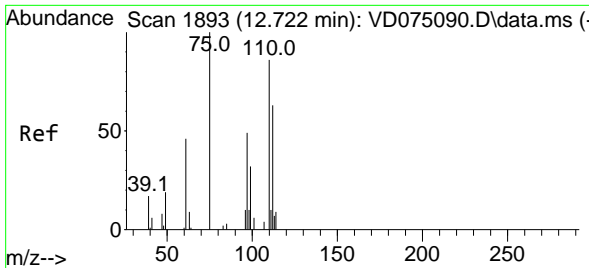


#74
 N-ethyl acetate
 Concen: 3.006 ug/l
 RT: 12.216 min Scan# 1807
 Delta R.T. -0.023 min
 Lab File: VD075108.D
 Acq: 10 Jan 2023 16:39

Tgt Ion: 43 Resp: 3904

Ion	Ratio	Lower	Upper
43	100		
70	20.1	33.4	50.0#
55	13.7	17.4	26.0#
61	0.0	18.6	27.8#

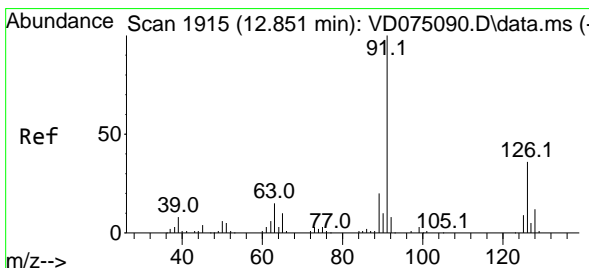
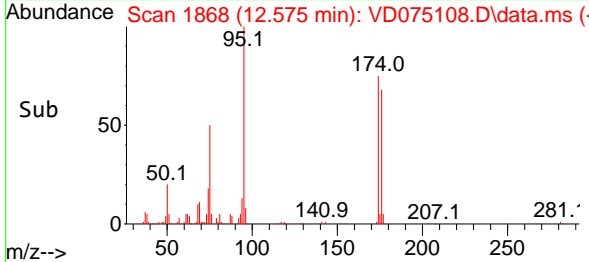
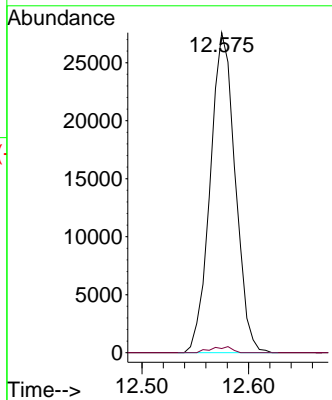
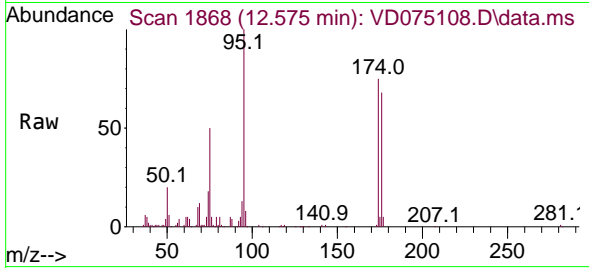




#76
 1,2,3-Trichloropropane
 Concen: 61.671 ug/l
 RT: 12.575 min Scan# 1893
 Delta R.T. -0.147 min
 Lab File: VD075108.D
 Acq: 10 Jan 2023 16:39

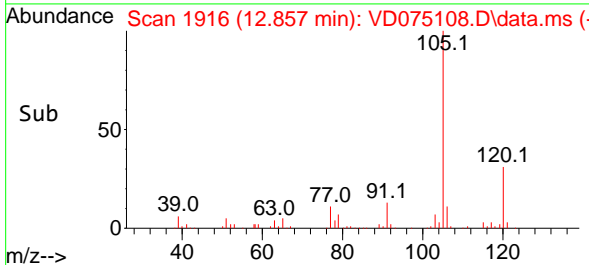
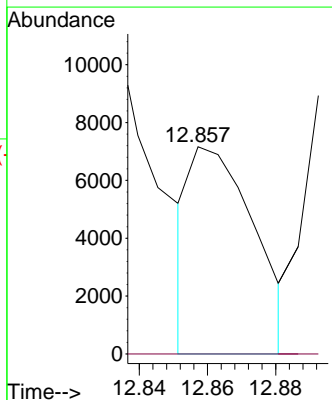
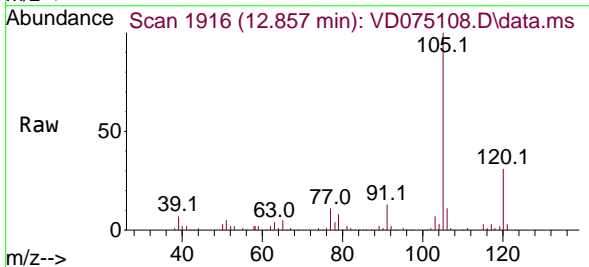
Instrument : MSVOA_D
 ClientSampleId : B-3-(15-17)

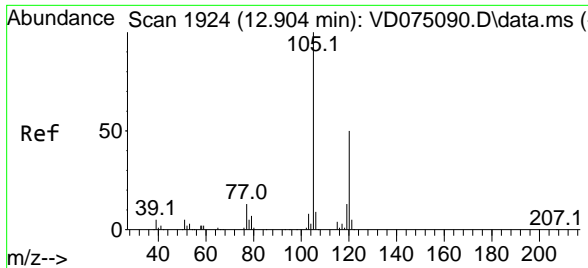
Tgt Ion: 75 Resp: 44999
 Ion Ratio Lower Upper
 75 100
 77 0.0 149.0 447.1#



#79
 2-Chlorotoluene
 Concen: 2.471 ug/l
 RT: 12.857 min Scan# 1916
 Delta R.T. 0.006 min
 Lab File: VD075108.D
 Acq: 10 Jan 2023 16:39

Tgt Ion: 91 Resp: 9311
 Ion Ratio Lower Upper
 91 100
 126 0.0 17.7 53.1#

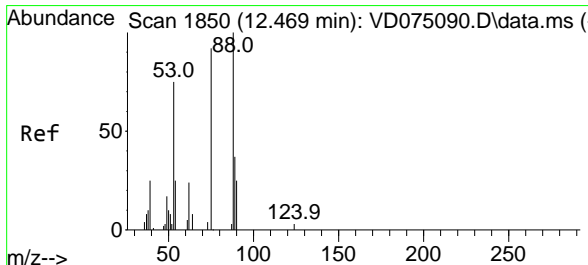
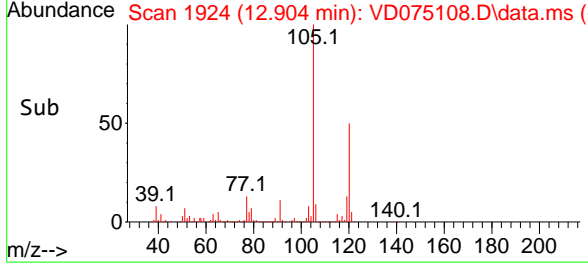
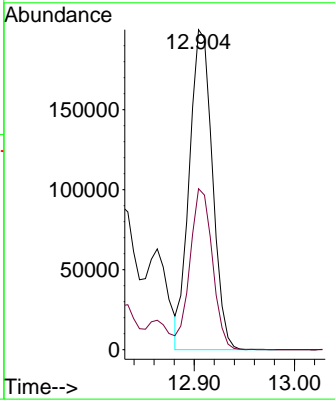
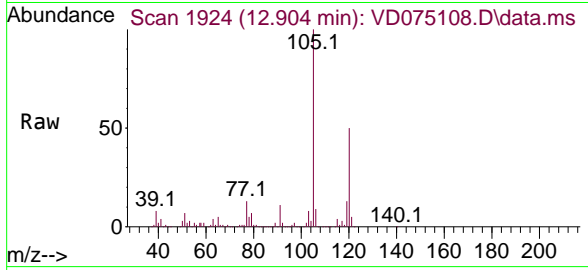




#80
 1,3,5-Trimethylbenzene
 Concen: 68.944 ug/l
 RT: 12.904 min Scan# 1924
 Delta R.T. 0.000 min
 Lab File: VD075108.D
 Acq: 10 Jan 2023 16:39

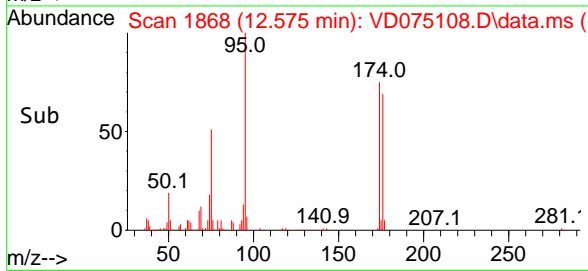
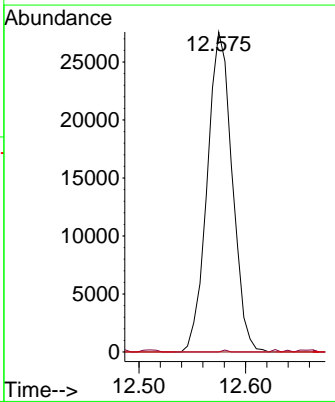
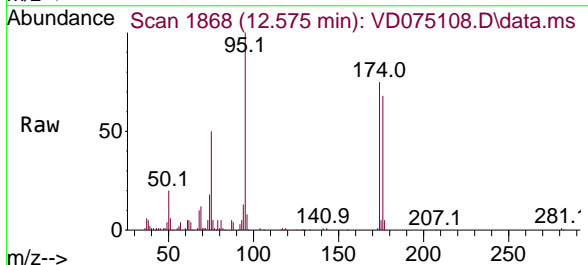
Instrument : MSVOA_D
 ClientSampleId : B-3-(15-17)

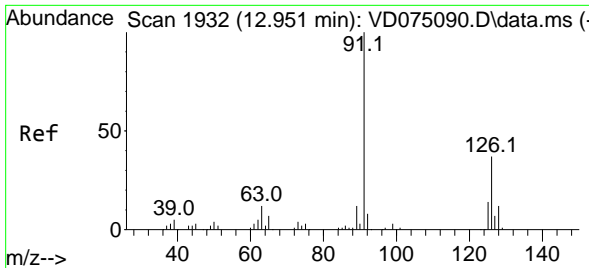
Tgt Ion:105 Resp: 319791
 Ion Ratio Lower Upper
 105 100
 120 48.9 24.8 74.3



#81
 trans-1,4-Dichloro-2-butene
 Concen: 163.783 ug/l
 RT: 12.575 min Scan# 1868
 Delta R.T. 0.106 min
 Lab File: VD075108.D
 Acq: 10 Jan 2023 16:39

Tgt Ion: 75 Resp: 44999
 Ion Ratio Lower Upper
 75 100
 53 0.1 68.6 103.0#
 89 0.0 33.4 50.0#

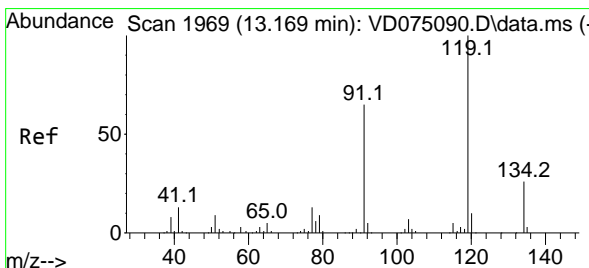
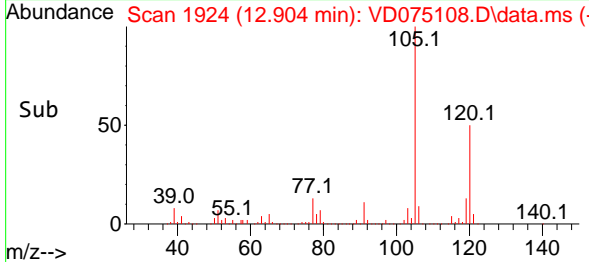
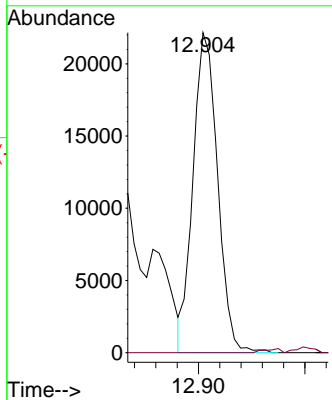
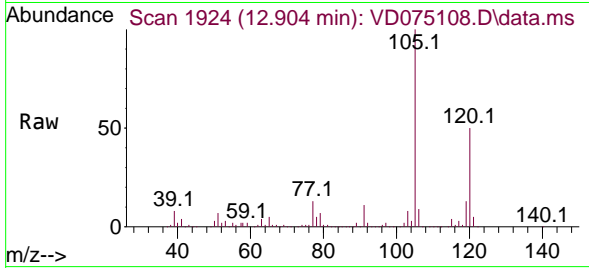




#82
 4-Chlorotoluene
 Concen: 9.184 ug/l
 RT: 12.904 min Scan# 1924
 Delta R.T. -0.047 min
 Lab File: VD075108.D
 Acq: 10 Jan 2023 16:39

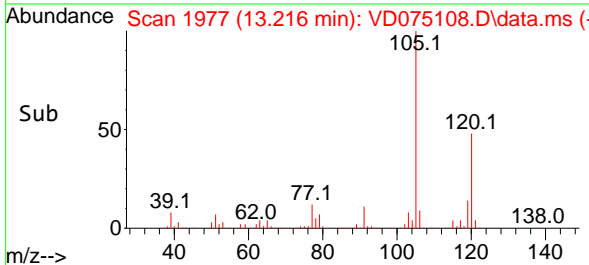
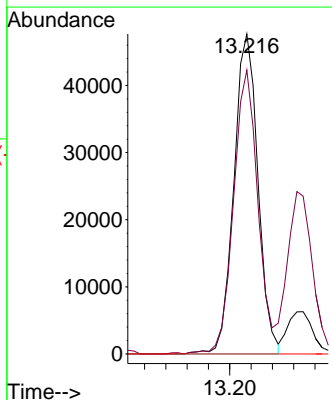
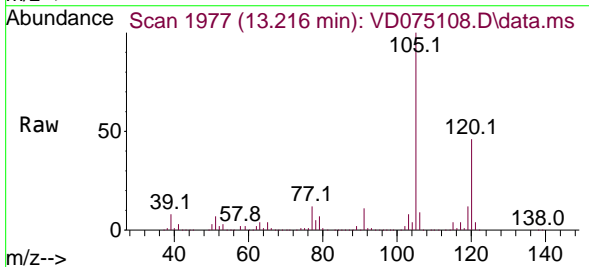
Instrument : MSVOA_D
 ClientSampleId : B-3-(15-17)

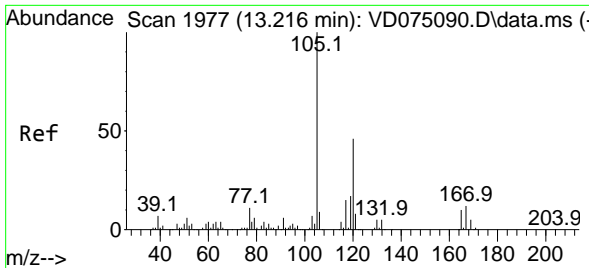
Tgt Ion: 91 Resp: 35452
 Ion Ratio Lower Upper
 91 100
 126 0.0 17.6 52.8#



#83
 tert-Butylbenzene
 Concen: 18.254 ug/l
 RT: 13.216 min Scan# 1977
 Delta R.T. 0.047 min
 Lab File: VD075108.D
 Acq: 10 Jan 2023 16:39

Tgt Ion: 119 Resp: 74729
 Ion Ratio Lower Upper
 119 100
 91 89.2 32.6 97.8
 134 0.0 13.7 41.1#

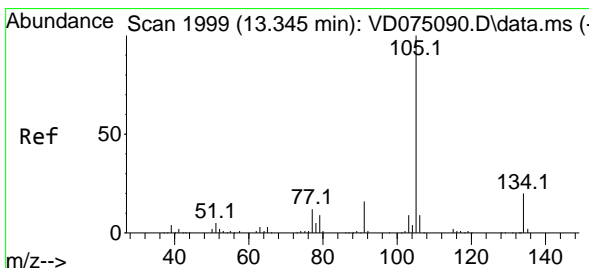
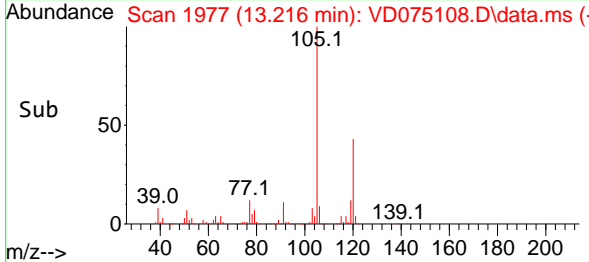
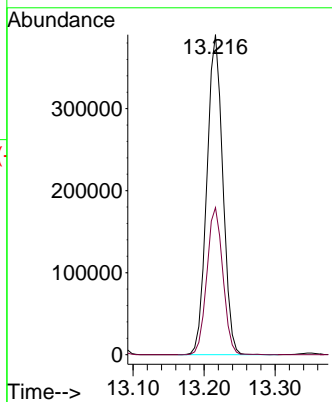
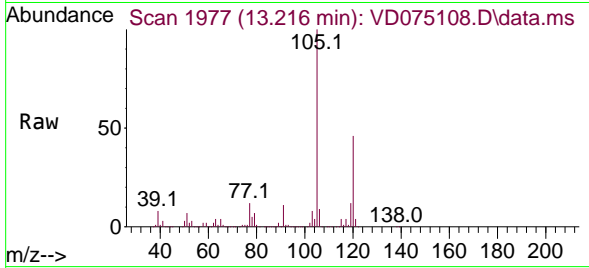




#84
 1,2,4-Trimethylbenzene
 Concen: 135.543 ug/l
 RT: 13.216 min Scan# 1977
 Delta R.T. 0.000 min
 Lab File: VD075108.D
 Acq: 10 Jan 2023 16:39

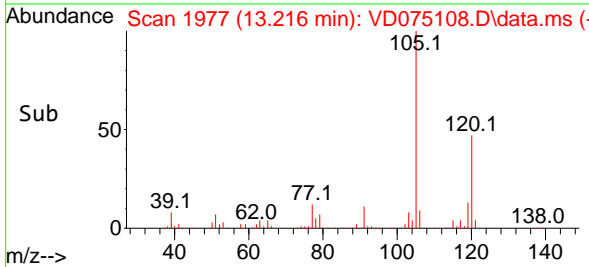
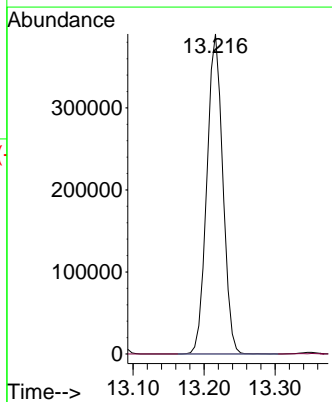
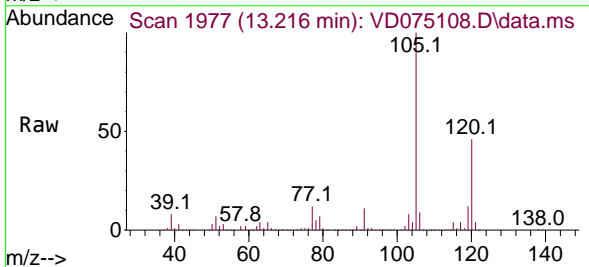
Instrument : MSVOA_D
 ClientSampleId : B-3-(15-17)

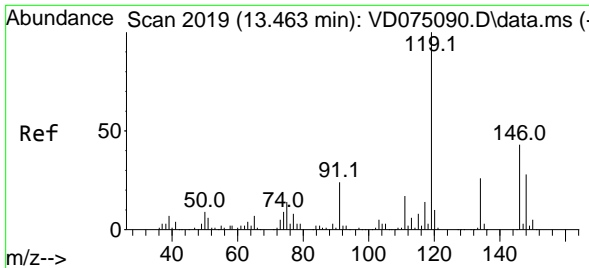
Tgt Ion:105 Resp: 607606
 Ion Ratio Lower Upper
 105 100
 120 46.2 22.8 68.4



#85
 sec-Butylbenzene
 Concen: 97.955 ug/l
 RT: 13.216 min Scan# 1977
 Delta R.T. -0.129 min
 Lab File: VD075108.D
 Acq: 10 Jan 2023 16:39

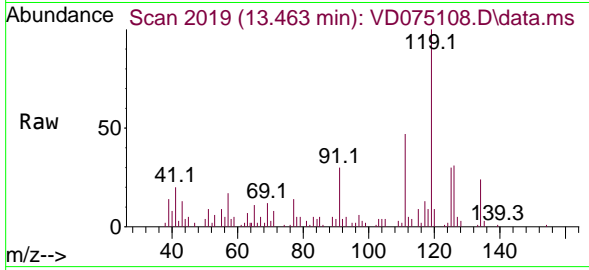
Tgt Ion:105 Resp: 607606
 Ion Ratio Lower Upper
 105 100
 134 0.0 10.1 30.3#



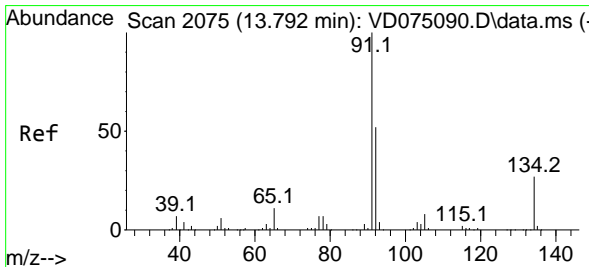
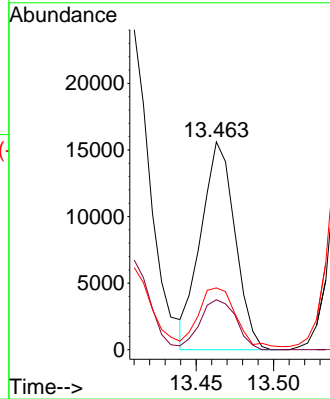
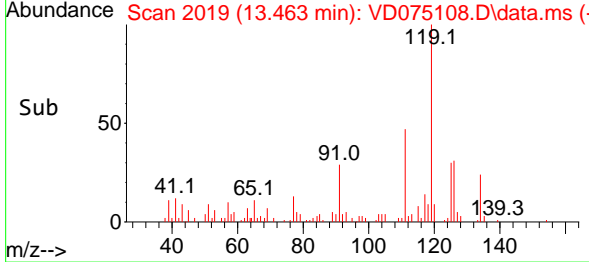


#86
 p-Isopropyltoluene
 Concen: 4.772 ug/l
 RT: 13.463 min Scan# 2019
 Delta R.T. 0.000 min
 Lab File: VD075108.D
 Acq: 10 Jan 2023 16:39

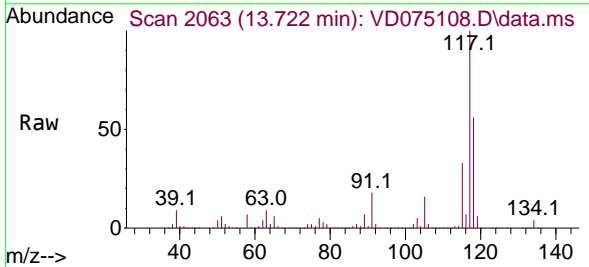
Instrument : MSVOA_D
 ClientSampleId : B-3-(15-17)



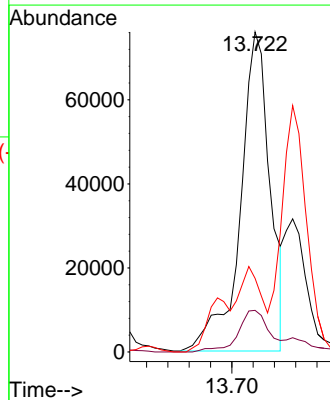
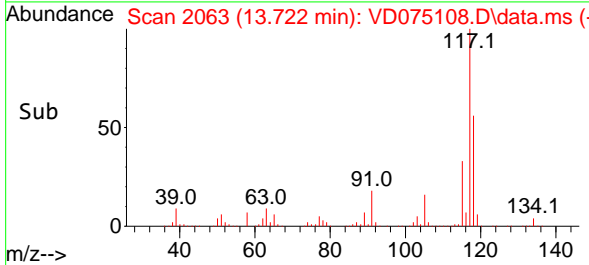
Tgt Ion:119 Resp: 23909
 Ion Ratio Lower Upper
 119 100
 134 25.2 13.1 39.1
 91 30.1 11.9 35.5

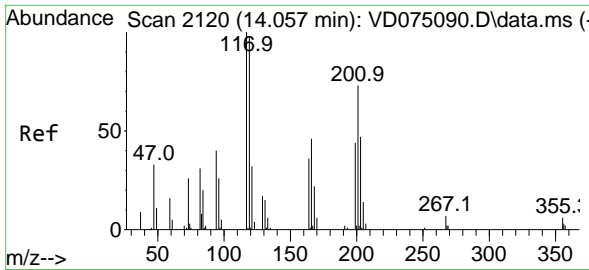


#89
 n-Butylbenzene
 Concen: 29.910 ug/l
 RT: 13.722 min Scan# 2063
 Delta R.T. -0.070 min
 Lab File: VD075108.D
 Acq: 10 Jan 2023 16:39



Tgt Ion: 91 Resp: 147387
 Ion Ratio Lower Upper
 91 100
 92 13.3 26.2 78.5#
 134 20.6 13.2 39.6

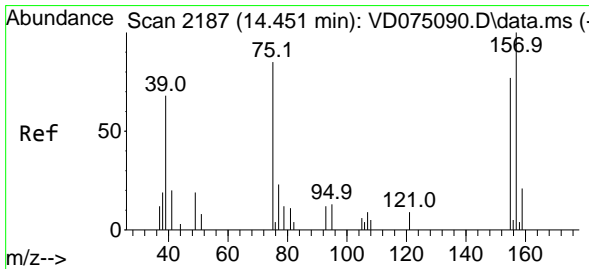
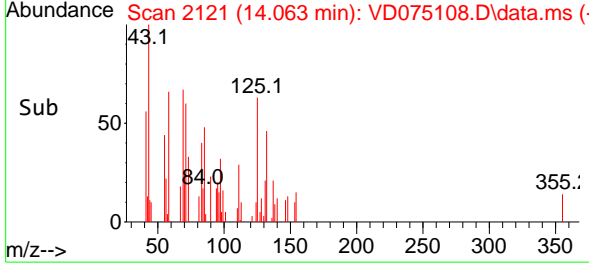
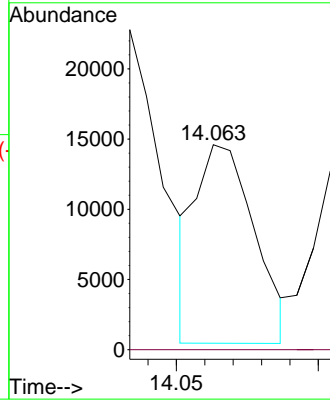
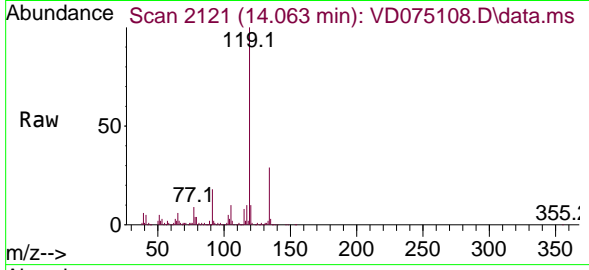




#90
 Hexachloroethane
 Concen: 23.143 ug/l
 RT: 14.063 min Scan# 2120
 Delta R.T. 0.006 min
 Lab File: VD075108.D
 Acq: 10 Jan 2023 16:39

Instrument : MSVOA_D
 ClientSampleId : B-3-(15-17)

Tgt Ion:117 Resp: 20212
 Ion Ratio Lower Upper
 117 100
 201 0.0 35.5 106.7#



#92
 1,2-Dibromo-3-Chloropropane
 Concen: 234.271 ug/l
 RT: 14.457 min Scan# 2188
 Delta R.T. 0.006 min
 Lab File: VD075108.D
 Acq: 10 Jan 2023 16:39

Tgt Ion: 75 Resp: 36917
 Ion Ratio Lower Upper
 75 100
 155 0.0 45.4 136.2#
 157 0.0 60.1 180.2#

