

Data Path : Z:\voasrv\HPCHEM1\MSVOA_D\Data\VD011222\
 Data File : VD071695.D
 Acq On : 12 Jan 2022 19:22
 Operator : VA/SY
 Sample : N1106-08
 Misc : 5.64G/5.00ml/MSVOA_D/SOIL
 ALS Vial : 1 Sample Multiplier: 1

Instrument :
 MSVOA_D
 ClientSampleId :
 SO-0022C-02-6

Quant Time: Jan 13 05:30:33 2022
 Quant Method : Z:\voasrv\HPCHEM1\MSVOA_D\Method\82D010722S.M
 Quant Title : SW846 8260
 QLast Update : Fri Jan 07 15:39:14 2022
 Response via : Initial Calibration

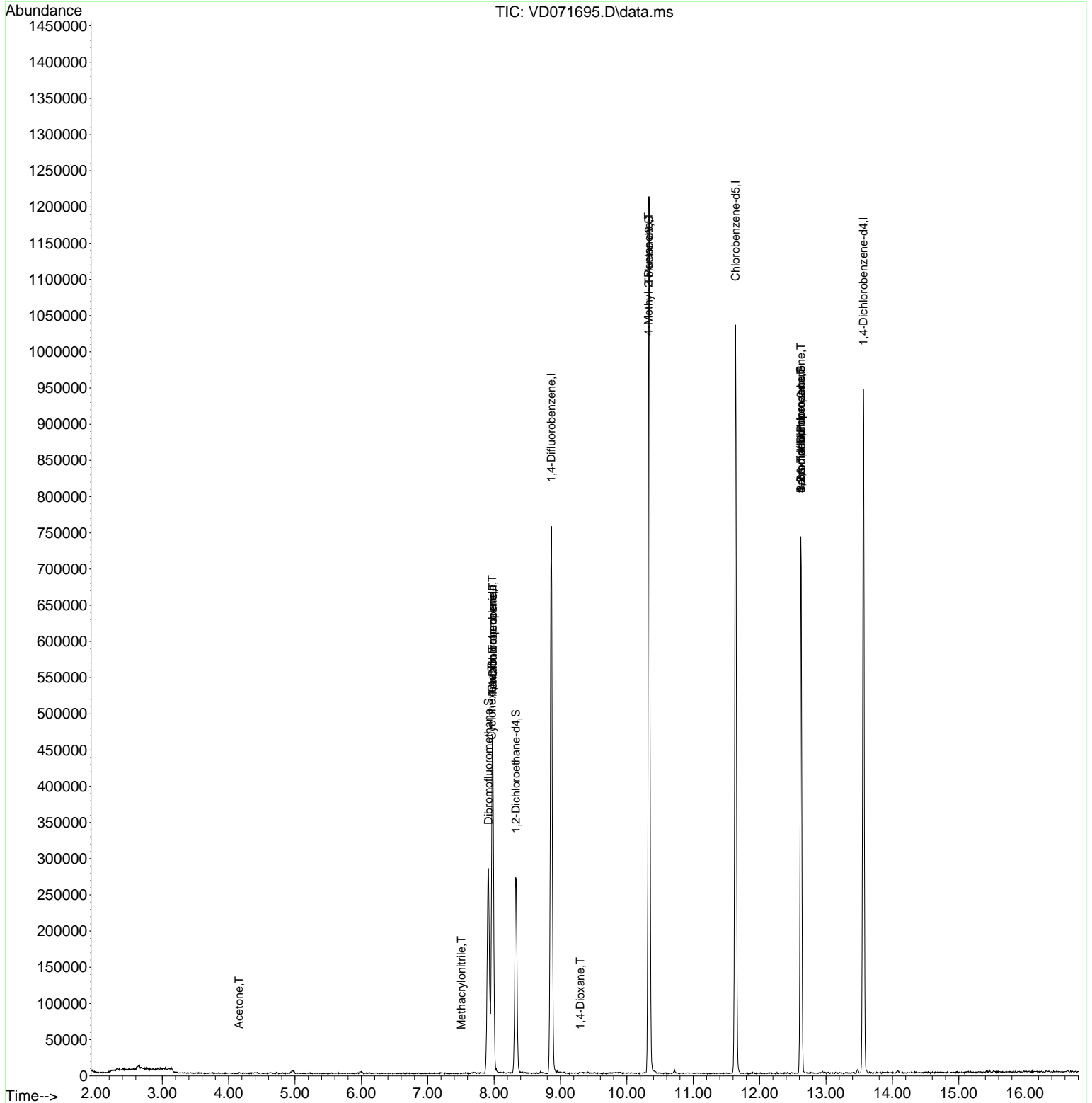
Compound	R.T.	QIon	Response	Conc	Units	Dev(Min)
Internal Standards						
1) Pentafluorobenzene	7.979	168	318147	50.000	ug/l	0.00
34) 1,4-Difluorobenzene	8.861	114	590413	50.000	ug/l	0.00
63) Chlorobenzene-d5	11.638	117	534135	50.000	ug/l	0.00
72) 1,4-Dichlorobenzene-d4	13.561	152	220370	50.000	ug/l	0.00
System Monitoring Compounds						
33) 1,2-Dichloroethane-d4	8.326	65	223087	54.496	ug/l	0.00
Spiked Amount	50.000	Range 50 - 163	Recovery	=	109.000%	
35) Dibromofluoromethane	7.914	113	198275	50.815	ug/l	0.00
Spiked Amount	50.000	Range 54 - 147	Recovery	=	101.640%	
50) Toluene-d8	10.332	98	765001	52.376	ug/l	0.00
Spiked Amount	50.000	Range 49 - 140	Recovery	=	104.760%	
62) 4-Bromofluorobenzene	12.620	95	227407	44.184	ug/l	0.00
Spiked Amount	50.000	Range 25 - 144	Recovery	=	88.360%	
Target Compounds						
2) Dichlorodifluoromethane	1.985	85	111	Below Cal	#	43
3) Chloromethane	2.209	50	320	Below Cal	#	43
5) Bromomethane	2.779	94	299	Below Cal	#	29
11) Tert butyl alcohol	5.226	59	54	Below Cal	#	75
16) Acetone	4.156	43	1728	1.828	ug/l #	49
18) Methyl Acetate	4.726	43	181	Below Cal	#	56
20) Methylene Chloride	4.956	84	1973	Below Cal	#	62
31) Cyclohexane	7.967	56	10455	2.154	ug/l #	47
36) 1,1-Dichloropropene	7.979	75	31306	5.625	ug/l #	45
38) Carbon Tetrachloride	7.973	117	34438	6.110	ug/l #	19
41) Methacrylonitrile	7.509	41	54	1.164	ug/l #	25
49) 1,4-Dioxane	9.297	88	60	2.820	ug/l #	65
51) 4-Methyl-2-Pentanone	10.326	43	4110	1.600	ug/l #	1
71) Bromoform	12.620	173	2596	1.372	ug/l #	1
76) 1,2,3-Trichloropropane	12.620	75	133653	62.766	ug/l #	100
81) trans-1,4-Dichloro-2-b...	12.620	75	133653	174.984	ug/l #	3

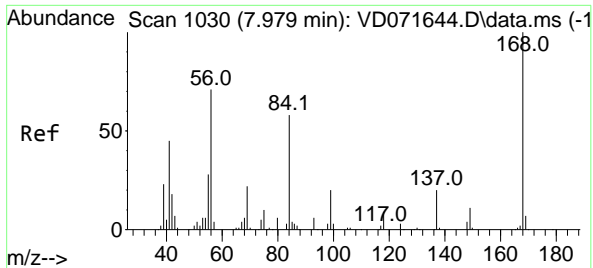
(#) = qualifier out of range (m) = manual integration (+) = signals summed

Data Path : Z:\voasrv\HPCHEM1\MSVOA_D\Data\VD011222\
 Data File : VD071695.D
 Acq On : 12 Jan 2022 19:22
 Operator : VA/SY
 Sample : N1106-08
 Misc : 5.64G/5.00ml/MSVOA_D/SOIL
 ALS Vial : 1 Sample Multiplier: 1

Instrument :
 MSVOA_D
 ClientSampleId :
 SO-0022C-02-6

Quant Time: Jan 13 05:30:33 2022
 Quant Method : Z:\voasrv\HPCHEM1\MSVOA_D\Method\82D010722S.M
 Quant Title : SW846 8260
 QLast Update : Fri Jan 07 15:39:14 2022
 Response via : Initial Calibration

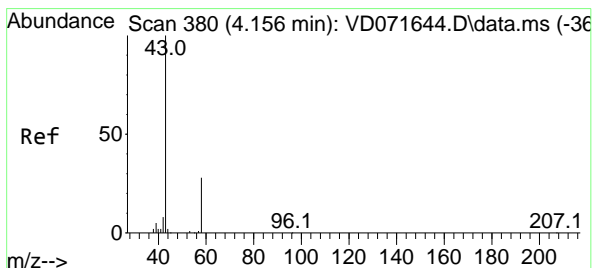
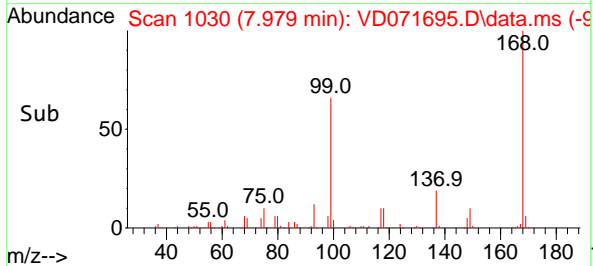
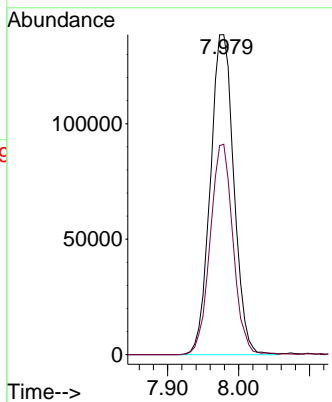
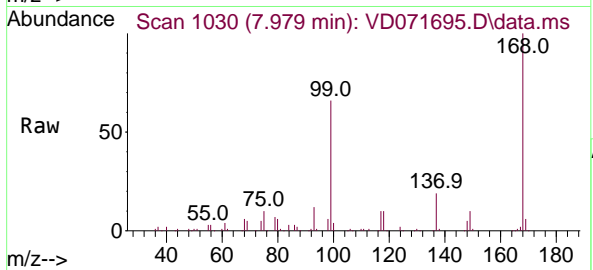




#1
 Pentafluorobenzene
 Concen: 50.000 ug/l
 RT: 7.979 min Scan# 1030
 Delta R.T. 0.000 min
 Lab File: VD071695.D
 Acq: 12 Jan 2022 19:22

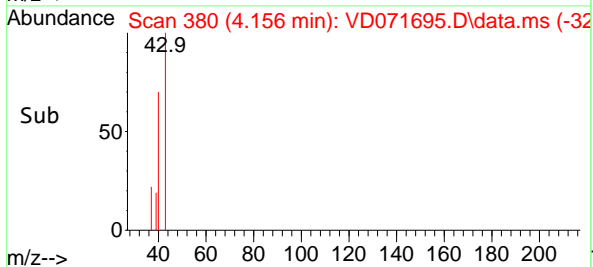
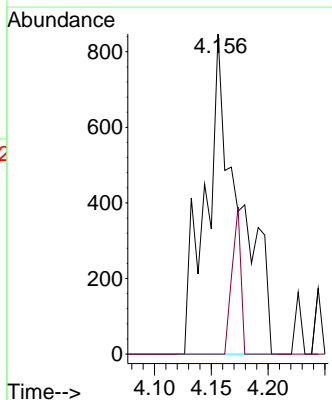
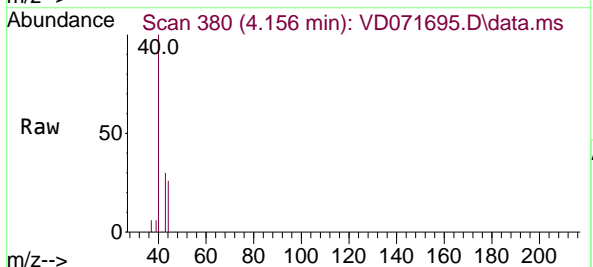
Instrument : MSVOA_D
 ClientSampleId : SO-0022C-02-6

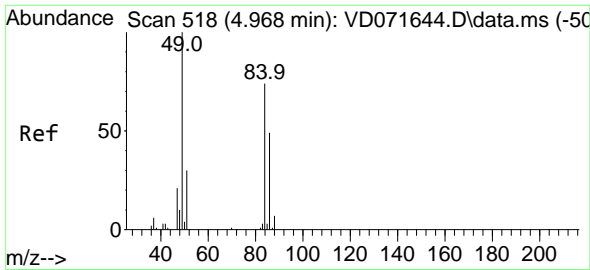
Tgt Ion: 168 Resp: 318147
 Ion Ratio Lower Upper
 168 100
 99 65.8 51.8 77.6



#16
 Acetone
 Concen: 1.828 ug/l
 RT: 4.156 min Scan# 380
 Delta R.T. 0.001 min
 Lab File: VD071695.D
 Acq: 12 Jan 2022 19:22

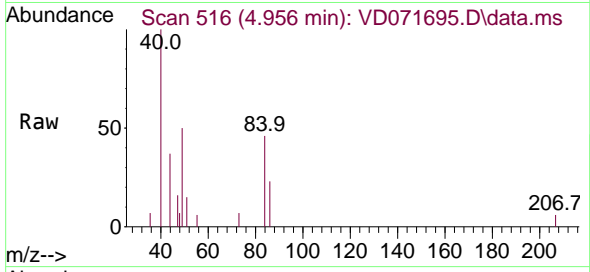
Tgt Ion: 43 Resp: 1728
 Ion Ratio Lower Upper
 43 100
 58 0.0 21.0 31.6#





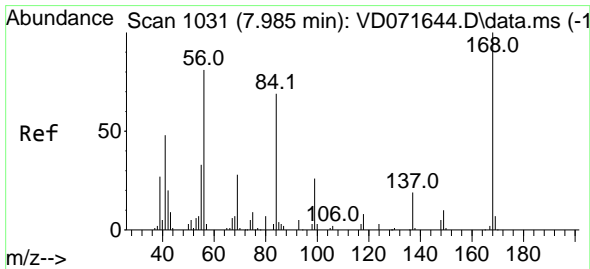
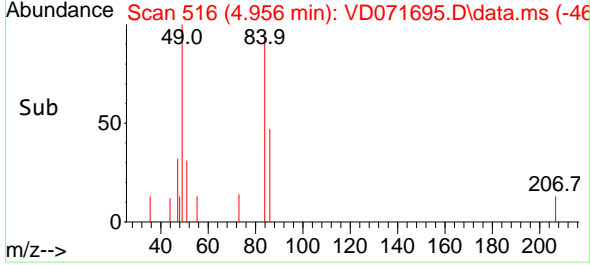
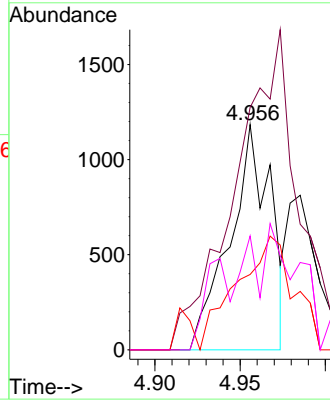
#20
 Methylene Chloride
 Concen: Below Cal
 RT: 4.956 min Scan# 518
 Delta R.T. -0.011 min
 Lab File: VD071695.D
 Acq: 12 Jan 2022 19:22

Instrument : MSVOA_D
 ClientSampleId : SO-0022C-02-6



Tgt Ion: 84 Resp: 1973

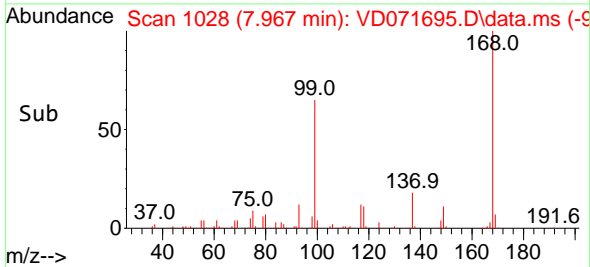
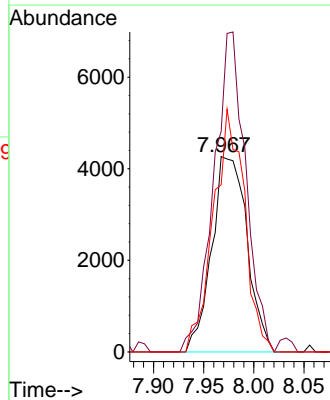
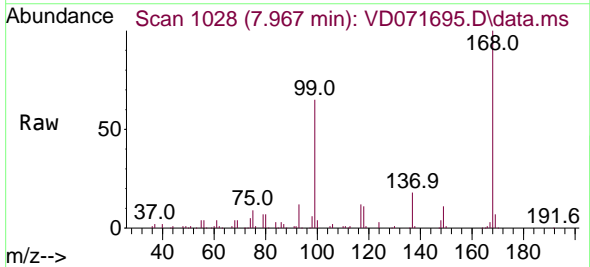
Ion	Ratio	Lower	Upper
84	100		
49	91.3	118.6	178.0#
51	14.9	37.8	56.6#
86	50.6	47.9	71.9

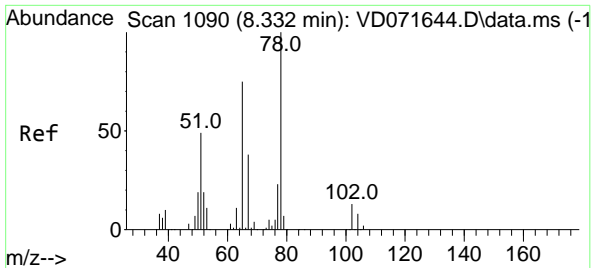


#31
 Cyclohexane
 Concen: 2.154 ug/l
 RT: 7.967 min Scan# 1028
 Delta R.T. -0.023 min
 Lab File: VD071695.D
 Acq: 12 Jan 2022 19:22

Tgt Ion: 56 Resp: 10455

Ion	Ratio	Lower	Upper
56	100		
69	112.9	21.7	32.5#
84	96.9	65.7	98.5





#33
 1,2-Dichloroethane-d4
 Concen: 54.496 ug/l
 RT: 8.326 min Scan# 1090
 Delta R.T. -0.006 min
 Lab File: VD071695.D
 Acq: 12 Jan 2022 19:22

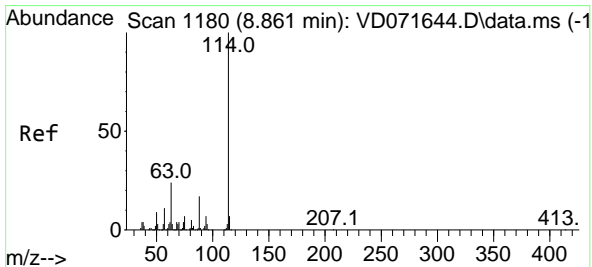
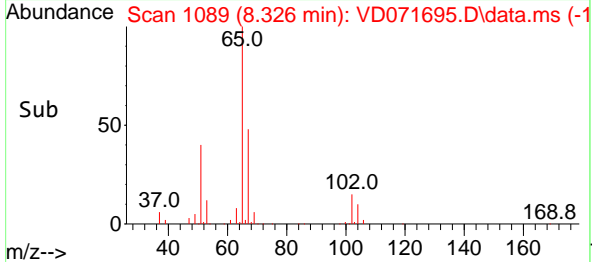
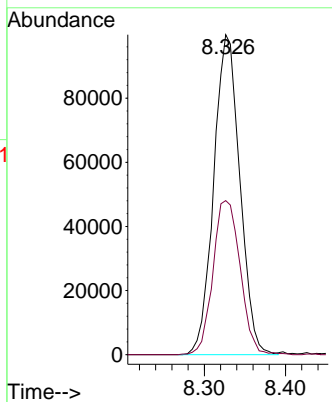
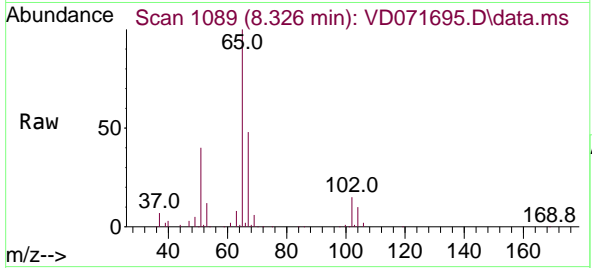
Instrument :

MSVOA_D

ClientSampleId :

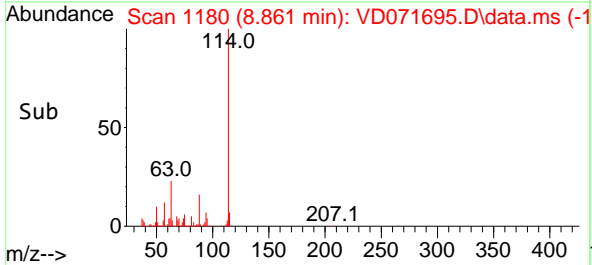
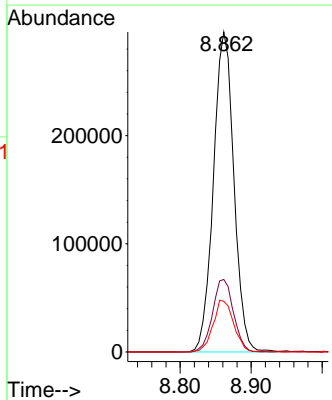
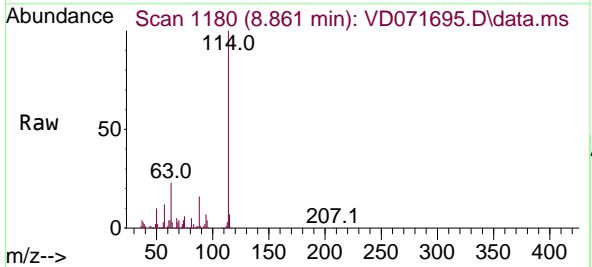
SO-0022C-02-6

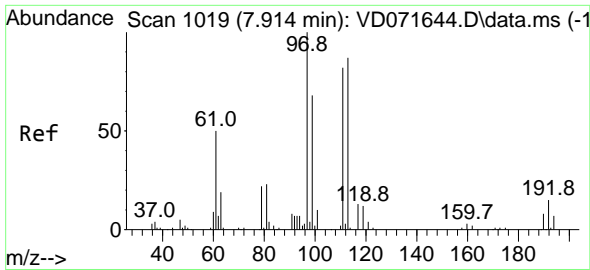
Tgt Ion: 65 Resp: 223087
 Ion Ratio Lower Upper
 65 100
 67 50.2 0.0 101.2



#34
 1,4-Difluorobenzene
 Concen: 50.000 ug/l
 RT: 8.861 min Scan# 1180
 Delta R.T. -0.006 min
 Lab File: VD071695.D
 Acq: 12 Jan 2022 19:22

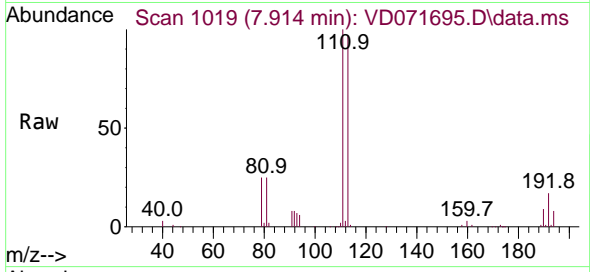
Tgt Ion:114 Resp: 590413
 Ion Ratio Lower Upper
 114 100
 63 22.7 0.0 46.2
 88 15.9 0.0 32.0





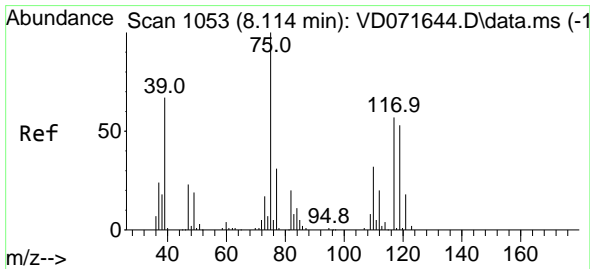
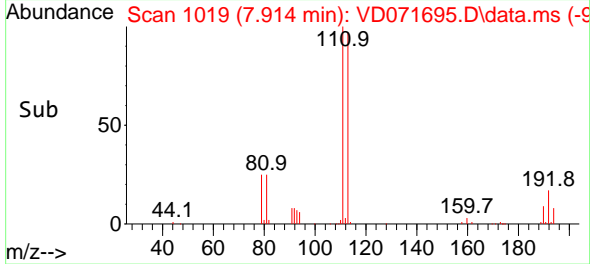
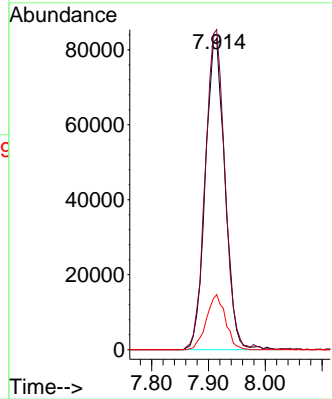
#35
 Dibromofluoromethane
 Concen: 50.815 ug/l
 RT: 7.914 min Scan# 1019
 Delta R.T. 0.000 min
 Lab File: VD071695.D
 Acq: 12 Jan 2022 19:22

Instrument : MSVOA_D
 ClientSampleId : SO-0022C-02-6



Tgt Ion: 113 Resp: 198275

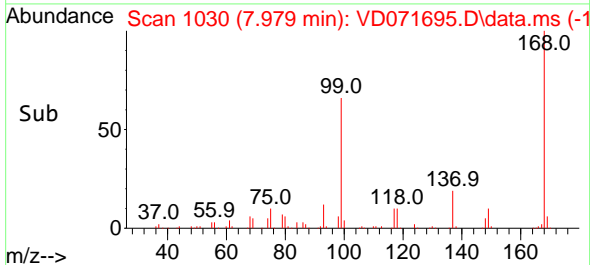
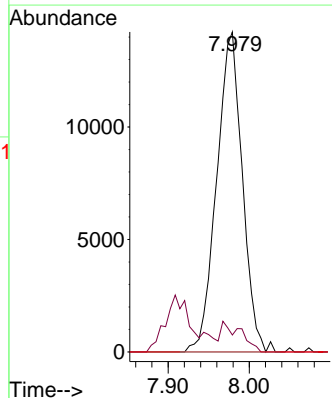
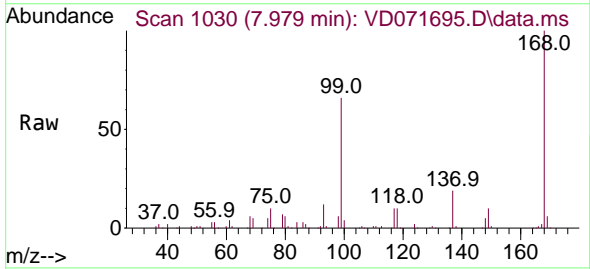
Ion	Ratio	Lower	Upper
113	100		
111	102.9	82.2	123.4
192	17.2	14.2	21.2

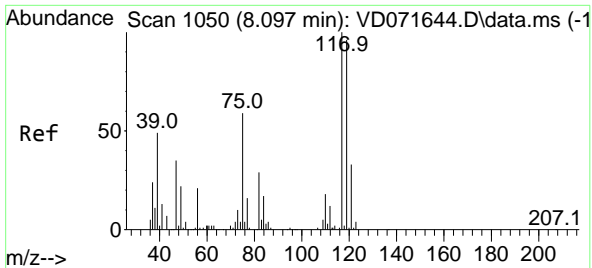


#36
 1,1-Dichloropropene
 Concen: 5.625 ug/l
 RT: 7.979 min Scan# 1030
 Delta R.T. -0.135 min
 Lab File: VD071695.D
 Acq: 12 Jan 2022 19:22

Tgt Ion: 75 Resp: 31306

Ion	Ratio	Lower	Upper
75	100		
110	2.0	16.0	48.0#
77	0.0	24.5	36.7#

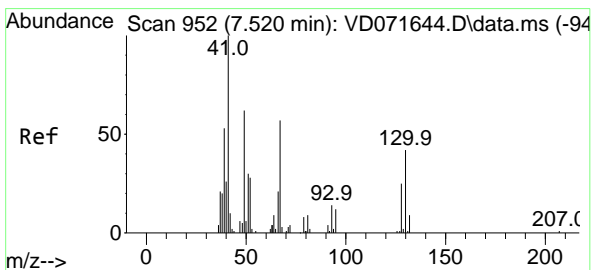
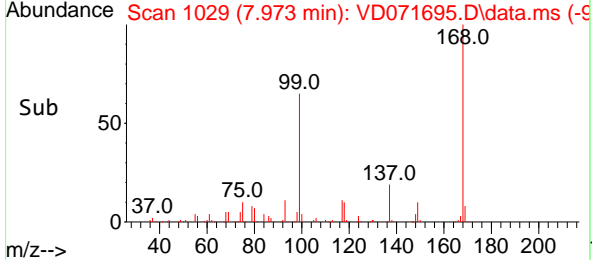
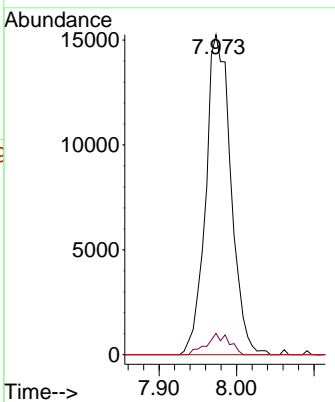
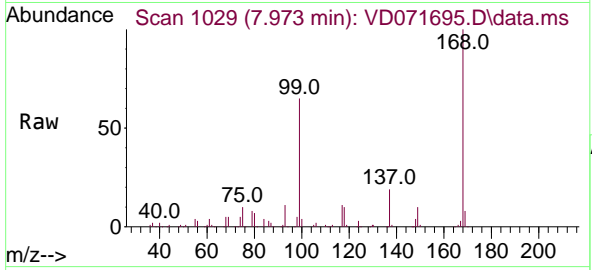




#38
 Carbon Tetrachloride
 Concen: 6.110 ug/l
 RT: 7.973 min Scan# 1029
 Delta R.T. -0.123 min
 Lab File: VD071695.D
 Acq: 12 Jan 2022 19:22

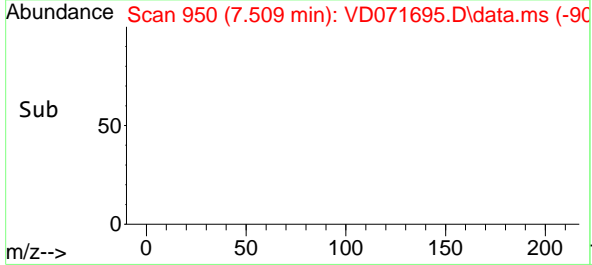
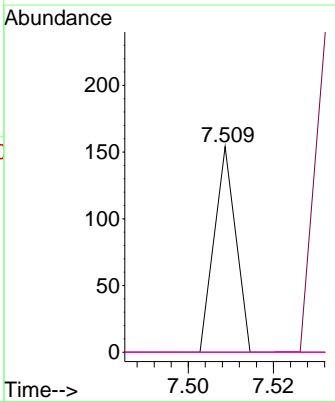
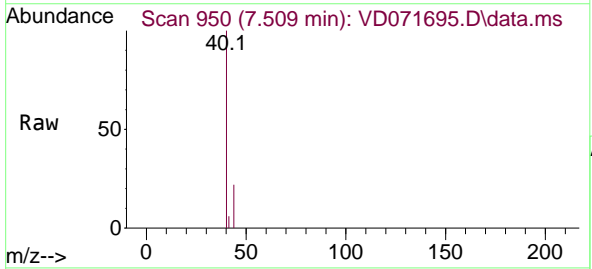
Instrument : MSVOA_D
 ClientSampleId : SO-0022C-02-6

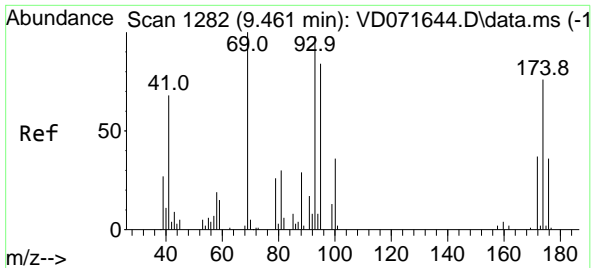
Tgt Ion	Resp	Lower	Upper
117	100		
119	6.7	73.4	110.2#
121	0.0	23.9	35.9#



#41
 Methacrylonitrile
 Concen: 1.164 ug/l
 RT: 7.509 min Scan# 950
 Delta R.T. -0.011 min
 Lab File: VD071695.D
 Acq: 12 Jan 2022 19:22

Tgt Ion	Resp	Lower	Upper
41	100		
39	0.0	46.9	70.3#
67	0.0	49.3	73.9#
52	0.0	23.1	34.7#

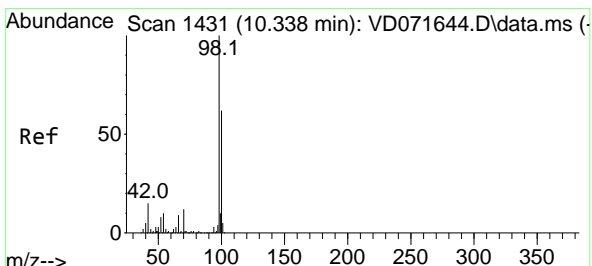
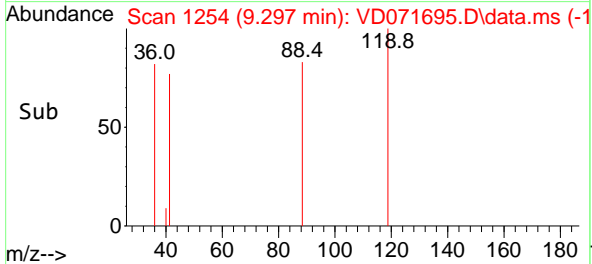
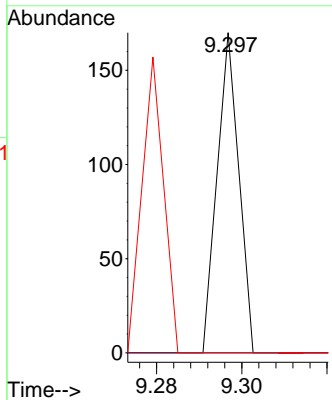
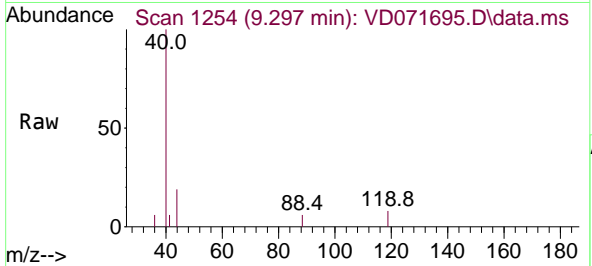




#49
 1,4-Dioxane
 Concen: 2.820 ug/l
 RT: 9.297 min Scan# 11
 Delta R.T. -0.158 min
 Lab File: VD071695.D
 Acq: 12 Jan 2022 19:22

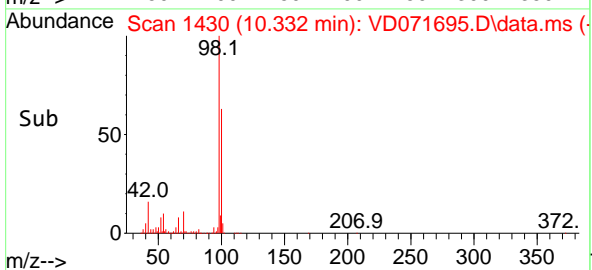
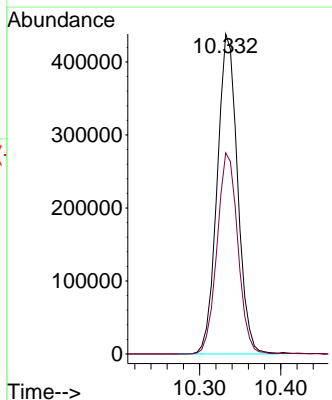
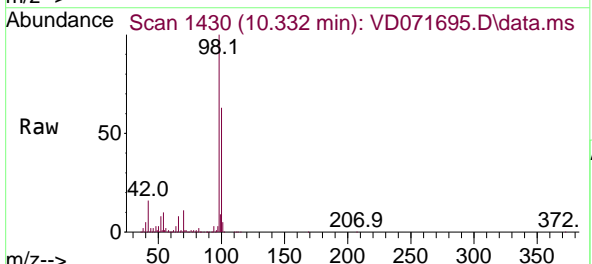
Instrument : MSVOA_D
 ClientSampleId : SO-0022C-02-6

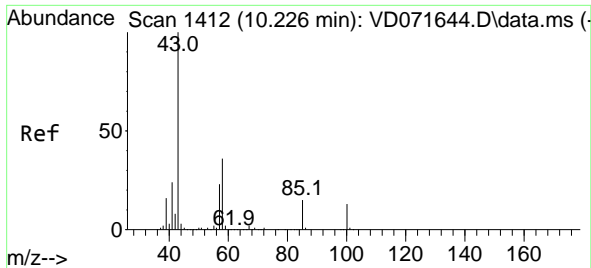
Tgt Ion	Resp	Lower	Upper
88	60		
43	0.0	34.6	52.0#
58	91.7	62.0	93.0



#50
 Toluene-d8
 Concen: 52.376 ug/l
 RT: 10.332 min Scan# 1430
 Delta R.T. -0.005 min
 Lab File: VD071695.D
 Acq: 12 Jan 2022 19:22

Tgt Ion	Resp	Lower	Upper
98	765001		
100	100	64.1	78.1
100	64.1	52.1	78.1

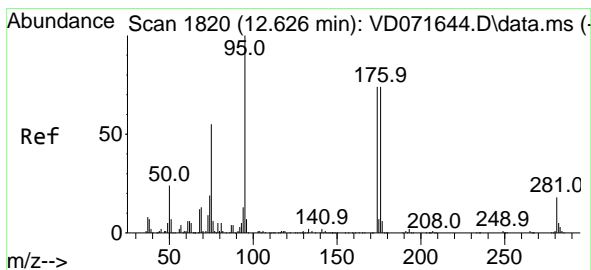
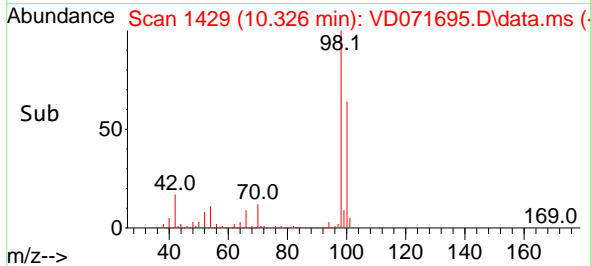
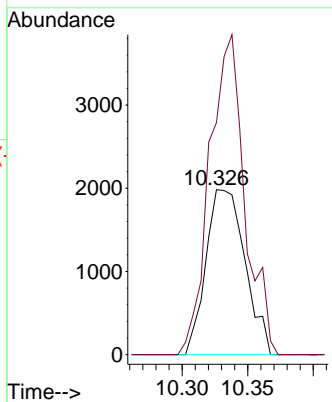
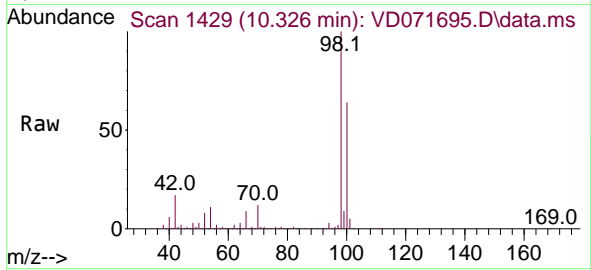




#51
 4-Methyl-2-Pentanone
 Concen: 1.600 ug/l
 RT: 10.326 min Scan# 1412
 Delta R.T. 0.100 min
 Lab File: VD071695.D
 Acq: 12 Jan 2022 19:22

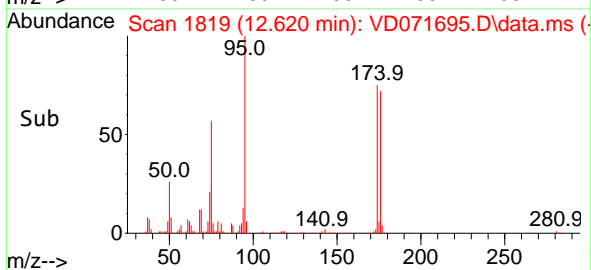
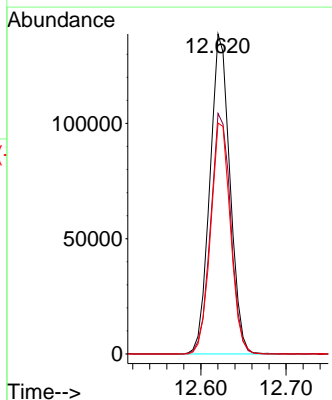
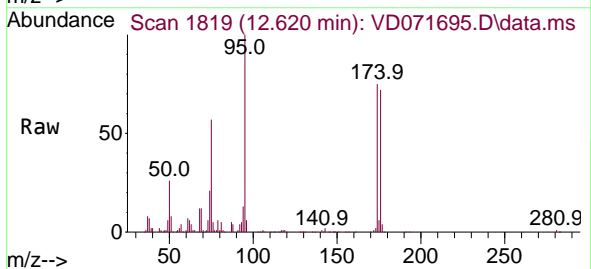
Instrument : MSVOA_D
 ClientSampleId : SO-0022C-02-6

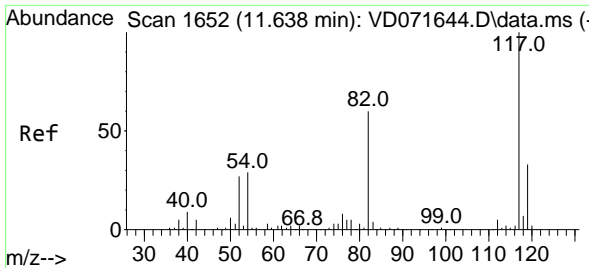
Tgt Ion: 43 Resp: 4110
 Ion Ratio Lower Upper
 43 100
 58 174.8 28.2 42.2#



#62
 4-Bromofluorobenzene
 Concen: 44.184 ug/l
 RT: 12.620 min Scan# 1819
 Delta R.T. -0.006 min
 Lab File: VD071695.D
 Acq: 12 Jan 2022 19:22

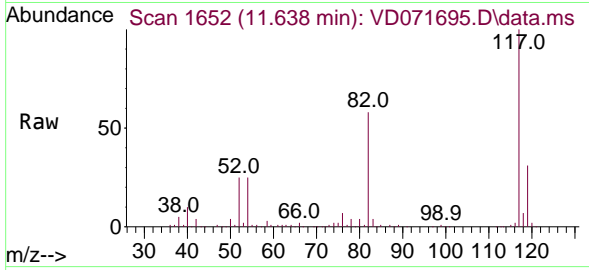
Tgt Ion: 95 Resp: 227407
 Ion Ratio Lower Upper
 95 100
 174 75.4 0.0 150.0
 176 71.3 0.0 146.4



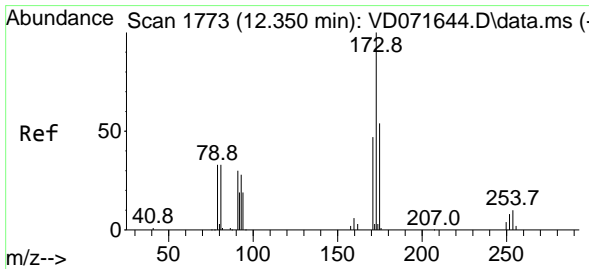
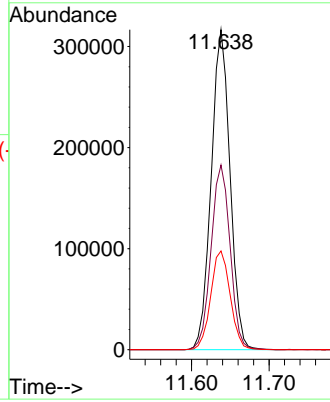
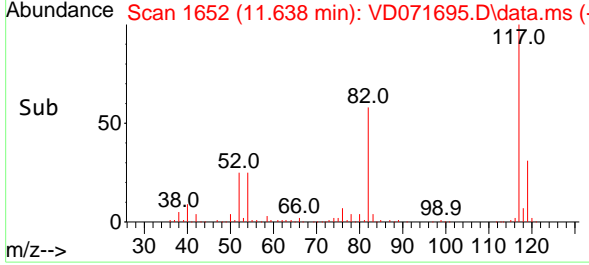


#63
 Chlorobenzene-d5
 Concen: 50.000 ug/l
 RT: 11.638 min Scan# 1119
 Delta R.T. 0.001 min
 Lab File: VD071695.D
 Acq: 12 Jan 2022 19:22

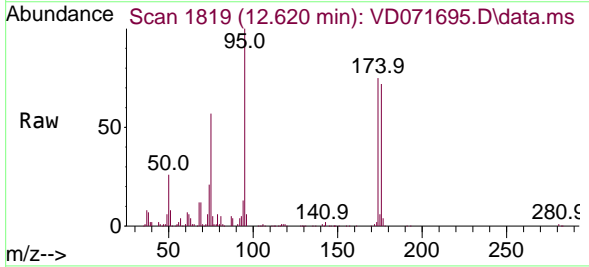
Instrument : MSVOA_D
 ClientSampleId : SO-0022C-02-6



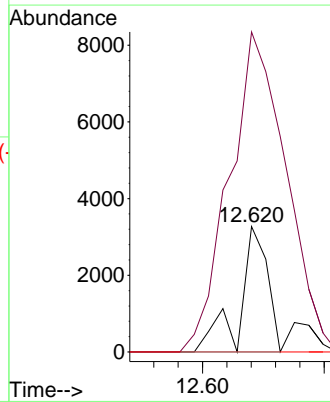
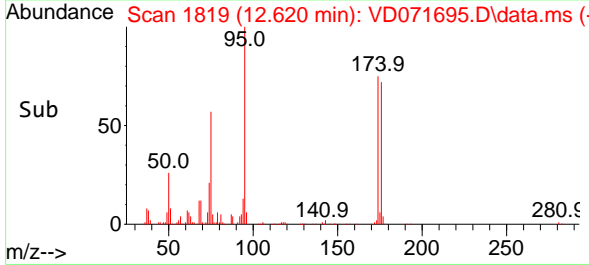
Tgt Ion:117 Resp: 534135
 Ion Ratio Lower Upper
 117 100
 82 57.7 46.9 70.3
 119 30.9 26.6 39.8

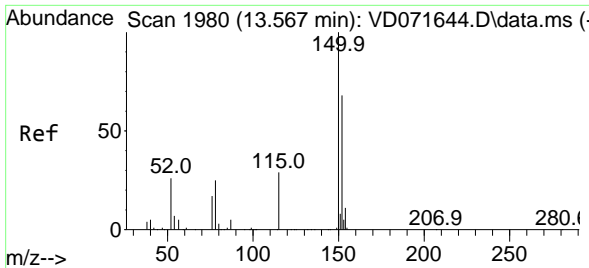


#71
 Bromoform
 Concen: 1.372 ug/l
 RT: 12.620 min Scan# 1819
 Delta R.T. 0.265 min
 Lab File: VD071695.D
 Acq: 12 Jan 2022 19:22



Tgt Ion:173 Resp: 2596
 Ion Ratio Lower Upper
 173 100
 175 440.6 24.4 73.2#
 254 0.0 0.1 0.1#



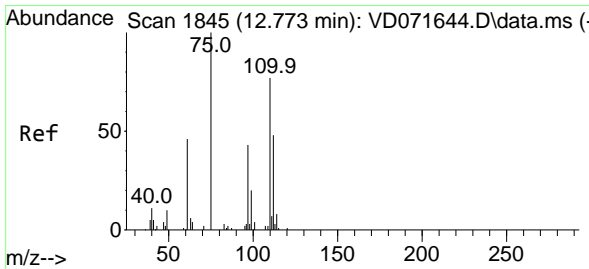
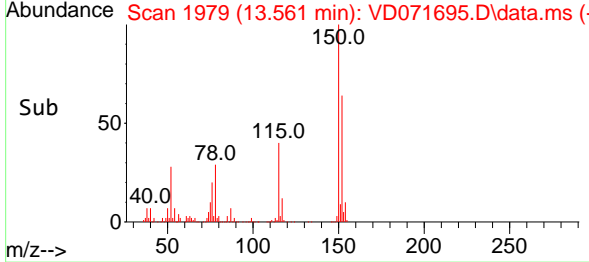
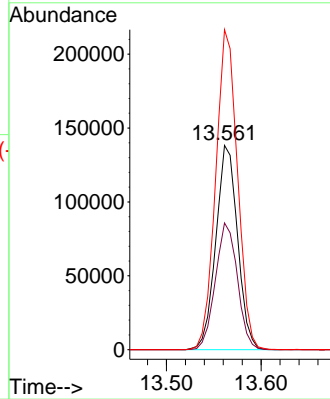
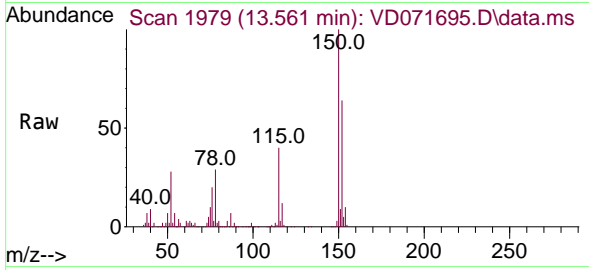


#72
 1,4-Dichlorobenzene-d4
 Concen: 50.000 ug/l
 RT: 13.561 min Scan# 1819
 Delta R.T. -0.006 min
 Lab File: VD071695.D
 Acq: 12 Jan 2022 19:22

Instrument : MSVOA_D
 ClientSampleId : SO-0022C-02-6

Tgt Ion:152 Resp: 220370

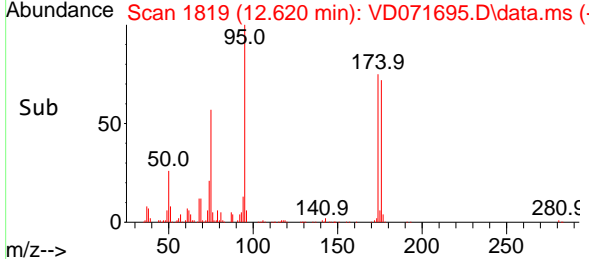
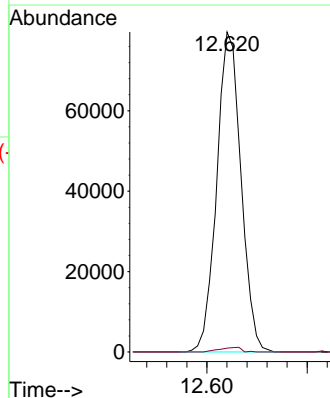
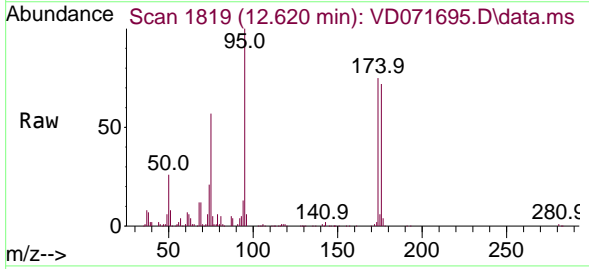
Ion	Ratio	Lower	Upper
152	100		
115	62.8	31.5	94.5
150	157.0	0.0	348.0

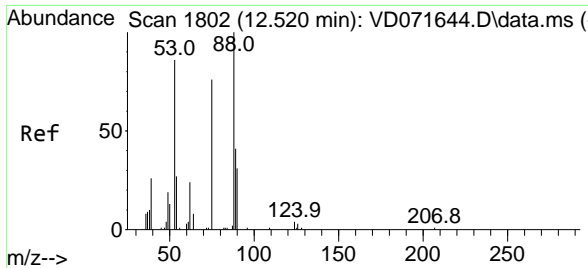


#76
 1,2,3-Trichloropropane
 Concen: 62.766 ug/l
 RT: 12.620 min Scan# 1819
 Delta R.T. -0.153 min
 Lab File: VD071695.D
 Acq: 12 Jan 2022 19:22

Tgt Ion: 75 Resp: 133653

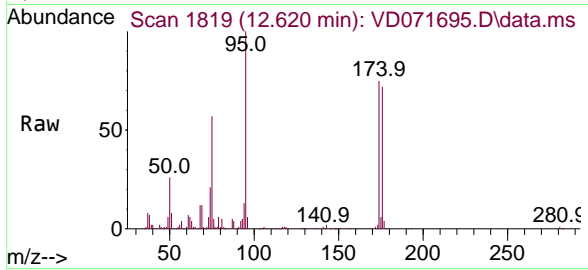
Ion	Ratio	Lower	Upper
75	100		
77	1.3	0.0	0.0#





#81
 trans-1,4-Dichloro-2-butene
 Concen: 174.984 ug/l
 RT: 12.620 min Scan# 11
 Delta R.T. 0.100 min
 Lab File: VD071695.D
 Acq: 12 Jan 2022 19:22

Instrument : MSVOA_D
 ClientSampleId : SO-0022C-02-6



Tgt Ion: 75 Resp: 133653

Ion	Ratio	Lower	Upper
75	100		
53	0.0	95.4	143.0#
89	0.1	37.2	55.8#

