

Data Path : Z:\voasrv\HPCHEM1\MSVOA_D\Data\VD011222\
 Data File : VD071698.D
 Acq On : 12 Jan 2022 20:47
 Operator : VA/SY
 Sample : N1118-01
 Misc : 5.10G/5.00ml/MSVOA_D/SOIL
 ALS Vial : 1 Sample Multiplier: 1

Instrument :
 MSVOA_D
 ClientSampleId :
 MR-SOILPILE

Quant Time: Jan 13 05:31:18 2022
 Quant Method : Z:\voasrv\HPCHEM1\MSVOA_D\Method\82D010722S.M
 Quant Title : SW846 8260
 QLast Update : Fri Jan 07 15:39:14 2022
 Response via : Initial Calibration

Compound	R.T.	QIon	Response	Conc	Units	Dev(Min)

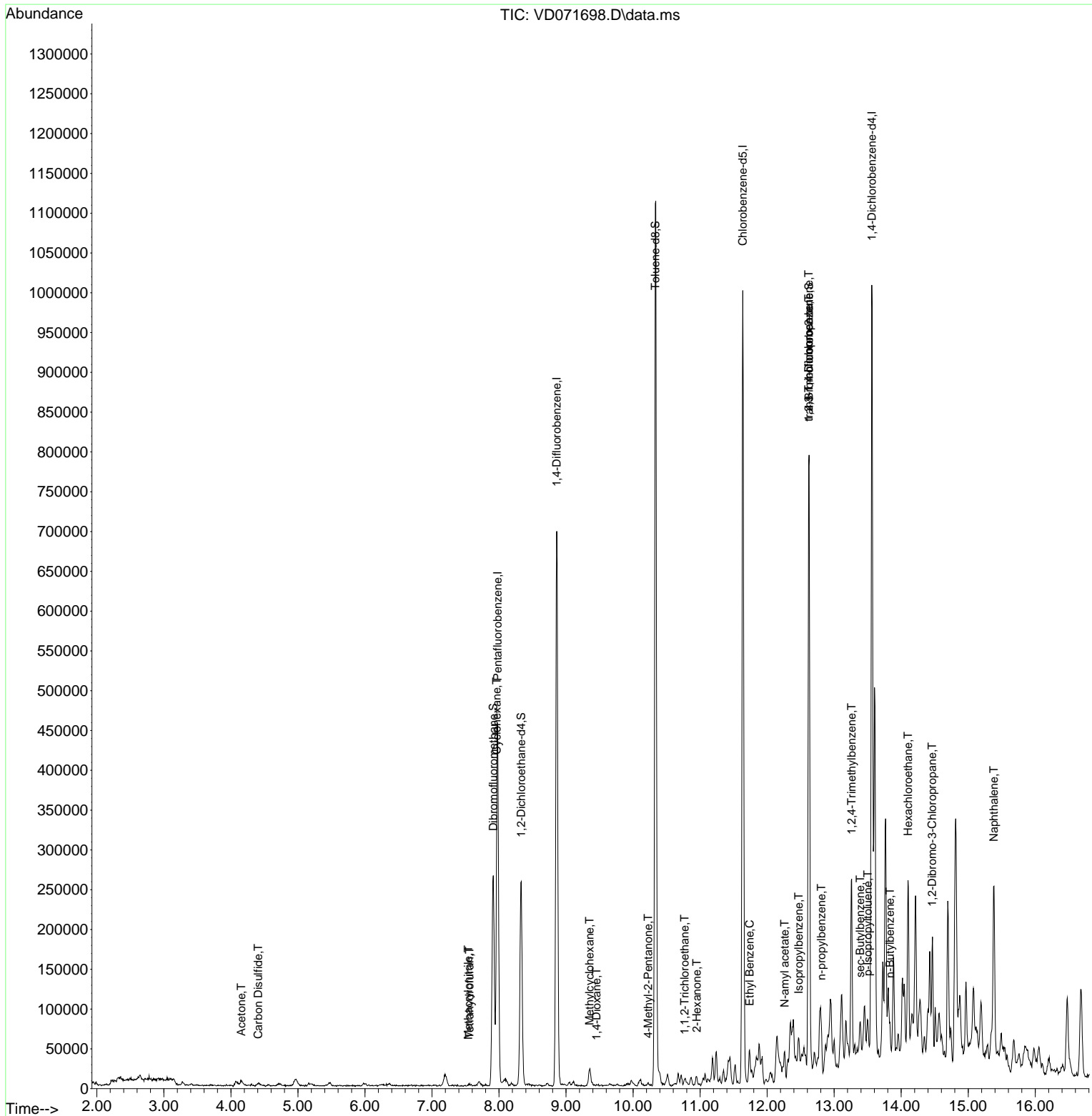
Internal Standards						
1) Pentafluorobenzene	7.979	168	306841	50.000	ug/l	0.00
34) 1,4-Difluorobenzene	8.861	114	559644	50.000	ug/l	0.00
63) Chlorobenzene-d5	11.637	117	511581	50.000	ug/l	0.00
72) 1,4-Dichlorobenzene-d4	13.561	152	230406	50.000	ug/l	0.00
System Monitoring Compounds						
33) 1,2-Dichloroethane-d4	8.332	65	206211	52.230	ug/l	0.00
Spiked Amount	50.000	Range	50 - 163	Recovery	=	104.460%
35) Dibromofluoromethane	7.914	113	181686	49.124	ug/l	0.00
Spiked Amount	50.000	Range	54 - 147	Recovery	=	98.240%
50) Toluene-d8	10.332	98	713735	51.552	ug/l	0.00
Spiked Amount	50.000	Range	49 - 140	Recovery	=	103.100%
62) 4-Bromofluorobenzene	12.626	95	234812	48.131	ug/l	0.00
Spiked Amount	50.000	Range	25 - 144	Recovery	=	96.260%
Target Compounds						
						Qvalue
3) Chloromethane	2.214	50	2444	Below Cal	#	83
11) Tert butyl alcohol	5.202	59	4005	Below Cal	#	75
16) Acetone	4.155	43	11131	12.211	ug/l	100
17) Carbon Disulfide	4.408	76	4947	1.186	ug/l #	73
18) Methyl Acetate	4.708	43	146	Below Cal	#	56
20) Methylene Chloride	4.955	84	2788	Below Cal	#	60
29) Tetrahydrofuran	7.561	42	766	1.236	ug/l #	46
31) Cyclohexane	7.967	56	12331	2.563	ug/l #	62
39) Methylcyclohexane	9.349	83	7170	1.258	ug/l #	84
41) Methacrylonitrile	7.543	41	225	1.276	ug/l #	43
49) 1,4-Dioxane	9.455	88	63	3.124	ug/l #	18
51) 4-Methyl-2-Pentanone	10.226	43	2568	1.055	ug/l	93
55) 1,1,2-Trichloroethane	10.767	97	3092	1.173	ug/l #	25
59) 2-Hexanone	10.949	43	4896	2.879	ug/l #	29
67) Ethyl Benzene	11.737	91	19559	1.088	ug/l	95
73) Isopropylbenzene	12.473	105	21482	1.297	ug/l	96
74) N-amyl acetate	12.261	43	7877	1.939	ug/l #	60
76) 1,2,3-Trichloropropane	12.620	75	136008	61.090	ug/l #	100
78) n-propylbenzene	12.808	91	33030	1.586	ug/l	98
81) trans-1,4-Dichloro-2-b...	12.620	75	136008	170.311	ug/l #	3
84) 1,2,4-Trimethylbenzene	13.261	105	122192	8.931	ug/l	99
85) sec-Butylbenzene	13.390	105	26184	1.446	ug/l	84
86) p-Isopropyltoluene	13.502	119	16054	1.080	ug/l	94
89) n-Butylbenzene	13.831	91	27031	1.816	ug/l #	79
90) Hexachloroethane	14.102	117	14410	4.899	ug/l #	23
92) 1,2-Dibromo-3-Chloropr...	14.461	75	1729	3.666	ug/l #	9
95) Naphthalene	15.384	128	183707	28.461	ug/l	99

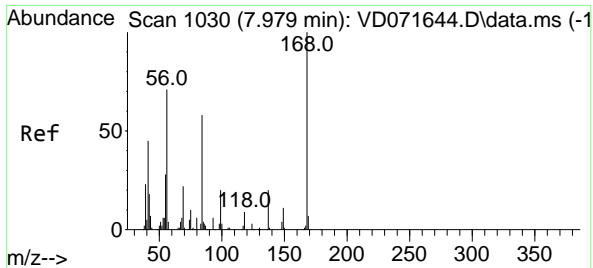
(#) = qualifier out of range (m) = manual integration (+) = signals summed

Data Path : Z:\voasrv\HPCHEM1\MSVOA_D\Data\VD011222\
 Data File : VD071698.D
 Acq On : 12 Jan 2022 20:47
 Operator : VA/SY
 Sample : N1118-01
 Misc : 5.10G/5.00ml/MSVOA_D/SOIL
 ALS Vial : 1 Sample Multiplier: 1

Instrument :
 MSVOA_D
 ClientSampleId :
 MR-SOILPILE

Quant Time: Jan 13 05:31:18 2022
 Quant Method : Z:\voasrv\HPCHEM1\MSVOA_D\Method\82D010722S.M
 Quant Title : SW846 8260
 QLast Update : Fri Jan 07 15:39:14 2022
 Response via : Initial Calibration

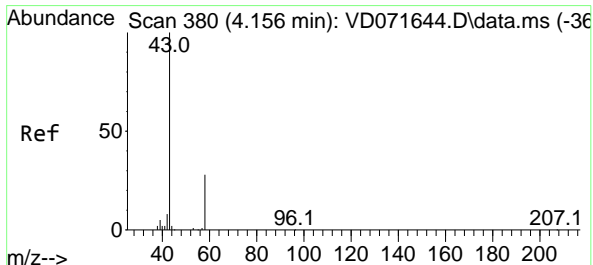
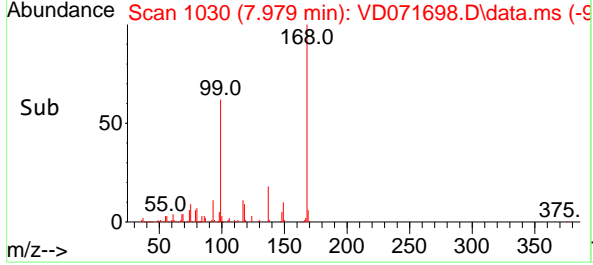
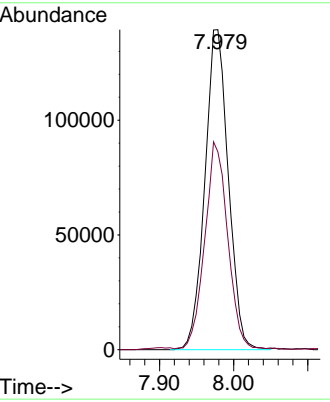
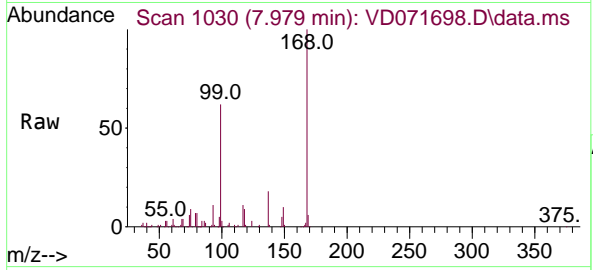




#1
 Pentafluorobenzene
 Concen: 50.000 ug/l
 RT: 7.979 min Scan# 1030
 Delta R.T. -0.000 min
 Lab File: VD071698.D
 Acq: 12 Jan 2022 20:47

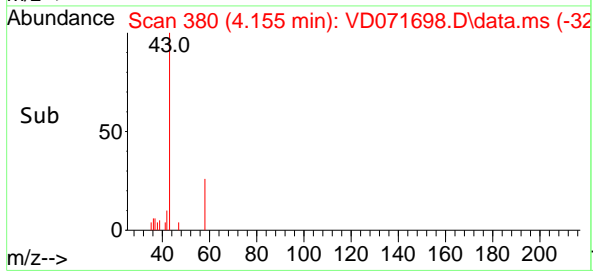
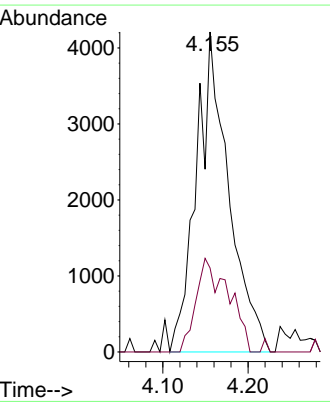
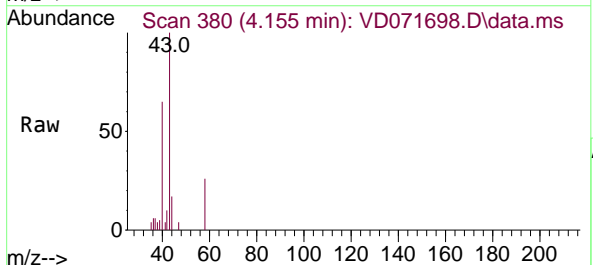
Instrument : MSVOA_D
 ClientSampleId : MR-SOILPILE

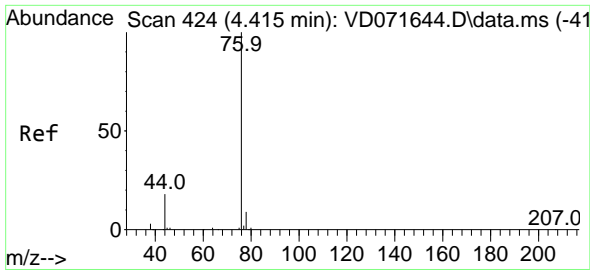
Tgt Ion:168 Resp: 306841
 Ion Ratio Lower Upper
 168 100
 99 61.2 51.8 77.6



#16
 Acetone
 Concen: 12.211 ug/l
 RT: 4.155 min Scan# 380
 Delta R.T. 0.000 min
 Lab File: VD071698.D
 Acq: 12 Jan 2022 20:47

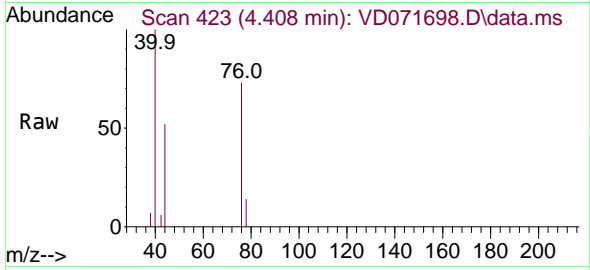
Tgt Ion: 43 Resp: 11131
 Ion Ratio Lower Upper
 43 100
 58 26.3 21.0 31.6



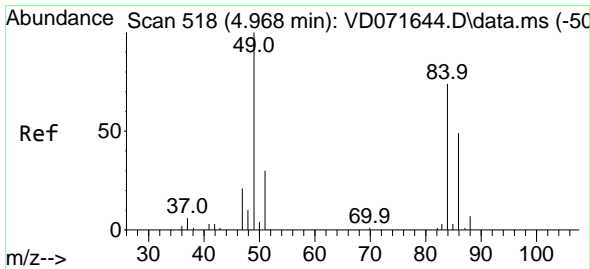
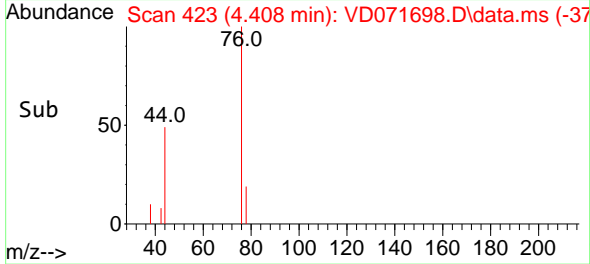
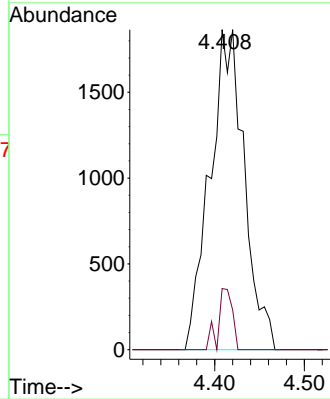


#17
 Carbon Disulfide
 Concen: 1.186 ug/l
 RT: 4.408 min Scan# 417
 Delta R.T. -0.006 min
 Lab File: VD071698.D
 Acq: 12 Jan 2022 20:47

Instrument : MSVOA_D
 ClientSampleId : MR-SOILPILE

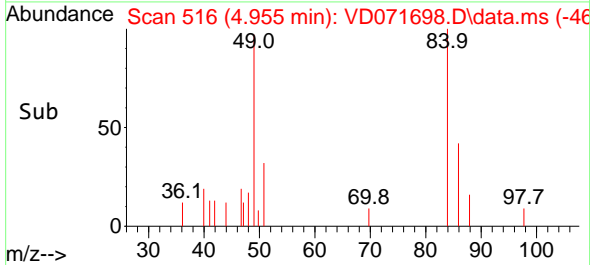
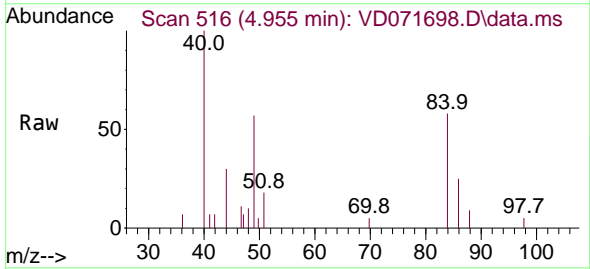
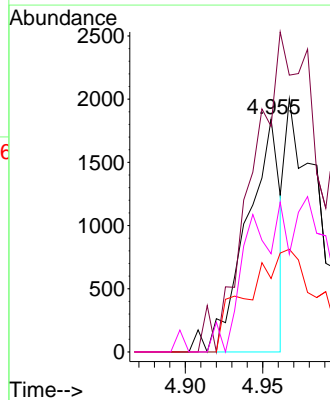


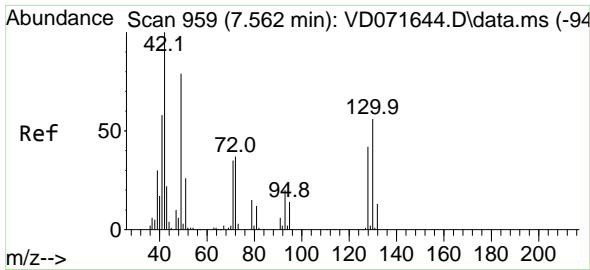
Tgt Ion: 76 Resp: 4947
 Ion Ratio Lower Upper
 76 100
 78 19.1 7.4 11.2#



#20
 Methylene Chloride
 Concen: Below Cal
 RT: 4.955 min Scan# 516
 Delta R.T. -0.012 min
 Lab File: VD071698.D
 Acq: 12 Jan 2022 20:47

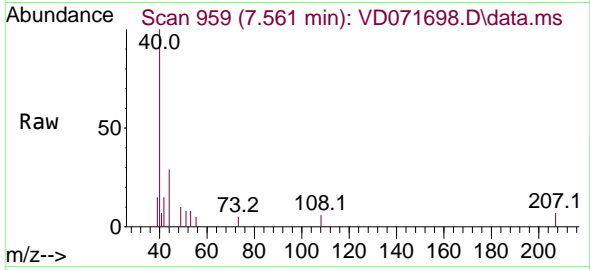
Tgt Ion: 84 Resp: 2788
 Ion Ratio Lower Upper
 84 100
 49 96.9 118.6 178.0#
 51 19.7 37.8 56.6#
 86 32.8 47.9 71.9#





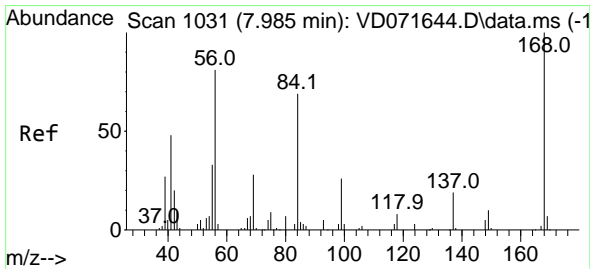
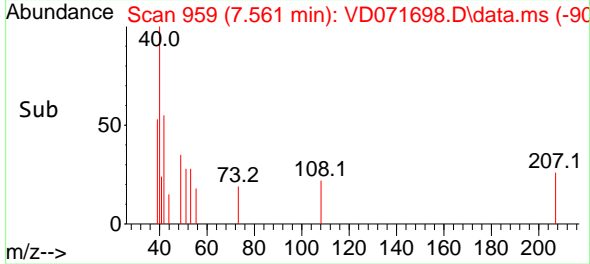
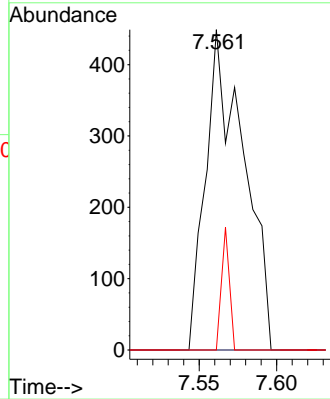
#29
 Tetrahydrofuran
 Concen: 1.236 ug/l
 RT: 7.561 min Scan# 91
 Delta R.T. 0.000 min
 Lab File: VD071698.D
 Acq: 12 Jan 2022 20:47

Instrument :
 MSVOA_D
 ClientSampleId :
 MR-SOILPILE



Tgt Ion: 42 Resp: 766

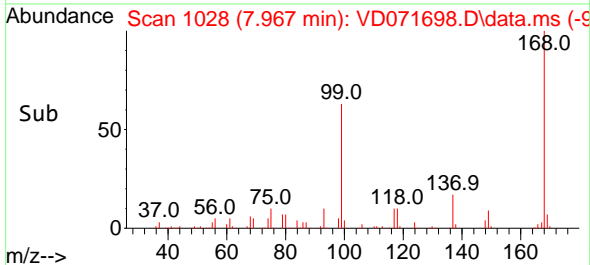
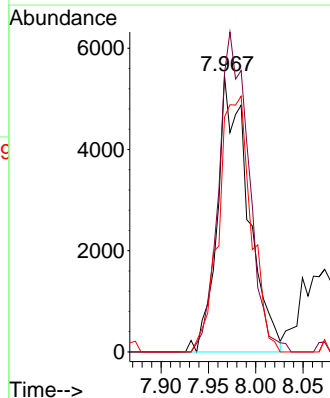
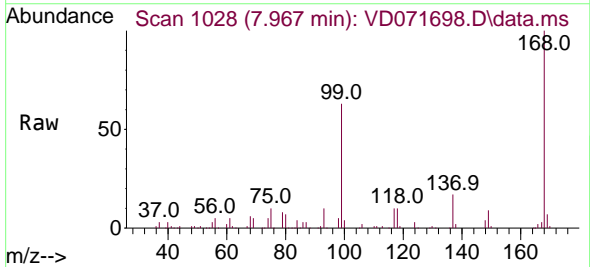
Ion	Ratio	Lower	Upper
42	100		
72	0.0	29.6	44.4#
71	8.0	27.3	40.9#

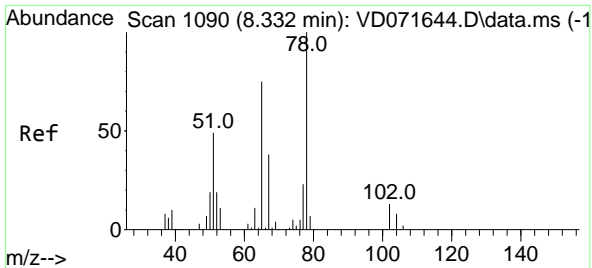


#31
 Cyclohexane
 Concen: 2.563 ug/l
 RT: 7.967 min Scan# 1028
 Delta R.T. -0.023 min
 Lab File: VD071698.D
 Acq: 12 Jan 2022 20:47

Tgt Ion: 56 Resp: 12331

Ion	Ratio	Lower	Upper
56	100		
69	100.9	21.7	32.5#
84	85.0	65.7	98.5

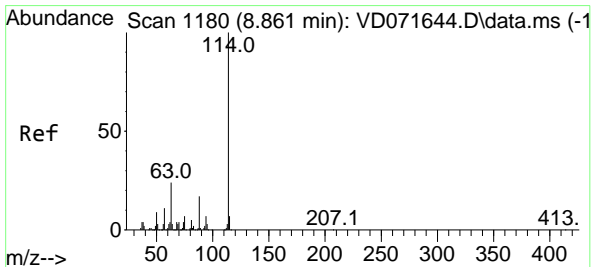
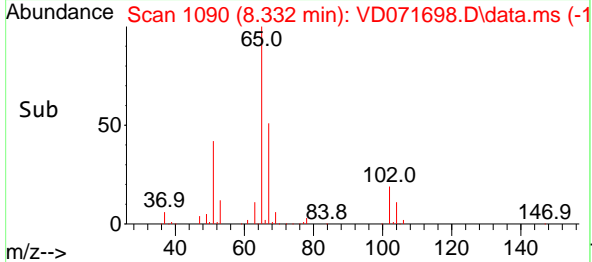
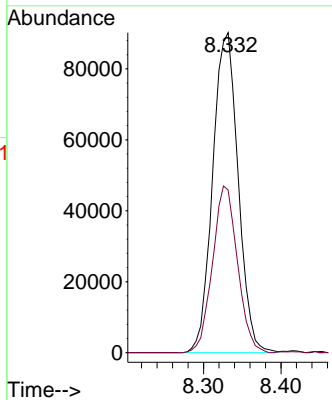
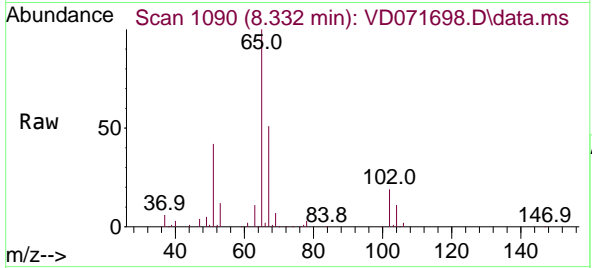




#33
 1,2-Dichloroethane-d4
 Concen: 52.230 ug/l
 RT: 8.332 min Scan# 1090
 Delta R.T. -0.000 min
 Lab File: VD071698.D
 Acq: 12 Jan 2022 20:47

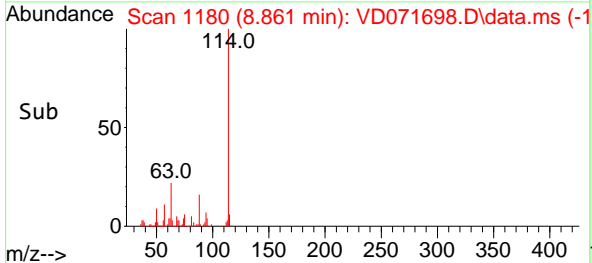
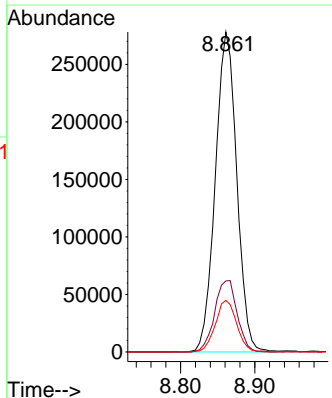
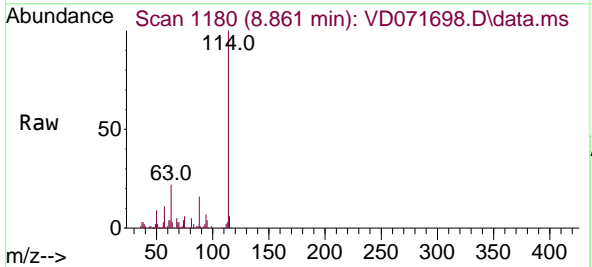
Instrument : MSVOA_D
 ClientSampleId : MR-SOILPILE

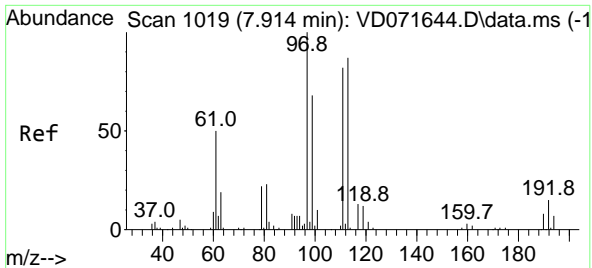
Tgt Ion: 65 Resp: 206211
 Ion Ratio Lower Upper
 65 100
 67 51.1 0.0 101.2



#34
 1,4-Difluorobenzene
 Concen: 50.000 ug/l
 RT: 8.861 min Scan# 1180
 Delta R.T. -0.006 min
 Lab File: VD071698.D
 Acq: 12 Jan 2022 20:47

Tgt Ion: 114 Resp: 559644
 Ion Ratio Lower Upper
 114 100
 63 22.2 0.0 46.2
 88 16.1 0.0 32.0



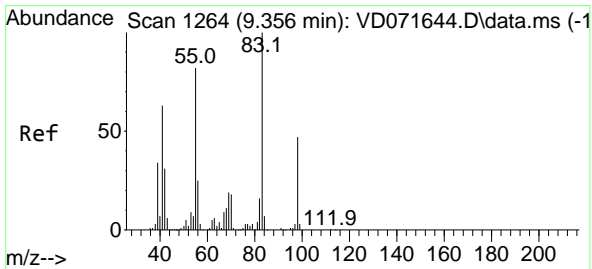
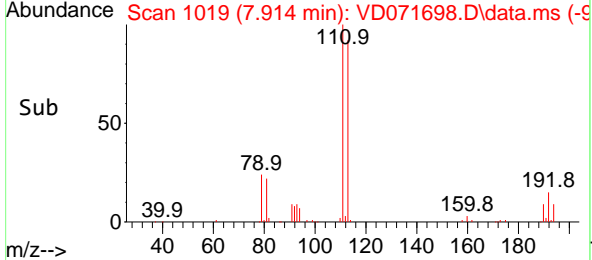
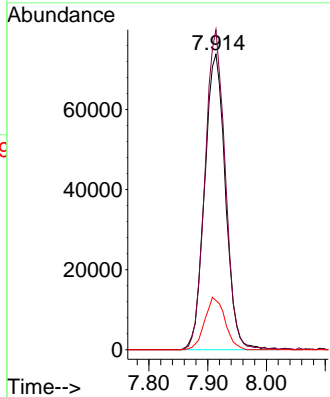
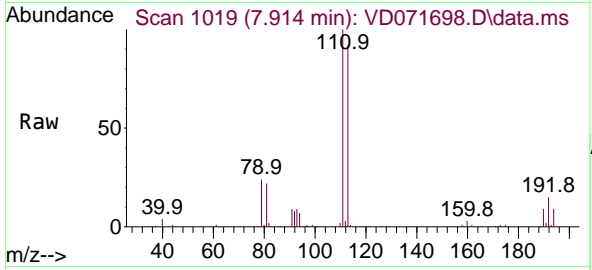


#35
 Dibromofluoromethane
 Concen: 49.124 ug/l
 RT: 7.914 min Scan# 1019
 Delta R.T. -0.000 min
 Lab File: VD071698.D
 Acq: 12 Jan 2022 20:47

Instrument : MSVOA_D
 ClientSampleId : MR-SOILPILE

Tgt Ion: 113 Resp: 181686

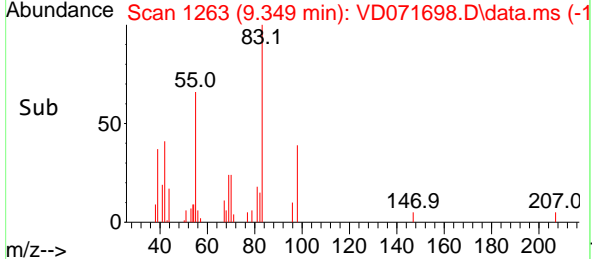
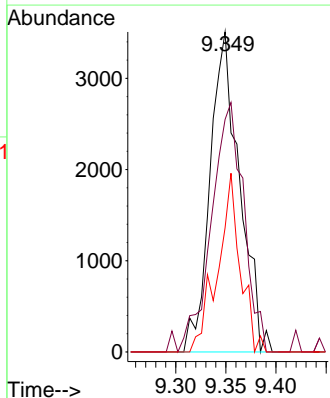
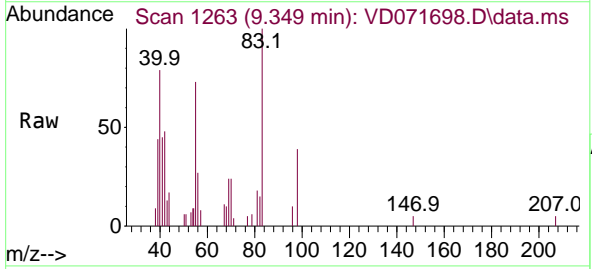
Ion	Ratio	Lower	Upper
113	100		
111	105.1	82.2	123.4
192	17.2	14.2	21.2

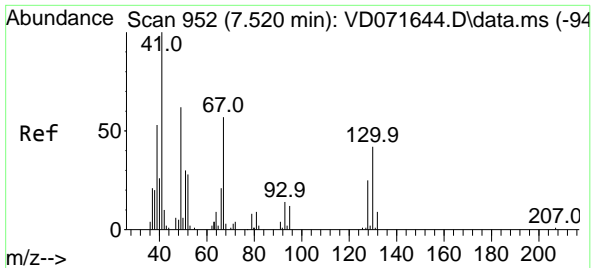


#39
 Methylcyclohexane
 Concen: 1.258 ug/l
 RT: 9.349 min Scan# 1263
 Delta R.T. -0.006 min
 Lab File: VD071698.D
 Acq: 12 Jan 2022 20:47

Tgt Ion: 83 Resp: 7170

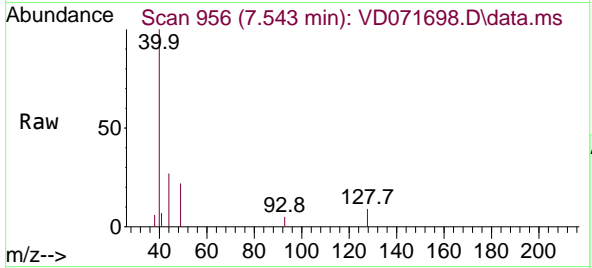
Ion	Ratio	Lower	Upper
83	100		
55	72.6	70.1	105.1
98	38.8	39.2	58.8#



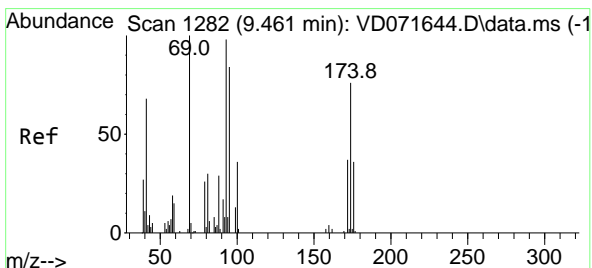
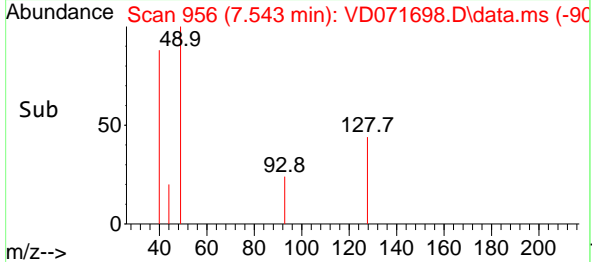
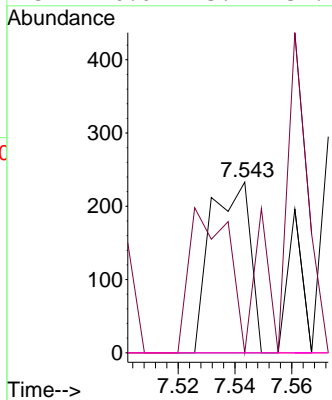


#41
 Methacrylonitrile
 Concen: 1.276 ug/l
 RT: 7.543 min Scan# 91
 Delta R.T. 0.023 min
 Lab File: VD071698.D
 Acq: 12 Jan 2022 20:47

Instrument :
 MSVOA_D
 ClientSampleId :
 MR-SOILPILE

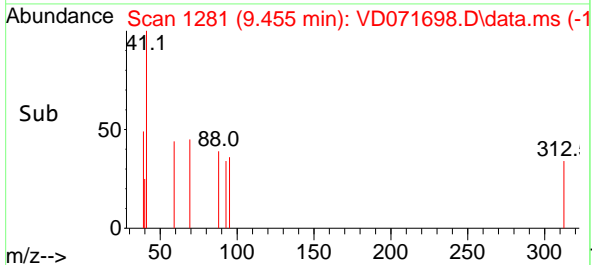
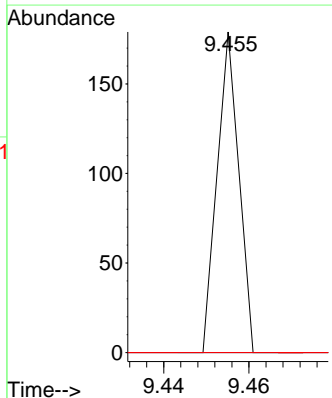
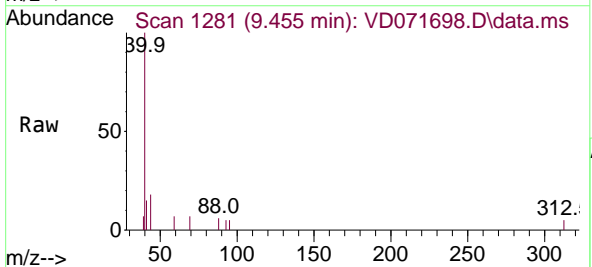


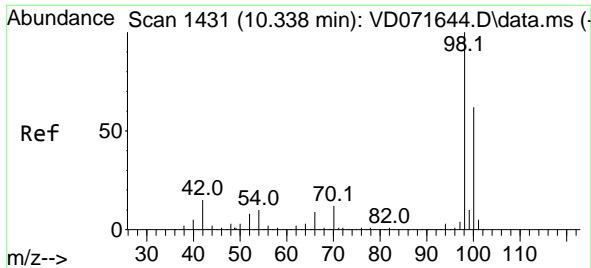
Tgt Ion	Resp	Lower	Upper
41	100		
39	83.6	46.9	70.3#
67	0.0	49.3	73.9#
52	0.0	23.1	34.7#



#49
 1,4-Dioxane
 Concen: 3.124 ug/l
 RT: 9.455 min Scan# 1281
 Delta R.T. 0.000 min
 Lab File: VD071698.D
 Acq: 12 Jan 2022 20:47

Tgt Ion	Resp	Lower	Upper
88	100		
43	0.0	34.6	52.0#
58	0.0	62.0	93.0#

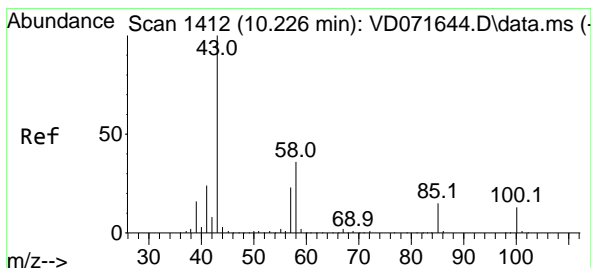
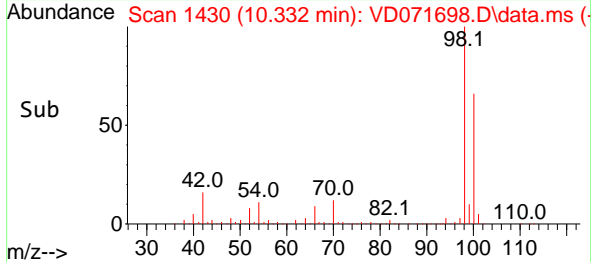
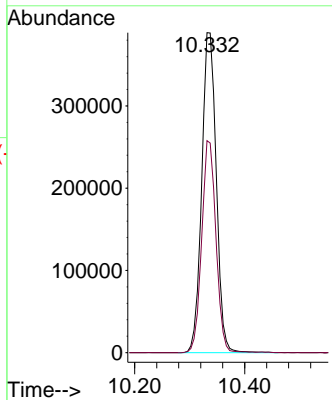
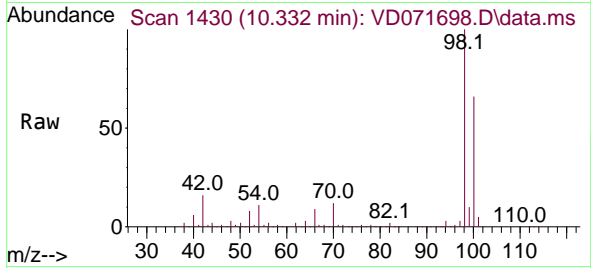




#50
 Toluene-d8
 Concen: 51.552 ug/l
 RT: 10.332 min Scan# 1430
 Delta R.T. -0.005 min
 Lab File: VD071698.D
 Acq: 12 Jan 2022 20:47

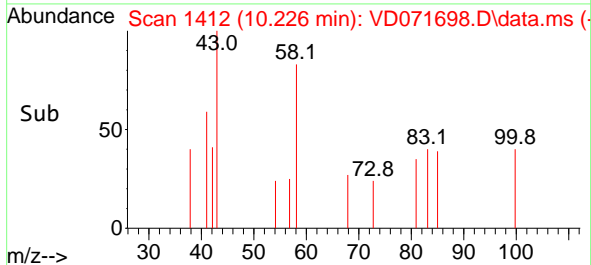
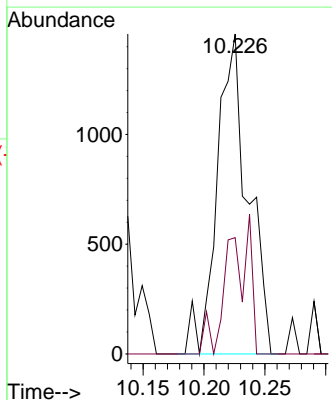
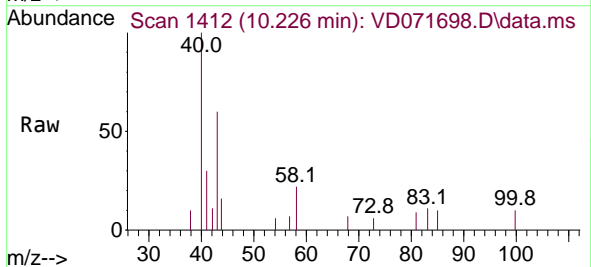
Instrument : MSVOA_D
 ClientSampleId : MR-SOILPILE

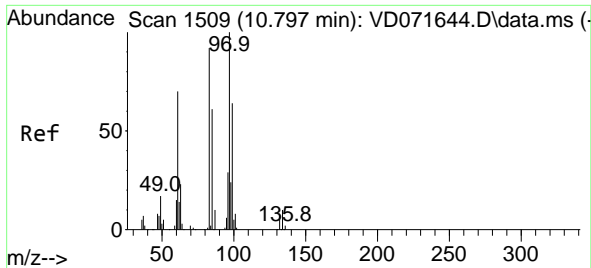
Tgt Ion: 98 Resp: 713735
 Ion Ratio Lower Upper
 98 100
 100 64.9 52.1 78.1



#51
 4-Methyl-2-Pentanone
 Concen: 1.055 ug/l
 RT: 10.226 min Scan# 1412
 Delta R.T. -0.000 min
 Lab File: VD071698.D
 Acq: 12 Jan 2022 20:47

Tgt Ion: 43 Resp: 2568
 Ion Ratio Lower Upper
 43 100
 58 31.2 28.2 42.2





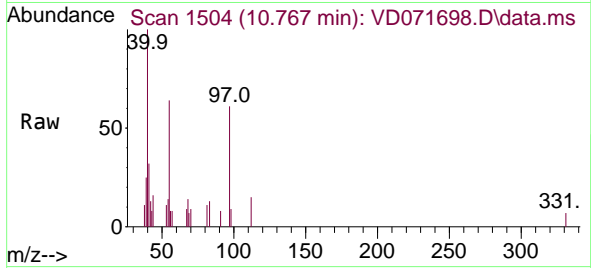
#55
 1,1,2-Trichloroethane
 Concen: 1.173 ug/l
 RT: 10.767 min Scan# 11
 Delta R.T. -0.029 min
 Lab File: VD071698.D
 Acq: 12 Jan 2022 20:47

Instrument :

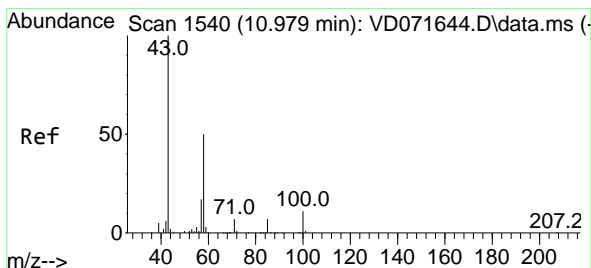
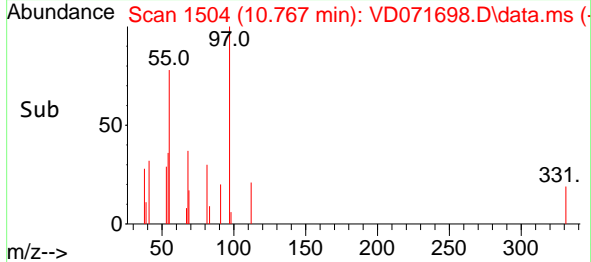
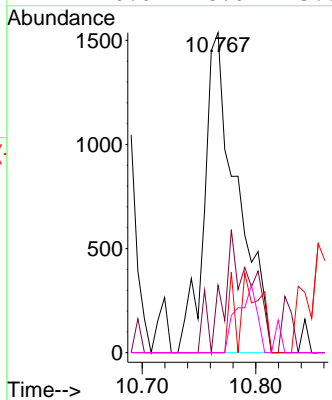
MSVOA_D

ClientSampleId :

MR-SOILPILE

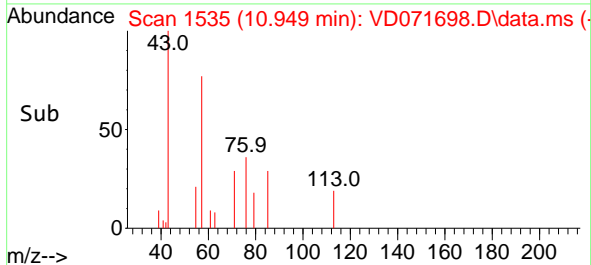
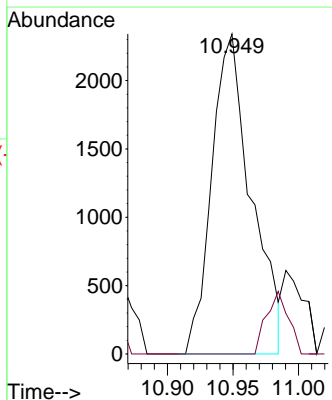
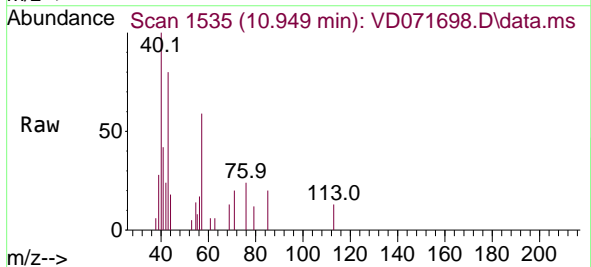


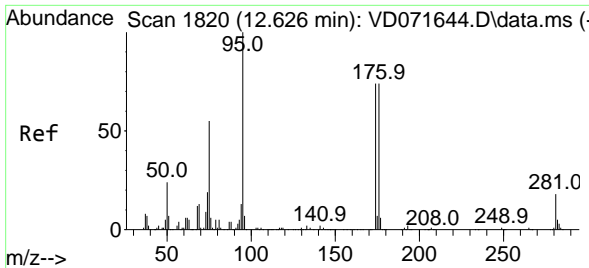
Tgt Ion	Resp	Lower	Upper
97	100		
83	21.1	68.1	102.1#
85	0.0	46.8	70.2#
99	0.0	48.6	73.0#



#59
 2-Hexanone
 Concen: 2.879 ug/l
 RT: 10.949 min Scan# 1535
 Delta R.T. -0.030 min
 Lab File: VD071698.D
 Acq: 12 Jan 2022 20:47

Tgt Ion	Resp	Lower	Upper
43	100		
58	0.0	24.3	72.8#

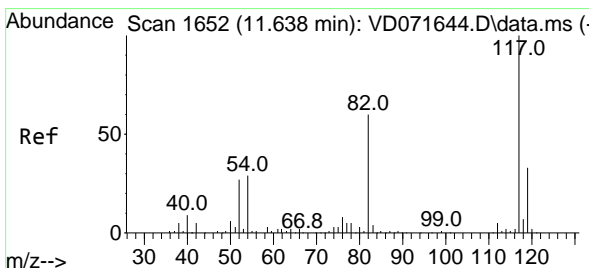
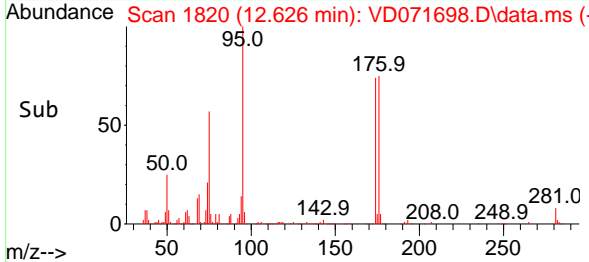
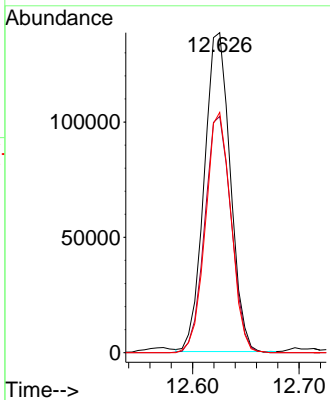
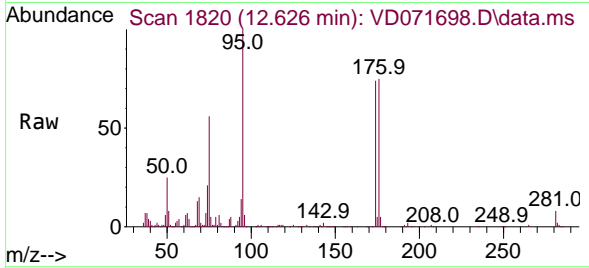




#62
 4-Bromofluorobenzene
 Concen: 48.131 ug/l
 RT: 12.626 min Scan# 1820
 Delta R.T. -0.000 min
 Lab File: VD071698.D
 Acq: 12 Jan 2022 20:47

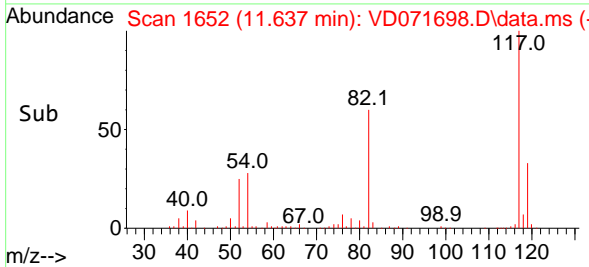
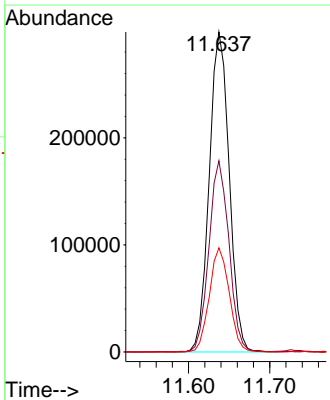
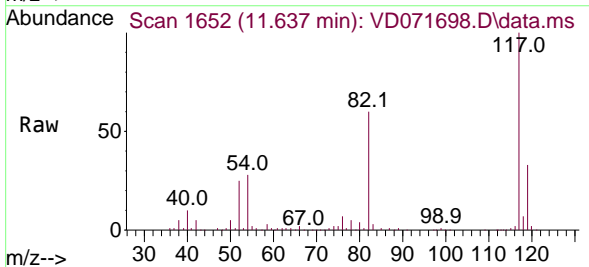
Instrument : MSVOA_D
 ClientSampleId : MR-SOILPILE

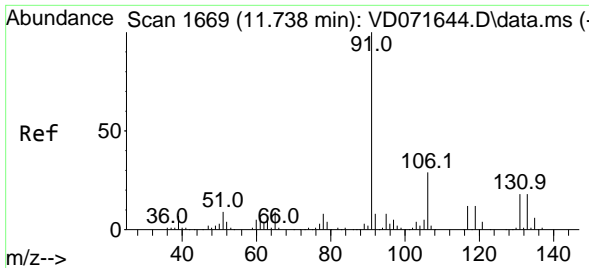
Tgt Ion	Resp	Lower	Upper
95	100		
174	75.1	0.0	150.0
176	73.5	0.0	146.4



#63
 Chlorobenzene-d5
 Concen: 50.000 ug/l
 RT: 11.637 min Scan# 1652
 Delta R.T. 0.000 min
 Lab File: VD071698.D
 Acq: 12 Jan 2022 20:47

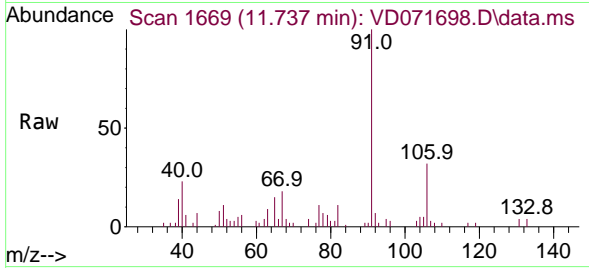
Tgt Ion	Resp	Lower	Upper
117	100		
82	59.7	46.9	70.3
119	32.5	26.6	39.8



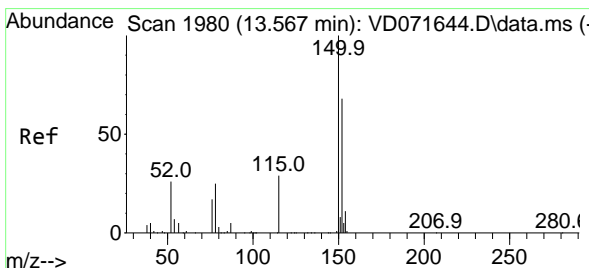
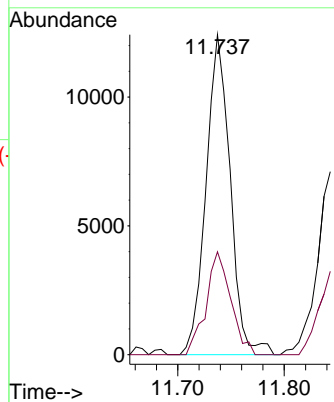
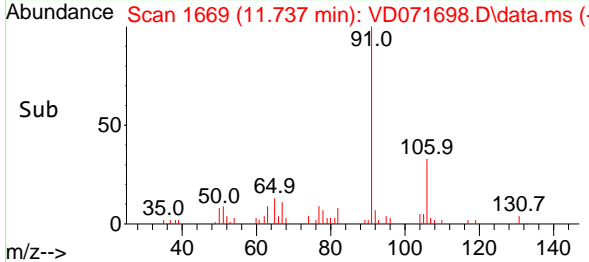


#67
 Ethyl Benzene
 Concen: 1.088 ug/l
 RT: 11.737 min Scan# 1669
 Delta R.T. 0.000 min
 Lab File: VD071698.D
 Acq: 12 Jan 2022 20:47

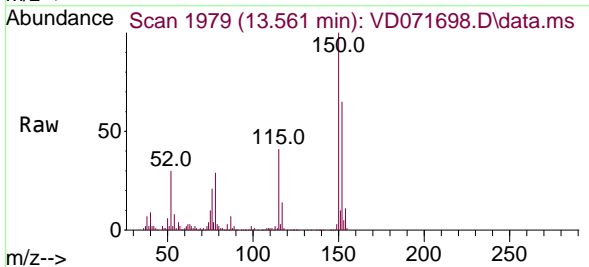
Instrument :
 MSVOA_D
 ClientSampleId :
 MR-SOILPILE



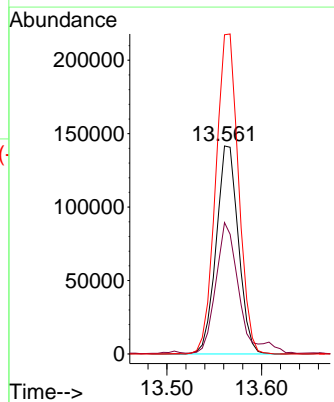
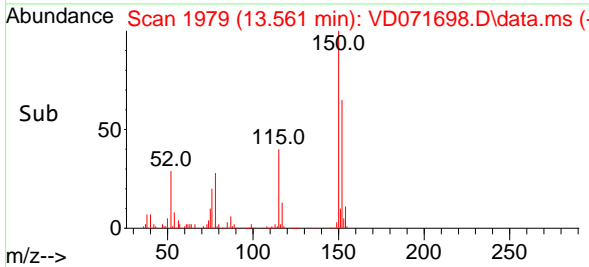
Tgt Ion: 91 Resp: 19559
 Ion Ratio Lower Upper
 91 100
 106 32.1 23.6 35.4

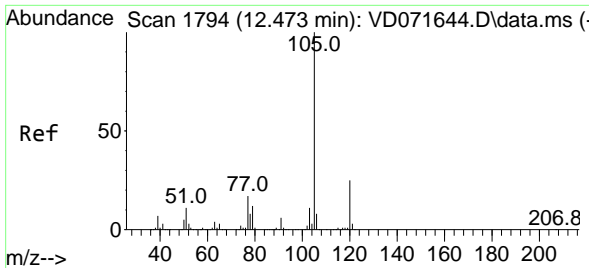


#72
 1,4-Dichlorobenzene-d4
 Concen: 50.000 ug/l
 RT: 13.561 min Scan# 1979
 Delta R.T. -0.006 min
 Lab File: VD071698.D
 Acq: 12 Jan 2022 20:47



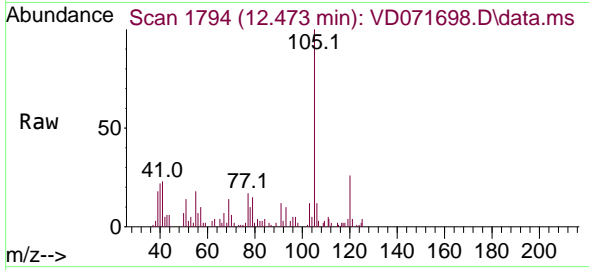
Tgt Ion: 152 Resp: 230406
 Ion Ratio Lower Upper
 152 100
 115 65.5 31.5 94.5
 150 157.8 0.0 348.0



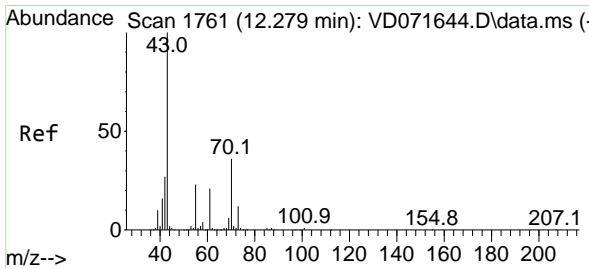
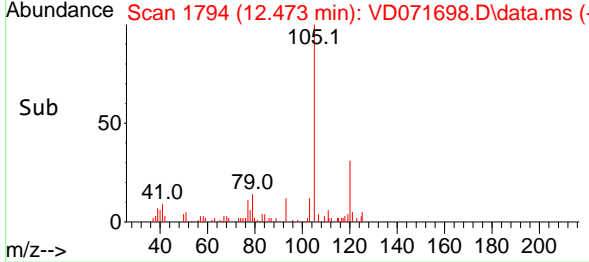
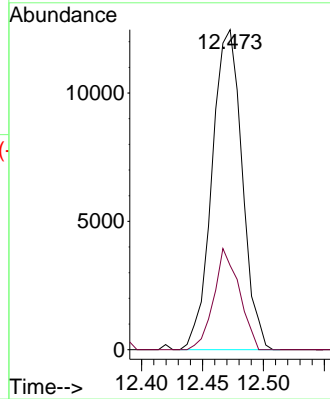


#73
 Isopropylbenzene
 Concen: 1.297 ug/l
 RT: 12.473 min Scan# 11
 Delta R.T. -0.000 min
 Lab File: VD071698.D
 Acq: 12 Jan 2022 20:47

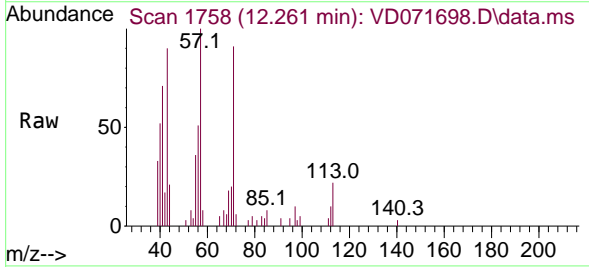
Instrument : MSVOA_D
 ClientSampleId : MR-SOILPILE



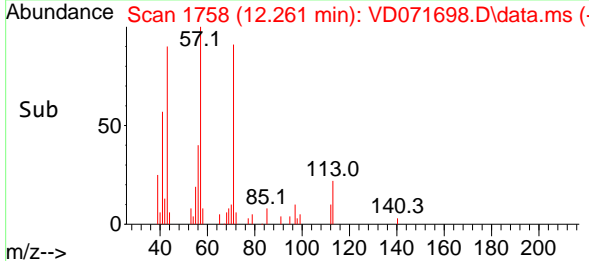
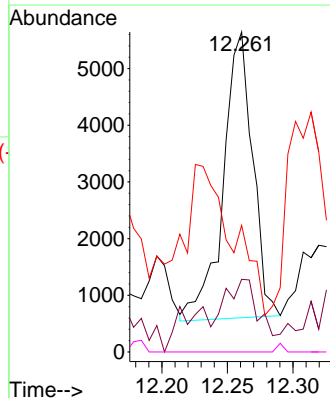
Tgt Ion: 105 Resp: 21482
 Ion Ratio Lower Upper
 105 100
 120 26.8 12.5 37.5

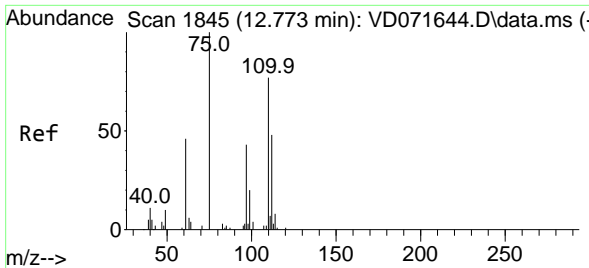


#74
 N-ethyl acetate
 Concen: 1.939 ug/l
 RT: 12.261 min Scan# 1758
 Delta R.T. -0.017 min
 Lab File: VD071698.D
 Acq: 12 Jan 2022 20:47



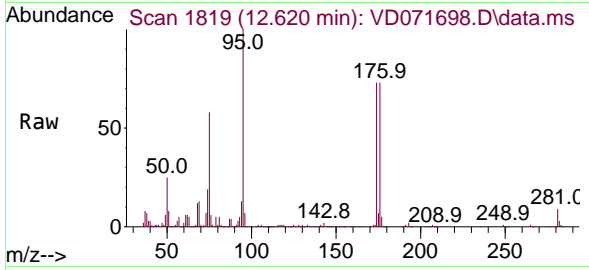
Tgt Ion: 43 Resp: 7877
 Ion Ratio Lower Upper
 43 100
 70 19.1 29.5 44.3#
 55 0.0 19.1 28.7#
 61 0.0 17.6 26.4#



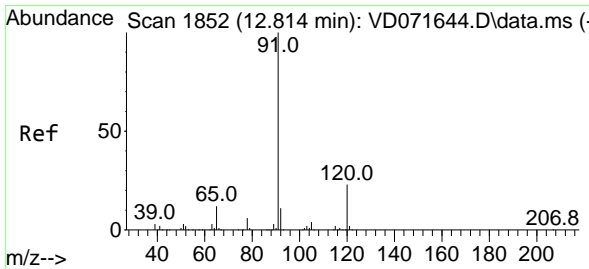
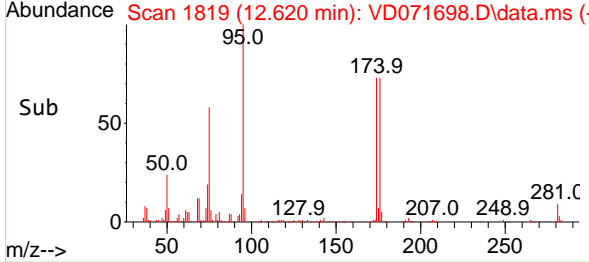
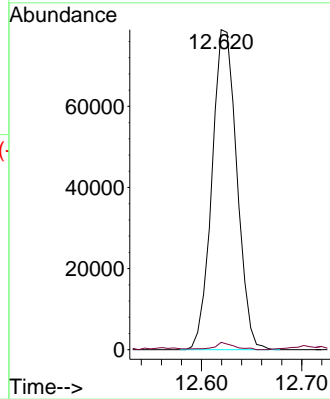


#76
 1,2,3-Trichloropropane
 Concen: 61.090 ug/l
 RT: 12.620 min Scan# 1819
 Delta R.T. -0.153 min
 Lab File: VD071698.D
 Acq: 12 Jan 2022 20:47

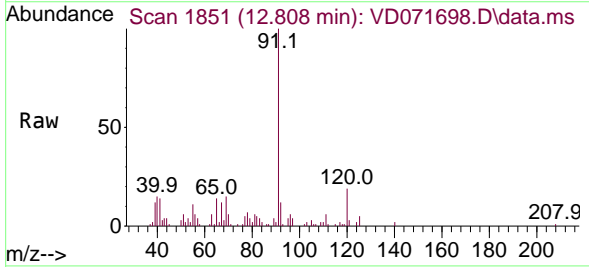
Instrument : MSVOA_D
 ClientSampleId : MR-SOILPILE



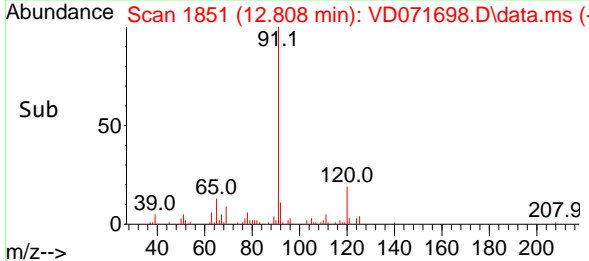
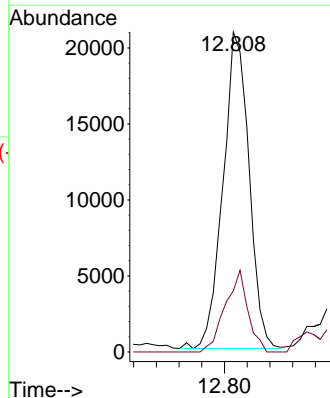
Tgt Ion: 75 Resp: 136008
 Ion Ratio Lower Upper
 75 100
 77 1.8 0.0 0.0#

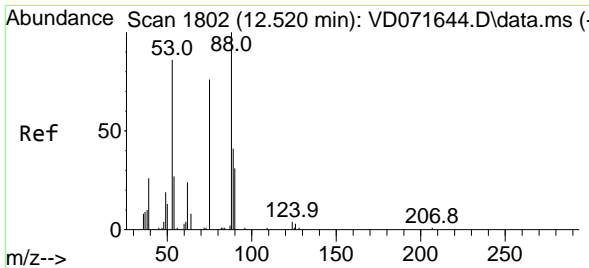


#78
 n-propylbenzene
 Concen: 1.586 ug/l
 RT: 12.808 min Scan# 1851
 Delta R.T. -0.006 min
 Lab File: VD071698.D
 Acq: 12 Jan 2022 20:47



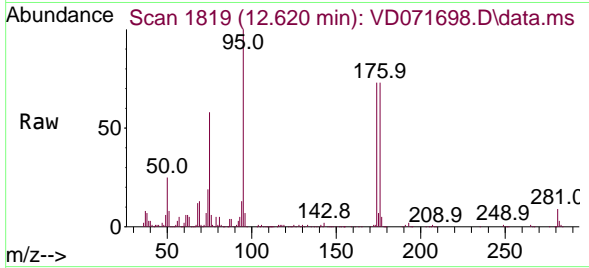
Tgt Ion: 91 Resp: 33030
 Ion Ratio Lower Upper
 91 100
 120 22.5 10.9 32.7



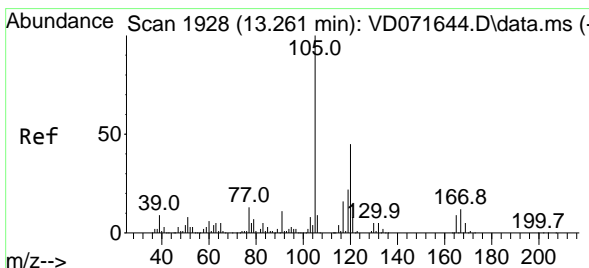
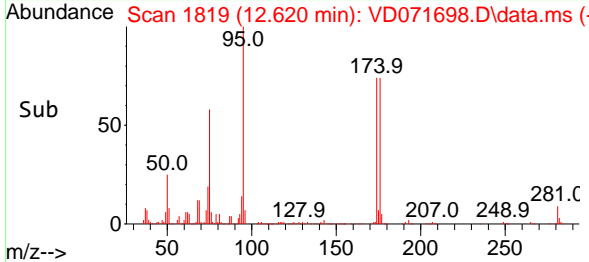
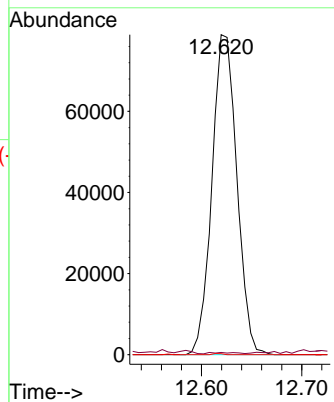


#81
 trans-1,4-Dichloro-2-butene
 Concen: 170.311 ug/l
 RT: 12.620 min Scan# 1819
 Delta R.T. 0.100 min
 Lab File: VD071698.D
 Acq: 12 Jan 2022 20:47

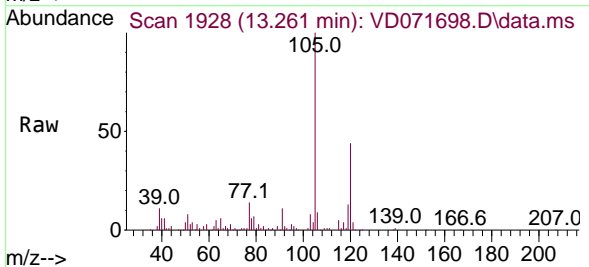
Instrument : MSVOA_D
 ClientSampleId : MR-SOILPILE



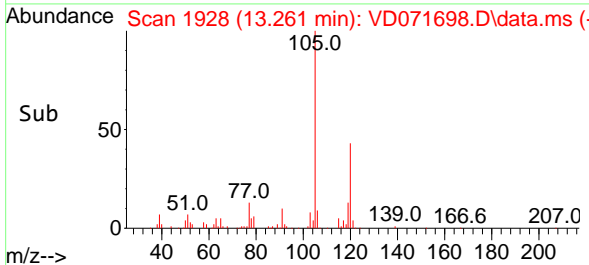
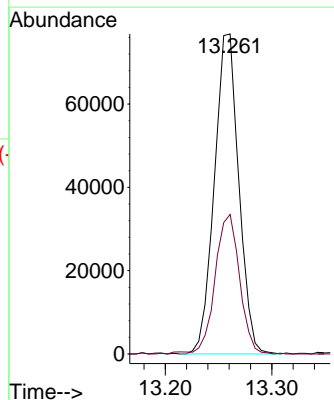
Tgt Ion: 75 Resp: 136008
 Ion Ratio Lower Upper
 75 100
 53 0.5 95.4 143.0#
 89 0.1 37.2 55.8#

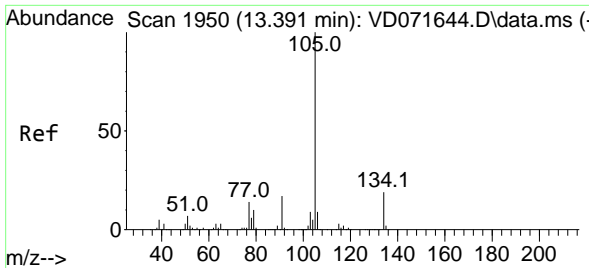


#84
 1,2,4-Trimethylbenzene
 Concen: 8.931 ug/l
 RT: 13.261 min Scan# 1928
 Delta R.T. -0.000 min
 Lab File: VD071698.D
 Acq: 12 Jan 2022 20:47



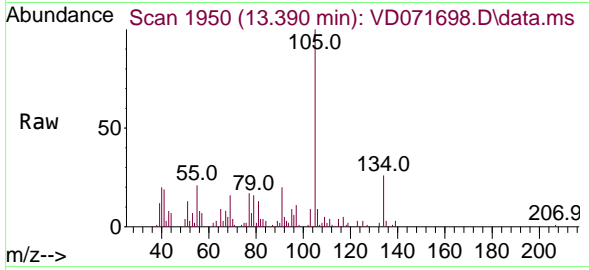
Tgt Ion: 105 Resp: 122192
 Ion Ratio Lower Upper
 105 100
 120 43.9 22.3 66.9



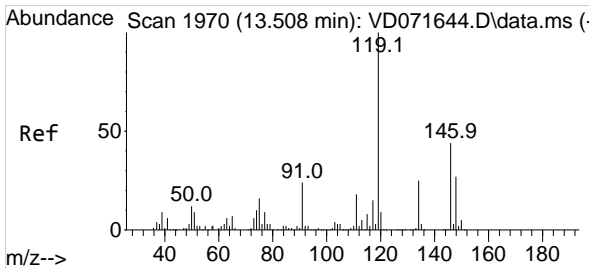
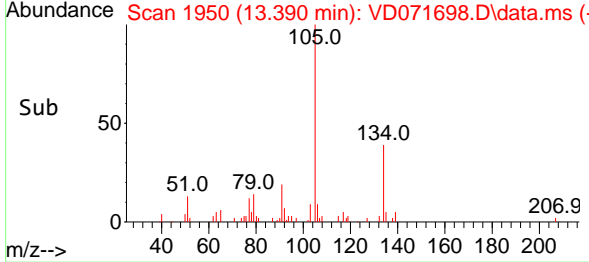
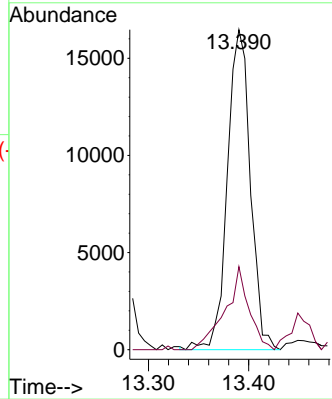


#85
 sec-Butylbenzene
 Concen: 1.446 ug/l
 RT: 13.390 min Scan# 1950
 Delta R.T. 0.000 min
 Lab File: VD071698.D
 Acq: 12 Jan 2022 20:47

Instrument : MSVOA_D
 ClientSampleId : MR-SOILPILE

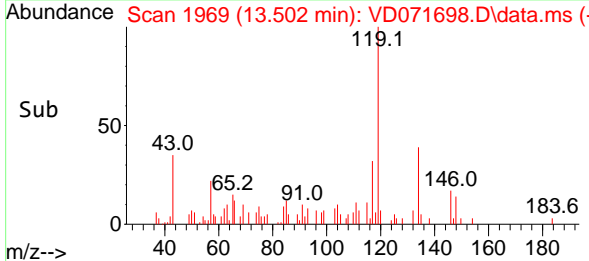
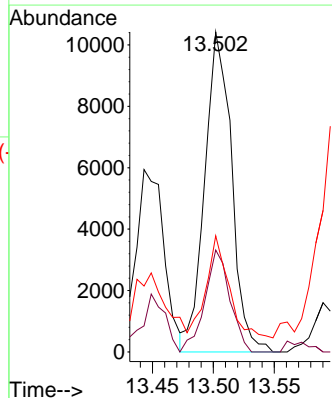
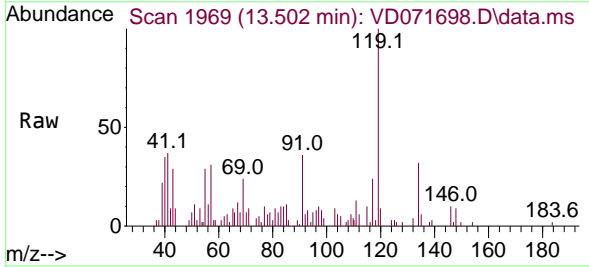


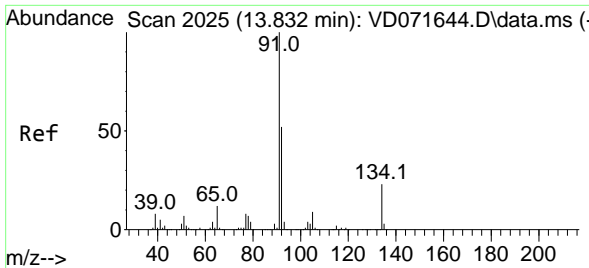
Tgt Ion:105 Resp: 26184
 Ion Ratio Lower Upper
 105 100
 134 27.0 9.8 29.3



#86
 p-Isopropyltoluene
 Concen: 1.080 ug/l
 RT: 13.502 min Scan# 1969
 Delta R.T. -0.006 min
 Lab File: VD071698.D
 Acq: 12 Jan 2022 20:47

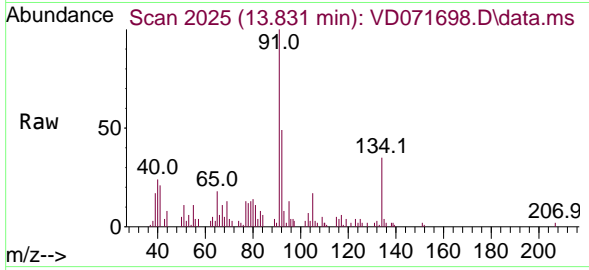
Tgt Ion:119 Resp: 16054
 Ion Ratio Lower Upper
 119 100
 134 29.6 12.7 38.1
 91 26.7 12.4 37.2



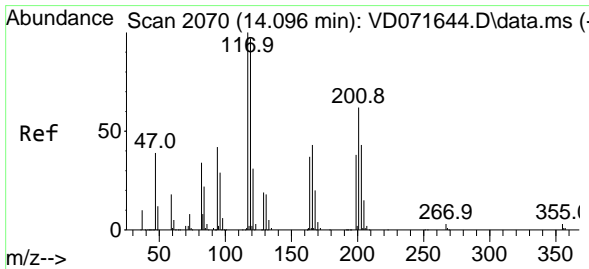
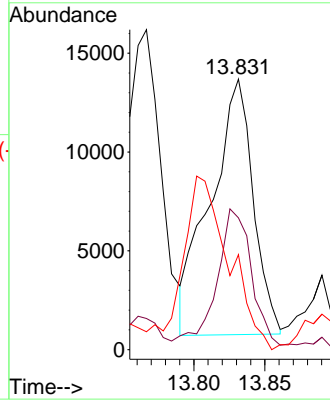
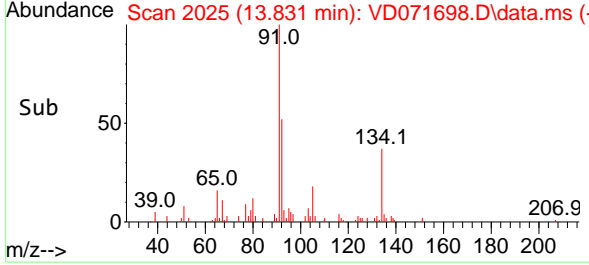


#89
 n-Butylbenzene
 Concen: 1.816 ug/l
 RT: 13.831 min Scan# 2025
 Delta R.T. 0.000 min
 Lab File: VD071698.D
 Acq: 12 Jan 2022 20:47

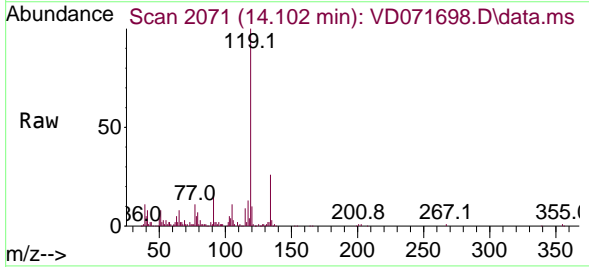
Instrument : MSVOA_D
 ClientSampleId : MR-SOILPILE



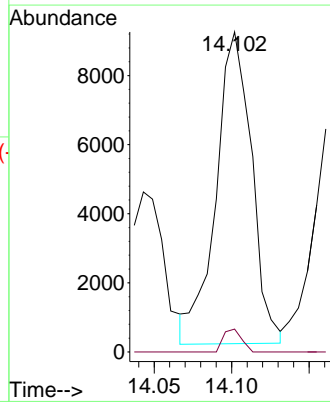
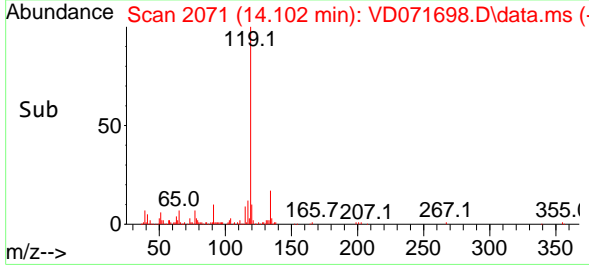
Tgt Ion: 91 Resp: 27031
 Ion Ratio Lower Upper
 91 100
 92 47.2 26.6 79.8
 134 0.0 12.1 36.3#

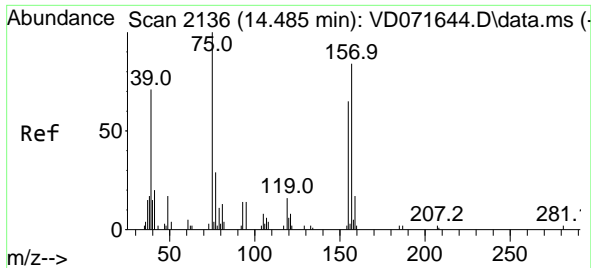


#90
 Hexachloroethane
 Concen: 4.899 ug/l
 RT: 14.102 min Scan# 2071
 Delta R.T. -0.000 min
 Lab File: VD071698.D
 Acq: 12 Jan 2022 20:47



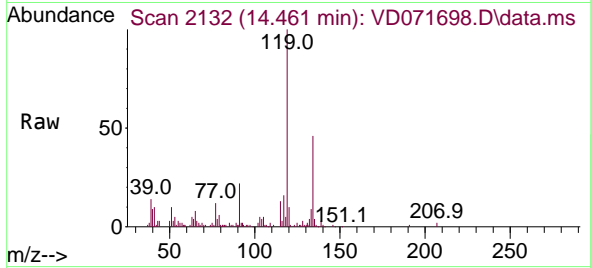
Tgt Ion: 117 Resp: 14410
 Ion Ratio Lower Upper
 117 100
 201 3.8 32.1 96.5#





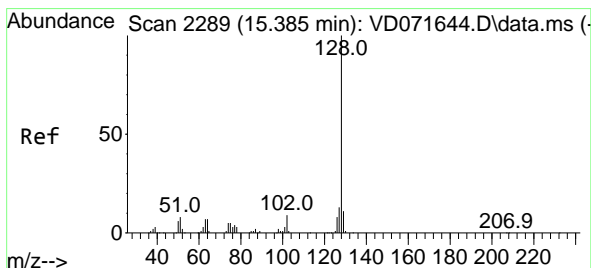
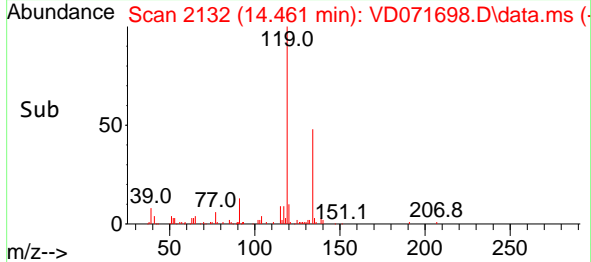
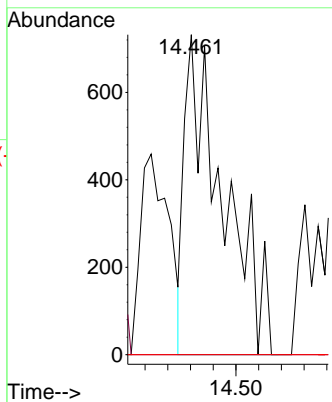
#92
 1,2-Dibromo-3-Chloropropane
 Concen: 3.666 ug/l
 RT: 14.461 min Scan# 2132
 Delta R.T. -0.029 min
 Lab File: VD071698.D
 Acq: 12 Jan 2022 20:47

Instrument : MSVOA_D
 ClientSampleId : MR-SOILPILE



Tgt Ion: 75 Resp: 1729

Ion	Ratio	Lower	Upper
75	100		
155	0.0	35.4	106.1#
157	0.0	44.9	134.5#



#95
 Naphthalene
 Concen: 28.461 ug/l
 RT: 15.384 min Scan# 2289
 Delta R.T. 0.000 min
 Lab File: VD071698.D
 Acq: 12 Jan 2022 20:47

Tgt Ion: 128 Resp: 183707

Ion	Ratio	Lower	Upper
128	100		
127	13.7	10.9	16.3
129	11.1	9.1	13.7

