

Data Path : Z:\voasrv\HPCHEM1\MSVOA\_D\Data\VD012424\  
 Data File : VD078231.D  
 Acq On : 24 Jan 2024 18:53  
 Operator : RP/MD  
 Sample : P1246-02  
 Misc : 3.21G/5.0ml/MSVOA\_D/SOIL/A  
 ALS Vial : 17 Sample Multiplier: 1

**Instrument :**  
 MSVOA\_D  
**ClientSampleId :**  
 TP-COMP-012424

Quant Time: Jan 25 00:30:24 2024  
 Quant Method : Z:\voasrv\HPCHEM1\MSVOA\_D\Method\82D012224S.M  
 Quant Title : SW846 8260  
 QLast Update : Tue Jan 23 05:43:07 2024  
 Response via : Initial Calibration

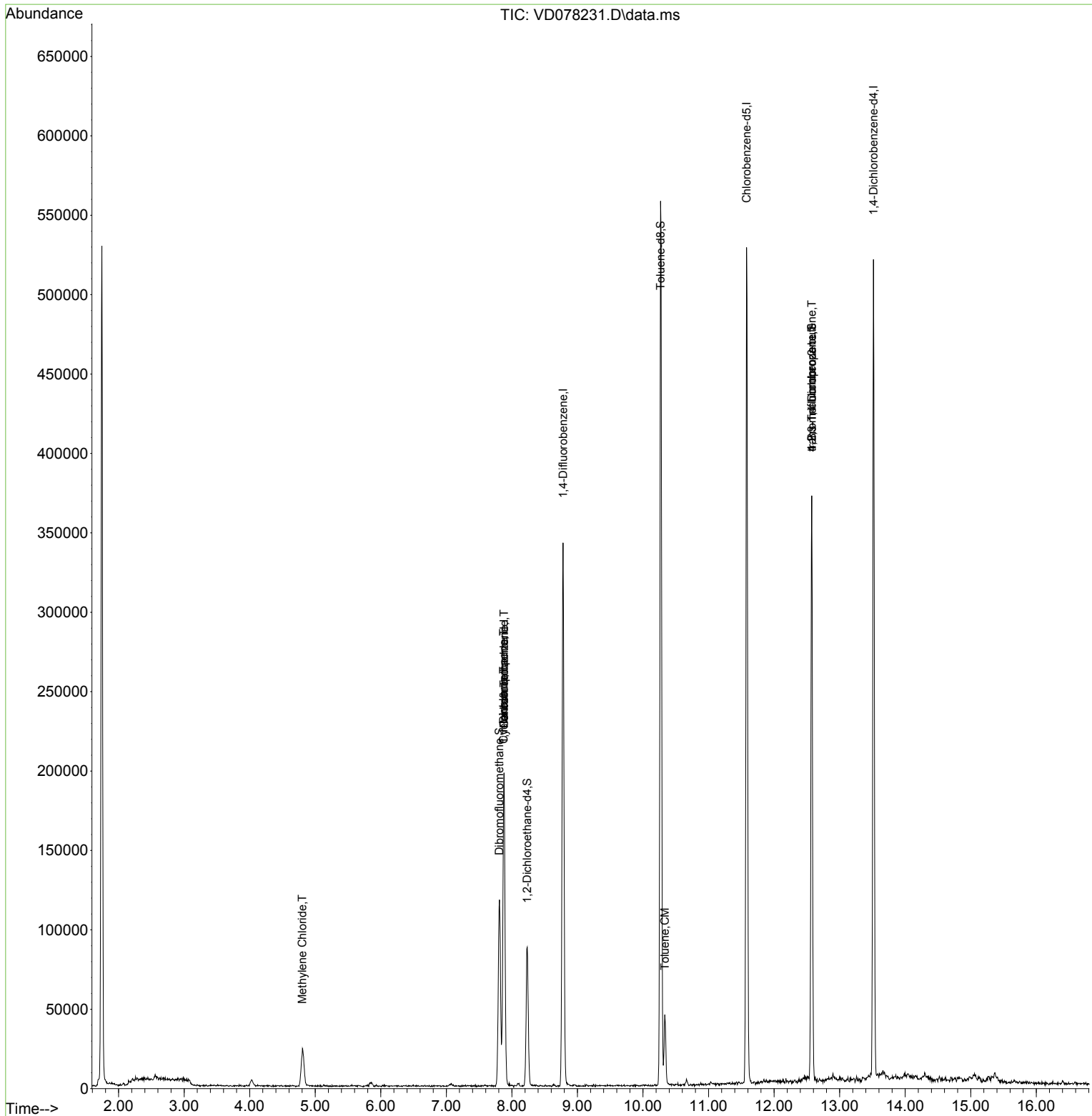
Compound	R.T.	QIon	Response	Conc	Units	Dev(Min)
-----						
Internal Standards						
1) Pentafluorobenzene	7.881	168	143482	50.000	ug/l	# 0.00
34) 1,4-Difluorobenzene	8.781	114	298525	50.000	ug/l	0.00
63) Chlorobenzene-d5	11.581	117	299519	50.000	ug/l	0.00
72) 1,4-Dichlorobenzene-d4	13.516	152	125060	50.000	ug/l	0.00
System Monitoring Compounds						
33) 1,2-Dichloroethane-d4	8.234	65	66655	40.693	ug/l	0.00
Spiked Amount	50.000	Range	50 - 163	Recovery	=	81.380%
35) Dibromofluoromethane	7.810	113	87086	44.325	ug/l	0.00
Spiked Amount	50.000	Range	54 - 147	Recovery	=	88.660%
50) Toluene-d8	10.269	98	384968	49.485	ug/l	0.00
Spiked Amount	50.000	Range	58 - 134	Recovery	=	98.980%
62) 4-Bromofluorobenzene	12.575	95	118859	52.684	ug/l	0.00
Spiked Amount	50.000	Range	30 - 143	Recovery	=	105.360%
Target Compounds						
						Qvalue
3) Chloromethane	2.152	50	96	Below Cal	#	41
16) Acetone	4.022	43	6887	Below Cal		99
20) Methylene Chloride	4.805	84	18263	5.246	ug/l #	87
25) 2-Butanone	7.075	43	71	Below Cal	#	37
31) Cyclohexane	7.875	56	4024	1.329	ug/l #	46
36) 1,1-Dichloropropene	7.875	75	12773	3.953	ug/l #	47
38) Carbon Tetrachloride	7.881	117	15880	4.977	ug/l #	14
52) Toluene	10.334	92	18769	3.230	ug/l	97
76) 1,2,3-Trichloropropane	12.575	75	62828	52.379	ug/l #	100
81) trans-1,4-Dichloro-2-b...	12.575	75	62828	112.827	ug/l #	17
-----						

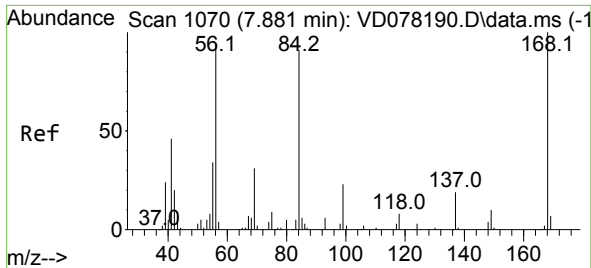
(#) = qualifier out of range (m) = manual integration (+) = signals summed

Data Path : Z:\voasrv\HPCHEM1\MSVOA\_D\Data\VD012424\  
 Data File : VD078231.D  
 Acq On : 24 Jan 2024 18:53  
 Operator : RP/MD  
 Sample : P1246-02  
 Misc : 3.21G/5.0ml/MSVOA\_D/SOIL/A  
 ALS Vial : 17 Sample Multiplier: 1

Instrument :  
 MSVOA\_D  
 ClientSampleId :  
 TP-COMP-012424

Quant Time: Jan 25 00:30:24 2024  
 Quant Method : Z:\voasrv\HPCHEM1\MSVOA\_D\Method\82D012224S.M  
 Quant Title : SW846 8260  
 QLast Update : Tue Jan 23 05:43:07 2024  
 Response via : Initial Calibration

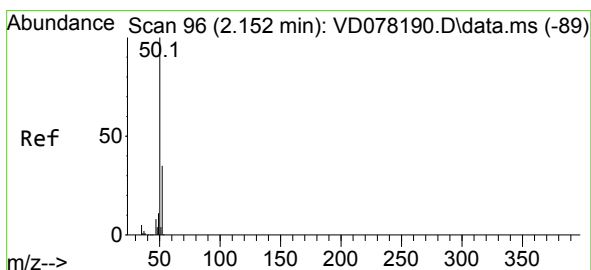
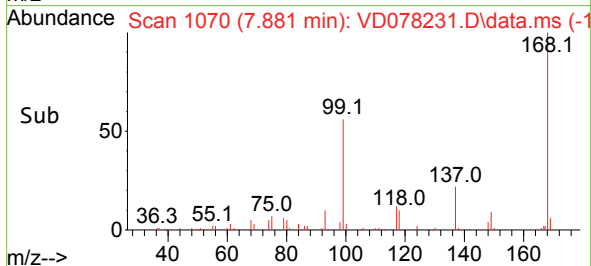
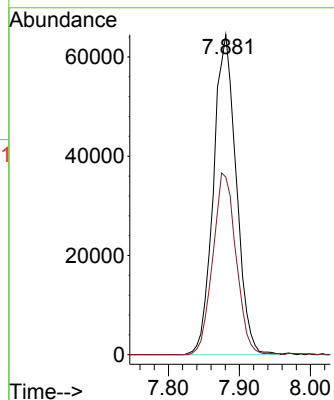
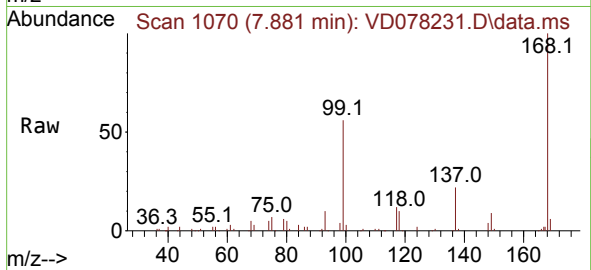




#1  
 Pentafluorobenzene  
 Concen: 50.000 ug/l  
 RT: 7.881 min Scan# 1070  
 Delta R.T. -0.000 min  
 Lab File: VD078231.D  
 Acq: 24 Jan 2024 18:53

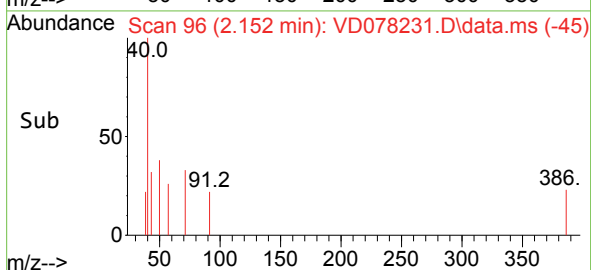
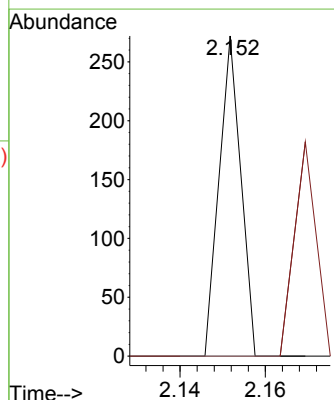
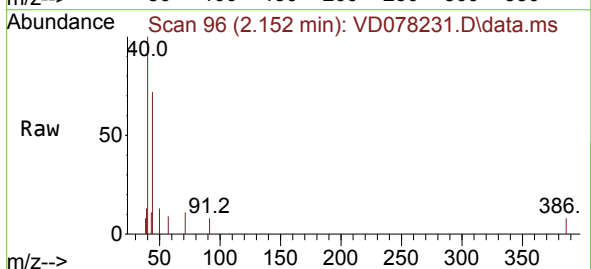
Instrument : MSVOA\_D  
 ClientSampleId : TP-COMP-012424

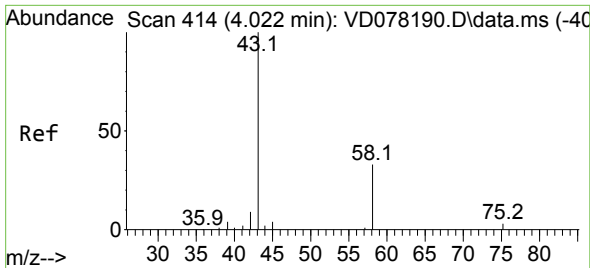
Tgt Ion:168 Resp: 143482  
 Ion Ratio Lower Upper  
 168 100  
 99 55.5 36.7 55.1#



#3  
 Chloromethane  
 Concen: Below Cal  
 RT: 2.152 min Scan# 96  
 Delta R.T. -0.000 min  
 Lab File: VD078231.D  
 Acq: 24 Jan 2024 18:53

Tgt Ion: 50 Resp: 96  
 Ion Ratio Lower Upper  
 50 100  
 52 0.0 26.6 40.0#

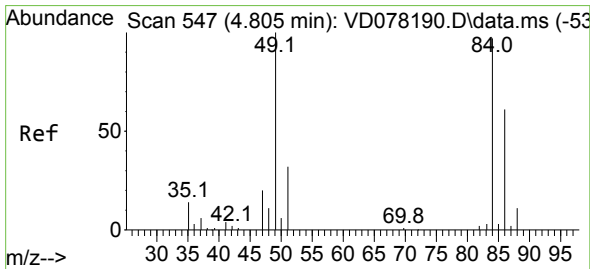
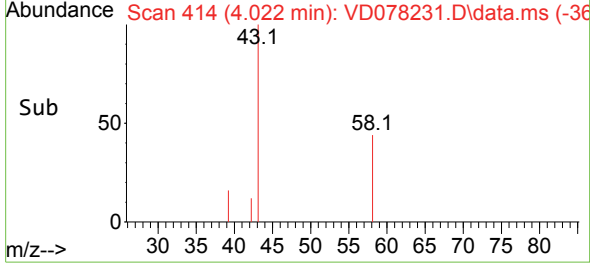
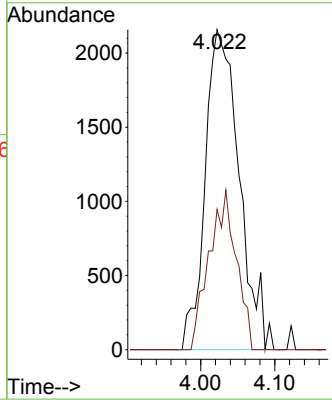
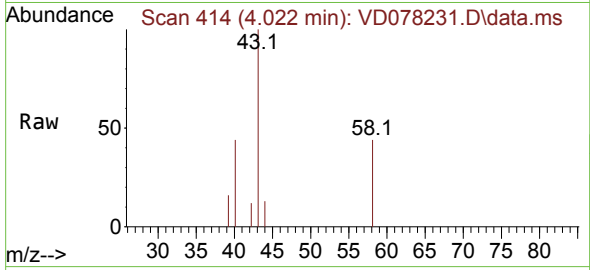




#16  
 Acetone  
 Concen: Below Cal  
 RT: 4.022 min Scan# 414  
 Delta R.T. 0.000 min  
 Lab File: VD078231.D  
 Acq: 24 Jan 2024 18:53

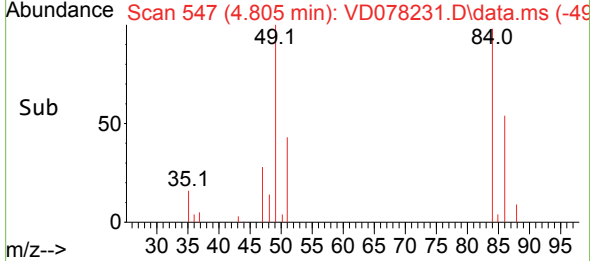
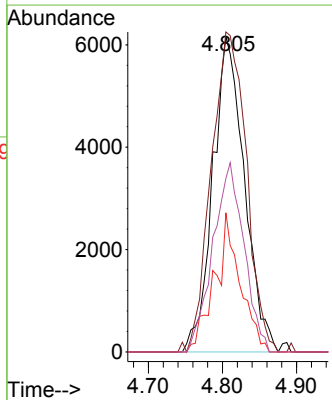
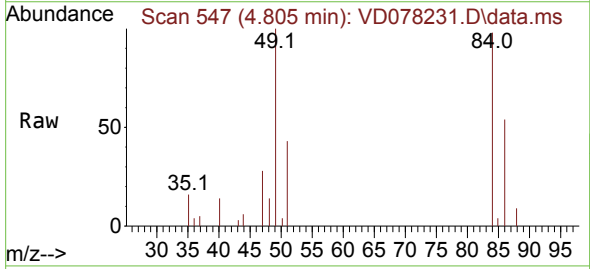
Instrument : MSVOA\_D  
 ClientSampleId : TP-COMP-012424

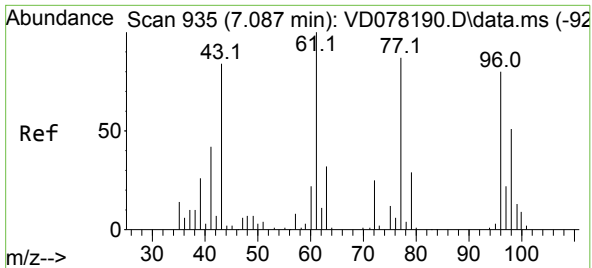
Tgt Ion: 43 Resp: 6887  
 Ion Ratio Lower Upper  
 43 100  
 58 43.8 34.7 52.1



#20  
 Methylene Chloride  
 Concen: 5.246 ug/l  
 RT: 4.805 min Scan# 547  
 Delta R.T. -0.000 min  
 Lab File: VD078231.D  
 Acq: 24 Jan 2024 18:53

Tgt Ion: 84 Resp: 18263  
 Ion Ratio Lower Upper  
 84 100  
 49 101.6 71.4 107.2  
 51 44.2 24.5 36.7#  
 86 55.1 48.7 73.1

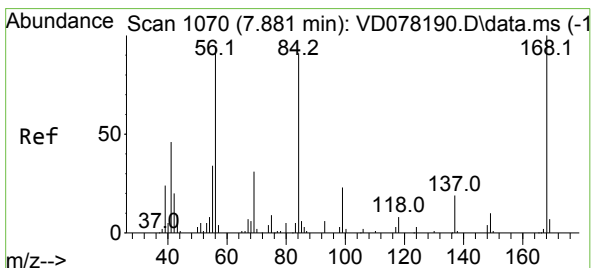
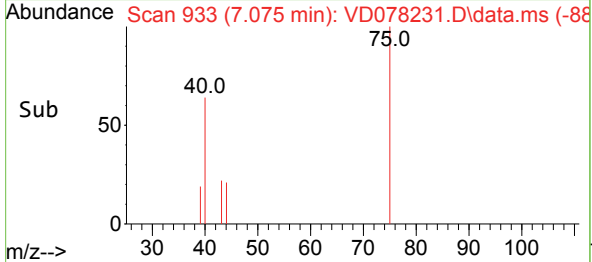
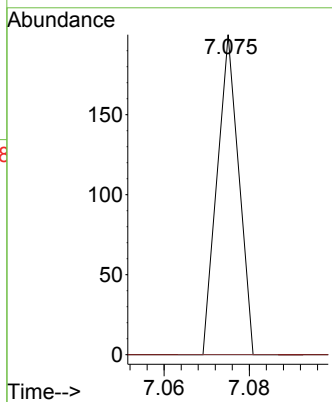
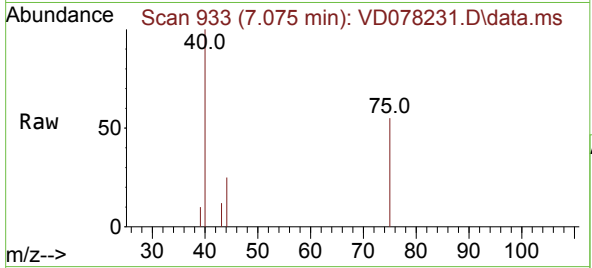




#25  
 2-Butanone  
 Concen: Below Cal  
 RT: 7.075 min Scan# 91  
 Delta R.T. -0.012 min  
 Lab File: VD078231.D  
 Acq: 24 Jan 2024 18:53

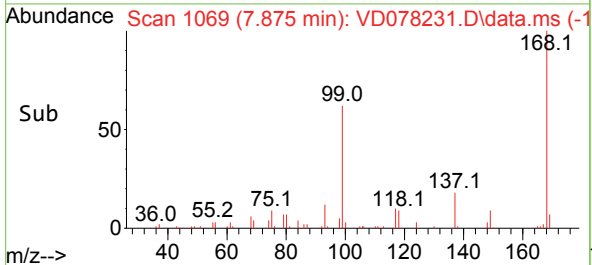
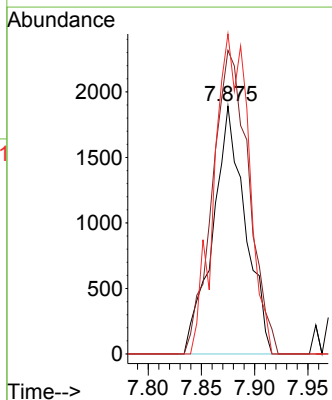
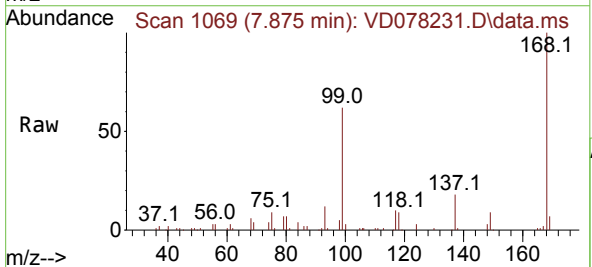
Instrument : MSVOA\_D  
 ClientSampleId : TP-COMP-012424

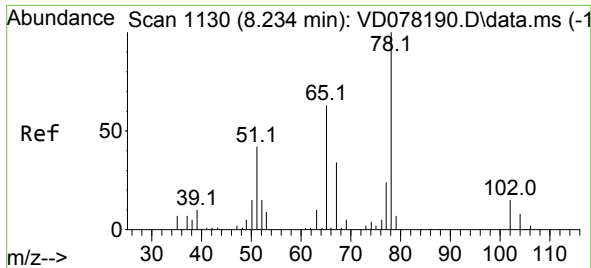
Tgt Ion: 43 Resp: 71  
 Ion Ratio Lower Upper  
 43 100  
 72 0.0 30.7 46.1#



#31  
 Cyclohexane  
 Concen: 1.329 ug/l  
 RT: 7.875 min Scan# 1069  
 Delta R.T. -0.006 min  
 Lab File: VD078231.D  
 Acq: 24 Jan 2024 18:53

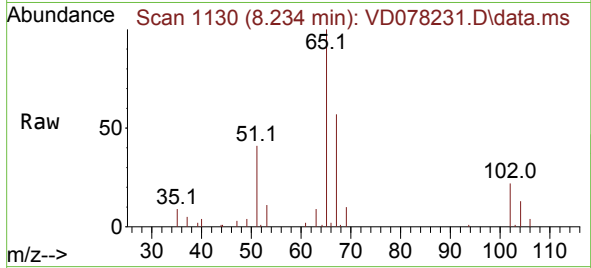
Tgt Ion: 56 Resp: 4024  
 Ion Ratio Lower Upper  
 56 100  
 69 122.4 28.6 43.0#  
 84 129.1 84.8 127.2#



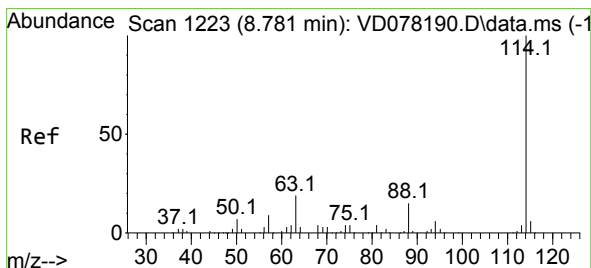
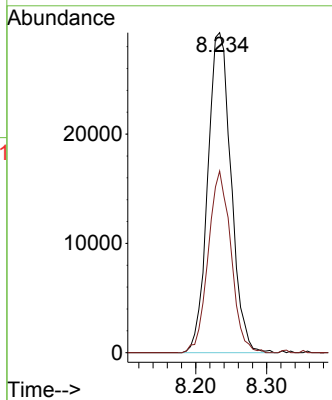
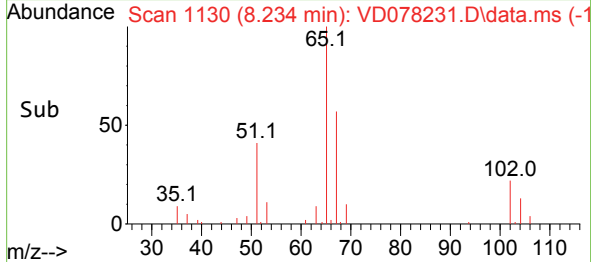


#33  
 1,2-Dichloroethane-d4  
 Concen: 40.693 ug/l  
 RT: 8.234 min Scan# 1130  
 Delta R.T. -0.000 min  
 Lab File: VD078231.D  
 Acq: 24 Jan 2024 18:53

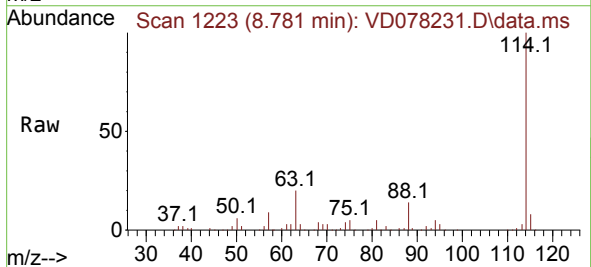
Instrument : MSVOA\_D  
 ClientSampleId : TP-COMP-012424



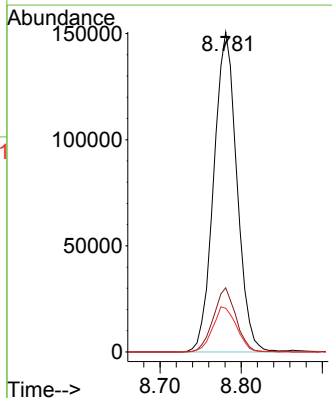
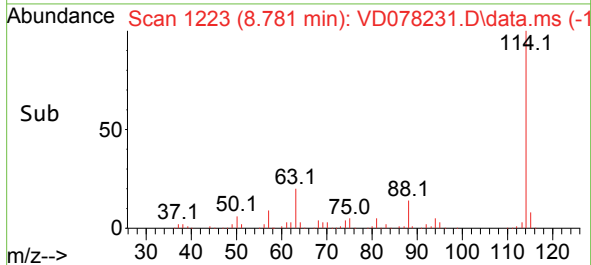
Tgt Ion: 65 Resp: 66655  
 Ion Ratio Lower Upper  
 65 100  
 67 55.4 0.0 115.0

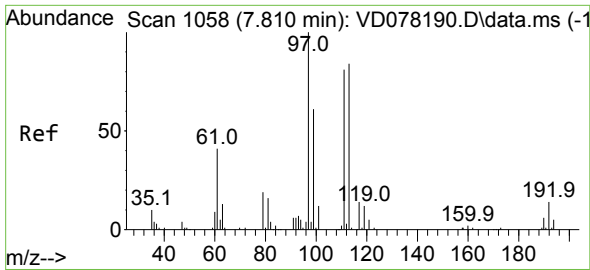


#34  
 1,4-Difluorobenzene  
 Concen: 50.000 ug/l  
 RT: 8.781 min Scan# 1223  
 Delta R.T. -0.000 min  
 Lab File: VD078231.D  
 Acq: 24 Jan 2024 18:53



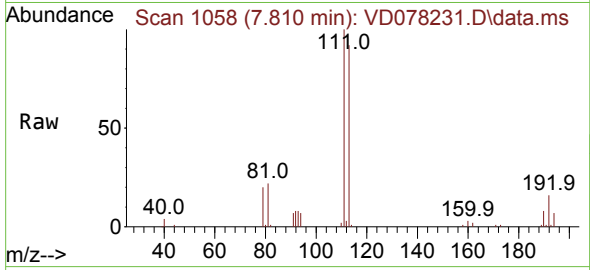
Tgt Ion: 114 Resp: 298525  
 Ion Ratio Lower Upper  
 114 100  
 63 20.0 0.0 33.4  
 88 13.6 0.0 26.2



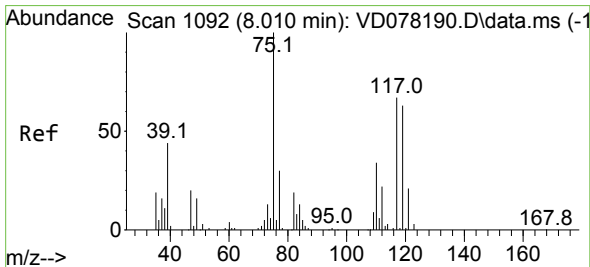
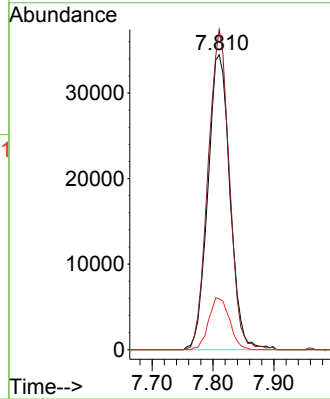
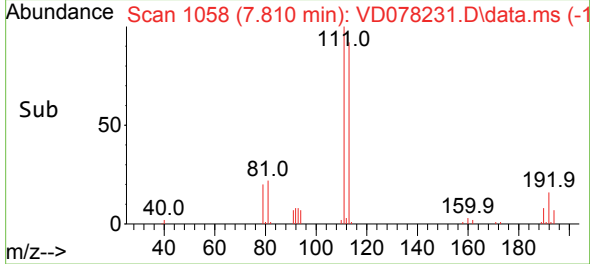


#35  
 Dibromofluoromethane  
 Concen: 44.325 ug/l  
 RT: 7.810 min Scan# 1058  
 Delta R.T. -0.000 min  
 Lab File: VD078231.D  
 Acq: 24 Jan 2024 18:53

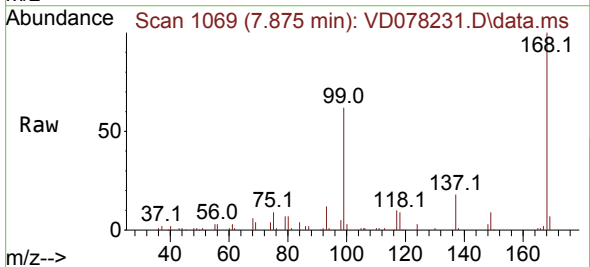
Instrument : MSVOA\_D  
 ClientSampleId : TP-COMP-012424



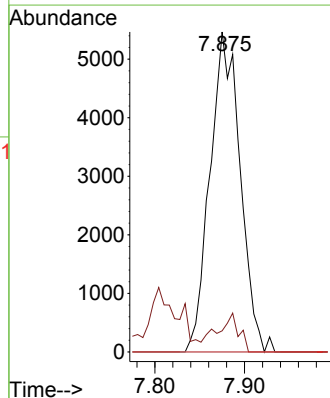
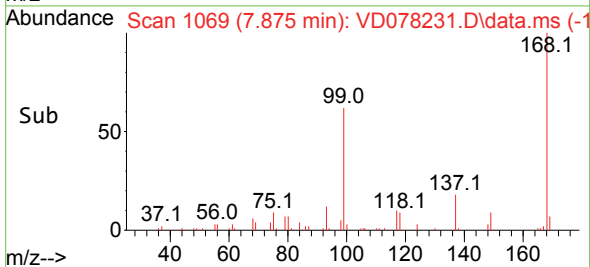
Tgt Ion:113 Resp: 87086  
 Ion Ratio Lower Upper  
 113 100  
 111 104.5 84.7 127.1  
 192 16.5 16.8 25.2#

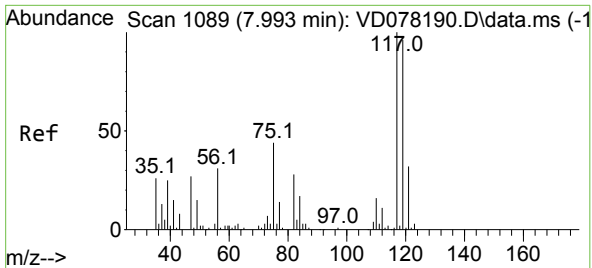


#36  
 1,1-Dichloropropene  
 Concen: 3.953 ug/l  
 RT: 7.875 min Scan# 1069  
 Delta R.T. -0.135 min  
 Lab File: VD078231.D  
 Acq: 24 Jan 2024 18:53



Tgt Ion: 75 Resp: 12773  
 Ion Ratio Lower Upper  
 75 100  
 110 8.7 19.9 59.6#  
 77 0.0 24.7 37.1#



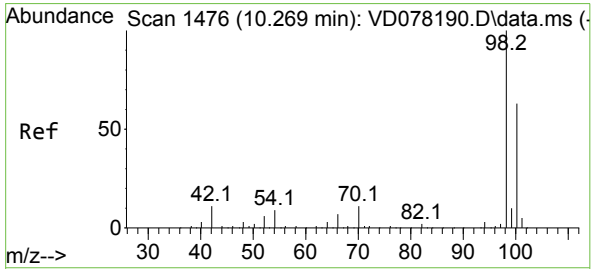
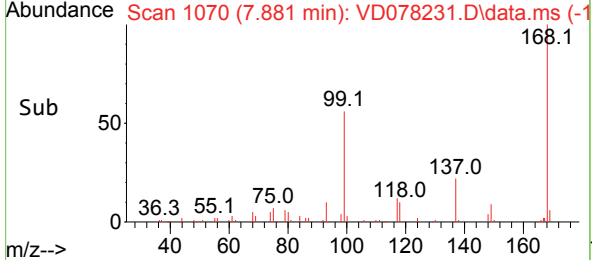
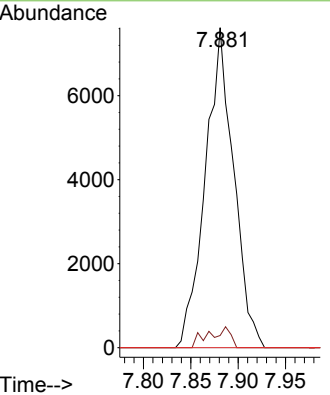
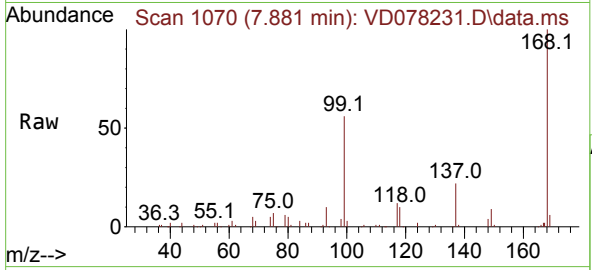


#38  
 Carbon Tetrachloride  
 Concen: 4.977 ug/l  
 RT: 7.881 min Scan# 1089  
 Delta R.T. -0.112 min  
 Lab File: VD078231.D  
 Acq: 24 Jan 2024 18:53

Instrument : MSVOA\_D  
 ClientSampleId : TP-COMP-012424

Tgt Ion:117 Resp: 15880

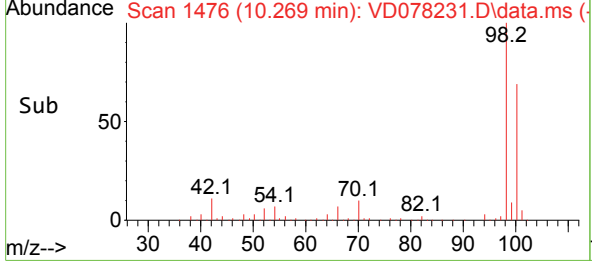
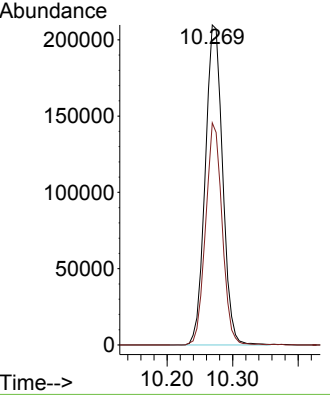
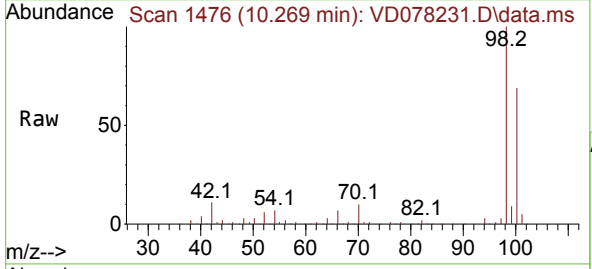
Ion	Ratio	Lower	Upper
117	100		
119	3.8	78.0	117.0#
121	0.0	24.2	36.2#



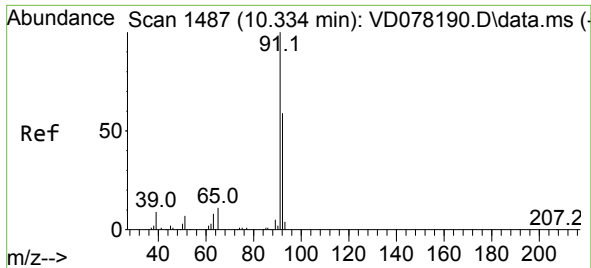
#50  
 Toluene-d8  
 Concen: 49.485 ug/l  
 RT: 10.269 min Scan# 1476  
 Delta R.T. -0.000 min  
 Lab File: VD078231.D  
 Acq: 24 Jan 2024 18:53

Tgt Ion: 98 Resp: 384968

Ion	Ratio	Lower	Upper
98	100		
100	66.0	50.3	75.5



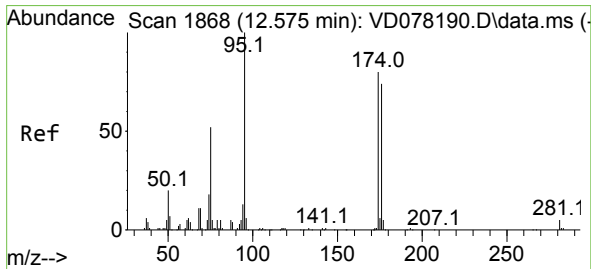
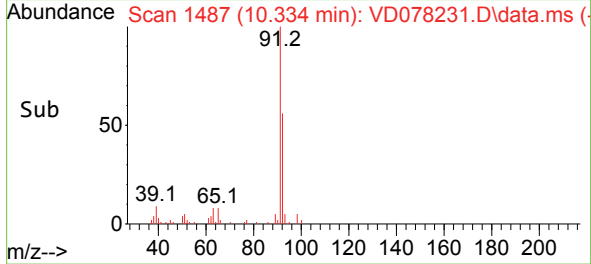
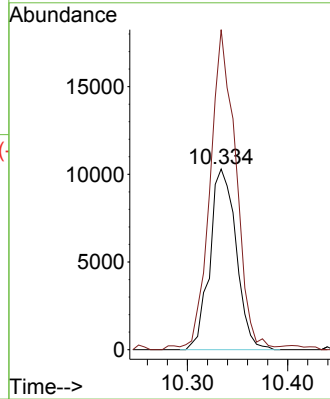
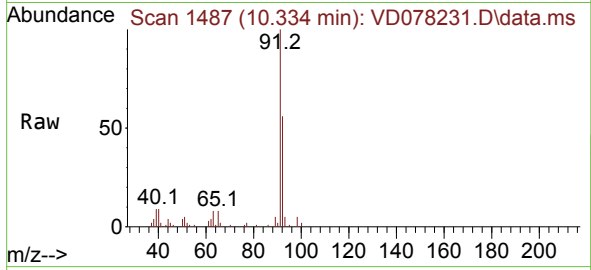




#52  
 Toluene  
 Concen: 3.230 ug/l  
 RT: 10.334 min Scan# 1487  
 Delta R.T. -0.000 min  
 Lab File: VD078231.D  
 Acq: 24 Jan 2024 18:53

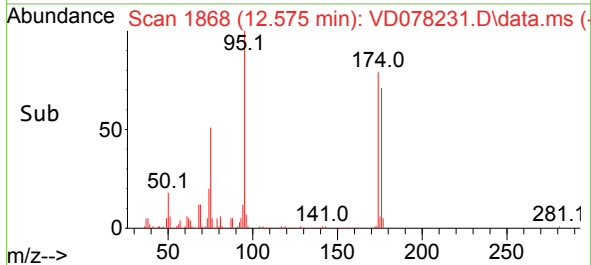
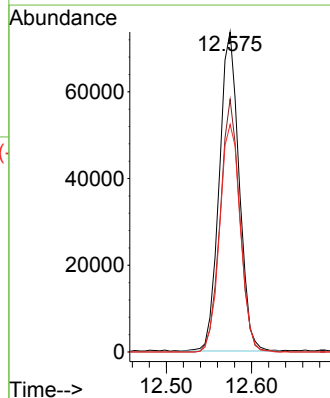
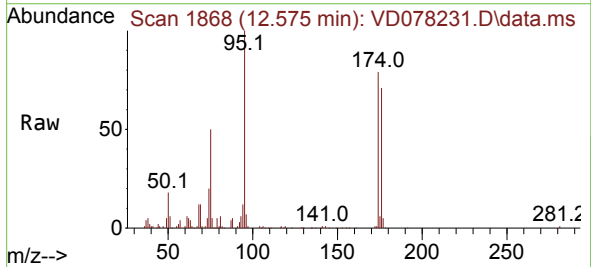
Instrument : MSVOA\_D  
 ClientSampleId : TP-COMP-012424

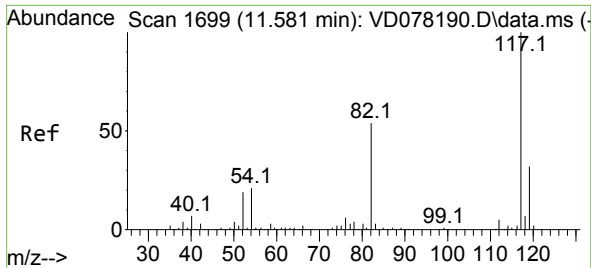
Tgt Ion: 92 Resp: 18769  
 Ion Ratio Lower Upper  
 92 100  
 91 174.5 143.0 214.4



#62  
 4-Bromofluorobenzene  
 Concen: 52.684 ug/l  
 RT: 12.575 min Scan# 1868  
 Delta R.T. -0.000 min  
 Lab File: VD078231.D  
 Acq: 24 Jan 2024 18:53

Tgt Ion: 95 Resp: 118859  
 Ion Ratio Lower Upper  
 95 100  
 174 77.8 0.0 201.8  
 176 74.3 0.0 191.8

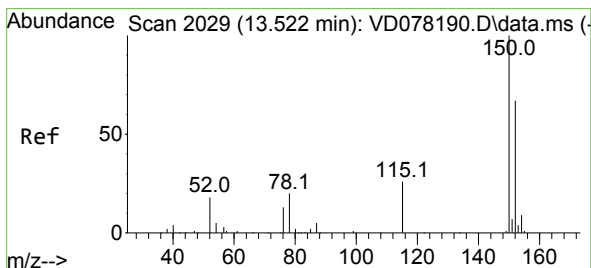
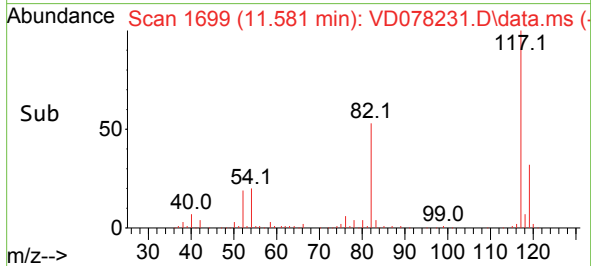
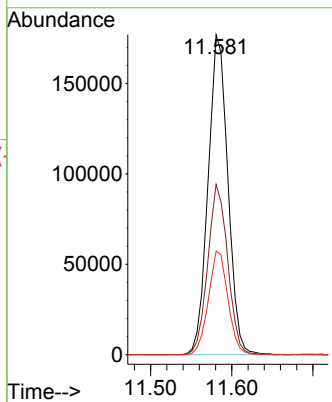
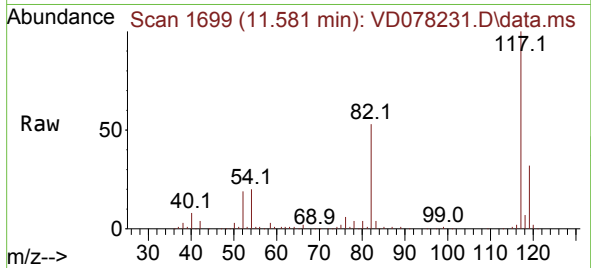




#63  
 Chlorobenzene-d5  
 Concen: 50.000 ug/l  
 RT: 11.581 min Scan# 10  
 Delta R.T. -0.000 min  
 Lab File: VD078231.D  
 Acq: 24 Jan 2024 18:53

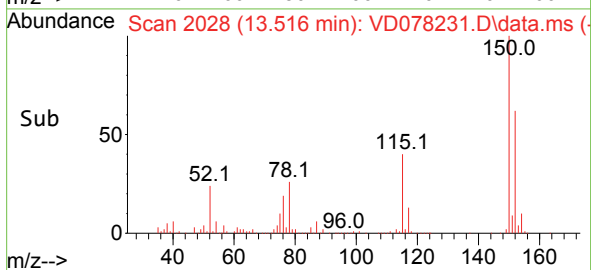
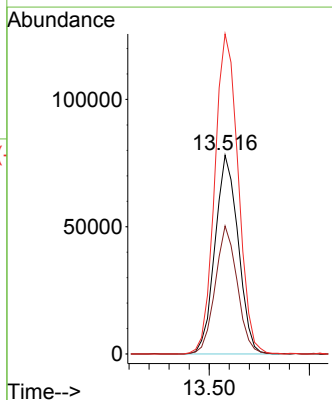
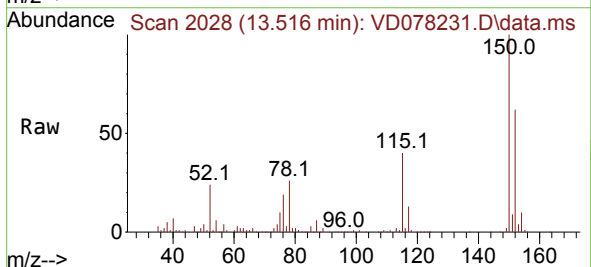
Instrument : MSVOA\_D  
 ClientSampleId : TP-COMP-012424

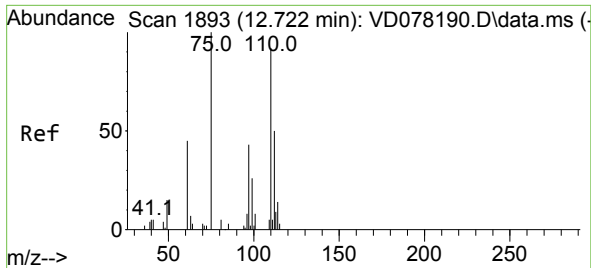
Tgt Ion	Resp	Ion Ratio	Lower	Upper
117	299519	100		
82	53.2	38.3	38.3	57.5
119	32.3	25.0	25.0	37.4



#72  
 1,4-Dichlorobenzene-d4  
 Concen: 50.000 ug/l  
 RT: 13.516 min Scan# 2028  
 Delta R.T. -0.006 min  
 Lab File: VD078231.D  
 Acq: 24 Jan 2024 18:53

Tgt Ion	Resp	Ion Ratio	Lower	Upper
152	125060	100		
115	61.5	27.1	27.1	81.3
150	163.0	0.0	0.0	353.6

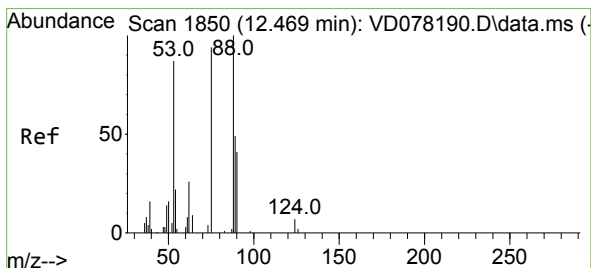
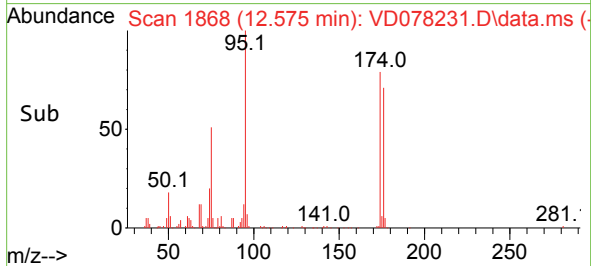
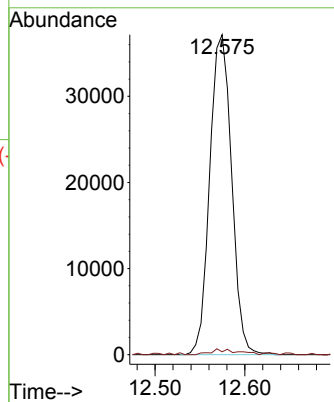
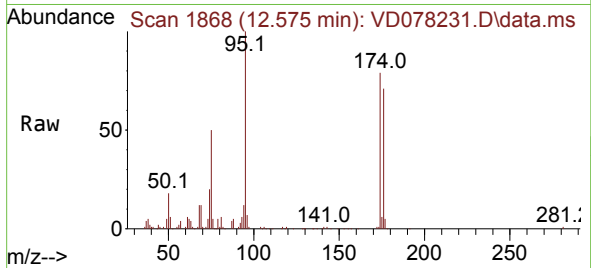




#76  
 1,2,3-Trichloropropane  
 Concen: 52.379 ug/l  
 RT: 12.575 min Scan# 1868  
 Delta R.T. -0.147 min  
 Lab File: VD078231.D  
 Acq: 24 Jan 2024 18:53

Instrument : MSVOA\_D  
 ClientSampleId : TP-COMP-012424

Tgt Ion: 75 Resp: 62828  
 Ion Ratio Lower Upper  
 75 100  
 77 2.1 0.0 0.0#



#81  
 trans-1,4-Dichloro-2-butene  
 Concen: 112.827 ug/l  
 RT: 12.575 min Scan# 1868  
 Delta R.T. 0.106 min  
 Lab File: VD078231.D  
 Acq: 24 Jan 2024 18:53

Tgt Ion: 75 Resp: 62828  
 Ion Ratio Lower Upper  
 75 100  
 53 0.0 63.0 94.4#  
 89 0.0 37.9 56.9#

