

Data Path : Z:\voasrv\HPCHEM1\MSVOA\_D\Data\VD021422\  
 Data File : VD071961.D  
 Acq On : 14 Feb 2022 17:09  
 Operator : VA/SY  
 Sample : N1521-15  
 Misc : 6.44G/5.00ml/MSVOA\_D/SOIL  
 ALS Vial : 1 Sample Multiplier: 1

Instrument :  
 MSVOA\_D  
 ClientSampleId :  
 TP3-B

Quant Time: Feb 15 00:37:25 2022  
 Quant Method : Z:\voasrv\HPCHEM1\MSVOA\_D\Method\82D012622S.M  
 Quant Title : SW846 8260  
 QLast Update : Thu Jan 27 06:04:38 2022  
 Response via : Initial Calibration

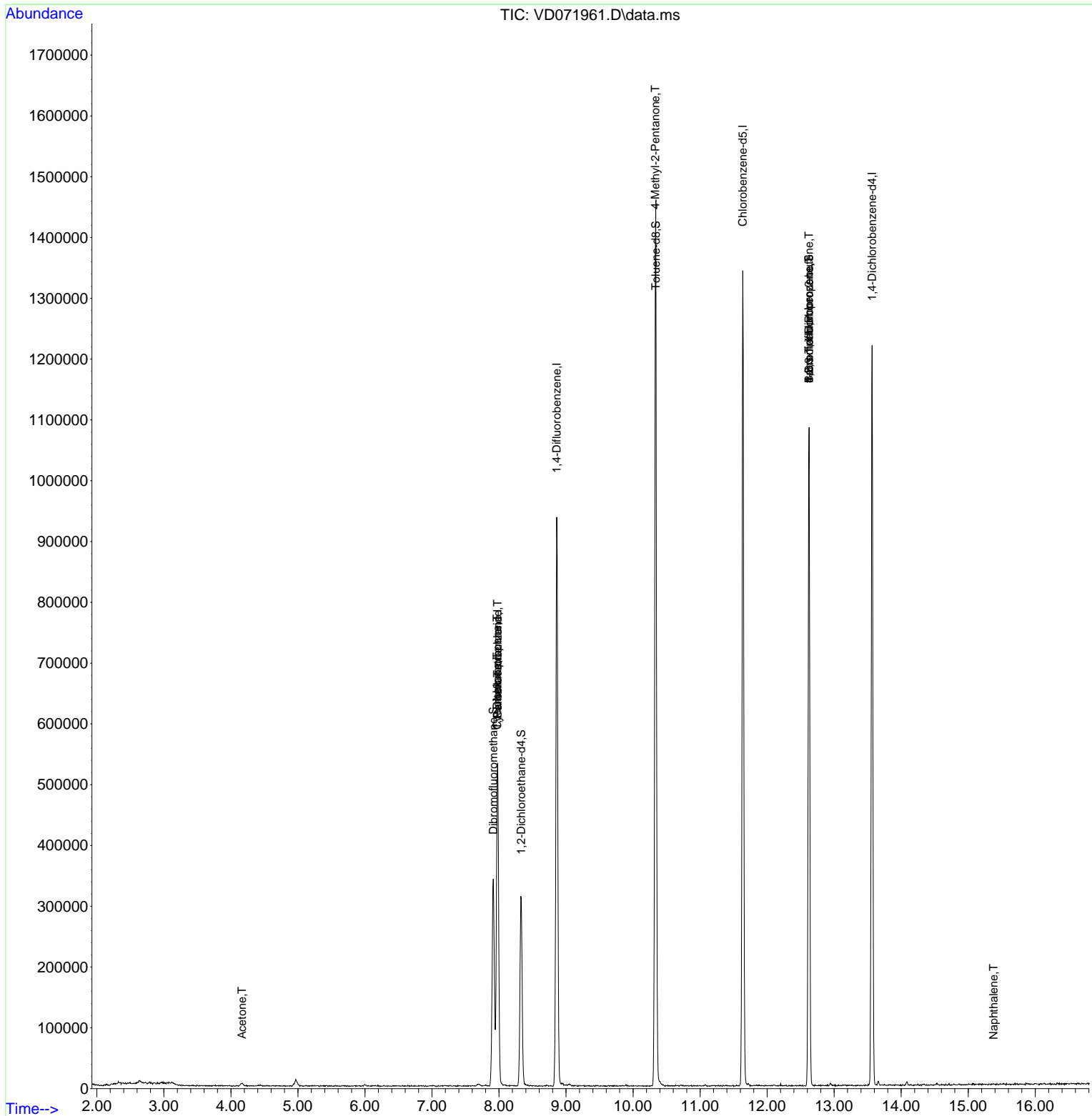
Compound	R.T.	QIon	Response	Conc	Units	Dev(Min)
-----						
Internal Standards						
1) Pentafluorobenzene	7.979	168	373299	50.000	ug/l	0.00
34) 1,4-Difluorobenzene	8.861	114	728366	50.000	ug/l	0.00
63) Chlorobenzene-d5	11.638	117	708221	50.000	ug/l	0.00
72) 1,4-Dichlorobenzene-d4	13.567	152	298660	50.000	ug/l	0.00
System Monitoring Compounds						
33) 1,2-Dichloroethane-d4	8.332	65	253519	53.731	ug/l	0.00
Spiked Amount	50.000	Range	50 - 163	Recovery	=	107.460%
35) Dibromofluoromethane	7.914	113	238403	49.794	ug/l	0.00
Spiked Amount	50.000	Range	54 - 147	Recovery	=	99.580%
50) Toluene-d8	10.338	98	934745	52.277	ug/l	0.00
Spiked Amount	50.000	Range	49 - 140	Recovery	=	104.560%
62) 4-Bromofluorobenzene	12.626	95	307386	49.228	ug/l	0.00
Spiked Amount	50.000	Range	25 - 144	Recovery	=	98.460%
Target Compounds						
					Qvalue	
11) Tert butyl alcohol	5.214	59	75	Below Cal	#	74
16) Acetone	4.167	43	8428	6.525	ug/l #	84
20) Methylene Chloride	4.967	84	6642	Below Cal	#	78
31) Cyclohexane	7.973	56	10973	1.218	ug/l #	28
36) 1,1-Dichloropropene	7.973	75	35862	4.364	ug/l #	52
38) Carbon Tetrachloride	7.979	117	41550	5.113	ug/l #	17
51) 4-Methyl-2-Pentanone	10.332	43	5441	1.514	ug/l #	1
71) Bromoform	12.626	173	3386	1.163	ug/l #	1
76) 1,2,3-Trichloropropane	12.626	75	176189	55.977	ug/l #	100
81) trans-1,4-Dichloro-2-b...	12.626	75	176189	137.635	ug/l #	7
95) Naphthalene	15.379	128	135	1.466	ug/l #	36
-----						

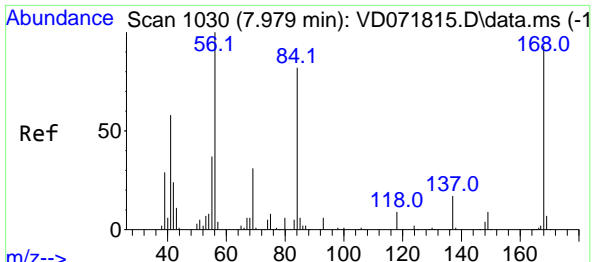
(#) = qualifier out of range (m) = manual integration (+) = signals summed

Data Path : Z:\voasrv\HPCHEM1\MSVOA\_D\Data\VD021422\  
 Data File : VD071961.D  
 Acq On : 14 Feb 2022 17:09  
 Operator : VA/SY  
 Sample : N1521-15  
 Misc : 6.44G/5.00ml/MSVOA\_D/SOIL  
 ALS Vial : 1 Sample Multiplier: 1

Instrument :  
 MSVOA\_D  
 ClientSampleId :  
 TP3-B

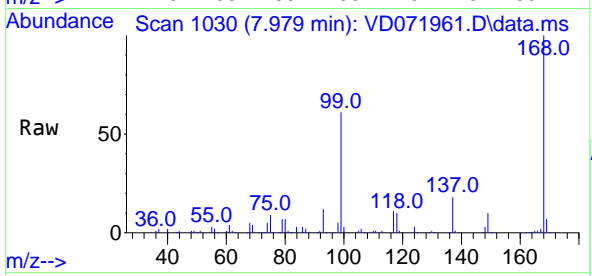
Quant Time: Feb 15 00:37:25 2022  
 Quant Method : Z:\voasrv\HPCHEM1\MSVOA\_D\Method\82D012622S.M  
 Quant Title : SW846 8260  
 QLast Update : Thu Jan 27 06:04:38 2022  
 Response via : Initial Calibration



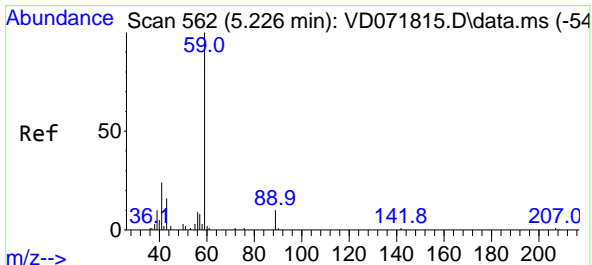
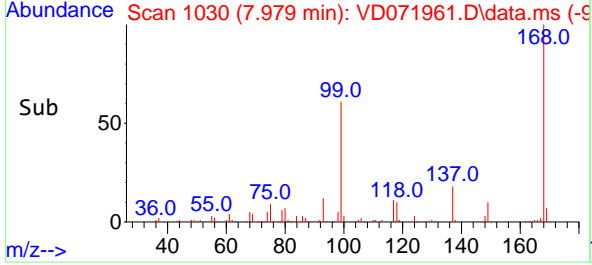
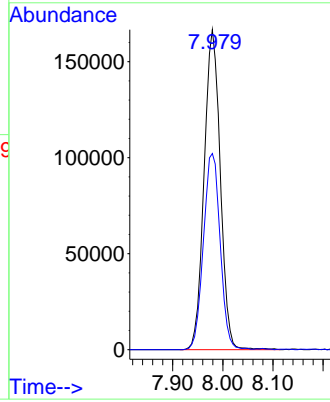


#1  
 Pentafluorobenzene  
 Concen: 50.000 ug/l  
 RT: 7.979 min Scan# 10  
 Delta R.T. 0.000 min  
 Lab File: VD071961.D  
 Acq: 14 Feb 2022 17:09

Instrument :  
 MSVOA\_D  
 ClientSampleId :  
 TP3-B

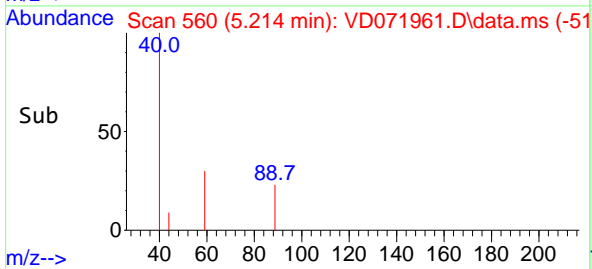
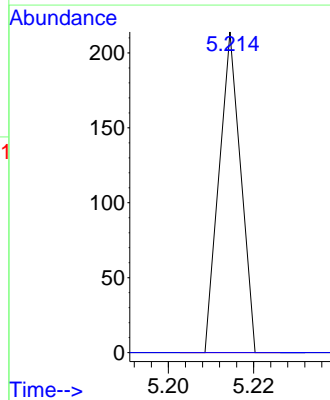
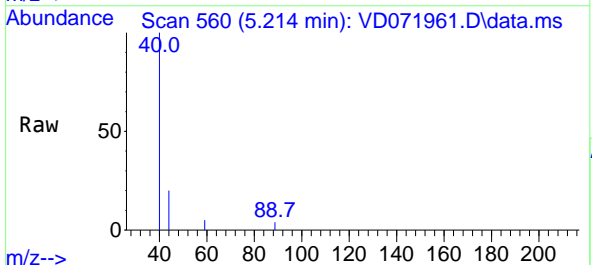


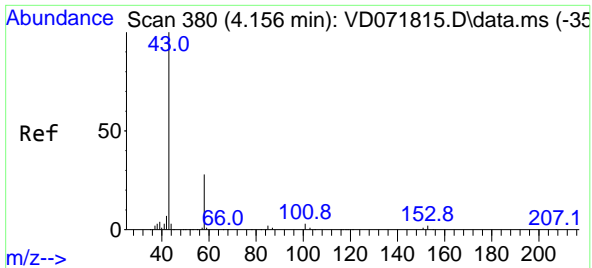
Tgt Ion:168 Resp: 373299  
 Ion Ratio Lower Upper  
 168 100  
 99 61.3 49.8 74.6



#11  
 Tert butyl alcohol  
 Concen: Below Cal  
 RT: 5.214 min Scan# 560  
 Delta R.T. -0.006 min  
 Lab File: VD071961.D  
 Acq: 14 Feb 2022 17:09

Tgt Ion: 59 Resp: 75  
 Ion Ratio Lower Upper  
 59 100  
 57 0.0 7.8 11.6#

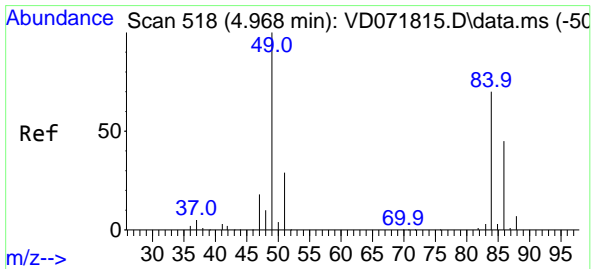
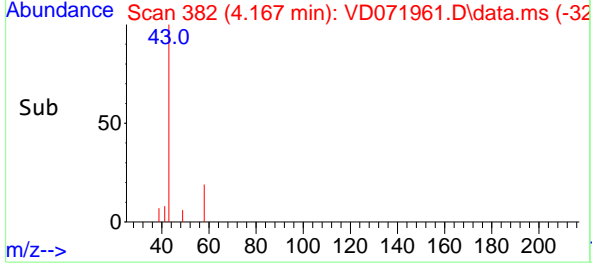
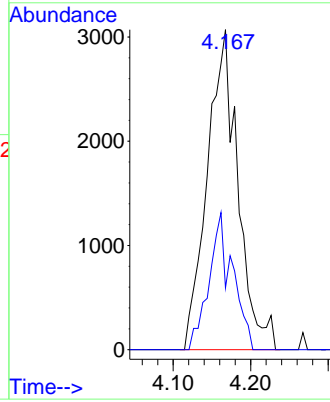
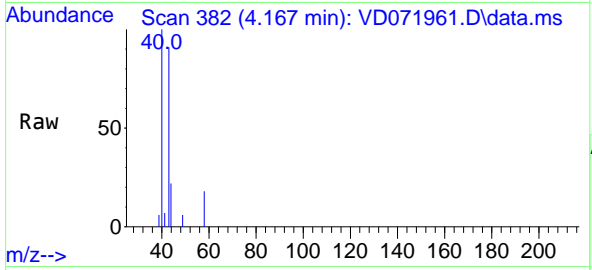




#16  
 Acetone  
 Concen: 6.525 ug/l  
 RT: 4.167 min Scan# 380  
 Delta R.T. 0.012 min  
 Lab File: VD071961.D  
 Acq: 14 Feb 2022 17:09

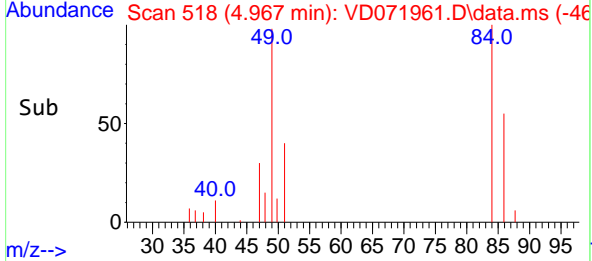
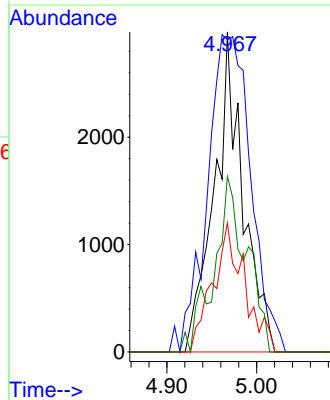
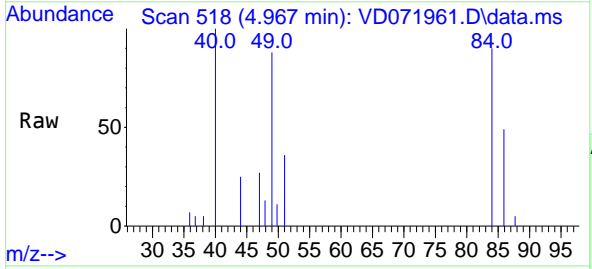
Instrument :  
 MSVOA\_D  
 ClientSampleId :  
 TP3-B

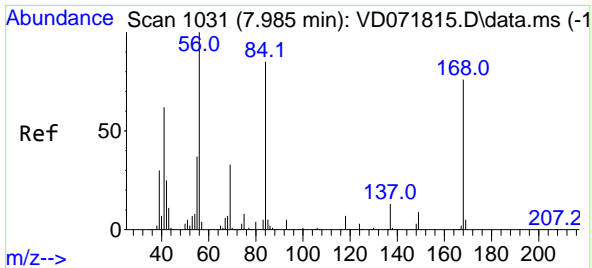
Tgt Ion: 43 Resp: 8428  
 Ion Ratio Lower Upper  
 43 100  
 58 19.3 22.1 33.1#



#20  
 Methylene Chloride  
 Concen: Below Cal  
 RT: 4.967 min Scan# 518  
 Delta R.T. -0.000 min  
 Lab File: VD071961.D  
 Acq: 14 Feb 2022 17:09

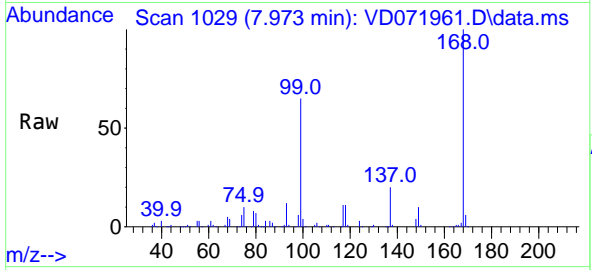
Tgt Ion: 84 Resp: 6642  
 Ion Ratio Lower Upper  
 84 100  
 49 97.6 112.8 169.2#  
 51 40.3 32.6 48.8  
 86 54.9 47.9 71.9



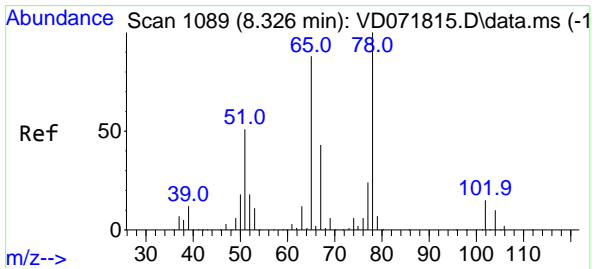
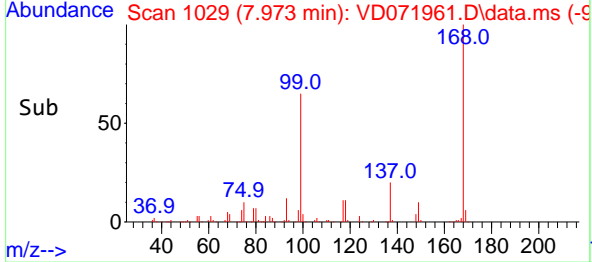
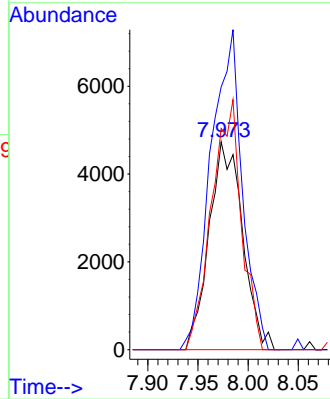


#31  
 Cyclohexane  
 Concen: 1.218 ug/l  
 RT: 7.973 min Scan# 10973  
 Delta R.T. -0.012 min  
 Lab File: VD071961.D  
 Acq: 14 Feb 2022 17:09

Instrument : MSVOA\_D  
 ClientSampleId : TP3-B

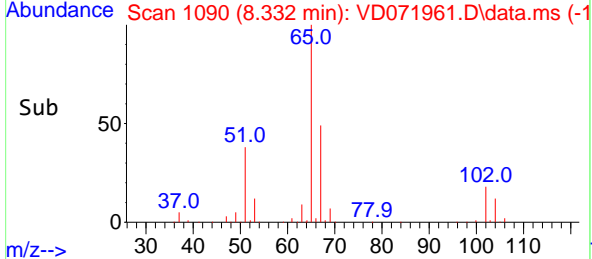
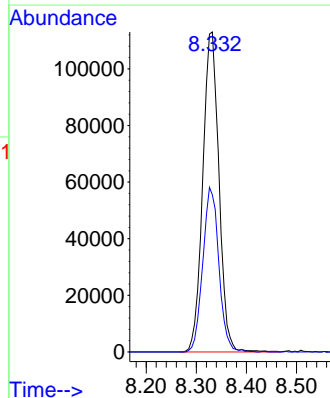
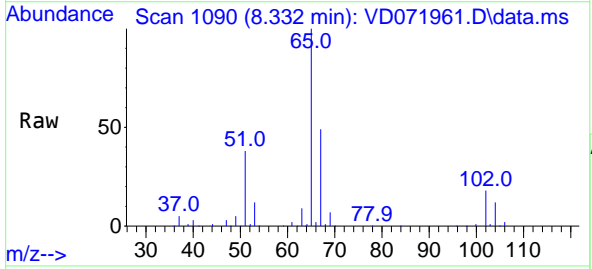


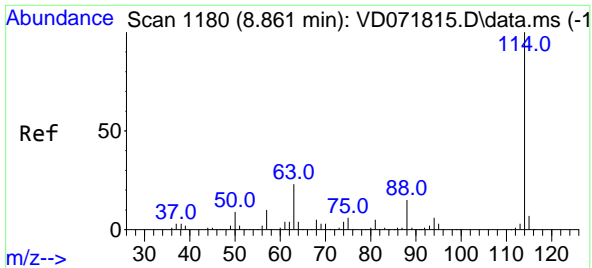
Tgt Ion: 56 Resp: 10973  
 Ion Ratio Lower Upper  
 56 100  
 69 126.4 25.4 38.2#  
 84 106.4 63.0 94.4#



#33  
 1,2-Dichloroethane-d4  
 Concen: 53.731 ug/l  
 RT: 8.332 min Scan# 1090  
 Delta R.T. 0.006 min  
 Lab File: VD071961.D  
 Acq: 14 Feb 2022 17:09

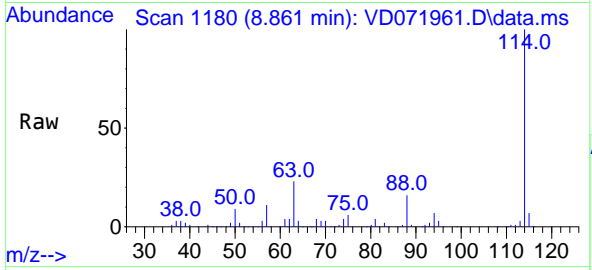
Tgt Ion: 65 Resp: 253519  
 Ion Ratio Lower Upper  
 65 100  
 67 51.0 0.0 101.4





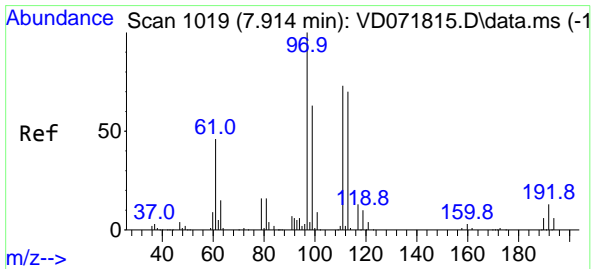
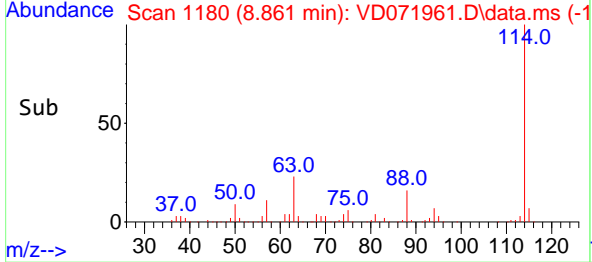
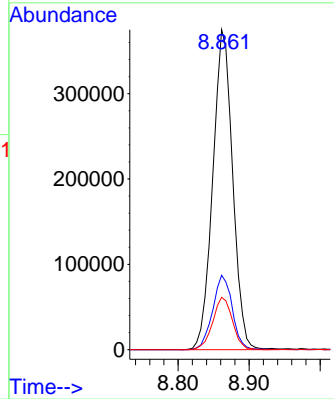
#34  
 1,4-Difluorobenzene  
 Concen: 50.000 ug/l  
 RT: 8.861 min Scan# 1180  
 Delta R.T. -0.000 min  
 Lab File: VD071961.D  
 Acq: 14 Feb 2022 17:09

Instrument : MSVOA\_D  
 ClientSampleId : TP3-B

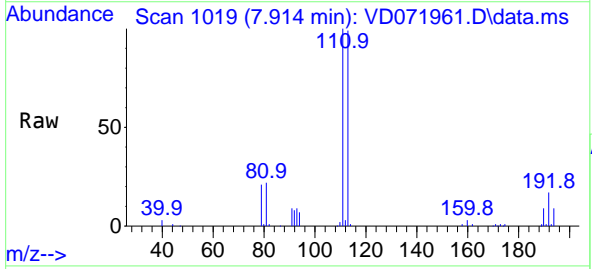


Tgt Ion:114 Resp: 728366

Ion	Ratio	Lower	Upper
114	100		
63	23.3	0.0	46.6
88	16.4	0.0	33.2

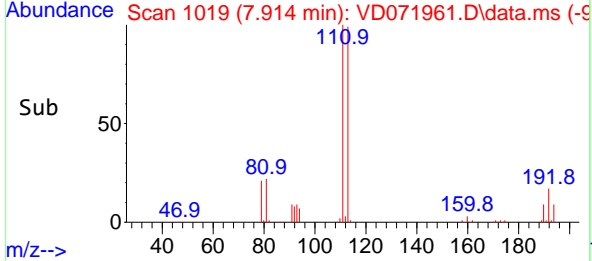
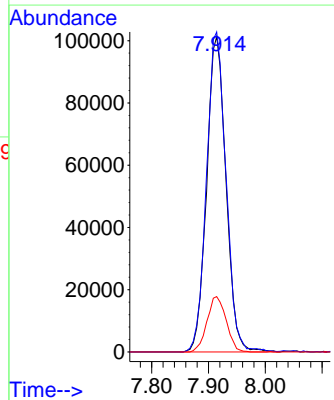


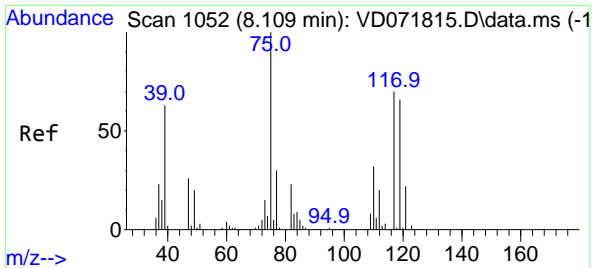
#35  
 Dibromofluoromethane  
 Concen: 49.794 ug/l  
 RT: 7.914 min Scan# 1019  
 Delta R.T. -0.000 min  
 Lab File: VD071961.D  
 Acq: 14 Feb 2022 17:09



Tgt Ion:113 Resp: 238403

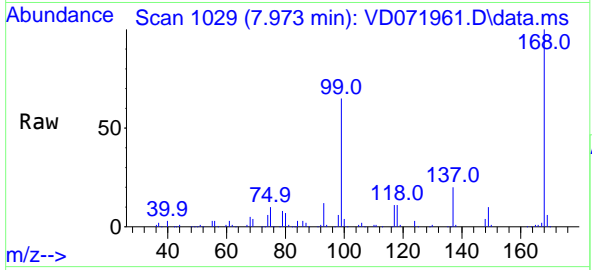
Ion	Ratio	Lower	Upper
113	100		
111	102.6	83.8	125.6
192	17.5	14.6	21.8



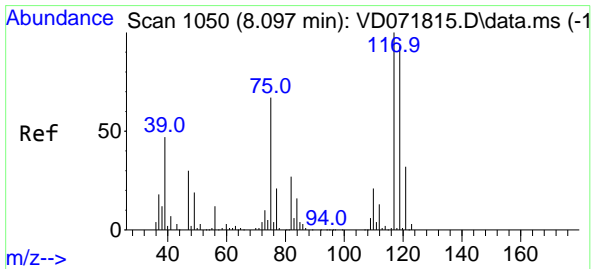
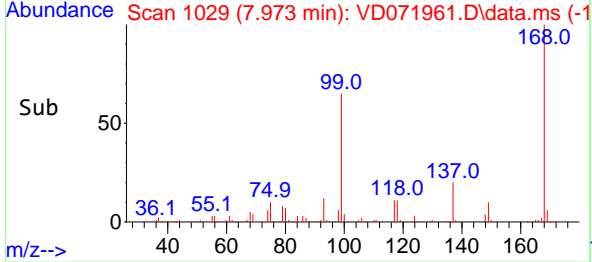
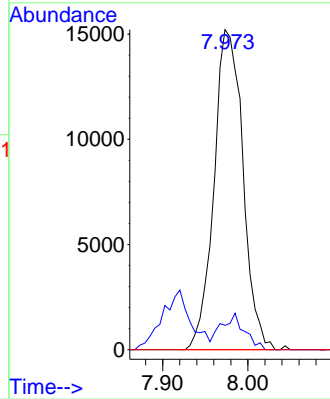


#36  
 1,1-Dichloropropene  
 Concen: 4.364 ug/l  
 RT: 7.973 min Scan# 1029  
 Delta R.T. -0.141 min  
 Lab File: VD071961.D  
 Acq: 14 Feb 2022 17:09

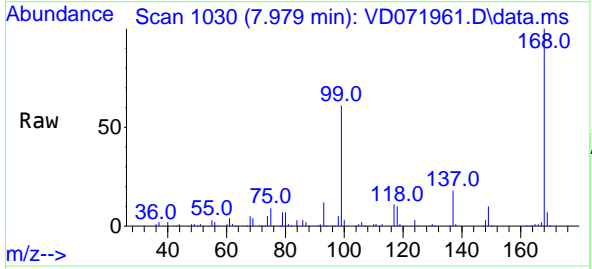
Instrument : MSVOA\_D  
 ClientSampleId : TP3-B



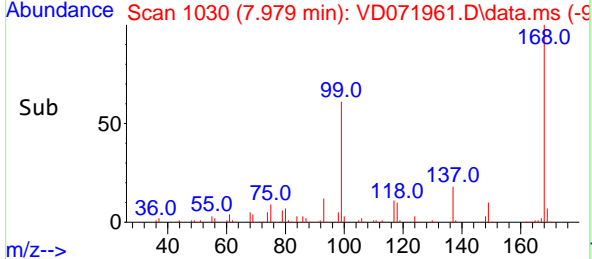
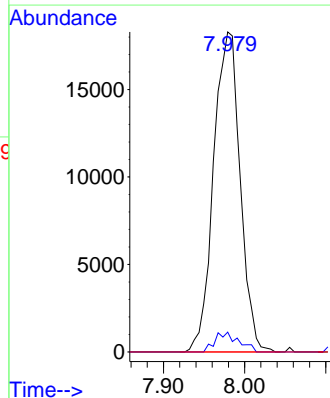
Tgt Ion: 75 Resp: 35862  
 Ion Ratio Lower Upper  
 75 100  
 110 9.2 16.4 49.1#  
 77 0.0 24.2 36.2#

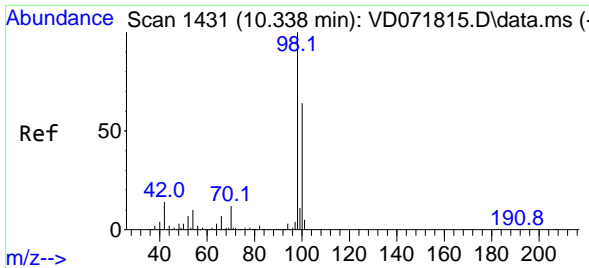


#38  
 Carbon Tetrachloride  
 Concen: 5.113 ug/l  
 RT: 7.979 min Scan# 1030  
 Delta R.T. -0.118 min  
 Lab File: VD071961.D  
 Acq: 14 Feb 2022 17:09



Tgt Ion: 117 Resp: 41550  
 Ion Ratio Lower Upper  
 117 100  
 119 6.2 75.8 113.6#  
 121 0.0 24.5 36.7#

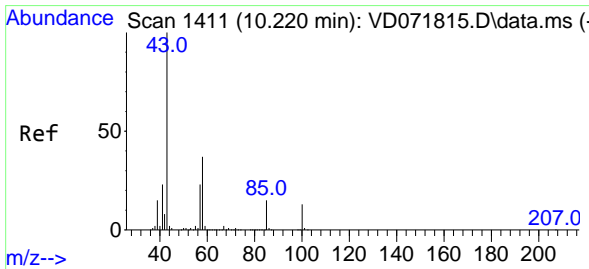
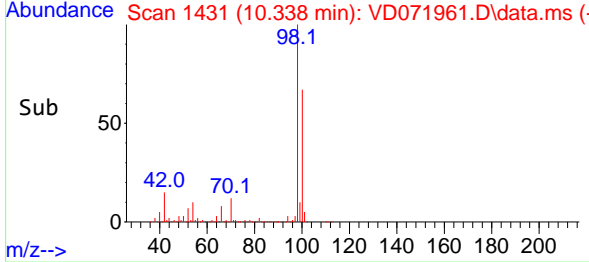
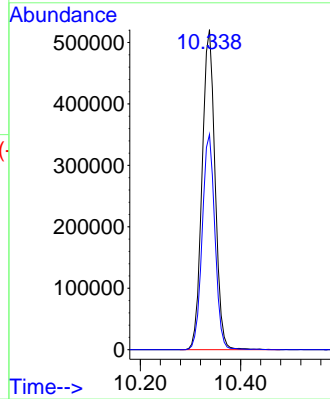
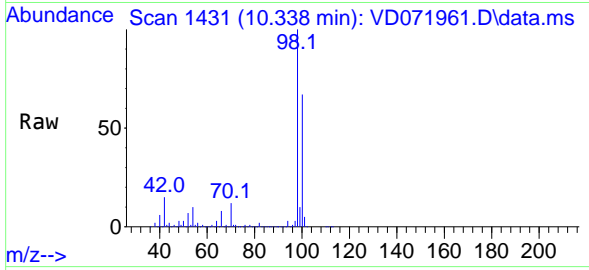




#50  
 Toluene-d8  
 Concen: 52.277 ug/l  
 RT: 10.338 min Scan# 1430  
 Delta R.T. -0.000 min  
 Lab File: VD071961.D  
 Acq: 14 Feb 2022 17:09

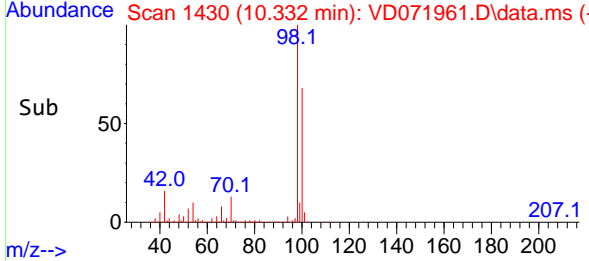
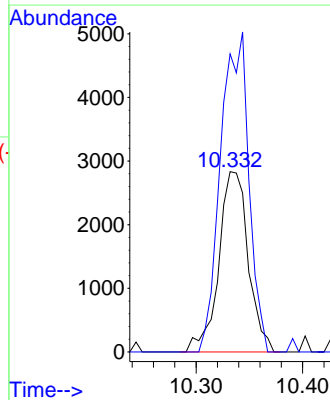
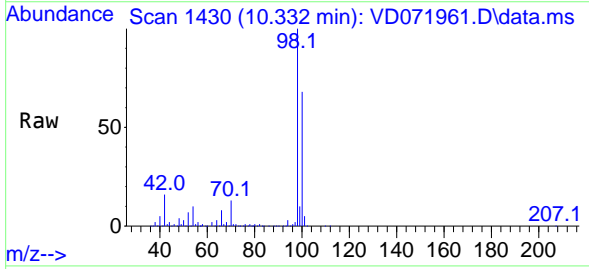
Instrument : MSVOA\_D  
 ClientSampleId : TP3-B

Tgt Ion: 98 Resp: 934745  
 Ion Ratio Lower Upper  
 98 100  
 100 65.9 52.4 78.6

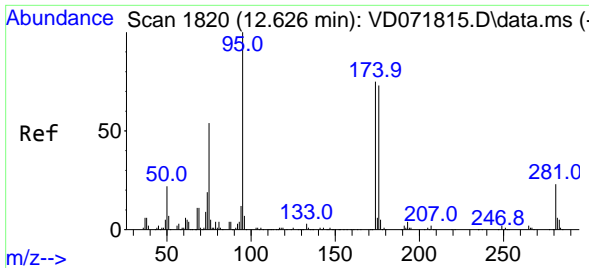


#51  
 4-Methyl-2-Pentanone  
 Concen: 1.514 ug/l  
 RT: 10.332 min Scan# 1430  
 Delta R.T. 0.106 min  
 Lab File: VD071961.D  
 Acq: 14 Feb 2022 17:09

Tgt Ion: 43 Resp: 5441  
 Ion Ratio Lower Upper  
 43 100  
 58 169.5 28.6 43.0#

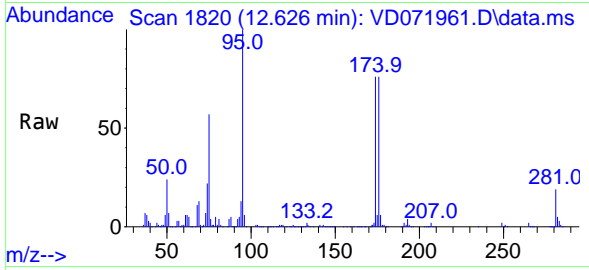






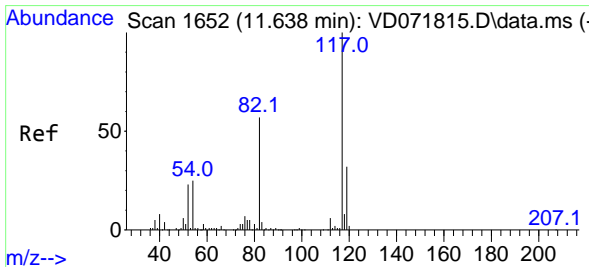
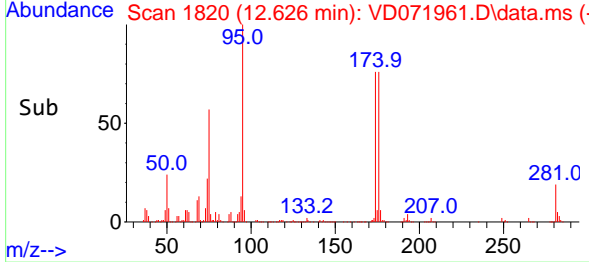
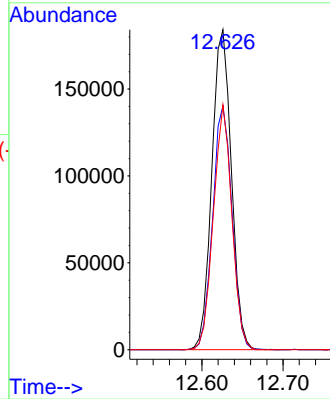
#62  
 4-Bromofluorobenzene  
 Concen: 49.228 ug/l  
 RT: 12.626 min Scan# 1820  
 Delta R.T. -0.000 min  
 Lab File: VD071961.D  
 Acq: 14 Feb 2022 17:09

Instrument : MSVOA\_D  
 ClientSampleId : TP3-B



Tgt Ion: 95 Resp: 307386

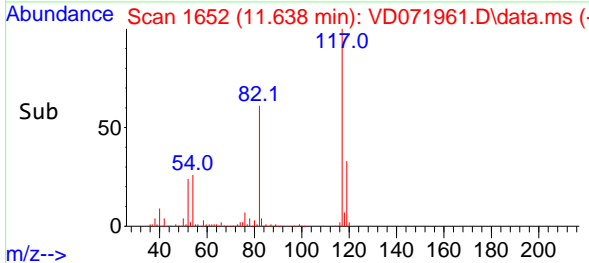
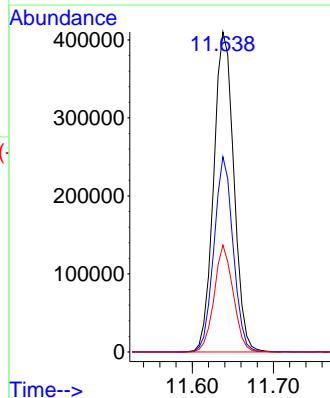
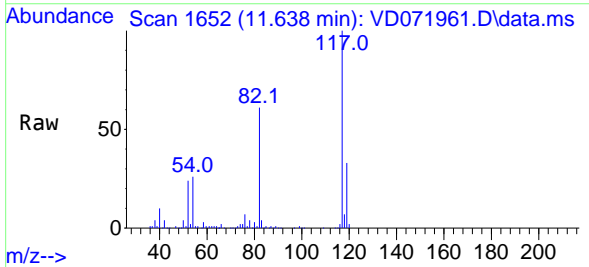
Ion	Ratio	Lower	Upper
95	100		
174	75.7	0.0	152.8
176	72.5	0.0	145.4

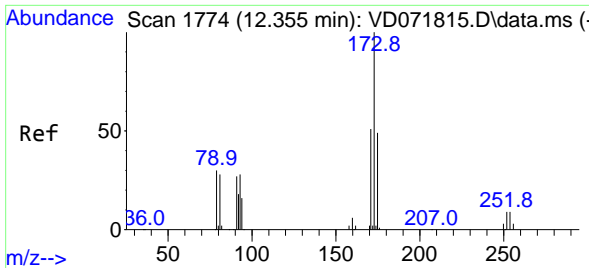


#63  
 Chlorobenzene-d5  
 Concen: 50.000 ug/l  
 RT: 11.638 min Scan# 1652  
 Delta R.T. -0.000 min  
 Lab File: VD071961.D  
 Acq: 14 Feb 2022 17:09

Tgt Ion: 117 Resp: 708221

Ion	Ratio	Lower	Upper
117	100		
82	61.0	45.3	67.9
119	33.4	26.6	40.0

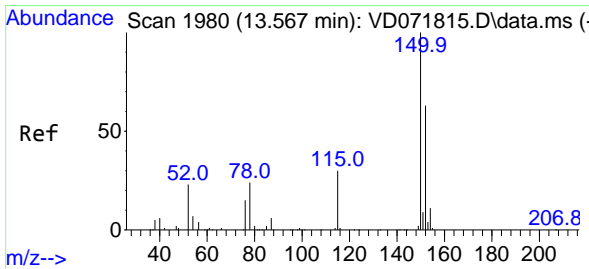
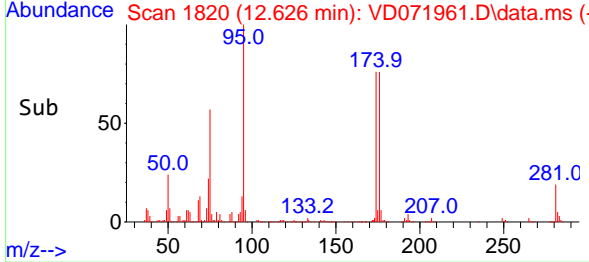
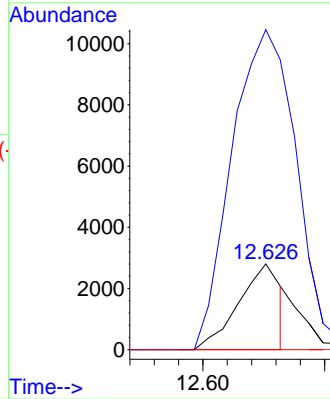
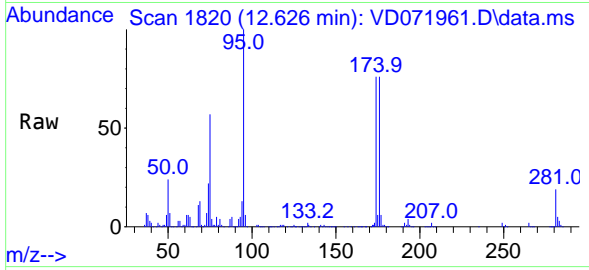




#71  
 Bromoform  
 Concen: 1.163 ug/l  
 RT: 12.626 min Scan# 1820  
 Delta R.T. 0.271 min  
 Lab File: VD071961.D  
 Acq: 14 Feb 2022 17:09

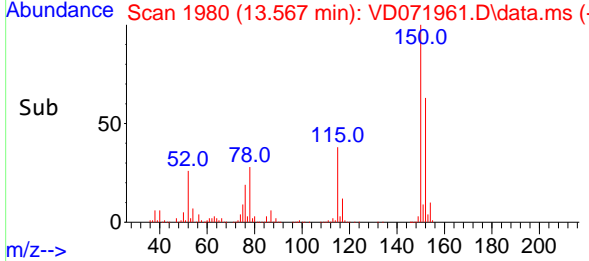
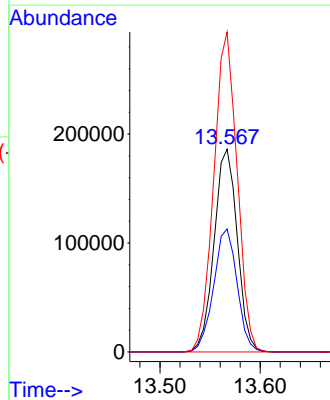
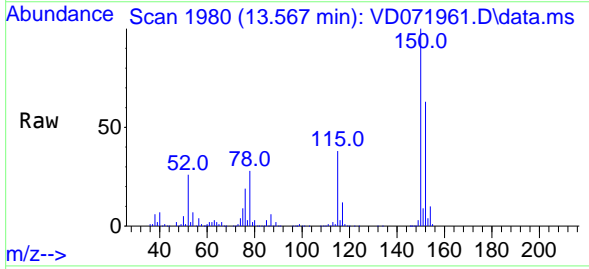
Instrument :  
 MSVOA\_D  
 ClientSampleId :  
 TP3-B

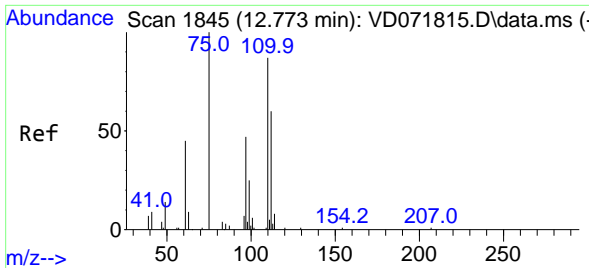
Tgt Ion:173 Resp: 3386  
 Ion Ratio Lower Upper  
 173 100  
 175 447.7 23.9 71.8#  
 254 0.0 0.0 0.0



#72  
 1,4-Dichlorobenzene-d4  
 Concen: 50.000 ug/l  
 RT: 13.567 min Scan# 1980  
 Delta R.T. -0.000 min  
 Lab File: VD071961.D  
 Acq: 14 Feb 2022 17:09

Tgt Ion:152 Resp: 298660  
 Ion Ratio Lower Upper  
 152 100  
 115 61.6 31.3 93.8  
 150 159.1 0.0 348.6

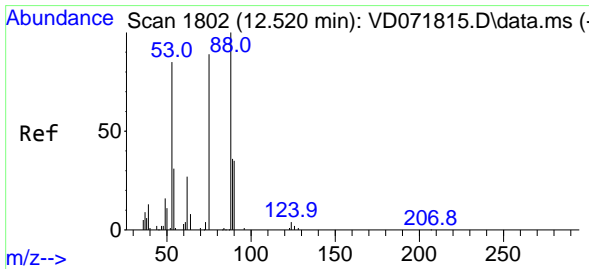
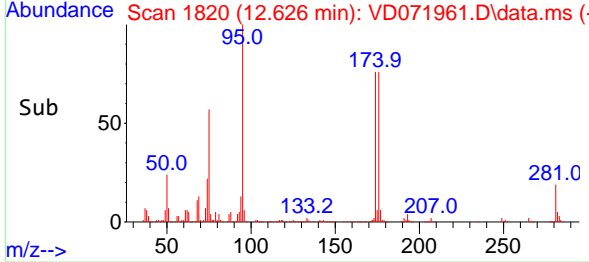
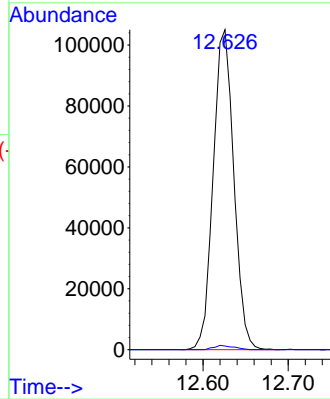
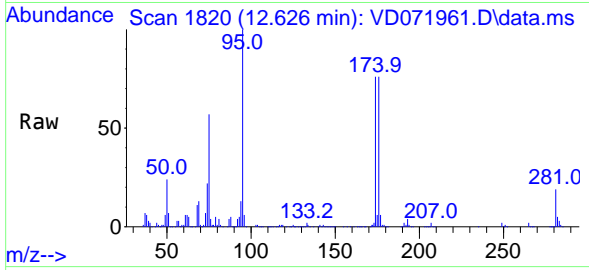




#76  
 1,2,3-Trichloropropane  
 Concen: 55.977 ug/l  
 RT: 12.626 min Scan# 1820  
 Delta R.T. -0.147 min  
 Lab File: VD071961.D  
 Acq: 14 Feb 2022 17:09

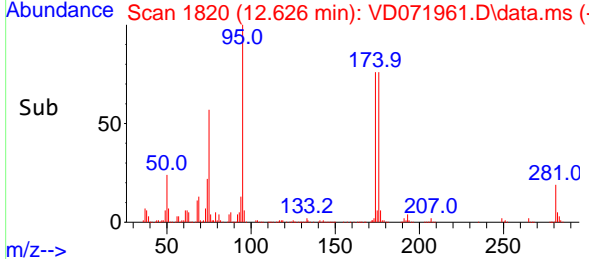
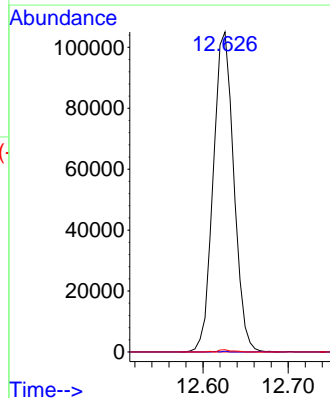
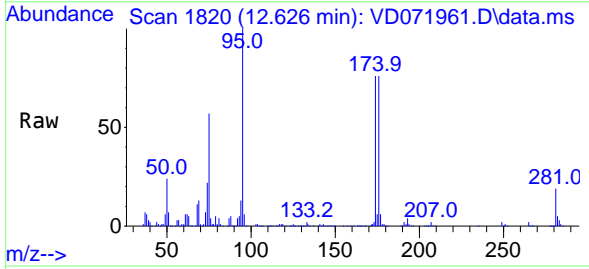
Instrument : MSVOA\_D  
 ClientSampleId : TP3-B

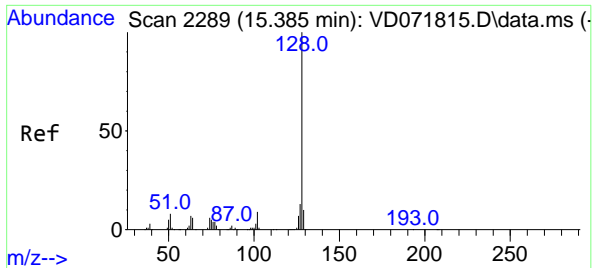
Tgt Ion: 75 Resp: 176189  
 Ion Ratio Lower Upper  
 75 100  
 77 1.3 0.0 0.0#



#81  
 trans-1,4-Dichloro-2-butene  
 Concen: 137.635 ug/l  
 RT: 12.626 min Scan# 1820  
 Delta R.T. 0.106 min  
 Lab File: VD071961.D  
 Acq: 14 Feb 2022 17:09

Tgt Ion: 75 Resp: 176189  
 Ion Ratio Lower Upper  
 75 100  
 53 0.1 86.5 129.7#  
 89 0.5 33.9 50.9#





#95  
 Naphthalene  
 Concen: 1.466 ug/l  
 RT: 15.379 min Scan# 21  
 Delta R.T. -0.006 min  
 Lab File: VD071961.D  
 Acq: 14 Feb 2022 17:09

Instrument : MSVOA\_D  
 ClientSampleId : TP3-B

Tgt Ion:128 Resp: 135

Ion	Ratio	Lower	Upper
128	100		
127	49.6	10.3	15.5#
129	0.0	8.4	12.6#

