

Data Path : Z:\voasrv\HPCHEM1\MSVOA_D\Data\VD021422\
 Data File : VD071962.D
 Acq On : 14 Feb 2022 17:37
 Operator : VA/SY
 Sample : N1521-17
 Misc : 5.86G/5.00ml/MSVOA_D/SOIL
 ALS Vial : 1 Sample Multiplier: 1

Instrument :
 MSVOA_D
 ClientSampleId :
 TP3-C

Quant Time: Feb 15 00:37:43 2022
 Quant Method : Z:\voasrv\HPCHEM1\MSVOA_D\Method\82D012622S.M
 Quant Title : SW846 8260
 QLast Update : Thu Jan 27 06:04:38 2022
 Response via : Initial Calibration

Compound	R.T.	QIon	Response	Conc	Units	Dev(Min)

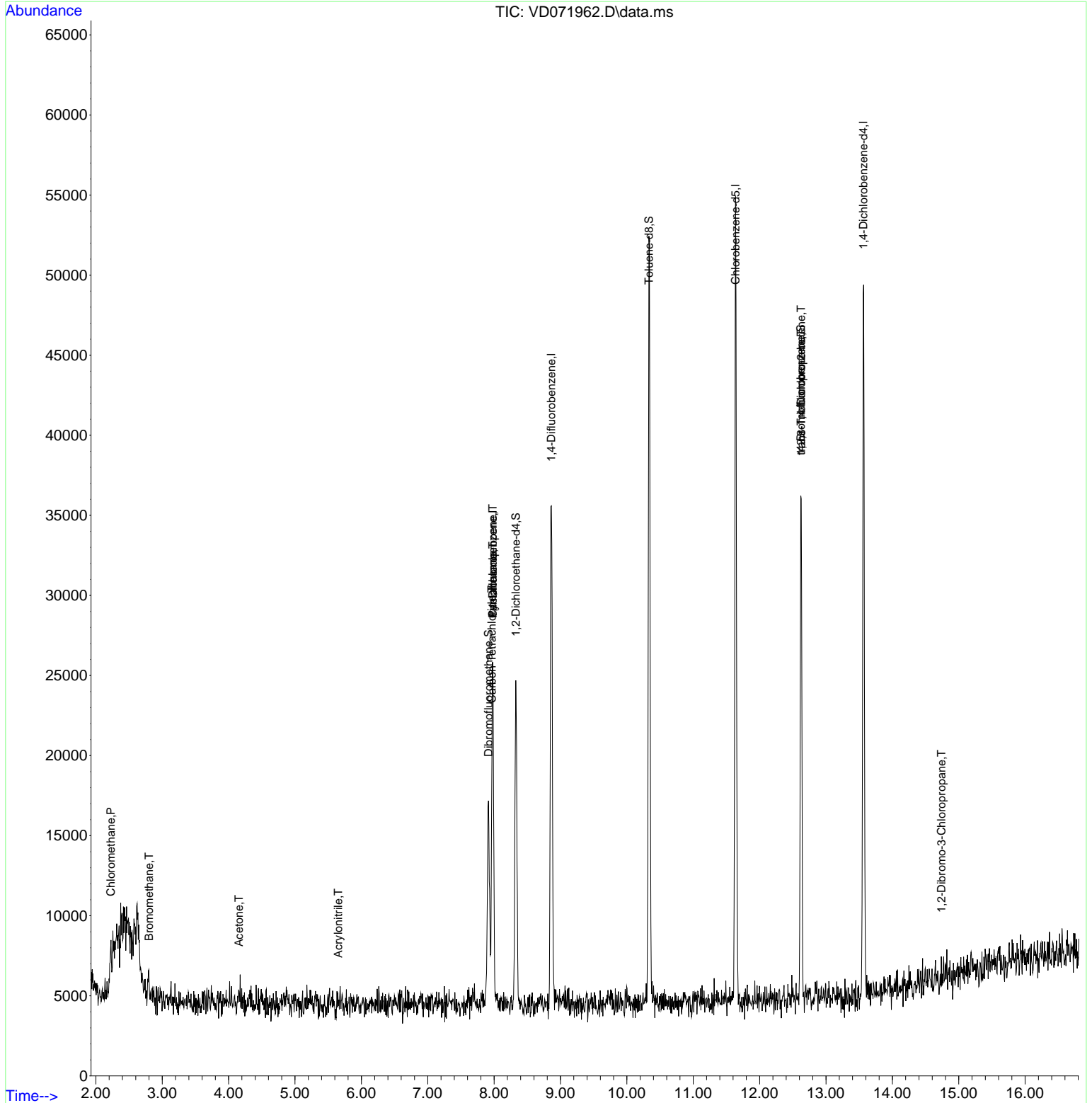
Internal Standards						
1) Pentafluorobenzene	7.979	168	15049	50.000	ug/l	0.00
34) 1,4-Difluorobenzene	8.861	114	26030	50.000	ug/l	0.00
63) Chlorobenzene-d5	11.638	117	27210	50.000	ug/l	0.00
72) 1,4-Dichlorobenzene-d4	13.561	152	10798	50.000	ug/l	0.00
System Monitoring Compounds						
33) 1,2-Dichloroethane-d4	8.326	65	15779	82.955	ug/l	0.00
Spiked Amount	50.000	Range	50 - 163	Recovery	=	165.900%#
35) Dibromofluoromethane	7.914	113	9213	53.845	ug/l	0.00
Spiked Amount	50.000	Range	54 - 147	Recovery	=	107.680%
50) Toluene-d8	10.332	98	32342	50.613	ug/l	0.00
Spiked Amount	50.000	Range	49 - 140	Recovery	=	101.220%
62) 4-Bromofluorobenzene	12.620	95	10523	47.156	ug/l	0.00
Spiked Amount	50.000	Range	25 - 144	Recovery	=	94.320%
Target Compounds						
					Qvalue	
3) Chloromethane	2.227	50	471	2.204	ug/l #	40
5) Bromomethane	2.803	94	511	3.462	ug/l #	74
11) Tert butyl alcohol	5.279	59	79	Below Cal	#	74
15) Acrylonitrile	5.650	53	54	1.256	ug/l #	17
16) Acetone	4.156	43	418	8.028	ug/l #	47
20) Methylene Chloride	4.962	84	191	Below Cal	#	51
31) Cyclohexane	7.979	56	388	1.068	ug/l #	60
36) 1,1-Dichloropropene	7.979	75	1098	3.739	ug/l #	43
38) Carbon Tetrachloride	7.967	117	2138	7.362	ug/l #	13
76) 1,2,3-Trichloropropane	12.626	75	6087	53.490	ug/l #	100
81) trans-1,4-Dichloro-2-b...	12.626	75	6087	131.519	ug/l #	7
92) 1,2-Dibromo-3-Chloropr...	14.738	75	58	2.263	ug/l #	6

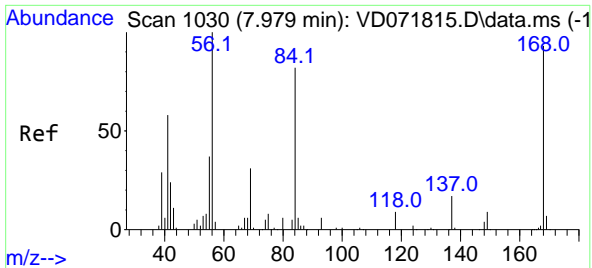
(#) = qualifier out of range (m) = manual integration (+) = signals summed

Data Path : Z:\voasrv\HPCHEM1\MSVOA_D\Data\VD021422\
 Data File : VD071962.D
 Acq On : 14 Feb 2022 17:37
 Operator : VA/SY
 Sample : N1521-17
 Misc : 5.86G/5.00ml/MSVOA_D/SOIL
 ALS Vial : 1 Sample Multiplier: 1

Instrument :
 MSVOA_D
ClientSampleId :
 TP3-C

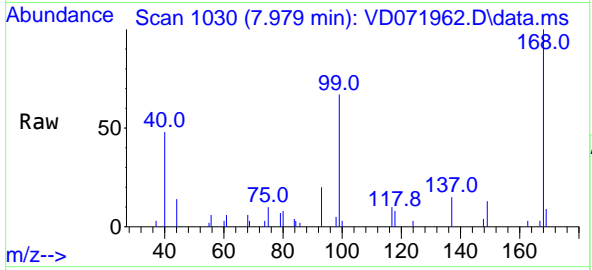
Quant Time: Feb 15 00:37:43 2022
 Quant Method : Z:\voasrv\HPCHEM1\MSVOA_D\Method\82D012622S.M
 Quant Title : SW846 8260
 QLast Update : Thu Jan 27 06:04:38 2022
 Response via : Initial Calibration



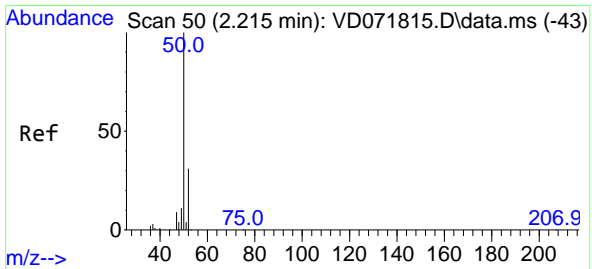
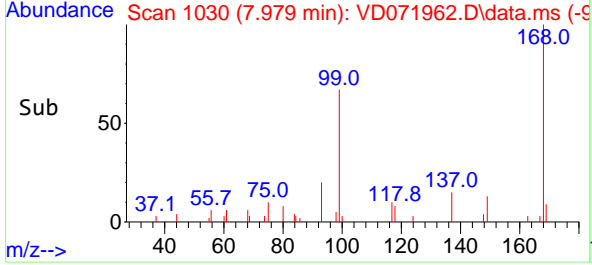
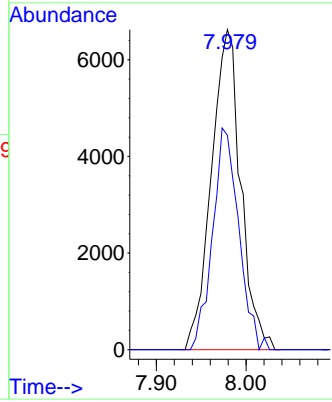


#1
 Pentafluorobenzene
 Concen: 50.000 ug/l
 RT: 7.979 min Scan# 10
 Delta R.T. 0.000 min
 Lab File: VD071962.D
 Acq: 14 Feb 2022 17:37

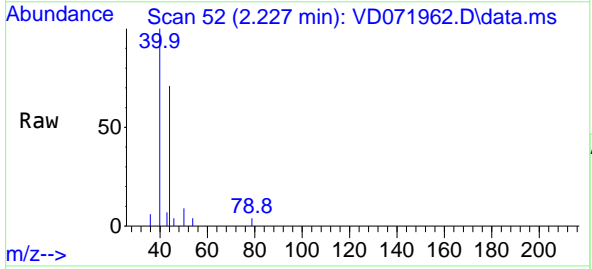
Instrument : MSVOA_D
 ClientSampleId : TP3-C



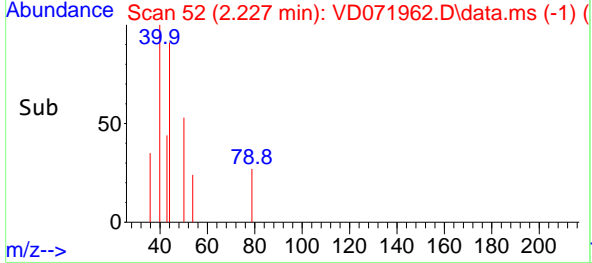
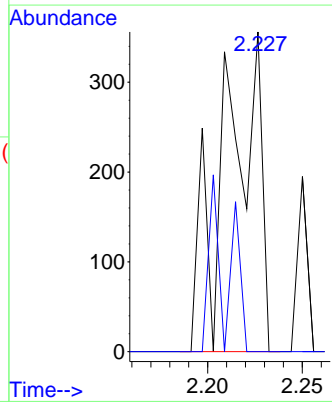
Tgt Ion:168 Resp: 15049
 Ion Ratio Lower Upper
 168 100
 99 67.0 49.8 74.6

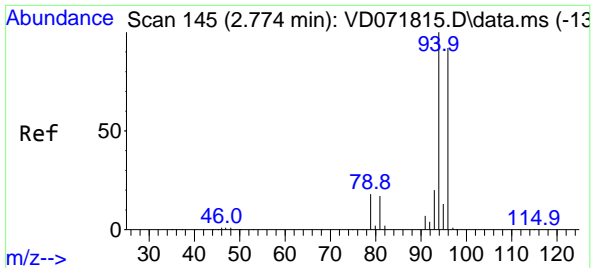


#3
 Chloromethane
 Concen: 2.204 ug/l
 RT: 2.227 min Scan# 52
 Delta R.T. 0.012 min
 Lab File: VD071962.D
 Acq: 14 Feb 2022 17:37



Tgt Ion: 50 Resp: 471
 Ion Ratio Lower Upper
 50 100
 52 0.0 27.4 41.0#

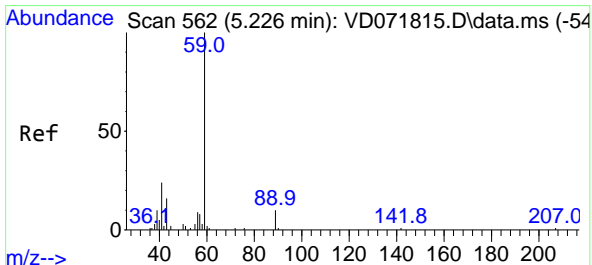
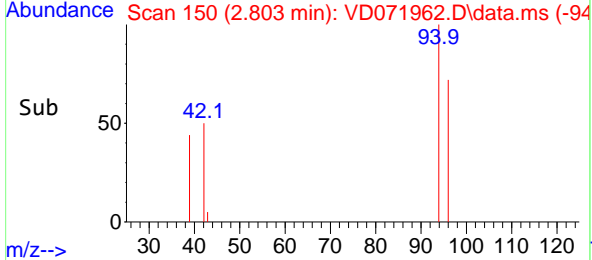
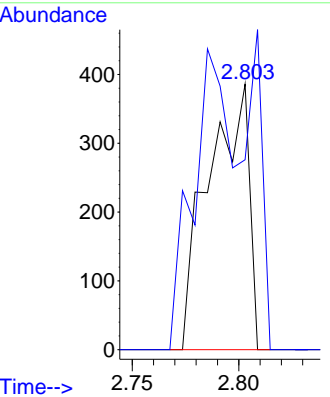
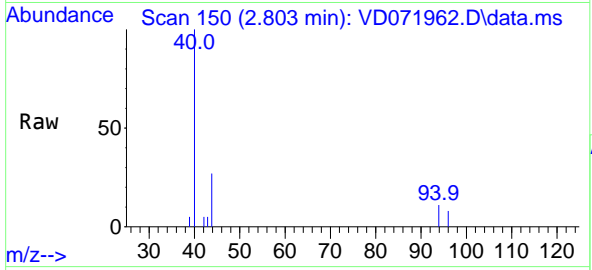




#5
 Bromomethane
 Concen: 3.462 ug/l
 RT: 2.803 min Scan# 11
 Delta R.T. 0.030 min
 Lab File: VD071962.D
 Acq: 14 Feb 2022 17:37

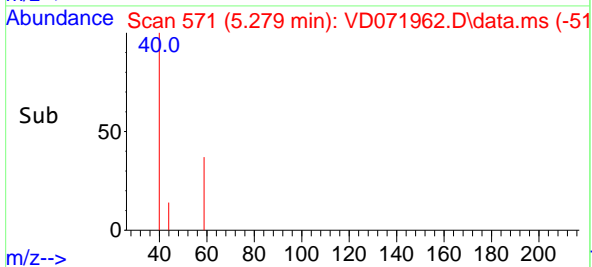
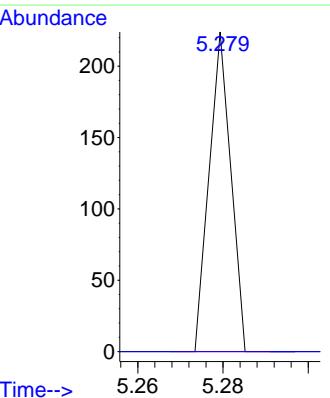
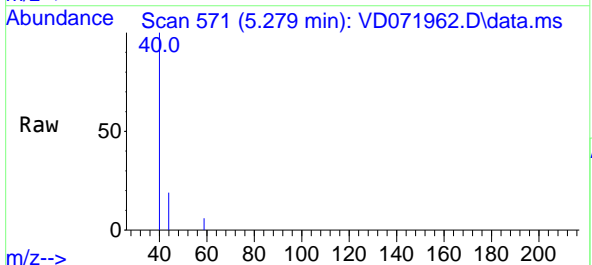
Instrument : MSVOA_D
 ClientSampleId : TP3-C

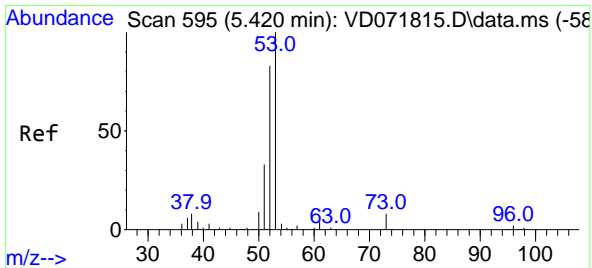
Tgt Ion: 94 Resp: 511
 Ion Ratio Lower Upper
 94 100
 96 71.5 77.6 116.4#



#11
 Tert butyl alcohol
 Concen: Below Cal
 RT: 5.279 min Scan# 571
 Delta R.T. 0.059 min
 Lab File: VD071962.D
 Acq: 14 Feb 2022 17:37

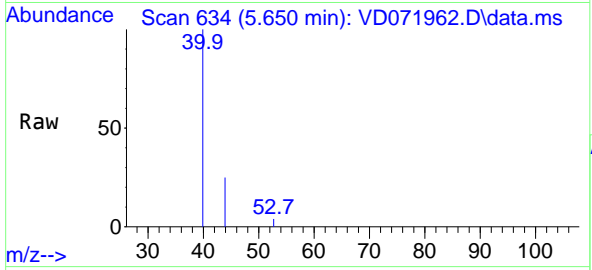
Tgt Ion: 59 Resp: 79
 Ion Ratio Lower Upper
 59 100
 57 0.0 7.8 11.6#





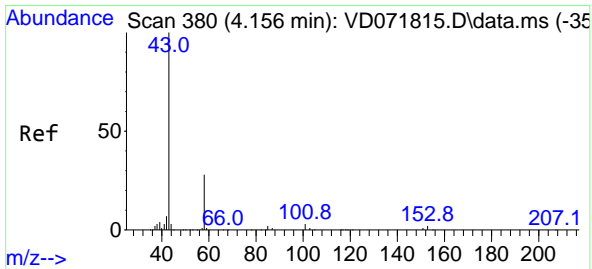
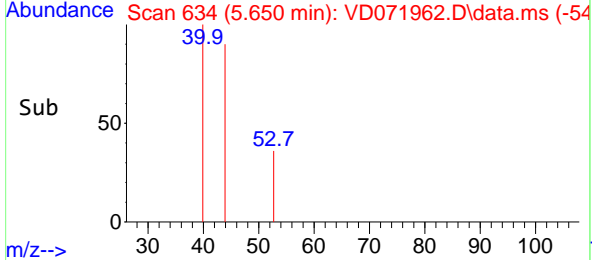
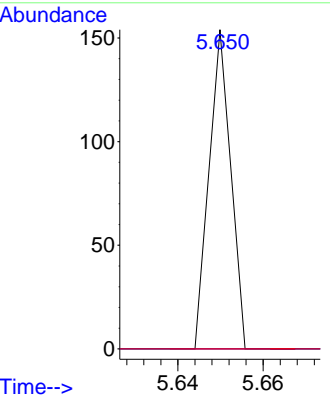
#15
 Acrylonitrile
 Concen: 1.256 ug/l
 RT: 5.650 min Scan# 61
 Delta R.T. 0.229 min
 Lab File: VD071962.D
 Acq: 14 Feb 2022 17:37

Instrument : MSVOA_D
 ClientSampleId : TP3-C

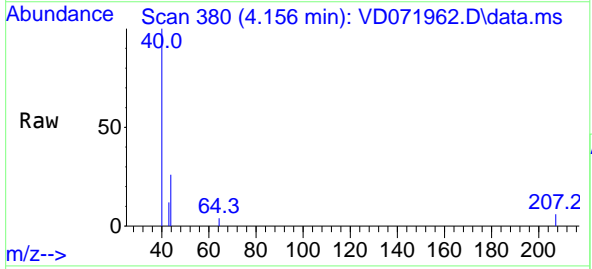


Tgt Ion: 53 Resp: 54

Ion	Ratio	Lower	Upper
53	100		
52	0.0	67.2	100.8#
51	0.0	30.3	45.5#

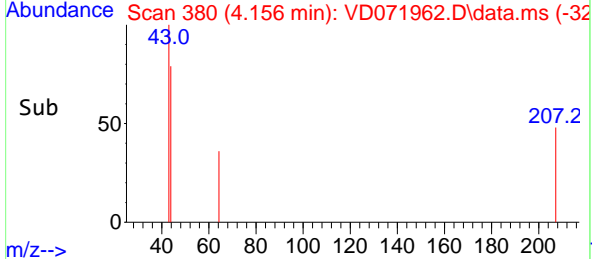
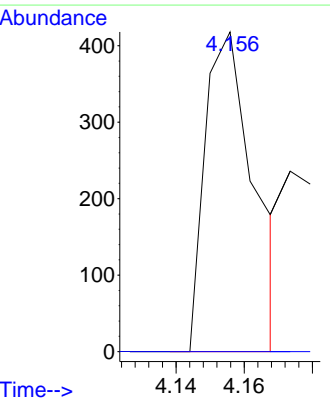


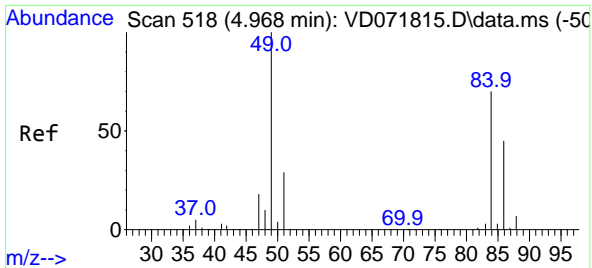
#16
 Acetone
 Concen: 8.028 ug/l
 RT: 4.156 min Scan# 380
 Delta R.T. 0.000 min
 Lab File: VD071962.D
 Acq: 14 Feb 2022 17:37



Tgt Ion: 43 Resp: 418

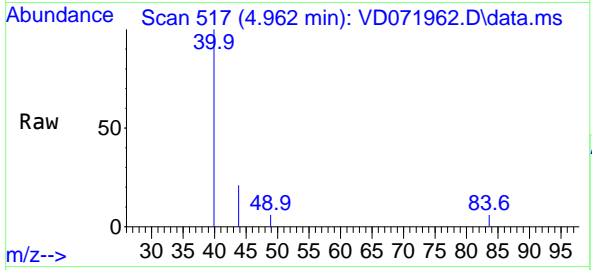
Ion	Ratio	Lower	Upper
43	100		
58	0.0	22.1	33.1#





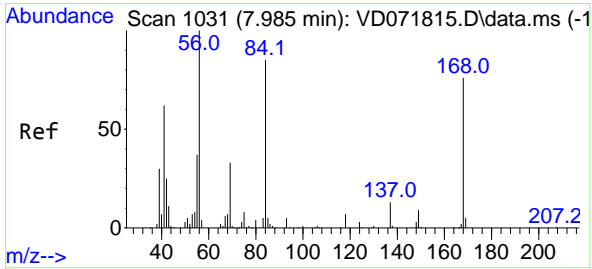
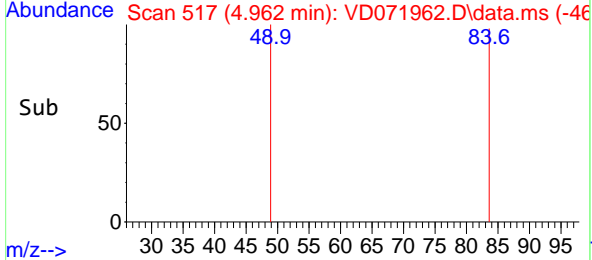
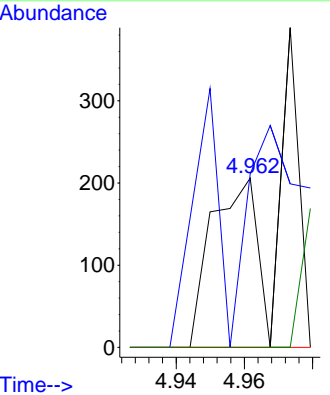
#20
 Methylene Chloride
 Concen: Below Cal
 RT: 4.962 min Scan# 517
 Delta R.T. -0.006 min
 Lab File: VD071962.D
 Acq: 14 Feb 2022 17:37

Instrument : MSVOA_D
 ClientSampleId : TP3-C

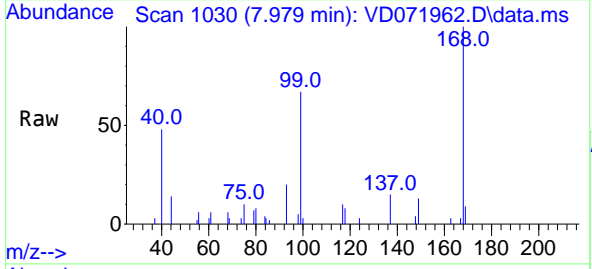


Tgt Ion: 84 Resp: 191

Ion	Ratio	Lower	Upper
84	100		
49	102.4	112.8	169.2#
51	0.0	32.6	48.8#
86	0.0	47.9	71.9#

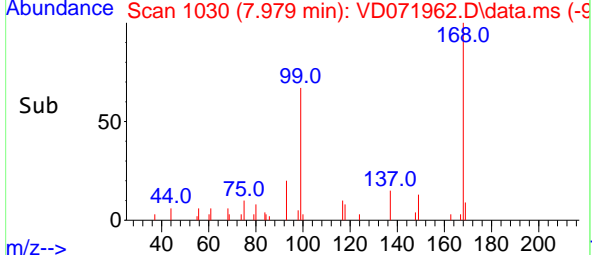
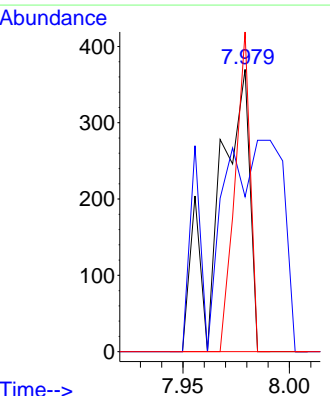


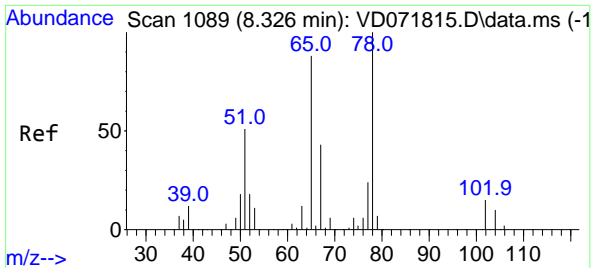
#31
 Cyclohexane
 Concen: 1.068 ug/l
 RT: 7.979 min Scan# 1030
 Delta R.T. -0.006 min
 Lab File: VD071962.D
 Acq: 14 Feb 2022 17:37



Tgt Ion: 56 Resp: 388

Ion	Ratio	Lower	Upper
56	100		
69	54.9	25.4	38.2#
84	113.2	63.0	94.4#



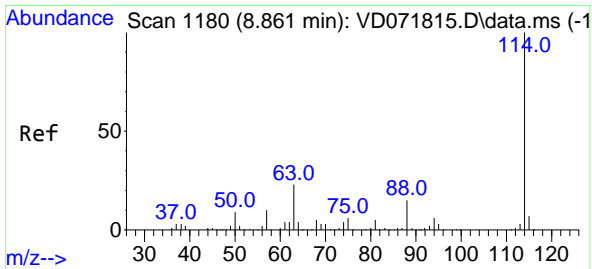
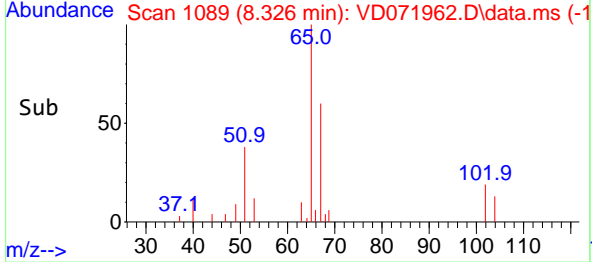
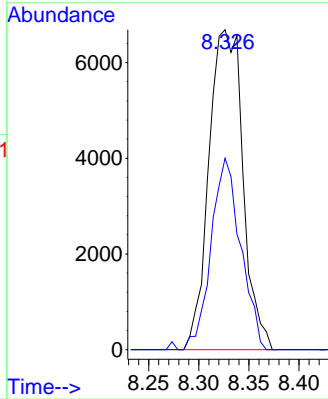
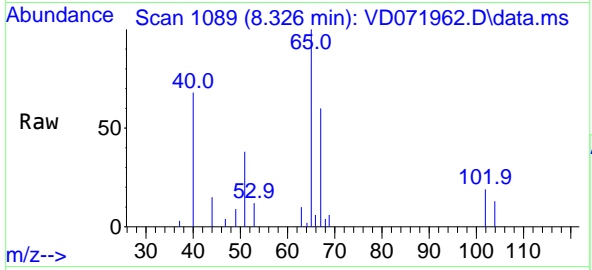


#33
 1,2-Dichloroethane-d4
 Concen: 82.955 ug/l
 RT: 8.326 min Scan# 1089
 Delta R.T. 0.000 min
 Lab File: VD071962.D
 Acq: 14 Feb 2022 17:37

Instrument : MSVOA_D
 ClientSampleId : TP3-C

Tgt Ion: 65 Resp: 15779

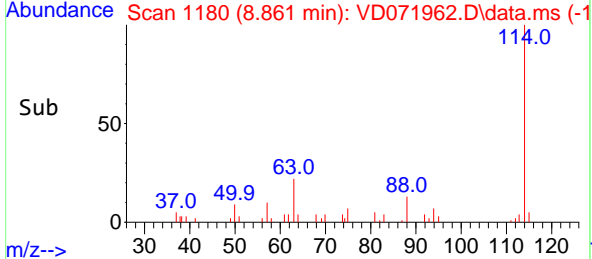
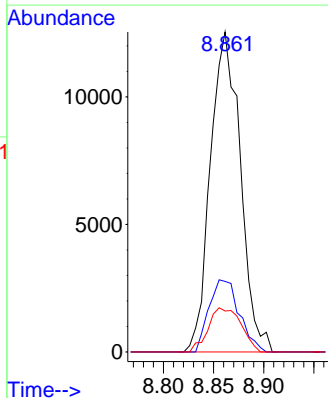
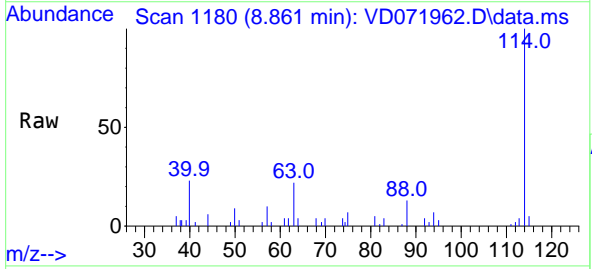
Ion	Ratio	Lower	Upper
65	100		
67	52.0	0.0	101.4

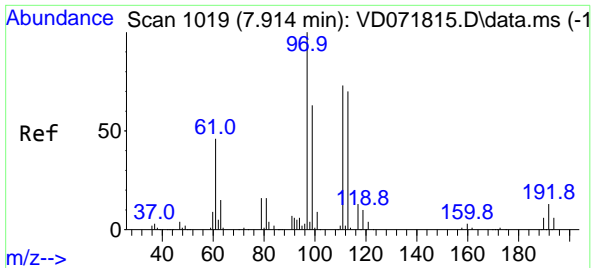


#34
 1,4-Difluorobenzene
 Concen: 50.000 ug/l
 RT: 8.861 min Scan# 1180
 Delta R.T. 0.000 min
 Lab File: VD071962.D
 Acq: 14 Feb 2022 17:37

Tgt Ion: 114 Resp: 26030

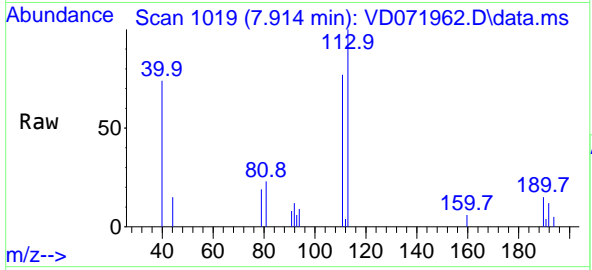
Ion	Ratio	Lower	Upper
114	100		
63	22.0	0.0	46.6
88	12.8	0.0	33.2



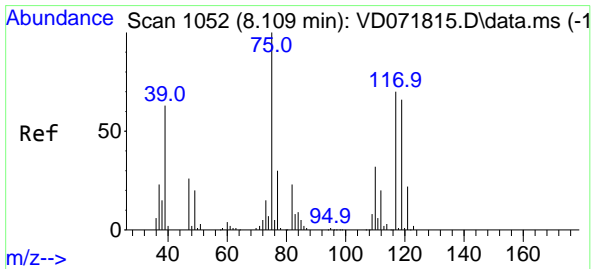
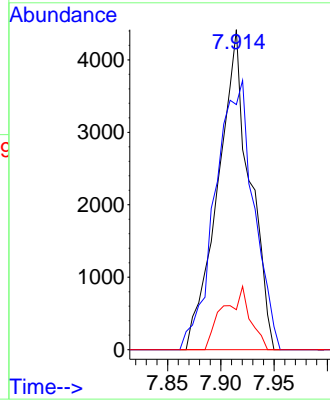
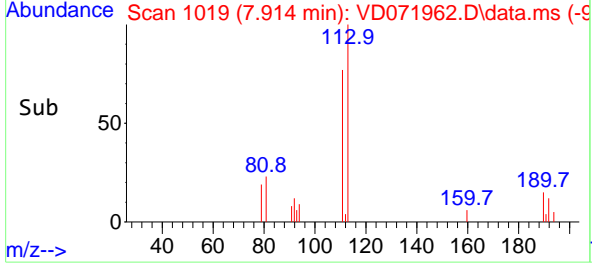


#35
 Dibromofluoromethane
 Concen: 53.845 ug/l
 RT: 7.914 min Scan# 1019
 Delta R.T. 0.000 min
 Lab File: VD071962.D
 Acq: 14 Feb 2022 17:37

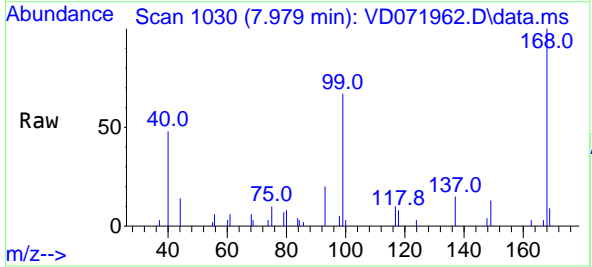
Instrument : MSVOA_D
 ClientSampleId : TP3-C



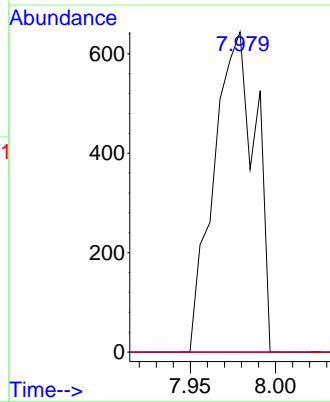
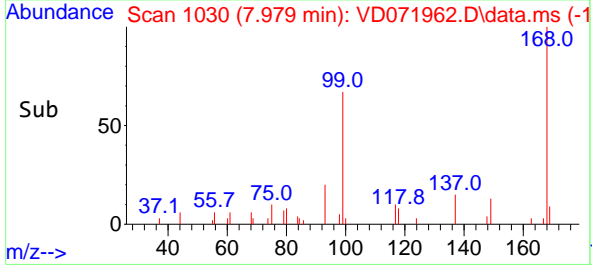
Tgt Ion:113 Resp: 9213
 Ion Ratio Lower Upper
 113 100
 111 101.8 83.8 125.6
 192 16.5 14.6 21.8

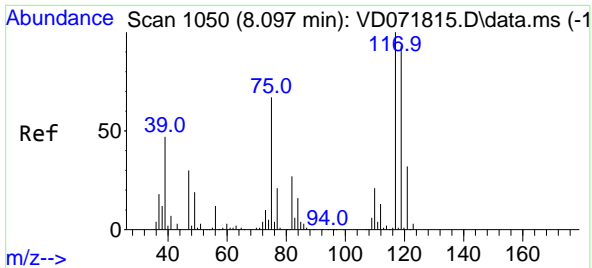


#36
 1,1-Dichloropropene
 Concen: 3.739 ug/l
 RT: 7.979 min Scan# 1030
 Delta R.T. -0.135 min
 Lab File: VD071962.D
 Acq: 14 Feb 2022 17:37



Tgt Ion: 75 Resp: 1098
 Ion Ratio Lower Upper
 75 100
 110 0.0 16.4 49.1#
 77 0.0 24.2 36.2#



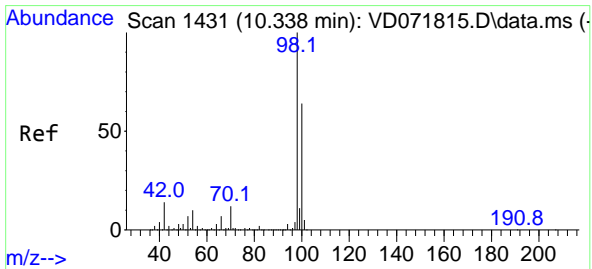
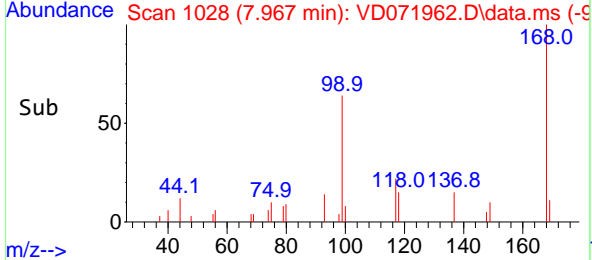
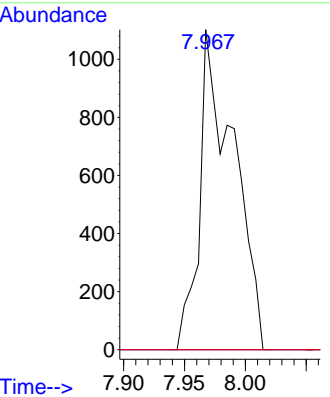
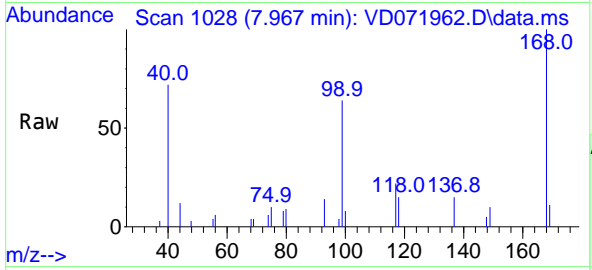


#38
 Carbon Tetrachloride
 Concen: 7.362 ug/l
 RT: 7.967 min Scan# 1050
 Delta R.T. -0.129 min
 Lab File: VD071962.D
 Acq: 14 Feb 2022 17:37

Instrument : MSVOA_D
 ClientSampleId : TP3-C

Tgt Ion:117 Resp: 2138

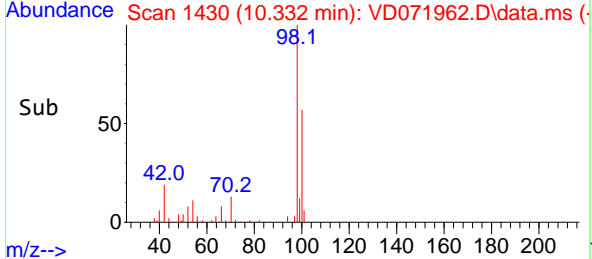
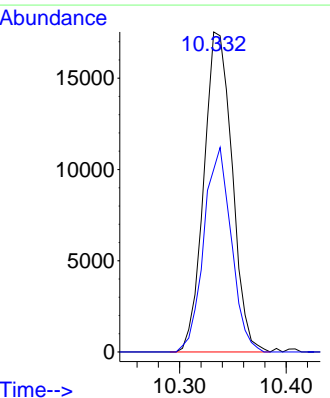
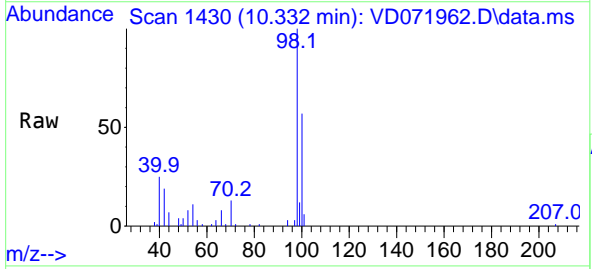
Ion	Ratio	Lower	Upper
117	100		
119	0.0	75.8	113.6#
121	0.0	24.5	36.7#

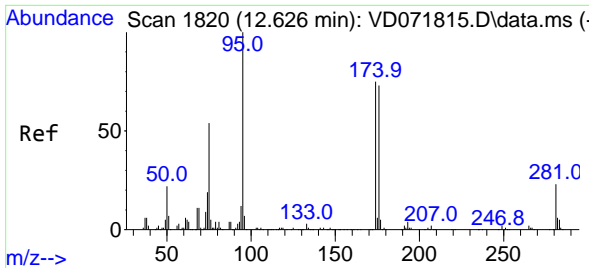


#50
 Toluene-d8
 Concen: 50.613 ug/l
 RT: 10.332 min Scan# 1430
 Delta R.T. -0.006 min
 Lab File: VD071962.D
 Acq: 14 Feb 2022 17:37

Tgt Ion: 98 Resp: 32342

Ion	Ratio	Lower	Upper
98	100		
100	61.9	52.4	78.6



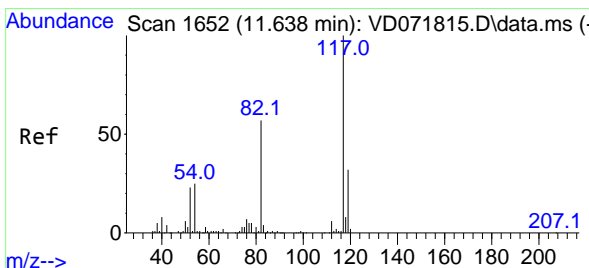
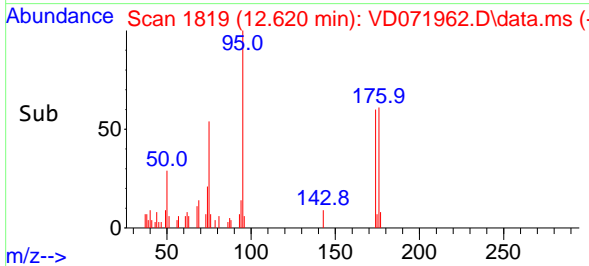
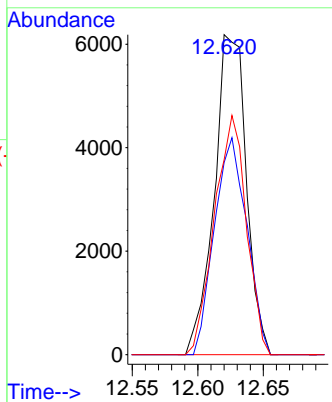
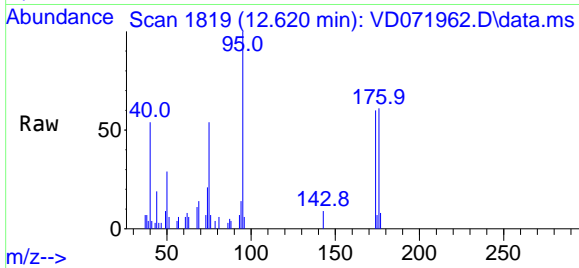


#62
 4-Bromofluorobenzene
 Concen: 47.156 ug/l
 RT: 12.620 min Scan# 1819
 Delta R.T. -0.006 min
 Lab File: VD071962.D
 Acq: 14 Feb 2022 17:37

Instrument :
 MSVOA_D
 ClientSampleId :
 TP3-C

Tgt Ion: 95 Resp: 10523

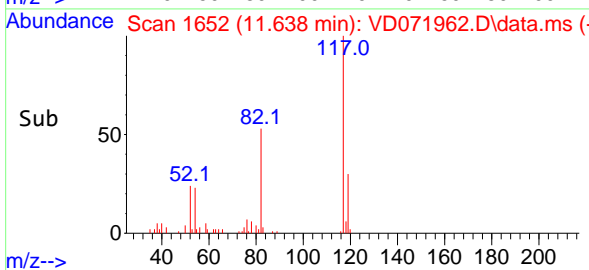
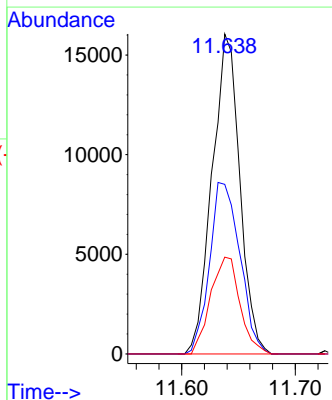
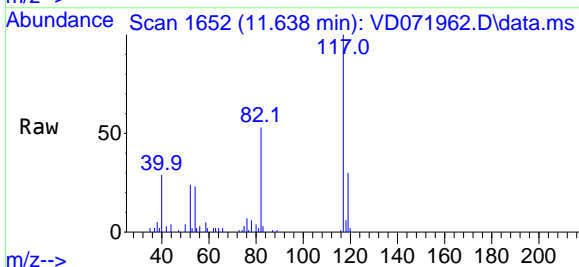
Ion	Ratio	Lower	Upper
95	100		
174	68.7	0.0	152.8
176	74.4	0.0	145.4

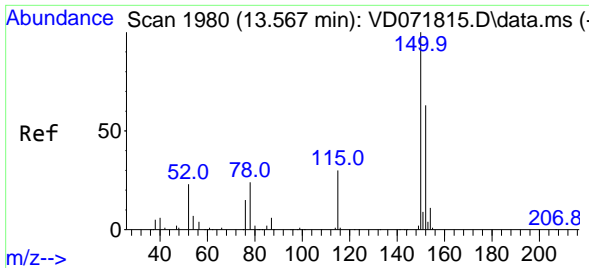


#63
 Chlorobenzene-d5
 Concen: 50.000 ug/l
 RT: 11.638 min Scan# 1652
 Delta R.T. 0.000 min
 Lab File: VD071962.D
 Acq: 14 Feb 2022 17:37

Tgt Ion: 117 Resp: 27210

Ion	Ratio	Lower	Upper
117	100		
82	53.0	45.3	67.9
119	30.2	26.6	40.0



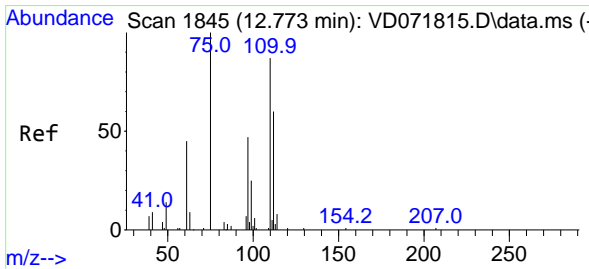
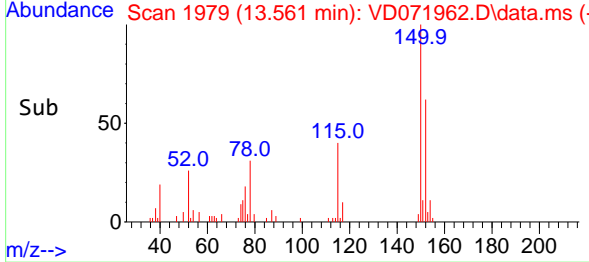
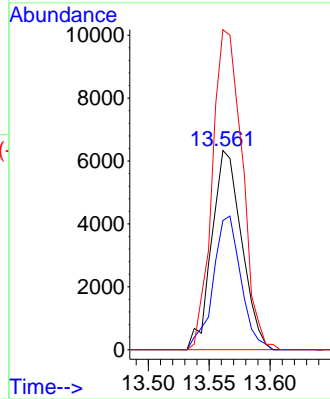
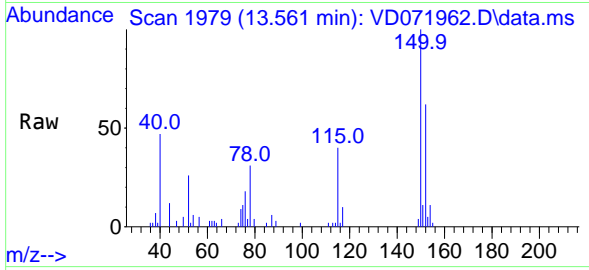


#72
 1,4-Dichlorobenzene-d4
 Concen: 50.000 ug/l
 RT: 13.561 min Scan# 1980
 Delta R.T. -0.006 min
 Lab File: VD071962.D
 Acq: 14 Feb 2022 17:37

Instrument : MSVOA_D
 ClientSampleId : TP3-C

Tgt Ion:152 Resp: 10798

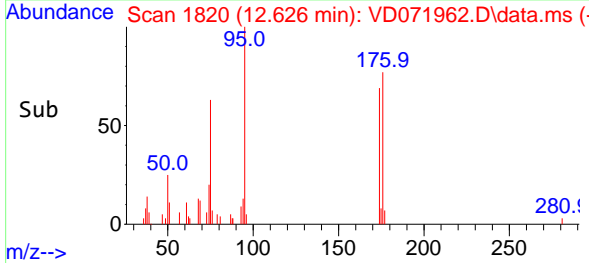
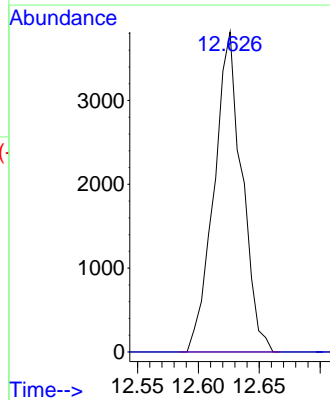
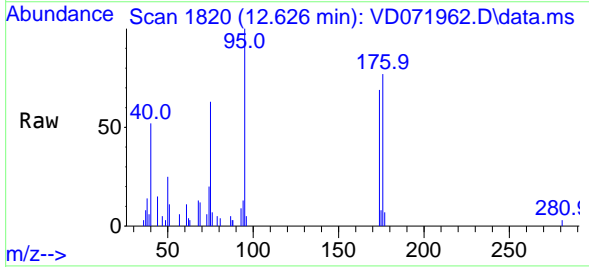
Ion	Ratio	Lower	Upper
152	100		
115	62.4	31.3	93.8
150	161.0	0.0	348.6

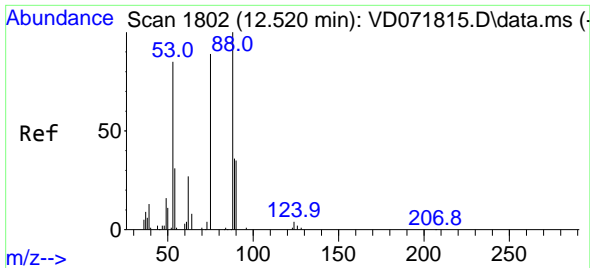


#76
 1,2,3-Trichloropropane
 Concen: 53.490 ug/l
 RT: 12.626 min Scan# 1820
 Delta R.T. -0.147 min
 Lab File: VD071962.D
 Acq: 14 Feb 2022 17:37

Tgt Ion: 75 Resp: 6087

Ion	Ratio	Lower	Upper
75	100		
77	0.0	0.0	0.0

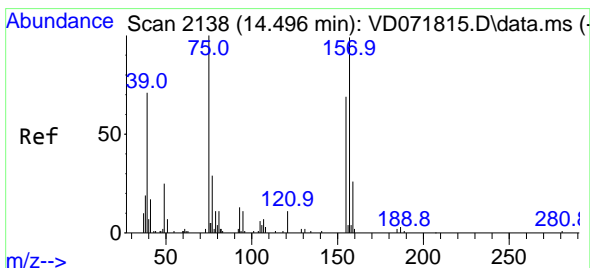
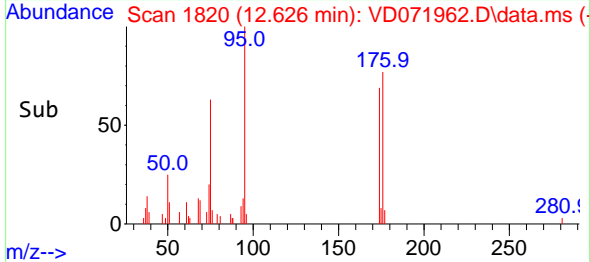
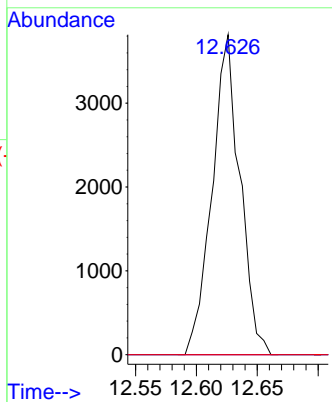
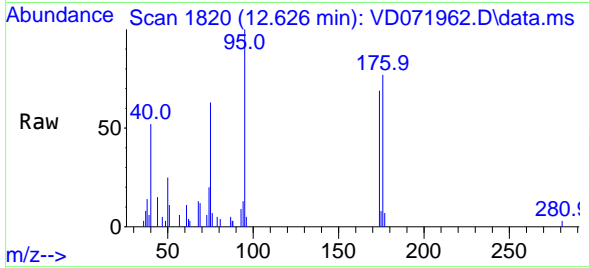




#81
 trans-1,4-Dichloro-2-butene
 Concen: 131.519 ug/l
 RT: 12.626 min Scan# 11
 Delta R.T. 0.106 min
 Lab File: VD071962.D
 Acq: 14 Feb 2022 17:37

Instrument :
 MSVOA_D
 ClientSampleId :
 TP3-C

Tgt Ion: 75 Resp: 6087
 Ion Ratio Lower Upper
 75 100
 53 0.0 86.5 129.7#
 89 0.0 33.9 50.9#



#92
 1,2-Dibromo-3-Chloropropane
 Concen: 2.263 ug/l
 RT: 14.738 min Scan# 2179
 Delta R.T. 0.247 min
 Lab File: VD071962.D
 Acq: 14 Feb 2022 17:37

Tgt Ion: 75 Resp: 58
 Ion Ratio Lower Upper
 75 100
 155 0.0 36.8 110.3#
 157 0.0 48.4 145.0#

