

Data Path : Z:\voasrv\HPCHEM1\MSVOA_D\Data\VD022024\
 Data File : VD078482.D
 Acq On : 20 Feb 2024 14:42
 Operator : RP/MD
 Sample : P1523-01
 Misc : 5.02G/5ml/MSVOA_D/SOIL/A
 ALS Vial : 11 Sample Multiplier: 1

Instrument :
 MSVOA_D
 ClientSampleId :
 20240763-COMPOSITE-39N-N-3-01

Integration Parameters: RTEINT.P

Integrator: RTE
 Smoothing : ON Filtering: 5
 Sampling : 1 Min Area: 3 % of largest Peak
 Start Thrs: 0.2 Max Peaks: 100
 Stop Thrs : 0 Peak Location: TOP

If leading or trailing edge < 100 prefer < Baseline drop else tangent >
 Peak separation: 5

Method : Z:\voasrv\HPCHEM1\MSVOA_D\Method\82D021324S.M
 Title : SW846 8260

Signal : TIC: VD078482.D\data.ms

peak #	R.T. min	first scan	max scan	last scan	PK TY	peak height	corr. area	corr. % max.	% of total
1	1.740	14	26	35	rBV	342926	580312	71.78%	11.860%
2	4.028	407	415	421	rBV3	5519	15175	1.88%	0.310%
3	4.805	538	547	558	rVB5	12262	36645	4.53%	0.749%
4	7.075	924	933	947	rBV4	4098	12922	1.60%	0.264%
5	7.805	1048	1057	1063	rBV2	99157	240828	29.79%	4.922%
6	7.875	1063	1069	1081	rVB2	153182	347881	43.03%	7.110%
7	8.228	1120	1129	1142	rBV2	70343	163271	20.20%	3.337%
8	8.781	1214	1223	1233	rBV	256068	518624	64.15%	10.599%
9	10.269	1466	1476	1488	rBV	440504	767053	94.88%	15.677%
10	10.663	1536	1543	1549	rVB3	6180	11548	1.43%	0.236%
11	11.581	1691	1699	1710	rBV	481942	808451	100.00%	16.523%
12	12.575	1861	1868	1877	rVB	358440	596703	73.81%	12.195%
13	13.516	2021	2028	2035	rBV	502764	784001	96.98%	16.023%
14	14.045	2112	2118	2122	rBV2	6374	9597	1.19%	0.196%

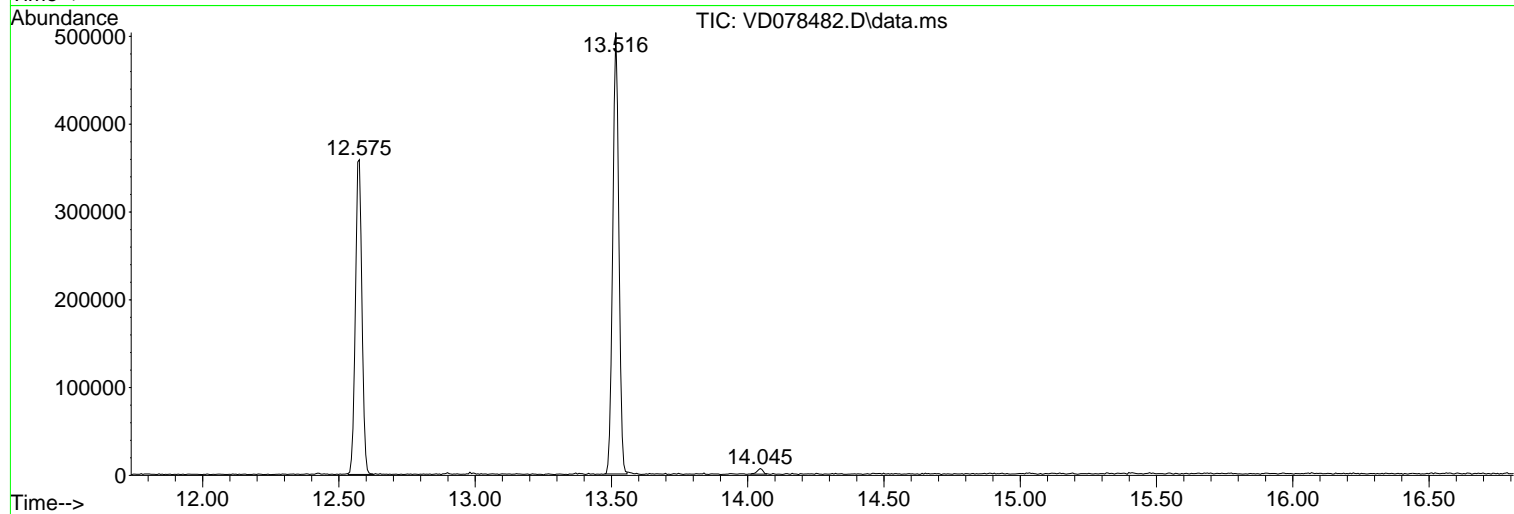
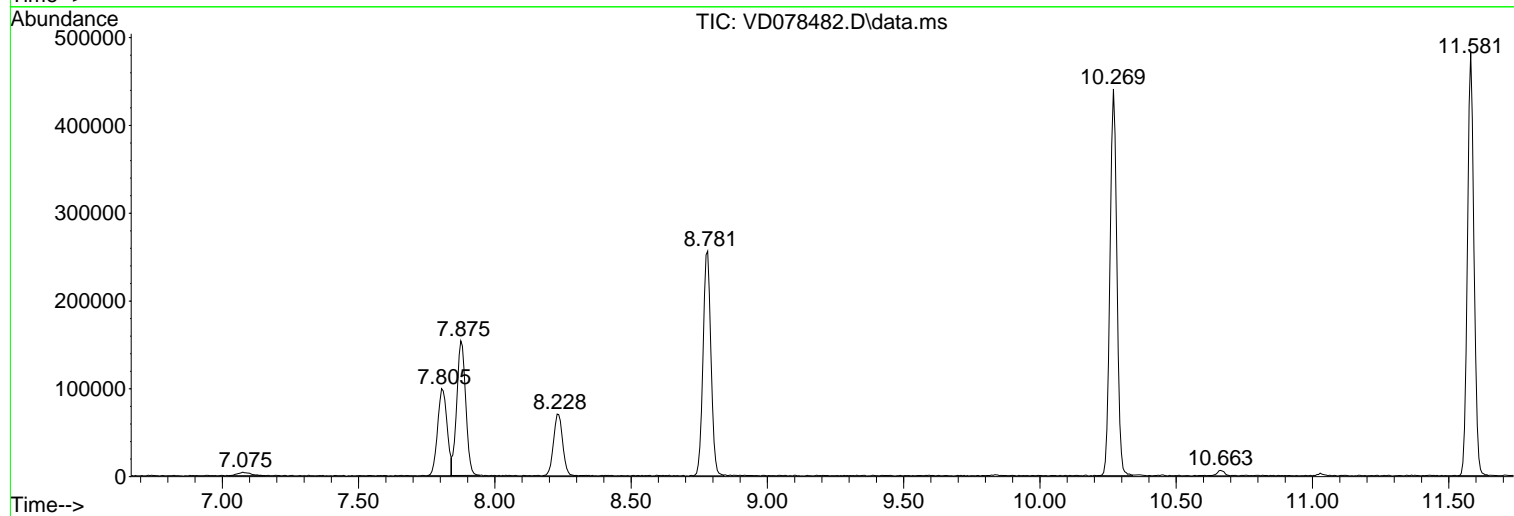
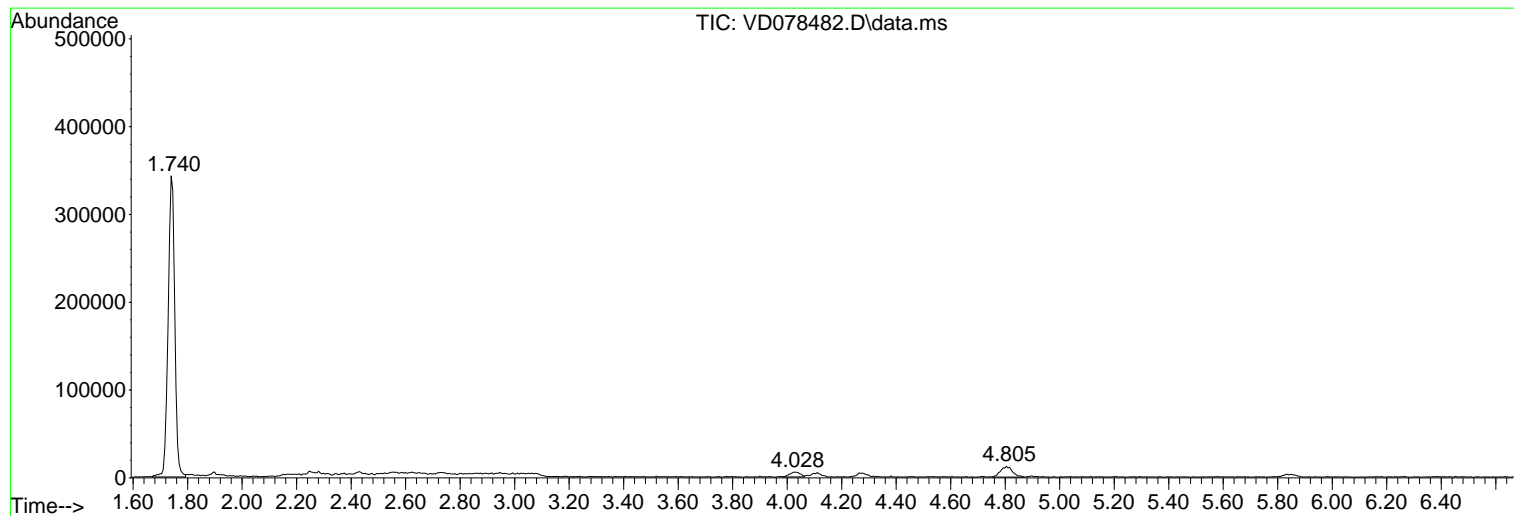
Sum of corrected areas: 4893011

Data Path : Z:\voasrv\HPCHEM1\MSVOA_D\Data\VD022024\
Data File : VD078482.D
Acq On : 20 Feb 2024 14:42
Operator : RP/MD
Sample : P1523-01
Misc : 5.02G/5ml/MSVOA_D/SOIL/A
ALS Vial : 11 Sample Multiplier: 1

Instrument :
MSVOA_D
ClientSampleId :
20240763-COMPOSITE-39N-N-3-01

Quant Method : Z:\voasrv\HPCHEM1\MSVOA_D\Method\82D021324S.M
Quant Title : SW846 8260

TIC Library : C:\Database\NIST0.L
TIC Integration Parameters: LSCINT.P



Library Search Compound Report

Data Path : Z:\voasrv\HPCHEM1\MSVOA_D\Data\VD022024\
Data File : VD078482.D
Acq On : 20 Feb 2024 14:42
Operator : RP/MD
Sample : P1523-01
Misc : 5.02G/5ml/MSVOA_D/SOIL/A
ALS Vial : 11 Sample Multiplier: 1

Instrument :
MSVOA_D
ClientSampleId :
20240763-COMPOSITE-39N-N-3-01

Quant Method : Z:\voasrv\HPCHEM1\MSVOA_D\Method\82D021324S.M
Quant Title : SW846 8260

TIC Library : C:\Database\NIST20.L
TIC Integration Parameters: LSCINT.P

No Library Search Compounds Detected

Data Path : Z:\voasrv\HPCHEM1\MSVOA_D\Data\VD022024\
Data File : VD078482.D
Acq On : 20 Feb 2024 14:42
Operator : RP/MD
Sample : P1523-01
Misc : 5.02G/5ml/MSVOA_D/SOIL/A
ALS Vial : 11 Sample Multiplier: 1

Instrument :
MSVOA_D
ClientSampleId :
20240763-COMPOSITE-39N-N-3-01

Quant Method : Z:\voasrv\HPCHEM1\MSVOA_D\Method\82D021324S.M
Quant Title : SW846 8260

TIC Library : C:\Database\NIST20.L
TIC Integration Parameters: LSCINT.P

TIC Top Hit name	RT	EstConc	Units	Response	--Internal Standard--			
					#	RT	Resp	Conc
