

Data Path : Z:\voasrv\HPCHEM1\MSVOA_D\Data\VD022024\
 Data File : VD078485.D
 Acq On : 20 Feb 2024 16:05
 Operator : RP/MD
 Sample : P1523-07
 Misc : 5.00G/5ml/MSVOA_D/SOIL/B
 ALS Vial : 6 Sample Multiplier: 1

Instrument :
 MSVOA_D
 ClientSampleId :
 20240767-AMENDED-COMP-39N-N-3-02

Integration Parameters: RTEINT.P
 Integrator: RTE
 Smoothing : ON Filtering: 5
 Sampling : 1 Min Area: 3 % of largest Peak
 Start Thrs: 0.2 Max Peaks: 100
 Stop Thrs : 0 Peak Location: TOP

If leading or trailing edge < 100 prefer < Baseline drop else tangent >
 Peak separation: 5

Method : Z:\voasrv\HPCHEM1\MSVOA_D\Method\82D021324S.M
 Title : SW846 8260

Signal : TIC: VD078485.D\data.ms

peak #	R.T. min	first scan	max scan	last scan	PK TY	peak height	corr. area	corr. % max.	% of total
1	1.728	20	24	34	rVB	47687	72592	10.05%	1.685%
2	2.422	137	142	148	rBV2	14025	22145	3.07%	0.514%
3	2.634	173	178	189	rBV3	12320	40865	5.66%	0.949%
4	4.022	405	414	415	rBV2	12505	21060	2.92%	0.489%
5	4.111	419	429	440	rVB2	87666	237762	32.92%	5.519%
6	4.269	446	456	469	rBV2	45763	126466	17.51%	2.936%
7	4.805	535	547	555	rBV6	8005	25818	3.57%	0.599%
8	5.846	713	724	733	rBV5	3520	10284	1.42%	0.239%
9	7.075	926	933	942	rVB5	6270	17711	2.45%	0.411%
10	7.810	1046	1058	1063	rBV2	51125	128633	17.81%	2.986%
11	7.875	1063	1069	1083	rVB2	140477	310649	43.01%	7.211%
12	8.234	1120	1130	1140	rBV	66935	148225	20.52%	3.441%
13	8.775	1212	1222	1235	rBV	238183	474729	65.73%	11.020%
14	8.981	1251	1257	1260	rBV3	4004	7451	1.03%	0.173%
15	10.269	1468	1476	1490	rBV	396468	703851	97.46%	16.339%
16	10.657	1536	1542	1548	rBV3	6048	11661	1.61%	0.271%
17	11.581	1691	1699	1710	rBV	423924	722210	100.00%	16.766%
18	12.575	1861	1868	1876	rBV	326269	530841	73.50%	12.323%
19	13.516	2020	2028	2037	rBV	435004	694750	96.20%	16.128%

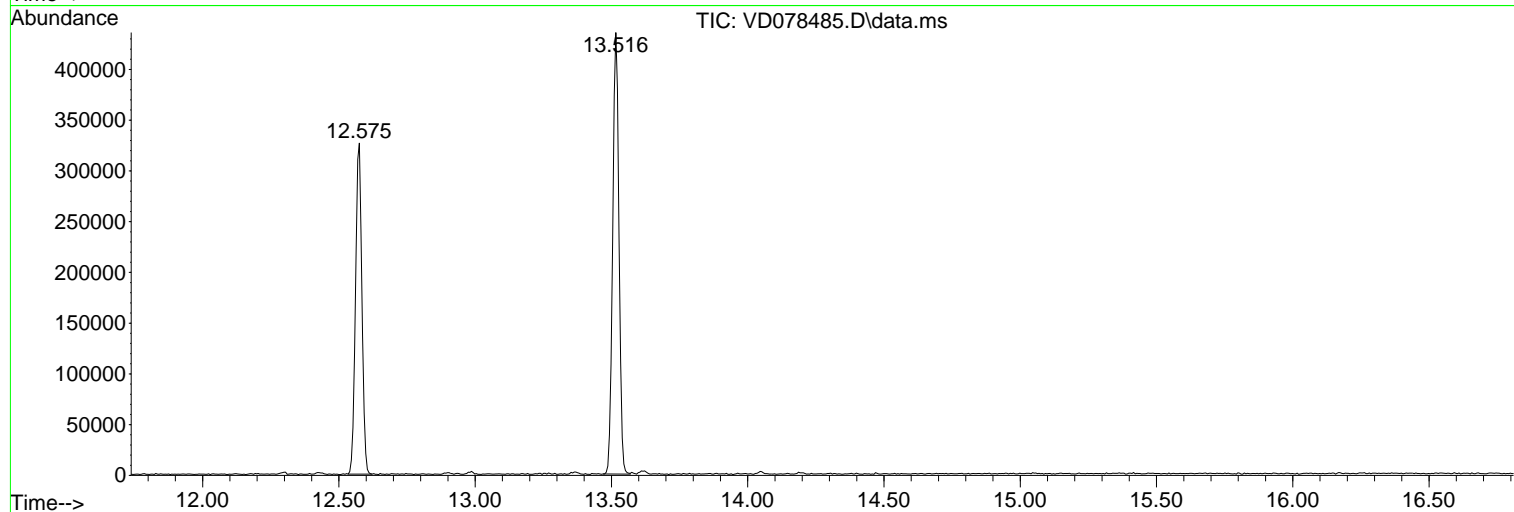
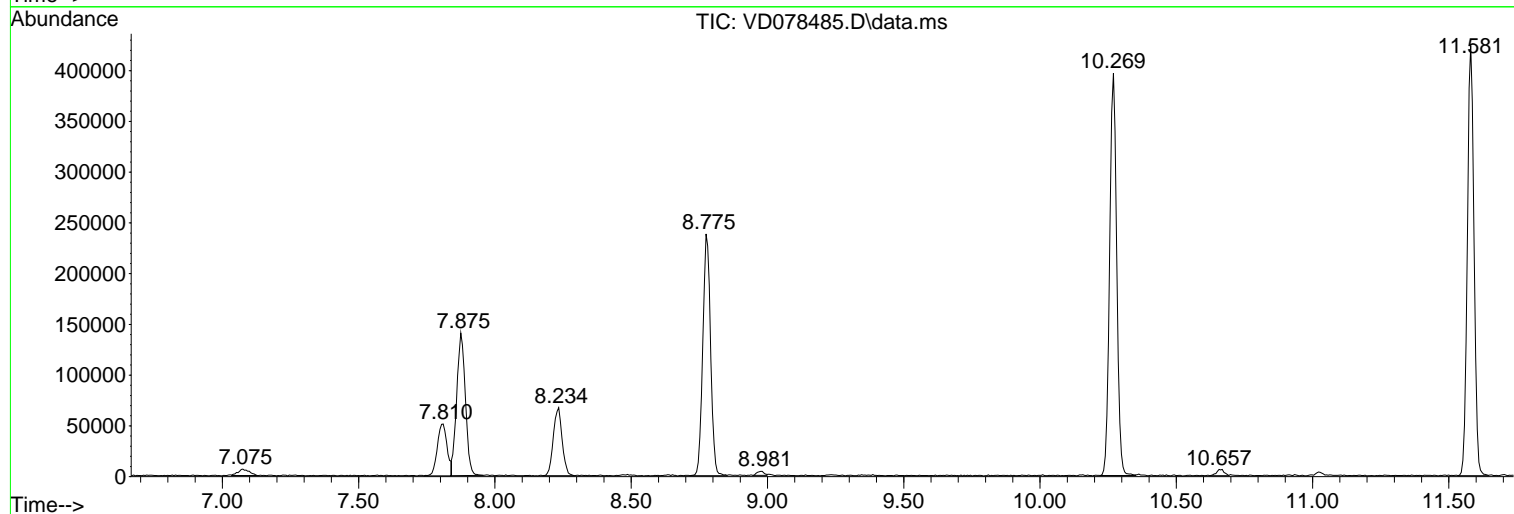
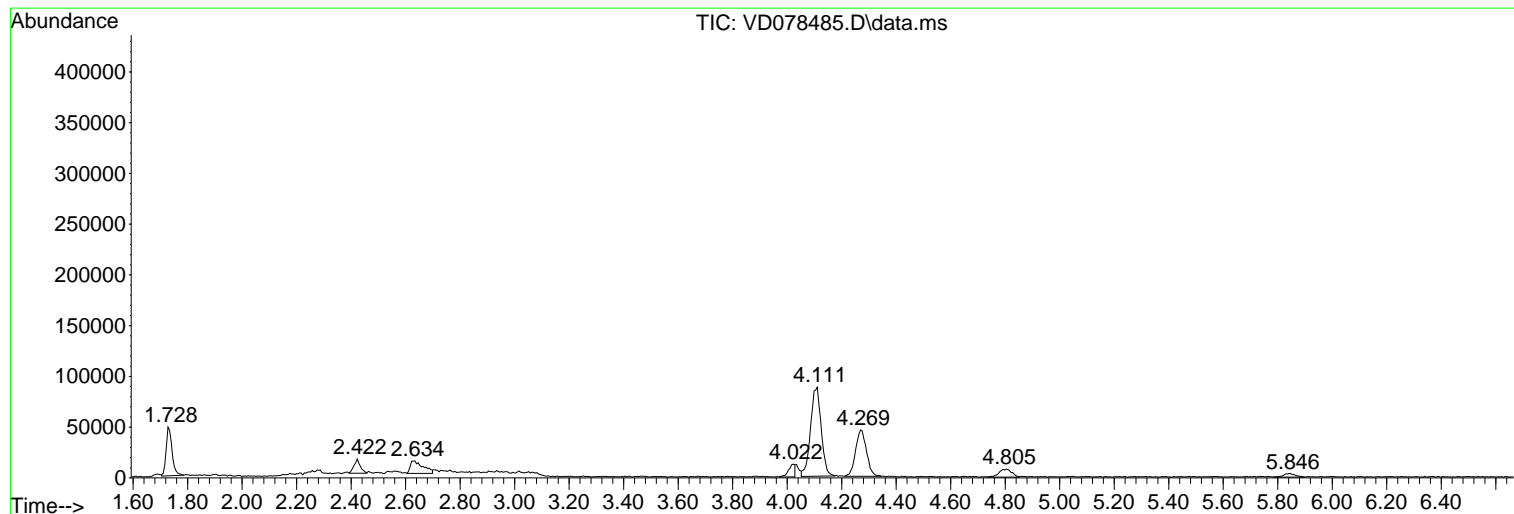
Sum of corrected areas: 4307703

Data Path : Z:\voasrv\HPCHEM1\MSVOA_D\Data\VD022024\
Data File : VD078485.D
Acq On : 20 Feb 2024 16:05
Operator : RP/MD
Sample : P1523-07
Misc : 5.00G/5ml/MSVOA_D/SOIL/B
ALS Vial : 6 Sample Multiplier: 1

Instrument :
MSVOA_D
ClientSampleId :
20240767-AMENDED-COMP-39N-N-3-02

Quant Method : Z:\voasrv\HPCHEM1\MSVOA_D\Method\82D021324S.M
Quant Title : SW846 8260

TIC Library : C:\Database\NIST20.L
TIC Integration Parameters: LSCINT.P



Data Path : Z:\voasrv\HPCHEM1\MSVOA_D\Data\VD022024\
 Data File : VD078485.D
 Acq On : 20 Feb 2024 16:05
 Operator : RP/MD
 Sample : P1523-07
 Misc : 5.00G/5ml/MSVOA_D/SOIL/B
 ALS Vial : 6 Sample Multiplier: 1

Instrument :
 MSVOA_D
 ClientSampleId :
 20240767-AMENDED-COMP-39N-N-3-02

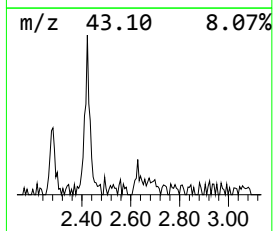
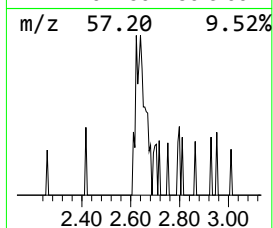
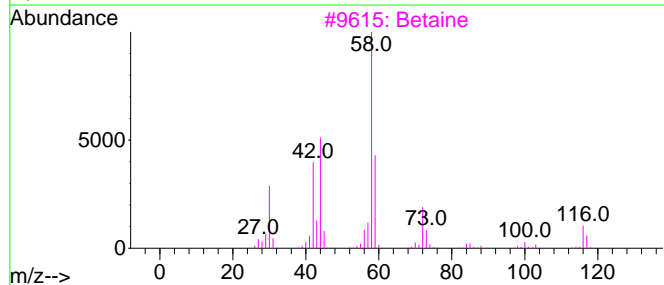
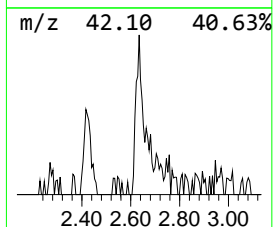
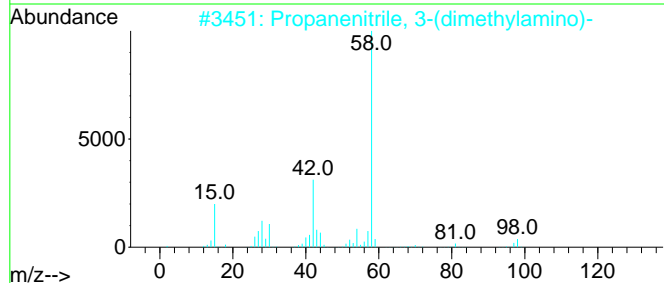
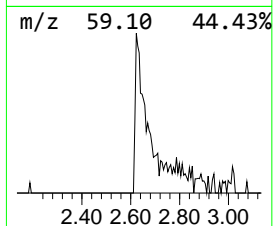
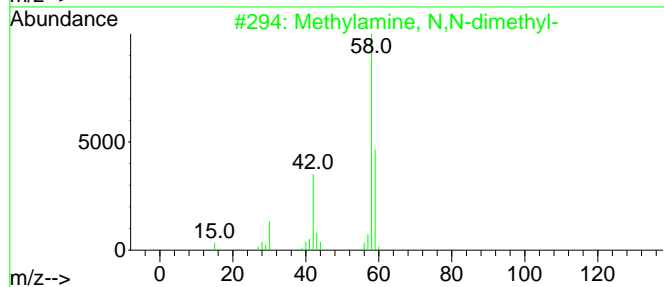
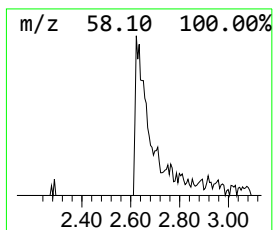
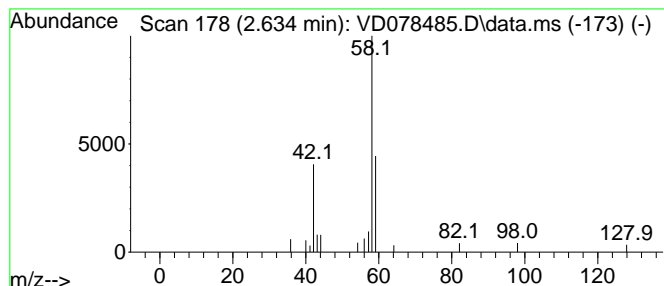
Quant Method : Z:\voasrv\HPCHEM1\MSVOA_D\Method\82D021324S.M
 Quant Title : SW846 8260

TIC Library : C:\Database\NIST20.L
 TIC Integration Parameters: LSCINT.P

 Peak Number 2 Methylamine, N,N-dimethyl- Concentration Rank 3

R.T.	EstConc	Area	Relative to ISTD	R.T.
2.634	6.58 ug/l	40865	Pentafluorobenzene	7.875

Hit#	of	5	Tentative ID	MW	MolForm	CAS#	Qual
1			Methylamine, N,N-dimethyl-	59	C3H9N	000075-50-3	86
2			Propanenitrile, 3-(dimethylamino)-	98	C5H10N2	001738-25-6	42
3			Betaine	117	C5H11NO2	000107-43-7	40
4			1-(2-Dimethylaminoethyl)-3,3-dim...	143	C7H17N3	054731-08-7	9
5			Butanoic acid, 4-(dimethylamino)...	147	C6H13NO3	003688-46-8	9



Data Path : Z:\voasrv\HPCHEM1\MSVOA_D\Data\VD022024\
 Data File : VD078485.D
 Acq On : 20 Feb 2024 16:05
 Operator : RP/MD
 Sample : P1523-07
 Misc : 5.00G/5ml/MSVOA_D/SOIL/B
 ALS Vial : 6 Sample Multiplier: 1

Instrument :
 MSVOA_D
 ClientSampleId :
 20240767-AMENDED-COMP-39N-N-3-02

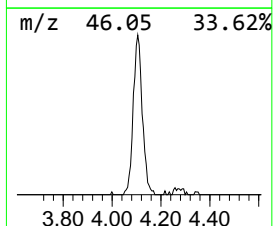
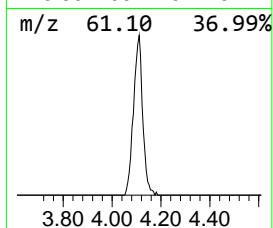
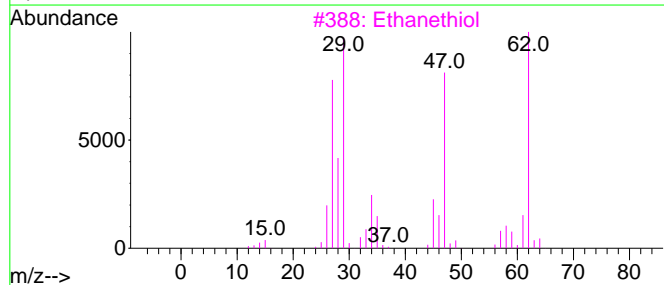
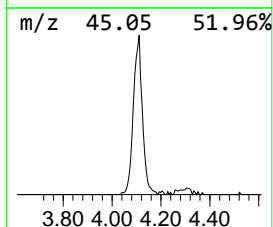
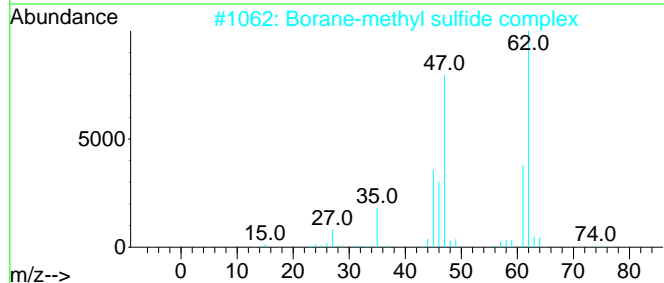
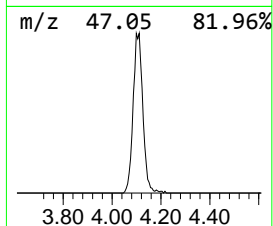
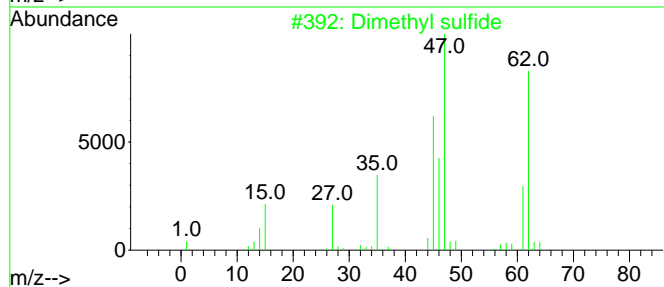
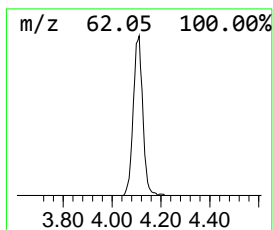
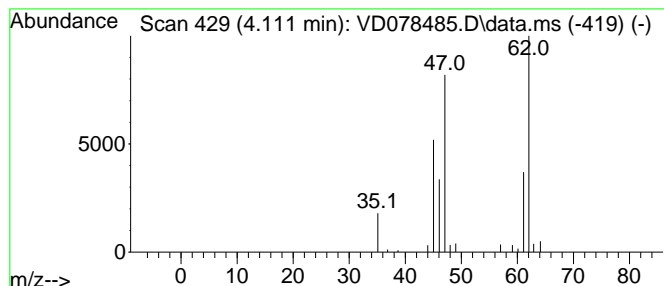
Quant Method : Z:\voasrv\HPCHEM1\MSVOA_D\Method\82D021324S.M
 Quant Title : SW846 8260

TIC Library : C:\Database\NIST20.L
 TIC Integration Parameters: LSCINT.P

 Peak Number 3 Dimethyl sulfide Concentration Rank 1

R.T.	EstConc	Area	Relative to ISTD	R.T.
4.111	38.27 ug/l	237762	Pentafluorobenzene	7.875

Hit#	of	Tentative ID	MW	MolForm	CAS#	Qual
1	5	Dimethyl sulfide	62	C2H6S	000075-18-3	94
2		Borane-methyl sulfide complex	76	C2H9BS	013292-87-0	90
3		Ethanethiol	62	C2H6S	000075-08-1	86
4		Ethene, chloro-	62	C2H3Cl	000075-01-4	33
5		Boric acid	62	BH3O3	010043-35-3	9



Data Path : Z:\voasrv\HPCHEM1\MSVOA_D\Data\VD022024\
Data File : VD078485.D
Acq On : 20 Feb 2024 16:05
Operator : RP/MD
Sample : P1523-07
Misc : 5.00G/5ml/MSVOA_D/SOIL/B
ALS Vial : 6 Sample Multiplier: 1

Instrument :
MSVOA_D
ClientSampleId :
20240767-AMENDED-COMP-39N-N-3-02

Quant Method : Z:\voasrv\HPCHEM1\MSVOA_D\Method\82D021324S.M
Quant Title : SW846 8260

TIC Library : C:\Database\NIST20.L
TIC Integration Parameters: LSCINT.P

TIC Top Hit name	RT	EstConc	Units	Response	--Internal Standard--			
					#	RT	Resp	Conc
Methylamine, N,...	2.634	6.6	ug/l	40865	1	7.875	310649	50.0
Dimethyl sulfide	4.111	38.3	ug/l	237762	1	7.875	310649	50.0