

Data Path : Z:\voasrv\HPCHEM1\MSVOA_D\Data\VD022122\
 Data File : VD072041.D
 Acq On : 21 Feb 2022 19:19
 Operator : VA/SY
 Sample : N1626-12
 Misc : 7.34G/5.00ml/MSVOA_D/SOIL
 ALS Vial : 1 Sample Multiplier: 1

Instrument :
 MSVOA_D
 ClientSampleId :
 CC-B6

Quant Time: Feb 22 01:09:00 2022
 Quant Method : Z:\voasrv\HPCHEM1\MSVOA_D\Method\82D021822S.M
 Quant Title : SW846 8260
 QLast Update : Sat Feb 19 04:05:38 2022
 Response via : Initial Calibration

Compound	R.T.	QIon	Response	Conc	Units	Dev(Min)

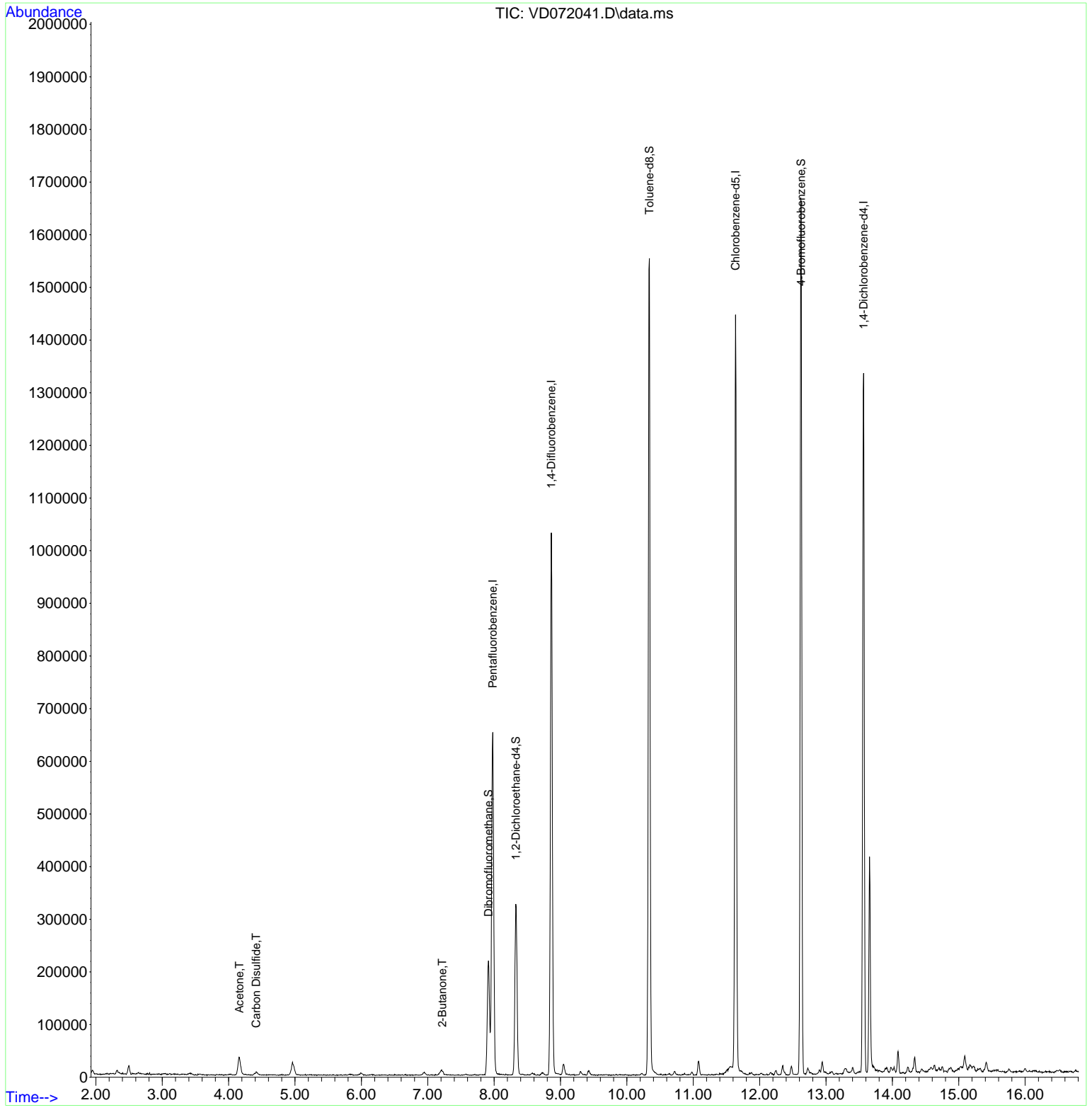
Internal Standards						
1) Pentafluorobenzene	7.979	168	474813	50.000	ug/l	0.00
34) 1,4-Difluorobenzene	8.861	114	863910	50.000	ug/l	0.00
63) Chlorobenzene-d5	11.638	117	820326	50.000	ug/l	0.00
72) 1,4-Dichlorobenzene-d4	13.567	152	363028	50.000	ug/l	0.00
System Monitoring Compounds						
33) 1,2-Dichloroethane-d4	8.326	65	264100	53.622	ug/l	0.00
Spiked Amount	50.000	Range	50 - 163	Recovery	=	107.240%
35) Dibromofluoromethane	7.914	113	156501	29.900	ug/l	0.00
Spiked Amount	50.000	Range	54 - 147	Recovery	=	59.800%
50) Toluene-d8	10.338	98	1061078	54.665	ug/l	0.00
Spiked Amount	50.000	Range	49 - 140	Recovery	=	109.340%
62) 4-Bromofluorobenzene	12.626	95	388835	54.535	ug/l	0.00
Spiked Amount	50.000	Range	25 - 144	Recovery	=	109.060%
Target Compounds						
						Qvalue
16) Acetone	4.162	43	60888	57.203	ug/l	97
17) Carbon Disulfide	4.415	76	9707	1.454	ug/l #	94
25) 2-Butanone	7.220	43	11836	8.045	ug/l #	83

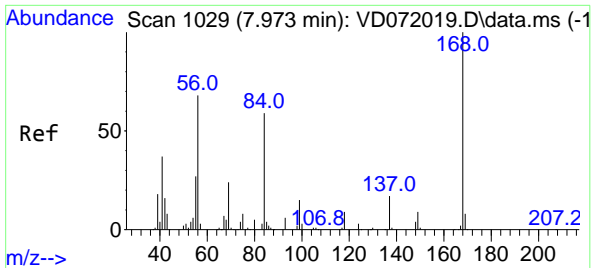
(#) = qualifier out of range (m) = manual integration (+) = signals summed

Data Path : Z:\voasrv\HPCHEM1\MSVOA_D\Data\VD022122\
 Data File : VD072041.D
 Acq On : 21 Feb 2022 19:19
 Operator : VA/SY
 Sample : N1626-12
 Misc : 7.34G/5.00ml/MSVOA_D/SOIL
 ALS Vial : 1 Sample Multiplier: 1

Instrument :
 MSVOA_D
ClientSampleId :
 CC-B6

Quant Time: Feb 22 01:09:00 2022
 Quant Method : Z:\voasrv\HPCHEM1\MSVOA_D\Method\82D021822S.M
 Quant Title : SW846 8260
 QLast Update : Sat Feb 19 04:05:38 2022
 Response via : Initial Calibration

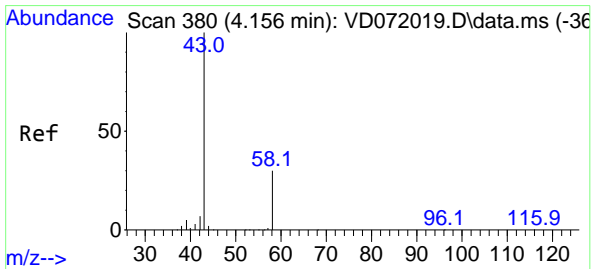
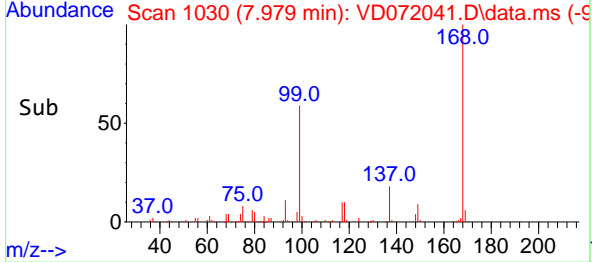
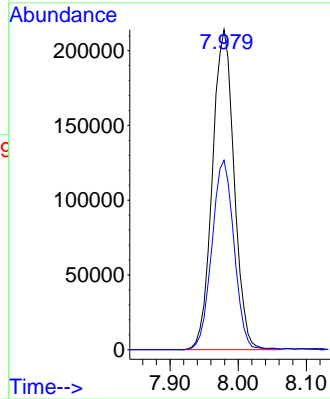
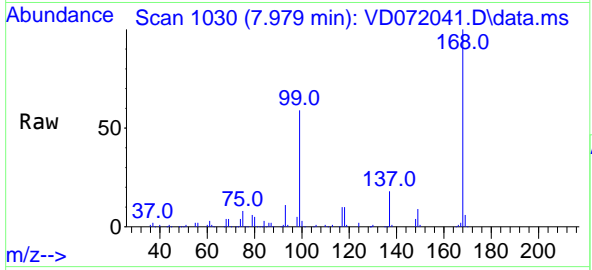




#1
 Pentafluorobenzene
 Concen: 50.000 ug/l
 RT: 7.979 min Scan# 10
 Delta R.T. 0.006 min
 Lab File: VD072041.D
 Acq: 21 Feb 2022 19:19

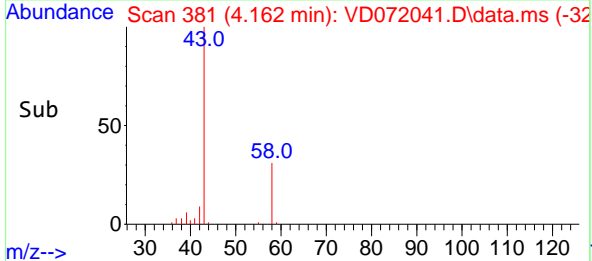
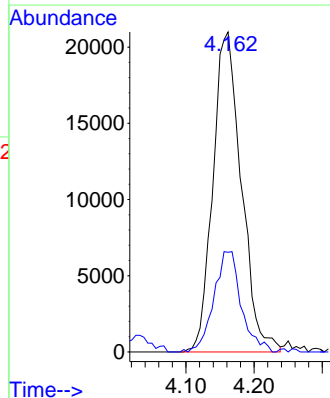
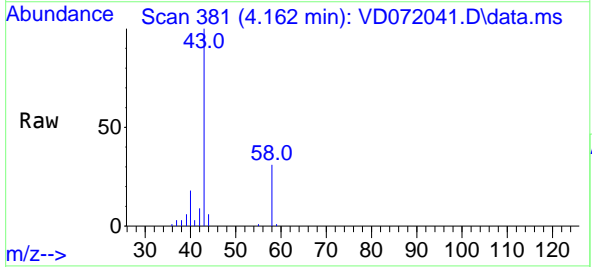
Instrument :
 MSVOA_D
 ClientSampleId :
 CC-B6

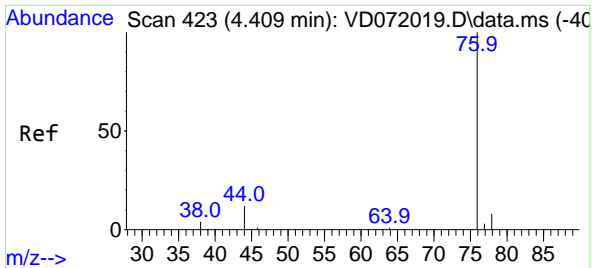
Tgt Ion:168 Resp: 474813
 Ion Ratio Lower Upper
 168 100
 99 59.2 47.1 70.7



#16
 Acetone
 Concen: 57.203 ug/l
 RT: 4.162 min Scan# 381
 Delta R.T. 0.006 min
 Lab File: VD072041.D
 Acq: 21 Feb 2022 19:19

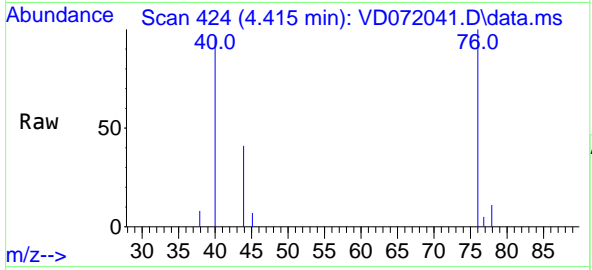
Tgt Ion: 43 Resp: 60888
 Ion Ratio Lower Upper
 43 100
 58 31.2 23.8 35.6



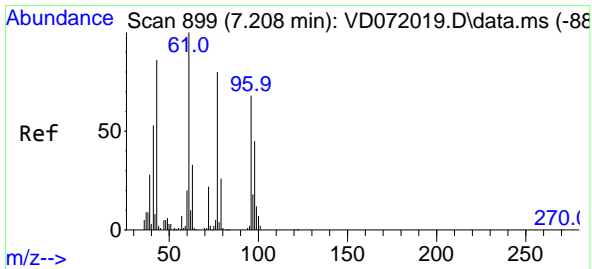
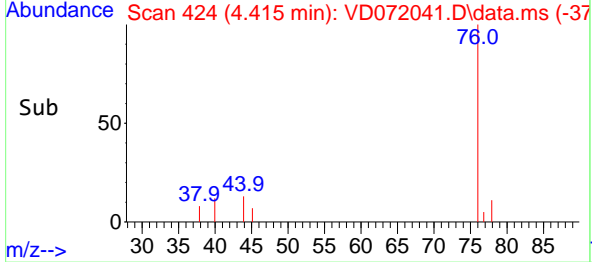
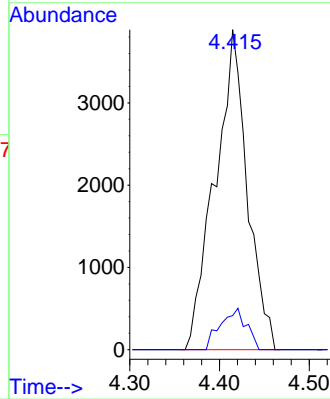


#17
 Carbon Disulfide
 Concen: 1.454 ug/l
 RT: 4.415 min Scan# 41
 Delta R.T. 0.006 min
 Lab File: VD072041.D
 Acq: 21 Feb 2022 19:19

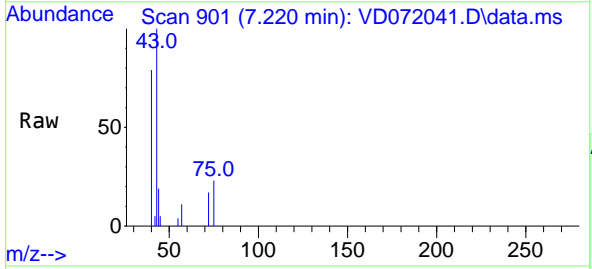
Instrument : MSVOA_D
 ClientSampleId : CC-B6



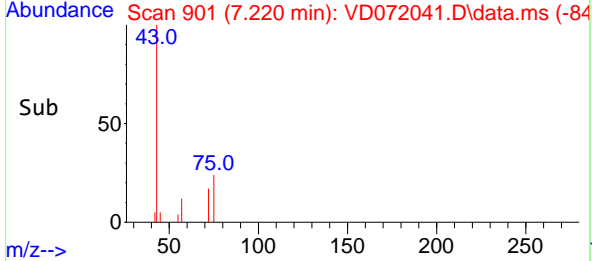
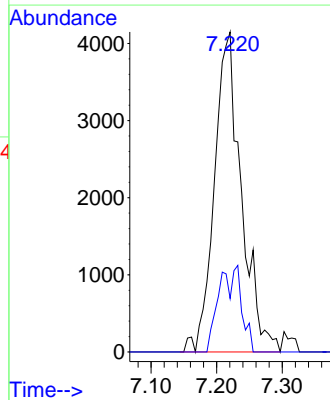
Tgt Ion: 76 Resp: 9707
 Ion Ratio Lower Upper
 76 100
 78 10.7 6.7 10.1#

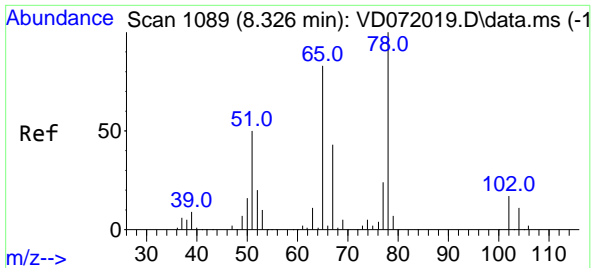


#25
 2-Butanone
 Concen: 8.045 ug/l
 RT: 7.220 min Scan# 901
 Delta R.T. 0.012 min
 Lab File: VD072041.D
 Acq: 21 Feb 2022 19:19



Tgt Ion: 43 Resp: 11836
 Ion Ratio Lower Upper
 43 100
 72 16.7 20.3 30.5#

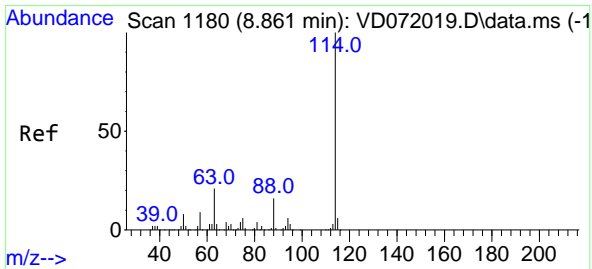
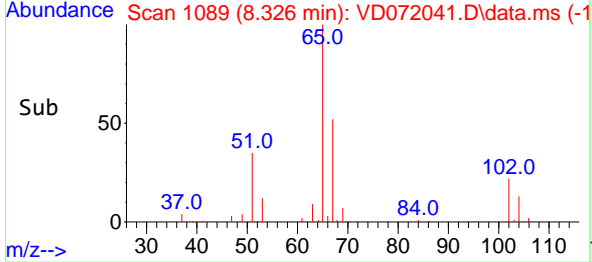
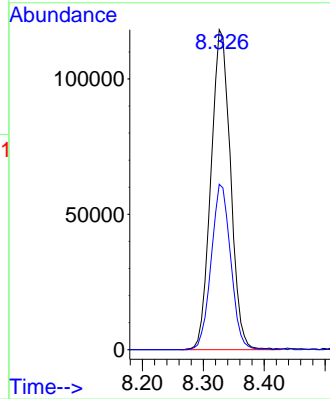
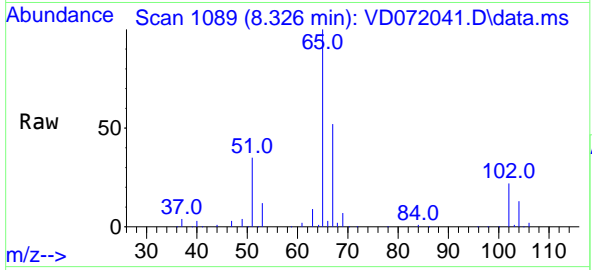




#33
 1,2-Dichloroethane-d4
 Concen: 53.622 ug/l
 RT: 8.326 min Scan# 1089
 Delta R.T. 0.000 min
 Lab File: VD072041.D
 Acq: 21 Feb 2022 19:19

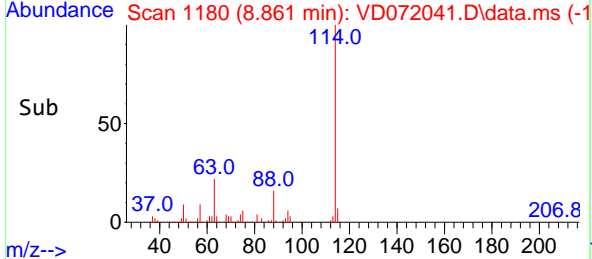
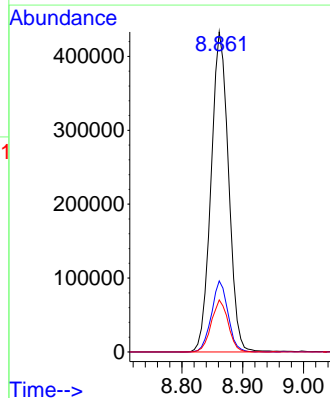
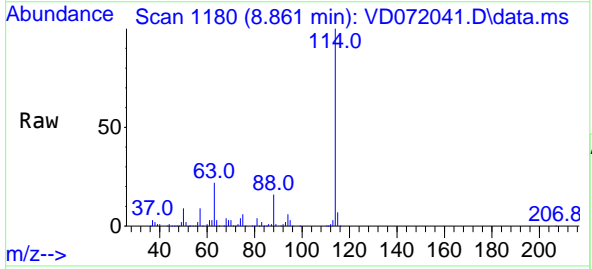
Instrument : MSVOA_D
 ClientSampleId : CC-B6

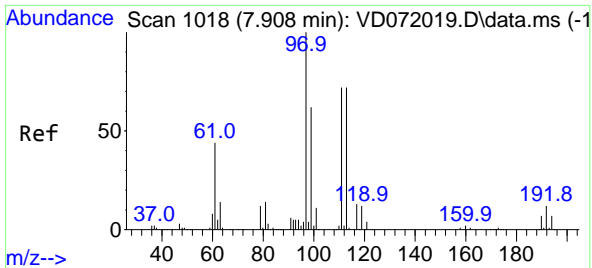
Tgt Ion: 65 Resp: 264100
 Ion Ratio Lower Upper
 65 100
 67 51.4 0.0 105.6



#34
 1,4-Difluorobenzene
 Concen: 50.000 ug/l
 RT: 8.861 min Scan# 1180
 Delta R.T. 0.000 min
 Lab File: VD072041.D
 Acq: 21 Feb 2022 19:19

Tgt Ion: 114 Resp: 863910
 Ion Ratio Lower Upper
 114 100
 63 22.2 0.0 42.2
 88 16.3 0.0 31.2



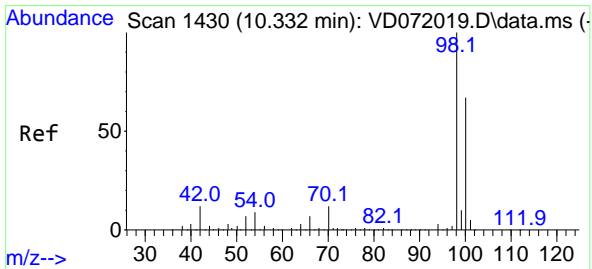
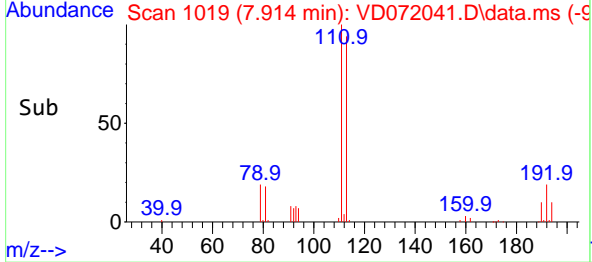
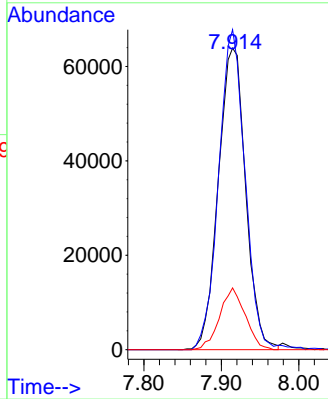
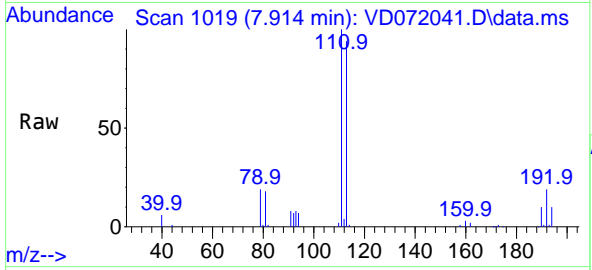


#35
 Dibromofluoromethane
 Concen: 29.900 ug/l
 RT: 7.914 min Scan# 1019
 Delta R.T. 0.006 min
 Lab File: VD072041.D
 Acq: 21 Feb 2022 19:19

Instrument : MSVOA_D
 ClientSampleId : CC-B6

Tgt Ion:113 Resp: 156501

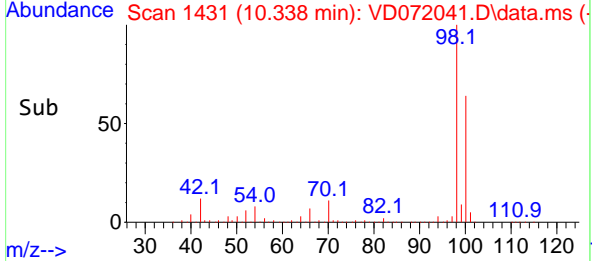
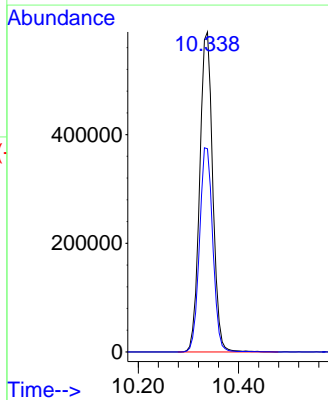
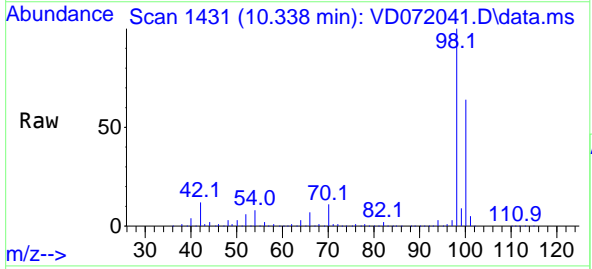
Ion	Ratio	Lower	Upper
113	100		
111	102.3	83.0	124.4
192	19.3	15.3	22.9

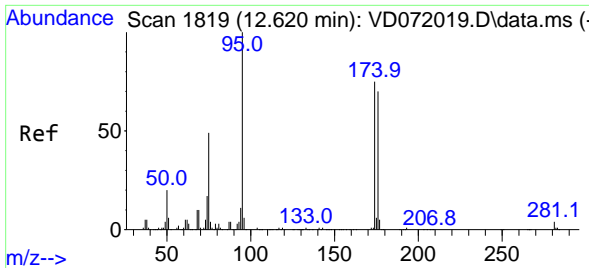


#50
 Toluene-d8
 Concen: 54.665 ug/l
 RT: 10.338 min Scan# 1431
 Delta R.T. 0.006 min
 Lab File: VD072041.D
 Acq: 21 Feb 2022 19:19

Tgt Ion: 98 Resp: 1061078

Ion	Ratio	Lower	Upper
98	100		
100	65.1	53.8	80.6



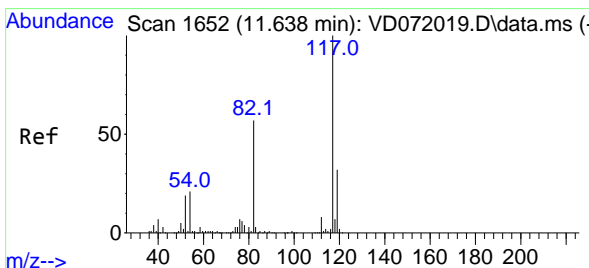
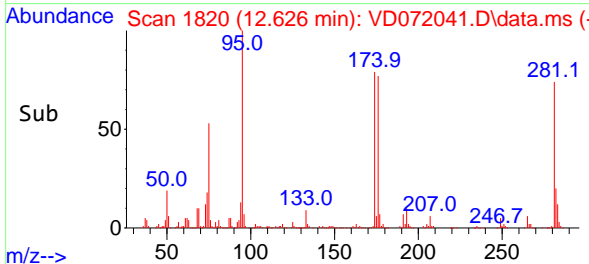
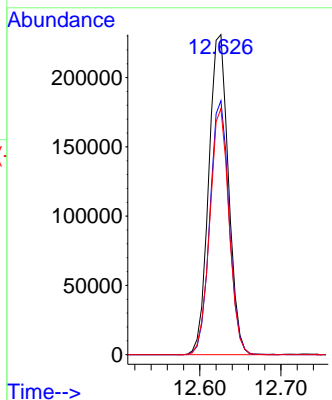
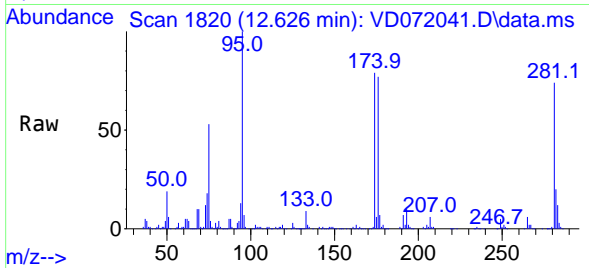


#62
 4-Bromofluorobenzene
 Concen: 54.535 ug/l
 RT: 12.626 min Scan# 1819
 Delta R.T. 0.006 min
 Lab File: VD072041.D
 Acq: 21 Feb 2022 19:19

Instrument : MSVOA_D
 ClientSampleId : CC-B6

Tgt Ion: 95 Resp: 388835

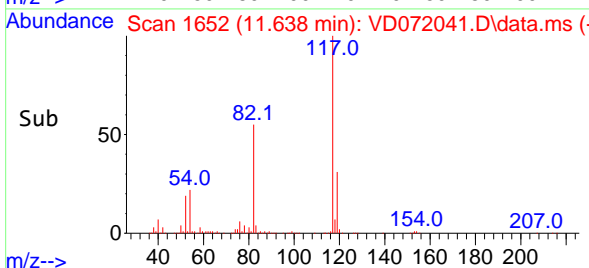
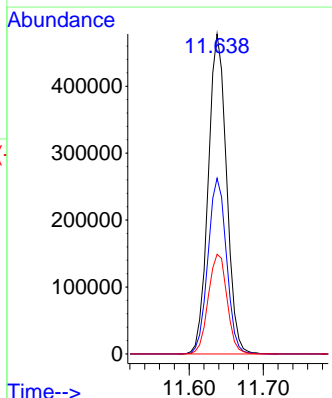
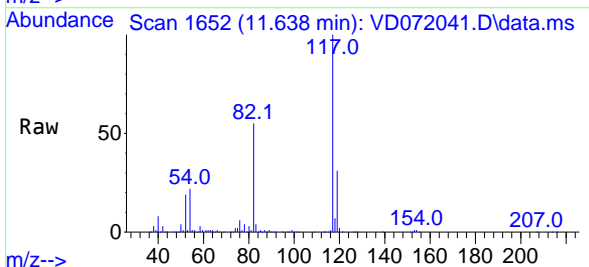
Ion	Ratio	Lower	Upper
95	100		
174	77.2	0.0	155.0
176	74.9	0.0	148.8

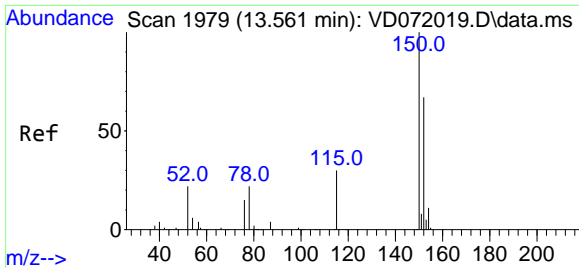


#63
 Chlorobenzene-d5
 Concen: 50.000 ug/l
 RT: 11.638 min Scan# 1652
 Delta R.T. 0.000 min
 Lab File: VD072041.D
 Acq: 21 Feb 2022 19:19

Tgt Ion: 117 Resp: 820326

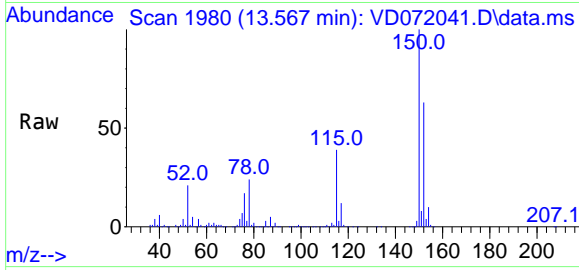
Ion	Ratio	Lower	Upper
117	100		
82	54.9	45.4	68.0
119	31.2	25.4	38.2





#72
 1,4-Dichlorobenzene-d4
 Concen: 50.000 ug/l
 RT: 13.567 min Scan# 1979
 Delta R.T. 0.006 min
 Lab File: VD072041.D
 Acq: 21 Feb 2022 19:19

Instrument : MSVOA_D
 ClientSampleId : CC-B6



Tgt Ion:152 Resp: 363028

Ion	Ratio	Lower	Upper
152	100		
115	60.3	29.9	89.7
150	157.9	0.0	347.6

