

Data Path : Z:\VOASRV\HPCHEM1\MSVOA D\DATA\VD032019\
 Data File : VD061209.D
 Acq On : 20 Mar 2019 15:45
 Operator : VA/AP
 Sample : K1980-01RE
 Misc : 5.02g/5ml/MSVOA D/SOIL
 ALS Vial : 12 Sample Multiplier: 1

Instrument :
 MSVOA_D
 ClientSampleID :
 WCXY2RE

Quant Time: Mar 22 02:31:13 2019
 Quant Method : Z:\VOASRV\HPCHEM1\MSVOA_D\METHOD\82D030719S.M
 Quant Title : SW846 8260
 QLast Update : Fri Mar 08 02:35:39 2019
 Response via : Initial Calibration

Internal Standards	R.T.	QIon	Response	Conc	Units	Dev(Min)
1) Pentafluorobenzene	7.04	168	178318	50.00	ug/l	0.00
34) 1,4-Difluorobenzene	8.21	114	316003	50.00	ug/l	0.00
63) Chlorobenzene-d5	12.36	117	77506	50.00	ug/l	0.00
72) 1,4-Dichlorobenzene-d4	14.51	152	90354	50.00	ug/l	0.00

System Monitoring Compounds

33) 1,2-Dichloroethane-d4	7.45	65	123239	83.03	ug/l	0.00
Spiked Amount				50.000		
			Recovery	=	166.06%	
35) Dibromofluoromethane	6.91	113	161472	68.85	ug/l	-0.01
Spiked Amount				50.000		
			Recovery	=	137.70%	
50) Toluene-d8	10.40	98	133799	22.72	ug/l	0.00
Spiked Amount				50.000		
			Recovery	=	45.44%	
62) 4-Bromofluorobenzene	13.55	95	109676	48.00	ug/l	0.00
Spiked Amount				50.000		
			Recovery	=	96.00%	

Target Compounds

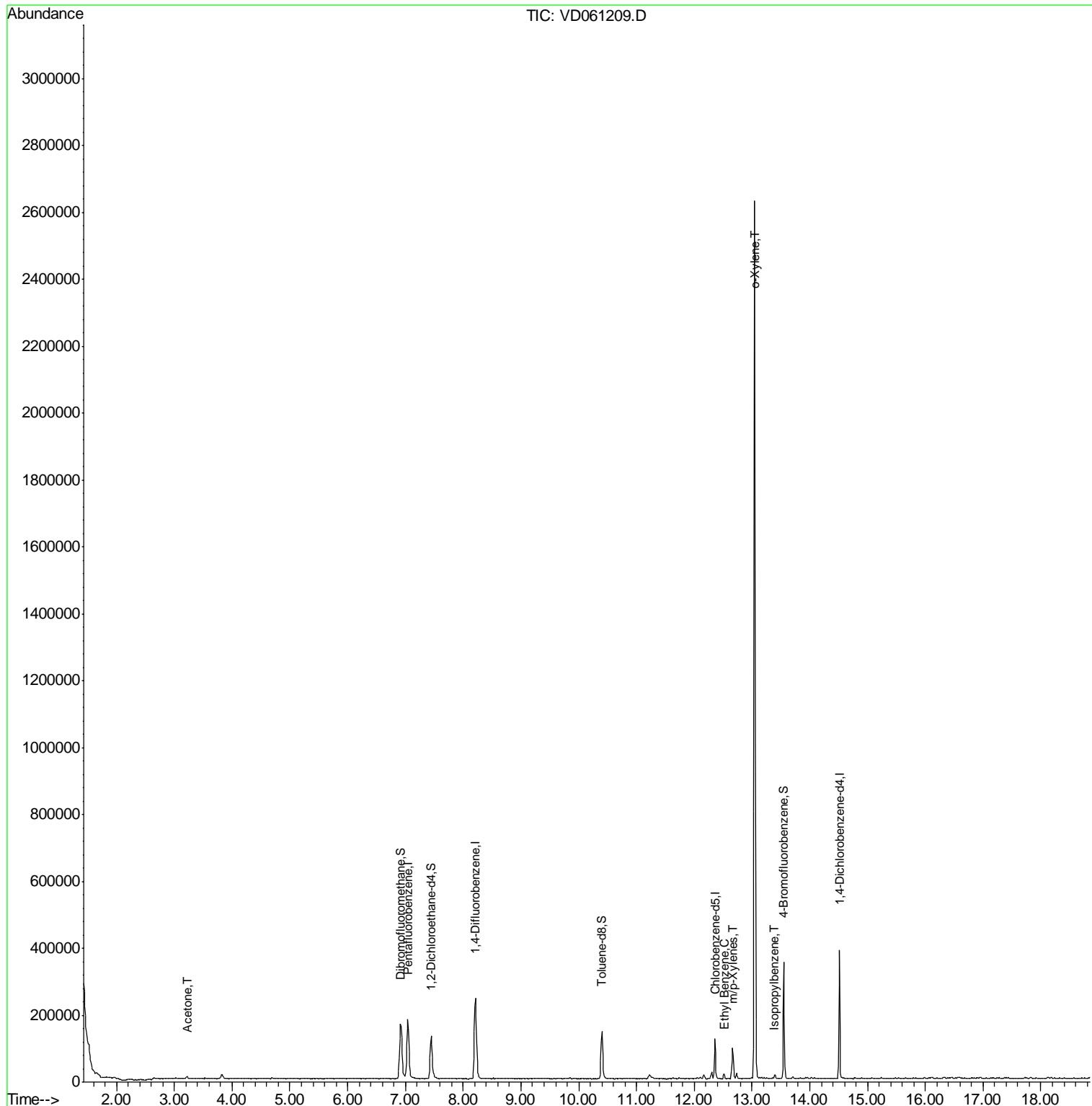
						Qvalue
16) Acetone	3.22	43	10033	23.638	ug/l	# 89
67) Ethyl Benzene	12.52	91	10263	4.537	ug/l	91
68) m/p-Xylenes	12.66	106	28431	32.022	ug/l	83
69) o-Xylene	13.05	106	764478	875.965	ug/l	100
73) Isopropylbenzene	13.39	105	7214	1.108	ug/l	99

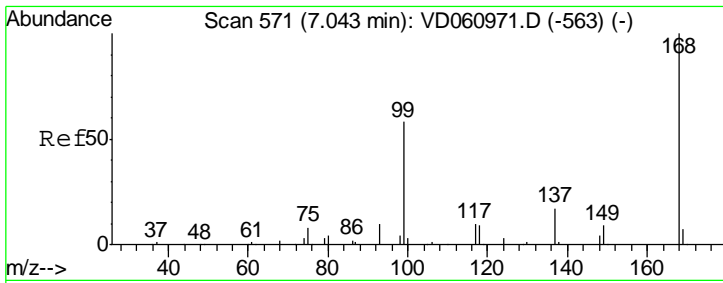
(#) = qualifier out of range (m) = manual integration (+) = signals summed

Data Path : Z:\VOASRV\HPCHEM1\MSVOA D\DATA\VD032019\
 Data File : VD061209.D
 Acq On : 20 Mar 2019 15:45
 Operator : VA/AP
 Sample : K1980-01RE
 Misc : 5.02µ/5ml/MSVOA D/SOIL
 ALS Vial : 12 Sample Multiplier: 1

Instrument :
 MSVOA_D
 ClientSampleId :
 WCXY2RE

Quant Time: Mar 22 02:31:13 2019
 Quant Method : Z:\VOASRV\HPCHEM1\MSVOA_D\METHOD\82D030719S.M
 Quant Title : SW846 8260
 QLast Update : Fri Mar 08 02:35:39 2019
 Response via : Initial Calibration

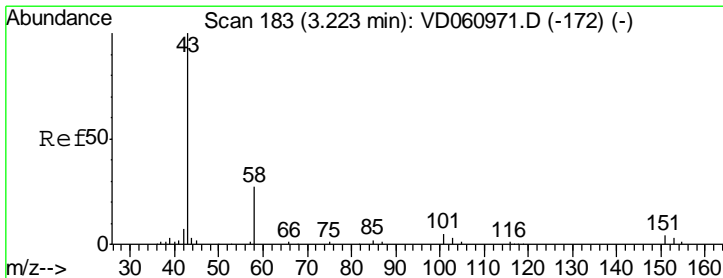
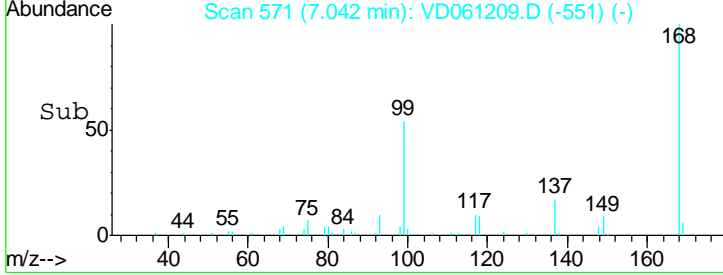
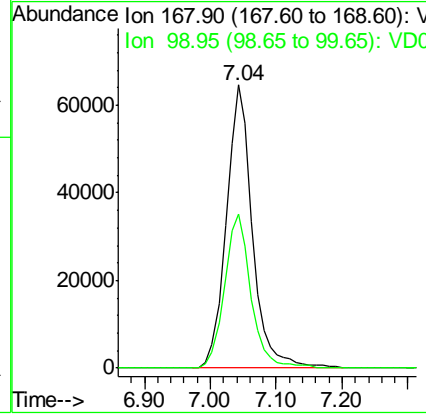
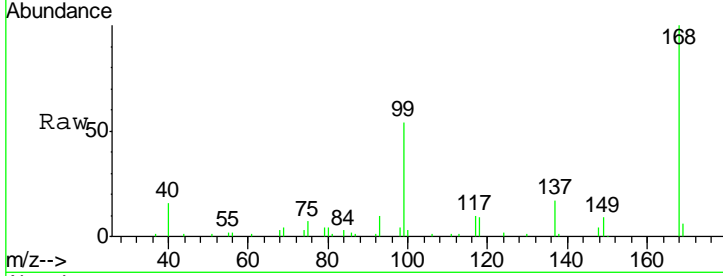




#1
 Pentafluorobenzene
 Concen: 50.000 ug/l
 RT: 7.04 min Scan# 571
 Delta R.T. -0.00 min
 Lab File: VD061209.D
 Acq: 20 Mar 2019 15:45

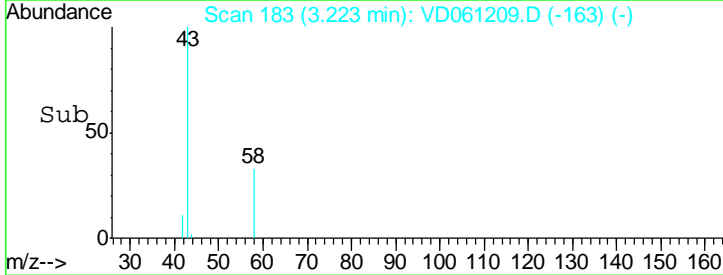
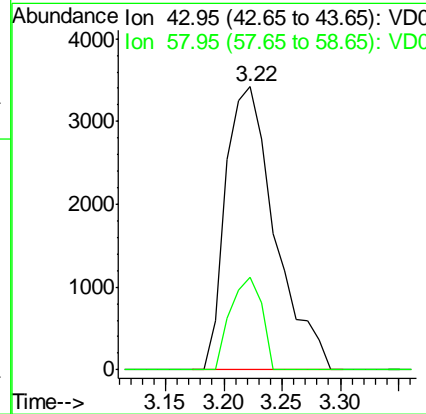
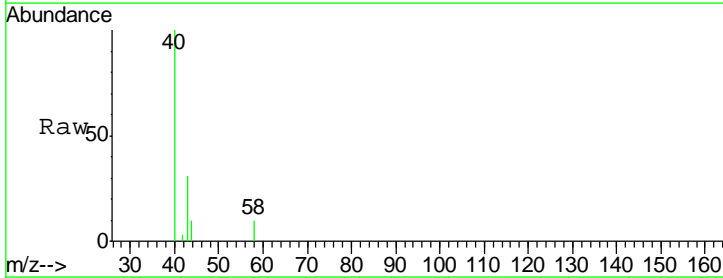
Instrument :
 MSVOA_D
 ClientSampleID :
 WCXY2RE

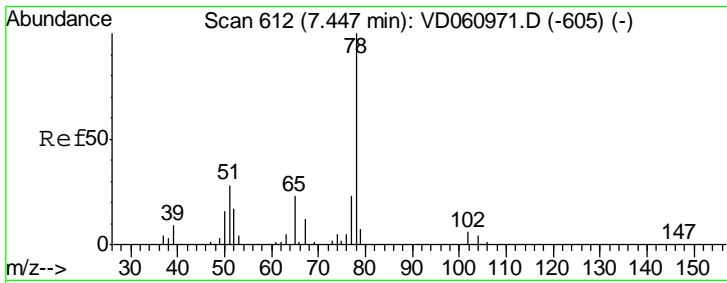
Tot Ion: 168 Resp: 178318
 Ion Ratio Lower Upper
 168 100
 99 54.4 47.3 70.9



#16
 Acetone
 Concen: 23.638 ug/l
 RT: 3.22 min Scan# 183
 Delta R.T. -0.00 min
 Lab File: VD061209.D
 Acq: 20 Mar 2019 15:45

Tgt Ion: 43 Resp: 10033
 Ion Ratio Lower Upper
 43 100
 58 32.8 21.6 32.4#

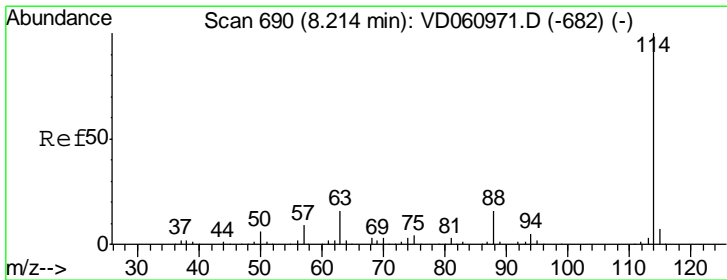
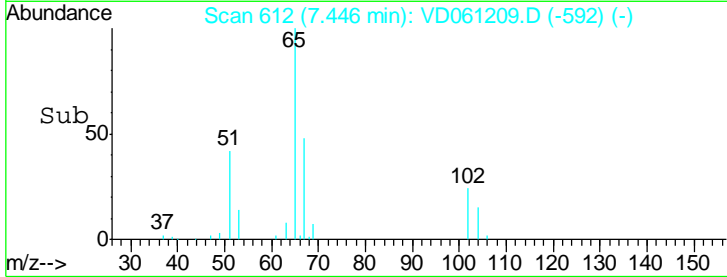
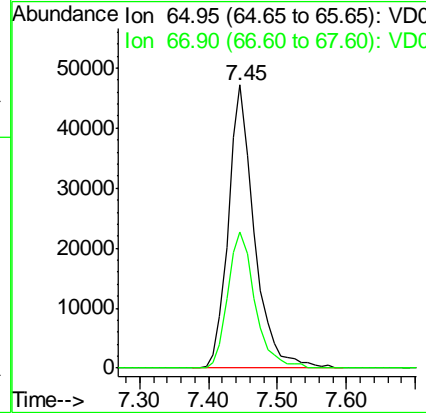
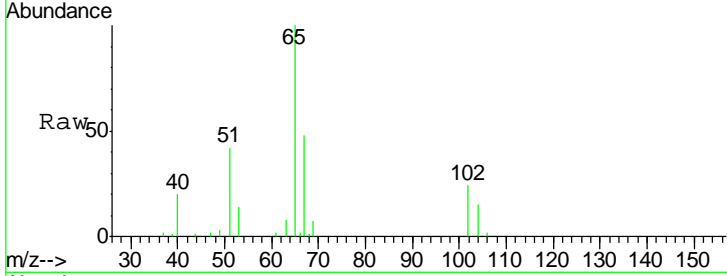




#33
 1,2-Dichloroethane-d4
 Concen: N.D. ug/l
 RT: 7.45 min Scan# 612
 Delta R.T. -0.00 min
 Lab File: VD061209.D
 Acq: 20 Mar 2019 15:45

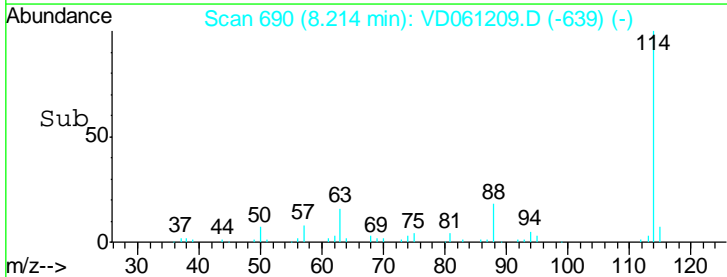
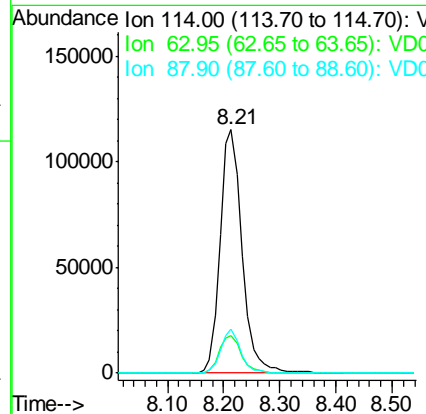
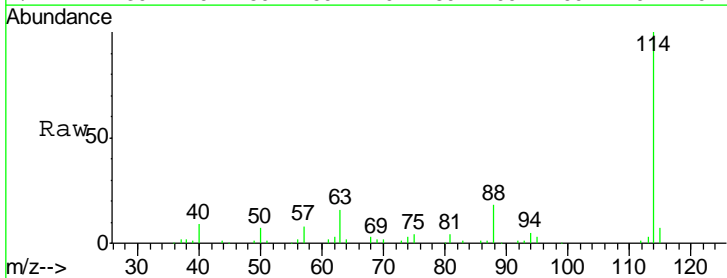
Instrument :
 MSVOA_D
 ClientSampled :
 WCXY2RE

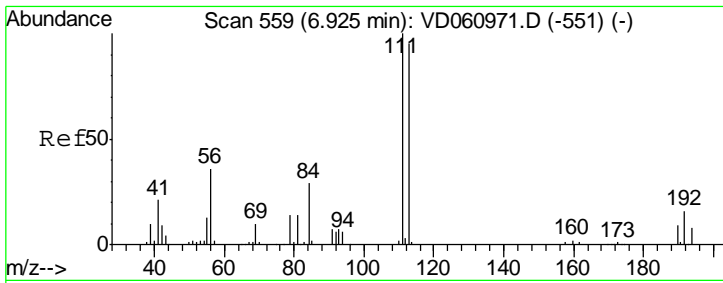
Tgt Ion	Resp	Lower	Upper
65	100		
67	47.9	0.0	105.2



#34
 1,4-Difluorobenzene
 Concen: 50.000 ug/l
 RT: 8.21 min Scan# 690
 Delta R.T. -0.00 min
 Lab File: VD061209.D
 Acq: 20 Mar 2019 15:45

Tgt Ion	Resp	Lower	Upper
114	100		
63	15.5	0.0	31.4
88	18.1	0.0	33.0

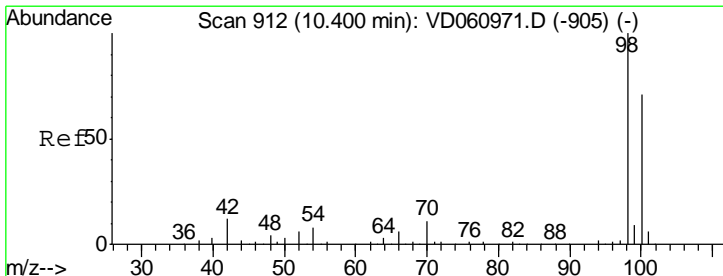
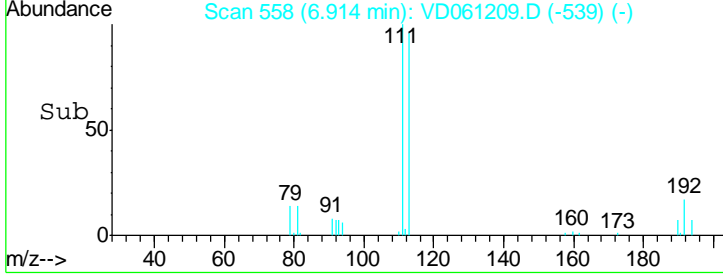
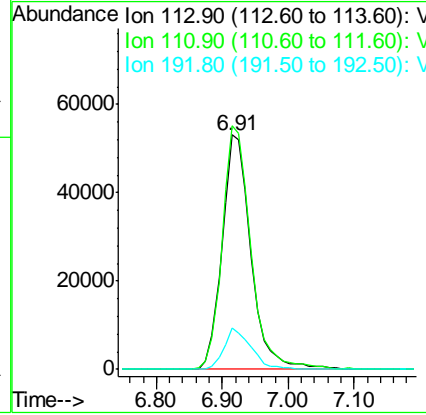
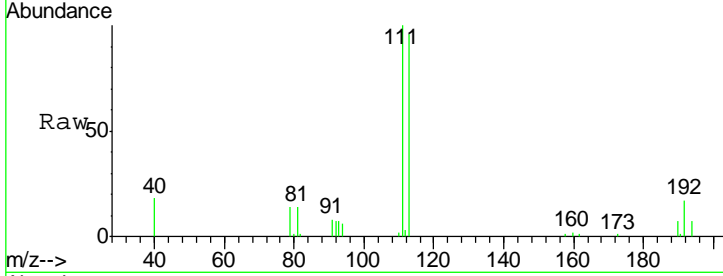




#35
 Dibromofluoromethane
 Concen: 50.000 ug/l
 RT: 6.91 min Scan# 558
 Delta R.T. -0.01 min
 Lab File: VD061209.D
 Acq: 20 Mar 2019 15:45

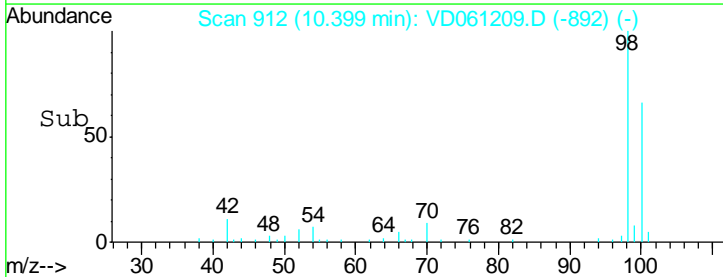
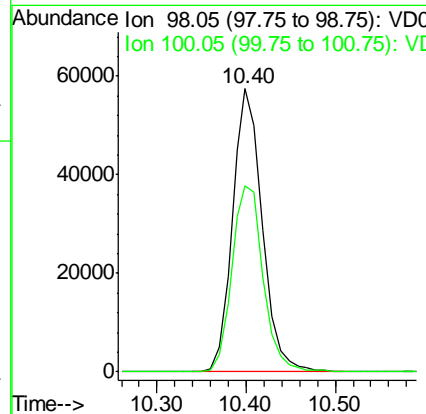
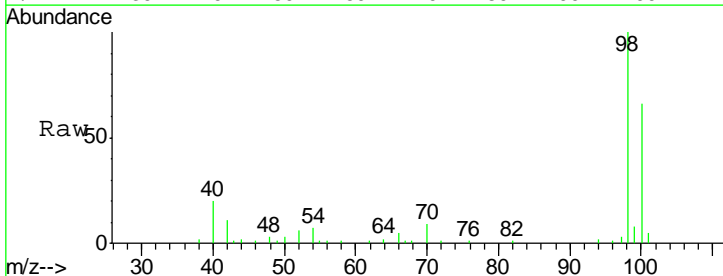
Instrument :
 MSVOA_D
ClientSampled :
 WCXY2RE

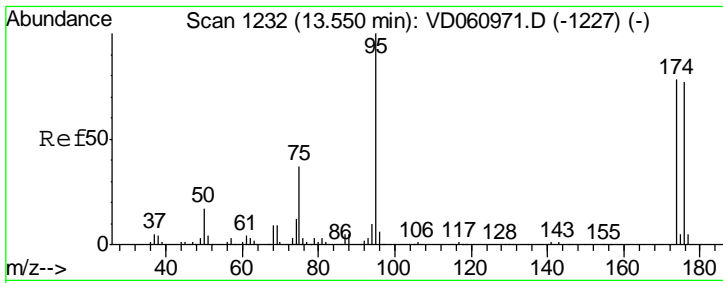
Tgt Ion	Resp	Lower	Upper
113	161472		
111	103.8	84.2	126.4
192	17.4	13.1	19.7



#50
 Toluene-d8
 Concen: N.D. ug/l
 RT: 10.40 min Scan# 912
 Delta R.T. -0.00 min
 Lab File: VD061209.D
 Acq: 20 Mar 2019 15:45

Tgt Ion	Resp	Lower	Upper
98	133799		
100	65.7	57.4	86.2

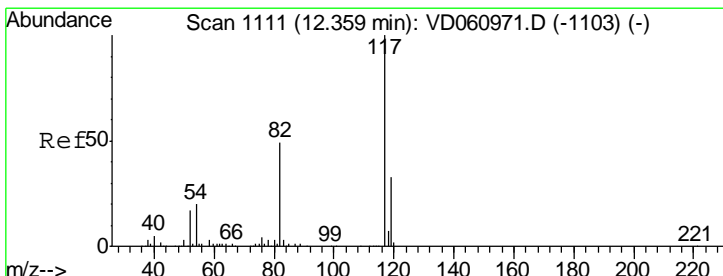
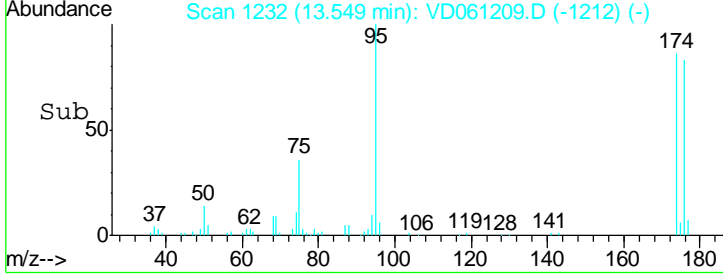
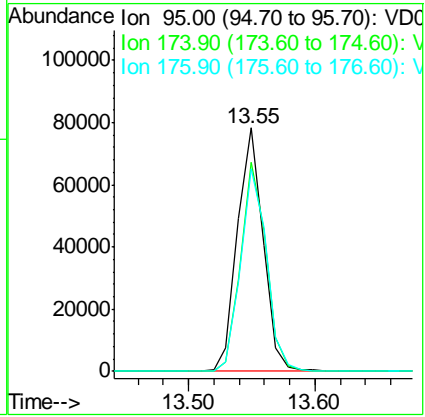
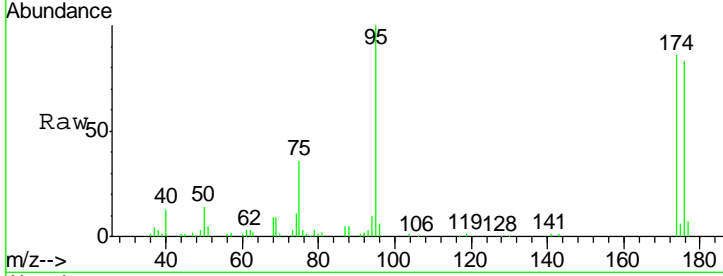




#62
 4-Bromofluorobenzene
 Concen: N.D. ug/l
 RT: 13.55 min Scan# 1232
 Delta R.T. -0.00 min
 Lab File: VD061209.D
 Acq: 20 Mar 2019 15:45

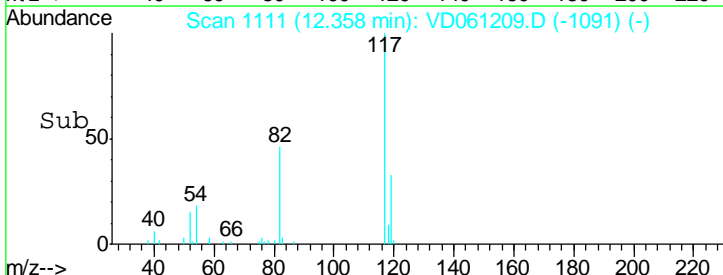
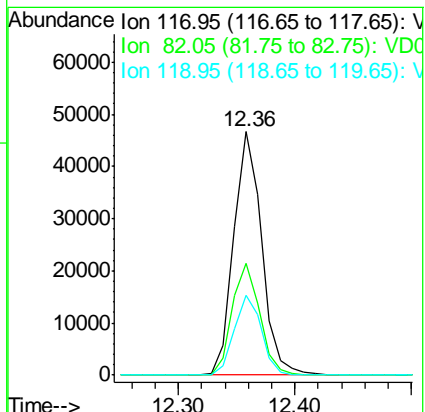
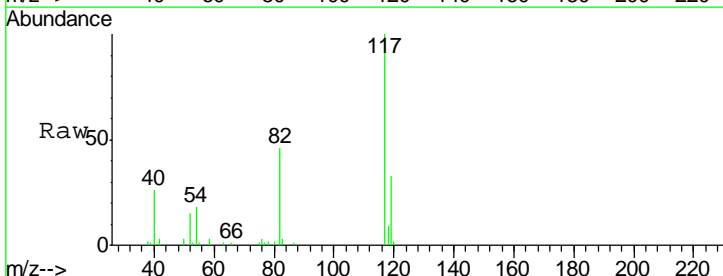
Instrument : MSVOA_D
 ClientSampled : WCXY2RE

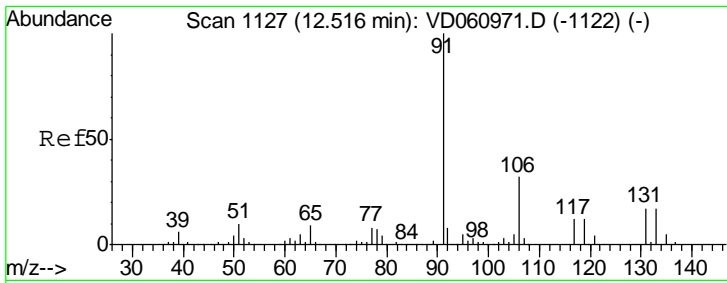
Tgt Ion	Resp	Lower	Upper
95	109676		
174	86.0	0.0	155.6
176	83.2	0.0	153.8



#63
 Chlorobenzene-d5
 Concen: 50.000 ug/l
 RT: 12.36 min Scan# 1111
 Delta R.T. -0.00 min
 Lab File: VD061209.D
 Acq: 20 Mar 2019 15:45

Tgt Ion	Resp	Lower	Upper
117	77506		
82	45.7	38.9	58.3
119	32.9	26.6	39.8

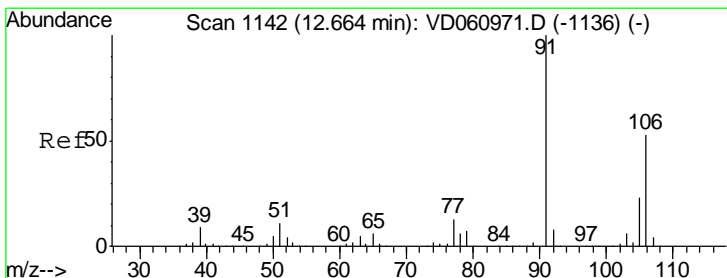
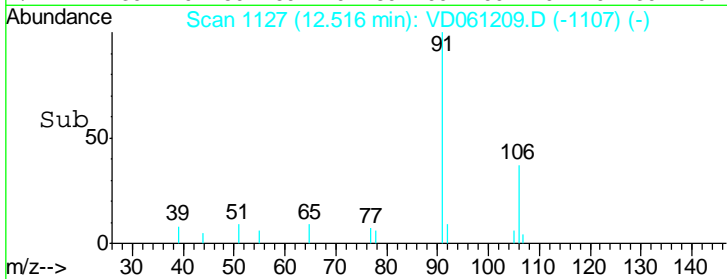
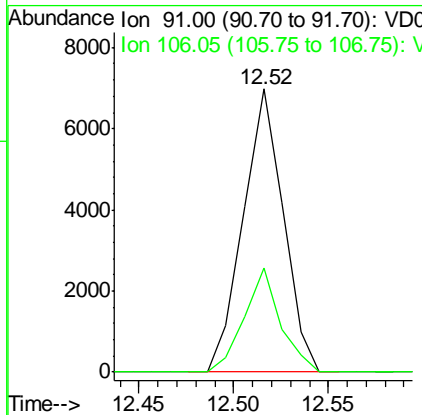
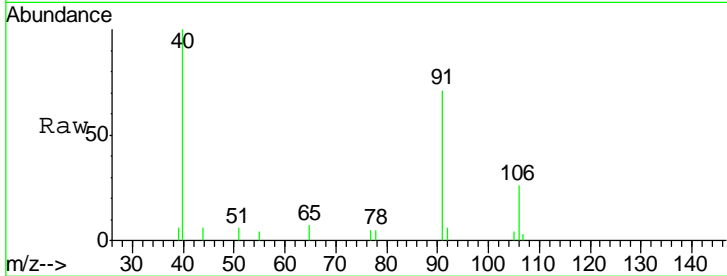




#67
Ethyl Benzene
Concen: 4.537 ug/l
RT: 12.52 min Scan# 1127
Delta R.T. -0.00 min
Lab File: VD061209.D
Acq: 20 Mar 2019 15:45

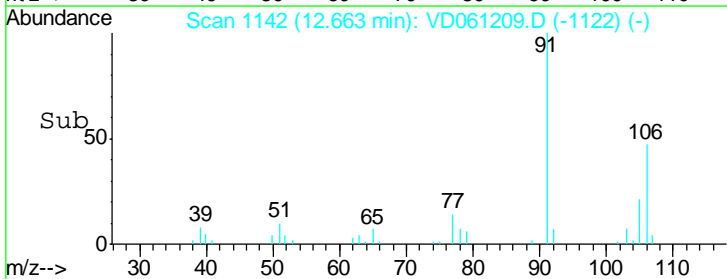
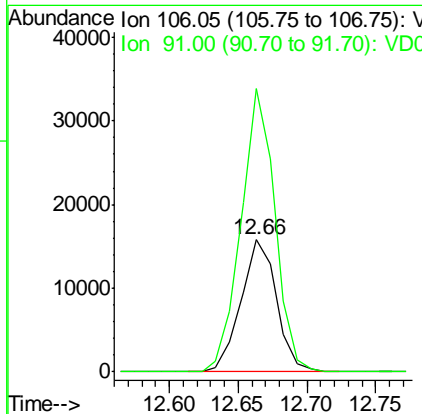
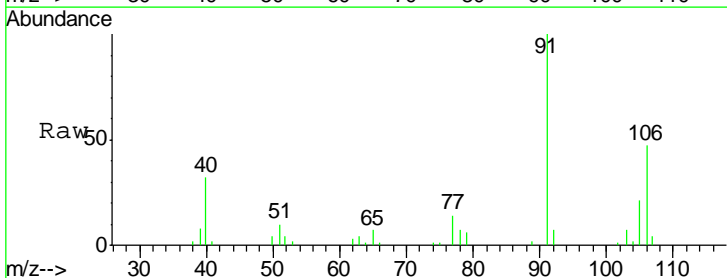
Instrument :
MSVOA_D
ClientSampled :
WCXY2RE

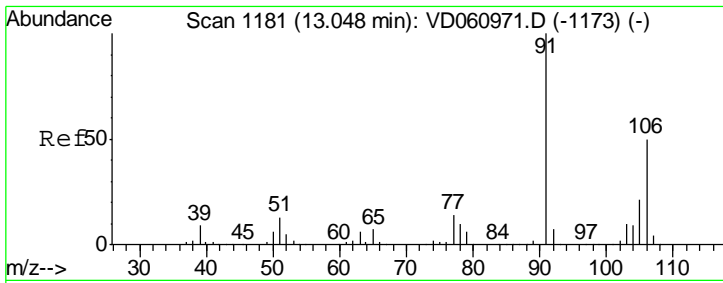
Tgt Ion: 91 Resp: 10263
Ion Ratio Lower Upper
91 100
106 36.9 25.7 38.5



#68
m/p-Xylenes
Concen: 32.022 ug/l
RT: 12.66 min Scan# 1142
Delta R.T. -0.00 min
Lab File: VD061209.D
Acq: 20 Mar 2019 15:45

Tgt Ion: 106 Resp: 28431
Ion Ratio Lower Upper
106 100
91 214.2 152.0 228.0

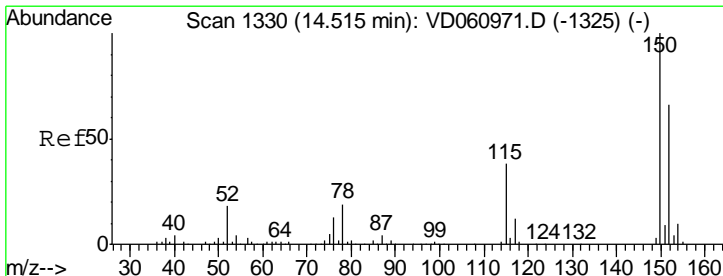
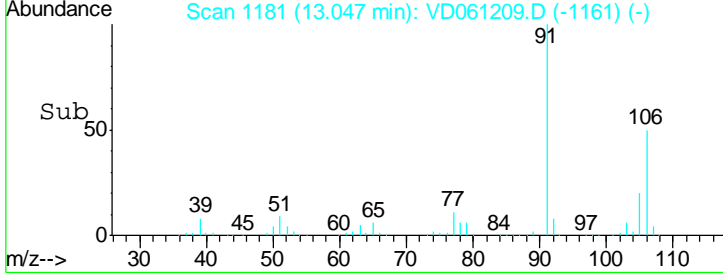
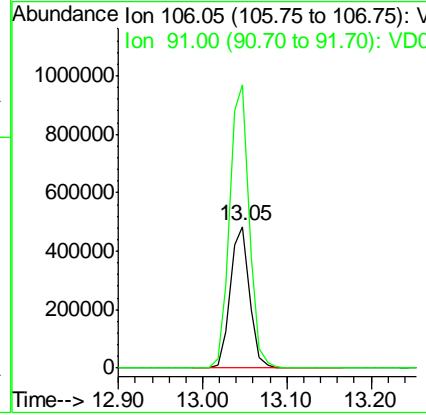
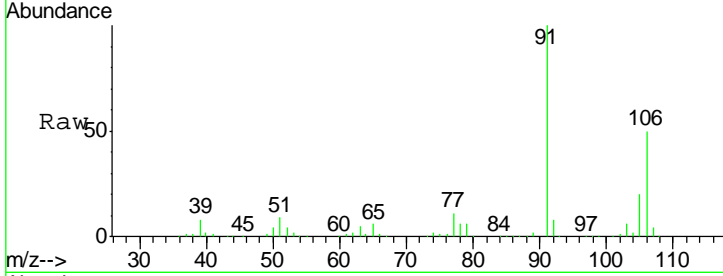




#69
 o-Xylene
 Concen: 875.965 ug/l
 RT: 13.05 min Scan# 1181
 Delta R.T. -0.00 min
 Lab File: VD061209.D
 Acq: 20 Mar 2019 15:45

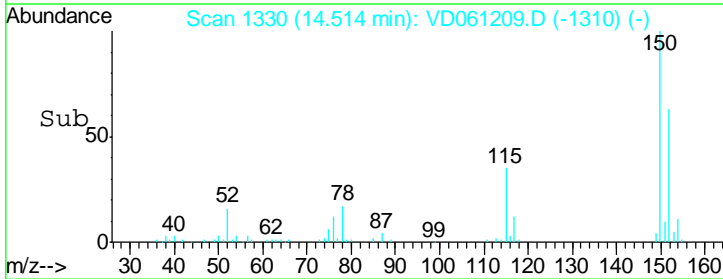
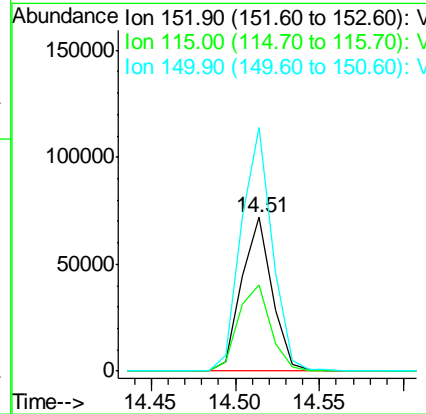
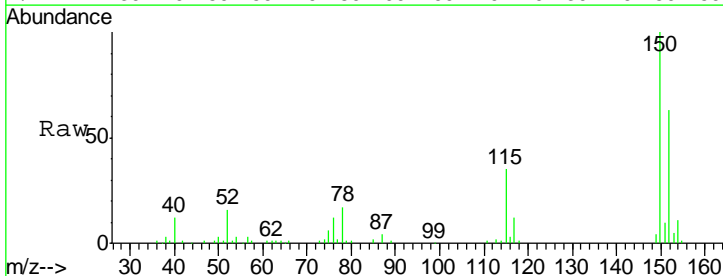
Instrument : MSVOA_D
 ClientSampled : WCXY2RE

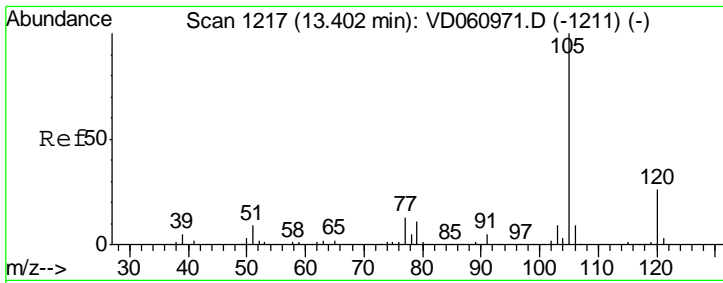
Tgt Ion	Resp	Lower	Upper
106	100		
91	200.1	99.8	299.3



#72
 1,4-Dichlorobenzene-d4
 Concen: 50.000 ug/l
 RT: 14.51 min Scan# 1330
 Delta R.T. -0.00 min
 Lab File: VD061209.D
 Acq: 20 Mar 2019 15:45

Tgt Ion	Resp	Lower	Upper
152	100		
115	56.2	28.6	85.9
150	158.4	0.0	310.6





#73
 Isopropylbenzene
 Concen: 1.108 ug/l
 RT: 13.39 min Scan# 1216
 Delta R.T. -0.01 min
 Lab File: VD061209.D
 Acq: 20 Mar 2019 15:45

Instrument : MSVOA_D
 ClientSampleId : WCXY2RE

Tot Ion	Resp	Lower	Upper
105	7214		
105	100		
120	24.9	12.8	38.4

