

Data Path : Z:\VOASRV\HPCHEM1\MSVOA D\DATA\VD032019\
 Data File : VD061227.D
 Acq On : 21 Mar 2019 1:53
 Operator : VA/AP
 Sample : K1688-21
 Misc : 7.60µ/5ml/MSVOA D/SOIL
 ALS Vial : 34 Sample Multiplier: 1

Instrument :
 MSVOA_D
 ClientSampleId :
 JC-02-031919-A

Quant Time: Mar 22 02:06:33 2019
 Quant Method : Z:\VOASRV\HPCHEM1\MSVOA_D\METHOD\82D030719S.M
 Quant Title : SW846 8260
 QLast Update : Fri Mar 08 02:35:39 2019
 Response via : Initial Calibration

Internal Standards	R.T.	QIon	Response	Conc	Units	Dev(Min)
1) Pentafluorobenzene	7.03	168	8201	50.00	µg/l	-0.01
34) 1,4-Difluorobenzene	8.20	114	17638	50.00	µg/l	-0.01
63) Chlorobenzene-d5	12.36	117	16743	50.00	µg/l	0.00
72) 1,4-Dichlorobenzene-d4	14.51	152	7869	50.00	µg/l	0.00

System Monitoring Compounds

33) 1,2-Dichloroethane-d4	7.44	65	4664	68.32	µg/l	-0.01
Spiked Amount	50.000		Recovery	= 136.64%		
35) Dibromofluoromethane	6.90	113	5506	42.06	µg/l	-0.02
Spiked Amount	50.000		Recovery	= 84.12%		
50) Toluene-d8	10.40	98	11925	36.28	µg/l	0.00
Spiked Amount	50.000		Recovery	= 72.56%		
62) 4-Bromofluorobenzene	13.55	95	5764	45.19	µg/l	0.00
Spiked Amount	50.000		Recovery	= 90.38%		

Target Compounds

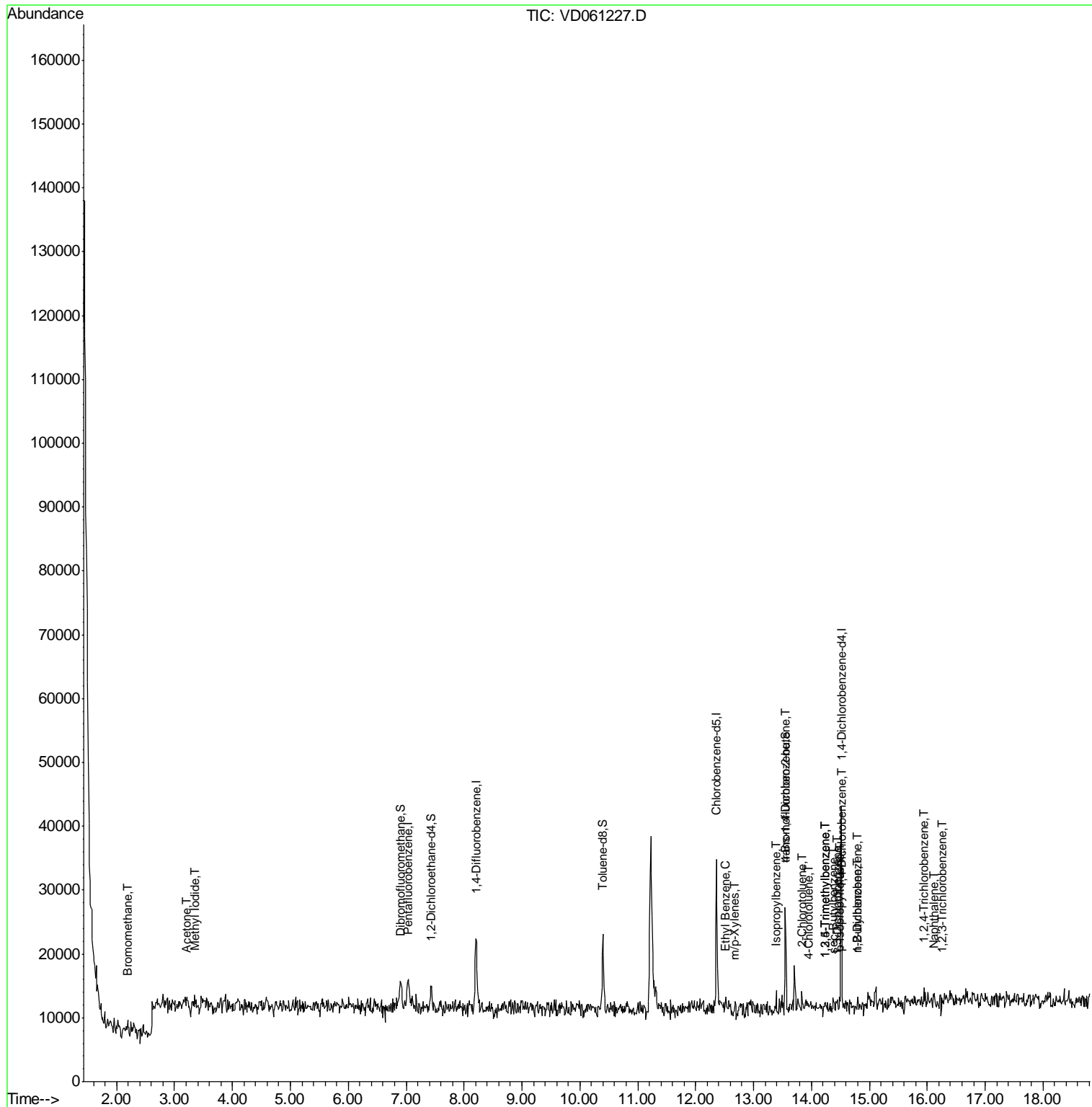
					Qvalue	
5) Bromomethane	2.19	94	222	17.339	µg/l	# 8
10) Methyl Iodide	3.35	142	1728	14.695	µg/l	# 87
16) Acetone	3.21	43	1474	75.510	µg/l	# 48
20) Methylene Chloride	3.81	84	199	Below Cal		# 4
67) Ethyl Benzene	12.52	91	770	1.576	µg/l	# 43
68) m/p-Xylenes	12.66	106	227	1.184	µg/l	# 39
73) Isopropylbenzene	13.39	105	693	1.222	µg/l	# 49
79) 2-Chlorotoluene	13.83	91	457	1.250	µg/l	# 38
80) 1,3,5-Trimethylbenzene	14.23	105	490	1.138	µg/l	# 31
81) trans-1,4-Dichloro-2-buten	13.55	75	1708	51.174	µg/l	# 17
82) 4-Chlorotoluene	13.94	91	550	1.273	µg/l	# 39
84) 1,2,4-Trimethylbenzene	14.23	105	490	1.138	µg/l	# 31
85) sec-Butylbenzene	14.37	105	791	1.375	µg/l	# 58
86) p-Isopropyltoluene	14.48	119	636	1.353	µg/l	# 52
87) 1,3-Dichlorobenzene	14.45	146	520	2.012	µg/l	# 76
88) 1,4-Dichlorobenzene	14.53	146	472	1.858	µg/l	# 34
89) n-Butylbenzene	14.79	91	750	1.661	µg/l	# 29
91) 1,2-Dichlorobenzene	14.80	146	452	2.097	µg/l	# 25
93) 1,2,4-Trichlorobenzene	15.94	180	287	2.871	µg/l	# 26
95) Naphthalene	16.12	128	1844	12.138	µg/l	# 70
96) 1,2,3-Trichlorobenzene	16.27	180	239	4.840	µg/l	# 11

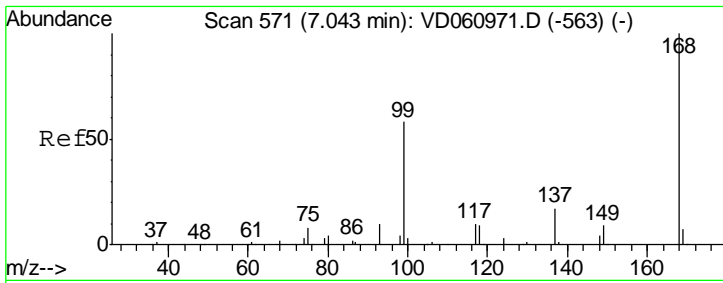
(#) = qualifier out of range (m) = manual integration (+) = signals summed

Data Path : Z:\VOASRV\HPCHEM1\MSVOA D\DATA\VD032019\
 Data File : VD061227.D
 Acq On : 21 Mar 2019 1:53
 Operator : VA/AP
 Sample : K1688-21
 Misc : 7.60µ/5ml/MSVOA D/SOIL
 ALS Vial : 34 Sample Multiplier: 1

Instrument :
 MSVOA_D
 Client Sampled :
 JC-02-031919-A

Quant Time: Mar 22 02:06:33 2019
 Quant Method : Z:\VOASRV\HPCHEM1\MSVOA_D\METHOD\82D030719S.M
 Quant Title : SW846 8260
 QLast Update : Fri Mar 08 02:35:39 2019
 Response via : Initial Calibration



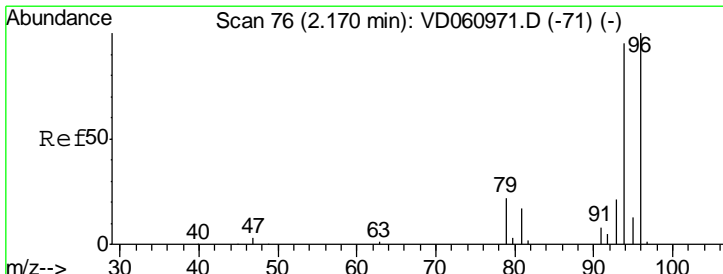
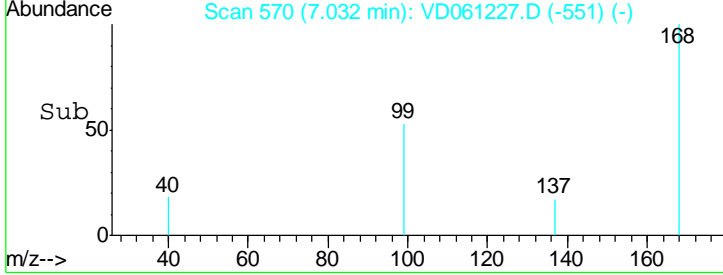
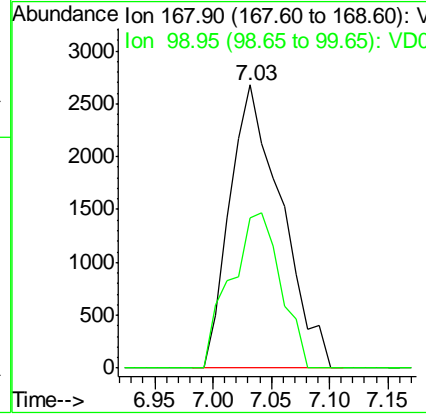
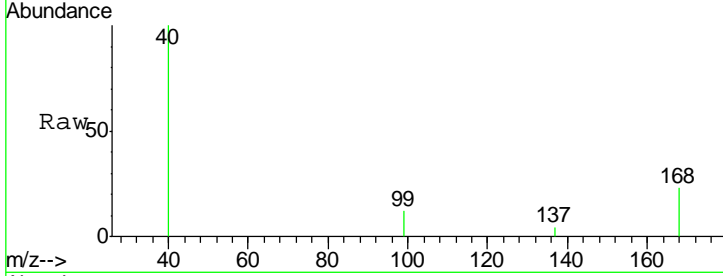


#1
 Pentafluorobenzene
 Concen: 50.000 ug/l
 RT: 7.03 min Scan# 570
 Delta R.T. -0.01 min
 Lab File: VD061227.D
 Acq: 21 Mar 2019 1:53

Instrument : MSVOA_D
 ClientSampled : JC-02-031919-A

Tgt Ion: 168 Resp: 8201

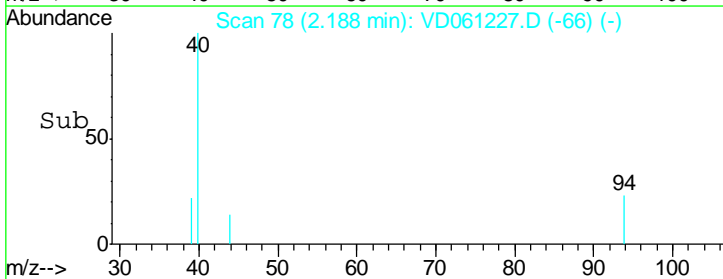
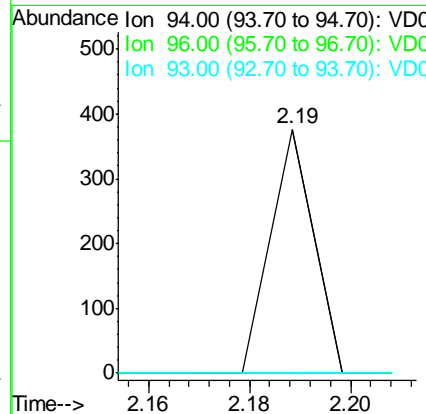
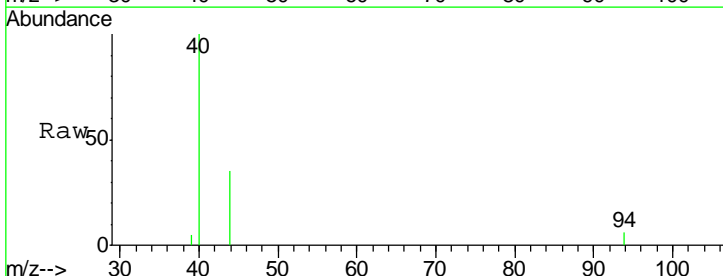
Ion	Ratio	Lower	Upper
168	100		
99	53.3	47.3	70.9

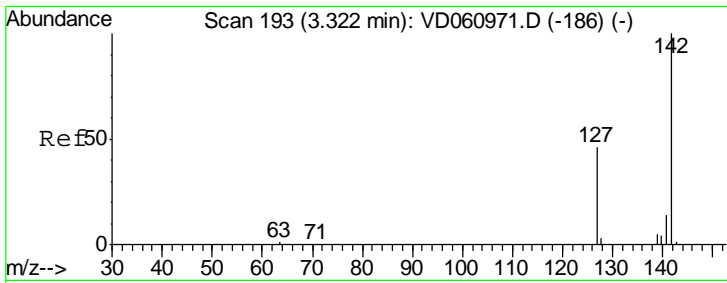


#5
 Bromomethane
 Concen: 17.339 ug/l
 RT: 2.19 min Scan# 78
 Delta R.T. 0.02 min
 Lab File: VD061227.D
 Acq: 21 Mar 2019 1:53

Tgt Ion: 94 Resp: 222

Ion	Ratio	Lower	Upper
94	100		
96	0.0	84.0	126.0#
93	0.0	17.3	25.9#

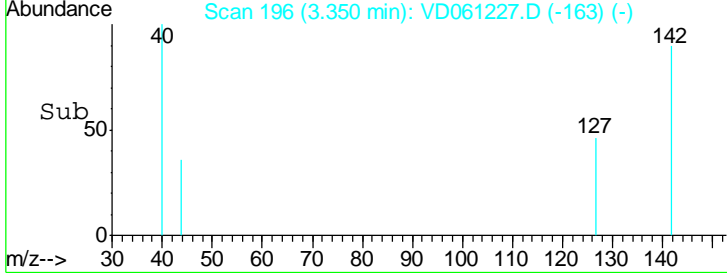
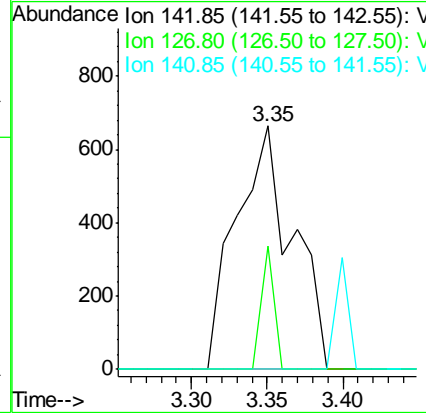
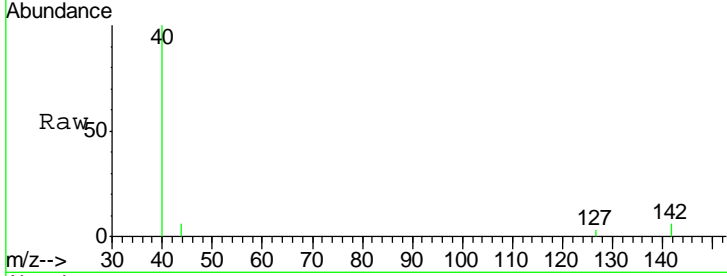




#10
Methyl Iodide
Concen: 14.695 ug/l
RT: 3.35 min Scan# 196
Delta R.T. 0.03 min
Lab File: VD061227.D
Acq: 21 Mar 2019 1:53

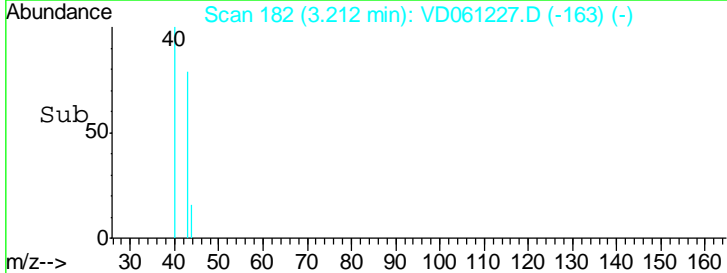
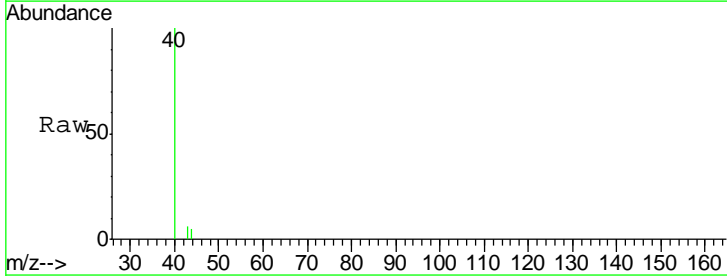
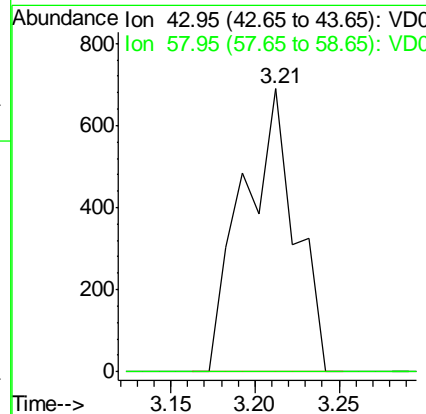
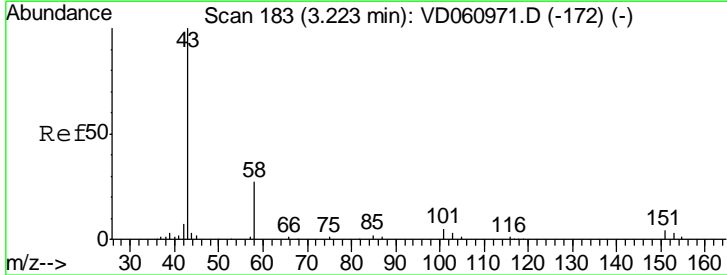
Instrument : MSVOA_D
ClientSampled : JC-02-031919-A

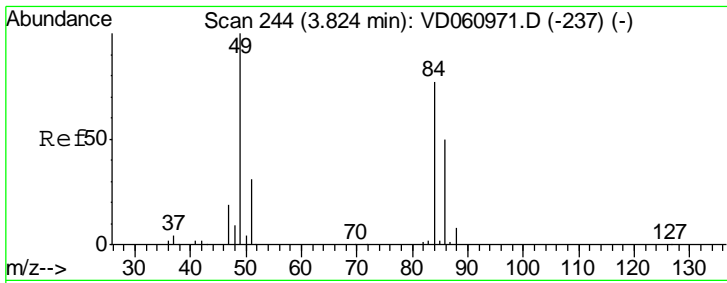
Tgt Ion	Resp	Lower	Upper
142	1728		
127	50.6	36.8	55.2
141	0.0	11.2	16.8#



#16
Acetone
Concen: 75.510 ug/l
RT: 3.21 min Scan# 182
Delta R.T. -0.01 min
Lab File: VD061227.D
Acq: 21 Mar 2019 1:53

Tgt Ion	Resp	Lower	Upper
43	1474		
58	0.0	21.6	32.4#

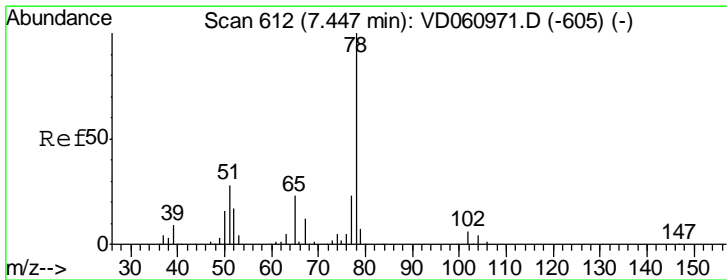
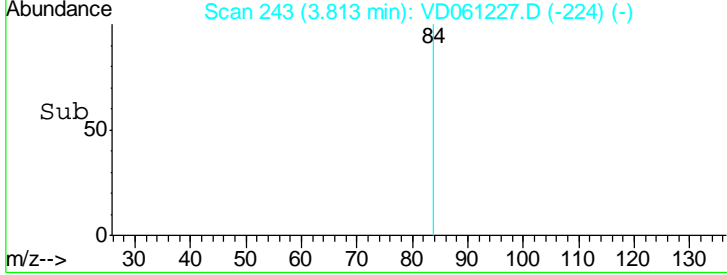
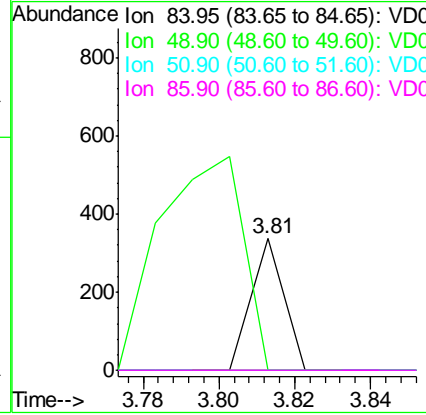
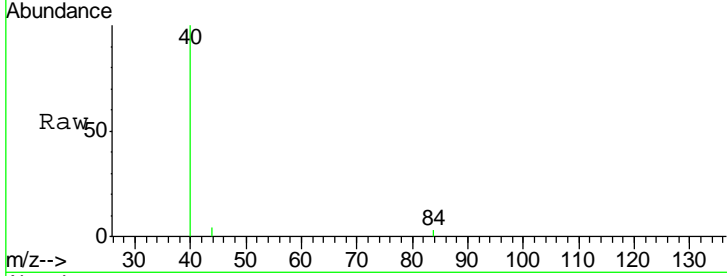




#20
 Methylene Chloride
 Concen: Below Cal
 RT: 3.81 min Scan# 243
 Delta R.T. -0.01 min
 Lab File: VD061227.D
 Acq: 21 Mar 2019 1:53

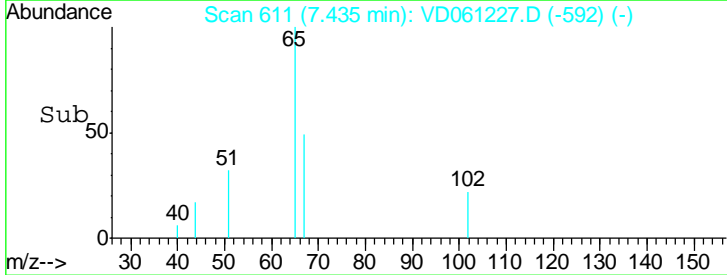
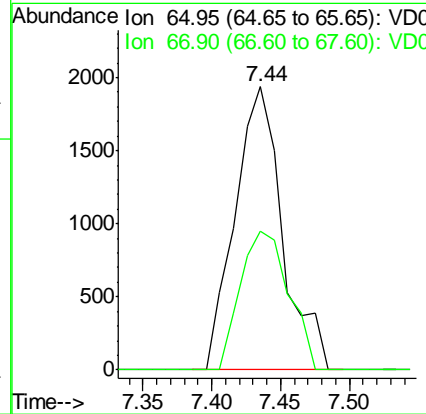
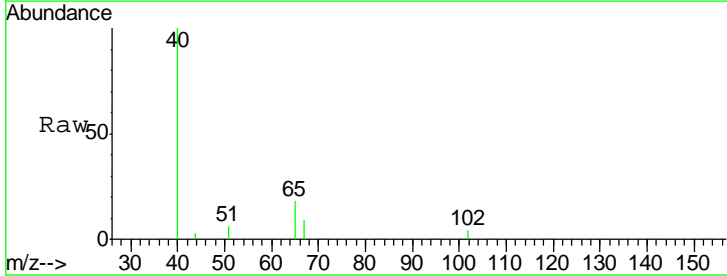
Instrument : MSVOA_D
 ClientSampled : JC-02-031919-A

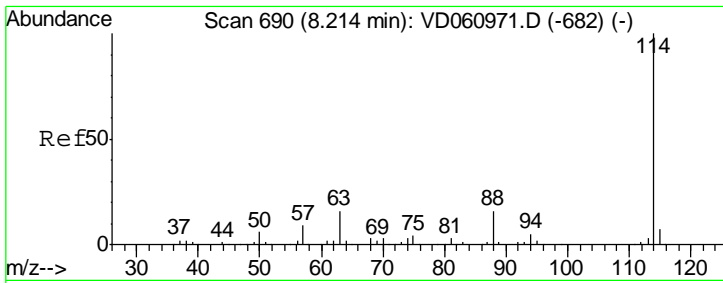
Tgt Ion	Resp	Lower	Upper
84	100		
49	0.0	104.2	156.2#
51	0.0	32.3	48.5#
86	0.0	52.3	78.5#



#33
 1,2-Dichloroethane-d4
 Concen: N.D. ug/l
 RT: 7.44 min Scan# 611
 Delta R.T. -0.01 min
 Lab File: VD061227.D
 Acq: 21 Mar 2019 1:53

Tgt Ion	Resp	Lower	Upper
65	100		
67	48.8	0.0	105.2

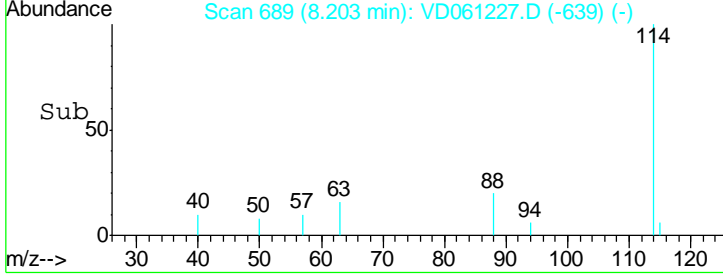
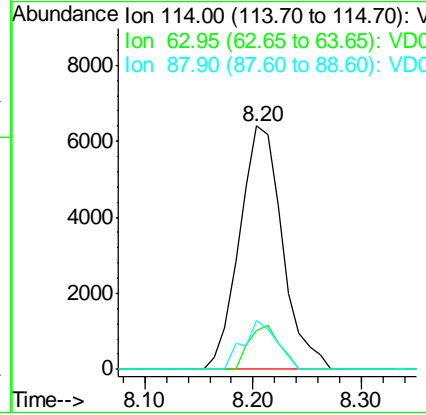
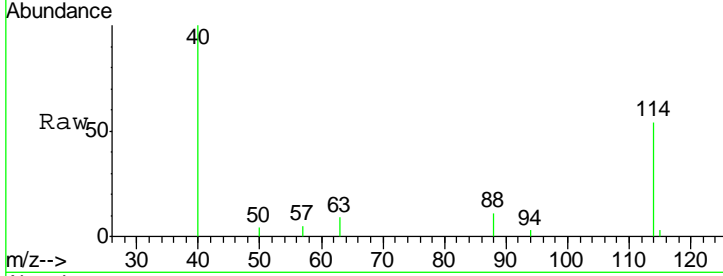




#34
 1,4-Difluorobenzene
 Concen: 50.000 ug/l
 RT: 8.20 min Scan# 689
 Delta R.T. -0.01 min
 Lab File: VD061227.D
 Acq: 21 Mar 2019 1:53

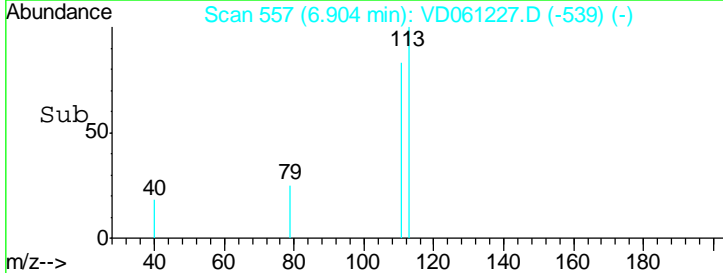
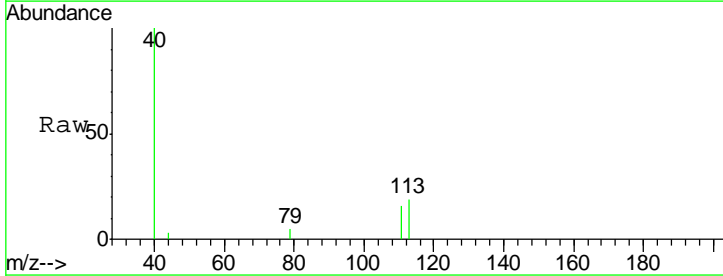
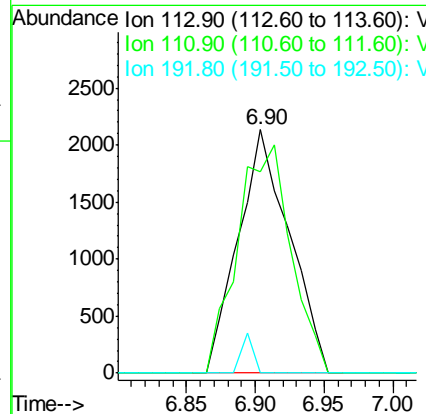
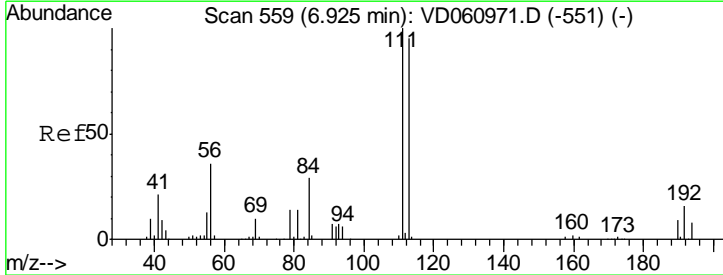
Instrument : MSVOA_D
 ClientSampleId : JC-02-031919-A

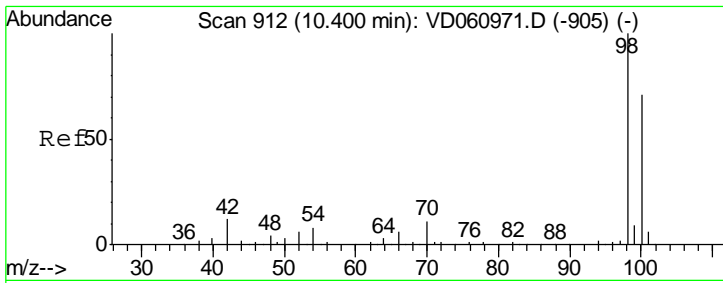
Tgt Ion	Resp	Lower	Upper
114	17638		
63	15.9	0.0	31.4
88	20.3	0.0	33.0



#35
 Dibromofluoromethane
 Concen: 50.000 ug/l
 RT: 6.90 min Scan# 557
 Delta R.T. -0.02 min
 Lab File: VD061227.D
 Acq: 21 Mar 2019 1:53

Tgt Ion	Resp	Lower	Upper
113	5506		
111	82.8	84.2	126.4#
192	0.0	13.1	19.7#

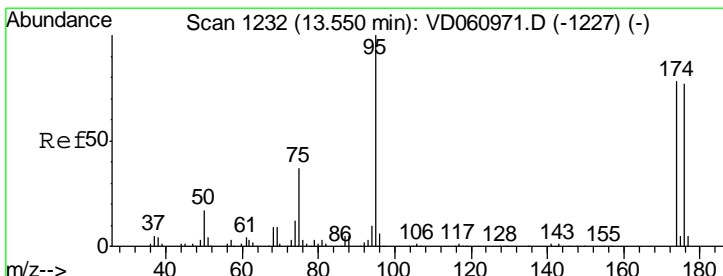
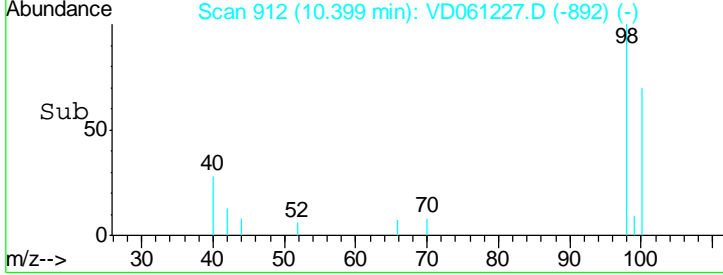
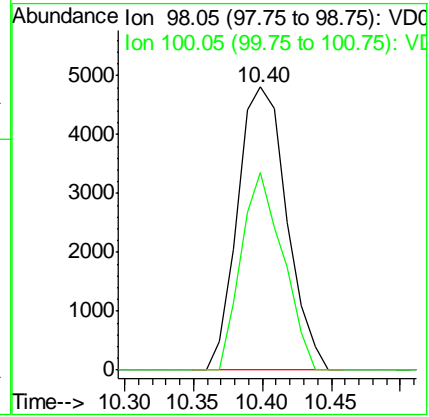
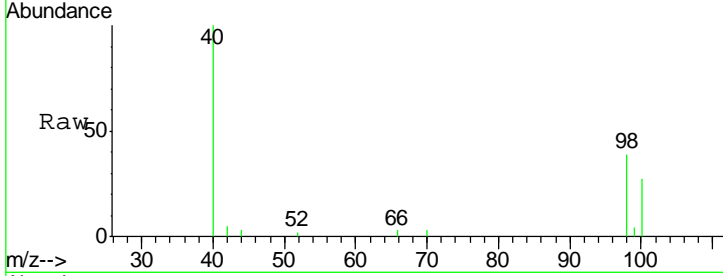




#50
 Toluene-d8
 Concen: N.D. ug/l
 RT: 10.40 min Scan# 912
 Delta R.T. -0.00 min
 Lab File: VD061227.D
 Acq: 21 Mar 2019 1:53

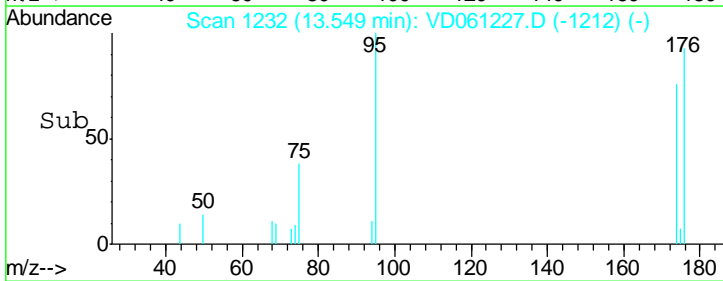
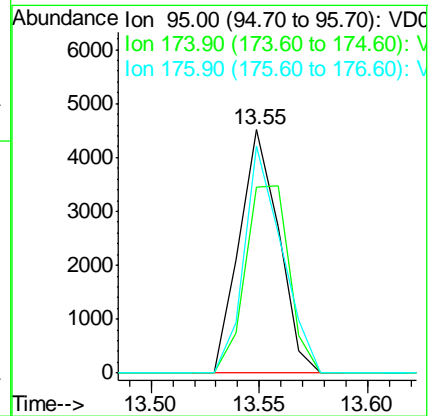
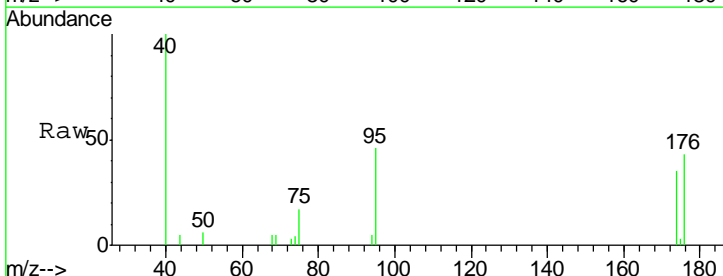
Instrument :
 MSVOA_D
ClientSampled :
 JC-02-031919-A

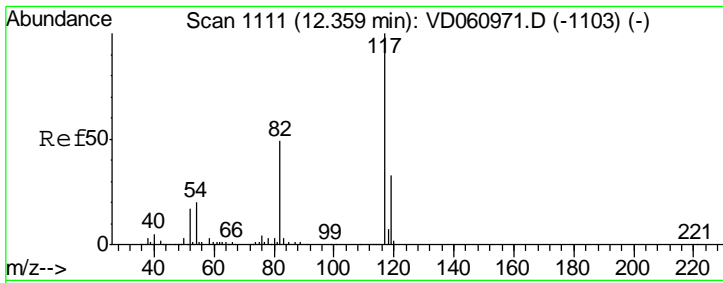
Tgt Ion: 98 Resp: 11925
 Ion Ratio Lower Upper
 98 100
 100 69.9 57.4 86.2



#62
 4-Bromofluorobenzene
 Concen: N.D. ug/l
 RT: 13.55 min Scan# 1232
 Delta R.T. -0.00 min
 Lab File: VD061227.D
 Acq: 21 Mar 2019 1:53

Tgt Ion: 95 Resp: 5764
 Ion Ratio Lower Upper
 95 100
 174 76.4 0.0 155.6
 176 93.4 0.0 153.8

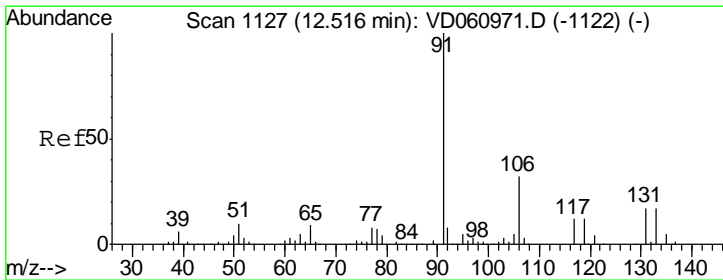
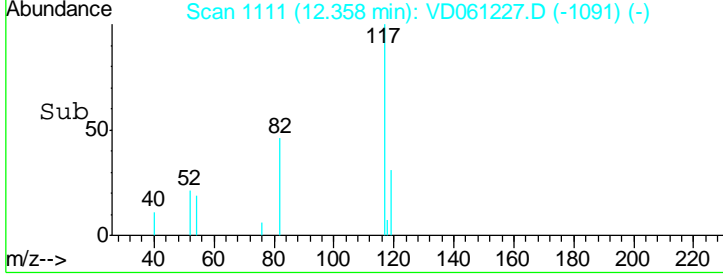
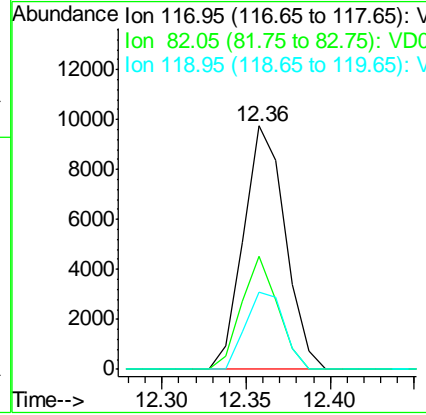
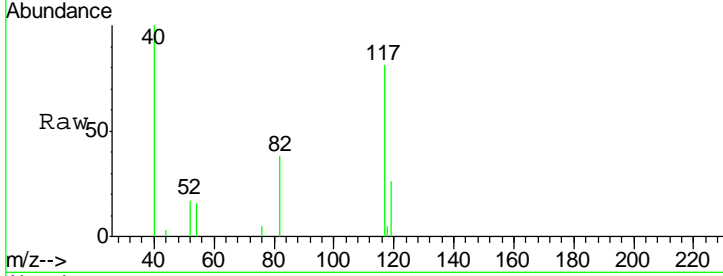




#63
 Chlorobenzene-d5
 Concen: 50.000 ug/l
 RT: 12.36 min Scan# 1111
 Delta R.T. -0.00 min
 Lab File: VD061227.D
 Acq: 21 Mar 2019 1:53

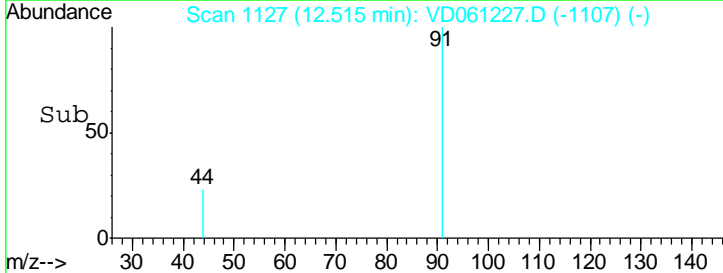
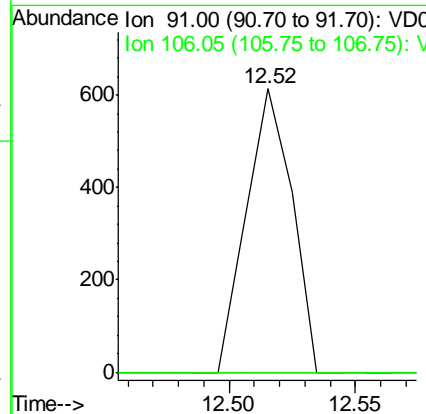
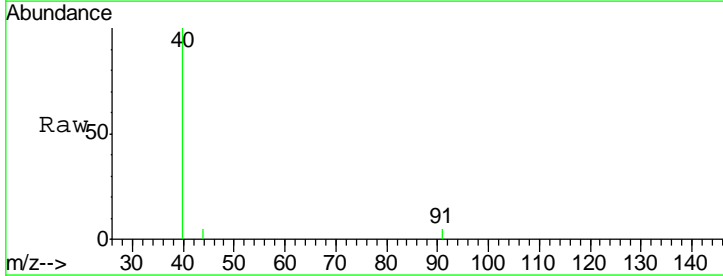
Instrument : MSVOA_D
 ClientSampled : JC-02-031919-A

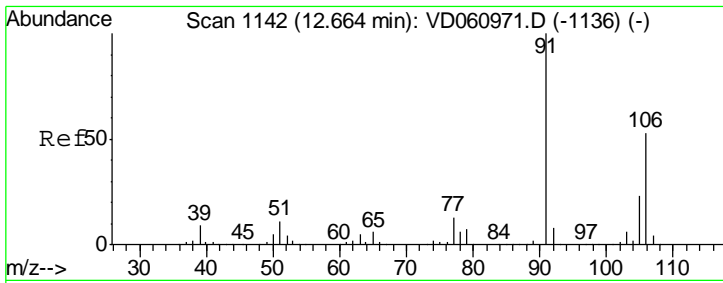
Tgt Ion	Resp	Lower	Upper
117	16743		
82	46.4	38.9	58.3
119	31.5	26.6	39.8



#67
 Ethyl Benzene
 Concen: 1.576 ug/l
 RT: 12.52 min Scan# 1127
 Delta R.T. -0.00 min
 Lab File: VD061227.D
 Acq: 21 Mar 2019 1:53

Tgt Ion	Resp	Lower	Upper
91	770		
106	0.0	25.7	38.5#

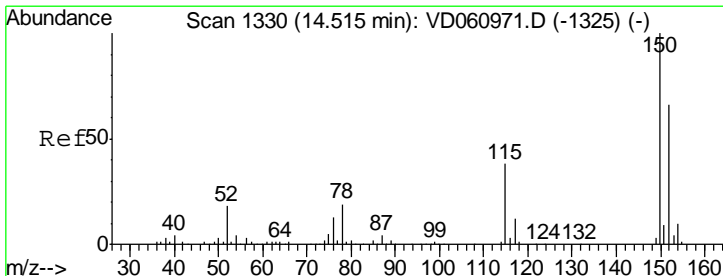
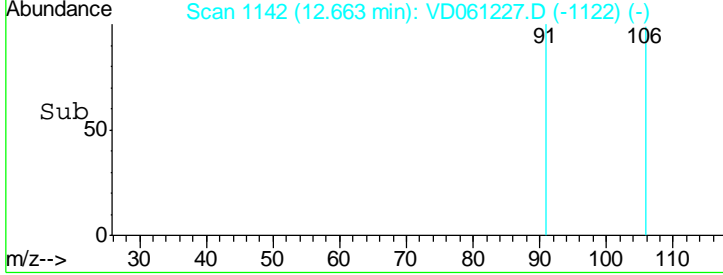
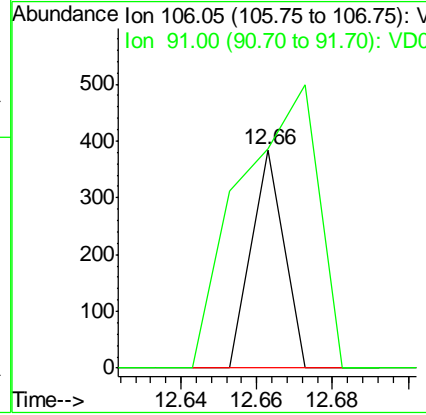
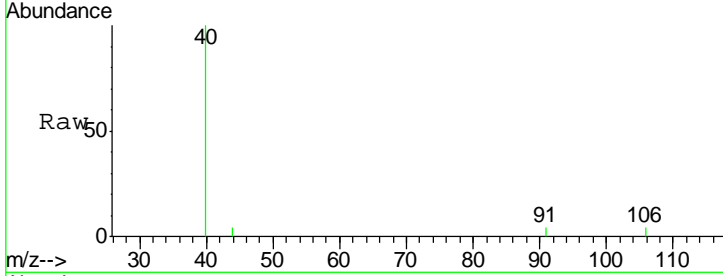




#68
 m/p-Xylenes
 Concen: 1.184 ug/l
 RT: 12.66 min Scan# 1142
 Delta R.T. -0.00 min
 Lab File: VD061227.D
 Acq: 21 Mar 2019 1:53

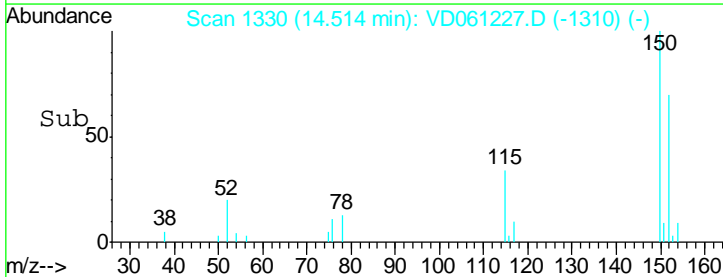
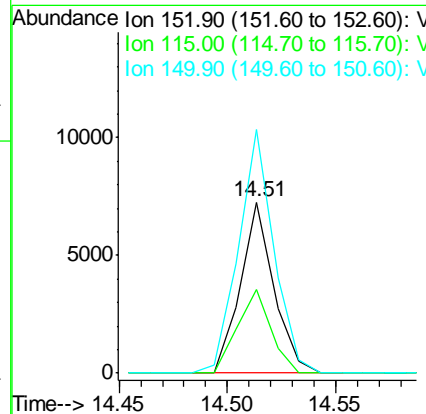
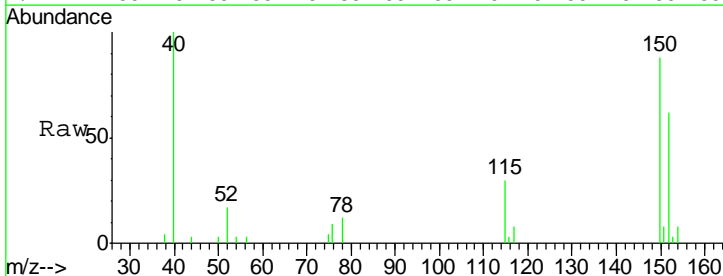
Instrument : MSVOA_D
 ClientSampleId : JC-02-031919-A

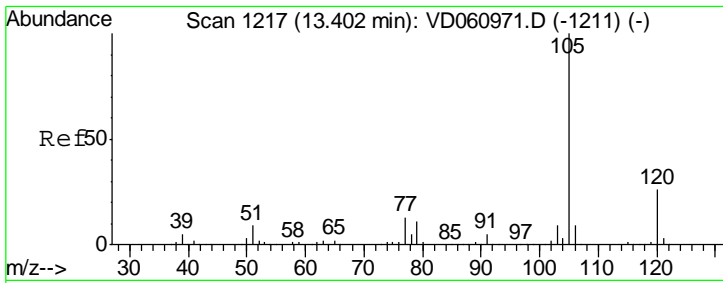
Tgt Ion	Resp	Lower	Upper
106	100		
91	100.8	152.0	228.0



#72
 1,4-Dichlorobenzene-d4
 Concen: 50.000 ug/l
 RT: 14.51 min Scan# 1330
 Delta R.T. -0.00 min
 Lab File: VD061227.D
 Acq: 21 Mar 2019 1:53

Tgt Ion	Resp	Lower	Upper
152	100		
115	48.7	28.6	85.9
150	142.1	0.0	310.6

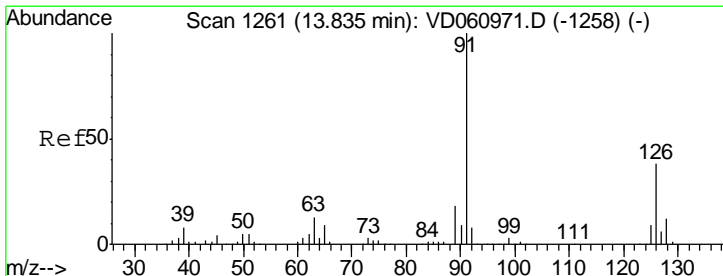
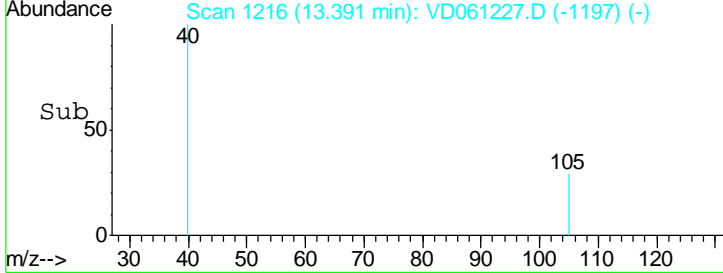
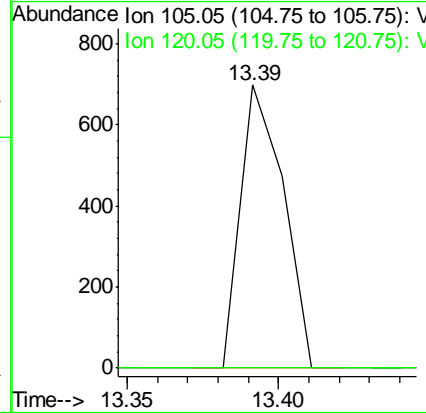
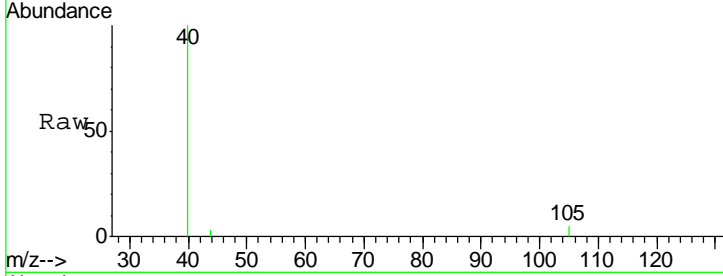




#73
 Isopropylbenzene
 Concen: 1.222 ug/l
 RT: 13.39 min Scan# 1216
 Delta R.T. -0.01 min
 Lab File: VD061227.D
 Acq: 21 Mar 2019 1:53

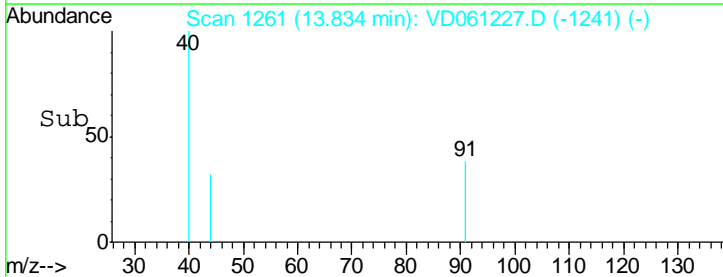
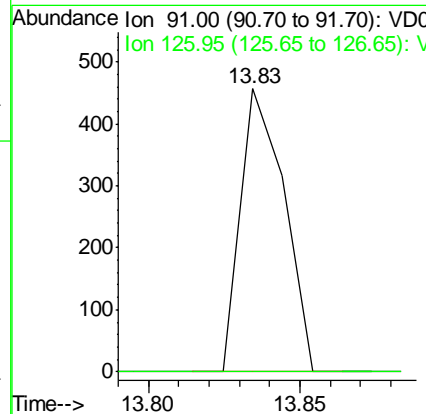
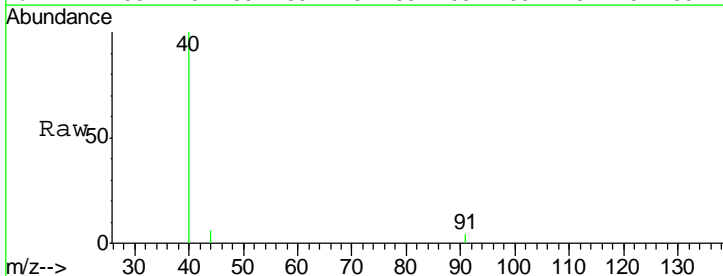
Instrument : MSVOA_D
 ClientSampleID : JC-02-031919-A

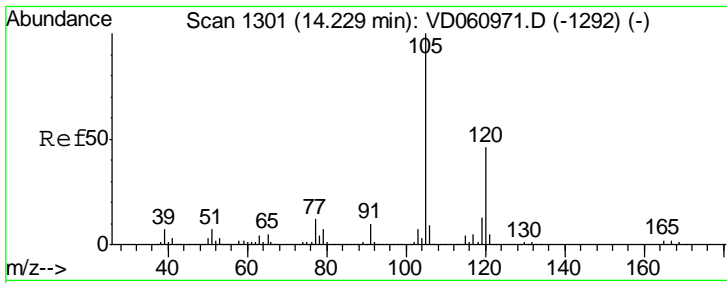
Tgt Ion: 105 Resp: 693
 Ion Ratio Lower Upper
 105 100
 120 0.0 12.8 38.4#



#79
 2-Chlorotoluene
 Concen: 1.250 ug/l
 RT: 13.83 min Scan# 1261
 Delta R.T. -0.00 min
 Lab File: VD061227.D
 Acq: 21 Mar 2019 1:53

Tgt Ion: 91 Resp: 457
 Ion Ratio Lower Upper
 91 100
 126 0.0 18.6 55.6#

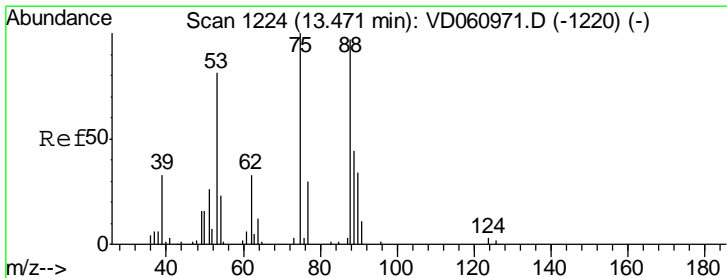
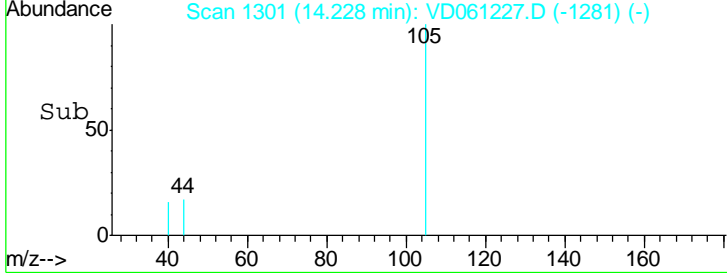
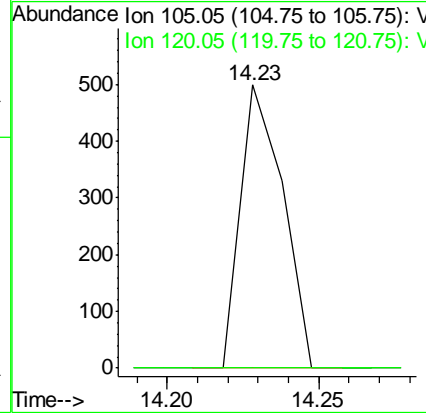
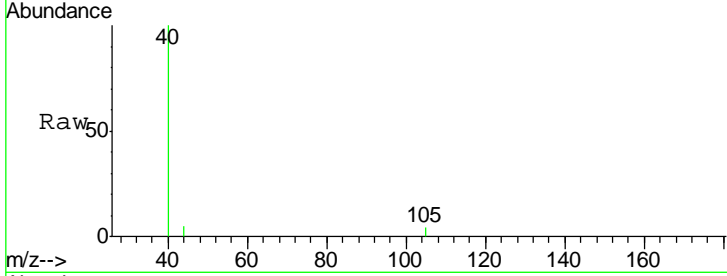




#80
 1,3,5-Trimethylbenzene
 Concen: 1.138 ug/l
 RT: 14.23 min Scan# 1301
 Delta R.T. -0.00 min
 Lab File: VD061227.D
 Acq: 21 Mar 2019 1:53

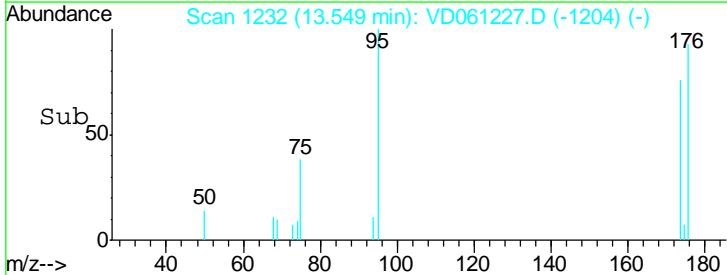
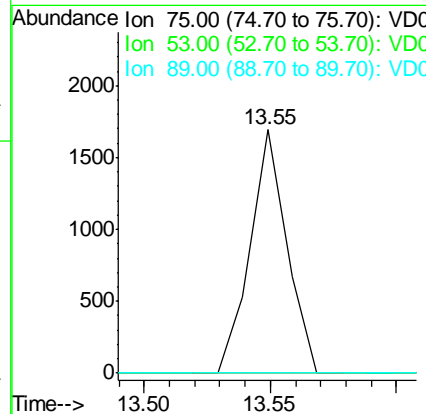
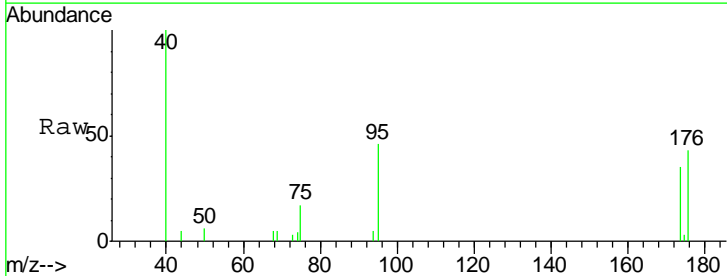
Instrument :
 MSVOA_D
 ClientSampled :
 JC-02-031919-A

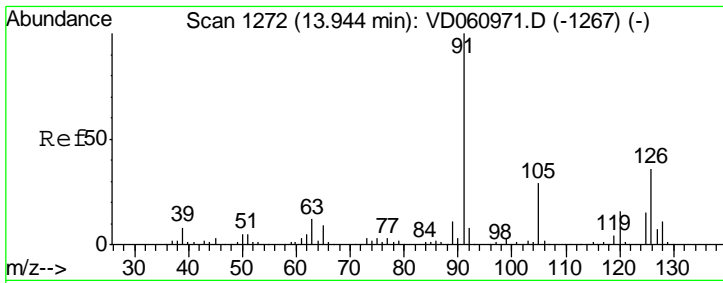
Tgt Ion: 105 Resp: 490
 Ion Ratio Lower Upper
 105 100
 120 0.0 22.9 68.5#



#81
 trans-1,4-Dichloro-2-butene
 Concen: 51.174 ug/l
 RT: 13.55 min Scan# 1232
 Delta R.T. 0.08 min
 Lab File: VD061227.D
 Acq: 21 Mar 2019 1:53

Tgt Ion: 75 Resp: 1708
 Ion Ratio Lower Upper
 75 100
 53 0.0 64.4 96.6#
 89 0.0 34.8 52.2#

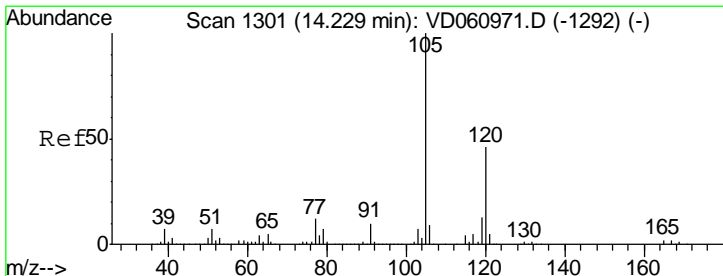
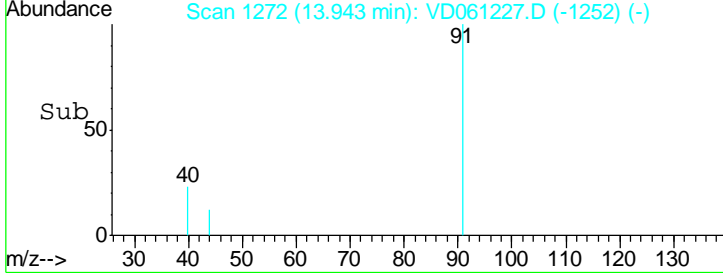
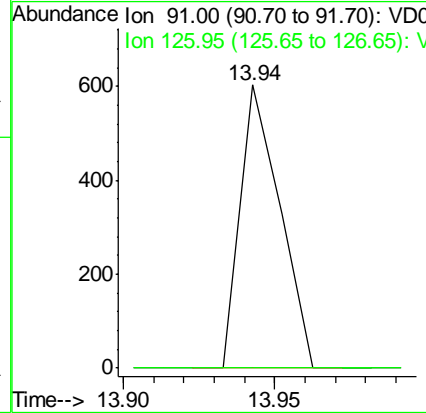
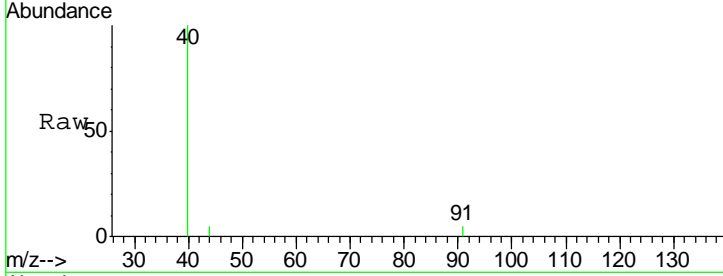




#82
 4-Chlorotoluene
 Concen: 1.273 ug/l
 RT: 13.94 min Scan# 1272
 Delta R.T. -0.00 min
 Lab File: VD061227.D
 Acq: 21 Mar 2019 1:53

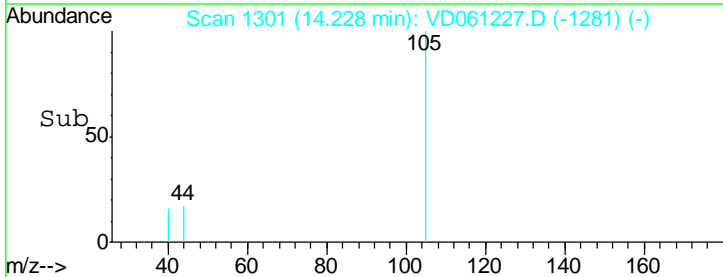
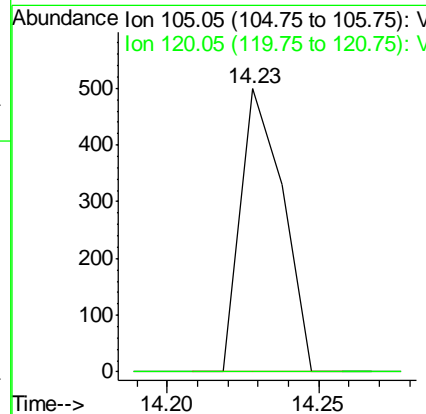
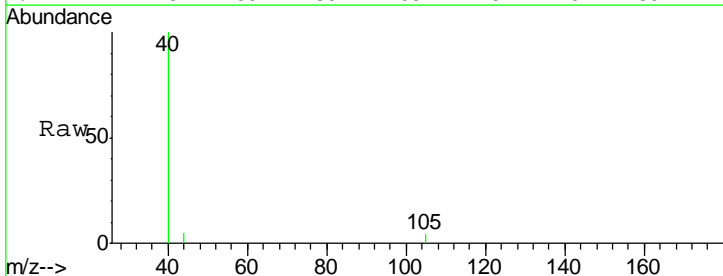
Instrument : MSVOA_D
 ClientSampled : JC-02-031919-A

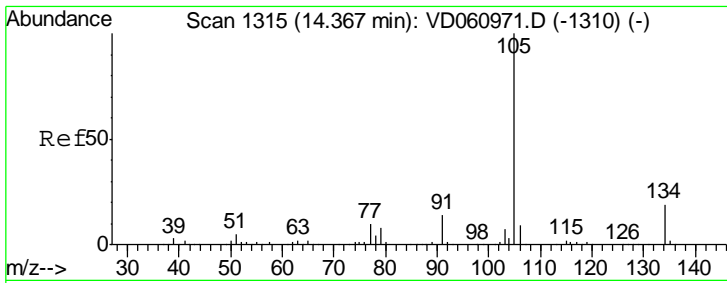
Tgt Ion: 91 Resp: 550
 Ion Ratio Lower Upper
 91 100
 126 0.0 18.0 54.0#



#84
 1,2,4-Trimethylbenzene
 Concen: 1.138 ug/l
 RT: 14.23 min Scan# 1301
 Delta R.T. -0.00 min
 Lab File: VD061227.D
 Acq: 21 Mar 2019 1:53

Tgt Ion: 105 Resp: 490
 Ion Ratio Lower Upper
 105 100
 120 0.0 22.9 68.5#

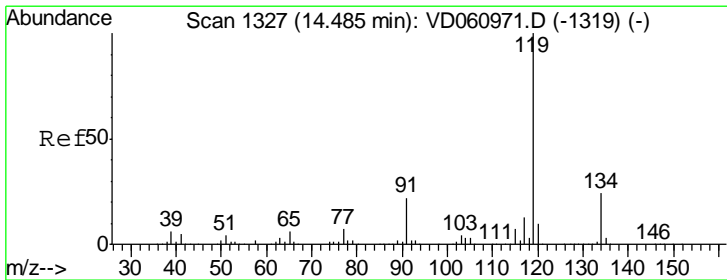
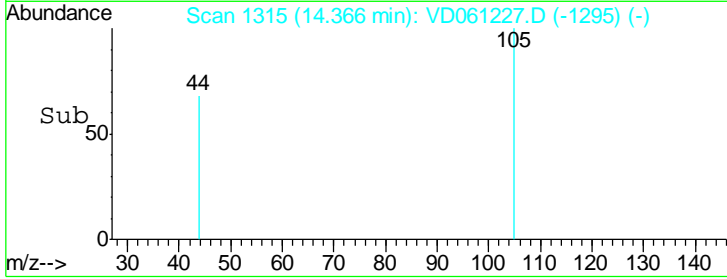
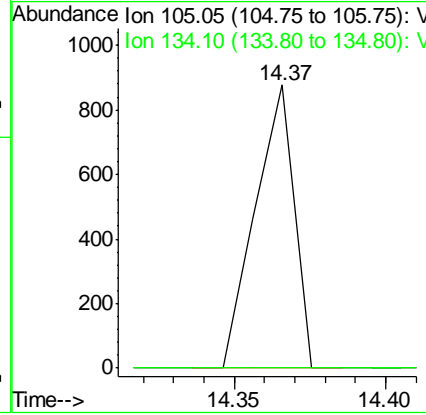
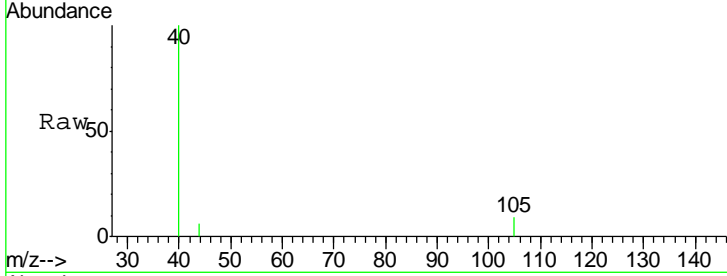




#85
 sec-Butylbenzene
 Concen: 1.375 ug/l
 RT: 14.37 min Scan# 1315
 Delta R.T. -0.00 min
 Lab File: VD061227.D
 Acq: 21 Mar 2019 1:53

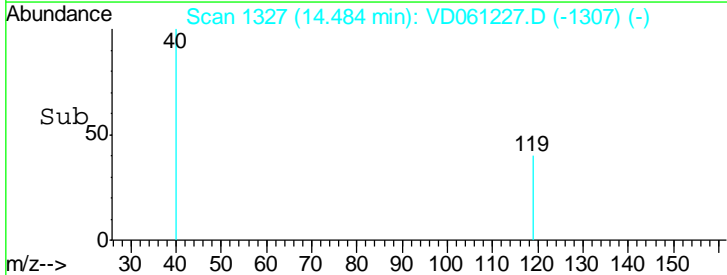
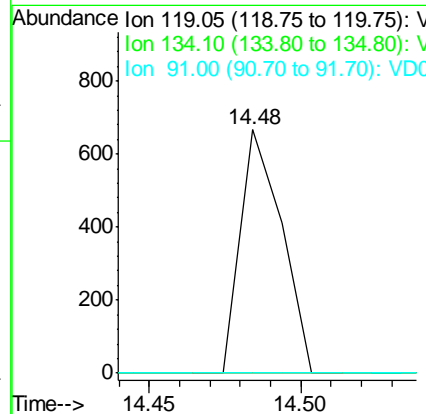
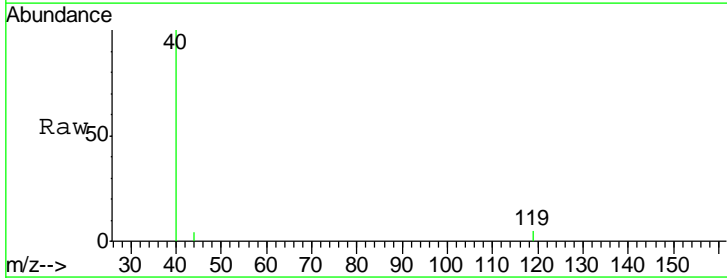
Instrument :
 MSVOA_D
 ClientSampleId :
 JC-02-031919-A

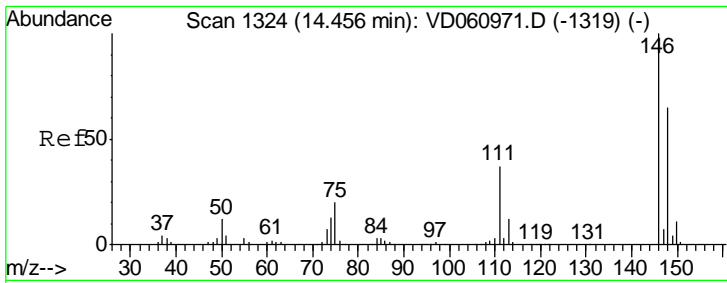
Tgt Ion: 105 Resp: 791
 Ion Ratio Lower Upper
 105 100
 134 0.0 9.4 28.2#



#86
 p-Isopropyltoluene
 Concen: 1.353 ug/l
 RT: 14.48 min Scan# 1327
 Delta R.T. -0.00 min
 Lab File: VD061227.D
 Acq: 21 Mar 2019 1:53

Tgt Ion: 119 Resp: 636
 Ion Ratio Lower Upper
 119 100
 134 0.0 12.0 36.1#
 91 0.0 11.2 33.6#

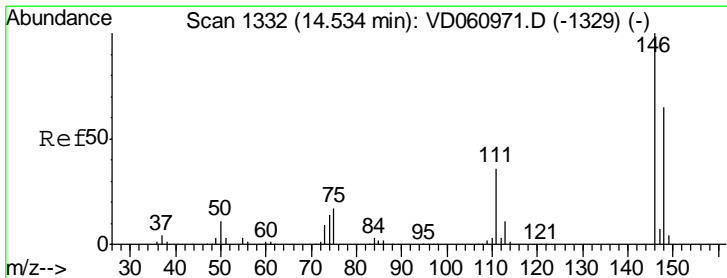
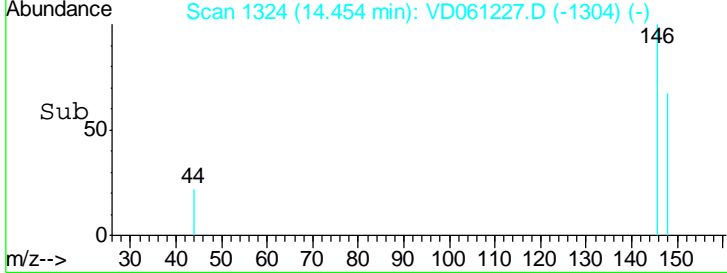
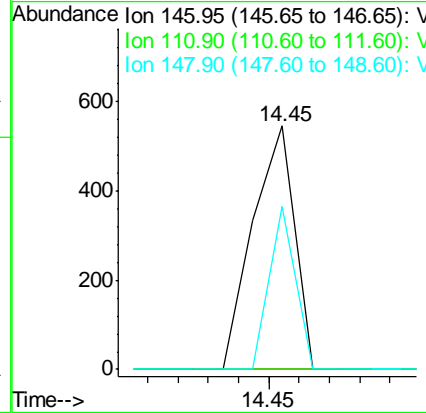
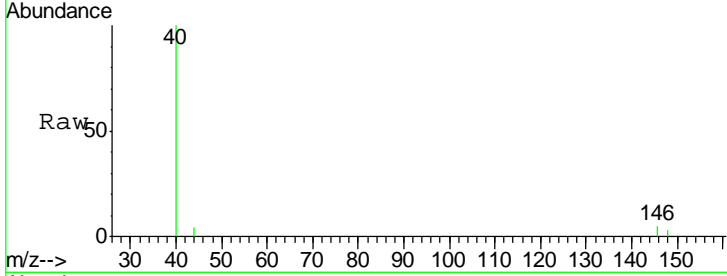




#87
 1,3-Dichlorobenzene
 Concen: 2.012 ug/l
 RT: 14.45 min Scan# 1324
 Delta R.T. -0.00 min
 Lab File: VD061227.D
 Acq: 21 Mar 2019 1:53

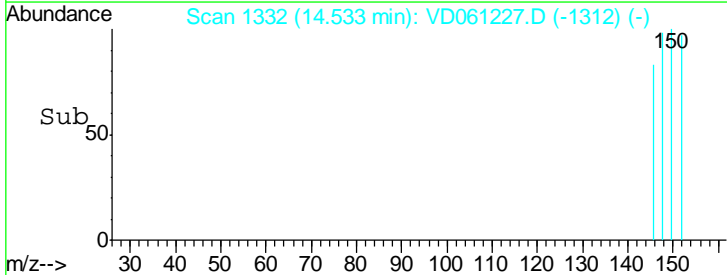
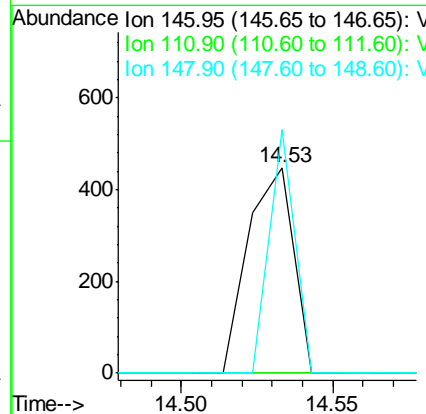
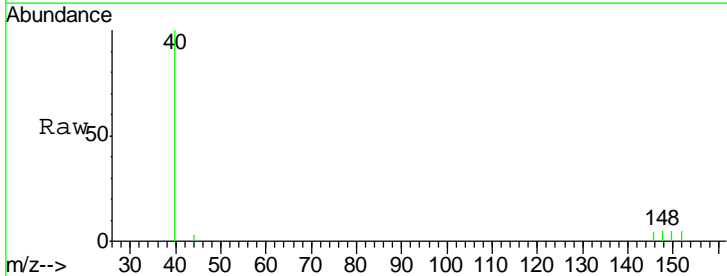
Instrument : MSVOA_D
 ClientSampled : JC-02-031919-A

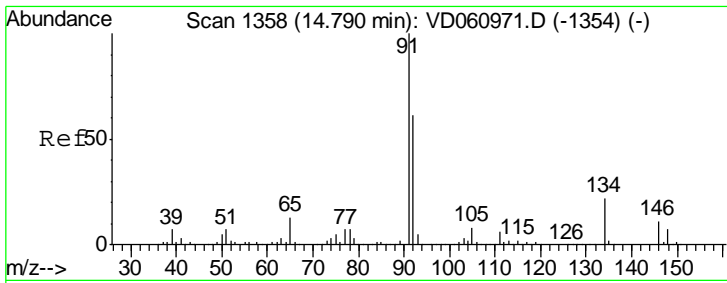
Tgt Ion	Resp	Lower	Upper
146	100		
111	0.0	18.4	55.4#
148	66.8	32.5	97.4



#88
 1,4-Dichlorobenzene
 Concen: 1.858 ug/l
 RT: 14.53 min Scan# 1332
 Delta R.T. -0.00 min
 Lab File: VD061227.D
 Acq: 21 Mar 2019 1:53

Tgt Ion	Resp	Lower	Upper
146	100		
111	0.0	18.4	55.2#
148	118.5	32.5	97.5#

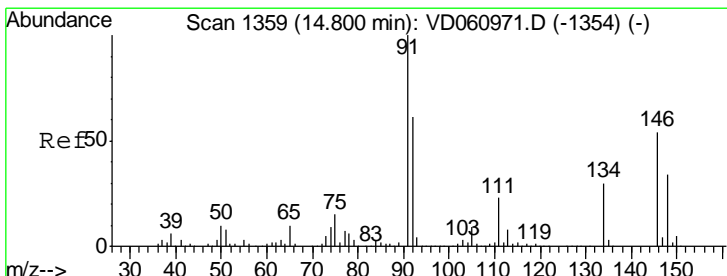
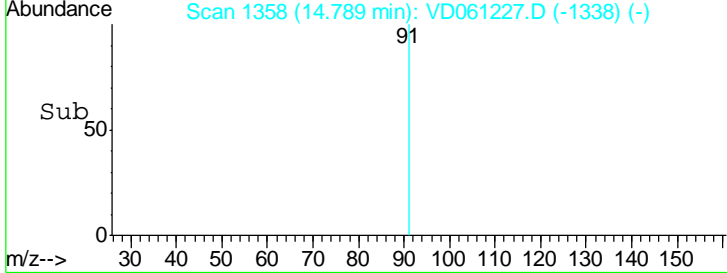
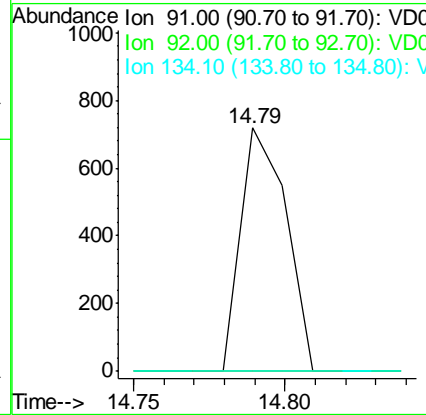
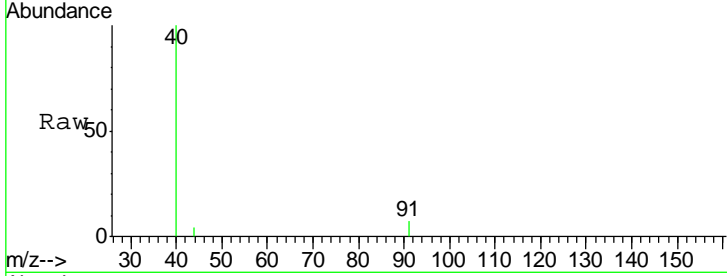




#89
 n-Butylbenzene
 Concen: 1.661 ug/l
 RT: 14.79 min Scan# 1358
 Delta R.T. -0.00 min
 Lab File: VD061227.D
 Acq: 21 Mar 2019 1:53

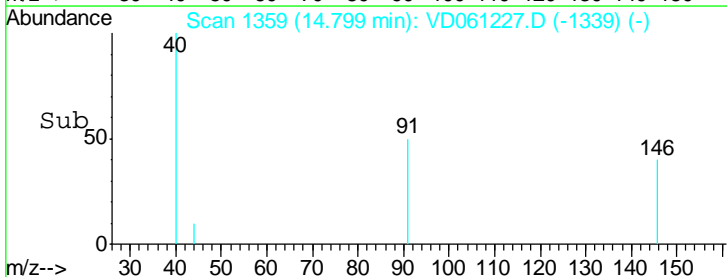
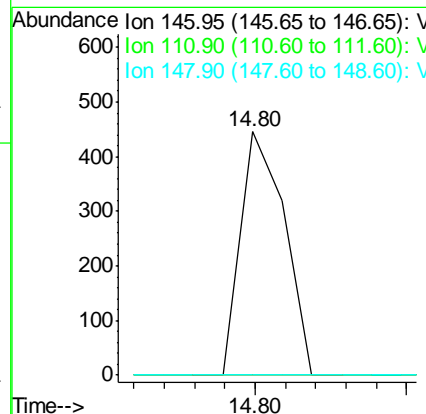
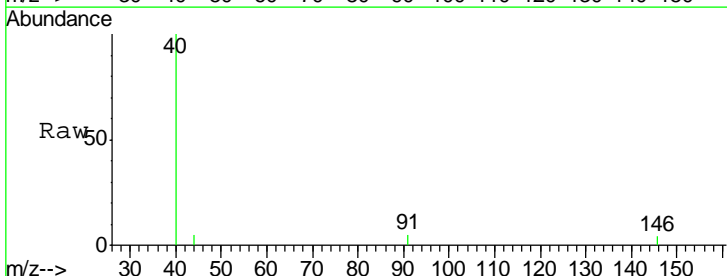
Instrument : MSVOA_D
 ClientSampleId : JC-02-031919-A

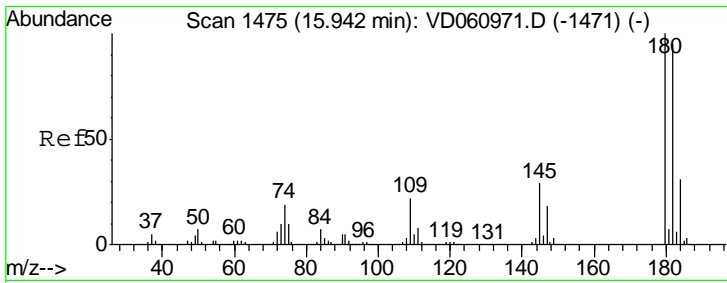
Tgt Ion	Resp	Lower	Upper
91	100		
92	0.0	30.6	91.8#
134	0.0	11.0	33.0#



#91
 1,2-Dichlorobenzene
 Concen: 2.097 ug/l
 RT: 14.80 min Scan# 1359
 Delta R.T. -0.00 min
 Lab File: VD061227.D
 Acq: 21 Mar 2019 1:53

Tgt Ion	Resp	Lower	Upper
146	100		
111	0.0	21.5	64.5#
148	0.0	30.9	92.8#

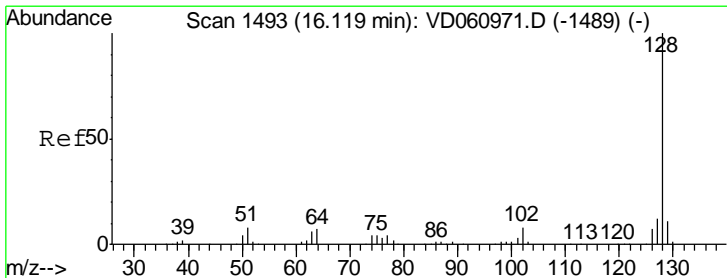
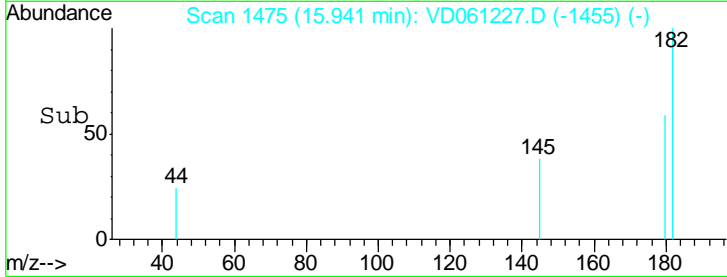
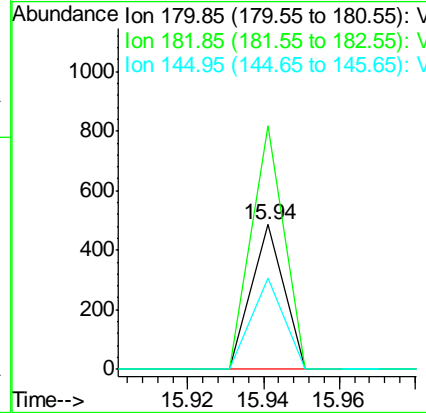
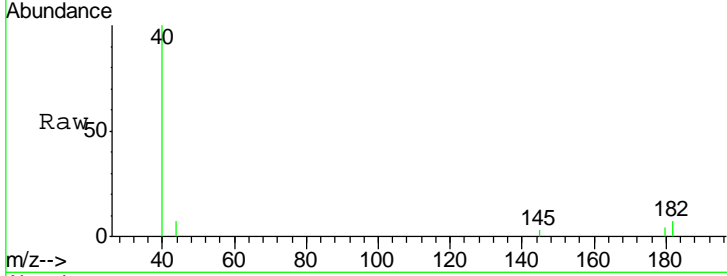




#93
 1,2,4-Trichlorobenzene
 Concen: 2.871 ug/l
 RT: 15.94 min Scan# 1475
 Delta R.T. -0.00 min
 Lab File: VD061227.D
 Acq: 21 Mar 2019 1:53

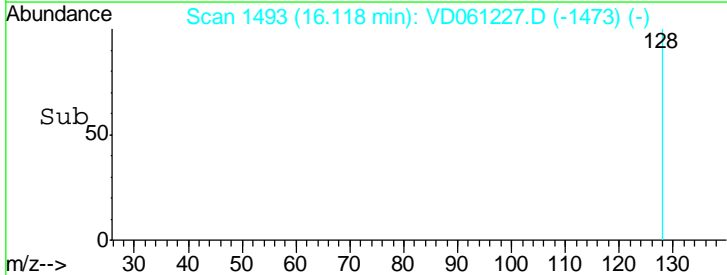
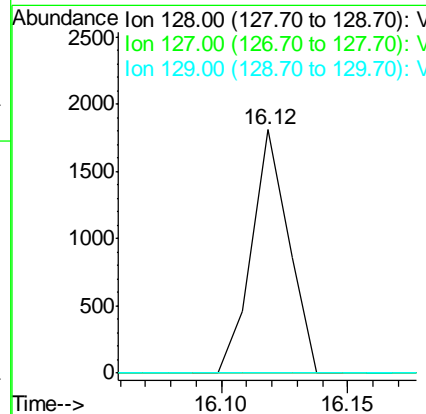
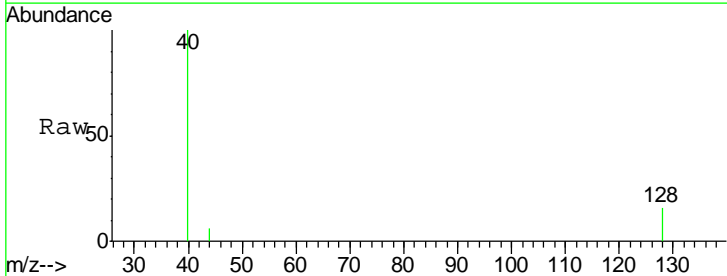
Instrument :
 MSVOA_D
 ClientSampled :
 JC-02-031919-A

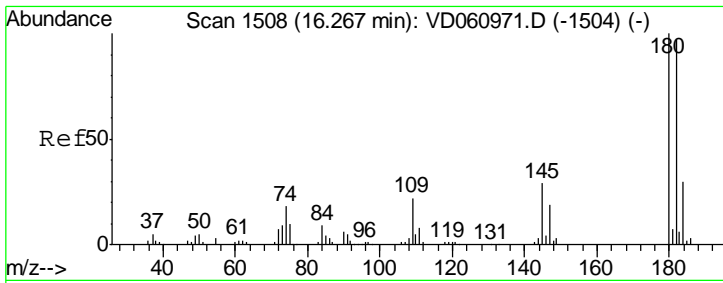
Tgt Ion	Resp	Lower	Upper
180	100		
182	168.7	47.3	142.0#
145	63.5	14.4	43.0#



#95
 Naphthalene
 Concen: 12.138 ug/l
 RT: 16.12 min Scan# 1493
 Delta R.T. -0.00 min
 Lab File: VD061227.D
 Acq: 21 Mar 2019 1:53

Tgt Ion	Resp	Lower	Upper
128	100		
127	0.0	9.8	14.8#
129	0.0	8.5	12.7#





#96
 1,2,3-Trichlorobenzene
 Concen: 4.840 ug/l
 RT: 16.27 min Scan# 1508
 Delta R.T. -0.00 min
 Lab File: VD061227.D
 Acq: 21 Mar 2019 1:53

Instrument : MSVOA_D
 ClientSampled : JC-02-031919-A

Tot Ion	Ion	Resp	Lower	Upper
180	100	239		
182	0.0		48.6	145.8#
145	0.0		14.3	42.9#

