

Data Path : Z:\VOASRV\HPCHEM1\MSVOA D\DATA\VD032019\  
 Data File : VD061217.D  
 Acq On : 20 Mar 2019 19:26  
 Operator : VA/AP  
 Sample : K2004-03  
 Misc : 5.02g/5ml/MSVOA D/SOIL  
 ALS Vial : 20 Sample Multiplier: 1

Instrument :  
 MSVOA\_D  
 ClientSampleID :  
 SB-19(7.5-8.5)

Integration Parameters: RTEINT.P

Integrator: RTE  
 Smoothing : ON  
 Sampling : 1  
 Start Thrs: 0.2  
 Stop Thrs : 0

Filtering: 5  
 Min Area: 3 % of largest Peak  
 Max Peaks: 100  
 Peak Location: TOP

If leading or trailing edge < 100 prefer < Baseline drop else tangent >  
 Peak separation: 5

Method : Z:\VOASRV\HPCHEM1\MSVOA\_D\METHOD\82D030719S.M  
 Title : SW846 8260

Signal : TIC

peak #	R.T. min	first scan	max scan	last scan	PK TY	peak height	corr. area	corr. % max.	% of total
1	5.522	404	416	426	rBV	101278	406230	1.58%	0.076%
2	5.700	426	434	452	rVB2	230912	991340	3.85%	0.185%
3	6.654	521	531	548	rBV	202562	800263	3.11%	0.149%
4	6.920	553	558	566	rVV2	90661	321597	1.25%	0.060%
5	7.097	566	576	588	rVV2	854511	3246454	12.62%	0.606%
6	7.304	589	597	607	rVV2	351478	1257958	4.89%	0.235%
7	7.619	622	629	635	rBV	520747	1630220	6.33%	0.304%
8	7.698	635	637	643	rVB4	100626	260153	1.01%	0.049%
9	8.210	684	689	698	rBV	163975	409580	1.59%	0.076%
10	8.663	728	735	744	rBV	550743	1728507	6.72%	0.323%
11	8.830	744	752	758	rBV	2263043	7155826	27.81%	1.336%
12	8.938	758	763	767	rVV	2623464	7141221	27.75%	1.333%
13	9.017	767	771	777	rVB	1778997	4770324	18.54%	0.890%
14	9.096	777	779	789	rVB	207127	502254	1.95%	0.094%
15	9.303	791	800	814	rBV2	3044895	11850032	46.05%	2.212%
16	9.539	818	824	832	rVB2	214231	695704	2.70%	0.130%
17	9.736	833	844	845	rBV4	235648	695870	2.70%	0.130%
18	9.785	845	849	865	rVB	2194004	6882824	26.75%	1.285%
19	10.011	865	872	874	rBV	985108	2867351	11.14%	0.535%
20	10.061	874	877	882	rVB	1089914	2602251	10.11%	0.486%
21	10.159	882	887	892	rBV	2712686	7112991	27.64%	1.328%
22	10.257	892	897	903	rVB3	861728	2954811	11.48%	0.551%
23	10.376	903	909	913	rBV4	1151337	4277409	16.62%	0.798%
24	10.454	913	917	927	rVB	2212220	5878402	22.84%	1.097%
25	10.641	927	936	947	rBV	3707268	14014055	54.46%	2.615%
26	10.828	951	955	959	rVB	335637	778644	3.03%	0.145%
27	10.927	959	965	974	rVB2	4618378	14739395	57.28%	2.751%
28	11.104	974	983	988	rBV	3174193	9291035	36.10%	1.734%
29	11.193	988	992	995	rBV	1359966	3133499	12.18%	0.585%
30	11.262	995	999	1003	rVB	1823167	4097323	15.92%	0.765%
31	11.340	1003	1007	1013	rVB	3592927	9473058	36.81%	1.768%
32	11.439	1013	1017	1019	rBV	666665	1485138	5.77%	0.277%
33	11.488	1019	1022	1026	rVB	1008287	1828211	7.10%	0.341%
34	11.547	1026	1028	1031	rVB	447583	765409	2.97%	0.143%

Data Path : Z:\VOASRV\HPCHEM1\MSVOA D\DATA\VD032019\  
 Data File : VD061217.D  
 Acq On : 20 Mar 2019 19:26  
 Operator : VA/AP  
 Sample : K2004-03  
 Misc : 5.02g/5ml/MSVOA D/SOIL  
 ALS Vial : 20 Sample Multiplier: 1

Instrument :  
 MSVOA\_D  
 ClientSampleID :  
 SB-19(7.5-8.5)

Integration Parameters: RTEINT.P

Integrator: RTE  
 Smoothing : ON  
 Sampling : 1  
 Start Thrs: 0.2  
 Stop Thrs : 0

Filtering: 5  
 Min Area: 3 % of largest Peak  
 Max Peaks: 100  
 Peak Location: TOP

If leading or trailing edge < 100 prefer < Baseline drop else tangent >  
 Peak separation: 5

Method : Z:\VOASRV\HPCHEM1\MSVOA\_D\METHOD\82D030719S.M  
 Title : SW846 8260

35	11.655	1031	1039	1045	rBV2	5777593	25734061	100.00%	4.803%
36	11.724	1045	1046	1052	rVB	2101860	3704566	14.40%	0.691%
37	11.842	1052	1058	1062	rBV	5813681	16576024	64.41%	3.094%
38	11.901	1062	1064	1070	rVB2	3812016	8022247	31.17%	1.497%
39	12.000	1070	1074	1077	rBV3	496604	1022250	3.97%	0.191%
40	12.069	1077	1081	1083	rBV	3389892	7234130	28.11%	1.350%
41	12.128	1083	1087	1096	rVB2	6914218	21808870	84.75%	4.070%
42	12.295	1100	1104	1108	rBV	3284397	6624574	25.74%	1.236%
43	12.354	1108	1110	1114	rVB3	748289	1429296	5.55%	0.267%
44	12.453	1118	1120	1125	rVB2	1299017	2742929	10.66%	0.512%
45	12.541	1125	1129	1134	rBV	3622444	8399933	32.64%	1.568%
46	12.650	1134	1140	1142	rBV5	3238418	10801659	41.97%	2.016%
47	12.709	1142	1146	1149	rVV2	5748500	13373074	51.97%	2.496%
48	12.758	1149	1151	1157	rVB	6131661	11225508	43.62%	2.095%
49	12.856	1157	1161	1165	rBV2	2807593	5518847	21.45%	1.030%
50	12.935	1165	1169	1172	rBV2	2731257	5695485	22.13%	1.063%
51	13.014	1172	1177	1180	rBV3	6765335	20221054	78.58%	3.774%
52	13.102	1183	1186	1190	rVV	5185208	11662488	45.32%	2.177%
53	13.162	1190	1192	1193	rVV	2605609	3501375	13.61%	0.653%
54	13.191	1193	1195	1197	rVV2	3000160	5935690	23.07%	1.108%
55	13.230	1197	1199	1202	rVB2	3456194	5148615	20.01%	0.961%
56	13.319	1202	1208	1214	rBV5	5380530	23774614	92.39%	4.437%
57	13.408	1214	1217	1220	rVB2	3793989	7304400	28.38%	1.363%
58	13.496	1220	1226	1230	rBV3	6811702	21227991	82.49%	3.962%
59	13.565	1230	1233	1236	rVB2	1154258	2179168	8.47%	0.407%
60	13.624	1236	1239	1242	rBV2	2745861	6520519	25.34%	1.217%
61	13.713	1242	1248	1255	rVB4	4825297	15413731	59.90%	2.877%
62	13.831	1255	1260	1263	rBV4	3503731	8473187	32.93%	1.581%
63	13.890	1263	1266	1268	rVV2	2663417	5133555	19.95%	0.958%
64	13.929	1268	1270	1272	rVV2	3909492	6915927	26.87%	1.291%
65	13.979	1272	1275	1277	rVB2	3613658	6389290	24.83%	1.192%
66	14.028	1277	1280	1282	rBV3	1959854	3169610	12.32%	0.592%
67	14.067	1282	1284	1286	rVV	1721851	1997805	7.76%	0.373%
68	14.116	1286	1289	1292	rVV3	3380693	9123970	35.45%	1.703%
69	14.166	1292	1294	1296	rVV	2968118	5439658	21.14%	1.015%
70	14.205	1296	1298	1301	rVV2	5036315	8433963	32.77%	1.574%
71	14.264	1301	1304	1308	rVB3	3760098	7230141	28.10%	1.349%

Data Path : Z:\VOASRV\HPCHEM1\MSVOA D\DATA\VD032019\  
 Data File : VD061217.D  
 Acq On : 20 Mar 2019 19:26  
 Operator : VA/AP  
 Sample : K2004-03  
 Misc : 5.02g/5ml/MSVOA D/SOIL  
 ALS Vial : 20 Sample Multiplier: 1

Instrument :  
 MSVOA\_D  
 ClientSampleID :  
 SB-19(7.5-8.5)

Integration Parameters: RTEINT.P

Integrator: RTE  
 Smoothing : ON Filtering: 5  
 Sampling : 1 Min Area: 3 % of largest Peak  
 Start Thrs: 0.2 Max Peaks: 100  
 Stop Thrs : 0 Peak Location: TOP

If leading or trailing edge < 100 prefer < Baseline drop else tangent >  
 Peak separation: 5

Method : Z:\VOASRV\HPCHEM1\MSVOA\_D\METHOD\82D030719S.M  
 Title : SW846 8260

72	14.333	1308	1311	1313	rBV	3548998	7194304	27.96%	1.343%
73	14.372	1313	1315	1319	rVV4	2570451	5700302	22.15%	1.064%
74	14.441	1319	1322	1324	rVV2	4295236	7614216	29.59%	1.421%
75	14.471	1324	1325	1328	rVV2	2938790	4143974	16.10%	0.773%
76	14.520	1328	1330	1334	rVB4	1522098	2960115	11.50%	0.552%
77	14.618	1336	1340	1342	rBV3	1623310	2577080	10.01%	0.481%
78	14.707	1347	1349	1350	rVB2	364256	417347	1.62%	0.078%
79	14.737	1350	1352	1355	rVB2	1073929	1647051	6.40%	0.307%
80	14.806	1356	1359	1366	rBV6	3576113	9137238	35.51%	1.705%
81	14.894	1366	1368	1370	rBV	2414511	3158556	12.27%	0.589%
82	14.943	1370	1373	1376	rVB3	2752426	4554188	17.70%	0.850%
83	15.022	1376	1381	1382	rBV2	2194789	4379319	17.02%	0.817%
84	15.121	1389	1391	1395	rVV2	576660	1195533	4.65%	0.223%
85	15.219	1398	1401	1404	rVB5	776184	1857836	7.22%	0.347%
86	15.278	1404	1407	1409	rBV4	1828962	2399330	9.32%	0.448%
87	15.317	1409	1411	1416	rVB2	2237757	3164973	12.30%	0.591%
88	15.426	1419	1422	1425	rVV2	1247067	1647284	6.40%	0.307%
89	15.475	1425	1427	1429	rVB3	184990	287131	1.12%	0.054%
90	15.701	1446	1450	1452	rVB5	147121	338105	1.31%	0.063%
91	15.810	1457	1461	1464	rBV3	169805	286004	1.11%	0.053%

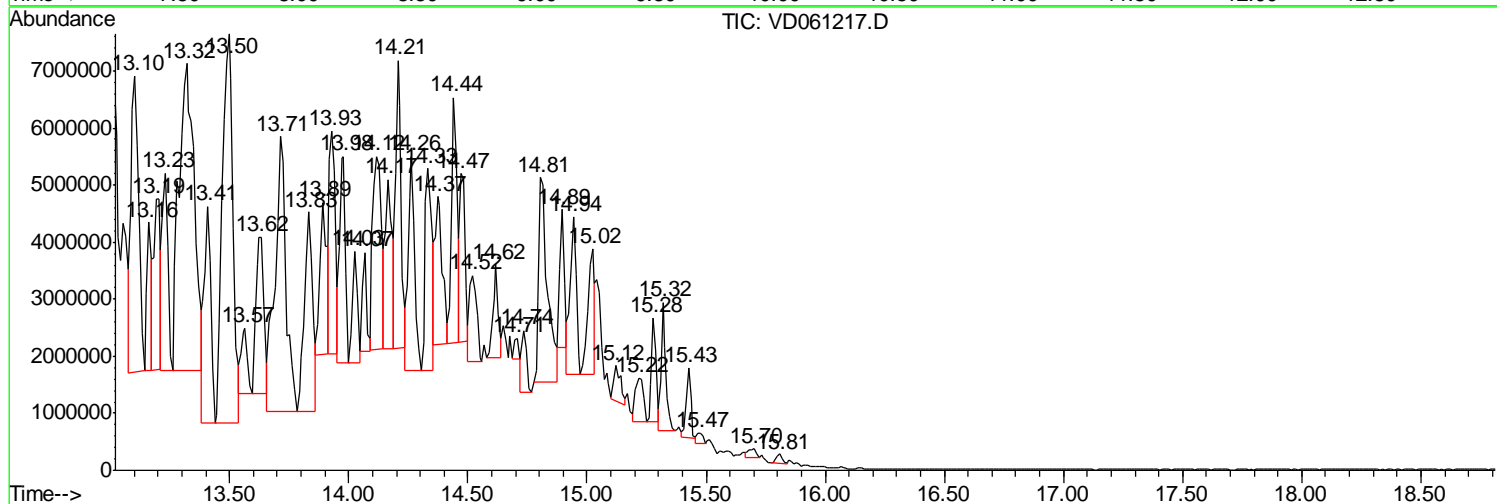
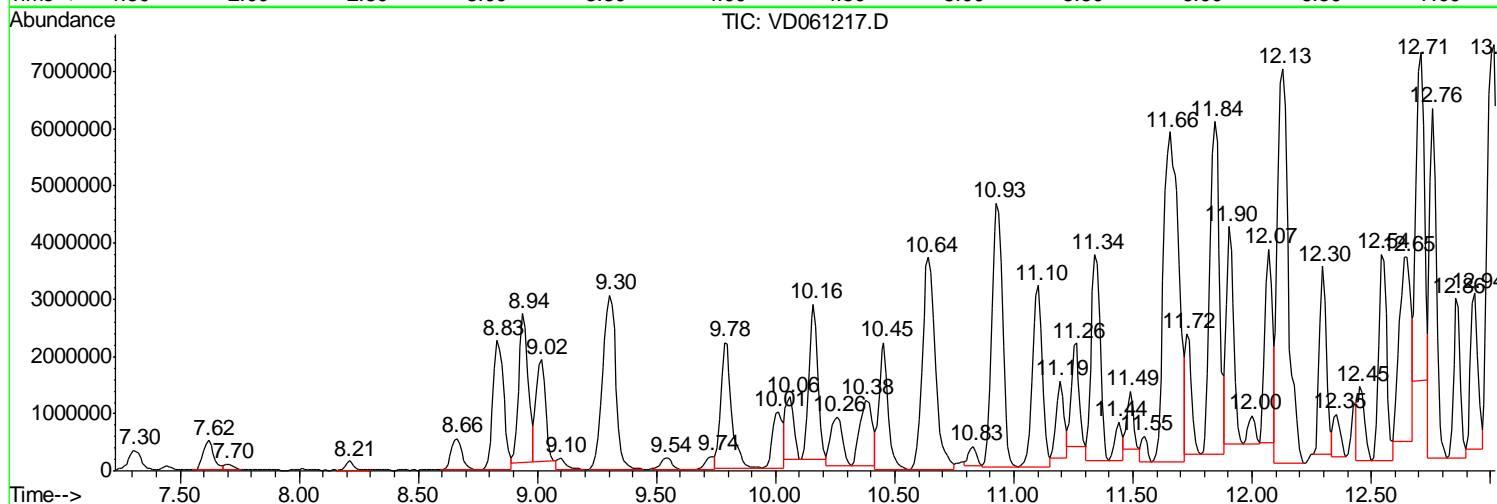
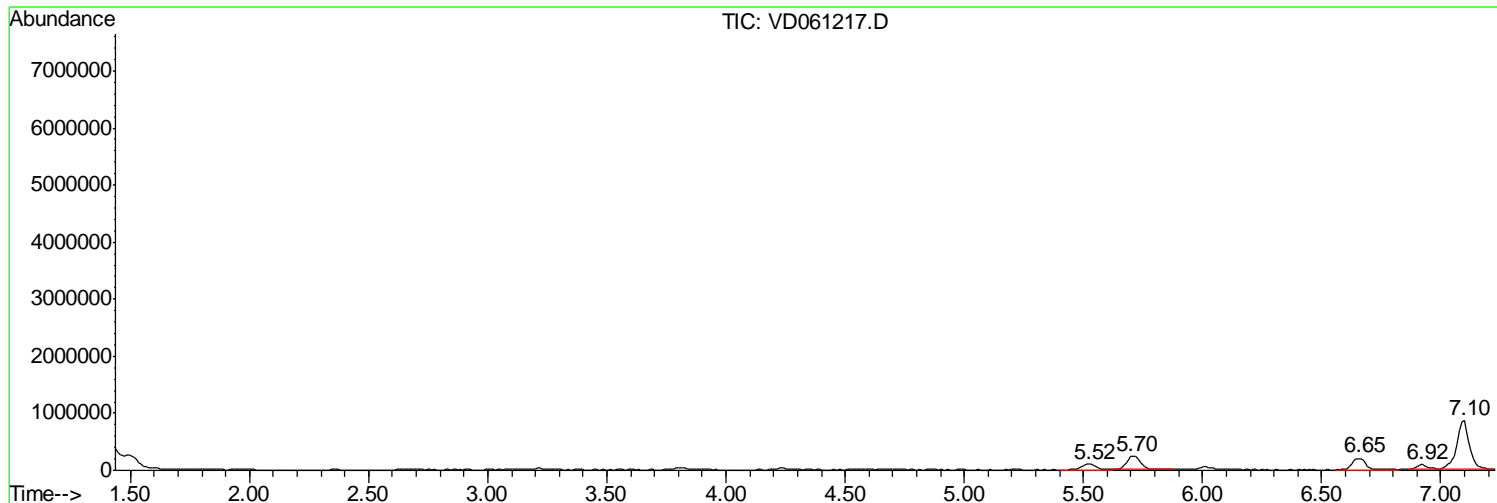
Sum of corrected areas: 535815429

Data Path : Z:\VOASRV\HPCHEM1\MSVOA D\DATA\VD032019\  
 Data File : VD061217.D  
 Acq On : 20 Mar 2019 19:26  
 Operator : VA/AP  
 Sample : K2004-03  
 Misc : 5.02α/5ml/MSVOA D/SOIL  
 ALS Vial : 20 Sample Multiplier: 1

**Instrument :**  
 MSVOA\_D  
**Client Sampled :**  
 SB-19(7.5-8.5)

Quant Method : Z:\VOASRV\HPCHEM1\MSVOA\_D\METHOD\82D030719S.M  
 Quant Title : SW846 8260

TIC Library : C:\DATABASE\NIST11.L  
 TIC Integration Parameters: LSCINT.P



Data Path : Z:\VOASRV\HPCHEM1\MSVOA D\DATA\VD032019\  
 Data File : VD061217.D  
 Acq On : 20 Mar 2019 19:26  
 Operator : VA/AP  
 Sample : K2004-03  
 Misc : 5.02α/5ml/MSVOA D/SOIL  
 ALS Vial : 20 Sample Multiplier: 1

Instrument :  
 MSVOA\_D  
 ClientSampleID :  
 SB-19(7.5-8.5)

Quant Method : Z:\VOASRV\HPCHEM1\MSVOA\_D\METHOD\82D030719S.M  
 Quant Title : SW846 8260

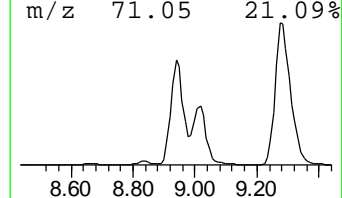
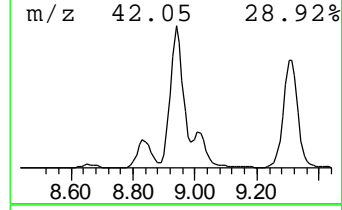
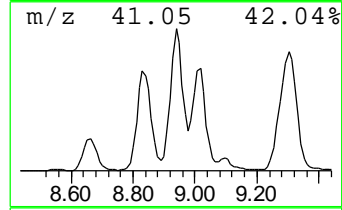
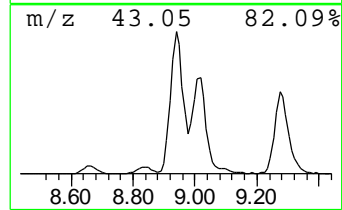
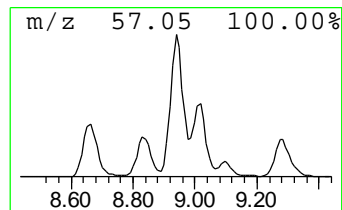
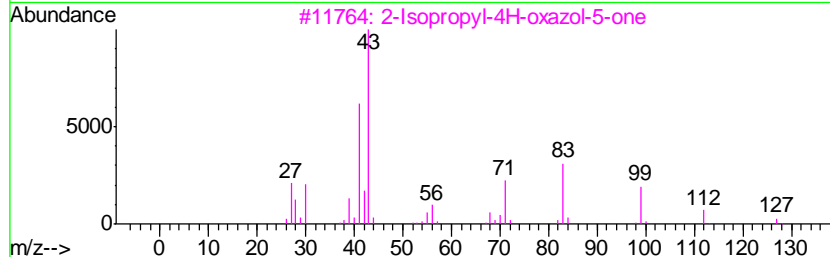
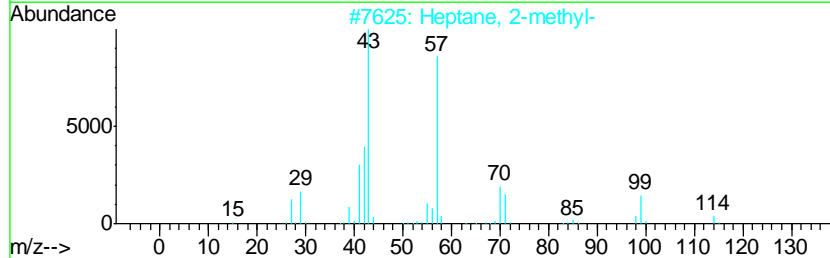
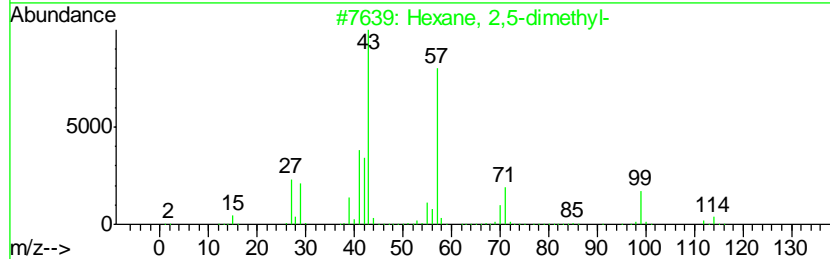
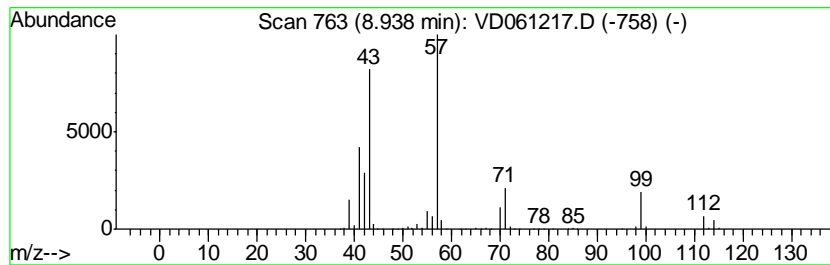
TIC Library : C:\DATABASE\NIST11.L  
 TIC Integration Parameters: LSCINT.P

\*\*\*\*\*  
 Peak Number 1 Hexane, 2,5-dimethyl- Concentration Rank 3

R.T.	EstConc	Area	Relative to ISTD	R.T.
8.94	871.77 ug/l	7141220	1,4-Difluorobenzene	8.21

Hit#	of	Tentative ID	MW	MolForm	CAS#	Qual
1	5	Hexane, 2,5-dimethyl-	114	C8H18	000592-13-2	90
2		Heptane, 2-methyl-	114	C8H18	000592-27-8	72
3		2-Isopropyl-4H-oxazol-5-one	127	C6H9NO2	1000190-01-9	47
4		Butane, 2,2-dimethyl-	86	C6H14	000075-83-2	38
5		2,5-Hexanedione	114	C6H10O2	000110-13-4	38



Data Path : Z:\VOASRV\HPCHEM1\MSVOA D\DATA\VD032019\  
 Data File : VD061217.D  
 Acq On : 20 Mar 2019 19:26  
 Operator : VA/AP  
 Sample : K2004-03  
 Misc : 5.02µ/5ml/MSVOA D/SOIL  
 ALS Vial : 20 Sample Multiplier: 1

Instrument :  
 MSVOA\_D  
 ClientSampleID :  
 SB-19(7.5-8.5)

Quant Method : Z:\VOASRV\HPCHEM1\MSVOA\_D\METHOD\82D030719S.M  
 Quant Title : SW846 8260

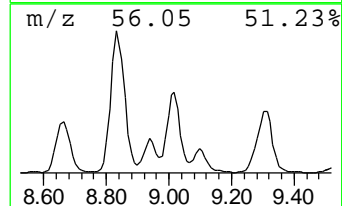
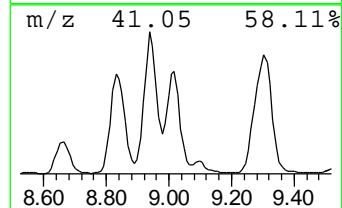
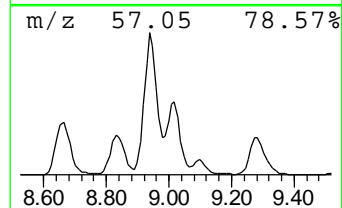
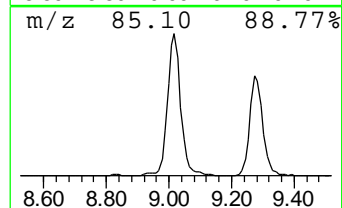
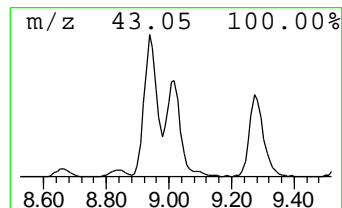
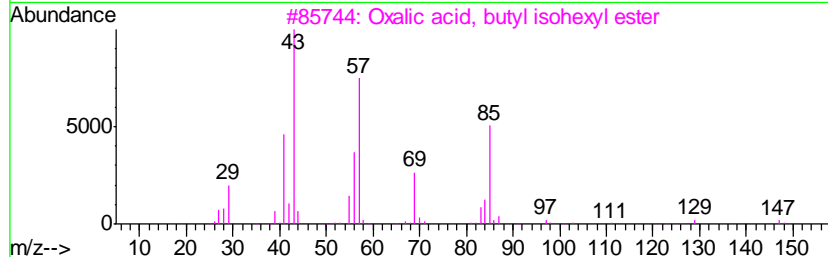
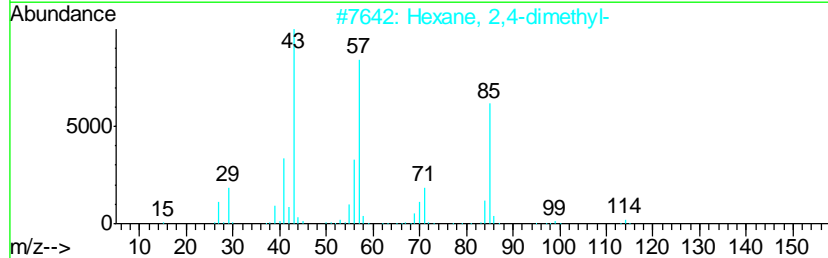
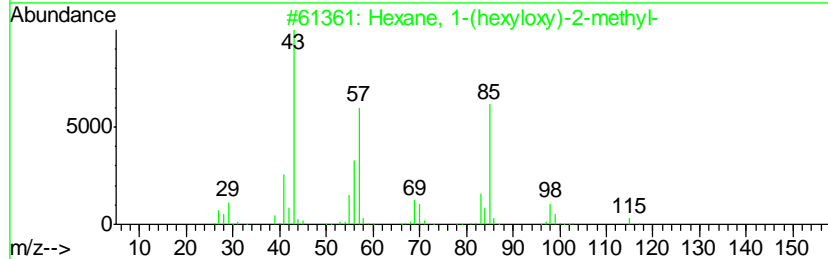
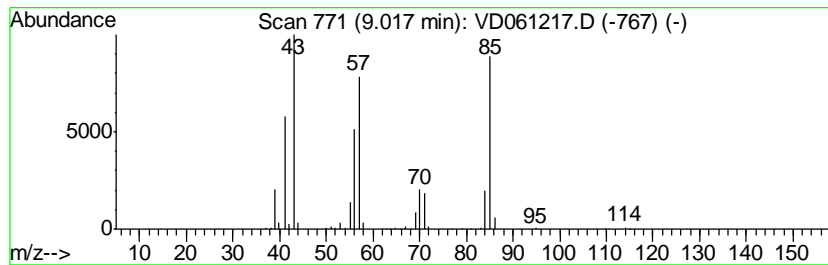
TIC Library : C:\DATABASE\NIST11.L  
 TIC Integration Parameters: LSCINT.P

\*\*\*\*\*  
 Peak Number 2 Hexane, 1-(hexyloxy)-2-methyl- Concentration Rank 9

R.T.	EstConc	Area	Relative to ISTD	R.T.
9.02	582.34 ug/l	4770320	1,4-Difluorobenzene	8.21

Hit#	of	Tentative ID	MW	MolForm	CAS#	Qual
1	5	Hexane, 1-(hexyloxy)-2-methyl-	200	C13H28O	074421-17-3	78
2		Hexane, 2,4-dimethyl-	114	C8H18	000589-43-5	72
3		Oxalic acid, butyl isohexyl ester	230	C12H22O4	1000309-32-7	72
4		Hexane, 2-methyl-	100	C7H16	000591-76-4	72
5		Pentane, 2,4-dimethyl-	100	C7H16	000108-08-7	59



Data Path : Z:\VOASRV\HPCHEM1\MSVOA D\DATA\VD032019\  
 Data File : VD061217.D  
 Acq On : 20 Mar 2019 19:26  
 Operator : VA/AP  
 Sample : K2004-03  
 Misc : 5.02µ/5ml/MSVOA D/SOIL  
 ALS Vial : 20 Sample Multiplier: 1

Instrument :  
 MSVOA\_D  
 ClientSampleID :  
 SB-19(7.5-8.5)

Quant Method : Z:\VOASRV\HPCHEM1\MSVOA\_D\METHOD\82D030719S.M  
 Quant Title : SW846 8260

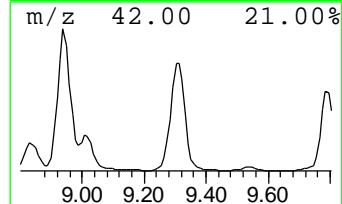
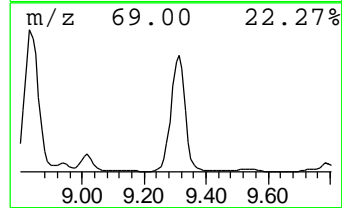
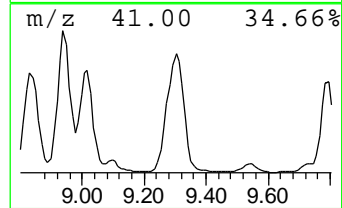
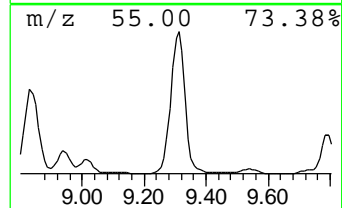
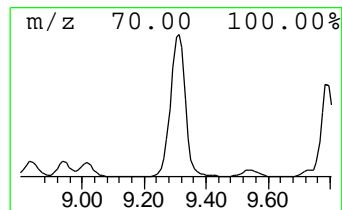
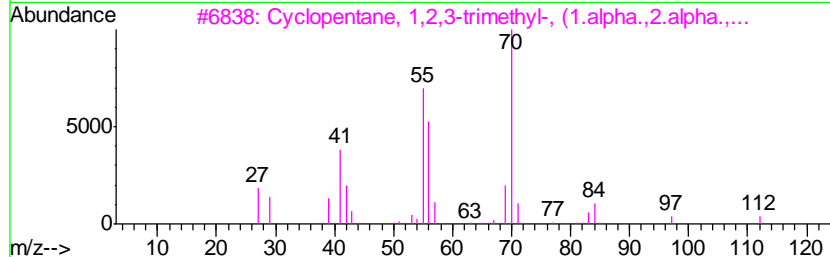
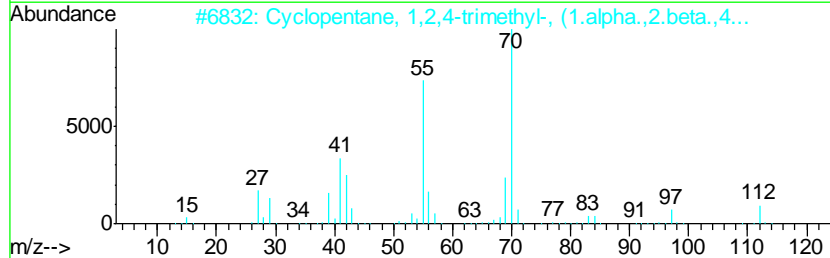
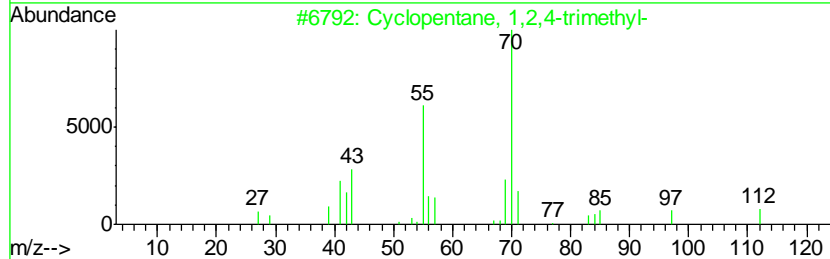
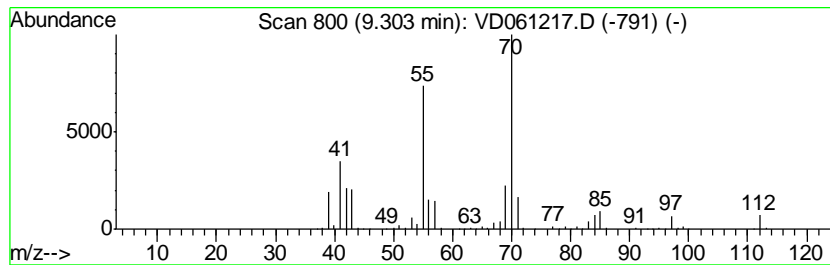
TIC Library : C:\DATABASE\NIST11.L  
 TIC Integration Parameters: LSCINT.P

\*\*\*\*\*  
 Peak Number 3 Cyclopentane, 1,2,4-trimethyl- Concentration Rank 1

R.T.	EstConc	Area	Relative to ISTD	R.T.
9.30	1446.61 ug/l	11850000	1,4-Difluorobenzene	8.21

Hit#	of	Tentative ID	MW	MolForm	CAS#	Qual
1	5	Cyclopentane, 1,2,4-trimethyl-	112	C8H16	002815-58-9	95
2		Cyclopentane, 1,2,4-trimethyl-, ...	112	C8H16	016883-48-0	90
3		Cyclopentane, 1,2,3-trimethyl-, ...	112	C8H16	002613-69-6	83
4		Cyclopentane, 1,2,4-trimethyl-, ...	112	C8H16	004850-28-6	83
5		Hexane, 2-methyl-4-methylene-	112	C8H16	003404-80-6	72



Data Path : Z:\VOASRV\HPCHEM1\MSVOA D\DATA\VD032019\  
 Data File : VD061217.D  
 Acq On : 20 Mar 2019 19:26  
 Operator : VA/AP  
 Sample : K2004-03  
 Misc : 5.02µ/5ml/MSVOA D/SOIL  
 ALS Vial : 20 Sample Multiplier: 1

Instrument :  
 MSVOA\_D  
 ClientSampleID :  
 SB-19(7.5-8.5)

Quant Method : Z:\VOASRV\HPCHEM1\MSVOA\_D\METHOD\82D030719S.M  
 Quant Title : SW846 8260

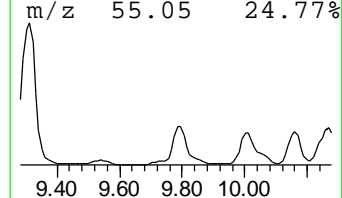
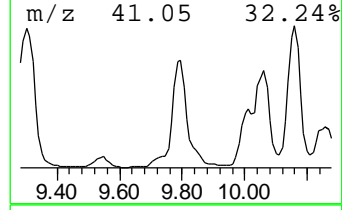
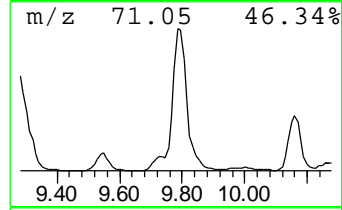
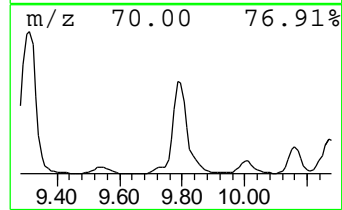
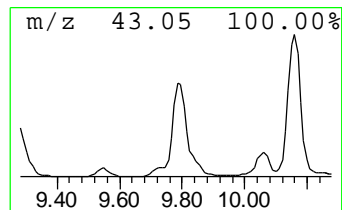
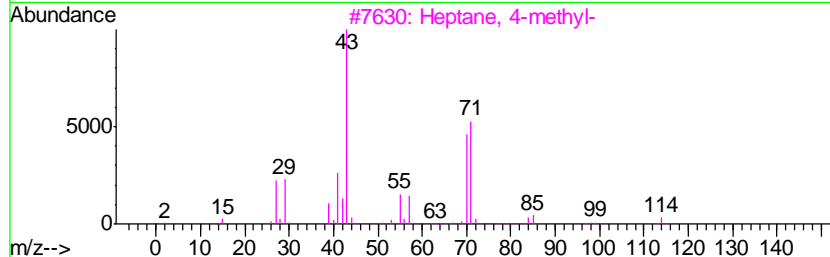
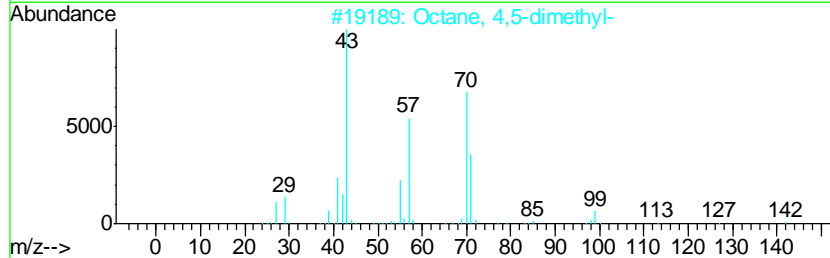
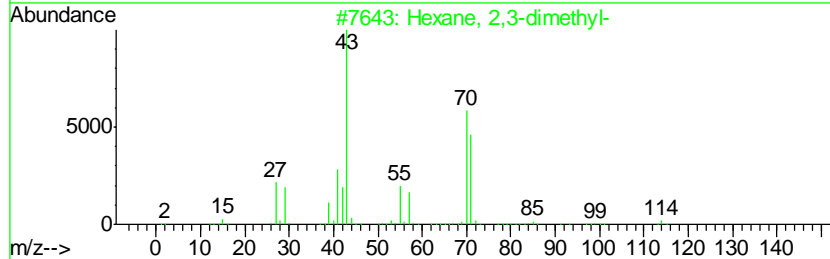
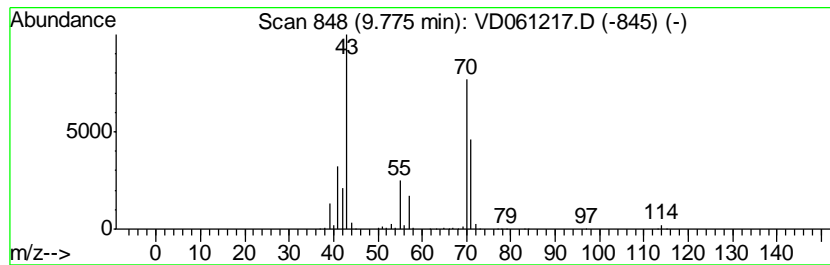
TIC Library : C:\DATABASE\NIST11.L  
 TIC Integration Parameters: LSCINT.P

\*\*\*\*\*  
 Peak Number 4 Hexane, 2,3-dimethyl- Concentration Rank 5

R.T.	EstConc	Area	Relative to ISTD	R.T.
9.78	840.23 ug/l	6882820	1,4-Difluorobenzene	8.21

Hit#	of	Tentative ID	MW	MolForm	CAS#	Qual
1	5	Hexane, 2,3-dimethyl-	114	C8H18	000584-94-1	91
2		Octane, 4,5-dimethyl-	142	C10H22	015869-96-2	64
3		Heptane, 4-methyl-	114	C8H18	000589-53-7	58
4		Pentane, 3-ethyl-2-methyl-	114	C8H18	000609-26-7	50
5		Pyrrolidine	71	C4H9N	000123-75-1	50





Data Path : Z:\VOASRV\HPCHEM1\MSVOA D\DATA\VD032019\  
 Data File : VD061217.D  
 Acq On : 20 Mar 2019 19:26  
 Operator : VA/AP  
 Sample : K2004-03  
 Misc : 5.02α/5ml/MSVOA D/SOIL  
 ALS Vial : 20 Sample Multiplier: 1

Instrument :  
 MSVOA\_D  
 ClientSampleID :  
 SB-19(7.5-8.5)

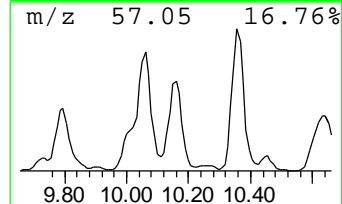
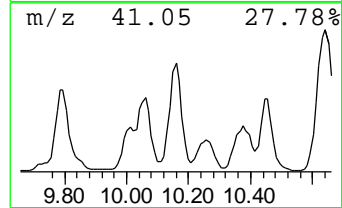
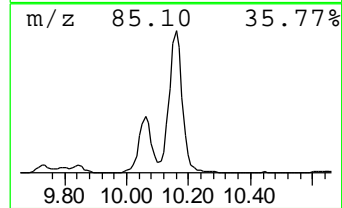
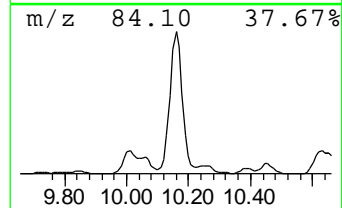
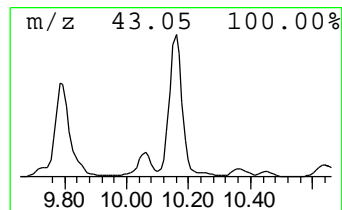
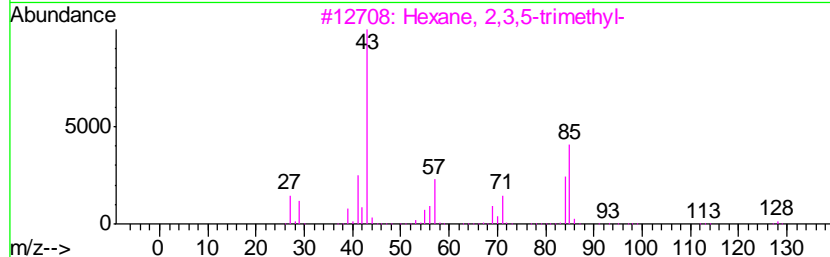
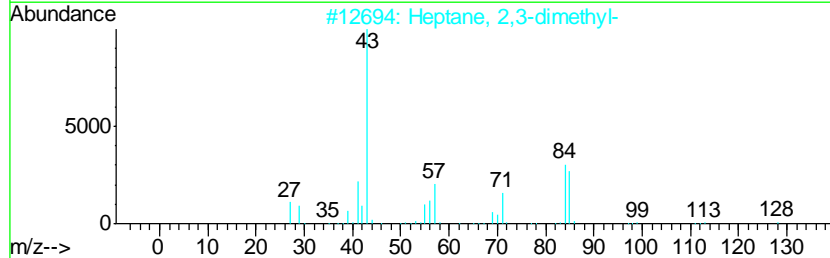
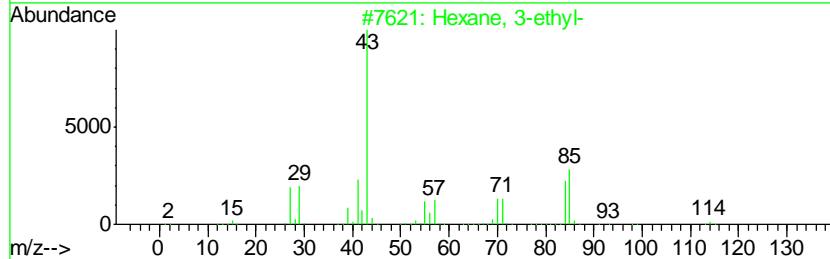
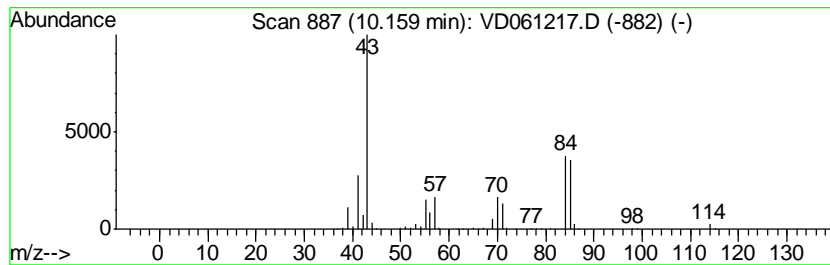
Quant Method : Z:\VOASRV\HPCHEM1\MSVOA\_D\METHOD\82D030719S.M  
 Quant Title : SW846 8260

TIC Library : C:\DATABASE\NIST11.L  
 TIC Integration Parameters: LSCINT.P

\*\*\*\*\*  
 Peak Number 5 Hexane, 3-ethyl- Concentration Rank 4

R.T.	EstConc	Area	Relative to ISTD	R.T.
10.16	868.33 ug/l	7112990	1,4-Difluorobenzene	8.21

Hit#	of	Tentative ID	MW	MolForm	CAS#	Qual
1	5	Hexane, 3-ethyl-	114	C8H18	000619-99-8	91
2		Heptane, 2,3-dimethyl-	128	C9H20	003074-71-3	78
3		Hexane, 2,3,5-trimethyl-	128	C9H20	001069-53-0	59
4		1-Pentanol, 2,2-dimethyl-	116	C7H16O	002370-12-9	50
5		Hexane, 3,3-dimethyl-	114	C8H18	000563-16-6	50



Data Path : Z:\VOASRV\HPCHEM1\MSVOA D\DATA\VD032019\  
 Data File : VD061217.D  
 Acq On : 20 Mar 2019 19:26  
 Operator : VA/AP  
 Sample : K2004-03  
 Misc : 5.02µ/5ml/MSVOA D/SOIL  
 ALS Vial : 20 Sample Multiplier: 1

Instrument :  
 MSVOA\_D  
 ClientSampleID :  
 SB-19(7.5-8.5)

Quant Method : Z:\VOASRV\HPCHEM1\MSVOA\_D\METHOD\82D030719S.M  
 Quant Title : SW846 8260

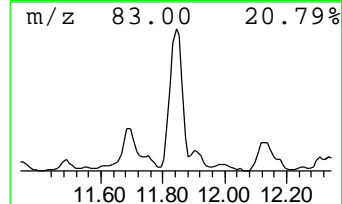
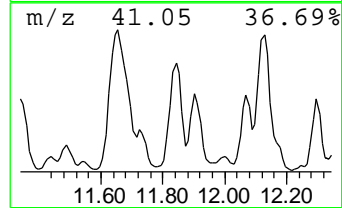
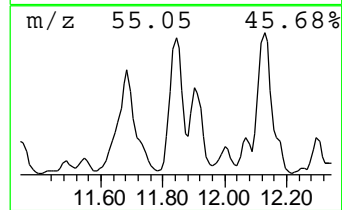
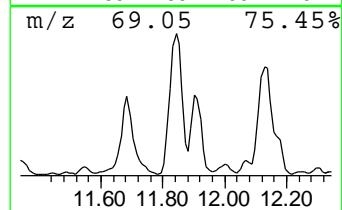
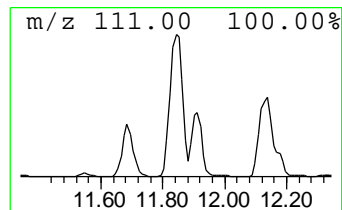
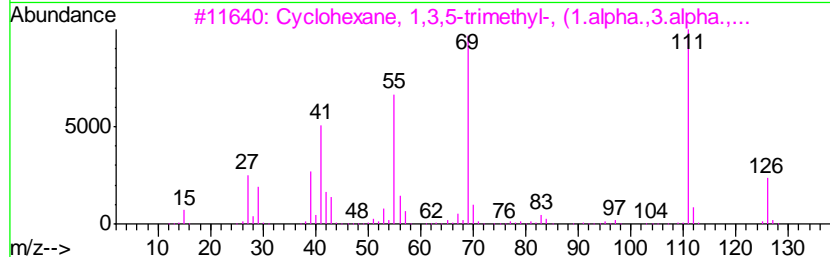
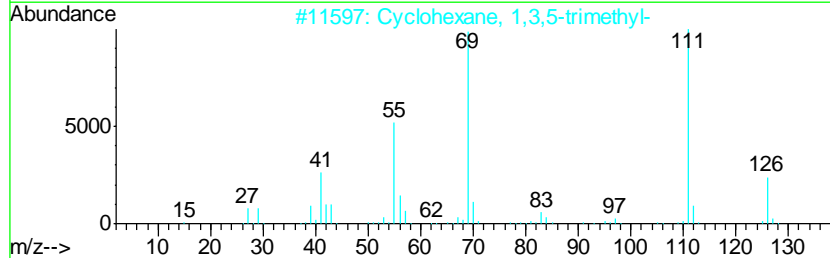
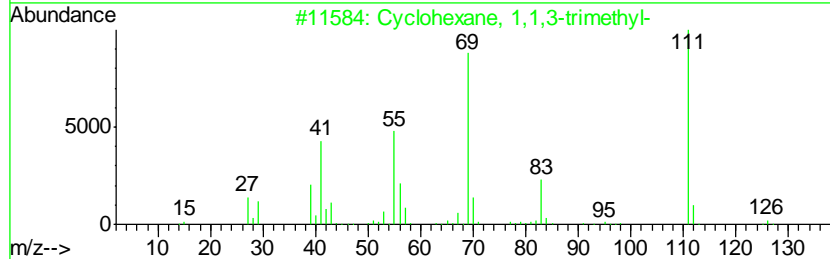
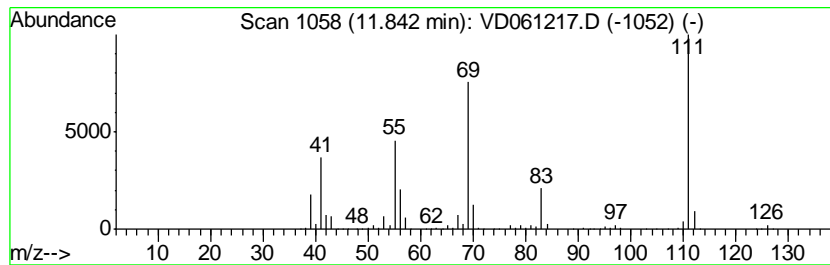
TIC Library : C:\DATABASE\NIST11.L  
 TIC Integration Parameters: LSCINT.P

\*\*\*\*\*  
 Peak Number 7 Cyclohexane, 1,1,3-trimethyl- Concentration Rank 10

R.T.	EstConc	Area	Relative to ISTD	R.T.
11.84	579.87 ug/l	16576000	Chlorobenzene-d5	12.36

Hit#	of	Tentative ID	MW	MolForm	CAS#	Qual
1	5	Cyclohexane, 1,1,3-trimethyl-	126	C9H18	003073-66-3	97
2		Cyclohexane, 1,3,5-trimethyl-	126	C9H18	001839-63-0	72
3		Cyclohexane, 1,3,5-trimethyl-, (...	126	C9H18	001795-27-3	72
4		Cyclooctane, (1-methylpropyl)-	168	C12H24	016538-89-9	72
5		1,1,4-Trimethylcyclohexane	126	C9H18	007094-27-1	64



Data Path : Z:\VOASRV\HPCHEM1\MSVOA D\DATA\VD032019\  
 Data File : VD061217.D  
 Acq On : 20 Mar 2019 19:26  
 Operator : VA/AP  
 Sample : K2004-03  
 Misc : 5.02µ/5ml/MSVOA D/SOIL  
 ALS Vial : 20 Sample Multiplier: 1

Instrument :  
 MSVOA\_D  
 ClientSampleID :  
 SB-19(7.5-8.5)

Quant Method : Z:\VOASRV\HPCHEM1\MSVOA\_D\METHOD\82D030719S.M  
 Quant Title : SW846 8260

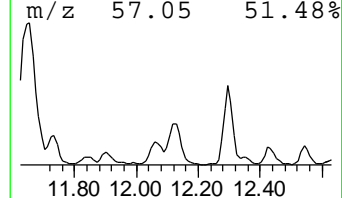
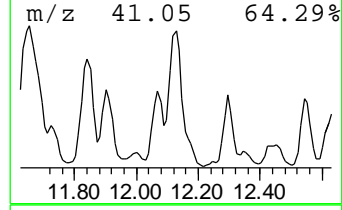
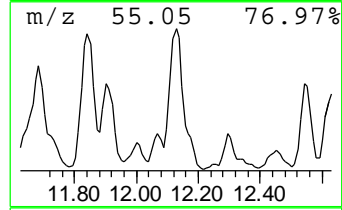
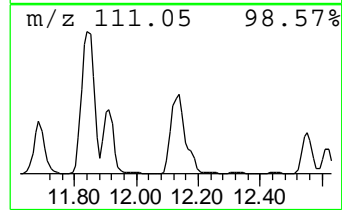
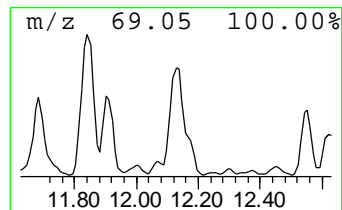
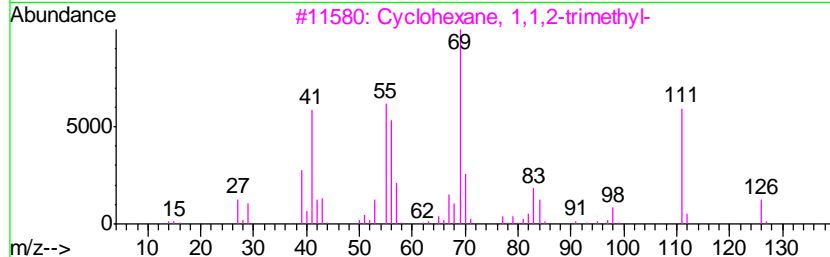
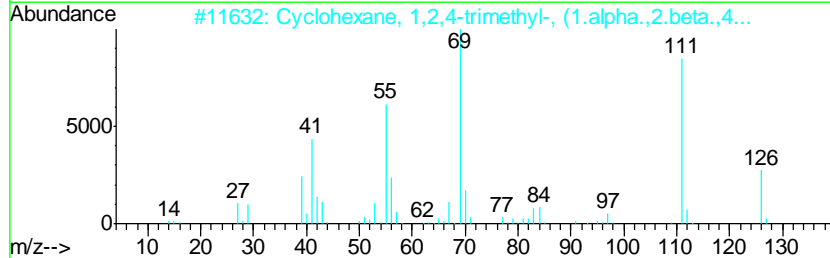
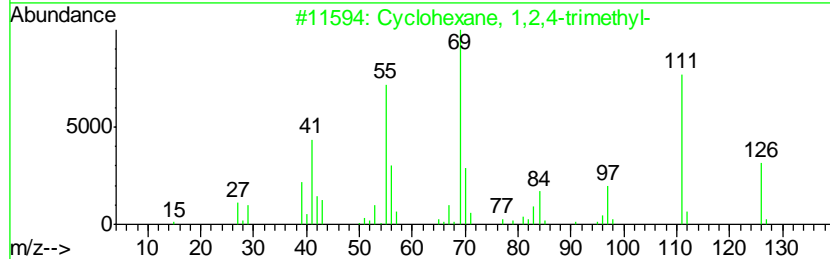
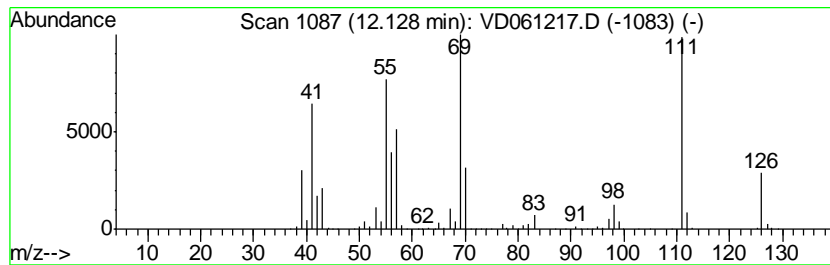
TIC Library : C:\DATABASE\NIST11.L  
 TIC Integration Parameters: LSCINT.P

\*\*\*\*\*  
 Peak Number 8 Cyclohexane, 1,2,4-trimethyl- Concentration Rank 7

R.T.	EstConc	Area	Relative to ISTD	R.T.
12.13	762.92 ug/l	21808900	Chlorobenzene-d5	12.36

Hit#	of	Tentative ID	MW	MolForm	CAS#	Qual
1	5	Cyclohexane, 1,2,4-trimethyl-	126	C9H18	002234-75-5	93
2		Cyclohexane, 1,2,4-trimethyl-, (...	126	C9H18	007667-60-9	87
3		Cyclohexane, 1,1,2-trimethyl-	126	C9H18	007094-26-0	74
4		Cyclohexane, 1,3,5-trimethyl-	126	C9H18	001839-63-0	72
5		Cyclohexane, 1,2,3-trimethyl-, (...	126	C9H18	001678-81-5	72



Data Path : Z:\VOASRV\HPCHEM1\MSVOA D\DATA\VD032019\  
 Data File : VD061217.D  
 Acq On : 20 Mar 2019 19:26  
 Operator : VA/AP  
 Sample : K2004-03  
 Misc : 5.02µ/5ml/MSVOA D/SOIL  
 ALS Vial : 20 Sample Multiplier: 1

Instrument :  
 MSVOA\_D  
 ClientSampleID :  
 SB-19(7.5-8.5)

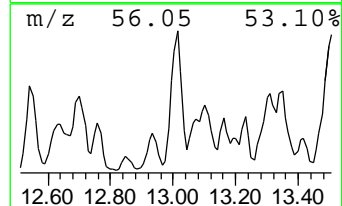
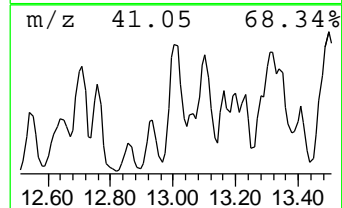
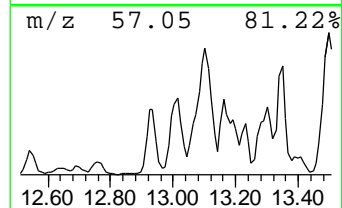
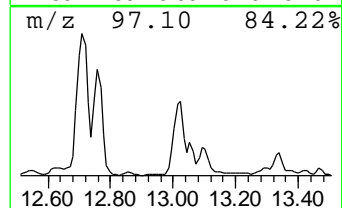
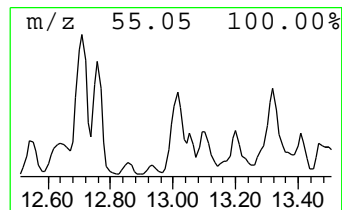
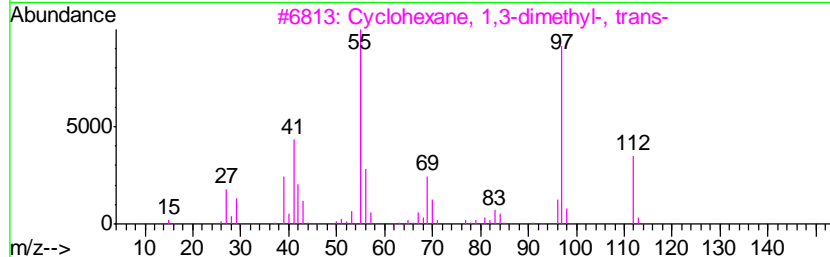
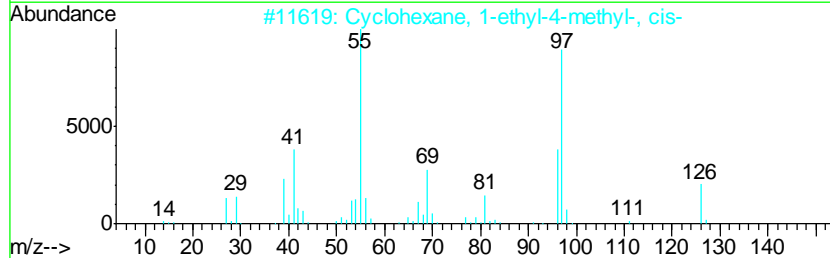
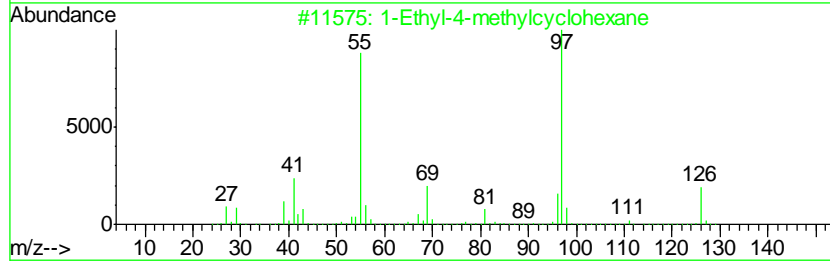
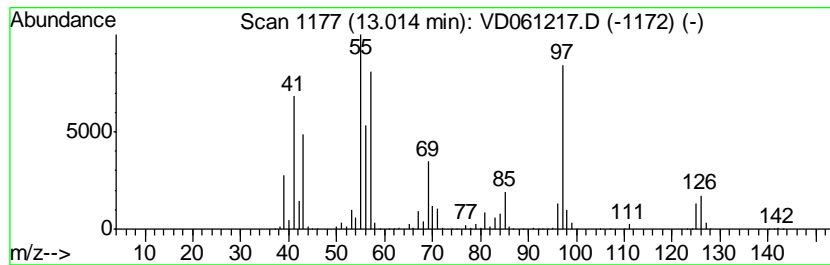
Quant Method : Z:\VOASRV\HPCHEM1\MSVOA\_D\METHOD\82D030719S.M  
 Quant Title : SW846 8260

TIC Library : C:\DATABASE\NIST11.L  
 TIC Integration Parameters: LSCINT.P

\*\*\*\*\*  
 Peak Number 9 1-Ethyl-4-methylcyclohexane Concentration Rank 8

R.T.	EstConc	Area	Relative to ISTD	R.T.
13.01	707.38 ug/l	20221100	Chlorobenzene-d5	12.36

Hit#	of	Tentative ID	MW	MolForm	CAS#	Qual
1	5	1-Ethyl-4-methylcyclohexane	126	C9H18	003728-56-1	60
2		Cyclohexane, 1-ethyl-4-methyl-, ...	126	C9H18	004926-78-7	49
3		Cyclohexane, 1,3-dimethyl-, trans-	112	C8H16	002207-03-6	47
4		Cyclohexane, 1-ethyl-2-methyl-	126	C9H18	003728-54-9	47
5		Cyclohexane, 1-ethyl-2-methyl-, ...	126	C9H18	004923-77-7	47



Data Path : Z:\VOASRV\HPCHEM1\MSVOA D\DATA\VD032019\  
 Data File : VD061217.D  
 Acq On : 20 Mar 2019 19:26  
 Operator : VA/AP  
 Sample : K2004-03  
 Misc : 5.02µ/5ml/MSVOA D/SOIL  
 ALS Vial : 20 Sample Multiplier: 1

Instrument :  
 MSVOA\_D  
 ClientSampled :  
 SB-19(7.5-8.5)

Quant Method : Z:\VOASRV\HPCHEM1\MSVOA\_D\METHOD\82D030719S.M  
 Quant Title : SW846 8260

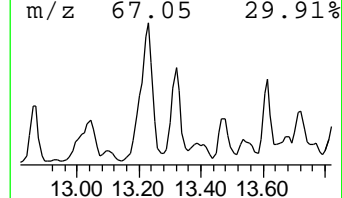
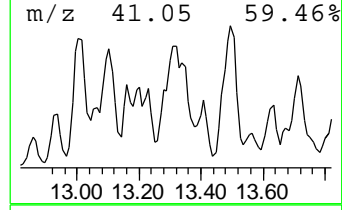
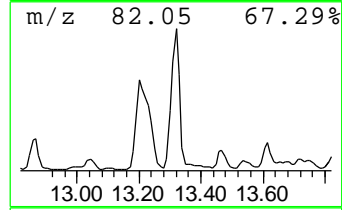
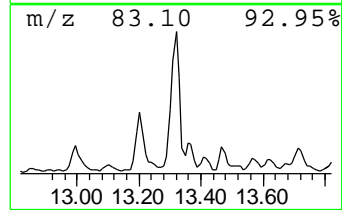
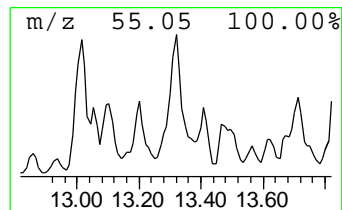
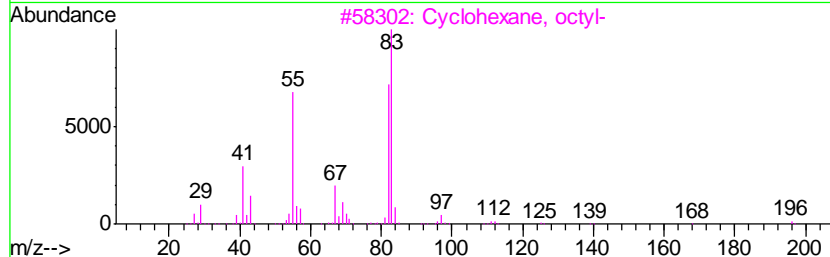
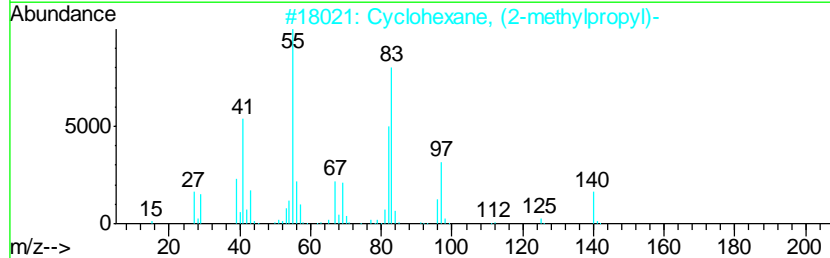
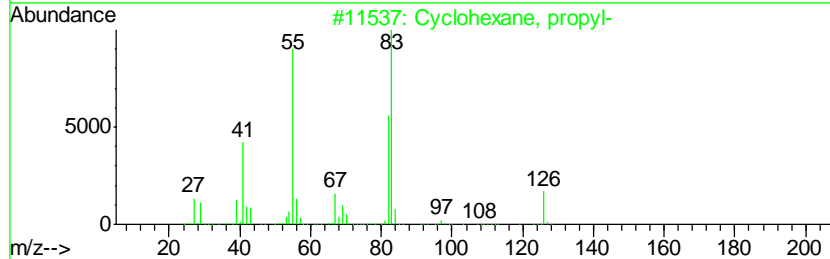
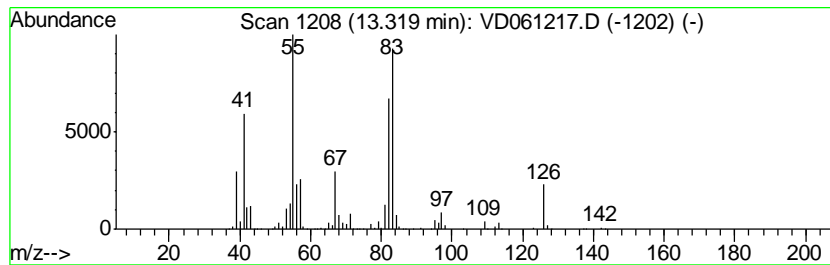
TIC Library : C:\DATABASE\NIST11.L  
 TIC Integration Parameters: LSCINT.P

\*\*\*\*\*  
 Peak Number 10 Cyclohexane, propyl- Concentration Rank 6

R.T.	EstConc	Area	Relative to ISTD	R.T.
13.32	831.69 ug/l	23774600	Chlorobenzene-d5	12.36

Hit#	of	Tentative ID	MW	MolForm	CAS#	Qual
1	5	Cyclohexane, propyl-	126	C9H18	001678-92-8	80
2		Cyclohexane, (2-methylpropyl)-	140	C10H20	001678-98-4	72
3		Cyclohexane, octyl-	196	C14H28	001795-15-9	64
4		Cyclohexane, ethyl-	112	C8H16	001678-91-7	59
5		Cyclohexane, (1-methylethyl)-	126	C9H18	000696-29-7	58



Data Path : Z:\VOASRV\HPCHEM1\MSVOA\_D\DATA\VD032019\  
 Data File : VD061217.D  
 Acq On : 20 Mar 2019 19:26  
 Operator : VA/AP  
 Sample : K2004-03  
 Misc : 5.02g/5ml/MSVOA\_D/SOIL  
 ALS Vial : 20 Sample Multiplier: 1

Instrument :  
 MSVOA\_D  
 ClientSampleId :  
 SB-19(7.5-8.5)

Quant Method : Z:\VOASRV\HPCHEM1\MSVOA\_D\METHOD\82D030719S.M  
 Quant Title : SW846 8260

TIC Library : C:\DATABASE\NIST11.L  
 TIC Integration Parameters: LSCINT.P

TIC Top Hit name	RT	EstConc	Units	Response	--Internal Standard--			
					#	RT	Resp	Conc
Hexane, 2,5-dimet...	8.94	871.8	ug/l	7141220	2	8.21	409580	50.0
Hexane, 1-(hexylo...	9.02	582.3	ug/l	4770320	2	8.21	409580	50.0
Cyclopentane, 1,2...	9.30	1446.6	ug/l	11850000	2	8.21	409580	50.0
Hexane, 2,3-dimet...	9.78	840.2	ug/l	6882820	2	8.21	409580	50.0
Hexane, 3-ethyl-	10.16	868.3	ug/l	7112990	2	8.21	409580	50.0
Cyclohexane, 1,1,...	11.84	579.9	ug/l	16576000	3	12.36	1429300	50.0
Cyclohexane, 1,2,...	12.13	762.9	ug/l	21808900	3	12.36	1429300	50.0
1-Ethyl-4-methylc...	13.01	707.4	ug/l	20221100	3	12.36	1429300	50.0
Cyclohexane, propyl-	13.32	831.7	ug/l	23774600	3	12.36	1429300	50.0