

Data Path : Z:\VOASRV\HPCHEM1\MSVOA D\DATA\VD041219\
 Data File : VD061789.D
 Acq On : 12 Apr 2019 20:23
 Operator : VA/AP
 Sample : K2360-02
 Misc : 5.14g/5ml/MSVOA D/SOIL
 ALS Vial : 21 Sample Multiplier: 1

Instrument :
 MSVOA_D
ClientSampleId :
 FK-BPM-01-E2-E2A-F2-F2A

Quant Time: Apr 12 23:56:05 2019
 Quant Method : Z:\VOASRV\HPCHEM1\MSVOA_D\METHOD\82D040619S.M
 Quant Title : SW846 8260
 QLast Update : Mon Apr 08 10:04:03 2019
 Response via : Initial Calibration

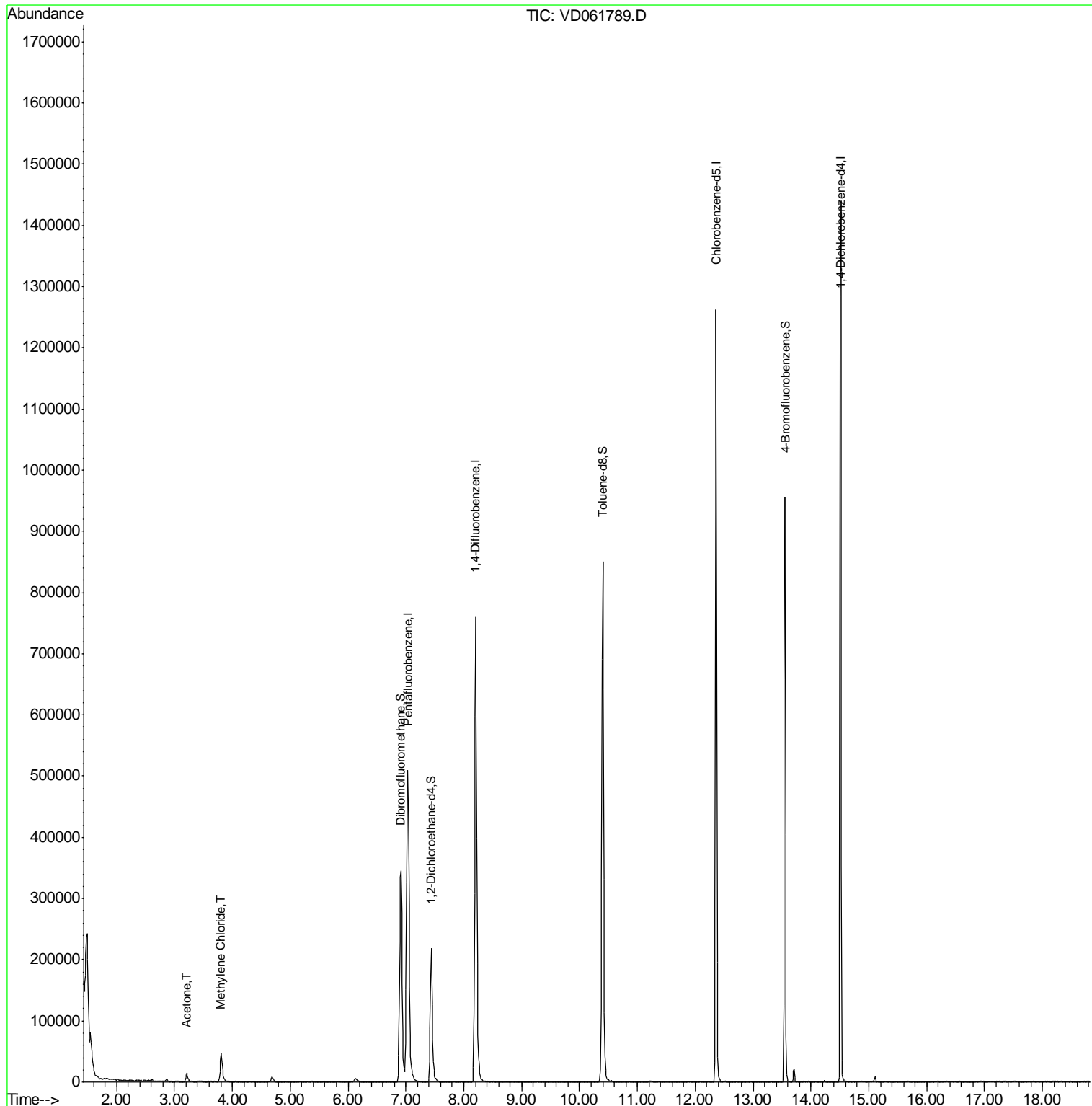
Internal Standards	R.T.	QIon	Response	Conc	Units	Dev(Min)
1) Pentafluorobenzene	7.03	168	548218	50.00	ug/l	0.00
34) 1,4-Difluorobenzene	8.20	114	897616	50.00	ug/l	0.00
63) Chlorobenzene-d5	12.36	117	773165	50.00	ug/l	0.00
72) 1,4-Dichlorobenzene-d4	14.51	152	356293	50.00	ug/l	0.00
System Monitoring Compounds						
33) 1,2-Dichloroethane-d4	7.44	65	221668	53.34	ug/l	-0.01
Spiked Amount	50.000		Recovery	=	106.68%	
35) Dibromofluoromethane	6.92	113	334978	53.87	ug/l	0.00
Spiked Amount	50.000		Recovery	=	107.74%	
50) Toluene-d8	10.40	98	724449	46.37	ug/l	0.00
Spiked Amount	50.000		Recovery	=	92.74%	
62) 4-Bromofluorobenzene	13.55	95	289888	53.58	ug/l	0.00
Spiked Amount	50.000		Recovery	=	107.16%	
Target Compounds						
16) Acetone	3.21	43	27236	21.926	ug/l	96
20) Methylene Chloride	3.81	84	34777	4.934	ug/l	94

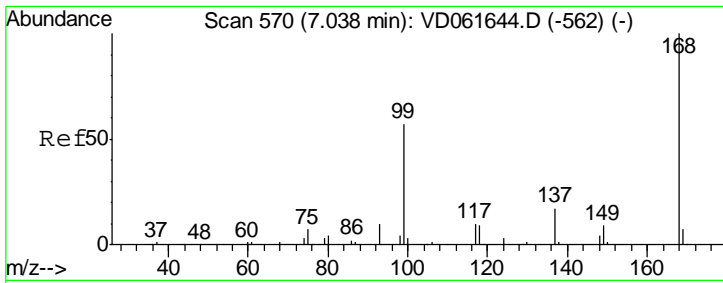
(#) = qualifier out of range (m) = manual integration (+) = signals summed

Data Path : Z:\VOASRV\HPCHEM1\MSVOA D\DATA\VD041219\
 Data File : VD061789.D
 Acq On : 12 Apr 2019 20:23
 Operator : VA/AP
 Sample : K2360-02
 Misc : 5.14µ/5ml/MSVOA D/SOIL
 ALS Vial : 21 Sample Multiplier: 1

Instrument :
 MSVOA_D
 Client Sampled :
 FK-BPM-01-E2-E2A-F2-F2A

Quant Time: Apr 12 23:56:05 2019
 Quant Method : Z:\VOASRV\HPCHEM1\MSVOA_D\METHOD\82D040619S.M
 Quant Title : SW846 8260
 QLast Update : Mon Apr 08 10:04:03 2019
 Response via : Initial Calibration

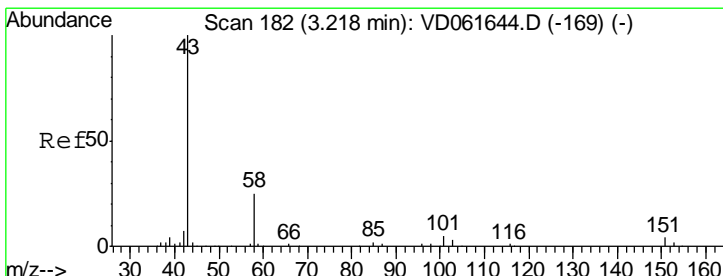
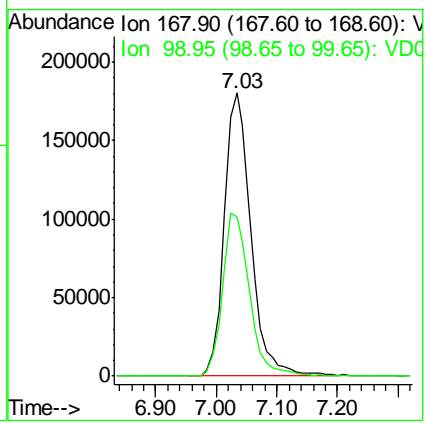
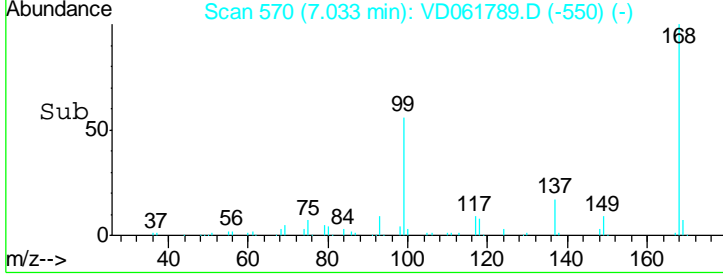
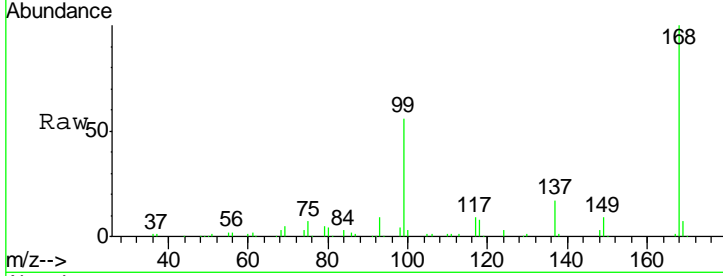




#1
 Pentafluorobenzene
 Concen: 50.000 ug/l
 RT: 7.03 min Scan# 570
 Delta R.T. -0.00 min
 Lab File: VD061789.D
 Acq: 12 Apr 2019 20:23

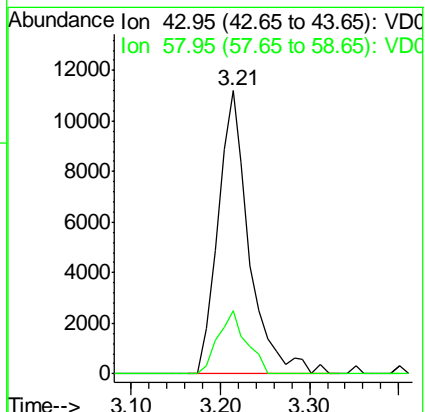
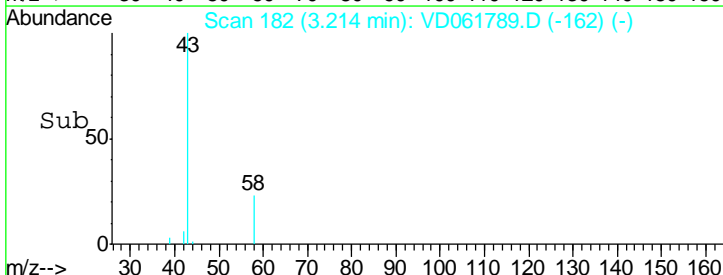
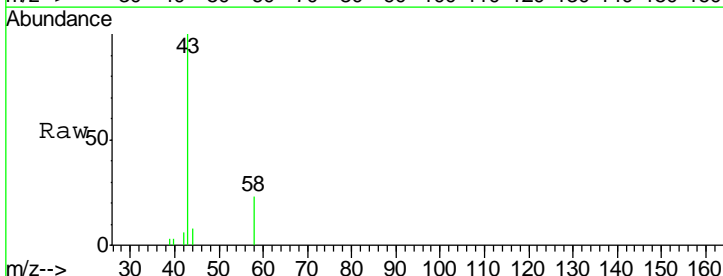
Instrument :
 MSVOA_D
ClientSampleId :
 FK-BPM-01-E2-E2A-F2-F2A

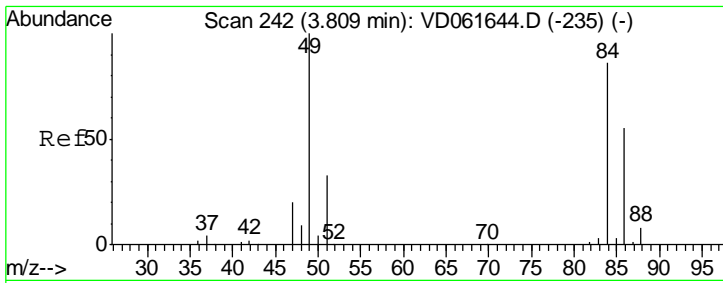
Tgt Ion	Resp	Lower	Upper
168	100		
99	56.3	46.8	70.2



#16
 Acetone
 Concen: 21.926 ug/l
 RT: 3.21 min Scan# 182
 Delta R.T. -0.00 min
 Lab File: VD061789.D
 Acq: 12 Apr 2019 20:23

Tgt Ion	Resp	Lower	Upper
43	100		
58	22.5	19.7	29.5

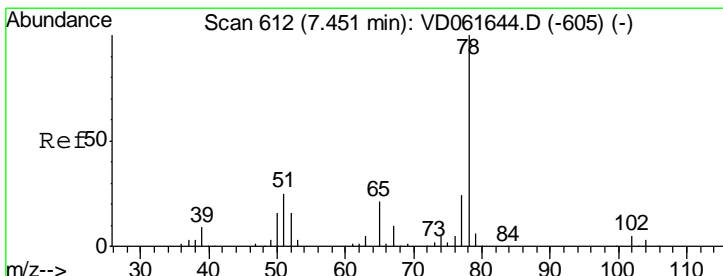
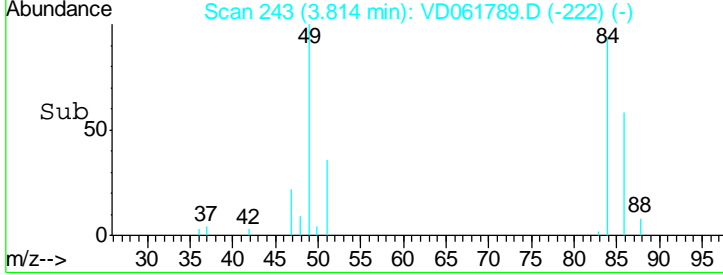
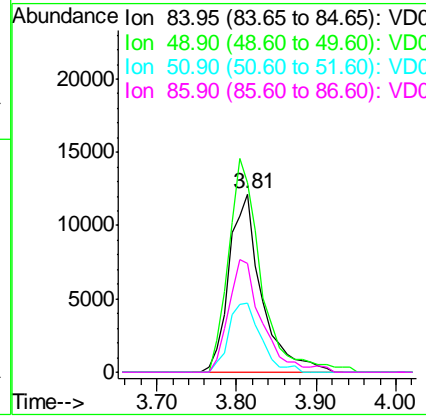
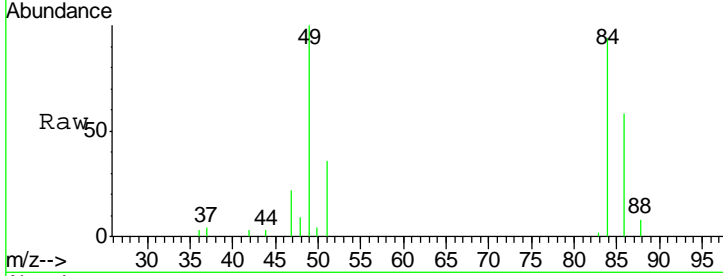




#20
 Methylene Chloride
 Concen: 4.934 ug/l
 RT: 3.81 min Scan# 243
 Delta R.T. 0.01 min
 Lab File: VD061789.D
 Acq: 12 Apr 2019 20:23

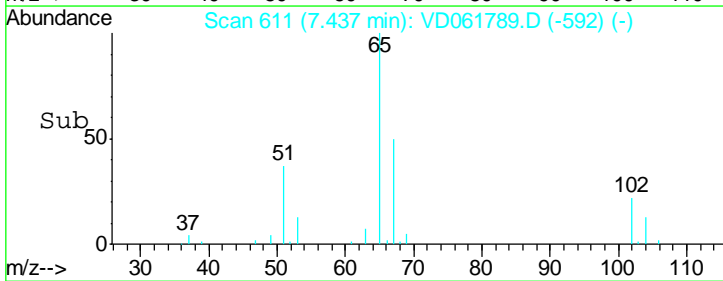
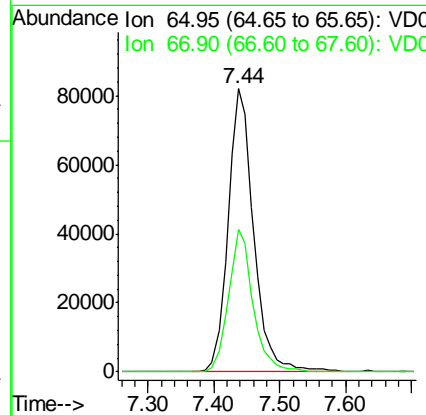
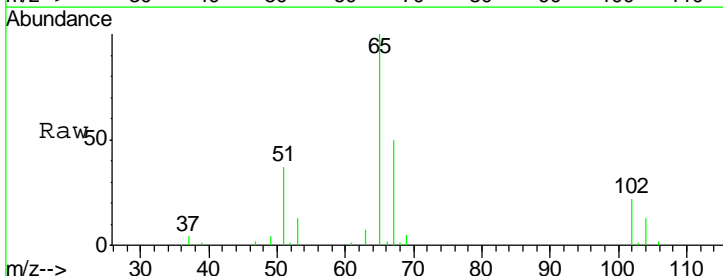
Instrument :
 MSVOA_D
ClientSampled :
 FK-BPM-01-E2-E2A-F2-F2A

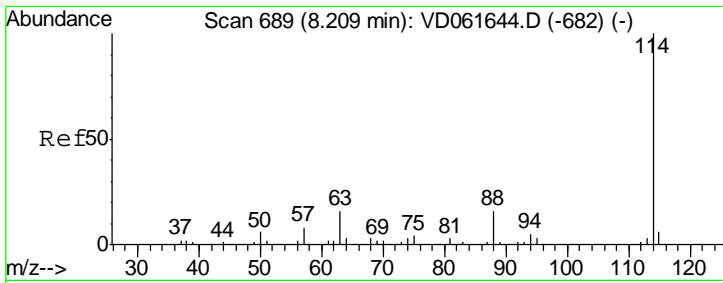
Tgt Ion	Resp	Lower	Upper
84	34777		
49	106.0	93.0	139.4
51	38.6	30.4	45.6
86	61.2	51.0	76.4



#33
 1,2-Dichloroethane-d4
 Concen: N.D. ug/l
 RT: 7.44 min Scan# 611
 Delta R.T. -0.01 min
 Lab File: VD061789.D
 Acq: 12 Apr 2019 20:23

Tgt Ion	Resp	Lower	Upper
65	221668		
67	50.2	0.0	99.4

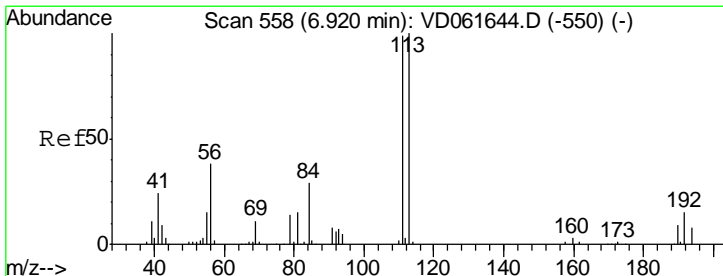
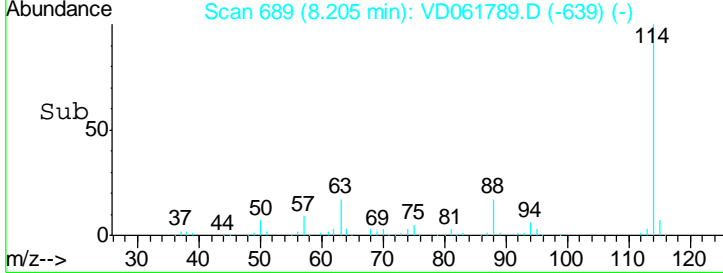
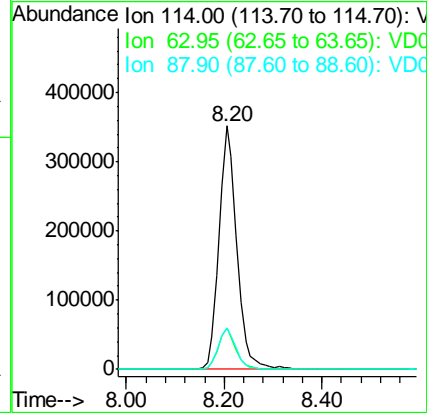
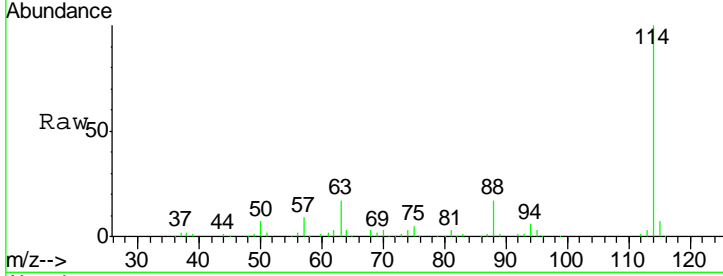




#34
 1,4-Difluorobenzene
 Concen: 50.000 ug/l
 RT: 8.20 min Scan# 689
 Delta R.T. -0.00 min
 Lab File: VD061789.D
 Acq: 12 Apr 2019 20:23

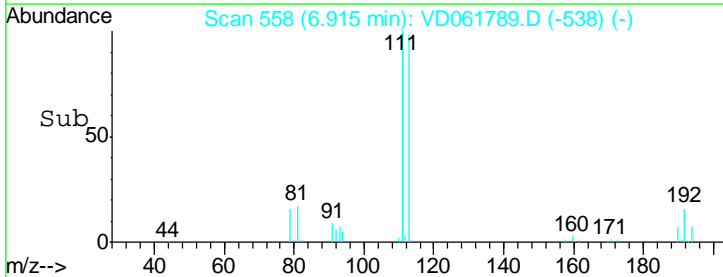
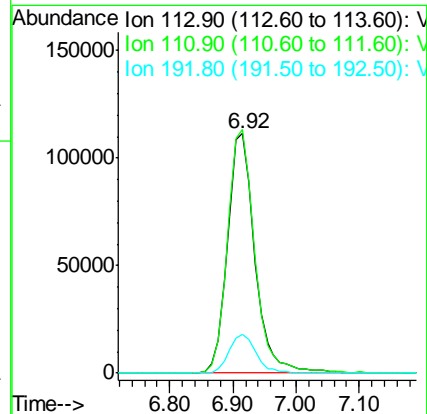
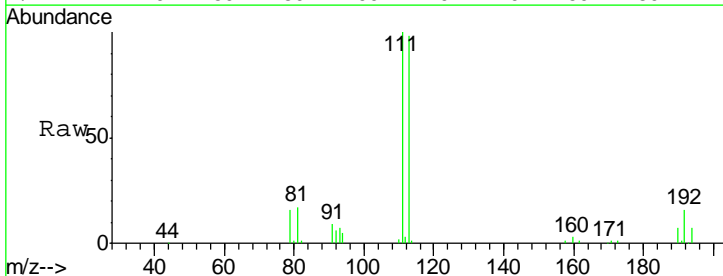
Instrument :
 MSVOA_D
ClientSampled :
 FK-BPM-01-E2-E2A-F2-F2A

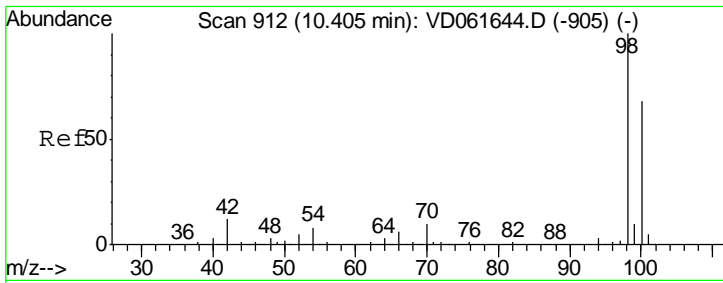
Tgt Ion	Resp	Lower	Upper
114	897616		
63	16.9	0.0	31.2
88	17.1	0.0	31.8



#35
 Dibromofluoromethane
 Concen: 50.000 ug/l
 RT: 6.92 min Scan# 558
 Delta R.T. -0.00 min
 Lab File: VD061789.D
 Acq: 12 Apr 2019 20:23

Tgt Ion	Resp	Lower	Upper
113	334978		
111	101.6	79.3	118.9
192	16.3	12.3	18.5



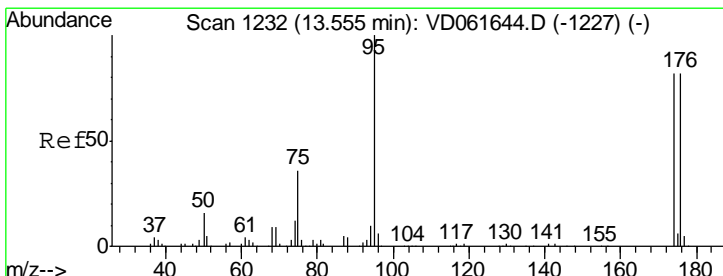
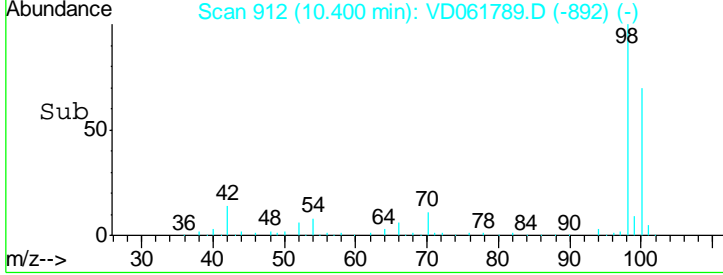
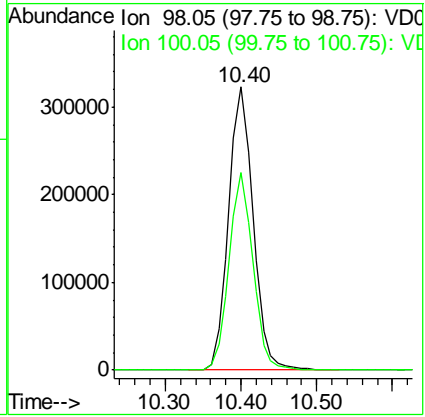
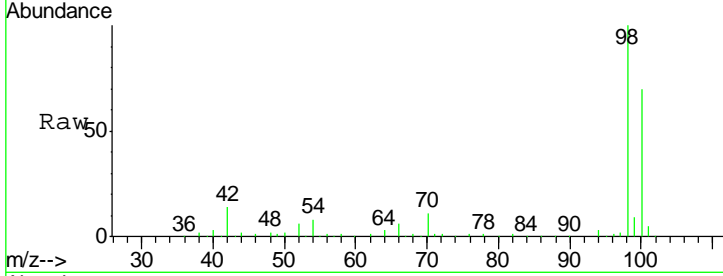


#50
 Toluene-d8
 Concen: N.D. ug/l
 RT: 10.40 min Scan# 912
 Delta R.T. -0.00 min
 Lab File: VD061789.D
 Acq: 12 Apr 2019 20:23

Instrument :
 MSVOA_D
ClientSampled :
 FK-BPM-01-E2-E2A-F2-F2A

Tgt Ion: 98 Resp: 724449

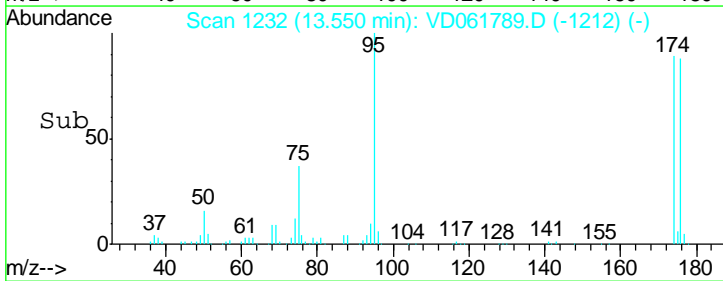
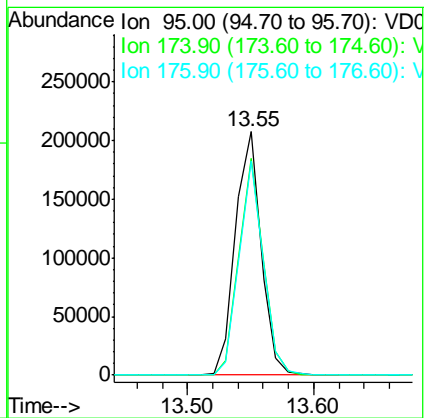
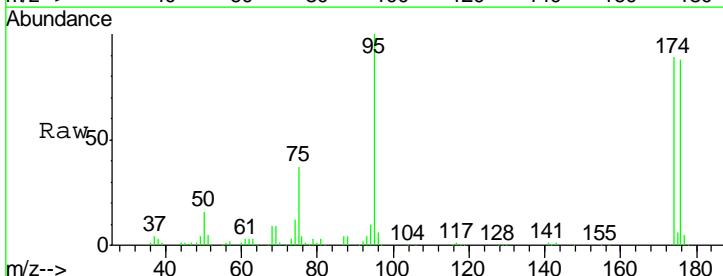
Ion	Ratio	Lower	Upper
98	100		
100	69.8	55.4	83.0

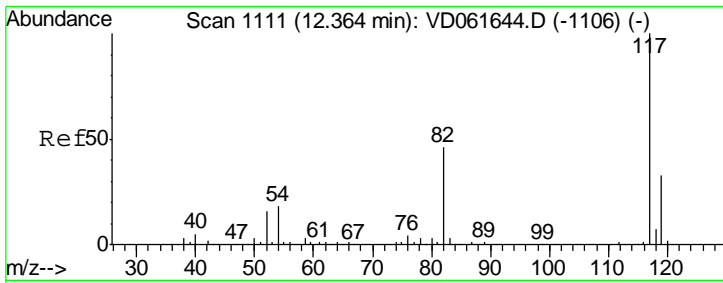


#62
 4-Bromofluorobenzene
 Concen: N.D. ug/l
 RT: 13.55 min Scan# 1232
 Delta R.T. -0.00 min
 Lab File: VD061789.D
 Acq: 12 Apr 2019 20:23

Tgt Ion: 95 Resp: 289888

Ion	Ratio	Lower	Upper
95	100		
174	89.1	0.0	164.6
176	88.2	0.0	165.0

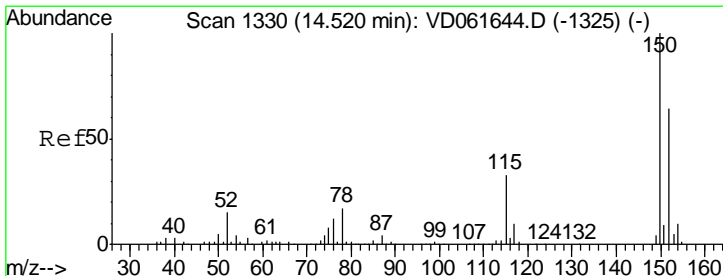
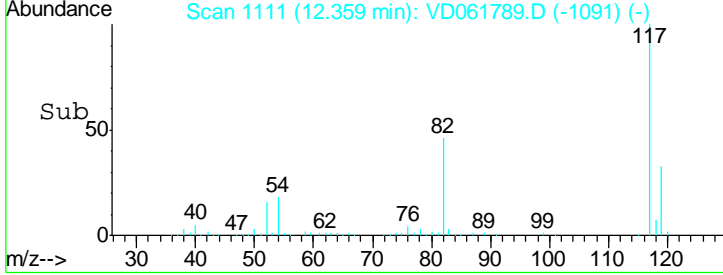
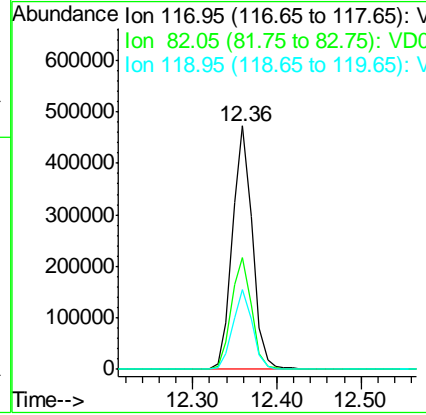
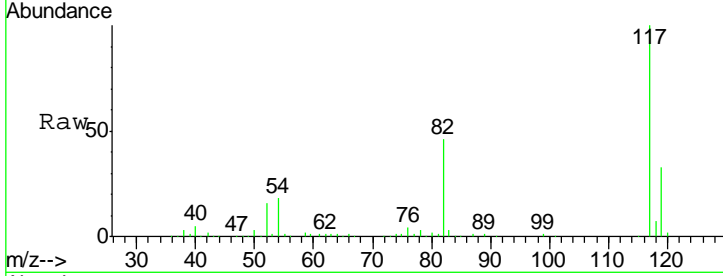




#63
 Chlorobenzene-d5
 Concen: 50.000 ug/l
 RT: 12.36 min Scan# 1111
 Delta R.T. -0.00 min
 Lab File: VD061789.D
 Acq: 12 Apr 2019 20:23

Instrument : MSVOA_D
 ClientSampled : FK-BPM-01-E2-E2A-F2-F2A

Tgt Ion	Resp	Lower	Upper
117	773165		
82	46.2	36.8	55.2
119	33.0	26.1	39.1



#72
 1,4-Dichlorobenzene-d4
 Concen: 50.000 ug/l
 RT: 14.51 min Scan# 1330
 Delta R.T. -0.00 min
 Lab File: VD061789.D
 Acq: 12 Apr 2019 20:23

Tgt Ion	Resp	Lower	Upper
152	356293		
115	53.3	26.4	79.2
150	156.2	0.0	320.6

