

Data Path : Z:\voasrv\HPCHEM1\MSVOA\_D\Data\VD041223\  
 Data File : VD075647.D  
 Acq On : 12 Apr 2023 18:46  
 Operator : KP/SY  
 Sample : 02262-05  
 Misc : 5.62G/5.00ml/MSVOA\_D/SOIL  
 ALS Vial : 17 Sample Multiplier: 1

Instrument :  
 MSVOA\_D  
 ClientSampleId :  
 JPP-1-040723

Integration Parameters: RTEINT.P

Integrator: RTE  
 Smoothing : ON Filtering: 5  
 Sampling : 1 Min Area: 3 % of largest Peak  
 Start Thrs: 0.2 Max Peaks: 100  
 Stop Thrs : 0 Peak Location: TOP

If leading or trailing edge < 100 prefer < Baseline drop else tangent >  
 Peak separation: 5

Method : Z:\voasrv\HPCHEM1\MSVOA\_D\Method\82D041023S.M  
 Title : SW846 8260

Signal : TIC: VD075647.D\data.ms

peak #	R.T. min	first scan	max scan	last scan	PK TY	peak height	corr. area	corr. % max.	% of total
1	1.734	13	25	37	rBV	225283	447300	47.20%	9.248%
2	4.793	536	545	554	rBV2	15106	44136	4.66%	0.912%
3	7.805	1046	1057	1063	rBV2	171248	409083	43.16%	8.458%
4	7.875	1063	1069	1083	rVB	203719	470127	49.60%	9.720%
5	8.228	1121	1129	1141	rVB	136165	294723	31.10%	6.093%
6	8.775	1214	1222	1232	rBV	329622	666094	70.28%	13.771%
7	10.269	1468	1476	1485	rBV	536539	947753	100.00%	19.594%
8	11.581	1692	1699	1711	rVB	403860	677834	71.52%	14.014%
9	12.575	1861	1868	1876	rVB	264945	426254	44.98%	8.813%
10	13.210	1973	1976	1984	rBV3	6328	9817	1.04%	0.203%
11	13.516	2021	2028	2039	rVB	238953	406371	42.88%	8.402%
12	13.722	2054	2063	2066	rBV6	8242	15713	1.66%	0.325%
13	14.057	2115	2120	2125	rVB5	6101	10164	1.07%	0.210%
14	14.769	2234	2241	2248	rBV6	5343	11485	1.21%	0.237%

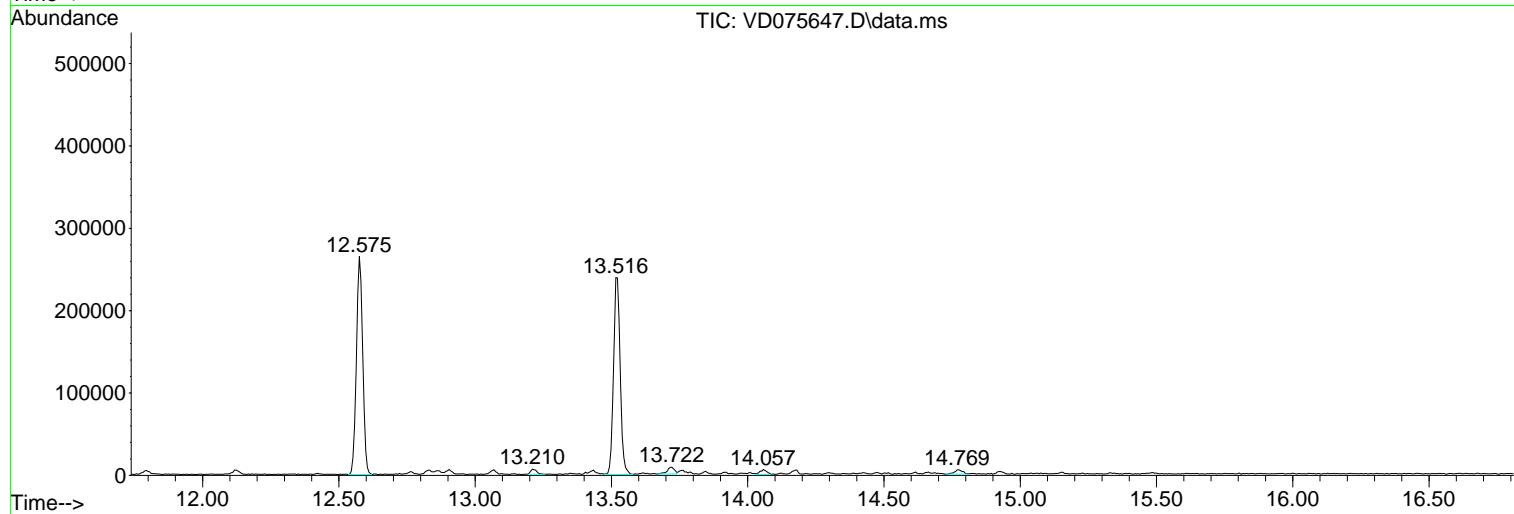
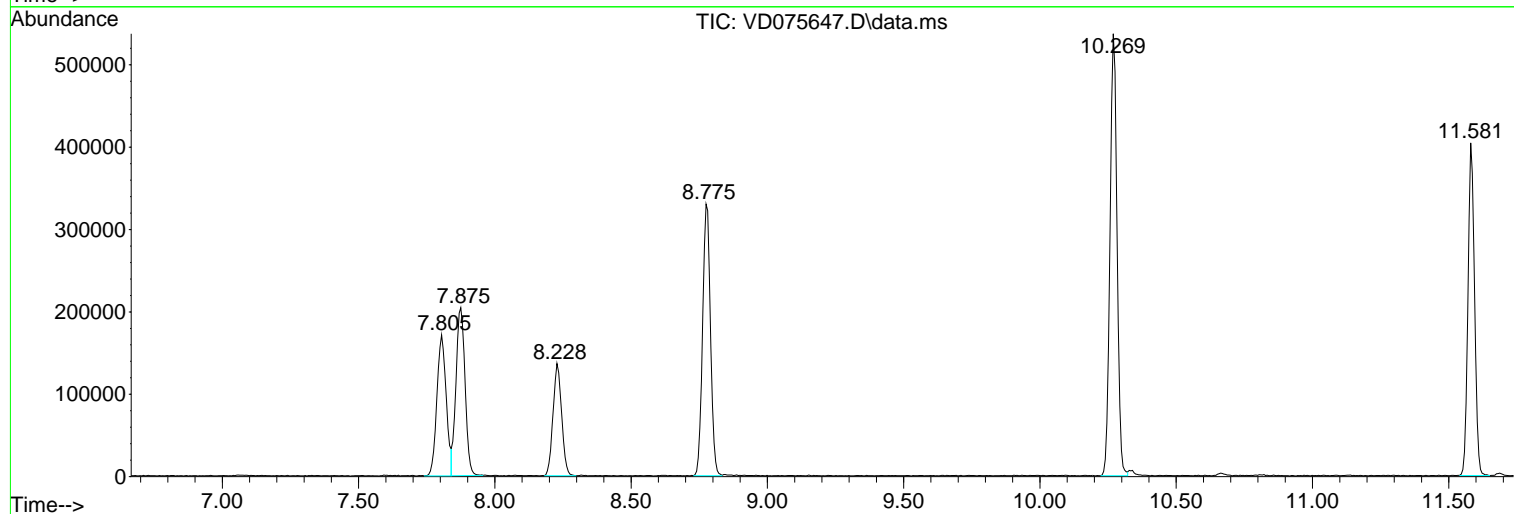
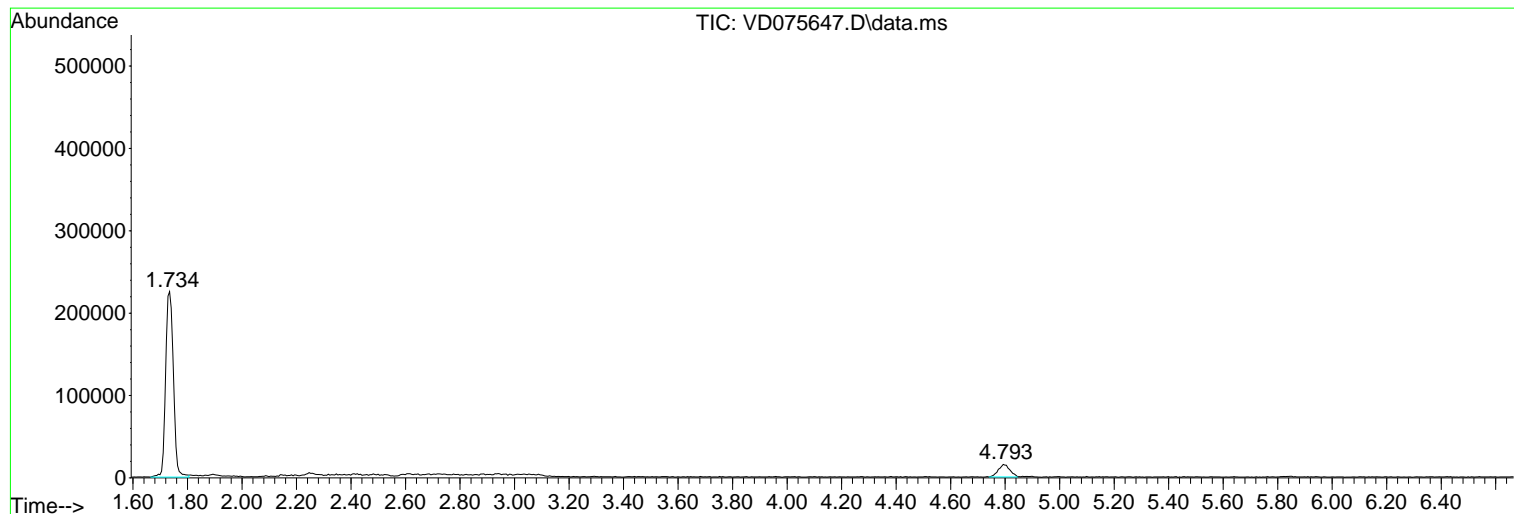
Sum of corrected areas: 4836854

Data Path : Z:\voasrv\HPCHEM1\MSVOA\_D\Data\VD041223\  
Data File : VD075647.D  
Acq On : 12 Apr 2023 18:46  
Operator : KP/SY  
Sample : 02262-05  
Misc : 5.62G/5.00ml/MSVOA\_D/SOIL  
ALS Vial : 17 Sample Multiplier: 1

Instrument :  
MSVOA\_D  
ClientSampleId :  
JPP-1-040723

Quant Method : Z:\voasrv\HPCHEM1\MSVOA\_D\Method\82D041023S.M  
Quant Title : SW846 8260

TIC Library : C:\Database\NIST20.L  
TIC Integration Parameters: LSCINT.P



Library Search Compound Report

Data Path : Z:\voasrv\HPCHEM1\MSVOA\_D\Data\VD041223\  
Data File : VD075647.D  
Acq On : 12 Apr 2023 18:46  
Operator : KP/SY  
Sample : 02262-05  
Misc : 5.62G/5.00ml/MSVOA\_D/SOIL  
ALS Vial : 17 Sample Multiplier: 1

Instrument :  
MSVOA\_D  
ClientSampleId :  
JPP-1-040723

Quant Method : Z:\voasrv\HPCHEM1\MSVOA\_D\Method\82D041023S.M  
Quant Title : SW846 8260

TIC Library : C:\Database\NIST20.L  
TIC Integration Parameters: LSCINT.P

No Library Search Compounds Detected

\*\*\*\*\*

Data Path : Z:\voasrv\HPCHEM1\MSVOA\_D\Data\VD041223\  
Data File : VD075647.D  
Acq On : 12 Apr 2023 18:46  
Operator : KP/SY  
Sample : 02262-05  
Misc : 5.62G/5.00ml/MSVOA\_D/SOIL  
ALS Vial : 17 Sample Multiplier: 1

Instrument :  
MSVOA\_D  
ClientSampleId :  
JPP-1-040723

Quant Method : Z:\voasrv\HPCHEM1\MSVOA\_D\Method\82D041023S.M  
Quant Title : SW846 8260

TIC Library : C:\Database\NIST20.L  
TIC Integration Parameters: LSCINT.P

TIC Top Hit name	RT	EstConc	Units	Response	--Internal Standard--			
					#	RT	Resp	Conc

---