

Data Path : Z:\voasrv\HPCHEM1\MSVOA\_D\Data\VD042123\  
 Data File : VD075776.D  
 Acq On : 21 Apr 2023 15:28  
 Operator : KP/SY  
 Sample : 02447-08  
 Misc : 5.30G/10.00ml/MSVOA\_D/SOIL  
 ALS Vial : 10 Sample Multiplier: 1

Instrument :  
 MSVOA\_D  
 ClientSampleId :  
 EW913

Integration Parameters: LSCINT.P

Integrator: RTE  
 Smoothing : OFF  
 Sampling : 1  
 Start Thrs : 0.2  
 Stop Thrs : 0

Filtering: 5  
 Min Area: 0 % of largest Peak  
 Max Peaks: 100  
 Peak Location: TOP

If leading or trailing edge < 100 prefer < Baseline drop else tangent >  
 Peak separation: 5

Method : Z:\voasrv\HPCHEM1\MSVOA\_D\Method\SFAMDLM042023SMA.M  
 Title : SFAM01.0

Signal : TIC: VD075776.D\data.ms

peak #	R.T. min	first scan	max scan	last scan	PK TY	peak height	corr. area	corr. % max.	% of total
1	1.740	14	26	39	rBV	740452	1379086	100.00%	14.522%
2	2.093	84	86	87	rBV2	688	498	0.04%	0.005%
3	2.275	111	117	129	rVB	229270	340819	24.71%	3.589%
4	2.558	164	165	167	rBV	1634	939	0.07%	0.010%
5	2.805	199	207	216	rBV	177224	332794	24.13%	3.504%
6	3.269	284	286	287	rBV2	604	543	0.04%	0.006%
7	3.381	303	305	309	rVB2	393	399	0.03%	0.004%
8	3.528	329	330	332	rBV2	455	369	0.03%	0.004%
9	3.587	338	340	341	rBV	423	357	0.03%	0.004%
10	3.834	380	382	383	rBV	565	391	0.03%	0.004%
11	3.916	385	396	408	rVV	172010	437995	31.76%	4.612%
12	4.346	467	469	470	rBV	544	397	0.03%	0.004%
13	4.805	535	547	558	rVB	45883	138052	10.01%	1.454%
14	5.063	587	591	593	rVV2	518	736	0.05%	0.008%
15	5.140	602	604	606	rVB2	530	369	0.03%	0.004%
16	5.163	606	608	610	rBV2	385	444	0.03%	0.005%
17	5.210	612	616	617	rBV	682	644	0.05%	0.007%
18	5.281	625	628	631	rBV2	517	544	0.04%	0.006%
19	5.340	637	638	641	rBV2	846	702	0.05%	0.007%
20	5.387	644	646	649	rBV2	639	599	0.04%	0.006%
21	5.428	652	653	656	rBV2	550	539	0.04%	0.006%
22	5.628	685	687	689	rBV2	411	377	0.03%	0.004%
23	5.740	703	706	708	rBV2	540	715	0.05%	0.008%
24	5.763	708	710	711	rVB	853	599	0.04%	0.006%
25	5.787	711	714	715	rBV2	716	727	0.05%	0.008%
26	5.846	717	724	730	rVB3	3461	8559	0.62%	0.090%
27	6.252	791	793	795	rVB	810	478	0.03%	0.005%
28	6.293	798	800	803	rBV2	470	538	0.04%	0.006%
29	6.387	814	816	818	rBV2	340	327	0.02%	0.003%
30	6.452	825	827	829	rBV2	428	339	0.02%	0.004%
31	6.581	846	849	851	rBV2	472	653	0.05%	0.007%
32	6.675	864	865	868	rVB	603	519	0.04%	0.005%
33	6.704	868	870	872	rBV	870	944	0.07%	0.010%
34	6.910	901	905	906	rBV	346	359	0.03%	0.004%
35	6.987	908	918	928	rBV	21423	58659	4.25%	0.618%
36	7.181	949	951	953	rBV	620	457	0.03%	0.005%

Data Path : Z:\voasrv\HPCHEM1\MSVOA\_D\Data\VD042123\  
 Data File : VD075776.D  
 Acq On : 21 Apr 2023 15:28  
 Operator : KP/SY  
 Sample : 02447-08  
 Misc : 5.30G/10.00ml/MSVOA\_D/SOIL  
 ALS Vial : 10 Sample Multiplier: 1

Instrument :  
 MSVOA\_D  
 ClientSampleId :  
 EW913

Integration Parameters: LSCINT.P

Integrator: RTE  
 Smoothing : OFF  
 Sampling : 1  
 Start Thrs : 0.2  
 Stop Thrs : 0

Filtering: 5  
 Min Area: 0 % of largest Peak  
 Max Peaks: 100  
 Peak Location: TOP

If leading or trailing edge < 100 prefer < Baseline drop else tangent >  
 Peak separation: 5

Method : Z:\voasrv\HPCHEM1\MSVOA\_D\Method\SFAMDLM042023SMA.M  
 Title : SFAM01.0

37	7.357	980	981	983	rBV2	869	521	0.04%	0.005%
38	7.428	991	993	995	rBV	418	345	0.03%	0.004%
39	7.446	995	996	997	rVV	649	338	0.02%	0.004%
40	7.481	1001	1002	1004	rBV	668	345	0.03%	0.004%
41	7.569	1007	1017	1033	rVV	215966	546129	39.60%	5.751%
42	7.863	1063	1067	1071	rBV2	818	1260	0.09%	0.013%
43	7.957	1081	1083	1087	rBV2	889	730	0.05%	0.008%
44	8.004	1087	1091	1093	rBV	622	843	0.06%	0.009%
45	8.098	1105	1107	1111	rBV2	654	510	0.04%	0.005%
46	8.204	1115	1125	1143	rVV2	423518	1236469	89.66%	13.020%
47	8.569	1185	1187	1190	rVB2	498	558	0.04%	0.006%
48	8.616	1193	1195	1196	rBV2	864	665	0.05%	0.007%
49	8.651	1199	1201	1203	rBV	811	593	0.04%	0.006%
50	8.669	1203	1204	1207	rBV	434	463	0.03%	0.005%
51	8.775	1213	1222	1235	rBV	404197	824216	59.77%	8.679%
52	8.998	1259	1260	1261	rBV	758	514	0.04%	0.005%
53	9.051	1267	1269	1270	rBV	713	681	0.05%	0.007%
54	9.116	1278	1280	1283	rBV2	423	449	0.03%	0.005%
55	9.210	1287	1296	1308	rBV	276269	560713	40.66%	5.904%
56	9.440	1333	1335	1337	rBV2	442	391	0.03%	0.004%
57	9.528	1347	1350	1352	rBV2	744	837	0.06%	0.009%
58	9.551	1352	1354	1356	rVV2	669	600	0.04%	0.006%
59	9.593	1359	1361	1362	rVB	811	448	0.03%	0.005%
60	9.740	1383	1386	1389	rBV2	405	493	0.04%	0.005%
61	9.981	1419	1427	1440	rBV	140195	253246	18.36%	2.667%
62	10.063	1440	1441	1444	rBV2	815	787	0.06%	0.008%
63	10.269	1468	1476	1486	rBV	554850	987493	71.60%	10.398%
64	10.487	1510	1513	1514	rBV	471	423	0.03%	0.004%
65	10.528	1514	1520	1528	rVB	87338	150457	10.91%	1.584%
66	10.657	1538	1542	1543	rBV2	2777	3248	0.24%	0.034%
67	10.810	1565	1568	1572	rVB4	2504	3749	0.27%	0.039%
68	10.881	1574	1580	1592	rVV	78630	135780	9.85%	1.430%
69	11.145	1623	1625	1626	rBV	713	394	0.03%	0.004%
70	11.363	1657	1662	1666	rVB3	1405	2569	0.19%	0.027%
71	11.398	1666	1668	1670	rVB	422	343	0.02%	0.004%
72	11.492	1682	1684	1685	rVB	500	322	0.02%	0.003%
73	11.510	1685	1687	1689	rVB2	499	449	0.03%	0.005%
74	11.581	1691	1699	1712	rVB	501991	881958	63.95%	9.287%
75	11.792	1731	1735	1740	rVB4	1295	2050	0.15%	0.022%
76	11.828	1740	1741	1744	rBV2	562	377	0.03%	0.004%

Data Path : Z:\voasrv\HPCHEM1\MSVOA\_D\Data\VD042123\  
 Data File : VD075776.D  
 Acq On : 21 Apr 2023 15:28  
 Operator : KP/SY  
 Sample : 02447-08  
 Misc : 5.30G/10.00ml/MSVOA\_D/SOIL  
 ALS Vial : 10 Sample Multiplier: 1

Instrument :  
 MSVOA\_D  
 ClientSampleId :  
 EW913

Integration Parameters: LSCINT.P

Integrator: RTE  
 Smoothing : OFF                   Filtering: 5  
 Sampling : 1                        Min Area: 0 % of largest Peak  
 Start Thrs: 0.2                    Max Peaks: 100  
 Stop Thrs : 0                      Peak Location: TOP

If leading or trailing edge < 100 prefer < Baseline drop else tangent >  
 Peak separation: 5

Method : Z:\voasrv\HPCHEM1\MSVOA\_D\Method\SFAMDLM042023SMA.M  
 Title : SFAM01.0

77	11.945	1759	1761	1763	rVB	685	416	0.03%	0.004%
78	12.116	1787	1790	1791	rBV	1620	1177	0.09%	0.012%
79	12.192	1802	1803	1805	rVB	685	366	0.03%	0.004%
80	12.375	1832	1834	1837	rBV2	599	783	0.06%	0.008%
81	12.428	1839	1843	1848	rVV5	3728	6211	0.45%	0.065%
82	12.581	1863	1869	1874	rBV2	5948	9559	0.69%	0.101%
83	12.651	1874	1881	1888	rVV	160925	270293	19.60%	2.846%
84	12.892	1920	1922	1925	rBV	882	947	0.07%	0.010%
85	13.163	1962	1968	1971	rBV2	1077	1521	0.11%	0.016%
86	13.234	1979	1980	1982	rBV	966	507	0.04%	0.005%
87	13.263	1983	1985	1986	rVV	611	313	0.02%	0.003%
88	13.298	1989	1991	1992	rBV2	746	466	0.03%	0.005%
89	13.375	2002	2004	2007	rVB	1022	838	0.06%	0.009%
90	13.410	2007	2010	2011	rBV2	758	725	0.05%	0.008%
91	13.434	2011	2014	2017	rBV2	1528	1777	0.13%	0.019%
92	13.469	2017	2020	2021	rBV2	931	645	0.05%	0.007%
93	13.522	2022	2029	2036	rBV	321861	521314	37.80%	5.490%
94	13.598	2041	2042	2043	rBV	863	519	0.04%	0.005%
95	13.816	2072	2079	2088	rVB	211935	343897	24.94%	3.621%
96	14.051	2114	2119	2123	rVB	6129	9318	0.68%	0.098%
97	14.181	2139	2141	2142	rBV	563	370	0.03%	0.004%
98	15.328	2332	2336	2345	rVB3	5173	8948	0.65%	0.094%
99	16.563	2545	2546	2549	rBV2	1107	744	0.05%	0.008%
100	16.598	2550	2552	2553	rBV	1313	653	0.05%	0.007%

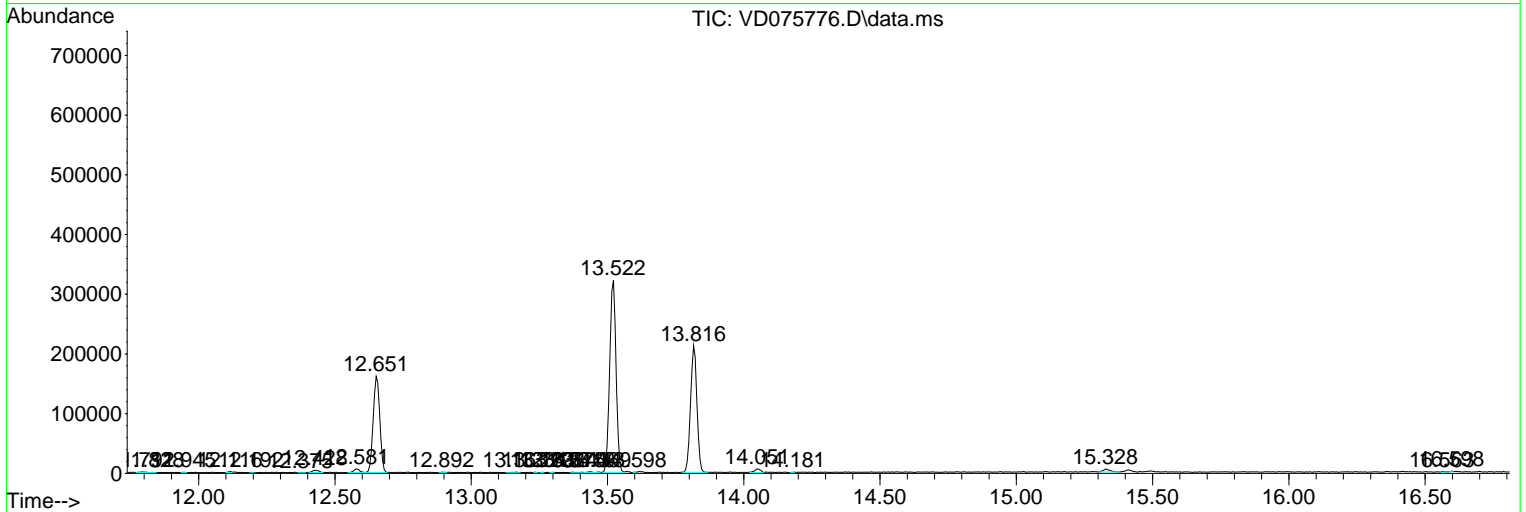
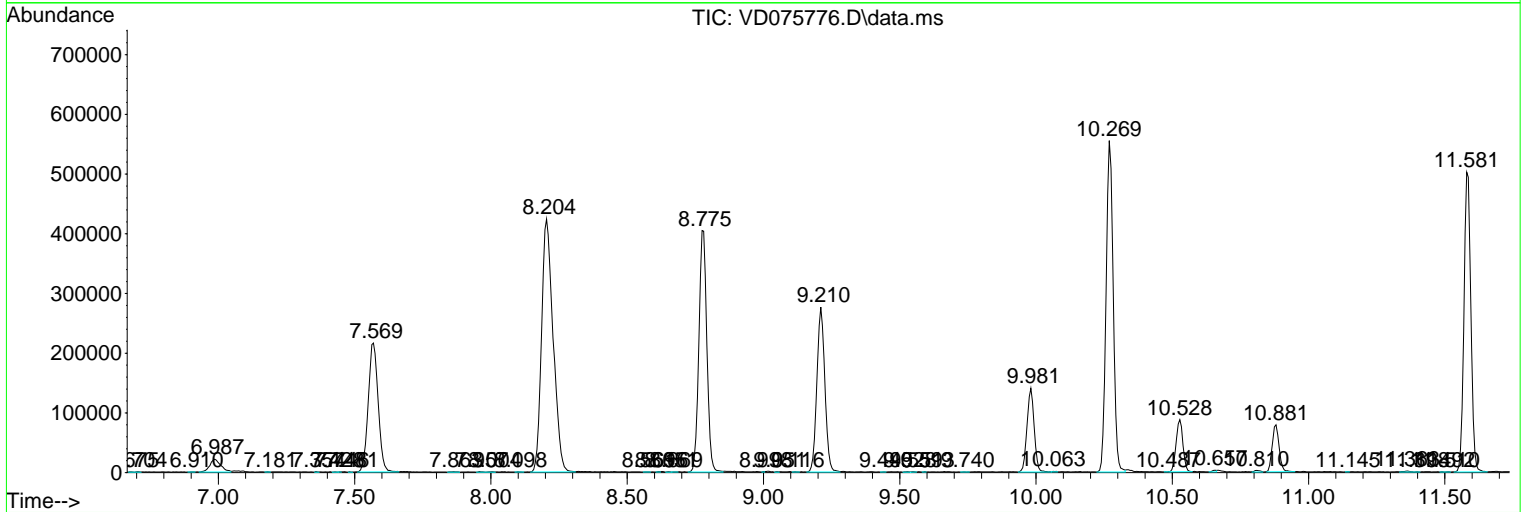
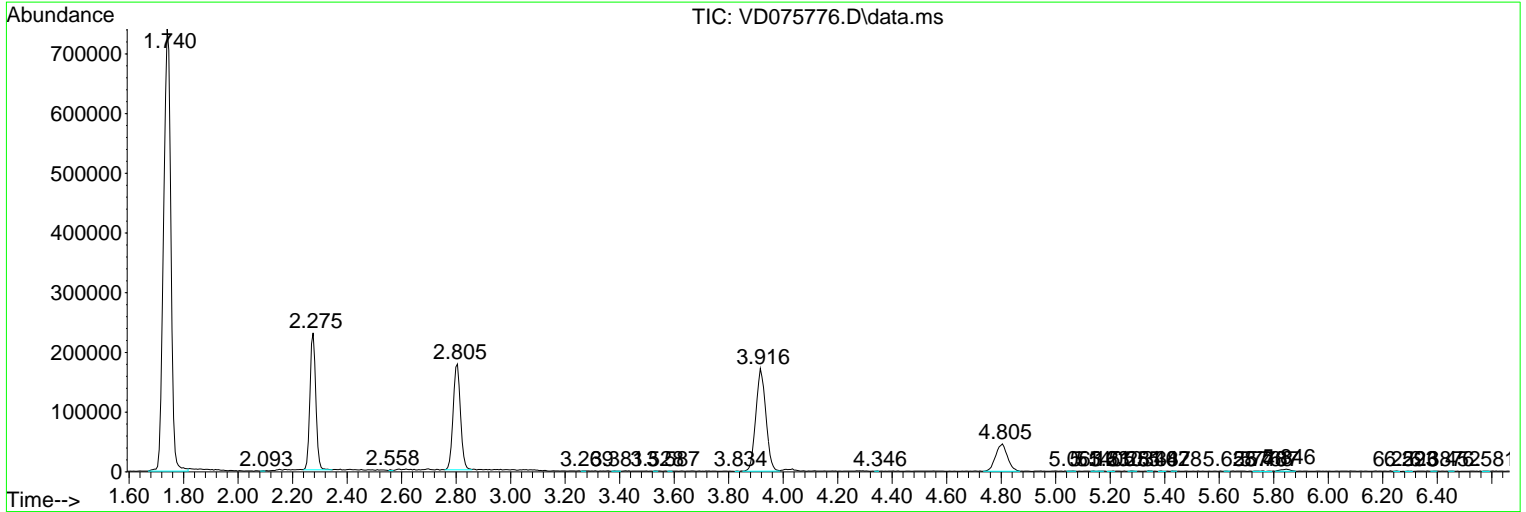
Sum of corrected areas: 9496529

Data Path : Z:\voasrv\HPCHEM1\MSVOA\_D\Data\VD042123\  
 Data File : VD075776.D  
 Acq On : 21 Apr 2023 15:28  
 Operator : KP/SY  
 Sample : 02447-08  
 Misc : 5.30G/10.00ml/MSVOA\_D/SOIL  
 ALS Vial : 10 Sample Multiplier: 1

Instrument :  
 MSVOA\_D  
 ClientSampleId :  
 EW913

Quant Method : Z:\voasrv\HPCHEM1\MSVOA\_D\Method\SFAMDLM042023SMA.M  
 Quant Title : SFAM01.0

TIC Library :  
 TIC Integration Parameters: LSCINT.P



Library Search Compound Report

Data Path : Z:\voasrv\HPCHEM1\MSVOA\_D\Data\VD042123\  
Data File : VD075776.D  
Acq On : 21 Apr 2023 15:28  
Operator : KP/SY  
Sample : 02447-08  
Misc : 5.30G/10.00ml/MSVOA\_D/SOIL  
ALS Vial : 10 Sample Multiplier: 1

Instrument :  
MSVOA\_D  
ClientSampleId :  
EW913

Quant Method : Z:\voasrv\HPCHEM1\MSVOA\_D\Method\SFAMDLM042023SMA.M  
Quant Title : SFAM01.0

TIC Library :  
TIC Integration Parameters: LSCINT.P

No Library Search Compounds Detected

\*\*\*\*\*

Data Path : Z:\voasrv\HPCHEM1\MSVOA\_D\Data\VD042123\  
Data File : VD075776.D  
Acq On : 21 Apr 2023 15:28  
Operator : KP/SY  
Sample : 02447-08  
Misc : 5.30G/10.00ml/MSVOA\_D/SOIL  
ALS Vial : 10 Sample Multiplier: 1

Instrument :  
MSVOA\_D  
ClientSampleId :  
EW913

Quant Method : Z:\voasrv\HPCHEM1\MSVOA\_D\Method\SFAMDLM042023SMA.M  
Quant Title : SFAM01.0

TIC Library :  
TIC Integration Parameters: LSCINT.P

TIC Top Hit name	RT	EstConc	Units	Response	--Internal Standard--		
					#	RT	Resp Conc

---