

Data Path : Z:\voasrv\HPCHEM1\MSVOA_D\Data\VD042822\
 Data File : VD072724.D
 Acq On : 28 Apr 2022 14:55
 Operator : VA/SY
 Sample : N2602-02
 Misc : 5.07G/5.00ml/MSVOA_D/SOIL
 ALS Vial : 8 Sample Multiplier: 1

Instrument :
 MSVOA_D
 ClientSampleId :
 12-15-SB5-BK-PRISON

Integration Parameters: RTEINT.P

Integrator: RTE
 Smoothing : ON
 Sampling : 1
 Start Thrs : 0.2
 Stop Thrs : 0

Filtering: 5
 Min Area: 3 % of largest Peak
 Max Peaks: 100
 Peak Location: TOP

If leading or trailing edge < 100 prefer < Baseline drop else tangent >
 Peak separation: 5

Method : Z:\voasrv\HPCHEM1\MSVOA_D\Method\82D042722S.M
 Title : SW846 8260

Signal : TIC: VD072724.D\data.ms

peak #	R.T. min	first scan	max scan	last scan	PK TY	peak height	corr. area	corr. % max.	% of total
1	2.209	46	49	50	rBV2	2166	1621	2.14%	0.271%
2	2.391	77	80	81	rBV	1752	1472	1.94%	0.246%
3	2.409	81	83	85	rBV2	1694	1525	2.01%	0.255%
4	2.791	141	148	154	rBV4	2724	6276	8.27%	1.050%
5	3.109	200	202	205	rBV2	1504	1677	2.21%	0.281%
6	3.703	298	303	307	rBV2	2059	3273	4.31%	0.548%
7	3.826	320	324	325	rBV2	1252	1455	1.92%	0.243%
8	4.079	366	367	370	rBV2	1379	1395	1.84%	0.233%
9	4.114	370	373	374	rVV2	1482	1515	2.00%	0.253%
10	4.156	377	380	383	rBV2	1721	2268	2.99%	0.379%
11	4.420	424	425	429	rBV	1898	1677	2.21%	0.281%
12	5.203	553	558	561	rBV2	1094	1767	2.33%	0.296%
13	5.297	571	574	577	rVB	1791	1974	2.60%	0.330%
14	5.355	583	584	587	rBV2	1199	1391	1.83%	0.233%
15	5.532	611	614	615	rVB2	1673	1608	2.12%	0.269%
16	5.561	615	619	620	rBV	2447	2340	3.08%	0.392%
17	5.673	635	638	641	rBV	1365	2009	2.65%	0.336%
18	5.773	652	655	660	rVV	1325	1526	2.01%	0.255%
19	6.361	753	755	760	rBV2	1529	1877	2.47%	0.314%
20	6.973	855	859	863	rVB2	1292	2024	2.67%	0.339%
21	7.150	886	889	890	rBV3	2048	1674	2.21%	0.280%
22	7.167	890	892	893	rVV	2295	2300	3.03%	0.385%
23	7.185	893	895	897	rVB	3148	2286	3.01%	0.382%
24	7.402	928	932	935	rBV2	1101	1497	1.97%	0.250%
25	7.620	967	969	971	rVB2	1972	1520	2.00%	0.254%
26	7.649	971	974	975	rBV	1778	1551	2.04%	0.260%
27	7.826	1002	1004	1007	rVB	1839	1456	1.92%	0.244%
28	7.908	1007	1018	1023	rBV4	14945	38174	50.31%	6.387%
29	7.973	1024	1029	1037	rVB5	18193	38463	50.69%	6.435%
30	8.061	1043	1044	1047	rBV	1727	2071	2.73%	0.347%
31	8.326	1080	1089	1097	rBV2	17830	42188	55.60%	7.059%
32	8.467	1111	1113	1117	rVB2	1532	1924	2.54%	0.322%
33	8.591	1132	1134	1137	rVB	1895	1974	2.60%	0.330%
34	8.620	1137	1139	1142	rBV2	1764	2093	2.76%	0.350%
35	8.655	1142	1145	1147	rVV2	1391	1430	1.88%	0.239%
36	8.679	1147	1149	1153	rVV	1268	1875	2.47%	0.314%

Data Path : Z:\voasrv\HPCHEM1\MSVOA_D\Data\VD042822\
 Data File : VD072724.D
 Acq On : 28 Apr 2022 14:55
 Operator : VA/SY
 Sample : N2602-02
 Misc : 5.07G/5.00ml/MSVOA_D/SOIL
 ALS Vial : 8 Sample Multiplier: 1

Instrument :
 MSVOA_D
 ClientSampleId :
 12-15-SB5-BK-PRISON

Integration Parameters: RTEINT.P

Integrator: RTE
 Smoothing : ON
 Sampling : 1
 Start Thrs : 0.2
 Stop Thrs : 0

Filtering: 5
 Min Area: 3 % of largest Peak
 Max Peaks: 100
 Peak Location: TOP

If leading or trailing edge < 100 prefer < Baseline drop else tangent >
 Peak separation: 5

Method : Z:\voasrv\HPCHEM1\MSVOA_D\Method\82D042722S.M
 Title : SW846 8260

37	8.855	1172	1179	1187	rBV2	25901	55085	72.60%	9.216%
38	9.044	1207	1211	1214	rVB2	1513	1849	2.44%	0.309%
39	9.079	1214	1217	1219	rBV2	1445	1872	2.47%	0.313%
40	9.167	1229	1232	1236	rVV2	1459	1868	2.46%	0.313%
41	9.208	1236	1239	1242	rVB2	1697	1939	2.56%	0.324%
42	9.232	1242	1243	1247	rVB	2157	1746	2.30%	0.292%
43	9.267	1247	1249	1253	rBV2	1285	2206	2.91%	0.369%
44	9.938	1361	1363	1365	rBV2	1371	1730	2.28%	0.289%
45	10.202	1405	1408	1409	rVV2	1605	1462	1.93%	0.245%
46	10.273	1415	1420	1422	rVV2	1171	2018	2.66%	0.338%
47	10.332	1422	1430	1438	rVV2	40509	75873	100.00%	12.694%
48	10.396	1438	1441	1444	rVV2	1625	2888	3.81%	0.483%
49	10.532	1462	1464	1466	rBV	1770	1474	1.94%	0.247%
50	10.602	1471	1476	1478	rVV3	1127	1728	2.28%	0.289%
51	10.667	1483	1487	1490	rVB2	1634	2595	3.42%	0.434%
52	10.826	1510	1514	1518	rVB2	1436	2022	2.66%	0.338%
53	10.861	1518	1520	1522	rBV3	1426	1470	1.94%	0.246%
54	10.902	1525	1527	1532	rVB2	951	1489	1.96%	0.249%
55	11.079	1553	1557	1558	rBV3	2081	1893	2.49%	0.317%
56	11.538	1632	1635	1639	rVB2	1908	1894	2.50%	0.317%
57	11.632	1645	1651	1658	rBV2	38681	69019	90.97%	11.548%
58	11.738	1666	1669	1672	rBV	1441	1430	1.88%	0.239%
59	11.908	1696	1698	1701	rVB2	1936	1713	2.26%	0.287%
60	11.938	1701	1703	1706	rBV2	1462	1549	2.04%	0.259%
61	11.961	1706	1707	1711	rVB2	1190	1384	1.82%	0.232%
62	11.996	1711	1713	1716	rBV2	1402	1651	2.18%	0.276%
63	12.085	1725	1728	1730	rVB2	1325	1558	2.05%	0.261%
64	12.137	1734	1737	1740	rBV2	1294	1726	2.27%	0.289%
65	12.232	1750	1753	1756	rBV2	1163	1685	2.22%	0.282%
66	12.261	1756	1758	1762	rVB2	1303	1398	1.84%	0.234%
67	12.361	1772	1775	1778	rBV2	937	1510	1.99%	0.253%
68	12.620	1812	1819	1827	rBV2	28490	46129	60.80%	7.718%
69	12.737	1836	1839	1840	rBV2	2635	1670	2.20%	0.279%
70	12.949	1872	1875	1877	rBV2	1453	2005	2.64%	0.335%
71	13.208	1916	1919	1922	rBV3	1669	2162	2.85%	0.362%
72	13.261	1925	1928	1930	rVV2	1437	1736	2.29%	0.290%
73	13.308	1933	1936	1937	rVV2	1223	1381	1.82%	0.231%
74	13.326	1937	1939	1942	rVB	1845	1579	2.08%	0.264%
75	13.561	1974	1979	1986	rVB3	38565	60774	80.10%	10.168%
76	13.708	2003	2004	2006	rBV2	1598	1411	1.86%	0.236%

Data Path : Z:\voasrv\HPCHEM1\MSVOA_D\Data\VD042822\
 Data File : VD072724.D
 Acq On : 28 Apr 2022 14:55
 Operator : VA/SY
 Sample : N2602-02
 Misc : 5.07G/5.00ml/MSVOA_D/SOIL
 ALS Vial : 8 Sample Multiplier: 1

Instrument :
 MSVOA_D
 ClientSampleId :
 12-15-SB5-BK-PRISON

Integration Parameters: RTEINT.P

Integrator: RTE
 Smoothing : ON Filtering: 5
 Sampling : 1 Min Area: 3 % of largest Peak
 Start Thrs: 0.2 Max Peaks: 100
 Stop Thrs : 0 Peak Location: TOP

If leading or trailing edge < 100 prefer < Baseline drop else tangent >
 Peak separation: 5

Method : Z:\voasrv\HPCHEM1\MSVOA_D\Method\82D042722S.M
 Title : SW846 8260

77	13.796	2016	2019	2021	rBV2	1688	1785	2.35%	0.299%
78	14.373	2114	2117	2118	rBV3	1369	1604	2.11%	0.268%
79	14.443	2125	2129	2130	rBV2	1832	2022	2.66%	0.338%
80	14.484	2134	2136	2140	rVB2	1959	1976	2.60%	0.331%
81	14.526	2140	2143	2144	rBV2	1832	1685	2.22%	0.282%
82	14.655	2160	2165	2169	rBV3	2108	4644	6.12%	0.777%
83	14.737	2177	2179	2181	rVV2	2109	1749	2.31%	0.293%
84	14.779	2185	2186	2188	rVV	2428	1554	2.05%	0.260%
85	14.814	2190	2192	2194	rVV2	1835	1518	2.00%	0.254%
86	14.855	2197	2199	2202	rVV4	1837	2084	2.75%	0.349%
87	14.926	2210	2211	2214	rVV2	1746	1697	2.24%	0.284%
88	14.967	2214	2218	2221	rVV3	1861	3307	4.36%	0.553%
89	14.996	2221	2223	2225	rVV	2056	1646	2.17%	0.275%
90	15.108	2241	2242	2245	rVV2	1984	1618	2.13%	0.271%
91	15.208	2256	2259	2260	rBV2	2066	1751	2.31%	0.293%
92	15.420	2294	2295	2298	rBV2	2164	2295	3.02%	0.384%
93	15.531	2313	2314	2317	rBV2	1977	2054	2.71%	0.344%
94	15.584	2321	2323	2324	rBV2	1859	1414	1.86%	0.237%
95	15.808	2359	2361	2366	rBV3	1354	1860	2.45%	0.311%
96	16.284	2441	2442	2446	rBV3	1905	1715	2.26%	0.287%
97	16.414	2462	2464	2466	rBV3	1744	1723	2.27%	0.288%
98	16.531	2482	2484	2486	rVB2	2141	1451	1.91%	0.243%
99	16.573	2489	2491	2493	rVB2	1798	1381	1.82%	0.231%
100	16.778	2524	2526	2527	rVB	2577	1437	1.89%	0.240%

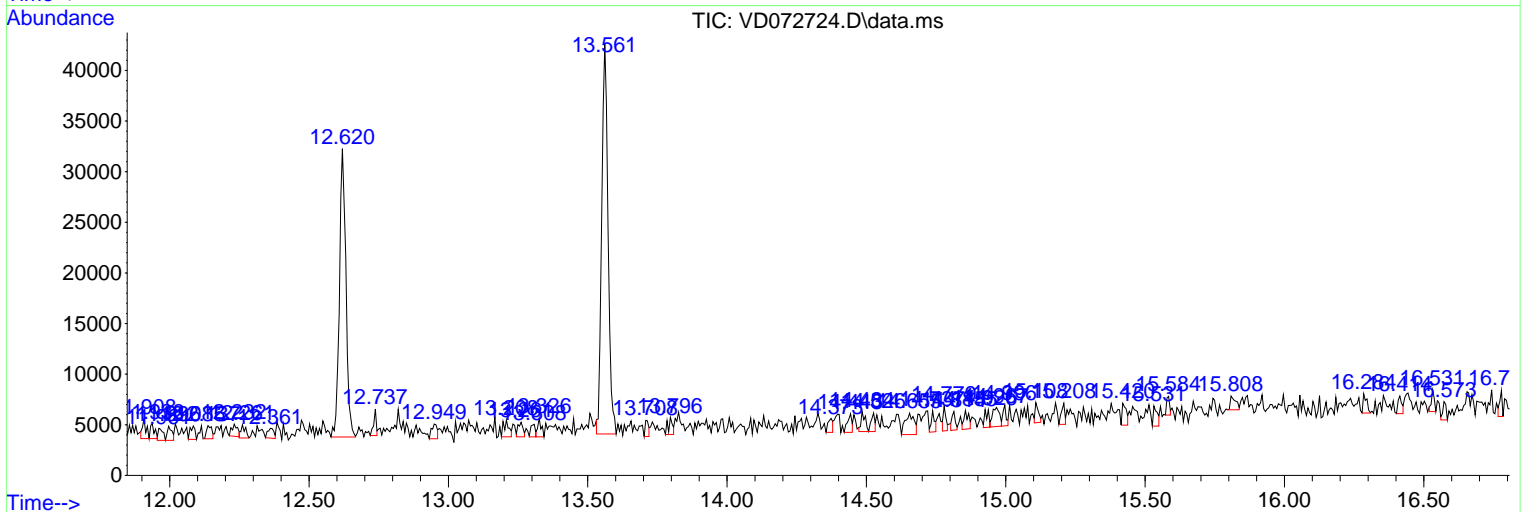
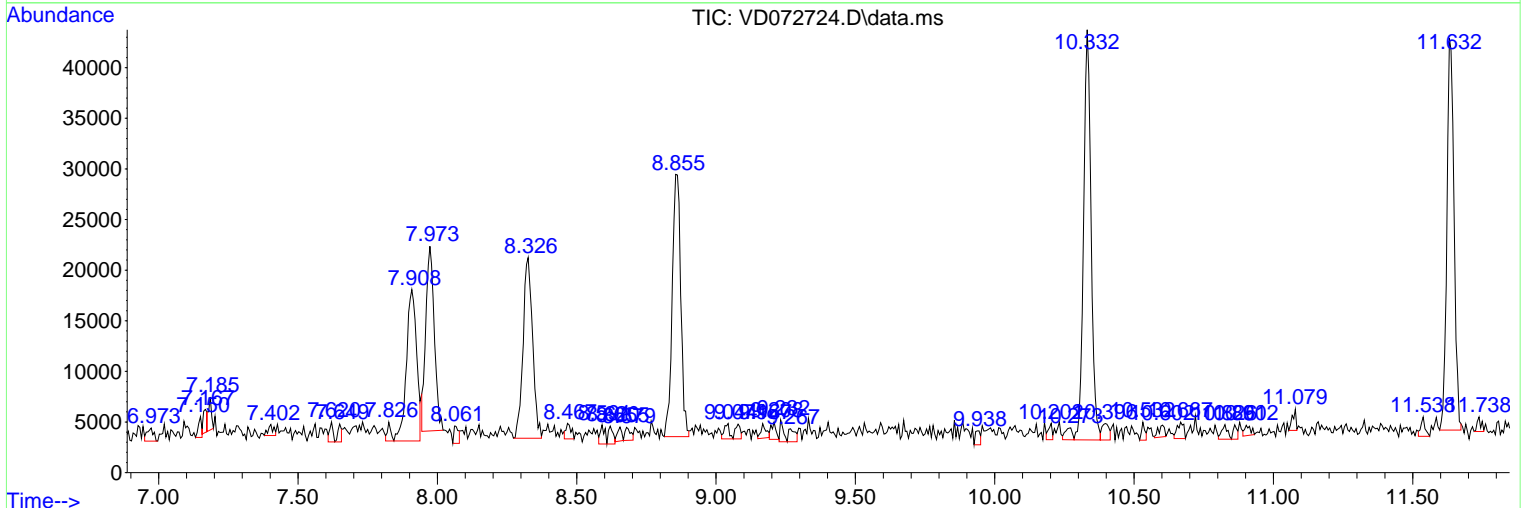
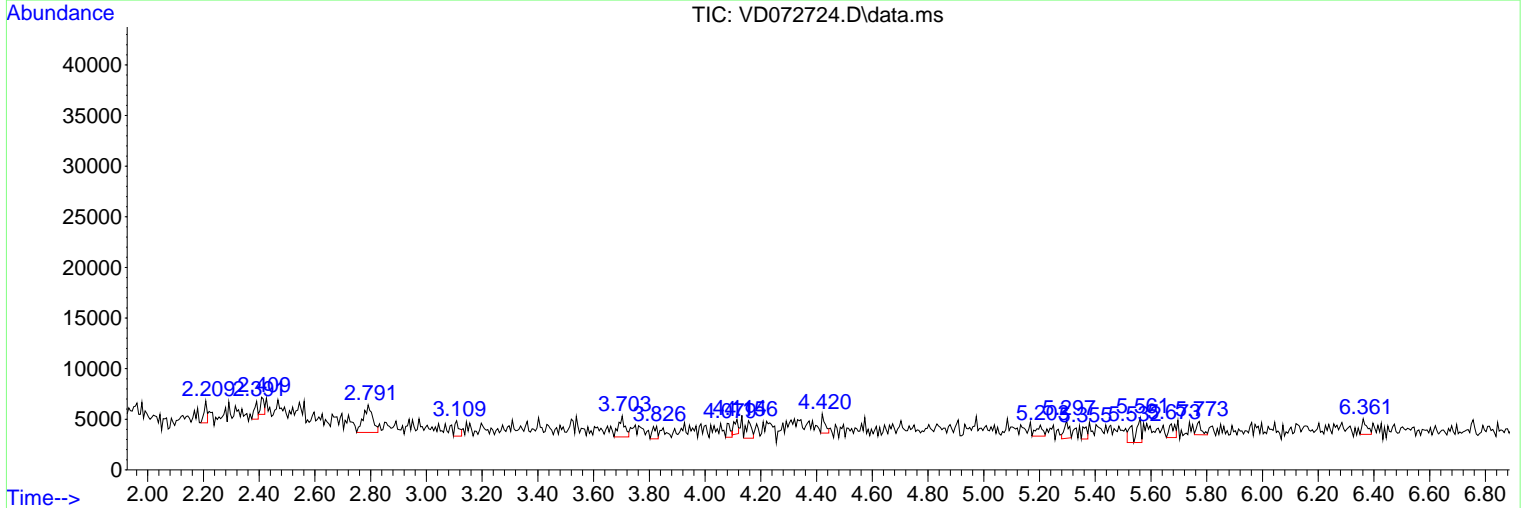
Sum of corrected areas: 597687

Data Path : Z:\voasrv\HPCHEM1\MSVOA_D\Data\VD042822\
 Data File : VD072724.D
 Acq On : 28 Apr 2022 14:55
 Operator : VA/SY
 Sample : N2602-02
 Misc : 5.07G/5.00ml/MSVOA_D/SOIL
 ALS Vial : 8 Sample Multiplier: 1

Instrument :
 MSVOA_D
ClientSampleId :
 12-15-SB5-BK-PRISON

Quant Method : Z:\voasrv\HPCHEM1\MSVOA_D\Method\82D042722S.M
 Quant Title : SW846 8260

TIC Library : C:\Database\NIST20.L
 TIC Integration Parameters: LSCINT.P



Data Path : Z:\voasrv\HPCHEM1\MSVOA_D\Data\VD042822\
 Data File : VD072724.D
 Acq On : 28 Apr 2022 14:55
 Operator : VA/SY
 Sample : N2602-02
 Misc : 5.07G/5.00ml/MSVOA_D/SOIL
 ALS Vial : 8 Sample Multiplier: 1

Instrument :
 MSVOA_D
 ClientSampleId :
 12-15-SB5-BK-PRISON

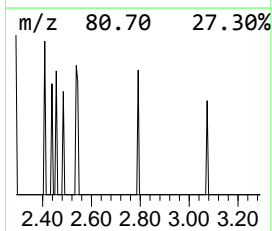
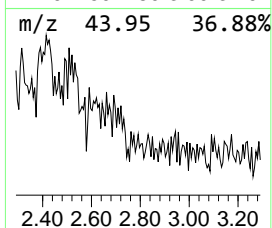
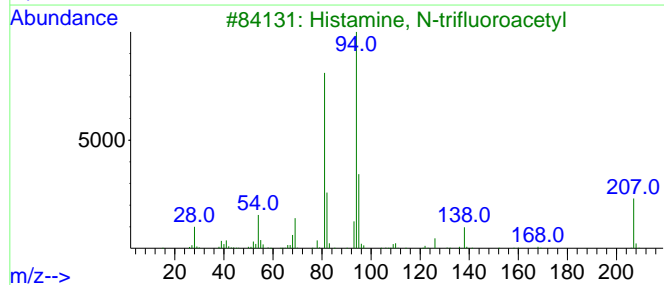
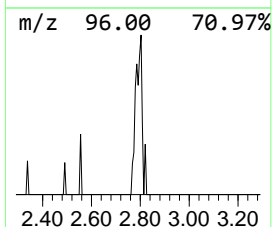
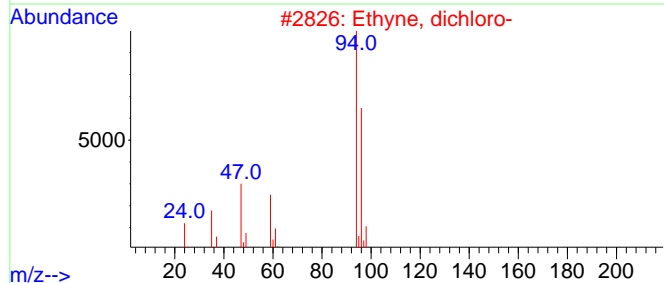
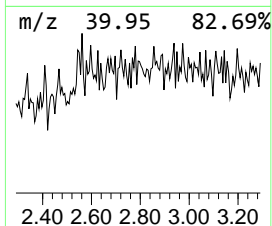
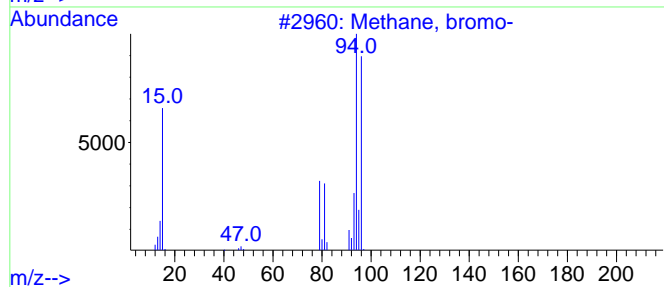
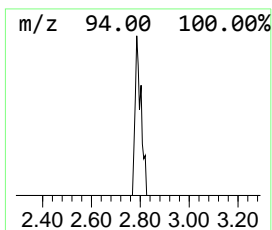
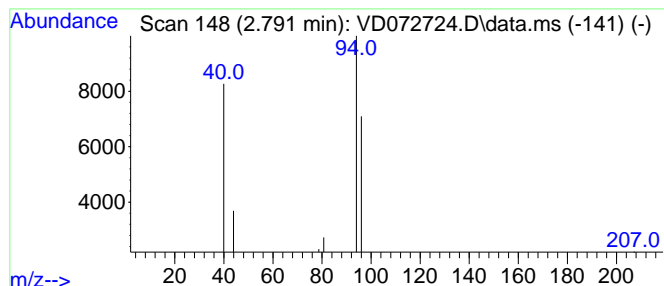
Quant Method : Z:\voasrv\HPCHEM1\MSVOA_D\Method\82D042722S.M
 Quant Title : SW846 8260

TIC Library : C:\Database\NIST20.L
 TIC Integration Parameters: LSCINT.P

 Peak Number 1 Methane, bromo- Concentration Rank 1

R.T.	EstConc	Area	Relative to ISTD	R.T.
2.791	8.16 ug/l	6276	Pentafluorobenzene	7.973

Hit#	of	5	Tentative ID	MW	MolForm	CAS#	Qual
1			Methane, bromo-	94	CH3Br	000074-83-9	80
2			Ethyne, dichloro-	94	C2Cl2	007572-29-4	5
3			Histamine, N-trifluoroacetyl	207	C7H8F3N3O	050580-77-3	5
4			Methylselenol	96	CH4Se	006486-05-1	4
5			2-Cyclopenten-1-one, 3-methyl-	96	C6H8O	002758-18-1	4



Data Path : Z:\voasrv\HPCHEM1\MSVOA_D\Data\VD042822\
Data File : VD072724.D
Acq On : 28 Apr 2022 14:55
Operator : VA/SY
Sample : N2602-02
Misc : 5.07G/5.00ml/MSVOA_D/SOIL
ALS Vial : 8 Sample Multiplier: 1

Instrument :
MSVOA_D
ClientSampleId :
12-15-SB5-BK-PRISON

Quant Method : Z:\voasrv\HPCHEM1\MSVOA_D\Method\82D042722S.M
Quant Title : SW846 8260

TIC Library : C:\Database\NIST0.L
TIC Integration Parameters: LSCINT.P

TIC Top Hit name	RT	EstConc	Units	Response	--Internal Standard--			
					#	RT	Resp	Conc
Methane, bromo-	2.791	8.2	ug/l	6276	1	7.973	38463	50.0