

Data Path : Z:\voasrv\HPCHEM1\MSVOA_D\Data\VD050522\
 Data File : VD072815.D
 Acq On : 05 May 2022 17:39
 Operator : VA/SY
 Sample : N2672-08
 Misc : 6.90G/5.00ml/MSVOA_D/SOIL
 ALS Vial : 17 Sample Multiplier: 1

Instrument :
 MSVOA_D
 ClientSampleId :
 08

Quant Time: May 06 03:51:01 2022
 Quant Method : Z:\voasrv\HPCHEM1\MSVOA_D\Method\82D050222S.M
 Quant Title : SW846 8260
 QLast Update : Tue May 03 08:33:49 2022
 Response via : Initial Calibration

Compound	R.T.	QIon	Response	Conc	Units	Dev(Min)

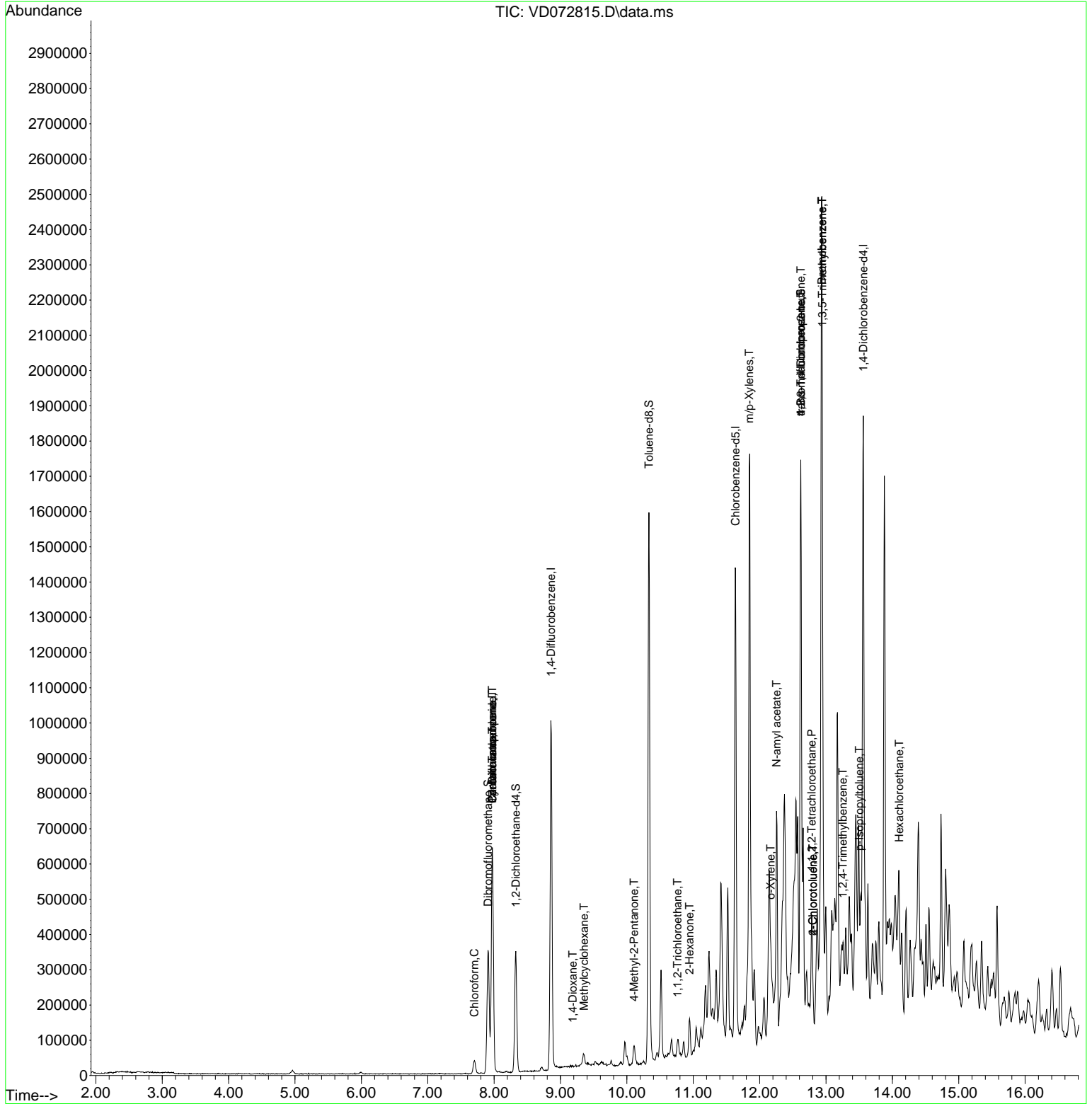
Internal Standards						
1) Pentafluorobenzene	7.973	168	444757	50.000	ug/l	0.00
34) 1,4-Difluorobenzene	8.856	114	808289	50.000	ug/l	0.00
63) Chlorobenzene-d5	11.638	117	774127	50.000	ug/l	0.00
72) 1,4-Dichlorobenzene-d4	13.561	152	349592	50.000	ug/l	0.00
System Monitoring Compounds						
33) 1,2-Dichloroethane-d4	8.326	65	271417	47.013	ug/l	0.00
Spiked Amount	50.000	Range	50 - 163	Recovery	=	94.020%
35) Dibromofluoromethane	7.909	113	254873	44.898	ug/l	0.00
Spiked Amount	50.000	Range	54 - 147	Recovery	=	89.800%
50) Toluene-d8	10.332	98	994817	48.854	ug/l	0.00
Spiked Amount	50.000	Range	49 - 140	Recovery	=	97.700%
62) 4-Bromofluorobenzene	12.620	95	384856	50.687	ug/l	0.00
Spiked Amount	50.000	Range	25 - 144	Recovery	=	101.380%
Target Compounds						
						Qvalue
5) Bromomethane	2.785	94	1214	Below Cal	#	52
13) Acrolein	4.073	56	60	Below Cal	#	78
16) Acetone	4.156	43	1291	Below Cal	#	47
18) Methyl Acetate	4.768	43	60	Below Cal	#	55
20) Methylene Chloride	4.956	84	6320	Below Cal	#	78
30) Chloroform	7.703	83	31156	2.573	ug/l	94
31) Cyclohexane	7.973	56	11522	1.142	ug/l #	22
36) 1,1-Dichloropropene	7.973	75	41297	4.474	ug/l #	53
38) Carbon Tetrachloride	7.973	117	49508	5.167	ug/l #	18
39) Methylcyclohexane	9.355	83	12039	1.124	ug/l #	85
49) 1,4-Dioxane	9.185	88	59	1.357	ug/l #	21
51) 4-Methyl-2-Pentanone	10.108	43	23028	5.658	ug/l #	45
55) 1,1,2-Trichloroethane	10.761	97	20614	3.949	ug/l #	16
59) 2-Hexanone	10.944	43	43045	15.719	ug/l #	31
68) m/p-Xylenes	11.844	106	16343	1.369	ug/l	87
69) o-Xylene	12.167	106	22199	1.991	ug/l	86
74) N-amyl acetate	12.255	43	141599	20.905	ug/l #	72
75) 1,1,2,2-Tetrachloroethane	12.785	83	19859	3.617	ug/l #	27
76) 1,2,3-Trichloropropane	12.620	75	211347	54.217	ug/l #	100
77) Bromobenzene	12.938	156	62810	9.725	ug/l #	1
79) 2-Chlorotoluene	12.802	91	28675	1.432	ug/l	76
80) 1,3,5-Trimethylbenzene	12.944	105	95311	4.133	ug/l	96
81) trans-1,4-Dichloro-2-b...	12.620	75	211347	124.677	ug/l #	8
82) 4-Chlorotoluene	12.802	91	28428	1.359	ug/l	75
84) 1,2,4-Trimethylbenzene	13.255	105	91095	3.952	ug/l	99
86) p-Isopropyltoluene	13.502	119	31029	1.280	ug/l	91
90) Hexachloroethane	14.102	117	9930	1.999	ug/l #	17

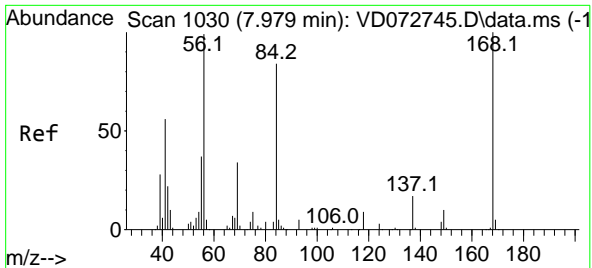
(#) = qualifier out of range (m) = manual integration (+) = signals summed

Data Path : Z:\voasrv\HPCHEM1\MSVOA_D\Data\VD050522\
 Data File : VD072815.D
 Acq On : 05 May 2022 17:39
 Operator : VA/SY
 Sample : N2672-08
 Misc : 6.90G/5.00ml/MSVOA_D/SOIL
 ALS Vial : 17 Sample Multiplier: 1

Instrument :
 MSVOA_D
 ClientSampleId :
 08

Quant Time: May 06 03:51:01 2022
 Quant Method : Z:\voasrv\HPCHEM1\MSVOA_D\Method\82D050222S.M
 Quant Title : SW846 8260
 QLast Update : Tue May 03 08:33:49 2022
 Response via : Initial Calibration

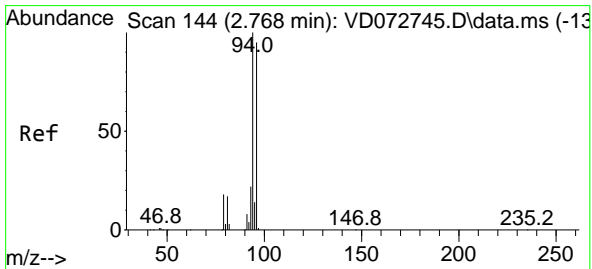
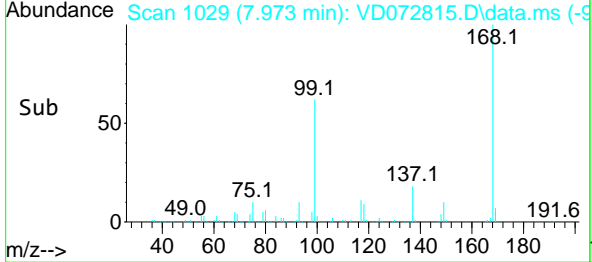
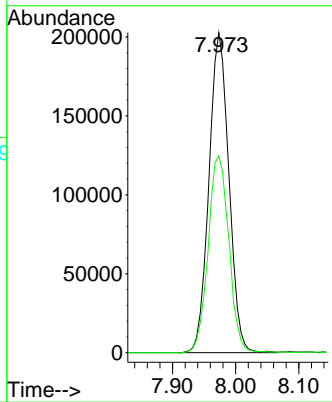
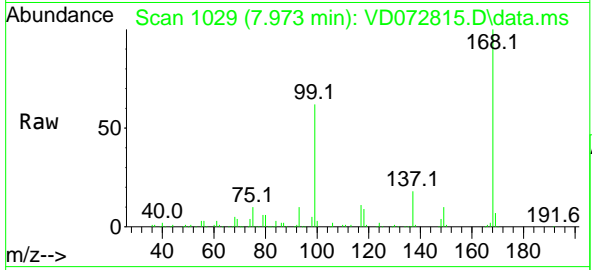




#1
 Pentafluorobenzene
 Concen: 50.000 ug/l
 RT: 7.973 min Scan# 10
 Delta R.T. -0.006 min
 Lab File: VD072815.D
 Acq: 05 May 2022 17:39

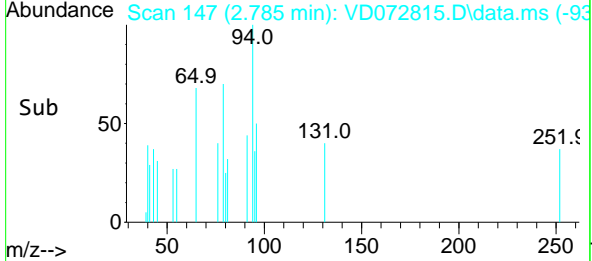
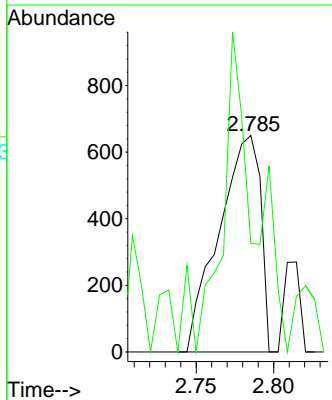
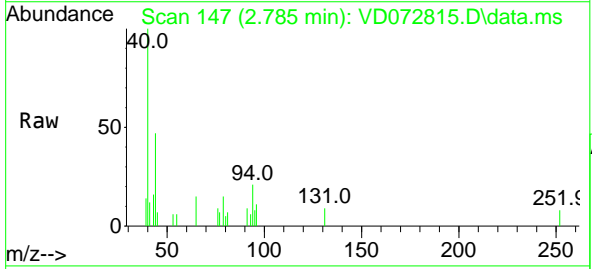
Instrument : MSVOA_D
 ClientSampleId : 08

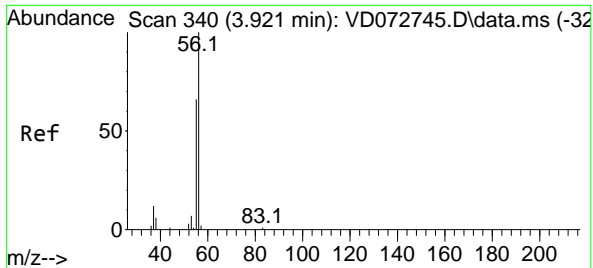
Tgt Ion:168 Resp: 444757
 Ion Ratio Lower Upper
 168 100
 99 61.5 49.8 74.6



#5
 Bromomethane
 Concen: Below Cal
 RT: 2.785 min Scan# 147
 Delta R.T. 0.017 min
 Lab File: VD072815.D
 Acq: 05 May 2022 17:39

Tgt Ion: 94 Resp: 1214
 Ion Ratio Lower Upper
 94 100
 96 50.2 77.6 116.4#

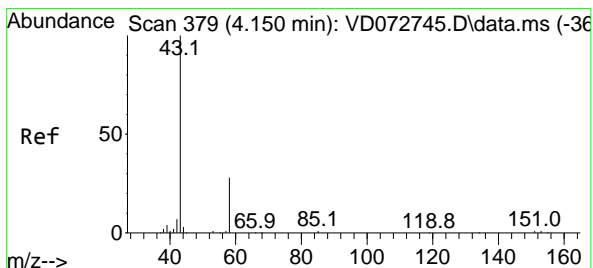
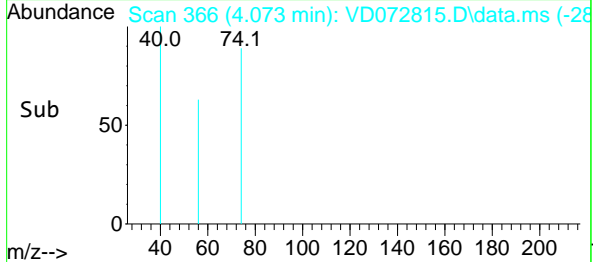
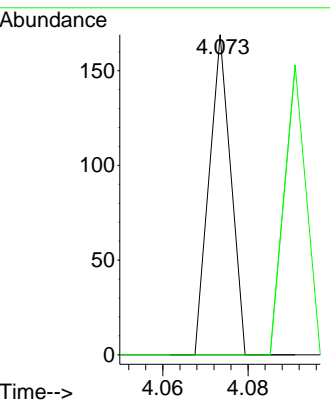
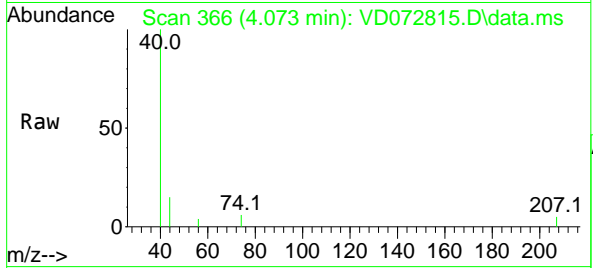




#13
 Acrolein
 Concen: Below Cal
 RT: 4.073 min Scan# 308
 Delta R.T. 0.152 min
 Lab File: VD072815.D
 Acq: 05 May 2022 17:39

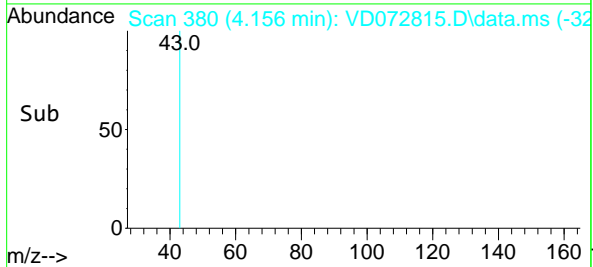
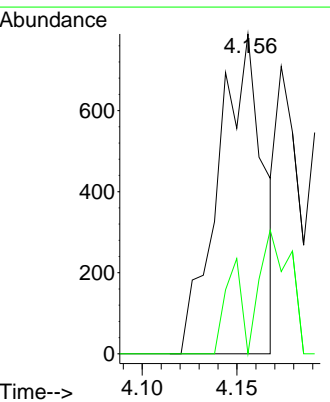
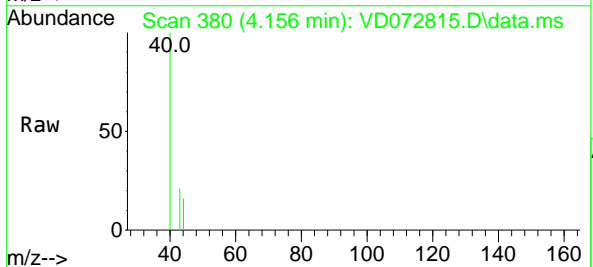
Instrument : MSVOA_D
 ClientSampleId : 08

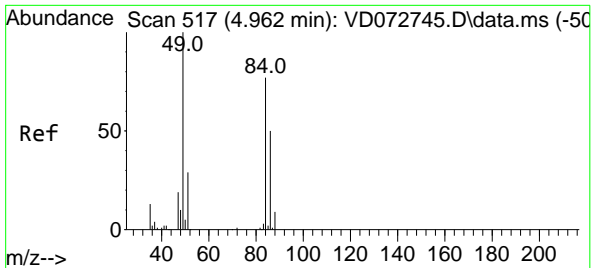
Tgt Ion: 56 Resp: 60
 Ion Ratio Lower Upper
 56 100
 55 90.0 57.1 85.7#



#16
 Acetone
 Concen: Below Cal
 RT: 4.156 min Scan# 380
 Delta R.T. 0.006 min
 Lab File: VD072815.D
 Acq: 05 May 2022 17:39

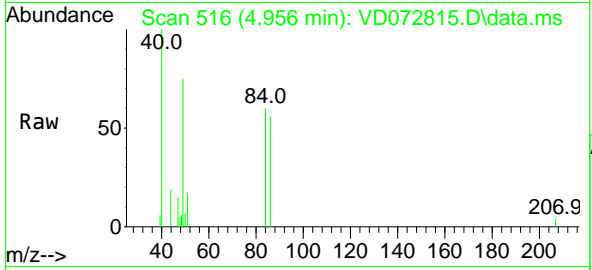
Tgt Ion: 43 Resp: 1291
 Ion Ratio Lower Upper
 43 100
 58 0.0 22.1 33.1#





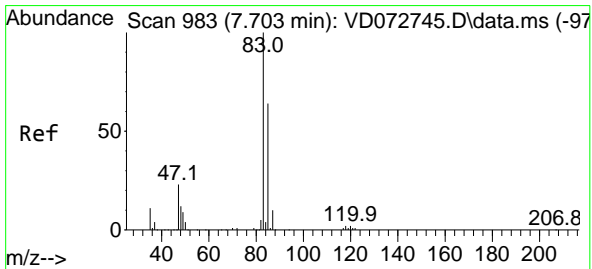
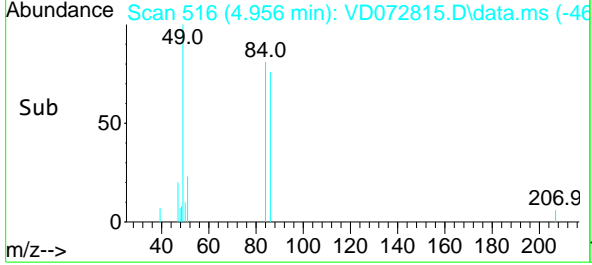
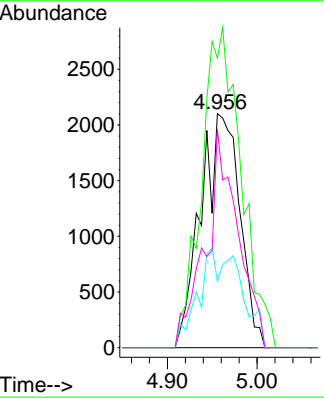
#20
 Methylene Chloride
 Concen: Below Cal
 RT: 4.956 min Scan# 51
 Delta R.T. -0.006 min
 Lab File: VD072815.D
 Acq: 05 May 2022 17:39

Instrument :
 MSVOA_D
 ClientSampleId :
 08



Tgt Ion: 84 Resp: 6320

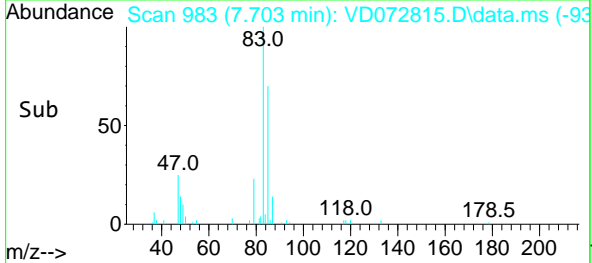
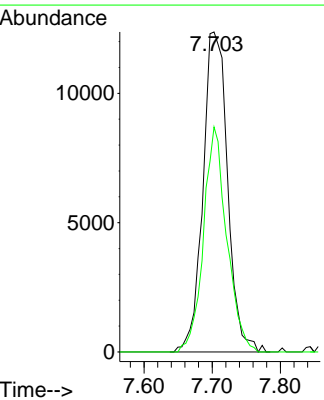
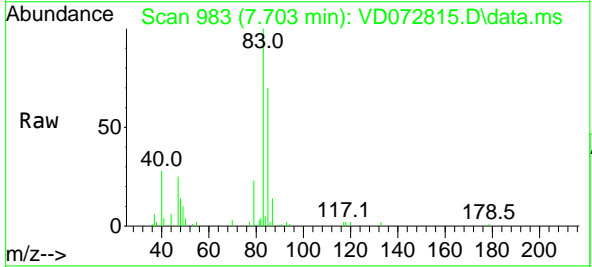
Ion	Ratio	Lower	Upper
84	100		
49	123.8	112.8	169.2
51	28.6	32.6	48.8#
86	93.5	47.9	71.9#

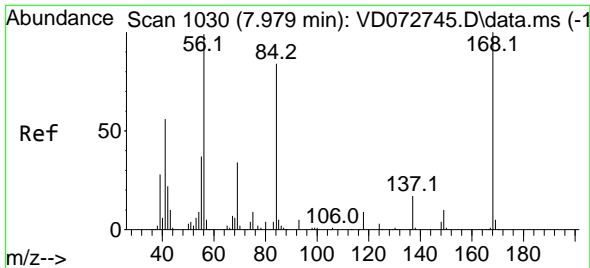


#30
 Chloroform
 Concen: 2.573 ug/l
 RT: 7.703 min Scan# 983
 Delta R.T. -0.000 min
 Lab File: VD072815.D
 Acq: 05 May 2022 17:39

Tgt Ion: 83 Resp: 31156

Ion	Ratio	Lower	Upper
83	100		
85	70.3	52.7	79.1



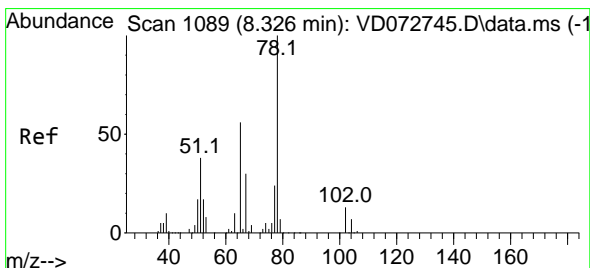
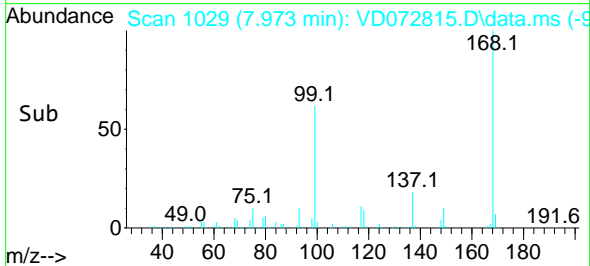
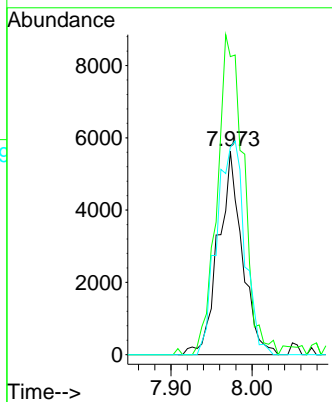
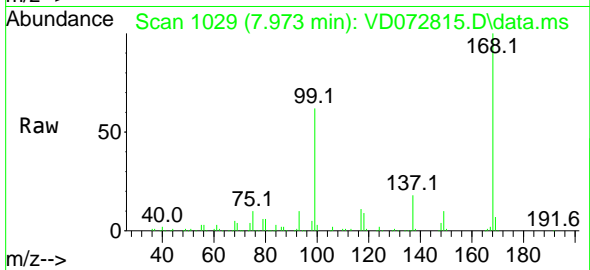


#31
 Cyclohexane
 Concen: 1.142 ug/l
 RT: 7.973 min Scan# 1029
 Delta R.T. -0.006 min
 Lab File: VD072815.D
 Acq: 05 May 2022 17:39

Instrument : MSVOA_D
 ClientSampleId : 08

Tgt Ion: 56 Resp: 11522

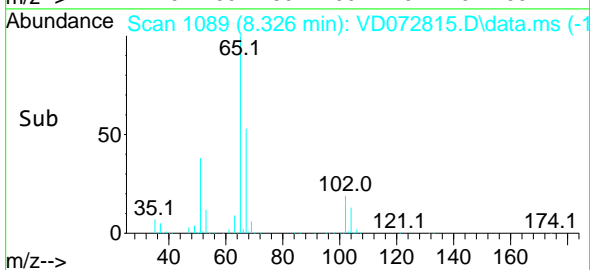
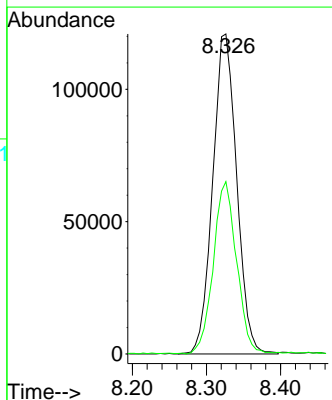
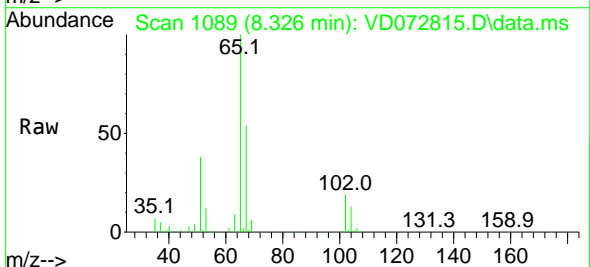
Ion	Ratio	Lower	Upper
56	100		
69	146.4	25.4	38.2#
84	101.9	63.0	94.4#

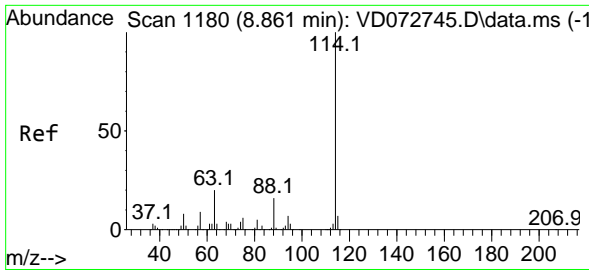


#33
 1,2-Dichloroethane-d4
 Concen: 47.013 ug/l
 RT: 8.326 min Scan# 1089
 Delta R.T. 0.000 min
 Lab File: VD072815.D
 Acq: 05 May 2022 17:39

Tgt Ion: 65 Resp: 271417

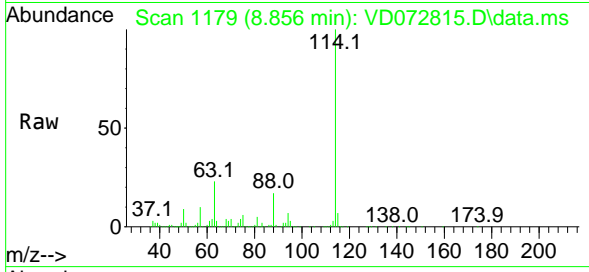
Ion	Ratio	Lower	Upper
65	100		
67	52.5	0.0	101.4



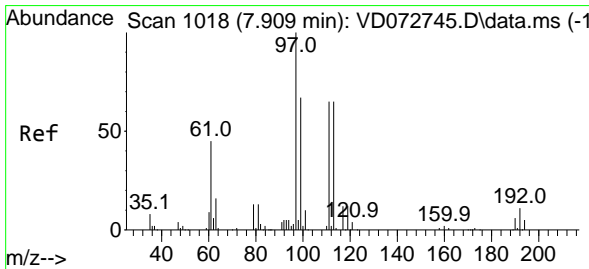
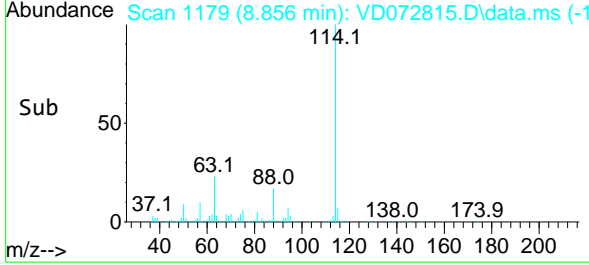
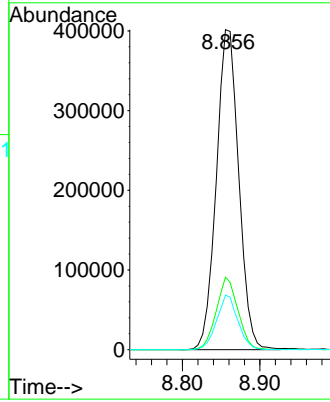


#34
 1,4-Difluorobenzene
 Concen: 50.000 ug/l
 RT: 8.856 min Scan# 11179
 Delta R.T. -0.005 min
 Lab File: VD072815.D
 Acq: 05 May 2022 17:39

Instrument : MSVOA_D
 ClientSampleId : 08

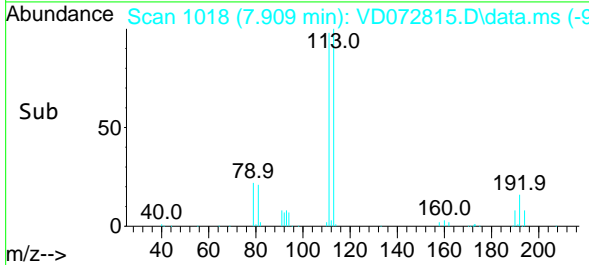
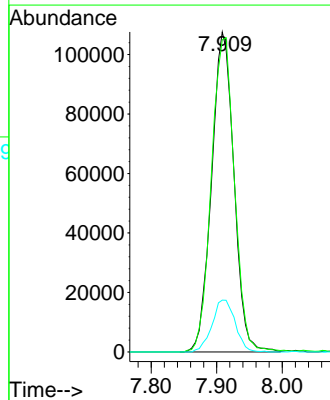
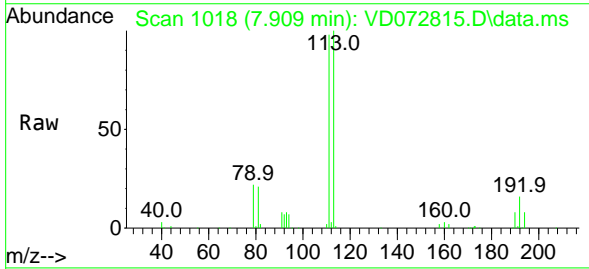


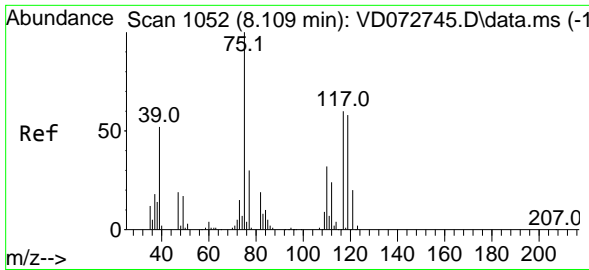
Tgt Ion:114 Resp: 808289
 Ion Ratio Lower Upper
 114 100
 63 22.6 0.0 46.6
 88 17.0 0.0 33.2



#35
 Dibromofluoromethane
 Concen: 44.898 ug/l
 RT: 7.909 min Scan# 1018
 Delta R.T. -0.000 min
 Lab File: VD072815.D
 Acq: 05 May 2022 17:39

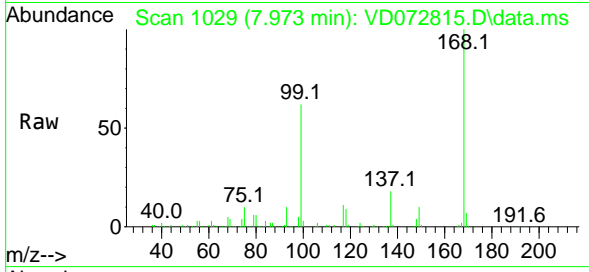
Tgt Ion:113 Resp: 254873
 Ion Ratio Lower Upper
 113 100
 111 101.4 83.8 125.6
 192 16.8 14.6 21.8



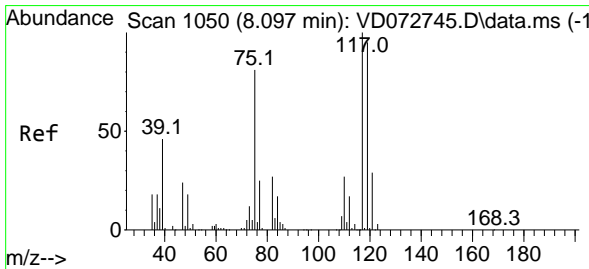
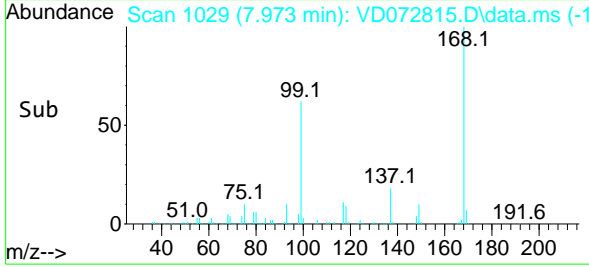
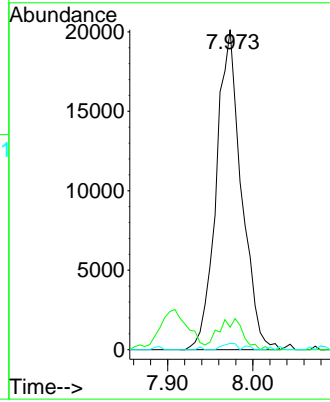


#36
 1,1-Dichloropropene
 Concen: 4.474 ug/l
 RT: 7.973 min Scan# 1029
 Delta R.T. -0.136 min
 Lab File: VD072815.D
 Acq: 05 May 2022 17:39

Instrument : MSVOA_D
 ClientSampleId : 08

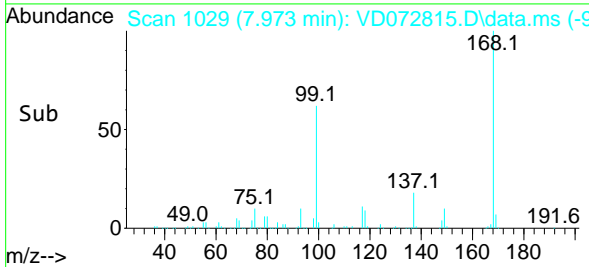
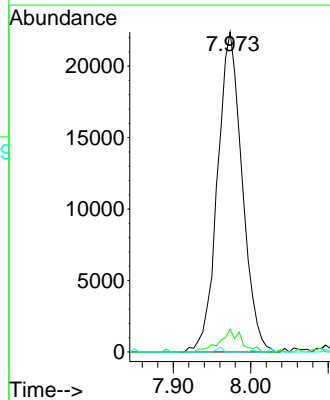
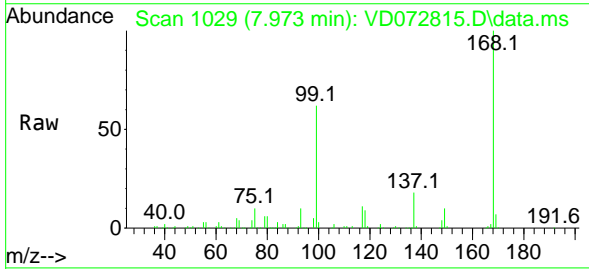


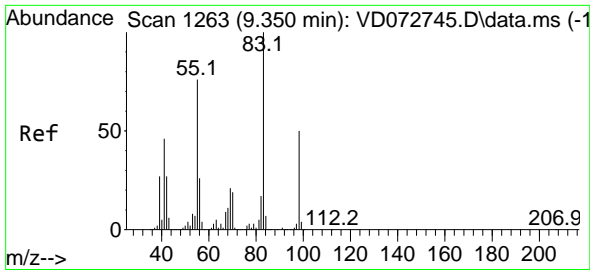
Tgt Ion: 75 Resp: 41297
 Ion Ratio Lower Upper
 75 100
 110 9.5 16.4 49.1#
 77 1.1 24.2 36.2#



#38
 Carbon Tetrachloride
 Concen: 5.167 ug/l
 RT: 7.973 min Scan# 1029
 Delta R.T. -0.124 min
 Lab File: VD072815.D
 Acq: 05 May 2022 17:39

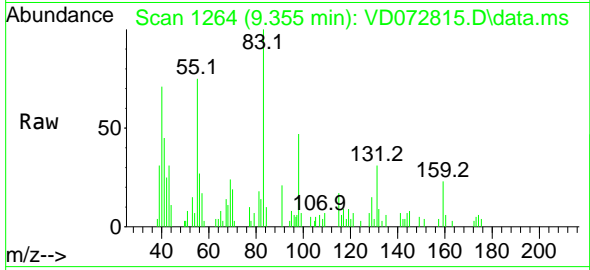
Tgt Ion: 117 Resp: 49508
 Ion Ratio Lower Upper
 117 100
 119 7.1 75.8 113.6#
 121 0.0 24.5 36.7#



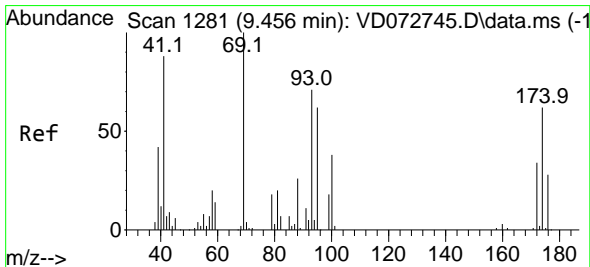
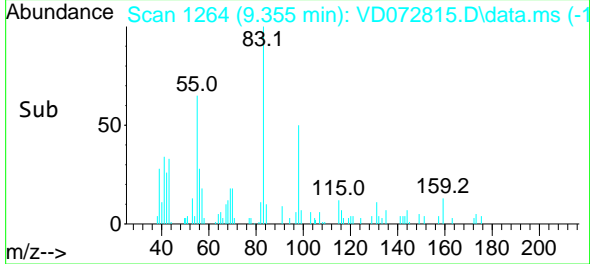
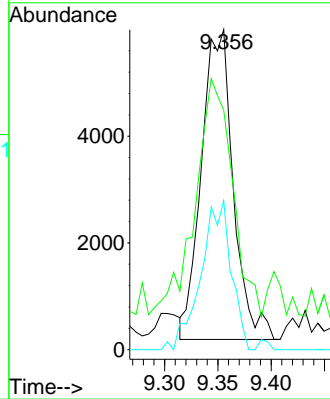


#39
 Methylcyclohexane
 Concen: 1.124 ug/l
 RT: 9.355 min Scan# 11
 Delta R.T. 0.005 min
 Lab File: VD072815.D
 Acq: 05 May 2022 17:39

Instrument :
 MSVOA_D
 ClientSampleId :
 08

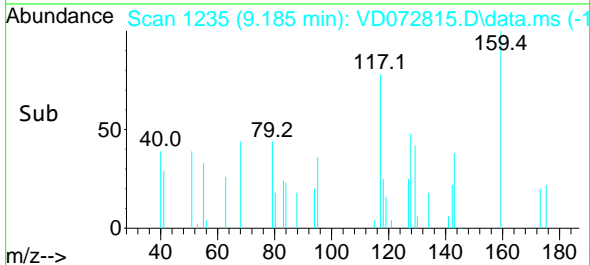
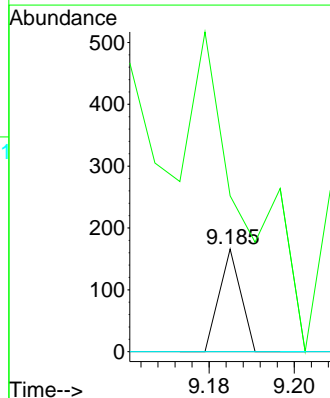
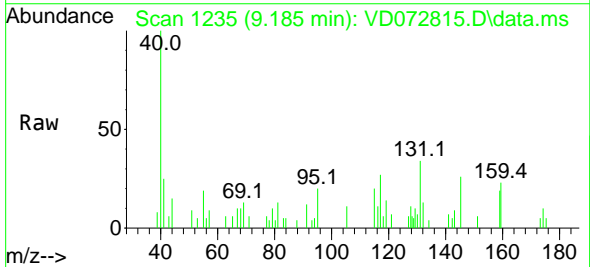


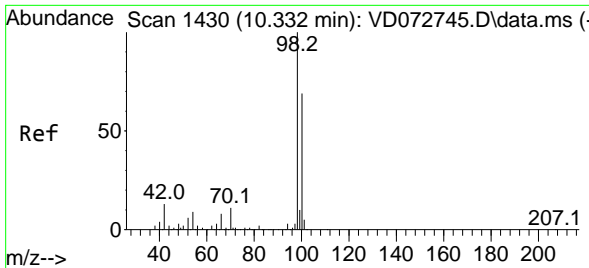
Tgt Ion: 83 Resp: 12039
 Ion Ratio Lower Upper
 83 100
 55 58.4 63.2 94.8#
 98 48.1 38.2 57.4



#49
 1,4-Dioxane
 Concen: 1.357 ug/l
 RT: 9.185 min Scan# 1235
 Delta R.T. -0.271 min
 Lab File: VD072815.D
 Acq: 05 May 2022 17:39

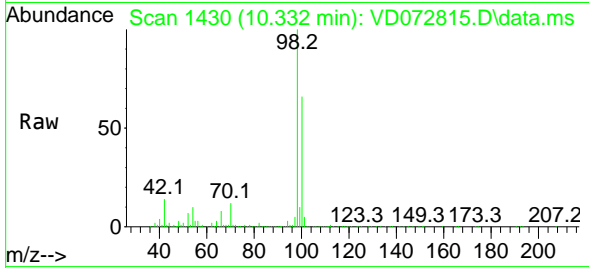
Tgt Ion: 88 Resp: 59
 Ion Ratio Lower Upper
 88 100
 43 0.0 31.0 46.4#
 58 0.0 58.1 87.1#



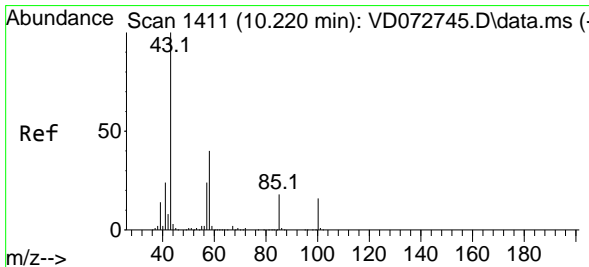
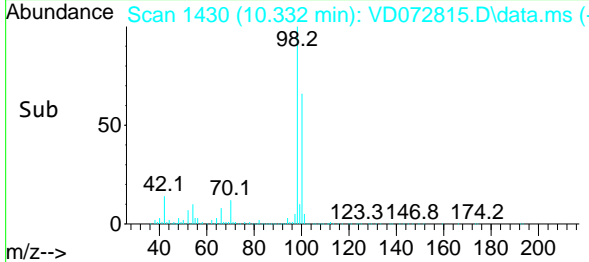
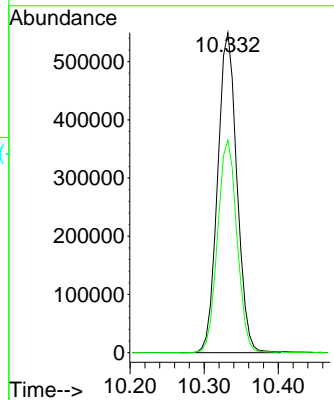


#50
 Toluene-d8
 Concen: 48.854 ug/l
 RT: 10.332 min Scan# 14
 Delta R.T. -0.000 min
 Lab File: VD072815.D
 Acq: 05 May 2022 17:39

Instrument : MSVOA_D
 ClientSampleId : 08

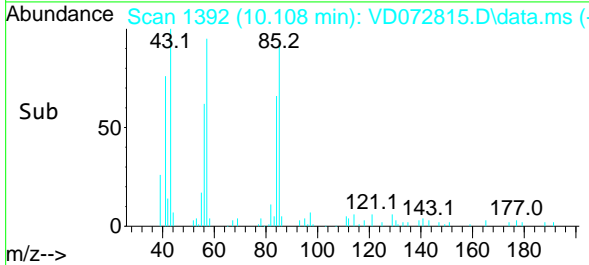
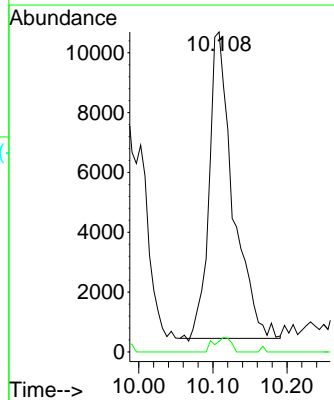
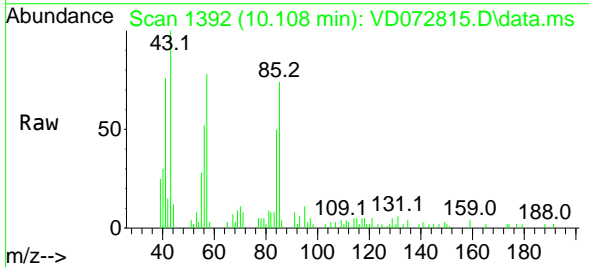


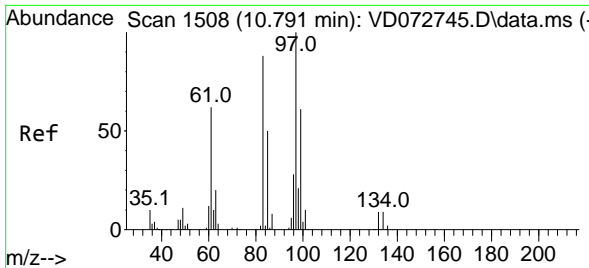
Tgt Ion: 98 Resp: 994817
 Ion Ratio Lower Upper
 98 100
 100 66.6 52.4 78.6



#51
 4-Methyl-2-Pentanone
 Concen: 5.658 ug/l
 RT: 10.108 min Scan# 1392
 Delta R.T. -0.112 min
 Lab File: VD072815.D
 Acq: 05 May 2022 17:39

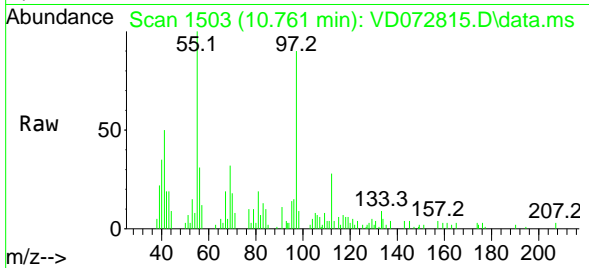
Tgt Ion: 43 Resp: 23028
 Ion Ratio Lower Upper
 43 100
 58 3.4 28.6 43.0#



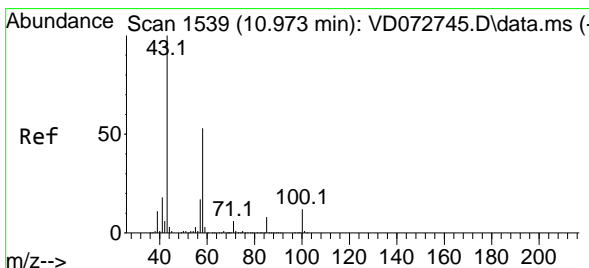
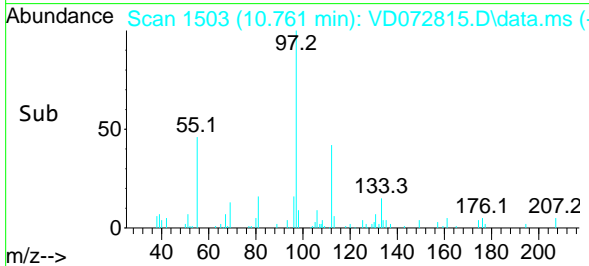
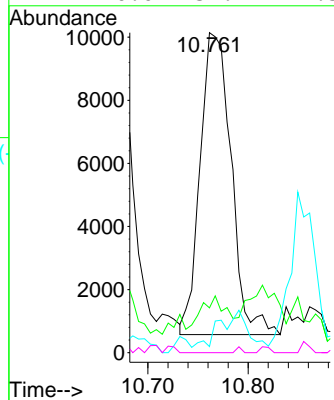


#55
 1,1,2-Trichloroethane
 Concen: 3.949 ug/l
 RT: 10.761 min Scan# 11
 Delta R.T. -0.030 min
 Lab File: VD072815.D
 Acq: 05 May 2022 17:39

Instrument : MSVOA_D
 ClientSampleId : 08

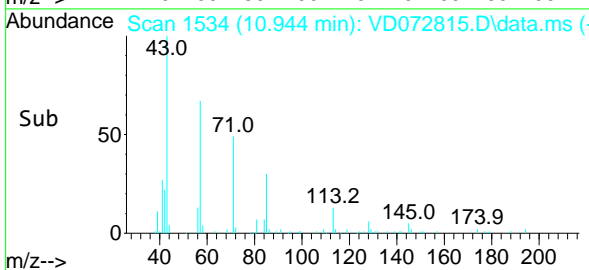
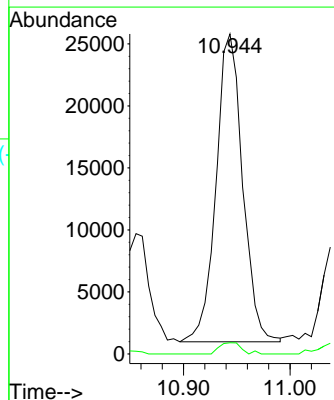
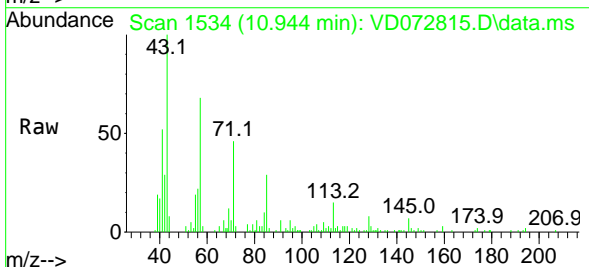


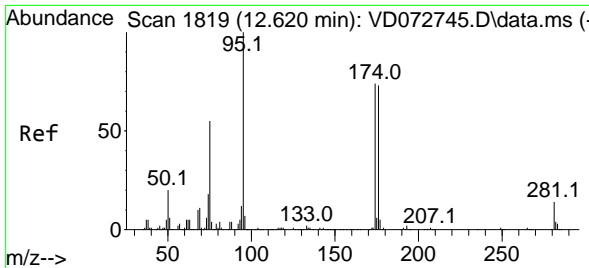
Tgt Ion	Resp	Lower	Upper
97	100		
83	2.2	69.0	103.4#
85	0.0	42.6	63.8#
99	0.0	51.7	77.5#



#59
 2-Hexanone
 Concen: 15.719 ug/l
 RT: 10.944 min Scan# 1534
 Delta R.T. -0.029 min
 Lab File: VD072815.D
 Acq: 05 May 2022 17:39

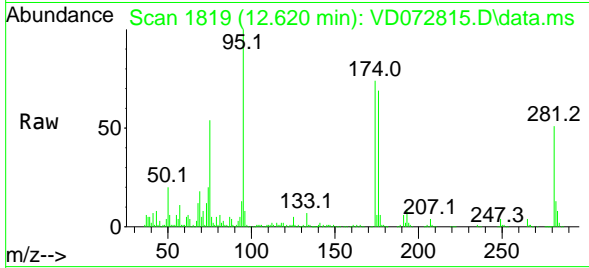
Tgt Ion	Resp	Lower	Upper
43	100		
58	3.0	25.3	75.9#



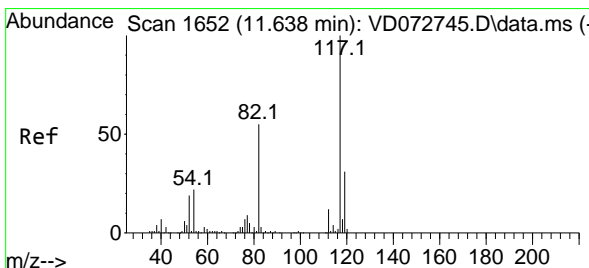
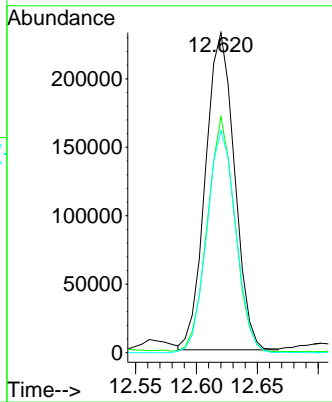
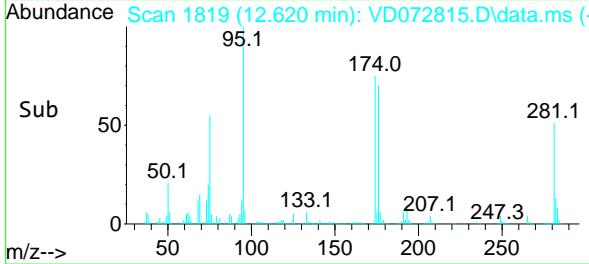


#62
 4-Bromofluorobenzene
 Concen: 50.687 ug/l
 RT: 12.620 min Scan# 1819
 Delta R.T. 0.000 min
 Lab File: VD072815.D
 Acq: 05 May 2022 17:39

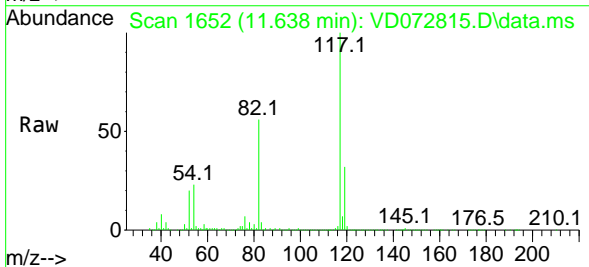
Instrument : MSVOA_D
 ClientSampleId : 08



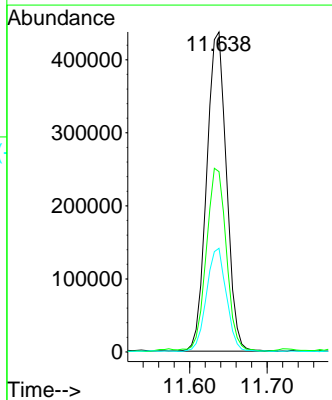
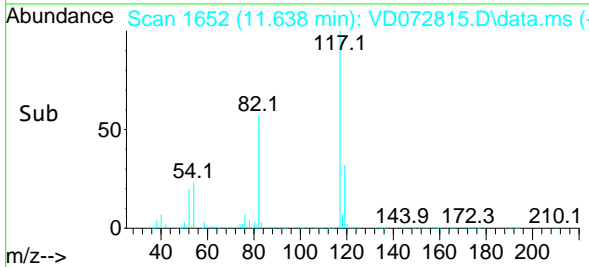
Tgt Ion: 95 Resp: 384856
 Ion Ratio Lower Upper
 95 100
 174 70.1 0.0 152.8
 176 69.8 0.0 145.4

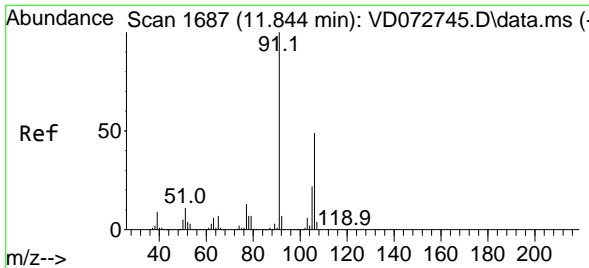


#63
 Chlorobenzene-d5
 Concen: 50.000 ug/l
 RT: 11.638 min Scan# 1652
 Delta R.T. -0.000 min
 Lab File: VD072815.D
 Acq: 05 May 2022 17:39



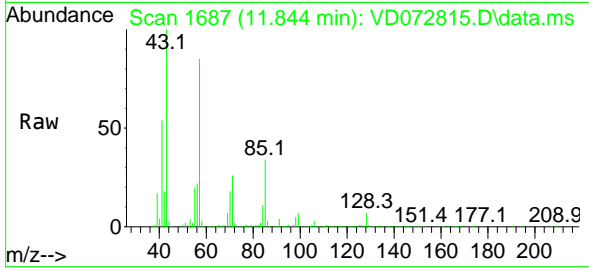
Tgt Ion: 117 Resp: 774127
 Ion Ratio Lower Upper
 117 100
 82 55.9 45.3 67.9
 119 32.3 26.6 40.0



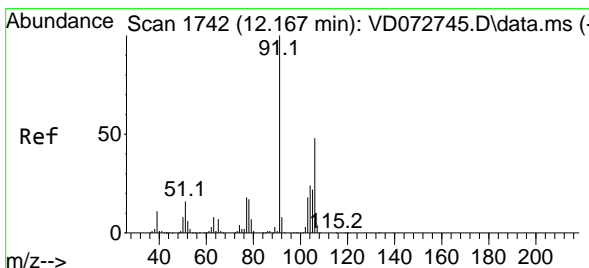
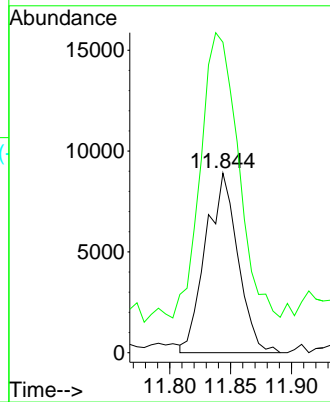
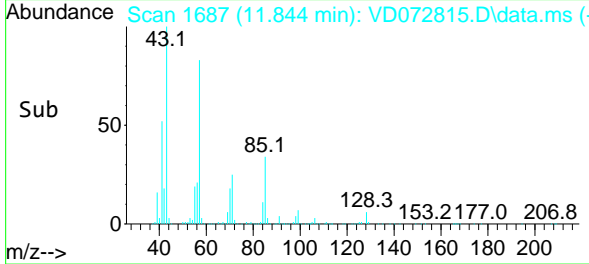


#68
 m/p-Xylenes
 Concen: 1.369 ug/l
 RT: 11.844 min Scan# 1687
 Delta R.T. -0.000 min
 Lab File: VD072815.D
 Acq: 05 May 2022 17:39

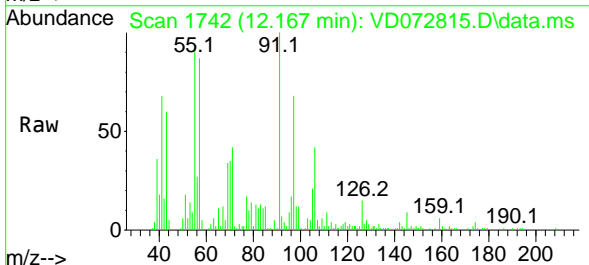
Instrument : MSVOA_D
 ClientSampleId : 08



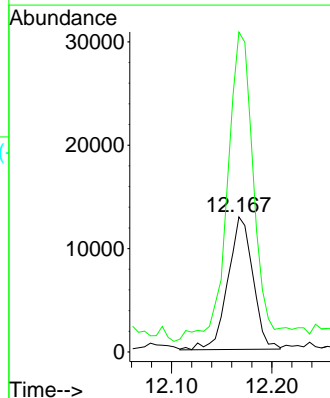
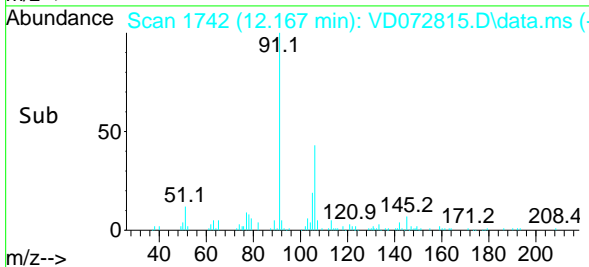
Tgt Ion:106 Resp: 16343
 Ion Ratio Lower Upper
 106 100
 91 184.6 163.7 245.5

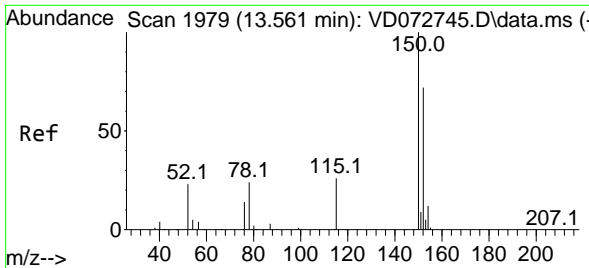


#69
 o-Xylene
 Concen: 1.991 ug/l
 RT: 12.167 min Scan# 1742
 Delta R.T. 0.000 min
 Lab File: VD072815.D
 Acq: 05 May 2022 17:39



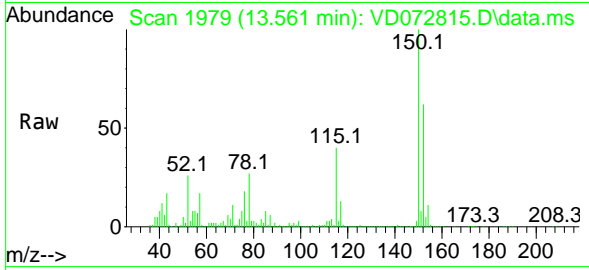
Tgt Ion:106 Resp: 22199
 Ion Ratio Lower Upper
 106 100
 91 243.9 110.4 331.2



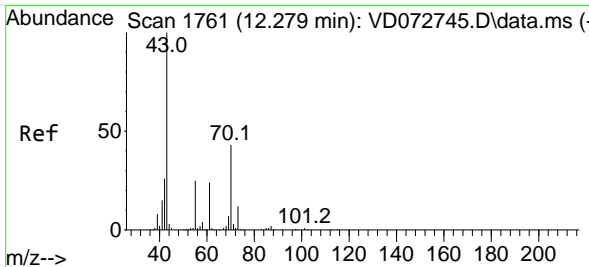
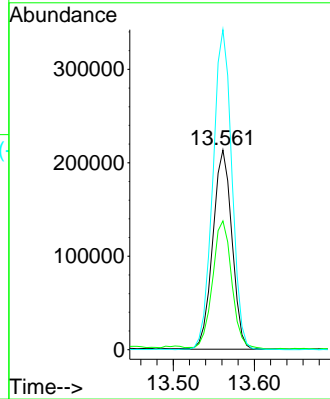
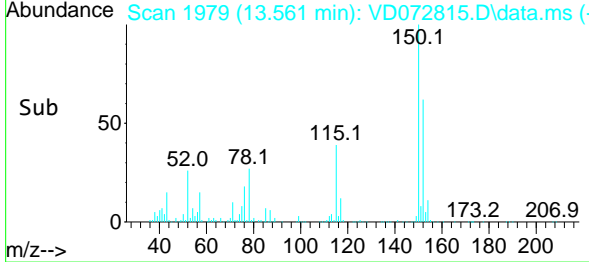


#72
 1,4-Dichlorobenzene-d4
 Concen: 50.000 ug/l
 RT: 13.561 min Scan# 1979
 Delta R.T. 0.000 min
 Lab File: VD072815.D
 Acq: 05 May 2022 17:39

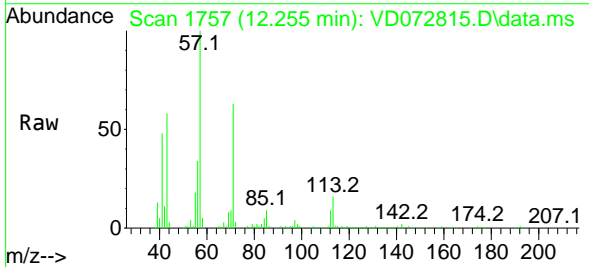
Instrument : MSVOA_D
 ClientSampleId : 08



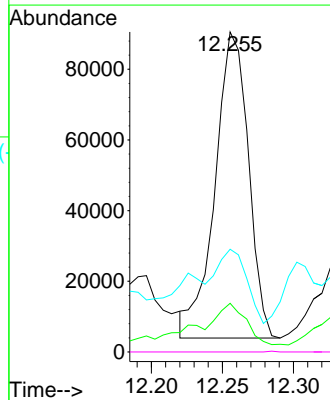
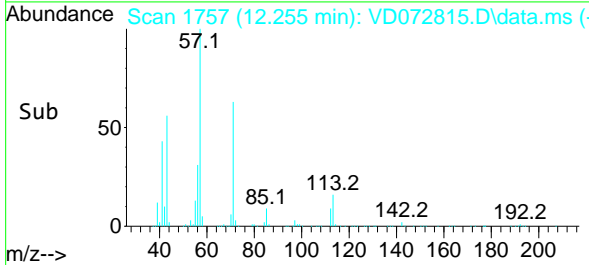
Tgt Ion: 152 Resp: 349592
 Ion Ratio Lower Upper
 152 100
 115 65.1 31.3 93.8
 150 159.6 0.0 348.6

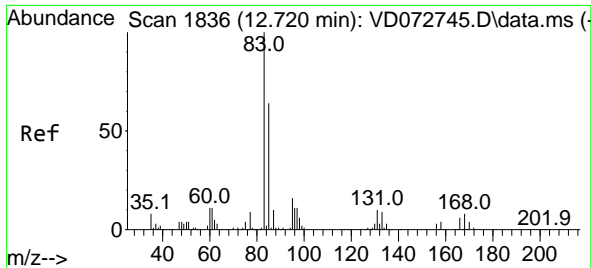


#74
 N-amy1 acetate
 Concen: 20.905 ug/l
 RT: 12.255 min Scan# 1757
 Delta R.T. -0.024 min
 Lab File: VD072815.D
 Acq: 05 May 2022 17:39



Tgt Ion: 43 Resp: 141599
 Ion Ratio Lower Upper
 43 100
 70 19.4 31.3 46.9#
 55 22.4 20.0 30.0
 61 0.0 17.8 26.8#

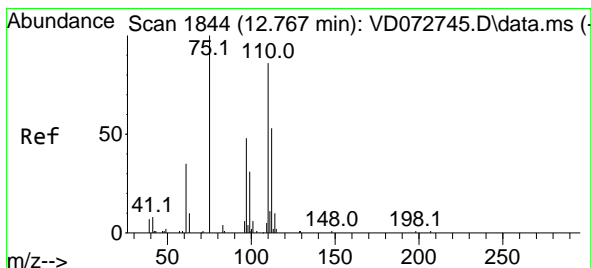
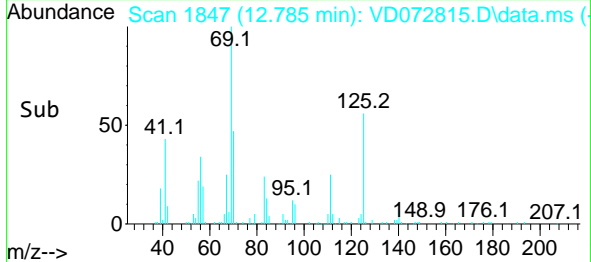
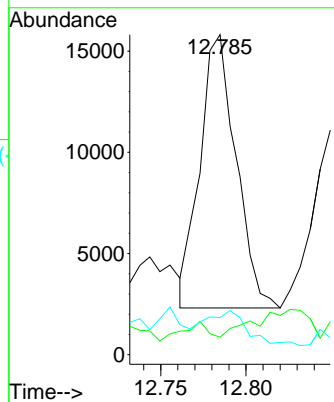
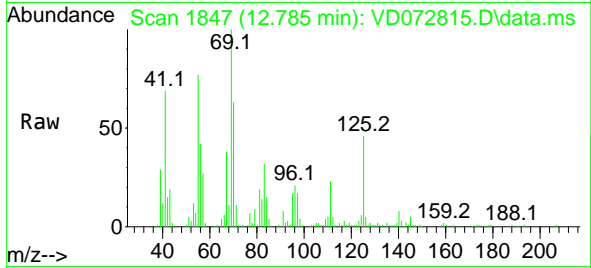




#75
 1,1,2,2-Tetrachloroethane
 Concen: 3.617 ug/l
 RT: 12.785 min Scan# 1819
 Delta R.T. 0.065 min
 Lab File: VD072815.D
 Acq: 05 May 2022 17:39

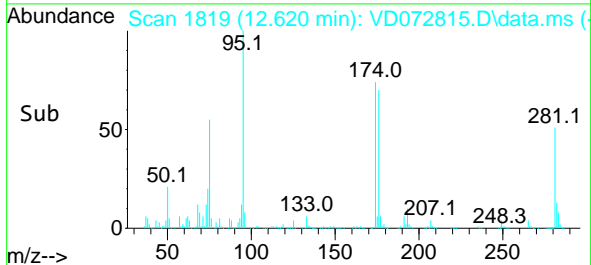
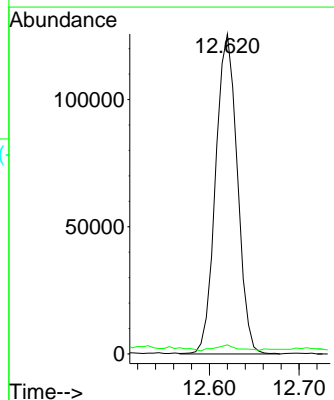
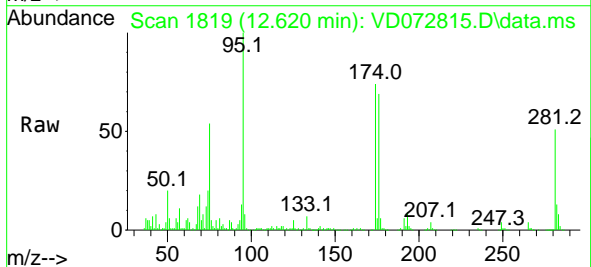
Instrument : MSVOA_D
 ClientSampleId : 08

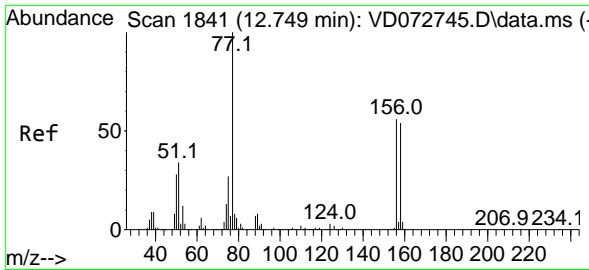
Tgt Ion	Resp	Lower	Upper
83	19859		
131	5.1	5.0	14.9
85	0.0	32.6	98.0#



#76
 1,2,3-Trichloropropane
 Concen: 54.217 ug/l
 RT: 12.620 min Scan# 1819
 Delta R.T. -0.147 min
 Lab File: VD072815.D
 Acq: 05 May 2022 17:39

Tgt Ion	Resp	Lower	Upper
75	211347		
77	2.0	0.0	0.0#

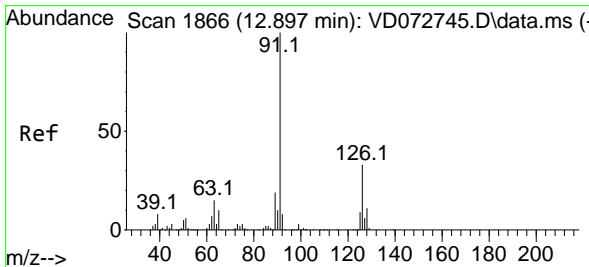
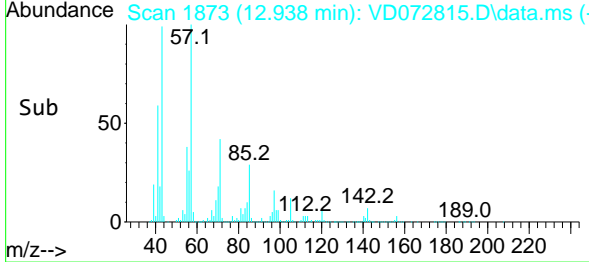
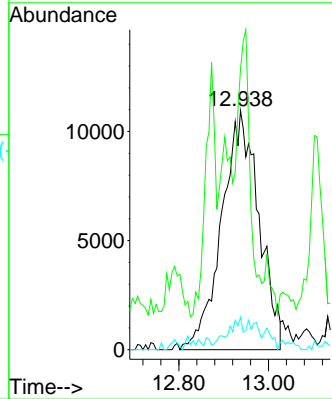
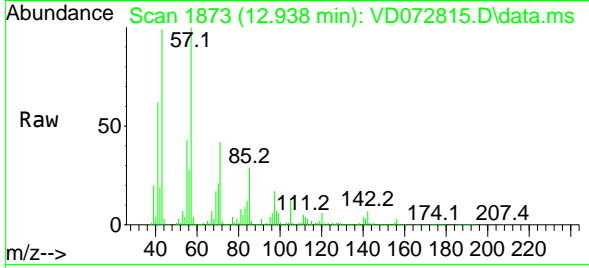




#77
 Bromobenzene
 Concen: 9.725 ug/l
 RT: 12.938 min Scan# 1873
 Delta R.T. 0.189 min
 Lab File: VD072815.D
 Acq: 05 May 2022 17:39

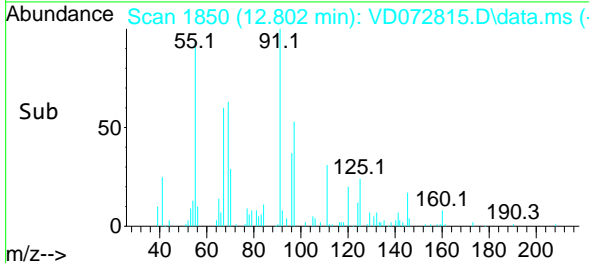
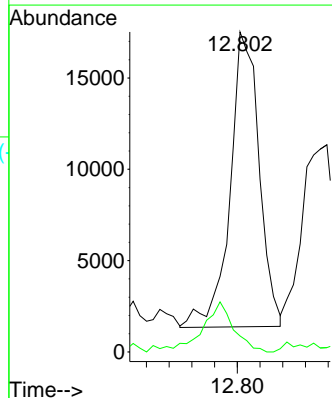
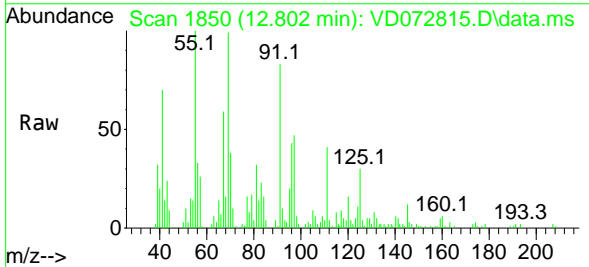
Instrument : MSVOA_D
 ClientSampleId : 08

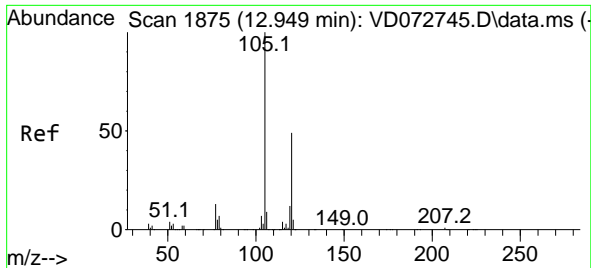
Tgt Ion:156 Resp: 62810
 Ion Ratio Lower Upper
 156 100
 77 0.0 102.8 308.3#
 158 6.0 48.7 146.1#



#79
 2-Chlorotoluene
 Concen: 1.432 ug/l
 RT: 12.802 min Scan# 1850
 Delta R.T. -0.095 min
 Lab File: VD072815.D
 Acq: 05 May 2022 17:39

Tgt Ion: 91 Resp: 28675
 Ion Ratio Lower Upper
 91 100
 126 18.8 16.2 48.6

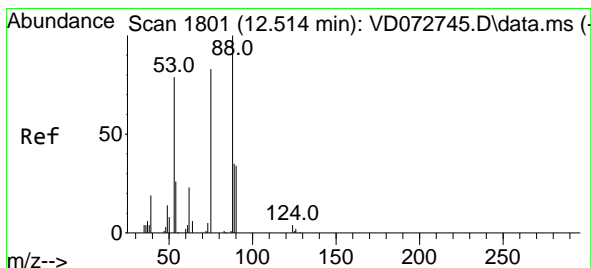
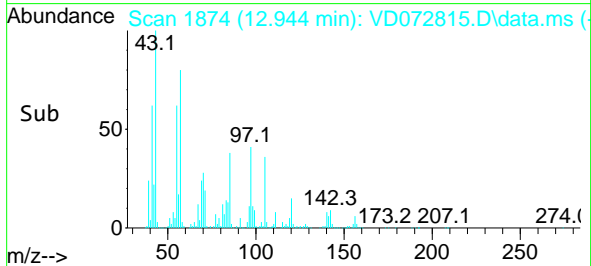
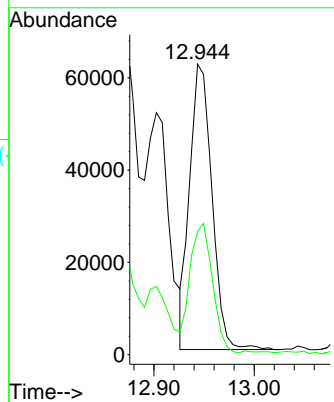
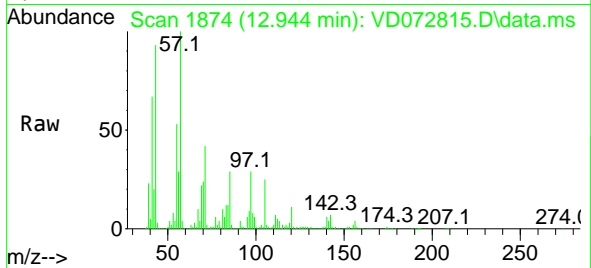




#80
 1,3,5-Trimethylbenzene
 Concen: 4.133 ug/l
 RT: 12.944 min Scan# 1874
 Delta R.T. -0.005 min
 Lab File: VD072815.D
 Acq: 05 May 2022 17:39

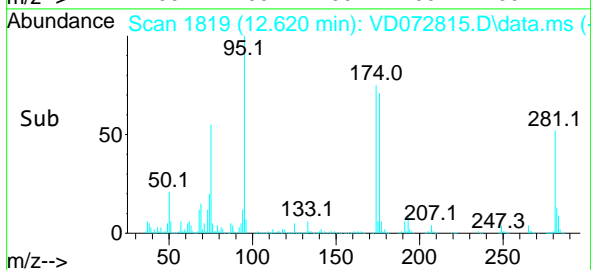
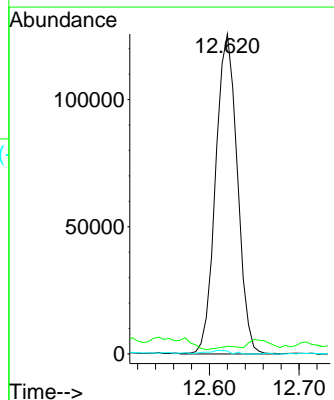
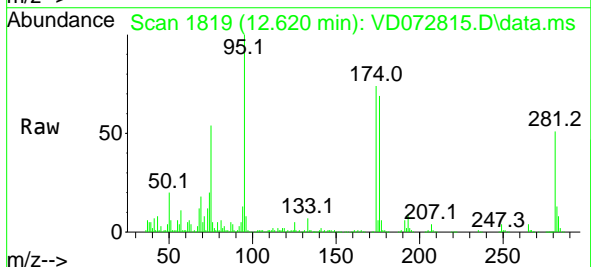
Instrument : MSVOA_D
 ClientSampleId : 08

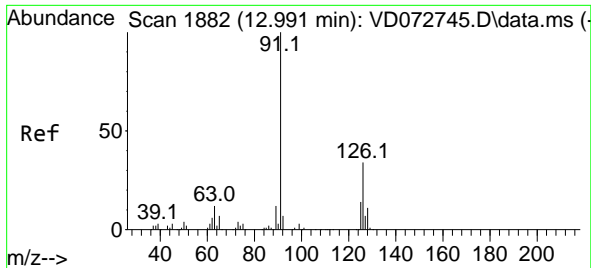
Tgt Ion: 105 Resp: 95311
 Ion Ratio Lower Upper
 105 100
 120 45.6 24.3 72.8



#81
 trans-1,4-Dichloro-2-butene
 Concen: 124.677 ug/l
 RT: 12.620 min Scan# 1819
 Delta R.T. 0.106 min
 Lab File: VD072815.D
 Acq: 05 May 2022 17:39

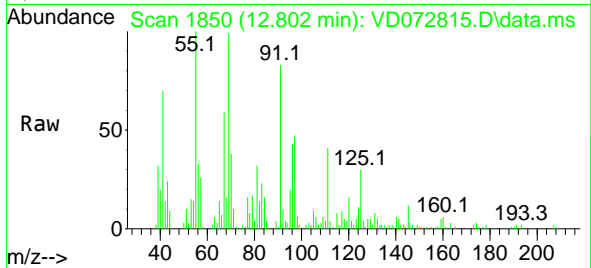
Tgt Ion: 75 Resp: 211347
 Ion Ratio Lower Upper
 75 100
 53 0.9 86.5 129.7#
 89 1.1 33.9 50.9#



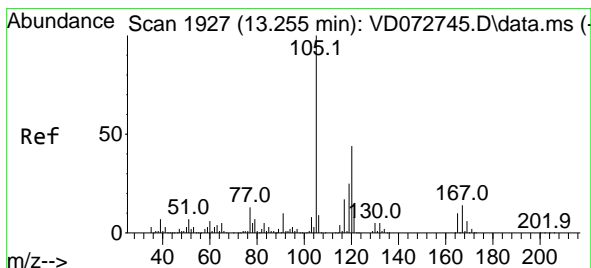
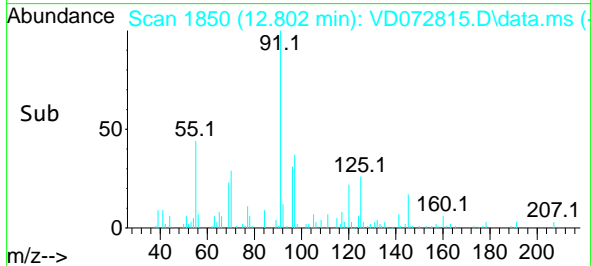
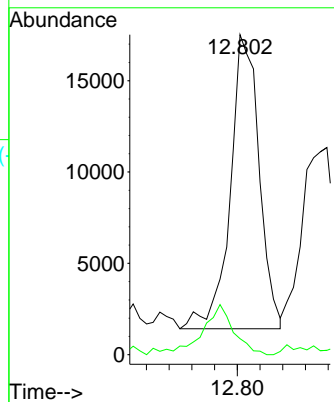


#82
 4-Chlorotoluene
 Concen: 1.359 ug/l
 RT: 12.802 min Scan# 1882
 Delta R.T. -0.189 min
 Lab File: VD072815.D
 Acq: 05 May 2022 17:39

Instrument : MSVOA_D
 ClientSampleId : 08

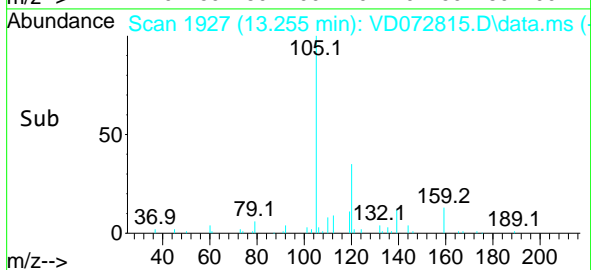
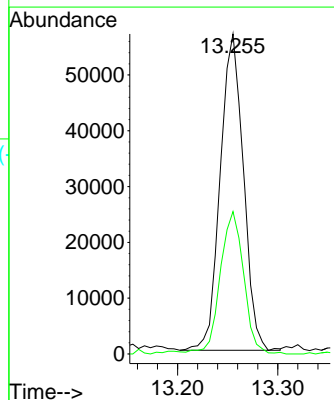
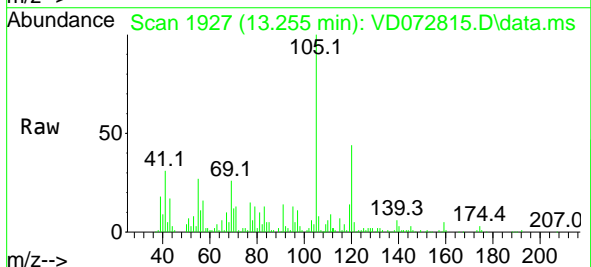


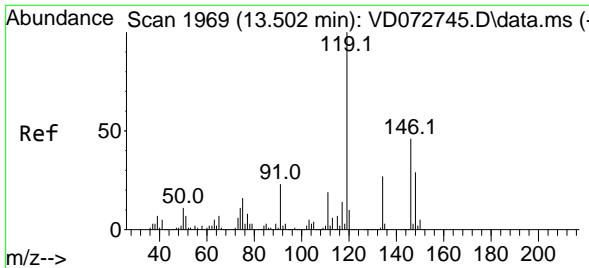
Tgt Ion: 91 Resp: 28428
 Ion Ratio Lower Upper
 91 100
 126 19.0 16.5 49.5



#84
 1,2,4-Trimethylbenzene
 Concen: 3.952 ug/l
 RT: 13.255 min Scan# 1927
 Delta R.T. 0.000 min
 Lab File: VD072815.D
 Acq: 05 May 2022 17:39

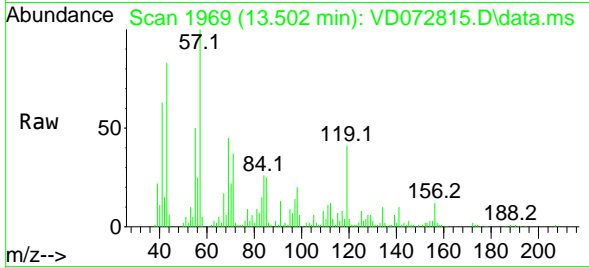
Tgt Ion: 105 Resp: 91095
 Ion Ratio Lower Upper
 105 100
 120 45.4 22.3 66.8





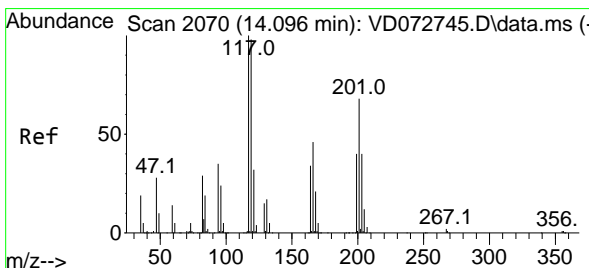
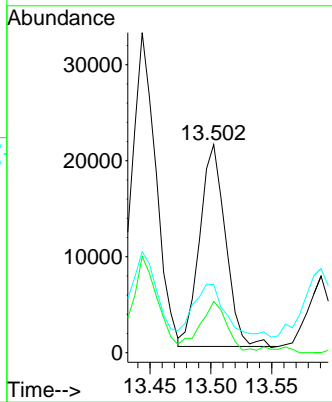
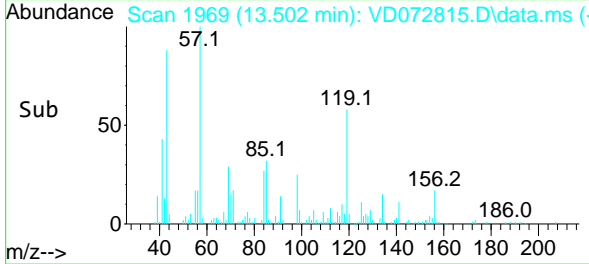
#86
 p-Isopropyltoluene
 Concen: 1.280 ug/l
 RT: 13.502 min Scan# 1969
 Delta R.T. 0.000 min
 Lab File: VD072815.D
 Acq: 05 May 2022 17:39

Instrument : MSVOA_D
 ClientSampleId : 08



Tgt Ion:119 Resp: 31029

Ion	Ratio	Lower	Upper
119	100		
134	24.9	12.9	38.6
91	32.2	12.1	36.3



#90
 Hexachloroethane
 Concen: 1.999 ug/l
 RT: 14.102 min Scan# 2071
 Delta R.T. 0.006 min
 Lab File: VD072815.D
 Acq: 05 May 2022 17:39

Tgt Ion:117 Resp: 9930

Ion	Ratio	Lower	Upper
117	100		
201	0.0	33.4	100.2

