

Data Path : Z:\voasrv\HPCHEM1\MSVOA\_D\Data\VD051525\  
 Data File : VD080348.D  
 Acq On : 15 May 2025 15:06  
 Operator : RP/MD  
 Sample : Q2034-07  
 Misc : 5.59G/10ml/MSVOA\_D/SOIL/A  
 ALS Vial : 12 Sample Multiplier: 1

Instrument :  
 MSVOA\_D  
 ClientSampleId :  
 L3-WC-2-VOC

Quant Time: May 16 02:58:00 2025  
 Quant Method : Z:\voasrv\HPCHEM1\MSVOA\_D\Method\82D050625S.M  
 Quant Title : SW846 8260  
 QLast Update : Wed May 07 08:57:11 2025  
 Response via : Initial Calibration

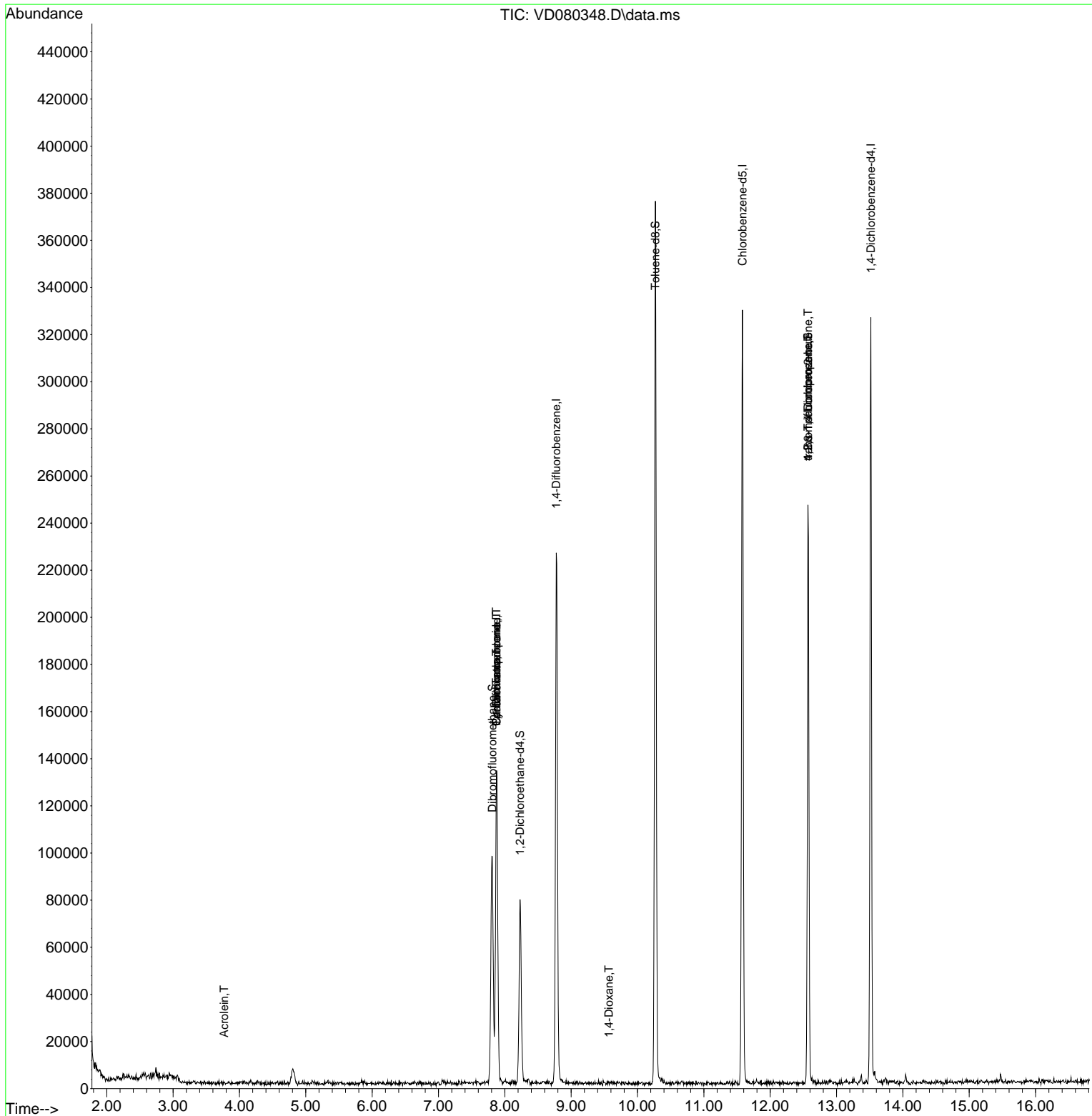
Compound	R.T.	QIon	Response	Conc	Units	Dev(Min)
-----						
Internal Standards						
1) Pentafluorobenzene	7.876	168	98926	50.000	ug/l	0.00
34) 1,4-Difluorobenzene	8.776	114	195390	50.000	ug/l	0.00
63) Chlorobenzene-d5	11.582	117	189607	50.000	ug/l	0.00
72) 1,4-Dichlorobenzene-d4	13.517	152	85924	50.000	ug/l	0.00
System Monitoring Compounds						
33) 1,2-Dichloroethane-d4	8.229	65	62756	49.056	ug/l	0.00
Spiked Amount	50.000	Range	50 - 163	Recovery	=	98.120%
35) Dibromofluoromethane	7.811	113	69978	53.436	ug/l	0.00
Spiked Amount	50.000	Range	54 - 147	Recovery	=	106.880%
50) Toluene-d8	10.270	98	258068	50.014	ug/l	0.00
Spiked Amount	50.000	Range	58 - 134	Recovery	=	100.020%
62) 4-Bromofluorobenzene	12.570	95	74235	44.824	ug/l	0.00
Spiked Amount	50.000	Range	30 - 143	Recovery	=	89.640%
Target Compounds						
					Qvalue	
2) Dichlorodifluoromethane	1.847	85	53	Below Cal	#	43
3) Chloromethane	2.147	50	341	Below Cal	#	39
13) Acrolein	3.771	56	139	1.018	ug/l #	63
16) Acetone	4.041	43	1563	Below Cal	#	43
20) Methylene Chloride	4.806	84	4786	Below Cal	#	96
31) Cyclohexane	7.876	56	3033	1.459	ug/l #	28
36) 1,1-Dichloropropene	7.876	75	7986	4.080	ug/l #	40
38) Carbon Tetrachloride	7.876	117	9866	4.834	ug/l #	18
49) 1,4-Dioxane	9.570	88	57	5.599	ug/l #	61
76) 1,2,3-Trichloropropane	12.570	75	38755	46.733	ug/l #	100
81) trans-1,4-Dichloro-2-b...	12.570	75	38755	88.708	ug/l #	15
-----						

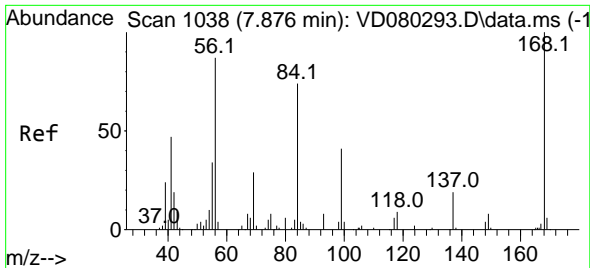
(#) = qualifier out of range (m) = manual integration (+) = signals summed

Data Path : Z:\voasrv\HPCHEM1\MSVOA\_D\Data\VD051525\  
 Data File : VD080348.D  
 Acq On : 15 May 2025 15:06  
 Operator : RP/MD  
 Sample : Q2034-07  
 Misc : 5.59G/10ml/MSVOA\_D/SOIL/A  
 ALS Vial : 12 Sample Multiplier: 1

Instrument :  
 MSVOA\_D  
 ClientSampleId :  
 L3-WC-2-VOC

Quant Time: May 16 02:58:00 2025  
 Quant Method : Z:\voasrv\HPCHEM1\MSVOA\_D\Method\82D050625S.M  
 Quant Title : SW846 8260  
 QLast Update : Wed May 07 08:57:11 2025  
 Response via : Initial Calibration

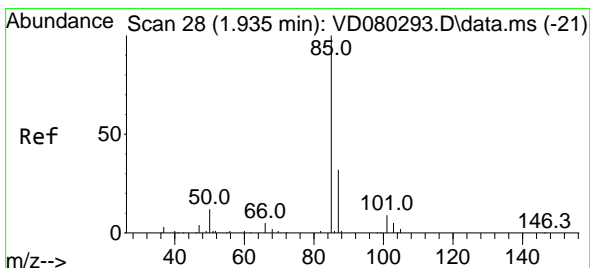
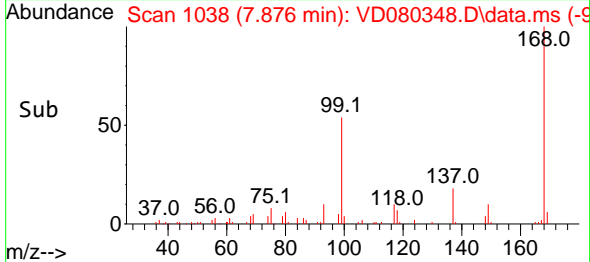
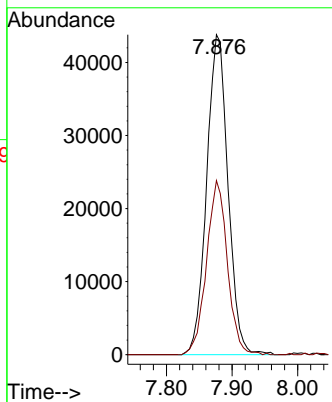
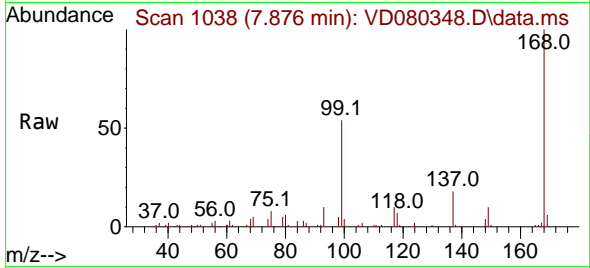




#1  
 Pentafluorobenzene  
 Concen: 50.000 ug/l  
 RT: 7.876 min Scan# 10  
 Delta R.T. 0.001 min  
 Lab File: VD080348.D  
 Acq: 15 May 2025 15:06

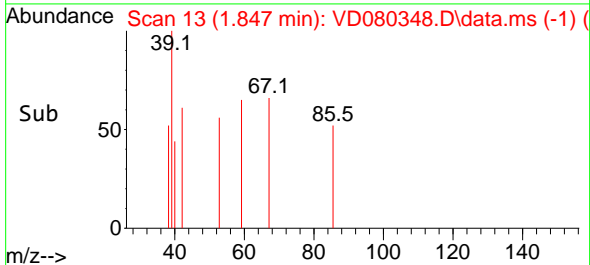
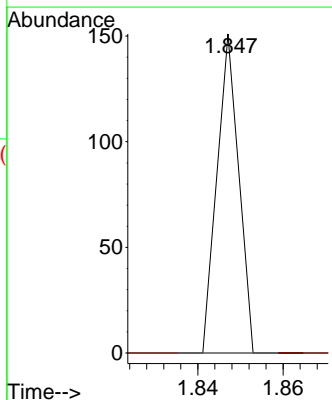
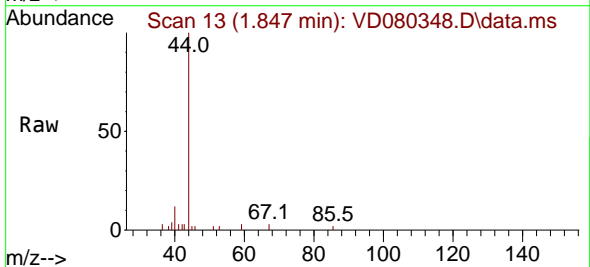
Instrument :  
 MSVOA\_D  
 ClientSampleId :  
 L3-WC-2-VOC

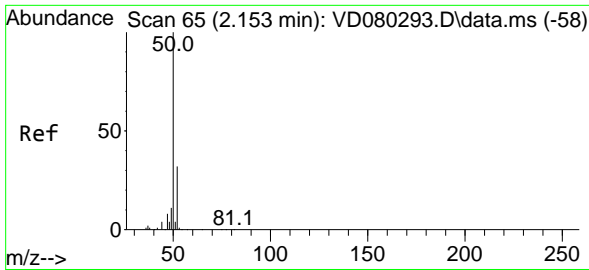
Tgt Ion:168 Resp: 98926  
 Ion Ratio Lower Upper  
 168 100  
 99 54.4 46.0 69.0



#2  
 Dichlorodifluoromethane  
 Concen: Below Cal  
 RT: 1.847 min Scan# 13  
 Delta R.T. -0.087 min  
 Lab File: VD080348.D  
 Acq: 15 May 2025 15:06

Tgt Ion: 85 Resp: 53  
 Ion Ratio Lower Upper  
 85 100  
 87 0.0 16.1 48.2#

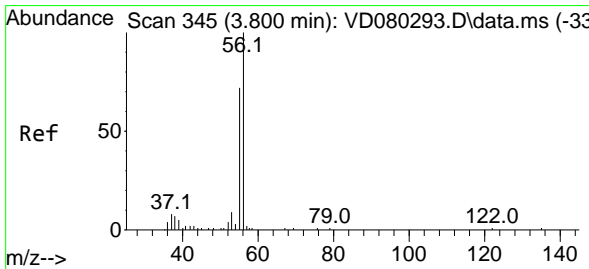
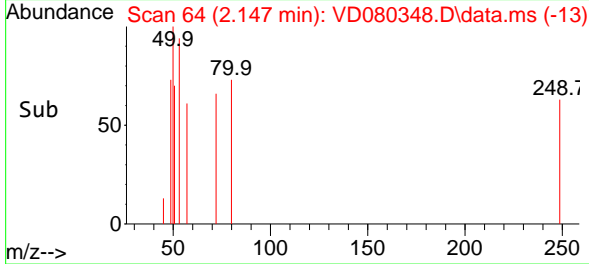
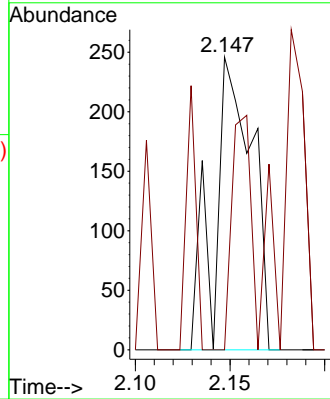
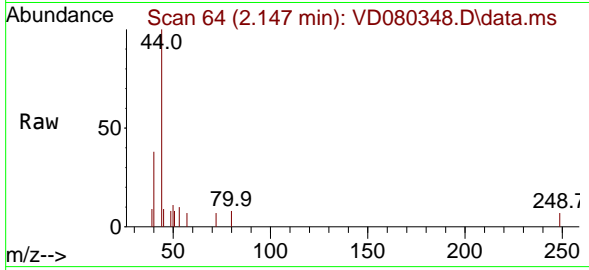




#3  
 Chloromethane  
 Concen: Below Cal  
 RT: 2.147 min Scan# 64  
 Delta R.T. 0.001 min  
 Lab File: VD080348.D  
 Acq: 15 May 2025 15:06

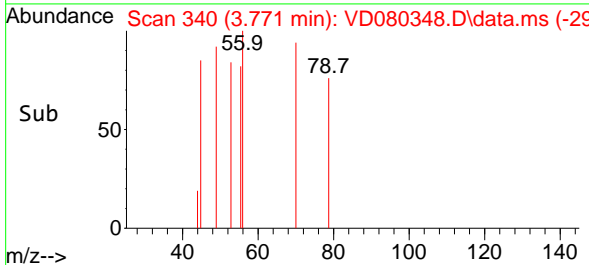
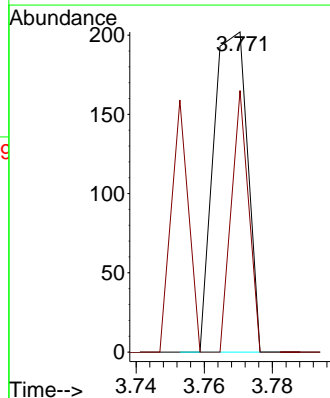
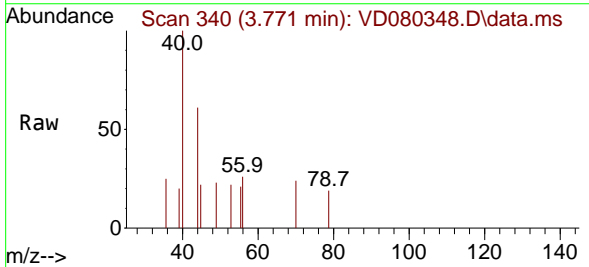
Instrument :  
 MSVOA\_D  
 ClientSampleId :  
 L3-WC-2-VOC

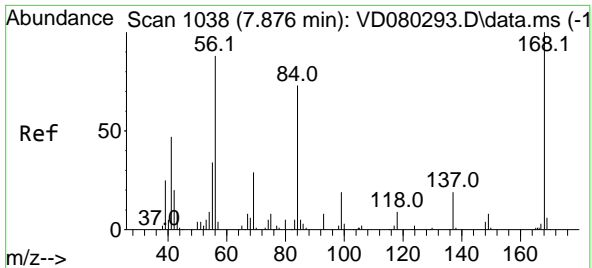
Tgt Ion: 50 Resp: 341  
 Ion Ratio Lower Upper  
 50 100  
 52 0.0 28.8 43.2#



#13  
 Acrolein  
 Concen: 1.018 ug/l  
 RT: 3.771 min Scan# 340  
 Delta R.T. -0.022 min  
 Lab File: VD080348.D  
 Acq: 15 May 2025 15:06

Tgt Ion: 56 Resp: 139  
 Ion Ratio Lower Upper  
 56 100  
 55 41.7 58.2 87.2#

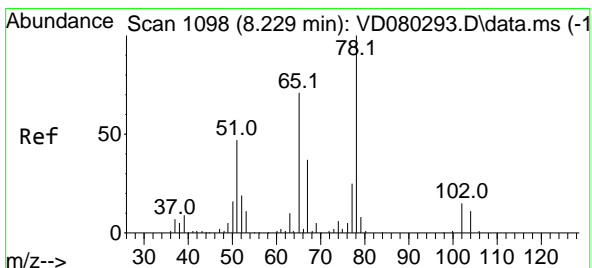
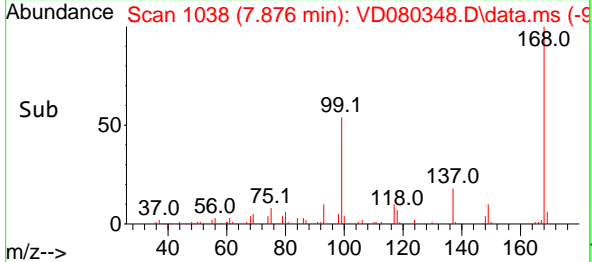
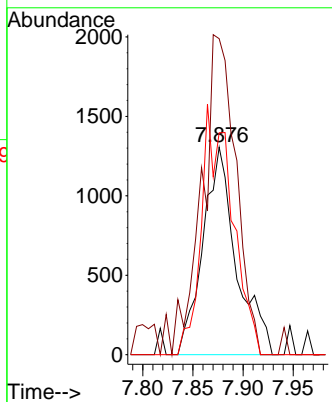
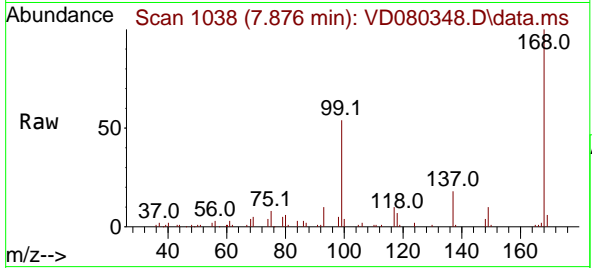




#31  
 Cyclohexane  
 Concen: 1.459 ug/l  
 RT: 7.876 min Scan# 1038  
 Delta R.T. -0.005 min  
 Lab File: VD080348.D  
 Acq: 15 May 2025 15:06

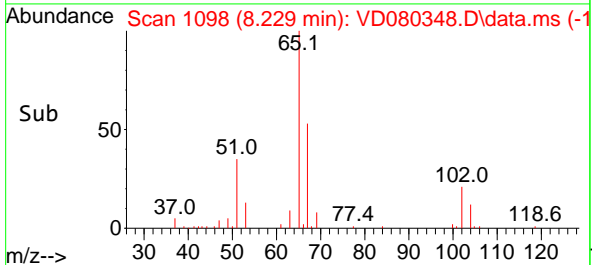
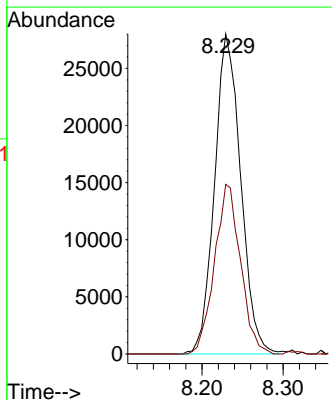
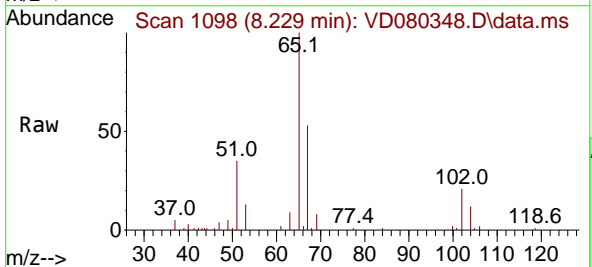
Instrument : MSVOA\_D  
 ClientSampleId : L3-WC-2-VOC

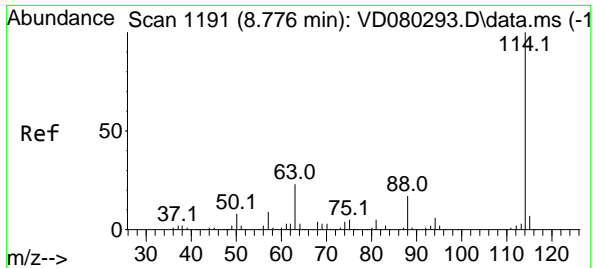
Tgt Ion	Resp	Lower	Upper
56	100		
69	152.3	27.3	40.9#
84	107.0	70.2	105.4#



#33  
 1,2-Dichloroethane-d4  
 Concen: 49.056 ug/l  
 RT: 8.229 min Scan# 1098  
 Delta R.T. 0.001 min  
 Lab File: VD080348.D  
 Acq: 15 May 2025 15:06

Tgt Ion	Resp	Lower	Upper
65	100		
67	52.5	0.0	109.2



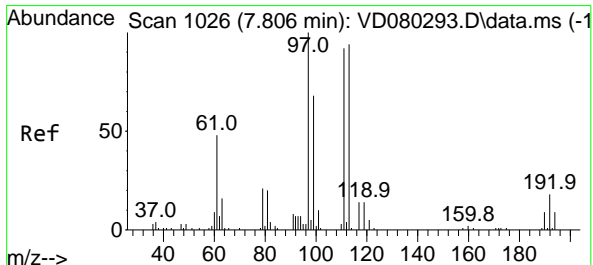
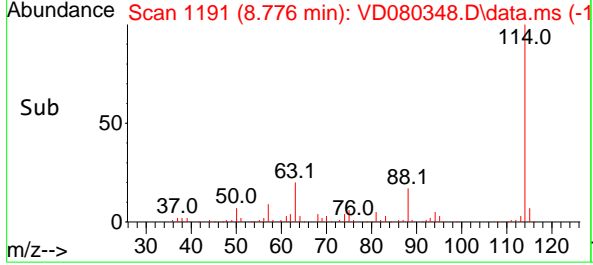
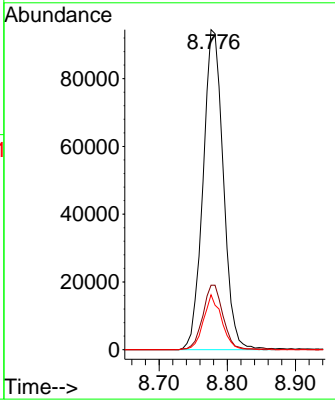
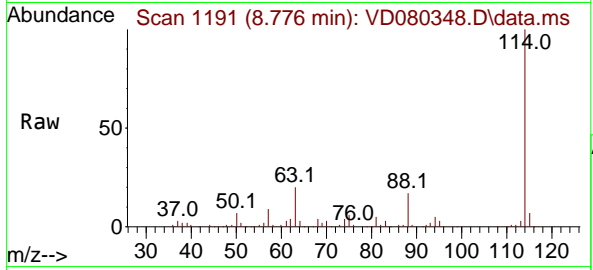


#34  
 1,4-Difluorobenzene  
 Concen: 50.000 ug/l  
 RT: 8.776 min Scan# 1191  
 Delta R.T. 0.001 min  
 Lab File: VD080348.D  
 Acq: 15 May 2025 15:06

Instrument : MSVOA\_D  
 ClientSampleId : L3-WC-2-VOC

Tgt Ion:114 Resp: 195390

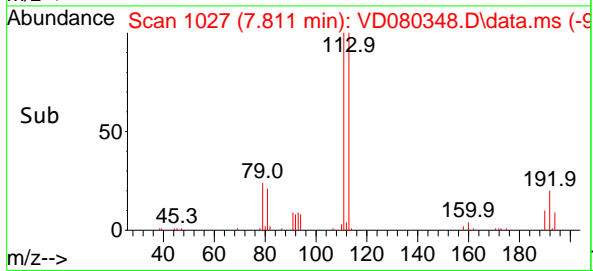
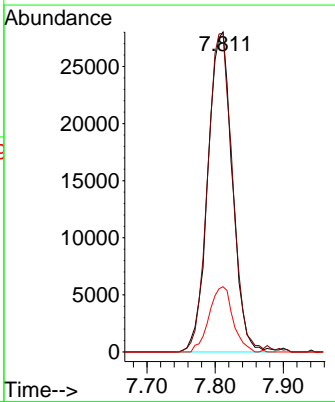
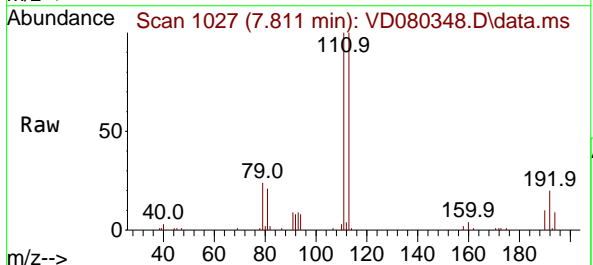
Ion	Ratio	Lower	Upper
114	100		
63	20.2	0.0	38.8
88	17.2	0.0	30.6

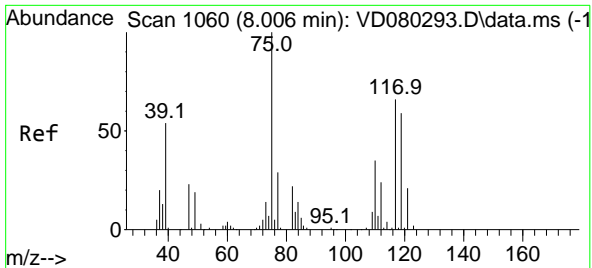


#35  
 Dibromofluoromethane  
 Concen: 53.436 ug/l  
 RT: 7.811 min Scan# 1027  
 Delta R.T. 0.006 min  
 Lab File: VD080348.D  
 Acq: 15 May 2025 15:06

Tgt Ion:113 Resp: 69978

Ion	Ratio	Lower	Upper
113	100		
111	101.4	82.5	123.7
192	19.8	16.6	25.0

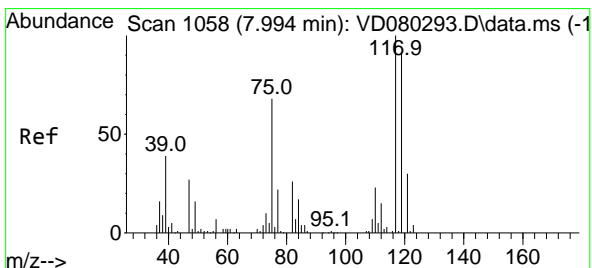
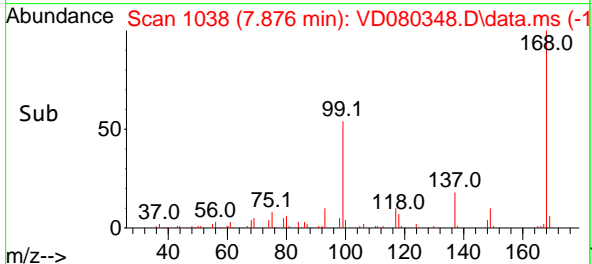
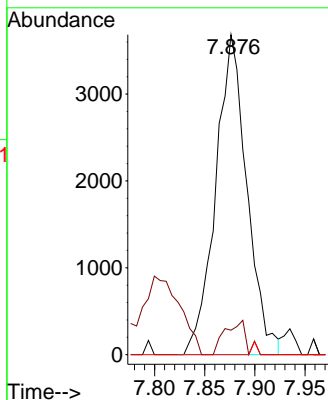
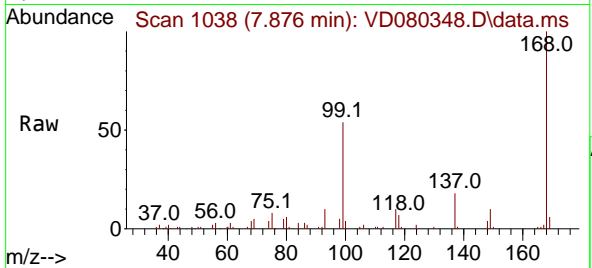




#36  
 1,1-Dichloropropene  
 Concen: 4.080 ug/l  
 RT: 7.876 min Scan# 1038  
 Delta R.T. -0.129 min  
 Lab File: VD080348.D  
 Acq: 15 May 2025 15:06

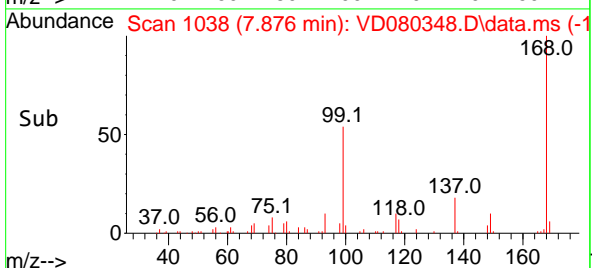
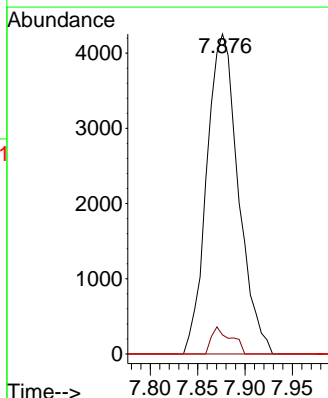
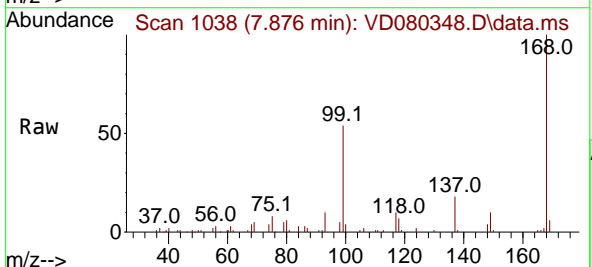
Instrument : MSVOA\_D  
 ClientSampleId : L3-WC-2-VOC

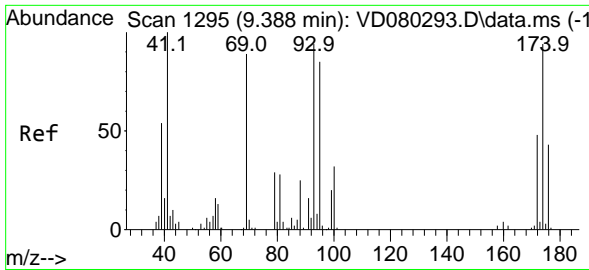
Tgt Ion	Resp	Lower	Upper
75	7986		
75	100		
110	0.0	18.4	55.0#
77	0.0	25.6	38.4#



#38  
 Carbon Tetrachloride  
 Concen: 4.834 ug/l  
 RT: 7.876 min Scan# 1038  
 Delta R.T. -0.111 min  
 Lab File: VD080348.D  
 Acq: 15 May 2025 15:06

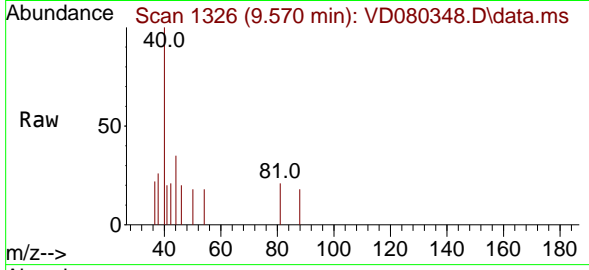
Tgt Ion	Resp	Lower	Upper
117	9866		
117	100		
119	5.9	73.4	110.0#
121	0.0	24.5	36.7#



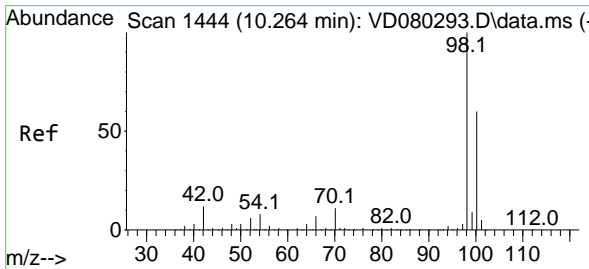
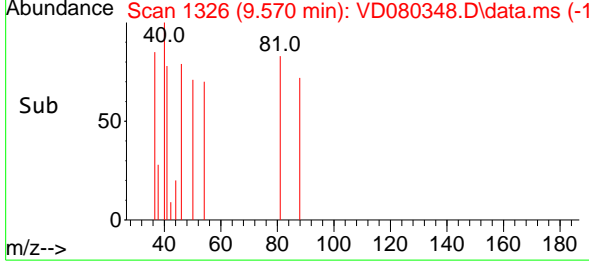
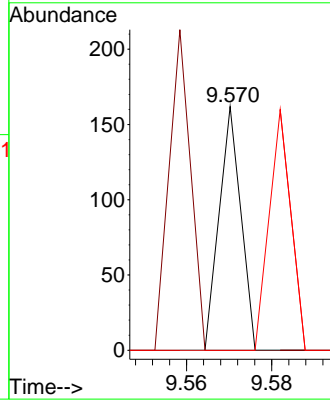


#49  
 1,4-Dioxane  
 Concen: 5.599 ug/l  
 RT: 9.570 min Scan# 11  
 Delta R.T. 0.183 min  
 Lab File: VD080348.D  
 Acq: 15 May 2025 15:06

Instrument :  
 MSVOA\_D  
 ClientSampleId :  
 L3-WC-2-VOC

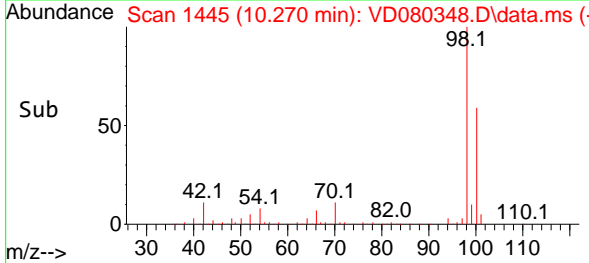
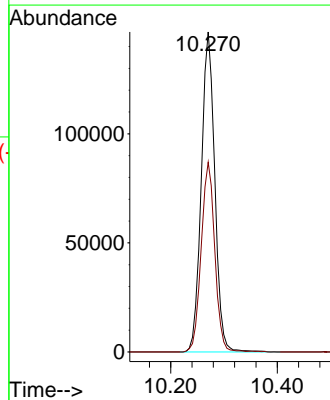
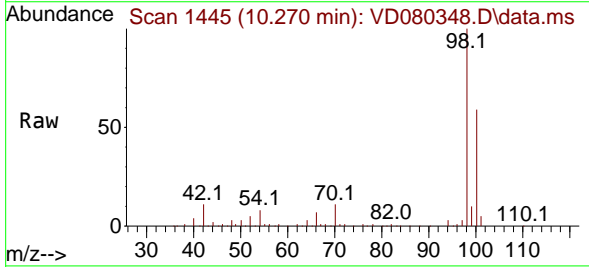


Tgt Ion: 88 Resp: 57  
 Ion Ratio Lower Upper  
 88 100  
 43 0.0 29.1 43.7#  
 58 98.2 59.9 89.9#

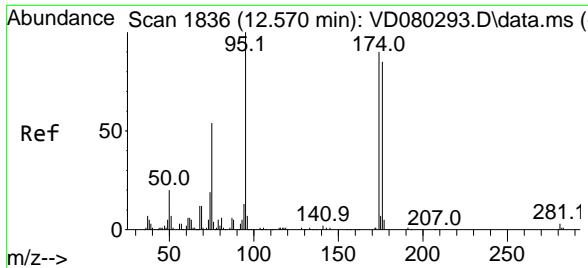


#50  
 Toluene-d8  
 Concen: 50.014 ug/l  
 RT: 10.270 min Scan# 1445  
 Delta R.T. 0.001 min  
 Lab File: VD080348.D  
 Acq: 15 May 2025 15:06

Tgt Ion: 98 Resp: 258068  
 Ion Ratio Lower Upper  
 98 100  
 100 59.6 50.2 75.4





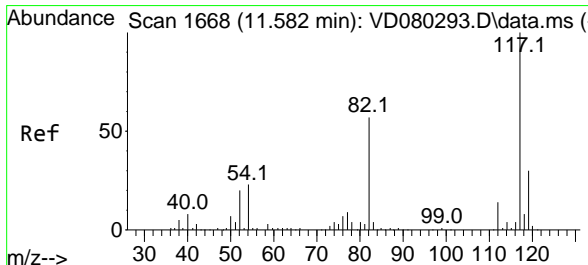
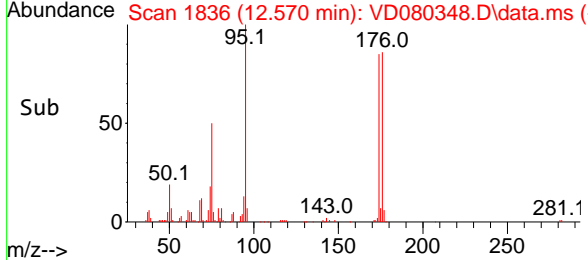
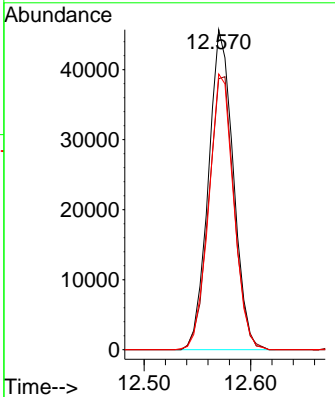
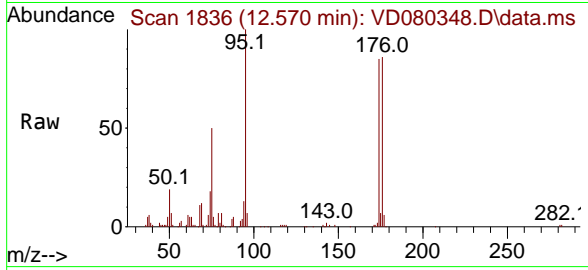


#62  
 4-Bromofluorobenzene  
 Concen: 44.824 ug/l  
 RT: 12.570 min Scan# 1836  
 Delta R.T. 0.001 min  
 Lab File: VD080348.D  
 Acq: 15 May 2025 15:06

Instrument : MSVOA\_D  
 ClientSampleId : L3-WC-2-VOC

Tgt Ion: 95 Resp: 74235

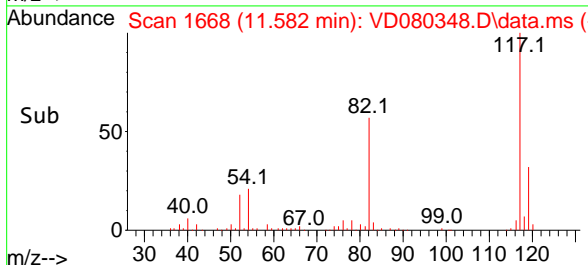
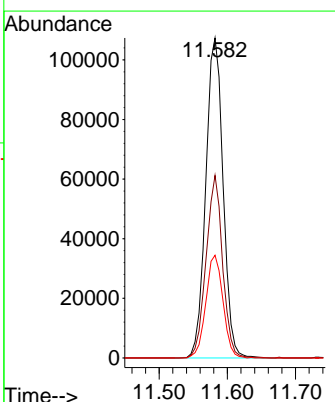
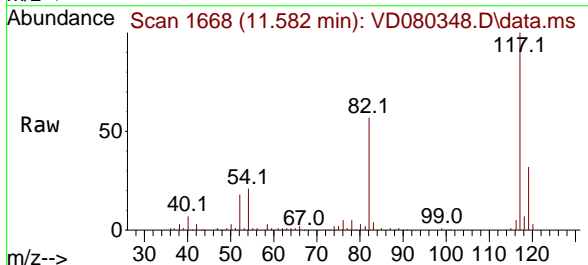
Ion	Ratio	Lower	Upper
95	100		
174	87.1	0.0	173.4
176	85.9	0.0	166.6

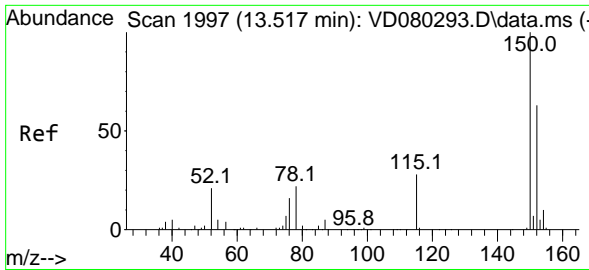


#63  
 Chlorobenzene-d5  
 Concen: 50.000 ug/l  
 RT: 11.582 min Scan# 1668  
 Delta R.T. 0.001 min  
 Lab File: VD080348.D  
 Acq: 15 May 2025 15:06

Tgt Ion: 117 Resp: 189607

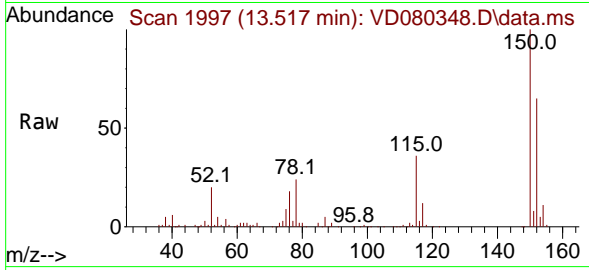
Ion	Ratio	Lower	Upper
117	100		
82	57.0	45.8	68.6
119	32.1	26.2	39.2



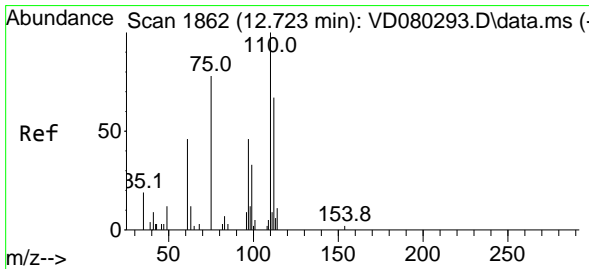
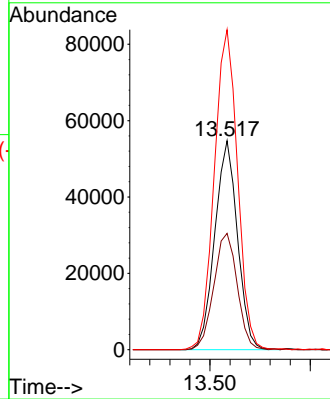
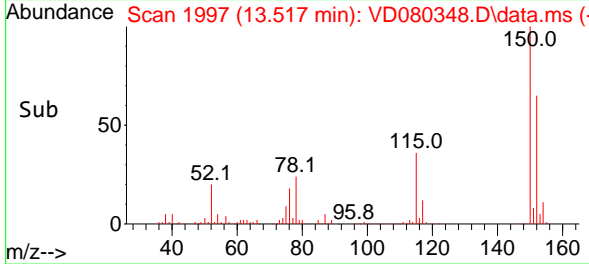


#72  
 1,4-Dichlorobenzene-d4  
 Concen: 50.000 ug/l  
 RT: 13.517 min Scan# 1997  
 Delta R.T. 0.001 min  
 Lab File: VD080348.D  
 Acq: 15 May 2025 15:06

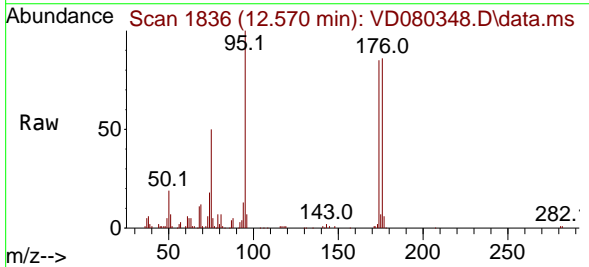
Instrument : MSVOA\_D  
 ClientSampleId : L3-WC-2-VOC



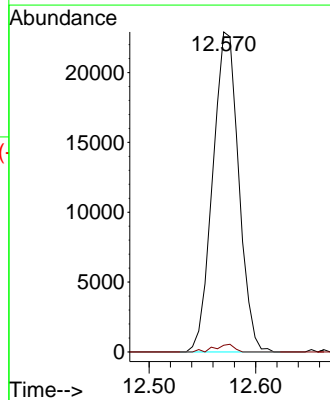
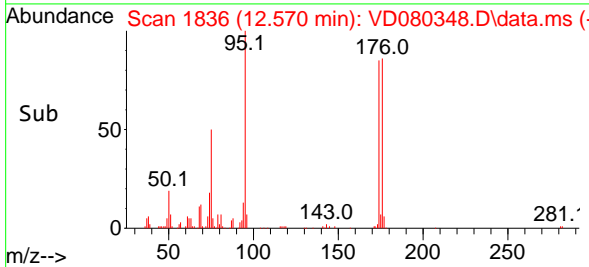
Tgt Ion:152 Resp: 85924  
 Ion Ratio Lower Upper  
 152 100  
 115 57.7 28.9 86.8  
 150 157.0 0.0 354.8

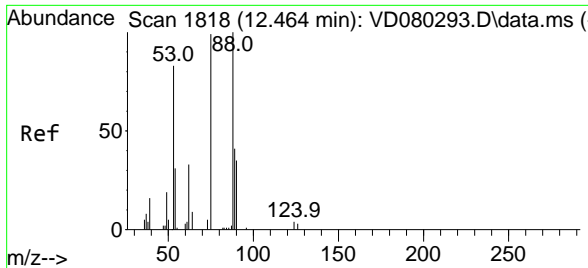


#76  
 1,2,3-Trichloropropane  
 Concen: 46.733 ug/l  
 RT: 12.570 min Scan# 1836  
 Delta R.T. -0.152 min  
 Lab File: VD080348.D  
 Acq: 15 May 2025 15:06



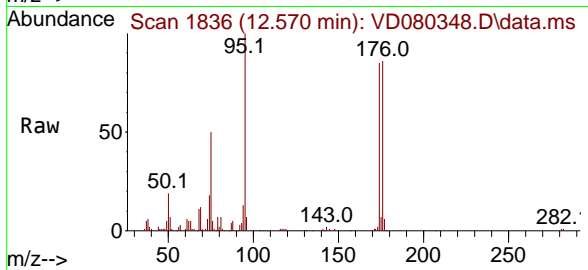
Tgt Ion: 75 Resp: 38755  
 Ion Ratio Lower Upper  
 75 100  
 77 1.8 0.0 0.0#





#81  
 trans-1,4-Dichloro-2-butene  
 Concen: 88.708 ug/l  
 RT: 12.570 min Scan# 1818  
 Delta R.T. 0.101 min  
 Lab File: VD080348.D  
 Acq: 15 May 2025 15:06

Instrument :  
 MSVOA\_D  
 ClientSampleId :  
 L3-WC-2-VOC



Tgt Ion: 75 Resp: 38755

Ion	Ratio	Lower	Upper
75	100		
53	0.3	68.7	103.1#
89	0.0	36.1	54.1#

