

Data Path : Z:\voasrv\HPCHEM1\MSVOA_D\Data\VD051525\
 Data File : VD080354.D
 Acq On : 15 May 2025 17:44
 Operator : RP/MD
 Sample : Q2014-01
 Misc : 4.48G/5.0ml/MSVOA_D/SOIL/A
 ALS Vial : 18 Sample Multiplier: 1

Instrument :
 MSVOA_D
ClientSampleId :
 MOO-25-0134

Manual Integrations
APPROVED
 Reviewed By :Mahesh Dadoda 05/16/2025
 Supervised By :Semsettin Yesilyurt 05/16/2025

Quant Time: May 16 03:00:48 2025
 Quant Method : Z:\voasrv\HPCHEM1\MSVOA_D\Method\82D050625S.M
 Quant Title : SW846 8260
 QLast Update : Wed May 07 08:57:11 2025
 Response via : Initial Calibration

Compound	R.T.	QIon	Response	Conc	Units	Dev(Min)
Internal Standards						
1) Pentafluorobenzene	7.876	168	92442	50.000	ug/l	0.00
34) 1,4-Difluorobenzene	8.782	114	181259	50.000	ug/l	0.00
63) Chlorobenzene-d5	11.582	117	169362	50.000	ug/l	0.00
72) 1,4-Dichlorobenzene-d4	13.517	152	86392	50.000	ug/l	0.00
System Monitoring Compounds						
33) 1,2-Dichloroethane-d4	8.229	65	55550	46.469	ug/l	0.00
Spiked Amount	50.000	Range	50 - 163	Recovery	=	92.940%
35) Dibromofluoromethane	7.805	113	62386	51.352	ug/l	0.00
Spiked Amount	50.000	Range	54 - 147	Recovery	=	102.700%
50) Toluene-d8	10.270	98	230955	48.249	ug/l	0.00
Spiked Amount	50.000	Range	58 - 134	Recovery	=	96.500%
62) 4-Bromofluorobenzene	12.570	95	67074	43.657	ug/l	0.00
Spiked Amount	50.000	Range	30 - 143	Recovery	=	87.320%
Target Compounds						
11) Tert butyl alcohol	5.070	59	6944m	95.726	ug/l	
16) Acetone	4.023	43	79989	438.261	ug/l	100
17) Carbon Disulfide	4.270	76	19702	5.069	ug/l #	94
18) Methyl Acetate	4.564	43	4834	6.249	ug/l #	77
25) 2-Butanone	7.088	43	10556	32.093	ug/l	91
40) Benzene	8.252	78	8768	1.541	ug/l	92
52) Toluene	10.335	92	17893	5.221	ug/l	99
67) Ethyl Benzene	11.682	91	7983	1.249	ug/l	96
68) m/p-Xylenes	11.788	106	12081	4.869	ug/l	95
69) o-Xylene	12.117	106	5338	2.354	ug/l	96
84) 1,2,4-Trimethylbenzene	13.211	105	18017	3.684	ug/l	99
86) p-Isopropyltoluene	13.458	119	80663	15.604	ug/l	99

(#) = qualifier out of range (m) = manual integration (+) = signals summed

Data Path : Z:\voasrv\HPCHEM1\MSVOA_D\Data\VD051525\
 Data File : VD080354.D
 Acq On : 15 May 2025 17:44
 Operator : RP/MD
 Sample : Q2014-01
 Misc : 4.48G/5.0ml/MSVOA_D/SOIL/A
 ALS Vial : 18 Sample Multiplier: 1

Instrument :

MSVOA_D

ClientSampleId :

MOO-25-0134

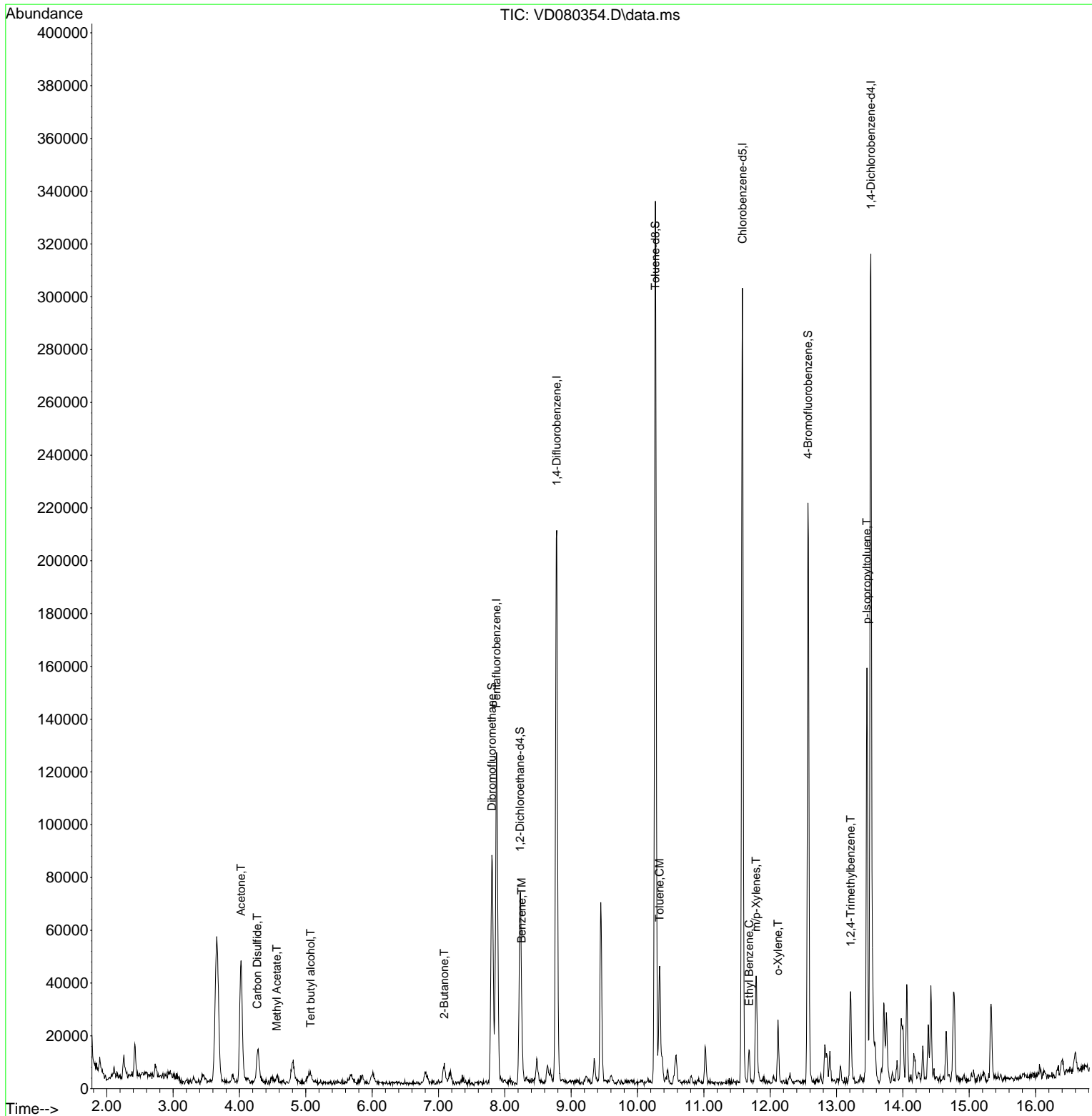
Manual Integrations

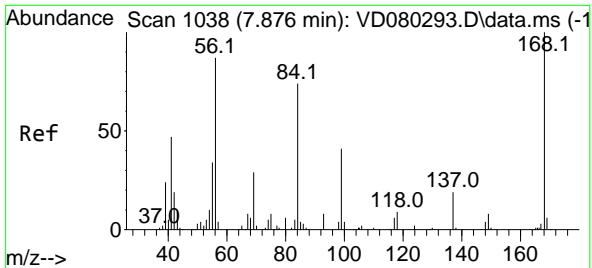
APPROVED

Reviewed By :Mahesh Dadoda 05/16/2025

Supervised By :Semsettin Yesilyurt 05/16/2025

Quant Time: May 16 03:00:48 2025
 Quant Method : Z:\voasrv\HPCHEM1\MSVOA_D\Method\82D050625S.M
 Quant Title : SW846 8260
 QLast Update : Wed May 07 08:57:11 2025
 Response via : Initial Calibration





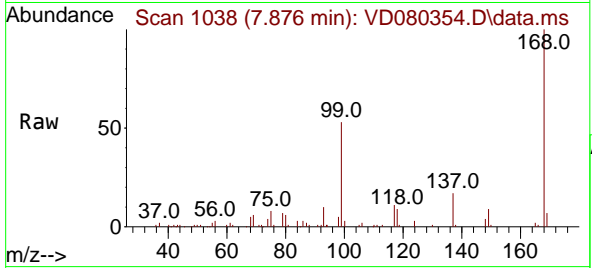
#1
 Pentafluorobenzene
 Concen: 50.000 ug/l
 RT: 7.876 min Scan# 1038
 Delta R.T. 0.001 min
 Lab File: VD080354.D
 Acq: 15 May 2025 17:44

Instrument :

MSVOA_D

ClientSampleID :

MOO-25-0134

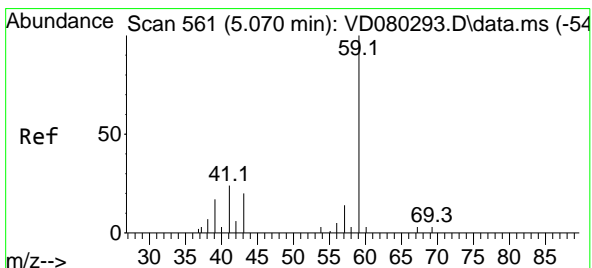
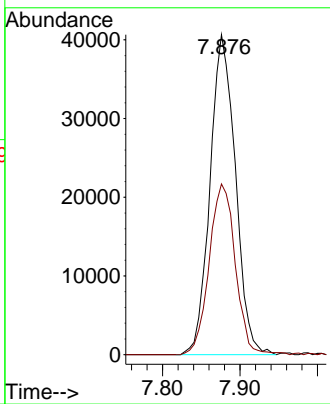
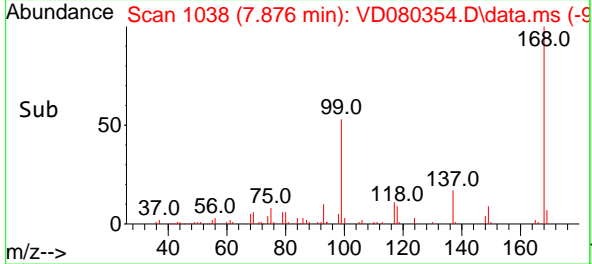


Tgt Ion:168 Resp: 9244
 Ion Ratio Lower Upper
 168 100
 99 53.3 46.0 69.0

Manual Integrations

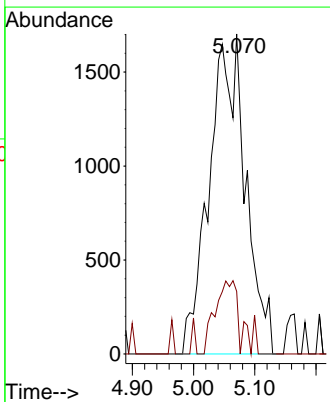
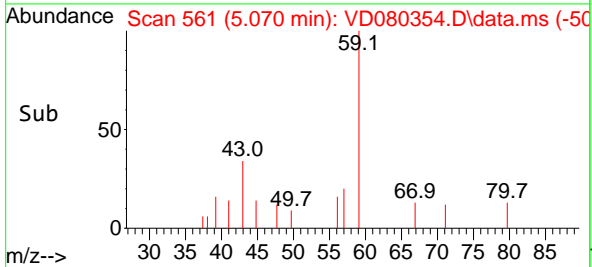
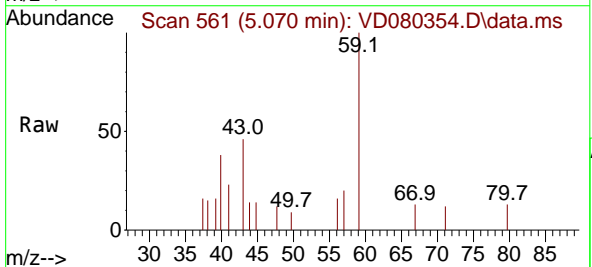
APPROVED

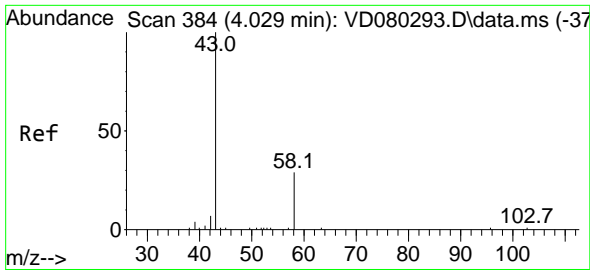
Reviewed By :Mahesh Dadoda 05/16/2025
 Supervised By :Semsettin Yesilyurt 05/16/2025



#11
 Tert butyl alcohol
 Concen: 95.726 ug/l m
 RT: 5.070 min Scan# 561
 Delta R.T. 0.012 min
 Lab File: VD080354.D
 Acq: 15 May 2025 17:44

Tgt Ion: 59 Resp: 6944
 Ion Ratio Lower Upper
 59 100
 57 15.2 4.8 7.2#





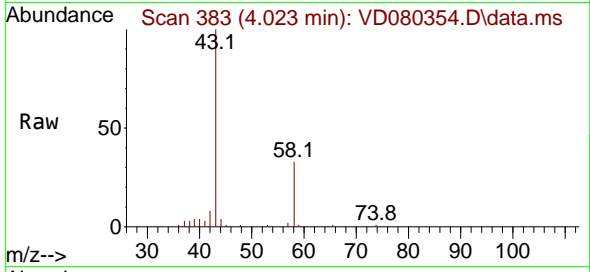
#16
 Acetone
 Concen: 438.261 ug/l
 RT: 4.023 min Scan# 383
 Delta R.T. 0.000 min
 Lab File: VD080354.D
 Acq: 15 May 2025 17:44

Instrument :

MSVOA_D

Client Sample Id :

MOO-25-0134

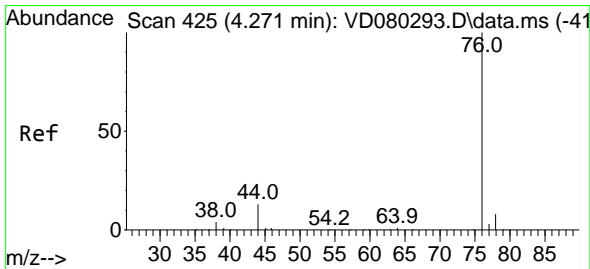
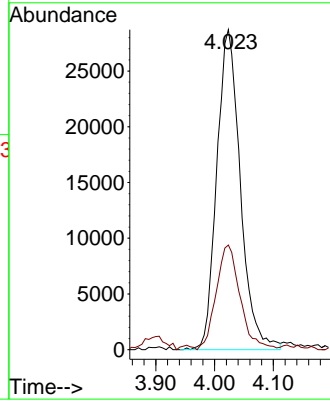
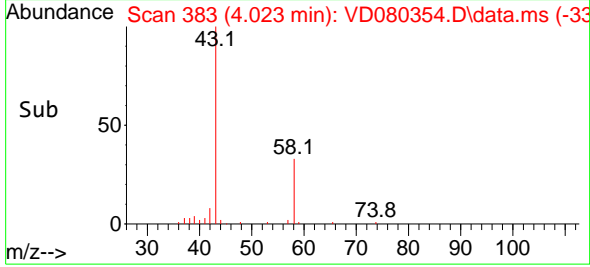


Tgt Ion: 43 Resp: 79989
 Ion Ratio Lower Upper
 43 100
 58 31.9 25.4 38.2

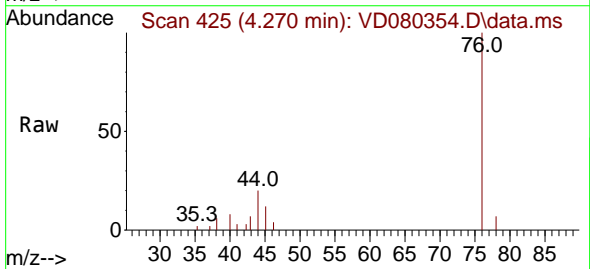
Manual Integrations

APPROVED

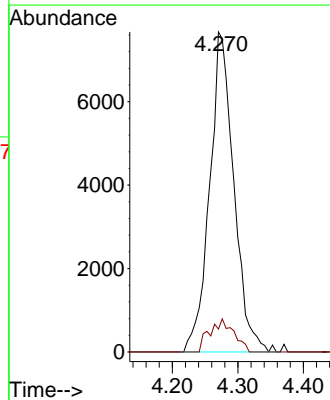
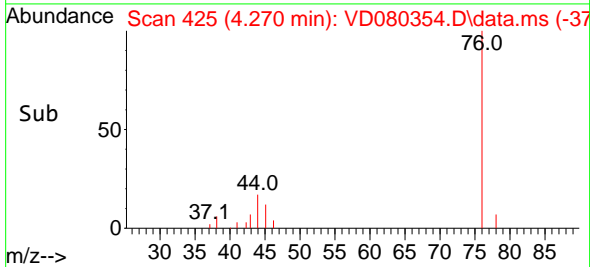
Reviewed By :Mahesh Dadoda 05/16/2025
 Supervised By :Semsettin Yesilyurt 05/16/2025

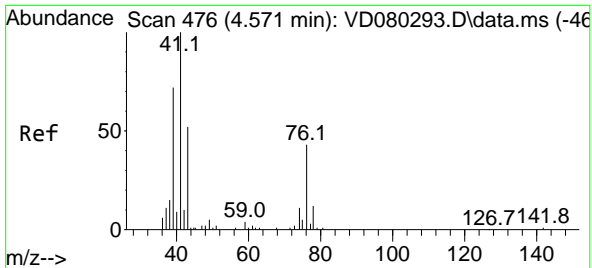


#17
 Carbon Disulfide
 Concen: 5.069 ug/l
 RT: 4.270 min Scan# 425
 Delta R.T. 0.000 min
 Lab File: VD080354.D
 Acq: 15 May 2025 17:44



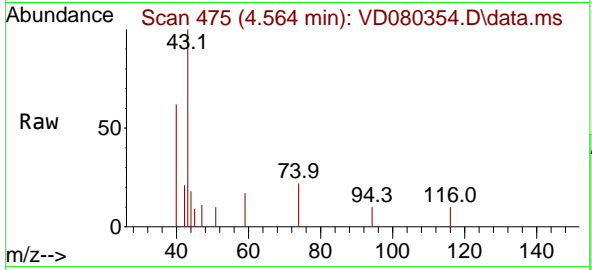
Tgt Ion: 76 Resp: 19702
 Ion Ratio Lower Upper
 76 100
 78 7.1 7.5 11.3#





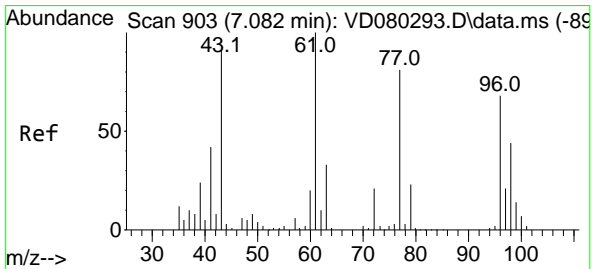
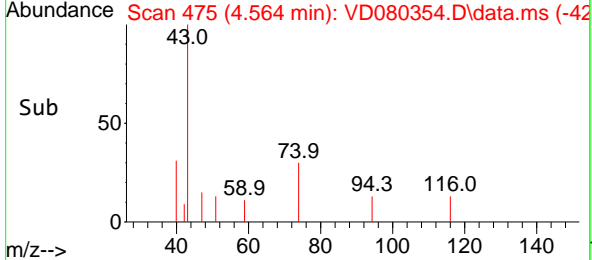
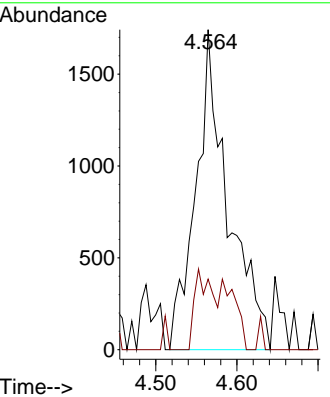
#18
 Methyl Acetate
 Concen: 6.249 ug/l
 RT: 4.564 min Scan# 41
 Delta R.T. 0.000 min
 Lab File: VD080354.D
 Acq: 15 May 2025 17:44

Instrument : MSVOA_D
 ClientSampleID : MOO-25-0134

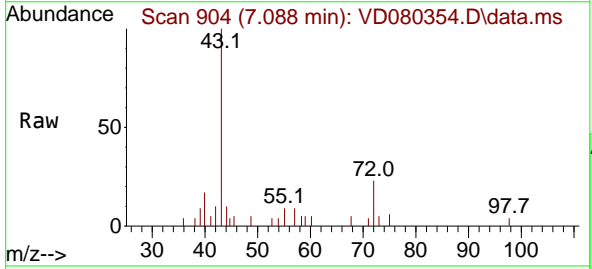


Tgt Ion: 43 Resp: 4834
 Ion Ratio Lower Upper
 43 100
 74 14.1 20.5 30.7

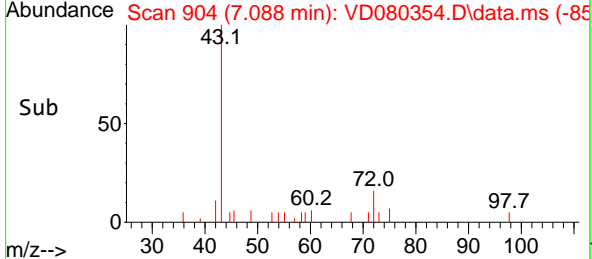
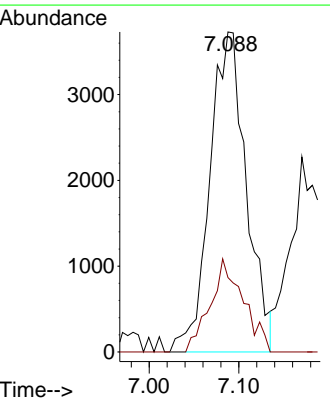
Manual Integrations
APPROVED
 Reviewed By :Mahesh Dadoda 05/16/2025
 Supervised By :Semsettin Yesilyurt 05/16/2025

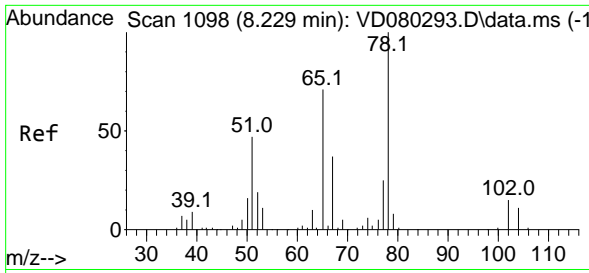


#25
 2-Butanone
 Concen: 32.093 ug/l
 RT: 7.088 min Scan# 904
 Delta R.T. 0.001 min
 Lab File: VD080354.D
 Acq: 15 May 2025 17:44



Tgt Ion: 43 Resp: 10556
 Ion Ratio Lower Upper
 43 100
 72 23.2 22.3 33.5





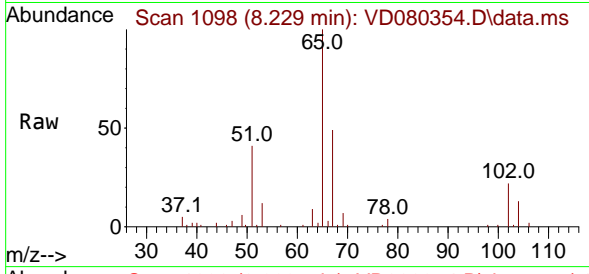
#33
 1,2-Dichloroethane-d4
 Concen: 46.469 ug/l
 RT: 8.229 min Scan# 1098
 Delta R.T. 0.001 min
 Lab File: VD080354.D
 Acq: 15 May 2025 17:44

Instrument :

MSVOA_D

ClientSampleId :

MOO-25-0134

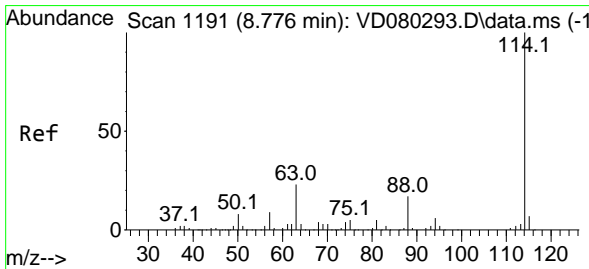
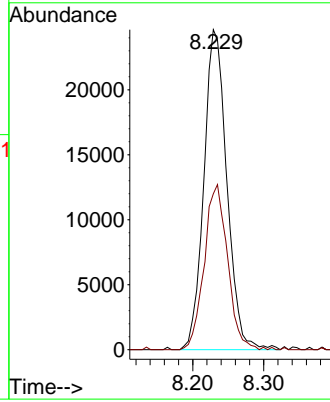
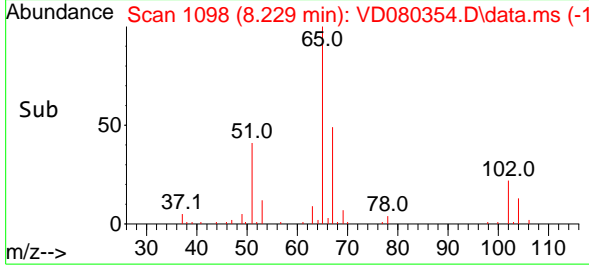


Tgt Ion: 65 Resp: 5550
 Ion Ratio Lower Upper
 65 100
 67 52.1 0.0 109.2

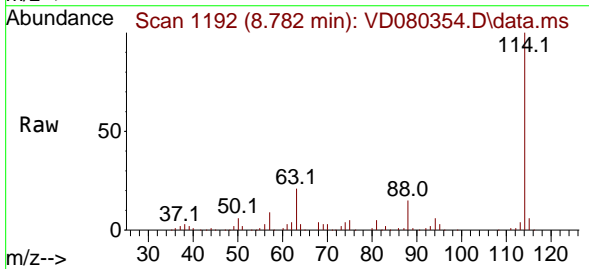
Manual Integrations

APPROVED

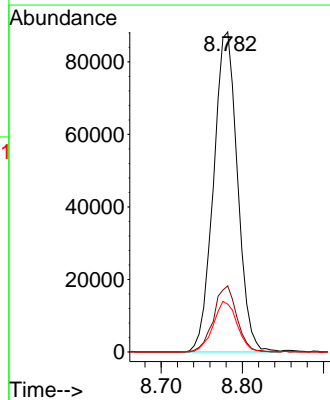
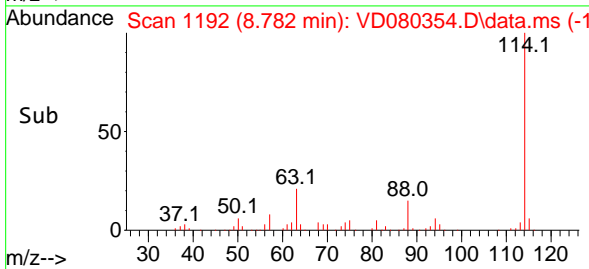
Reviewed By :Mahesh Dadoda 05/16/2025
 Supervised By :Semsettin Yesilyurt 05/16/2025

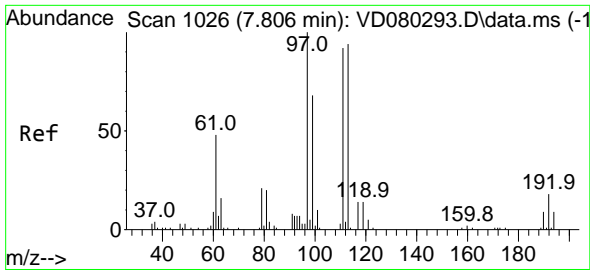


#34
 1,4-Difluorobenzene
 Concen: 50.000 ug/l
 RT: 8.782 min Scan# 1192
 Delta R.T. 0.007 min
 Lab File: VD080354.D
 Acq: 15 May 2025 17:44



Tgt Ion:114 Resp: 181259
 Ion Ratio Lower Upper
 114 100
 63 20.7 0.0 38.8
 88 15.0 0.0 30.6





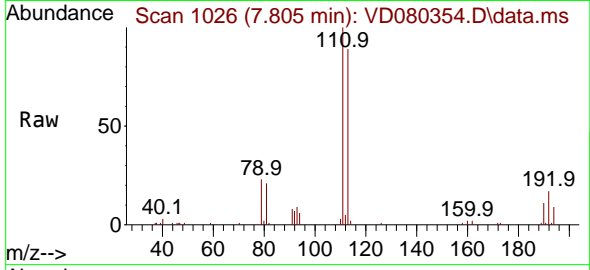
#35
 Dibromofluoromethane
 Concen: 51.352 ug/l
 RT: 7.805 min Scan# 1026
 Delta R.T. 0.000 min
 Lab File: VD080354.D
 Acq: 15 May 2025 17:44

Instrument :

MSVOA_D

Client Sample Id :

MOO-25-0134

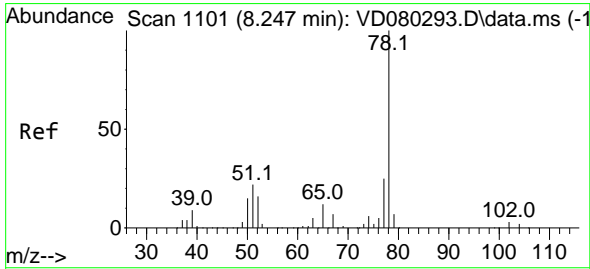
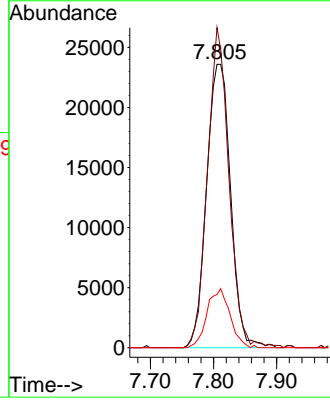
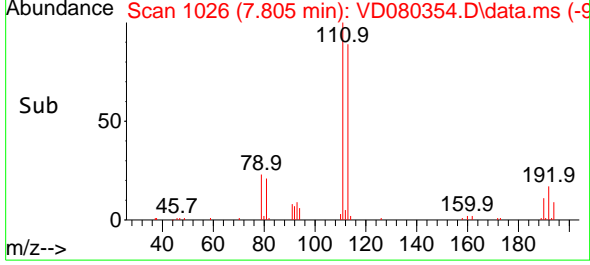


Tgt Ion: 113 Resp: 62380
 Ion Ratio Lower Upper
 113 100
 111 101.5 82.5 123.7
 192 19.9 16.6 25.0

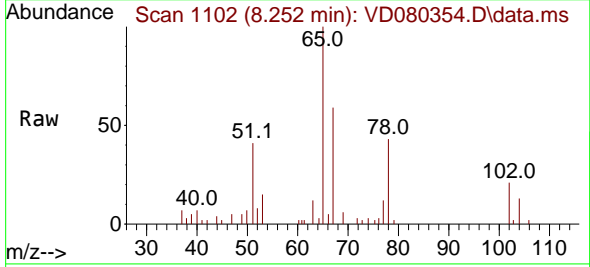
Manual Integrations

APPROVED

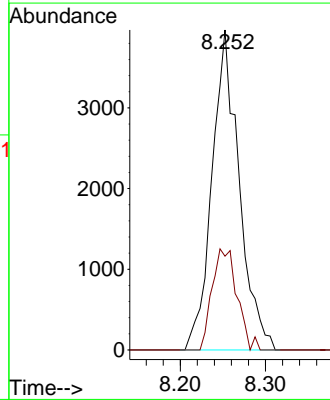
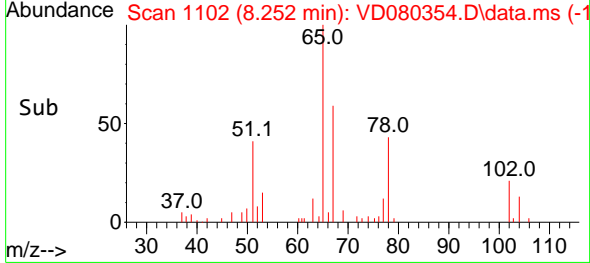
Reviewed By :Mahesh Dadoda 05/16/2025
 Supervised By :Semsettin Yesilyurt 05/16/2025

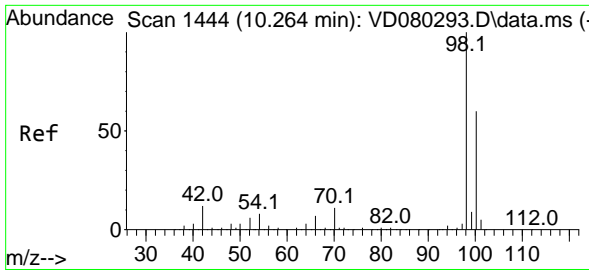


#40
 Benzene
 Concen: 1.541 ug/l
 RT: 8.252 min Scan# 1102
 Delta R.T. 0.000 min
 Lab File: VD080354.D
 Acq: 15 May 2025 17:44



Tgt Ion: 78 Resp: 8768
 Ion Ratio Lower Upper
 78 100
 77 29.3 20.2 30.4





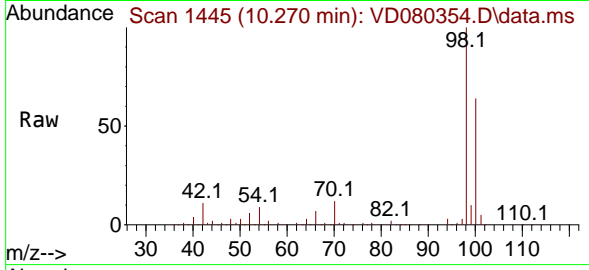
#50
 Toluene-d8
 Concen: 48.249 ug/l
 RT: 10.270 min Scan# 1444
 Delta R.T. 0.001 min
 Lab File: VD080354.D
 Acq: 15 May 2025 17:44

Instrument :

MSVOA_D

ClientSampleId :

MOO-25-0134

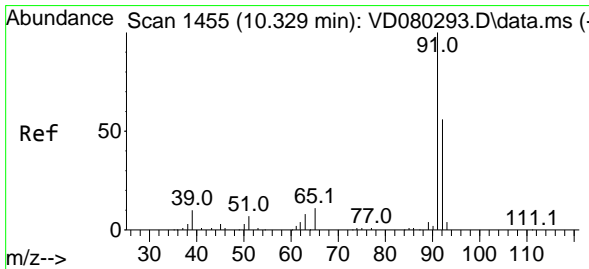
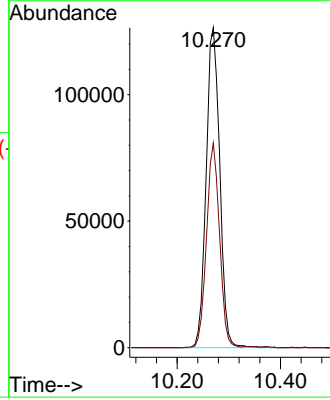
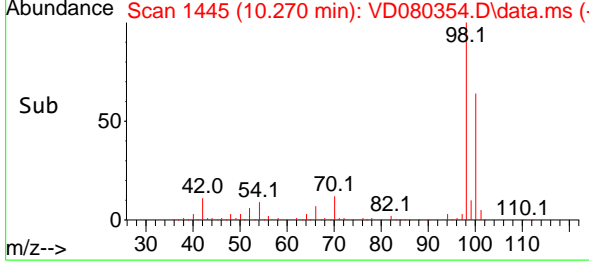


Tgt Ion: 98 Resp: 23095
 Ion Ratio Lower Upper
 98 100
 100 61.2 50.2 75.4

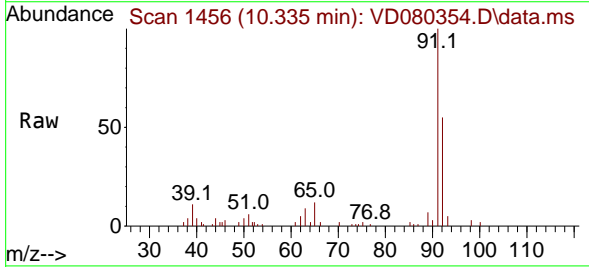
Manual Integrations

APPROVED

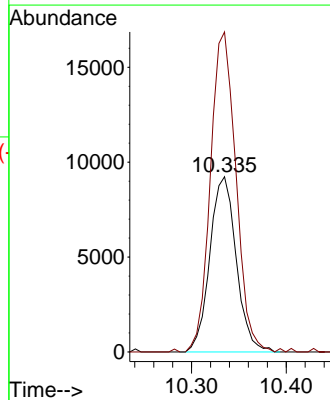
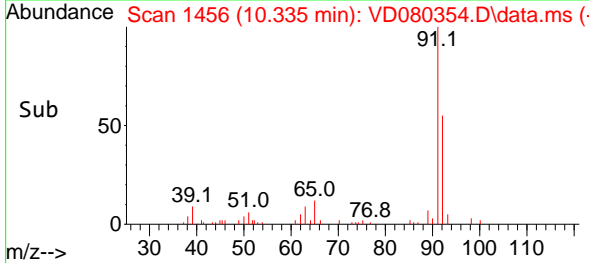
Reviewed By :Mahesh Dadoda 05/16/2025
 Supervised By :Semsettin Yesilyurt 05/16/2025

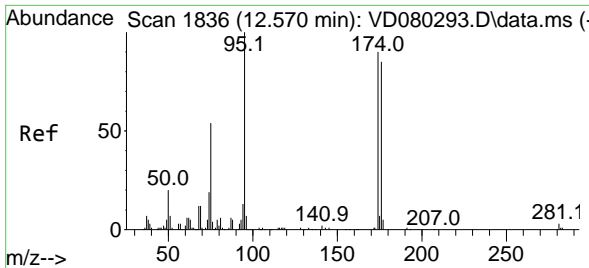


#52
 Toluene
 Concen: 5.221 ug/l
 RT: 10.335 min Scan# 1456
 Delta R.T. 0.001 min
 Lab File: VD080354.D
 Acq: 15 May 2025 17:44



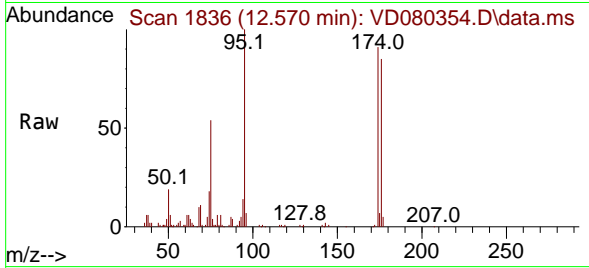
Tgt Ion: 92 Resp: 17893
 Ion Ratio Lower Upper
 92 100
 91 176.1 139.3 208.9





#62
 4-Bromofluorobenzene
 Concen: 43.657 ug/l
 RT: 12.570 min Scan# 1836
 Delta R.T. 0.001 min
 Lab File: VD080354.D
 Acq: 15 May 2025 17:44

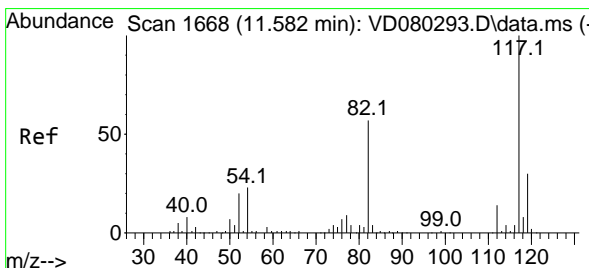
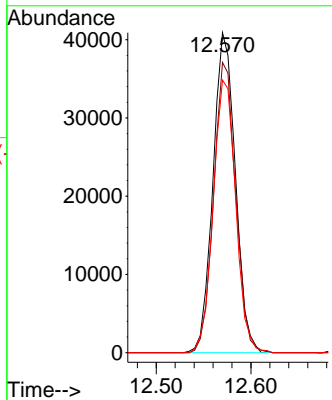
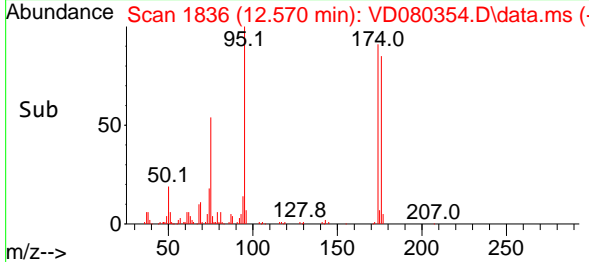
Instrument : MSVOA_D
 Client Sample Id : MOO-25-0134



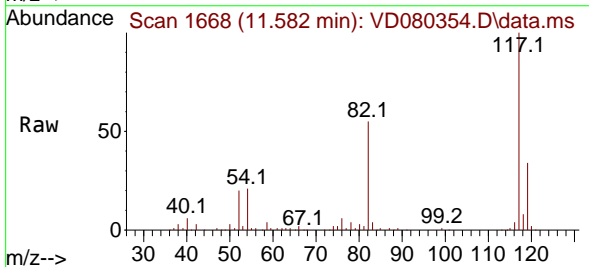
Tgt Ion: 95 Resp: 67074
 Ion Ratio Lower Upper
 95 100
 174 89.6 0.0 173.4
 176 85.8 0.0 166.6

Manual Integrations
 APPROVED

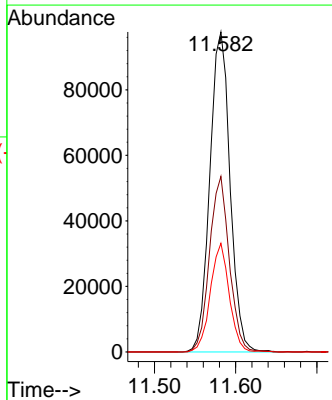
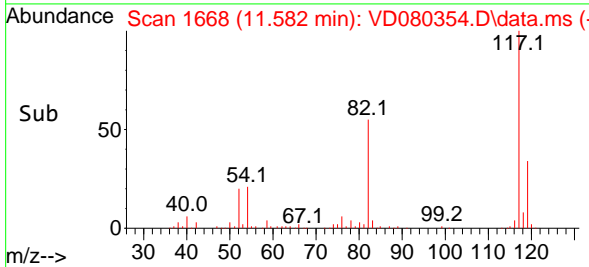
Reviewed By :Mahesh Dadoda 05/16/2025
 Supervised By :Semsettin Yesilyurt 05/16/2025

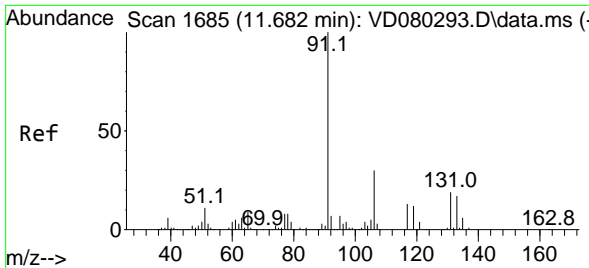


#63
 Chlorobenzene-d5
 Concen: 50.000 ug/l
 RT: 11.582 min Scan# 1668
 Delta R.T. 0.001 min
 Lab File: VD080354.D
 Acq: 15 May 2025 17:44



Tgt Ion:117 Resp: 169362
 Ion Ratio Lower Upper
 117 100
 82 54.8 45.8 68.6
 119 34.0 26.2 39.2





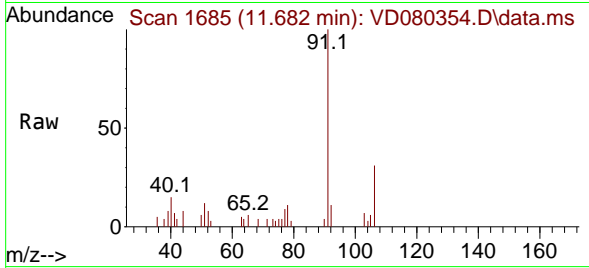
#67
 Ethyl Benzene
 Concen: 1.249 ug/l
 RT: 11.682 min Scan# 106
 Delta R.T. 0.001 min
 Lab File: VD080354.D
 Acq: 15 May 2025 17:44

Instrument :

MSVOA_D

ClientSampleId :

MOO-25-0134

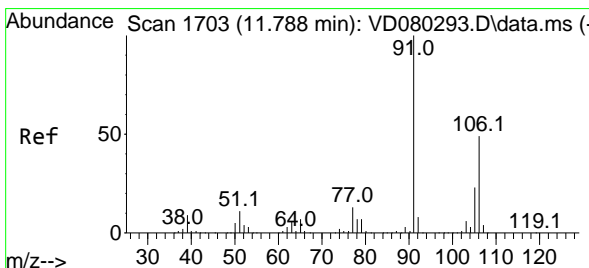
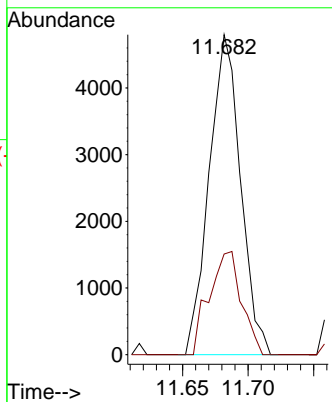
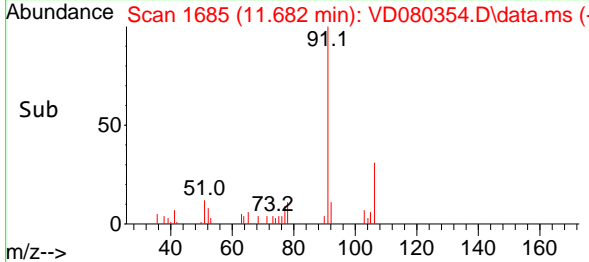


Tgt Ion: 91 Resp: 7981
 Ion Ratio Lower Upper
 91 100
 106 31.4 23.6 35.4

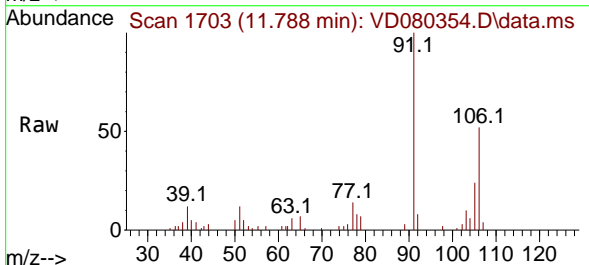
Manual Integrations

APPROVED

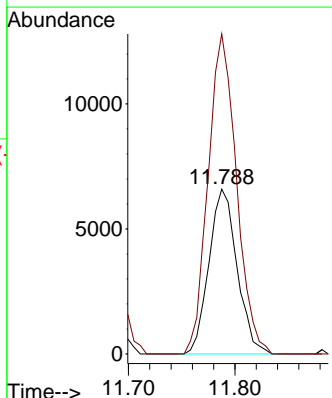
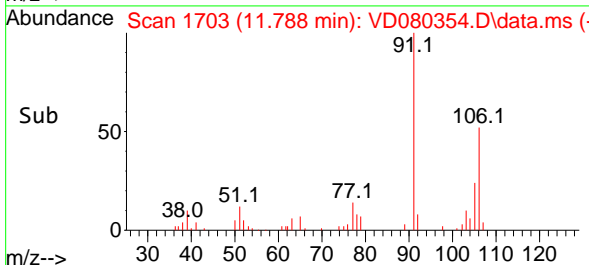
Reviewed By :Mahesh Dadoda 05/16/2025
 Supervised By :Semsettin Yesilyurt 05/16/2025

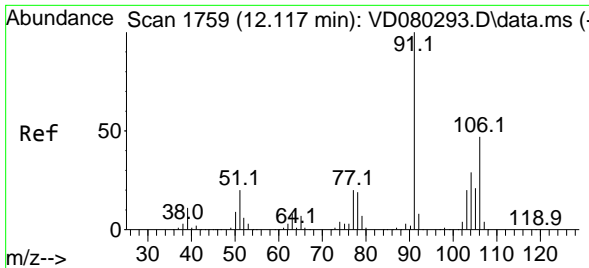


#68
 m/p-Xylenes
 Concen: 4.869 ug/l
 RT: 11.788 min Scan# 1703
 Delta R.T. -0.005 min
 Lab File: VD080354.D
 Acq: 15 May 2025 17:44



Tgt Ion:106 Resp: 12081
 Ion Ratio Lower Upper
 106 100
 91 195.7 162.6 244.0





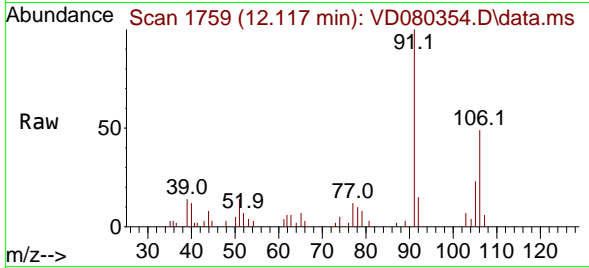
#69
 o-Xylene
 Concen: 2.354 ug/l
 RT: 12.117 min Scan# 1759
 Delta R.T. 0.001 min
 Lab File: VD080354.D
 Acq: 15 May 2025 17:44

Instrument :

MSVOA_D

ClientSampleId :

MOO-25-0134

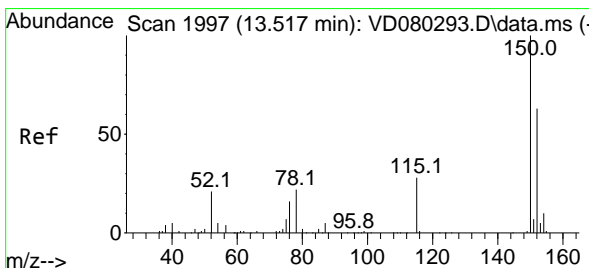
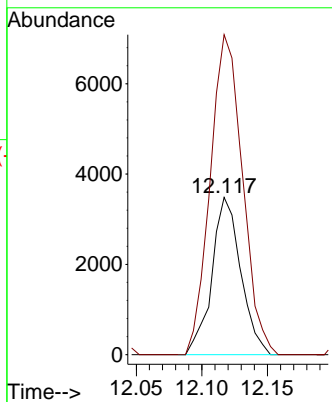
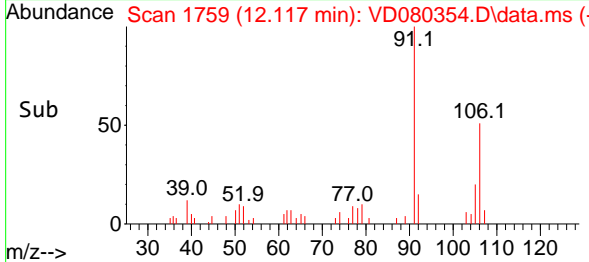


Tgt Ion:106 Resp: 5338
 Ion Ratio Lower Upper
 106 100
 91 227.6 110.5 331.5

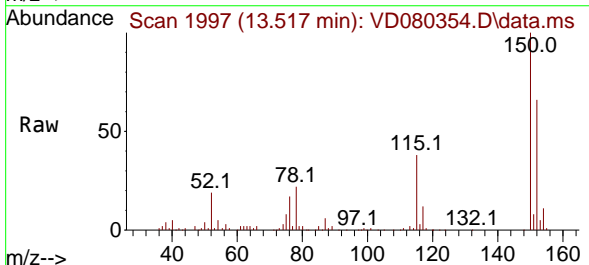
Manual Integrations

APPROVED

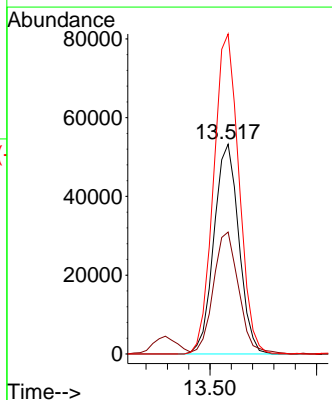
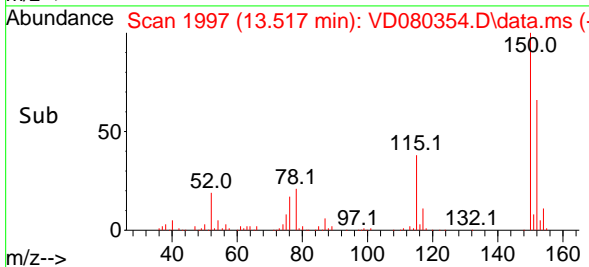
Reviewed By :Mahesh Dadoda 05/16/2025
 Supervised By :Semsettin Yesilyurt 05/16/2025

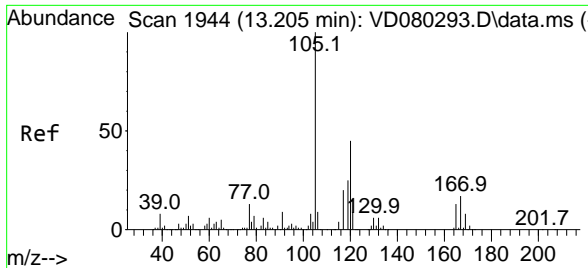


#72
 1,4-Dichlorobenzene-d4
 Concen: 50.000 ug/l
 RT: 13.517 min Scan# 1997
 Delta R.T. 0.001 min
 Lab File: VD080354.D
 Acq: 15 May 2025 17:44



Tgt Ion:152 Resp: 86392
 Ion Ratio Lower Upper
 152 100
 115 59.3 28.9 86.8
 150 155.3 0.0 354.8





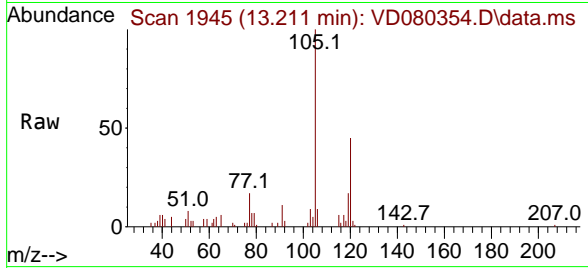
#84
 1,2,4-Trimethylbenzene
 Concen: 3.684 ug/l
 RT: 13.211 min Scan# 1945
 Delta R.T. 0.001 min
 Lab File: VD080354.D
 Acq: 15 May 2025 17:44

Instrument :

MSVOA_D

ClientSampleId :

MOO-25-0134

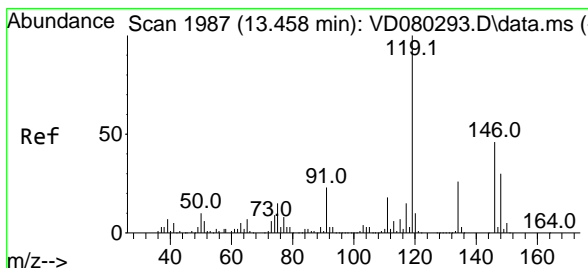
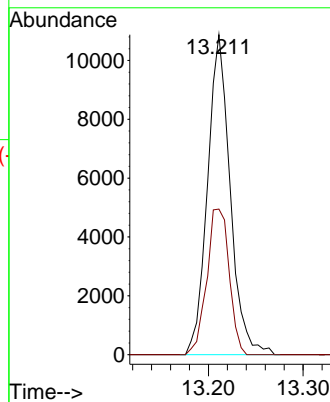
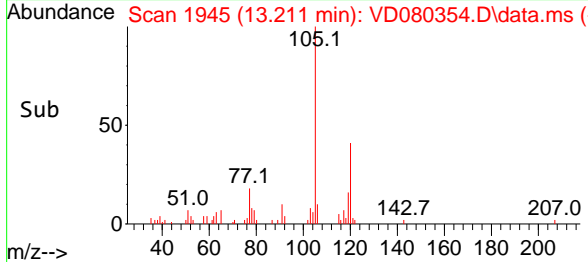


Tgt Ion:105 Resp: 1801
 Ion Ratio Lower Upper
 105 100
 120 45.0 22.8 68.4

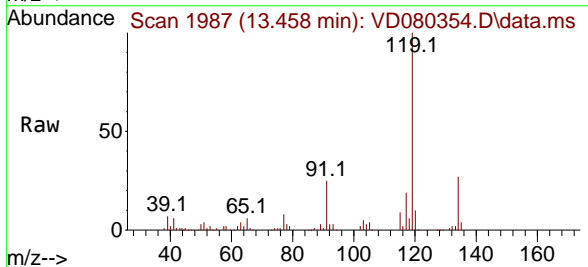
Manual Integrations

APPROVED

Reviewed By :Mahesh Dadoda 05/16/2025
 Supervised By :Semsettin Yesilyurt 05/16/2025



#86
 p-Isopropyltoluene
 Concen: 15.604 ug/l
 RT: 13.458 min Scan# 1987
 Delta R.T. 0.001 min
 Lab File: VD080354.D
 Acq: 15 May 2025 17:44



Tgt Ion:119 Resp: 80663
 Ion Ratio Lower Upper
 119 100
 134 26.9 13.1 39.1
 91 24.7 12.2 36.4

