

Data Path : Z:\voasrv\HPCHEM1\MSVOA\_D\Data\VD052122\  
 Data File : VD073241.D  
 Acq On : 21 May 2022 20:50  
 Operator : VA/SY  
 Sample : M2920-02  
 Misc : 4.37G/5.00ml/MSVOA\_D/SOIL  
 ALS Vial : 17 Sample Multiplier: 1

Instrument :  
 MSVOA\_D  
 ClientSampleId :  
 P015-SS007-0006-01

Quant Time: May 22 01:34:22 2022  
 Quant Method : Z:\voasrv\HPCHEM1\MSVOA\_D\Method\82D051922S.M  
 Quant Title : SW846 8260  
 QLast Update : Thu May 19 15:13:42 2022  
 Response via : Initial Calibration

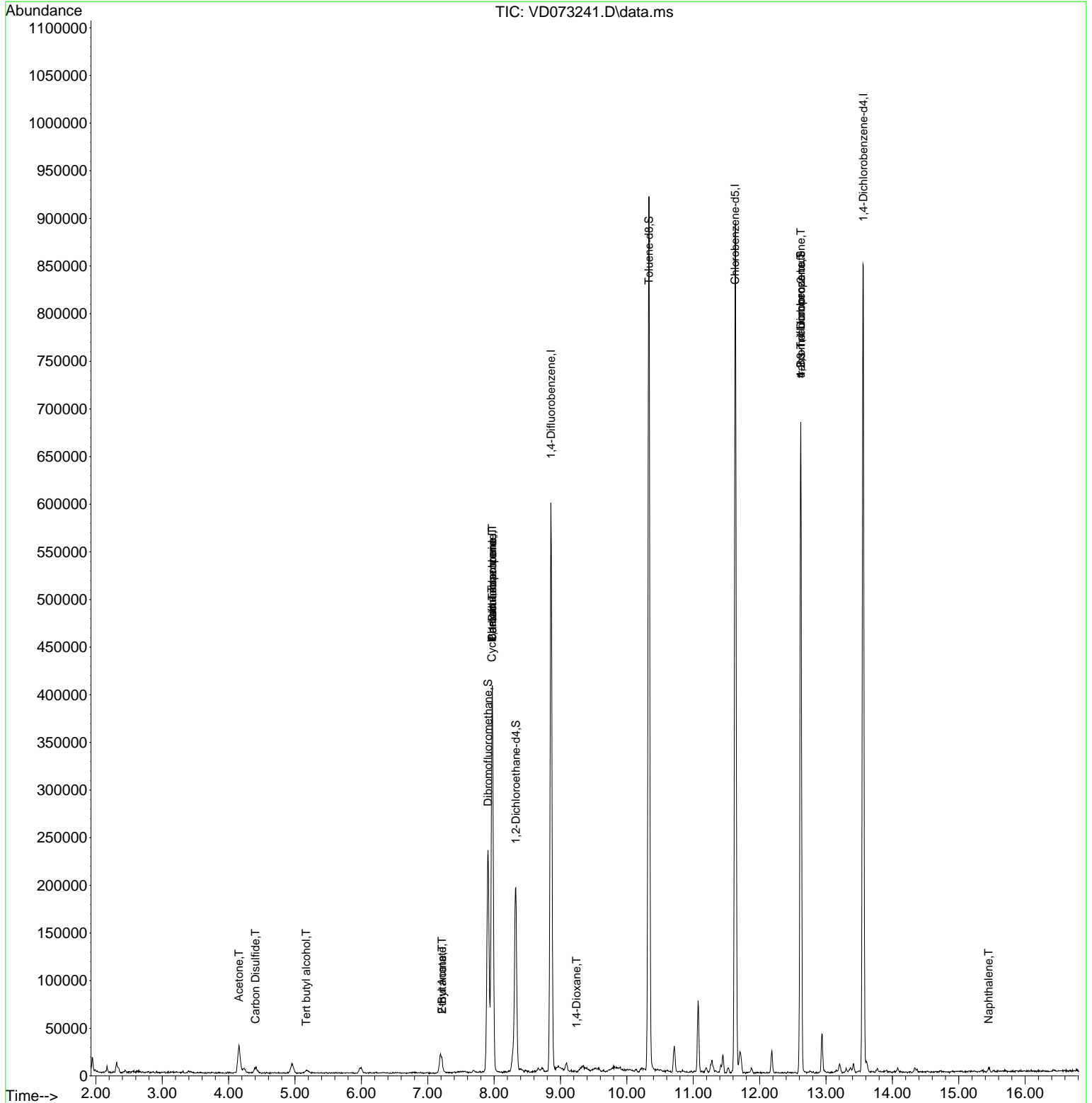
Compound	R.T.	QIon	Response	Conc	Units	Dev(Min)
-----						
Internal Standards						
1) Pentafluorobenzene	7.973	168	285689	50.000	ug/l	0.00
34) 1,4-Difluorobenzene	8.856	114	498706	50.000	ug/l	0.00
63) Chlorobenzene-d5	11.632	117	520637	50.000	ug/l	0.00
72) 1,4-Dichlorobenzene-d4	13.561	152	228006	50.000	ug/l	0.00
System Monitoring Compounds						
33) 1,2-Dichloroethane-d4	8.326	65	151099	47.858	ug/l	0.00
Spiked Amount	50.000	Range	50 - 163	Recovery	=	95.720%
35) Dibromofluoromethane	7.909	113	167582	50.925	ug/l	0.00
Spiked Amount	50.000	Range	54 - 147	Recovery	=	101.840%
50) Toluene-d8	10.332	98	617438	50.899	ug/l	0.00
Spiked Amount	50.000	Range	49 - 140	Recovery	=	101.800%
62) 4-Bromofluorobenzene	12.620	95	220819	51.870	ug/l	0.00
Spiked Amount	50.000	Range	25 - 144	Recovery	=	103.740%
Target Compounds						
					Qvalue	
5) Bromomethane	2.768	94	605	Below Cal	#	53
11) Tert butyl alcohol	5.168	59	2000	4.083	ug/l #	74
16) Acetone	4.156	43	50002	91.433	ug/l #	81
17) Carbon Disulfide	4.403	76	12042	1.265	ug/l #	88
20) Methylene Chloride	4.950	84	7806	Below Cal	#	57
25) 2-Butanone	7.214	43	16365	20.454	ug/l	97
31) Cyclohexane	7.967	56	7263	1.316	ug/l #	11
36) 1,1-Dichloropropene	7.973	75	24032	4.856	ug/l #	52
37) Ethyl Acetate	7.214	43	16365	8.371	ug/l #	72
38) Carbon Tetrachloride	7.973	117	30871	6.153	ug/l #	17
49) 1,4-Dioxane	9.244	88	54	2.650	ug/l #	21
76) 1,2,3-Trichloropropane	12.620	75	112931	50.480	ug/l #	100
81) trans-1,4-Dichloro-2-b...	12.620	75	112931	121.188	ug/l #	7
95) Naphthalene	15.449	128	73	3.551	ug/l #	70
-----						

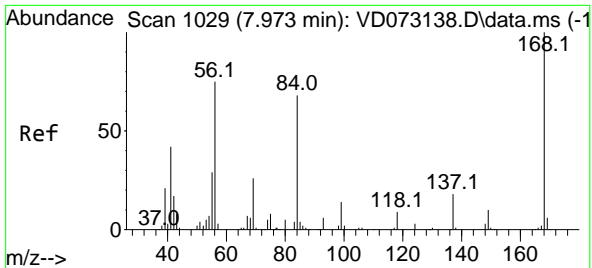
(#) = qualifier out of range (m) = manual integration (+) = signals summed

Data Path : Z:\voasrv\HPCHEM1\MSVOA\_D\Data\VD052122\  
 Data File : VD073241.D  
 Acq On : 21 May 2022 20:50  
 Operator : VA/SY  
 Sample : M2920-02  
 Misc : 4.37G/5.00ml/MSVOA\_D/SOIL  
 ALS Vial : 17 Sample Multiplier: 1

Instrument :  
 MSVOA\_D  
 ClientSampleId :  
 P015-SS007-0006-01

Quant Time: May 22 01:34:22 2022  
 Quant Method : Z:\voasrv\HPCHEM1\MSVOA\_D\Method\82D051922S.M  
 Quant Title : SW846 8260  
 QLast Update : Thu May 19 15:13:42 2022  
 Response via : Initial Calibration

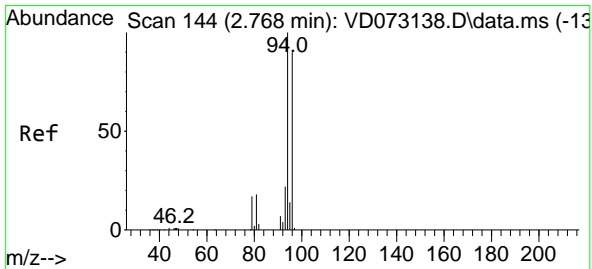
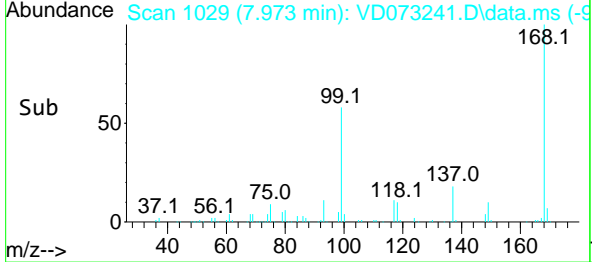
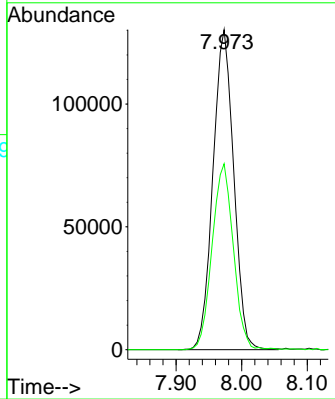
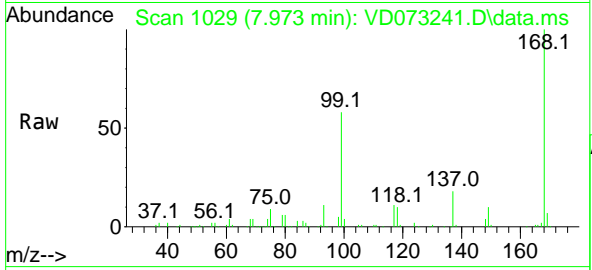




#1  
**Pentafluorobenzene**  
 Concen: 50.000 ug/l  
 RT: 7.973 min Scan# 10  
 Delta R.T. 0.000 min  
 Lab File: VD073241.D  
 Acq: 21 May 2022 20:50

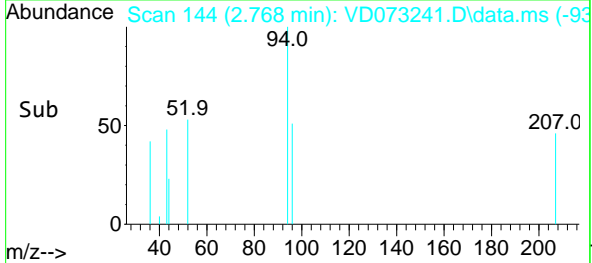
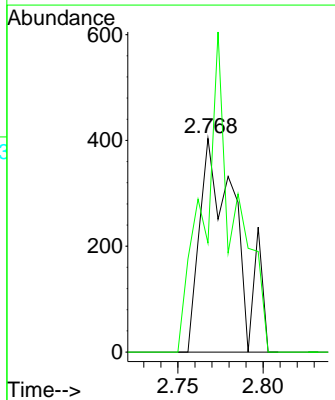
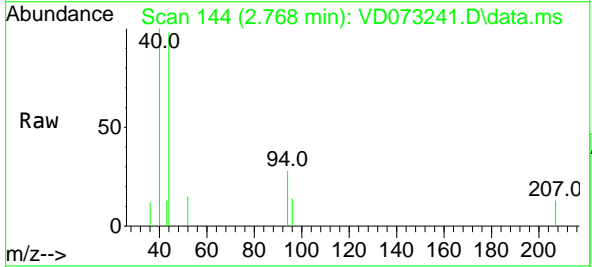
**Instrument :**  
 MSVOA\_D  
**ClientSampleId :**  
 P015-SS007-0006-01

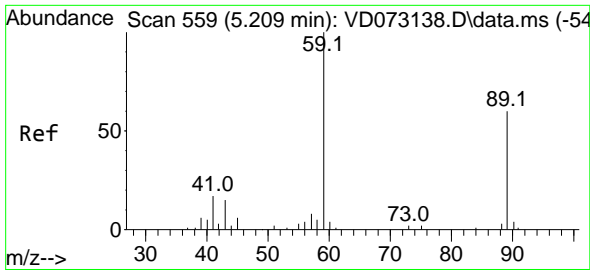
Tgt Ion:168 Resp: 285689  
 Ion Ratio Lower Upper  
 168 100  
 99 58.1 49.8 74.6



#5  
**Bromomethane**  
 Concen: Below Cal  
 RT: 2.768 min Scan# 144  
 Delta R.T. -0.000 min  
 Lab File: VD073241.D  
 Acq: 21 May 2022 20:50

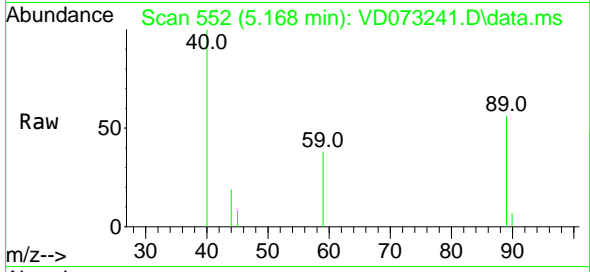
Tgt Ion: 94 Resp: 605  
 Ion Ratio Lower Upper  
 94 100  
 96 51.0 77.6 116.4#



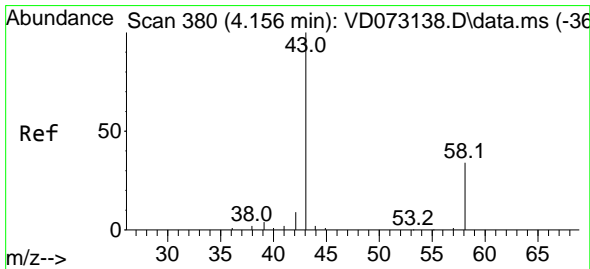
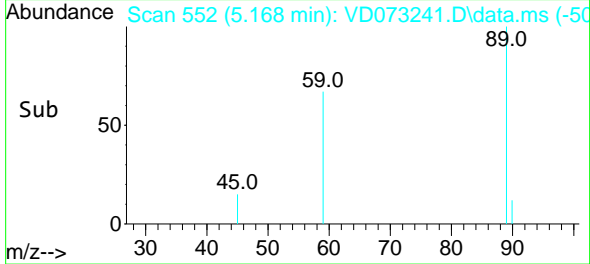
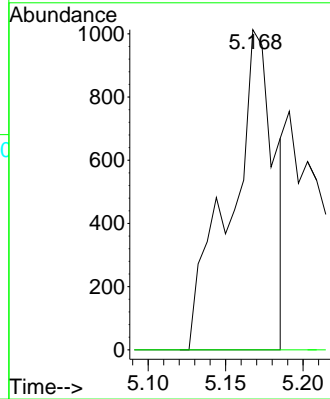


#11  
 Tert butyl alcohol  
 Concen: 4.083 ug/l  
 RT: 5.168 min Scan# 51  
 Delta R.T. -0.041 min  
 Lab File: VD073241.D  
 Acq: 21 May 2022 20:50

Instrument : MSVOA\_D  
 ClientSampleId : P015-SS007-0006-01

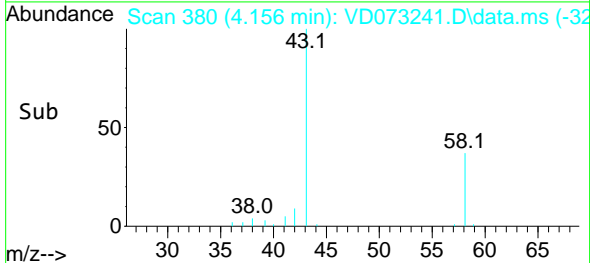
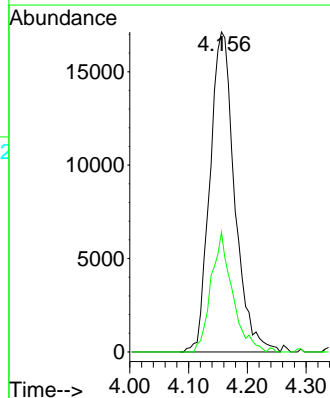
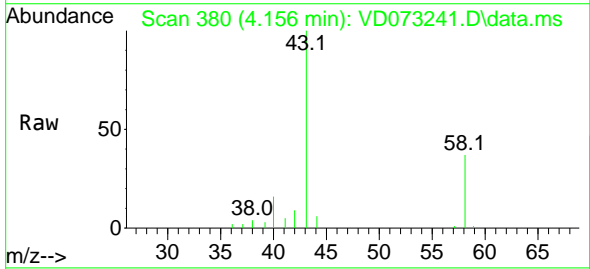


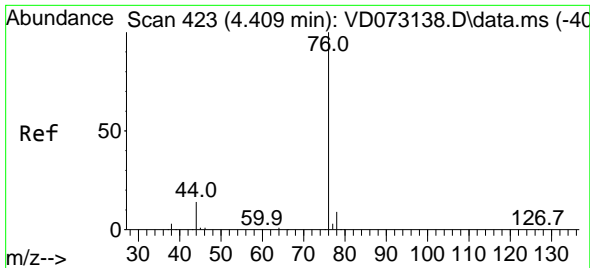
Tgt Ion: 59 Resp: 2000  
 Ion Ratio Lower Upper  
 59 100  
 57 0.0 7.8 11.6#



#16  
 Acetone  
 Concen: 91.433 ug/l  
 RT: 4.156 min Scan# 380  
 Delta R.T. -0.000 min  
 Lab File: VD073241.D  
 Acq: 21 May 2022 20:50

Tgt Ion: 43 Resp: 50002  
 Ion Ratio Lower Upper  
 43 100  
 58 37.4 22.1 33.1#

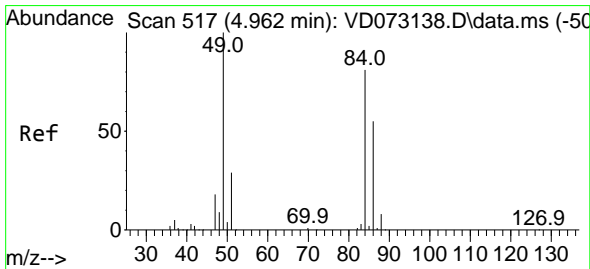
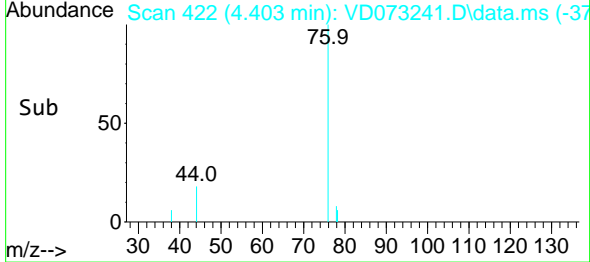
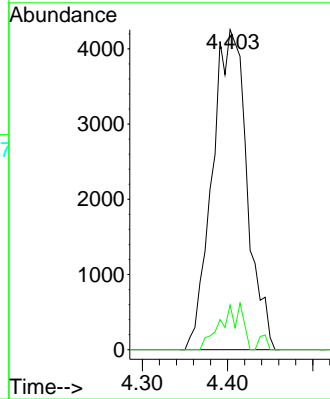
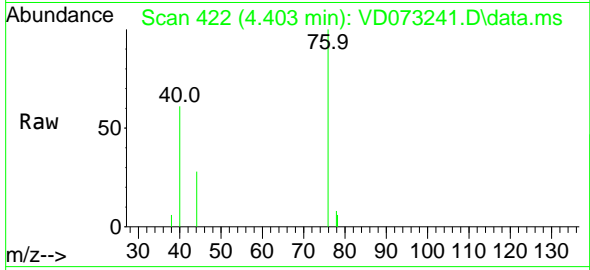




#17  
 Carbon Disulfide  
 Concen: 1.265 ug/l  
 RT: 4.403 min Scan# 411  
 Delta R.T. -0.006 min  
 Lab File: VD073241.D  
 Acq: 21 May 2022 20:50

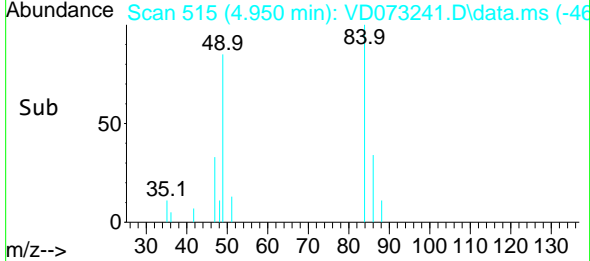
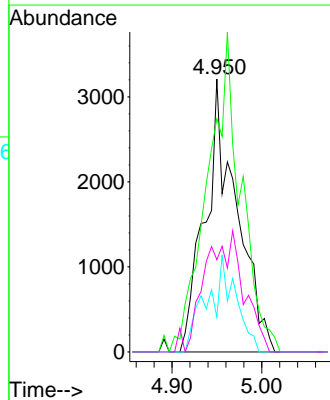
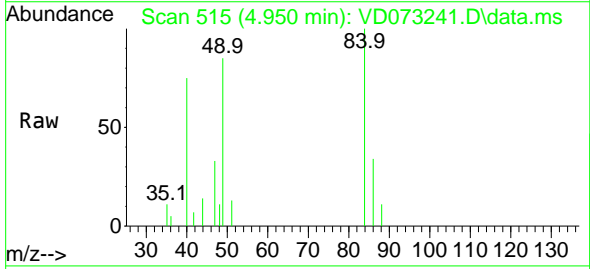
Instrument : MSVOA\_D  
 ClientSampleId : P015-SS007-0006-01

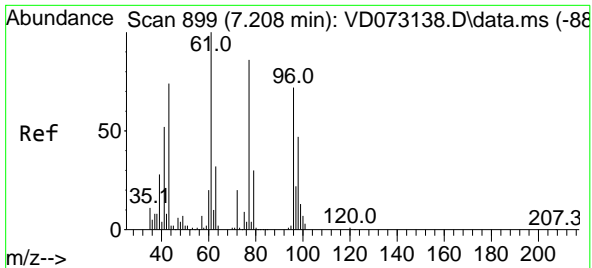
Tgt Ion: 76 Resp: 12042  
 Ion Ratio Lower Upper  
 76 100  
 78 13.9 7.5 11.3#



#20  
 Methylene Chloride  
 Concen: Below Cal  
 RT: 4.950 min Scan# 515  
 Delta R.T. -0.012 min  
 Lab File: VD073241.D  
 Acq: 21 May 2022 20:50

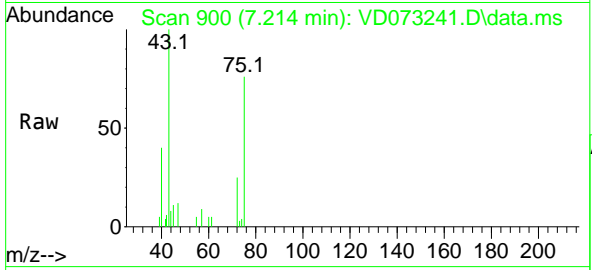
Tgt Ion: 84 Resp: 7806  
 Ion Ratio Lower Upper  
 84 100  
 49 85.4 112.8 169.2#  
 51 12.7 32.6 48.8#  
 86 33.8 47.9 71.9#



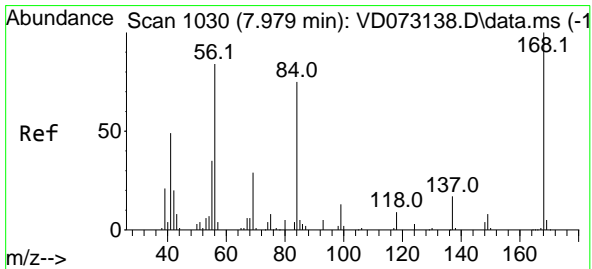
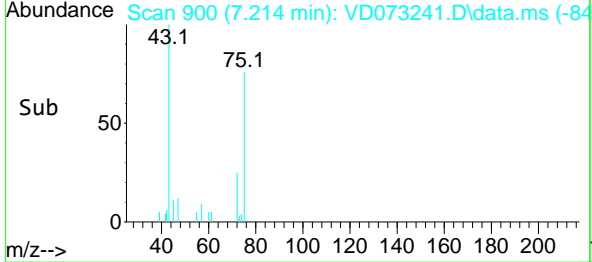
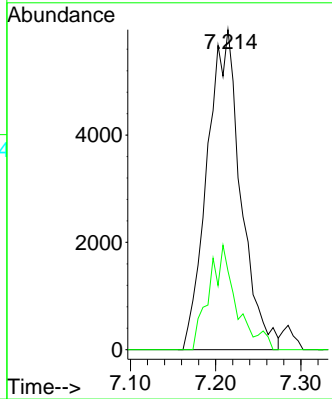


#25  
 2-Butanone  
 Concen: 20.454 ug/l  
 RT: 7.214 min Scan# 90  
 Delta R.T. 0.006 min  
 Lab File: VD073241.D  
 Acq: 21 May 2022 20:50

Instrument : MSVOA\_D  
 ClientSampleId : P015-SS007-0006-01

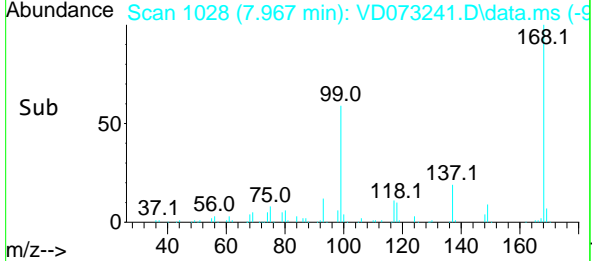
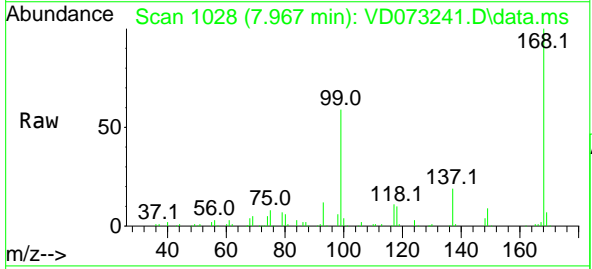
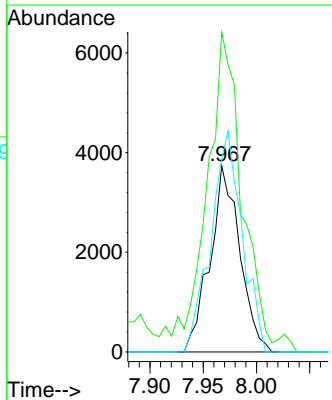


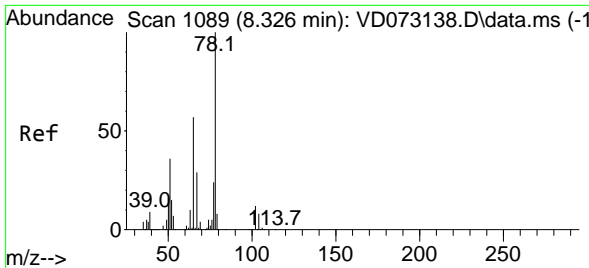
Tgt Ion: 43 Resp: 16365  
 Ion Ratio Lower Upper  
 43 100  
 72 24.6 18.6 27.8



#31  
 Cyclohexane  
 Concen: 1.316 ug/l  
 RT: 7.967 min Scan# 1028  
 Delta R.T. -0.012 min  
 Lab File: VD073241.D  
 Acq: 21 May 2022 20:50

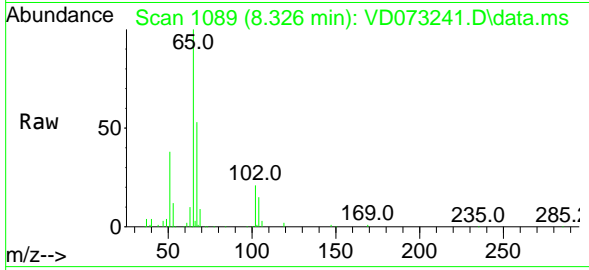
Tgt Ion: 56 Resp: 7263  
 Ion Ratio Lower Upper  
 56 100  
 69 165.3 25.4 38.2#  
 84 103.7 63.0 94.4#



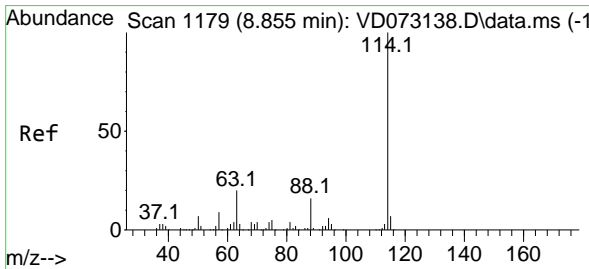
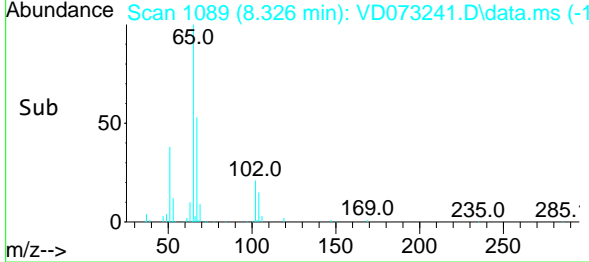
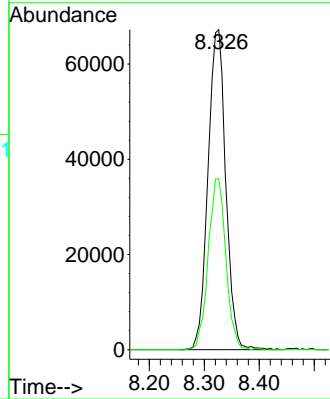


#33  
 1,2-Dichloroethane-d4  
 Concen: 47.858 ug/l  
 RT: 8.326 min Scan# 1089  
 Delta R.T. 0.000 min  
 Lab File: VD073241.D  
 Acq: 21 May 2022 20:50

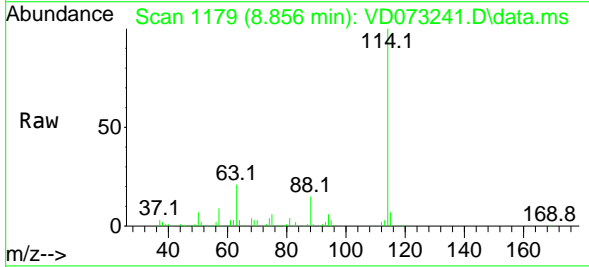
Instrument : MSVOA\_D  
 ClientSampleId : P015-SS007-0006-01



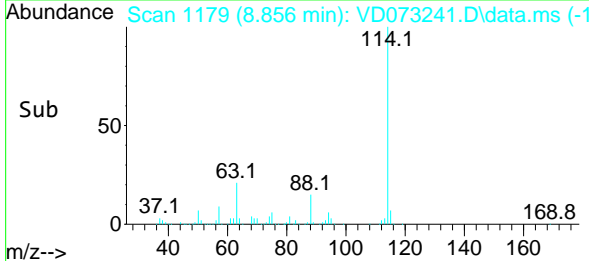
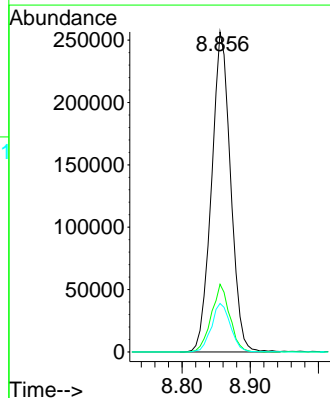
Tgt Ion: 65 Resp: 151099  
 Ion Ratio Lower Upper  
 65 100  
 67 52.9 0.0 101.4

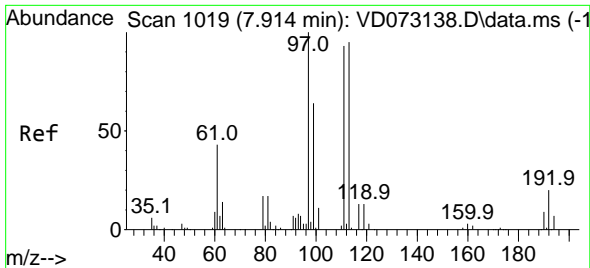


#34  
 1,4-Difluorobenzene  
 Concen: 50.000 ug/l  
 RT: 8.856 min Scan# 1179  
 Delta R.T. 0.001 min  
 Lab File: VD073241.D  
 Acq: 21 May 2022 20:50



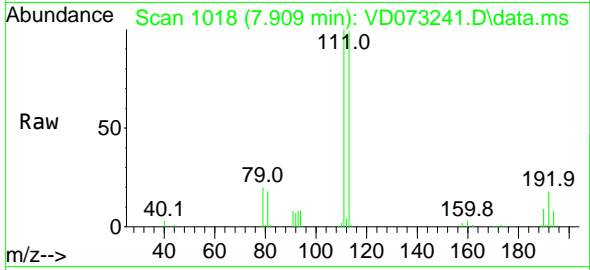
Tgt Ion: 114 Resp: 498706  
 Ion Ratio Lower Upper  
 114 100  
 63 21.1 0.0 46.6  
 88 15.2 0.0 33.2



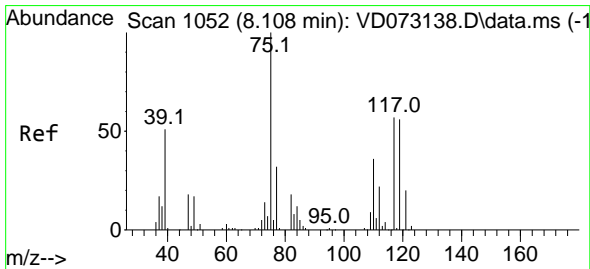
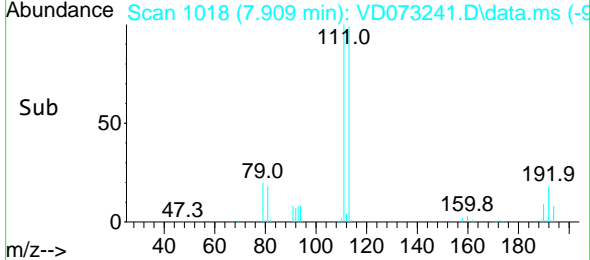
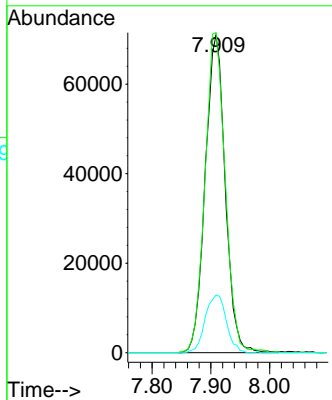


#35  
 Dibromofluoromethane  
 Concen: 50.925 ug/l  
 RT: 7.909 min Scan# 1029  
 Delta R.T. -0.005 min  
 Lab File: VD073241.D  
 Acq: 21 May 2022 20:50

Instrument : MSVOA\_D  
 ClientSampleId : P015-SS007-0006-01

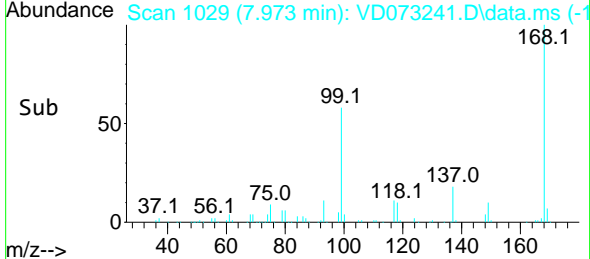
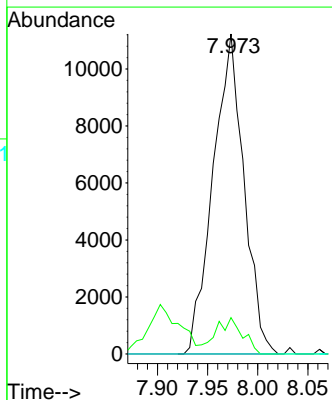
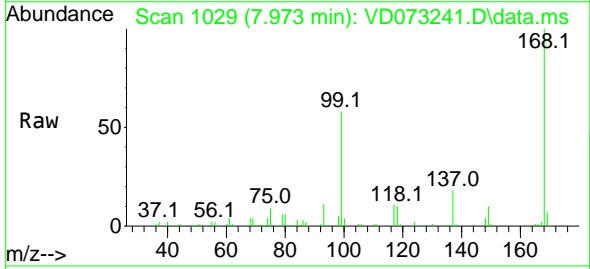


Tgt Ion:113 Resp: 167582  
 Ion Ratio Lower Upper  
 113 100  
 111 102.1 83.8 125.6  
 192 19.2 14.6 21.8

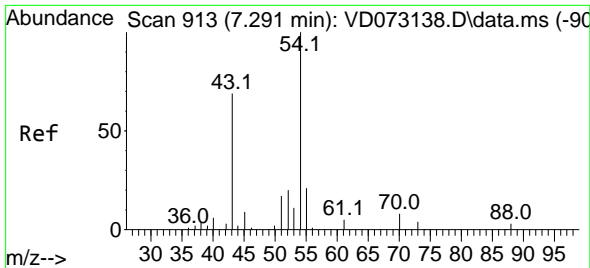


#36  
 1,1-Dichloropropene  
 Concen: 4.856 ug/l  
 RT: 7.973 min Scan# 1029  
 Delta R.T. -0.135 min  
 Lab File: VD073241.D  
 Acq: 21 May 2022 20:50

Tgt Ion: 75 Resp: 24032  
 Ion Ratio Lower Upper  
 75 100  
 110 9.7 16.4 49.1#  
 77 0.0 24.2 36.2#





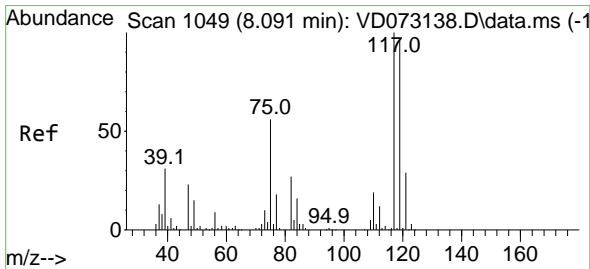
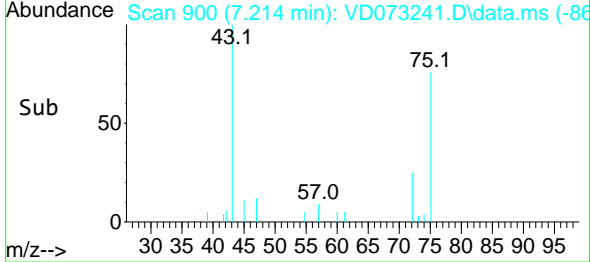
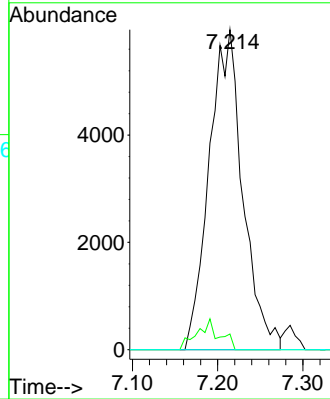
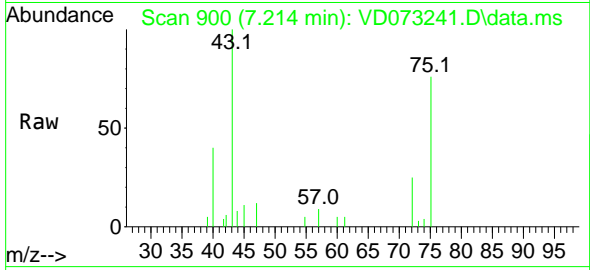


#37  
 Ethyl Acetate  
 Concen: 8.371 ug/l  
 RT: 7.214 min Scan# 900  
 Delta R.T. -0.077 min  
 Lab File: VD073241.D  
 Acq: 21 May 2022 20:50

Instrument : MSVOA\_D  
 ClientSampleId : P015-SS007-0006-01

Tgt Ion: 43 Resp: 16365

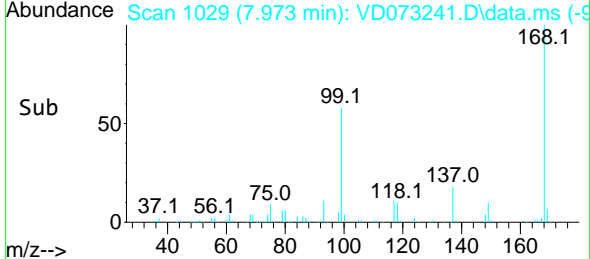
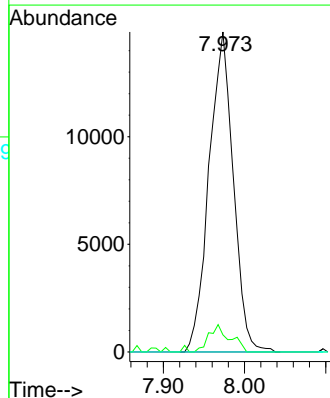
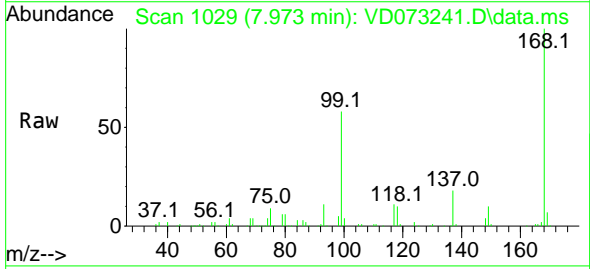
Ion	Ratio	Lower	Upper
43	100		
61	0.0	9.8	14.8#
70	0.0	6.9	10.3#

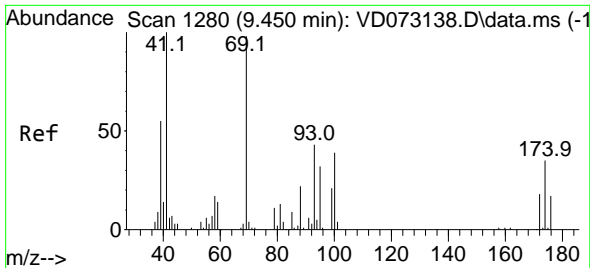


#38  
 Carbon Tetrachloride  
 Concen: 6.153 ug/l  
 RT: 7.973 min Scan# 1029  
 Delta R.T. -0.118 min  
 Lab File: VD073241.D  
 Acq: 21 May 2022 20:50

Tgt Ion: 117 Resp: 30871

Ion	Ratio	Lower	Upper
117	100		
119	5.4	75.8	113.6#
121	0.0	24.5	36.7#

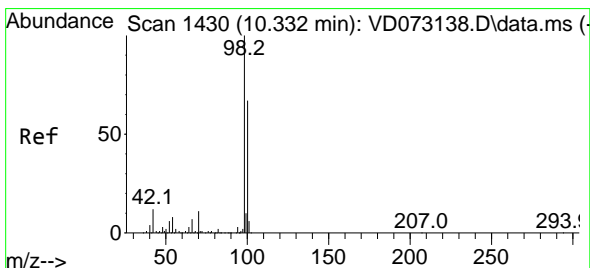
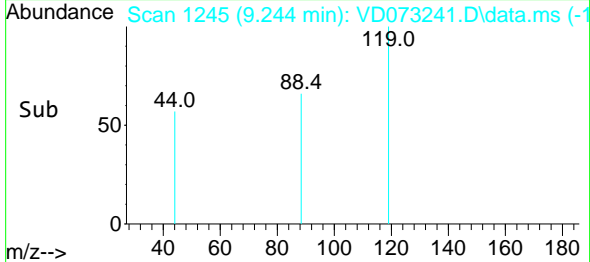
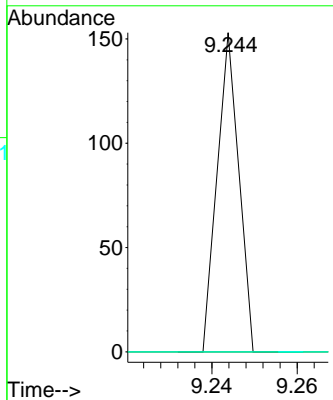
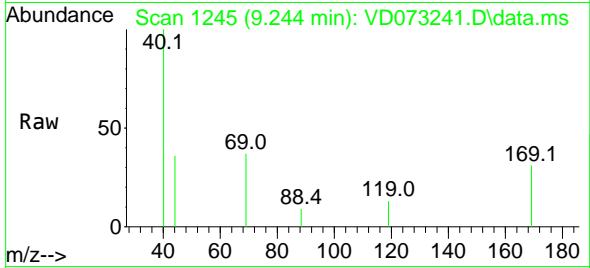




#49  
 1,4-Dioxane  
 Concen: 2.650 ug/l  
 RT: 9.244 min Scan# 11  
 Delta R.T. -0.206 min  
 Lab File: VD073241.D  
 Acq: 21 May 2022 20:50

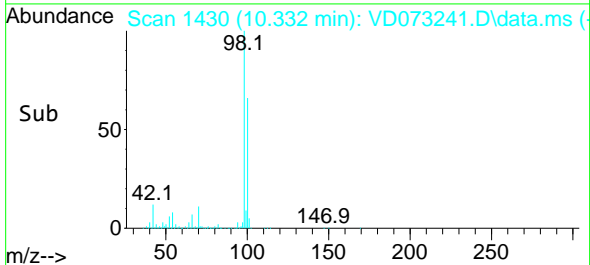
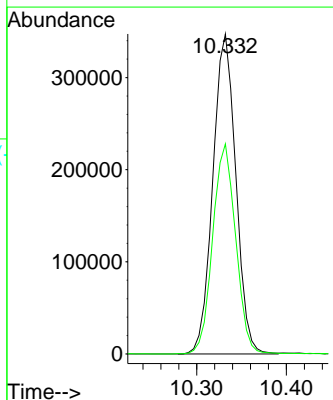
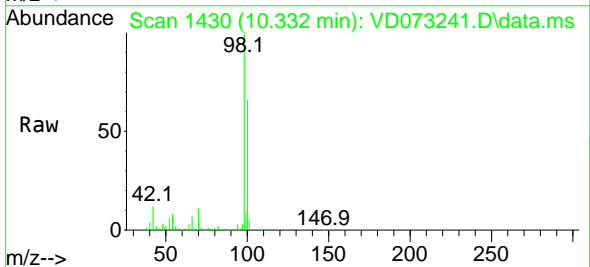
Instrument : MSVOA\_D  
 ClientSampleId : P015-SS007-0006-01

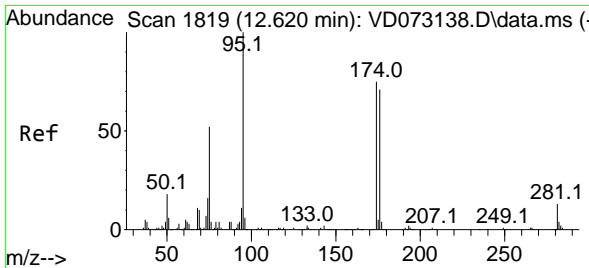
Tgt Ion	Resp	Lower	Upper
88	100		
43	0.0	31.0	46.4#
58	0.0	58.1	87.1#



#50  
 Toluene-d8  
 Concen: 50.899 ug/l  
 RT: 10.332 min Scan# 1430  
 Delta R.T. -0.000 min  
 Lab File: VD073241.D  
 Acq: 21 May 2022 20:50

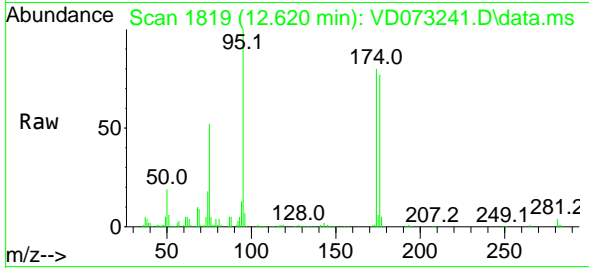
Tgt Ion	Resp	Lower	Upper
98	100		
100	65.8	52.4	78.6





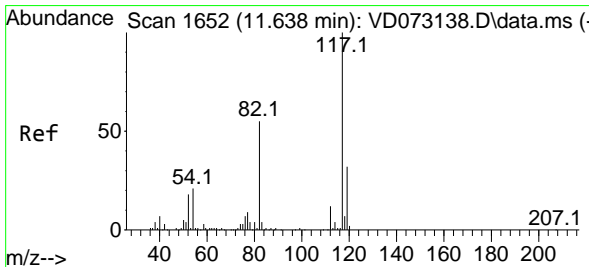
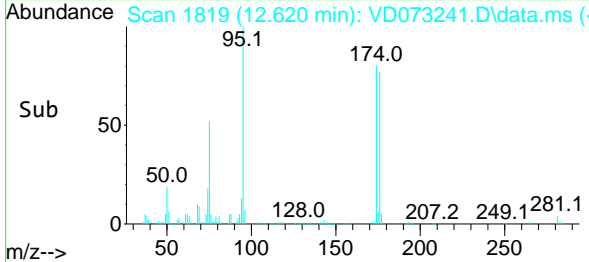
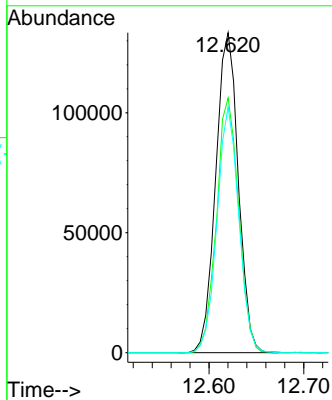
#62  
 4-Bromofluorobenzene  
 Concen: 51.870 ug/l  
 RT: 12.620 min Scan# 1819  
 Delta R.T. 0.000 min  
 Lab File: VD073241.D  
 Acq: 21 May 2022 20:50

Instrument : MSVOA\_D  
 ClientSampleId : P015-SS007-0006-01



Tgt Ion: 95 Resp: 220819

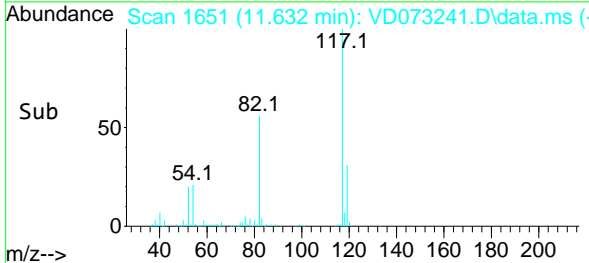
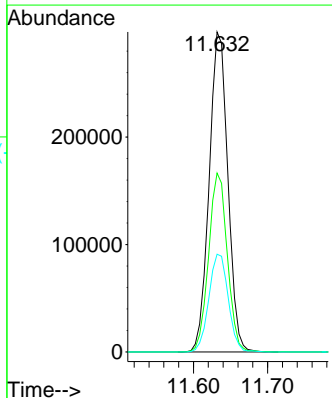
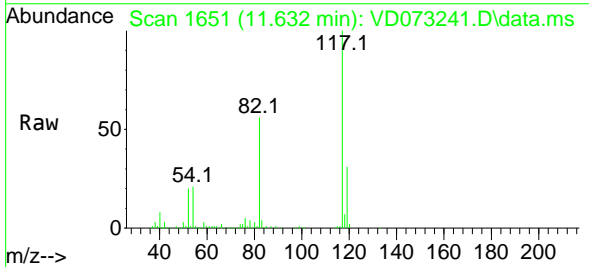
Ion	Ratio	Lower	Upper
95	100		
174	78.7	0.0	152.8
176	74.1	0.0	145.4

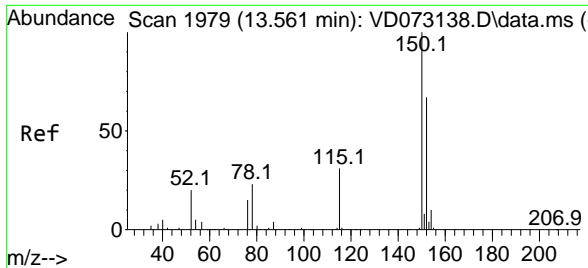


#63  
 Chlorobenzene-d5  
 Concen: 50.000 ug/l  
 RT: 11.632 min Scan# 1651  
 Delta R.T. -0.006 min  
 Lab File: VD073241.D  
 Acq: 21 May 2022 20:50

Tgt Ion: 117 Resp: 520637

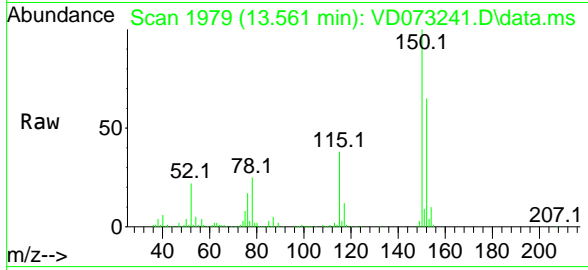
Ion	Ratio	Lower	Upper
117	100		
82	55.9	45.3	67.9
119	30.6	26.6	40.0



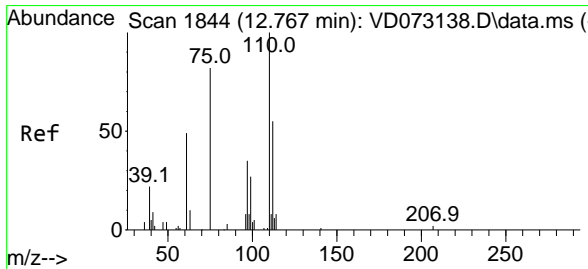
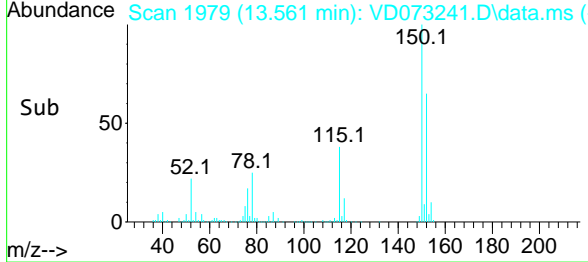
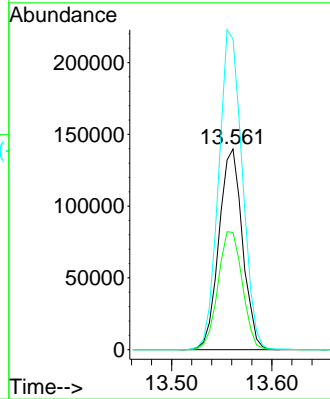


#72  
 1,4-Dichlorobenzene-d4  
 Concen: 50.000 ug/l  
 RT: 13.561 min Scan# 1819  
 Delta R.T. 0.000 min  
 Lab File: VD073241.D  
 Acq: 21 May 2022 20:50

Instrument : MSVOA\_D  
 ClientSampleId : P015-SS007-0006-01

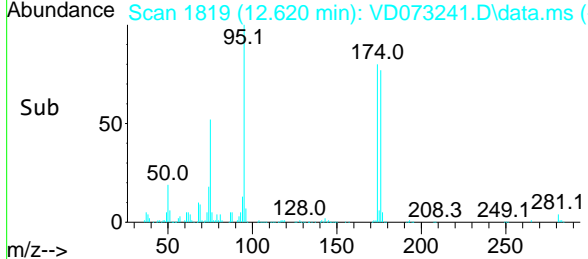
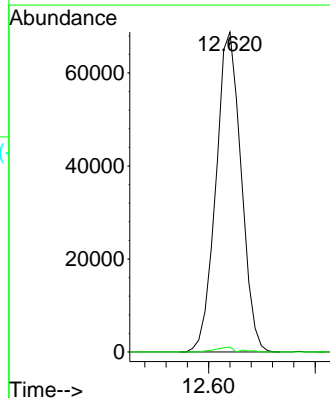
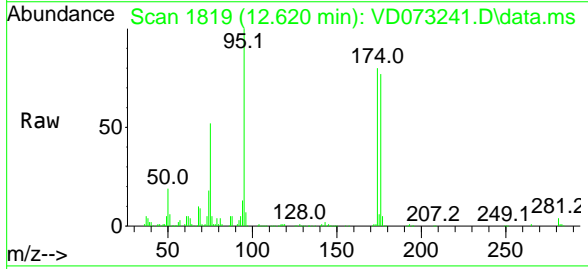


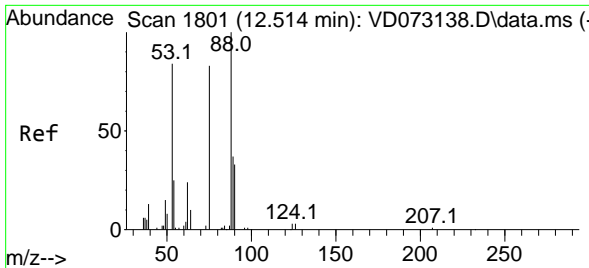
Tgt Ion:152 Resp: 228006  
 Ion Ratio Lower Upper  
 152 100  
 115 60.8 31.3 93.8  
 150 159.7 0.0 348.6



#76  
 1,2,3-Trichloropropane  
 Concen: 50.480 ug/l  
 RT: 12.620 min Scan# 1819  
 Delta R.T. -0.147 min  
 Lab File: VD073241.D  
 Acq: 21 May 2022 20:50

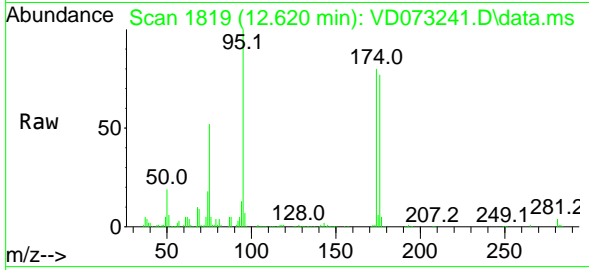
Tgt Ion: 75 Resp: 112931  
 Ion Ratio Lower Upper  
 75 100  
 77 1.3 0.0 0.0#



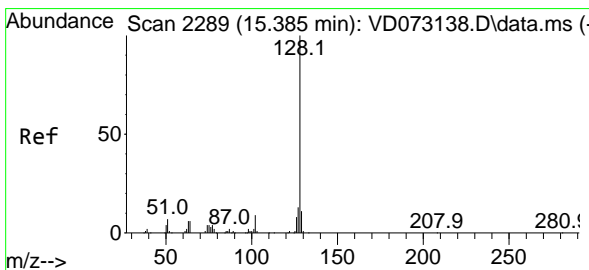
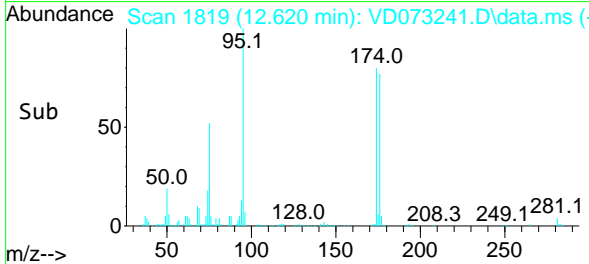
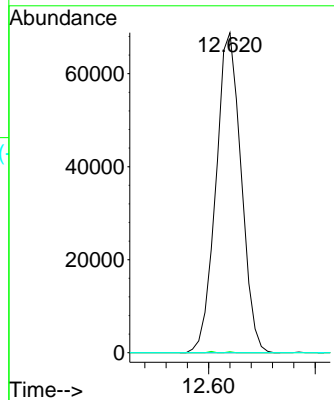


#81  
 trans-1,4-Dichloro-2-butene  
 Concen: 121.188 ug/l  
 RT: 12.620 min Scan# 11  
 Delta R.T. 0.106 min  
 Lab File: VD073241.D  
 Acq: 21 May 2022 20:50

Instrument : MSVOA\_D  
 ClientSampleId : P015-SS007-0006-01



Tgt Ion	Resp	Lower	Upper
75	112931		
75	100		
53	0.1	86.5	129.7#
89	0.0	33.9	50.9#



#95  
 Naphthalene  
 Concen: 3.551 ug/l  
 RT: 15.449 min Scan# 2300  
 Delta R.T. 0.064 min  
 Lab File: VD073241.D  
 Acq: 21 May 2022 20:50

Tgt Ion	Resp	Lower	Upper
128	73		
128	100		
127	0.0	10.3	15.5#
129	0.0	8.4	12.6#

