

Data Path : Z:\voasrv\HPCHEM1\MSVOA_D\Data\VD052122\
 Data File : VD073267.D
 Acq On : 22 May 2022 10:55
 Operator : VA/SY
 Sample : N2920-22
 Misc : 4.25G/5.00ml/MSVOA_D/SOIL
 ALS Vial : 46 Sample Multiplier: 1

Instrument :
 MSVOA_D
 ClientSampleId :
 P024-SS010-0006-01

Quant Time: May 23 01:15:29 2022
 Quant Method : Z:\voasrv\HPCHEM1\MSVOA_D\Method\82D051922S.M
 Quant Title : SW846 8260
 QLast Update : Thu May 19 15:13:42 2022
 Response via : Initial Calibration

Compound	R.T.	QIon	Response	Conc	Units	Dev(Min)

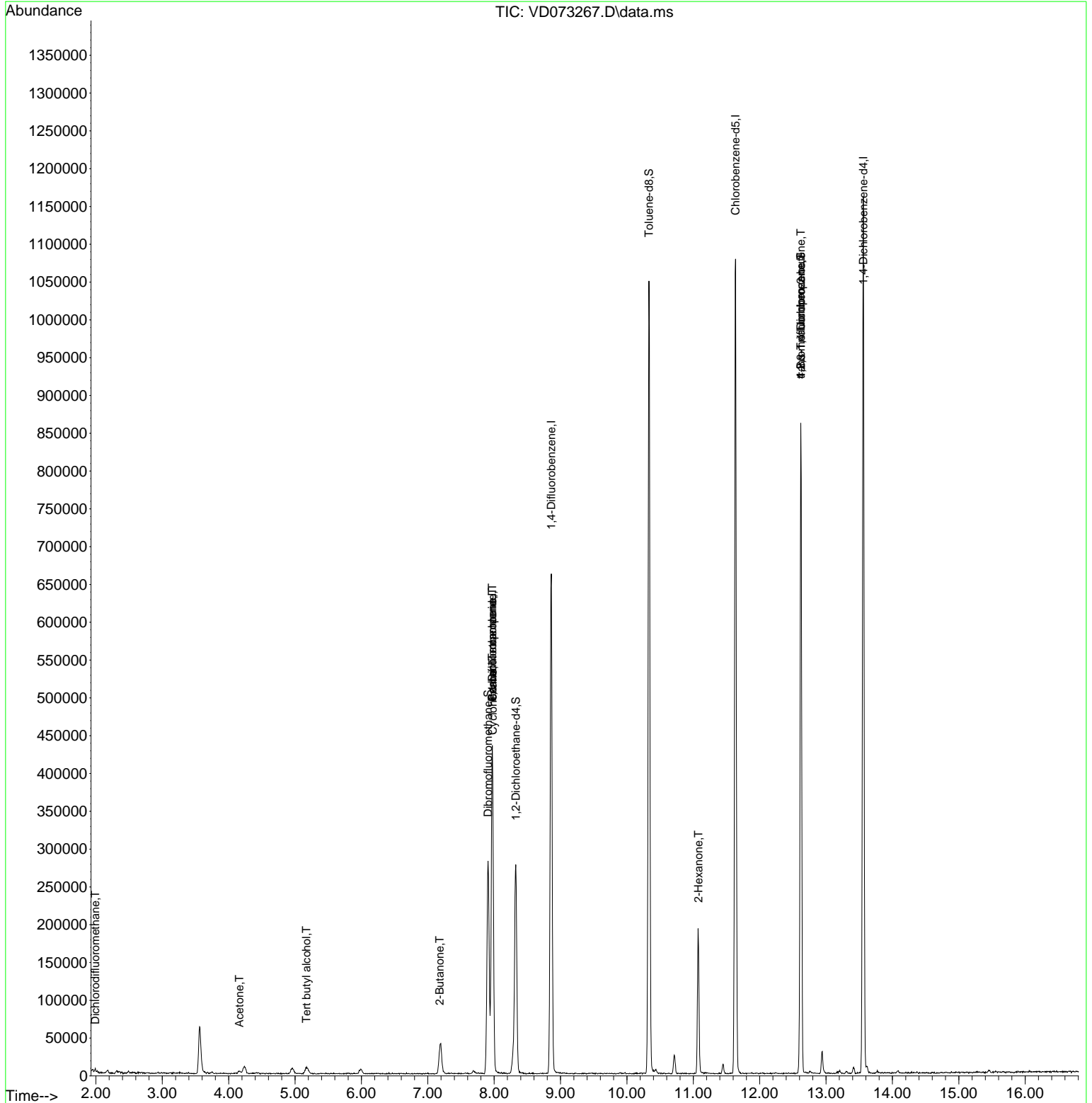
Internal Standards						
1) Pentafluorobenzene	7.973	168	314493	50.000	ug/l	0.00
34) 1,4-Difluorobenzene	8.861	114	570962	50.000	ug/l	0.00
63) Chlorobenzene-d5	11.637	117	629262	50.000	ug/l	0.00
72) 1,4-Dichlorobenzene-d4	13.561	152	295371	50.000	ug/l	0.00
System Monitoring Compounds						
33) 1,2-Dichloroethane-d4	8.326	65	221640	63.770	ug/l	0.00
Spiked Amount	50.000	Range 50 - 163	Recovery	=	127.540%	
35) Dibromofluoromethane	7.908	113	203282	53.956	ug/l	0.00
Spiked Amount	50.000	Range 54 - 147	Recovery	=	107.920%	
50) Toluene-d8	10.332	98	710968	51.192	ug/l	0.00
Spiked Amount	50.000	Range 49 - 140	Recovery	=	102.380%	
62) 4-Bromofluorobenzene	12.620	95	284581	58.388	ug/l	0.00
Spiked Amount	50.000	Range 25 - 144	Recovery	=	116.780%	
Target Compounds						
						Qvalue
2) Dichlorodifluoromethane	1.991	85	3542	1.127	ug/l	96
5) Bromomethane	2.779	94	382	Below Cal	#	65
11) Tert butyl alcohol	5.173	59	7267	13.476	ug/l #	74
16) Acetone	4.161	43	6456	10.724	ug/l #	74
20) Methylene Chloride	4.961	84	6060	Below Cal	#	85
25) 2-Butanone	7.179	43	1648	1.871	ug/l #	52
31) Cyclohexane	7.979	56	7743	1.275	ug/l #	14
36) 1,1-Dichloropropene	7.973	75	26832	4.735	ug/l #	52
38) Carbon Tetrachloride	7.973	117	32467	5.652	ug/l #	17
59) 2-Hexanone	11.079	43	1873	1.322	ug/l #	56
76) 1,2,3-Trichloropropane	12.620	75	142761	49.260	ug/l #	100
81) trans-1,4-Dichloro-2-b...	12.620	75	142761	118.259	ug/l #	7

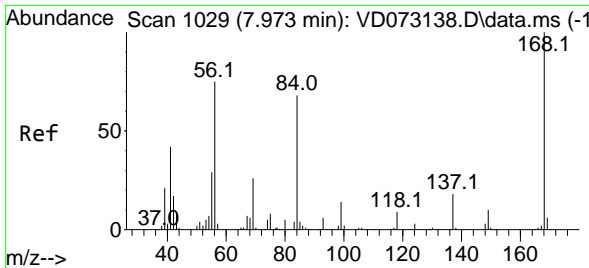
(#) = qualifier out of range (m) = manual integration (+) = signals summed

Data Path : Z:\voasrv\HPCHEM1\MSVOA_D\Data\VD052122\
 Data File : VD073267.D
 Acq On : 22 May 2022 10:55
 Operator : VA/SY
 Sample : N2920-22
 Misc : 4.25G/5.00ml/MSVOA_D/SOIL
 ALS Vial : 46 Sample Multiplier: 1

Instrument :
 MSVOA_D
 ClientSampleId :
 P024-SS010-0006-01

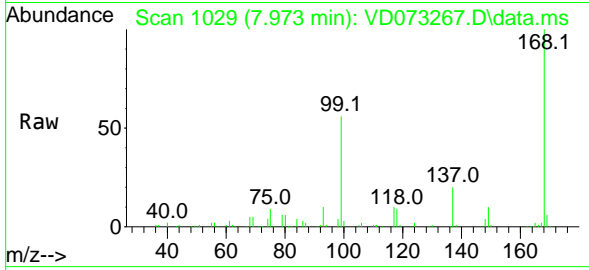
Quant Time: May 23 01:15:29 2022
 Quant Method : Z:\voasrv\HPCHEM1\MSVOA_D\Method\82D051922S.M
 Quant Title : SW846 8260
 QLast Update : Thu May 19 15:13:42 2022
 Response via : Initial Calibration



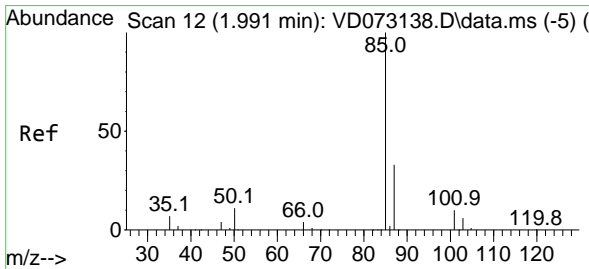
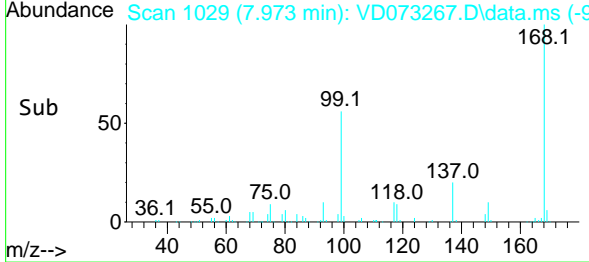
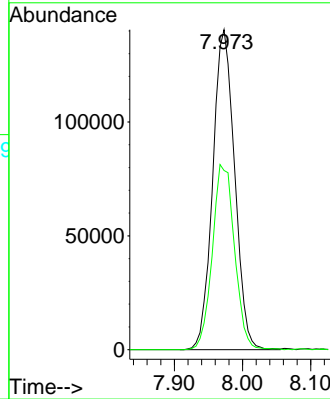


#1
 Pentafluorobenzene
 Concen: 50.000 ug/l
 RT: 7.973 min Scan# 10
 Delta R.T. -0.000 min
 Lab File: VD073267.D
 Acq: 22 May 2022 10:55

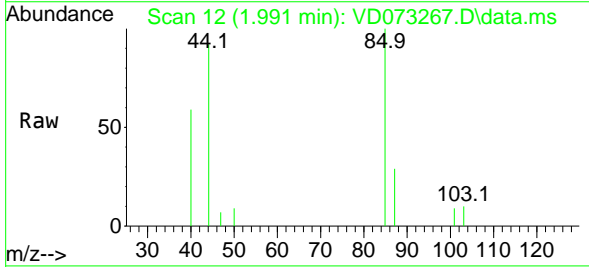
Instrument :
 MSVOA_D
 ClientSampleId :
 P024-SS010-0006-01



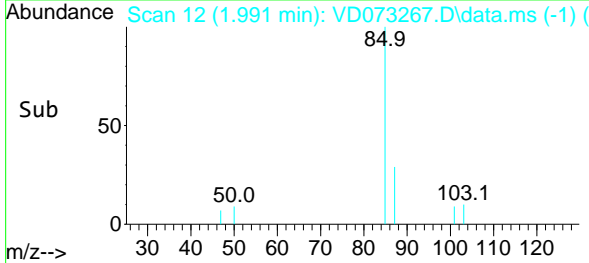
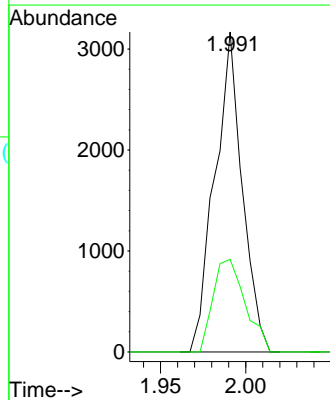
Tgt Ion:168 Resp: 314493
 Ion Ratio Lower Upper
 168 100
 99 56.0 49.8 74.6

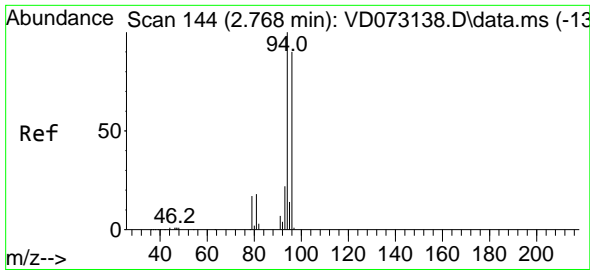


#2
 Dichlorodifluoromethane
 Concen: 1.127 ug/l
 RT: 1.991 min Scan# 12
 Delta R.T. -0.000 min
 Lab File: VD073267.D
 Acq: 22 May 2022 10:55



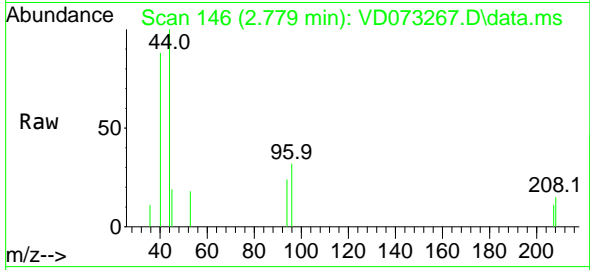
Tgt Ion: 85 Resp: 3542
 Ion Ratio Lower Upper
 85 100
 87 29.0 15.7 47.0



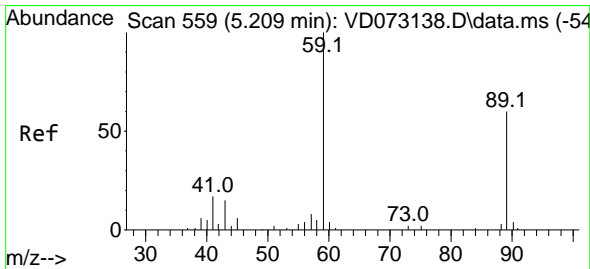
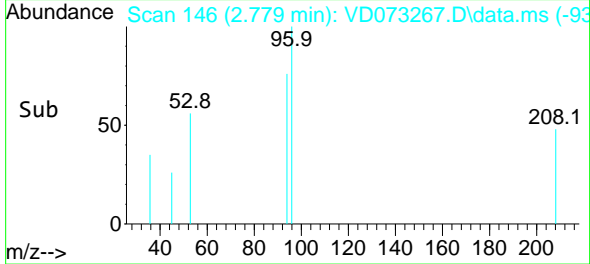
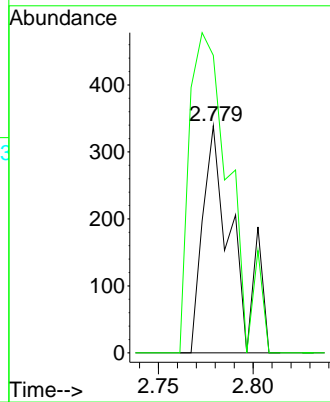


#5
 Bromomethane
 Concen: Below Cal
 RT: 2.779 min Scan# 14
 Delta R.T. 0.011 min
 Lab File: VD073267.D
 Acq: 22 May 2022 10:55

Instrument : MSVOA_D
 ClientSampleId : P024-SS010-0006-01

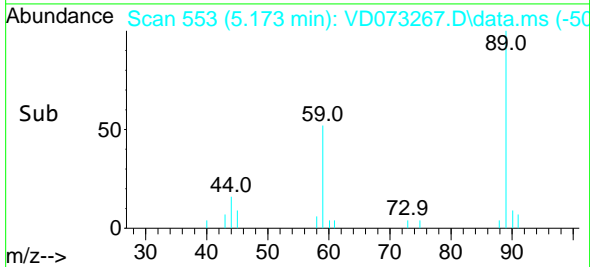
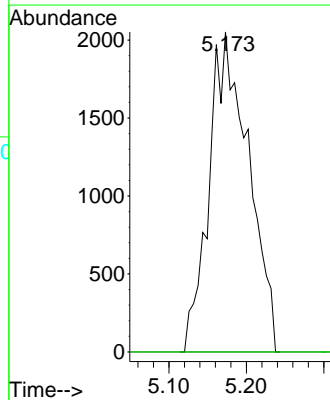
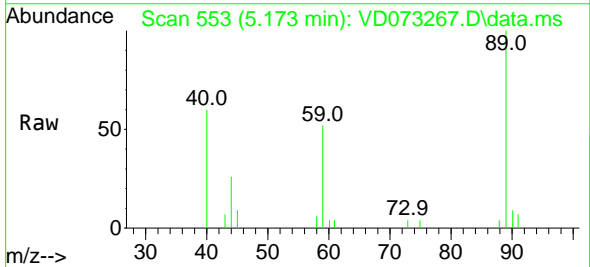


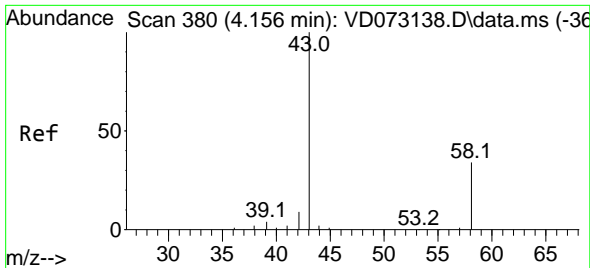
Tgt Ion: 94 Resp: 382
 Ion Ratio Lower Upper
 94 100
 96 131.0 77.6 116.4#



#11
 Tert butyl alcohol
 Concen: 13.476 ug/l
 RT: 5.173 min Scan# 553
 Delta R.T. -0.036 min
 Lab File: VD073267.D
 Acq: 22 May 2022 10:55

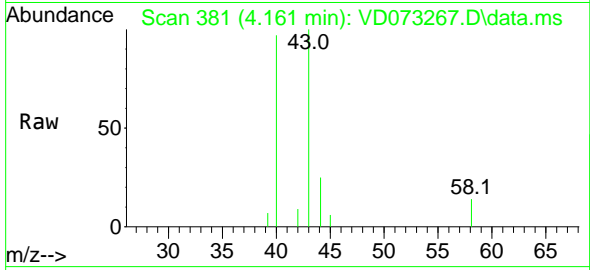
Tgt Ion: 59 Resp: 7267
 Ion Ratio Lower Upper
 59 100
 57 0.0 7.8 11.6#



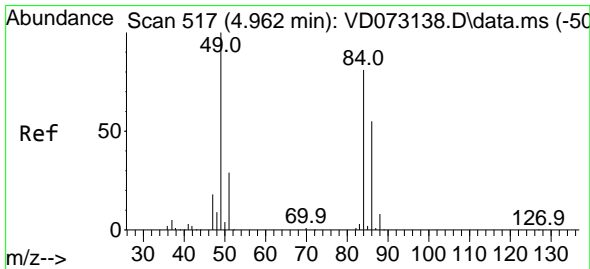
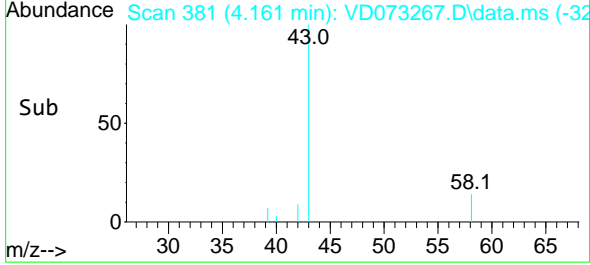
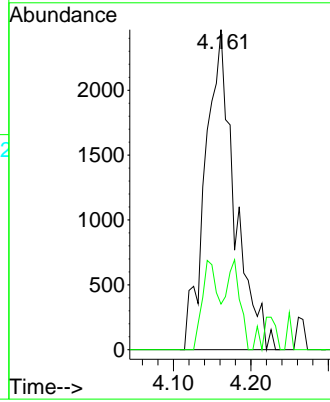


#16
 Acetone
 Concen: 10.724 ug/l
 RT: 4.161 min Scan# 380
 Delta R.T. 0.005 min
 Lab File: VD073267.D
 Acq: 22 May 2022 10:55

Instrument : MSVOA_D
 ClientSampleId : P024-SS010-0006-01

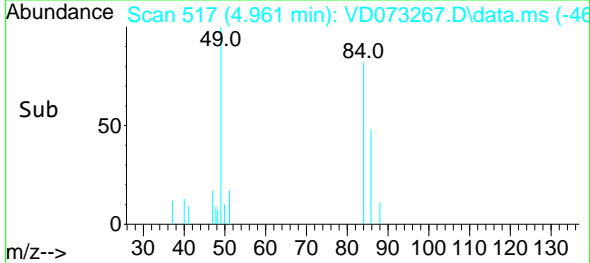
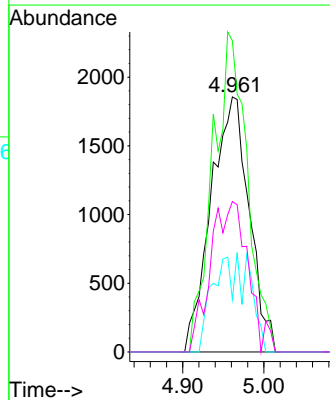
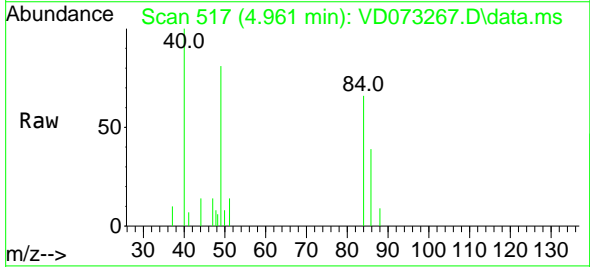


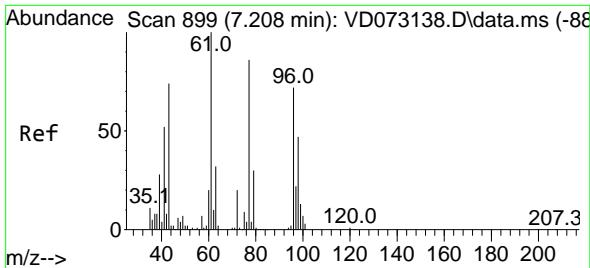
Tgt Ion: 43 Resp: 6456
 Ion Ratio Lower Upper
 43 100
 58 14.3 22.1 33.1#



#20
 Methylene Chloride
 Concen: Below Cal
 RT: 4.961 min Scan# 517
 Delta R.T. -0.001 min
 Lab File: VD073267.D
 Acq: 22 May 2022 10:55

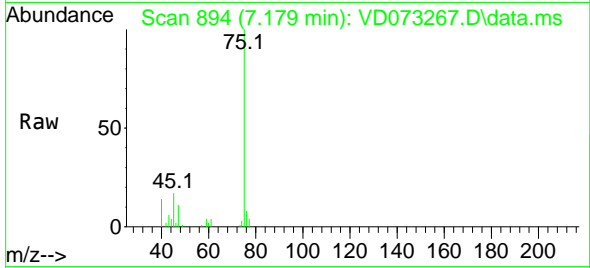
Tgt Ion: 84 Resp: 6060
 Ion Ratio Lower Upper
 84 100
 49 122.0 112.8 169.2
 51 20.6 32.6 48.8#
 86 59.0 47.9 71.9



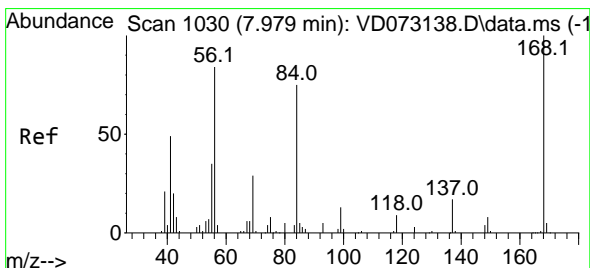
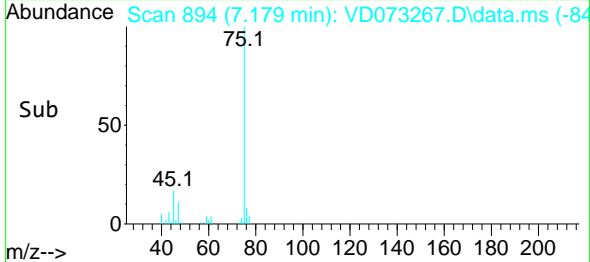
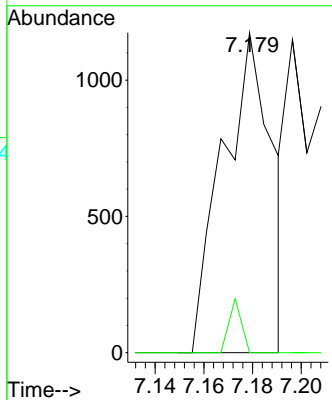


#25
 2-Butanone
 Concen: 1.871 ug/l
 RT: 7.179 min Scan# 899
 Delta R.T. -0.029 min
 Lab File: VD073267.D
 Acq: 22 May 2022 10:55

Instrument : MSVOA_D
 ClientSampleId : P024-SS010-0006-01

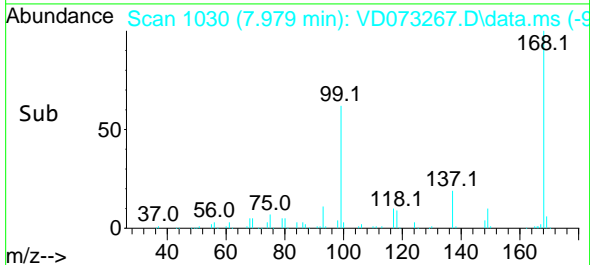
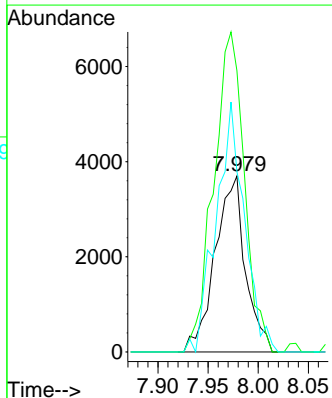
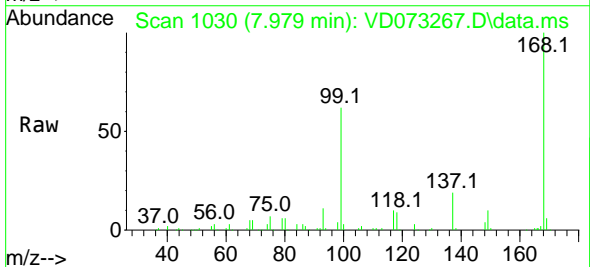


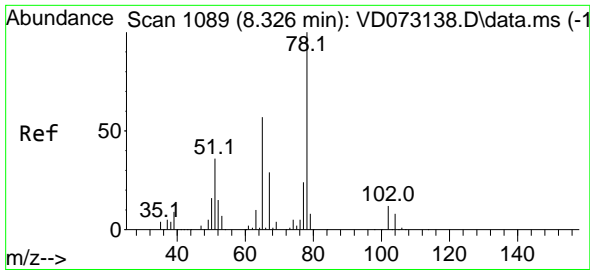
Tgt Ion: 43 Resp: 1648
 Ion Ratio Lower Upper
 43 100
 72 0.0 18.6 27.8#



#31
 Cyclohexane
 Concen: 1.275 ug/l
 RT: 7.979 min Scan# 1030
 Delta R.T. -0.000 min
 Lab File: VD073267.D
 Acq: 22 May 2022 10:55

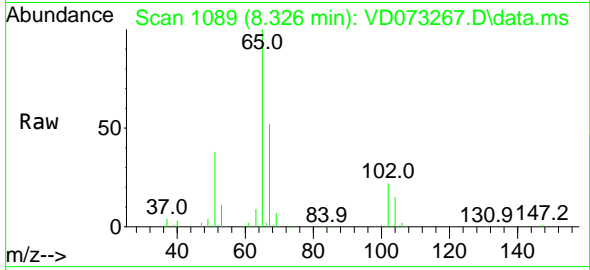
Tgt Ion: 56 Resp: 7743
 Ion Ratio Lower Upper
 56 100
 69 159.9 25.4 38.2#
 84 102.4 63.0 94.4#



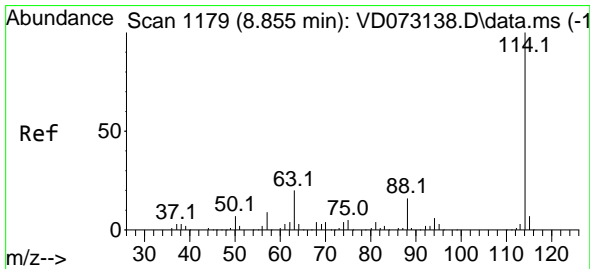
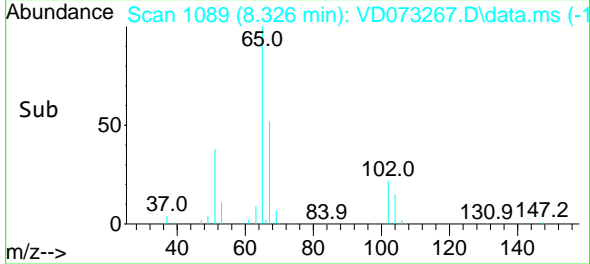
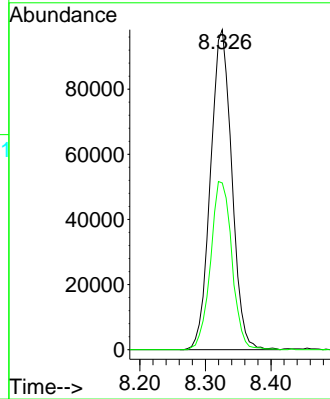


#33
 1,2-Dichloroethane-d4
 Concen: 63.770 ug/l
 RT: 8.326 min Scan# 1180
 Delta R.T. -0.000 min
 Lab File: VD073267.D
 Acq: 22 May 2022 10:55

Instrument : MSVOA_D
 ClientSampleId : P024-SS010-0006-01

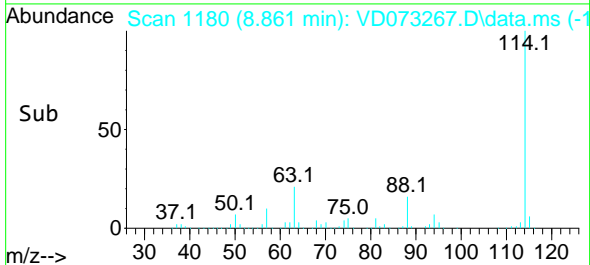
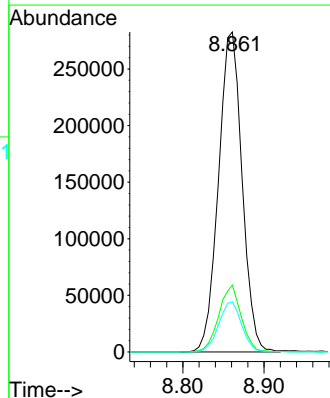
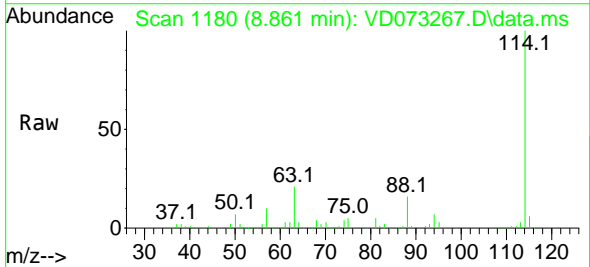


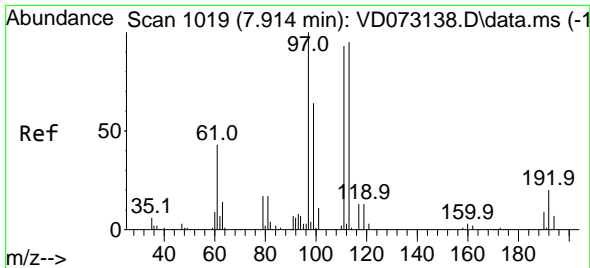
Tgt Ion: 65 Resp: 221640
 Ion Ratio Lower Upper
 65 100
 67 52.7 0.0 101.4



#34
 1,4-Difluorobenzene
 Concen: 50.000 ug/l
 RT: 8.861 min Scan# 1180
 Delta R.T. 0.006 min
 Lab File: VD073267.D
 Acq: 22 May 2022 10:55

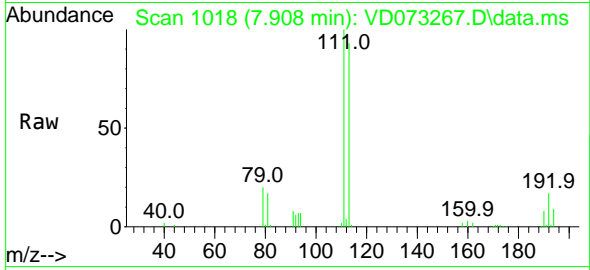
Tgt Ion: 114 Resp: 570962
 Ion Ratio Lower Upper
 114 100
 63 20.9 0.0 46.6
 88 15.7 0.0 33.2





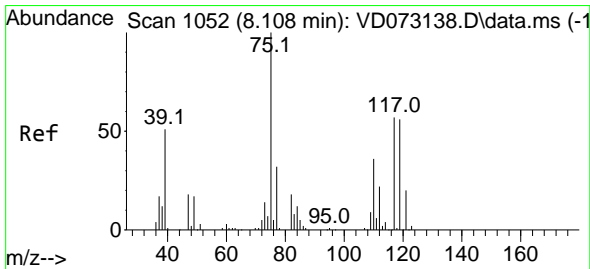
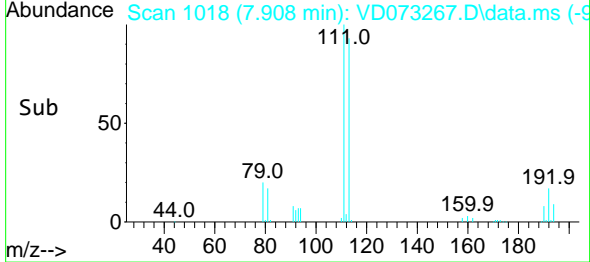
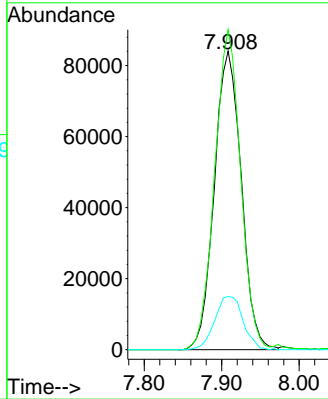
#35
 Dibromofluoromethane
 Concen: 53.956 ug/l
 RT: 7.908 min Scan# 1029
 Delta R.T. -0.006 min
 Lab File: VD073267.D
 Acq: 22 May 2022 10:55

Instrument : MSVOA_D
 ClientSampleId : P024-SS010-0006-01



Tgt Ion: 113 Resp: 203282

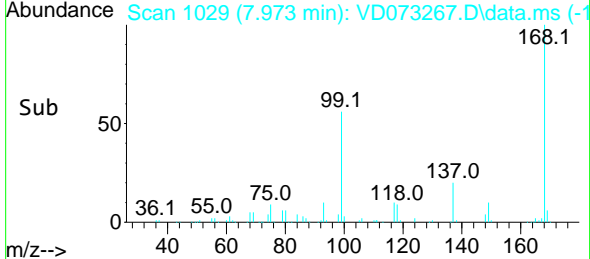
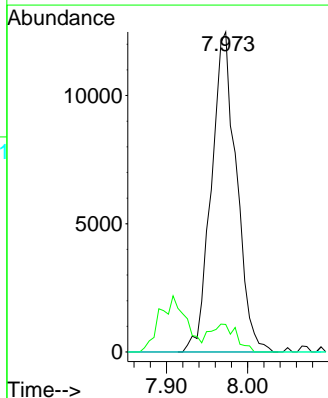
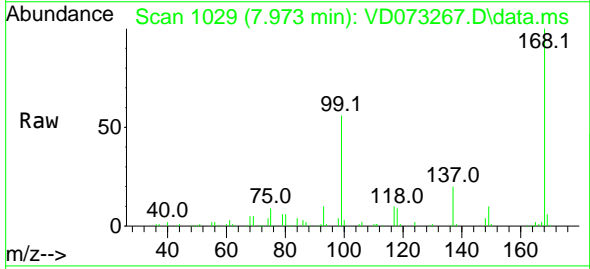
Ion	Ratio	Lower	Upper
113	100		
111	103.0	83.8	125.6
192	18.8	14.6	21.8

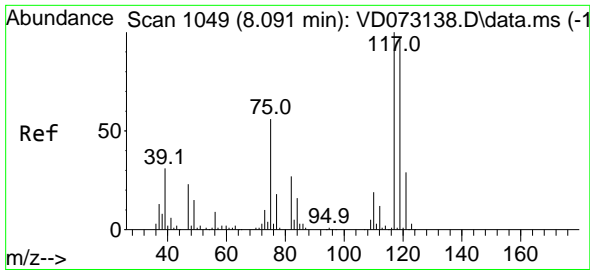


#36
 1,1-Dichloropropene
 Concen: 4.735 ug/l
 RT: 7.973 min Scan# 1029
 Delta R.T. -0.135 min
 Lab File: VD073267.D
 Acq: 22 May 2022 10:55

Tgt Ion: 75 Resp: 26832

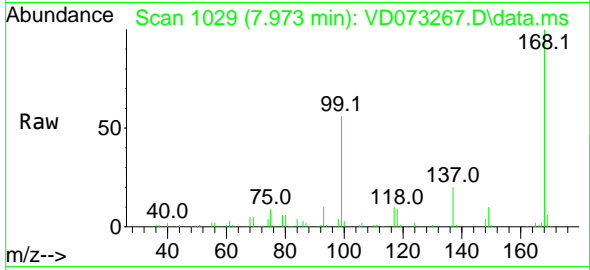
Ion	Ratio	Lower	Upper
75	100		
110	9.3	16.4	49.1#
77	0.0	24.2	36.2#



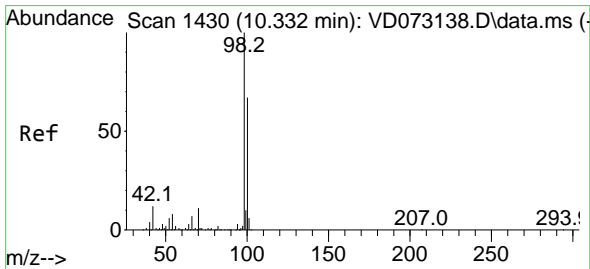
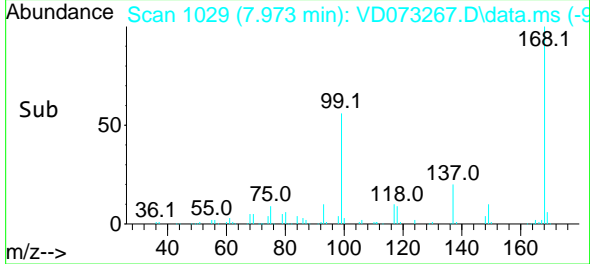
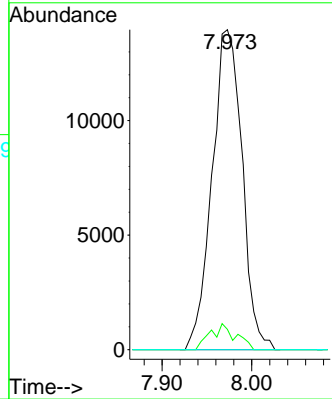


#38
 Carbon Tetrachloride
 Concen: 5.652 ug/l
 RT: 7.973 min Scan# 1029
 Delta R.T. -0.118 min
 Lab File: VD073267.D
 Acq: 22 May 2022 10:55

Instrument : MSVOA_D
 ClientSampleId : P024-SS010-0006-01

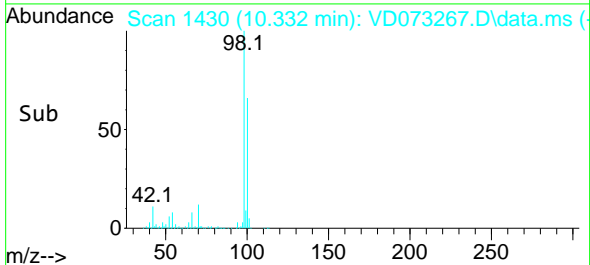
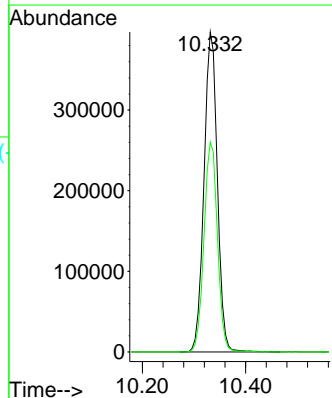
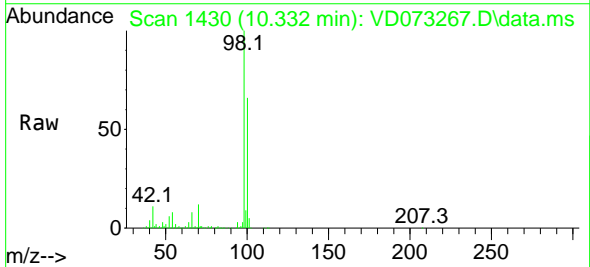


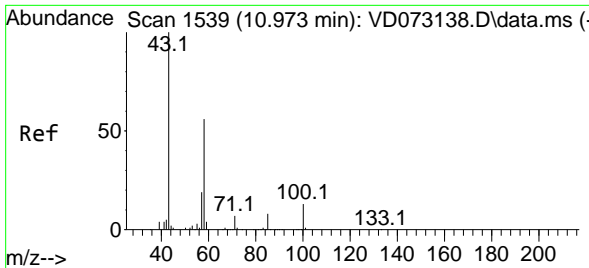
Tgt Ion:117 Resp: 32467
 Ion Ratio Lower Upper
 117 100
 119 6.3 75.8 113.6#
 121 0.0 24.5 36.7#



#50
 Toluene-d8
 Concen: 51.192 ug/l
 RT: 10.332 min Scan# 1430
 Delta R.T. -0.000 min
 Lab File: VD073267.D
 Acq: 22 May 2022 10:55

Tgt Ion: 98 Resp: 710968
 Ion Ratio Lower Upper
 98 100
 100 66.3 52.4 78.6

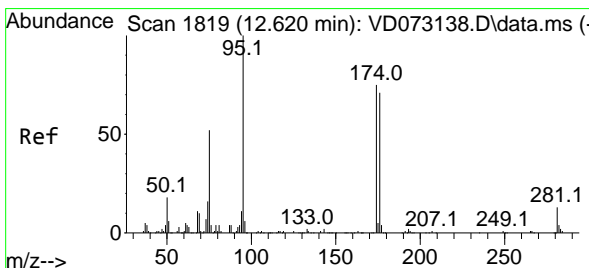
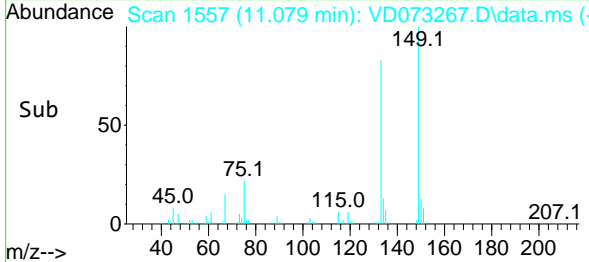
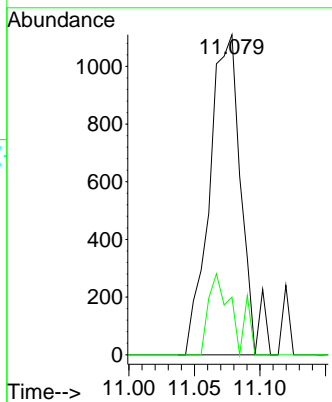
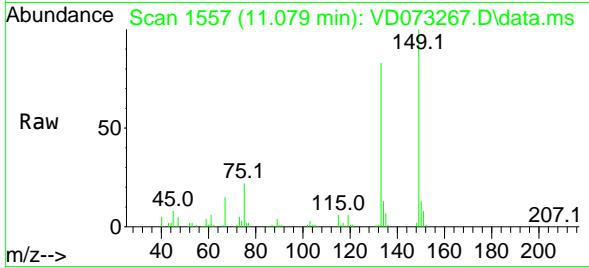




#59
 2-Hexanone
 Concen: 1.322 ug/l
 RT: 11.079 min Scan# 11079
 Delta R.T. 0.106 min
 Lab File: VD073267.D
 Acq: 22 May 2022 10:55

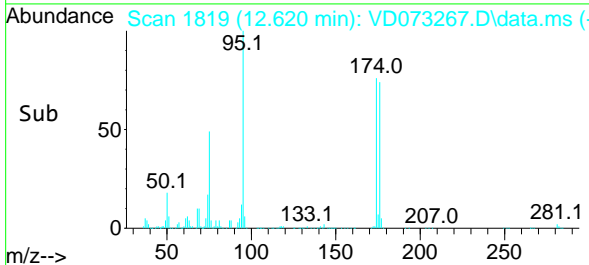
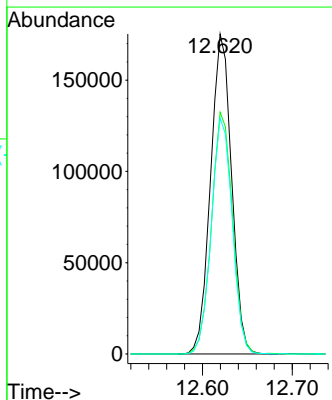
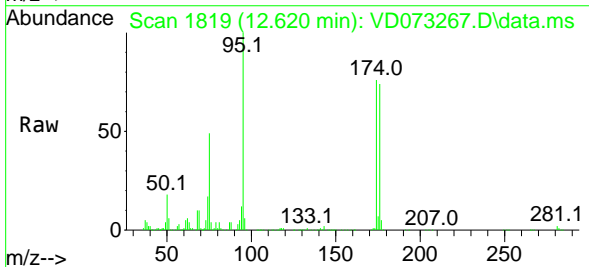
Instrument : MSVOA_D
 ClientSampleId : P024-SS010-0006-01

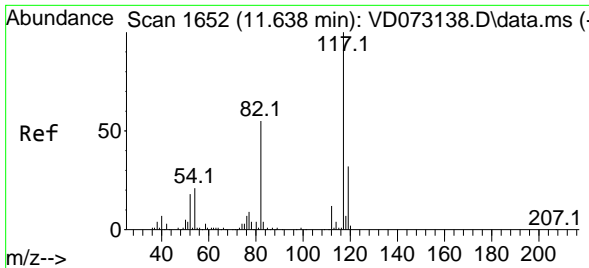
Tgt Ion: 43 Resp: 1873
 Ion Ratio Lower Upper
 43 100
 58 19.9 25.3 75.9#



#62
 4-Bromofluorobenzene
 Concen: 58.388 ug/l
 RT: 12.620 min Scan# 1819
 Delta R.T. -0.000 min
 Lab File: VD073267.D
 Acq: 22 May 2022 10:55

Tgt Ion: 95 Resp: 284581
 Ion Ratio Lower Upper
 95 100
 174 75.9 0.0 152.8
 176 73.4 0.0 145.4



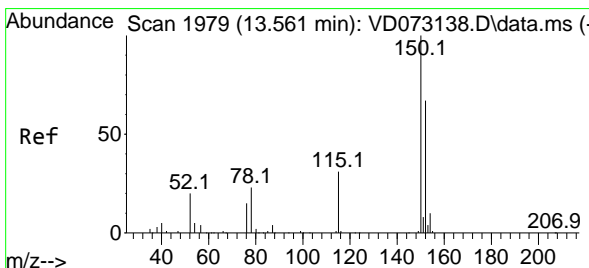
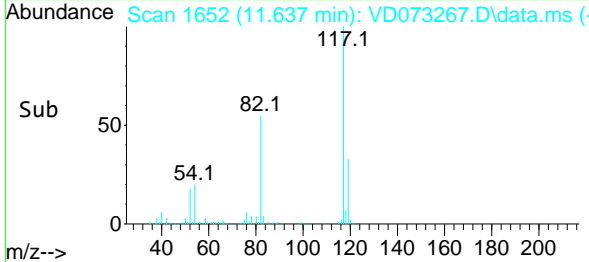
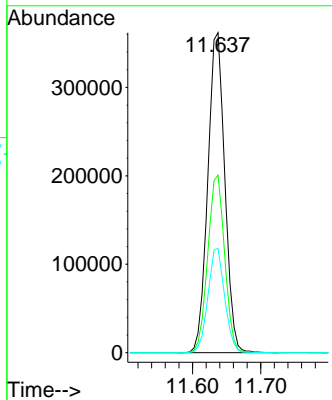
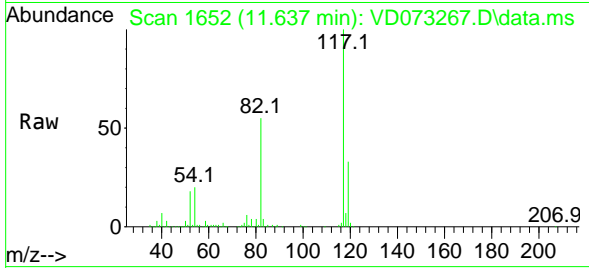


#63
 Chlorobenzene-d5
 Concen: 50.000 ug/l
 RT: 11.637 min Scan# 11
 Delta R.T. -0.001 min
 Lab File: VD073267.D
 Acq: 22 May 2022 10:55

Instrument : MSVOA_D
 ClientSampleId : P024-SS010-0006-01

Tgt Ion:117 Resp: 629262

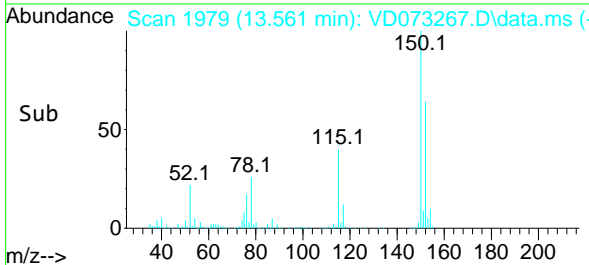
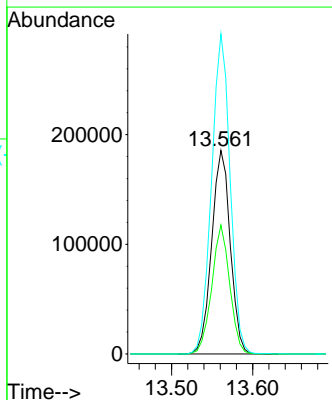
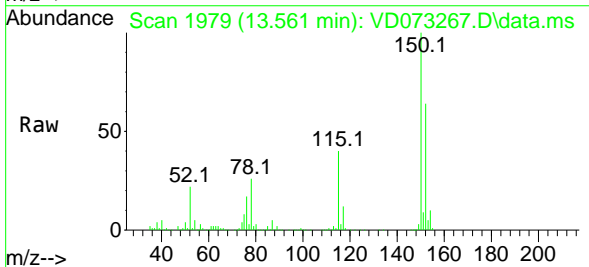
Ion	Ratio	Lower	Upper
117	100		
82	55.5	45.3	67.9
119	32.6	26.6	40.0

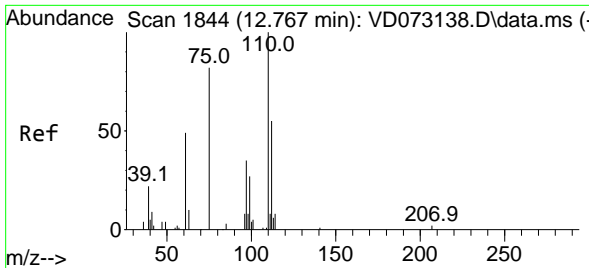


#72
 1,4-Dichlorobenzene-d4
 Concen: 50.000 ug/l
 RT: 13.561 min Scan# 1979
 Delta R.T. -0.000 min
 Lab File: VD073267.D
 Acq: 22 May 2022 10:55

Tgt Ion:152 Resp: 295371

Ion	Ratio	Lower	Upper
152	100		
115	61.0	31.3	93.8
150	157.0	0.0	348.6

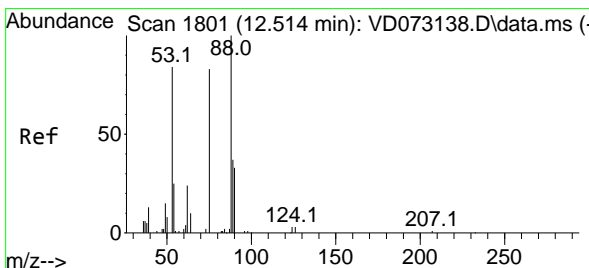
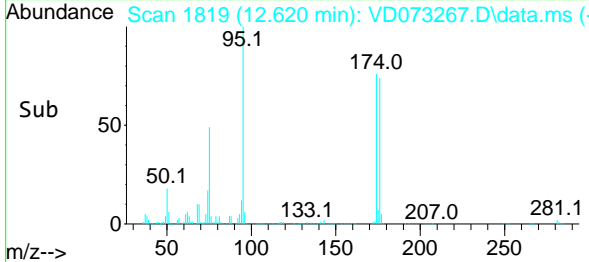
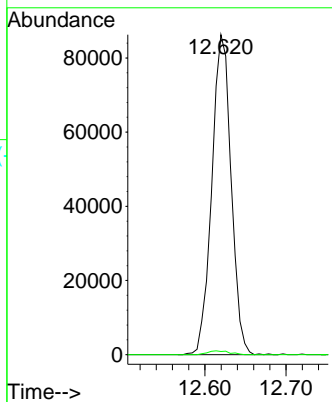
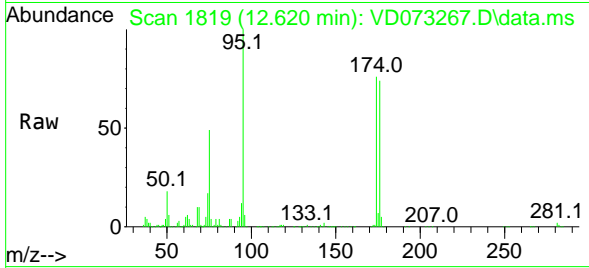




#76
 1,2,3-Trichloropropane
 Concen: 49.260 ug/l
 RT: 12.620 min Scan# 1819
 Delta R.T. -0.147 min
 Lab File: VD073267.D
 Acq: 22 May 2022 10:55

Instrument : MSVOA_D
 ClientSampleId : P024-SS010-0006-01

Tgt Ion: 75 Resp: 142761
 Ion Ratio Lower Upper
 75 100
 77 1.4 0.0 0.0#



#81
 trans-1,4-Dichloro-2-butene
 Concen: 118.259 ug/l
 RT: 12.620 min Scan# 1819
 Delta R.T. 0.106 min
 Lab File: VD073267.D
 Acq: 22 May 2022 10:55

Tgt Ion: 75 Resp: 142761
 Ion Ratio Lower Upper
 75 100
 53 0.2 86.5 129.7#
 89 0.0 33.9 50.9#

