

Data Path : Z:\voasrv\HPCHEM1\MSVOA_D\Data\VD052324\
 Data File : VD078998.D
 Acq On : 23 May 2024 12:25
 Operator : RP/MD
 Sample : P2568-14
 Misc : 5.06G/10ml/MSVOA_D/SOIL/A
 ALS Vial : 8 Sample Multiplier: 1

Instrument :
 MSVOA_D
ClientSampleId :
 BH634

Quant Time: May 24 02:14:15 2024
 Quant Method : Z:\voasrv\HPCHEM1\MSVOA_D\Method\SFAMDLM051724SMA.M
 Quant Title : SFAM01.0
 QLast Update : Fri May 24 02:12:30 2024
 Response via : Initial Calibration

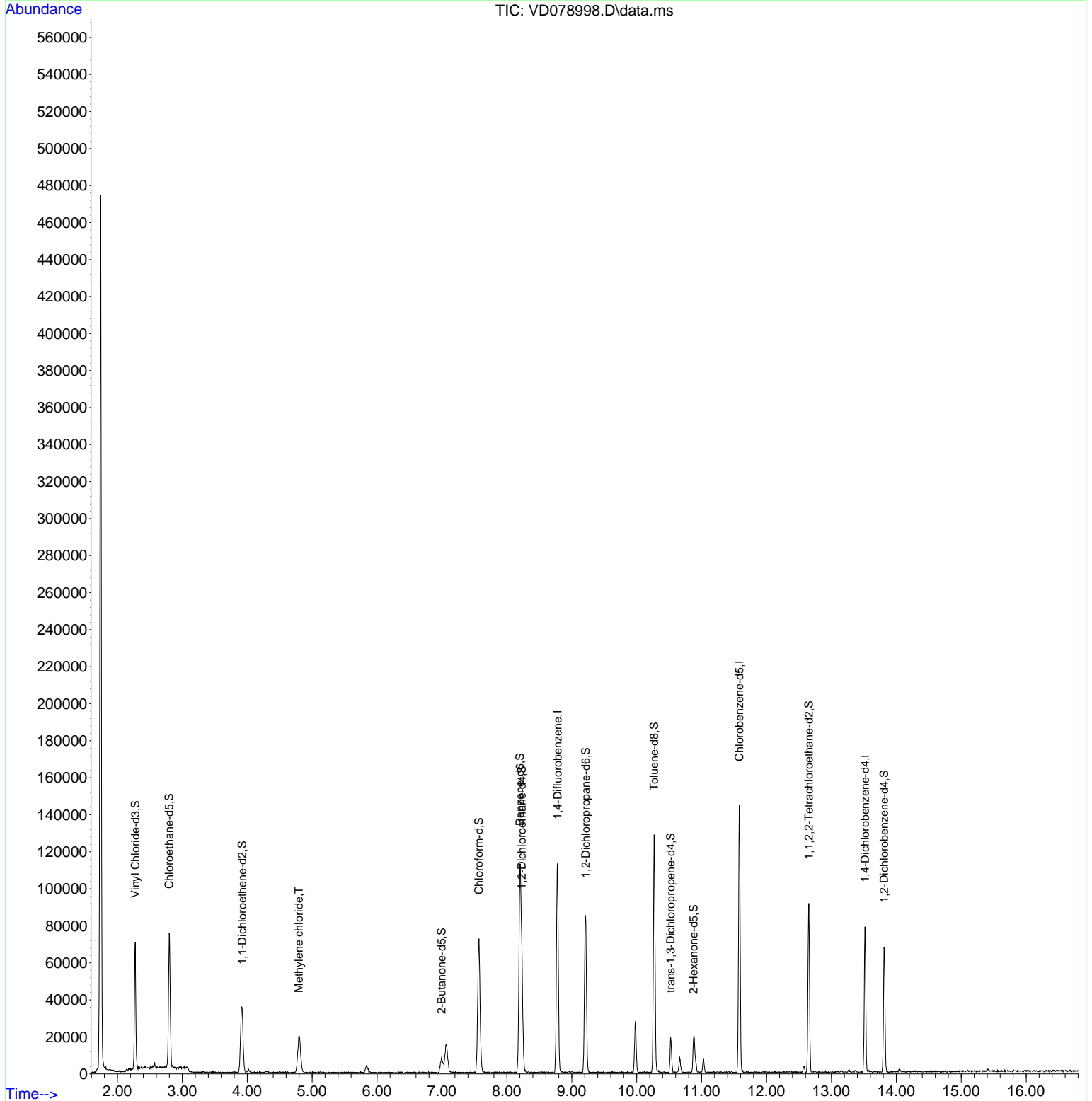
| Compound | R.T. | QIon | Response | Conc | Units | Dev(Min) |
|-------------------------------|--------|----------------|------------|-----------|-------|----------|
| ----- | | | | | | |
| Internal Standards | | | | | | |
| 1) 1,4-Difluorobenzene | 8.781 | 114 | 107044 | 25.000 | ug/L | 0.00 |
| 28) Chlorobenzene-d5 | 11.581 | 117 | 88397 | 25.000 | ug/L | 0.00 |
| 58) 1,4-Dichlorobenzene-d4 | 13.516 | 152 | 21353 | 25.000 | ug/L | 0.00 |
| System Monitoring Compounds | | | | | | |
| 4) Vinyl Chloride-d3 | 2.275 | 65 | 60276 | 22.970 | ug/L | 0.00 |
| Spiked Amount | 25.000 | Range 30 - 150 | Recovery = | 91.880% | | |
| 7) Chloroethane-d5 | 2.799 | 69 | 76233 | 27.139 | ug/L | 0.00 |
| Spiked Amount | 25.000 | Range 30 - 150 | Recovery = | 108.560% | | |
| 11) 1,1-Dichloroethene-d2 | 3.922 | 65 | 10476 | 20.466 | ug/L | 0.00 |
| Spiked Amount | 25.000 | Range 45 - 110 | Recovery = | 81.880% | | |
| 21) 2-Butanone-d5 | 6.993 | 46 | 10963 | 29.516 | ug/L | 0.01 |
| Spiked Amount | 50.000 | Range 20 - 135 | Recovery = | 59.040% | | |
| 24) Chloroform-d | 7.569 | 84 | 76433 | 23.985 | ug/L | 0.00 |
| Spiked Amount | 25.000 | Range 40 - 150 | Recovery = | 95.960% | | |
| 26) 1,2-Dichloroethane-d4 | 8.228 | 65 | 40114 | 26.507 | ug/L | 0.00 |
| Spiked Amount | 25.000 | Range 70 - 130 | Recovery = | 106.040% | | |
| 32) Benzene-d6 | 8.199 | 84 | 125638 | 27.855 | ug/L | 0.00 |
| Spiked Amount | 25.000 | Range 20 - 135 | Recovery = | 111.440% | | |
| 36) 1,2-Dichloropropane-d6 | 9.216 | 67 | 44874 | 32.652 | ug/L | 0.00 |
| Spiked Amount | 25.000 | Range 70 - 120 | Recovery = | 130.600%# | | |
| 41) Toluene-d8 | 10.269 | 98 | 90415 | 21.747 | ug/L | 0.00 |
| Spiked Amount | 25.000 | Range 30 - 130 | Recovery = | 87.000% | | |
| 43) trans-1,3-Dichloroprop... | 10.522 | 79 | 10969 | 17.327 | ug/L | 0.00 |
| Spiked Amount | 25.000 | Range 30 - 135 | Recovery = | 69.320% | | |
| 47) 2-Hexanone-d5 | 10.875 | 63 | 6577 | 23.878 | ug/L | 0.00 |
| Spiked Amount | 50.000 | Range 20 - 135 | Recovery = | 47.760% | | |
| 56) 1,1,2,2-Tetrachloroeth... | 12.651 | 84 | 47787 | 30.567 | ug/L | 0.00 |
| Spiked Amount | 25.000 | Range 45 - 120 | Recovery = | 122.280%# | | |
| 66) 1,2-Dichlorobenzene-d4 | 13.810 | 152 | 20366 | 28.101 | ug/L | 0.00 |
| Spiked Amount | 25.000 | Range 75 - 120 | Recovery = | 112.400% | | |
| ----- | | | | | | |
| Target Compounds | | | | | | Qvalue |
| 16) Methylene chloride | 4.793 | 84 | 17675 | 6.971 | ug/L | 91 |
| ----- | | | | | | |

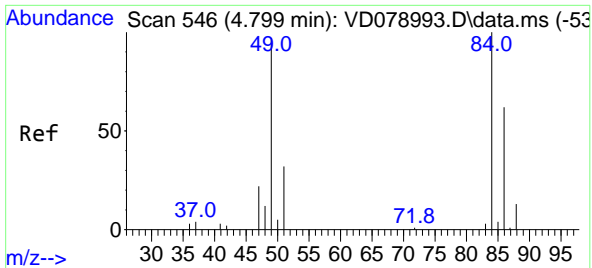
(#) = qualifier out of range (m) = manual integration (+) = signals summed

Data Path : Z:\voasrv\HPCHEM1\MSVOA_D\Data\VD052324\
 Data File : VD078998.D
 Acq On : 23 May 2024 12:25
 Operator : RP/MD
 Sample : P2568-14
 Misc : 5.06G/10ml/MSVOA_D/SOIL/A
 ALS Vial : 8 Sample Multiplier: 1

Instrument :
 MSVOA_D
 ClientSampleId :
 BH634

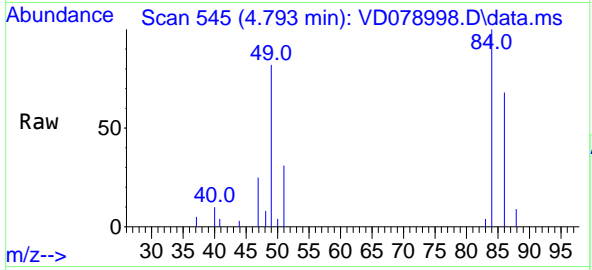
Quant Time: May 24 02:14:15 2024
 Quant Method : Z:\voasrv\HPCHEM1\MSVOA_D\Method\SFAMDLM051724SMA.M
 Quant Title : SFAM01.0
 QLast Update : Fri May 24 02:12:30 2024
 Response via : Initial Calibration





#16
 Methylene chloride
 Concen: 6.971 ug/L
 RT: 4.793 min Scan# 54
 Delta R.T. -0.006 min
 Lab File: VD078998.D
 Acq: 23 May 2024 12:25

Instrument : MSVOA_D
 ClientSampleId : BH634



Tgt Ion: 84 Resp: 17675

| Ion | Ratio | Lower | Upper |
|-----|-------|-------|-------|
| 84 | 100 | | |
| 86 | 68.2 | 43.7 | 81.1 |
| 49 | 81.6 | 64.0 | 119.0 |

