

Data Path : Z:\voasrv\HPCHEM1\MSVOA_D\Data\VD060324\
 Data File : VD079130.D
 Acq On : 03 Jun 2024 18:08
 Operator : RP/MD
 Sample : P2642-30
 Misc : 5.46G/10ml/MSVOA_D/SOIL/A
 ALS Vial : 18 Sample Multiplier: 1

Instrument :
 MSVOA_D
 ClientSampleId :
 A4BH6

Integration Parameters: LSCINT.P

Integrator: RTE
 Smoothing : OFF
 Sampling : 1
 Start Thrs: 0.2
 Stop Thrs : 0

Filtering: 5
 Min Area: 0 % of largest Peak
 Max Peaks: 100
 Peak Location: TOP

If leading or trailing edge < 100 prefer < Baseline drop else tangent >
 Peak separation: 5

Method : Z:\voasrv\HPCHEM1\MSVOA_D\Method\SFAMDLM052924SMA.M
 Title : SFAM01.0

Signal : TIC: VD079130.D\data.ms

peak #	R.T. min	first scan	max scan	last scan	PK TY	peak height	corr. area	corr. % max.	% of total
1	1.740	11	26	36	rBV	569114	891740	100.00%	13.733%
2	2.157	93	97	99	rVV3	1903	2960	0.33%	0.046%
3	2.269	110	116	123	rBV	164711	237625	26.65%	3.660%
4	2.793	199	205	214	rVB	141830	259725	29.13%	4.000%
5	3.293	288	290	293	rBV	602	557	0.06%	0.009%
6	3.422	307	312	315	rVB	689	846	0.09%	0.013%
7	3.463	315	319	323	rBV2	655	1131	0.13%	0.017%
8	3.534	328	331	334	rBV2	441	633	0.07%	0.010%
9	3.657	349	352	353	rBV2	443	480	0.05%	0.007%
10	3.910	384	395	406	rBV2	83518	217152	24.35%	3.344%
11	4.093	422	426	428	rBV4	899	1008	0.11%	0.016%
12	4.263	453	455	458	rVB2	679	589	0.07%	0.009%
13	4.463	488	489	491	rBV2	539	409	0.05%	0.006%
14	4.563	503	506	507	rBV2	696	684	0.08%	0.011%
15	4.628	513	517	519	rBV	562	559	0.06%	0.009%
16	4.793	535	545	554	rVB5	7789	22906	2.57%	0.353%
17	5.046	585	588	590	rBV	452	417	0.05%	0.006%
18	5.187	611	612	616	rVB	723	514	0.06%	0.008%
19	5.363	640	642	645	rBV	419	467	0.05%	0.007%
20	5.704	698	700	701	rBV2	453	417	0.05%	0.006%
21	5.893	730	732	734	rVB2	471	425	0.05%	0.007%
22	5.910	734	735	738	rBV	624	471	0.05%	0.007%
23	6.028	754	755	759	rVB2	504	531	0.06%	0.008%
24	6.075	759	763	766	rBV	723	939	0.11%	0.014%
25	6.110	766	769	770	rBV	611	468	0.05%	0.007%
26	6.216	784	787	788	rVB	550	400	0.04%	0.006%
27	6.275	794	797	800	rBV2	851	1008	0.11%	0.016%
28	6.404	818	819	824	rVV	618	711	0.08%	0.011%
29	6.475	828	831	833	rVB	551	626	0.07%	0.010%
30	6.510	835	837	839	rBV	585	474	0.05%	0.007%
31	6.722	870	873	875	rBV2	418	496	0.06%	0.008%
32	6.881	899	900	901	rBV	646	415	0.05%	0.006%
33	6.981	906	917	924	rBV	12690	33701	3.78%	0.519%
34	7.104	936	938	941	rVB	923	854	0.10%	0.013%
35	7.398	986	988	990	rBV	489	449	0.05%	0.007%
36	7.428	990	993	995	rBV	407	460	0.05%	0.007%

Data Path : Z:\voasrv\HPCHEM1\MSVOA_D\Data\VD060324\
 Data File : VD079130.D
 Acq On : 03 Jun 2024 18:08
 Operator : RP/MD
 Sample : P2642-30
 Misc : 5.46G/10ml/MSVOA_D/SOIL/A
 ALS Vial : 18 Sample Multiplier: 1

Instrument :
 MSVOA_D
 ClientSampleId :
 A4BH6

Integration Parameters: LSCINT.P

Integrator: RTE
 Smoothing : OFF
 Sampling : 1
 Start Thrs: 0.2
 Stop Thrs : 0

Filtering: 5
 Min Area: 0 % of largest Peak
 Max Peaks: 100
 Peak Location: TOP

If leading or trailing edge < 100 prefer < Baseline drop else tangent >
 Peak separation: 5

Method : Z:\voasrv\HPCHEM1\MSVOA_D\Method\SFAMDLM052924SMA.M
 Title : SFAM01.0

37	7.563	1005	1016	1031	rBV	126201	326570	36.62%	5.029%
38	7.681	1033	1036	1037	rBV2	495	522	0.06%	0.008%
39	7.881	1068	1070	1073	rBV2	704	681	0.08%	0.010%
40	7.940	1078	1080	1081	rBV	825	531	0.06%	0.008%
41	7.998	1088	1090	1094	rVB	721	629	0.07%	0.010%
42	8.040	1096	1097	1100	rVB2	446	400	0.04%	0.006%
43	8.087	1103	1105	1107	rBV	554	682	0.08%	0.011%
44	8.198	1115	1124	1138	rVB2	237271	683311	76.63%	10.523%
45	8.498	1169	1175	1176	rBV2	578	896	0.10%	0.014%
46	8.598	1190	1192	1195	rBV	615	695	0.08%	0.011%
47	8.622	1195	1196	1198	rVB	703	392	0.04%	0.006%
48	8.775	1213	1222	1233	rBV	312093	615411	69.01%	9.478%
49	8.981	1255	1257	1259	rBV	917	453	0.05%	0.007%
50	9.004	1259	1261	1264	rBV	486	607	0.07%	0.009%
51	9.210	1287	1296	1304	rBV	154154	322021	36.11%	4.959%
52	9.287	1307	1309	1310	rBV	577	525	0.06%	0.008%
53	9.445	1332	1336	1337	rBV2	500	637	0.07%	0.010%
54	9.651	1368	1371	1375	rBV2	508	701	0.08%	0.011%
55	9.692	1375	1378	1379	rBV2	505	495	0.06%	0.008%
56	9.975	1418	1426	1438	rVB	73152	132535	14.86%	2.041%
57	10.069	1438	1442	1446	rVB3	1452	2539	0.28%	0.039%
58	10.104	1446	1448	1453	rBV2	574	678	0.08%	0.010%
59	10.269	1468	1476	1485	rBV	319171	567141	63.60%	8.734%
60	10.410	1497	1500	1504	rVB2	580	632	0.07%	0.010%
61	10.522	1513	1519	1528	rBV	46368	84623	9.49%	1.303%
62	10.657	1537	1542	1548	rBV2	4501	7071	0.79%	0.109%
63	10.781	1561	1563	1565	rBV	680	411	0.05%	0.006%
64	10.875	1573	1579	1590	rVB2	48240	82982	9.31%	1.278%
65	11.122	1618	1621	1623	rVB	513	461	0.05%	0.007%
66	11.145	1623	1625	1628	rBV2	633	653	0.07%	0.010%
67	11.251	1640	1643	1645	rBV2	547	741	0.08%	0.011%
68	11.581	1691	1699	1710	rBV	445984	747907	83.87%	11.518%
69	11.780	1731	1733	1734	rBV	1694	1228	0.14%	0.019%
70	11.869	1746	1748	1751	rBV2	565	755	0.08%	0.012%
71	12.116	1787	1790	1791	rBV2	1606	1372	0.15%	0.021%
72	12.298	1819	1821	1823	rVB2	726	426	0.05%	0.007%
73	12.504	1854	1856	1859	rBV2	733	810	0.09%	0.012%
74	12.575	1864	1868	1873	rVV3	4260	7338	0.82%	0.113%
75	12.645	1874	1880	1888	rVB	119498	203127	22.78%	3.128%
76	12.769	1898	1901	1905	rVB2	621	704	0.08%	0.011%

Data Path : Z:\voasrv\HPCHEM1\MSVOA_D\Data\VD060324\
 Data File : VD079130.D
 Acq On : 03 Jun 2024 18:08
 Operator : RP/MD
 Sample : P2642-30
 Misc : 5.46G/10ml/MSVOA_D/SOIL/A
 ALS Vial : 18 Sample Multiplier: 1

Instrument :
 MSVOA_D
 ClientSampleId :
 A4BH6

Integration Parameters: LSCINT.P

Integrator: RTE
 Smoothing : OFF Filtering: 5
 Sampling : 1 Min Area: 0 % of largest Peak
 Start Thrs: 0.2 Max Peaks: 100
 Stop Thrs : 0 Peak Location: TOP

If leading or trailing edge < 100 prefer < Baseline drop else tangent >
 Peak separation: 5

Method : Z:\voasrv\HPCHEM1\MSVOA_D\Method\SFAMDLM052924SMA.M
 Title : SFAM01.0

77	12.898	1920	1923	1925	rBV	930	838	0.09%	0.013%
78	13.157	1964	1967	1972	rBV2	1386	1418	0.16%	0.022%
79	13.369	2000	2003	2008	rVB3	2399	3577	0.40%	0.055%
80	13.516	2021	2028	2034	rBV	376283	596304	66.87%	9.183%
81	13.816	2072	2079	2087	rVV	232509	393645	44.14%	6.062%
82	14.051	2114	2119	2121	rBV3	1778	2494	0.28%	0.038%
83	14.227	2146	2149	2150	rBV2	1041	689	0.08%	0.011%
84	14.433	2180	2184	2185	rBV	684	801	0.09%	0.012%
85	14.569	2206	2207	2210	rBV2	816	737	0.08%	0.011%
86	14.592	2210	2211	2213	rBV	889	473	0.05%	0.007%
87	14.633	2216	2218	2220	rBV2	710	637	0.07%	0.010%
88	14.727	2233	2234	2238	rVB2	982	778	0.09%	0.012%
89	14.833	2250	2252	2254	rBV	684	551	0.06%	0.008%
90	14.898	2261	2263	2265	rBV2	662	477	0.05%	0.007%
91	14.986	2276	2278	2282	rBV3	894	1124	0.13%	0.017%
92	15.127	2301	2302	2303	rBV	912	426	0.05%	0.007%
93	15.169	2307	2309	2312	rVB3	812	729	0.08%	0.011%
94	15.369	2342	2343	2345	rBV2	839	435	0.05%	0.007%
95	15.457	2355	2358	2359	rBV	874	945	0.11%	0.015%
96	15.510	2365	2367	2370	rVB2	968	594	0.07%	0.009%
97	15.651	2390	2391	2394	rVB	1004	444	0.05%	0.007%
98	15.674	2394	2395	2397	rBV2	1026	606	0.07%	0.009%
99	16.321	2503	2505	2506	rBV	800	499	0.06%	0.008%
100	16.521	2537	2539	2540	rBV2	849	598	0.07%	0.009%

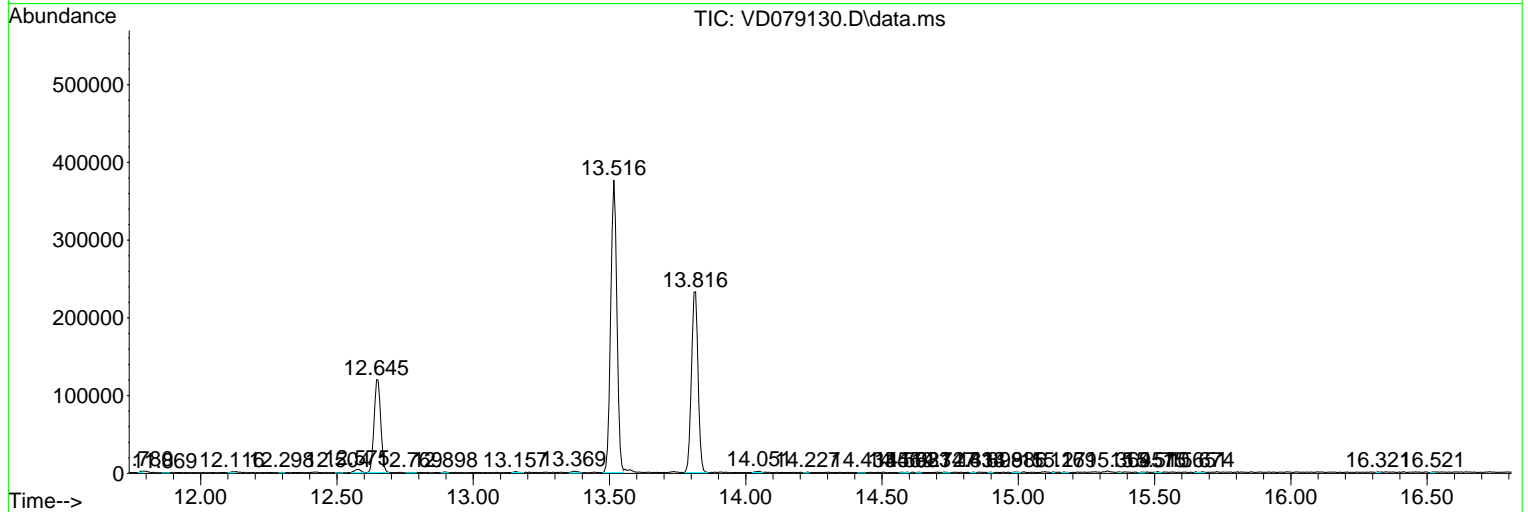
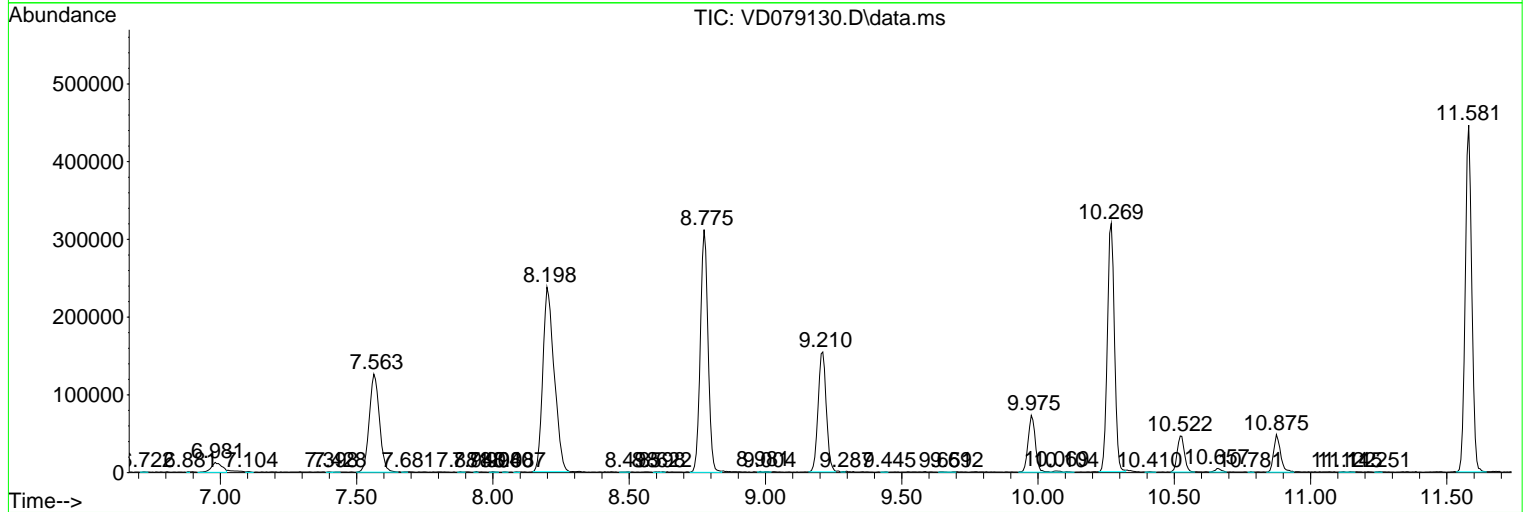
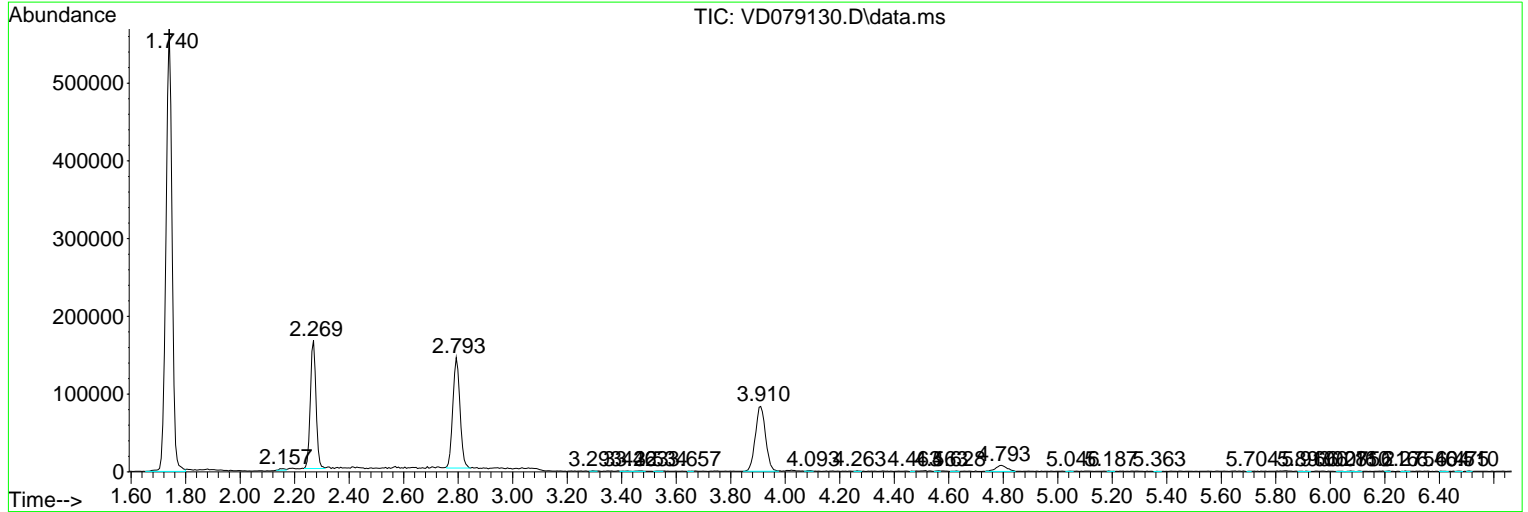
Sum of corrected areas: 6493359

Data Path : Z:\voasrv\HPCHEM1\MSVOA_D\Data\VD060324\
 Data File : VD079130.D
 Acq On : 03 Jun 2024 18:08
 Operator : RP/MD
 Sample : P2642-30
 Misc : 5.46G/10ml/MSVOA_D/SOIL/A
 ALS Vial : 18 Sample Multiplier: 1

Instrument :
 MSVOA_D
 ClientSampleId :
 A4BH6

Quant Method : Z:\voasrv\HPCHEM1\MSVOA_D\Method\SFAMDLM052924SMA.M
 Quant Title : SFAM01.0

TIC Library : C:\Database\NIST20.L
 TIC Integration Parameters: LSCINT.P



Library Search Compound Report

Data Path : Z:\voasrv\HPCHEM1\MSVOA_D\Data\VD060324\
Data File : VD079130.D
Acq On : 03 Jun 2024 18:08
Operator : RP/MD
Sample : P2642-30
Misc : 5.46G/10ml/MSVOA_D/SOIL/A
ALS Vial : 18 Sample Multiplier: 1

Instrument :
MSVOA_D
ClientSampleId :
A4BH6

Quant Method : Z:\voasrv\HPCHEM1\MSVOA_D\Method\SFAMDLM052924SMA.M
Quant Title : SFAM01.0

TIC Library : C:\Database\NIST20.L
TIC Integration Parameters: LSCINT.P

No Library Search Compounds Detected

Data Path : Z:\voasrv\HPCHEM1\MSVOA_D\Data\VD060324\
Data File : VD079130.D
Acq On : 03 Jun 2024 18:08
Operator : RP/MD
Sample : P2642-30
Misc : 5.46G/10ml/MSVOA_D/SOIL/A
ALS Vial : 18 Sample Multiplier: 1

Instrument :
MSVOA_D
ClientSampleId :
A4BH6

Quant Method : Z:\voasrv\HPCHEM1\MSVOA_D\Method\SFAMDLM052924SMA.M
Quant Title : SFAM01.0

TIC Library : C:\Database\NIST20.L
TIC Integration Parameters: LSCINT.P

TIC Top Hit name	RT	EstConc	Units	Response	--Internal Standard--		
					#	RT	Resp Conc
