

Data Path : Z:\voasrv\HPCHEM1\MSVOA_D\Data\VD061022\
 Data File : VD073525.D
 Acq On : 10 Jun 2022 13:38
 Operator : VA/SY
 Sample : N3203-01
 Misc : 5.00G/5.00ml/MSVOA_D/SOIL
 ALS Vial : 7 Sample Multiplier: 1

Instrument :
 MSVOA_D
 ClientSampleId :
 GATE-6-JET-GROUT-SPOILS

Manual Integrations
 APPROVED

Reviewed By :John Carlone 06/11/2022
 Supervised By :Mahesh Dadoda 06/13/2022

Quant Time: Jun 10 23:05:38 2022
 Quant Method : Z:\voasrv\HPCHEM1\MSVOA_D\Method\82D060922S.M
 Quant Title : SW846 8260
 QLast Update : Thu Jun 09 12:33:32 2022
 Response via : Initial Calibration

Compound	R.T.	QIon	Response	Conc	Units	Dev(Min)

Internal Standards						
1) Pentafluorobenzene	7.973	168	269567	50.000	ug/l	0.00
34) 1,4-Difluorobenzene	8.855	114	517189	50.000	ug/l	0.00
63) Chlorobenzene-d5	11.632	117	567387	50.000	ug/l	0.00
72) 1,4-Dichlorobenzene-d4	13.561	152	299813	50.000	ug/l	0.00
System Monitoring Compounds						
33) 1,2-Dichloroethane-d4	8.326	65	136902	47.325	ug/l	0.00
Spiked Amount	50.000	Range	50 - 163	Recovery	=	94.640%
35) Dibromofluoromethane	7.914	113	46253	13.908	ug/l	0.00
Spiked Amount	50.000	Range	54 - 147	Recovery	=	27.820%#
50) Toluene-d8	10.332	98	632156	50.274	ug/l	0.00
Spiked Amount	50.000	Range	49 - 140	Recovery	=	100.540%
62) 4-Bromofluorobenzene	12.620	95	282116	61.803	ug/l	0.00
Spiked Amount	50.000	Range	25 - 144	Recovery	=	123.600%
Target Compounds						
						Qvalue
16) Acetone	4.150	43	4445938	8728.565	ug/l	92
17) Carbon Disulfide	4.397	76	55825	6.696	ug/l	96
25) 2-Butanone	7.208	43	8267	11.031	ug/l #	89
26) 2,2-Dichloropropane	7.179	77	6183	1.273	ug/l #	60
31) Cyclohexane	7.967	56	18555	3.808	ug/l #	77
39) Methylcyclohexane	9.349	83	52050	8.942	ug/l	99
40) Benzene	8.350	78	15057	1.036	ug/l	97
52) Toluene	10.391	92	20378	2.187	ug/l	97
67) Ethyl Benzene	11.738	91	140963	6.910	ug/l	98
68) m/p-Xylenes	11.838	106	178773	22.330	ug/l	99
69) o-Xylene	12.167	106	62708	8.512	ug/l	97
73) Isopropylbenzene	12.467	105	35302	1.699	ug/l	99
78) n-propylbenzene	12.802	91	26537	1.026	ug/l	97
80) 1,3,5-Trimethylbenzene	12.943	105	85883	4.792	ug/l	99
84) 1,2,4-Trimethylbenzene	13.255	105	325620	18.203	ug/l	97
86) p-Isopropyltoluene	13.502	119	20327	1.075	ug/l	93

(#) = qualifier out of range (m) = manual integration (+) = signals summed

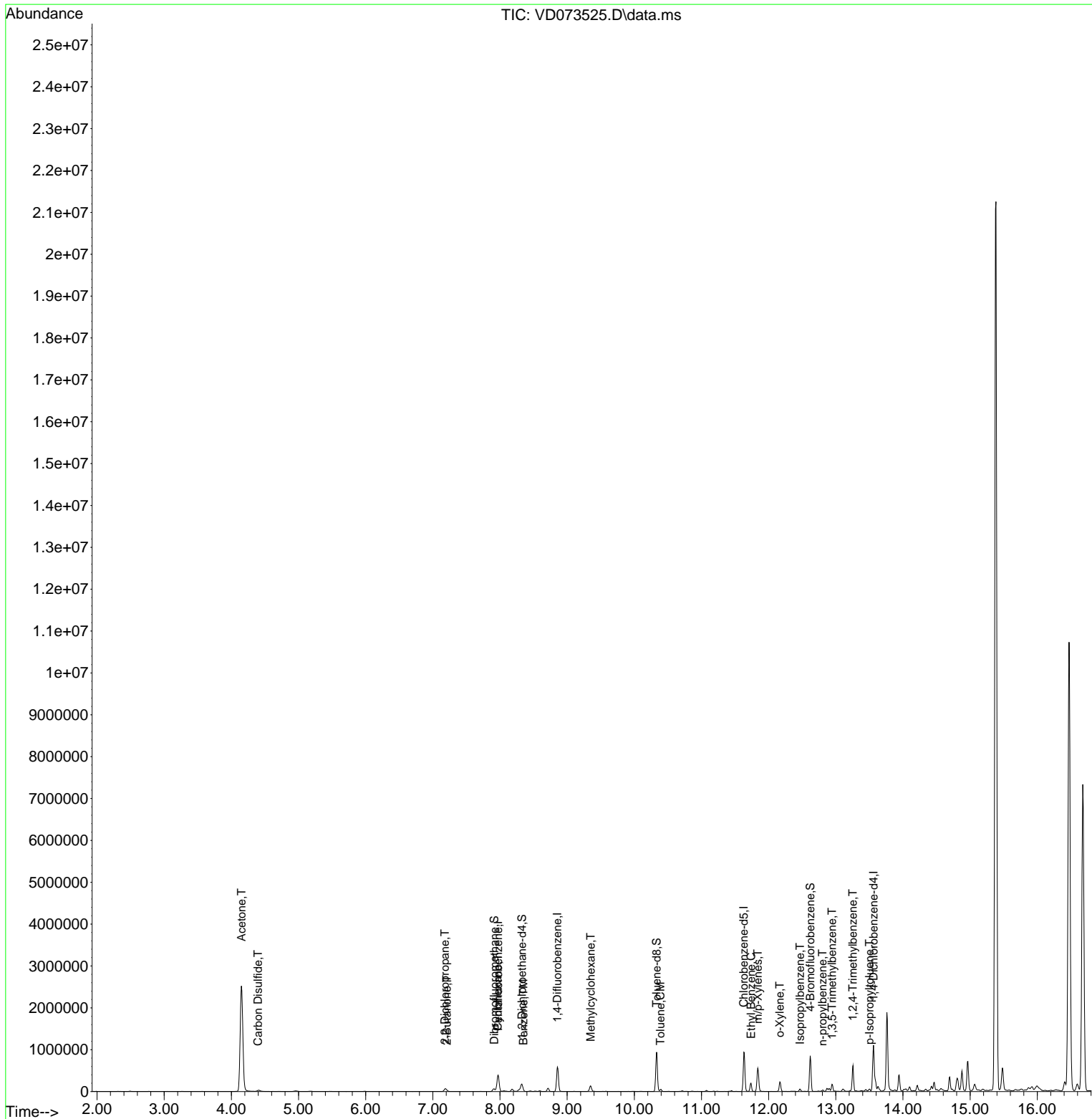
Data Path : Z:\voasrv\HPCHEM1\MSVOA_D\Data\VD061022\
 Data File : VD073525.D
 Acq On : 10 Jun 2022 13:38
 Operator : VA/SY
 Sample : N3203-01
 Misc : 5.00G/5.00ml/MSVOA_D/SOIL
 ALS Vial : 7 Sample Multiplier: 1

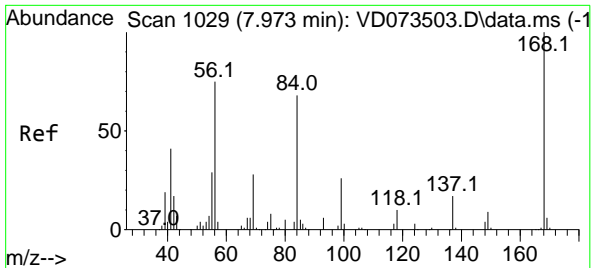
Instrument :
 MSVOA_D
 ClientSampleId :
 GATE-6-JET-GROUT-SPOILS

Quant Time: Jun 10 23:05:38 2022
 Quant Method : Z:\voasrv\HPCHEM1\MSVOA_D\Method\82D060922S.M
 Quant Title : SW846 8260
 QLast Update : Thu Jun 09 12:33:32 2022
 Response via : Initial Calibration

Manual Integrations
 APPROVED

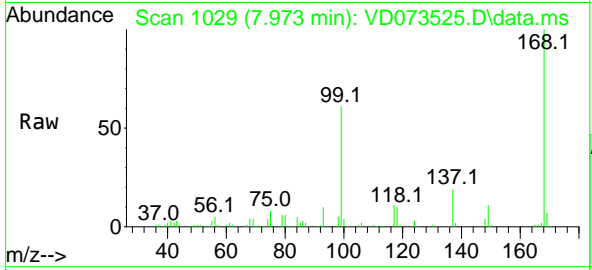
Reviewed By :John Carlone 06/11/2022
 Supervised By :Mahesh Dadoda 06/13/2022





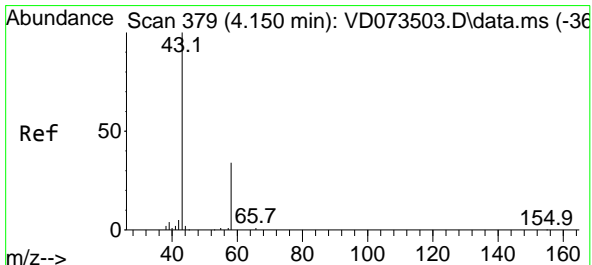
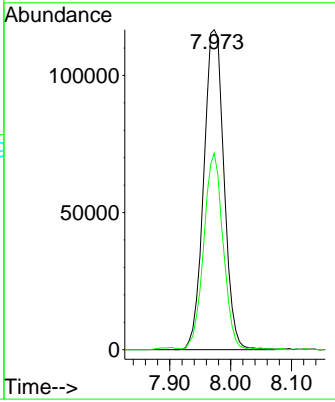
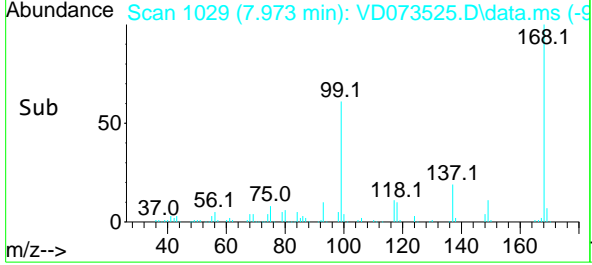
#1
 Pentafluorobenzene
 Concen: 50.000 ug/l
 RT: 7.973 min Scan# 1029
 Delta R.T. 0.000 min
 Lab File: VD073525.D
 Acq: 10 Jun 2022 13:38

Instrument : MSVOA_D
 Client Sample Id : GATE-6-JET-GROUT-SPOILS

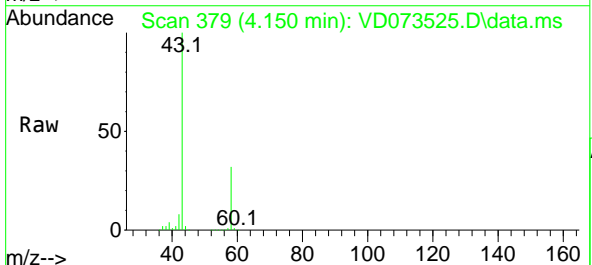


Tgt Ion: 168 Resp: 26956
 Ion Ratio Lower Upper
 168 100
 99 61.2 49.8 74.6

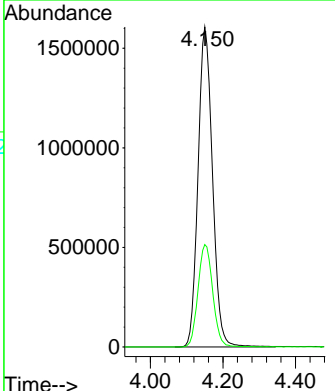
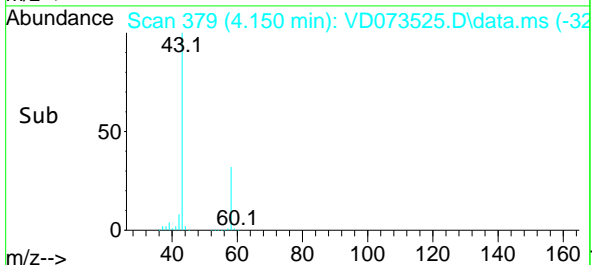
Manual Integrations
APPROVED
 Reviewed By : John Carlone 06/11/2022
 Supervised By : Mahesh Dadoda 06/13/2022

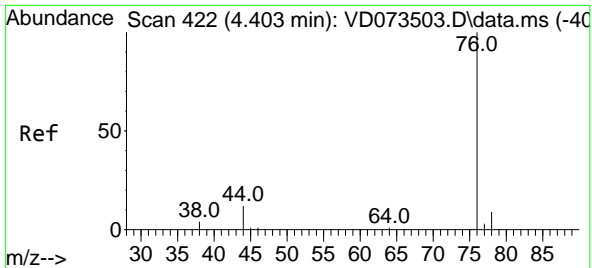


#16
 Acetone
 Concen: 8728.565 ug/l
 RT: 4.150 min Scan# 379
 Delta R.T. -0.000 min
 Lab File: VD073525.D
 Acq: 10 Jun 2022 13:38



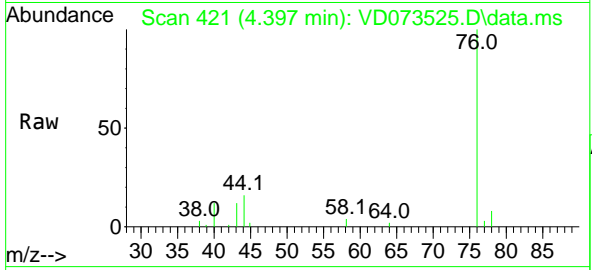
Tgt Ion: 43 Resp: 4445938
 Ion Ratio Lower Upper
 43 100
 58 32.0 22.1 33.1





#17
 Carbon Disulfide
 Concen: 6.696 ug/l
 RT: 4.397 min Scan# 421
 Delta R.T. -0.006 min
 Lab File: VD073525.D
 Acq: 10 Jun 2022 13:38

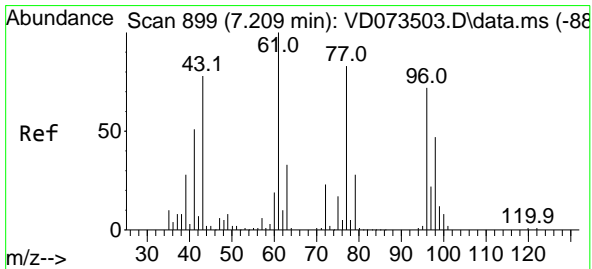
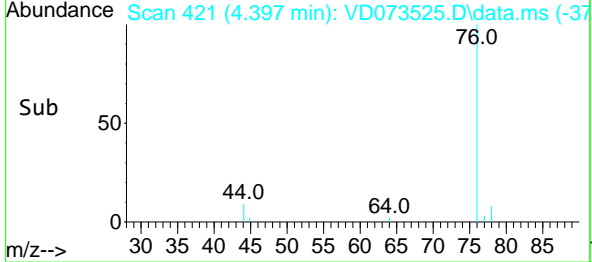
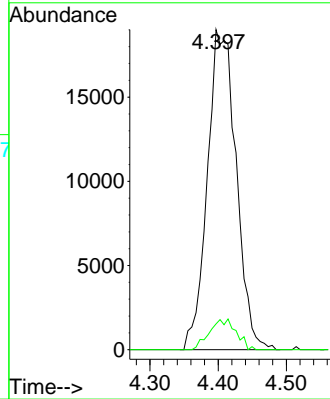
Instrument : MSVOA_D
 Client Sample Id : GATE-6-JET-GROUT-SPOILS



Tgt Ion: 76 Resp: 5582
 Ion Ratio Lower Upper
 76 100
 78 8.0 7.5 11.3

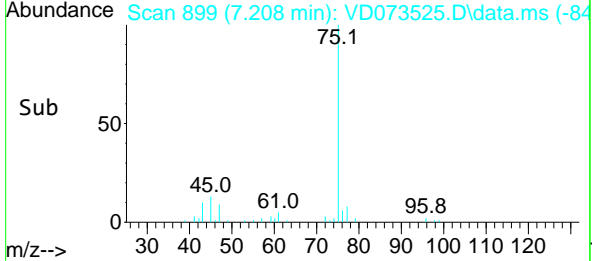
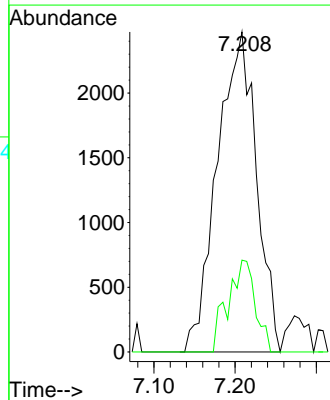
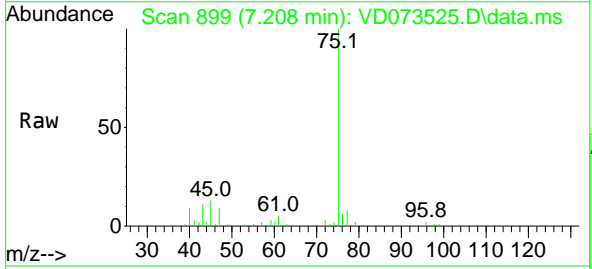
Manual Integrations
APPROVED

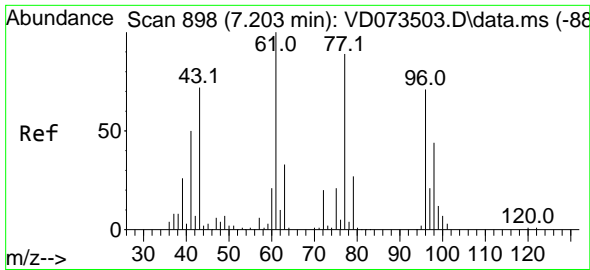
Reviewed By : John Carlone 06/11/2022
 Supervised By : Mahesh Dadoda 06/13/2022



#25
 2-Butanone
 Concen: 11.031 ug/l
 RT: 7.208 min Scan# 899
 Delta R.T. -0.001 min
 Lab File: VD073525.D
 Acq: 10 Jun 2022 13:38

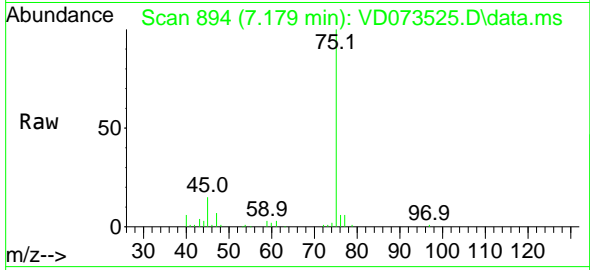
Tgt Ion: 43 Resp: 8267
 Ion Ratio Lower Upper
 43 100
 72 28.7 18.6 27.8#





#26
 2,2-Dichloropropane
 Concen: 1.273 ug/l
 RT: 7.179 min Scan# 894
 Delta R.T. -0.024 min
 Lab File: VD073525.D
 Acq: 10 Jun 2022 13:38

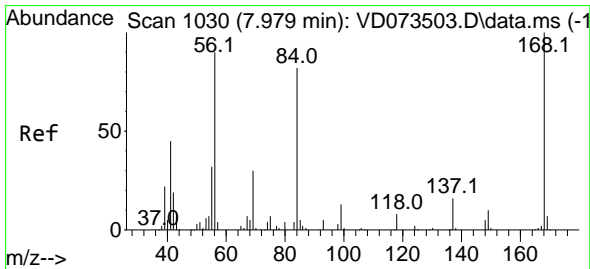
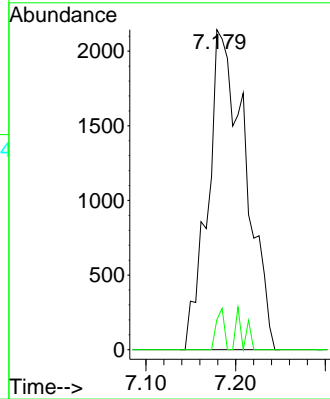
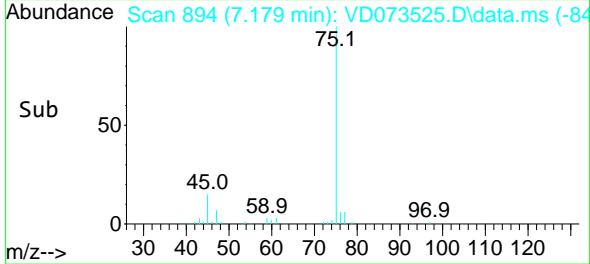
Instrument : MSVOA_D
 ClientSampleId : GATE-6-JET-GROUT-SPOILS



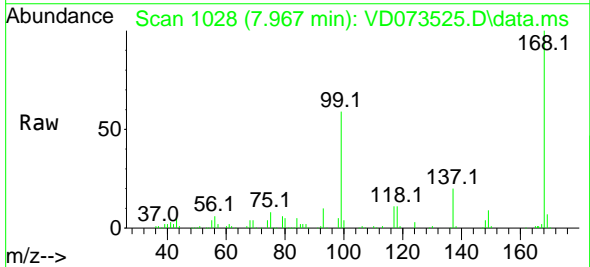
Tgt Ion: 77 Resp: 618
 Ion Ratio Lower Upper
 77 100
 97 2.7 10.8 32.4

Manual Integrations
 APPROVED

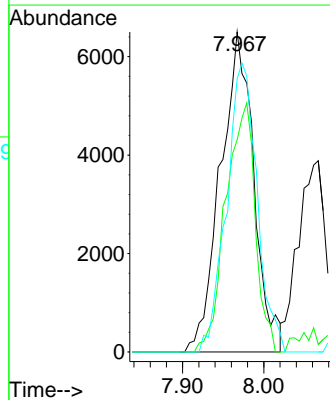
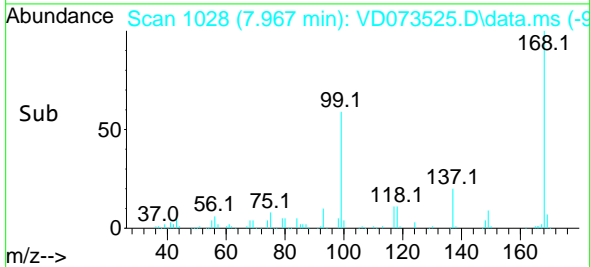
Reviewed By :John Carlone 06/11/2022
 Supervised By :Mahesh Dadoda 06/13/2022

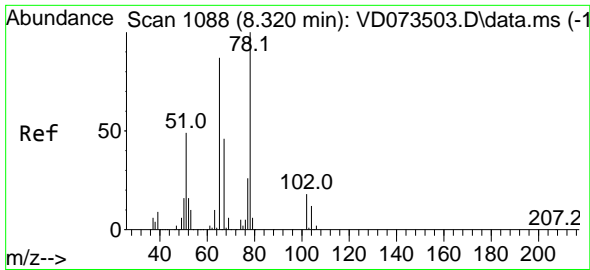


#31
 Cyclohexane
 Concen: 3.808 ug/l
 RT: 7.967 min Scan# 1028
 Delta R.T. -0.012 min
 Lab File: VD073525.D
 Acq: 10 Jun 2022 13:38



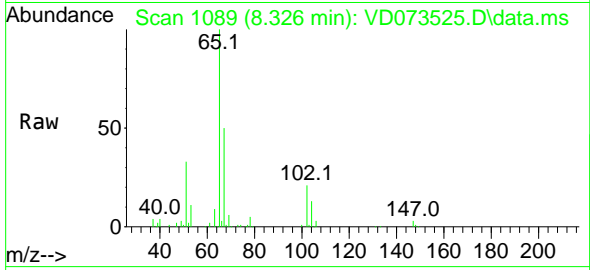
Tgt Ion: 56 Resp: 18555
 Ion Ratio Lower Upper
 56 100
 69 66.3 25.4 38.2
 84 85.4 63.0 94.4





#33
 1,2-Dichloroethane-d4
 Concen: 47.325 ug/l
 RT: 8.326 min Scan# 1088
 Delta R.T. 0.006 min
 Lab File: VD073525.D
 Acq: 10 Jun 2022 13:38

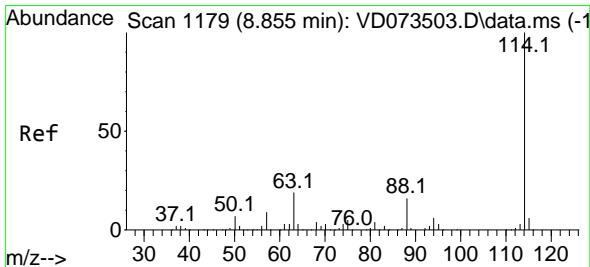
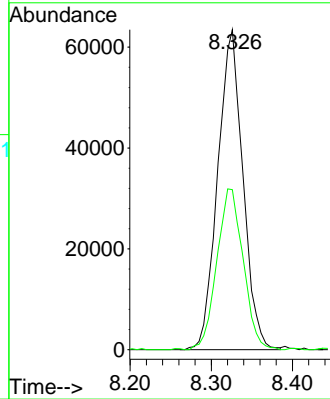
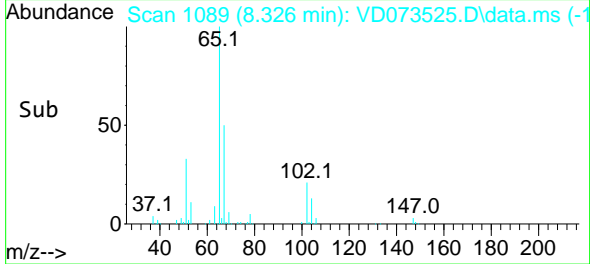
Instrument : MSVOA_D
 ClientSampleId : GATE-6-JET-GROUT-SPOILS



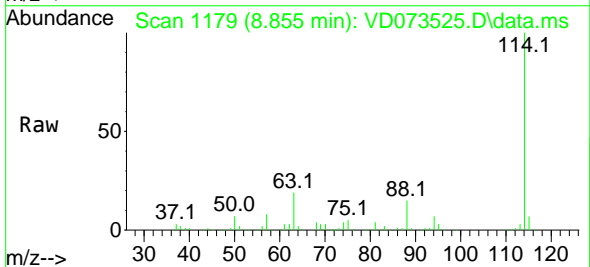
Tgt Ion: 65 Resp: 13690
 Ion Ratio Lower Upper
 65 100
 67 52.4 0.0 101.4

Manual Integrations
 APPROVED

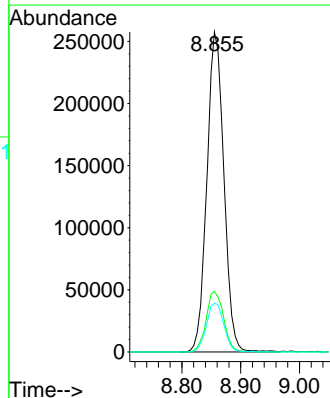
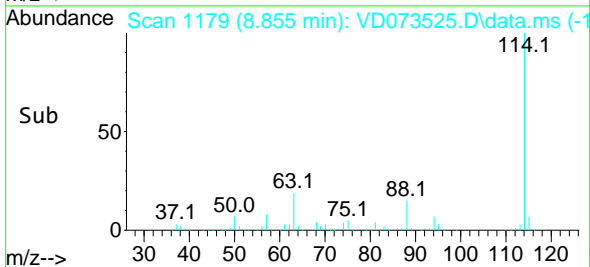
Reviewed By :John Carlone 06/11/2022
 Supervised By :Mahesh Dadoda 06/13/2022

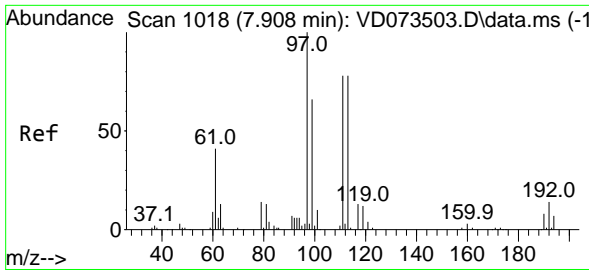


#34
 1,4-Difluorobenzene
 Concen: 50.000 ug/l
 RT: 8.855 min Scan# 1179
 Delta R.T. 0.000 min
 Lab File: VD073525.D
 Acq: 10 Jun 2022 13:38



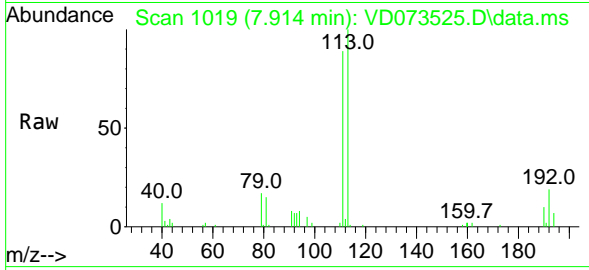
Tgt Ion:114 Resp: 517189
 Ion Ratio Lower Upper
 114 100
 63 18.9 0.0 46.6
 88 15.3 0.0 33.2





#35
 Dibromofluoromethane
 Concen: 13.908 ug/l
 RT: 7.914 min Scan# 1018
 Delta R.T. 0.006 min
 Lab File: VD073525.D
 Acq: 10 Jun 2022 13:38

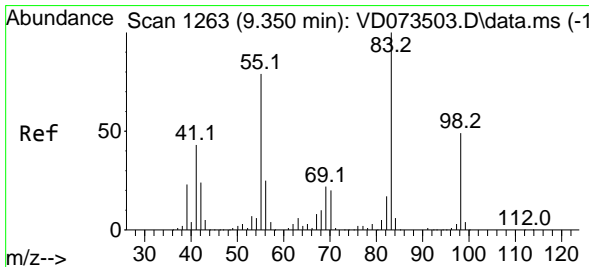
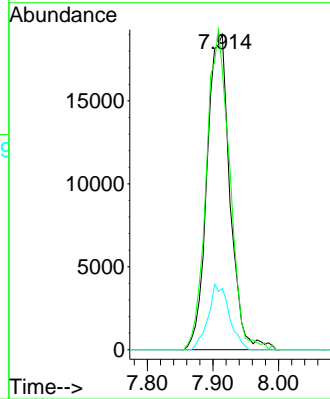
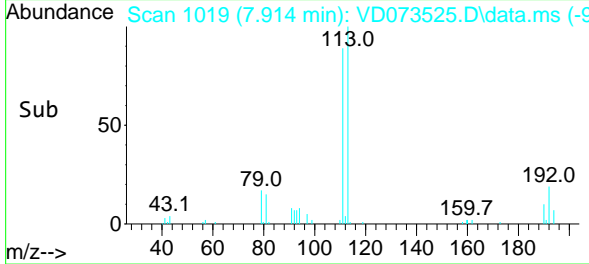
Instrument : MSVOA_D
 Client Sample Id : GATE-6-JET-GROUT-SPOILS



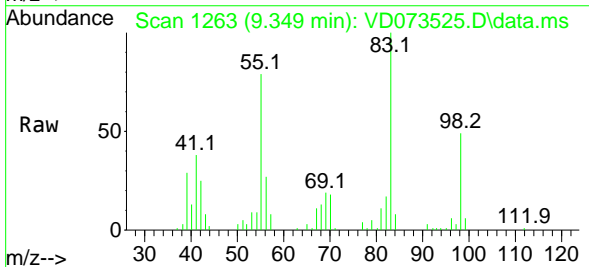
Tgt Ion: 113 Resp: 4625
 Ion Ratio Lower Upper
 113 100
 111 103.1 83.8 125.6
 192 18.9 14.6 21.8

Manual Integrations
 APPROVED

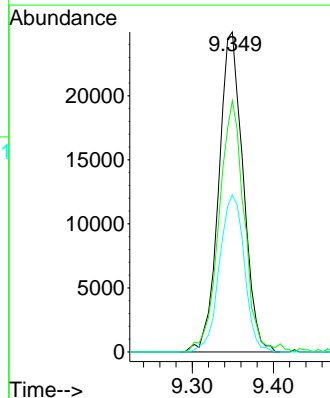
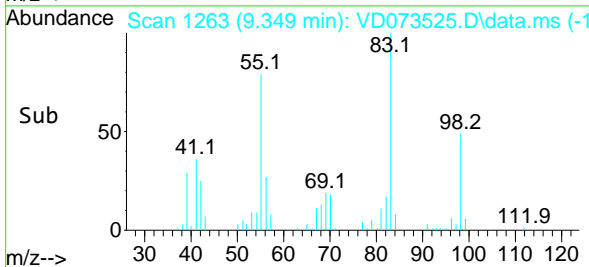
Reviewed By : John Carlone 06/11/2022
 Supervised By : Mahesh Dadoda 06/13/2022

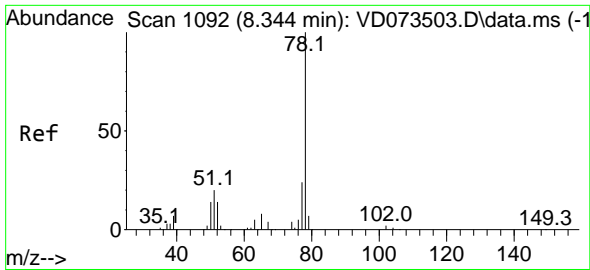


#39
 Methylcyclohexane
 Concen: 8.942 ug/l
 RT: 9.349 min Scan# 1263
 Delta R.T. -0.001 min
 Lab File: VD073525.D
 Acq: 10 Jun 2022 13:38



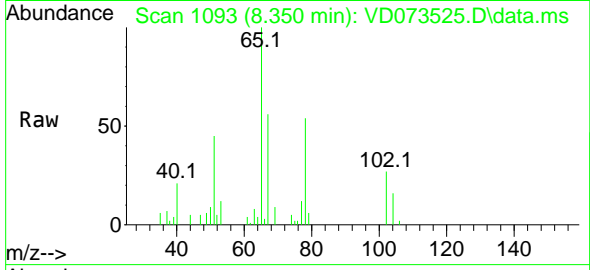
Tgt Ion: 83 Resp: 52050
 Ion Ratio Lower Upper
 83 100
 55 78.5 63.2 94.8
 98 49.1 38.2 57.4





#40
Benzene
Concen: 1.036 ug/l
RT: 8.350 min Scan# 1093
Delta R.T. 0.006 min
Lab File: VD073525.D
Acq: 10 Jun 2022 13:38

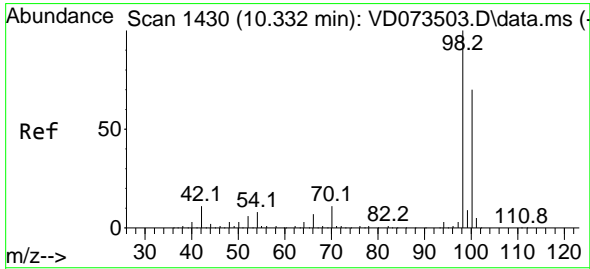
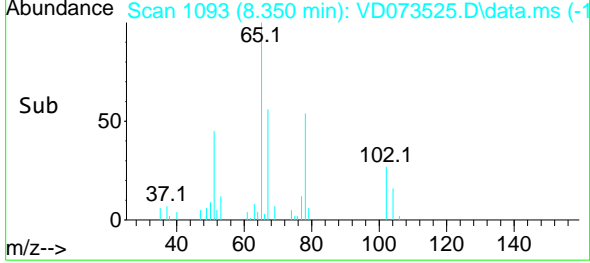
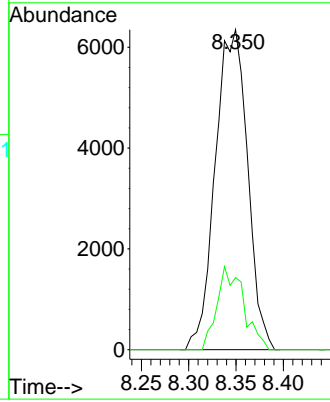
Instrument : MSVOA_D
Client Sample Id : GATE-6-JET-GROUT-SPOILS



Tgt Ion: 78 Resp: 1505
Ion Ratio Lower Upper
78 100
77 22.6 19.1 28.7

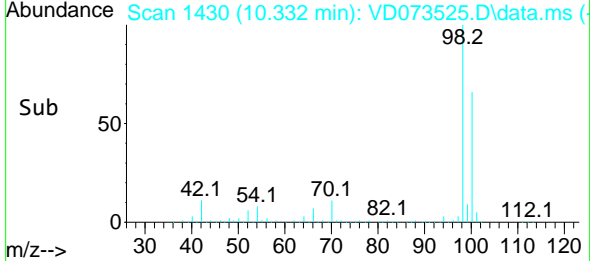
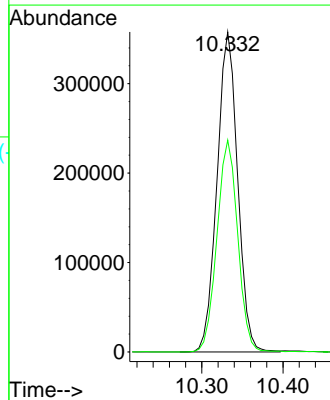
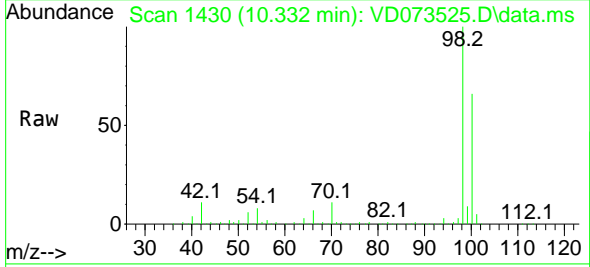
Manual Integrations
APPROVED

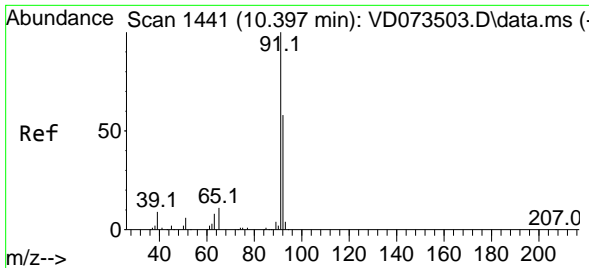
Reviewed By :John Carlone 06/11/2022
Supervised By :Mahesh Dadoda 06/13/2022



#50
Toluene-d8
Concen: 50.274 ug/l
RT: 10.332 min Scan# 1430
Delta R.T. -0.000 min
Lab File: VD073525.D
Acq: 10 Jun 2022 13:38

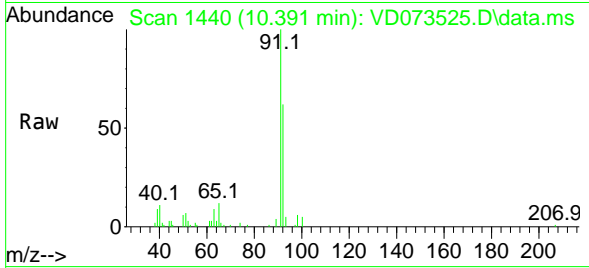
Tgt Ion: 98 Resp: 632156
Ion Ratio Lower Upper
98 100
100 66.8 52.4 78.6





#52
 Toluene
 Concen: 2.187 ug/l
 RT: 10.391 min Scan# 1440
 Delta R.T. -0.006 min
 Lab File: VD073525.D
 Acq: 10 Jun 2022 13:38

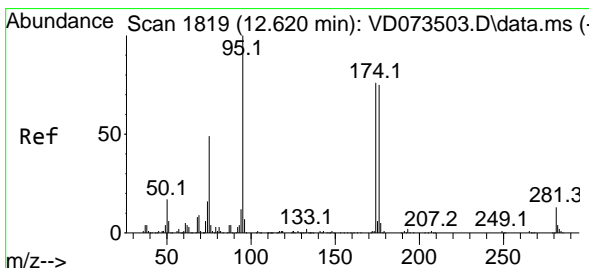
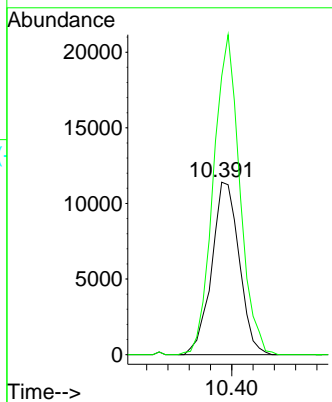
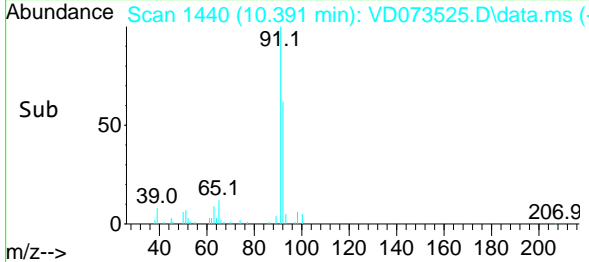
Instrument : MSVOA_D
 Client Sample Id : GATE-6-JET-GROUT-SPOILS



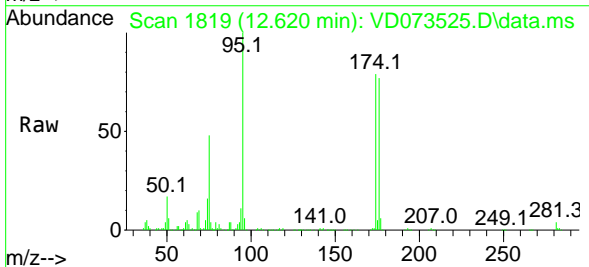
Tgt Ion: 92 Resp: 20378
 Ion Ratio Lower Upper
 92 100
 91 178.4 139.6 209.4

Manual Integrations
APPROVED

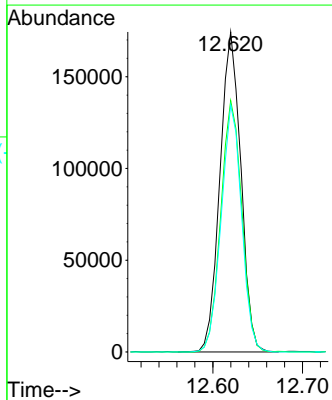
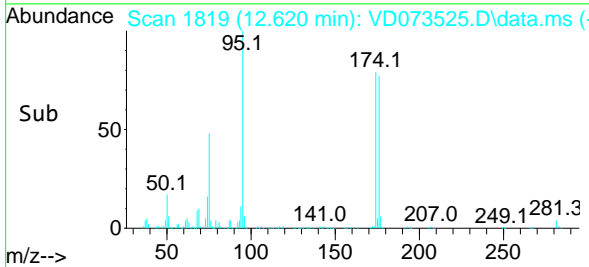
Reviewed By :John Carlone 06/11/2022
 Supervised By :Mahesh Dadoda 06/13/2022

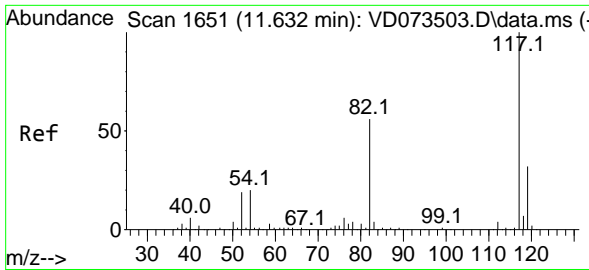


#62
 4-Bromofluorobenzene
 Concen: 61.803 ug/l
 RT: 12.620 min Scan# 1819
 Delta R.T. -0.000 min
 Lab File: VD073525.D
 Acq: 10 Jun 2022 13:38



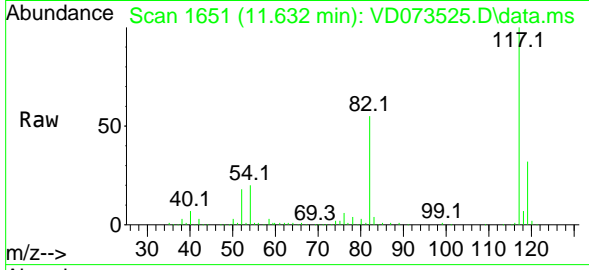
Tgt Ion: 95 Resp: 282116
 Ion Ratio Lower Upper
 95 100
 174 79.2 0.0 152.8
 176 75.3 0.0 145.4





#63
 Chlorobenzene-d5
 Concen: 50.000 ug/l
 RT: 11.632 min Scan# 117
 Delta R.T. -0.000 min
 Lab File: VD073525.D
 Acq: 10 Jun 2022 13:38

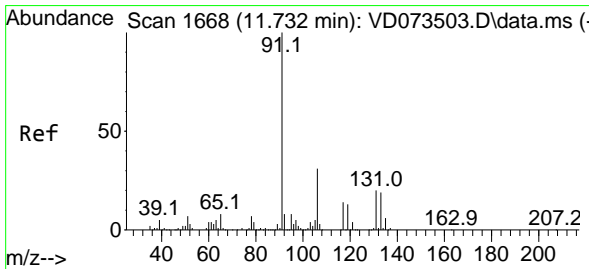
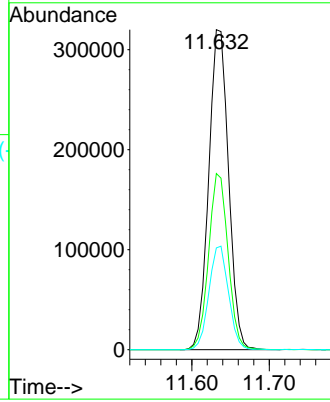
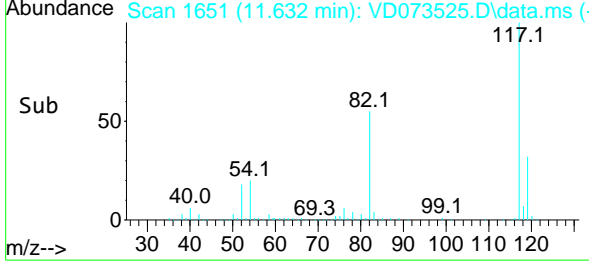
Instrument : MSVOA_D
 ClientSampleId : GATE-6-JET-GROUT-SPOILS



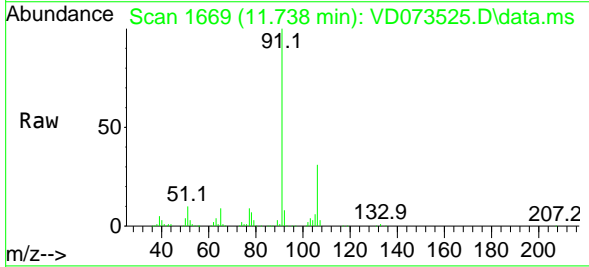
Tgt Ion:117 Resp: 56738
 Ion Ratio Lower Upper
 117 100
 82 55.0 45.3 67.9
 119 31.8 26.6 40.0

Manual Integrations
APPROVED

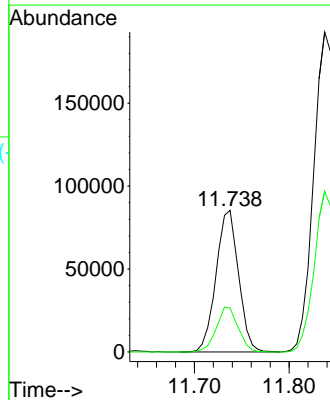
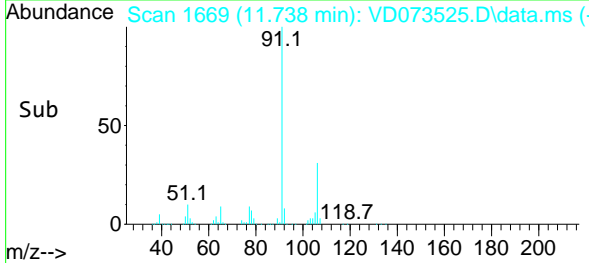
Reviewed By :John Carlone 06/11/2022
 Supervised By :Mahesh Dadoda 06/13/2022

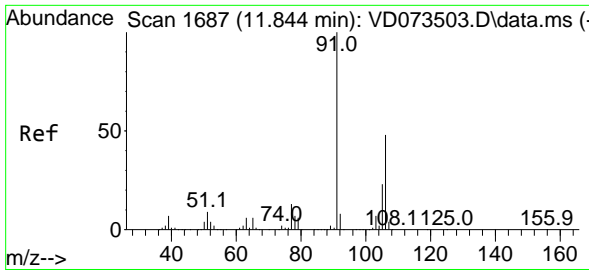


#67
 Ethyl Benzene
 Concen: 6.910 ug/l
 RT: 11.738 min Scan# 1669
 Delta R.T. 0.006 min
 Lab File: VD073525.D
 Acq: 10 Jun 2022 13:38



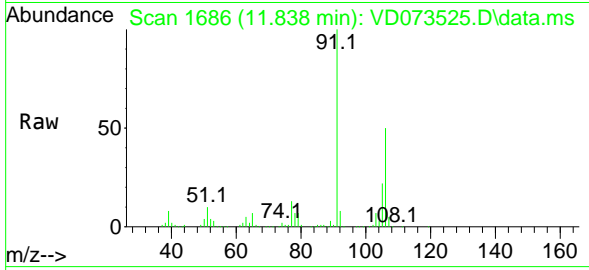
Tgt Ion: 91 Resp: 140963
 Ion Ratio Lower Upper
 91 100
 106 31.1 24.2 36.4





#68
 m/p-Xylenes
 Concen: 22.330 ug/l
 RT: 11.838 min Scan# 1686
 Delta R.T. -0.006 min
 Lab File: VD073525.D
 Acq: 10 Jun 2022 13:38

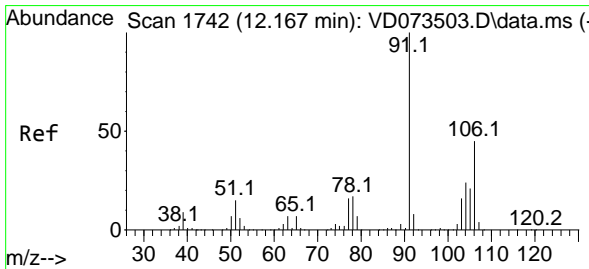
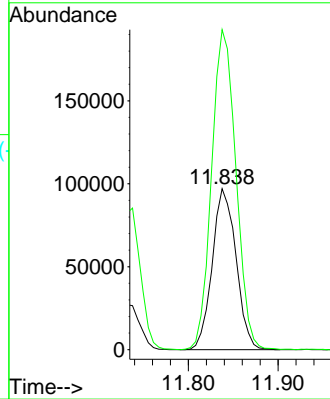
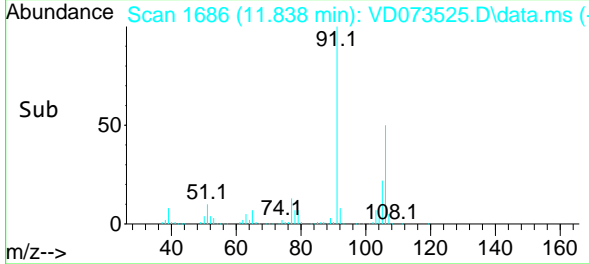
Instrument : MSVOA_D
 ClientSampleId : GATE-6-JET-GROUT-SPOILS



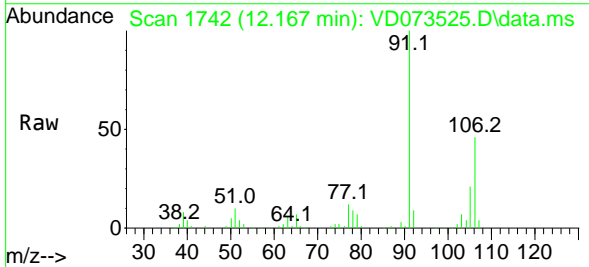
Tgt Ion:106 Resp: 17877
 Ion Ratio Lower Upper
 106 100
 91 203.2 163.7 245.5

Manual Integrations
 APPROVED

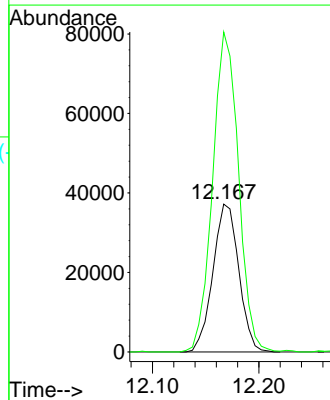
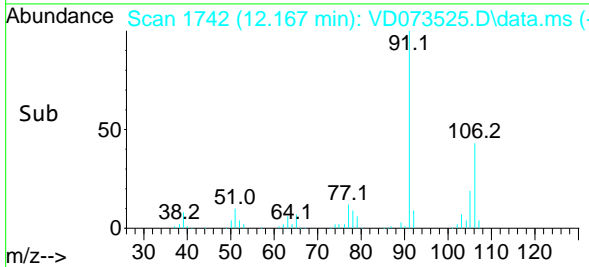
Reviewed By :John Carlone 06/11/2022
 Supervised By :Mahesh Dadoda 06/13/2022

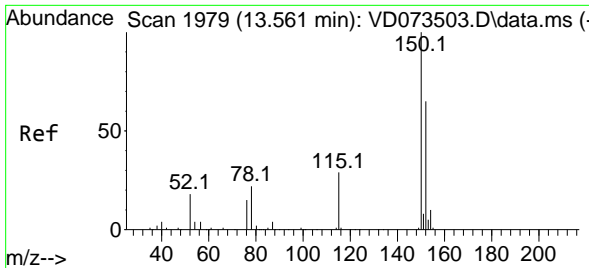


#69
 o-Xylene
 Concen: 8.512 ug/l
 RT: 12.167 min Scan# 1742
 Delta R.T. -0.000 min
 Lab File: VD073525.D
 Acq: 10 Jun 2022 13:38



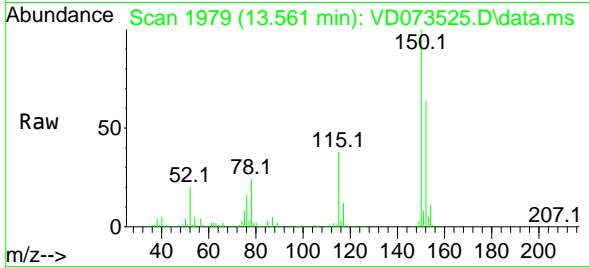
Tgt Ion:106 Resp: 62708
 Ion Ratio Lower Upper
 106 100
 91 216.5 110.4 331.2





#72
 1,4-Dichlorobenzene-d4
 Concen: 50.000 ug/l
 RT: 13.561 min Scan# 1979
 Delta R.T. 0.000 min
 Lab File: VD073525.D
 Acq: 10 Jun 2022 13:38

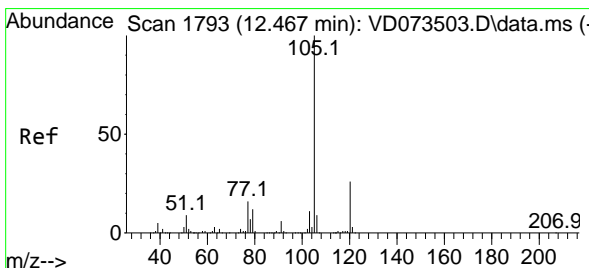
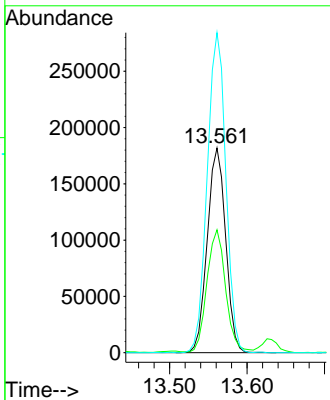
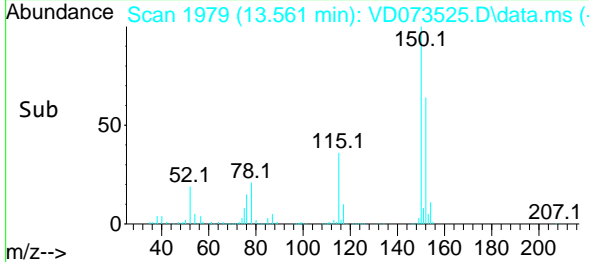
Instrument : MSVOA_D
 ClientSampleId : GATE-6-JET-GROUT-SPOILS



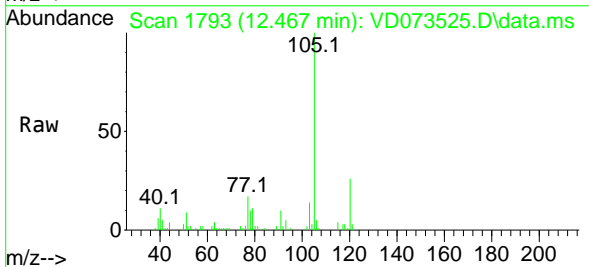
Tgt Ion:152 Resp: 29981
 Ion Ratio Lower Upper
 152 100
 115 60.3 31.3 93.8
 150 158.0 0.0 348.6

Manual Integrations
 APPROVED

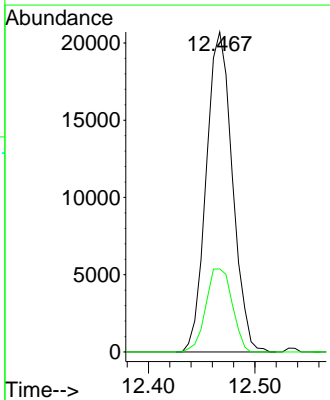
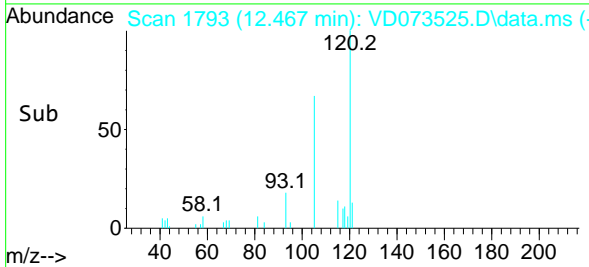
Reviewed By :John Carlone 06/11/2022
 Supervised By :Mahesh Dadoda 06/13/2022

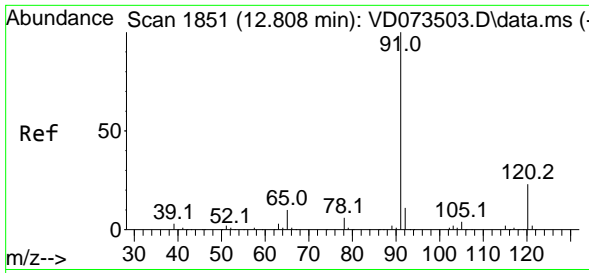


#73
 Isopropylbenzene
 Concen: 1.699 ug/l
 RT: 12.467 min Scan# 1793
 Delta R.T. -0.000 min
 Lab File: VD073525.D
 Acq: 10 Jun 2022 13:38



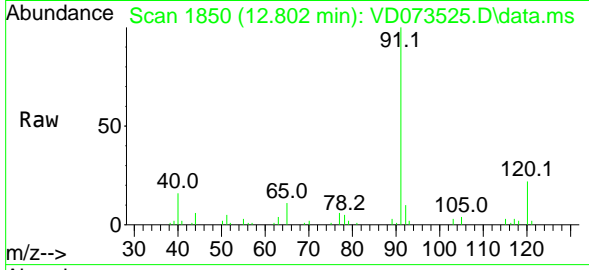
Tgt Ion:105 Resp: 35302
 Ion Ratio Lower Upper
 105 100
 120 26.2 13.0 38.9





#78
 n-propylbenzene
 Concen: 1.026 ug/l
 RT: 12.802 min Scan# 1850
 Delta R.T. -0.006 min
 Lab File: VD073525.D
 Acq: 10 Jun 2022 13:38

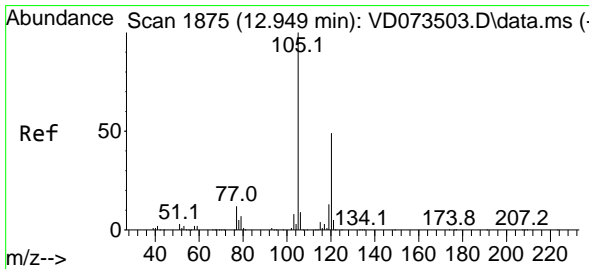
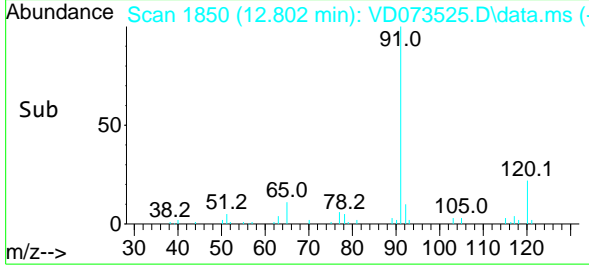
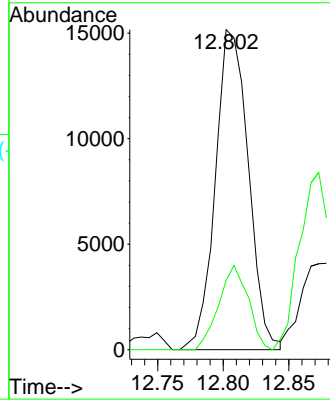
Instrument : MSVOA_D
 ClientSampleId : GATE-6-JET-GROUT-SPOILS



Tgt Ion: 91 Resp: 2653
 Ion Ratio Lower Upper
 91 100
 120 23.4 10.9 32.9

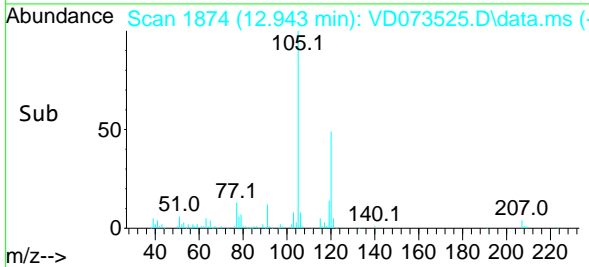
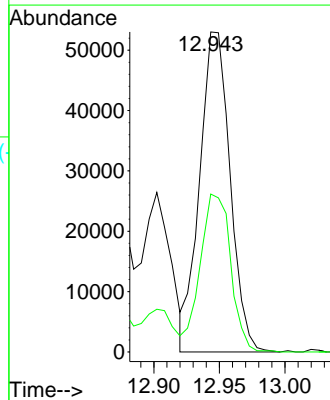
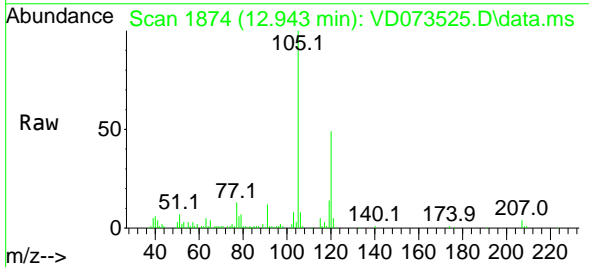
Manual Integrations
 APPROVED

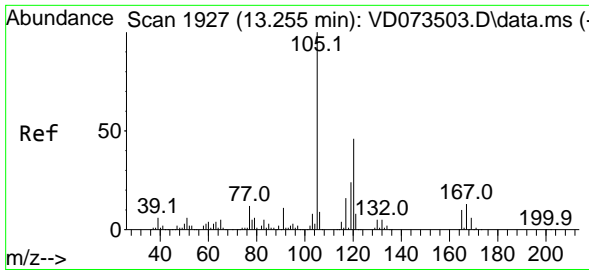
Reviewed By :John Carlone 06/11/2022
 Supervised By :Mahesh Dadoda 06/13/2022



#80
 1,3,5-Trimethylbenzene
 Concen: 4.792 ug/l
 RT: 12.943 min Scan# 1874
 Delta R.T. -0.006 min
 Lab File: VD073525.D
 Acq: 10 Jun 2022 13:38

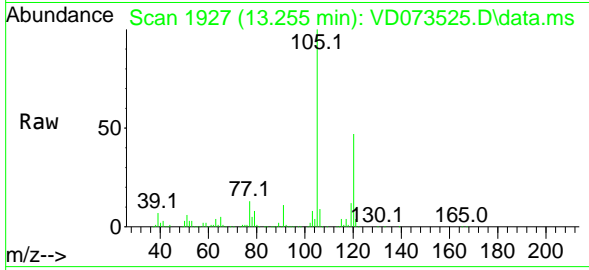
Tgt Ion:105 Resp: 85883
 Ion Ratio Lower Upper
 105 100
 120 49.5 24.3 72.8





#84
 1,2,4-Trimethylbenzene
 Concen: 18.203 ug/l
 RT: 13.255 min Scan# 1927
 Delta R.T. 0.000 min
 Lab File: VD073525.D
 Acq: 10 Jun 2022 13:38

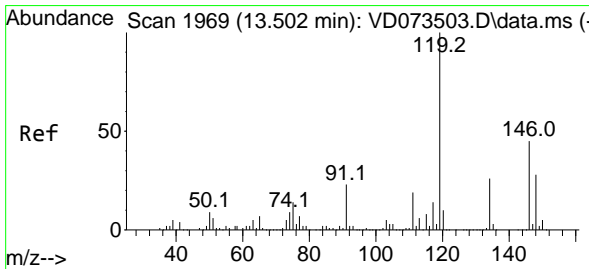
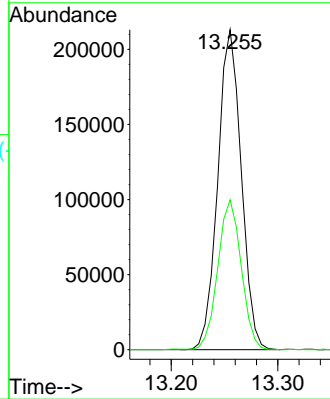
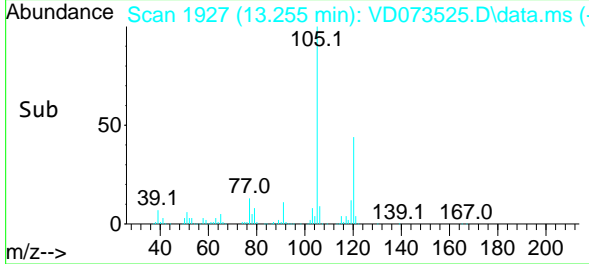
Instrument : MSVOA_D
 ClientSampleId : GATE-6-JET-GROUT-SPOILS



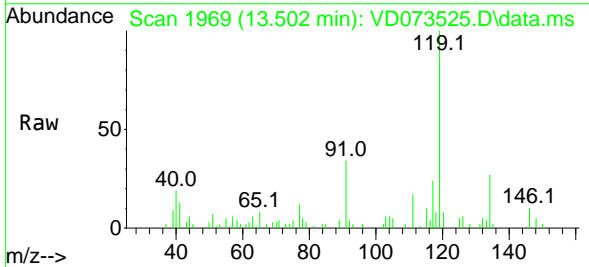
Tgt Ion:105 Resp: 325620
 Ion Ratio Lower Upper
 105 100
 120 46.8 22.3 66.8

Manual Integrations
APPROVED

Reviewed By :John Carlone 06/11/2022
 Supervised By :Mahesh Dadoda 06/13/2022



#86
 p-Isopropyltoluene
 Concen: 1.075 ug/l
 RT: 13.502 min Scan# 1969
 Delta R.T. 0.000 min
 Lab File: VD073525.D
 Acq: 10 Jun 2022 13:38



Tgt Ion:119 Resp: 20327
 Ion Ratio Lower Upper
 119 100
 134 27.8 12.9 38.6
 91 29.6 12.1 36.3

