

Data Path : Z:\voasrv\HPCHEM1\MSVOA_D\Data\VD061124\
 Data File : VD079167.D
 Acq On : 11 Jun 2024 17:29
 Operator : RP/MD
 Sample : P2775-10
 Misc : 5.30G/10ml /MSVOA_D/SOIL/A
 ALS Vial : 6 Sample Multiplier: 1

Instrument :
 MSVOA_D
 ClientSampleId :

Quant Time: Jun 12 01:07:01 2024
 Quant Method : Z:\voasrv\HPCHEM1\MSVOA_D\Method\SFAMDLMO52924SMA.M
 Quant Title : SFAM01.0
 QLast Update : Wed Jun 12 01:05:41 2024
 Response via : Initial Calibration

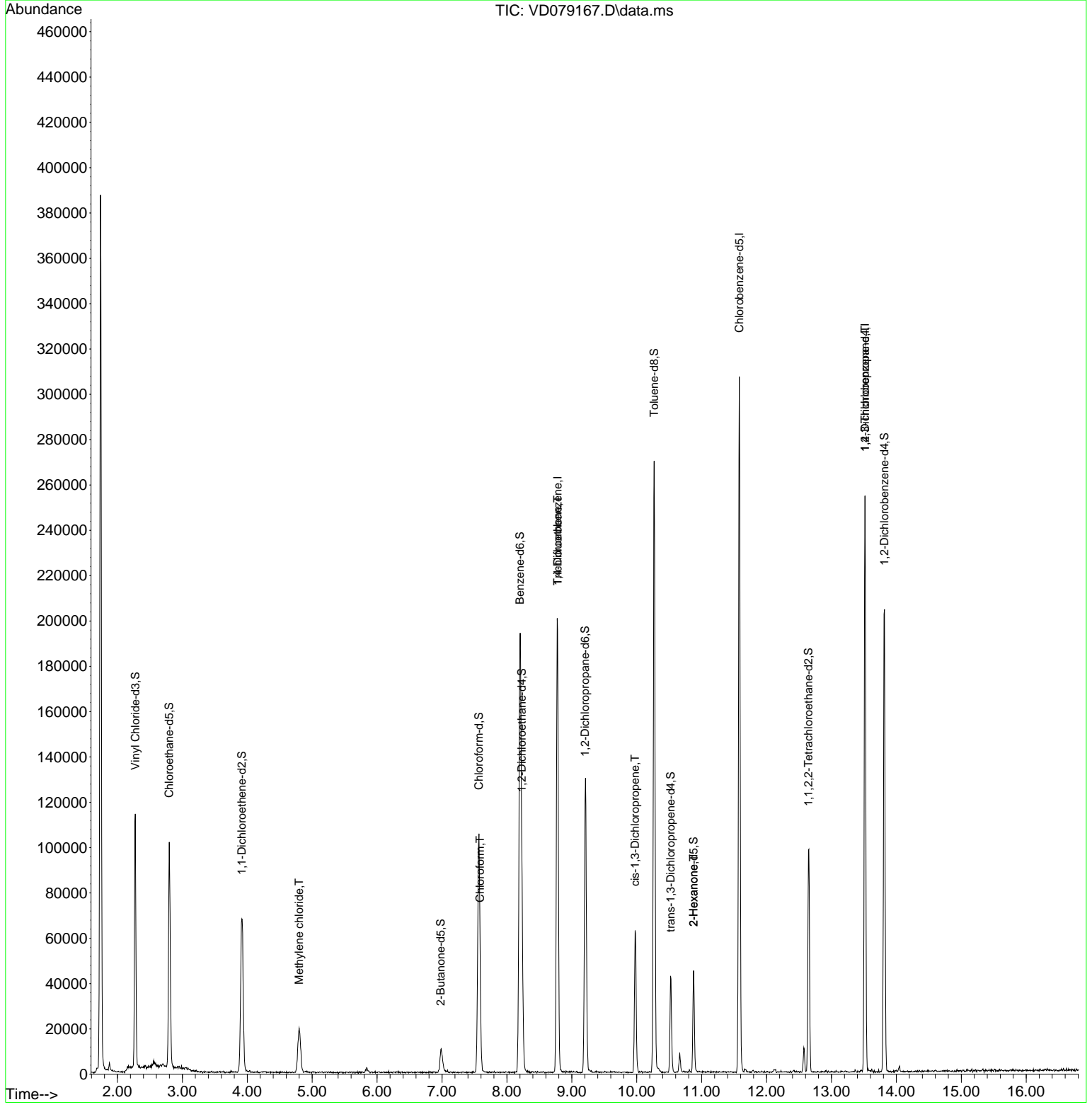
| Compound | R.T. | QI on | Response | Conc | Units | Dev(Min) |
|------------------------------------|--------|-------|----------|----------|--------|----------|
| Internal Standards | | | | | | |
| 1) 1,4-Difluorobenzene | 8.781 | 114 | 190466 | 25.000 | ug/L | 0.00 |
| 28) Chlorobenzene-d5 | 11.581 | 117 | 187494 | 25.000 | ug/L | 0.00 |
| 58) 1,4-Dichlorobenzene-d4 | 13.516 | 152 | 73601 | 25.000 | ug/L | 0.00 |
| System Monitoring Compounds | | | | | | |
| 4) Vinyl Chloride-d3 | 2.275 | 65 | 108148 | 18.452 | ug/L | 0.00 |
| Spike Amount | 25.000 | Range | 30 - 150 | Recovery | = | 73.800% |
| 7) Chloroethane-d5 | 2.799 | 69 | 103446 | 18.253 | ug/L | 0.00 |
| Spike Amount | 25.000 | Range | 30 - 150 | Recovery | = | 73.000% |
| 11) 1,1-Dichloroethene-d2 | 3.916 | 65 | 20272 | 19.483 | ug/L | 0.00 |
| Spike Amount | 25.000 | Range | 45 - 110 | Recovery | = | 77.920% |
| 21) 2-Butanone-d5 | 6.981 | 46 | 17698 | 39.478 | ug/L | 0.00 |
| Spike Amount | 50.000 | Range | 20 - 135 | Recovery | = | 78.960% |
| 24) Chloroform-d | 7.569 | 84 | 112763 | 21.174 | ug/L | 0.00 |
| Spike Amount | 25.000 | Range | 40 - 150 | Recovery | = | 84.680% |
| 26) 1,2-Dichloroethane-d4 | 8.228 | 65 | 52857 | 21.515 | ug/L | 0.00 |
| Spike Amount | 25.000 | Range | 70 - 130 | Recovery | = | 86.080% |
| 32) Benzene-d6 | 8.199 | 84 | 223608 | 21.513 | ug/L | 0.00 |
| Spike Amount | 25.000 | Range | 20 - 135 | Recovery | = | 86.040% |
| 36) 1,2-Dichloropropane-d6 | 9.204 | 67 | 66725 | 22.286 | ug/L | 0.00 |
| Spike Amount | 25.000 | Range | 70 - 120 | Recovery | = | 89.160% |
| 41) Toluene-d8 | 10.269 | 98 | 193124 | 19.844 | ug/L | 0.00 |
| Spike Amount | 25.000 | Range | 30 - 130 | Recovery | = | 79.360% |
| 43) trans-1,3-Dichloropropene | 10.522 | 79 | 25075 | 19.925 | ug/L | 0.00 |
| Spike Amount | 25.000 | Range | 30 - 135 | Recovery | = | 79.720% |
| 47) 2-Hexanone-d5 | 10.875 | 63 | 15163 | 39.175 | ug/L | 0.00 |
| Spike Amount | 50.000 | Range | 20 - 135 | Recovery | = | 78.340% |
| 56) 1,1,2,2-Tetrachloroethene | 12.645 | 84 | 55141 | 20.792 | ug/L | 0.00 |
| Spike Amount | 25.000 | Range | 45 - 120 | Recovery | = | 83.160% |
| 66) 1,2-Dichlorobenzene-d4 | 13.816 | 152 | 58518 | 23.038 | ug/L | 0.00 |
| Spike Amount | 25.000 | Range | 75 - 120 | Recovery | = | 92.160% |
| Target Compounds | | | | | | |
| 16) Methylene chloride | 4.799 | 84 | 16776 | 4.943 | ug/L | 92 |
| 25) Chloroform | 7.587 | 83 | 1195 | 0.229 | ug/L | 76 |
| 34) Trichloroethene | 8.781 | 95 | 5292 | 1.840 | ug/L # | 1 |
| 39) cis-1,3-Dichloropropene | 9.975 | 75 | 1756 | 0.411 | ug/L | 90 |
| 48) 2-Hexanone | 10.875 | 43 | 1758 | 1.779 | ug/L # | 59 |
| 61) 1,2,3-Tri chloropropane | 13.516 | 75 | 8088 | 6.224 | ug/L # | 64 |

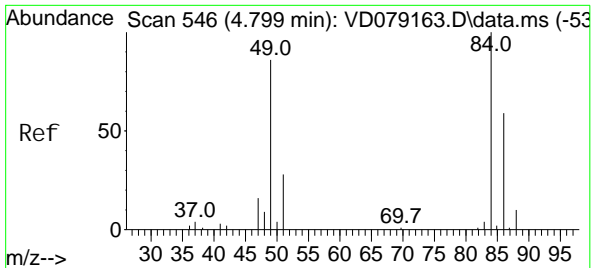
(#) = qualifier out of range (m) = manual integration (+) = signals summed

Data Path : Z:\voasrv\HPCHEM1\MSVOA_D\Data\VD061124\
 Data File : VD079167.D
 Acq On : 11 Jun 2024 17:29
 Operator : RP/MD
 Sample : P2775-10
 Misc : 5.30G/10ml /MSVOA_D/SOIL/A
 ALS Vial : 6 Sample Multiplier: 1

Instrument :
 MSVOA_D
 ClientSampleId :

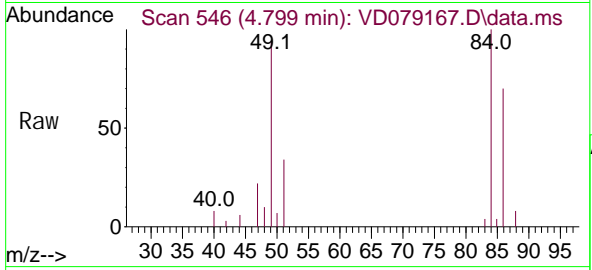
Quant Time: Jun 12 01:07:01 2024
 Quant Method : Z:\voasrv\HPCHEM1\MSVOA_D\Method\SFAMDL052924SMA.M
 Quant Title : SFAM01.0
 QLast Update : Wed Jun 12 01:05:41 2024
 Response via : Initial Calibration





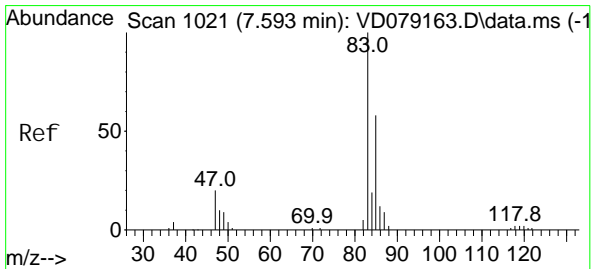
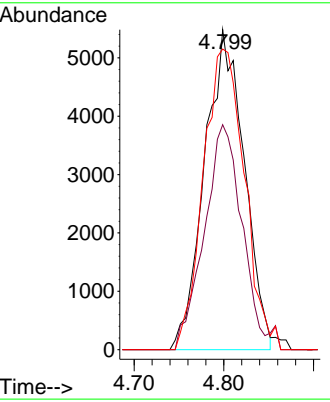
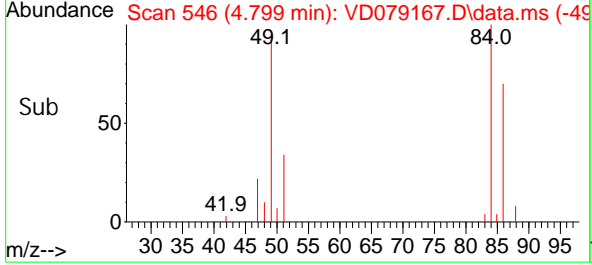
#16
 Methylene chloride
 Concen: 4.943 ug/L
 RT: 4.799 min Scan# 546
 Delta R.T. -0.000 min
 Lab File: VD079167.D
 Acq: 11 Jun 2024 17:29

Instrument : MSVOA_D
 ClientSampleId :

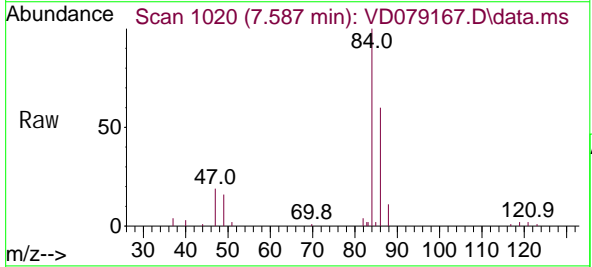


Tgt Ion: 84 Resp: 16776

| Ion | Ratio | Lower | Upper |
|-----|-------|-------|-------|
| 84 | 100 | | |
| 86 | 70.3 | 40.9 | 76.0 |
| 49 | 94.0 | 67.5 | 125.3 |

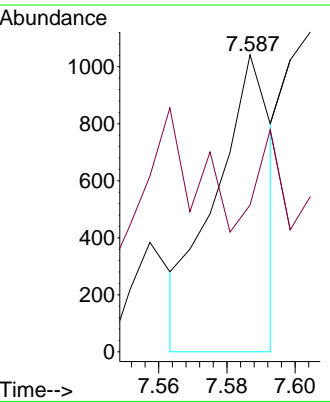
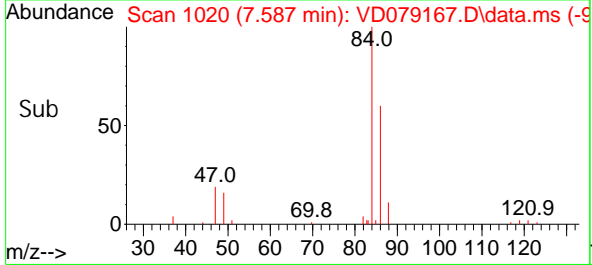


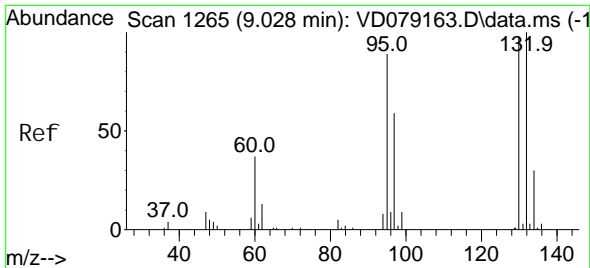
#25
 Chloroform
 Concen: 0.229 ug/L
 RT: 7.587 min Scan# 1020
 Delta R.T. -0.006 min
 Lab File: VD079167.D
 Acq: 11 Jun 2024 17:29



Tgt Ion: 83 Resp: 1195

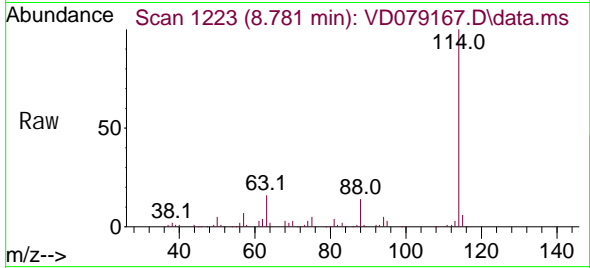
| Ion | Ratio | Lower | Upper |
|-----|-------|-------|-------|
| 83 | 100 | | |
| 85 | 49.4 | 47.9 | 89.1 |





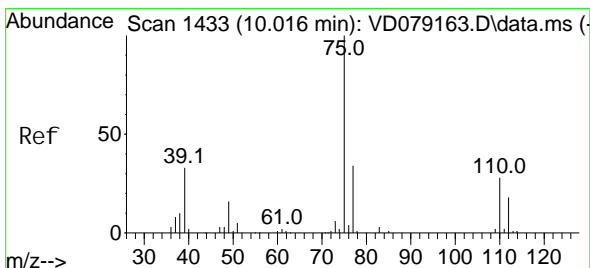
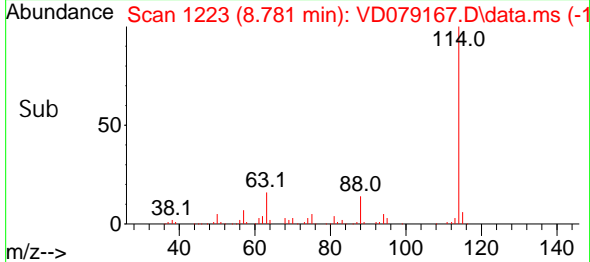
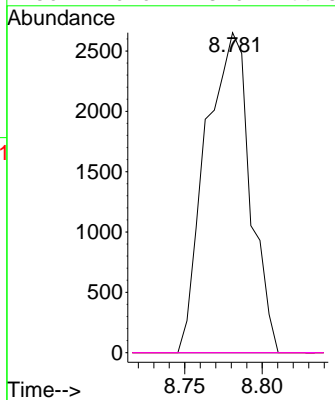
#34
 Trichloroethene
 Concen: 1.840 ug/L
 RT: 8.781 min Scan# 111
 Delta R.T. -0.247 min
 Lab File: VD079167.D
 Acq: 11 Jun 2024 17:29

Instrument :
 MSVOA_D
 ClientSampleId :



Tgt Ion: 95 Resp: 5292

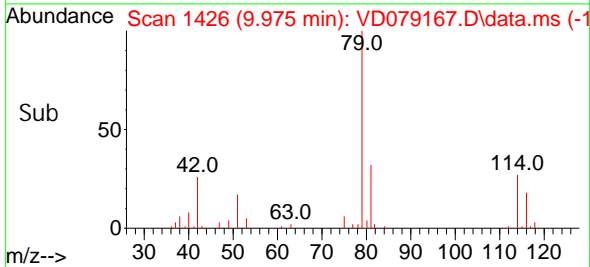
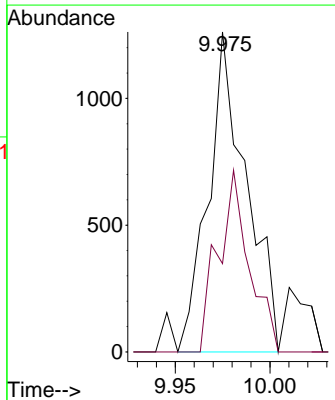
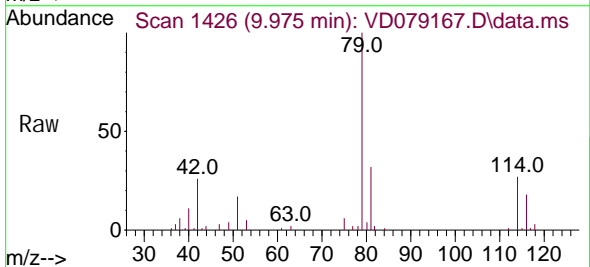
| Ion | Ratio | Lower | Upper |
|-----|-------|-------|--------|
| 95 | 100 | | |
| 97 | 0.0 | 44.6 | 82.8# |
| 132 | 0.0 | 74.9 | 139.1# |
| 130 | 0.0 | 78.0 | 144.8# |

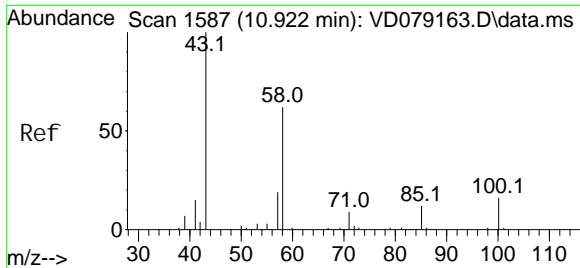


#39
 cis-1,3-Dichloropropene
 Concen: 0.411 ug/L
 RT: 9.975 min Scan# 1426
 Delta R.T. -0.041 min
 Lab File: VD079167.D
 Acq: 11 Jun 2024 17:29

Tgt Ion: 75 Resp: 1756

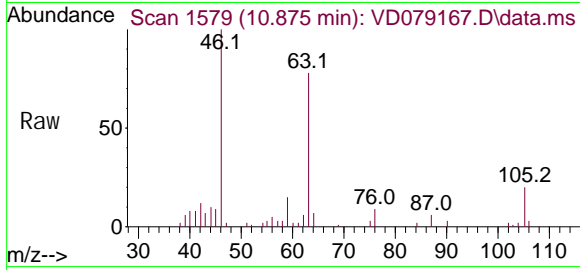
| Ion | Ratio | Lower | Upper |
|-----|-------|-------|-------|
| 75 | 100 | | |
| 77 | 27.6 | 23.4 | 43.4 |



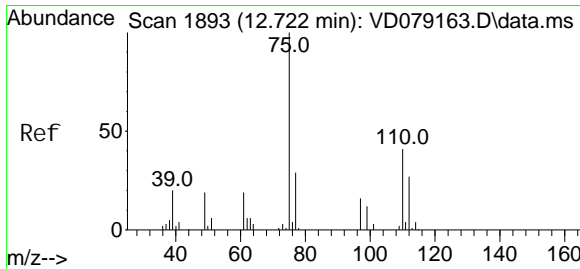
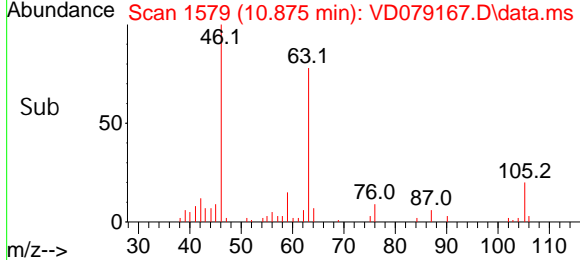
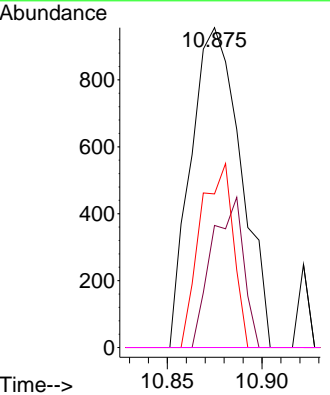


#48
 2-Hexanone
 Concen: 1.779 ug/L
 RT: 10.875 min Scan# 11
 Delta R.T. -0.047 min
 Lab File: VD079167.D
 Acq: 11 Jun 2024 17:29

Instrument : MSVOA_D
 ClientSampleId :



| Tgt Ion | Resp | Lower | Upper |
|---------|------|-------|-------|
| 43 | 1758 | | |
| 43 | 100 | | |
| 58 | 29.9 | 50.1 | 75.1# |
| 57 | 38.0 | 16.5 | 24.7# |
| 100 | 0.0 | 15.2 | 22.8# |



#61
 1,2,3-Trichloropropane
 Concen: 6.224 ug/L
 RT: 13.516 min Scan# 2028
 Delta R.T. 0.794 min
 Lab File: VD079167.D
 Acq: 11 Jun 2024 17:29

| Tgt Ion | Resp | Lower | Upper |
|---------|------|-------|-------|
| 75 | 8088 | | |
| 75 | 100 | | |
| 77 | 32.9 | 25.9 | 38.9 |
| 110 | 3.0 | 34.2 | 51.4# |

