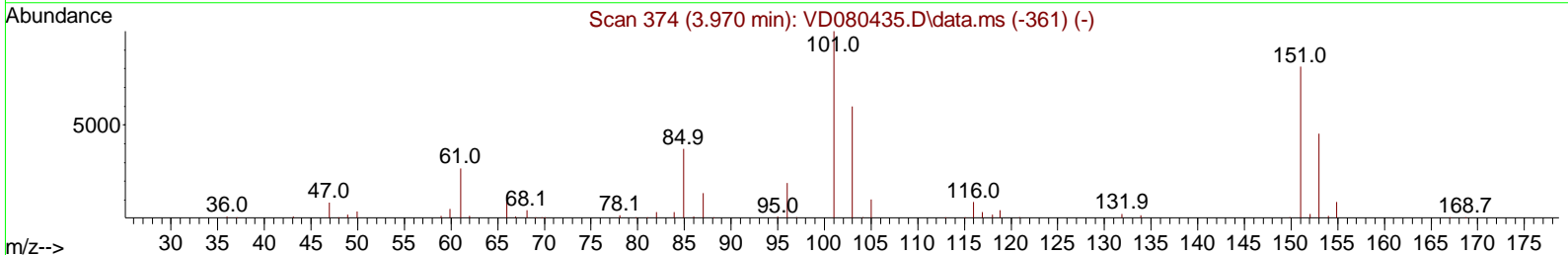
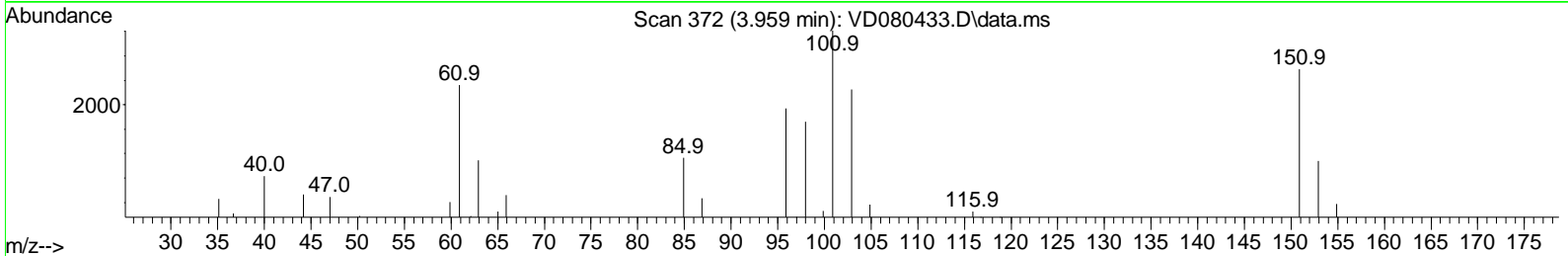
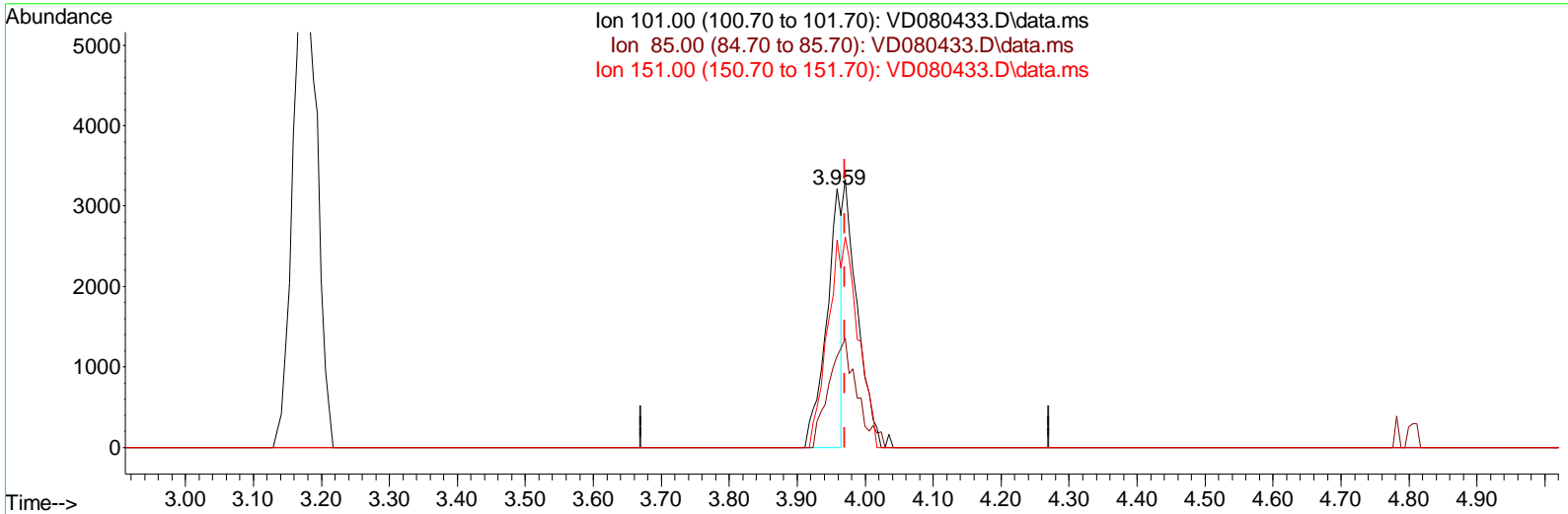


Data Path : Z:\voasrv\HPCHEM1\MSVOA\_D\Data\VD061325\  
 Data File : VD080433.D  
 Acq On : 13 Jun 2025 12:07  
 Operator : RP/MD  
 Sample : VSTD2.576  
 Misc : 5.00G/10ml /MSVOA\_D/SOIL  
 ALS Vial : 4 Sample Multiplier: 1

Quant Time: Jun 16 09:48:33 2025  
 Quant Method : Z:\voasrv\HPCHEM1\MSVOA\_D\Method\SFAMDLMO61325SMA.M  
 Quant Title : SFAM01.0  
 QLast Update : Mon Jun 16 09:46:58 2025  
 Response via : Initial Calibration



TIC: VD080433.D\data.ms

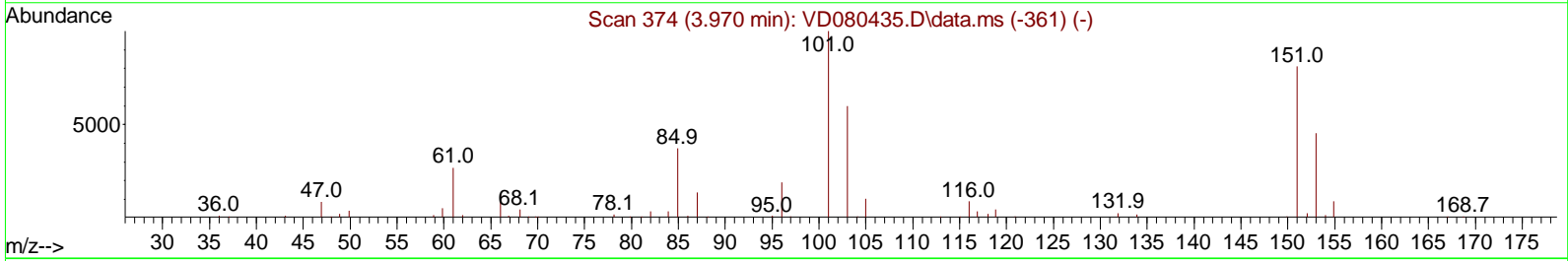
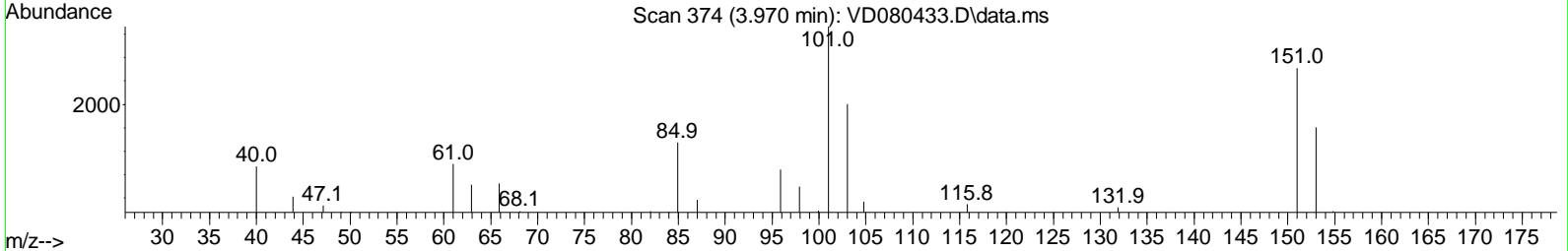
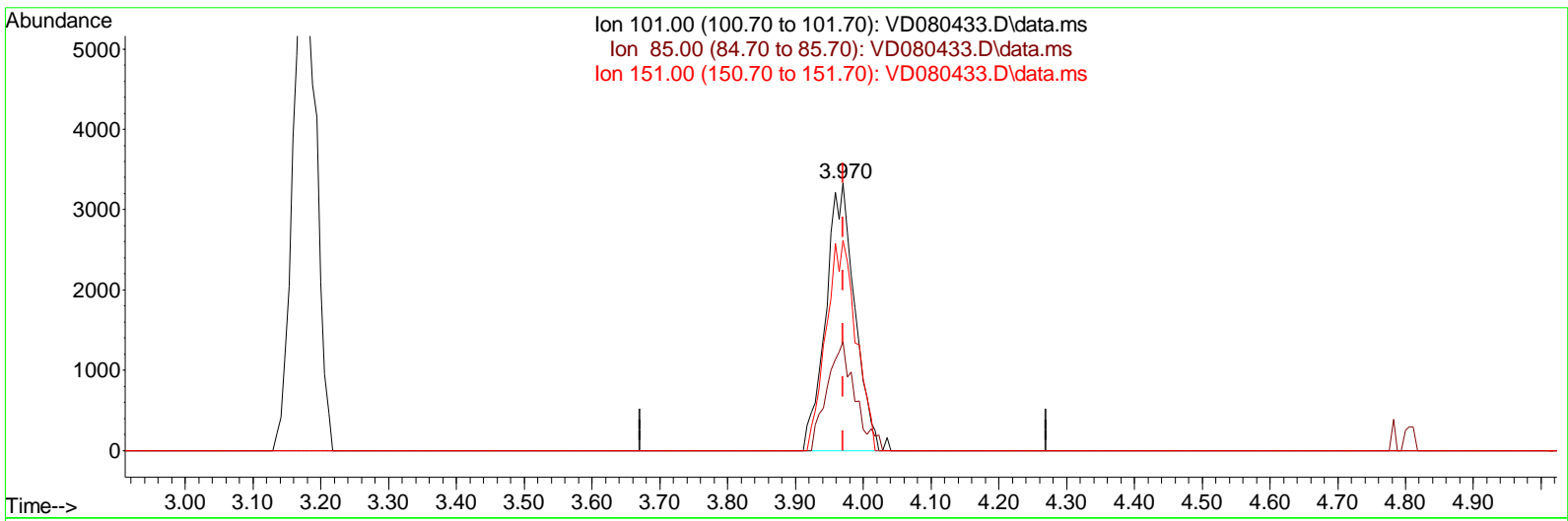
(10) 1,1,2-Trichloro-1,2,2-trifluoroethane (T)

3.959min (-0.012) 1.50 ug/L

response	5069	
Ion	Exp%	Act%
101.00	100.00	100.00
85.00	41.60	72.42#
151.00	82.90	77.79
0.00	0.00	0.00

Data Path : Z:\voasrv\HPCHEM1\MSVOA\_D\Data\VD061325\  
 Data File : VD080433.D  
 Acq On : 13 Jun 2025 12:07  
 Operator : RP/MD  
 Sample : VSTD2.576  
 Misc : 5.00G/10ml /MSVOA\_D/SOIL  
 ALS Vial : 4 Sample Multiplier: 1

Quant Time: Jun 16 09:48:33 2025  
 Quant Method : Z:\voasrv\HPCHEM1\MSVOA\_D\Method\SFAMDLMO61325SMA.M  
 Quant Title : SFAM01.0  
 QLast Update : Mon Jun 16 09:46:58 2025  
 Response via : Initial Calibration



TIC: VD080433.D\data.ms

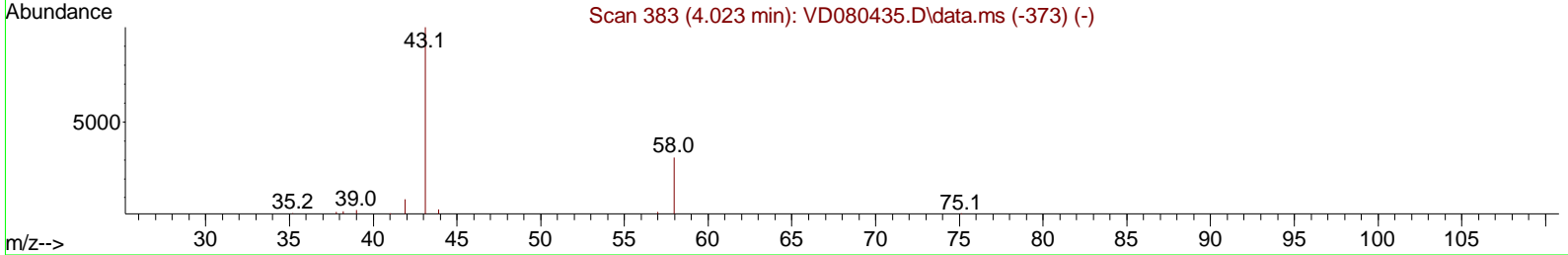
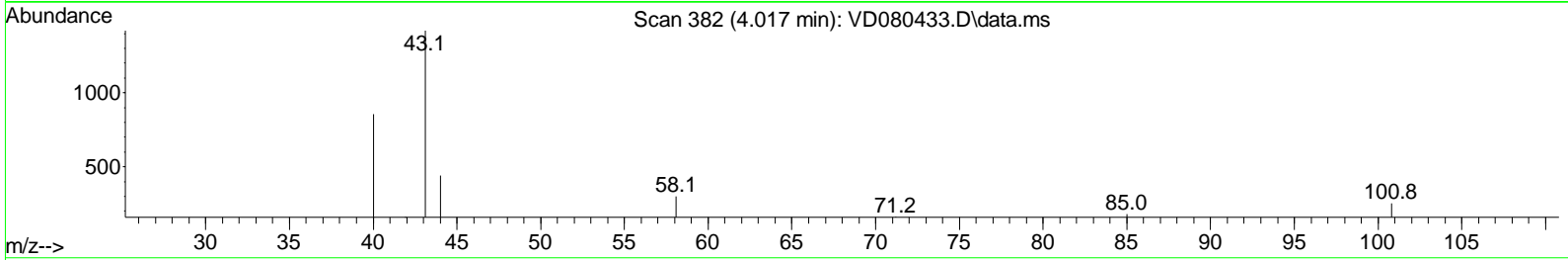
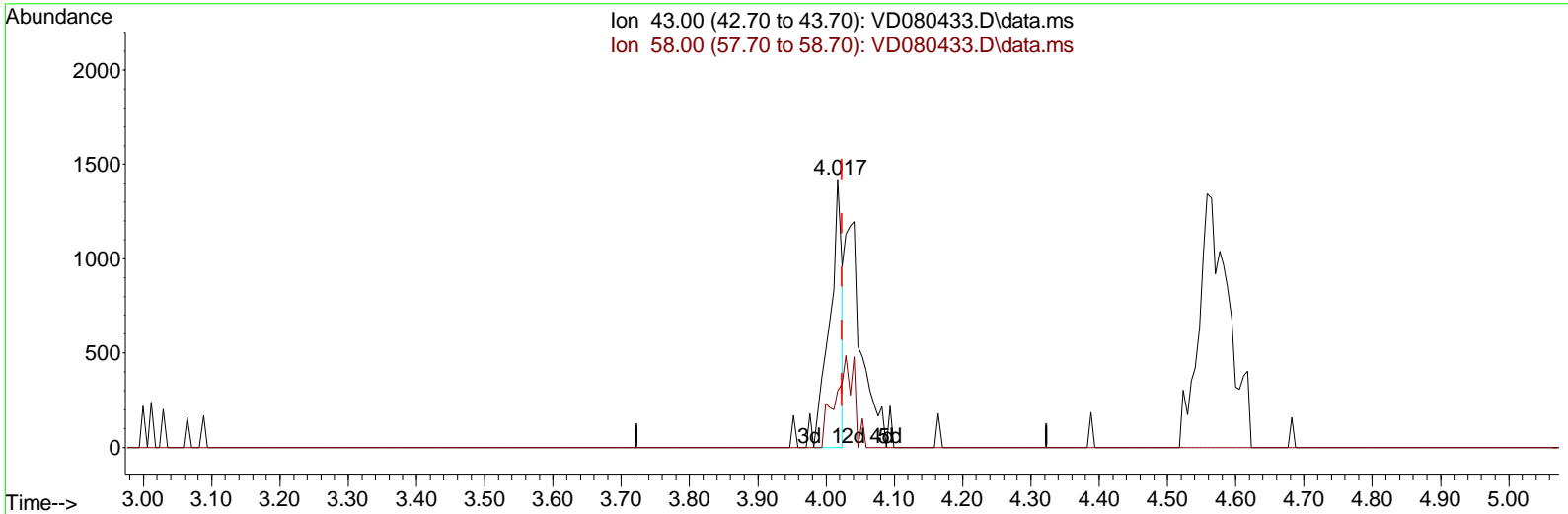
(10) 1,1,2-Trichloro-1,2,2-trifluoroethane (T)

3.970min (-0.000) 2.90 ug/L m

response	9811
Ion	Exp% Act%
101.00	100.00 100.00
85.00	41.60 37.42
151.00	82.90 40.19#
0.00	0.00 0.00

Data Path : Z:\voasrv\HPCHEM1\MSVOA\_D\Data\VD061325\  
 Data File : VD080433.D  
 Acq On : 13 Jun 2025 12:07  
 Operator : RP/MD  
 Sample : VSTD2.576  
 Misc : 5.00G/10ml /MSVOA\_D/SOIL  
 ALS Vial : 4 Sample Multiplier: 1

Quant Time: Jun 16 09:48:33 2025  
 Quant Method : Z:\voasrv\HPCHEM1\MSVOA\_D\Method\SFAMDLMO61325SMA.M  
 Quant Title : SFAM01.0  
 QLast Update : Mon Jun 16 09:46:58 2025  
 Response via : Initial Calibration



TIC: VD080433.D\data.ms

(13) Acetone (T)

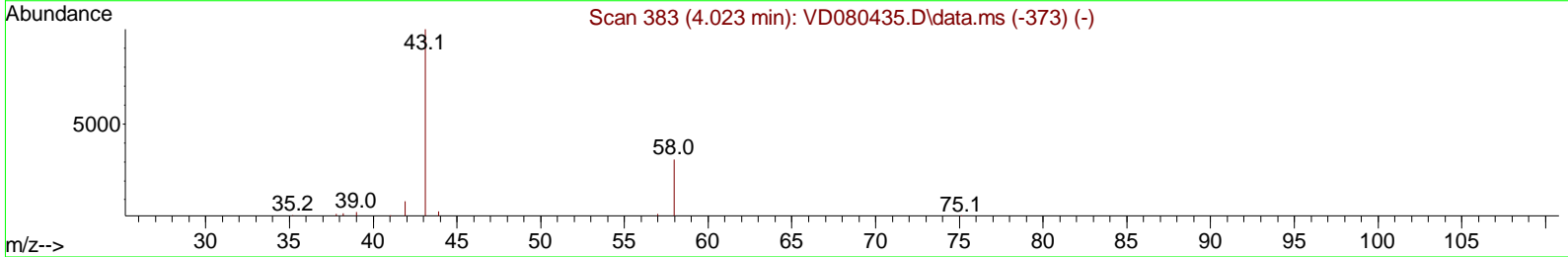
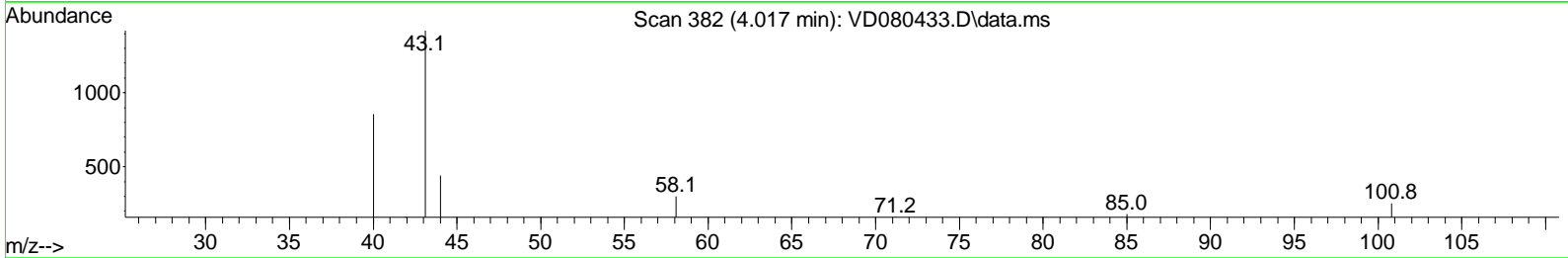
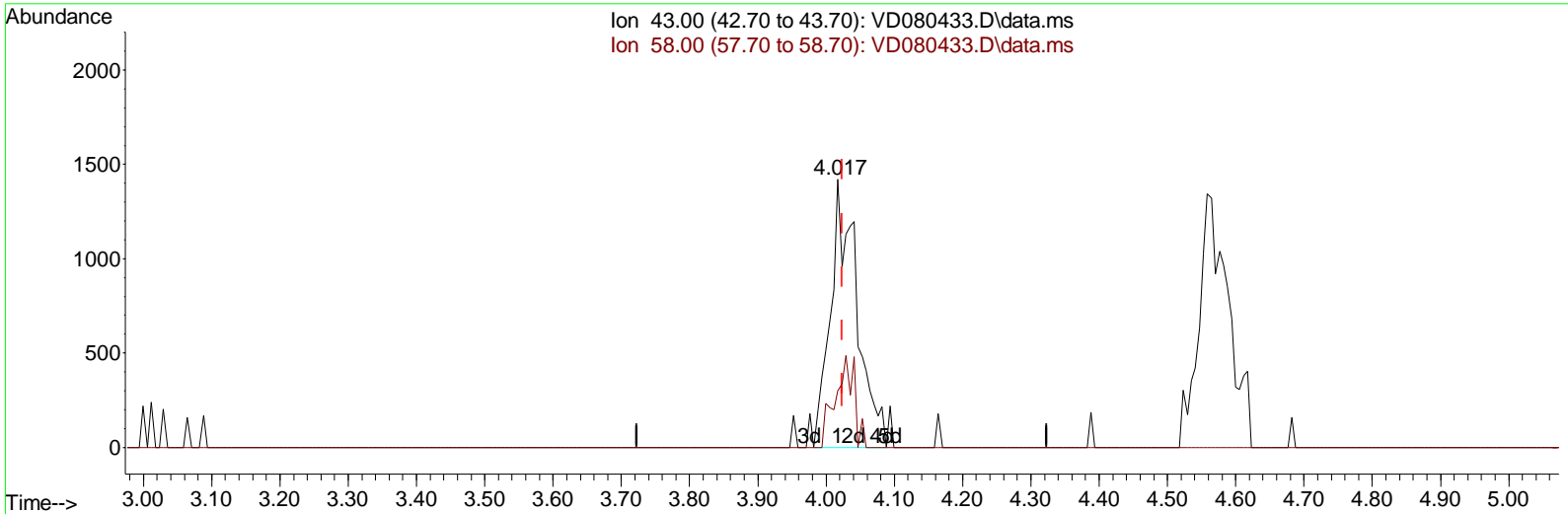
4.017min (-0.006) 3.01 ug/L

response 1759

Ion	Exp%	Act%
43.00	100.00	100.00
58.00	32.20	28.08
0.00	0.00	0.00
0.00	0.00	0.00

Data Path : Z:\voasrv\HPCHEM1\MSVOA\_D\Data\VD061325\  
 Data File : VD080433.D  
 Acq On : 13 Jun 2025 12:07  
 Operator : RP/MD  
 Sample : VSTD2.576  
 Misc : 5.00G/10ml /MSVOA\_D/SOIL  
 ALS Vial : 4 Sample Multiplier: 1

Quant Time: Jun 16 09:48:33 2025  
 Quant Method : Z:\voasrv\HPCHEM1\MSVOA\_D\Method\SFAMDLMO61325SMA.M  
 Quant Title : SFAM01.0  
 QLast Update : Mon Jun 16 09:46:58 2025  
 Response via : Initial Calibration



TIC: VD080433.D\data.ms

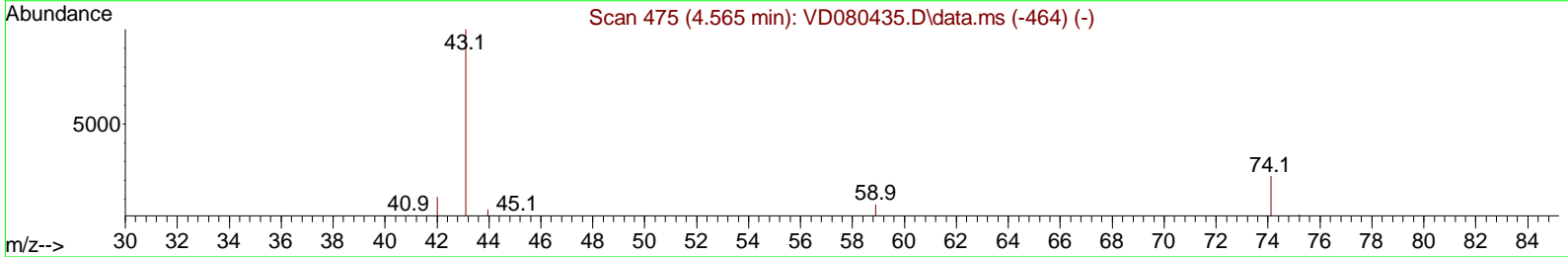
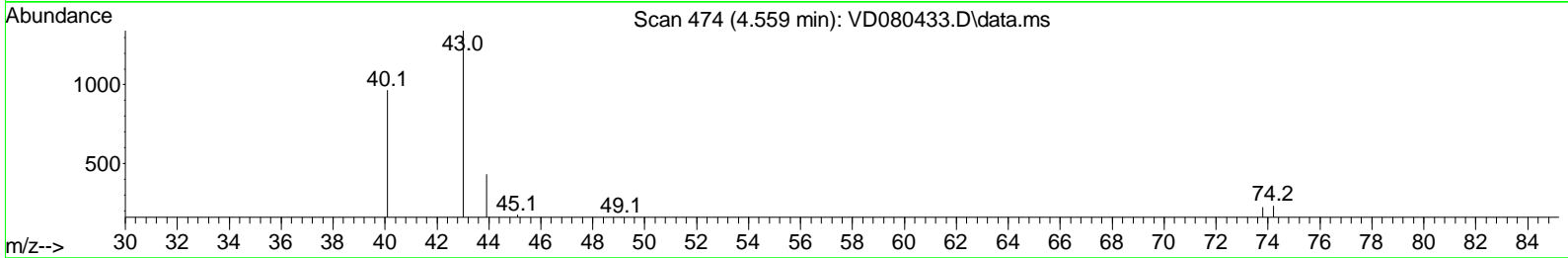
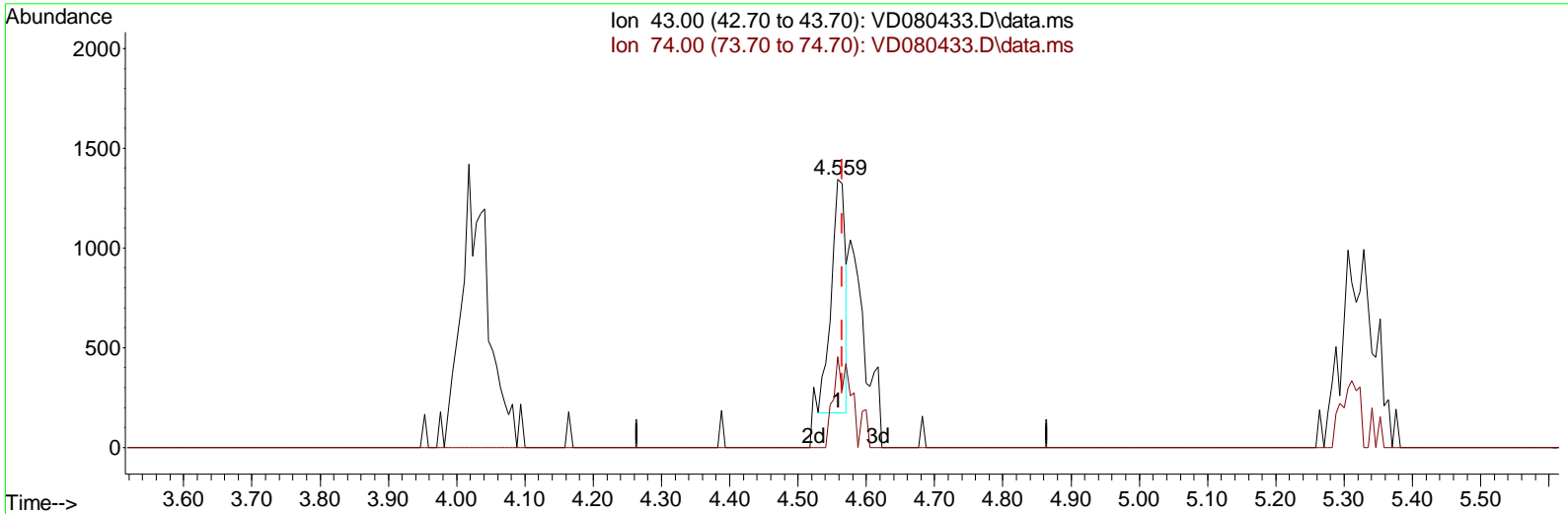
(13) Acetone (T)

4.017min (-0.006) 6.52 ug/L m

response	3814
Ion	Exp% Act%
43.00	100.00 100.00
58.00	32.20 12.95
0.00	0.00 0.00
0.00	0.00 0.00

Data Path : Z:\voasrv\HPCHEM1\MSVOA\_D\Data\VD061325\  
 Data File : VD080433.D  
 Acq On : 13 Jun 2025 12:07  
 Operator : RP/MD  
 Sample : VSTD2.576  
 Misc : 5.00G/10ml /MSVOA\_D/SOIL  
 ALS Vial : 4 Sample Multiplier: 1

Quant Time: Jun 16 09:48:33 2025  
 Quant Method : Z:\voasrv\HPCHEM1\MSVOA\_D\Method\SFAMDLMO61325SMA.M  
 Quant Title : SFAM01.0  
 QLast Update : Mon Jun 16 09:46:58 2025  
 Response via : Initial Calibration



TIC: VD080433.D\data.ms

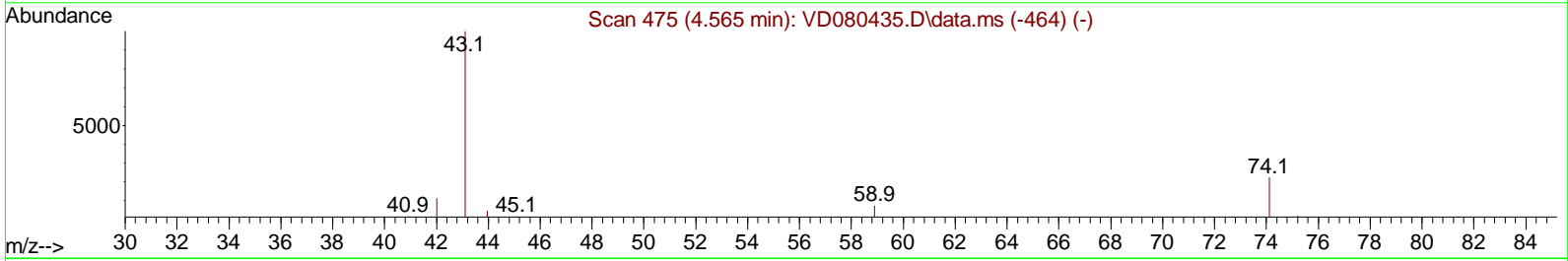
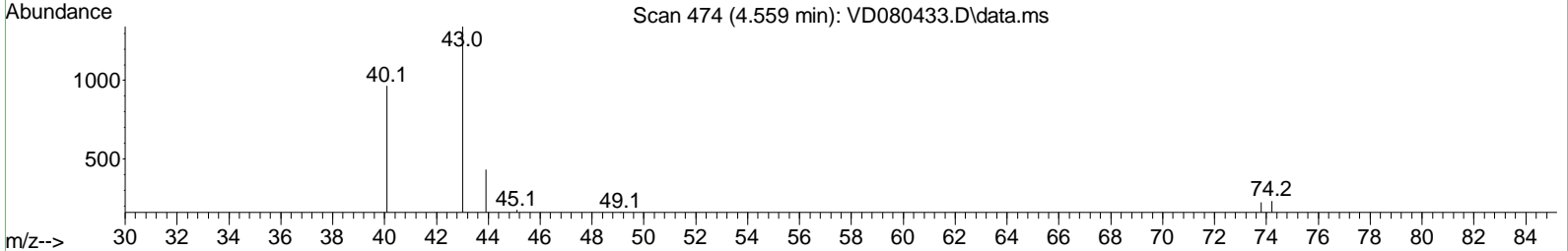
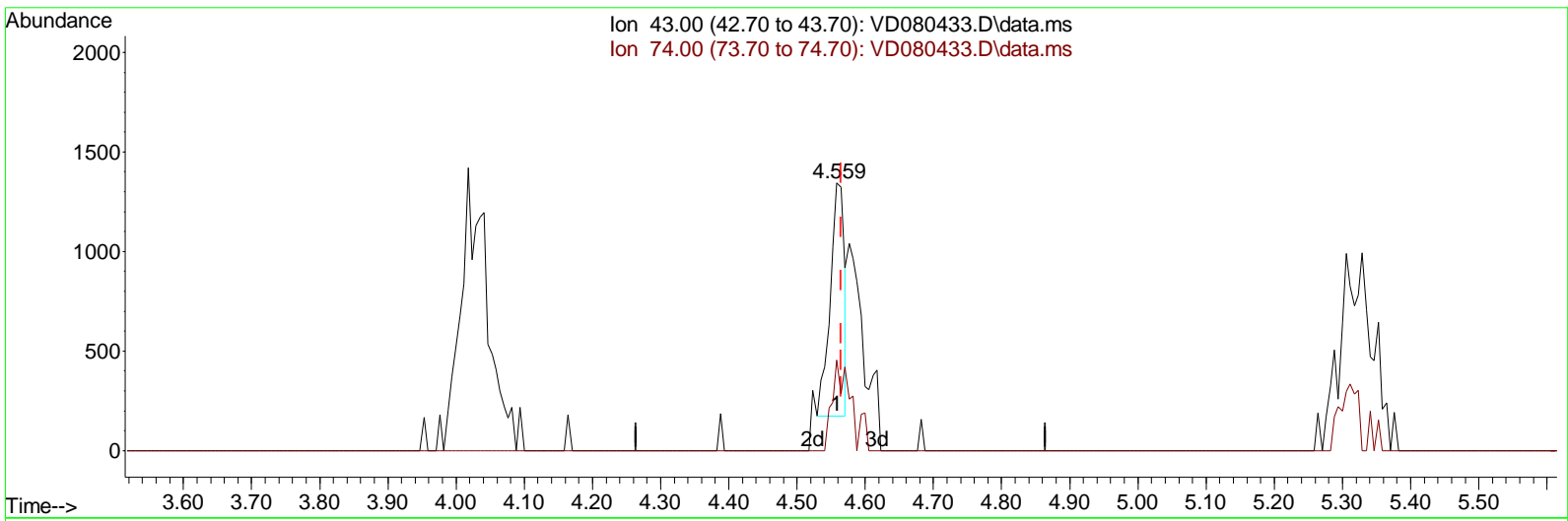
(15) Methyl Acetate (T)

4.559min (-0.006) 1.22 ug/L

response	1693
Ion	Exp% Act%
43.00	100.00 100.00
74.00	24.00 44.95#
0.00	0.00 0.00
0.00	0.00 0.00

Data Path : Z:\voasrv\HPCHEM1\MSVOA\_D\Data\VD061325\  
 Data File : VD080433.D  
 Acq On : 13 Jun 2025 12:07  
 Operator : RP/MD  
 Sample : VSTD2.576  
 Misc : 5.00G/10ml /MSVOA\_D/SOIL  
 ALS Vial : 4 Sample Multiplier: 1

Quant Time: Jun 16 09:48:33 2025  
 Quant Method : Z:\voasrv\HPCHEM1\MSVOA\_D\Method\SFAMDLMO61325SMA.M  
 Quant Title : SFAM01.0  
 QLast Update : Mon Jun 16 09:46:58 2025  
 Response via : Initial Calibration



TIC: VD080433.D\data.ms

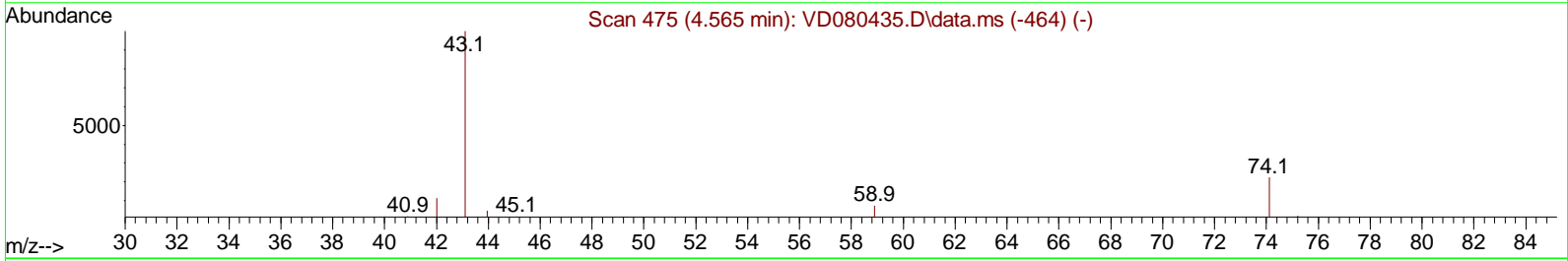
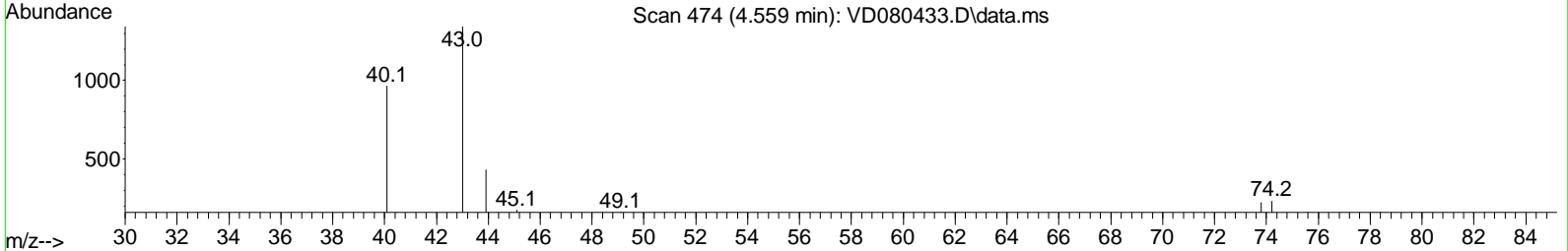
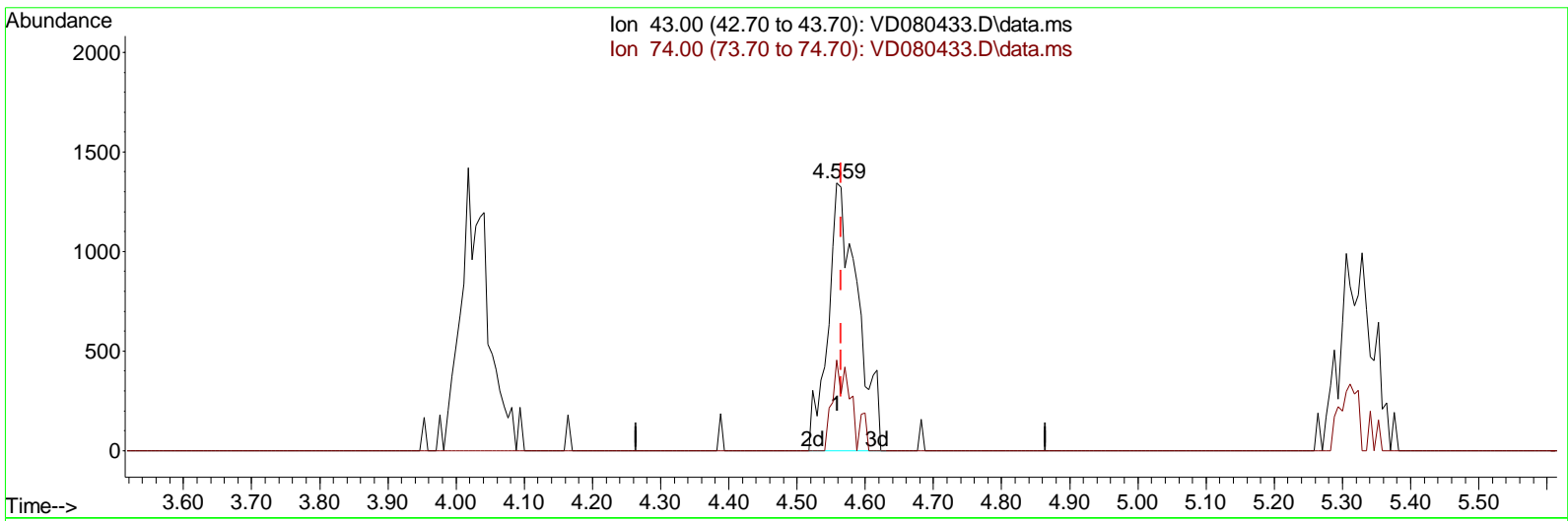
(15) Methyl Acetate (T)

4.559min (-0.006) 1.22 ug/L

response	1693
Ion	Exp% Act%
43.00	100.00 100.00
74.00	24.00 44.95#
0.00	0.00 0.00
0.00	0.00 0.00

Data Path : Z:\voasrv\HPCHEM1\MSVOA\_D\Data\VD061325\  
 Data File : VD080433.D  
 Acq On : 13 Jun 2025 12:07  
 Operator : RP/MD  
 Sample : VSTD2.576  
 Misc : 5.00G/10ml /MSVOA\_D/SOIL  
 ALS Vial : 4 Sample Multiplier: 1

Quant Time: Jun 16 09:48:33 2025  
 Quant Method : Z:\voasrv\HPCHEM1\MSVOA\_D\Method\SFAMDLMO61325SMA.M  
 Quant Title : SFAM01.0  
 QLast Update : Mon Jun 16 09:46:58 2025  
 Response via : Initial Calibration



TIC: VD080433.D\data.ms

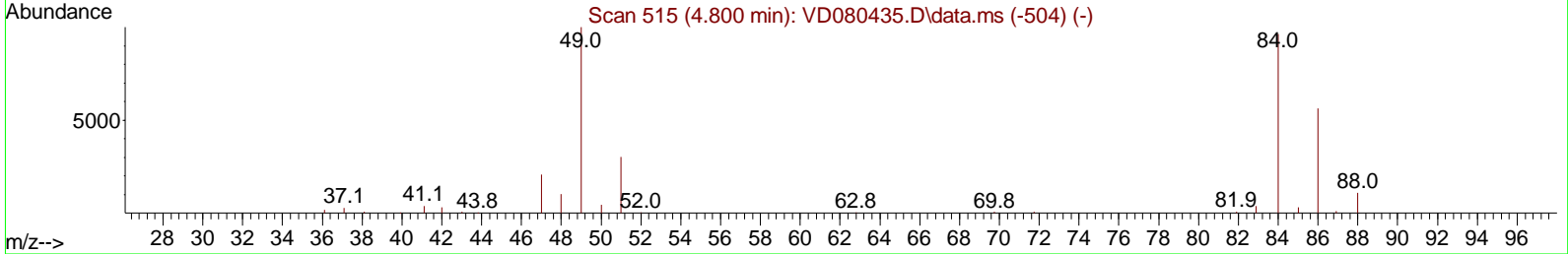
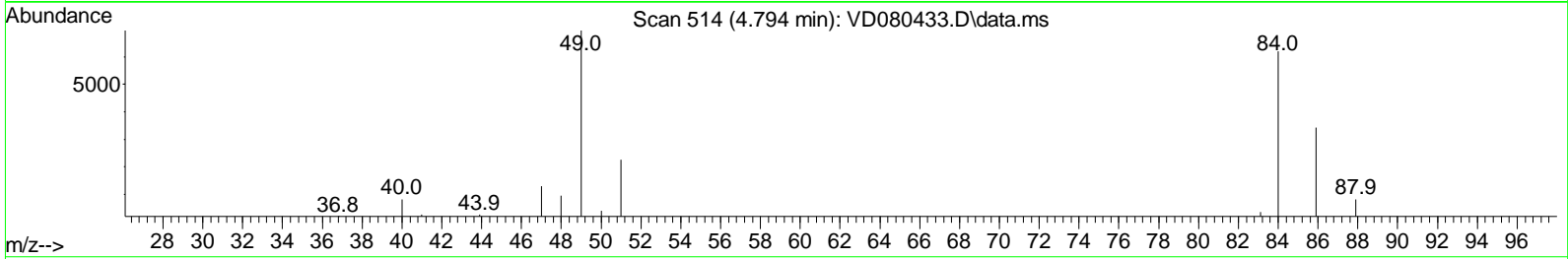
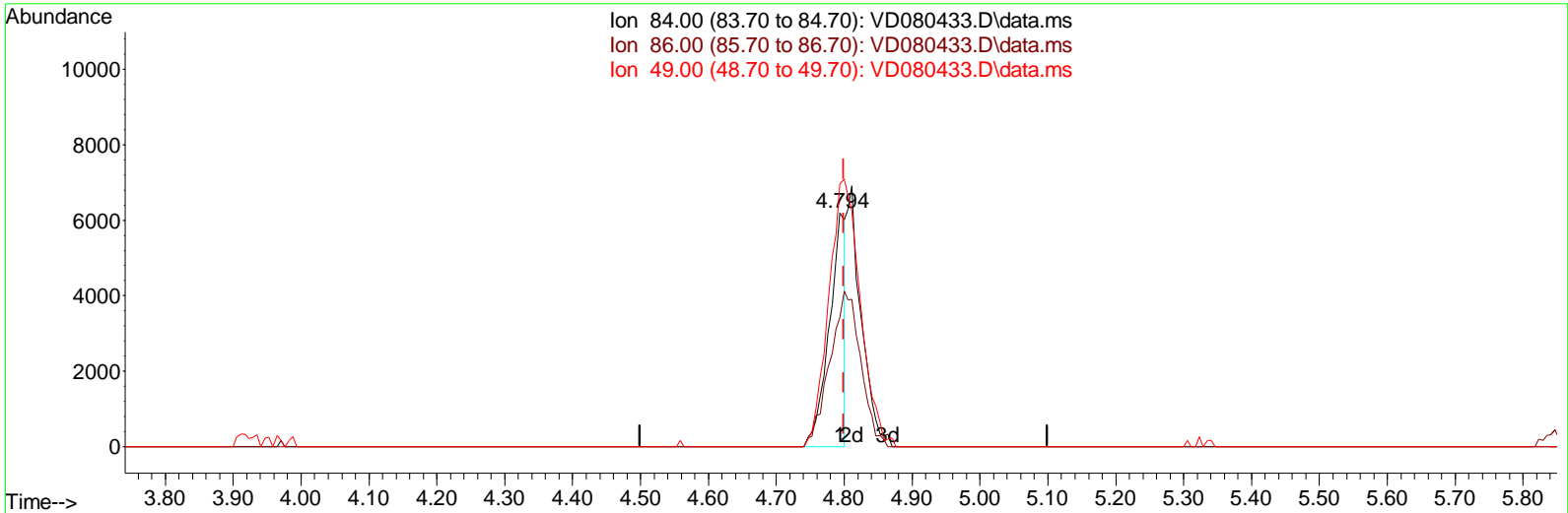
(15) Methyl Acetate (T)

4.559min (-0.006) 2.91 ug/L m

response	4038
Ion	Exp% Act%
43.00	100.00 100.00
74.00	24.00 18.85#
0.00	0.00 0.00
0.00	0.00 0.00

Data Path : Z:\voasrv\HPCHEM1\MSVOA\_D\Data\VD061325\  
 Data File : VD080433.D  
 Acq On : 13 Jun 2025 12:07  
 Operator : RP/MD  
 Sample : VSTD2.576  
 Misc : 5.00G/10ml/MSVOA\_D/SOIL  
 ALS Vial : 4 Sample Multiplier: 1

Quant Time: Jun 16 09:48:33 2025  
 Quant Method : Z:\voasrv\HPCHEM1\MSVOA\_D\Method\SFAMDLMO61325SMA.M  
 Quant Title : SFAM01.0  
 QLast Update : Mon Jun 16 09:46:58 2025  
 Response via : Initial Calibration



TIC: VD080433.D\data.ms

(16) Methylene chloride (T)

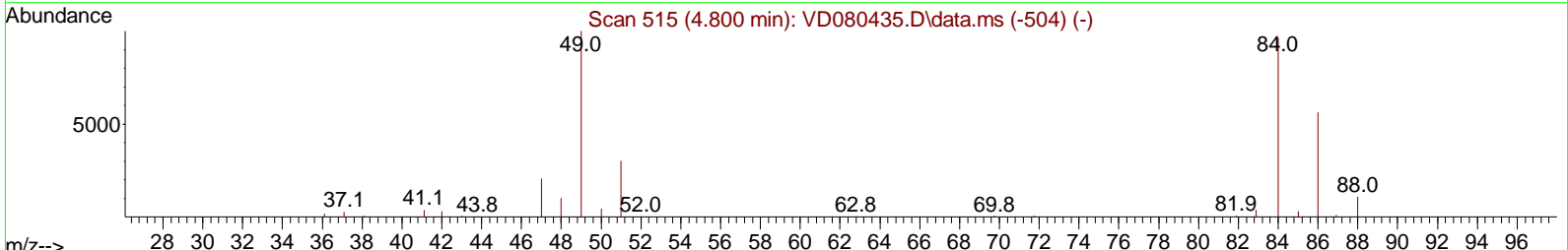
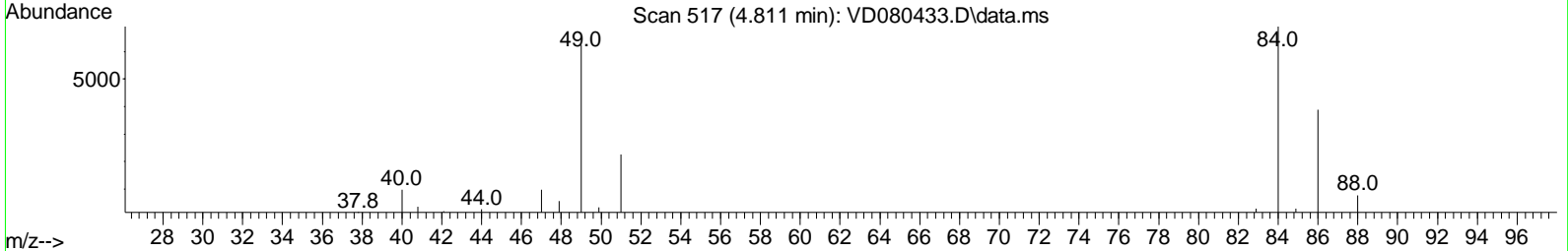
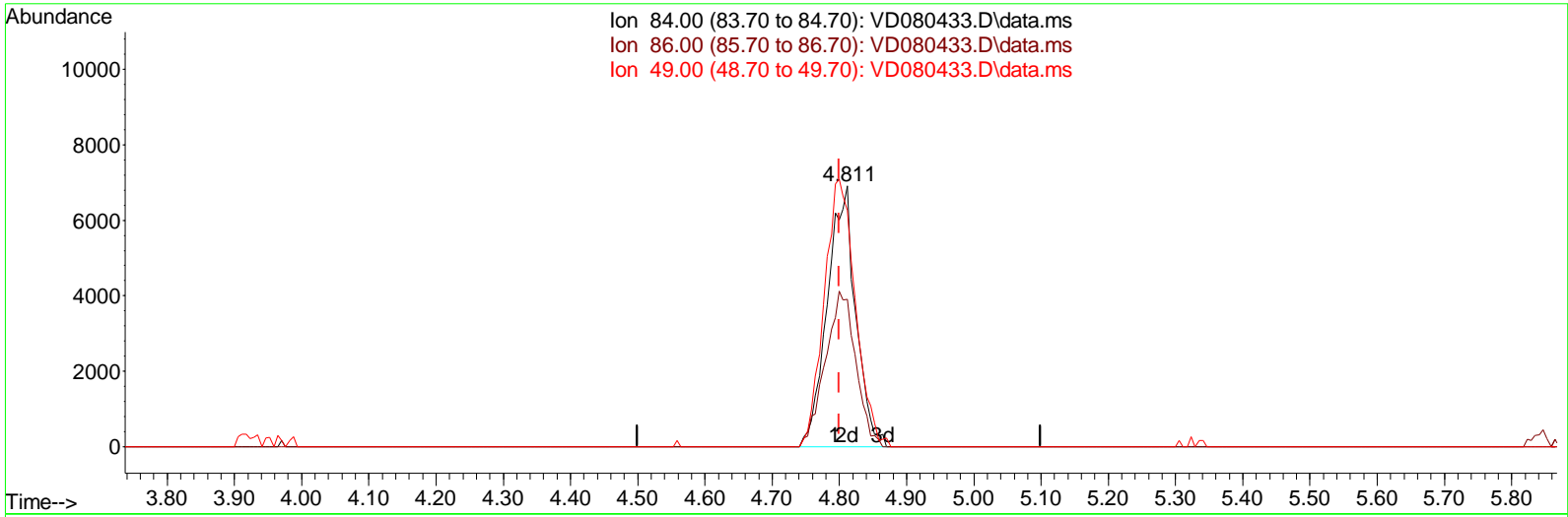
4.794min (-0.006) 2.49 ug/L

response	10060
Ion	Exp% Act%
84.00	100.00 100.00
86.00	58.40 55.28
49.00	104.00 112.33
0.00	0.00 0.00



Data Path : Z:\voasrv\HPCHEM1\MSVOA\_D\Data\VD061325\  
 Data File : VD080433.D  
 Acq On : 13 Jun 2025 12:07  
 Operator : RP/MD  
 Sample : VSTD2.576  
 Misc : 5.00G/10ml /MSVOA\_D/SOIL  
 ALS Vial : 4 Sample Multiplier: 1

Quant Time: Jun 16 09:48:33 2025  
 Quant Method : Z:\voasrv\HPCHEM1\MSVOA\_D\Method\SFAMDLMO61325SMA.M  
 Quant Title : SFAM01.0  
 QLast Update : Mon Jun 16 09:46:58 2025  
 Response via : Initial Calibration



TIC: VD080433.D\data.ms

(16) Methylene chloride (T)

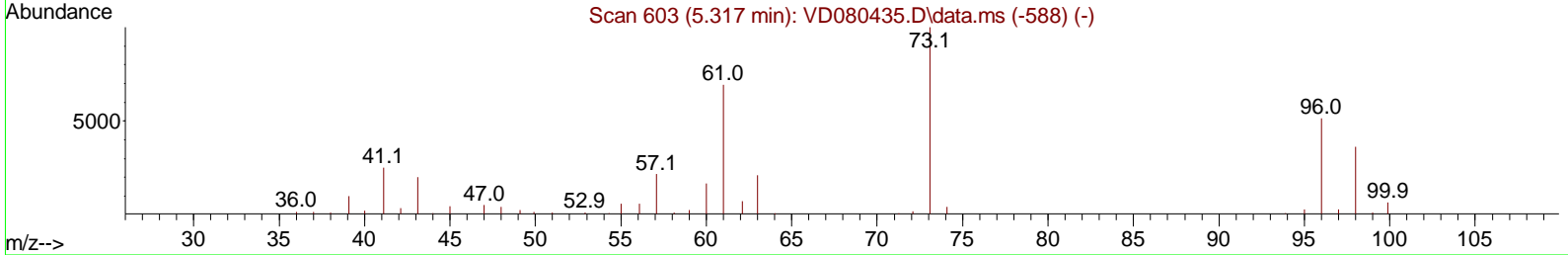
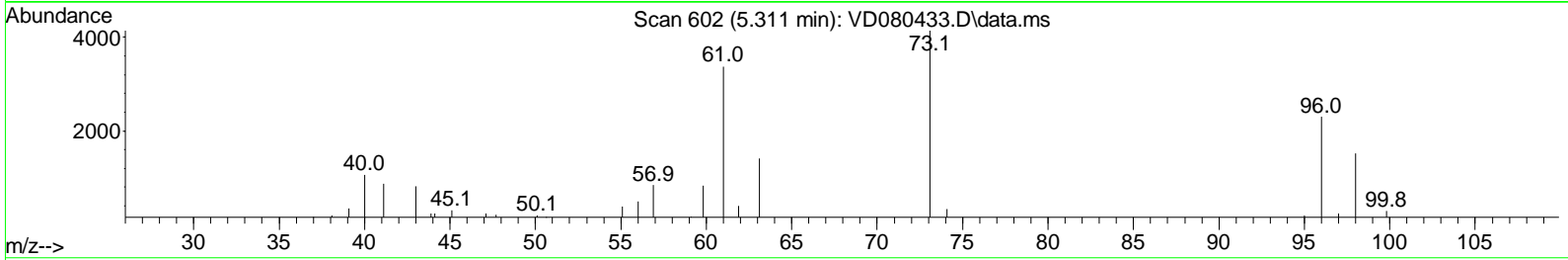
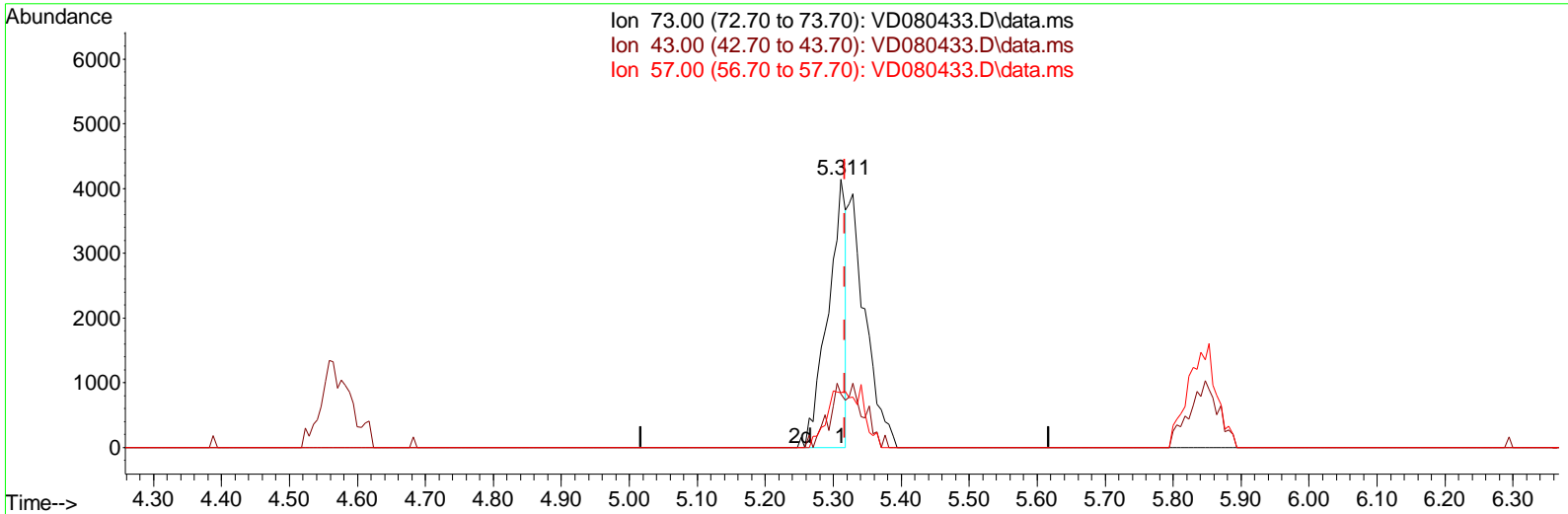
4.811min (+ 0.012) 5.03 ug/L m

response 20282

Ion	Exp%	Act%
84.00	100.00	100.00
86.00	58.40	56.40
49.00	104.00	90.51
0.00	0.00	0.00

Data Path : Z:\voasrv\HPCHEM1\MSVOA\_D\Data\VD061325\  
 Data File : VD080433.D  
 Acq On : 13 Jun 2025 12:07  
 Operator : RP/MD  
 Sample : VSTD2.576  
 Misc : 5.00G/10ml/MSVOA\_D/SOIL  
 ALS Vial : 4 Sample Multiplier: 1

Quant Time: Jun 16 09:48:33 2025  
 Quant Method : Z:\voasrv\HPCHEM1\MSVOA\_D\Method\SFAMDLMO61325SMA.M  
 Quant Title : SFAM01.0  
 QLast Update : Mon Jun 16 09:46:58 2025  
 Response via : Initial Calibration



TIC: VD080433.D\data.ms

(18) Methyl tert-butyl Ether (T)

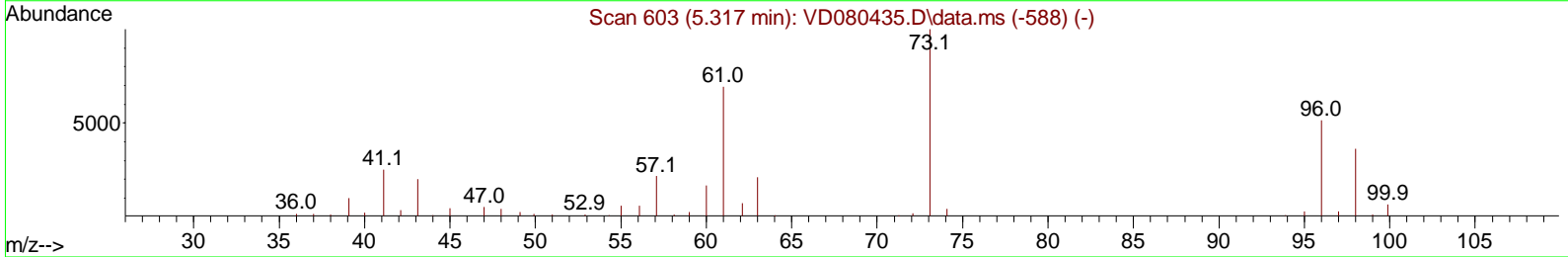
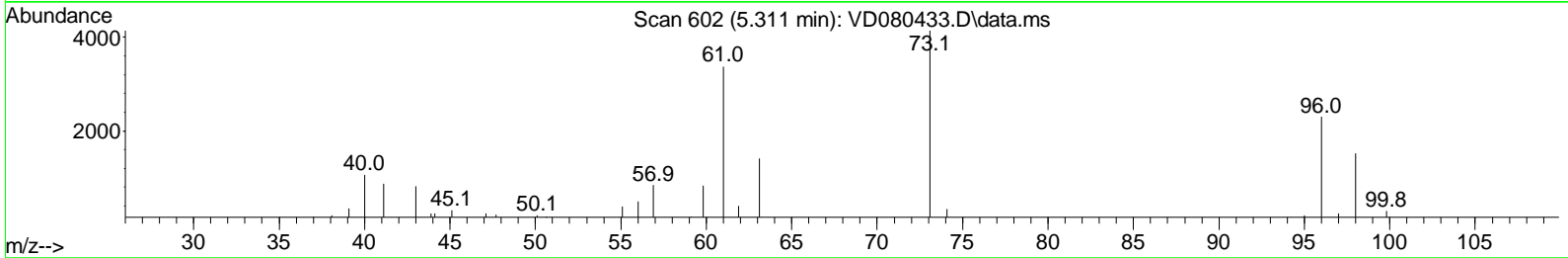
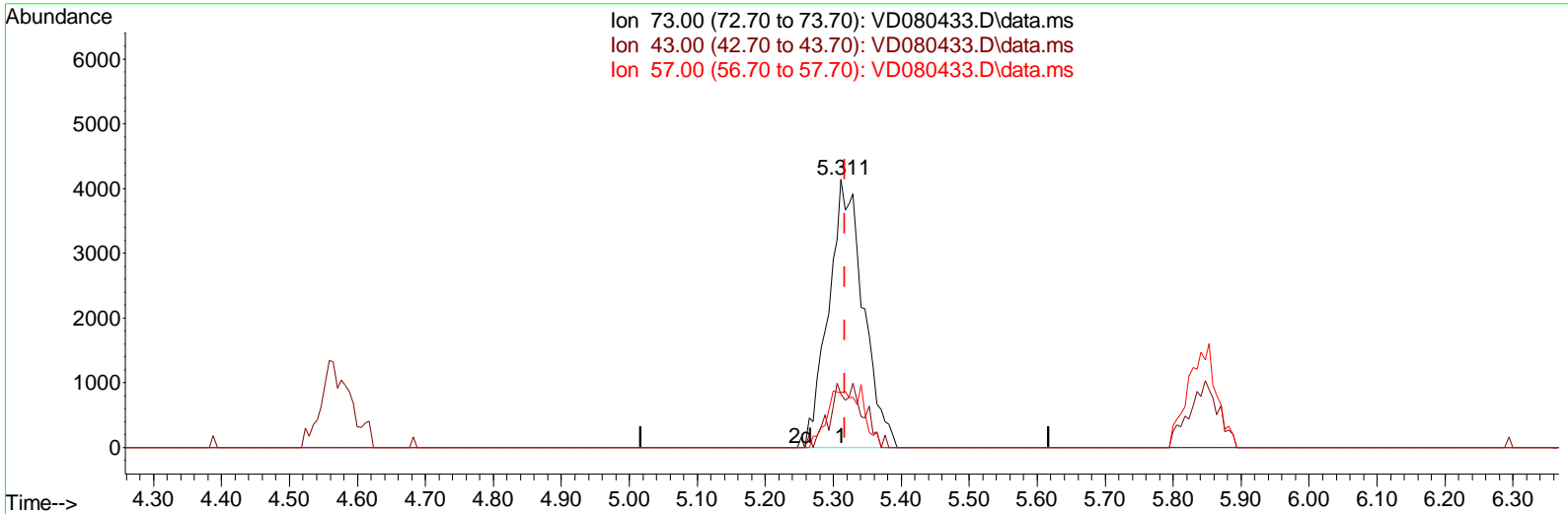
5.311min (-0.006) 1.17 ug/L

response 7494

Ion	Exp%	Act%
73.00	100.00	100.00
43.00	18.30	15.00
57.00	14.00	19.50#
0.00	0.00	0.00

Data Path : Z:\voasrv\HPCHEM1\MSVOA\_D\Data\VD061325\  
 Data File : VD080433.D  
 Acq On : 13 Jun 2025 12:07  
 Operator : RP/MD  
 Sample : VSTD2.576  
 Misc : 5.00G/10ml/MSVOA\_D/SOIL  
 ALS Vial : 4 Sample Multiplier: 1

Quant Time: Jun 16 09:48:33 2025  
 Quant Method : Z:\voasrv\HPCHEM1\MSVOA\_D\Method\SFAMDLMO61325SMA.M  
 Quant Title : SFAM01.0  
 QLast Update : Mon Jun 16 09:46:58 2025  
 Response via : Initial Calibration



TIC: VD080433.D\data.ms

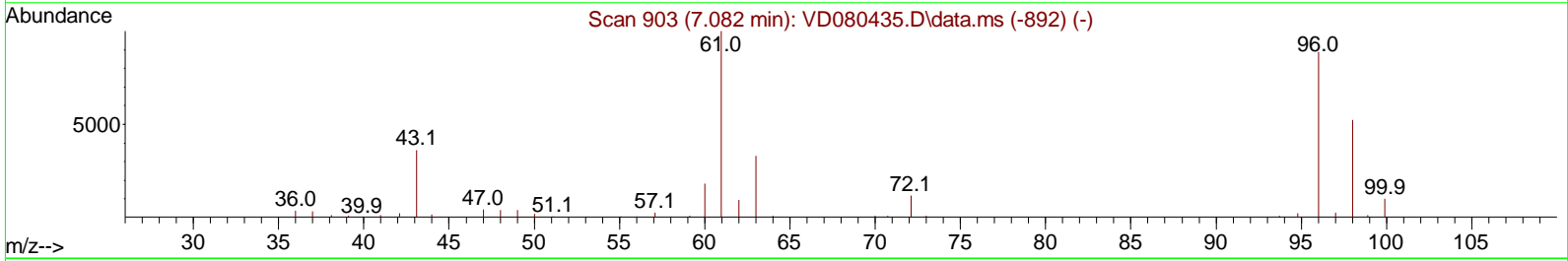
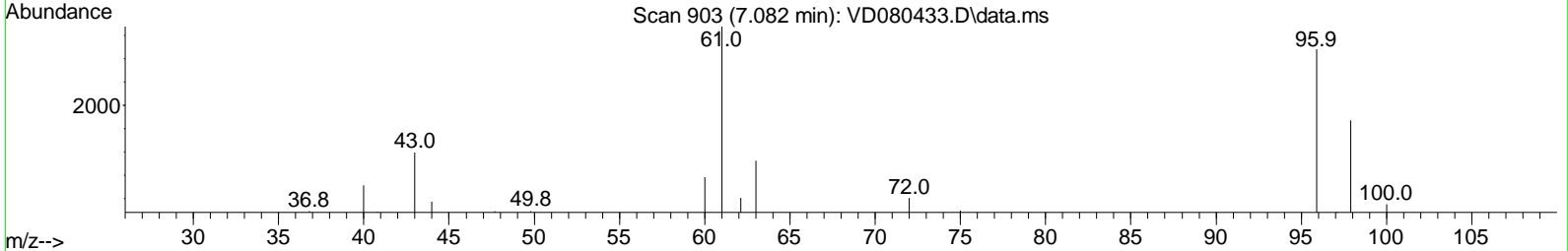
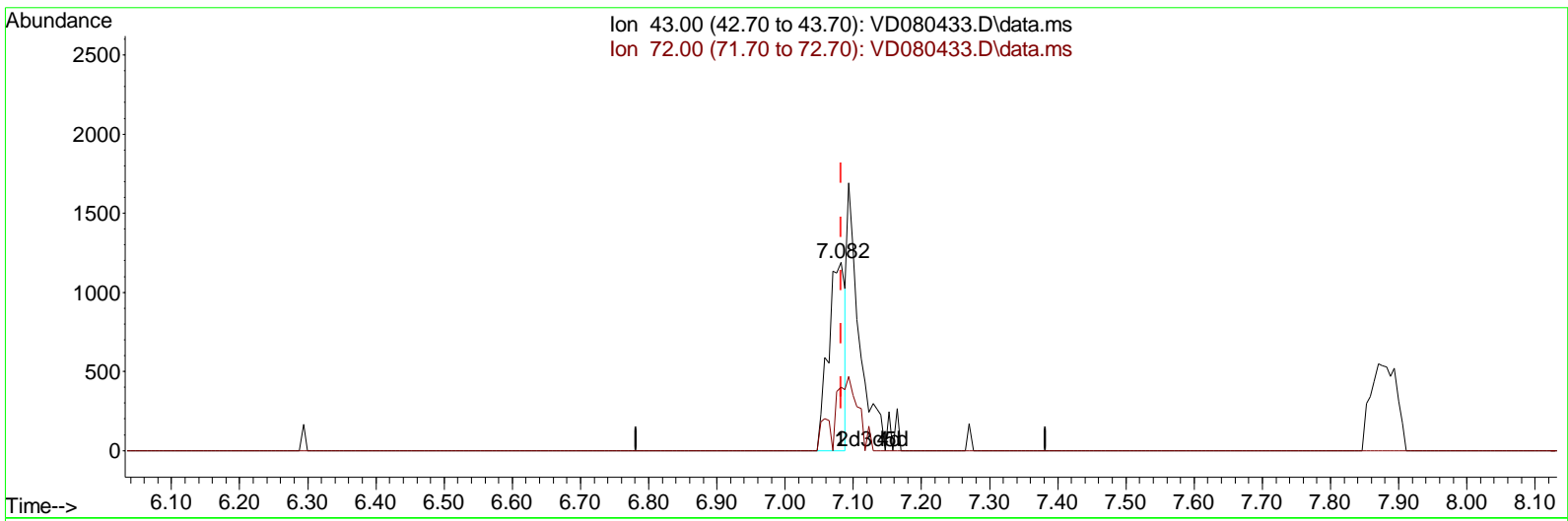
(18) Methyl tert-butyl Ether (T)

5.311min (-0.006) 2.28 ug/L m

response	14655
Ion	Exp% Act%
73.00	100.00 100.00
43.00	18.30 7.67#
57.00	14.00 9.97#
0.00	0.00 0.00

Data Path : Z:\voasrv\HPCHEM1\MSVOA\_D\Data\VD061325\  
 Data File : VD080433.D  
 Acq On : 13 Jun 2025 12:07  
 Operator : RP/MD  
 Sample : VSTD2.576  
 Misc : 5.00G/10ml /MSVOA\_D/SOIL  
 ALS Vial : 4 Sample Multiplier: 1

Quant Time: Jun 16 09:48:33 2025  
 Quant Method : Z:\voasrv\HPCHEM1\MSVOA\_D\Method\SFAMDLMO61325SMA.M  
 Quant Title : SFAM01.0  
 QLast Update : Mon Jun 16 09:46:58 2025  
 Response via : Initial Calibration



TIC: VD080433.D\data.ms

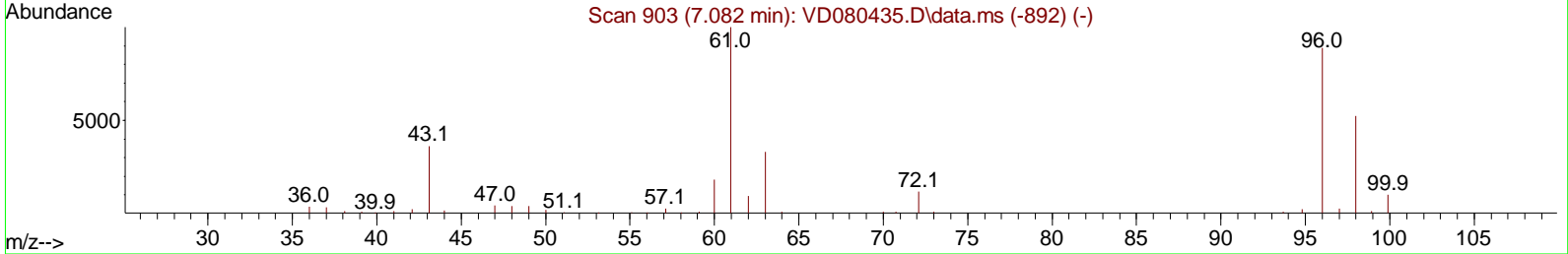
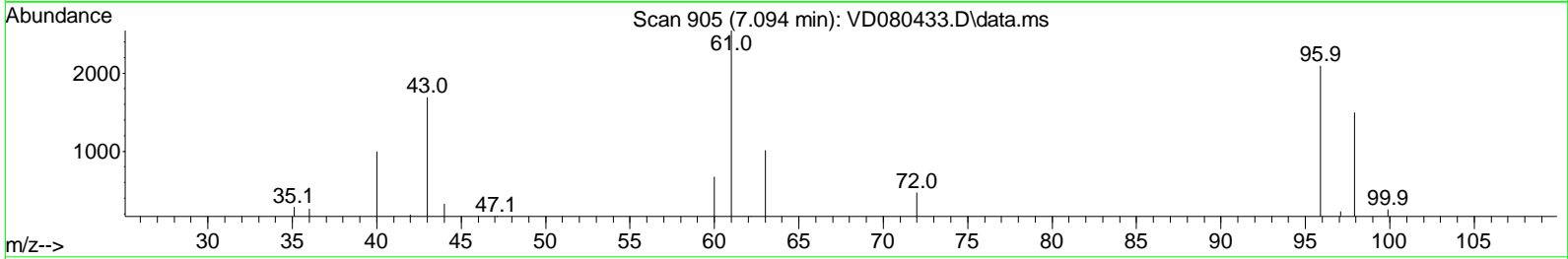
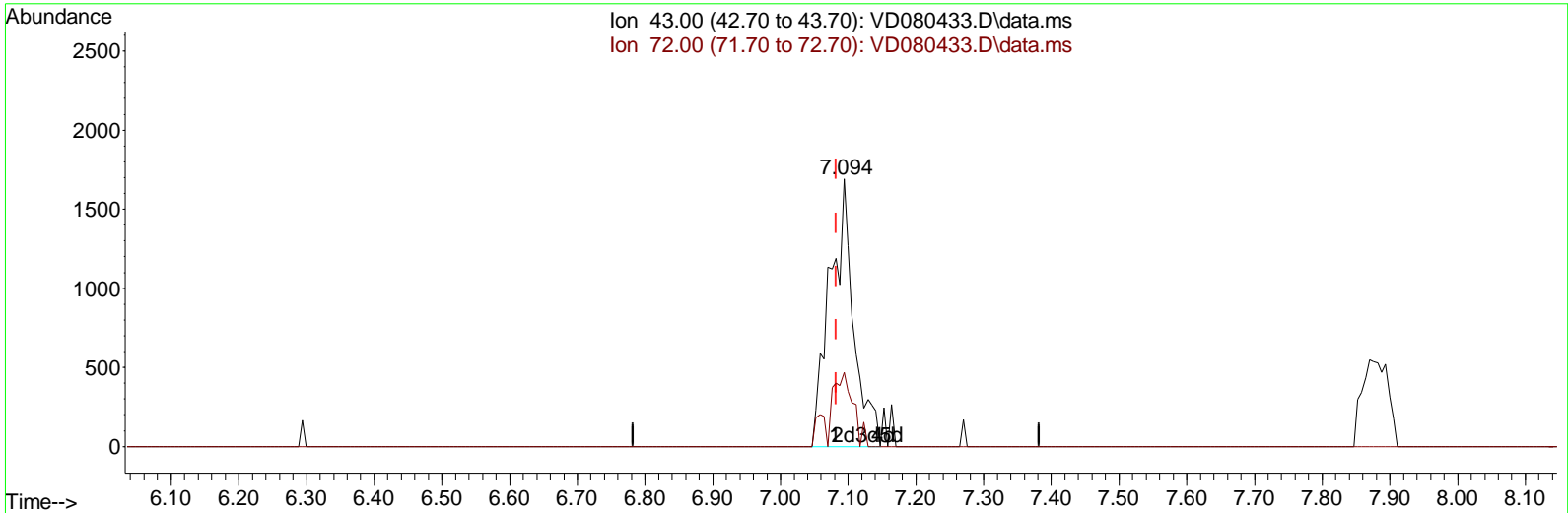
(22) 2-Butanone (T)

7.082min (-0.000) 2.56 ug/L

response	2060	
Ion	Exp%	Act%
43.00	100.00	100.00
72.00	28.80	19.90
0.00	0.00	0.00
0.00	0.00	0.00

Data Path : Z:\voasrv\HPCHEM1\MSVOA\_D\Data\VD061325\  
 Data File : VD080433.D  
 Acq On : 13 Jun 2025 12:07  
 Operator : RP/MD  
 Sample : VSTD2.576  
 Misc : 5.00G/10ml /MSVOA\_D/SOIL  
 ALS Vial : 4 Sample Multiplier: 1

Quant Time: Jun 16 09:48:33 2025  
 Quant Method : Z:\voasrv\HPCHEM1\MSVOA\_D\Method\SFAMDLMO61325SMA.M  
 Quant Title : SFAM01.0  
 QLast Update : Mon Jun 16 09:46:58 2025  
 Response via : Initial Calibration



TIC: VD080433.D\data.ms

(22) 2-Butanone (T)

7.094min (+ 0.012) 5.11 ug/L m

response	4115	
Ion	Exp%	Act%
43.00	100.00	100.00
72.00	28.80	9.96#
0.00	0.00	0.00
0.00	0.00	0.00

Data Path : Z:\voasrv\HPCHEM1\MSVOA\_D\Data\VD061325\  
 Data File : VD080433.D  
 Acq On : 13 Jun 2025 12:07  
 Operator : RP/MD  
 Sample : VSTD2.576  
 Mi sc : 5.00G/10ml /MSVOA\_D/SOIL  
 ALS Vial : 4 Sample Multi plier: 1

Quant Time: Jun 16 09:48:33 2025  
 Quant Method : Z:\voasrv\HPCHEM1\MSVOA\_D\Method\SFAMDLMO61325SMA.M  
 Quant Title : SFAM01.0  
 QLast Update : Mon Jun 16 09:46:58 2025  
 Response via : Initial Calibration

Compound	R.T.	QI on	Response	Conc	Units	Dev(Min)
-----						
Internal Standards						
1) 1,4-Di fluorobenzene	8.776	114	215501	25.00	ug/L	0.00
28) Chlorobenzene-d5	11.576	117	208167	25.00	ug/L	0.00
58) 1,4-Di chlorobenzene-d4	13.517	152	102801	25.00	ug/L	0.00
System Monitoring Compounds						
4) Vinyl Chloride-d3	2.276	65	11570	3.13	ug/L	0.00
7) Chloroethane-d5	2.806	69	9464	3.04	ug/L	0.00
11) 1,1-Di chloroethene-d2	3.917	65	3776	2.97	ug/L	0.00
21) 2-Butanone-d5	6.988	46	3264	5.05	ug/L	0.00
24) Chloroform-d	7.570	84	18231	2.93	ug/L	0.00
26) 1,2-Di chloroethane-d4	8.235	65	9363	3.04	ug/L	0.00
32) Benzene-d6	8.200	84	31182	2.68	ug/L	0.00
36) 1,2-Di chloropropane-d6	9.211	67	10713	2.87	ug/L	0.00
41) Toluene-d8	10.264	98	28173	2.57	ug/L	0.00
43) trans-1,3-Di chloroprop...	10.523	79	3991	2.54	ug/L	0.00
47) 2-Hexanone-d5	10.876	63	2582	4.56	ug/L	0.00
56) 1,1,2,2-Tetrachloroeth...	12.646	84	9082	2.75	ug/L	0.00
66) 1,2-Di chlorobenzene-d4	13.811	152	11216	2.93	ug/L	0.00
Target Compounds						
						Qvalue
2) Dichlorodifluoromethane	1.935	85	10570	3.04	ug/L	98
3) Chloromethane	2.147	50	10703	3.12	ug/L	100
5) Vinyl chloride	2.282	62	11484	2.82	ug/L #	72
6) Bromomethane	2.694	94	5868	2.72	ug/L	96
8) Chloroethane	2.841	64	7583	2.77	ug/L	89
9) Trichlorofluoromethane	3.170	101	15258	2.83	ug/L	99
10) 1,1,2-Tri chloro-1,2,2-...	3.970	101	9811m	2.90	ug/L	
12) 1,1-Di chloroethene	3.947	96	7918	2.71	ug/L	84
13) Acetone	4.017	43	3814m	6.52	ug/L	
14) Carbon disulfide	4.270	76	27687	2.80	ug/L #	90
15) Methyl Acetate	4.559	43	4038m	2.91	ug/L	
16) Methyl ethyl chloride	4.811	84	20282m	5.03	ug/L	
17) trans-1,2-Di chloroethene	5.323	96	8773	2.67	ug/L	90
18) Methyl tert-butyl Ether	5.311	73	14655m	2.28	ug/L	
19) 1,1-Di chloroethane	6.111	63	15289	2.68	ug/L	94
20) cis-1,2-Di chloroethene	7.076	96	8581	2.45	ug/L	96
22) 2-Butanone	7.094	43	4115m	5.11	ug/L	
23) Bromochloromethane	7.423	128	4791	2.68	ug/L #	85
25) Chloroform	7.594	83	16759	2.64	ug/L	92
27) 1,2-Di chloroethane	8.323	62	9673	2.66	ug/L #	90
29) Cyclohexane	7.876	56	10512	2.27	ug/L #	61
30) 1,1,1-Tri chloroethane	7.788	97	14241	2.72	ug/L	99
31) Carbon tetrachloride	7.988	117	13661	2.80	ug/L #	71
33) Benzene	8.247	78	32514	2.54	ug/L	100
34) Trichloroethene	9.029	95	9709	2.71	ug/L	91
35) Methyl cyclohexane	9.270	83	12457	2.36	ug/L	95
37) 1,2-Di chloropropane	9.305	63	9297	2.65	ug/L #	91
38) Bromodichloromethane	9.582	83	11894	2.59	ug/L #	93
39) cis-1,3-Di chloropropene	10.017	75	12128	2.32	ug/L	96
40) 4-Methyl -2-pentanone	10.158	43	7751	4.35	ug/L	99
42) Toluene	10.335	91	32326	2.30	ug/L	100

Data Path : Z:\voasrv\HPCHEM1\MSVOA\_D\Data\VD061325\  
 Data File : VD080433.D  
 Acq On : 13 Jun 2025 12:07  
 Operator : RP/MD  
 Sample : VSTD2.576  
 Misc : 5.00G/10ml/MSVOA\_D/SOIL  
 ALS Vial : 4 Sample Multiplier: 1

Quant Time: Jun 16 09:48:33 2025  
 Quant Method : Z:\voasrv\HPCHEM1\MSVOA\_D\Method\SFAMDLMO61325SMA.M  
 Quant Title : SFAM01.0  
 QLast Update : Mon Jun 16 09:46:58 2025  
 Response via : Initial Calibration

Compound	R. T.	QI on	Response	Conc	Units	Dev(Min)
44) trans-1,3-Dichloropropene	10.552	75	10345	2.29	ug/L	94
45) 1,1,2-Trichloroethane	10.735	97	7530	2.63	ug/L	82
46) Tetrachloroethene	10.805	164	8128	2.60	ug/L	94
48) 2-Hexanone	10.917	43	5843	4.49	ug/L	93
49) Dibromochloromethane	11.064	129	8536	2.51	ug/L	95
50) 1,2-Dibromoethane	11.170	107	6476	2.40	ug/L #	92
51) Chlorobenzene	11.599	112	24141	2.52	ug/L	92
52) Ethyl benzene	11.682	91	34886	2.31	ug/L	95
53) m,p-Xylene	11.793	106	12978	2.22	ug/L	96
54) o-Xylene	12.117	106	12023	2.15	ug/L	94
55) Styrene	12.135	104	21208	2.12	ug/L	100
57) 1,1,2,2-Tetrachloroethane	12.670	83	8538	2.57	ug/L	97
59) Bromoform	12.299	173	5624	2.63	ug/L #	97
60) Isopropyl benzene	12.417	105	32572	2.38	ug/L	98
61) 1,2,3-Trichloropropane	12.723	75	6111	2.89	ug/L	95
62) 1,3,5-Trimethyl benzene	12.899	105	24705	2.31	ug/L	100
63) 1,2,4-Trimethyl benzene	13.205	105	23374	2.20	ug/L	99
64) 1,3-Dichlorobenzene	13.452	146	18465	2.60	ug/L	96
65) 1,4-Dichlorobenzene	13.535	146	19836	2.69	ug/L	99
67) 1,2-Dichlorobenzene	13.829	146	17501	2.65	ug/L	90
68) 1,2-Dibromo-3-chloropropane	14.440	75	1382	2.87	ug/L #	62
69) 1,3,5-Trichlorobenzene	14.593	180	13205	2.70	ug/L	95
70) 1,2,4-trichlorobenzene	15.093	180	10809	2.63	ug/L	93
71) Naphthalene	15.329	128	17383	2.37	ug/L	97
72) 1,2,3-Trichlorobenzene	15.517	180	9883	2.60	ug/L	99

(#) = qualifier out of range (m) = manual integration (+) = signals summed

Data Path : Z:\voasrv\HPCHEM1\MSVOA\_D\Data\VD061325\  
 Data File : VD080433.D  
 Acq On : 13 Jun 2025 12:07  
 Operator : RP/MD  
 Sample : VSTD2.576  
 Mi sc : 5.00G/10ml /MSVOA\_D/SOIL  
 ALS Vial : 4 Sample Multiplier: 1

Quant Time: Jun 16 09:48:33 2025  
 Quant Method : Z:\voasrv\HPCHEM1\MSVOA\_D\Method\SFAMDLM061325SMA.M  
 Quant Title : SFAM01.0  
 QLast Update : Mon Jun 16 09:46:58 2025  
 Response via : Initial Calibration

