

Data Path : Z:\VOASRV\HPCHEM1\MSVOA D\DATA\VD061418\
 Data File : VD058135.D
 Acq On : 14 Jun 2018 14:58
 Operator : VA/AP
 Sample : J3420-04RE
 Misc : 6.44g/5ml/MSVOA D/SOIL
 ALS Vial : 8 Sample Multiplier: 1

Instrument :
 MSVOA_D
 ClientSampled :

Quant Time: Jun 15 06:04:05 2018
 Quant Method : Z:\VOASRV\HPCHEM1\MSVOA_D\METHOD\82D060618S.M
 Quant Title : SW846 8260
 QLast Update : Thu Jun 07 08:57:33 2018
 Response via : Initial Calibration

Internal Standards	R.T.	QIon	Response	Conc	Units	Dev(Min)
1) Pentafluorobenzene	5.65	168	24274	50.00	ug/l	0.00
34) 1,4-Difluorobenzene	6.70	114	37820	50.00	ug/l	0.00
63) Chlorobenzene-d5	10.70	117	36775	50.00	ug/l	0.00
72) 1,4-Dichlorobenzene-d4	12.91	152	23549	50.00	ug/l	0.00

System Monitoring Compounds

33) 1,2-Dichloroethane-d4	6.02	65	17210	70.92	ug/l	0.00
Spiked Amount				50.000		
				Recovery	=	141.84%
35) Dibromofluoromethane	5.54	113	12236	41.82	ug/l	-0.02
Spiked Amount				50.000		
				Recovery	=	83.64%
50) Toluene-d8	8.72	98	30722	44.16	ug/l	0.00
Spiked Amount				50.000		
				Recovery	=	88.32%
62) 4-Bromofluorobenzene	11.94	95	15927	52.48	ug/l	0.00
Spiked Amount				50.000		
				Recovery	=	104.96%

Target Compounds

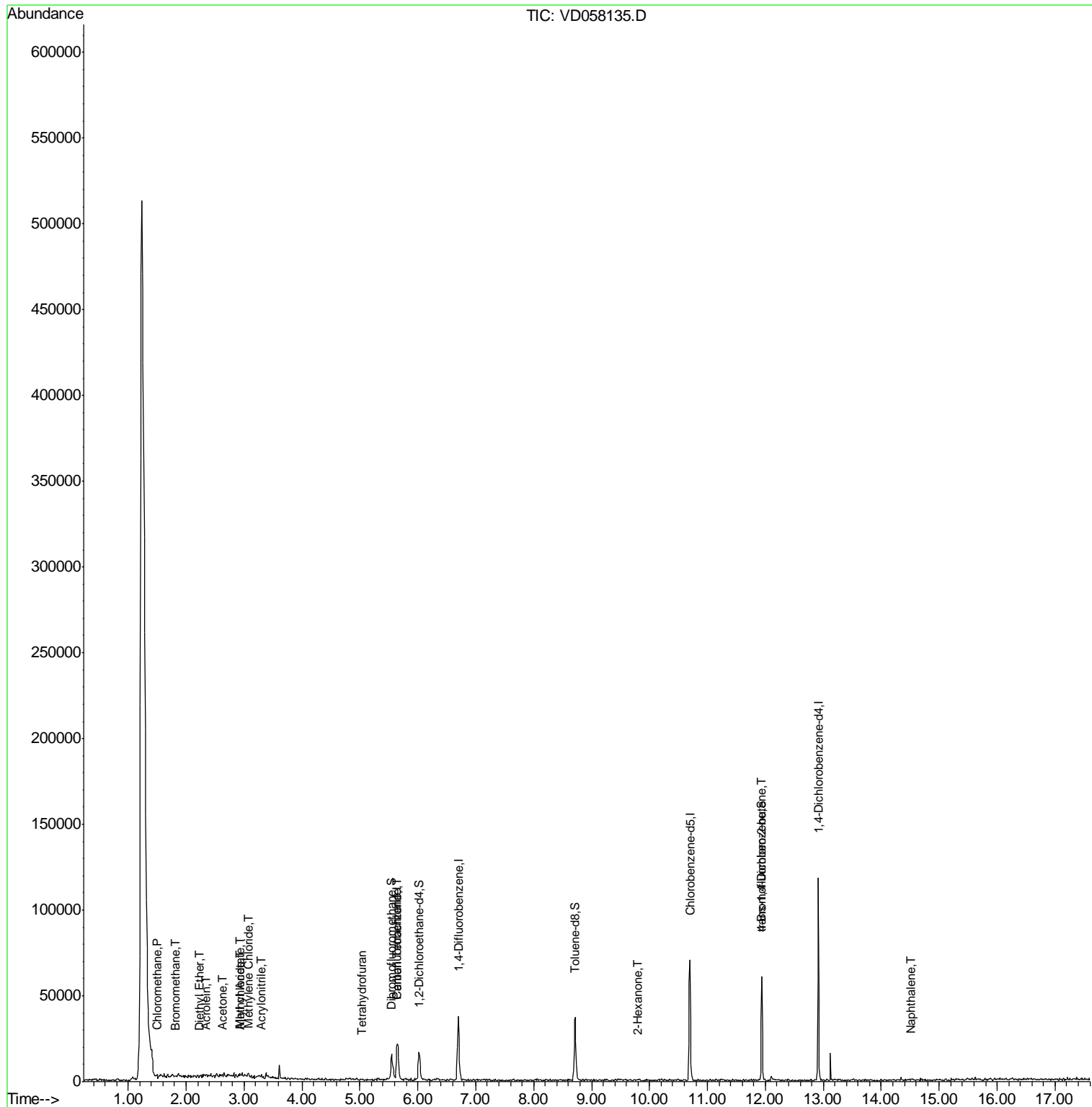
						Qvalue
3) Chloromethane	1.49	50	244	1.521	ug/l #	41
5) Bromomethane	1.83	94	633	10.399	ug/l #	3
8) Diethyl Ether	2.23	74	226	5.730	ug/l #	1
13) Acrolein	2.35	56	188	20.192	ug/l #	16
14) Allyl chloride	2.95	41	910	4.052	ug/l #	10
15) Acrylonitrile	3.30	53	204	5.364	ug/l #	15
16) Acetone	2.62	43	2308	66.012	ug/l #	57
18) Methyl Acetate	2.93	43	207	3.060	ug/l #	66
20) Methylene Chloride	3.08	84	888	3.152	ug/l #	25
29) Tetrahydrofuran	5.03	42	185	4.441	ug/l #	39
38) Carbon Tetrachloride	5.66	117	1409	3.431	ug/l #	12
59) 2-Hexanone	9.80	43	198	1.414	ug/l #	31
81) trans-1,4-Dichloro-2-buten	11.94	75	7474	85.304	ug/l #	6
82) 4-Chlorotoluene	12.33	91	197	Below Cal	#	50
95) Naphthalene	14.53	128	1051	1.382	ug/l #	70

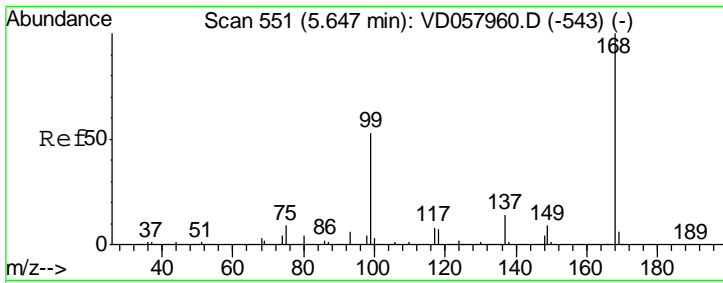
(#) = qualifier out of range (m) = manual integration (+) = signals summed

Data Path : Z:\VOASRV\HPCHEM1\MSVOA D\DATA\VD061418\
 Data File : VD058135.D
 Acq On : 14 Jun 2018 14:58
 Operator : VA/AP
 Sample : J3420-04RE
 Misc : 6.44µ/5ml/MSVOA D/SOIL
 ALS Vial : 8 Sample Multiplier: 1

Instrument :
 MSVOA_D
 ClientSampleId :

Quant Time: Jun 15 06:04:05 2018
 Quant Method : Z:\VOASRV\HPCHEM1\MSVOA_D\METHOD\82D060618S.M
 Quant Title : SW846 8260
 QLast Update : Thu Jun 07 08:57:33 2018
 Response via : Initial Calibration



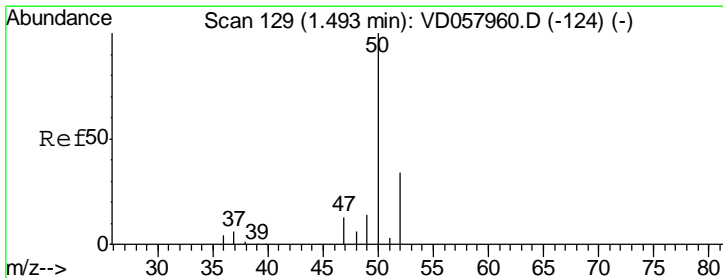
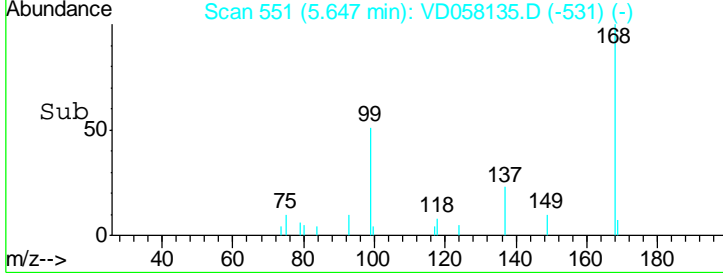
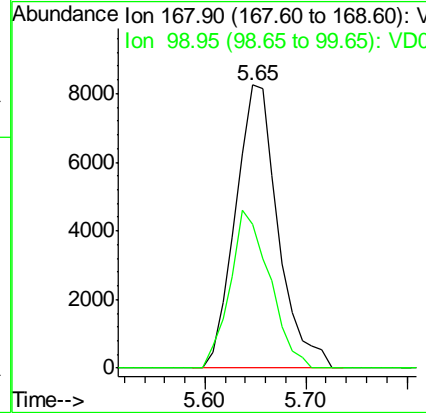
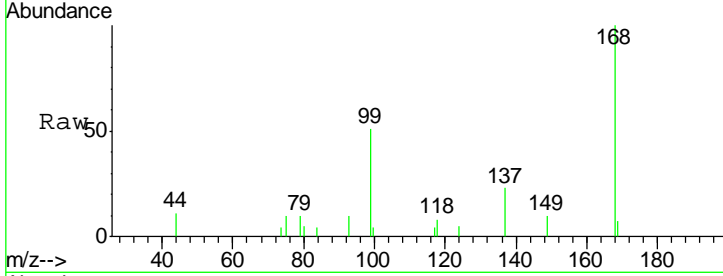


#1
 Pentafluorobenzene
 Concen: 50.000 ug/l
 RT: 5.65 min Scan# 551
 Delta R.T. -0.00 min
 Lab File: VD058135.D
 Acq: 14 Jun 2018 14:58

Instrument :
 MSVOA_D
 ClientSampled :

Tot Ion: 168 Resp: 24274

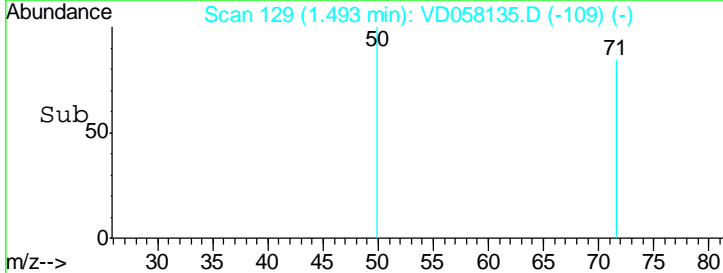
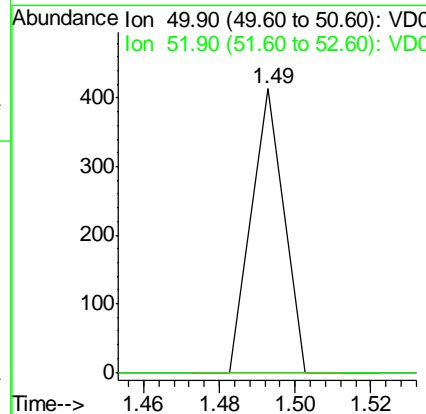
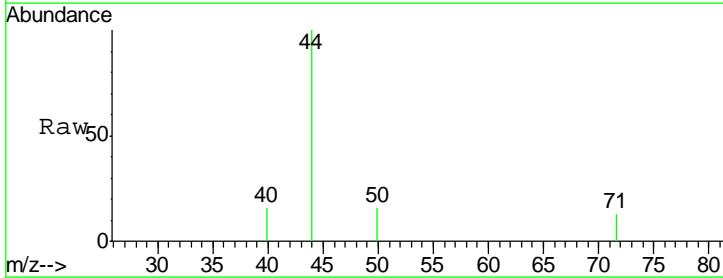
Ion	Ratio	Lower	Upper
168	100		
99	50.9	46.8	70.2

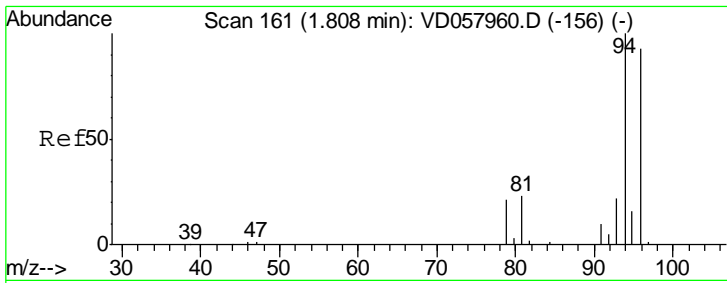


#3
 Chloromethane
 Concen: 1.521 ug/l
 RT: 1.49 min Scan# 129
 Delta R.T. -0.00 min
 Lab File: VD058135.D
 Acq: 14 Jun 2018 14:58

Tgt Ion: 50 Resp: 244

Ion	Ratio	Lower	Upper
50	100		
52	0.0	27.2	40.8#

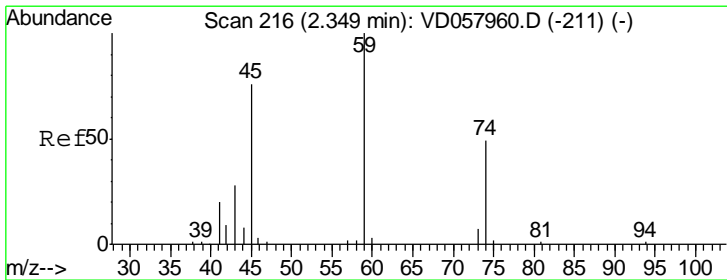
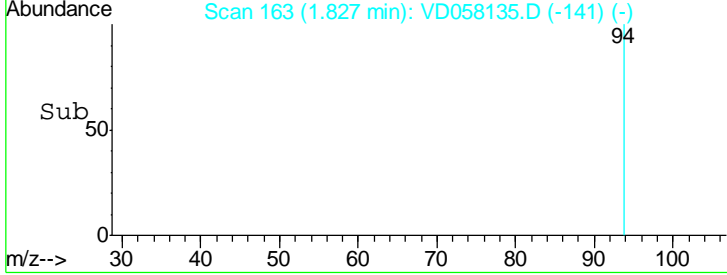
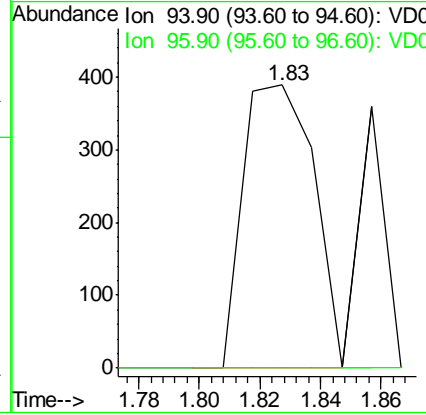
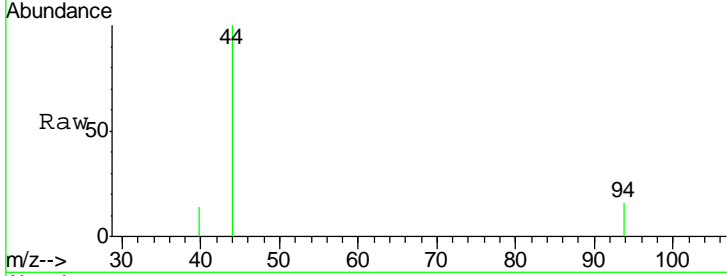




#5
 Bromomethane
 Concen: 10.399 ug/l
 RT: 1.83 min Scan# 163
 Delta R.T. 0.02 min
 Lab File: VD058135.D
 Acq: 14 Jun 2018 14:58

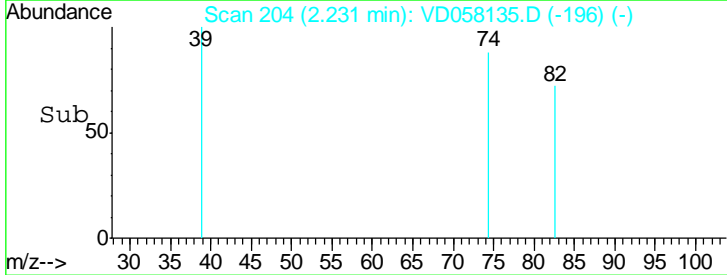
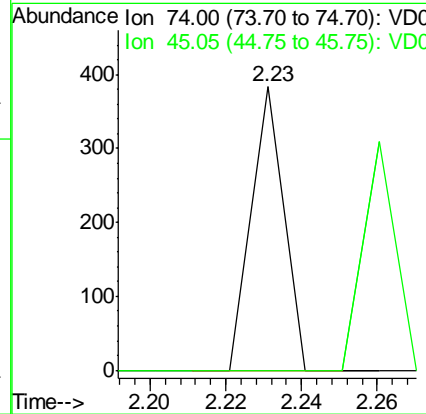
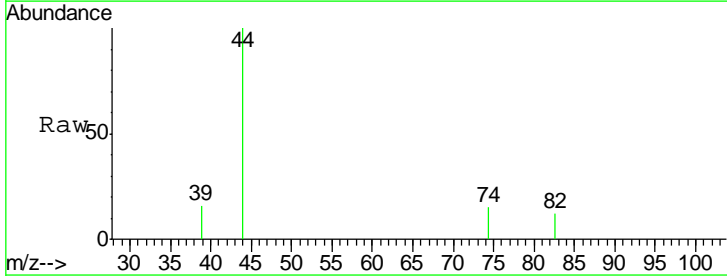
Instrument :
 MSVOA_D
 ClientSampled :

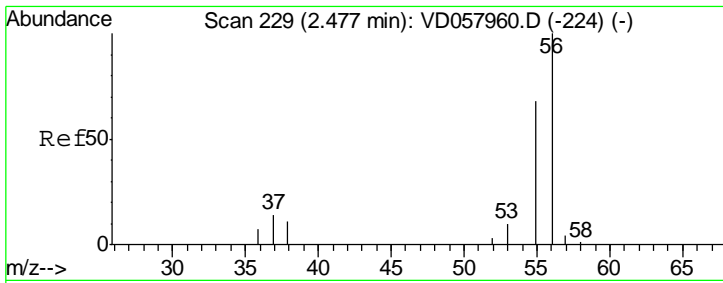
Tgt Ion: 94 Resp: 633
 Ion Ratio Lower Upper
 94 100
 96 0.0 74.3 111.5#



#8
 Diethyl Ether
 Concen: 5.730 ug/l
 RT: 2.23 min Scan# 204
 Delta R.T. -0.12 min
 Lab File: VD058135.D
 Acq: 14 Jun 2018 14:58

Tgt Ion: 74 Resp: 226
 Ion Ratio Lower Upper
 74 100
 45 0.0 77.1 231.3#

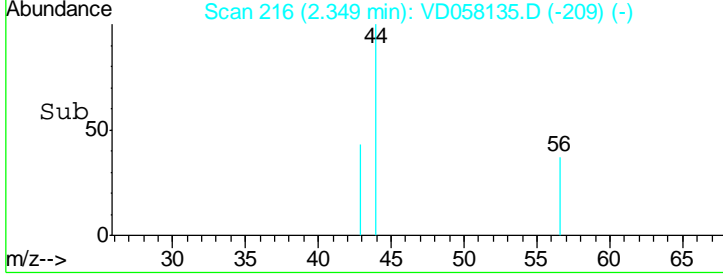
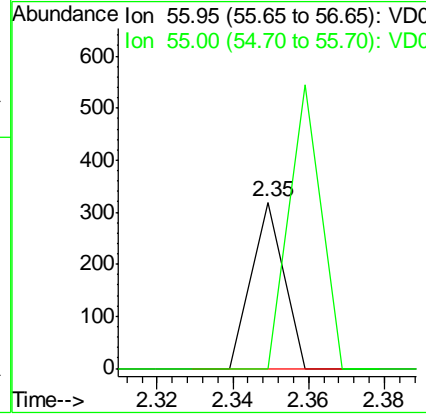
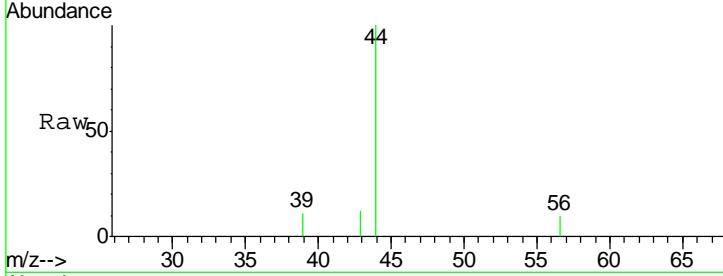




#13
 Acrolein
 Concen: 20.192 ug/l
 RT: 2.35 min Scan# 216
 Delta R.T. -0.13 min
 Lab File: VD058135.D
 Acq: 14 Jun 2018 14:58

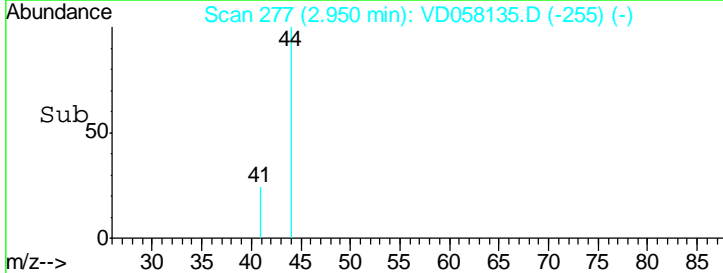
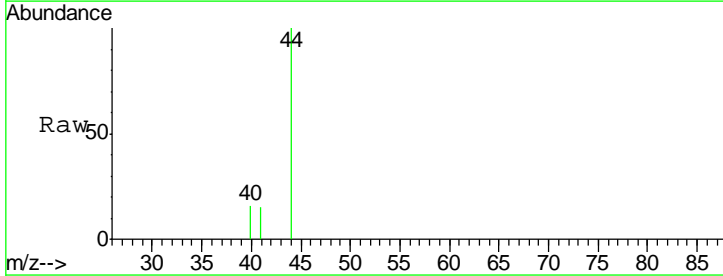
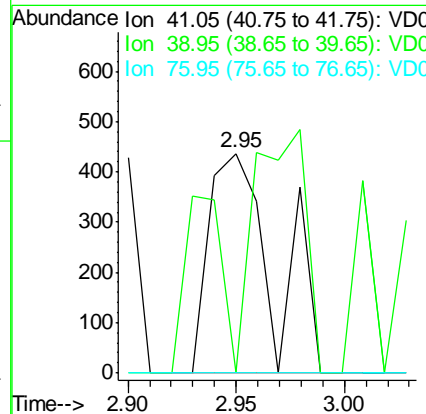
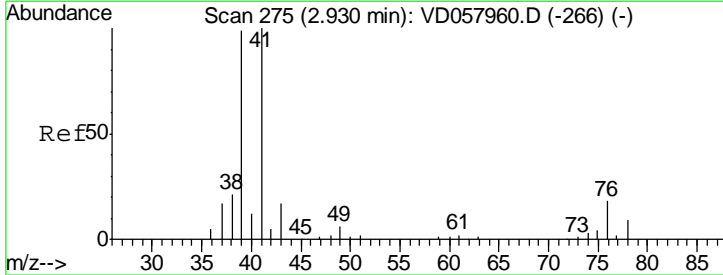
Instrument :
 MSVOA_D
 ClientSampled :

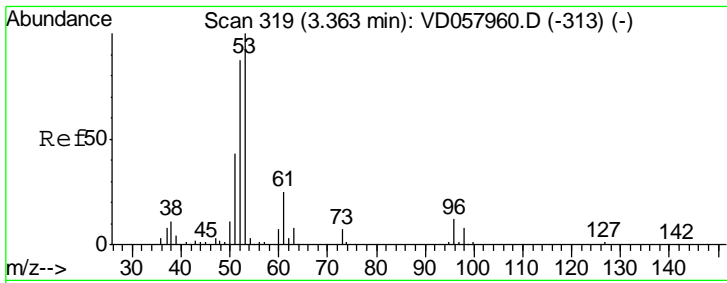
Tgt Ion: 56 Resp: 188
 Ion Ratio Lower Upper
 56 100
 55 0.0 54.0 81.0#



#14
 Allyl chloride
 Concen: 4.052 ug/l
 RT: 2.95 min Scan# 277
 Delta R.T. 0.02 min
 Lab File: VD058135.D
 Acq: 14 Jun 2018 14:58

Tgt Ion: 41 Resp: 910
 Ion Ratio Lower Upper
 41 100
 39 0.0 79.5 119.3#
 76 0.0 20.7 31.1#

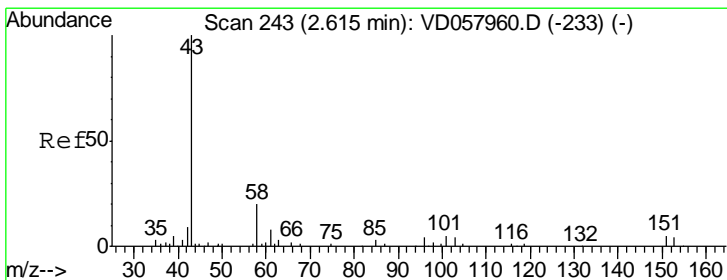
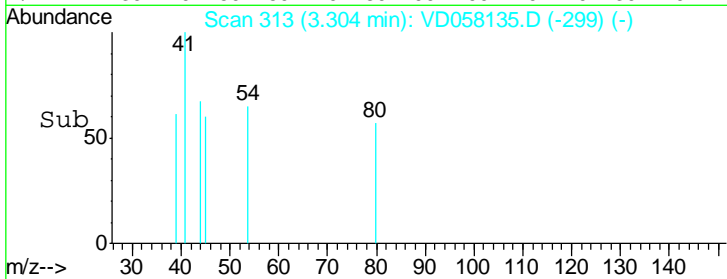
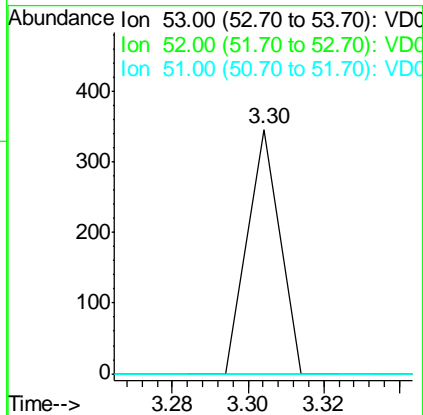
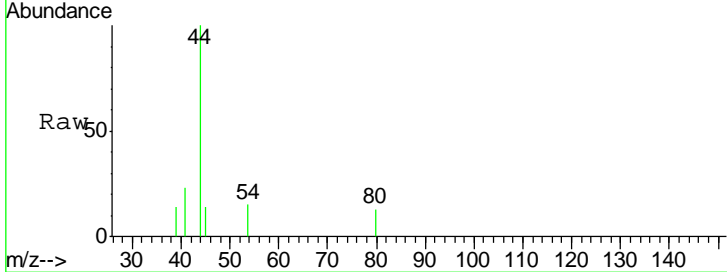




#15
 Acrylonitrile
 Concen: 5.364 ug/l
 RT: 3.30 min Scan# 313
 Delta R.T. -0.06 min
 Lab File: VD058135.D
 Acq: 14 Jun 2018 14:58

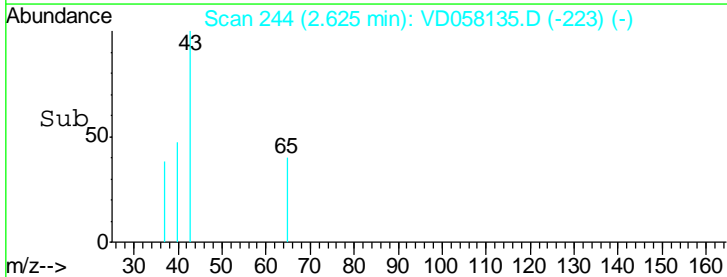
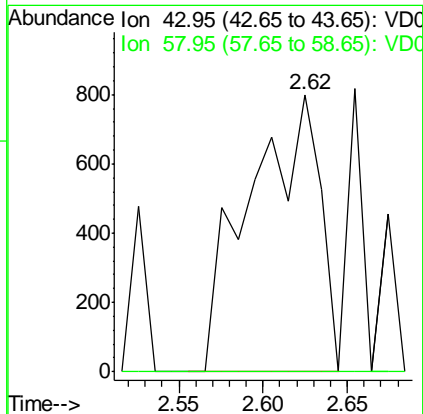
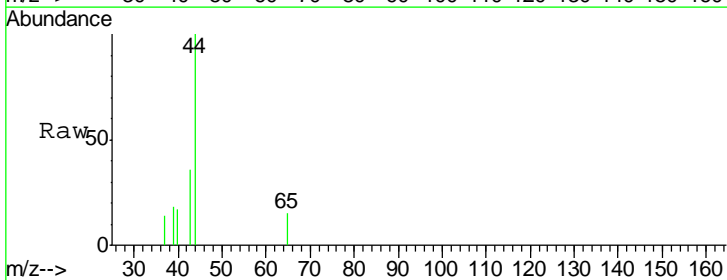
Instrument :
 MSVOA_D
 ClientSampled :

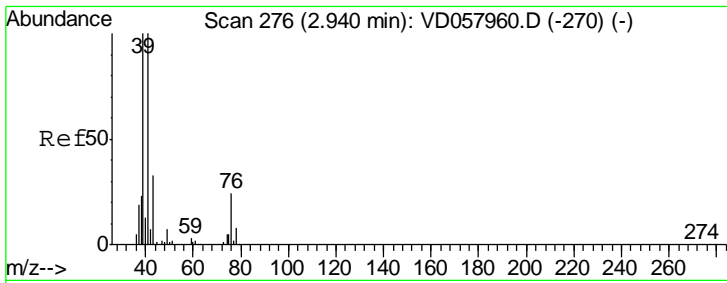
Tgt Ion	Resp	Lower	Upper
53	100		
52	0.0	69.9	104.9#
51	0.0	34.3	51.5#



#16
 Acetone
 Concen: 66.012 ug/l
 RT: 2.62 min Scan# 244
 Delta R.T. 0.01 min
 Lab File: VD058135.D
 Acq: 14 Jun 2018 14:58

Tgt Ion	Resp	Lower	Upper
43	100		
58	0.0	15.8	23.8#

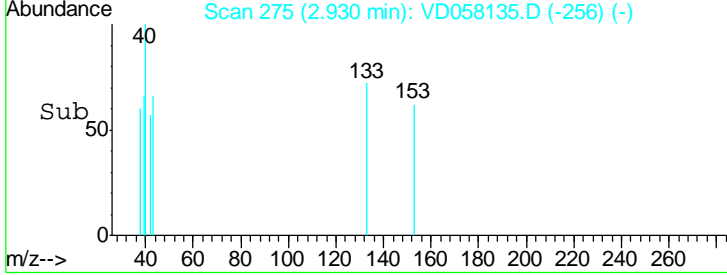
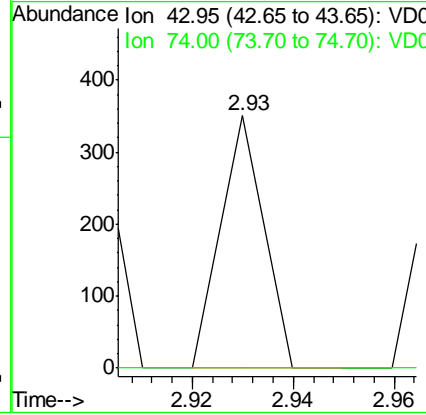
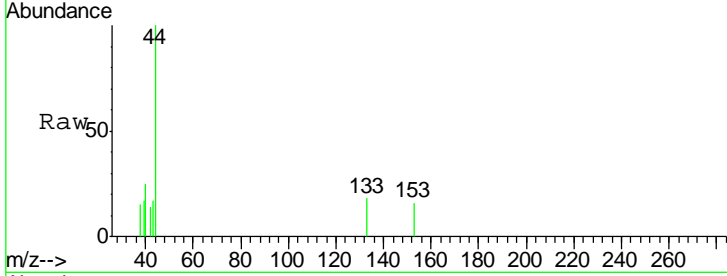




#18
 Methyl Acetate
 Concen: 3.060 ug/l
 RT: 2.93 min Scan# 275
 Delta R.T. -0.01 min
 Lab File: VD058135.D
 Acq: 14 Jun 2018 14:58

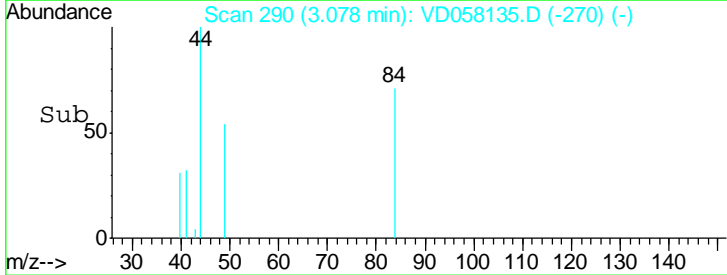
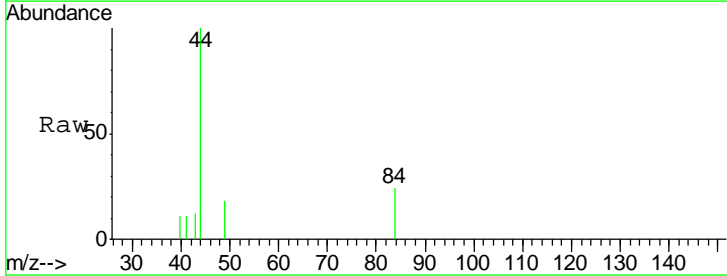
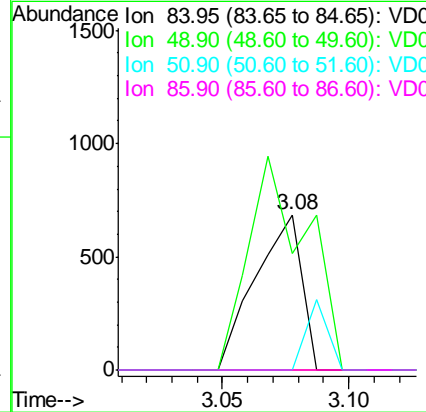
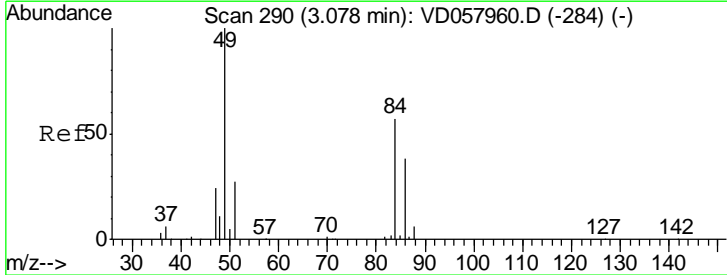
Instrument :
 MSVOA_D
 ClientSampled :

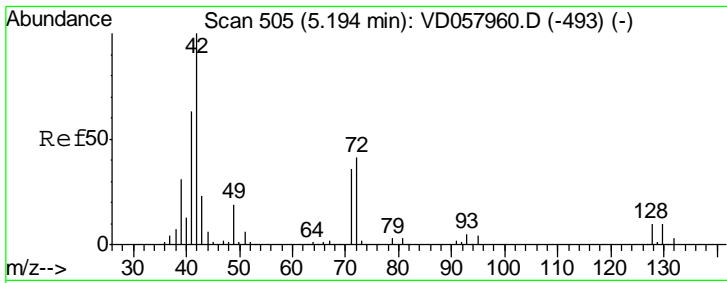
Tgt Ion	Ratio	Lower	Upper
43	100		
74	0.0	11.2	16.8#



#20
 Methylene Chloride
 Concen: 3.152 ug/l
 RT: 3.08 min Scan# 290
 Delta R.T. 0.00 min
 Lab File: VD058135.D
 Acq: 14 Jun 2018 14:58

Tgt Ion	Ratio	Lower	Upper
84	100		
49	75.1	141.4	212.0#
51	0.0	38.3	57.5#
86	0.0	52.9	79.3#

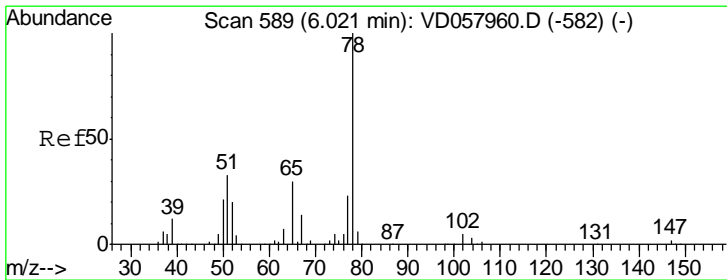
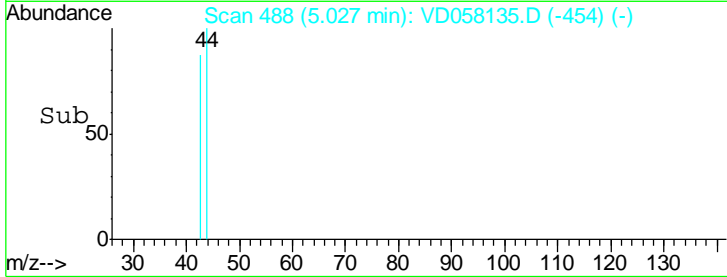
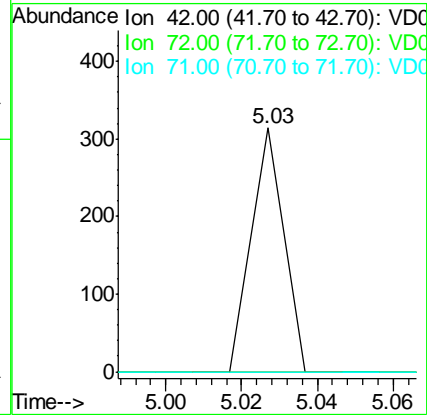
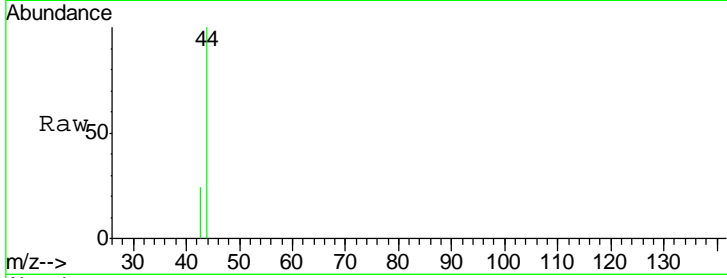




#29
 Tetrahydrofuran
 Concen: 4.441 ug/l
 RT: 5.03 min Scan# 488
 Delta R.T. -0.17 min
 Lab File: VD058135.D
 Acq: 14 Jun 2018 14:58

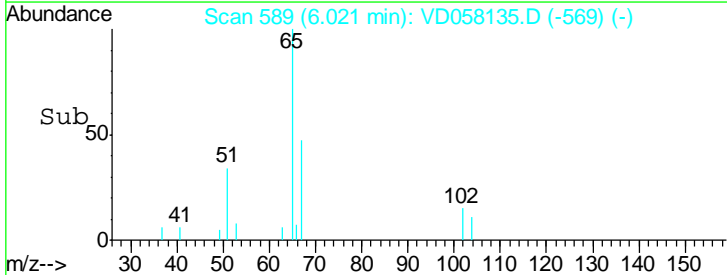
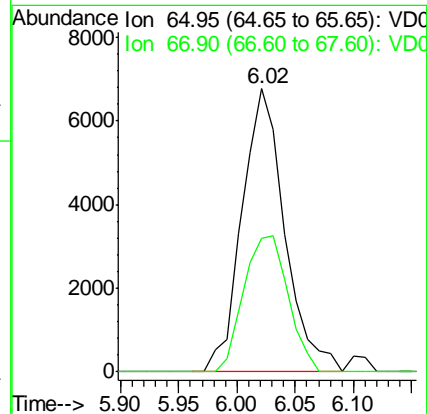
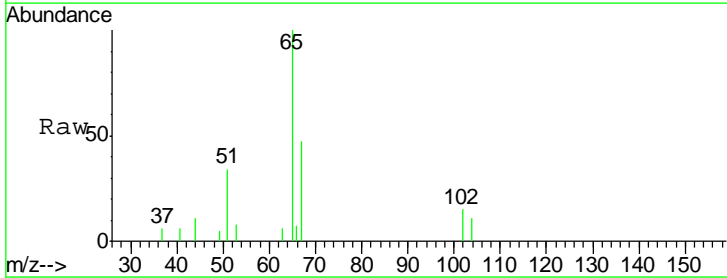
Instrument :
 MSVOA_D
 ClientSampled :

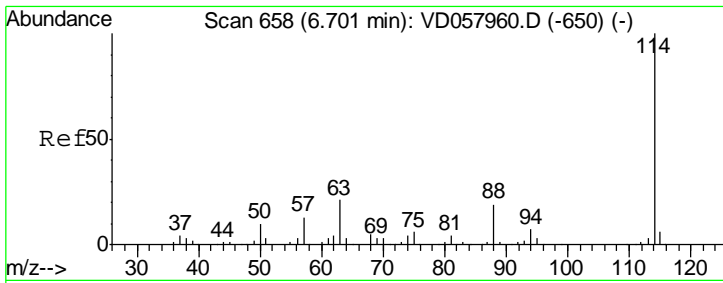
Tgt Ion	Resp	Lower	Upper
42	100		
72	0.0	28.5	42.7#
71	0.0	27.9	41.9#



#33
 1,2-Dichloroethane-d4
 Concen: N.D. ug/l
 RT: 6.02 min Scan# 589
 Delta R.T. -0.00 min
 Lab File: VD058135.D
 Acq: 14 Jun 2018 14:58

Tgt Ion	Resp	Lower	Upper
65	100		
67	47.2	0.0	94.0

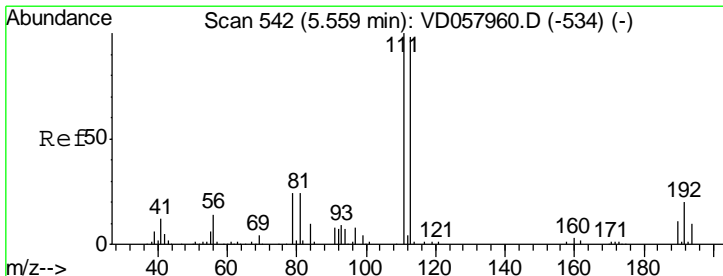
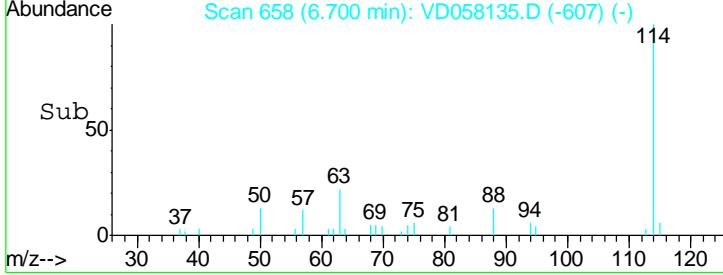
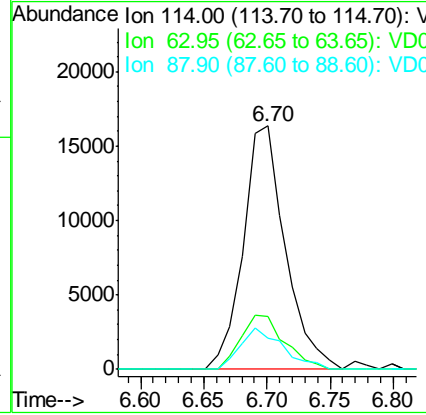
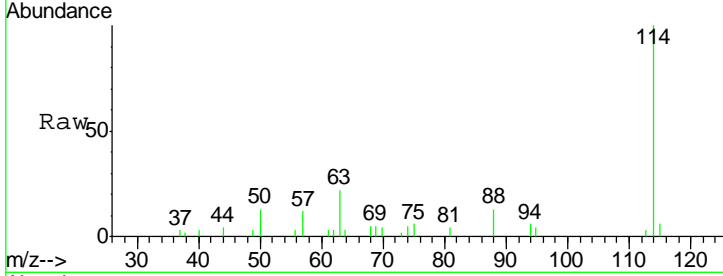




#34
 1,4-Difluorobenzene
 Concen: 50.000 ug/l
 RT: 6.70 min Scan# 658
 Delta R.T. -0.00 min
 Lab File: VD058135.D
 Acq: 14 Jun 2018 14:58

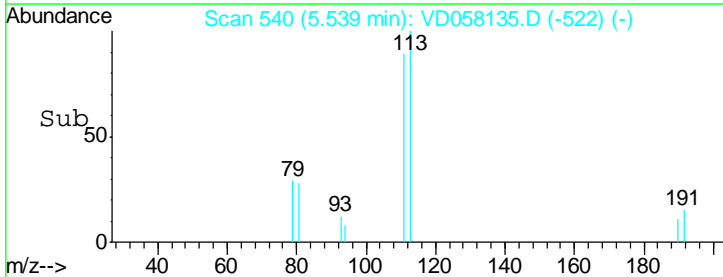
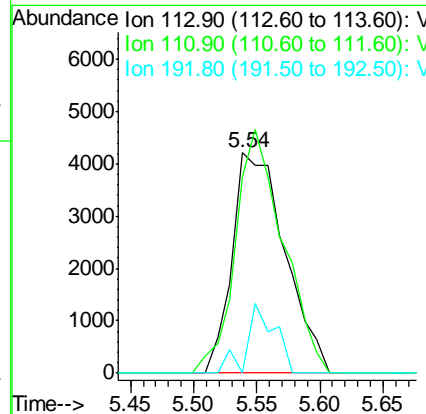
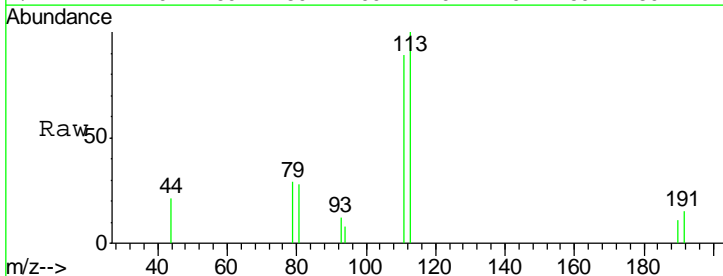
Instrument :
 MSVOA_D
 ClientSampled :

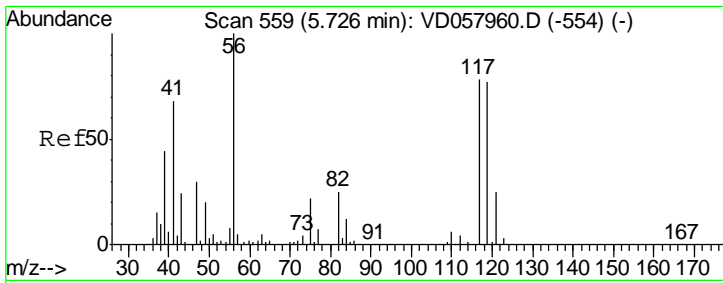
Tgt Ion	Resp	Lower	Upper
114	37820		
63	21.7	0.0	42.8
88	12.8	0.0	37.8



#35
 Dibromofluoromethane
 Concen: 50.000 ug/l
 RT: 5.54 min Scan# 540
 Delta R.T. -0.02 min
 Lab File: VD058135.D
 Acq: 14 Jun 2018 14:58

Tgt Ion	Resp	Lower	Upper
113	12236		
111	89.4	81.5	122.3
192	0.0	16.4	24.6#

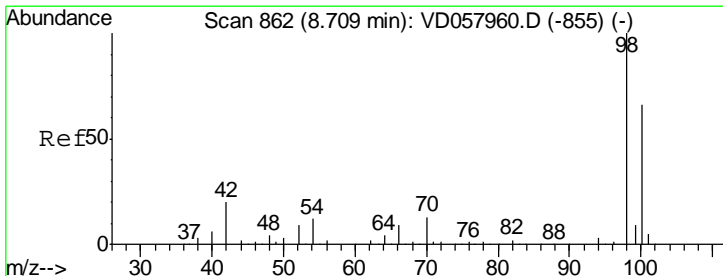
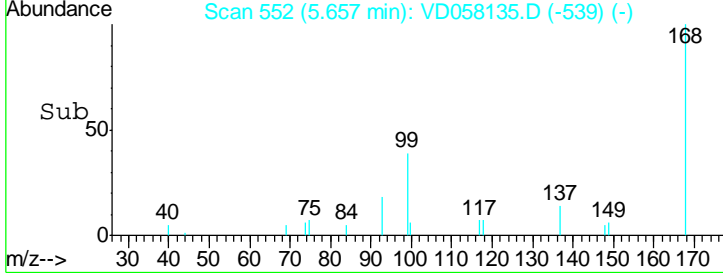
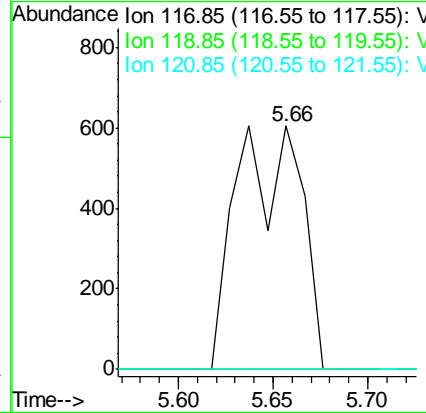
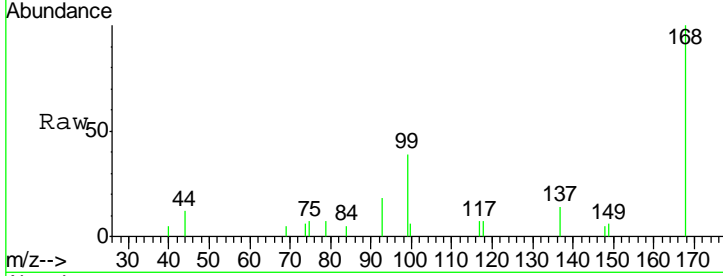




#38
 Carbon Tetrachloride
 Concen: 3.431 ug/l
 RT: 5.66 min Scan# 552
 Delta R.T. -0.07 min
 Lab File: VD058135.D
 Acq: 14 Jun 2018 14:58

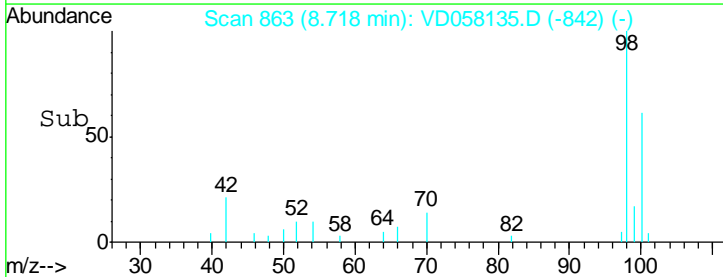
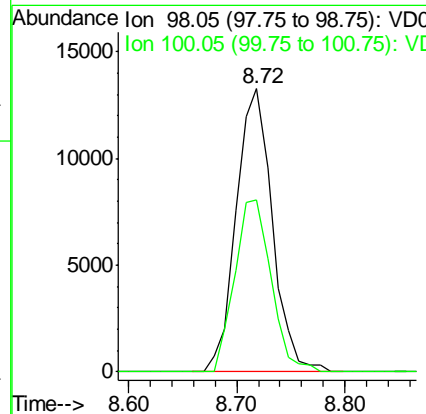
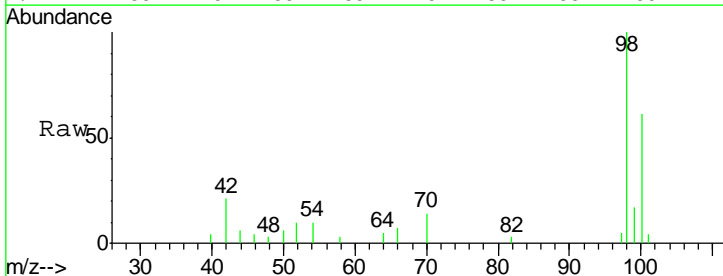
Instrument :
 MSVOA_D
ClientSampled :

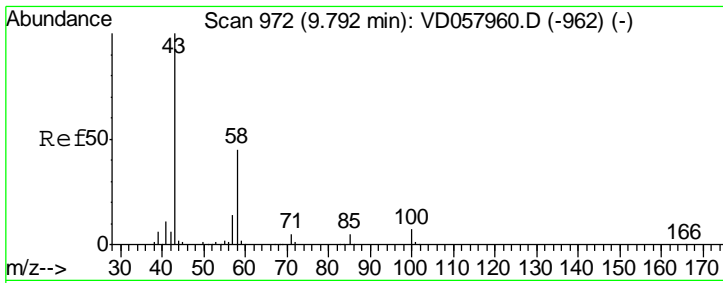
Tgt Ion	Resp	Lower	Upper
117	1409		
119	0.0	76.1	114.1#
121	0.0	24.9	37.3#



#50
 Toluene-d8
 Concen: N.D. ug/l
 RT: 8.72 min Scan# 863
 Delta R.T. 0.01 min
 Lab File: VD058135.D
 Acq: 14 Jun 2018 14:58

Tgt Ion	Resp	Lower	Upper
98	30722		
100	60.8	53.4	80.0

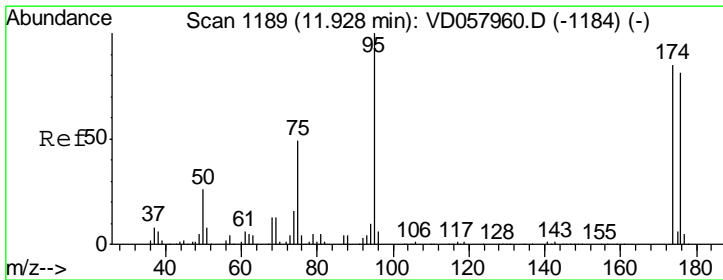
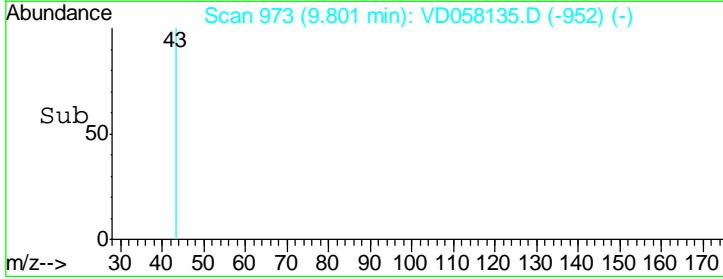
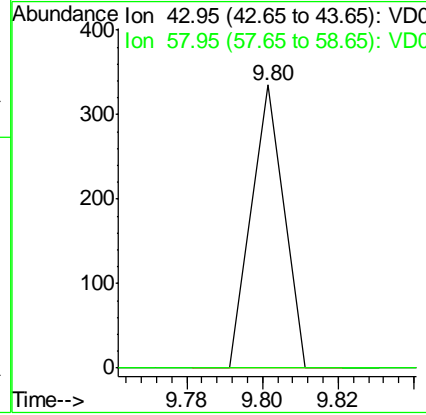
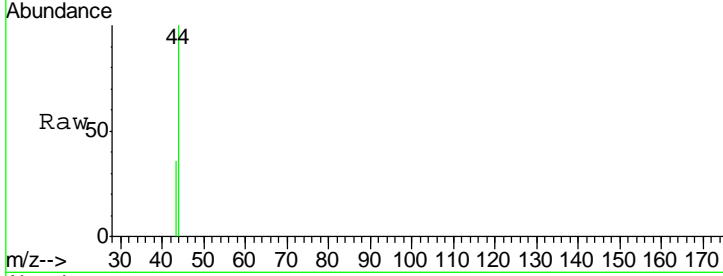




#59
 2-Hexanone
 Concen: 1.414 ug/l
 RT: 9.80 min Scan# 973
 Delta R.T. 0.01 min
 Lab File: VD058135.D
 Acq: 14 Jun 2018 14:58

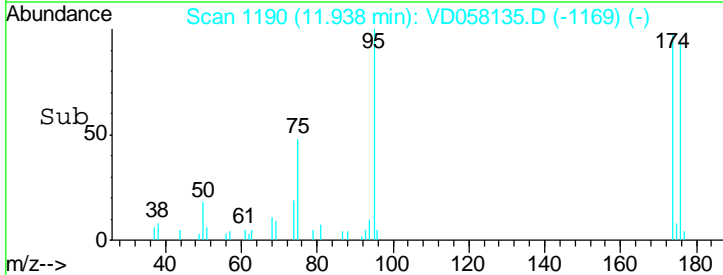
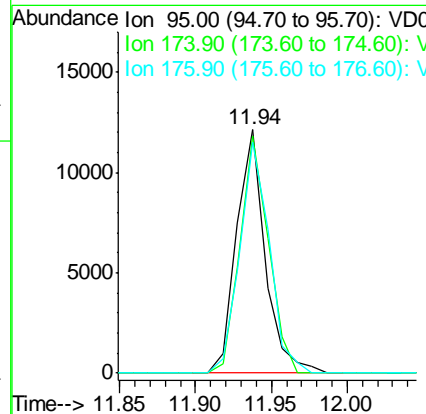
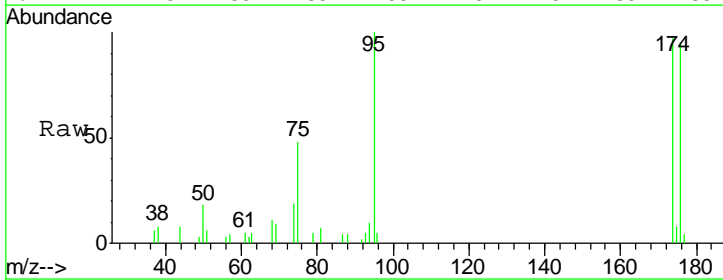
Instrument :
 MSVOA_D
 ClientSampled :

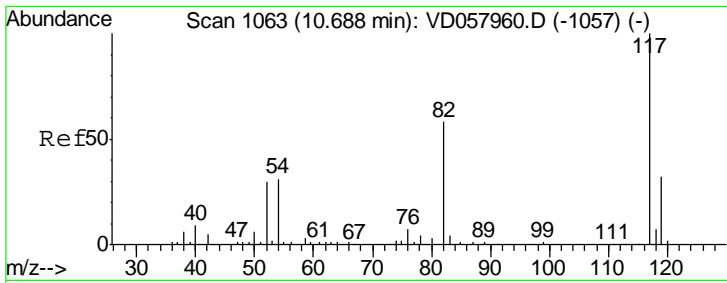
Tgt Ion: 43 Resp: 198
 Ion Ratio Lower Upper
 43 100
 58 0.0 22.5 67.5#



#62
 4-Bromofluorobenzene
 Concen: N.D. ug/l
 RT: 11.94 min Scan# 1190
 Delta R.T. 0.01 min
 Lab File: VD058135.D
 Acq: 14 Jun 2018 14:58

Tgt Ion: 95 Resp: 15927
 Ion Ratio Lower Upper
 95 100
 174 97.2 0.0 169.4
 176 94.9 0.0 162.6

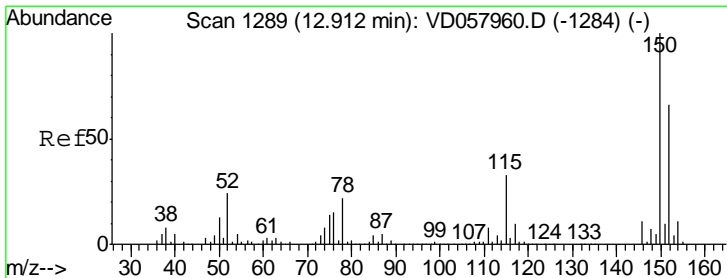
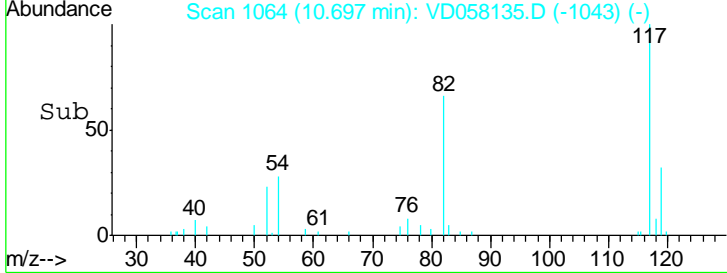
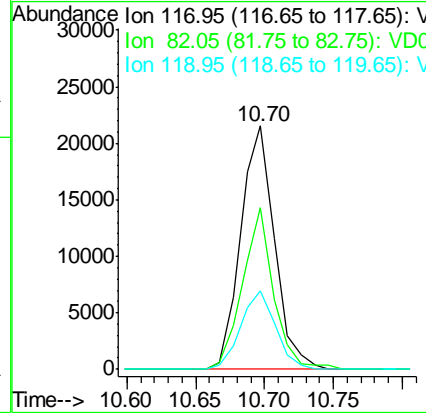
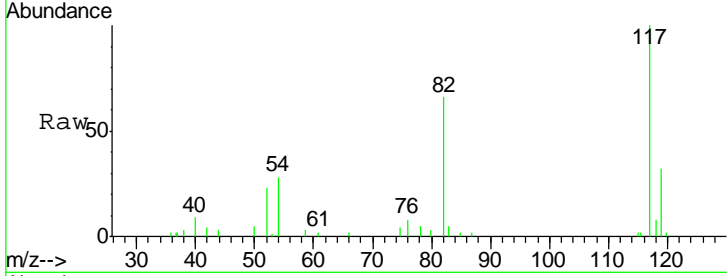




#63
 Chlorobenzene-d5
 Concen: 50.000 ug/l
 RT: 10.70 min Scan# 1064
 Delta R.T. 0.01 min
 Lab File: VD058135.D
 Acq: 14 Jun 2018 14:58

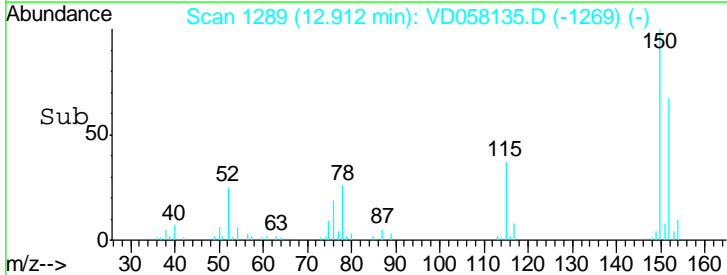
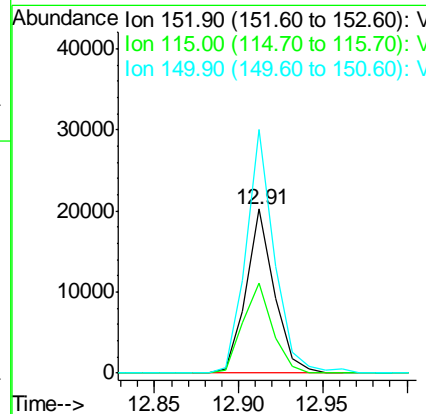
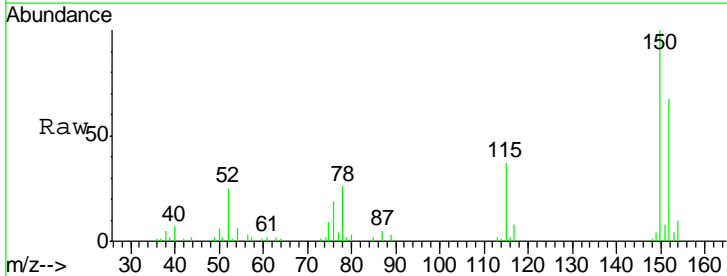
Instrument :
 MSVOA_D
 ClientSampled :

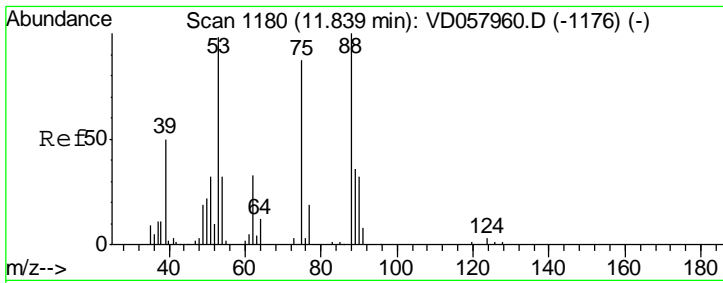
Tgt Ion	Resp	Lower	Upper
117	36775		
82	66.5	46.8	70.2
119	32.5	25.8	38.6



#72
 1,4-Dichlorobenzene-d4
 Concen: 50.000 ug/l
 RT: 12.91 min Scan# 1289
 Delta R.T. -0.00 min
 Lab File: VD058135.D
 Acq: 14 Jun 2018 14:58

Tgt Ion	Resp	Lower	Upper
152	23549		
115	55.3	25.6	76.6
150	148.7	0.0	306.8

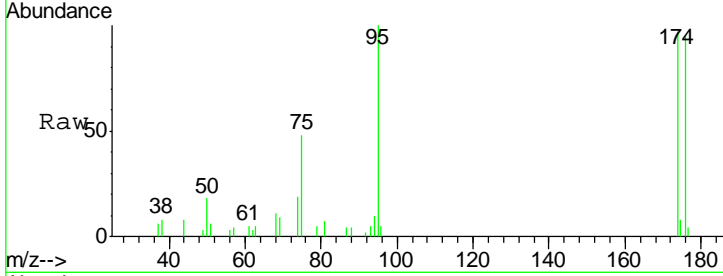




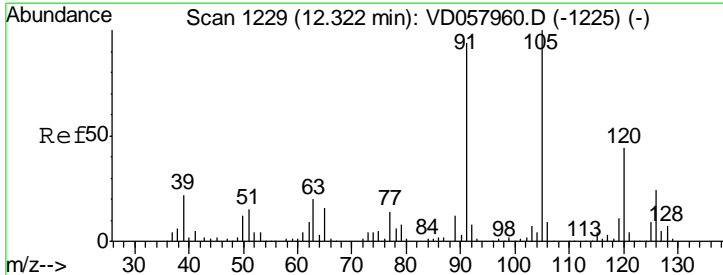
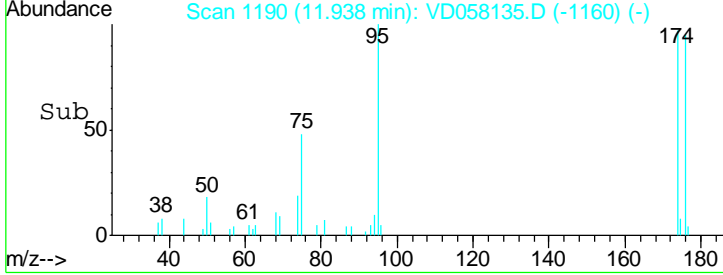
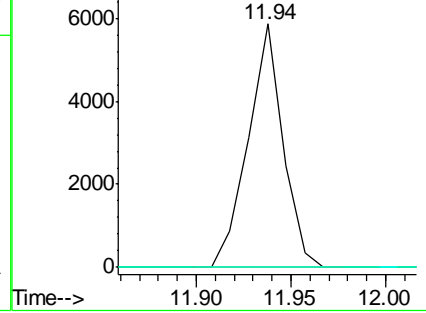
#81
 trans-1,4-Dichloro-2-butene
 Concen: 85.304 ug/l
 RT: 11.94 min Scan# 1190
 Delta R.T. 0.10 min
 Lab File: VD058135.D
 Acq: 14 Jun 2018 14:58

Instrument :
 MSVOA_D
 ClientSampled :

Tgt Ion	Resp	Lower	Upper
75	100		
53	0.0	89.3	133.9#
89	0.0	33.3	49.9#

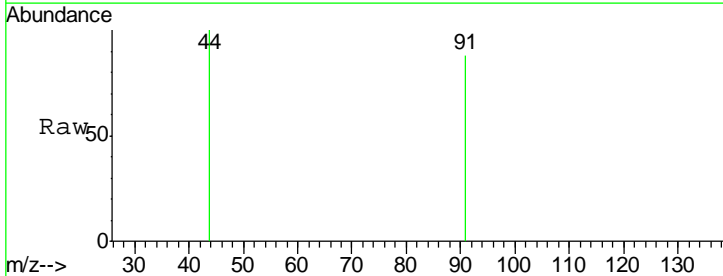


Abundance Ion 75.00 (74.70 to 75.70): VDC
 Ion 53.00 (52.70 to 53.70): VDC
 Ion 89.00 (88.70 to 89.70): VDC

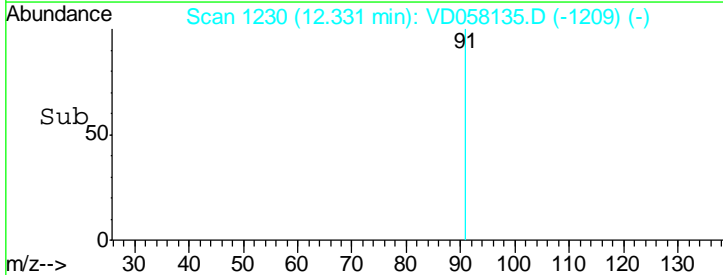
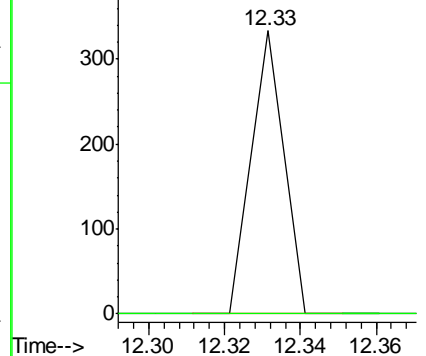


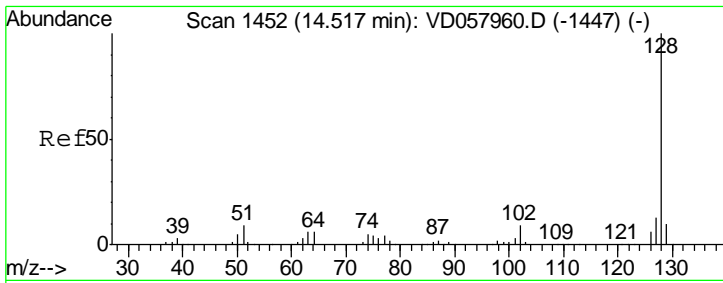
#82
 4-Chlorotoluene
 Concen: Below Cal
 RT: 12.33 min Scan# 1230
 Delta R.T. 0.01 min
 Lab File: VD058135.D
 Acq: 14 Jun 2018 14:58

Tgt Ion	Resp	Lower	Upper
91	100		
126	0.0	12.5	37.5#



Abundance Ion 91.00 (90.70 to 91.70): VDC
 Ion 125.95 (125.65 to 126.65): V





#95
 Naphthalene
 Concen: 1.382 ug/l
 RT: 14.53 min Scan# 1453
 Delta R.T. 0.01 min
 Lab File: VD058135.D
 Acq: 14 Jun 2018 14:58

Instrument : MSVOA_D
 ClientSampled :

Tot Ion: 128 Resp: 1051

Ion	Ratio	Lower	Upper
128	100		
127	0.0	10.2	15.2#
129	0.0	8.2	12.2#

