

Data Path : Z:\VOASRV\HPCHEM1\MSVOA D\DATA\VD061518\  
 Data File : VD058164.D  
 Acq On : 15 Jun 2018 20:53  
 Operator : VA/AP  
 Sample : J3500-01  
 Misc : 4.27g/5ml/MSVOA D/SOIL  
 ALS Vial : 13 Sample Multiplier: 1

Instrument :  
 MSVOA\_D  
 ClientSampleId :

Quant Time: Jun 15 23:19:35 2018  
 Quant Method : Z:\VOASRV\HPCHEM1\MSVOA\_D\METHOD\82D060618S.M  
 Quant Title : SW846 8260  
 QLast Update : Thu Jun 07 08:57:33 2018  
 Response via : Initial Calibration

Internal Standards	R.T.	QIon	Response	Conc	Units	Dev(Min)
1) Pentafluorobenzene	5.63	168	101001	50.00	ug/l	-0.01
34) 1,4-Difluorobenzene	6.69	114	142402	50.00	ug/l	-0.01
63) Chlorobenzene-d5	10.68	117	44076	50.00	ug/l	0.00
72) 1,4-Dichlorobenzene-d4	12.91	152	4380	50.00	ug/l	0.00

## System Monitoring Compounds

33) 1,2-Dichloroethane-d4	6.02	65	136064	134.75	ug/l	0.00
Spiked Amount	50.000		Recovery	=	269.50%	
35) Dibromofluoromethane	5.54	113	123536	112.12	ug/l	-0.02
Spiked Amount	50.000		Recovery	=	224.24%	
50) Toluene-d8	8.70	98	121416	46.35	ug/l	0.00
Spiked Amount	50.000		Recovery	=	92.70%	
62) 4-Bromofluorobenzene	11.92	95	12406	10.86	ug/l	0.00
Spiked Amount	50.000		Recovery	=	21.72%	

## Target Compounds

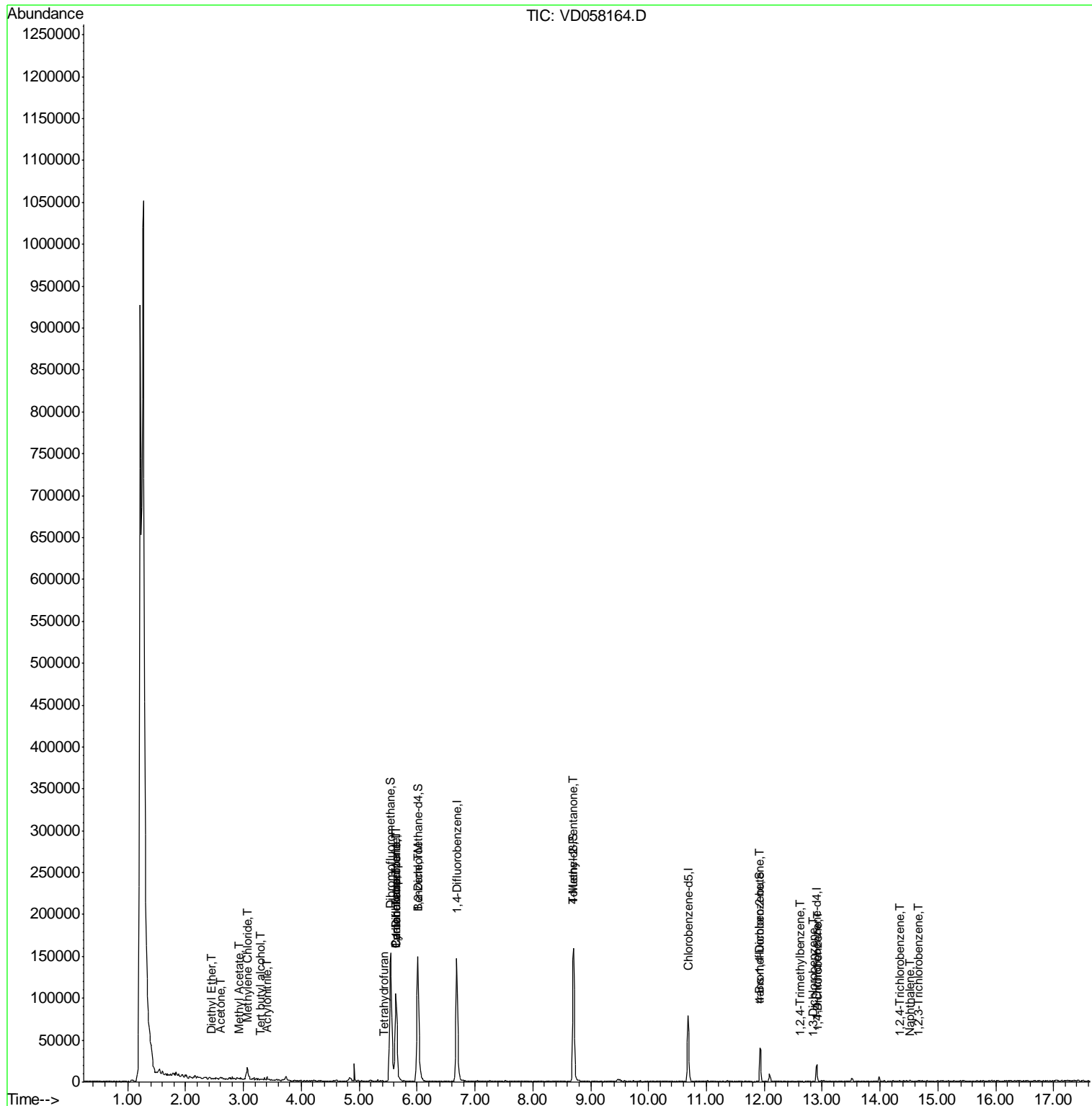
						Qvalue
8) Diethyl Ether	2.44	74	180	1.097	ug/l #	1
11) Tert butyl alcohol	3.28	59	259	9.575	ug/l #	74
15) Acrylonitrile	3.40	53	193	1.220	ug/l #	15
16) Acetone	2.60	43	2562	17.611	ug/l #	57
18) Methyl Acetate	2.93	43	687	2.441	ug/l #	66
20) Methylene Chloride	3.06	84	6289	12.249	ug/l	86
29) Tetrahydrofuran	5.42	42	187	1.079	ug/l #	39
31) Cyclohexane	5.63	56	2022	1.152	ug/l #	1
36) 1,1-Dichloropropene	5.63	75	8306	5.294	ug/l #	45
38) Carbon Tetrachloride	5.64	117	7895	5.106	ug/l #	12
40) Benzene	6.01	78	17014	4.642	ug/l	91
51) 4-Methyl-2-Pentanone	8.70	43	944	1.313	ug/l #	1
81) trans-1,4-Dichloro-2-buten	11.92	75	6338	388.926	ug/l #	6
82) 4-Chlorotoluene	12.33	91	197	Below Cal	#	50
84) 1,2,4-Trimethylbenzene	12.62	105	308	1.266	ug/l #	33
87) 1,3-Dichlorobenzene	12.84	146	191	1.315	ug/l #	25
88) 1,4-Dichlorobenzene	12.93	146	279	1.971	ug/l #	25
93) 1,2,4-Trichlorobenzene	14.34	180	223	2.033	ug/l #	11
95) Naphthalene	14.51	128	1156	8.175	ug/l #	70
96) 1,2,3-Trichlorobenzene	14.66	180	178	1.904	ug/l #	82

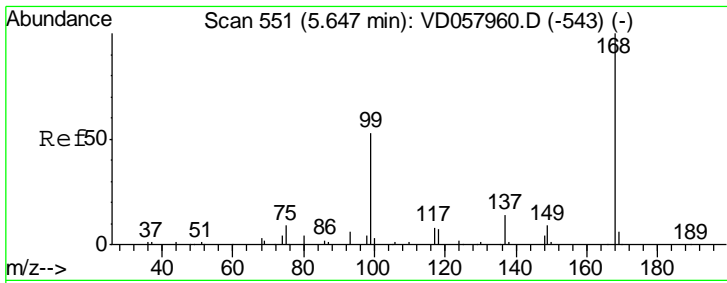
(#) = qualifier out of range (m) = manual integration (+) = signals summed

Data Path : Z:\VOASRV\HPCHEM1\MSVOA D\DATA\VD061518\  
 Data File : VD058164.D  
 Acq On : 15 Jun 2018 20:53  
 Operator : VA/AP  
 Sample : J3500-01  
 Misc : 4.27µl/5ml/MSVOA D/SOIL  
 ALS Vial : 13 Sample Multiplier: 1

Instrument :  
 MSVOA\_D  
 ClientSampleId :

Quant Time: Jun 15 23:19:35 2018  
 Quant Method : Z:\VOASRV\HPCHEM1\MSVOA\_D\METHOD\82D060618S.M  
 Quant Title : SW846 8260  
 QLast Update : Thu Jun 07 08:57:33 2018  
 Response via : Initial Calibration

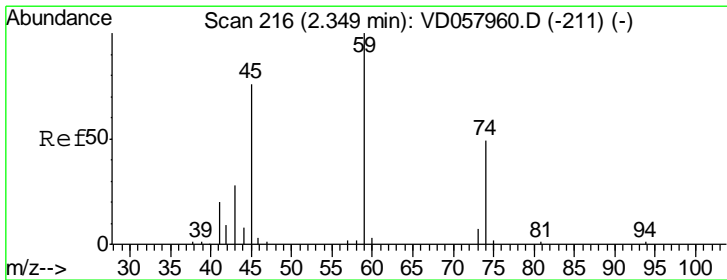
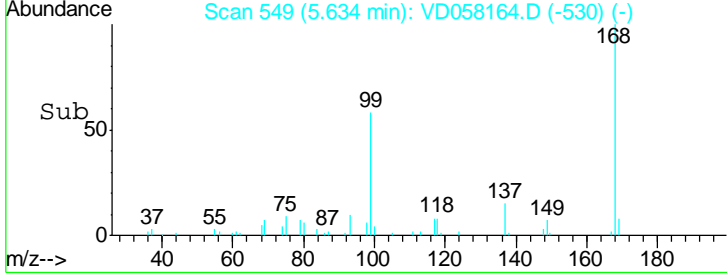
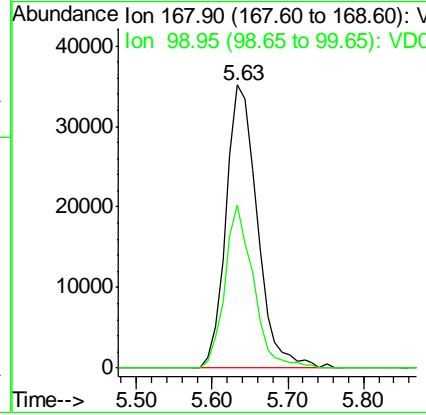
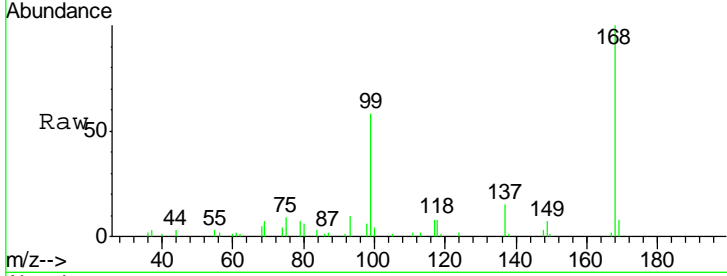




#1  
 Pentafluorobenzene  
 Concen: 50.000 ug/l  
 RT: 5.63 min Scan# 549  
 Delta R.T. -0.01 min  
 Lab File: VD058164.D  
 Acq: 15 Jun 2018 20:53

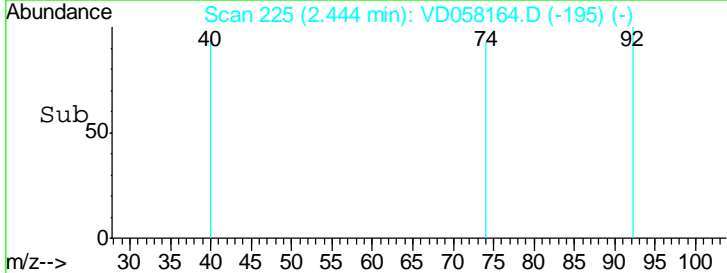
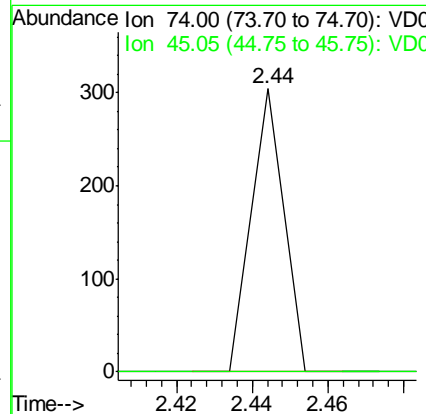
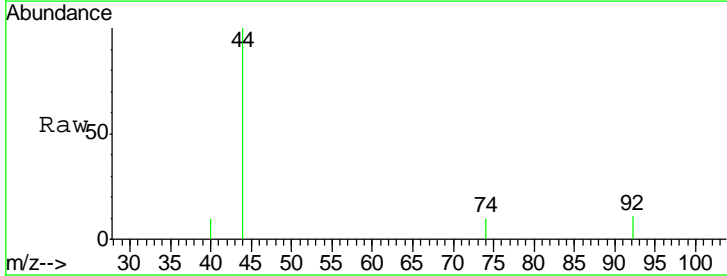
Instrument : MSVOA\_D  
 ClientSampleID :

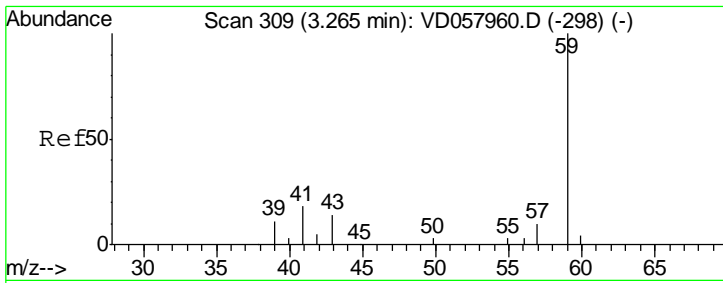
Tgt Ion	Resp	Lower	Upper
168	101001		
99	57.7	46.8	70.2



#8  
 Diethyl Ether  
 Concen: 1.097 ug/l  
 RT: 2.44 min Scan# 225  
 Delta R.T. 0.09 min  
 Lab File: VD058164.D  
 Acq: 15 Jun 2018 20:53

Tgt Ion	Resp	Lower	Upper
74	180		
45	0.0	77.1	231.3#

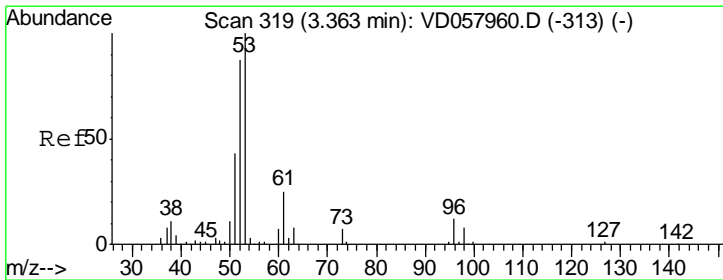
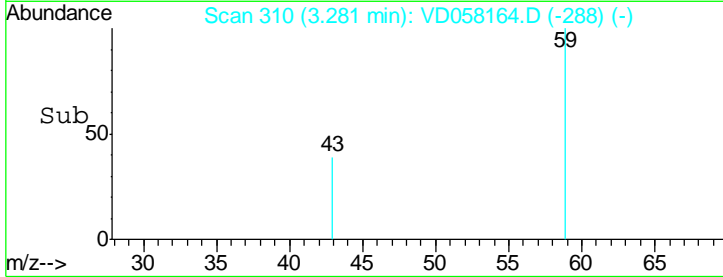
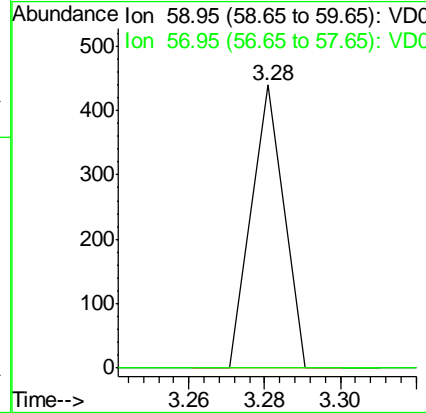
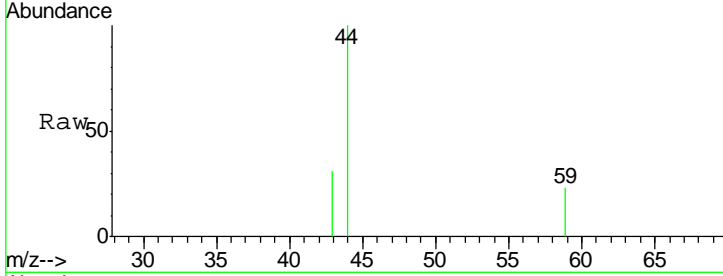




#11  
 Tert butyl alcohol  
 Concen: 9.575 ug/l  
 RT: 3.28 min Scan# 310  
 Delta R.T. 0.02 min  
 Lab File: VD058164.D  
 Acq: 15 Jun 2018 20:53

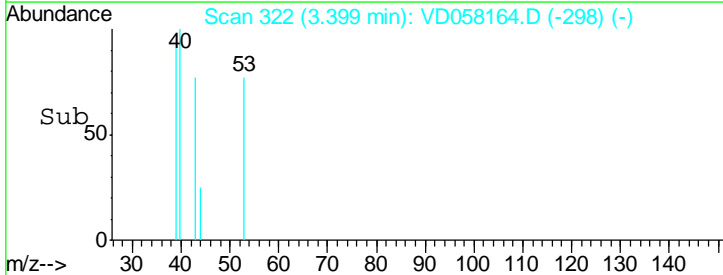
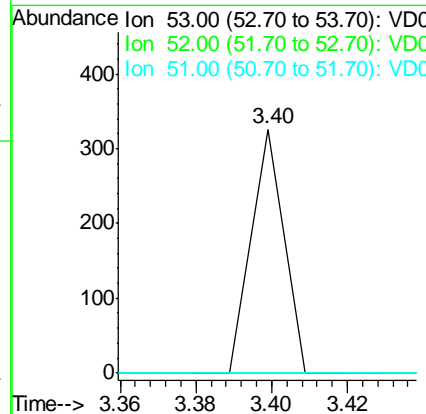
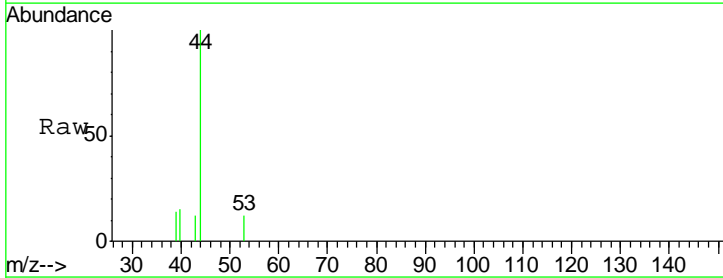
Instrument :  
 MSVOA\_D  
 ClientSampled :

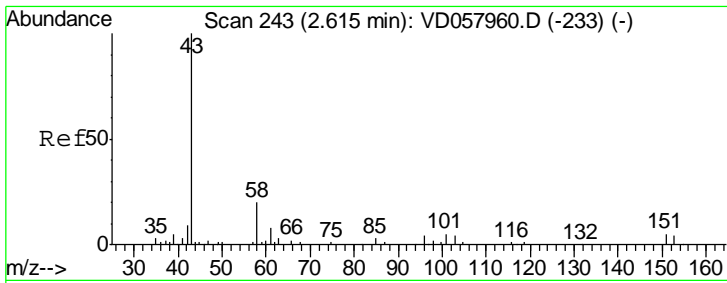
Tgt Ion	Resp	Lower	Upper
59	100		
57	0.0	7.8	11.6#



#15  
 Acrylonitrile  
 Concen: 1.220 ug/l  
 RT: 3.40 min Scan# 322  
 Delta R.T. 0.04 min  
 Lab File: VD058164.D  
 Acq: 15 Jun 2018 20:53

Tgt Ion	Resp	Lower	Upper
53	100		
52	0.0	69.9	104.9#
51	0.0	34.3	51.5#

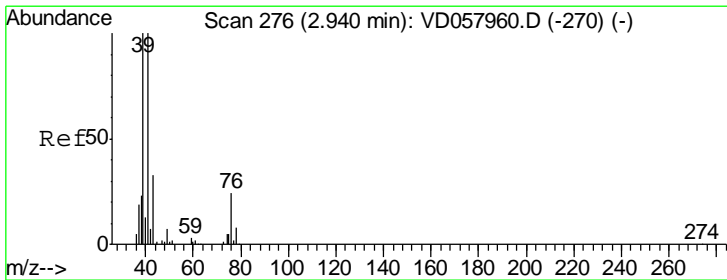
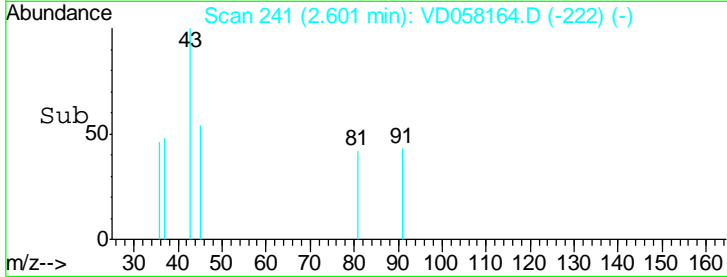
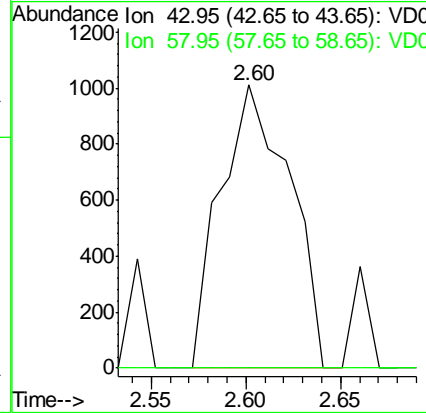
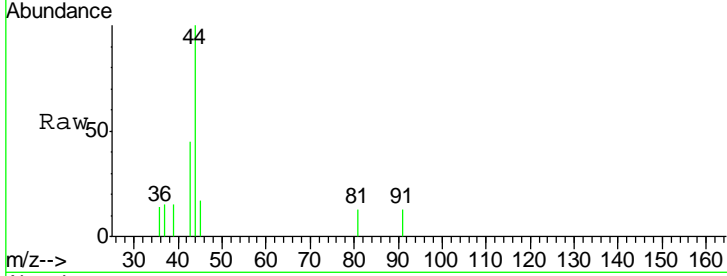




#16  
 Acetone  
 Concen: 17.611 ug/l  
 RT: 2.60 min Scan# 241  
 Delta R.T. -0.01 min  
 Lab File: VD058164.D  
 Acq: 15 Jun 2018 20:53

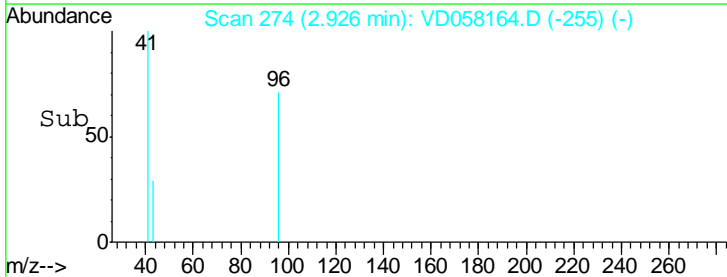
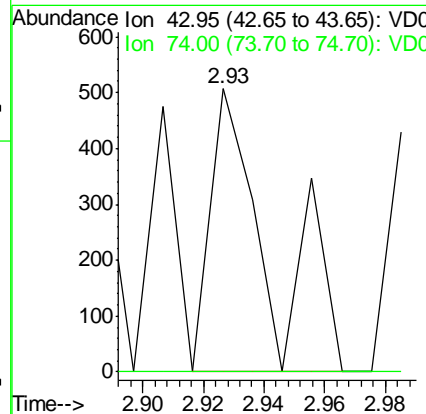
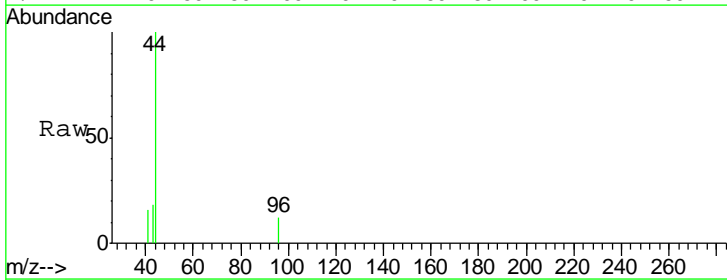
Instrument :  
 MSVOA\_D  
 ClientSampled :

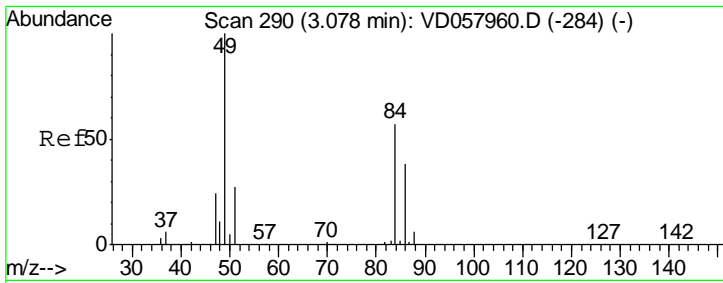
Tgt Ion: 43 Resp: 2562  
 Ion Ratio Lower Upper  
 43 100  
 58 0.0 15.8 23.8#



#18  
 Methyl Acetate  
 Concen: 2.441 ug/l  
 RT: 2.93 min Scan# 274  
 Delta R.T. -0.01 min  
 Lab File: VD058164.D  
 Acq: 15 Jun 2018 20:53

Tgt Ion: 43 Resp: 687  
 Ion Ratio Lower Upper  
 43 100  
 74 0.0 11.2 16.8#

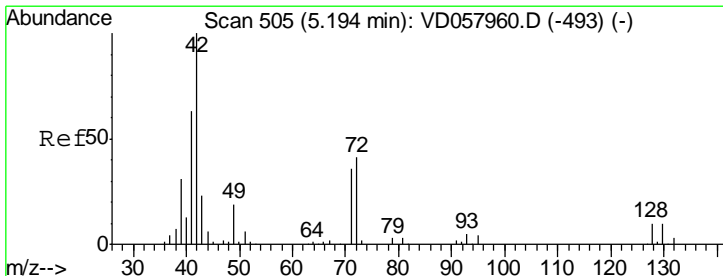
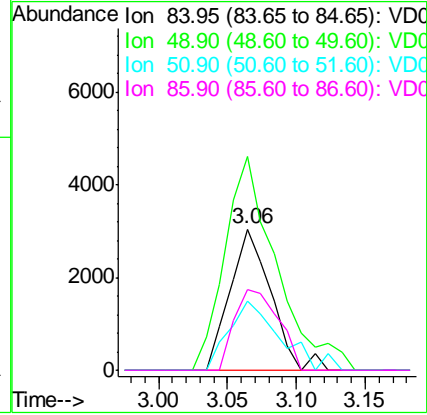
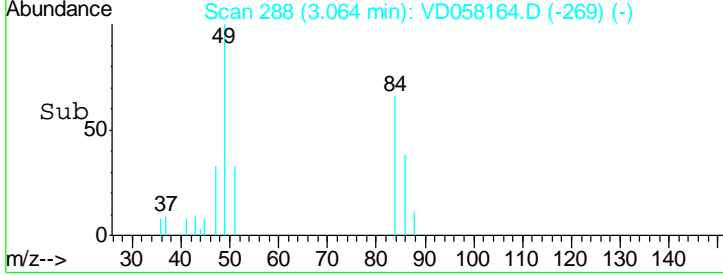
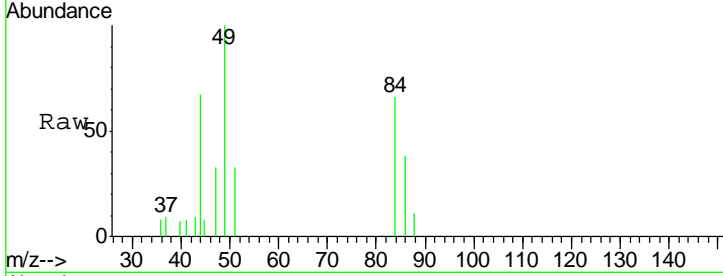




#20  
 Methylene Chloride  
 Concen: 12.249 ug/l  
 RT: 3.06 min Scan# 288  
 Delta R.T. -0.01 min  
 Lab File: VD058164.D  
 Acq: 15 Jun 2018 20:53

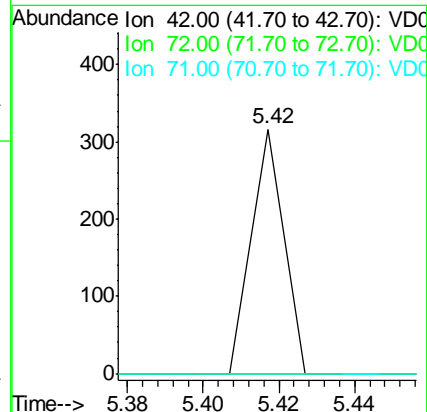
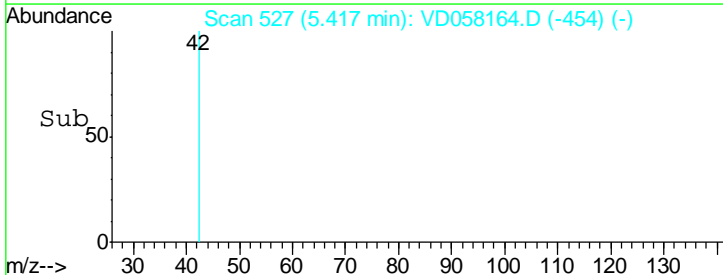
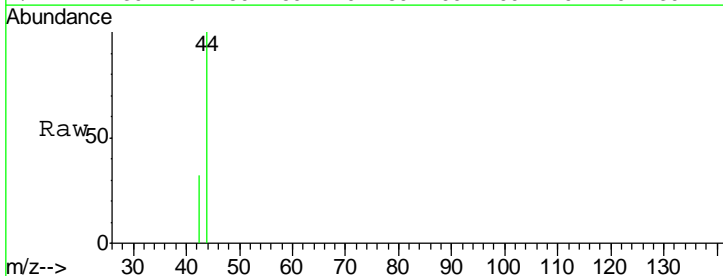
Instrument :  
 MSVOA\_D  
 ClientSampled :

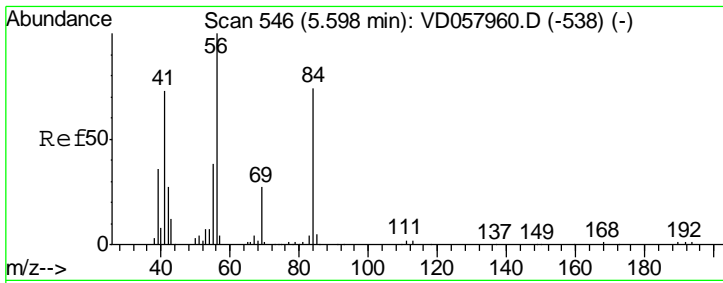
Tgt Ion	Resp	Lower	Upper
84	100		
49	151.0	141.4	212.0
51	49.3	38.3	57.5
86	56.7	52.9	79.3



#29  
 Tetrahydrofuran  
 Concen: 1.079 ug/l  
 RT: 5.42 min Scan# 527  
 Delta R.T. 0.22 min  
 Lab File: VD058164.D  
 Acq: 15 Jun 2018 20:53

Tgt Ion	Resp	Lower	Upper
42	100		
72	0.0	28.5	42.7#
71	0.0	27.9	41.9#

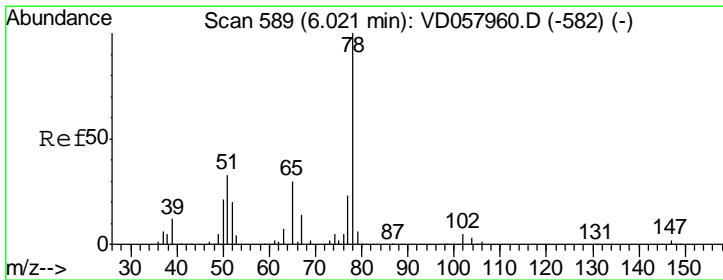
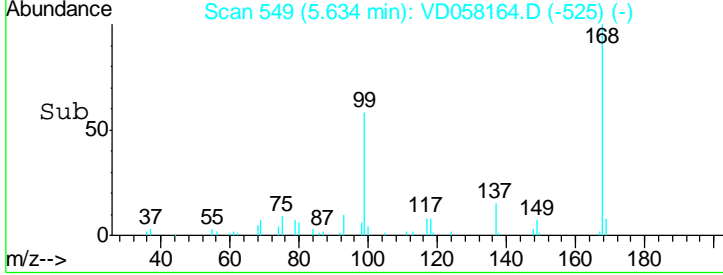
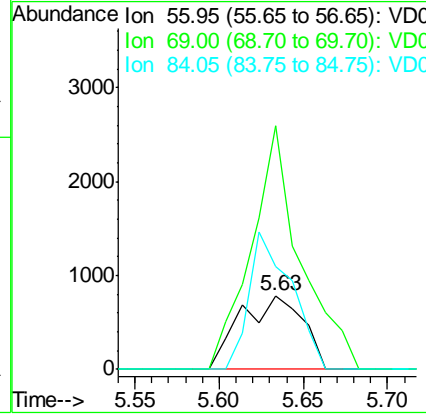
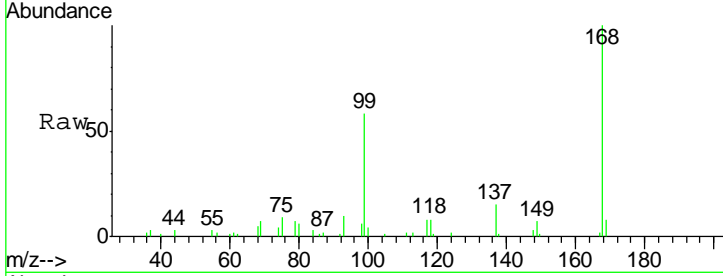




#31  
 Cyclohexane  
 Concen: 1.152 ug/l  
 RT: 5.63 min Scan# 549  
 Delta R.T. 0.04 min  
 Lab File: VD058164.D  
 Acq: 15 Jun 2018 20:53

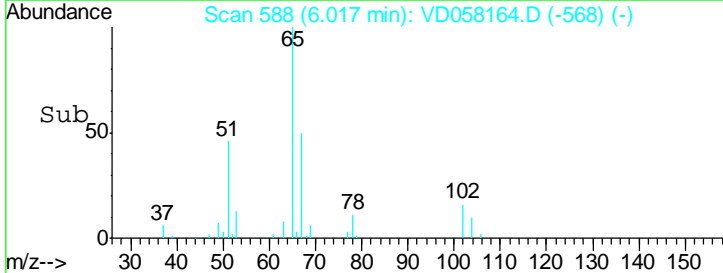
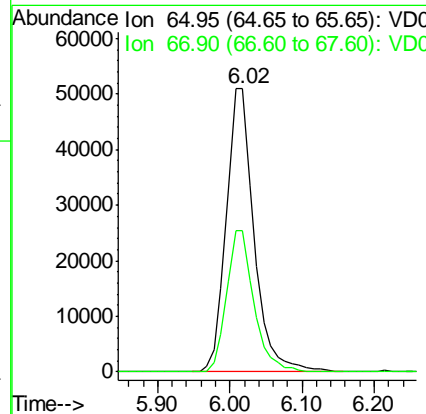
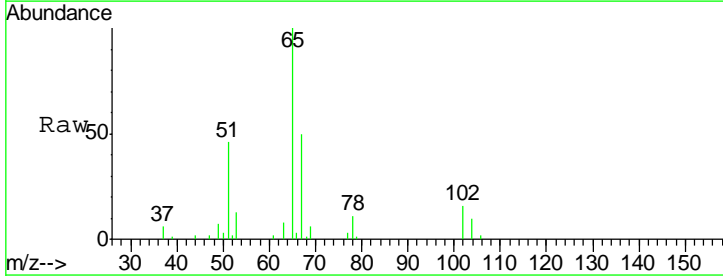
Instrument :  
 MSVOA\_D  
 ClientSampled :

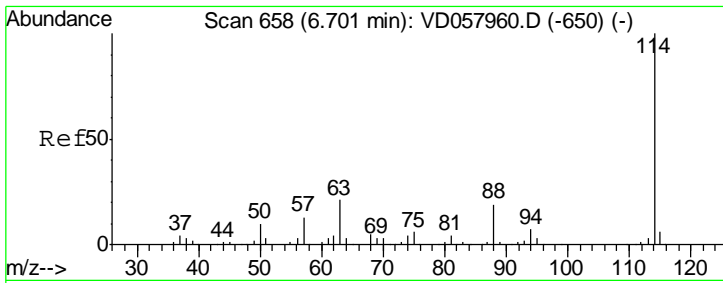
Tgt Ion	Resp	Lower	Upper
56	100		
69	330.9	21.5	32.3#
84	140.6	61.0	91.6#



#33  
 1,2-Dichloroethane-d4  
 Concen: N.D. ug/l  
 RT: 6.02 min Scan# 588  
 Delta R.T. -0.00 min  
 Lab File: VD058164.D  
 Acq: 15 Jun 2018 20:53

Tgt Ion	Resp	Lower	Upper
65	100		
67	50.0	0.0	94.0

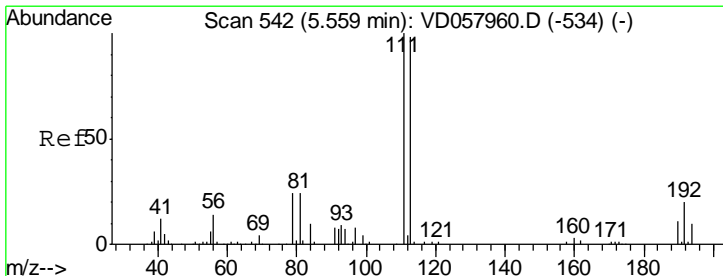
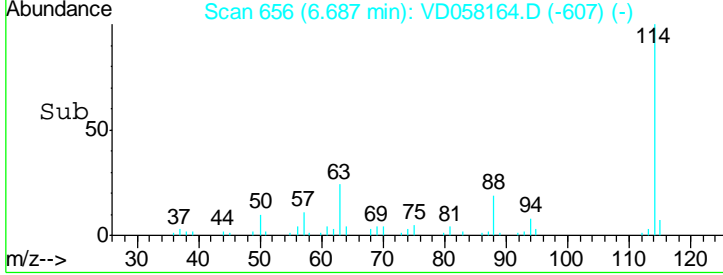
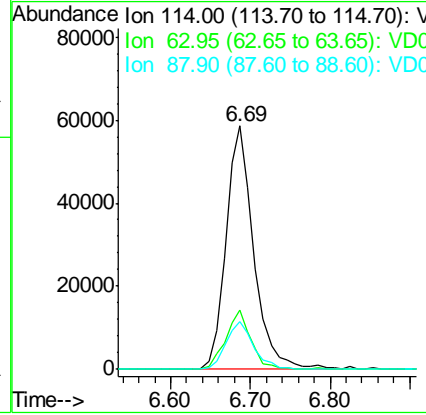
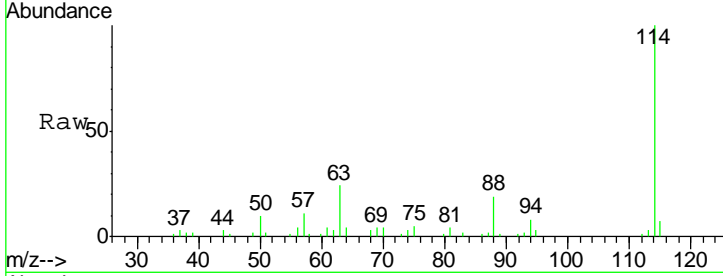




#34  
 1,4-Difluorobenzene  
 Concen: 50.000 ug/l  
 RT: 6.69 min Scan# 656  
 Delta R.T. -0.01 min  
 Lab File: VD058164.D  
 Acq: 15 Jun 2018 20:53

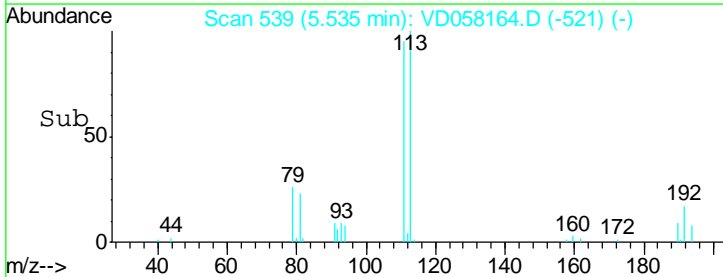
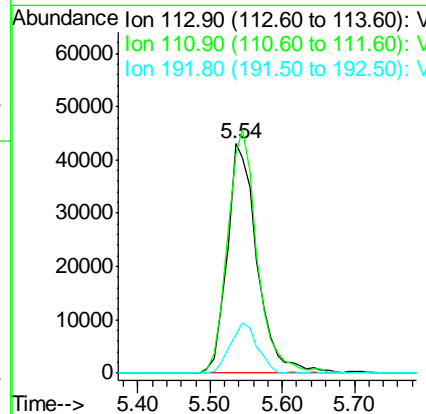
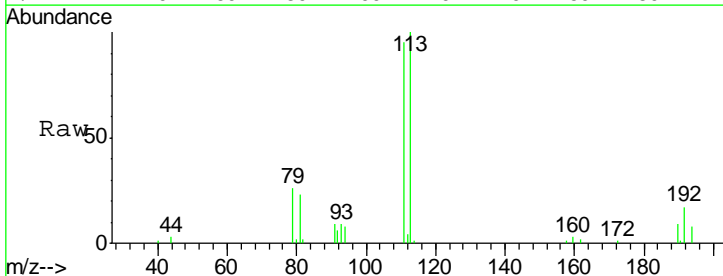
Instrument :  
 MSVOA\_D  
 ClientSampled :

Tgt Ion	Resp	Lower	Upper
114	142402		
63	24.3	0.0	42.8
88	19.5	0.0	37.8

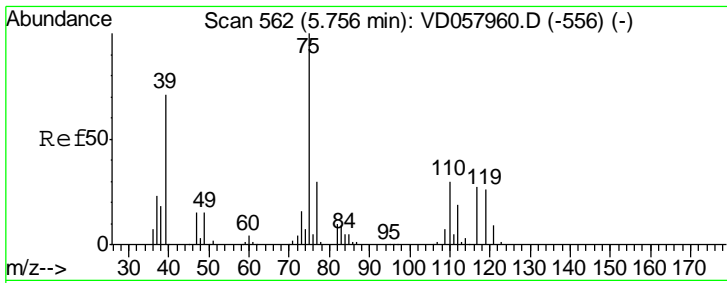


#35  
 Dibromofluoromethane  
 Concen: 50.000 ug/l  
 RT: 5.54 min Scan# 539  
 Delta R.T. -0.02 min  
 Lab File: VD058164.D  
 Acq: 15 Jun 2018 20:53

Tgt Ion	Resp	Lower	Upper
113	123536		
111	95.4	81.5	122.3
192	17.0	16.4	24.6



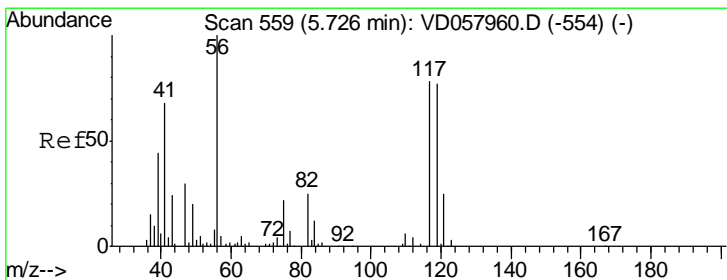
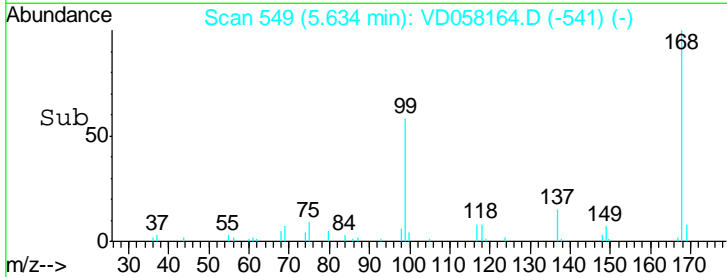
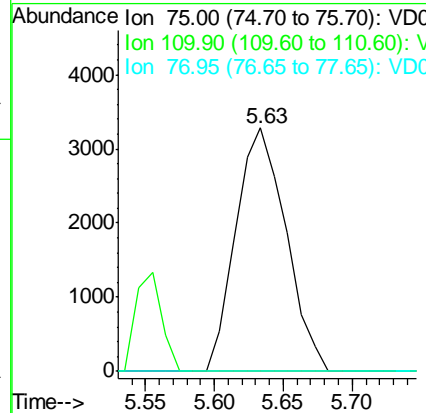
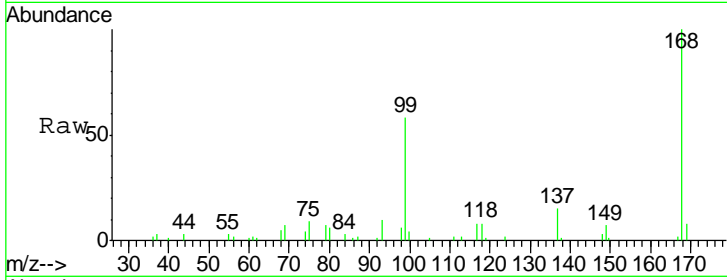




#36  
 1,1-Dichloropropene  
 Concen: 5.294 ug/l  
 RT: 5.63 min Scan# 549  
 Delta R.T. -0.12 min  
 Lab File: VD058164.D  
 Acq: 15 Jun 2018 20:53

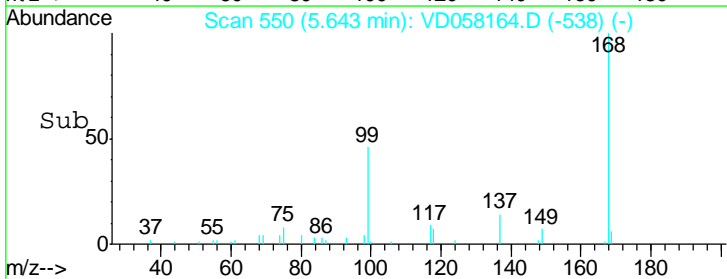
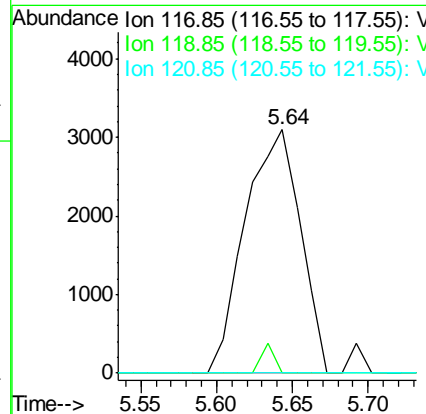
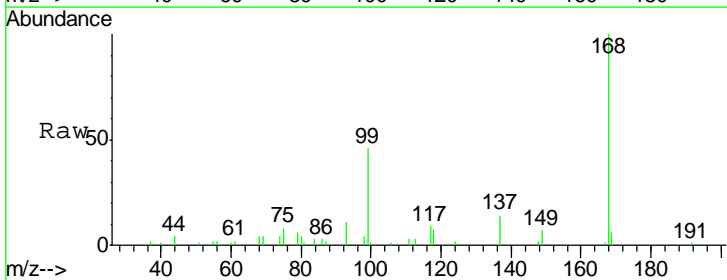
Instrument :  
 MSVOA\_D  
 ClientSampled :

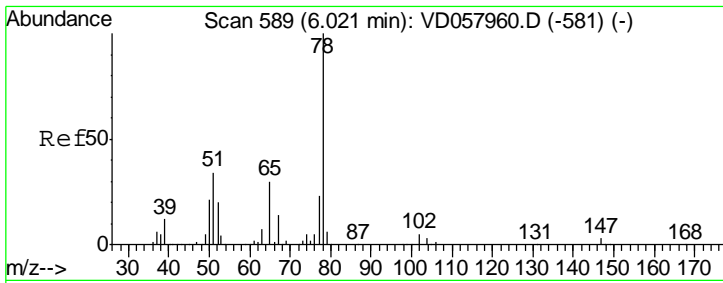
Tgt Ion	Resp	Lower	Upper
75	100		
110	0.0	14.8	44.3#
77	0.0	23.9	35.9#



#38  
 Carbon Tetrachloride  
 Concen: 5.106 ug/l  
 RT: 5.64 min Scan# 550  
 Delta R.T. -0.08 min  
 Lab File: VD058164.D  
 Acq: 15 Jun 2018 20:53

Tgt Ion	Resp	Lower	Upper
117	100		
119	0.0	76.1	114.1#
121	0.0	24.9	37.3#

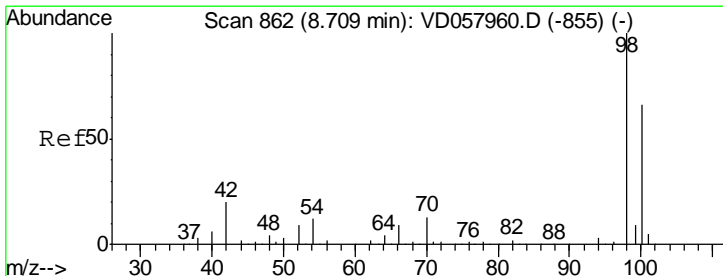
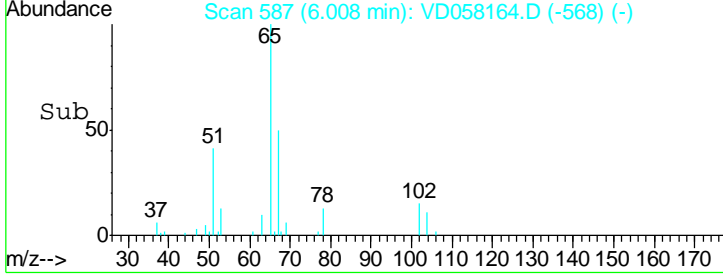
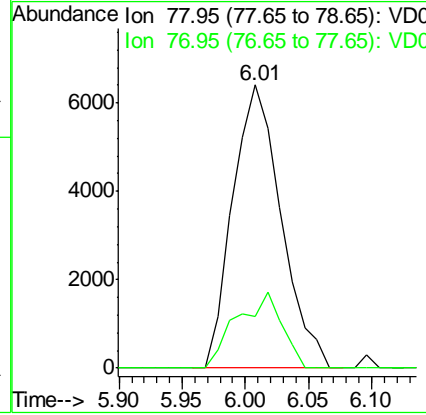
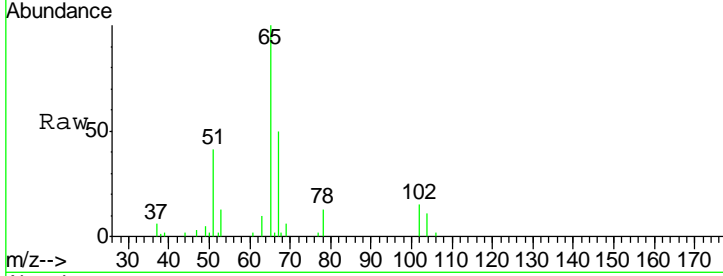




#40  
Benzene  
Concen: 4.642 ug/l  
RT: 6.01 min Scan# 587  
Delta R.T. -0.01 min  
Lab File: VD058164.D  
Acq: 15 Jun 2018 20:53

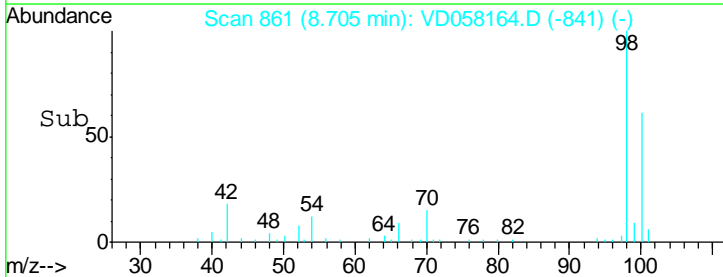
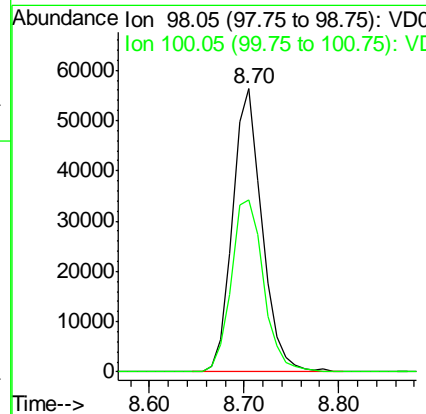
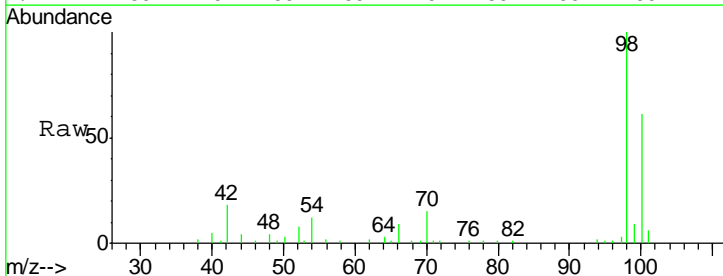
Instrument : MSVOA\_D  
ClientSampled :

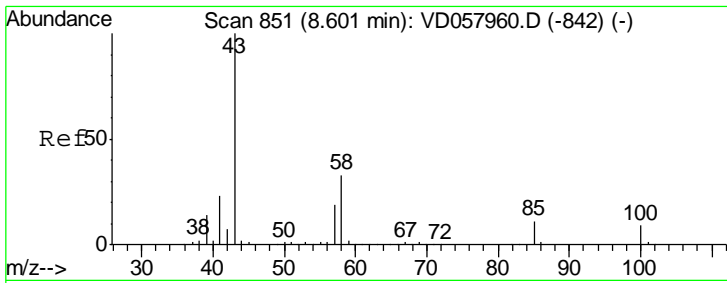
Tgt Ion	Resp	Lower	Upper
78	17014		
77	18.5	18.1	27.1



#50  
Toluene-d8  
Concen: N.D. ug/l  
RT: 8.70 min Scan# 861  
Delta R.T. -0.00 min  
Lab File: VD058164.D  
Acq: 15 Jun 2018 20:53

Tgt Ion	Resp	Lower	Upper
98	121416		
100	60.7	53.4	80.0

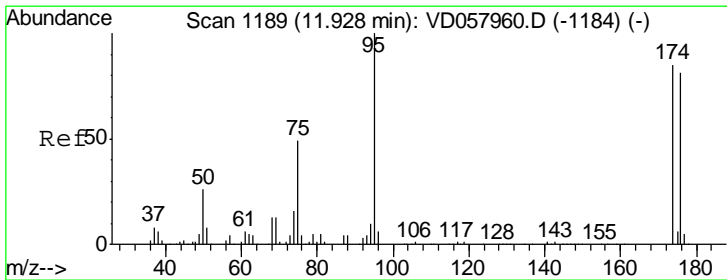
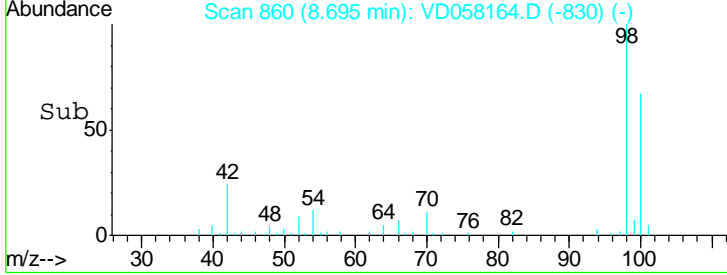
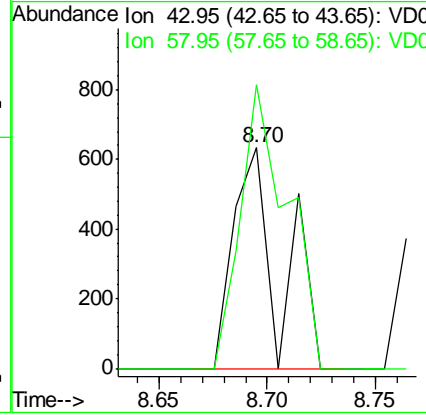
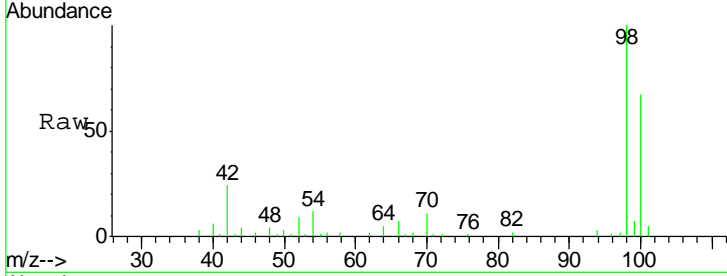




#51  
 4-Methyl-2-Pentanone  
 Concen: 1.313 ug/l  
 RT: 8.70 min Scan# 860  
 Delta R.T. 0.09 min  
 Lab File: VD058164.D  
 Acq: 15 Jun 2018 20:53

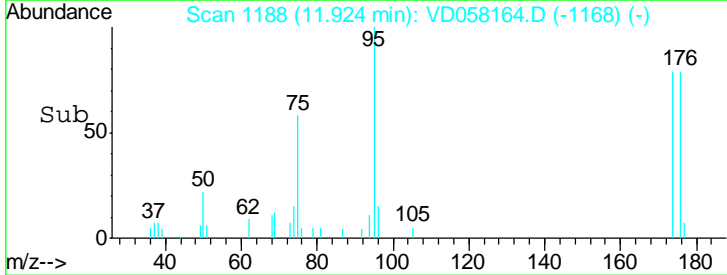
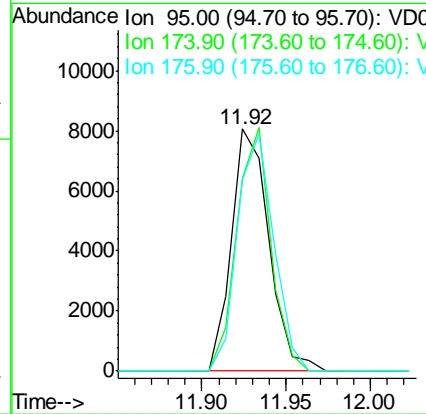
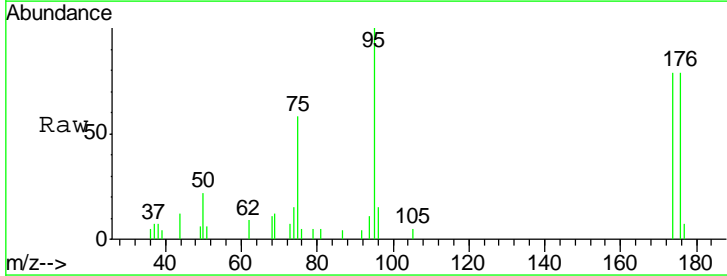
Instrument :  
 MSVOA\_D  
 ClientSampled :

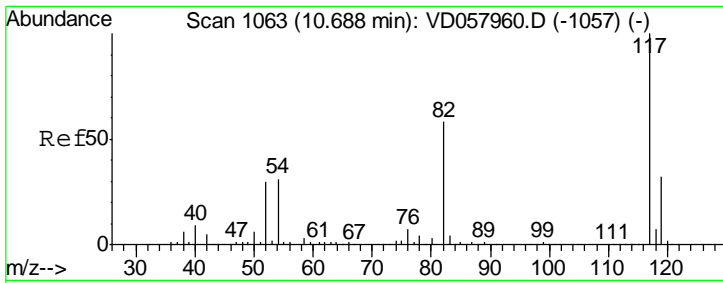
Tgt Ion	Resp	Lower	Upper
43	100		
58	128.2	26.2	39.4#



#62  
 4-Bromofluorobenzene  
 Concen: N.D. ug/l  
 RT: 11.92 min Scan# 1188  
 Delta R.T. -0.00 min  
 Lab File: VD058164.D  
 Acq: 15 Jun 2018 20:53

Tgt Ion	Resp	Lower	Upper
95	100		
174	79.5	0.0	169.4
176	79.1	0.0	162.6

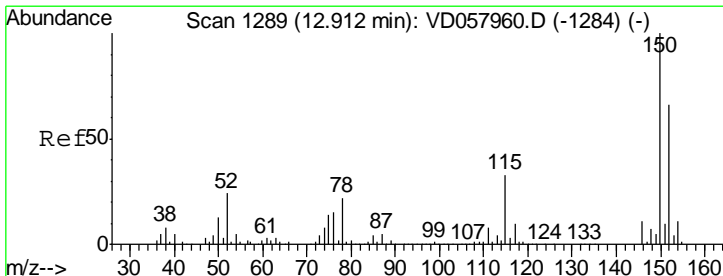
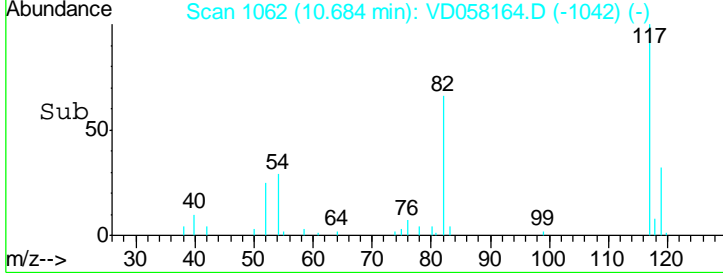
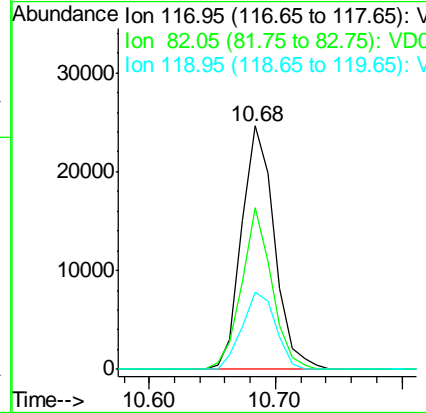
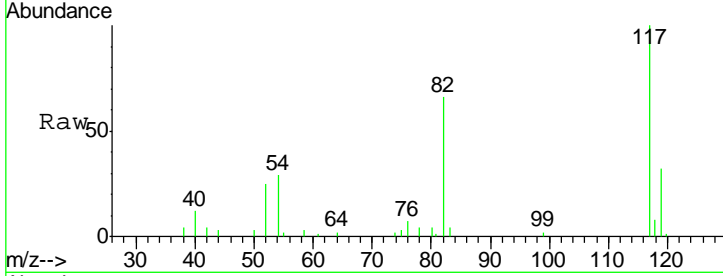




#63  
 Chlorobenzene-d5  
 Concen: 50.000 ug/l  
 RT: 10.68 min Scan# 1062  
 Delta R.T. -0.00 min  
 Lab File: VD058164.D  
 Acq: 15 Jun 2018 20:53

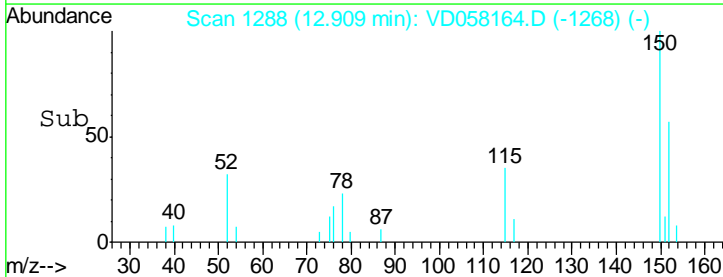
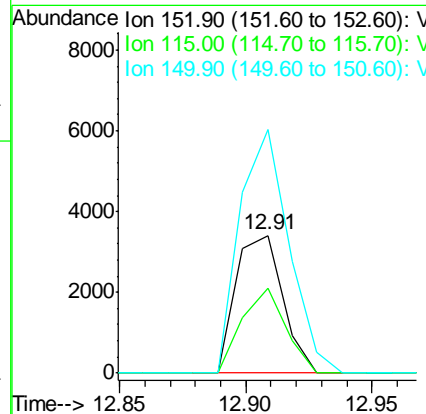
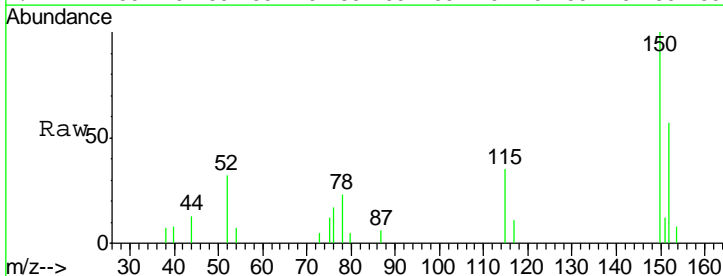
Instrument : MSVOA\_D  
 ClientSampled :

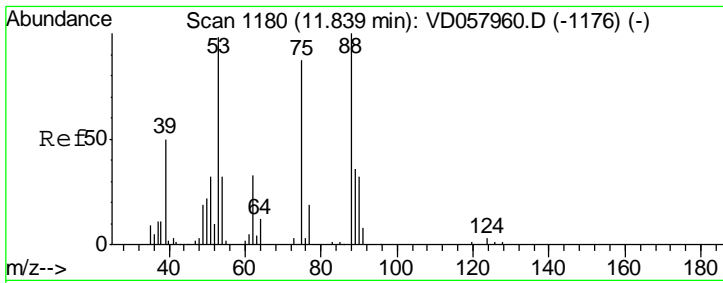
Tgt Ion	Resp	Lower	Upper
117	44076		
82	66.3	46.8	70.2
119	31.6	25.8	38.6



#72  
 1,4-Dichlorobenzene-d4  
 Concen: 50.000 ug/l  
 RT: 12.91 min Scan# 1288  
 Delta R.T. -0.00 min  
 Lab File: VD058164.D  
 Acq: 15 Jun 2018 20:53

Tgt Ion	Resp	Lower	Upper
152	4380		
115	61.2	25.6	76.6
150	176.9	0.0	306.8

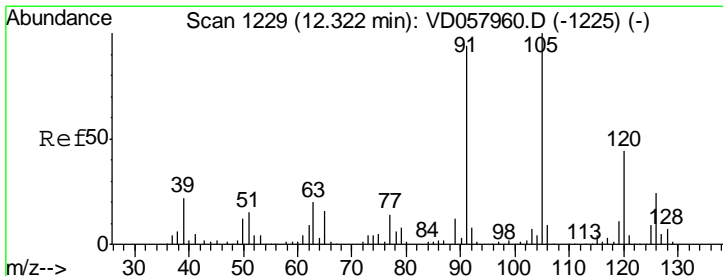
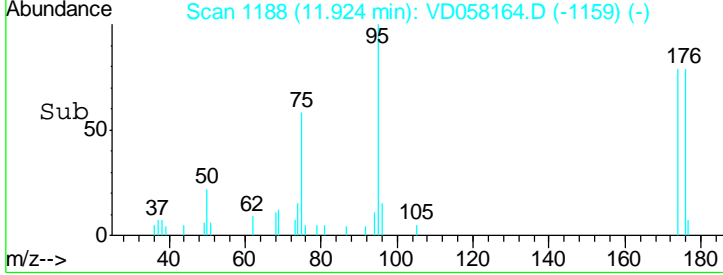
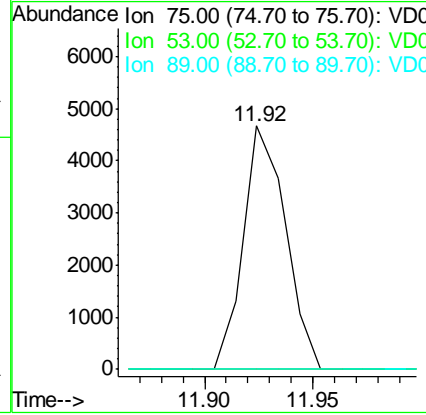
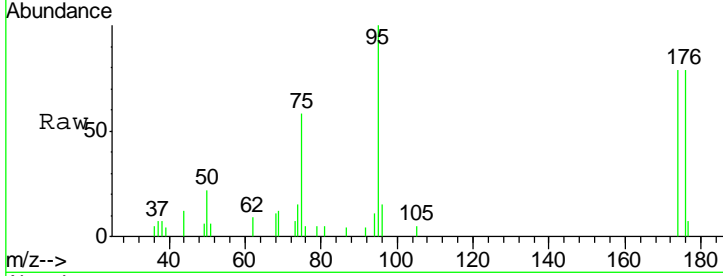




#81  
 trans-1,4-Dichloro-2-butene  
 Concen: 388.926 ug/l  
 RT: 11.92 min Scan# 1188  
 Delta R.T. 0.08 min  
 Lab File: VD058164.D  
 Acq: 15 Jun 2018 20:53

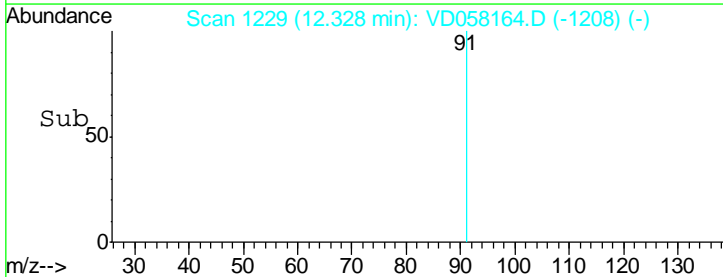
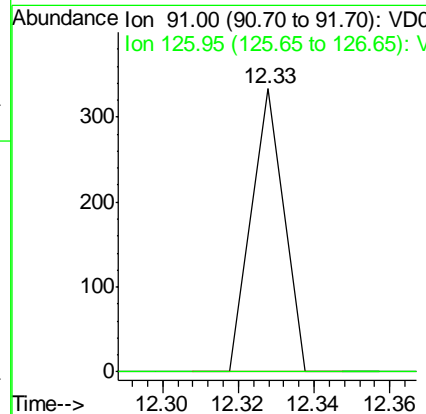
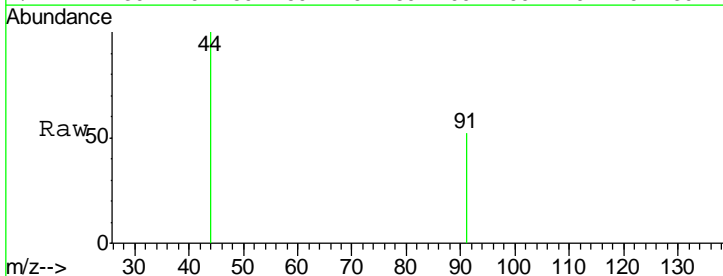
Instrument :  
 MSVOA\_D  
 ClientSampled :

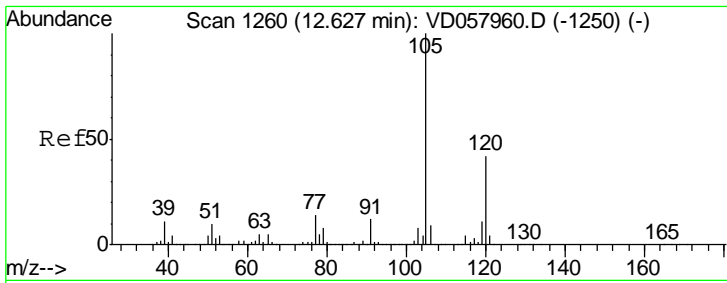
Tgt Ion	Resp	Lower	Upper
75	100		
53	0.0	89.3	133.9#
89	0.0	33.3	49.9#



#82  
 4-Chlorotoluene  
 Concen: Below Cal  
 RT: 12.33 min Scan# 1229  
 Delta R.T. 0.01 min  
 Lab File: VD058164.D  
 Acq: 15 Jun 2018 20:53

Tgt Ion	Resp	Lower	Upper
91	100		
126	0.0	12.5	37.5#

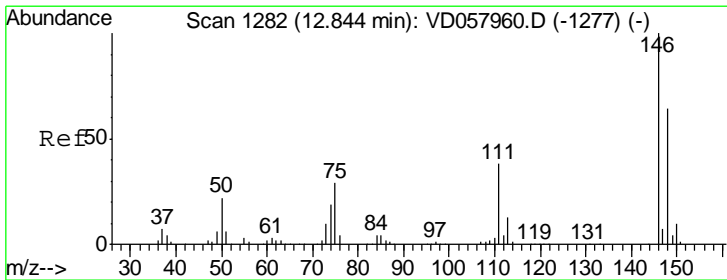
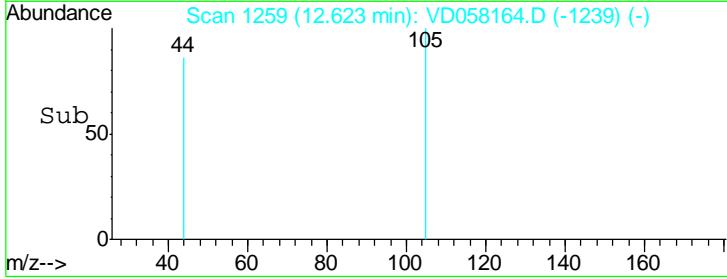
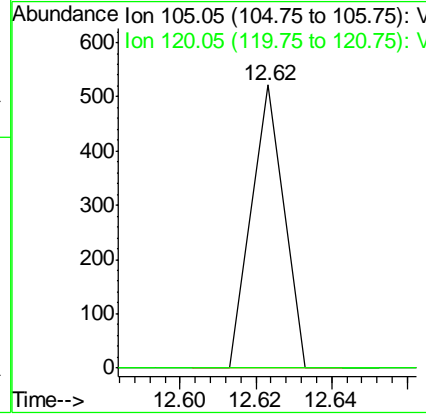
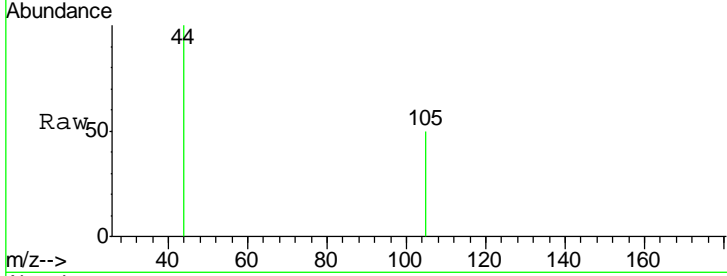




#84  
 1,2,4-Trimethylbenzene  
 Concen: 1.266 ug/l  
 RT: 12.62 min Scan# 1259  
 Delta R.T. -0.00 min  
 Lab File: VD058164.D  
 Acq: 15 Jun 2018 20:53

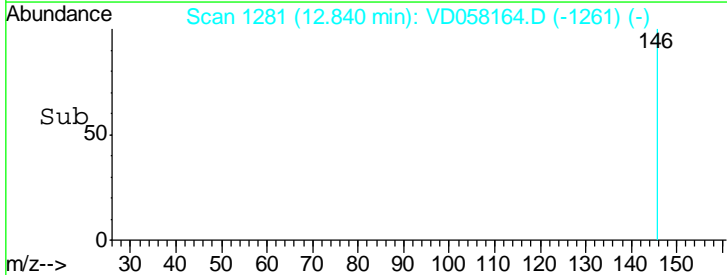
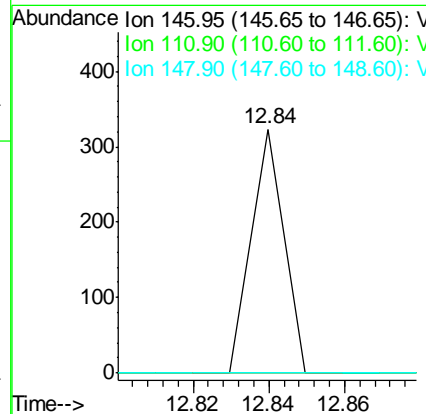
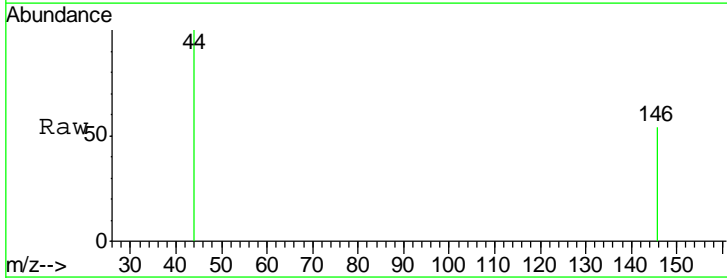
Instrument :  
 MSVOA\_D  
 ClientSampled :

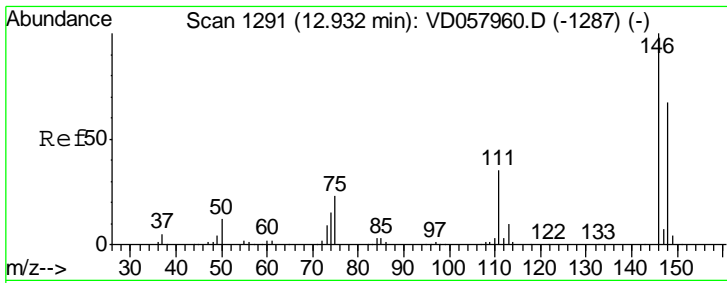
Tgt Ion: 105 Resp: 308  
 Ion Ratio Lower Upper  
 105 100  
 120 0.0 21.2 63.6#



#87  
 1,3-Dichlorobenzene  
 Concen: 1.315 ug/l  
 RT: 12.84 min Scan# 1281  
 Delta R.T. -0.00 min  
 Lab File: VD058164.D  
 Acq: 15 Jun 2018 20:53

Tgt Ion: 146 Resp: 191  
 Ion Ratio Lower Upper  
 146 100  
 111 0.0 19.1 57.3#  
 148 0.0 32.0 96.2#

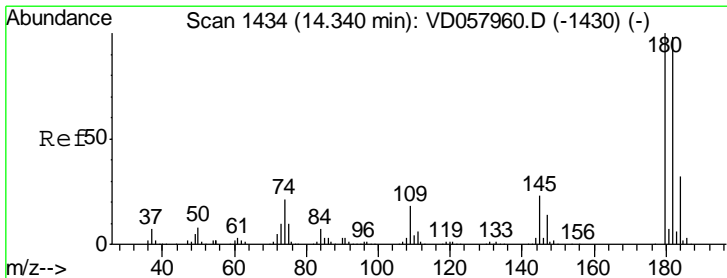
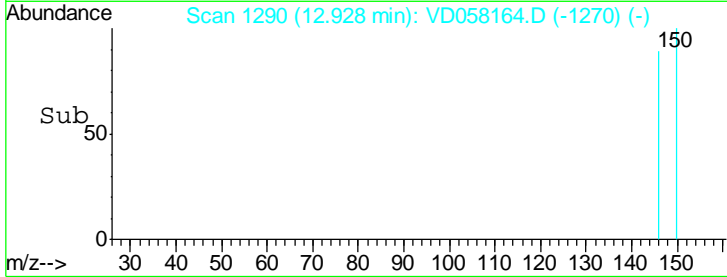
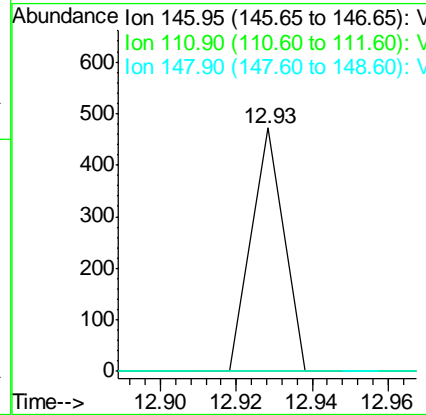
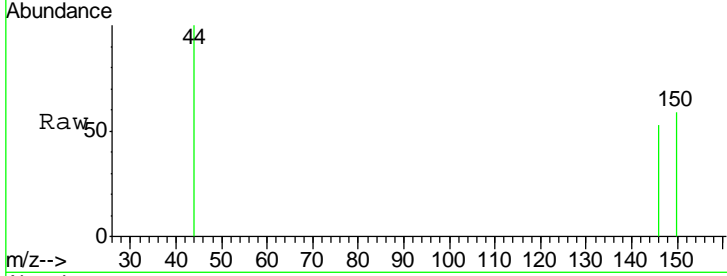




#88  
 1,4-Dichlorobenzene  
 Concen: 1.971 ug/l  
 RT: 12.93 min Scan# 1290  
 Delta R.T. -0.00 min  
 Lab File: VD058164.D  
 Acq: 15 Jun 2018 20:53

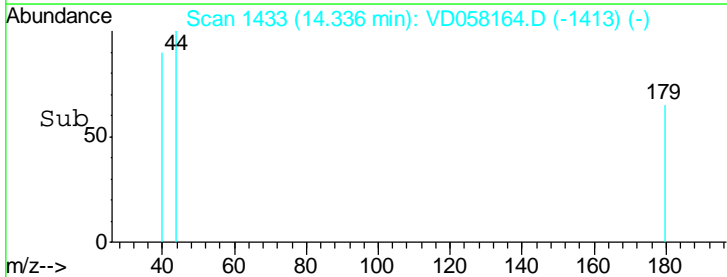
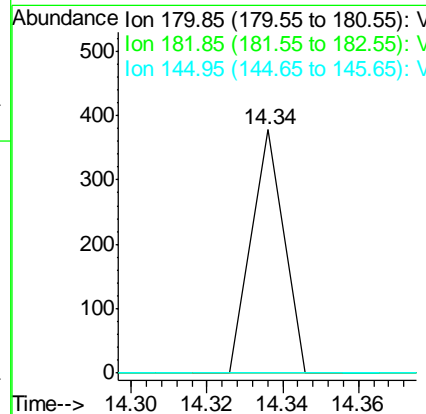
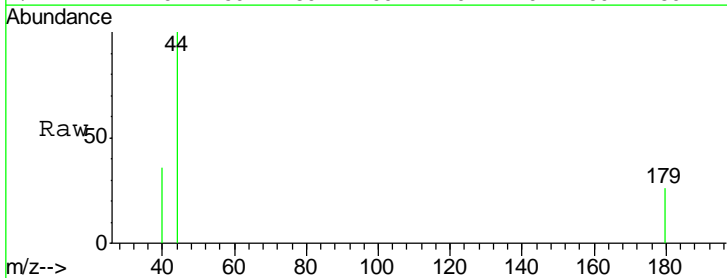
Instrument :  
 MSVOA\_D  
 ClientSampled :

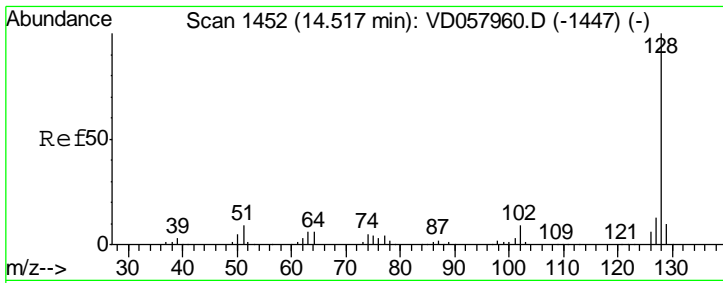
Tgt Ion	Resp	Lower	Upper
146	100		
111	0.0	17.3	52.0#
148	0.0	33.4	100.2#



#93  
 1,2,4-Trichlorobenzene  
 Concen: 2.033 ug/l  
 RT: 14.34 min Scan# 1433  
 Delta R.T. -0.00 min  
 Lab File: VD058164.D  
 Acq: 15 Jun 2018 20:53

Tgt Ion	Resp	Lower	Upper
180	100		
182	0.0	49.0	147.2#
145	0.0	11.8	35.3#

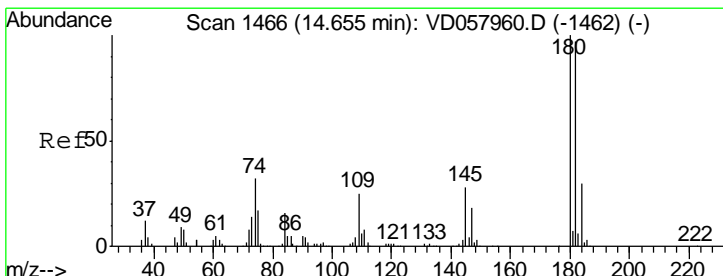
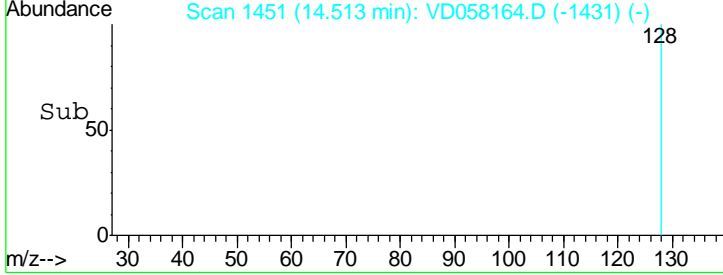
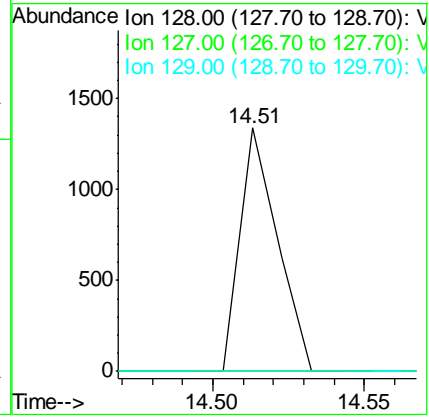
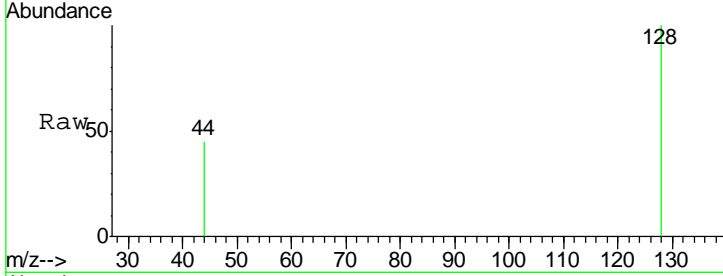




#95  
 Naphthalene  
 Concen: 8.175 ug/l  
 RT: 14.51 min Scan# 1451  
 Delta R.T. -0.00 min  
 Lab File: VD058164.D  
 Acq: 15 Jun 2018 20:53

Instrument : MSVOA\_D  
 ClientSampled :

Tgt Ion	Resp	Lower	Upper
128	1156		
127	0.0	10.2	15.2#
129	0.0	8.2	12.2#



#96  
 1,2,3-Trichlorobenzene  
 Concen: 1.904 ug/l  
 RT: 14.66 min Scan# 1466  
 Delta R.T. 0.01 min  
 Lab File: VD058164.D  
 Acq: 15 Jun 2018 20:53

Tgt Ion	Resp	Lower	Upper
180	178		
182	104.3	48.5	145.5
145	0.0	14.2	42.8#

