

Data Path : Z:\voasrv\HPCHEM1\MSVOA\_D\Data\VD061924\  
 Data File : VD079210.D  
 Acq On : 19 Jun 2024 14:13  
 Operator : RP/MD  
 Sample : P2897-15RE  
 Misc : 2.86G/10ml/MSVOA\_D/SOIL/B  
 ALS Vial : 7 Sample Multiplier: 1

Instrument :  
 MSVOA\_D  
 ClientSampleId :  
 C0T62

Integration Parameters: LSCINT.P

Integrator: RTE  
 Smoothing : OFF  
 Sampling : 1  
 Start Thrs : 0.2  
 Stop Thrs : 0

Filtering: 5  
 Min Area: 0 % of largest Peak  
 Max Peaks: 100  
 Peak Location: TOP

If leading or trailing edge < 100 prefer < Baseline drop else tangent >  
 Peak separation: 5

Method : Z:\voasrv\HPCHEM1\MSVOA\_D\Method\SFAMDLM052924SMA.M  
 Title : SFAM01.0

Signal : TIC: VD079210.D\data.ms

peak #	R.T. min	first scan	max scan	last scan	PK TY	peak height	corr. area	corr. % max.	% of total
1	1.617	3	5	8	rBV	448	422	0.08%	0.010%
2	1.681	11	16	20	rVV	60967	91920	17.74%	2.267%
3	1.734	20	25	36	rVB	156754	310381	59.89%	7.656%
4	2.270	111	116	123	rVV	69628	97841	18.88%	2.413%
5	2.323	123	125	126	rVB	1828	982	0.19%	0.024%
6	2.793	199	205	214	rVB2	65698	123928	23.91%	3.057%
7	3.387	305	306	308	rBV	433	275	0.05%	0.007%
8	3.699	357	359	361	rBV2	352	311	0.06%	0.008%
9	3.911	386	395	406	rVB2	37975	102670	19.81%	2.533%
10	3.999	406	410	411	rVB	894	818	0.16%	0.020%
11	4.028	411	415	418	rBV4	1339	2445	0.47%	0.060%
12	4.058	418	420	421	rVB	690	378	0.07%	0.009%
13	4.222	446	448	451	rVB	877	900	0.17%	0.022%
14	4.258	451	454	455	rBV	1088	1030	0.20%	0.025%
15	4.275	455	457	458	rVV	701	459	0.09%	0.011%
16	4.317	462	464	466	rBV2	632	526	0.10%	0.013%
17	4.452	486	487	488	rBV	666	339	0.07%	0.008%
18	4.540	501	502	505	rVB	503	306	0.06%	0.008%
19	4.593	510	511	513	rBV	530	418	0.08%	0.010%
20	4.617	513	515	517	rVB	634	307	0.06%	0.008%
21	4.799	538	546	551	rBV4	6072	15489	2.99%	0.382%
22	4.875	558	559	563	rVB2	391	322	0.06%	0.008%
23	4.940	567	570	572	rBV2	544	664	0.13%	0.016%
24	4.975	574	576	580	rVB2	496	400	0.08%	0.010%
25	5.122	598	601	602	rBV2	372	378	0.07%	0.009%
26	5.140	602	604	609	rBV2	491	815	0.16%	0.020%
27	5.211	614	616	620	rVB2	467	589	0.11%	0.015%
28	5.275	620	627	629	rBV2	772	1664	0.32%	0.041%
29	5.299	629	631	634	rVB2	436	322	0.06%	0.008%
30	5.358	639	641	642	rVB	525	303	0.06%	0.007%
31	5.417	649	651	652	rVB	807	443	0.09%	0.011%
32	5.517	667	668	672	rBV2	547	490	0.09%	0.012%
33	5.622	684	686	687	rBV2	350	327	0.06%	0.008%
34	5.664	690	693	696	rVV2	410	567	0.11%	0.014%
35	5.693	696	698	699	rVV2	453	299	0.06%	0.007%
36	5.711	699	701	702	rVB	465	271	0.05%	0.007%

Data Path : Z:\voasrv\HPCHEM1\MSVOA\_D\Data\VD061924\  
 Data File : VD079210.D  
 Acq On : 19 Jun 2024 14:13  
 Operator : RP/MD  
 Sample : P2897-15RE  
 Misc : 2.86G/10ml/MSVOA\_D/SOIL/B  
 ALS Vial : 7 Sample Multiplier: 1

Instrument :  
 MSVOA\_D  
 ClientSampleId :  
 C0T62

Integration Parameters: LSCINT.P

Integrator: RTE  
 Smoothing : OFF  
 Sampling : 1  
 Start Thrs : 0.2  
 Stop Thrs : 0

Filtering: 5  
 Min Area: 0 % of largest Peak  
 Max Peaks: 100  
 Peak Location: TOP

If leading or trailing edge < 100 prefer < Baseline drop else tangent >  
 Peak separation: 5

Method : Z:\voasrv\HPCHEM1\MSVOA\_D\Method\SFAMDLM052924SMA.M  
 Title : SFAM01.0

37	5.817	717	719	721	rBV	600	471	0.09%	0.012%
38	5.834	721	722	725	rBV2	1026	815	0.16%	0.020%
39	5.964	743	744	748	rVB2	774	788	0.15%	0.019%
40	6.064	759	761	763	rBV2	544	322	0.06%	0.008%
41	6.105	766	768	769	rBV	615	340	0.07%	0.008%
42	6.146	773	775	776	rBV	387	271	0.05%	0.007%
43	6.405	817	819	821	rBV2	346	300	0.06%	0.007%
44	6.505	834	836	839	rBV2	533	455	0.09%	0.011%
45	6.711	868	871	874	rBV	630	1056	0.20%	0.026%
46	6.787	883	884	886	rBV	584	465	0.09%	0.011%
47	6.981	908	917	928	rBV2	13049	38302	7.39%	0.945%
48	7.287	965	969	971	rBV2	512	705	0.14%	0.017%
49	7.363	980	982	983	rBV	637	346	0.07%	0.009%
50	7.563	1007	1016	1029	rVB	70699	179183	34.58%	4.420%
51	7.728	1041	1044	1045	rBV2	492	466	0.09%	0.011%
52	7.981	1086	1087	1091	rVB	586	508	0.10%	0.013%
53	8.058	1096	1100	1103	rBV2	462	578	0.11%	0.014%
54	8.205	1113	1125	1141	rBV3	132291	408351	78.80%	10.073%
55	8.363	1150	1152	1154	rBV	713	599	0.12%	0.015%
56	8.558	1184	1185	1187	rBV2	667	507	0.10%	0.013%
57	8.775	1214	1222	1231	rBV	181569	351070	67.74%	8.660%
58	9.028	1264	1265	1268	rBV	483	543	0.10%	0.013%
59	9.069	1270	1272	1273	rVB	524	332	0.06%	0.008%
60	9.087	1273	1275	1278	rBV2	610	757	0.15%	0.019%
61	9.210	1286	1296	1306	rBV	93643	195086	37.65%	4.812%
62	9.281	1306	1308	1310	rBV2	702	425	0.08%	0.010%
63	9.499	1341	1345	1348	rBV2	393	534	0.10%	0.013%
64	9.540	1351	1352	1355	rVB	463	342	0.07%	0.008%
65	9.863	1405	1407	1410	rVB	674	548	0.11%	0.014%
66	9.928	1416	1418	1420	rVB	518	419	0.08%	0.010%
67	9.981	1420	1427	1434	rBV2	49445	93709	18.08%	2.312%
68	10.269	1469	1476	1484	rBV	164056	298710	57.64%	7.368%
69	10.522	1513	1519	1529	rVB2	38646	65808	12.70%	1.623%
70	10.657	1540	1542	1547	rVB2	2329	3444	0.66%	0.085%
71	10.875	1573	1579	1586	rBV	51277	84958	16.39%	2.096%
72	11.093	1614	1616	1618	rBV	528	427	0.08%	0.011%
73	11.310	1650	1653	1655	rBV2	542	548	0.11%	0.014%
74	11.510	1685	1687	1689	rVB	828	540	0.10%	0.013%
75	11.581	1691	1699	1708	rVV	301527	518225	100.00%	12.783%
76	11.840	1742	1743	1746	rVB	737	380	0.07%	0.009%

Data Path : Z:\voasrv\HPCHEM1\MSVOA\_D\Data\VD061924\  
 Data File : VD079210.D  
 Acq On : 19 Jun 2024 14:13  
 Operator : RP/MD  
 Sample : P2897-15RE  
 Misc : 2.86G/10ml/MSVOA\_D/SOIL/B  
 ALS Vial : 7 Sample Multiplier: 1

Instrument :  
 MSVOA\_D  
 ClientSampleId :  
 C0T62

Integration Parameters: LSCINT.P

Integrator: RTE  
 Smoothing : OFF Filtering: 5  
 Sampling : 1 Min Area: 0 % of largest Peak  
 Start Thrs: 0.2 Max Peaks: 100  
 Stop Thrs : 0 Peak Location: TOP

If leading or trailing edge < 100 prefer < Baseline drop else tangent >  
 Peak separation: 5

Method : Z:\voasrv\HPCHEM1\MSVOA\_D\Method\SFAMDLM052924SMA.M  
 Title : SFAM01.0

77	11.869	1746	1748	1750	rVB2	596	371	0.07%	0.009%
78	11.904	1750	1754	1755	rBV2	473	581	0.11%	0.014%
79	12.240	1809	1811	1814	rVB	744	604	0.12%	0.015%
80	12.575	1866	1868	1869	rBV	656	411	0.08%	0.010%
81	12.646	1874	1880	1888	rVB2	112599	184103	35.53%	4.541%
82	12.857	1914	1916	1918	rBV	588	536	0.10%	0.013%
83	13.081	1949	1954	1957	rBV2	6143	9074	1.75%	0.224%
84	13.204	1972	1975	1980	rVB2	1149	1558	0.30%	0.038%
85	13.316	1992	1994	1997	rBV2	488	573	0.11%	0.014%
86	13.346	1997	1999	2001	rVB	797	443	0.09%	0.011%
87	13.516	2021	2028	2038	rVB	291997	471184	90.92%	11.623%
88	13.610	2040	2044	2049	rVV3	5217	7735	1.49%	0.191%
89	13.675	2053	2055	2058	rVB2	527	545	0.11%	0.013%
90	13.728	2062	2064	2067	rBV2	852	1024	0.20%	0.025%
91	13.810	2070	2078	2086	rVB	182918	300633	58.01%	7.416%
92	13.881	2089	2090	2093	rBV	671	542	0.10%	0.013%
93	13.957	2101	2103	2104	rVB2	915	556	0.11%	0.014%
94	13.975	2104	2106	2112	rBV2	540	726	0.14%	0.018%
95	14.263	2149	2155	2161	rBV2	23654	41112	7.93%	1.014%
96	14.381	2169	2175	2181	rBV4	10607	17528	3.38%	0.432%
97	14.904	2263	2264	2266	rBV2	928	639	0.12%	0.016%
98	15.057	2288	2290	2291	rBV	647	358	0.07%	0.009%
99	15.475	2359	2361	2363	rVB	2011	1019	0.20%	0.025%
100	15.640	2387	2389	2390	rBV2	737	445	0.09%	0.011%

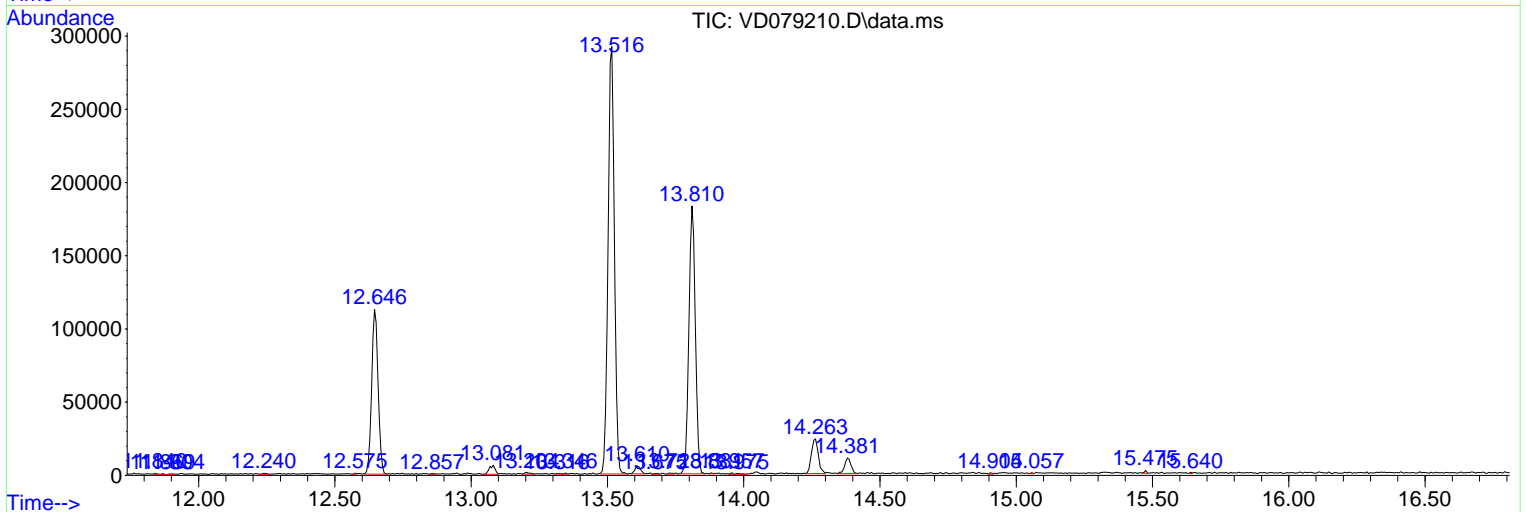
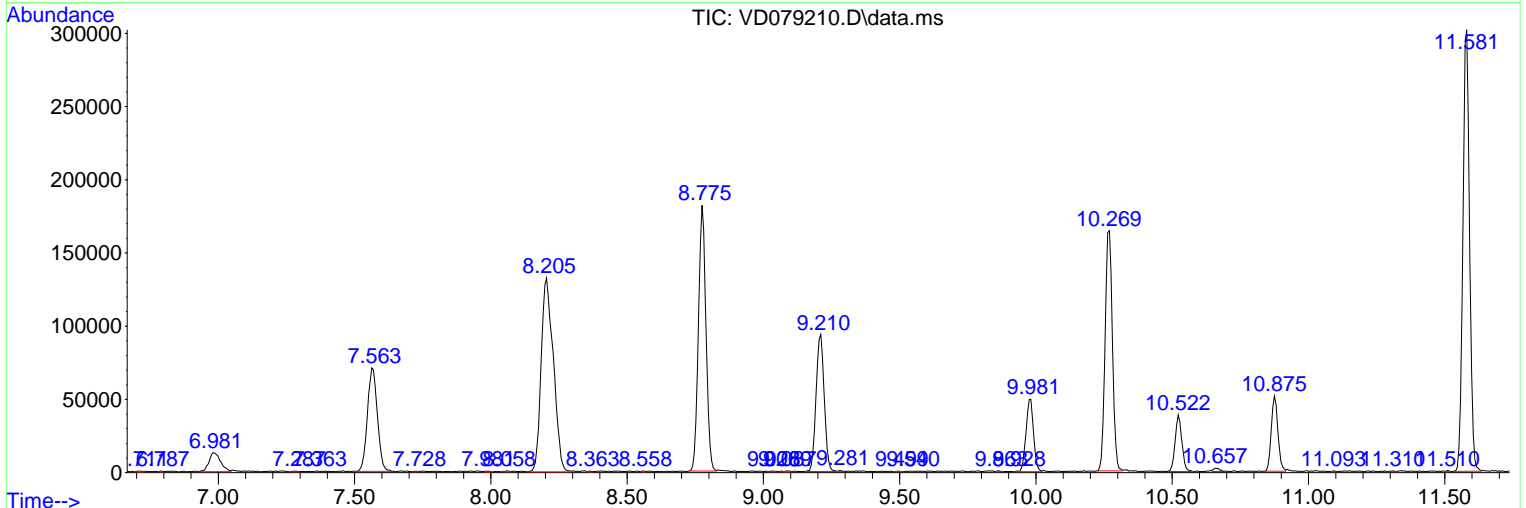
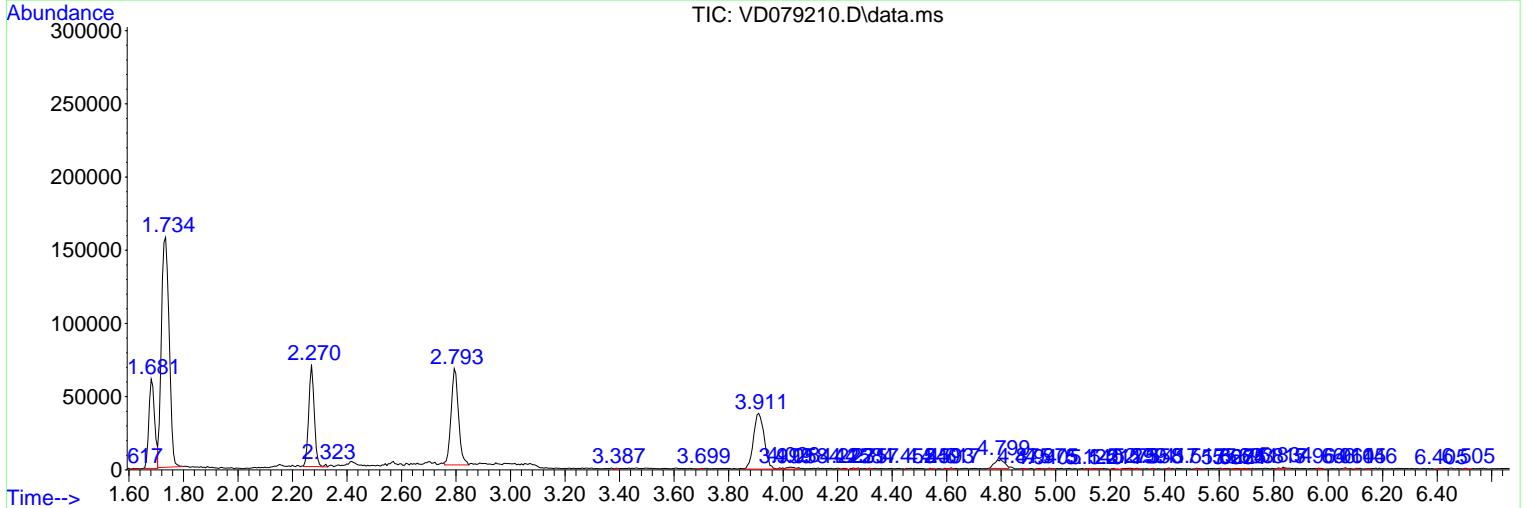
Sum of corrected areas: 4053932

Data Path : Z:\voasrv\HPCHEM1\MSVOA\_D\Data\VD061924\  
 Data File : VD079210.D  
 Acq On : 19 Jun 2024 14:13  
 Operator : RP/MD  
 Sample : P2897-15RE  
 Misc : 2.86G/10ml/MSVOA\_D/SOIL/B  
 ALS Vial : 7 Sample Multiplier: 1

Instrument :  
 MSVOA\_D  
 ClientSampleId :  
 C0T62

Quant Method : Z:\voasrv\HPCHEM1\MSVOA\_D\Method\SFAMDLM052924SMA.M  
 Quant Title : SFAM01.0

TIC Library : C:\Database\NIST20.L  
 TIC Integration Parameters: LSCINT.P



Data Path : Z:\voasrv\HPCHEM1\MSVOA\_D\Data\VD061924\  
 Data File : VD079210.D  
 Acq On : 19 Jun 2024 14:13  
 Operator : RP/MD  
 Sample : P2897-15RE  
 Misc : 2.86G/10ml/MSVOA\_D/SOIL/B  
 ALS Vial : 7 Sample Multiplier: 1

Instrument :  
 MSVOA\_D  
 ClientSampleId :  
 C0T62

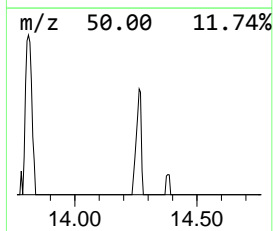
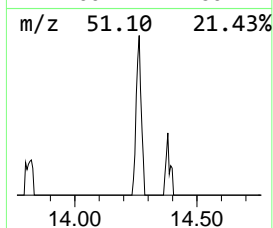
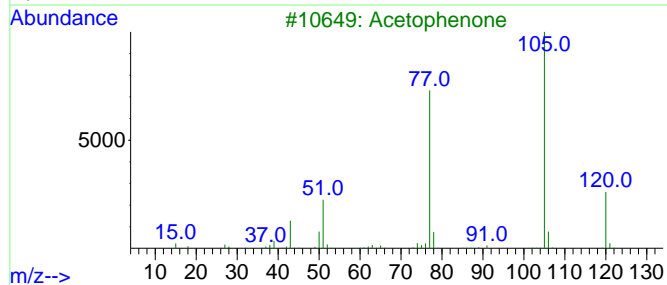
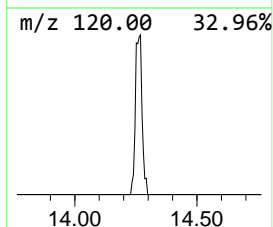
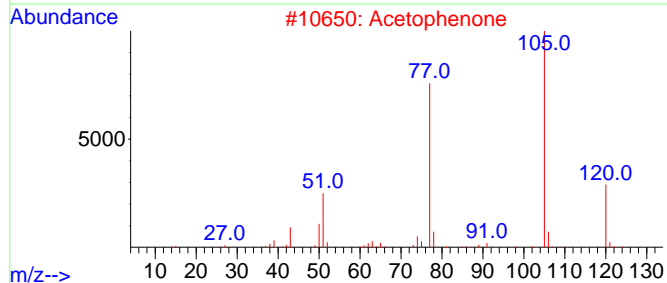
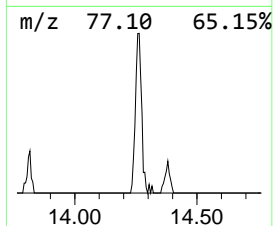
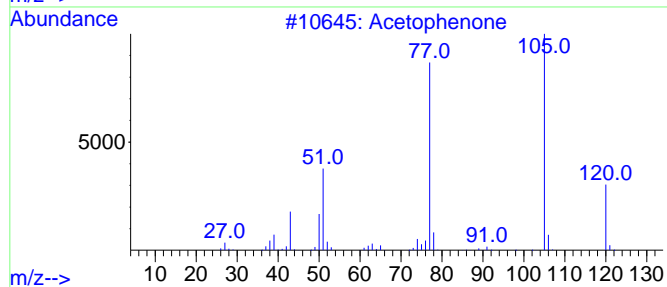
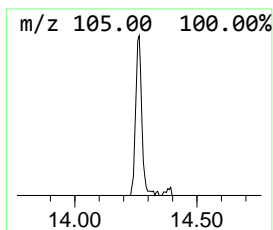
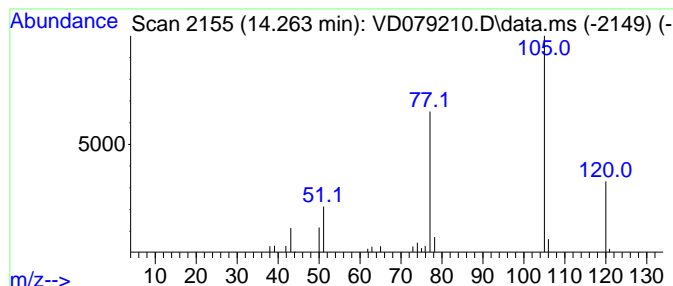
Quant Method : Z:\voasrv\HPCHEM1\MSVOA\_D\Method\SFAMDLM052924SMA.M  
 Quant Title : SFAM01.0

TIC Library : C:\Database\NIST20.L  
 TIC Integration Parameters: LSCINT.P

\*\*\*\*\*  
 Peak Number 4 Acetophenone Concentration Rank 4

R.T.	EstConc	Area	Relative to ISTD	R.T.
14.263	2.18 ug/L	41112	1,4-Dichlorobenzene-d4	13.516

Hit#	of	5	Tentative ID	MW	MolForm	CAS#	Qual
1			Acetophenone	120	C8H8O	000098-86-2	91
2			Acetophenone	120	C8H8O	000098-86-2	91
3			Acetophenone	120	C8H8O	000098-86-2	90
4			Acetophenone	120	C8H8O	000098-86-2	83
5			Disulfide, dibenzoyl	274	C14H10O2S2	000644-32-6	72



Data Path : Z:\voasrv\HPCHEM1\MSVOA\_D\Data\VD061924\  
Data File : VD079210.D  
Acq On : 19 Jun 2024 14:13  
Operator : RP/MD  
Sample : P2897-15RE  
Misc : 2.86G/10ml/MSVOA\_D/SOIL/B  
ALS Vial : 7 Sample Multiplier: 1

Instrument :  
MSVOA\_D  
ClientSampleId :  
C0T62

Quant Method : Z:\voasrv\HPCHEM1\MSVOA\_D\Method\SFAMDLM052924SMA.M  
Quant Title : SFAM01.0

TIC Library : C:\Database\NIST0.L  
TIC Integration Parameters: LSCINT.P

TIC Top Hit name	RT	EstConc	Units	Response	--Internal Standard--			
					#	RT	Resp	Conc
Acetophenone	14.263	2.2	ug/L	41112	3	13.516	471184	25.0