

Data Path : Z:\voasrv\HPCHEM1\MSVOA_D\Data\VD072221\
 Data File : VD069814.D
 Acq On : 22 Jul 2021 18:12
 Operator : VA/SY
 Sample : M3117-04
 Misc : 5.09G/5.00ml/MSVOA_D/SOIL
 ALS Vial : 10 Sample Multiplier: 1

Instrument :
 MSVOA_D
 ClientSampleId :
 NJ-CLEAN-4

Quant Time: Jul 23 05:02:43 2021
 Quant Method : Z:\voasrv\HPCHEM1\MSVOA_D\Method\82D072221S.M
 Quant Title : SW846 8260
 QLast Update : Fri Jul 23 04:51:13 2021
 Response via : Initial Calibration

Compound	R.T.	QIon	Response	Conc	Units	Dev(Min)

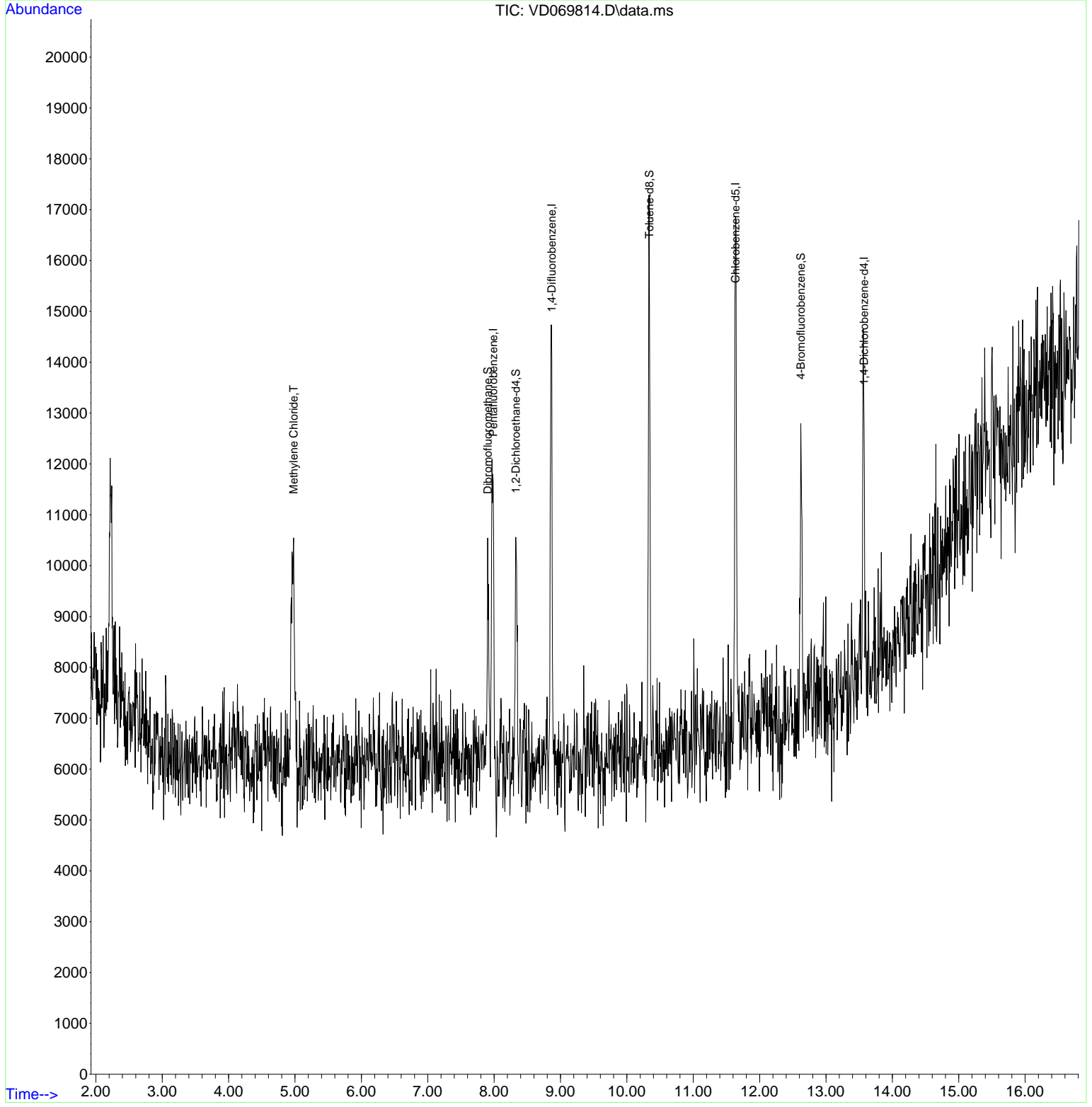
Internal Standards						
1) Pentafluorobenzene	7.985	168	5035	50.000	ug/l	0.00
34) 1,4-Difluorobenzene	8.867	114	8676	50.000	ug/l	0.00
63) Chlorobenzene-d5	11.638	117	6889	50.000	ug/l	# 0.00
72) 1,4-Dichlorobenzene-d4	13.573	152	2386	50.000	ug/l	0.00
System Monitoring Compounds						
33) 1,2-Dichloroethane-d4	8.326	65	3183	54.967	ug/l	0.00
Spiked Amount	50.000	Range	50 - 163	Recovery	=	109.940%
35) Dibromofluoromethane	7.903	113	1067	19.509	ug/l	-0.01
Spiked Amount	50.000	Range	54 - 147	Recovery	=	39.020%#
50) Toluene-d8	10.338	98	7169	33.993	ug/l	0.00
Spiked Amount	50.000	Range	49 - 140	Recovery	=	67.980%
62) 4-Bromofluorobenzene	12.620	95	2282	32.377	ug/l	0.00
Spiked Amount	50.000	Range	25 - 144	Recovery	=	64.760%
Target Compounds						
					Qvalue	
20) Methylene Chloride	4.979	84	4017	53.456	ug/l	# 76

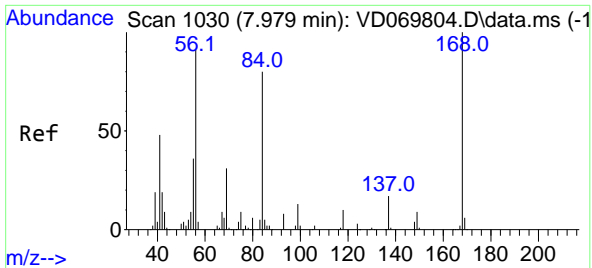
(#) = qualifier out of range (m) = manual integration (+) = signals summed

Data Path : Z:\voasrv\HPCHEM1\MSVOA_D\Data\VD072221\
 Data File : VD069814.D
 Acq On : 22 Jul 2021 18:12
 Operator : VA/SY
 Sample : M3117-04
 Misc : 5.09G/5.00ml/MSVOA_D/SOIL
 ALS Vial : 10 Sample Multiplier: 1

Instrument :
 MSVOA_D
ClientSampled :
 NJ-CLEAN-4

Quant Time: Jul 23 05:02:43 2021
 Quant Method : Z:\voasrv\HPCHEM1\MSVOA_D\Method\82D072221S.M
 Quant Title : SW846 8260
 QLast Update : Fri Jul 23 04:51:13 2021
 Response via : Initial Calibration



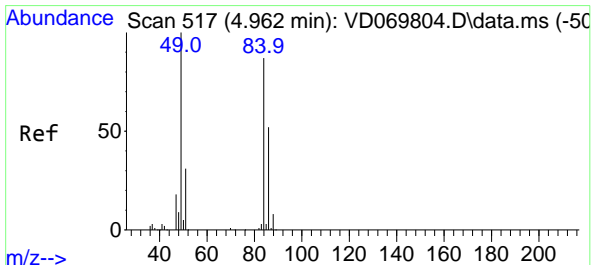
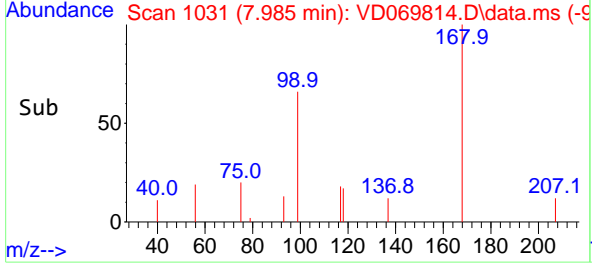
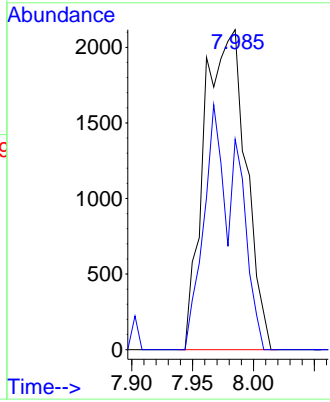
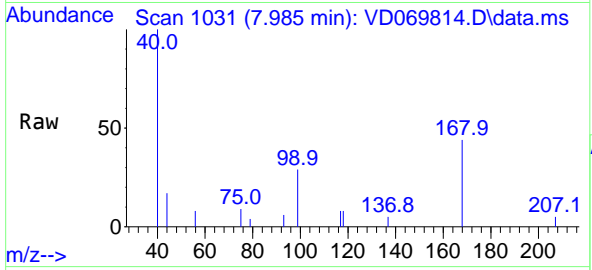


#1
 Pentafluorobenzene
 Concen: 50.000 ug/l
 RT: 7.985 min Scan# 1031
 Delta R.T. 0.006 min
 Lab File: VD069814.D
 Acq: 22 Jul 2021 18:12

Instrument :
 MSVOA_D
 ClientSampled :
 NJ-CLEAN-4

Tgt Ion:168 Resp: 5035

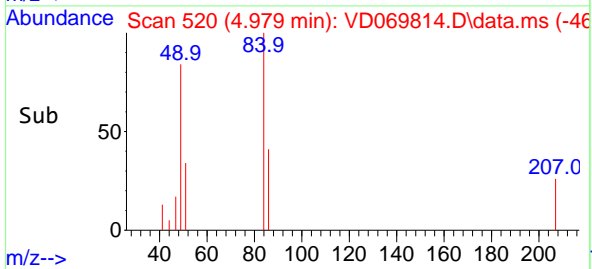
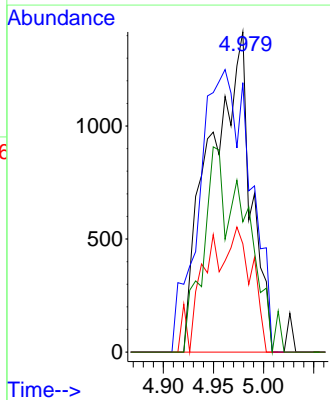
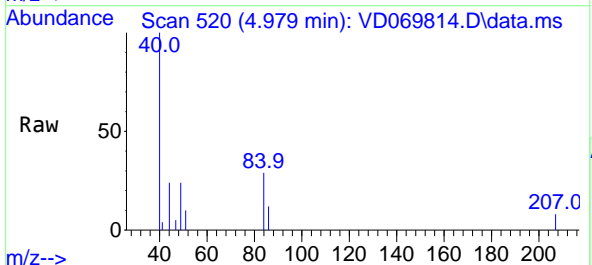
Ion	Ratio	Lower	Upper
168	100		
99	65.8	51.1	76.7

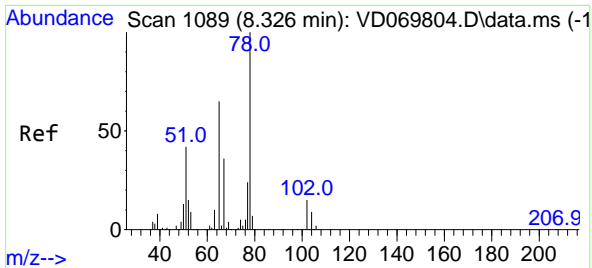


#20
 Methylene Chloride
 Concen: 53.456 ug/l
 RT: 4.979 min Scan# 520
 Delta R.T. 0.017 min
 Lab File: VD069814.D
 Acq: 22 Jul 2021 18:12

Tgt Ion: 84 Resp: 4017

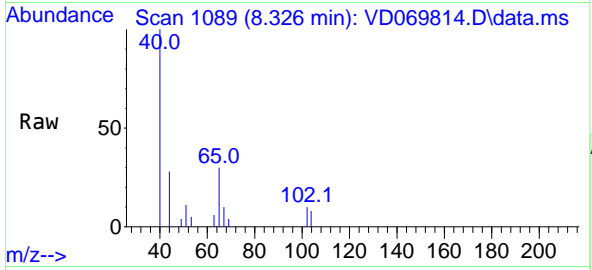
Ion	Ratio	Lower	Upper
84	100		
49	84.2	92.4	138.6#
51	33.8	28.5	42.7
86	40.7	48.2	72.4#



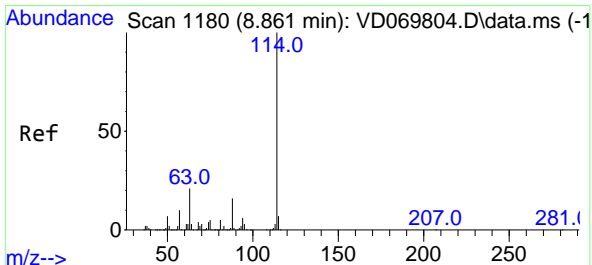
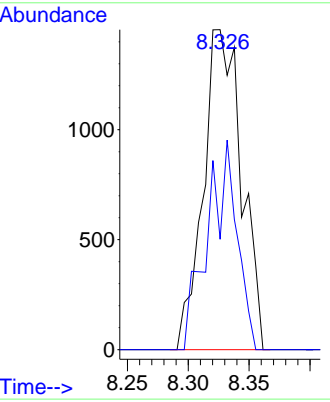
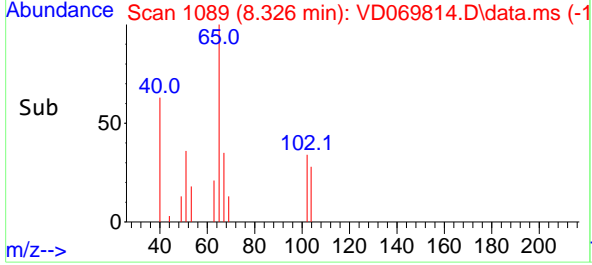


#33
 1,2-Dichloroethane-d4
 Concen: 54.967 ug/l
 RT: 8.326 min Scan# 1089
 Delta R.T. -0.000 min
 Lab File: VD069814.D
 Acq: 22 Jul 2021 18:12

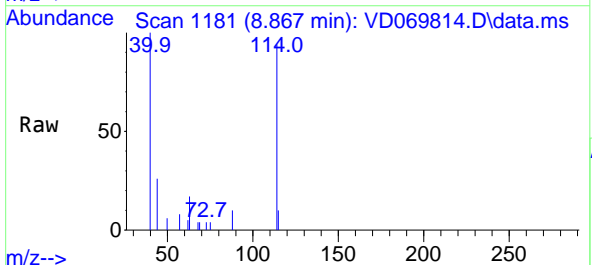
Instrument :
 MSVOA_D
ClientSampled :
 NJ-CLEAN-4



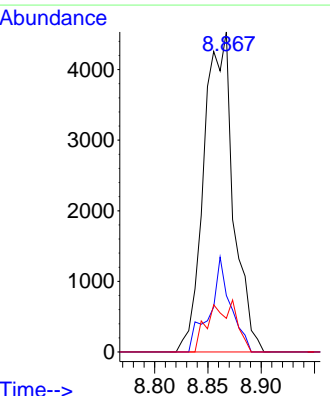
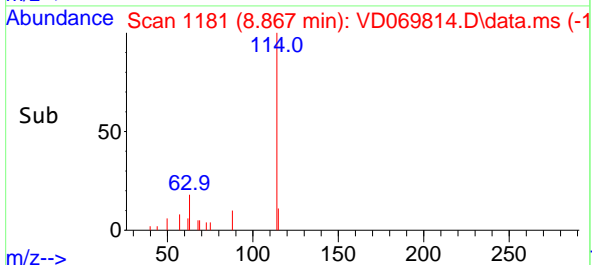
Tgt Ion: 65 Resp: 3183
 Ion Ratio Lower Upper
 65 100
 67 50.5 0.0 111.2

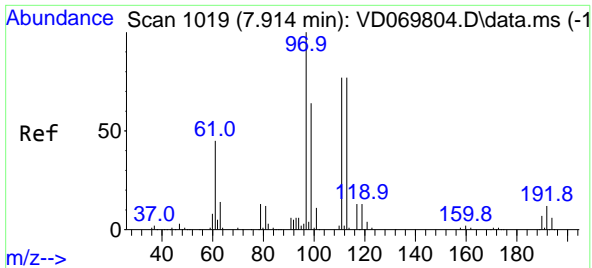


#34
 1,4-Difluorobenzene
 Concen: 50.000 ug/l
 RT: 8.867 min Scan# 1181
 Delta R.T. 0.006 min
 Lab File: VD069814.D
 Acq: 22 Jul 2021 18:12



Tgt Ion: 114 Resp: 8676
 Ion Ratio Lower Upper
 114 100
 63 17.7 0.0 41.6
 88 10.5 0.0 31.4



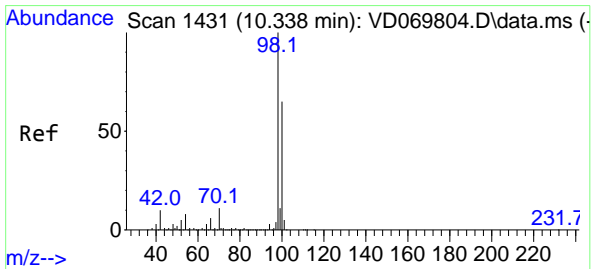
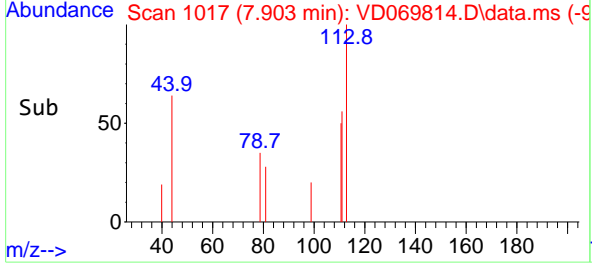
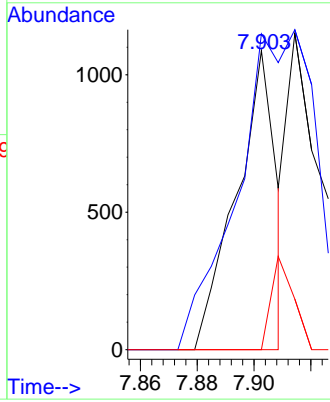
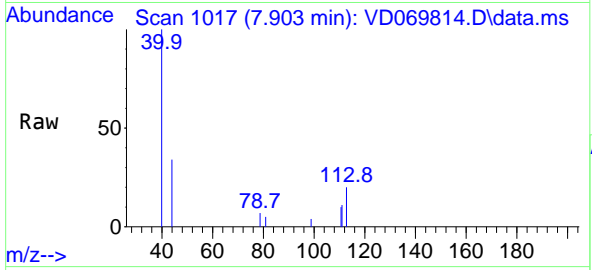


#35
 Dibromofluoromethane
 Concen: 19.509 ug/l
 RT: 7.903 min Scan# 1017
 Delta R.T. -0.012 min
 Lab File: VD069814.D
 Acq: 22 Jul 2021 18:12

Instrument :
 MSVOA_D
ClientSampled :
 NJ-CLEAN-4

Tgt Ion:113 Resp: 1067

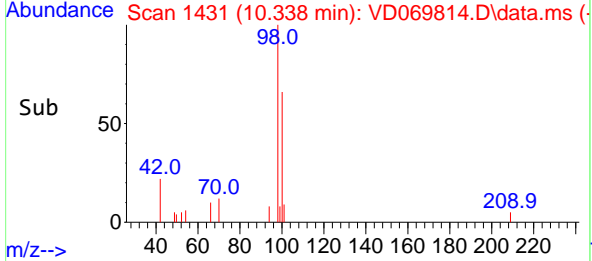
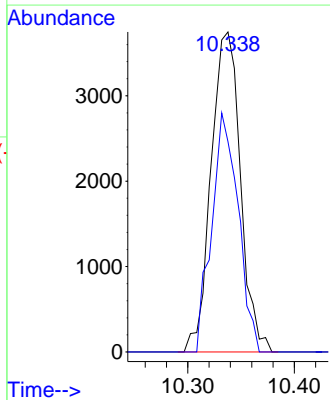
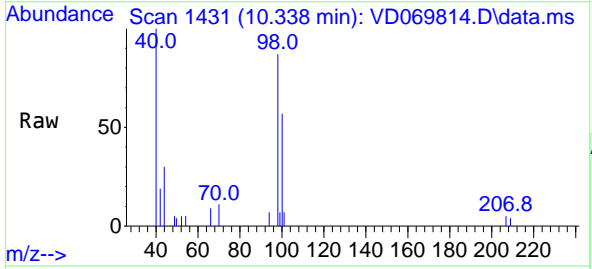
Ion	Ratio	Lower	Upper
113	100		
111	234.7	80.5	120.7#
192	17.3	12.6	19.0

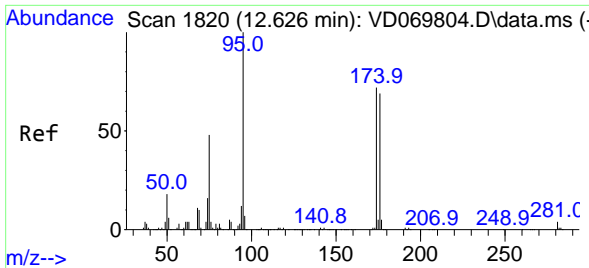


#50
 Toluene-d8
 Concen: 33.993 ug/l
 RT: 10.338 min Scan# 1431
 Delta R.T. -0.000 min
 Lab File: VD069814.D
 Acq: 22 Jul 2021 18:12

Tgt Ion: 98 Resp: 7169

Ion	Ratio	Lower	Upper
98	100		
100	67.3	51.9	77.9



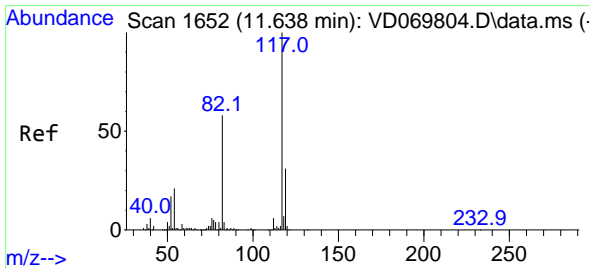
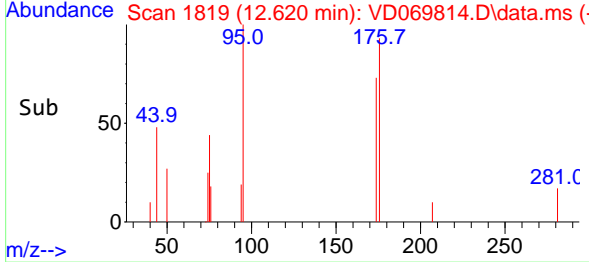
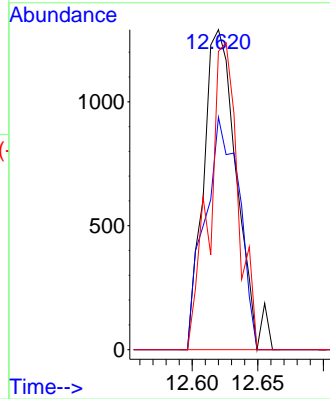
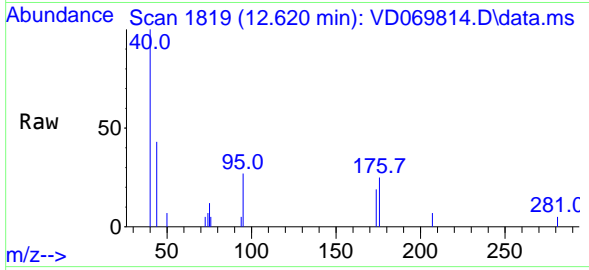


#62
 4-Bromofluorobenzene
 Concen: 32.377 ug/l
 RT: 12.620 min Scan# 1819
 Delta R.T. -0.006 min
 Lab File: VD069814.D
 Acq: 22 Jul 2021 18:12

Instrument :
 MSVOA_D
 ClientSampled :
 NJ-CLEAN-4

Tgt Ion: 95 Resp: 2282

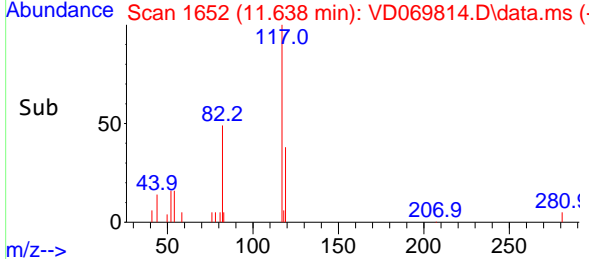
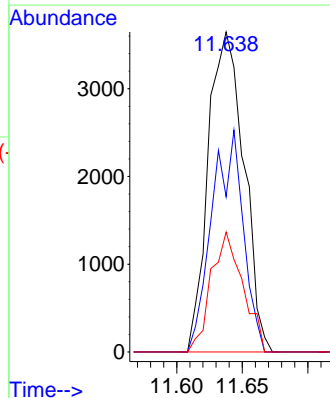
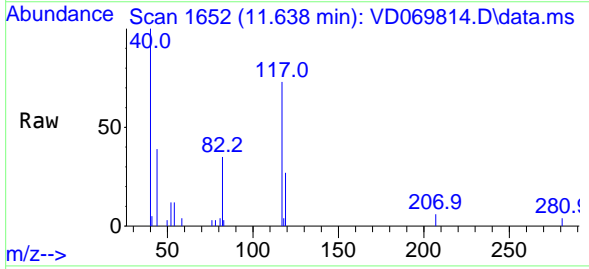
Ion	Ratio	Lower	Upper
95	100		
174	74.5	0.0	142.6
176	82.5	0.0	134.2

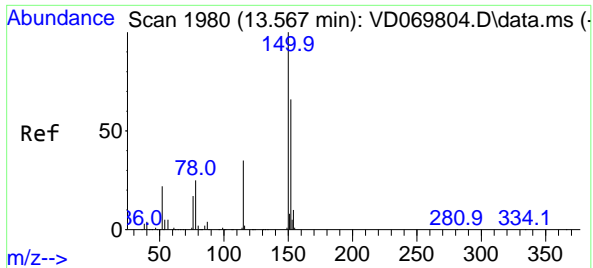


#63
 Chlorobenzene-d5
 Concen: 50.000 ug/l
 RT: 11.638 min Scan# 1652
 Delta R.T. -0.000 min
 Lab File: VD069814.D
 Acq: 22 Jul 2021 18:12

Tgt Ion: 117 Resp: 6889

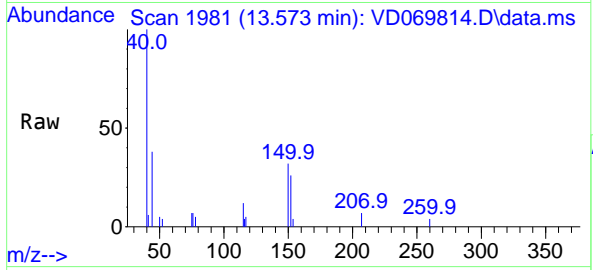
Ion	Ratio	Lower	Upper
117	100		
82	48.5	46.3	69.5
119	37.5	24.7	37.1#





#72
 1,4-Dichlorobenzene-d4
 Concen: 50.000 ug/l
 RT: 13.573 min Scan# 1981
 Delta R.T. 0.006 min
 Lab File: VD069814.D
 Acq: 22 Jul 2021 18:12

Instrument :
 MSVOA_D
 ClientSampled :
 NJ-CLEAN-4



Tgt Ion:152 Resp: 2386

Ion	Ratio	Lower	Upper
152	100		
115	45.5	31.1	93.3
150	146.9	0.0	343.0

