

Data Path : Z:\voasrv\HPCHEM1\MSVOA\_D\Data\VD073024\  
 Data File : VD079449.D  
 Acq On : 30 Jul 2024 10:23  
 Operator : RP/MD  
 Sample : VD0730SBL01  
 Misc : 5.00G/5.0ml/MSVOA\_D/SOIL  
 ALS Vial : 4 Sample Multiplier: 1

Instrument :  
 MSVOA\_D  
 ClientSampleId :  
 VD0730SBL01

Quant Time: Jul 30 15:41:04 2024  
 Quant Method : Z:\voasrv\HPCHEM1\MSVOA\_D\Method\82D072924S.M  
 Quant Title : SW846 8260  
 QLast Update : Tue Jul 30 03:50:47 2024  
 Response via : Initial Calibration

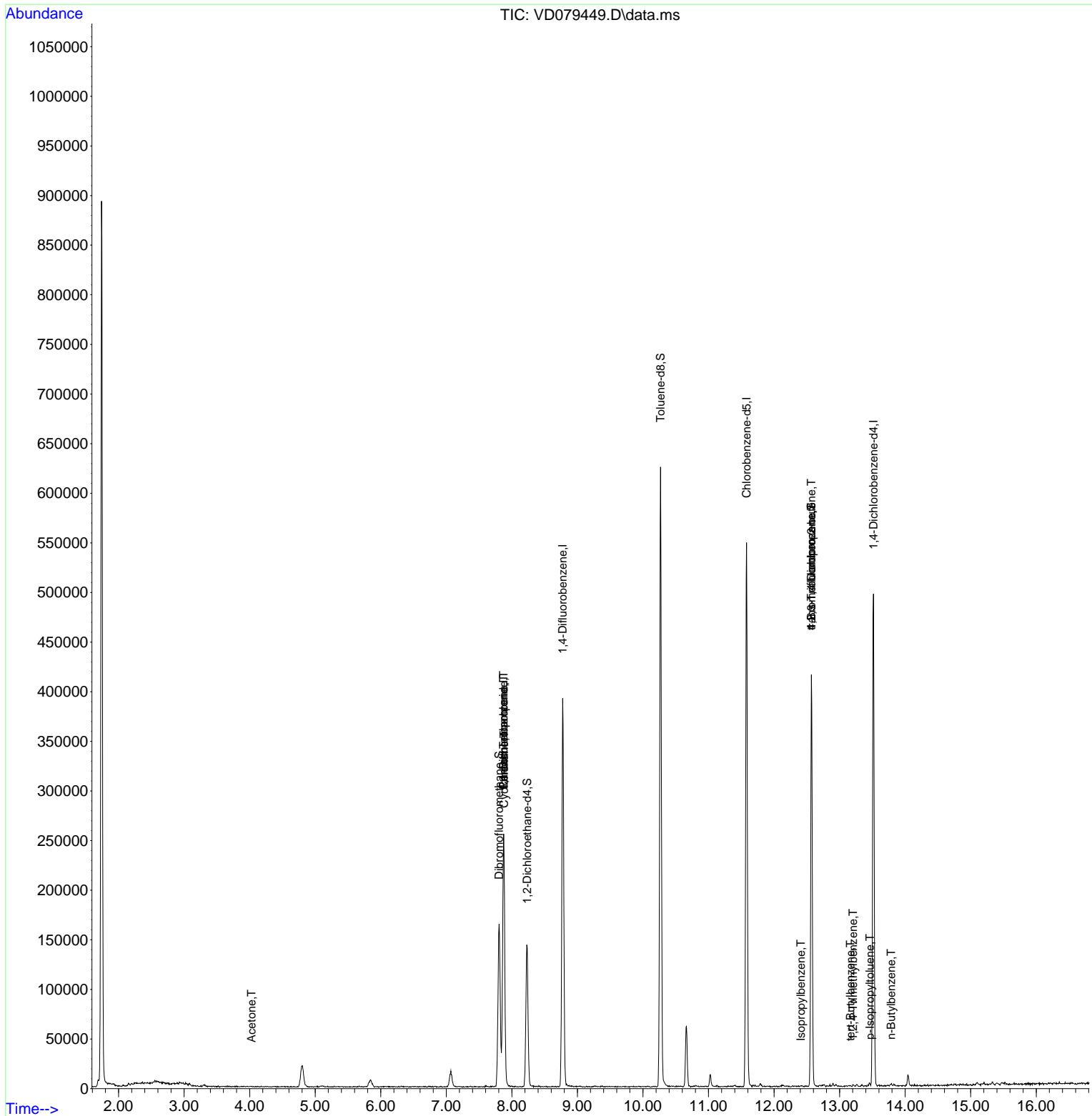
Compound	R.T.	QIon	Response	Conc	Units	Dev(Min)
-----						
Internal Standards						
1) Pentafluorobenzene	7.875	168	202109	50.000	ug/l	0.00
34) 1,4-Difluorobenzene	8.775	114	360252	50.000	ug/l	0.00
63) Chlorobenzene-d5	11.581	117	331646	50.000	ug/l	0.00
72) 1,4-Dichlorobenzene-d4	13.516	152	143472	50.000	ug/l	0.00
System Monitoring Compounds						
33) 1,2-Dichloroethane-d4	8.234	65	110882	54.004	ug/l	0.00
Spiked Amount	50.000	Range 50 - 163	Recovery	=	108.000%	
35) Dibromofluoromethane	7.805	113	119486	49.003	ug/l	0.00
Spiked Amount	50.000	Range 54 - 147	Recovery	=	98.000%	
50) Toluene-d8	10.269	98	432208	45.644	ug/l	0.00
Spiked Amount	50.000	Range 58 - 134	Recovery	=	91.280%	
62) 4-Bromofluorobenzene	12.569	95	116552	42.535	ug/l	0.00
Spiked Amount	50.000	Range 30 - 143	Recovery	=	85.060%	
Target Compounds						
						Qvalue
5) Bromomethane	2.705	94	970	Below Cal		100
11) Tert butyl alcohol	5.028	59	73	Below Cal	#	86
16) Acetone	4.028	43	638	1.599	ug/l #	37
20) Methylene Chloride	4.805	84	17544	Below Cal	#	81
31) Cyclohexane	7.881	56	4456	1.307	ug/l #	25
36) 1,1-Dichloropropene	7.875	75	15617	4.692	ug/l #	44
38) Carbon Tetrachloride	7.875	117	19626	5.610	ug/l #	18
73) Isopropylbenzene	12.410	105	250	3.649	ug/l #	48
76) 1,2,3-Trichloropropane	12.569	75	56138	44.764	ug/l #	100
81) trans-1,4-Dichloro-2-b...	12.569	75	56138	85.377	ug/l #	19
83) tert-Butylbenzene	13.163	119	487	3.686	ug/l #	74
84) 1,2,4-Trimethylbenzene	13.204	105	931	3.525	ug/l	81
86) p-Isopropyltoluene	13.463	119	770	3.957	ug/l	94
89) n-Butylbenzene	13.787	91	1499	3.931	ug/l	86
-----						

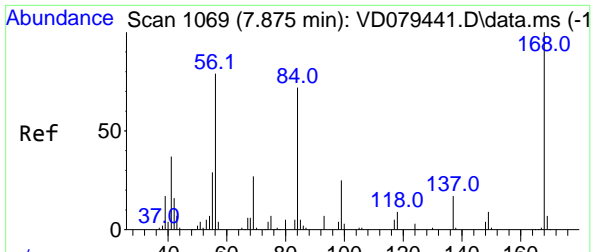
(#) = qualifier out of range (m) = manual integration (+) = signals summed

Data Path : Z:\voasrv\HPCHEM1\MSVOA\_D\Data\VD073024\  
 Data File : VD079449.D  
 Acq On : 30 Jul 2024 10:23  
 Operator : RP/MD  
 Sample : VD0730SBL01  
 Misc : 5.00G/5.0ml/MSVOA\_D/SOIL  
 ALS Vial : 4 Sample Multiplier: 1

Instrument :  
 MSVOA\_D  
 ClientSampleId :  
 VD0730SBL01

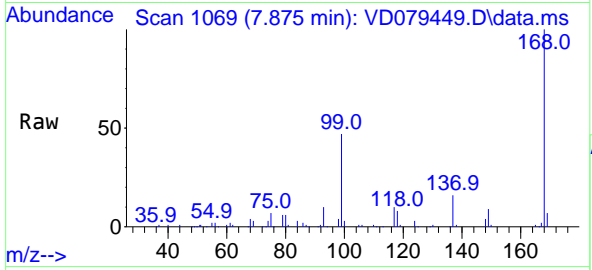
Quant Time: Jul 30 15:41:04 2024  
 Quant Method : Z:\voasrv\HPCHEM1\MSVOA\_D\Method\82D072924S.M  
 Quant Title : SW846 8260  
 QLast Update : Tue Jul 30 03:50:47 2024  
 Response via : Initial Calibration



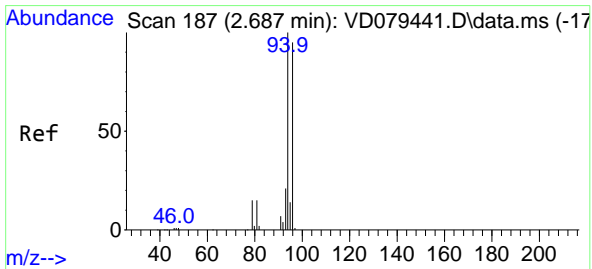
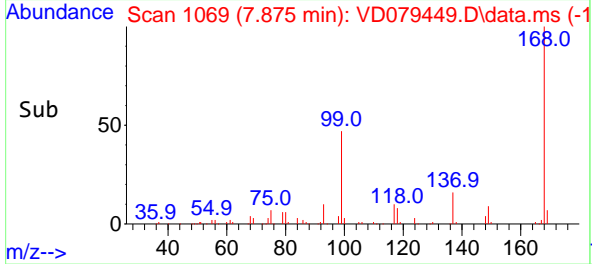
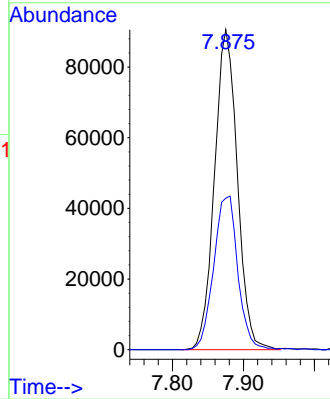


#1  
 Pentafluorobenzene  
 Concen: 50.000 ug/l  
 RT: 7.875 min Scan# 10  
 Delta R.T. 0.000 min  
 Lab File: VD079449.D  
 Acq: 30 Jul 2024 10:23

Instrument :  
 MSVOA\_D  
 ClientSampleId :  
 VD0730SBL01

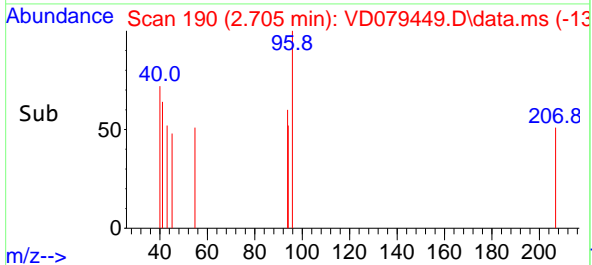
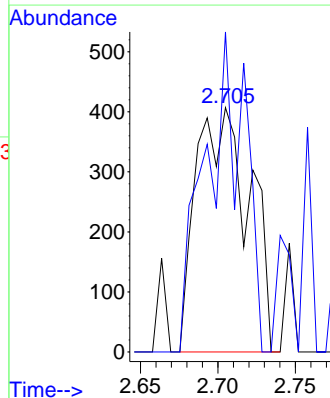
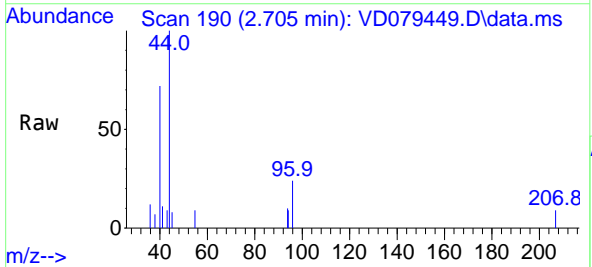


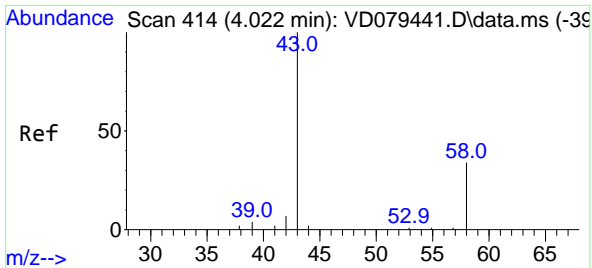
Tgt Ion:168 Resp: 202109  
 Ion Ratio Lower Upper  
 168 100  
 99 47.4 41.1 61.7



#5  
 Bromomethane  
 Concen: Below Cal  
 RT: 2.705 min Scan# 190  
 Delta R.T. 0.018 min  
 Lab File: VD079449.D  
 Acq: 30 Jul 2024 10:23

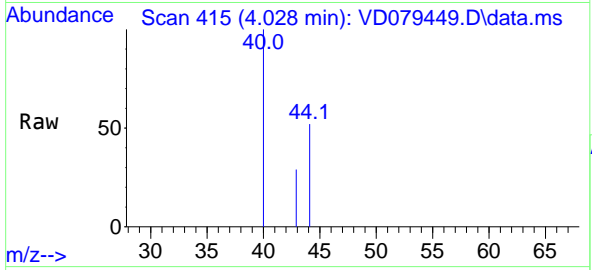
Tgt Ion: 94 Resp: 970  
 Ion Ratio Lower Upper  
 94 100  
 96 96.3 76.9 115.3



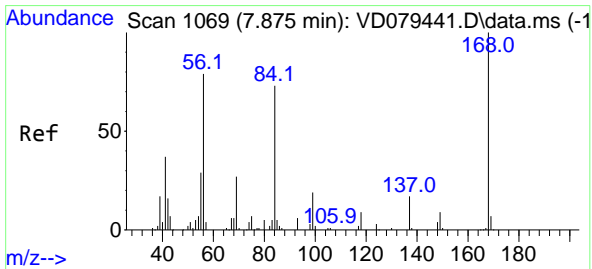
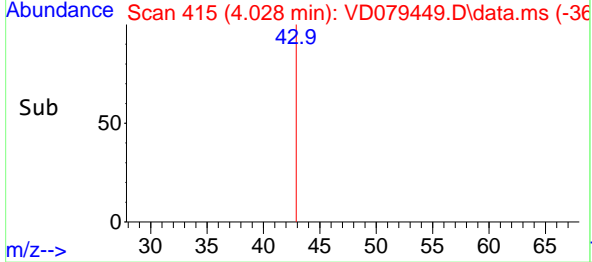
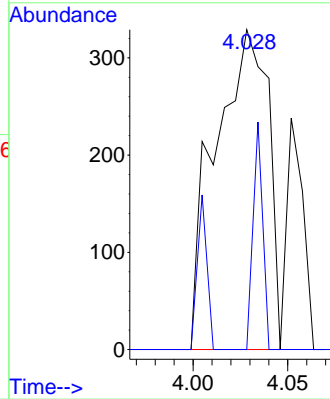


#16  
 Acetone  
 Concen: 1.599 ug/l  
 RT: 4.028 min Scan# 41  
 Delta R.T. 0.006 min  
 Lab File: VD079449.D  
 Acq: 30 Jul 2024 10:23

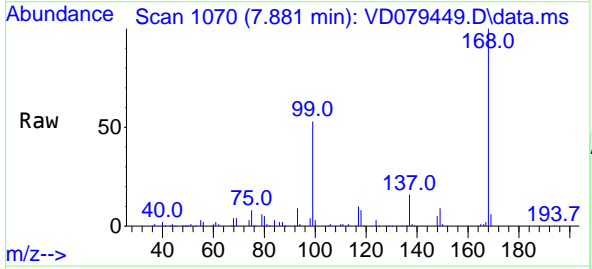
Instrument :  
 MSVOA\_D  
 ClientSampleId :  
 VD0730SBL01



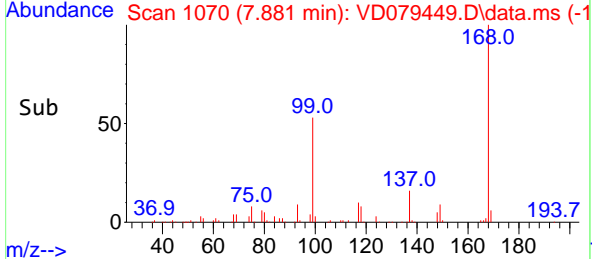
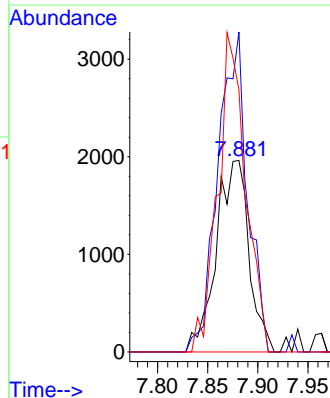
Tgt Ion: 43 Resp: 638  
 Ion Ratio Lower Upper  
 43 100  
 58 0.0 30.4 45.6#

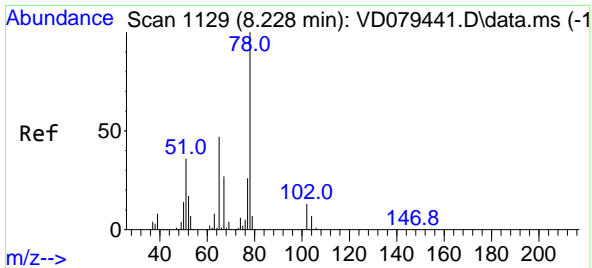


#31  
 Cyclohexane  
 Concen: 1.307 ug/l  
 RT: 7.881 min Scan# 1070  
 Delta R.T. 0.000 min  
 Lab File: VD079449.D  
 Acq: 30 Jul 2024 10:23



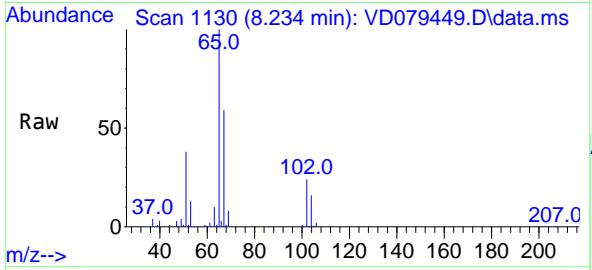
Tgt Ion: 56 Resp: 4456  
 Ion Ratio Lower Upper  
 56 100  
 69 167.1 28.0 42.0#  
 84 137.0 87.4 131.0#



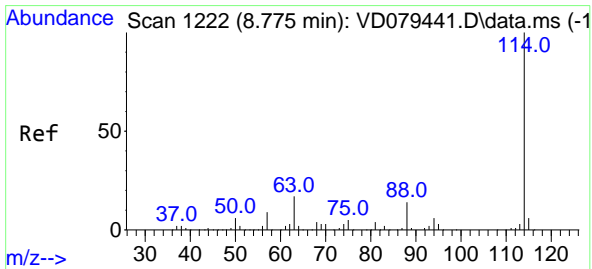
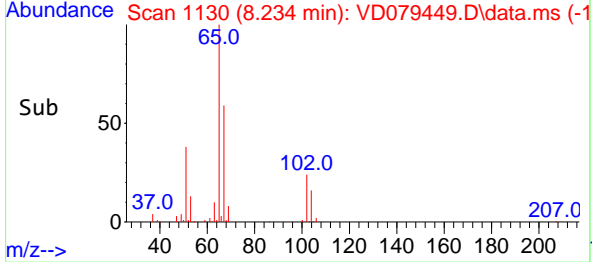
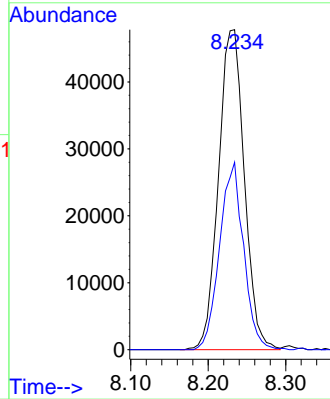


#33  
 1,2-Dichloroethane-d4  
 Concen: 54.004 ug/l  
 RT: 8.234 min Scan# 1129  
 Delta R.T. 0.006 min  
 Lab File: VD079449.D  
 Acq: 30 Jul 2024 10:23

Instrument : MSVOA\_D  
 ClientSampleId : VD0730SBL01

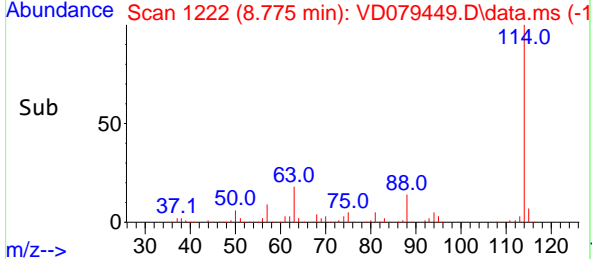
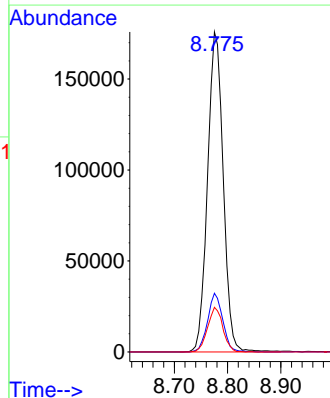
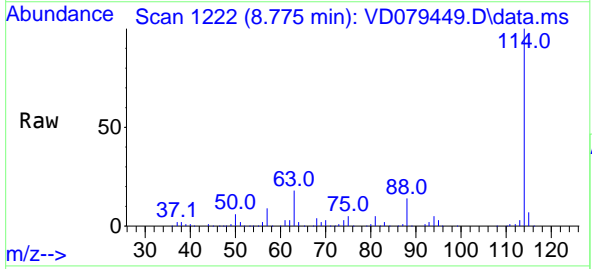


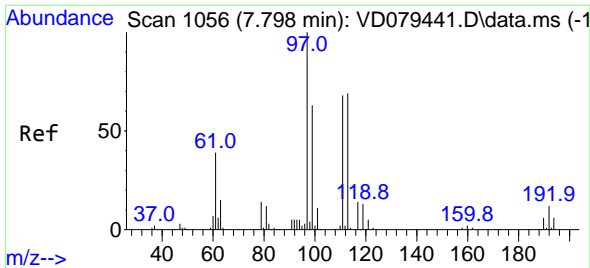
Tgt Ion: 65 Resp: 110882  
 Ion Ratio Lower Upper  
 65 100  
 67 54.4 0.0 111.0



#34  
 1,4-Difluorobenzene  
 Concen: 50.000 ug/l  
 RT: 8.775 min Scan# 1222  
 Delta R.T. 0.000 min  
 Lab File: VD079449.D  
 Acq: 30 Jul 2024 10:23

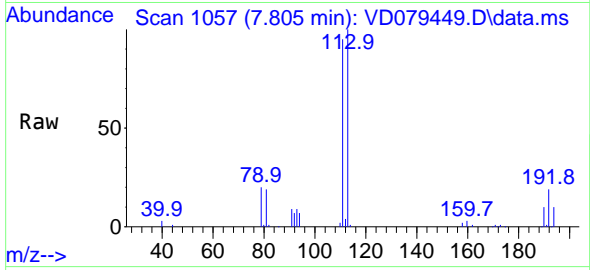
Tgt Ion: 114 Resp: 360252  
 Ion Ratio Lower Upper  
 114 100  
 63 18.3 0.0 34.0  
 88 13.9 0.0 27.2



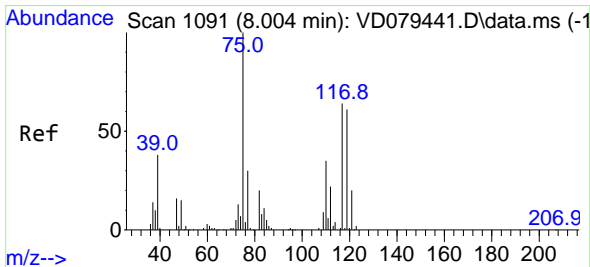
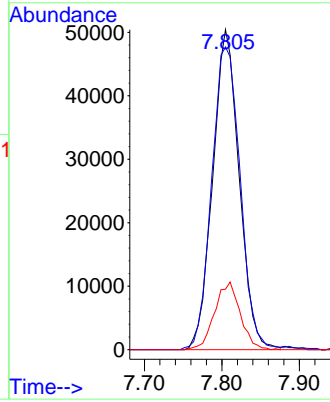
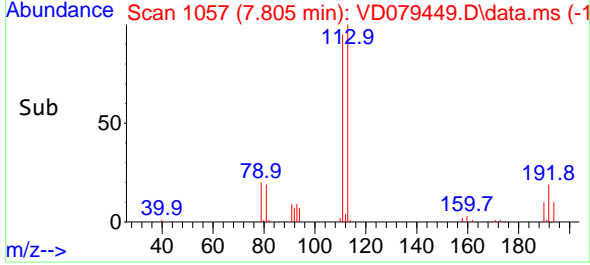


#35  
 Dibromofluoromethane  
 Concen: 49.003 ug/l  
 RT: 7.805 min Scan# 1069  
 Delta R.T. 0.000 min  
 Lab File: VD079449.D  
 Acq: 30 Jul 2024 10:23

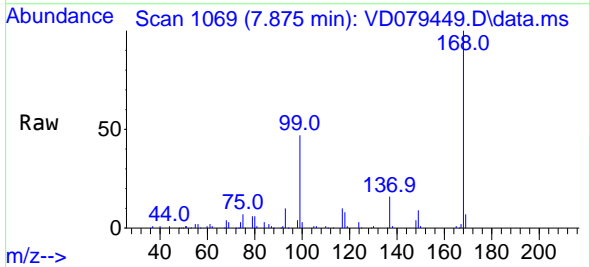
Instrument : MSVOA\_D  
 ClientSampleId : VD0730SBL01



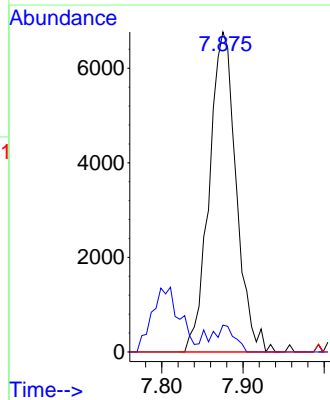
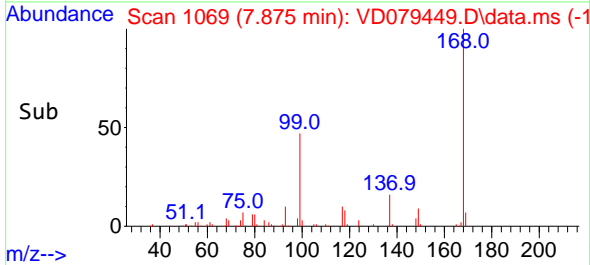
Tgt Ion: 113 Resp: 119486  
 Ion Ratio Lower Upper  
 113 100  
 111 102.7 84.0 126.0  
 192 20.5 15.4 23.0

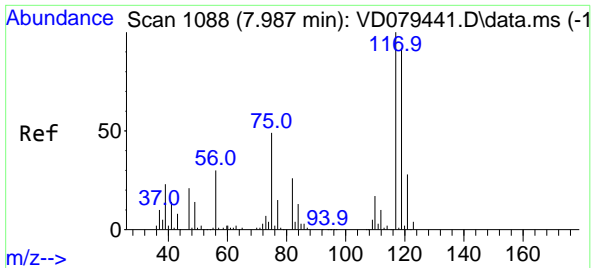


#36  
 1,1-Dichloropropene  
 Concen: 4.692 ug/l  
 RT: 7.875 min Scan# 1069  
 Delta R.T. -0.135 min  
 Lab File: VD079449.D  
 Acq: 30 Jul 2024 10:23



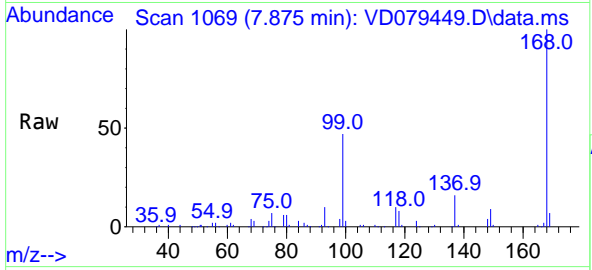
Tgt Ion: 75 Resp: 15617  
 Ion Ratio Lower Upper  
 75 100  
 110 5.9 19.6 58.7#  
 77 0.0 26.1 39.1#





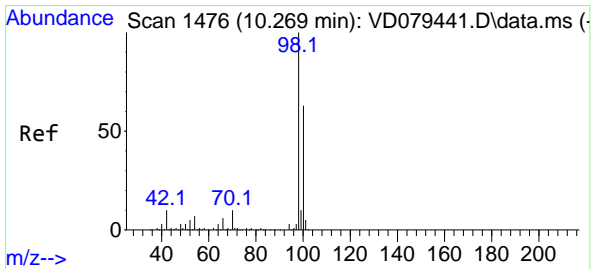
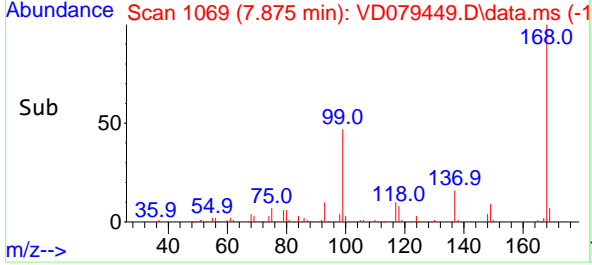
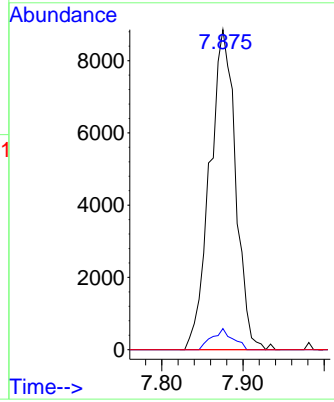
#38  
 Carbon Tetrachloride  
 Concen: 5.610 ug/l  
 RT: 7.875 min Scan# 1069  
 Delta R.T. -0.112 min  
 Lab File: VD079449.D  
 Acq: 30 Jul 2024 10:23

Instrument : MSVOA\_D  
 ClientSampleId : VD0730SBL01



Tgt Ion: 117 Resp: 19626

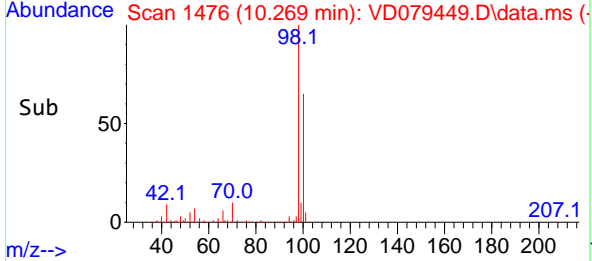
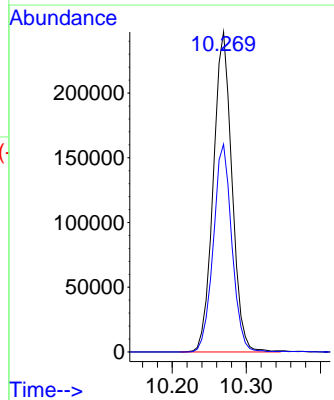
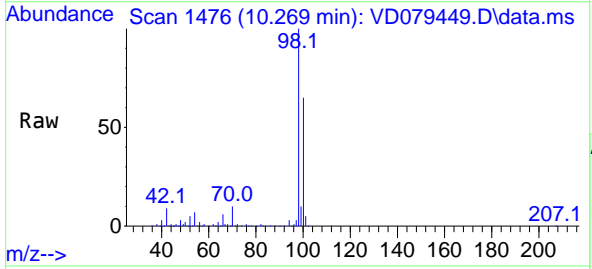
Ion	Ratio	Lower	Upper
117	100		
119	6.6	75.4	113.0#
121	0.0	25.0	37.4#

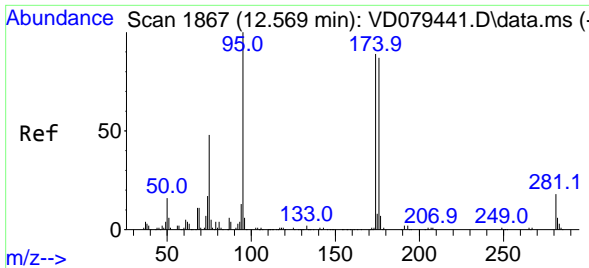


#50  
 Toluene-d8  
 Concen: 45.644 ug/l  
 RT: 10.269 min Scan# 1476  
 Delta R.T. 0.006 min  
 Lab File: VD079449.D  
 Acq: 30 Jul 2024 10:23

Tgt Ion: 98 Resp: 432208

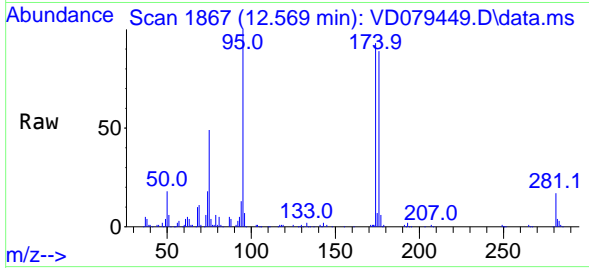
Ion	Ratio	Lower	Upper
98	100		
100	64.5	51.6	77.4





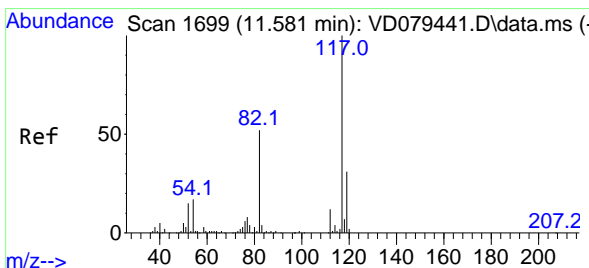
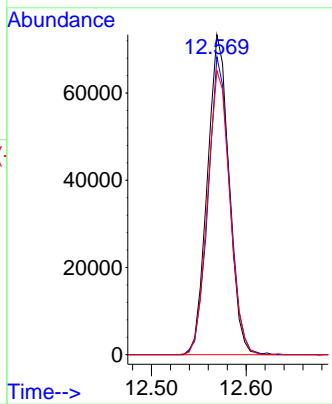
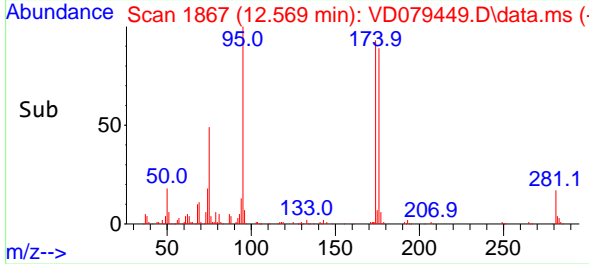
#62  
 4-Bromofluorobenzene  
 Concen: 42.535 ug/l  
 RT: 12.569 min Scan# 1867  
 Delta R.T. 0.000 min  
 Lab File: VD079449.D  
 Acq: 30 Jul 2024 10:23

Instrument : MSVOA\_D  
 ClientSampleId : VD0730SBL01

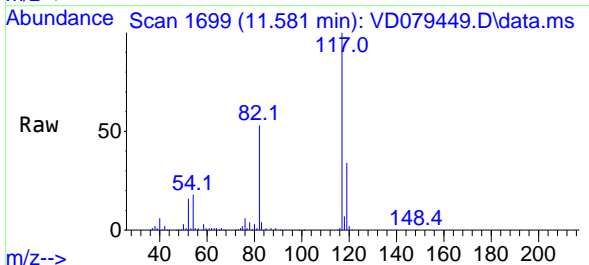


Tgt Ion: 95 Resp: 116552

Ion	Ratio	Lower	Upper
95	100		
174	93.5	0.0	195.4
176	91.5	0.0	192.6

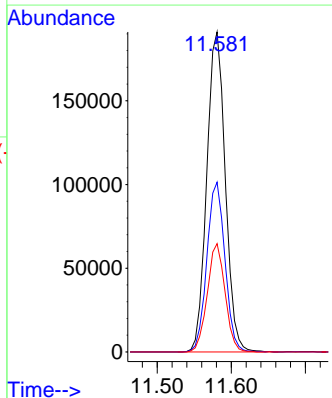
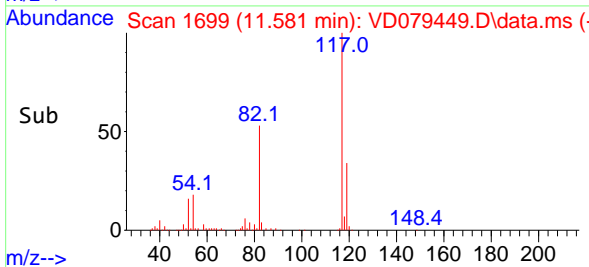


#63  
 Chlorobenzene-d5  
 Concen: 50.000 ug/l  
 RT: 11.581 min Scan# 1699  
 Delta R.T. 0.000 min  
 Lab File: VD079449.D  
 Acq: 30 Jul 2024 10:23

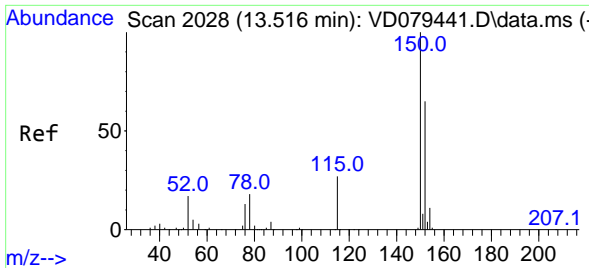


Tgt Ion: 117 Resp: 331646

Ion	Ratio	Lower	Upper
117	100		
82	53.0	39.8	59.6
119	33.8	25.7	38.5

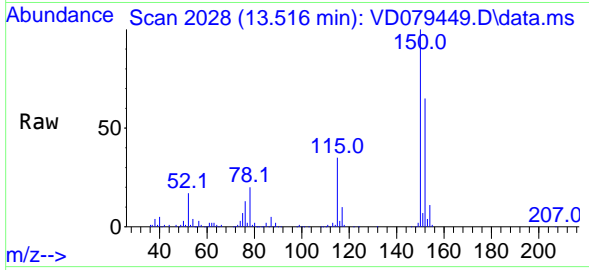




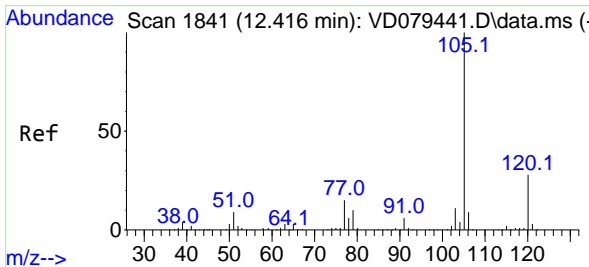
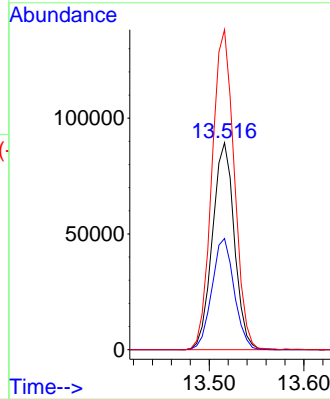
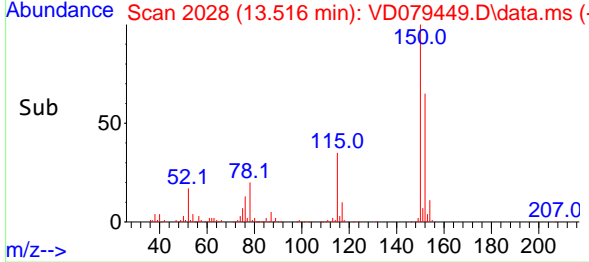


#72  
 1,4-Dichlorobenzene-d4  
 Concen: 50.000 ug/l  
 RT: 13.516 min Scan# 2028  
 Delta R.T. 0.006 min  
 Lab File: VD079449.D  
 Acq: 30 Jul 2024 10:23

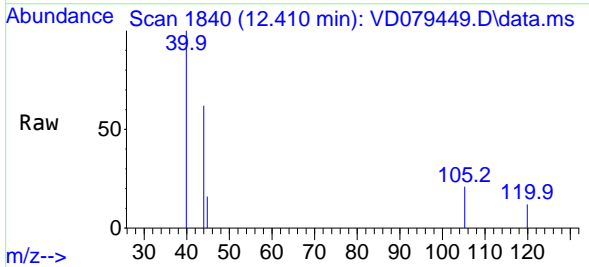
Instrument :  
 MSVOA\_D  
 ClientSampleId :  
 VD0730SBL01



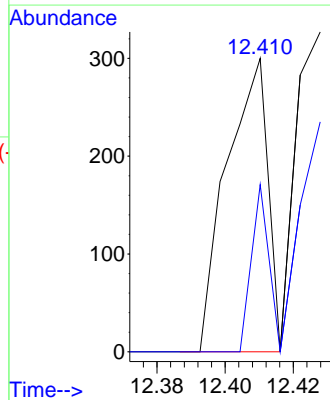
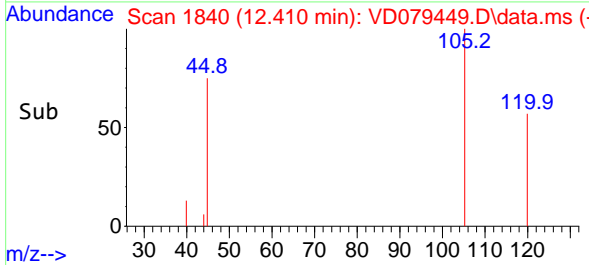
Tgt Ion:152 Resp: 143472  
 Ion Ratio Lower Upper  
 152 100  
 115 54.7 26.5 79.5  
 150 157.3 0.0 341.6

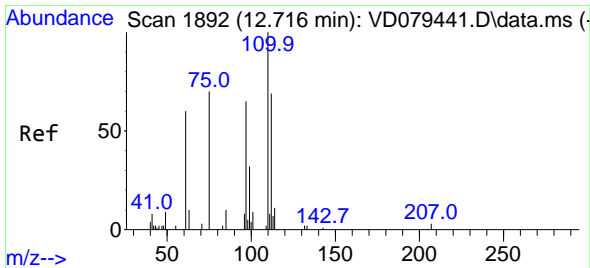


#73  
 Isopropylbenzene  
 Concen: 3.649 ug/l  
 RT: 12.410 min Scan# 1840  
 Delta R.T. -0.006 min  
 Lab File: VD079449.D  
 Acq: 30 Jul 2024 10:23



Tgt Ion:105 Resp: 250  
 Ion Ratio Lower Upper  
 105 100  
 120 0.0 13.6 40.7#

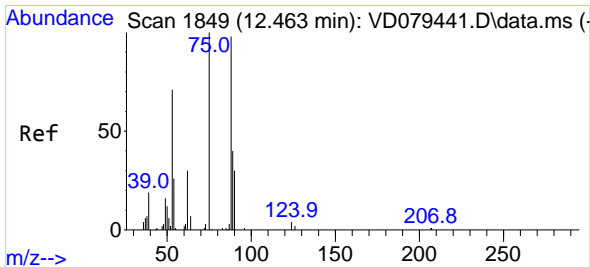
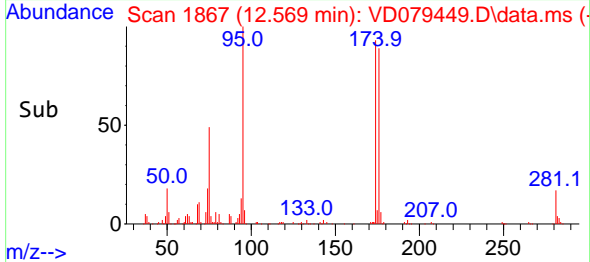
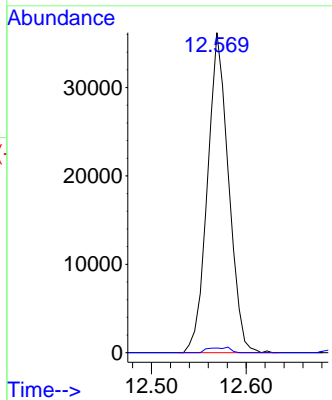
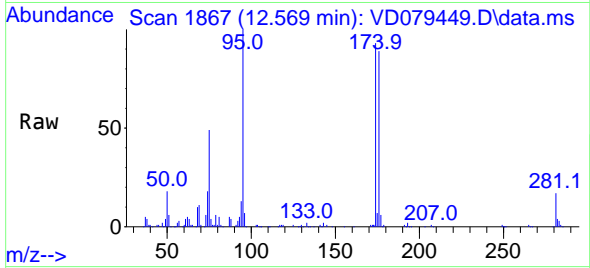




#76  
 1,2,3-Trichloropropane  
 Concen: 44.764 ug/l  
 RT: 12.569 min Scan# 1867  
 Delta R.T. -0.153 min  
 Lab File: VD079449.D  
 Acq: 30 Jul 2024 10:23

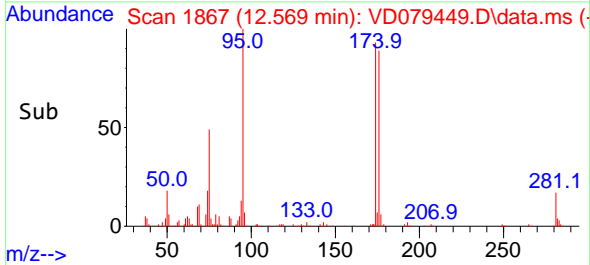
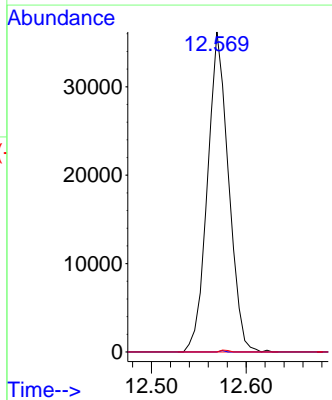
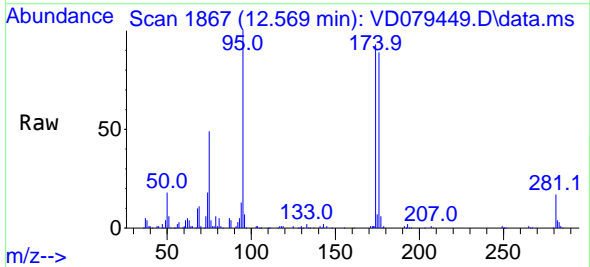
Instrument : MSVOA\_D  
 ClientSampleId : VD0730SBL01

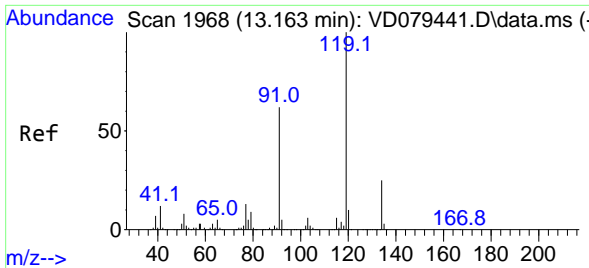
Tgt Ion: 75 Resp: 56138  
 Ion Ratio Lower Upper  
 75 100  
 77 1.7 0.0 0.0#



#81  
 trans-1,4-Dichloro-2-butene  
 Concen: 85.377 ug/l  
 RT: 12.569 min Scan# 1867  
 Delta R.T. 0.100 min  
 Lab File: VD079449.D  
 Acq: 30 Jul 2024 10:23

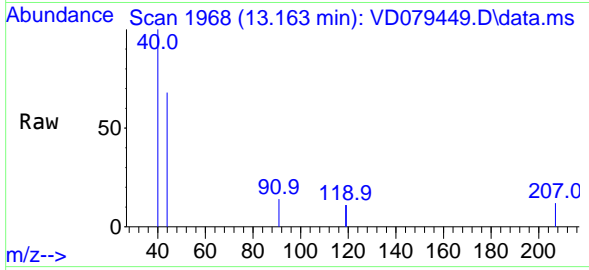
Tgt Ion: 75 Resp: 56138  
 Ion Ratio Lower Upper  
 75 100  
 53 0.1 61.4 92.2#  
 89 0.2 35.4 53.0#





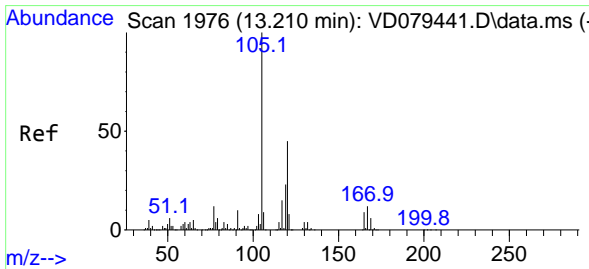
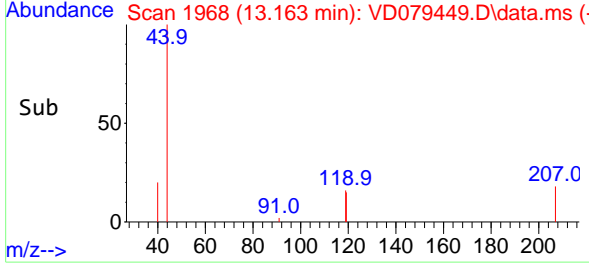
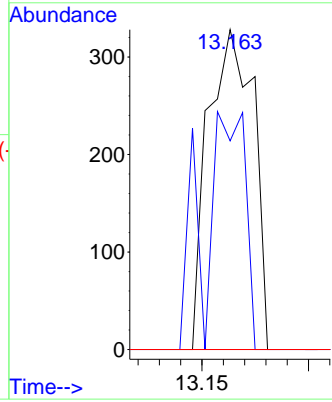
#83  
 tert-Butylbenzene  
 Concen: 3.686 ug/l  
 RT: 13.163 min Scan# 1968  
 Delta R.T. 0.000 min  
 Lab File: VD079449.D  
 Acq: 30 Jul 2024 10:23

Instrument : MSVOA\_D  
 ClientSampleId : VD0730SBL01



Tgt Ion:119 Resp: 487

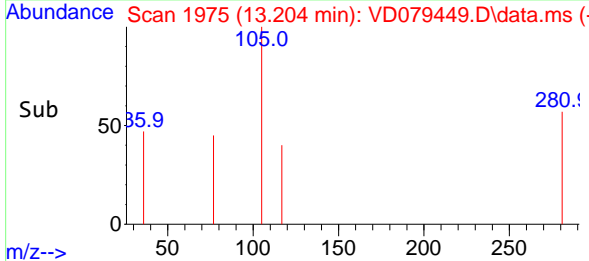
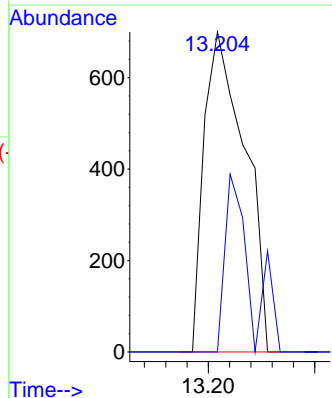
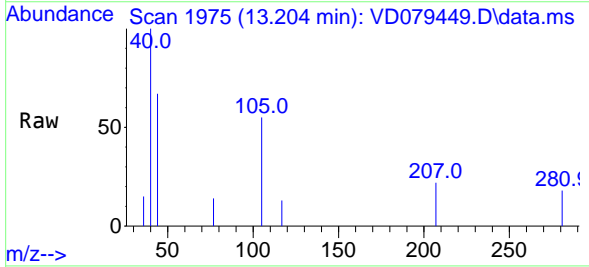
Ion	Ratio	Lower	Upper
119	100		
91	67.1	28.2	84.7
134	0.0	13.4	40.1#

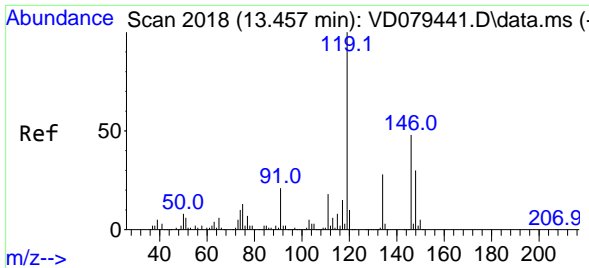


#84  
 1,2,4-Trimethylbenzene  
 Concen: 3.525 ug/l  
 RT: 13.204 min Scan# 1975  
 Delta R.T. 0.000 min  
 Lab File: VD079449.D  
 Acq: 30 Jul 2024 10:23

Tgt Ion:105 Resp: 931

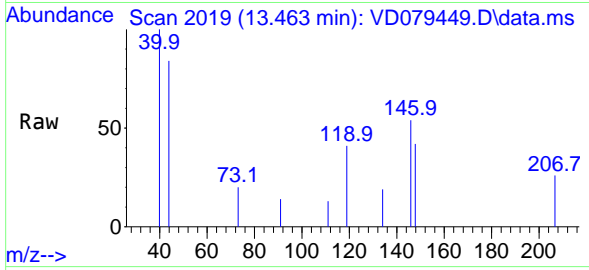
Ion	Ratio	Lower	Upper
105	100		
120	34.3	23.6	71.0



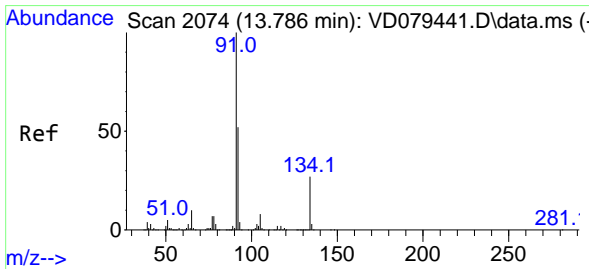
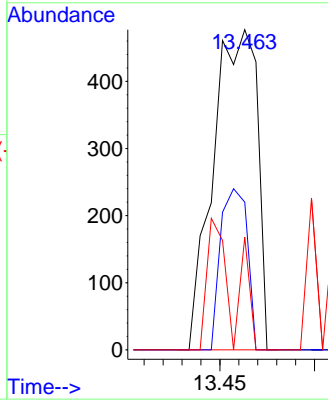
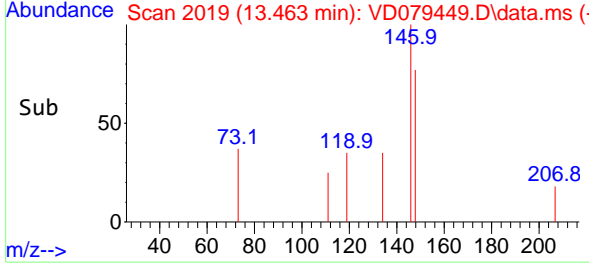


#86  
 p-Isopropyltoluene  
 Concen: 3.957 ug/l  
 RT: 13.463 min Scan# 2018  
 Delta R.T. 0.006 min  
 Lab File: VD079449.D  
 Acq: 30 Jul 2024 10:23

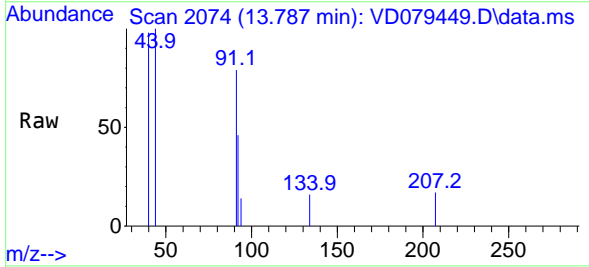
Instrument :  
 MSVOA\_D  
 ClientSampleId :  
 VD0730SBL01



Tgt Ion:119 Resp: 770  
 Ion Ratio Lower Upper  
 119 100  
 134 30.5 13.7 41.1  
 91 24.2 10.7 32.1



#89  
 n-Butylbenzene  
 Concen: 3.931 ug/l  
 RT: 13.787 min Scan# 2074  
 Delta R.T. 0.006 min  
 Lab File: VD079449.D  
 Acq: 30 Jul 2024 10:23



Tgt Ion: 91 Resp: 1499  
 Ion Ratio Lower Upper  
 91 100  
 92 58.0 25.7 77.0  
 134 15.7 13.6 40.8

