

Data Path : Z:\voasrv\HPCHEM1\MSVOA\_D\Data\VD073024\  
 Data File : VD079452.D  
 Acq On : 30 Jul 2024 12:13  
 Operator : RP/MD  
 Sample : P3367-01  
 Misc : 5.06G/5.0ml/MSVOA\_D/SOIL/B  
 ALS Vial : 7 Sample Multiplier: 1

Instrument :  
 MSVOA\_D  
 ClientSampleId :  
 TR-06-07252024

Integration Parameters: RTEINT.P  
 Integrator: RTE  
 Smoothing : ON Filtering: 5  
 Sampling : 1 Min Area: 3 % of largest Peak  
 Start Thrs: 0.2 Max Peaks: 100  
 Stop Thrs : 0 Peak Location: TOP

If leading or trailing edge < 100 prefer < Baseline drop else tangent >  
 Peak separation: 5

Method : Z:\voasrv\HPCHEM1\MSVOA\_D\Method\82D072924S.M  
 Title : SW846 8260

Signal : TIC: VD079452.D\data.ms

peak #	R.T. min	first scan	max scan	last scan	PK TY	peak height	corr. area	corr. % max.	% of total
1	1.740	20	26	34	rVV	698666	1146547	100.00%	16.394%
2	4.799	535	546	559	rVB2	65192	204318	17.82%	2.922%
3	5.828	714	721	732	rBV7	6402	20553	1.79%	0.294%
4	7.063	923	931	938	rBV2	5348	12809	1.12%	0.183%
5	7.804	1046	1057	1063	rBV	168826	407603	35.55%	5.828%
6	7.875	1063	1069	1084	rVB	270075	619394	54.02%	8.857%
7	8.228	1121	1129	1139	rBV2	150143	334590	29.18%	4.784%
8	8.775	1212	1222	1237	rBV	416938	839780	73.24%	12.008%
9	10.269	1467	1476	1485	rBV	620927	1101474	96.07%	15.750%
10	10.657	1537	1542	1549	rVB2	8691	15603	1.36%	0.223%
11	11.581	1691	1699	1708	rBV	529221	929651	81.08%	13.293%
12	12.569	1859	1867	1875	rBV	347560	577707	50.39%	8.261%
13	13.516	2021	2028	2036	rBV	454478	730801	63.74%	10.450%
14	14.763	2235	2240	2246	rBV6	6441	12736	1.11%	0.182%
15	15.328	2330	2336	2341	rBV5	7448	12748	1.11%	0.182%
16	15.828	2417	2421	2426	rVB7	7999	13090	1.14%	0.187%
17	16.327	2502	2506	2512	rVV7	6601	14094	1.23%	0.202%

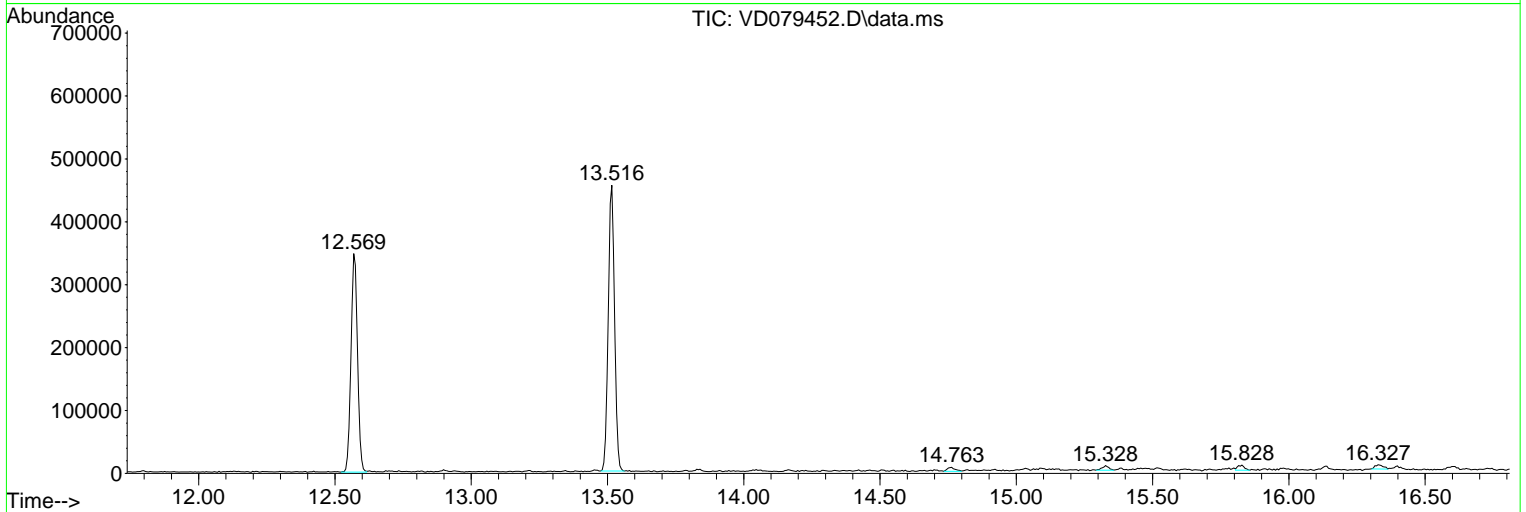
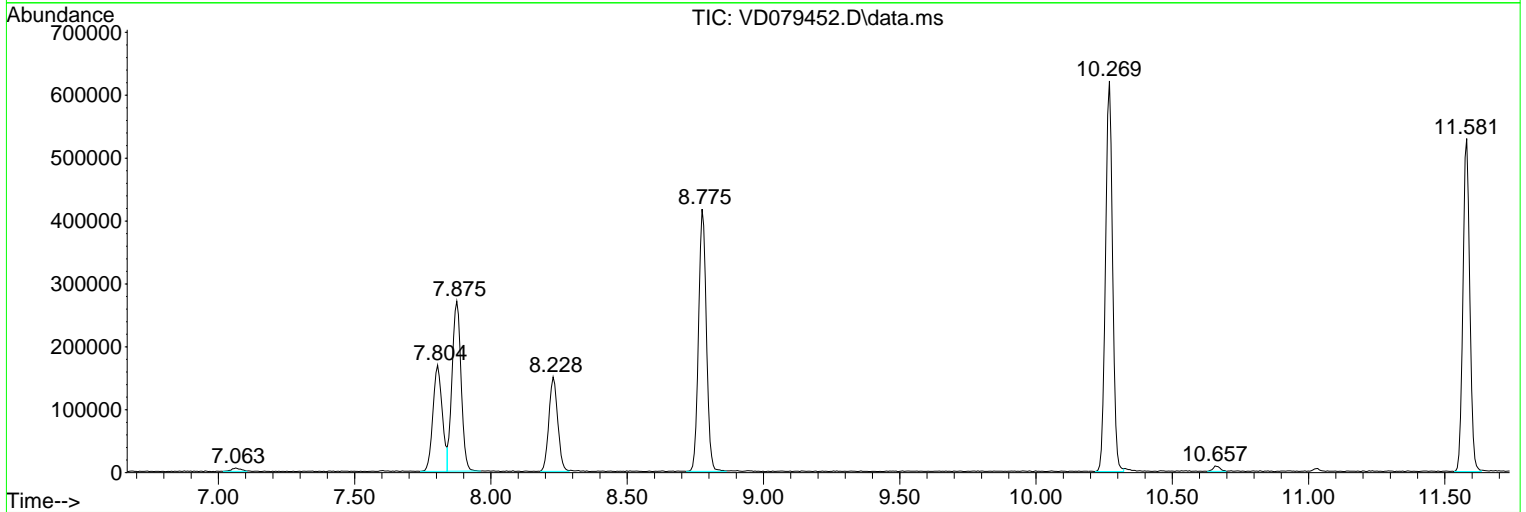
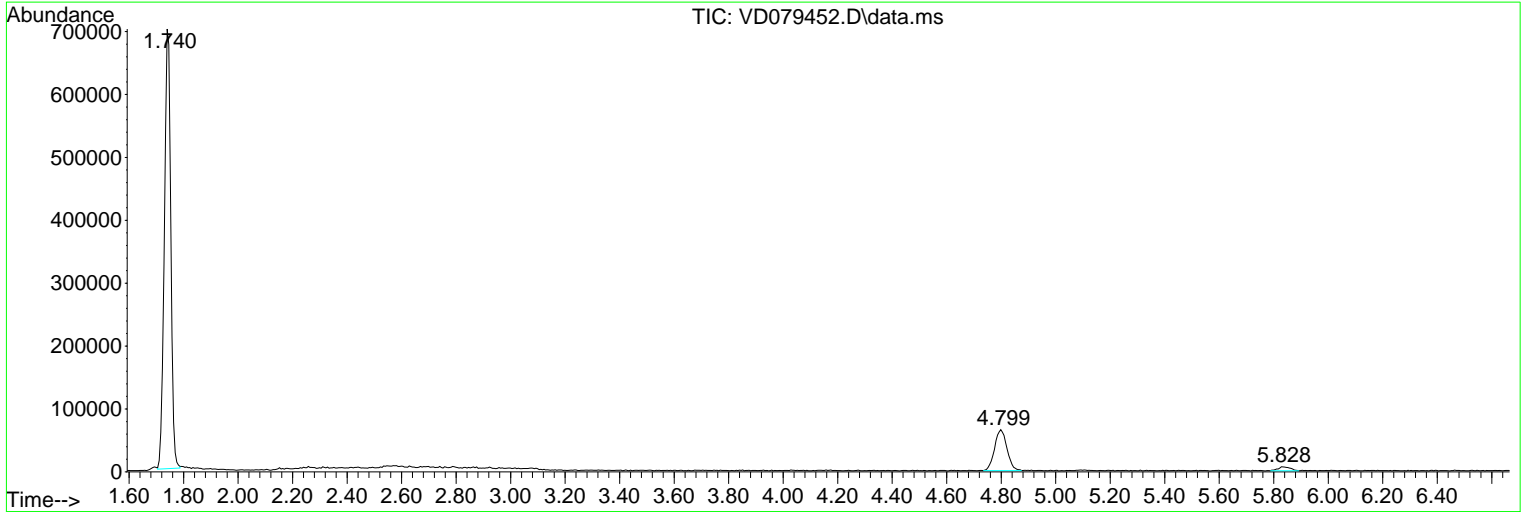
Sum of corrected areas: 6993498

Data Path : Z:\voasrv\HPCHEM1\MSVOA\_D\Data\VD073024\  
 Data File : VD079452.D  
 Acq On : 30 Jul 2024 12:13  
 Operator : RP/MD  
 Sample : P3367-01  
 Misc : 5.06G/5.0ml/MSVOA\_D/SOIL/B  
 ALS Vial : 7 Sample Multiplier: 1

Instrument :  
 MSVOA\_D  
 ClientSampleId :  
 TR-06-07252024

Quant Method : Z:\voasrv\HPCHEM1\MSVOA\_D\Method\82D072924S.M  
 Quant Title : SW846 8260

TIC Library : C:\Database\NIST20.L  
 TIC Integration Parameters: LSCINT.P



Data Path : Z:\voasrv\HPCHEM1\MSVOA\_D\Data\VD073024\  
Data File : VD079452.D  
Acq On : 30 Jul 2024 12:13  
Operator : RP/MD  
Sample : P3367-01  
Misc : 5.06G/5.0ml/MSVOA\_D/SOIL/B  
ALS Vial : 7 Sample Multiplier: 1

Instrument :  
MSVOA\_D  
ClientSampleId :  
TR-06-07252024

Quant Method : Z:\voasrv\HPCHEM1\MSVOA\_D\Method\82D072924S.M  
Quant Title : SW846 8260

TIC Library : C:\Database\NIST20.L  
TIC Integration Parameters: LSCINT.P

No Library Search Compounds Detected

\*\*\*\*\*

Data Path : Z:\voasrv\HPCHEM1\MSVOA\_D\Data\VD073024\  
Data File : VD079452.D  
Acq On : 30 Jul 2024 12:13  
Operator : RP/MD  
Sample : P3367-01  
Misc : 5.06G/5.0ml/MSVOA\_D/SOIL/B  
ALS Vial : 7 Sample Multiplier: 1

Instrument :  
MSVOA\_D  
ClientSampleId :  
TR-06-07252024

Quant Method : Z:\voasrv\HPCHEM1\MSVOA\_D\Method\82D072924S.M  
Quant Title : SW846 8260

TIC Library : C:\Database\NIST20.L  
TIC Integration Parameters: LSCINT.P

TIC Top Hit name	RT	EstConc	Units	Response	--Internal Standard--			
					#	RT	Resp	Conc

---