

Data Path : Z:\voasrv\HPCHEM1\MSVOA_D\Data\VD073124\
 Data File : VD079513.D
 Acq On : 01 Aug 2024 00:52
 Operator : RP/MD
 Sample : P3374-11
 Misc : 8.44G/5.0ml/MSVOA_D/SOIL/A
 ALS Vial : 33 Sample Multiplier: 1

Instrument :
 MSVOA_D
 ClientSampleId :
 S-862-K2-SO-13.5-14-072024

Integration Parameters: RTEINT.P

Integrator: RTE
 Smoothing : ON Filtering: 5
 Sampling : 1 Min Area: 3 % of largest Peak
 Start Thrs: 0.2 Max Peaks: 100
 Stop Thrs : 0 Peak Location: TOP

If leading or trailing edge < 100 prefer < Baseline drop else tangent >
 Peak separation: 5

Method : Z:\voasrv\HPCHEM1\MSVOA_D\Method\82D072924S.M
 Title : SW846 8260

Signal : TIC: VD079513.D\data.ms

peak #	R.T. min	first scan	max scan	last scan	PK TY	peak height	corr. area	corr. % max.	% of total
1	1.740	19	26	36	rBV	1114434	1707672	52.86%	14.390%
2	3.964	391	404	409	rBV6	12927	40716	1.26%	0.343%
3	4.799	534	546	560	rBV3	93446	294882	9.13%	2.485%
4	7.075	920	933	946	rBV	383673	1049610	32.49%	8.845%
5	7.805	1046	1057	1063	rBV	173423	424044	13.13%	3.573%
6	7.875	1063	1069	1080	rVB	231568	525283	16.26%	4.426%
7	8.228	1120	1129	1139	rBV	156609	349769	10.83%	2.947%
8	8.775	1214	1222	1234	rBV	373499	758321	23.47%	6.390%
9	9.028	1255	1265	1281	rBV	1632621	3230403	100.00%	27.222%
10	10.269	1468	1476	1495	rBV	627689	1113805	34.48%	9.386%
11	10.810	1559	1568	1574	rBV	95741	173273	5.36%	1.460%
12	11.581	1691	1699	1709	rBV	500710	868652	26.89%	7.320%
13	12.569	1860	1867	1879	rBV2	385632	624914	19.34%	5.266%
14	13.516	2019	2028	2037	rBV	396303	660985	20.46%	5.570%
15	14.045	2110	2118	2123	rBV2	26761	44753	1.39%	0.377%

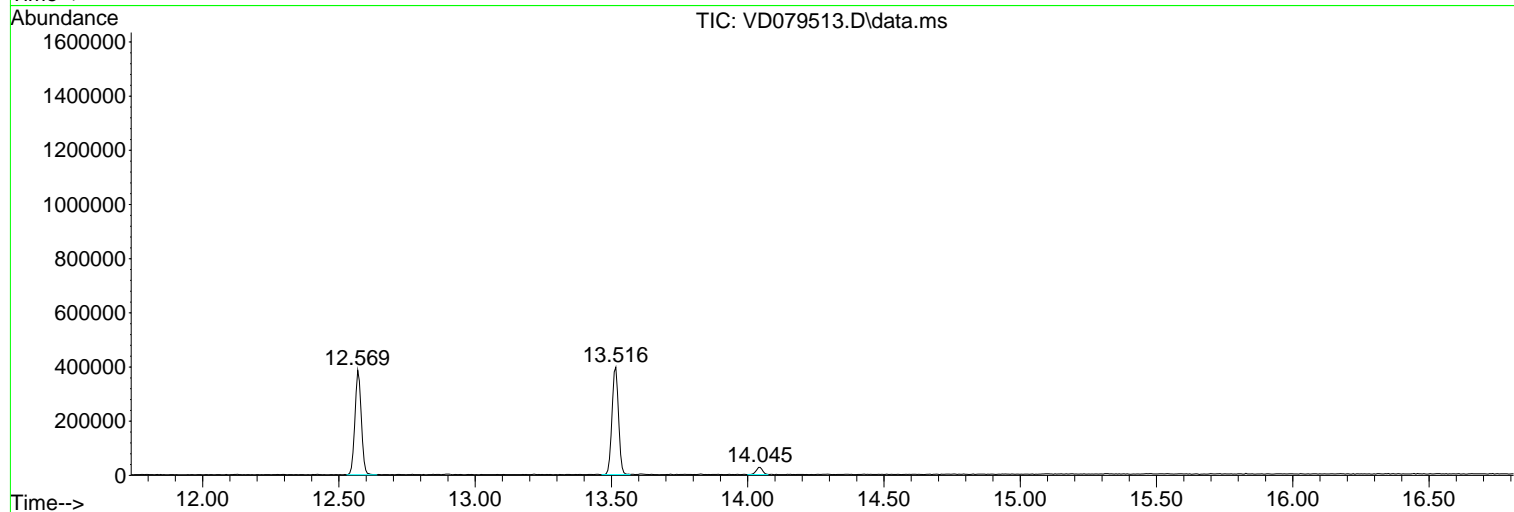
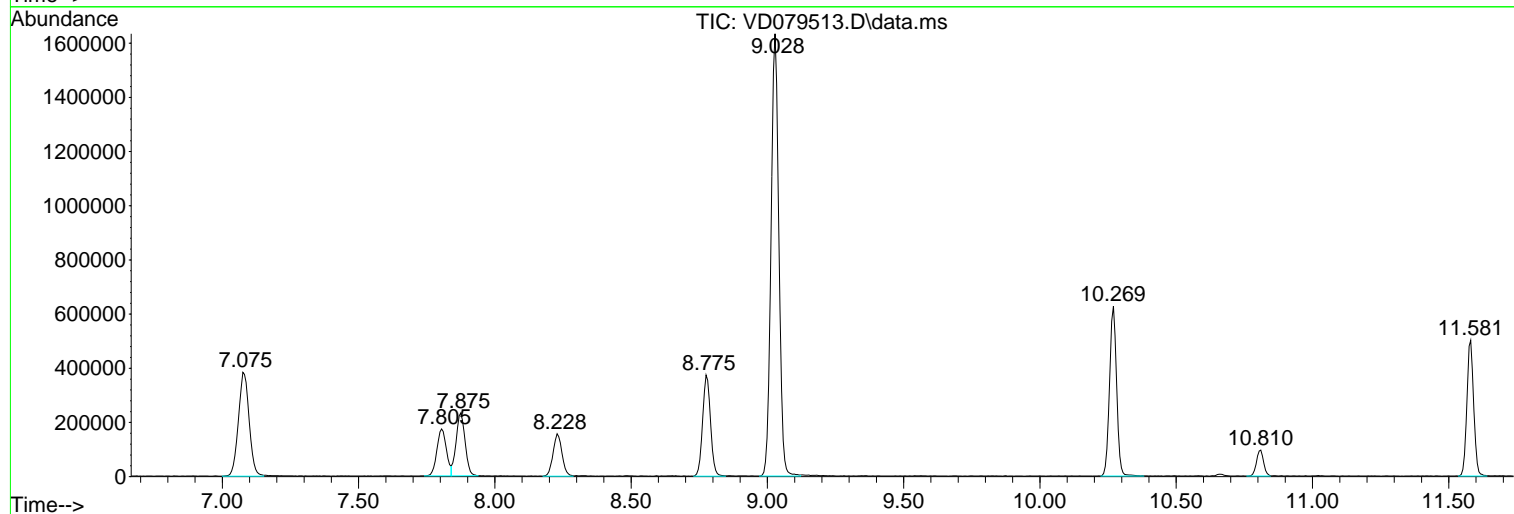
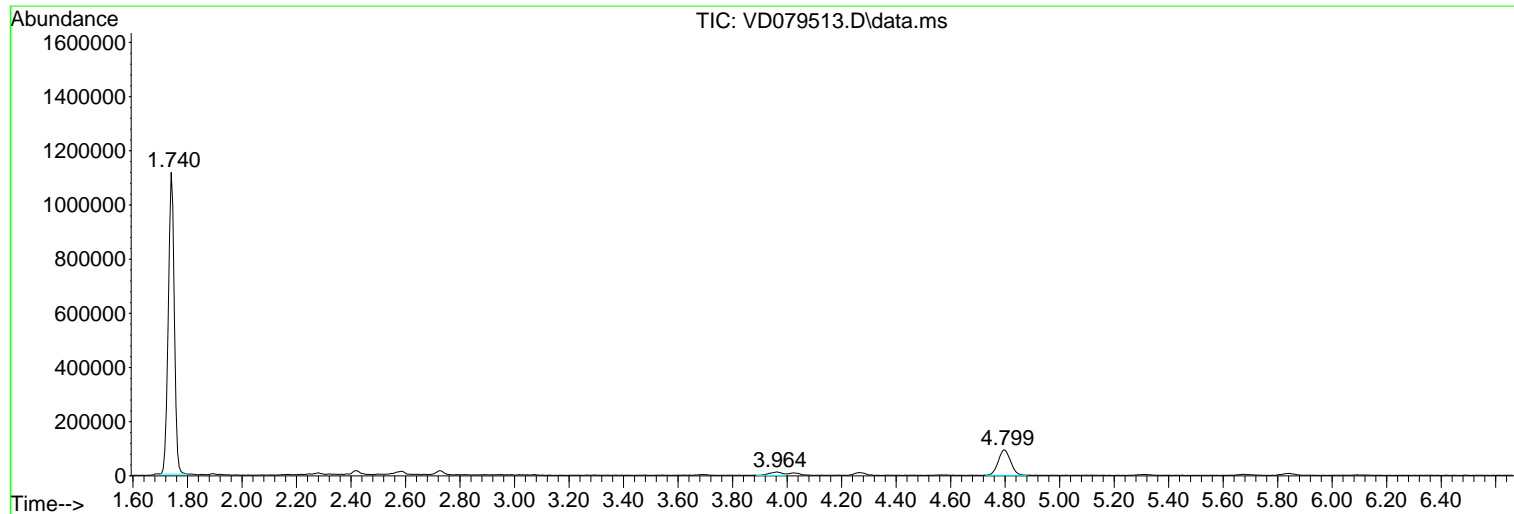
Sum of corrected areas: 11867082

Data Path : Z:\voasrv\HPCHEM1\MSVOA_D\Data\VD073124\
Data File : VD079513.D
Acq On : 01 Aug 2024 00:52
Operator : RP/MD
Sample : P3374-11
Misc : 8.44G/5.0ml/MSVOA_D/SOIL/A
ALS Vial : 33 Sample Multiplier: 1

Instrument :
MSVOA_D
ClientSampleId :
S-862-K2-SO-13.5-14-072024

Quant Method : Z:\voasrv\HPCHEM1\MSVOA_D\Method\82D072924S.M
Quant Title : SW846 8260

TIC Library : C:\Database\NIST20.L
TIC Integration Parameters: LSCINT.P



Library Search Compound Report

Data Path : Z:\voasrv\HPCHEM1\MSVOA_D\Data\VD073124\
Data File : VD079513.D
Acq On : 01 Aug 2024 00:52
Operator : RP/MD
Sample : P3374-11
Misc : 8.44G/5.0ml/MSVOA_D/SOIL/A
ALS Vial : 33 Sample Multiplier: 1

Instrument :
MSVOA_D
ClientSampleId :
S-862-K2-SO-13.5-14-072024

Quant Method : Z:\voasrv\HPCHEM1\MSVOA_D\Method\82D072924S.M
Quant Title : SW846 8260

TIC Library : C:\Database\NIST20.L
TIC Integration Parameters: LSCINT.P

No Library Search Compounds Detected

Data Path : Z:\voasrv\HPCHEM1\MSVOA_D\Data\VD073124\
Data File : VD079513.D
Acq On : 01 Aug 2024 00:52
Operator : RP/MD
Sample : P3374-11
Misc : 8.44G/5.0ml/MSVOA_D/SOIL/A
ALS Vial : 33 Sample Multiplier: 1

Instrument :
MSVOA_D
ClientSampleId :
S-862-K2-SO-13.5-14-072024

Quant Method : Z:\voasrv\HPCHEM1\MSVOA_D\Method\82D072924S.M
Quant Title : SW846 8260

TIC Library : C:\Database\NIST0.L
TIC Integration Parameters: LSCINT.P

TIC Top Hit name	RT	EstConc	Units	Response	--Internal Standard--			
					#	RT	Resp	Conc
