

Data Path : Z:\voasrv\HPCHEM1\MSVOA_D\Data\VD080724\
 Data File : VD079659.D
 Acq On : 08 Aug 2024 00:51
 Operator : RP/MD
 Sample : P3488-01
 Misc : 5.08G/5.0ml/MSVOA_D/SOIL/A
 ALS Vial : 29 Sample Multiplier: 1

Instrument :
 MSVOA_D
 ClientSampleId :

Quant Time: Aug 08 05:38:45 2024
 Quant Method : Z:\voasrv\HPCHEM1\MSVOA_D\Method\82D072924S.M
 Quant Title : SW846 8260
 QLast Update : Tue Jul 30 03:50:47 2024
 Response via : Initial Calibration

Compound	R.T.	QIon	Response	Conc	Units	Dev(Min)
Internal Standards						
1) Pentafluorobenzene	7.887	168	2213	50.000	ug/l	# 0.01
34) 1,4-Difluorobenzene	8.775	114	5104	50.000	ug/l	0.00
63) Chlorobenzene-d5	11.581	117	4752	50.000	ug/l	# 0.00
72) 1,4-Dichlorobenzene-d4	13.516	152	1713	50.000	ug/l	0.00
System Monitoring Compounds						
33) 1,2-Dichloroethane-d4	8.222	65	2958	131.572	ug/l	0.00
Spiked Amount	50.000	Range 50 - 163	Recovery	=	263.140%#	
35) Dibromofluoromethane	7.804	113	2686	77.751	ug/l	0.00
Spiked Amount	50.000	Range 54 - 147	Recovery	=	155.500%#	
50) Toluene-d8	10.269	98	5935	44.240	ug/l	0.00
Spiked Amount	50.000	Range 58 - 134	Recovery	=	88.480%	
62) 4-Bromofluorobenzene	12.569	95	1569	40.415	ug/l	0.00
Spiked Amount	50.000	Range 30 - 143	Recovery	=	80.840%	
Target Compounds						
						Qvalue
3) Chloromethane	2.152	50	79	2.473	ug/l	# 40
4) Vinyl Chloride	2.211	62	54	1.422	ug/l	# 42
5) Bromomethane	2.711	94	333	11.880	ug/l	# 20
6) Chloroethane	2.787	64	58	2.376	ug/l	# 44
14) Allyl chloride	4.622	41	55	1.742	ug/l	# 17
15) Acrylonitrile	5.299	53	67	12.564	ug/l	# 17
18) Methyl Acetate	4.569	43	60	4.423	ug/l	# 40
20) Methylene Chloride	4.793	84	772	12.965	ug/l	# 80
21) trans-1,2-Dichloroethene	5.246	96	55	2.048	ug/l	# 6
23) Vinyl Acetate	6.258	43	56	1.060	ug/l	# 63
25) 2-Butanone	6.987	43	56	9.041	ug/l	# 42
28) Bromochloromethane	7.475	49	86	4.166	ug/l	# 1
29) Tetrahydrofuran	7.457	42	54	14.067	ug/l	# 21
36) 1,1-Dichloropropene	7.863	75	65	1.379	ug/l	# 39
37) Ethyl Acetate	6.987	43	56	2.897	ug/l	# 64
38) Carbon Tetrachloride	7.881	117	199	4.015	ug/l	# 13
41) Methacrylonitrile	7.440	41	56	5.266	ug/l	# 12
44) Trichloroethene	9.028	130	1399	37.526	ug/l	# 62
46) Dibromomethane	9.251	93	56	2.772	ug/l	# 3
48) Methyl methacrylate	9.281	41	63	3.874	ug/l	# 2
51) 4-Methyl-2-Pentanone	10.187	43	74	3.989	ug/l	# 31
59) 2-Hexanone	10.922	43	66	5.102	ug/l	# 19
60) Dibromochloromethane	10.822	129	54	1.553	ug/l	# 11
73) Isopropylbenzene	12.416	105	64	4.090	ug/l	# 48
76) 1,2,3-Trichloropropane	12.716	75	75	5.009	ug/l	# 100
78) n-propylbenzene	12.757	91	245	1.711	ug/l	# 51
81) trans-1,4-Dichloro-2-b...	12.569	75	1029	131.072	ug/l	# 19
82) 4-Chlorotoluene	12.934	91	92	1.107	ug/l	# 37
84) 1,2,4-Trimethylbenzene	13.198	105	120	4.470	ug/l	# 29
86) p-Isopropyltoluene	13.457	119	259	5.875	ug/l	# 51
87) 1,3-Dichlorobenzene	13.445	146	64	1.076	ug/l	# 33
88) 1,4-Dichlorobenzene	13.534	146	244	4.171	ug/l	# 62
89) n-Butylbenzene	13.775	91	272	6.049	ug/l	# 63
91) 1,2-Dichlorobenzene	13.828	146	248	4.877	ug/l	# 67
93) 1,2,4-Trichlorobenzene	15.086	180	99	3.090	ug/l	# 24
94) Hexachlorobutadiene	15.192	225	74	4.280	ug/l	# 16

Data Path : Z:\voasrv\HPCHEM1\MSVOA_D\Data\VD080724\
Data File : VD079659.D
Acq On : 08 Aug 2024 00:51
Operator : RP/MD
Sample : P3488-01
Misc : 5.08G/5.0ml/MSVOA_D/SOIL/A
ALS Vial : 29 Sample Multiplier: 1

Instrument :
MSVOA_D
ClientSampleId :

Quant Time: Aug 08 05:38:45 2024
Quant Method : Z:\voasrv\HPCHEM1\MSVOA_D\Method\82D072924S.M
Quant Title : SW846 8260
QLast Update : Tue Jul 30 03:50:47 2024
Response via : Initial Calibration

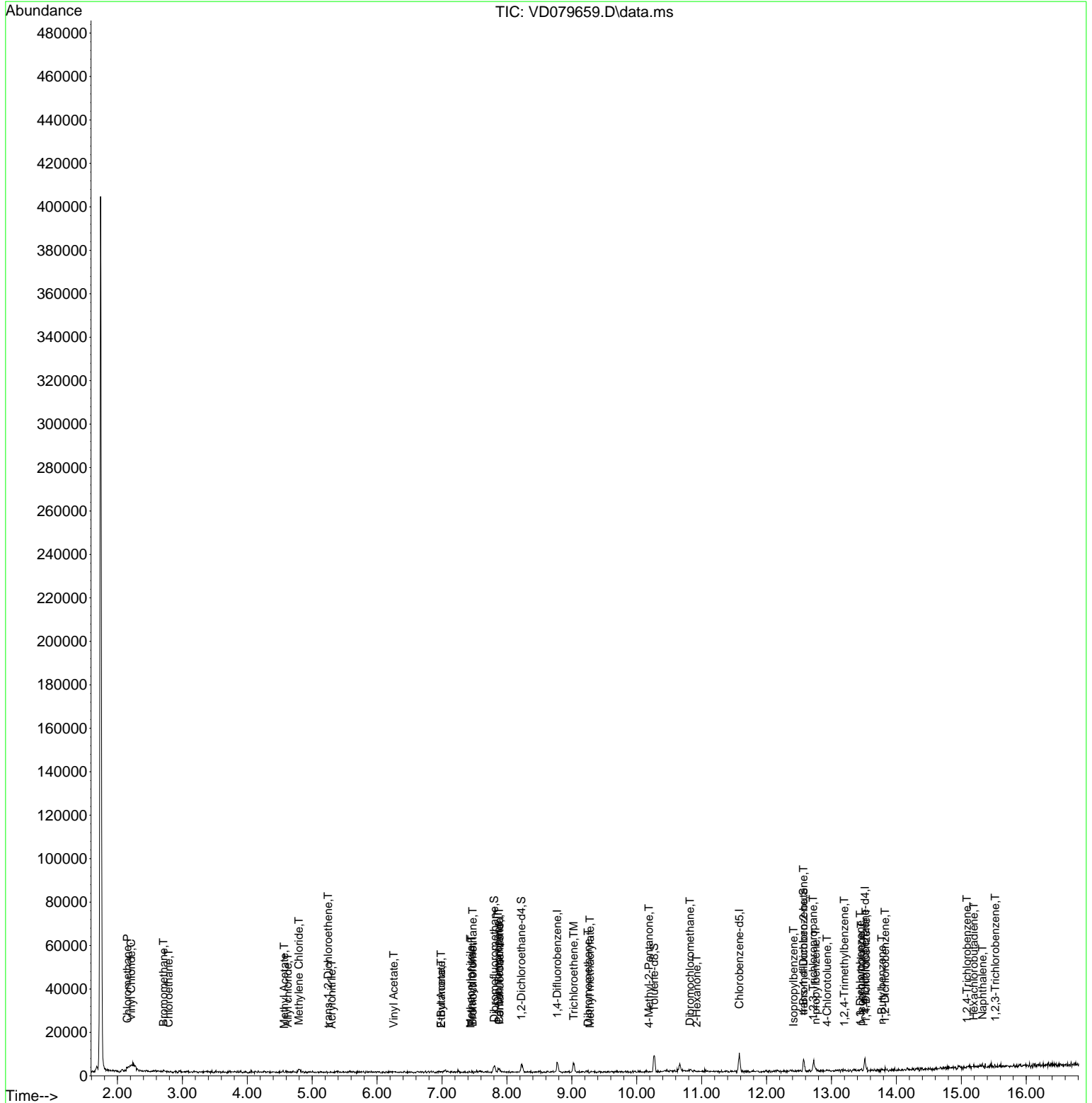
Compound	R.T.	QIon	Response	Conc	Units	Dev(Min)
95) Naphthalene	15.328	128	1178	21.244	ug/l #	56
96) 1,2,3-Trichlorobenzene	15.522	180	145	5.145	ug/l #	1

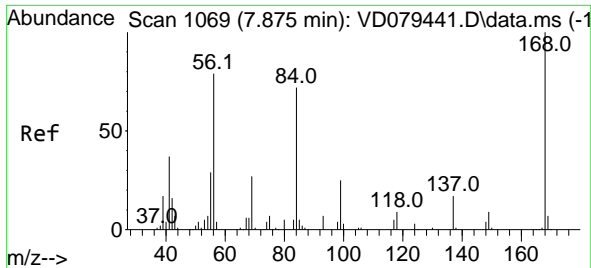
(#) = qualifier out of range (m) = manual integration (+) = signals summed

Data Path : Z:\voasrv\HPCHEM1\MSVOA_D\Data\VD080724\
Data File : VD079659.D
Acq On : 08 Aug 2024 00:51
Operator : RP/MD
Sample : P3488-01
Misc : 5.08G/5.0ml/MSVOA_D/SOIL/A
ALS Vial : 29 Sample Multiplier: 1

Instrument :
MSVOA_D
ClientSampleId :

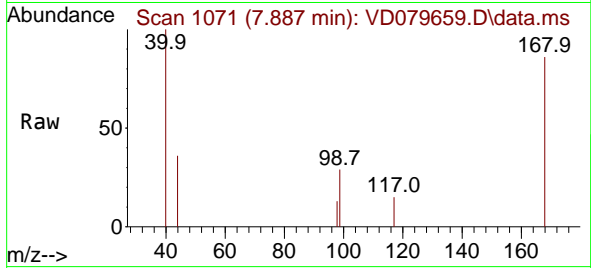
Quant Time: Aug 08 05:38:45 2024
Quant Method : Z:\voasrv\HPCHEM1\MSVOA_D\Method\82D072924S.M
Quant Title : SW846 8260
QLast Update : Tue Jul 30 03:50:47 2024
Response via : Initial Calibration



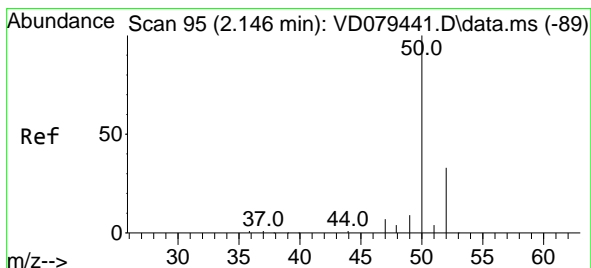
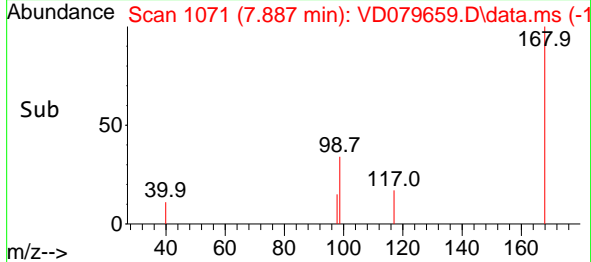
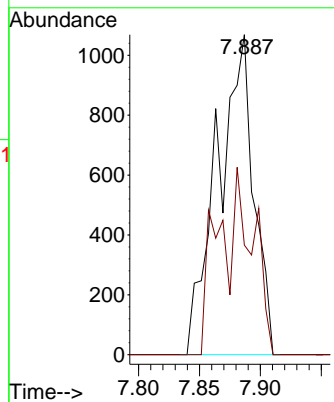


#1
 Pentafluorobenzene
 Concen: 50.000 ug/l
 RT: 7.887 min Scan# 10
 Delta R.T. 0.012 min
 Lab File: VD079659.D
 Acq: 08 Aug 2024 00:51

Instrument :
 MSVOA_D
 ClientSampleId :

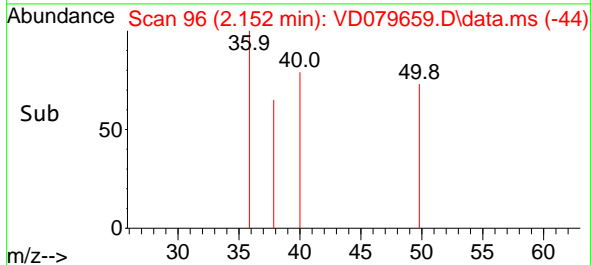
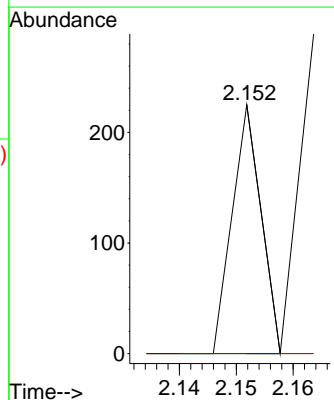
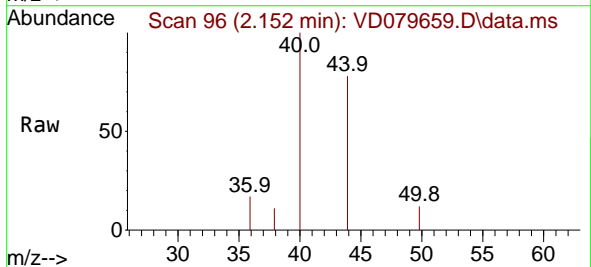


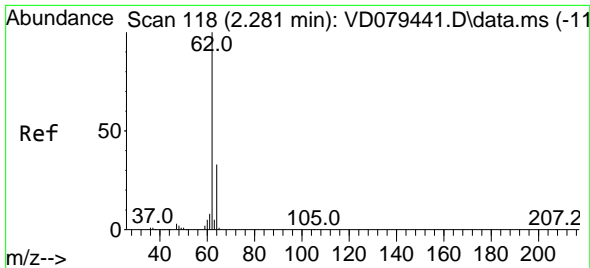
Tgt Ion:168 Resp: 2213
 Ion Ratio Lower Upper
 168 100
 99 34.2 41.1 61.7#



#3
 Chloromethane
 Concen: 2.473 ug/l
 RT: 2.152 min Scan# 96
 Delta R.T. 0.006 min
 Lab File: VD079659.D
 Acq: 08 Aug 2024 00:51

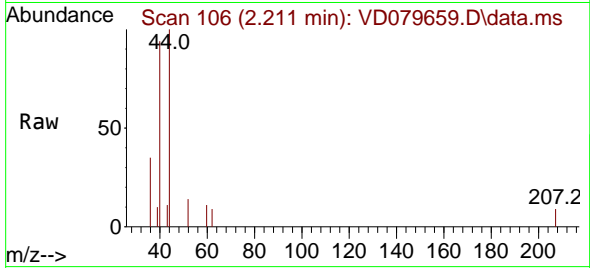
Tgt Ion: 50 Resp: 79
 Ion Ratio Lower Upper
 50 100
 52 0.0 28.2 42.2#



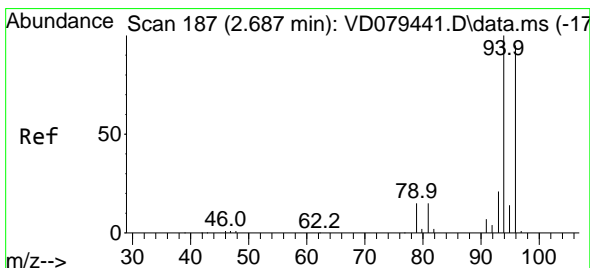
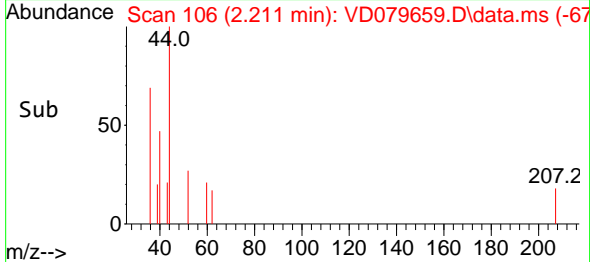
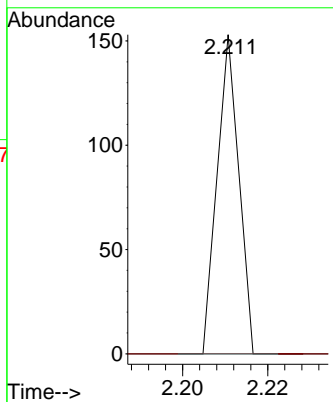


#4
 Vinyl Chloride
 Concen: 1.422 ug/l
 RT: 2.211 min Scan# 106
 Delta R.T. -0.071 min
 Lab File: VD079659.D
 Acq: 08 Aug 2024 00:51

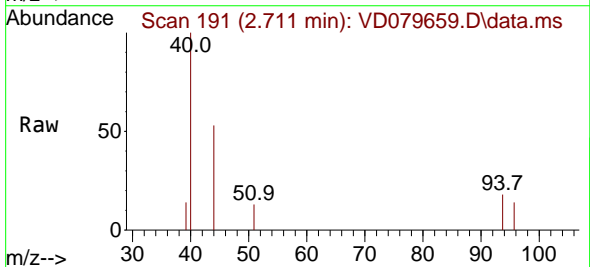
Instrument : MSVOA_D
 ClientSampleId :



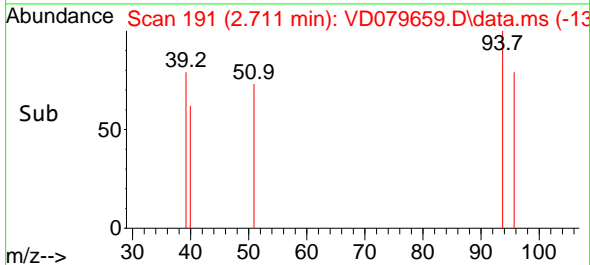
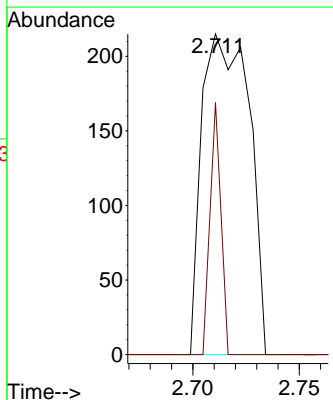
Tgt Ion: 62 Resp: 54
 Ion Ratio Lower Upper
 62 100
 64 0.0 26.3 39.5#

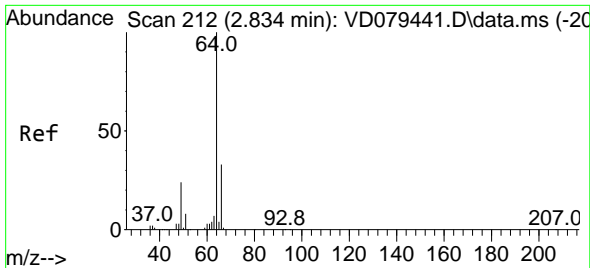


#5
 Bromomethane
 Concen: 11.880 ug/l
 RT: 2.711 min Scan# 191
 Delta R.T. 0.024 min
 Lab File: VD079659.D
 Acq: 08 Aug 2024 00:51



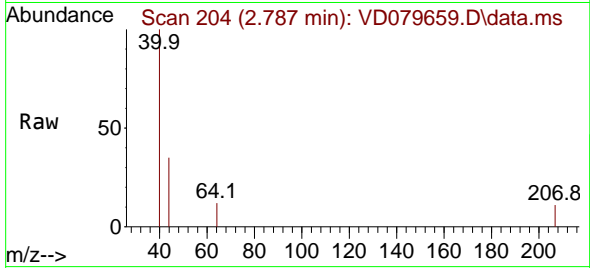
Tgt Ion: 94 Resp: 333
 Ion Ratio Lower Upper
 94 100
 96 18.0 76.9 115.3#



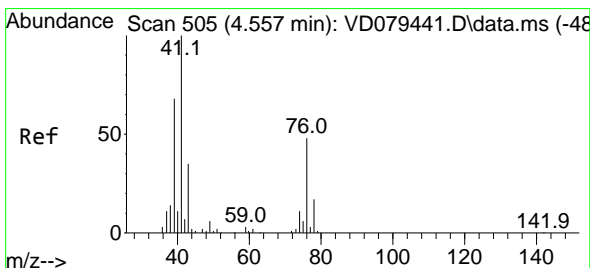
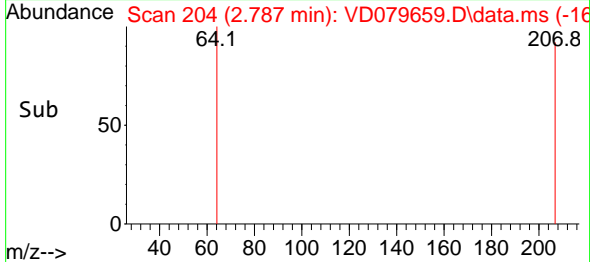
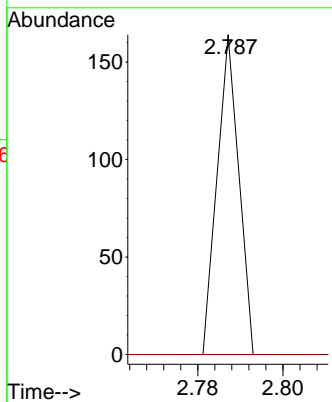


#6
 Chloroethane
 Concen: 2.376 ug/l
 RT: 2.787 min Scan# 204
 Delta R.T. -0.041 min
 Lab File: VD079659.D
 Acq: 08 Aug 2024 00:51

Instrument : MSVOA_D
 ClientSampleId :

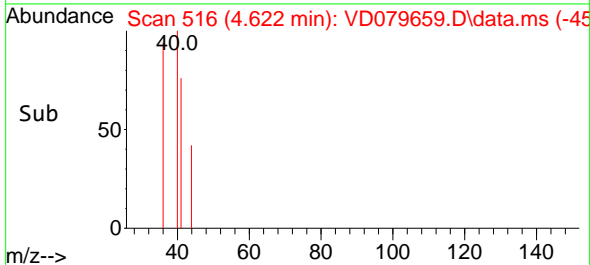
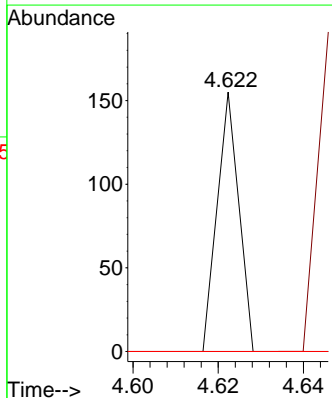
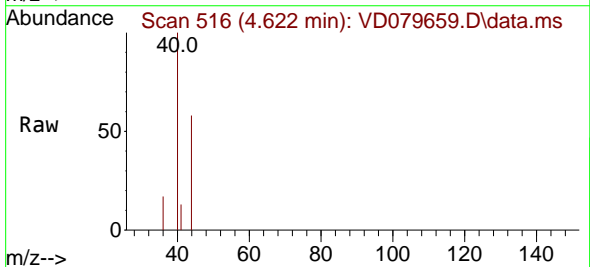


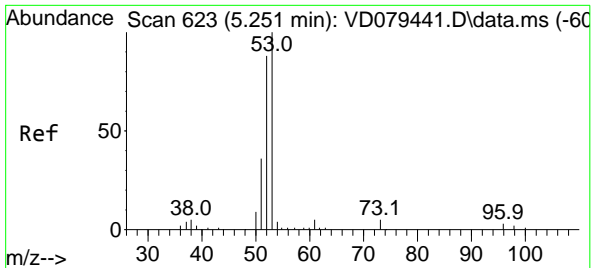
Tgt Ion: 64 Resp: 58
 Ion Ratio Lower Upper
 64 100
 66 0.0 24.5 36.7#



#14
 Allyl chloride
 Concen: 1.742 ug/l
 RT: 4.622 min Scan# 516
 Delta R.T. 0.071 min
 Lab File: VD079659.D
 Acq: 08 Aug 2024 00:51

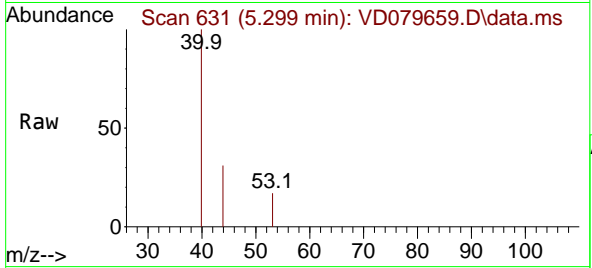
Tgt Ion: 41 Resp: 55
 Ion Ratio Lower Upper
 41 100
 39 0.0 58.0 87.0#
 76 0.0 45.9 68.9#





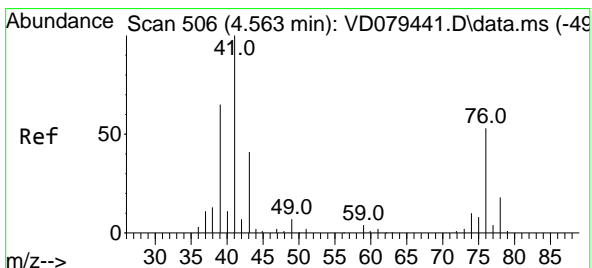
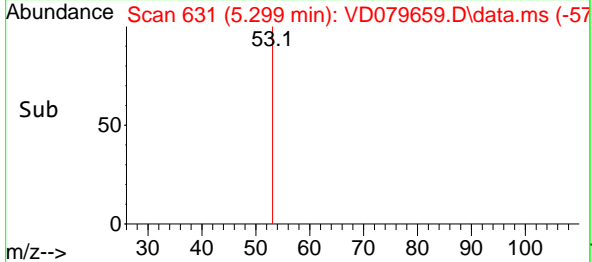
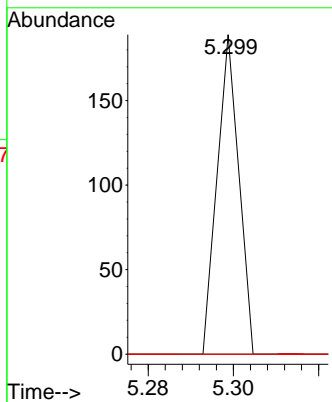
#15
 Acrylonitrile
 Concen: 12.564 ug/l
 RT: 5.299 min Scan# 61
 Delta R.T. 0.047 min
 Lab File: VD079659.D
 Acq: 08 Aug 2024 00:51

Instrument :
 MSVOA_D
 ClientSampleId :



Tgt Ion: 53 Resp: 67

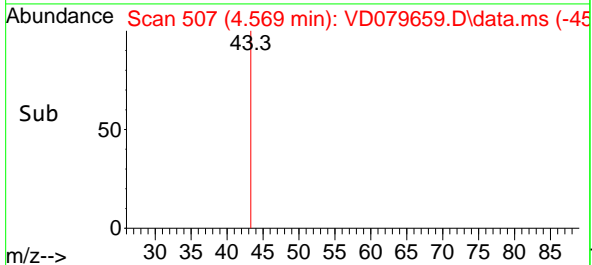
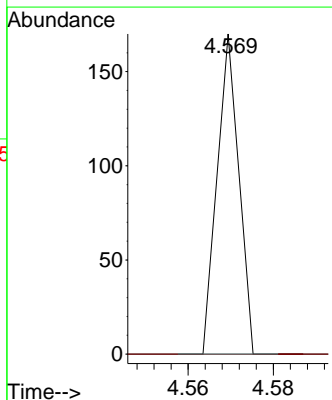
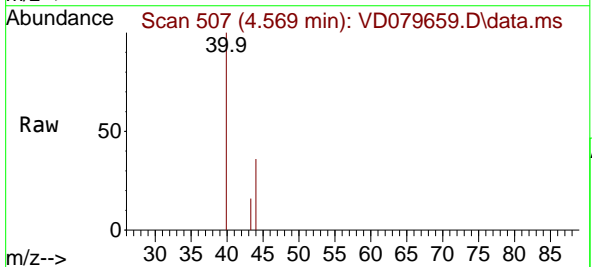
Ion	Ratio	Lower	Upper
53	100		
52	0.0	67.7	101.5#
51	0.0	28.6	42.8#

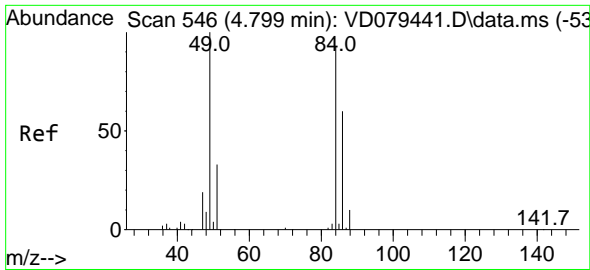


#18
 Methyl Acetate
 Concen: 4.423 ug/l
 RT: 4.569 min Scan# 507
 Delta R.T. -0.000 min
 Lab File: VD079659.D
 Acq: 08 Aug 2024 00:51

Tgt Ion: 43 Resp: 60

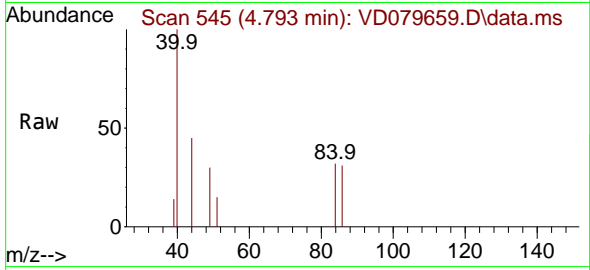
Ion	Ratio	Lower	Upper
43	100		
74	0.0	28.1	42.1#



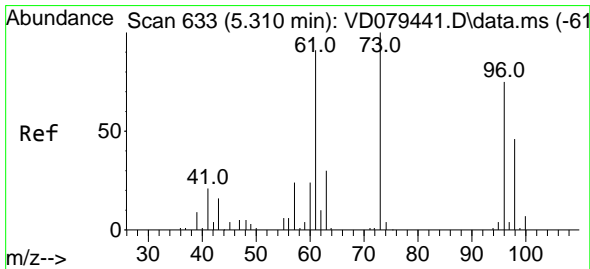
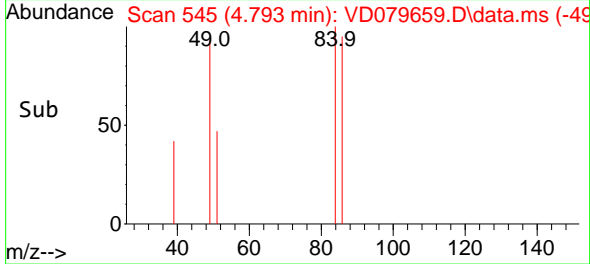
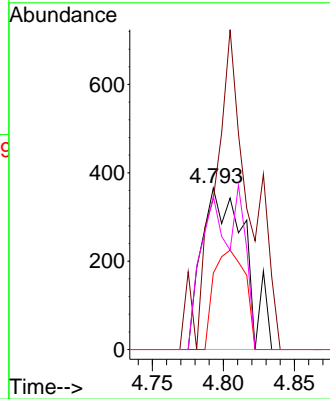


#20
 Methylene Chloride
 Concen: 12.965 ug/l
 RT: 4.793 min Scan# 545
 Delta R.T. -0.006 min
 Lab File: VD079659.D
 Acq: 08 Aug 2024 00:51

Instrument :
 MSVOA_D
 ClientSampleId :

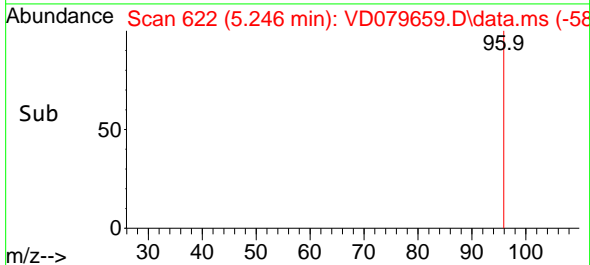
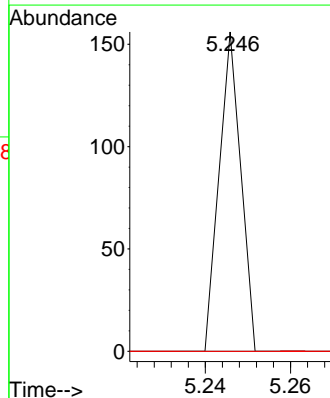
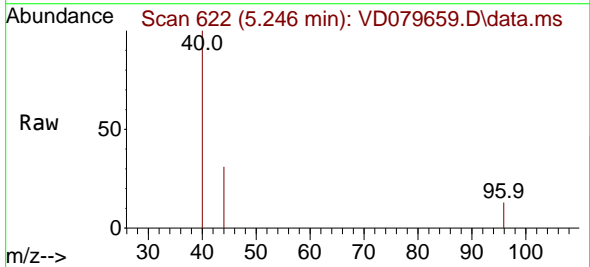


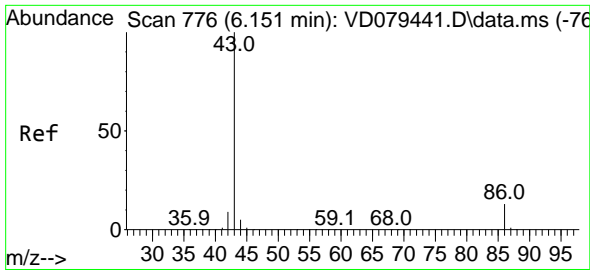
Tgt Ion	Resp	Lower	Upper
84	100		
49	93.2	75.6	113.4
51	47.3	24.2	36.2#
86	94.8	49.2	73.8#



#21
 trans-1,2-Dichloroethene
 Concen: 2.048 ug/l
 RT: 5.246 min Scan# 622
 Delta R.T. -0.065 min
 Lab File: VD079659.D
 Acq: 08 Aug 2024 00:51

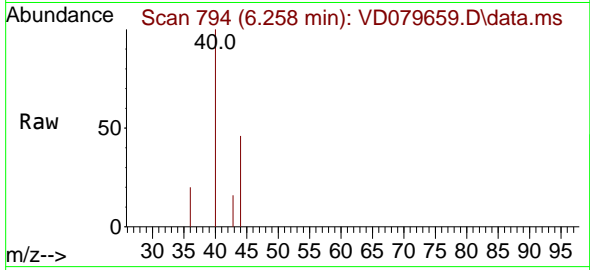
Tgt Ion	Resp	Lower	Upper
96	100		
61	0.0	84.5	126.7#
98	0.0	50.5	75.7#



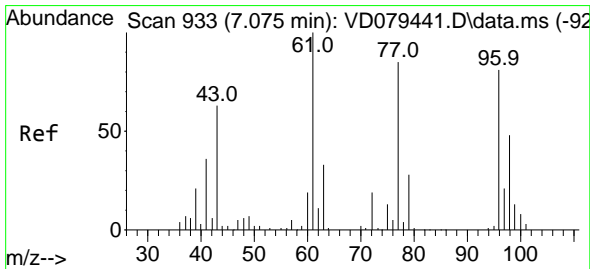
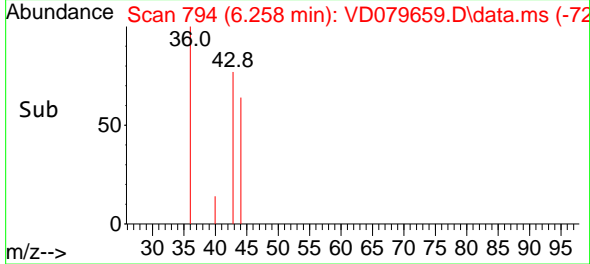
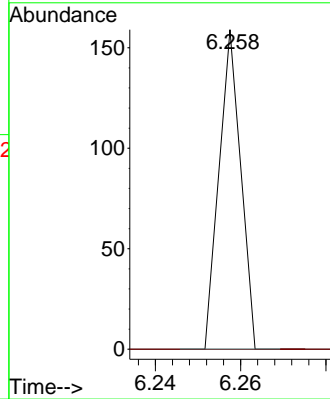


#23
 Vinyl Acetate
 Concen: 1.060 ug/l
 RT: 6.258 min Scan# 794
 Delta R.T. 0.106 min
 Lab File: VD079659.D
 Acq: 08 Aug 2024 00:51

Instrument : MSVOA_D
 ClientSampleId :

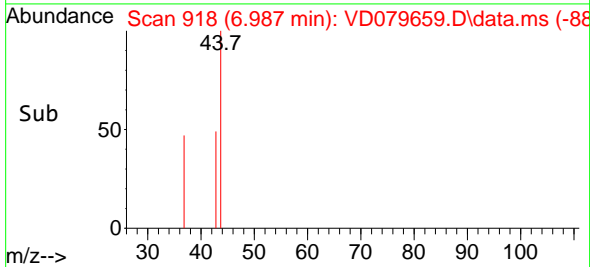
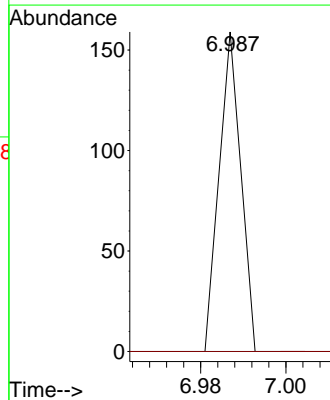
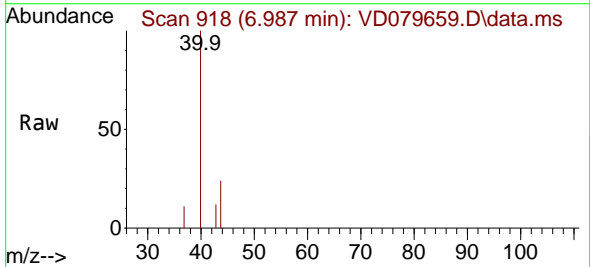


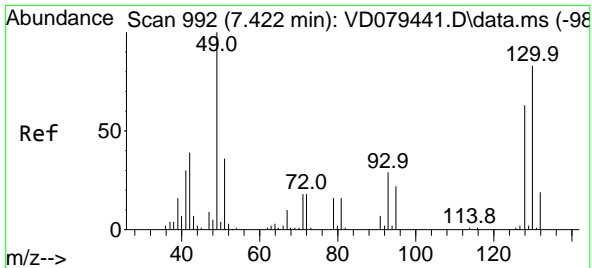
Tgt Ion: 43 Resp: 56
 Ion Ratio Lower Upper
 43 100
 86 0.0 12.3 18.5#



#25
 2-Butanone
 Concen: 9.041 ug/l
 RT: 6.987 min Scan# 918
 Delta R.T. -0.106 min
 Lab File: VD079659.D
 Acq: 08 Aug 2024 00:51

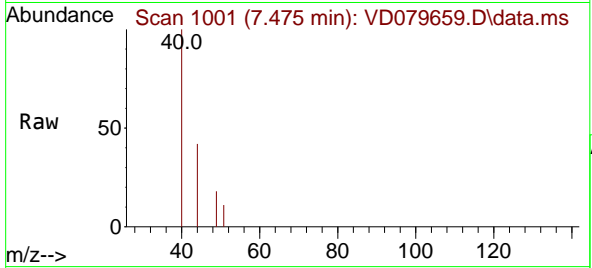
Tgt Ion: 43 Resp: 56
 Ion Ratio Lower Upper
 43 100
 72 0.0 26.4 39.6#



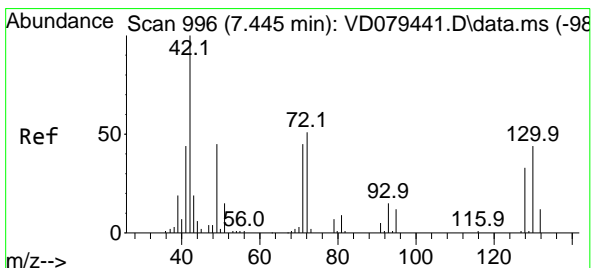
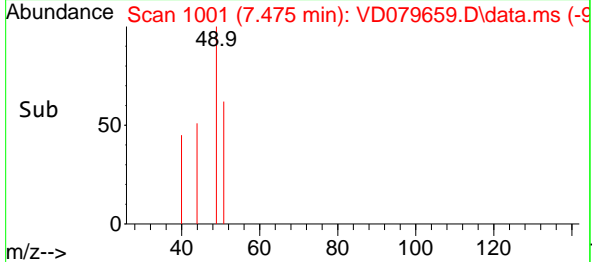
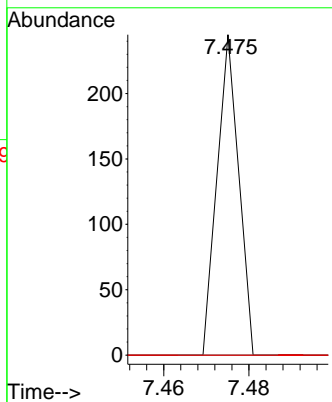


#28
 Bromochloromethane
 Concen: 4.166 ug/l
 RT: 7.475 min Scan# 1001
 Delta R.T. 0.059 min
 Lab File: VD079659.D
 Acq: 08 Aug 2024 00:51

Instrument :
 MSVOA_D
 ClientSampleId :

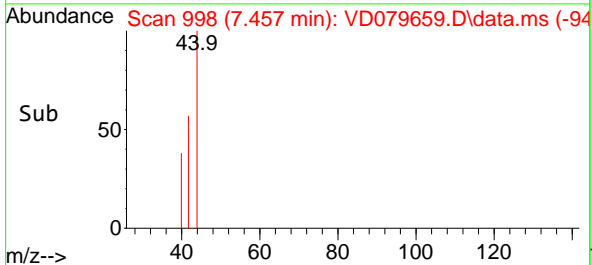
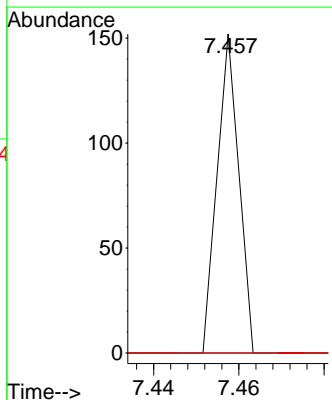
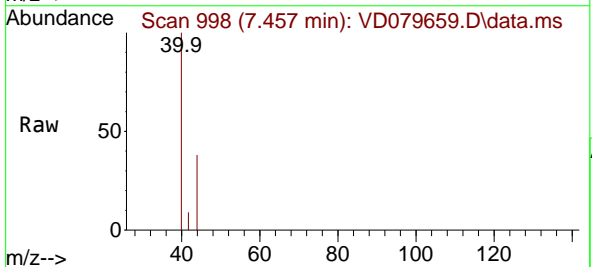


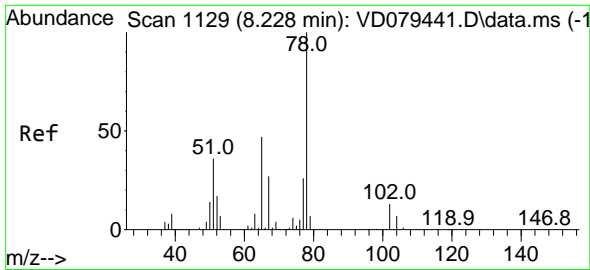
Tgt Ion: 49 Resp: 86
 Ion Ratio Lower Upper
 49 100
 129 0.0 0.0 7.0
 130 0.0 87.7 131.5#



#29
 Tetrahydrofuran
 Concen: 14.067 ug/l
 RT: 7.457 min Scan# 998
 Delta R.T. 0.012 min
 Lab File: VD079659.D
 Acq: 08 Aug 2024 00:51

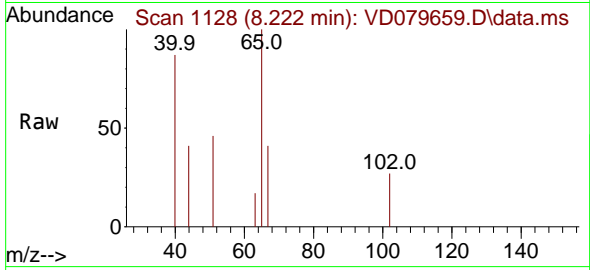
Tgt Ion: 42 Resp: 54
 Ion Ratio Lower Upper
 42 100
 72 0.0 49.4 74.0#
 71 0.0 45.0 67.6#



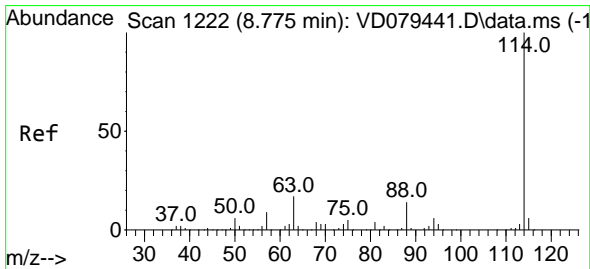
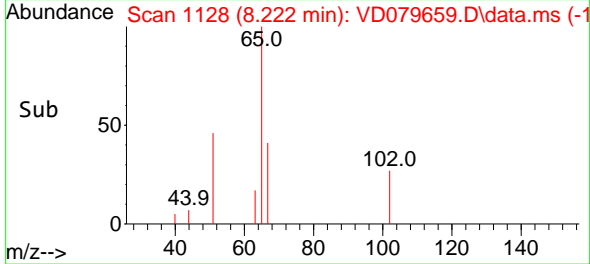
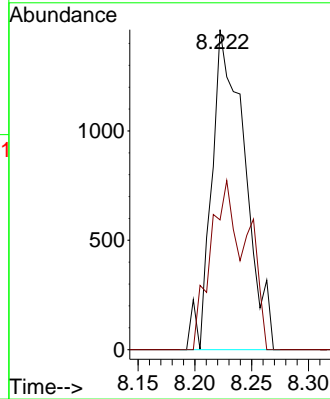


#33
 1,2-Dichloroethane-d4
 Concen: 131.572 ug/l
 RT: 8.222 min Scan# 1128
 Delta R.T. -0.006 min
 Lab File: VD079659.D
 Acq: 08 Aug 2024 00:51

Instrument : MSVOA_D
 ClientSampleId :

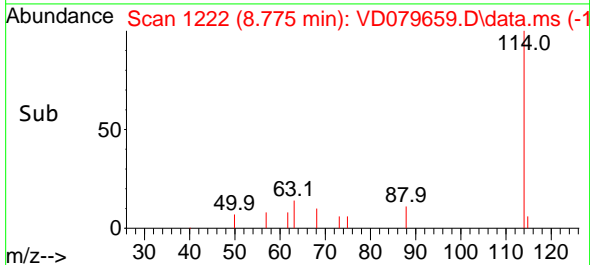
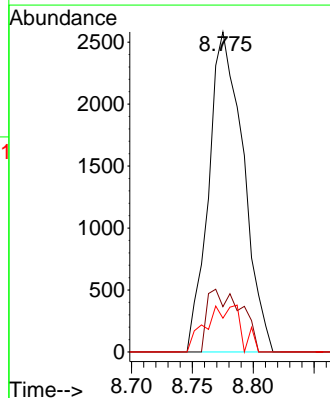
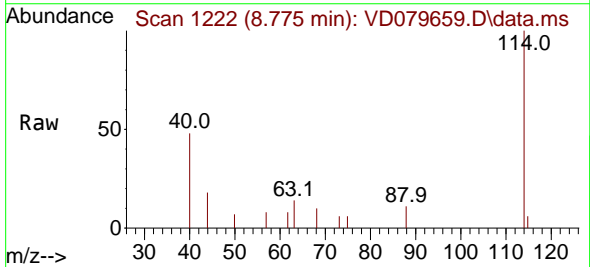


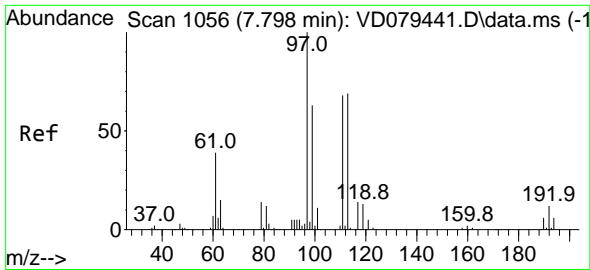
Tgt Ion: 65 Resp: 2958
 Ion Ratio Lower Upper
 65 100
 67 41.7 0.0 111.0



#34
 1,4-Difluorobenzene
 Concen: 50.000 ug/l
 RT: 8.775 min Scan# 1222
 Delta R.T. -0.000 min
 Lab File: VD079659.D
 Acq: 08 Aug 2024 00:51

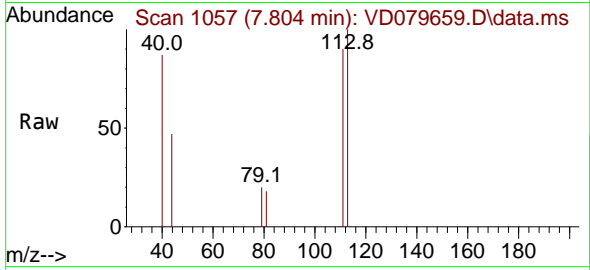
Tgt Ion: 114 Resp: 5104
 Ion Ratio Lower Upper
 114 100
 63 14.2 0.0 34.0
 88 10.6 0.0 27.2



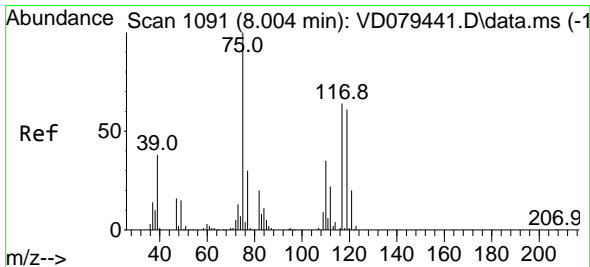
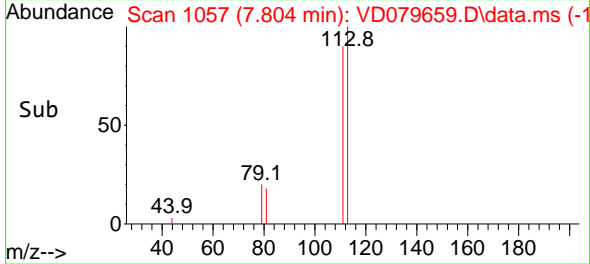
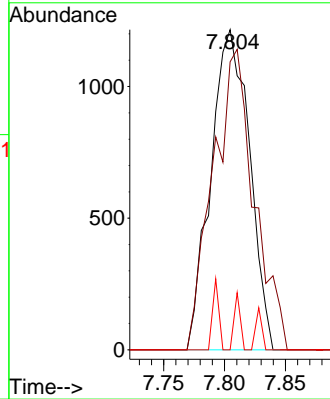


#35
 Dibromofluoromethane
 Concen: 77.751 ug/l
 RT: 7.804 min Scan# 1067
 Delta R.T. -0.000 min
 Lab File: VD079659.D
 Acq: 08 Aug 2024 00:51

Instrument :
 MSVOA_D
 ClientSampleId :

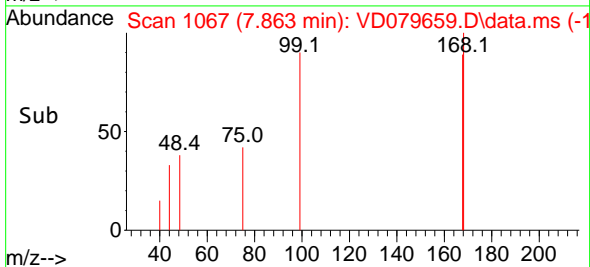
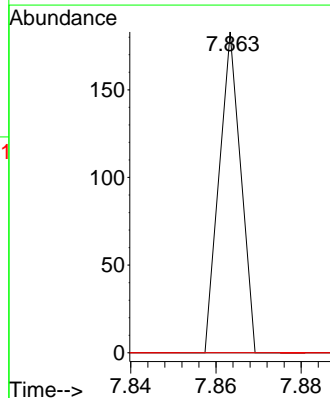
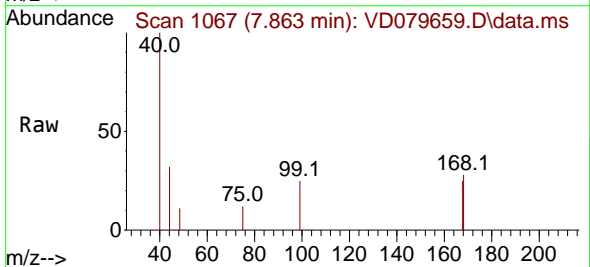


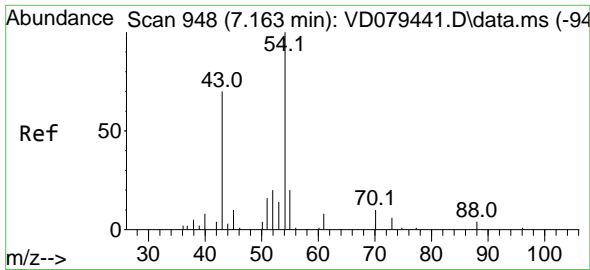
Tgt Ion:113 Resp: 2686
 Ion Ratio Lower Upper
 113 100
 111 99.9 84.0 126.0
 192 2.9 15.4 23.0#



#36
 1,1-Dichloropropene
 Concen: 1.379 ug/l
 RT: 7.863 min Scan# 1067
 Delta R.T. -0.147 min
 Lab File: VD079659.D
 Acq: 08 Aug 2024 00:51

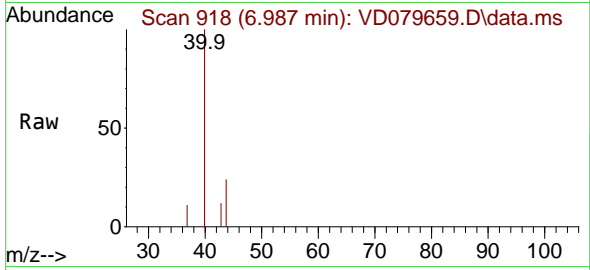
Tgt Ion: 75 Resp: 65
 Ion Ratio Lower Upper
 75 100
 110 0.0 19.6 58.7#
 77 0.0 26.1 39.1#



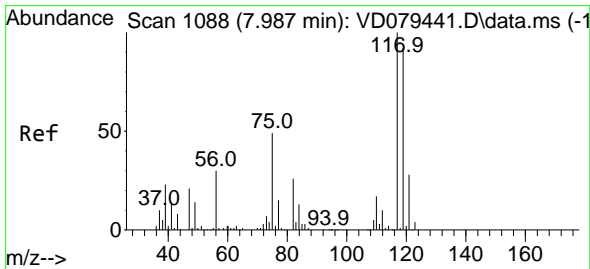
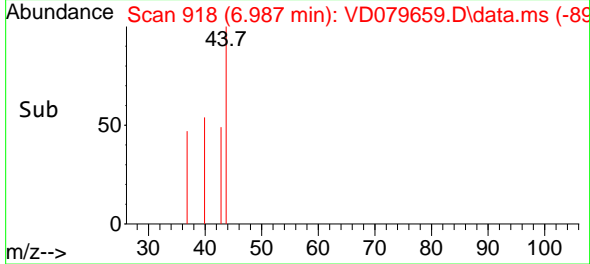
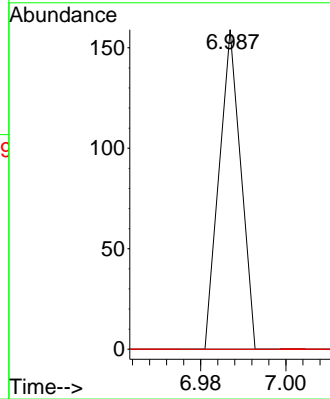


#37
 Ethyl Acetate
 Concen: 2.897 ug/l
 RT: 6.987 min Scan# 911
 Delta R.T. -0.188 min
 Lab File: VD079659.D
 Acq: 08 Aug 2024 00:51

Instrument :
 MSVOA_D
 ClientSampled :

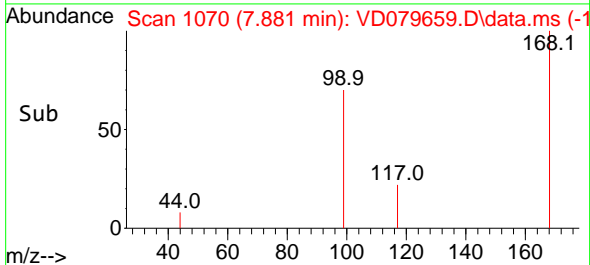
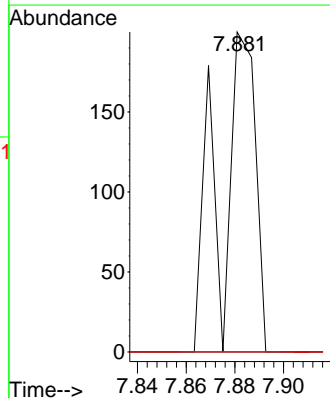
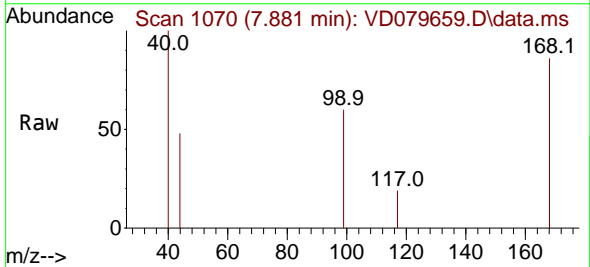


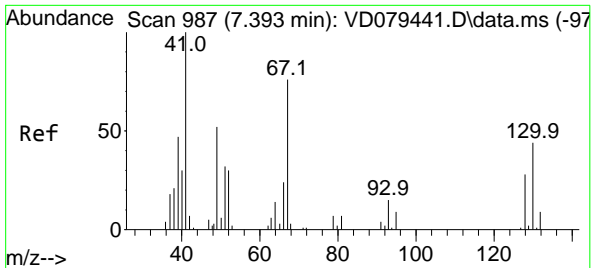
Tgt Ion: 43 Resp: 56
 Ion Ratio Lower Upper
 43 100
 61 0.0 13.9 20.9#
 70 0.0 9.8 14.6#



#38
 Carbon Tetrachloride
 Concen: 4.015 ug/l
 RT: 7.881 min Scan# 1070
 Delta R.T. -0.106 min
 Lab File: VD079659.D
 Acq: 08 Aug 2024 00:51

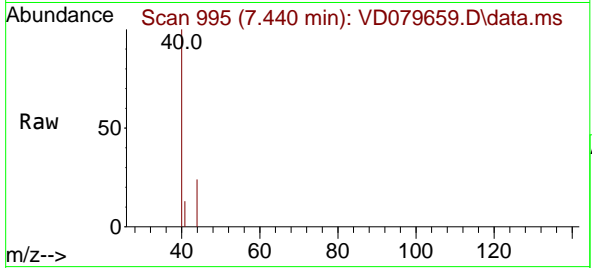
Tgt Ion: 117 Resp: 199
 Ion Ratio Lower Upper
 117 100
 119 0.0 75.4 113.0#
 121 0.0 25.0 37.4#





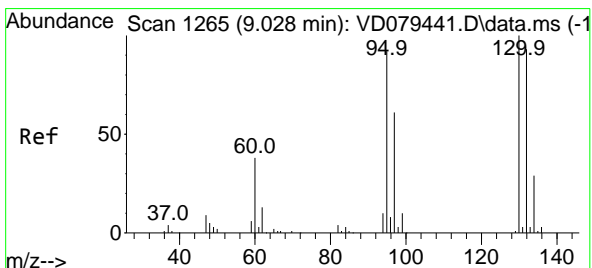
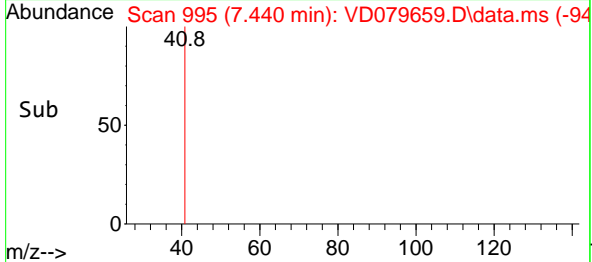
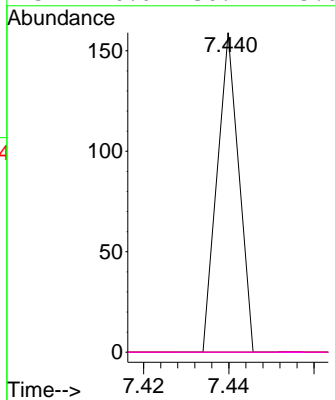
#41
 Methacrylonitrile
 Concen: 5.266 ug/l
 RT: 7.440 min Scan# 91
 Delta R.T. 0.023 min
 Lab File: VD079659.D
 Acq: 08 Aug 2024 00:51

Instrument :
 MSVOA_D
 ClientSampleId :



Tgt Ion: 41 Resp: 56

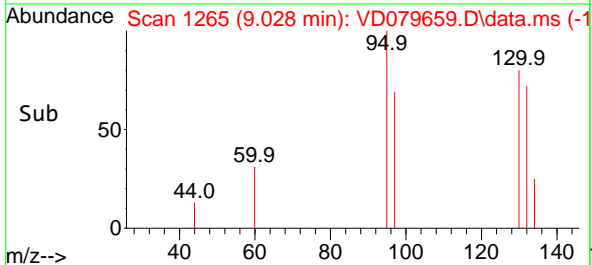
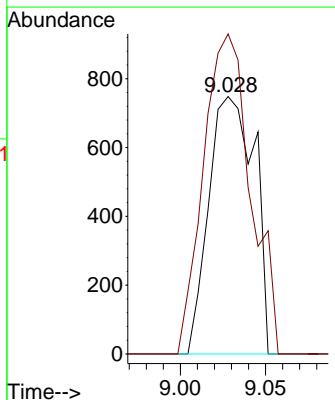
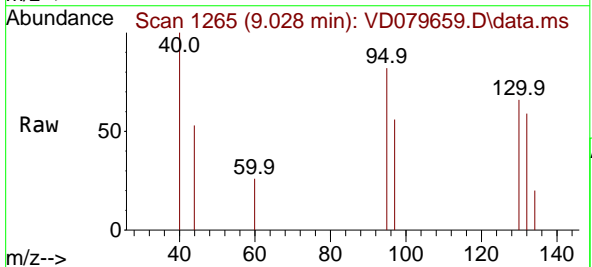
Ion	Ratio	Lower	Upper
41	100		
39	0.0	41.4	62.0#
67	0.0	85.8	128.6#
52	0.0	30.4	45.6#

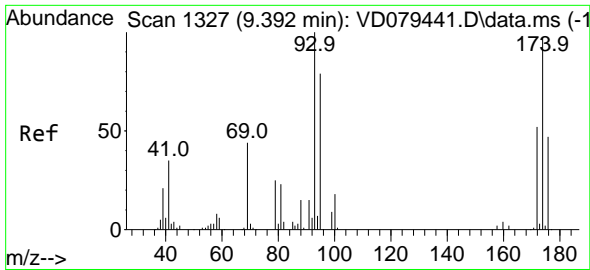


#44
 Trichloroethene
 Concen: 37.526 ug/l
 RT: 9.028 min Scan# 1265
 Delta R.T. -0.000 min
 Lab File: VD079659.D
 Acq: 08 Aug 2024 00:51

Tgt Ion: 130 Resp: 1399

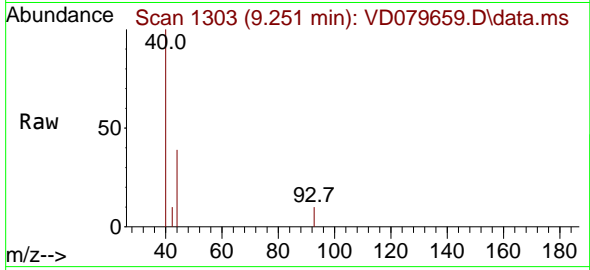
Ion	Ratio	Lower	Upper
130	100		
95	124.3	0.0	177.8





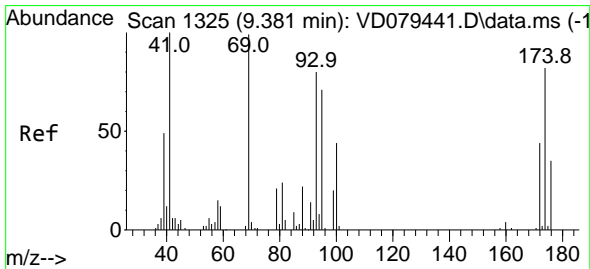
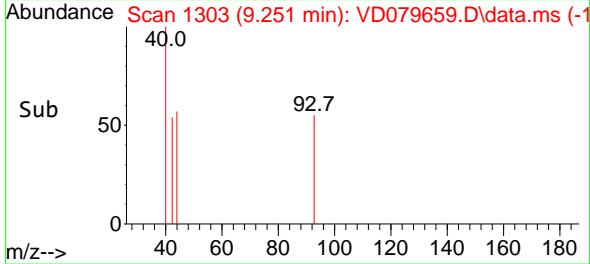
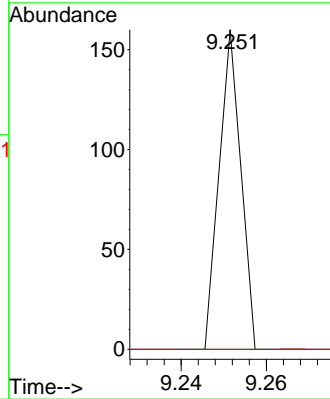
#46
 Dibromomethane
 Concen: 2.772 ug/l
 RT: 9.251 min Scan# 11
 Delta R.T. -0.141 min
 Lab File: VD079659.D
 Acq: 08 Aug 2024 00:51

Instrument : MSVOA_D
 ClientSampleId :



Tgt Ion: 93 Resp: 56

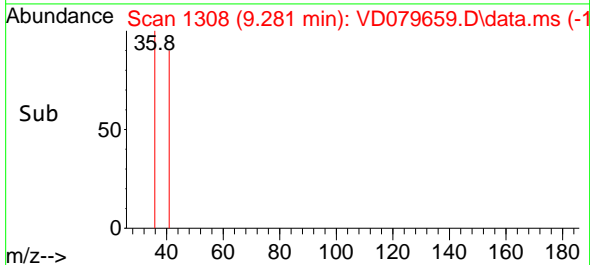
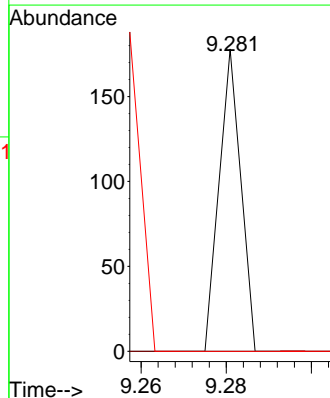
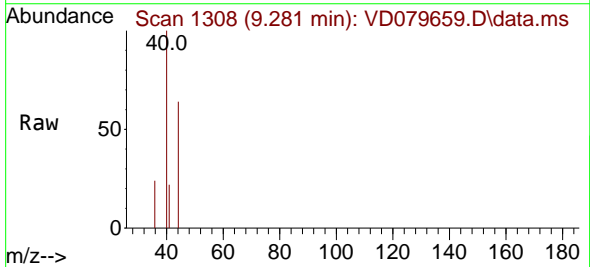
Ion	Ratio	Lower	Upper
93	100		
95	0.0	65.6	98.4#
174	0.0	82.3	123.5#

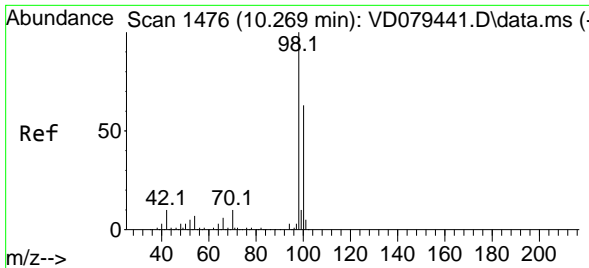


#48
 Methyl methacrylate
 Concen: 3.874 ug/l
 RT: 9.281 min Scan# 1308
 Delta R.T. -0.100 min
 Lab File: VD079659.D
 Acq: 08 Aug 2024 00:51

Tgt Ion: 41 Resp: 63

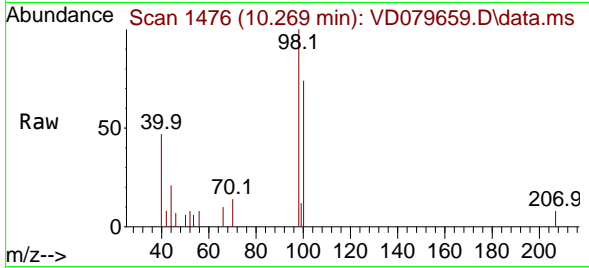
Ion	Ratio	Lower	Upper
41	100		
69	0.0	96.7	145.1#
39	0.0	43.8	65.6#



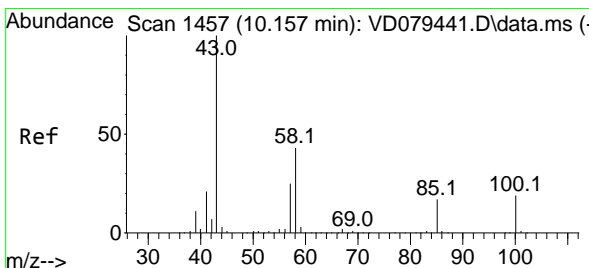
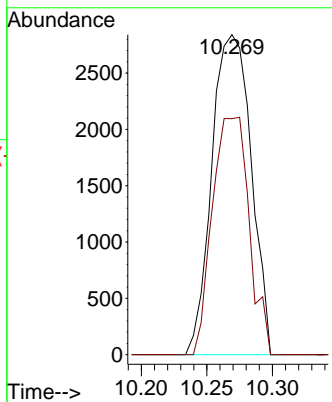
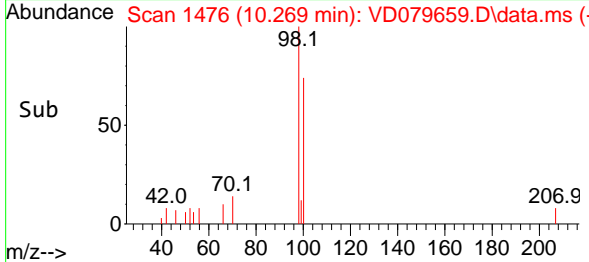


#50
 Toluene-d8
 Concen: 44.240 ug/l
 RT: 10.269 min Scan# 1476
 Delta R.T. 0.006 min
 Lab File: VD079659.D
 Acq: 08 Aug 2024 00:51

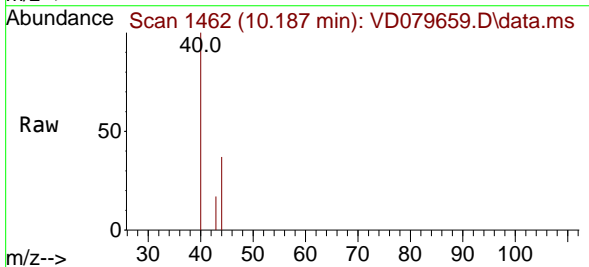
Instrument : MSVOA_D
 ClientSampleId :



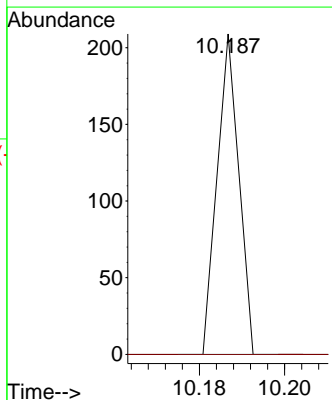
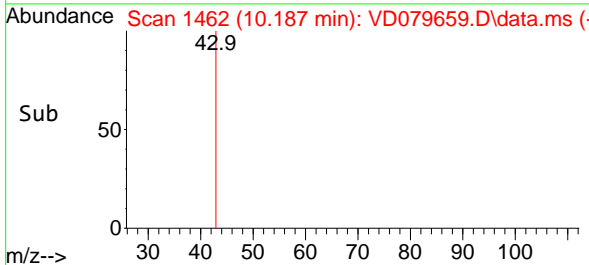
Tgt Ion: 98 Resp: 5935
 Ion Ratio Lower Upper
 98 100
 100 69.3 51.6 77.4

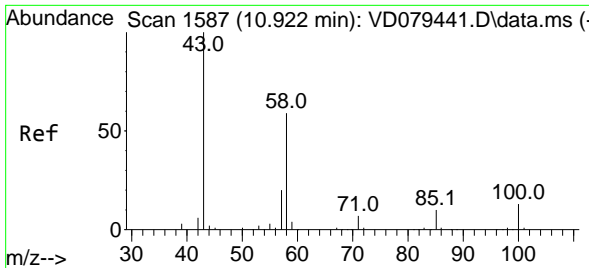


#51
 4-Methyl-2-Pentanone
 Concen: 3.989 ug/l
 RT: 10.187 min Scan# 1462
 Delta R.T. 0.029 min
 Lab File: VD079659.D
 Acq: 08 Aug 2024 00:51



Tgt Ion: 43 Resp: 74
 Ion Ratio Lower Upper
 43 100
 58 0.0 36.6 55.0#

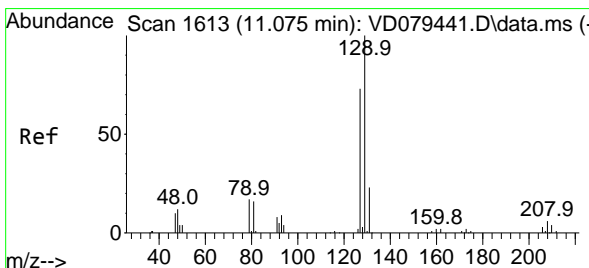
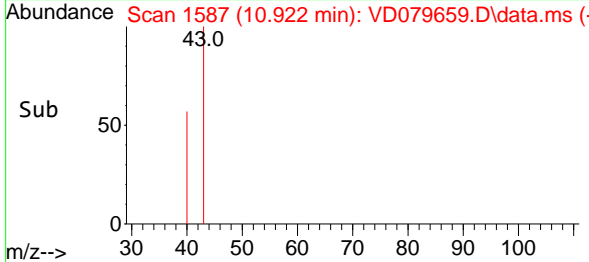
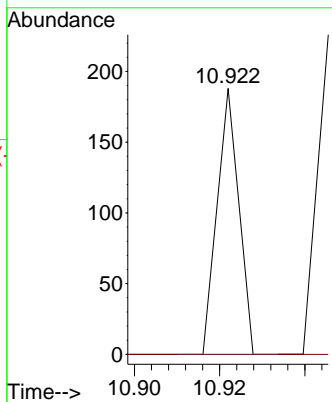
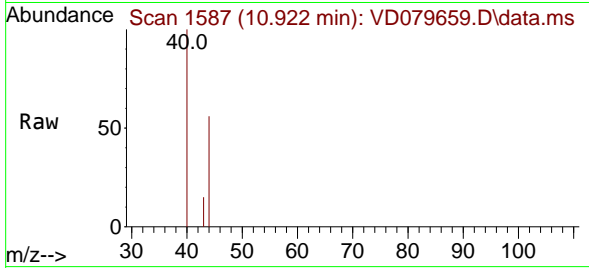




#59
 2-Hexanone
 Concen: 5.102 ug/l
 RT: 10.922 min Scan# 11
 Delta R.T. 0.006 min
 Lab File: VD079659.D
 Acq: 08 Aug 2024 00:51

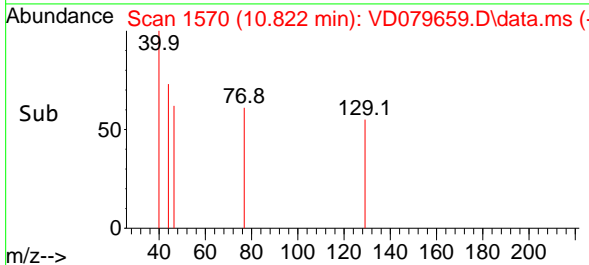
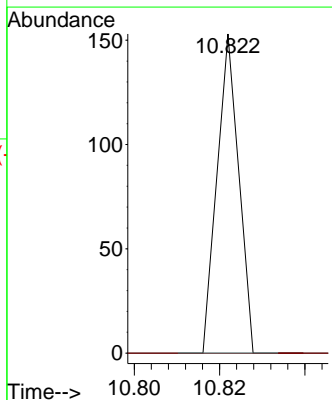
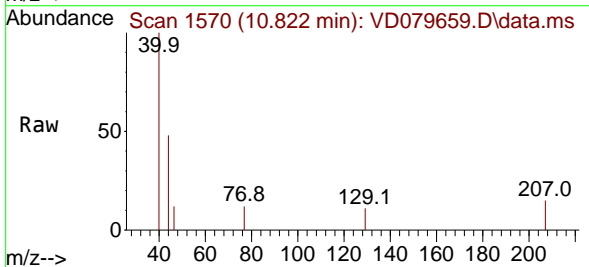
Instrument :
 MSVOA_D
 ClientSampleId :

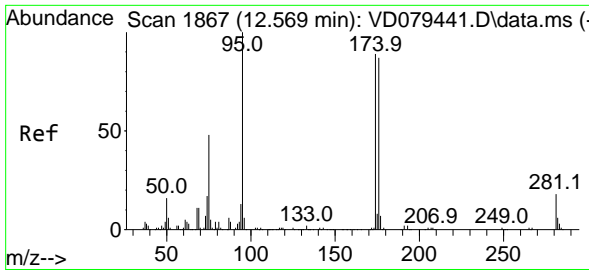
Tgt Ion: 43 Resp: 66
 Ion Ratio Lower Upper
 43 100
 58 0.0 31.1 93.5#



#60
 Dibromochloromethane
 Concen: 1.553 ug/l
 RT: 10.822 min Scan# 1570
 Delta R.T. -0.247 min
 Lab File: VD079659.D
 Acq: 08 Aug 2024 00:51

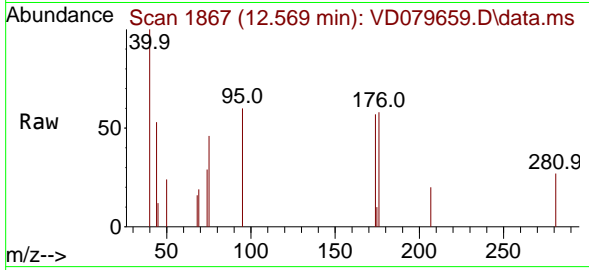
Tgt Ion: 129 Resp: 54
 Ion Ratio Lower Upper
 129 100
 127 0.0 38.0 113.9#



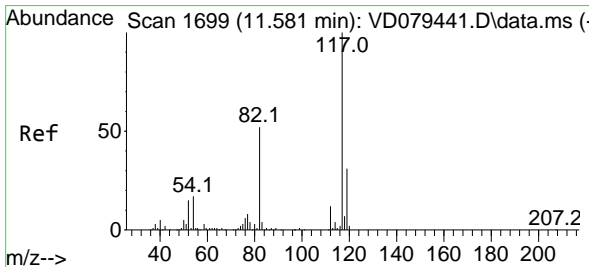
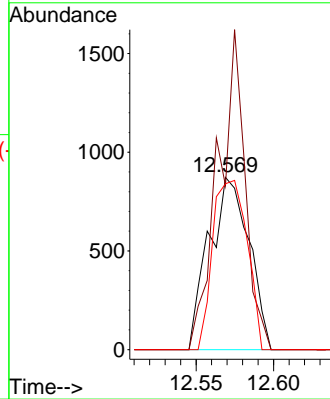
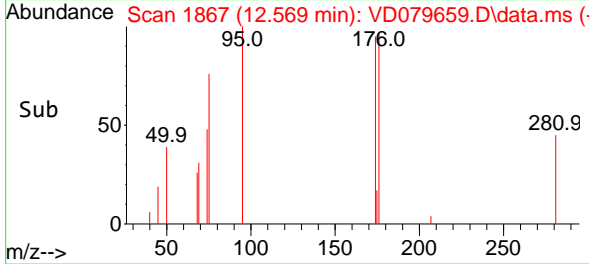


#62
 4-Bromofluorobenzene
 Concen: 40.415 ug/l
 RT: 12.569 min Scan# 1867
 Delta R.T. -0.000 min
 Lab File: VD079659.D
 Acq: 08 Aug 2024 00:51

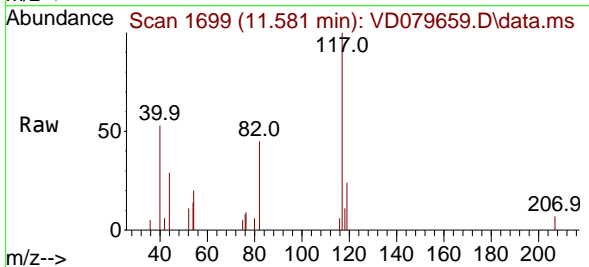
Instrument : MSVOA_D
 ClientSampleId :



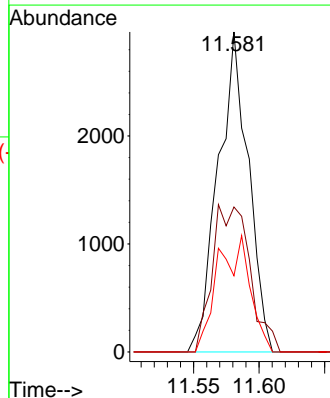
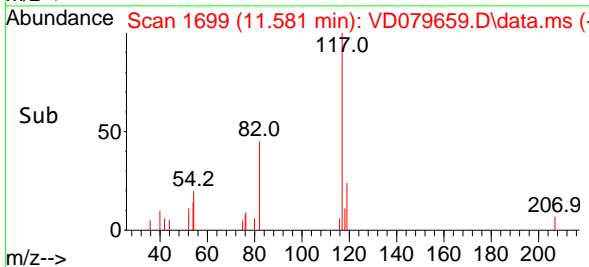
Tgt Ion: 95 Resp: 1569
 Ion Ratio Lower Upper
 95 100
 174 124.3 0.0 195.4
 176 84.4 0.0 192.6

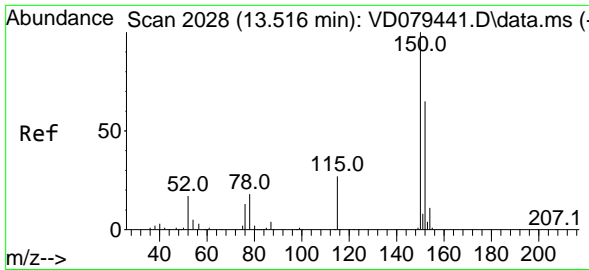


#63
 Chlorobenzene-d5
 Concen: 50.000 ug/l
 RT: 11.581 min Scan# 1699
 Delta R.T. -0.000 min
 Lab File: VD079659.D
 Acq: 08 Aug 2024 00:51



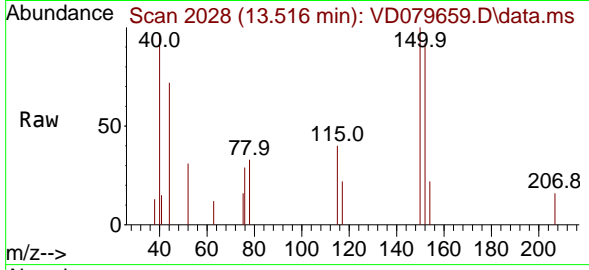
Tgt Ion: 117 Resp: 4752
 Ion Ratio Lower Upper
 117 100
 82 45.3 39.8 59.6
 119 23.8 25.7 38.5#



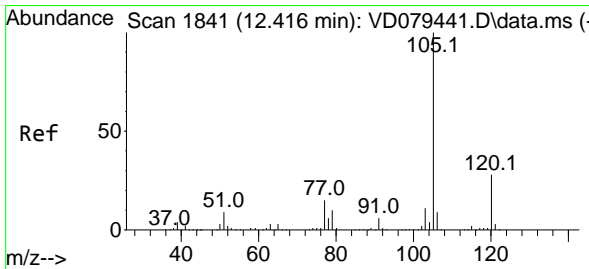
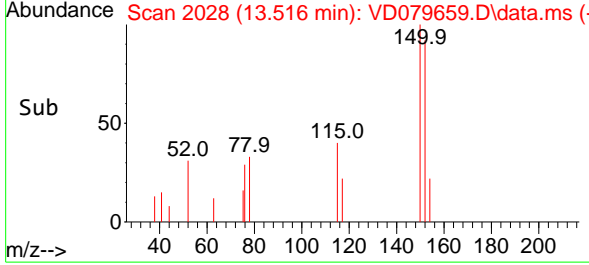
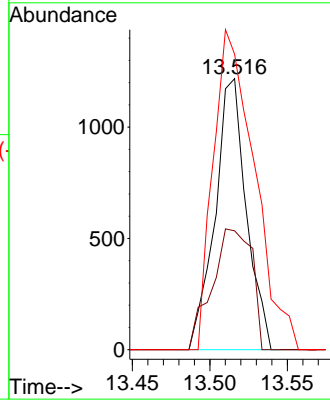


#72
 1,4-Dichlorobenzene-d4
 Concen: 50.000 ug/l
 RT: 13.516 min Scan# 2028
 Delta R.T. 0.006 min
 Lab File: VD079659.D
 Acq: 08 Aug 2024 00:51

Instrument :
 MSVOA_D
 ClientSampleId :

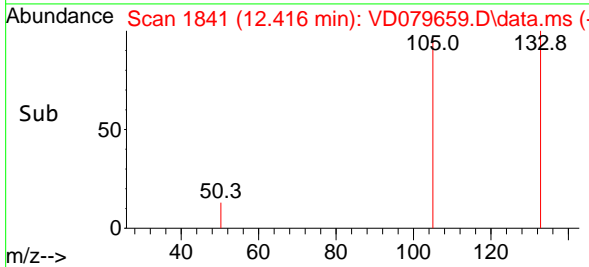
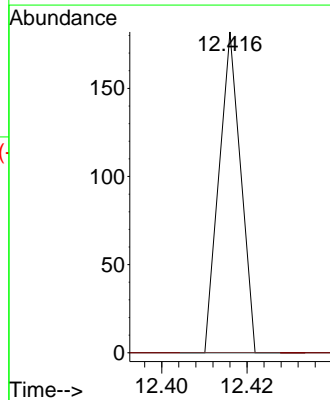
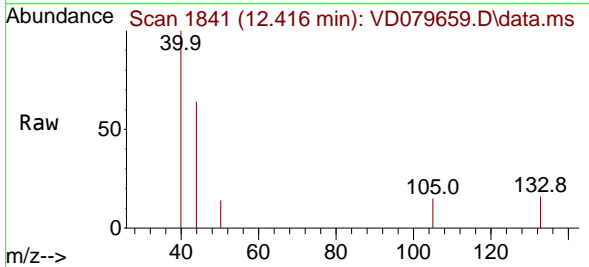


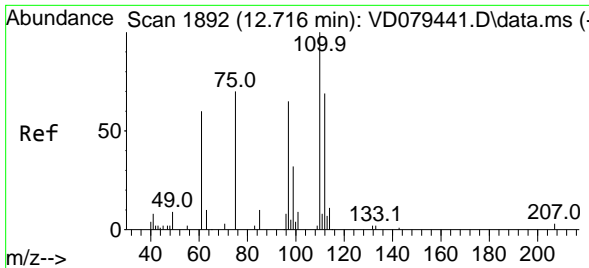
Tgt Ion:152 Resp: 1713
 Ion Ratio Lower Upper
 152 100
 115 56.6 26.5 79.5
 150 154.8 0.0 341.6



#73
 Isopropylbenzene
 Concen: 4.090 ug/l
 RT: 12.416 min Scan# 1841
 Delta R.T. 0.000 min
 Lab File: VD079659.D
 Acq: 08 Aug 2024 00:51

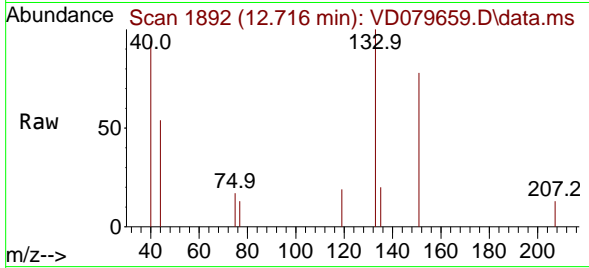
Tgt Ion:105 Resp: 64
 Ion Ratio Lower Upper
 105 100
 120 0.0 13.6 40.7#



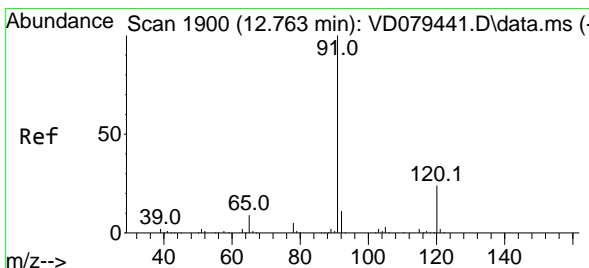
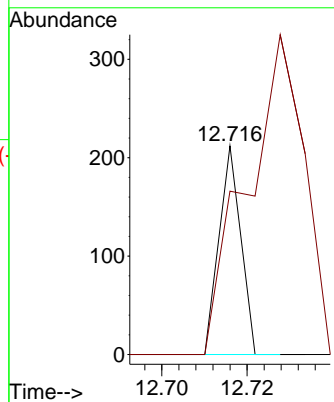
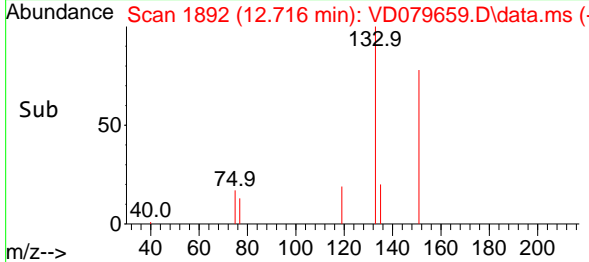


#76
 1,2,3-Trichloropropane
 Concen: 5.009 ug/l
 RT: 12.716 min Scan# 1892
 Delta R.T. -0.006 min
 Lab File: VD079659.D
 Acq: 08 Aug 2024 00:51

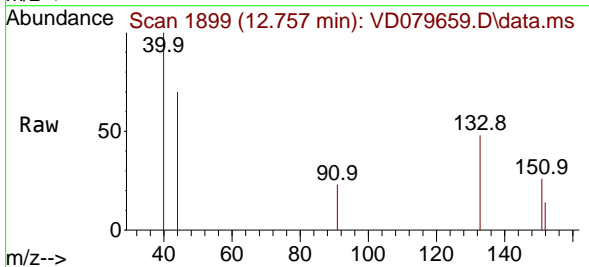
Instrument : MSVOA_D
 ClientSampleId :



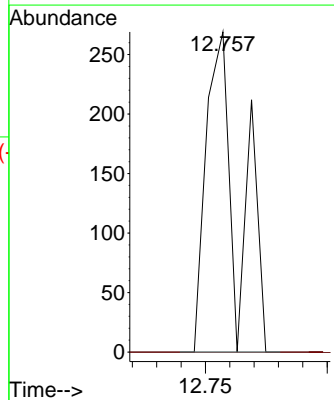
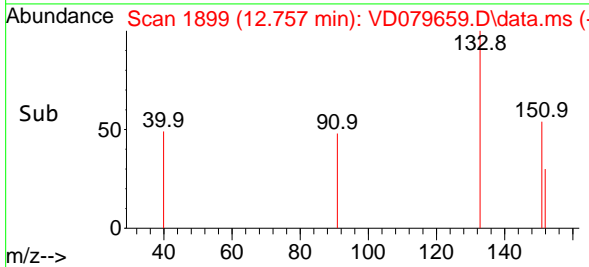
Tgt Ion: 75 Resp: 75
 Ion Ratio Lower Upper
 75 100
 77 402.7 0.0 0.0#

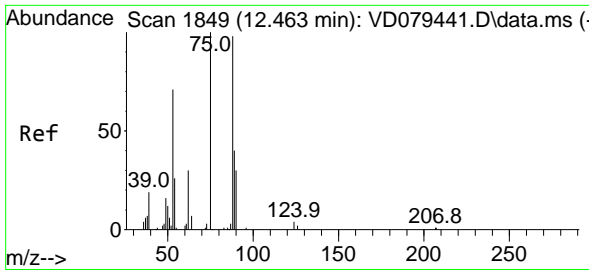


#78
 n-propylbenzene
 Concen: 1.711 ug/l
 RT: 12.757 min Scan# 1899
 Delta R.T. -0.000 min
 Lab File: VD079659.D
 Acq: 08 Aug 2024 00:51



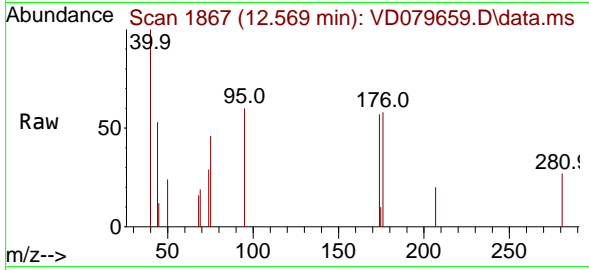
Tgt Ion: 91 Resp: 245
 Ion Ratio Lower Upper
 91 100
 120 0.0 12.3 36.8#



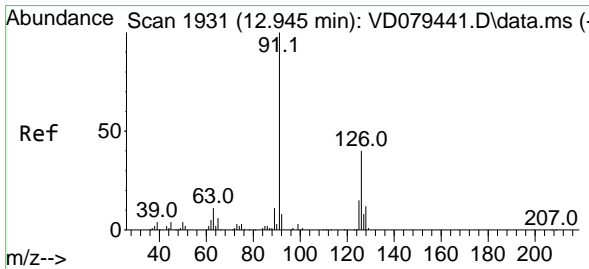
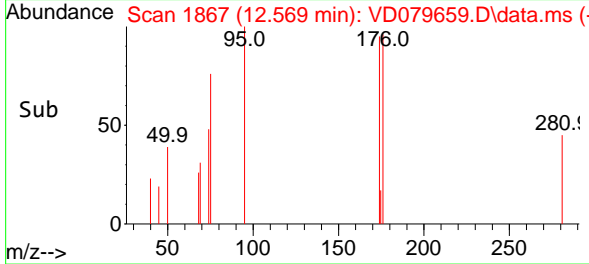
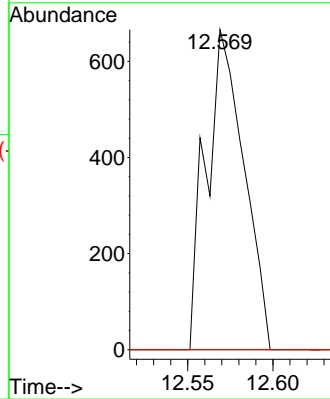


#81
 trans-1,4-Dichloro-2-butene
 Concen: 131.072 ug/l
 RT: 12.569 min Scan# 1849
 Delta R.T. 0.100 min
 Lab File: VD079659.D
 Acq: 08 Aug 2024 00:51

Instrument : MSVOA_D
 ClientSampleId :

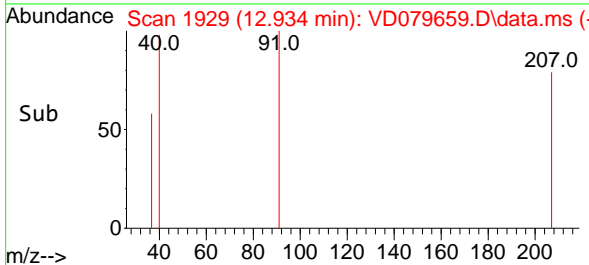
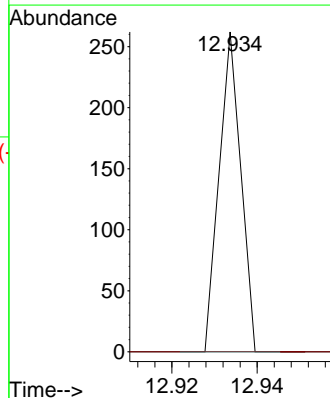
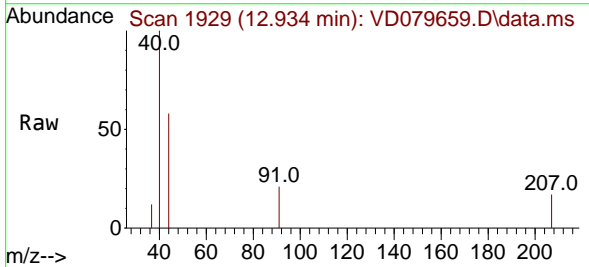


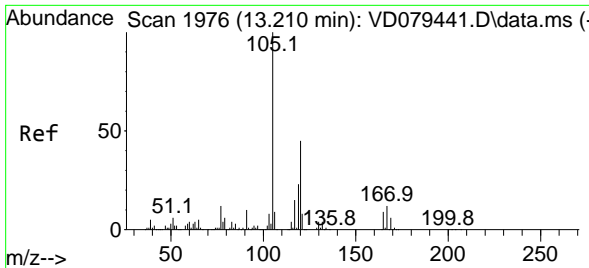
Tgt Ion: 75 Resp: 1029
 Ion Ratio Lower Upper
 75 100
 53 0.0 61.4 92.2#
 89 0.0 35.4 53.0#



#82
 4-Chlorotoluene
 Concen: 1.107 ug/l
 RT: 12.934 min Scan# 1929
 Delta R.T. -0.012 min
 Lab File: VD079659.D
 Acq: 08 Aug 2024 00:51

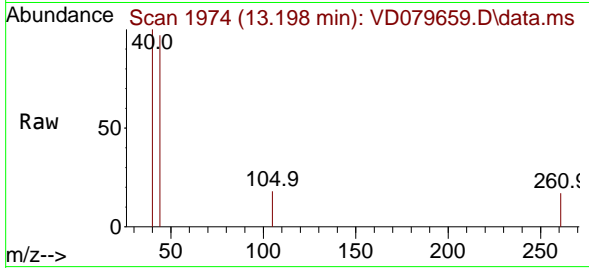
Tgt Ion: 91 Resp: 92
 Ion Ratio Lower Upper
 91 100
 126 0.0 18.9 56.9#



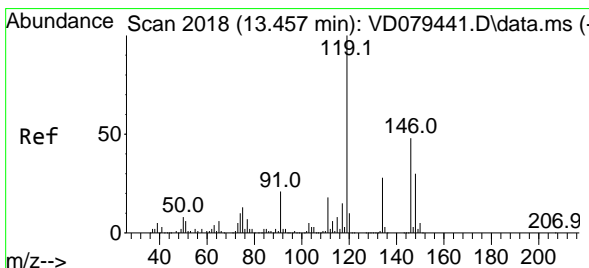
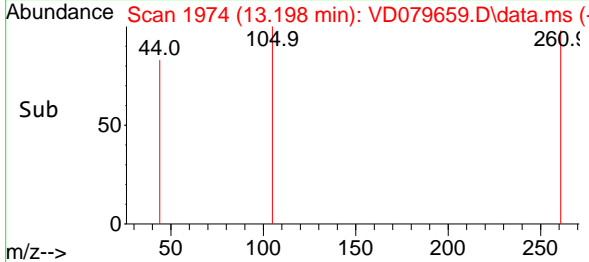
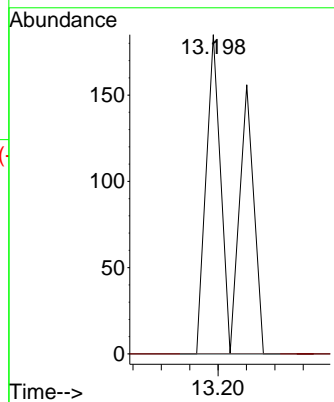


#84
 1,2,4-Trimethylbenzene
 Concen: 4.470 ug/l
 RT: 13.198 min Scan# 1974
 Delta R.T. -0.006 min
 Lab File: VD079659.D
 Acq: 08 Aug 2024 00:51

Instrument : MSVOA_D
 ClientSampleId :

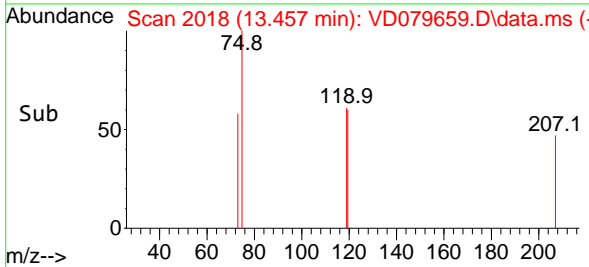
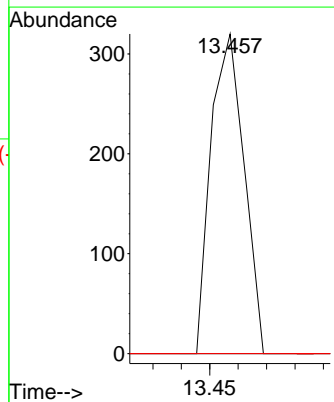
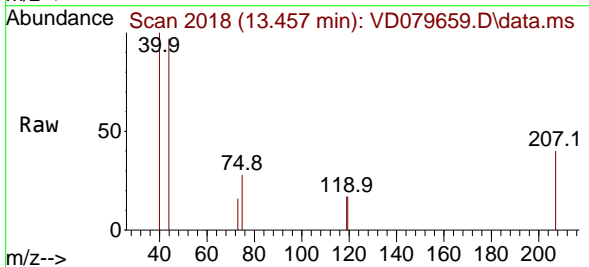


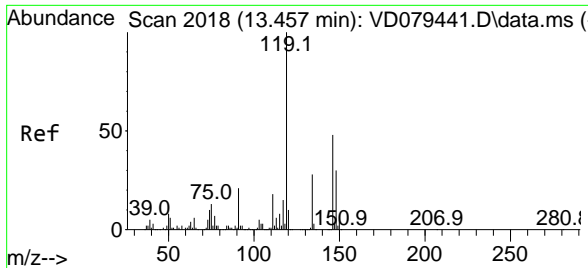
Tgt Ion:105 Resp: 120
 Ion Ratio Lower Upper
 105 100
 120 0.0 23.6 71.0#



#86
 p-Isopropyltoluene
 Concen: 5.875 ug/l
 RT: 13.457 min Scan# 2018
 Delta R.T. 0.000 min
 Lab File: VD079659.D
 Acq: 08 Aug 2024 00:51

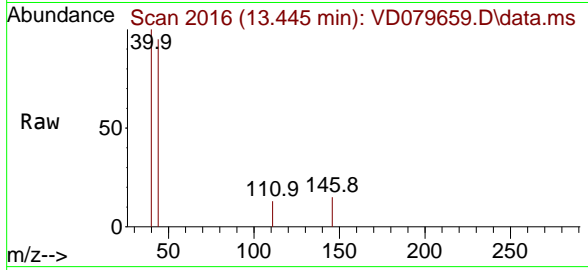
Tgt Ion:119 Resp: 259
 Ion Ratio Lower Upper
 119 100
 134 0.0 13.7 41.1#
 91 0.0 10.7 32.1#



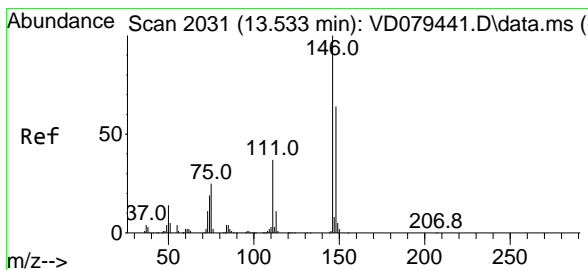
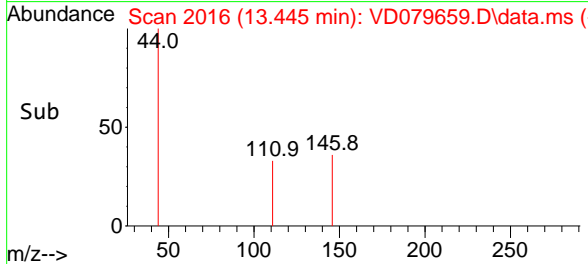
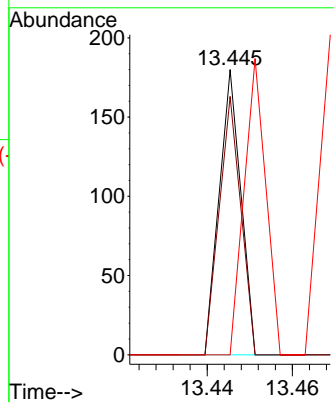


#87
 1,3-Dichlorobenzene
 Concen: 1.076 ug/l
 RT: 13.445 min Scan# 2016
 Delta R.T. -0.006 min
 Lab File: VD079659.D
 Acq: 08 Aug 2024 00:51

Instrument : MSVOA_D
 ClientSampleId :

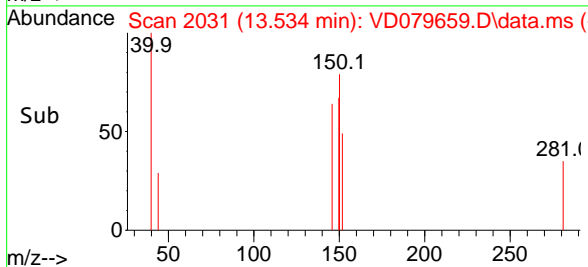
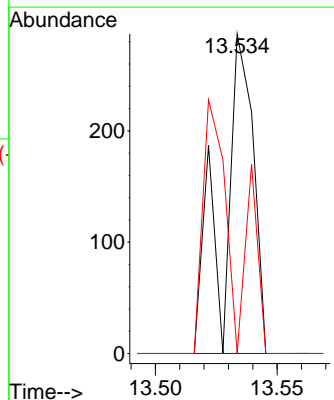
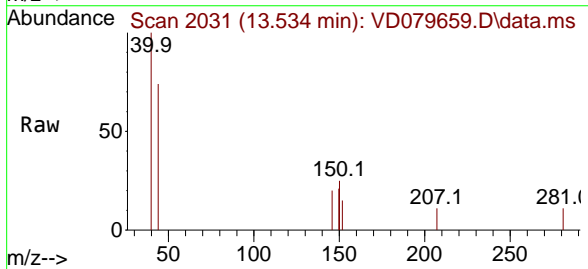


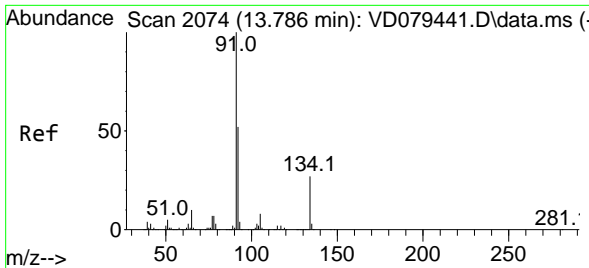
Tgt Ion	Resp	Lower	Upper
146	100		
111	90.6	18.5	55.5#
148	103.1	30.9	92.8#



#88
 1,4-Dichlorobenzene
 Concen: 4.171 ug/l
 RT: 13.534 min Scan# 2031
 Delta R.T. -0.000 min
 Lab File: VD079659.D
 Acq: 08 Aug 2024 00:51

Tgt Ion	Resp	Lower	Upper
146	100		
111	0.0	17.5	52.6#
148	82.8	31.4	94.2



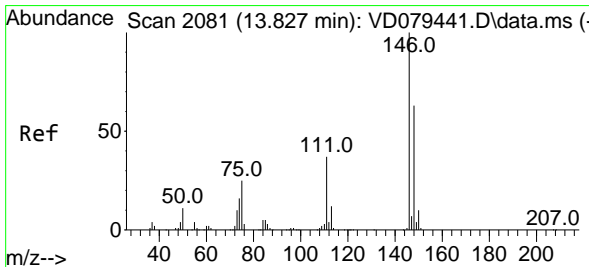
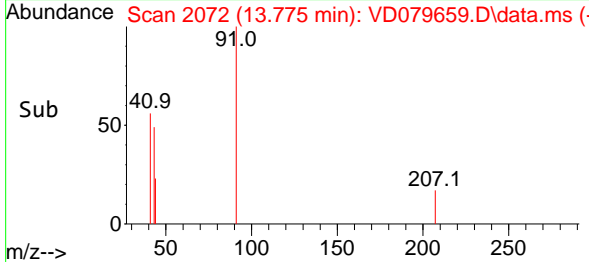
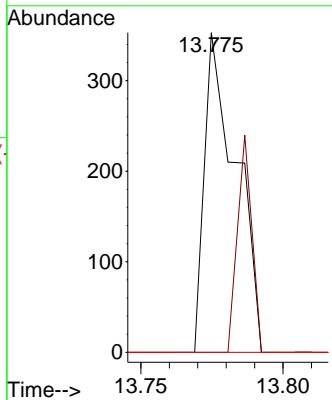
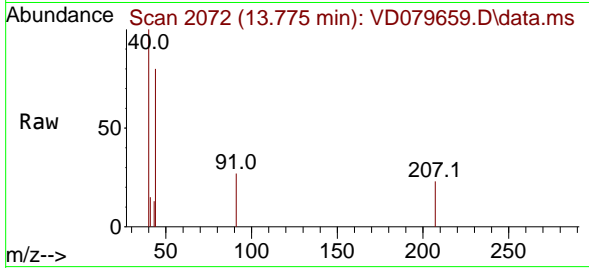


#89
 n-Butylbenzene
 Concen: 6.049 ug/l
 RT: 13.775 min Scan# 2072
 Delta R.T. -0.006 min
 Lab File: VD079659.D
 Acq: 08 Aug 2024 00:51

Instrument : MSVOA_D
 ClientSampleId :

Tgt Ion: 91 Resp: 272

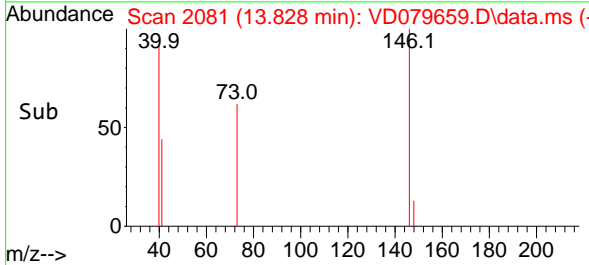
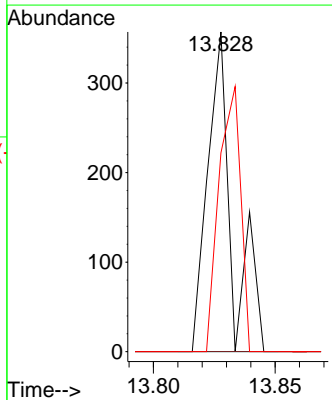
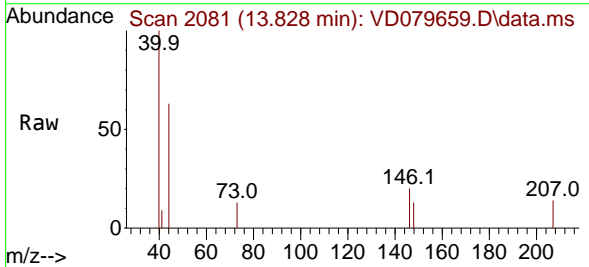
Ion	Ratio	Lower	Upper
91	100		
92	31.3	25.7	77.0
134	0.0	13.6	40.8#

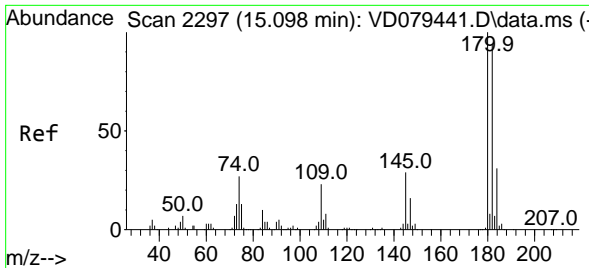


#91
 1,2-Dichlorobenzene
 Concen: 4.877 ug/l
 RT: 13.828 min Scan# 2081
 Delta R.T. -0.000 min
 Lab File: VD079659.D
 Acq: 08 Aug 2024 00:51

Tgt Ion: 146 Resp: 248

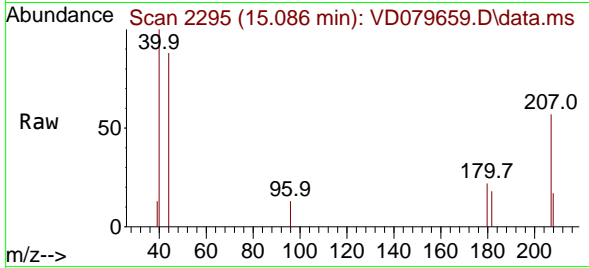
Ion	Ratio	Lower	Upper
146	100		
111	0.0	19.1	57.1#
148	73.8	31.1	93.5



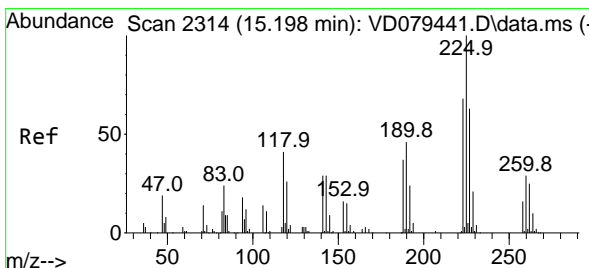
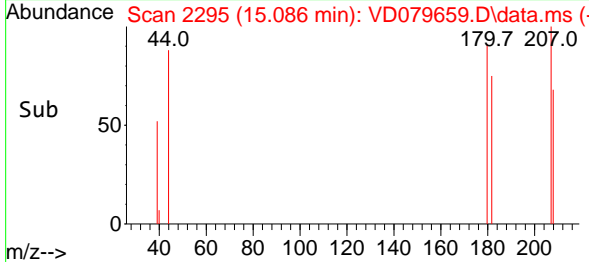
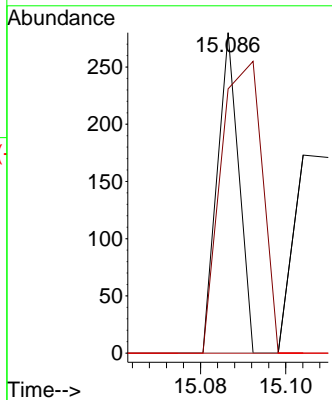


#93
 1,2,4-Trichlorobenzene
 Concen: 3.090 ug/l
 RT: 15.086 min Scan# 21
 Delta R.T. -0.006 min
 Lab File: VD079659.D
 Acq: 08 Aug 2024 00:51

Instrument :
 MSVOA_D
 ClientSampleId :

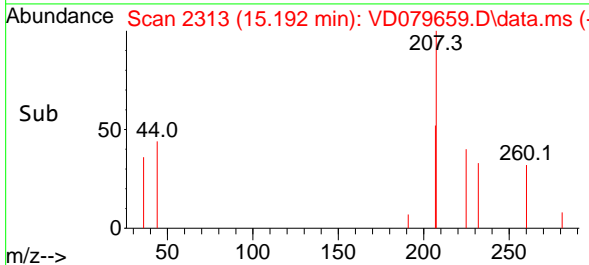
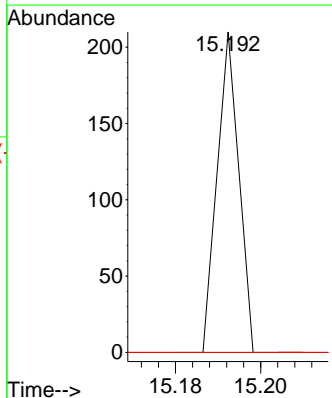
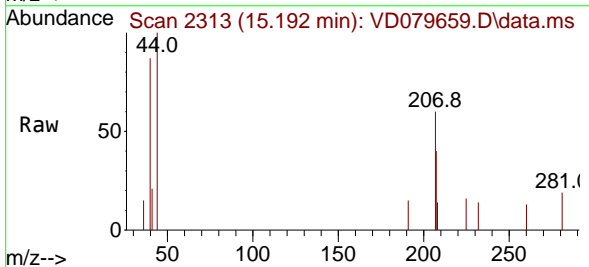


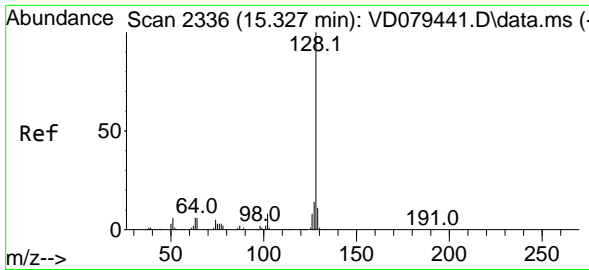
Tgt Ion:180 Resp: 99
 Ion Ratio Lower Upper
 180 100
 182 173.7 46.9 140.7#
 145 0.0 14.0 41.9#



#94
 Hexachlorobutadiene
 Concen: 4.280 ug/l
 RT: 15.192 min Scan# 2313
 Delta R.T. -0.006 min
 Lab File: VD079659.D
 Acq: 08 Aug 2024 00:51

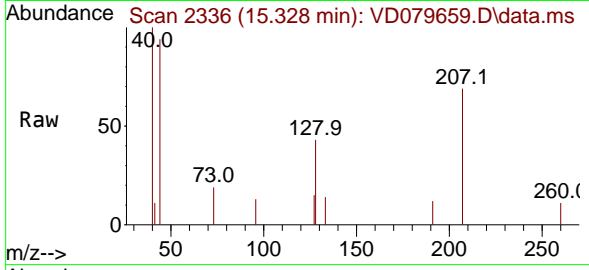
Tgt Ion:225 Resp: 74
 Ion Ratio Lower Upper
 225 100
 223 0.0 33.3 99.9#
 227 0.0 33.6 100.6#





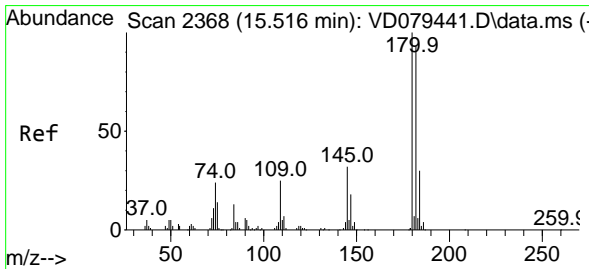
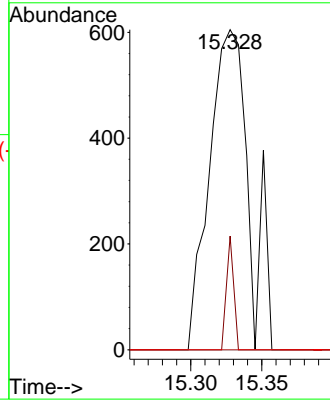
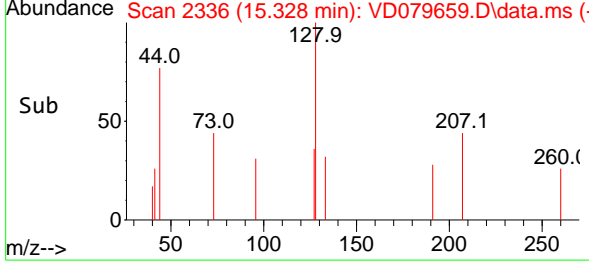
#95
 Naphthalene
 Concen: 21.244 ug/l
 RT: 15.328 min Scan# 21
 Delta R.T. -0.000 min
 Lab File: VD079659.D
 Acq: 08 Aug 2024 00:51

Instrument :
 MSVOA_D
 ClientSampleId :

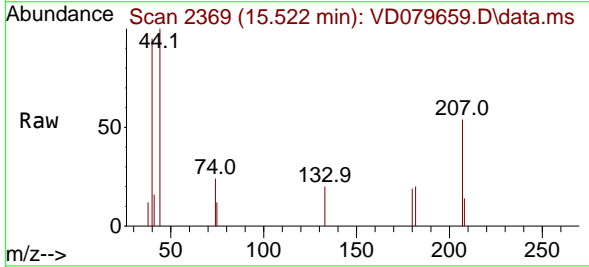


Tgt Ion:128 Resp: 1178

Ion	Ratio	Lower	Upper
128	100		
127	35.5	10.2	15.4#
129	0.0	8.5	12.7#



#96
 1,2,3-Trichlorobenzene
 Concen: 5.145 ug/l
 RT: 15.522 min Scan# 2369
 Delta R.T. -0.000 min
 Lab File: VD079659.D
 Acq: 08 Aug 2024 00:51



Tgt Ion:180 Resp: 145

Ion	Ratio	Lower	Upper
180	100		
182	235.9	47.8	143.3#
145	0.0	16.1	48.2#

