

Data Path : Z:\voasrv\HPCHEM1\MSVOA\_D\Data\VD080724\  
 Data File : VD079659.D  
 Acq On : 08 Aug 2024 00:51  
 Operator : RP/MD  
 Sample : P3488-01  
 Misc : 5.08G/5.0ml/MSVOA\_D/SOIL/A  
 ALS Vial : 29 Sample Multiplier: 1

Instrument :  
 MSVOA\_D  
 ClientSampleId :  
 HD-01-080624

Integration Parameters: RTEINT.P

Integrator: RTE  
 Smoothing : ON Filtering: 5  
 Sampling : 1 Min Area: 3 % of largest Peak  
 Start Thrs: 0.2 Max Peaks: 100  
 Stop Thrs : 0 Peak Location: TOP

If leading or trailing edge < 100 prefer < Baseline drop else tangent >  
 Peak separation: 5

Method : Z:\voasrv\HPCHEM1\MSVOA\_D\Method\82D072924S.M  
 Title : SW846 8260

Signal : TIC: VD079659.D\data.ms

peak #	R.T. min	first scan	max scan	last scan	PK TY	peak height	corr. area	corr. % max.	% of total
1	1.740	19	26	40	rVB	402679	631132	100.00%	88.386%
2	7.810	1051	1058	1062	rBV3	3078	7078	1.12%	0.991%
3	8.769	1216	1221	1228	rBV2	4454	7768	1.23%	1.088%
4	9.022	1258	1264	1269	rBV5	4382	8413	1.33%	1.178%
5	10.269	1471	1476	1481	rVB5	7504	14562	2.31%	2.039%
6	11.581	1692	1699	1706	rBV4	9211	16961	2.69%	2.375%
7	12.569	1863	1867	1874	rVB4	5817	10006	1.59%	1.401%
8	12.728	1888	1894	1900	rBV4	5020	8969	1.42%	1.256%
9	13.516	2023	2028	2033	rBV2	5724	9176	1.45%	1.285%

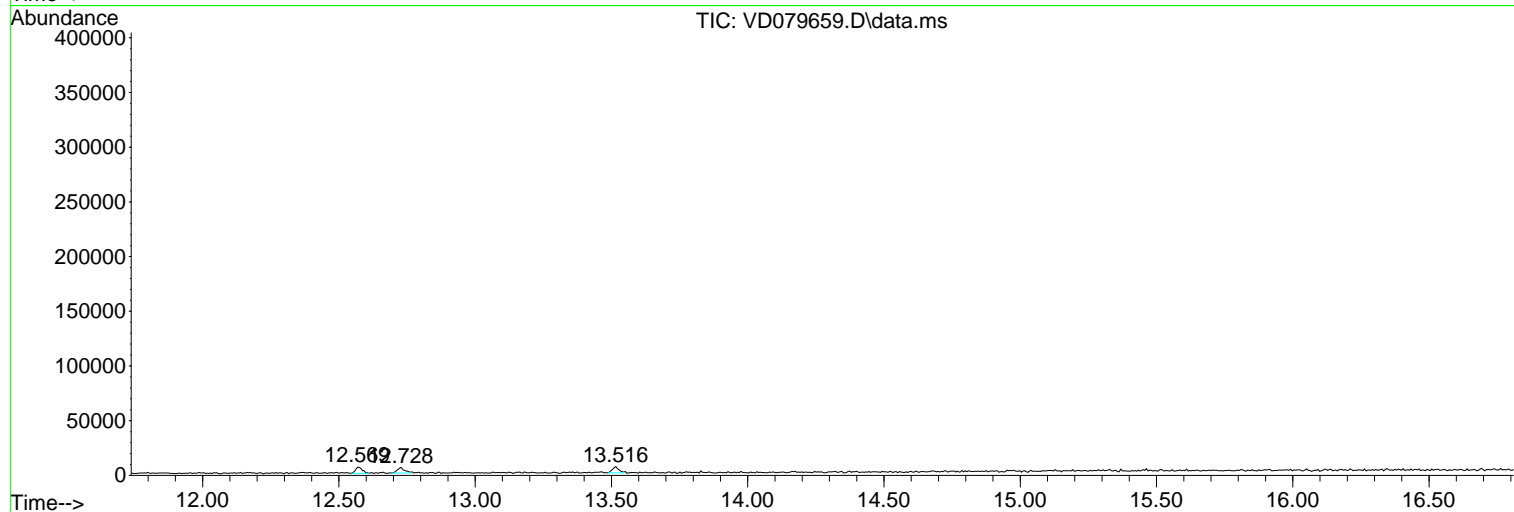
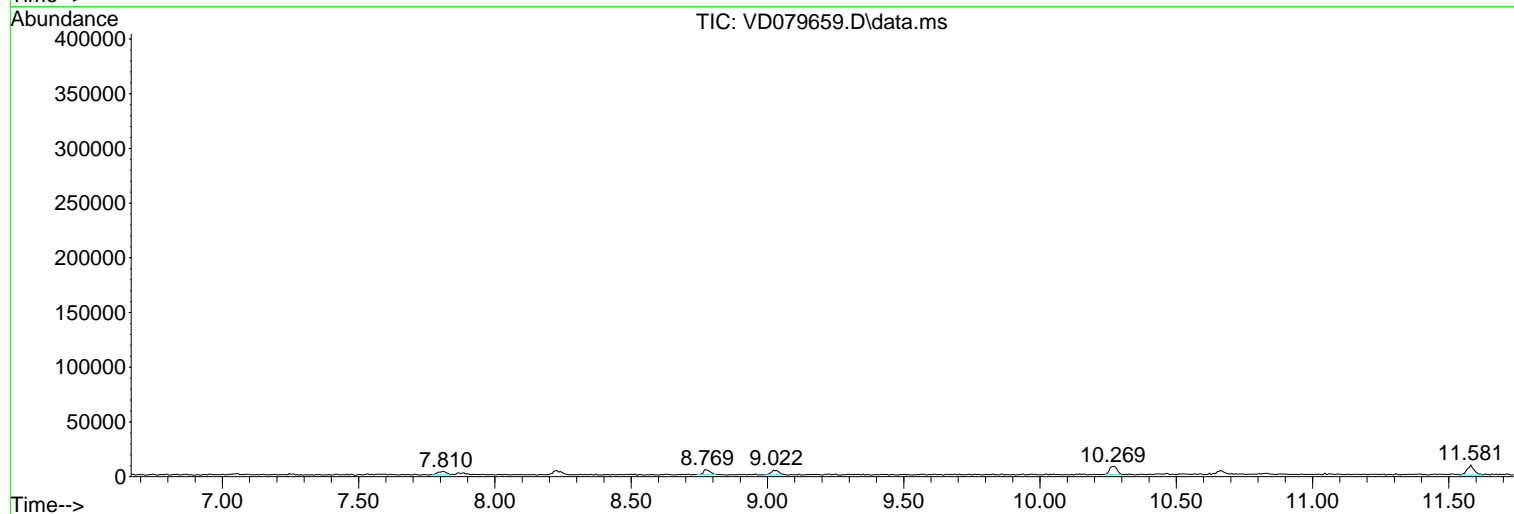
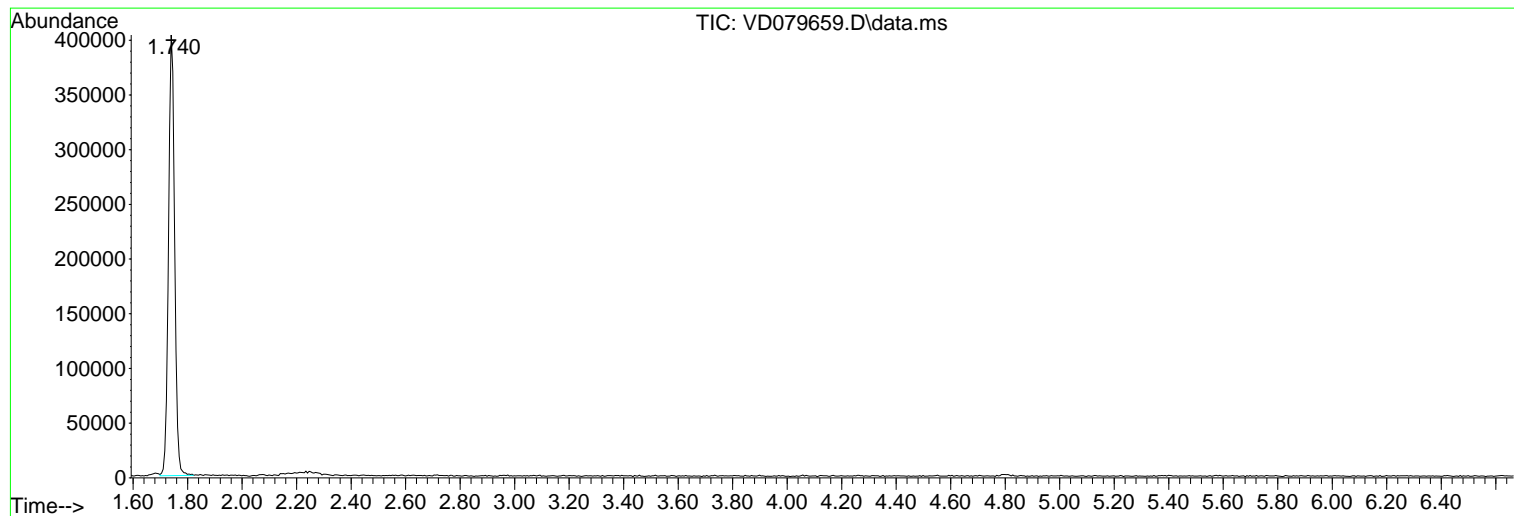
Sum of corrected areas: 714065

Data Path : Z:\voasrv\HPCHEM1\MSVOA\_D\Data\VD080724\  
Data File : VD079659.D  
Acq On : 08 Aug 2024 00:51  
Operator : RP/MD  
Sample : P3488-01  
Misc : 5.08G/5.0ml/MSVOA\_D/SOIL/A  
ALS Vial : 29 Sample Multiplier: 1

Instrument :  
MSVOA\_D  
ClientSampleId :  
HD-01-080624

Quant Method : Z:\voasrv\HPCHEM1\MSVOA\_D\Method\82D072924S.M  
Quant Title : SW846 8260

TIC Library : C:\Database\NIST20.L  
TIC Integration Parameters: LSCINT.P



Data Path : Z:\voasrv\HPCHEM1\MSVOA\_D\Data\VD080724\  
 Data File : VD079659.D  
 Acq On : 08 Aug 2024 00:51  
 Operator : RP/MD  
 Sample : P3488-01  
 Misc : 5.08G/5.0ml/MSVOA\_D/SOIL/A  
 ALS Vial : 29 Sample Multiplier: 1

Instrument :  
 MSVOA\_D  
 ClientSampleId :  
 HD-01-080624

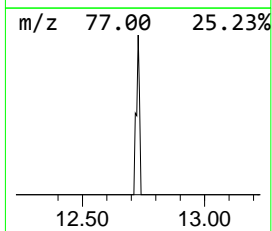
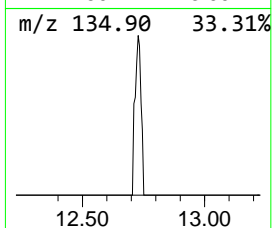
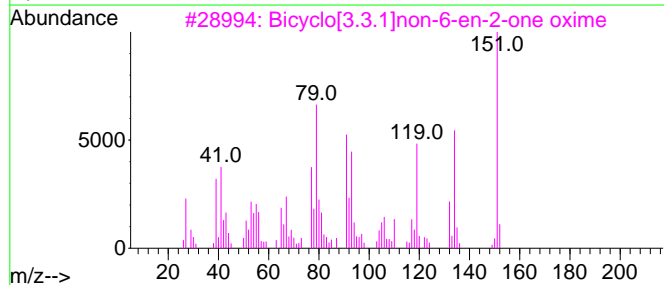
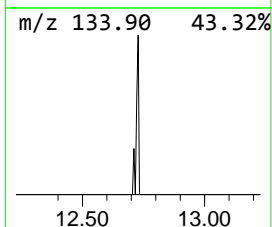
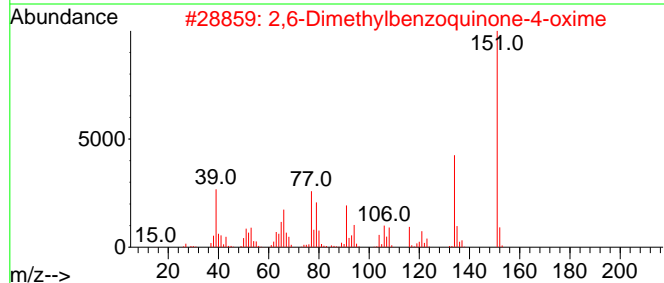
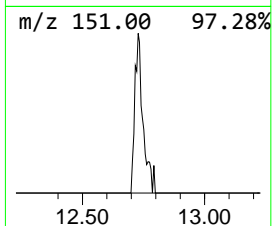
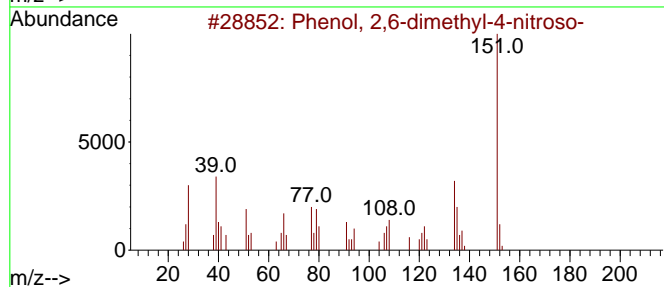
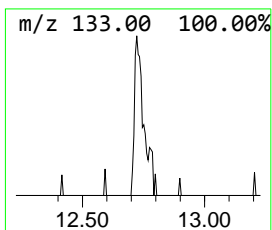
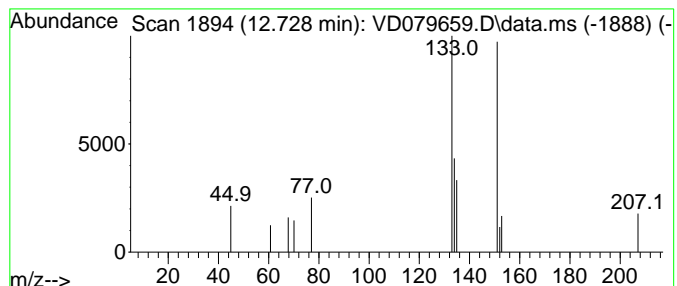
Quant Method : Z:\voasrv\HPCHEM1\MSVOA\_D\Method\82D072924S.M  
 Quant Title : SW846 8260

TIC Library : C:\Database\NIST20.L  
 TIC Integration Parameters: LSCINT.P

\*\*\*\*\*  
 Peak Number 2 unknown12.728 Concentration Rank 2

R.T.	EstConc	Area	Relative to ISTD	R.T.
12.728	48.87 ug/l	8969	1,4-Dichlorobenzene-d4	13.516

Hit#	of	5	Tentative ID	MW	MolForm	CAS#	Qual
1			Phenol, 2,6-dimethyl-4-nitroso-	151	C8H9NO2	013331-93-6	47
2			2,6-Dimethylbenzoquinone-4-oxime	151	C8H9NO2	004965-29-1	47
3			Bicyclo[3.3.1]non-6-en-2-one oxime	151	C9H13NO	1000186-04-7	43
4			Oxime-, methoxy-phenyl-	151	C8H9NO2	1000222-86-6	38
5			4,6-Dimethylpyridine-3-carboxyli...	151	C8H9NO2	022047-86-5	38



Data Path : Z:\voasrv\HPCHEM1\MSVOA\_D\Data\VD080724\  
Data File : VD079659.D  
Acq On : 08 Aug 2024 00:51  
Operator : RP/MD  
Sample : P3488-01  
Misc : 5.08G/5.0ml/MSVOA\_D/SOIL/A  
ALS Vial : 29 Sample Multiplier: 1

Instrument :  
MSVOA\_D  
ClientSampleId :  
HD-01-080624

Quant Method : Z:\voasrv\HPCHEM1\MSVOA\_D\Method\82D072924S.M  
Quant Title : SW846 8260

TIC Library : C:\Database\NIST20.L  
TIC Integration Parameters: LSCINT.P

TIC Top Hit name	RT	EstConc	Units	Response	--Internal Standard--			
					#	RT	Resp	Conc
unknown	12.728	48.9	ug/l	8969	4	13.516	9176	50.0