

Data Path : Z:\VOASRV\HPCHEM1\MSVOA D\DATA\VD081820\
 Data File : VD066309.D
 Acq On : 19 Aug 2020 07:39
 Operator : VA/SY
 Sample : L3712-06
 Misc : 7.01G/5.00ml/MSVOA D/SOIL
 ALS Vial : 45 Sample Multiplier: 1

Instrument :
 MSVOA_D
 ClientSampled :
 VB-25203

Manual Integrations
 APPROVED

MMDadoda
 8/19/2020 5:23:39 PM

Quant Time: Aug 19 09:02:54 2020
 Quant Method : Z:\VOASRV\HPCHEM1\MSVOA_D\METHOD\82D080520S.M
 Quant Title : SW846 8260
 QLast Update : Wed Aug 05 13:49:25 2020
 Response via : Initial Calibration

Internal Standards	R.T.	QIon	Response	Conc	Units	Dev(Min)
1) Pentafluorobenzene	7.98	168	178803	50.00	ug/l	0.00
34) 1,4-Difluorobenzene	8.86	114	290431	50.00	ug/l	0.00
63) Chlorobenzene-d5	11.64	117	97958	50.00	ug/l	0.00
72) 1,4-Dichlorobenzene-d4	13.58	152	67874	50.00	ug/l	0.00
System Monitoring Compounds						
33) 1,2-Dichloroethane-d4	8.32	65	95614	59.94	ug/l	-0.01
Spiked Amount	50.000		Recovery	=	119.88%	
35) Dibromofluoromethane	7.91	113	102074	55.48	ug/l	0.00
Spiked Amount	50.000		Recovery	=	110.96%	
50) Toluene-d8	10.34	98	83310	12.27	ug/l	0.00
Spiked Amount	50.000		Recovery	=	24.54%	
62) 4-Bromofluorobenzene	12.63	95	51412	21.01	ug/l	0.00
Spiked Amount	50.000		Recovery	=	42.02%	
Target Compounds						
8) Diethyl Ether	3.70	74	3489	4.372	ug/l	86
16) Acetone	4.17	43	2266m	7.487	ug/l	
20) Methylene Chloride	4.96	84	60465	33.219	ug/l	96

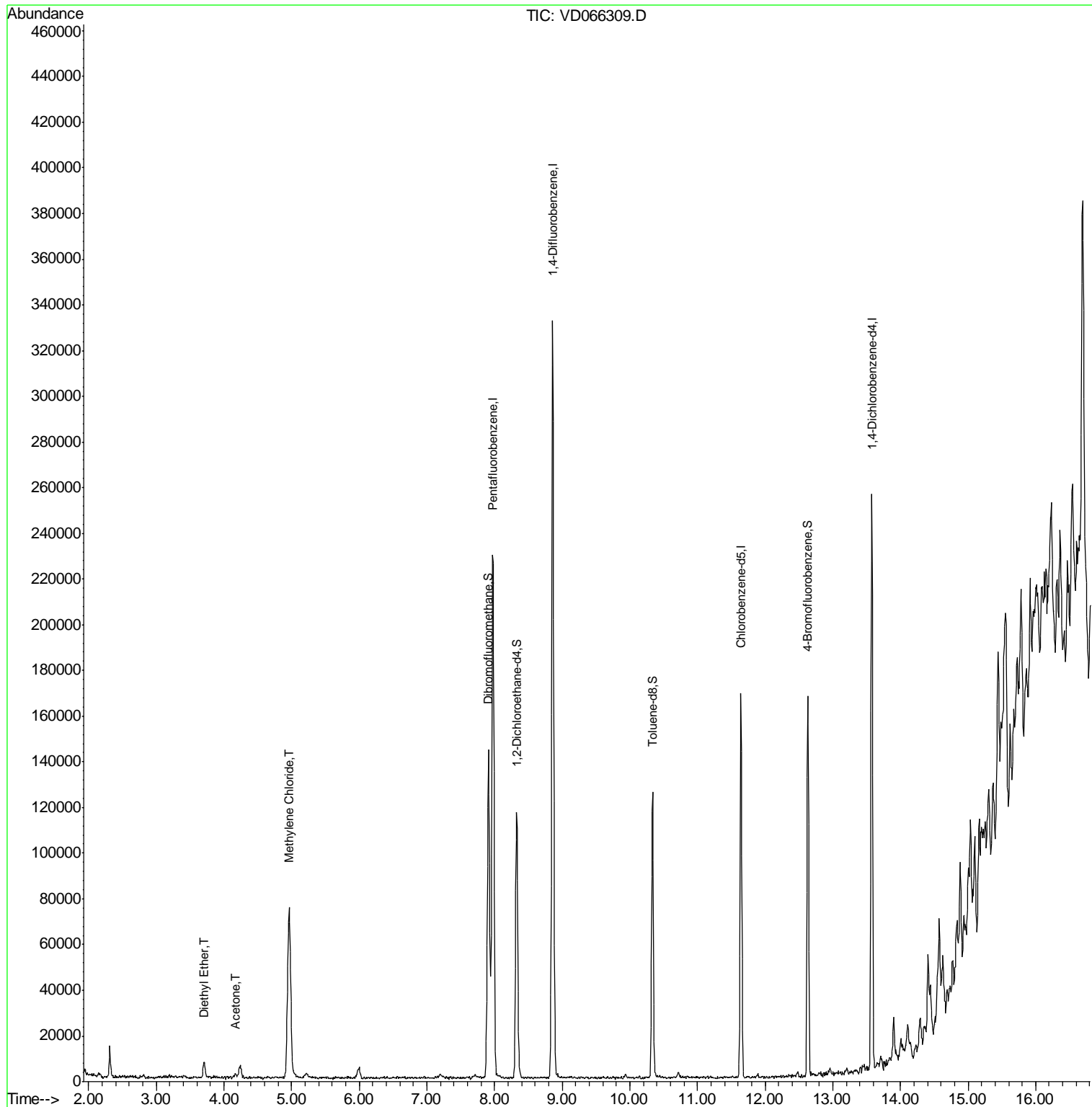
(#) = qualifier out of range (m) = manual integration (+) = signals summed

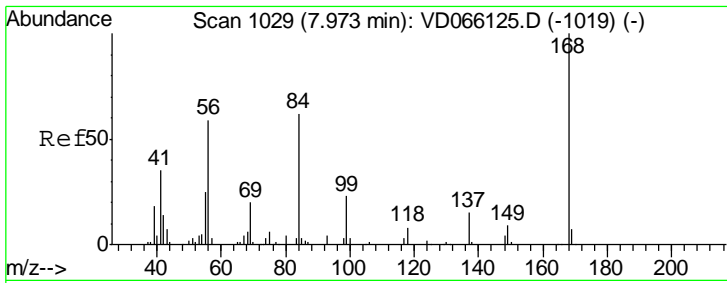
Data Path : Z:\VOASRV\HPCHEM1\MSVOA D\DATA\VD081820\
 Data File : VD066309.D
 Acq On : 19 Aug 2020 07:39
 Operator : VA/SY
 Sample : L3712-06
 Misc : 7.01G/5.00ml/MSVOA D/SOIL
 ALS Vial : 45 Sample Multiplier: 1

Instrument :
 MSVOA_D
Client Sampled :
 VB-25203

Manual Integrations
APPROVED
 MMDadoda
 8/19/2020 5:23:39 PM

Quant Time: Aug 19 09:02:54 2020
 Quant Method : Z:\VOASRV\HPCHEM1\MSVOA_D\METHOD\82D080520S.M
 Quant Title : SW846 8260
 QLast Update : Wed Aug 05 13:49:25 2020
 Response via : Initial Calibration





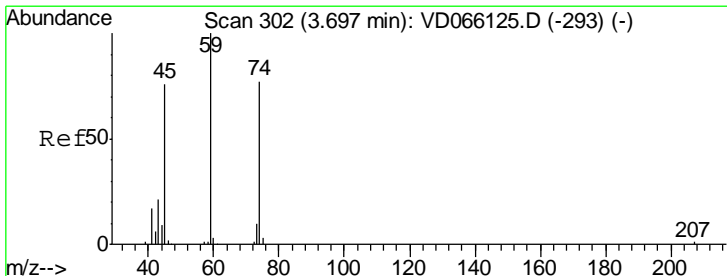
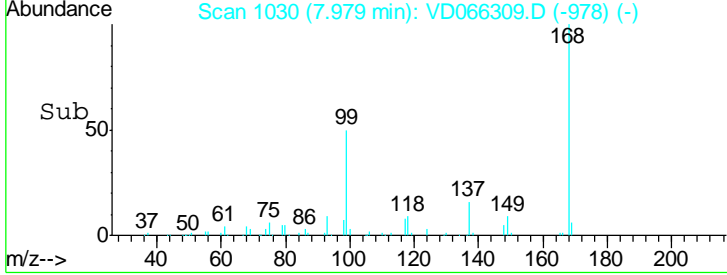
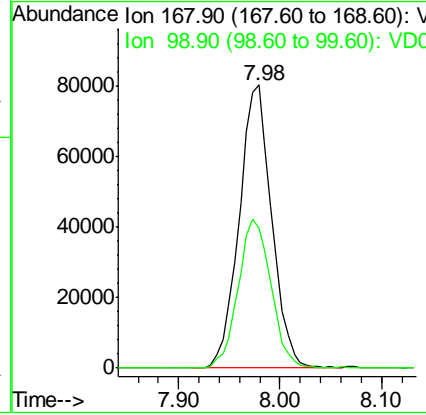
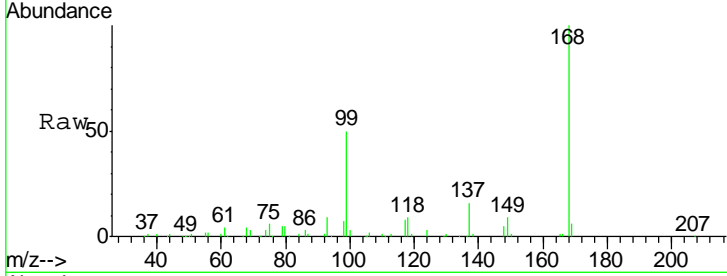
#1
 Pentafluorobenzene
 Concen: 50.000 ug/l
 RT: 7.98 min Scan# 1030
 Delta R.T. 0.01 min
 Lab File: VD066309.D
 Acq: 19 Aug 2020 07:39

Instrument : MSVOA_D
 ClientSampled : VB-25203

Tgt Ion	Resp	Lower	Upper
168	100		
99	49.6	42.2	63.4

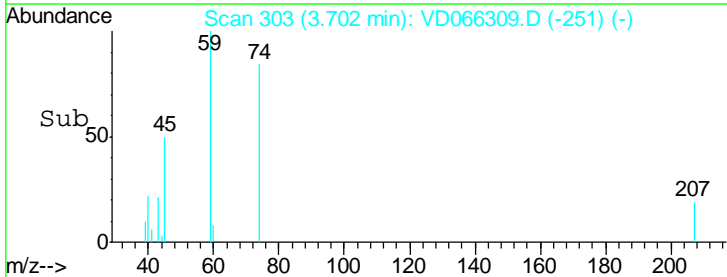
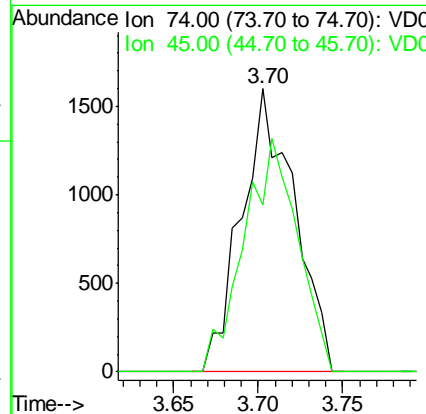
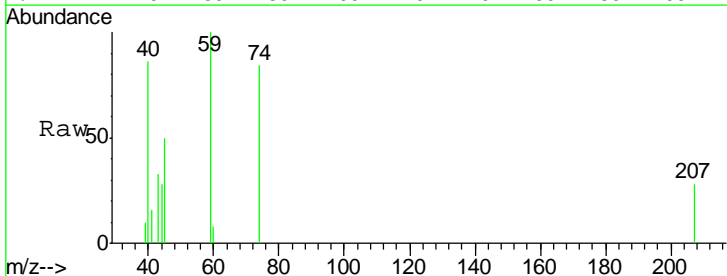
Manual Integrations
 APPROVED

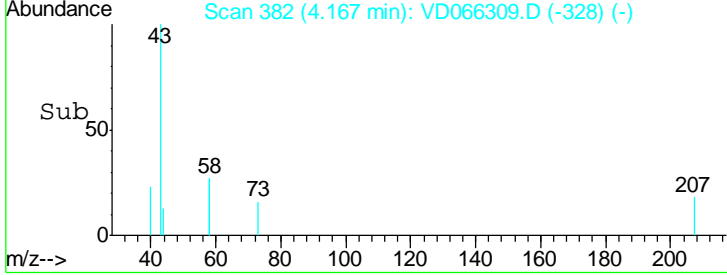
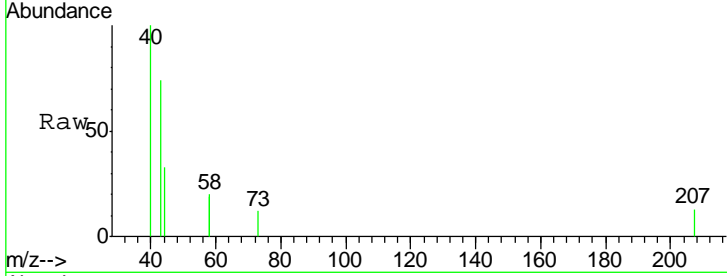
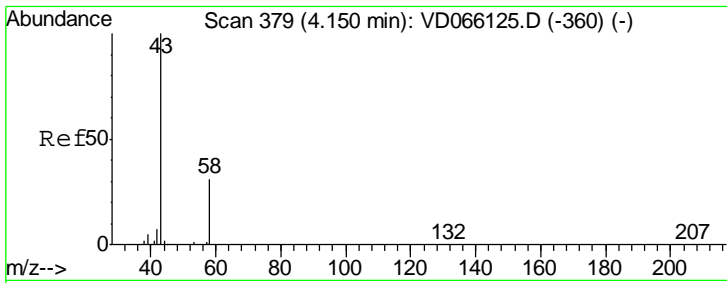
MMDadoda
 8/19/2020 5:23:39 PM



#8
 Diethyl Ether
 Concen: 4.372 ug/l
 RT: 3.70 min Scan# 303
 Delta R.T. 0.01 min
 Lab File: VD066309.D
 Acq: 19 Aug 2020 07:39

Tgt Ion	Resp	Lower	Upper
74	100		
45	83.5	48.4	145.2



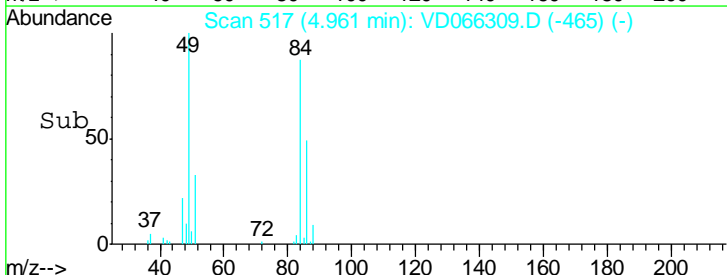
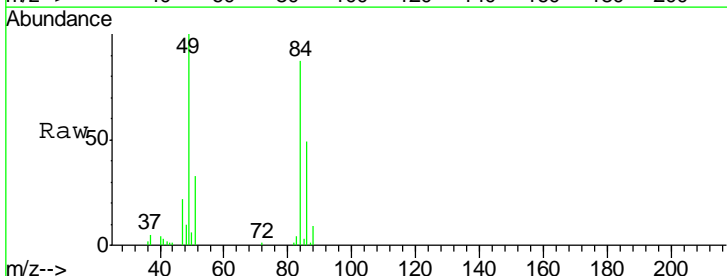
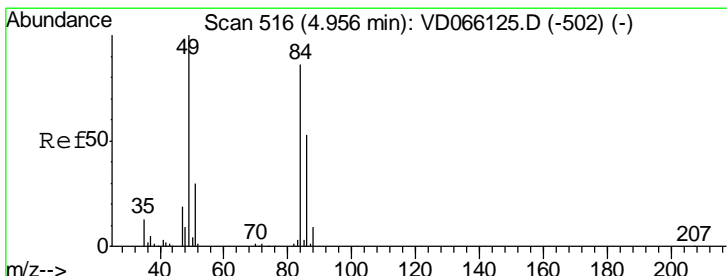
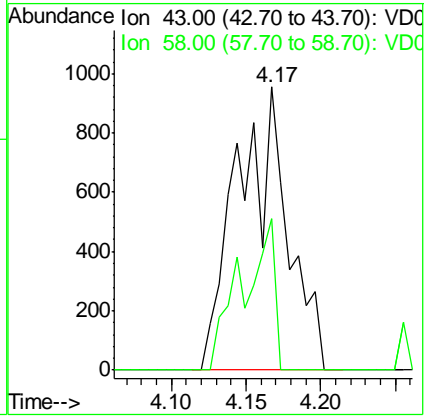


#16
 Acetone
 Concen: 7.487 ug/l m
 RT: 4.17 min Scan# 382
 Delta R.T. 0.02 min
 Lab File: VD066309.D
 Acq: 19 Aug 2020 07:39

Tgt Ion	Resp	Lower	Upper
43	100		
58	26.8	24.7	37.1

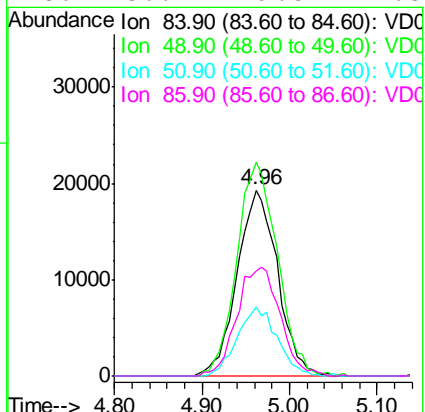
Instrument :
 MSVOA_D
ClientSampled :
 VB-25203

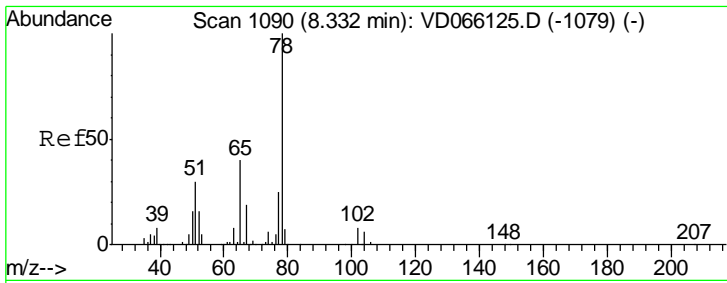
Manual Integrations
APPROVED
 MMDadoda
 8/19/2020 5:23:39 PM



#20
 Methylene Chloride
 Concen: 33.219 ug/l
 RT: 4.96 min Scan# 517
 Delta R.T. 0.01 min
 Lab File: VD066309.D
 Acq: 19 Aug 2020 07:39

Tgt Ion	Resp	Lower	Upper
84	100		
49	114.8	93.5	140.3
51	37.3	28.2	42.4
86	56.7	49.5	74.3





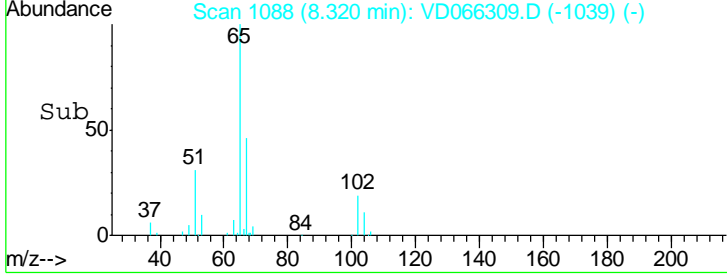
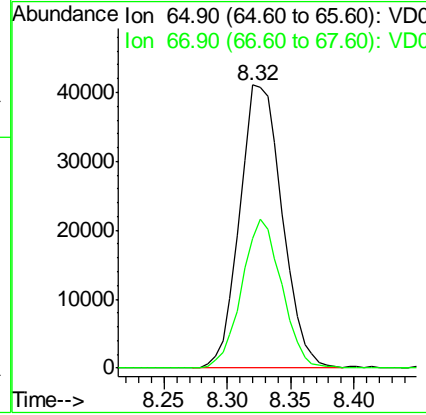
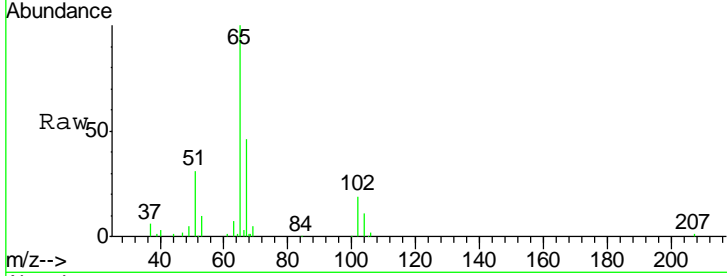
#33
 1,2-Dichloroethane-d4
 Concen: 59.939 ug/l
 RT: 8.32 min Scan# 1088
 Delta R.T. -0.01 min
 Lab File: VD066309.D
 Acq: 19 Aug 2020 07:39

Instrument :
 MSVOA_D
ClientSampled :
 VB-25203

Tgt Ion	Resp	Lower	Upper
65	100		
67	49.6	0.0	104.6

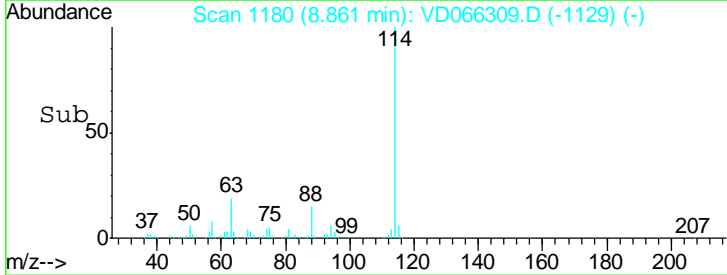
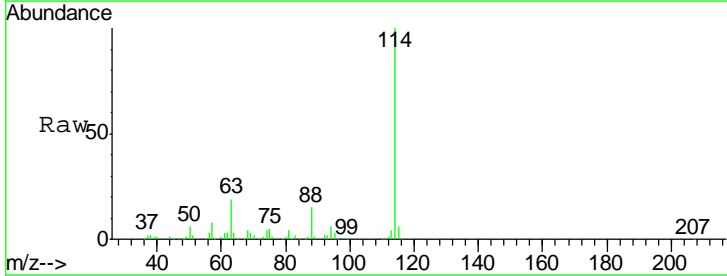
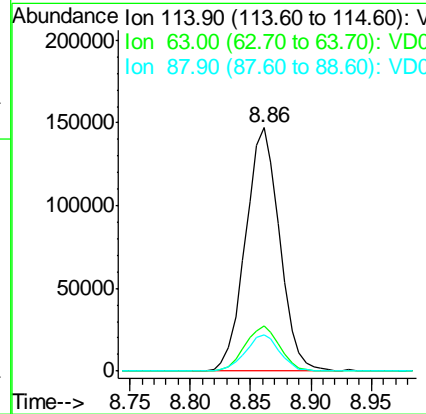
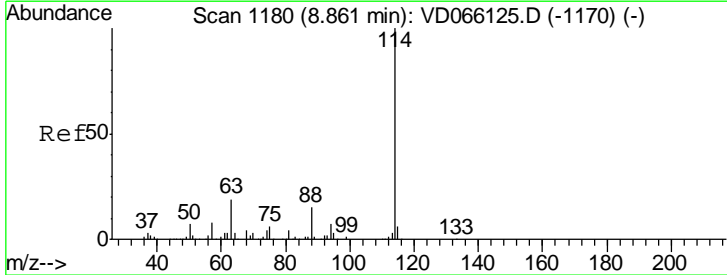
Manual Integrations
APPROVED

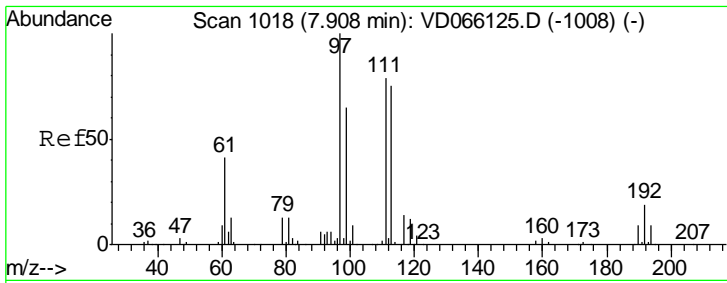
MMDadoda
 8/19/2020 5:23:39 PM



#34
 1,4-Difluorobenzene
 Concen: 50.000 ug/l
 RT: 8.86 min Scan# 1180
 Delta R.T. -0.00 min
 Lab File: VD066309.D
 Acq: 19 Aug 2020 07:39

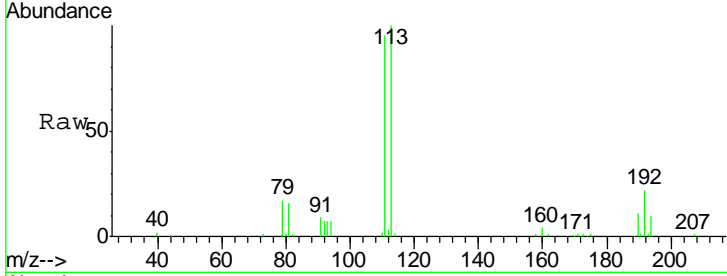
Tgt Ion	Resp	Lower	Upper
114	100		
63	18.5	0.0	38.6
88	15.1	0.0	30.0





#35
 Dibromofluoromethane
 Concen: 55.479 ug/l
 RT: 7.91 min Scan# 1019
 Delta R.T. 0.01 min
 Lab File: VD066309.D
 Acq: 19 Aug 2020 07:39

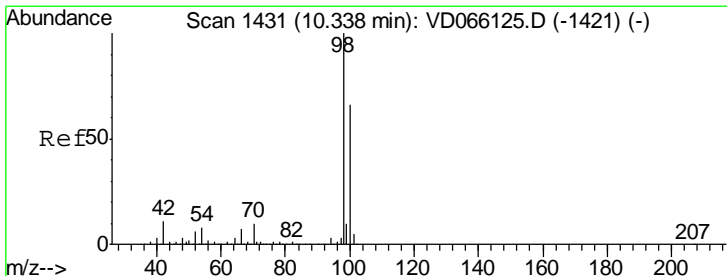
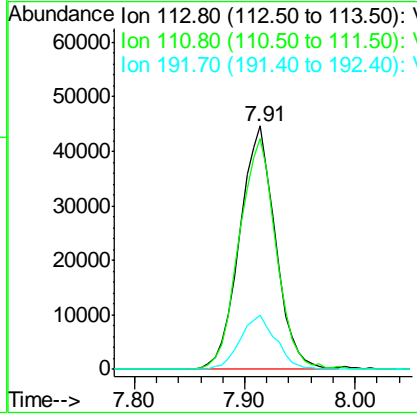
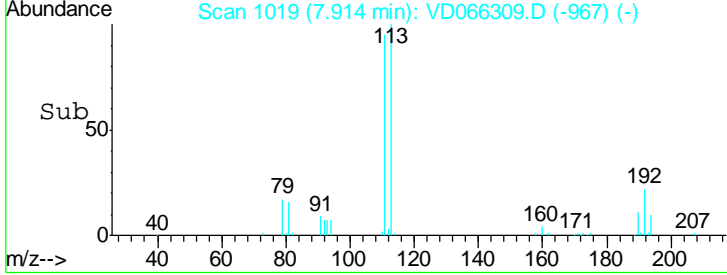
Instrument : MSVOA_D
 ClientSampled : VB-25203



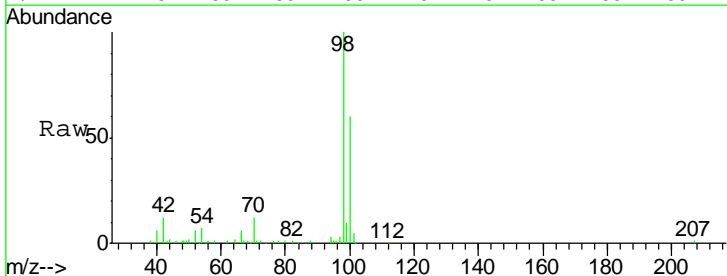
Tgt Ion: 113 Resp: 102074

Ion	Ratio	Lower	Upper
113	100		
111	97.3	80.7	121.1
192	22.0	18.4	27.6

Manual Integrations
APPROVED
 MMDadoda
 8/19/2020 5:23:39 PM

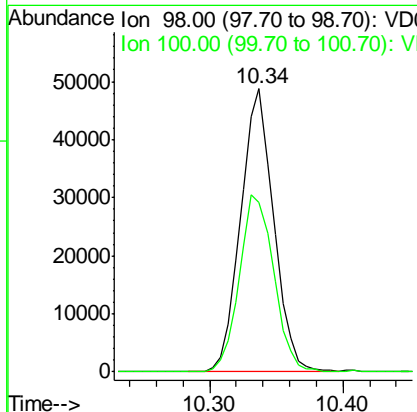
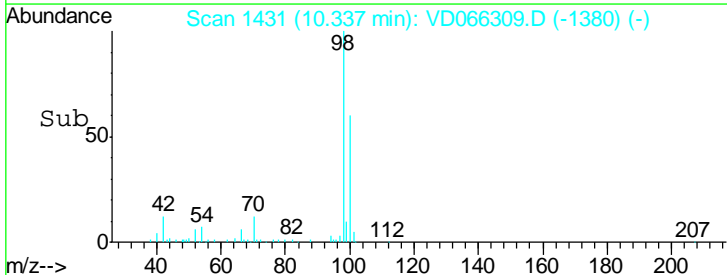


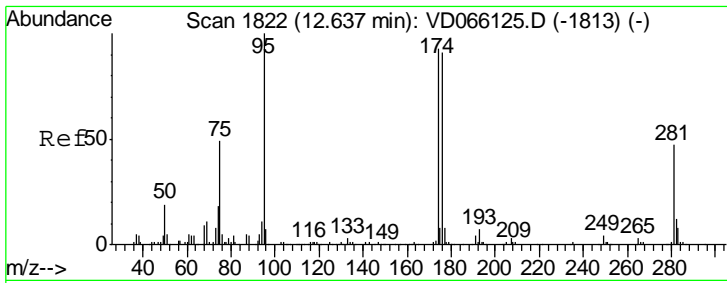
#50
 Toluene-d8
 Concen: 12.270 ug/l
 RT: 10.34 min Scan# 1431
 Delta R.T. -0.00 min
 Lab File: VD066309.D
 Acq: 19 Aug 2020 07:39



Tgt Ion: 98 Resp: 83310

Ion	Ratio	Lower	Upper
98	100		
100	65.2	52.6	78.8





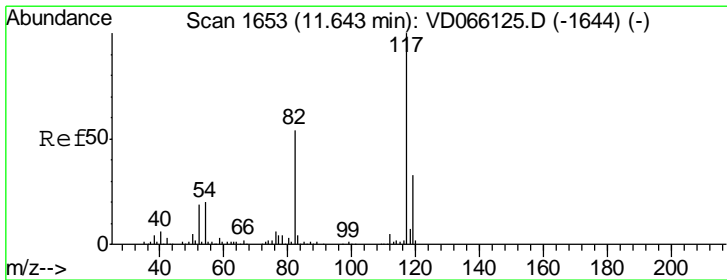
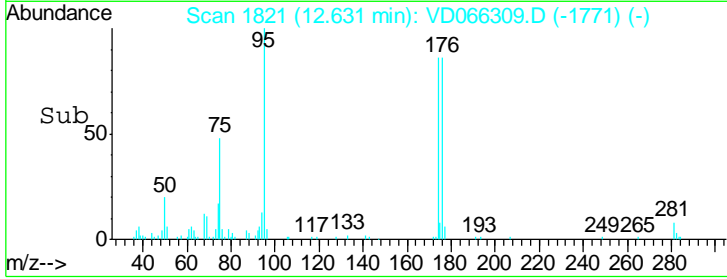
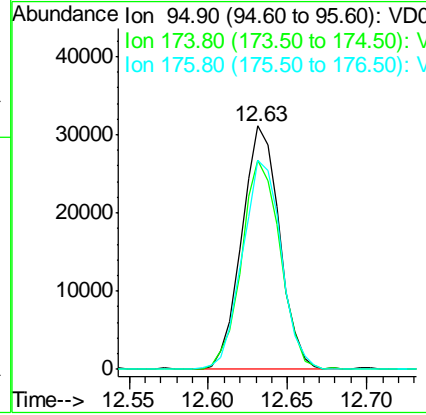
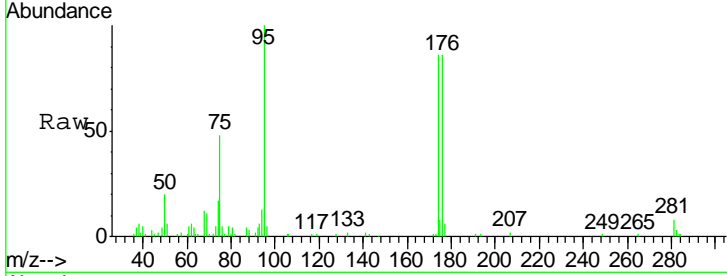
#62
 4-Bromofluorobenzene
 Concen: 21.007 ug/l
 RT: 12.63 min Scan# 1821
 Delta R.T. -0.01 min
 Lab File: VD066309.D
 Acq: 19 Aug 2020 07:39

Instrument : MSVOA_D
 Client Sampled : VB-25203

Tgt Ion	Resp	Lower	Upper
95	51412		
95	100		
174	87.8	0.0	180.8
176	88.2	0.0	181.2

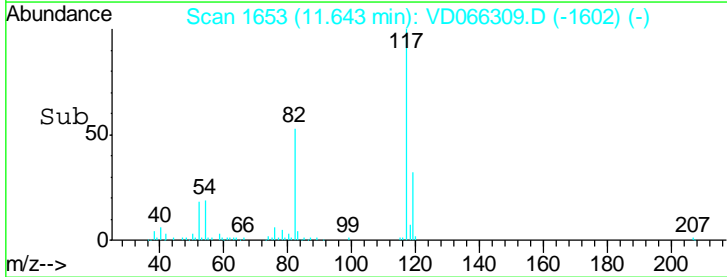
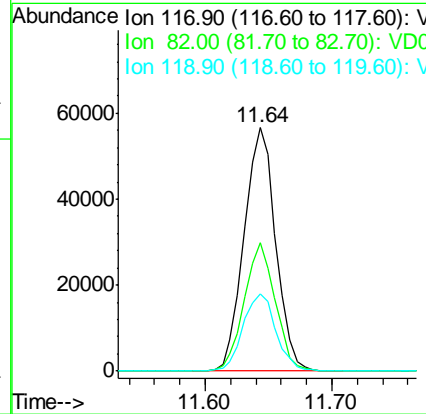
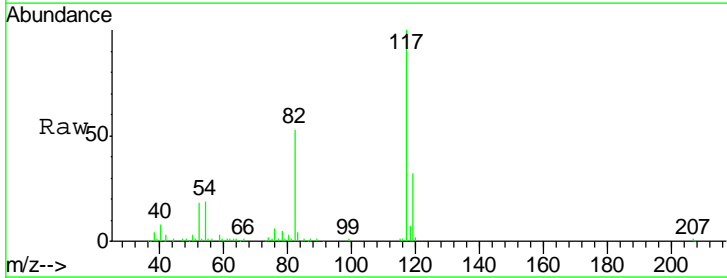
Manual Integrations
 APPROVED

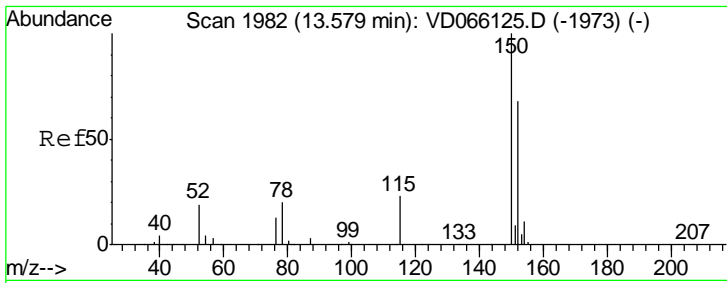
MMDadoda
 8/19/2020 5:23:39 PM



#63
 Chlorobenzene-d5
 Concen: 50.000 ug/l
 RT: 11.64 min Scan# 1653
 Delta R.T. -0.00 min
 Lab File: VD066309.D
 Acq: 19 Aug 2020 07:39

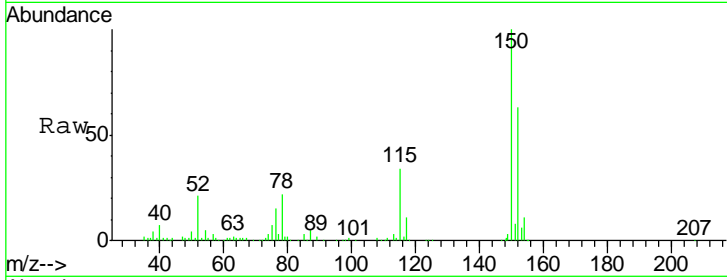
Tgt Ion	Resp	Lower	Upper
117	97958		
117	100		
82	52.5	43.0	64.4
119	31.7	26.1	39.1





#72
 1,4-Dichlorobenzene-d4
 Concen: 50.000 ug/l
 RT: 13.58 min Scan# 1982
 Delta R.T. -0.00 min
 Lab File: VD066309.D
 Acq: 19 Aug 2020 07:39

Instrument : MSVOA_D
 ClientSampled : VB-25203



Tot Ion:152 Resp: 67874

Ion	Ratio	Lower	Upper
152	100		
115	58.4	28.0	83.9
150	162.9	0.0	346.4

Manual Integrations
APPROVED
 MMDadoda
 8/19/2020 5:23:39 PM

