

Data Path : Z:\voasrv\HPCHEM1\MSVOA_D\Data\VD082021\
 Data File : VD070211.D
 Acq On : 20 Aug 2021 19:11
 Operator : VA/SY
 Sample : M3463-17
 Misc : 4.13G/5.00ml/MSVOA_D/SOIL
 ALS Vial : 18 Sample Multiplier: 1

Instrument :
 MSVOA_D
 ClientSampleId :
 SWCS-18-0002

Integration Parameters: RTEINT.P

Integrator: RTE
 Smoothing : ON
 Sampling : 1
 Start Thrs : 0.2
 Stop Thrs : 0

Filtering: 5
 Min Area: 3 % of largest Peak
 Max Peaks: 100
 Peak Location: TOP

If leading or trailing edge < 100 prefer < Baseline drop else tangent >
 Peak separation: 5

Method : Z:\voasrv\HPCHEM1\MSVOA_D\Method\82D081321S.M
 Title : SW846 8260

Signal : TIC: VD070211.D\data.ms

peak #	R.T. min	first scan	max scan	last scan	PK TY	peak height	corr. area	corr. % max.	% of total
1	1.950	3	5	9	rVB	122472	125172	4.54%	0.883%
2	2.168	32	42	46	rBV2	22174	35453	1.29%	0.250%
3	2.321	63	68	69	rBV2	24372	39828	1.44%	0.281%
4	2.344	69	72	79	rVB	47234	69007	2.50%	0.487%
5	3.038	184	190	198	rVB5	15664	40173	1.46%	0.283%
6	3.403	245	252	259	rVB3	12944	29185	1.06%	0.206%
7	4.156	370	380	390	rBV3	14342	42748	1.55%	0.301%
8	4.403	410	422	433	rBV	46132	133309	4.83%	0.940%
9	7.914	1008	1019	1024	rBV	388630	958465	34.75%	6.757%
10	7.973	1024	1029	1041	rVB	612493	1363810	49.45%	9.615%
11	8.326	1079	1089	1098	rBV	387811	871507	31.60%	6.144%
12	8.861	1169	1180	1192	rBV	980703	1979861	71.79%	13.959%
13	9.097	1211	1220	1231	rVB5	24957	65794	2.39%	0.464%
14	10.332	1422	1430	1438	rBV	1517093	2757956	100.00%	19.444%
15	11.638	1642	1652	1661	rBV	1253646	2197187	79.67%	15.491%
16	11.885	1691	1694	1704	rVB10	18672	41244	1.50%	0.291%
17	12.144	1729	1738	1746	rBV9	31213	77850	2.82%	0.549%
18	12.344	1762	1772	1773	rBV7	31360	59984	2.17%	0.423%
19	12.373	1773	1777	1783	rVB4	38859	75099	2.72%	0.529%
20	12.626	1813	1820	1827	rBV	787973	1337481	48.50%	9.430%
21	12.708	1827	1834	1843	rVV10	53597	200696	7.28%	1.415%
22	12.785	1844	1847	1852	rVB4	44172	68923	2.50%	0.486%
23	12.943	1868	1874	1885	rBV4	40029	128698	4.67%	0.907%
24	13.561	1972	1979	1994	rVB	737780	1299839	47.13%	9.164%
25	13.767	2009	2014	2028	rVB	27620	104673	3.80%	0.738%
26	13.885	2030	2034	2039	rVB6	20928	33827	1.23%	0.238%
27	14.096	2065	2070	2078	rVB10	17581	46019	1.67%	0.324%

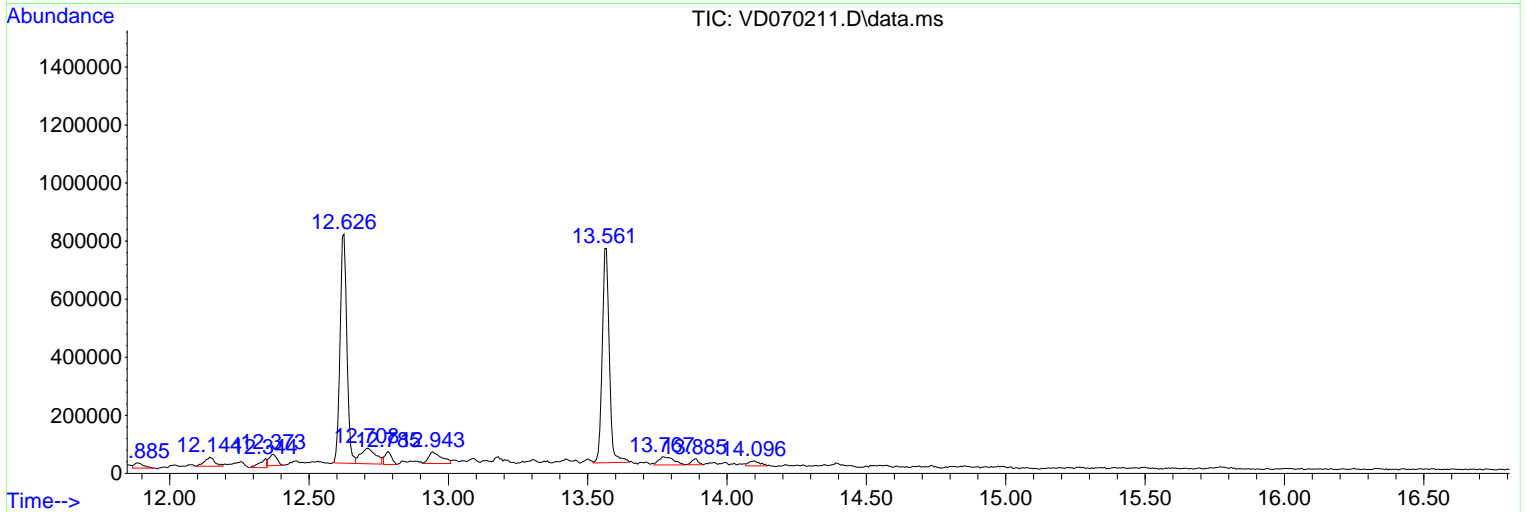
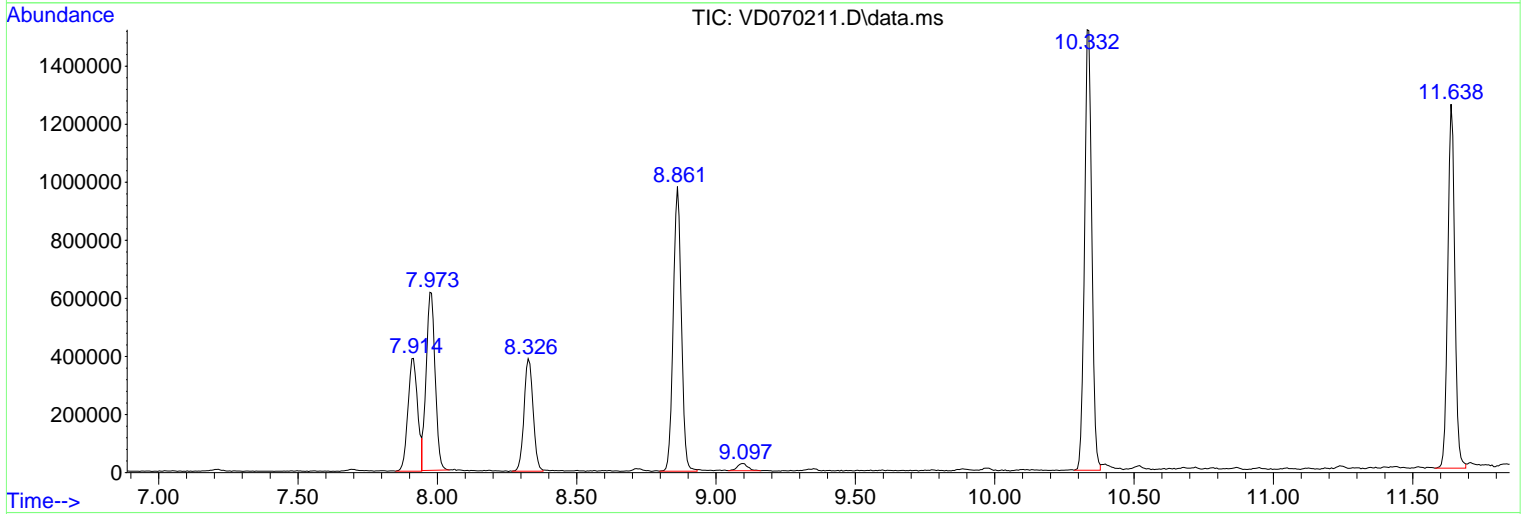
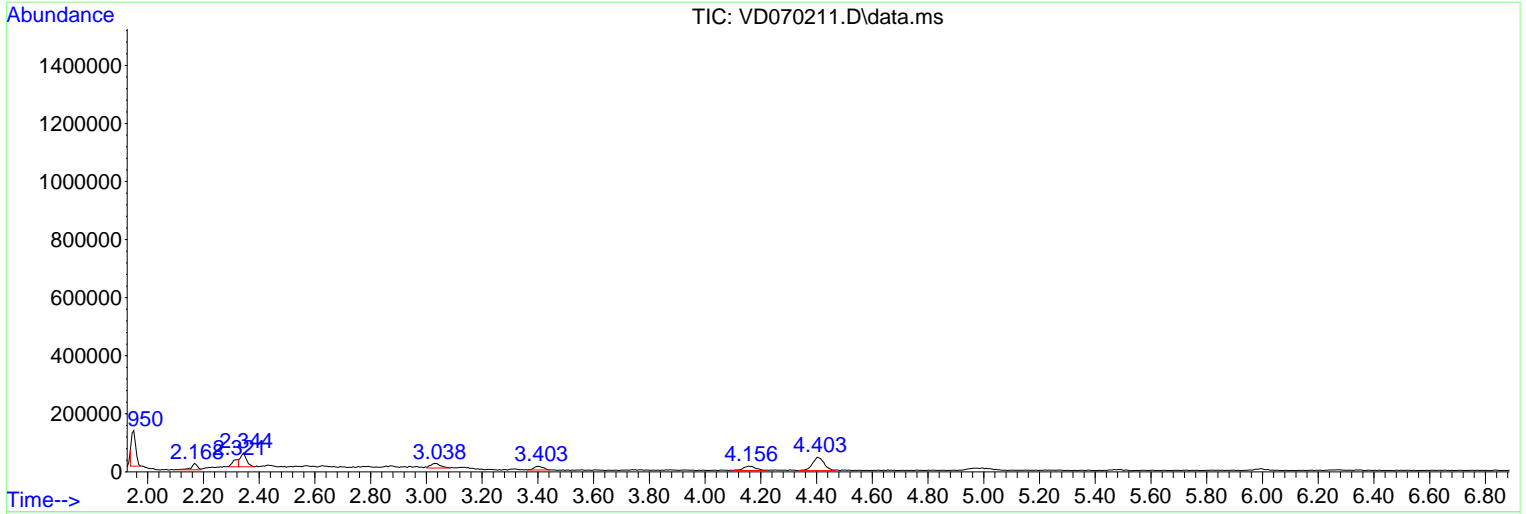
Sum of corrected areas: 14183788

Data Path : Z:\voasrv\HPCHEM1\MSVOA_D\Data\VD082021\
 Data File : VD070211.D
 Acq On : 20 Aug 2021 19:11
 Operator : VA/SY
 Sample : M3463-17
 Misc : 4.13G/5.00ml/MSVOA_D/SOIL
 ALS Vial : 18 Sample Multiplier: 1

Instrument :
 MSVOA_D
 ClientSampleId :
 SWCS-18-0002

Quant Method : Z:\voasrv\HPCHEM1\MSVOA_D\Method\82D081321S.M
 Quant Title : SW846 8260

TIC Library : C:\Database\NIST20.L
 TIC Integration Parameters: LSCINT.P



Data Path : Z:\voasrv\HPCHEM1\MSVOA_D\Data\VD082021\
 Data File : VD070211.D
 Acq On : 20 Aug 2021 19:11
 Operator : VA/SY
 Sample : M3463-17
 Misc : 4.13G/5.00ml/MSVOA_D/SOIL
 ALS Vial : 18 Sample Multiplier: 1

Instrument :
 MSVOA_D
 ClientSampleId :
 SWCS-18-0002

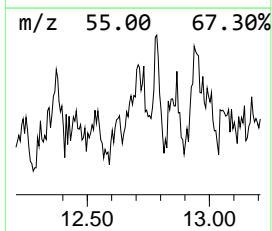
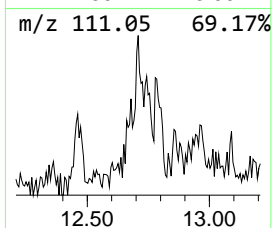
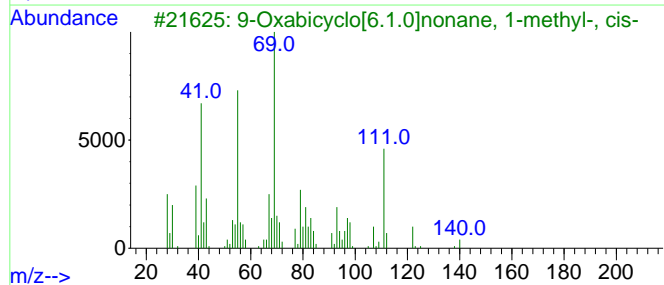
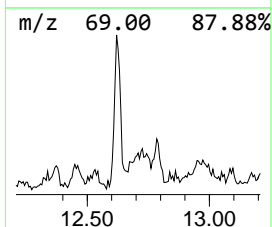
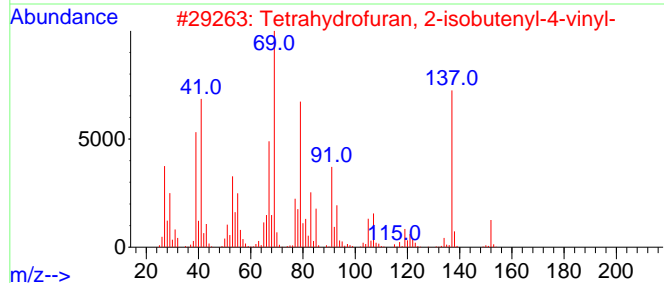
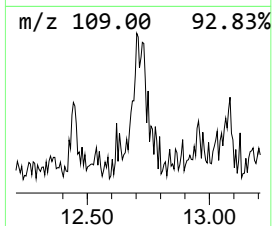
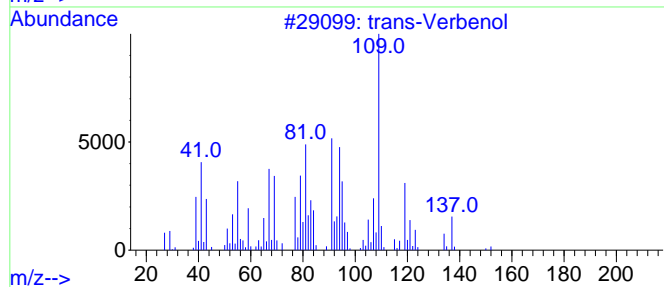
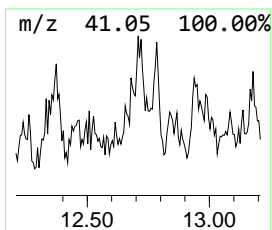
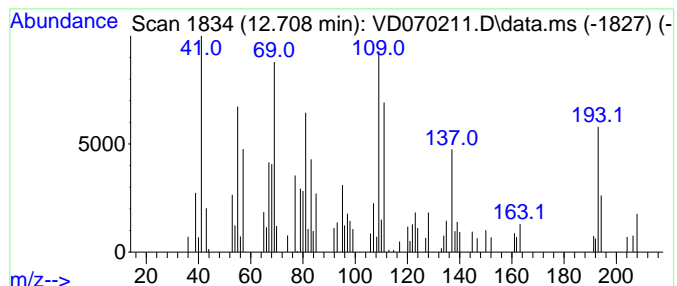
Quant Method : Z:\voasrv\HPCHEM1\MSVOA_D\Method\82D081321S.M
 Quant Title : SW846 8260

TIC Library : C:\Database\NIST20.L
 TIC Integration Parameters: LSCINT.P

 Peak Number 1 unknown12.708 Concentration Rank 1

R.T.	EstConc	Area	Relative to ISTD	R.T.
12.708	7.72 ug/l	200696	1,4-Dichlorobenzene-d4	13.567

Hit#	of 5	Tentative ID	MW	MolForm	CAS#	Qual
1		trans-Verbenol	152	C10H16O	001820-09-3	38
2		Tetrahydrofuran, 2-isobutenyl-4-...	152	C10H16O	1010150-01-5	30
3		9-Oxabicyclo[6.1.0]nonane, 1-met...	140	C9H16O	052954-47-9	25
4		1,7-Octadien-3-one, 2-methyl-6-m...	150	C10H14O	041702-60-7	25
5		Benzenamine, 3-ethoxy-	137	C8H11NO	000621-33-0	18



Data Path : Z:\voasrv\HPCHEM1\MSVOA_D\Data\VD082021\
Data File : VD070211.D
Acq On : 20 Aug 2021 19:11
Operator : VA/SY
Sample : M3463-17
Misc : 4.13G/5.00ml/MSVOA_D/SOIL
ALS Vial : 18 Sample Multiplier: 1

Instrument :
MSVOA_D
ClientSampleId :
SWCS-18-0002

Quant Method : Z:\voasrv\HPCHEM1\MSVOA_D\Method\82D081321S.M
Quant Title : SW846 8260

TIC Library : C:\Database\NIST20.L
TIC Integration Parameters: LSCINT.P

TIC Top Hit name	RT	EstConc	Units	Response	--Internal Standard--			
					#	RT	Resp	Conc
unknown	12.708	7.7	ug/l	200696	4	13.567	1299840	50.0