

Data Path : W:\HPCHEM1\MSVOA D\DATA\VD092315\
 Data File : VD046855.D
 Acq On : 23 Sep 2015 15:10
 Operator : FY/SY
 Sample : G3779-01
 Misc : 5.01µm/5mL/MSVOA D/SOIL
 ALS Vial : 9 Sample Multiplier: 1

Instrument :
 MSVOA_D
 ClientSampled :
 S1-18

Integration Parameters: RTEINT.P

Integrator: RTE
 Smoothing : ON Filtering: 5
 Sampling : 1 Min Area: 3 % of largest Peak
 Start Thrs: 0.2 Max Peaks: 100
 Stop Thrs : 0 Peak Location: TOP

If leading or trailing edge < 100 prefer < Baseline drop else tangent >
 Peak separation: 5

Method : W:\HPCHEM1\MSVOA_D\METHOD\82D091815S.M
 Title : SW846 8260

Signal : TIC

peak #	R.T. min	first scan	max scan	last scan	PK TY	peak height	corr. area	corr. % max.	% of total
1	1.239	69	72	73	rBV	7597	8956	1.16%	0.185%
2	1.269	73	75	84	rVB	213991	391782	50.86%	8.086%
3	1.604	103	109	111	rBV3	4076	12723	1.65%	0.263%
4	1.870	133	136	141	rBV7	3849	8781	1.14%	0.181%
5	2.521	199	202	207	rVB3	4378	11100	1.44%	0.229%
6	4.837	436	437	440	rVB	12406	8800	1.14%	0.182%
7	5.389	488	493	500	rBV	7096	22027	2.86%	0.455%
8	6.197	568	575	580	rBV	120221	289853	37.63%	5.982%
9	6.296	580	585	595	rVB	226797	542608	70.44%	11.199%
10	6.700	613	626	632	rBV2	87707	241137	31.30%	4.977%
11	7.420	691	699	711	rBV	280831	637800	82.79%	13.164%
12	9.608	914	921	929	rBV	293382	643056	83.48%	13.273%
13	10.505	1005	1012	1017	rVB4	3521	8613	1.12%	0.178%
14	11.441	1103	1107	1111	rVB3	4249	9062	1.18%	0.187%
15	11.560	1115	1119	1129	rVV	418848	770341	100.00%	15.900%
16	12.841	1244	1249	1255	rBV	299271	480381	62.36%	9.915%
17	12.940	1255	1259	1266	rVB	14463	29153	3.78%	0.602%
18	13.906	1353	1357	1365	rBV	448061	707583	91.85%	14.604%
19	14.211	1385	1388	1392	rVB3	6071	10911	1.42%	0.225%
20	14.320	1392	1399	1401	rBV5	4485	10349	1.34%	0.214%

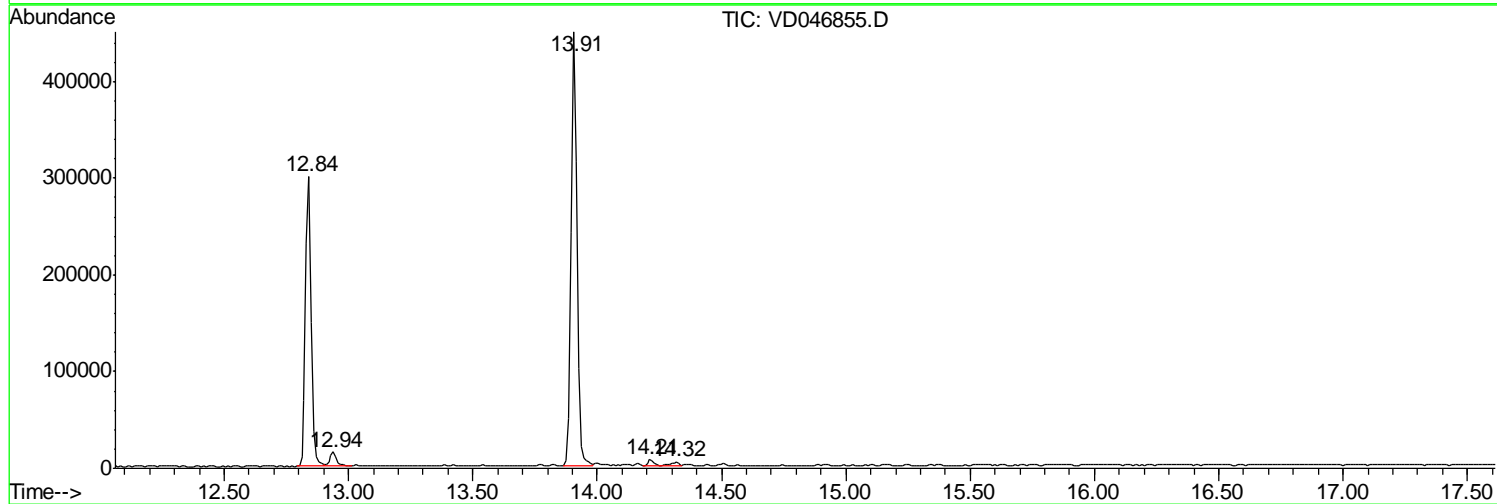
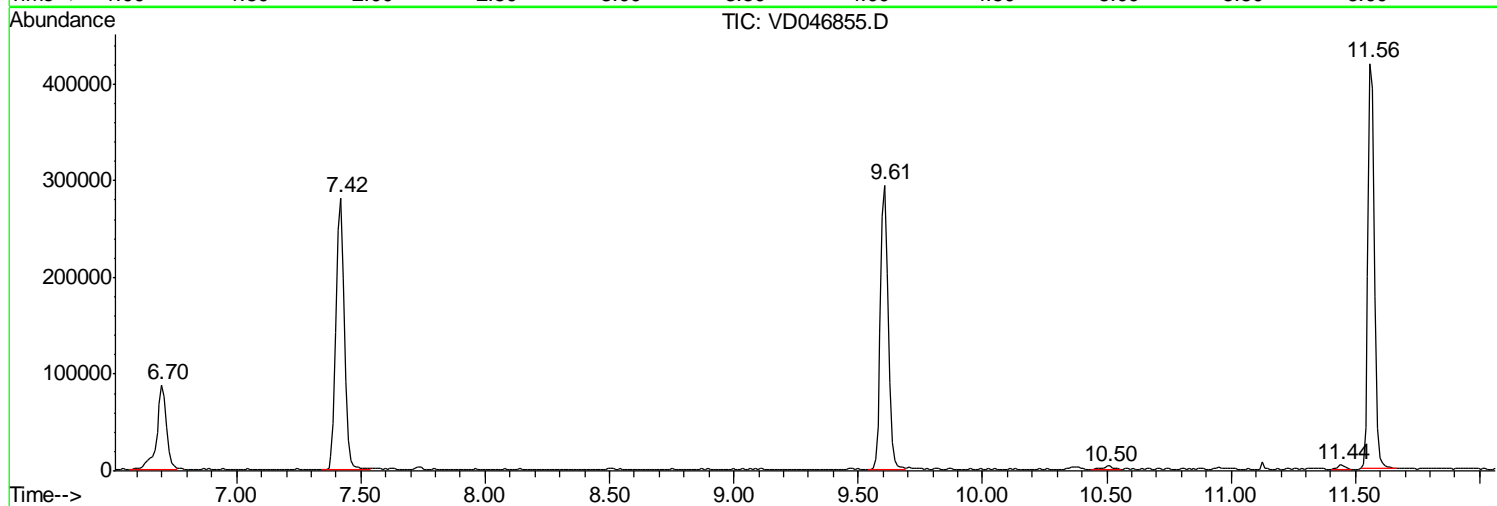
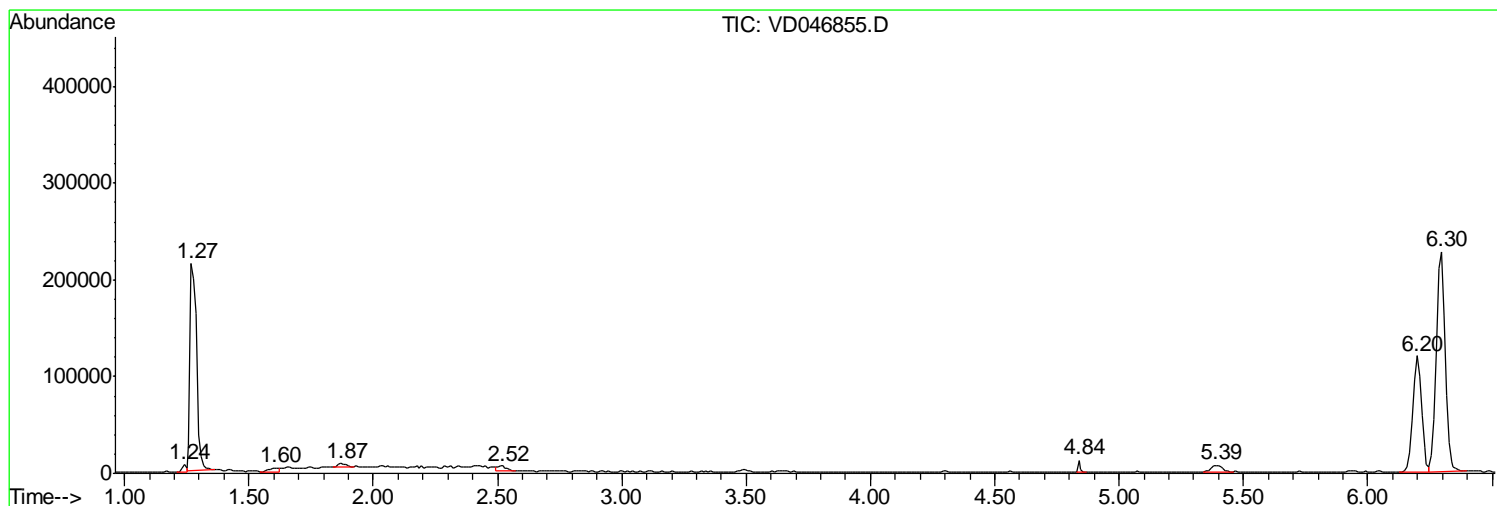
Sum of corrected areas: 4845016

Data Path : W:\HPCHEM1\MSVOA D\DATA\VD092315\
 Data File : VD046855.D
 Acq On : 23 Sep 2015 15:10
 Operator : FY/SY
 Sample : G3779-01
 Misc : 5.01µm/5mL/MSVOA D/SOIL
 ALS Vial : 9 Sample Multiplier: 1

Instrument :
 MSVOA_D
 ClientSampled :
 S1-18

Quant Method : W:\HPCHEM1\MSVOA_D\METHOD\82D091815S.M
 Quant Title : SW846 8260

TIC Library : C:\DATABASE\NIST02.L
 TIC Integration Parameters: LSCINT.P



Data Path : W:\HPCHEM1\MSVOA_D\DATA\VD092315\
Data File : VD046855.D
Acq On : 23 Sep 2015 15:10
Operator : FY/SY
Sample : G3779-01
Misc : 5.01gm/5mL/MSVOA_D/SOIL
ALS Vial : 9 Sample Multiplier: 1

Instrument :
MSVOA_D
ClientSampleId :
S1-18

Quant Method : W:\HPCHEM1\MSVOA_D\METHOD\82D091815S.M
Quant Title : SW846 8260

TIC Library : C:\DATABASE\NIST02.L
TIC Integration Parameters: LSCINT.P

No Library Search Compounds Detected

Data Path : W:\HPCHEM1\MSVOA_D\DATA\VD092315\
Data File : VD046855.D
Acq On : 23 Sep 2015 15:10
Operator : FY/SY
Sample : G3779-01
Misc : 5.01gm/5mL/MSVOA_D/SOIL
ALS Vial : 9 Sample Multiplier: 1

Instrument :
MSVOA_D
ClientSampleId :
S1-18

Quant Method : W:\HPCHEM1\MSVOA_D\METHOD\82D091815S.M
Quant Title : SW846 8260

TIC Library : C:\DATABASE\NIST02.L
TIC Integration Parameters: LSCINT.P

TIC Top Hit name	RT	EstConc	Units	Response	--Internal Standard--			
					#	RT	Resp	Conc
