

Data Path : Z:\voasrv\HPCHEM1\MSVOA_D\Data\VD092624\
 Data File : VD079913.D
 Acq On : 26 Sep 2024 17:28
 Operator : RP/MD
 Sample : P4162-20
 Misc : 5.03G/10ml/MSVOA_D/SOIL/A
 ALS Vial : 13 Sample Multiplier: 1

Instrument :
 MSVOA_D
 ClientSampleId :

Quant Time: Sep 27 01:42:05 2024
 Quant Method : Z:\voasrv\HPCHEM1\MSVOA_D\Method\SFAMDLM091024SMA.M
 Quant Title : SFAM01.0
 QLast Update : Fri Sep 27 01:31:41 2024
 Response via : Initial Calibration

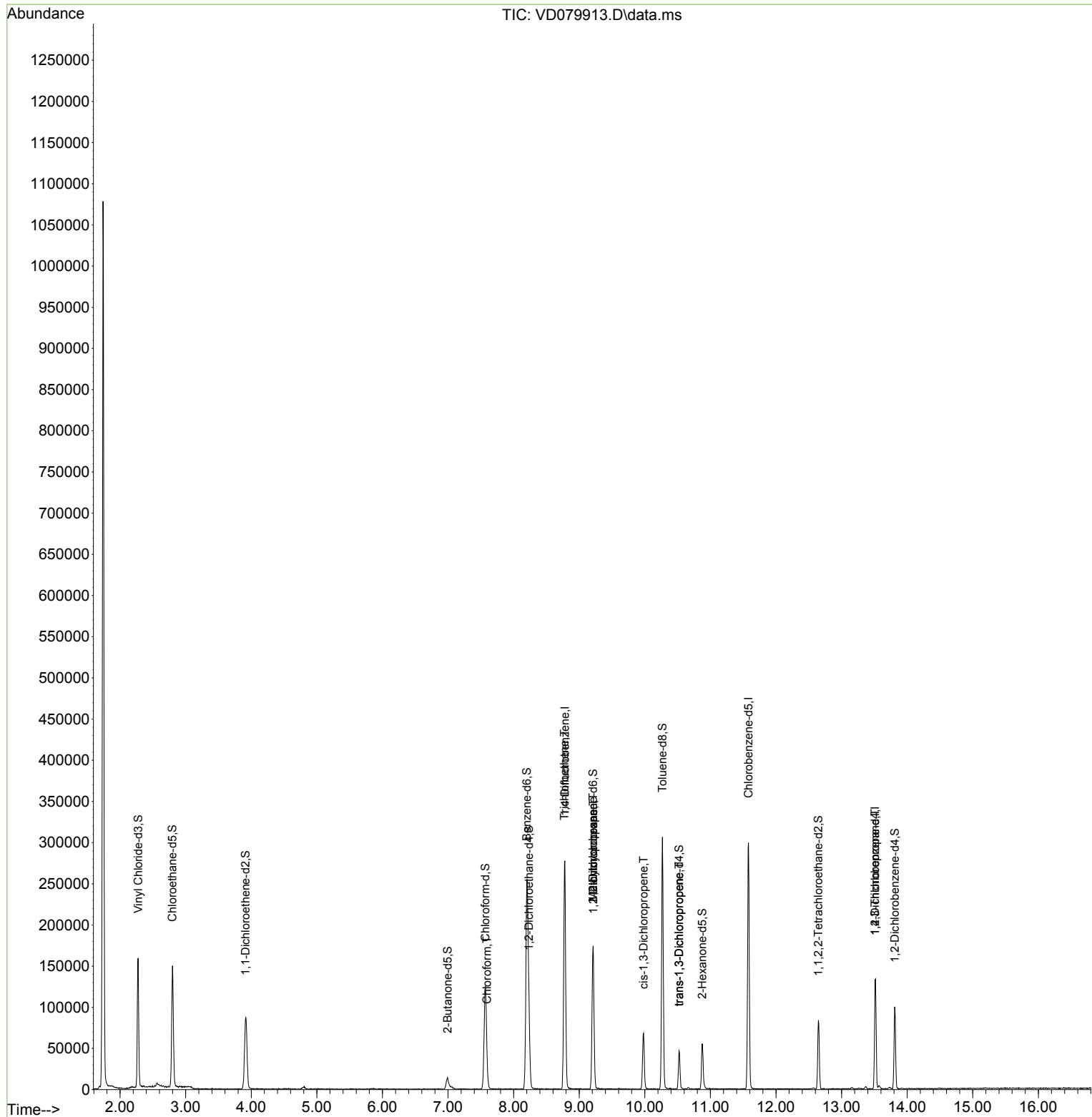
| Compound | R.T. | QIon | Response | Conc | Units | Dev(Min) |
|-------------------------------|--------|----------------|------------|----------|--------|----------|
| Internal Standards | | | | | | |
| 1) 1,4-Difluorobenzene | 8.781 | 114 | 231971 | 25.000 | ug/L | 0.00 |
| 28) Chlorobenzene-d5 | 11.581 | 117 | 166675 | 25.000 | ug/L | 0.00 |
| 58) 1,4-Dichlorobenzene-d4 | 13.510 | 152 | 32945 | 25.000 | ug/L | 0.00 |
| System Monitoring Compounds | | | | | | |
| 4) Vinyl Chloride-d3 | 2.276 | 65 | 148599 | 14.732 | ug/L | 0.00 |
| Spiked Amount | 25.000 | Range 30 - 150 | Recovery = | 58.920% | | |
| 7) Chloroethane-d5 | 2.799 | 69 | 150060 | 18.790 | ug/L | 0.00 |
| Spiked Amount | 25.000 | Range 30 - 150 | Recovery = | 75.160% | | |
| 11) 1,1-Dichloroethene-d2 | 3.911 | 65 | 25722 | 14.045 | ug/L | 0.00 |
| Spiked Amount | 25.000 | Range 45 - 110 | Recovery = | 56.160% | | |
| 21) 2-Butanone-d5 | 6.993 | 46 | 23010 | 24.552 | ug/L | 0.00 |
| Spiked Amount | 50.000 | Range 20 - 135 | Recovery = | 49.100% | | |
| 24) Chloroform-d | 7.569 | 84 | 130981 | 17.177 | ug/L | 0.00 |
| Spiked Amount | 25.000 | Range 40 - 150 | Recovery = | 68.720% | | |
| 26) 1,2-Dichloroethane-d4 | 8.234 | 65 | 69468 | 17.422 | ug/L | 0.00 |
| Spiked Amount | 25.000 | Range 70 - 130 | Recovery = | 69.680%# | | |
| 32) Benzene-d6 | 8.199 | 84 | 262036 | 22.268 | ug/L | 0.00 |
| Spiked Amount | 25.000 | Range 20 - 135 | Recovery = | 89.080% | | |
| 36) 1,2-Dichloropropane-d6 | 9.210 | 67 | 85307 | 23.671 | ug/L | 0.00 |
| Spiked Amount | 25.000 | Range 70 - 120 | Recovery = | 94.680% | | |
| 41) Toluene-d8 | 10.269 | 98 | 203577 | 19.660 | ug/L | 0.00 |
| Spiked Amount | 25.000 | Range 30 - 130 | Recovery = | 78.640% | | |
| 43) trans-1,3-Dichloroprop... | 10.522 | 79 | 26127 | 16.862 | ug/L | 0.00 |
| Spiked Amount | 25.000 | Range 30 - 135 | Recovery = | 67.440% | | |
| 47) 2-Hexanone-d5 | 10.875 | 63 | 18701 | 31.832 | ug/L | 0.00 |
| Spiked Amount | 50.000 | Range 20 - 135 | Recovery = | 63.660% | | |
| 56) 1,1,2,2-Tetrachloroeth... | 12.646 | 84 | 43002 | 16.238 | ug/L | 0.00 |
| Spiked Amount | 25.000 | Range 45 - 120 | Recovery = | 64.960% | | |
| 66) 1,2-Dichlorobenzene-d4 | 13.810 | 152 | 24492 | 19.713 | ug/L | 0.00 |
| Spiked Amount | 25.000 | Range 75 - 120 | Recovery = | 78.840% | | |
| Target Compounds | | | | | | |
| 25) Chloroform | 7.593 | 83 | 7099 | 0.914 | ug/L | 86 |
| 34) Trichloroethene | 8.775 | 95 | 7423 | 2.588 | ug/L # | 8 |
| 35) Methylcyclohexane | 9.210 | 83 | 19764 | 4.271 | ug/L # | 19 |
| 37) 1,2-Dichloropropane | 9.216 | 63 | 9863 | 2.914 | ug/L # | 100 |
| 39) cis-1,3-Dichloropropene | 9.981 | 75 | 2117 | 0.445 | ug/L | 87 |
| 44) trans-1,3-Dichloropropene | 10.522 | 75 | 1426 | 0.340 | ug/L # | 51 |
| 61) 1,2,3-Trichloropropane | 13.510 | 75 | 4956 | 6.120 | ug/L # | 70 |

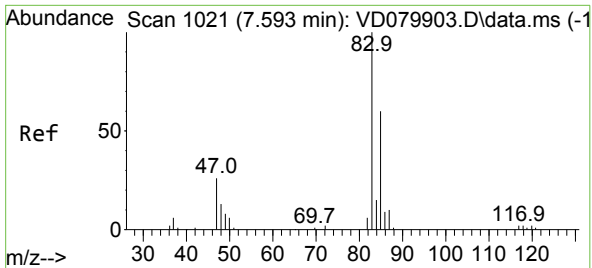
(#) = qualifier out of range (m) = manual integration (+) = signals summed

Data Path : Z:\voasrv\HPCHEM1\MSVOA_D\Data\VD092624\
 Data File : VD079913.D
 Acq On : 26 Sep 2024 17:28
 Operator : RP/MD
 Sample : P4162-20
 Misc : 5.03G/10ml/MSVOA_D/SOIL/A
 ALS Vial : 13 Sample Multiplier: 1

Instrument :
 MSVOA_D
 ClientSampleId :

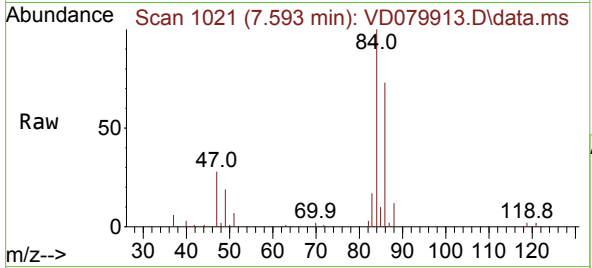
Quant Time: Sep 27 01:42:05 2024
 Quant Method : Z:\voasrv\HPCHEM1\MSVOA_D\Method\SFAMDLM091024SMA.M
 Quant Title : SFAM01.0
 QLast Update : Fri Sep 27 01:31:41 2024
 Response via : Initial Calibration



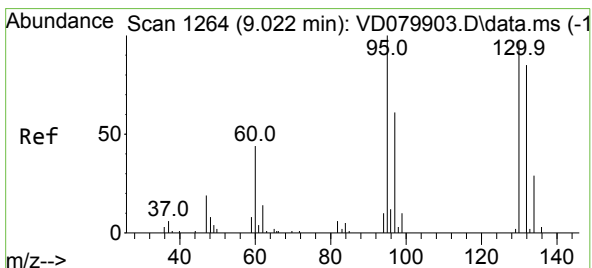
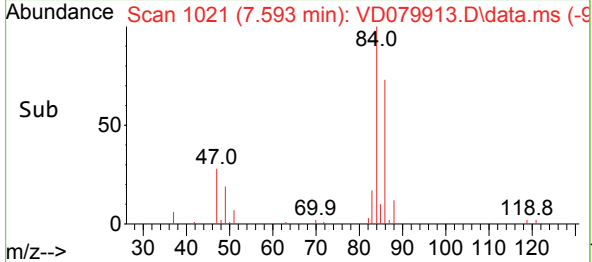
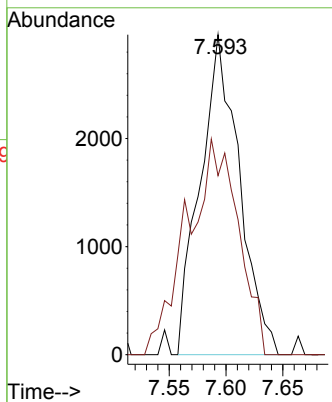


#25
 Chloroform
 Concen: 0.914 ug/L
 RT: 7.593 min Scan# 1021
 Delta R.T. 0.000 min
 Lab File: VD079913.D
 Acq: 26 Sep 2024 17:28

Instrument : MSVOA_D
 ClientSampleId :

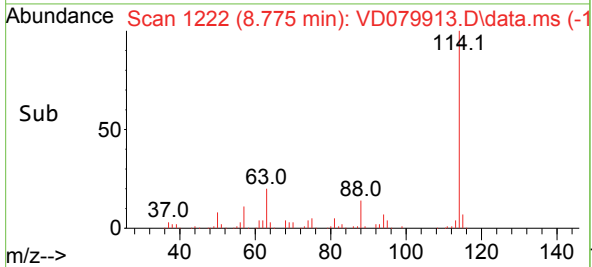
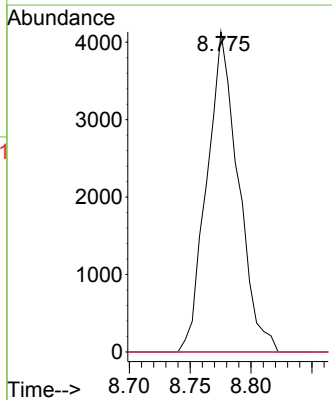
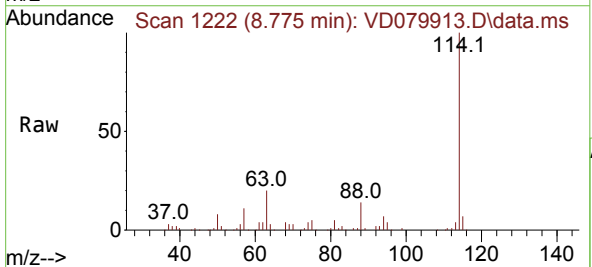


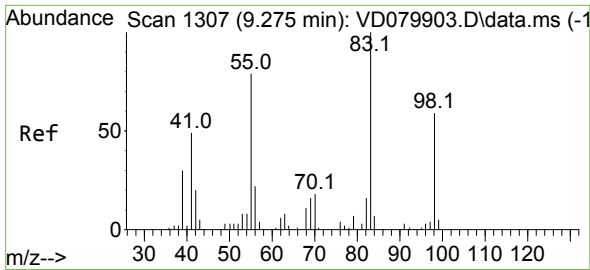
Tgt Ion: 83 Resp: 7099
 Ion Ratio Lower Upper
 83 100
 85 56.0 47.3 87.9



#34
 Trichloroethene
 Concen: 2.588 ug/L
 RT: 8.775 min Scan# 1222
 Delta R.T. -0.247 min
 Lab File: VD079913.D
 Acq: 26 Sep 2024 17:28

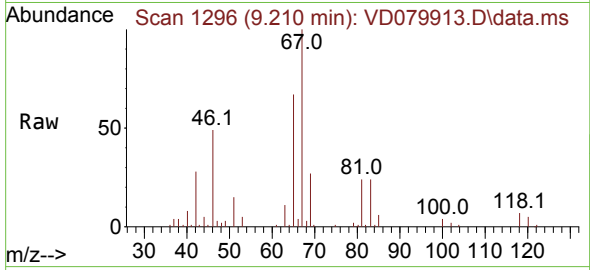
Tgt Ion: 95 Resp: 7423
 Ion Ratio Lower Upper
 95 100
 97 0.0 43.5 80.7#
 132 0.0 64.5 119.7#
 130 0.0 64.1 119.1#



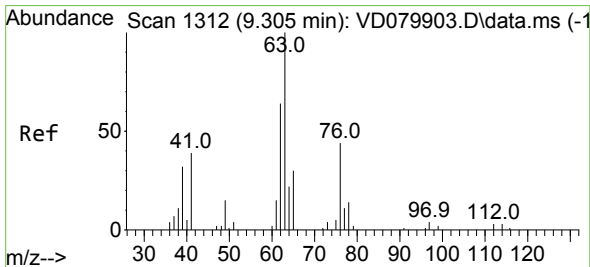
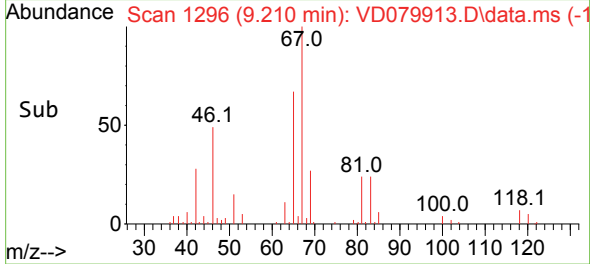
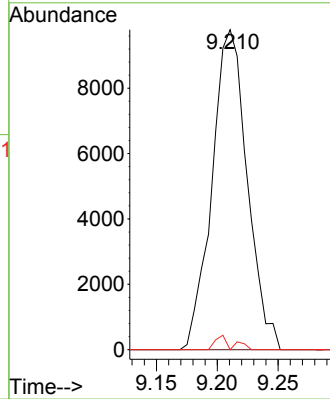


#35
 Methylcyclohexane
 Concen: 4.271 ug/L
 RT: 9.210 min Scan# 1296
 Delta R.T. -0.065 min
 Lab File: VD079913.D
 Acq: 26 Sep 2024 17:28

Instrument : MSVOA_D
 ClientSampleId :

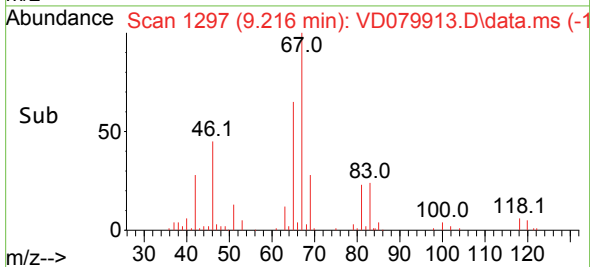
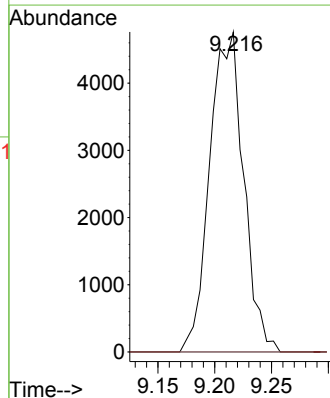
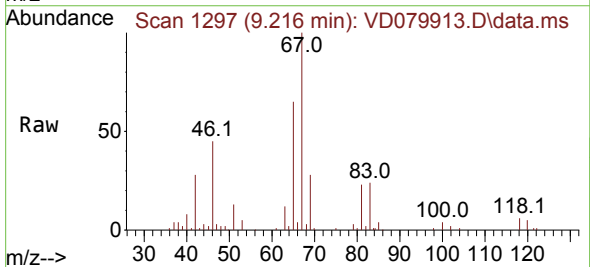


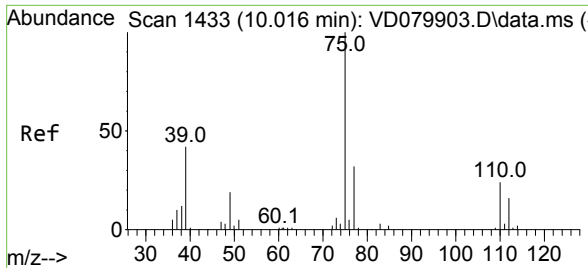
Tgt Ion: 83 Resp: 19764
 Ion Ratio Lower Upper
 83 100
 55 0.0 58.9 88.3#
 98 0.7 38.6 58.0#



#37
 1,2-Dichloropropane
 Concen: 2.914 ug/L
 RT: 9.216 min Scan# 1297
 Delta R.T. -0.088 min
 Lab File: VD079913.D
 Acq: 26 Sep 2024 17:28

Tgt Ion: 63 Resp: 9863
 Ion Ratio Lower Upper
 63 100
 112 0.0 0.0 0.0

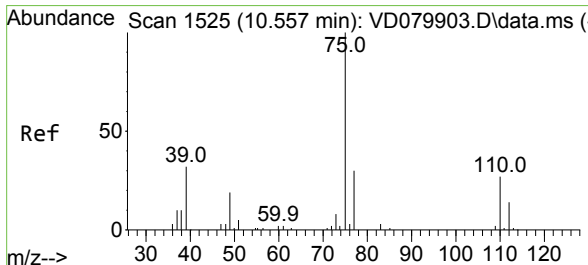
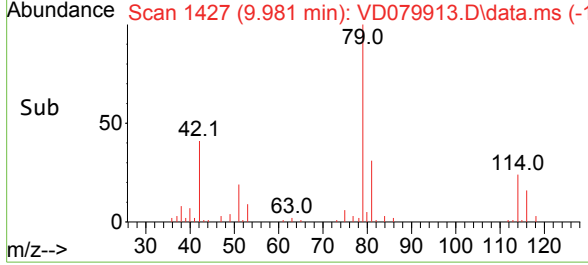
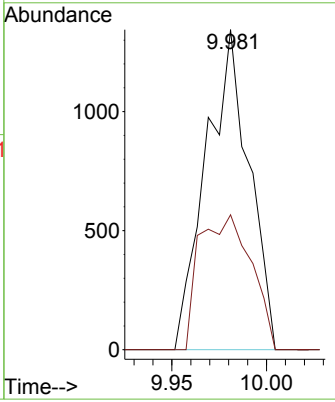
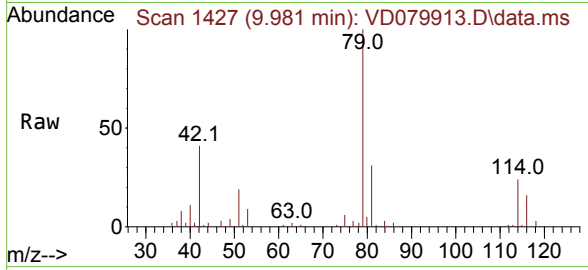




#39
 cis-1,3-Dichloropropene
 Concen: 0.445 ug/L
 RT: 9.981 min Scan# 1427
 Delta R.T. -0.035 min
 Lab File: VD079913.D
 Acq: 26 Sep 2024 17:28

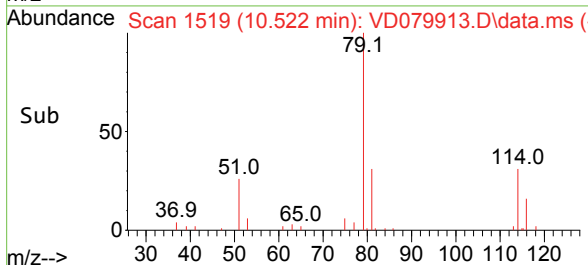
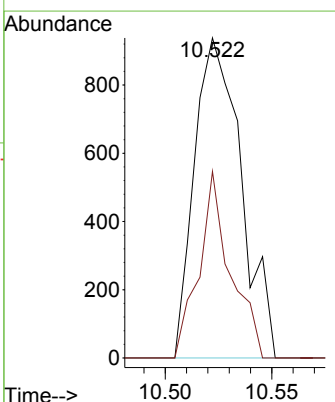
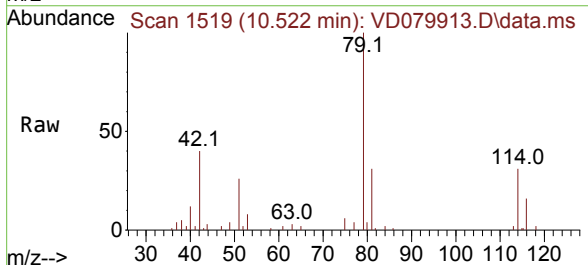
Instrument : MSVOA_D
 ClientSampleId :

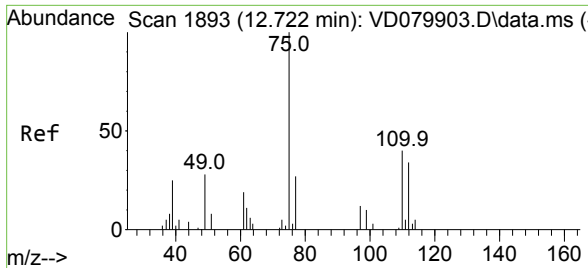
Tgt Ion: 75 Resp: 2117
 Ion Ratio Lower Upper
 75 100
 77 42.2 24.1 44.8



#44
 trans-1,3-Dichloropropene
 Concen: 0.340 ug/L
 RT: 10.522 min Scan# 1519
 Delta R.T. -0.035 min
 Lab File: VD079913.D
 Acq: 26 Sep 2024 17:28

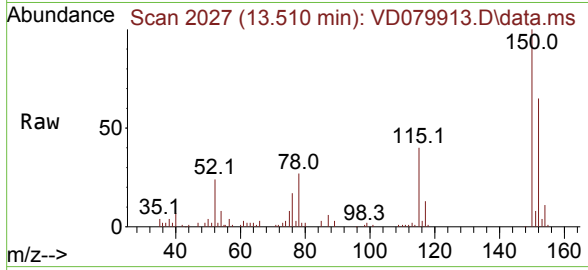
Tgt Ion: 75 Resp: 1426
 Ion Ratio Lower Upper
 75 100
 77 58.3 21.8 40.4#





#61
 1,2,3-Trichloropropane
 Concen: 6.120 ug/L
 RT: 13.510 min Scan# 20
 Delta R.T. 0.788 min
 Lab File: VD079913.D
 Acq: 26 Sep 2024 17:28

Instrument :
 MSVOA_D
 ClientSampleId :



| Tgt Ion | Resp | Lower | Upper |
|---------|------|-------|-------|
| 75 | 4956 | | |
| 75 | 100 | | |
| 77 | 32.6 | 25.1 | 37.7 |
| 110 | 5.9 | 30.1 | 45.1# |

