

Data Path : Z:\voasrv\HPCHEM1\MSVOA\_D\Data\VD092624\  
 Data File : VD079904.D  
 Acq On : 26 Sep 2024 12:53  
 Operator : RP/MD  
 Sample : VD0926SBL01  
 Misc : 5.00G/10ml/MSVOA\_D/SOIL  
 ALS Vial : 4 Sample Multiplier: 1

Instrument :  
 MSVOA\_D  
 ClientSampleId :  
 VBLK822

Integration Parameters: LSCINT.P

Integrator: RTE  
 Smoothing : OFF  
 Sampling : 1  
 Start Thrs : 0.2  
 Stop Thrs : 0

Filtering: 5  
 Min Area: 0 % of largest Peak  
 Max Peaks: 100  
 Peak Location: TOP

If leading or trailing edge < 100 prefer < Baseline drop else tangent >  
 Peak separation: 5

Method : Z:\voasrv\HPCHEM1\MSVOA\_D\Method\SFAMDLM091024SMA.M  
 Title : SFAM01.0

Signal : TIC: VD079904.D\data.ms

peak #	R.T. min	first scan	max scan	last scan	PK TY	peak height	corr. area	corr. % max.	% of total
1	1.699	13	19	20	rBV	3816	5621	0.81%	0.126%
2	1.740	20	26	36	rVB	427489	694368	100.00%	15.525%
3	2.146	92	95	97	rBV2	1685	2322	0.33%	0.052%
4	2.275	109	117	124	rBV	105387	158035	22.76%	3.533%
5	2.799	199	206	215	rBV	92204	174096	25.07%	3.892%
6	3.481	321	322	325	rVB	906	495	0.07%	0.011%
7	3.593	336	341	342	rBV	726	951	0.14%	0.021%
8	3.616	342	345	346	rVV	533	534	0.08%	0.012%
9	3.669	351	354	357	rBV	604	580	0.08%	0.013%
10	3.734	363	365	367	rVV	600	606	0.09%	0.014%
11	3.858	381	386	387	rBV2	759	908	0.13%	0.020%
12	3.916	387	396	408	rVB	59350	149061	21.47%	3.333%
13	4.040	414	417	420	rBV3	555	569	0.08%	0.013%
14	4.263	452	455	457	rVV	602	778	0.11%	0.017%
15	4.416	479	481	485	rBV	568	671	0.10%	0.015%
16	4.452	485	487	489	rVB	689	553	0.08%	0.012%
17	4.511	495	497	499	rBV	564	495	0.07%	0.011%
18	4.681	523	526	529	rVB	737	790	0.11%	0.018%
19	4.711	529	531	532	rBV	956	698	0.10%	0.016%
20	4.793	538	545	546	rBV4	2407	3657	0.53%	0.082%
21	4.869	556	558	561	rVB2	831	596	0.09%	0.013%
22	4.952	570	572	574	rVB	945	537	0.08%	0.012%
23	4.993	577	579	582	rBV	603	662	0.10%	0.015%
24	5.134	600	603	605	rBV	723	680	0.10%	0.015%
25	5.399	646	648	650	rBV2	883	834	0.12%	0.019%
26	5.469	658	660	662	rVB	772	563	0.08%	0.013%
27	5.522	666	669	673	rBV2	398	644	0.09%	0.014%
28	5.575	676	678	682	rVB2	598	699	0.10%	0.016%
29	5.616	682	685	686	rBV	490	585	0.08%	0.013%
30	5.628	686	687	690	rVB	978	703	0.10%	0.016%
31	5.652	690	691	693	rBV	755	554	0.08%	0.012%
32	5.699	695	699	701	rBV	492	551	0.08%	0.012%
33	5.752	707	708	711	rBV	565	557	0.08%	0.012%
34	5.910	733	735	740	rVB	696	771	0.11%	0.017%
35	6.105	766	768	771	rVB	508	499	0.07%	0.011%
36	6.140	771	774	780	rBV2	580	1045	0.15%	0.023%

Data Path : Z:\voasrv\HPCHEM1\MSVOA\_D\Data\VD092624\  
 Data File : VD079904.D  
 Acq On : 26 Sep 2024 12:53  
 Operator : RP/MD  
 Sample : VD0926SBL01  
 Misc : 5.00G/10ml/MSVOA\_D/SOIL  
 ALS Vial : 4 Sample Multiplier: 1

Instrument :  
 MSVOA\_D  
 ClientSampleId :  
 VBLK822

Integration Parameters: LSCINT.P

Integrator: RTE  
 Smoothing : OFF  
 Sampling : 1  
 Start Thrs: 0.2  
 Stop Thrs : 0

Filtering: 5  
 Min Area: 0 % of largest Peak  
 Max Peaks: 100  
 Peak Location: TOP

If leading or trailing edge < 100 prefer < Baseline drop else tangent >  
 Peak separation: 5

Method : Z:\voasrv\HPCHEM1\MSVOA\_D\Method\SFAMDLM091024SMA.M  
 Title : SFAM01.0

37	6.240	789	791	795	rVB	945	713	0.10%	0.016%
38	6.610	851	854	855	rVB	789	605	0.09%	0.014%
39	6.634	855	858	860	rBV	608	521	0.08%	0.012%
40	6.722	872	873	875	rBV	607	521	0.08%	0.012%
41	6.857	894	896	898	rBV	603	503	0.07%	0.011%
42	6.899	901	903	906	rVB	648	593	0.09%	0.013%
43	6.981	909	917	918	rBV2	12109	18669	2.69%	0.417%
44	7.199	951	954	957	rBV2	620	793	0.11%	0.018%
45	7.340	974	978	979	rVB2	563	698	0.10%	0.016%
46	7.404	988	989	993	rBV2	389	510	0.07%	0.011%
47	7.569	1006	1017	1030	rVV2	86465	227272	32.73%	5.081%
48	7.693	1036	1038	1039	rVV	989	513	0.07%	0.011%
49	7.799	1053	1056	1059	rBV2	599	781	0.11%	0.017%
50	7.922	1075	1077	1080	rBV	444	579	0.08%	0.013%
51	8.016	1088	1093	1094	rBV2	428	637	0.09%	0.014%
52	8.116	1107	1110	1111	rBV	819	891	0.13%	0.020%
53	8.204	1115	1125	1139	rBV2	185346	548020	78.92%	12.253%
54	8.634	1195	1198	1199	rBV2	553	536	0.08%	0.012%
55	8.704	1209	1210	1213	rVB	810	511	0.07%	0.011%
56	8.775	1213	1222	1231	rBV	141637	288046	41.48%	6.440%
57	8.887	1239	1241	1242	rBV	1006	539	0.08%	0.012%
58	8.969	1252	1255	1257	rBV	577	729	0.10%	0.016%
59	9.016	1260	1263	1264	rVB2	996	641	0.09%	0.014%
60	9.210	1288	1296	1306	rVV2	121323	250219	36.04%	5.594%
61	9.540	1348	1352	1354	rBV2	885	960	0.14%	0.021%
62	9.975	1418	1426	1436	rBV2	58340	109031	15.70%	2.438%
63	10.104	1444	1448	1450	rBV2	849	868	0.13%	0.019%
64	10.269	1468	1476	1488	rBV	233013	418065	60.21%	9.347%
65	10.422	1498	1502	1504	rBV	710	1076	0.15%	0.024%
66	10.528	1513	1520	1529	rBV2	38597	69654	10.03%	1.557%
67	10.593	1529	1531	1534	rVV2	704	644	0.09%	0.014%
68	10.663	1536	1543	1552	rVB3	22503	42186	6.08%	0.943%
69	10.875	1572	1579	1586	rBV	55974	98725	14.22%	2.207%
70	11.028	1599	1605	1611	rVB3	12643	18537	2.67%	0.414%
71	11.128	1620	1622	1626	rVB2	1554	1594	0.23%	0.036%
72	11.275	1645	1647	1651	rVV	686	707	0.10%	0.016%
73	11.334	1655	1657	1662	rVV2	777	947	0.14%	0.021%
74	11.398	1664	1668	1673	rVV5	3683	5963	0.86%	0.133%
75	11.463	1676	1679	1681	rBV2	436	541	0.08%	0.012%
76	11.581	1691	1699	1710	rVB	213959	371992	53.57%	8.317%

Data Path : Z:\voasrv\HPCHEM1\MSVOA\_D\Data\VD092624\  
 Data File : VD079904.D  
 Acq On : 26 Sep 2024 12:53  
 Operator : RP/MD  
 Sample : VD0926SBL01  
 Misc : 5.00G/10ml/MSVOA\_D/SOIL  
 ALS Vial : 4 Sample Multiplier: 1

Instrument :  
 MSVOA\_D  
 ClientSampleId :  
 VBLK822

Integration Parameters: LSCINT.P

Integrator: RTE  
 Smoothing : OFF Filtering: 5  
 Sampling : 1 Min Area: 0 % of largest Peak  
 Start Thrs: 0.2 Max Peaks: 100  
 Stop Thrs : 0 Peak Location: TOP

If leading or trailing edge < 100 prefer < Baseline drop else tangent >  
 Peak separation: 5

Method : Z:\voasrv\HPCHEM1\MSVOA\_D\Method\SFAMDLM091024SMA.M  
 Title : SFAM01.0

77	11.792	1731	1735	1739	rBV2	1158	1168	0.17%	0.026%
78	12.416	1838	1841	1842	rBV2	1669	1564	0.23%	0.035%
79	12.575	1862	1868	1874	rVB3	12191	19634	2.83%	0.439%
80	12.645	1874	1880	1887	rBV	83863	141514	20.38%	3.164%
81	12.769	1898	1901	1902	rBV	630	669	0.10%	0.015%
82	12.904	1920	1924	1926	rVB3	1923	2166	0.31%	0.048%
83	13.216	1972	1977	1979	rBV3	950	1562	0.22%	0.035%
84	13.263	1983	1985	1988	rBV2	1139	1362	0.20%	0.030%
85	13.369	2001	2003	2006	rVB	967	759	0.11%	0.017%
86	13.398	2006	2008	2010	rBV2	572	547	0.08%	0.012%
87	13.516	2021	2028	2036	rBV	184944	291320	41.95%	6.513%
88	13.575	2036	2038	2040	rVB	1034	539	0.08%	0.012%
89	13.810	2071	2078	2088	rBV	179537	296696	42.73%	6.633%
90	14.039	2109	2117	2123	rBV2	7213	12174	1.75%	0.272%
91	14.375	2172	2174	2176	rBV	980	634	0.09%	0.014%
92	14.592	2209	2211	2213	rBV2	1077	869	0.13%	0.019%
93	14.816	2246	2249	2252	rBV2	877	1349	0.19%	0.030%
94	15.404	2346	2349	2353	rVB3	1434	2194	0.32%	0.049%
95	15.557	2373	2375	2376	rBV2	1097	535	0.08%	0.012%
96	15.839	2421	2423	2426	rBV2	754	825	0.12%	0.018%
97	16.275	2495	2497	2499	rBV2	782	549	0.08%	0.012%
98	16.404	2518	2519	2521	rBV	826	721	0.10%	0.016%
99	16.639	2557	2559	2562	rBV3	1007	745	0.11%	0.017%
100	16.769	2579	2581	2583	rBV	1062	822	0.12%	0.018%

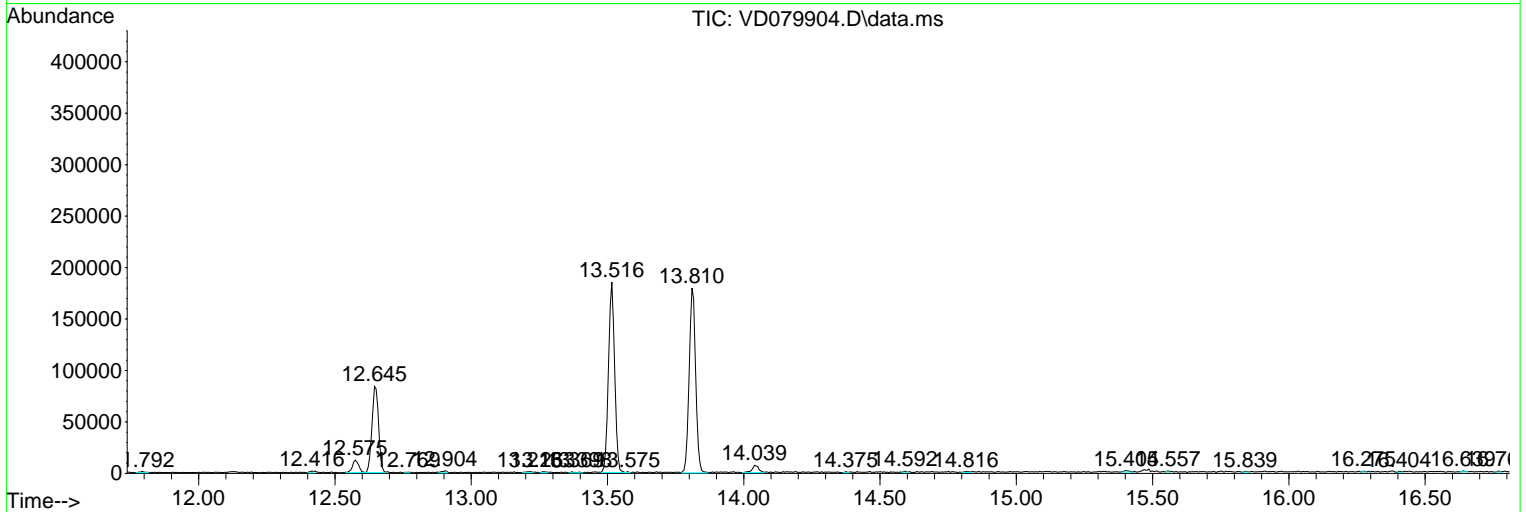
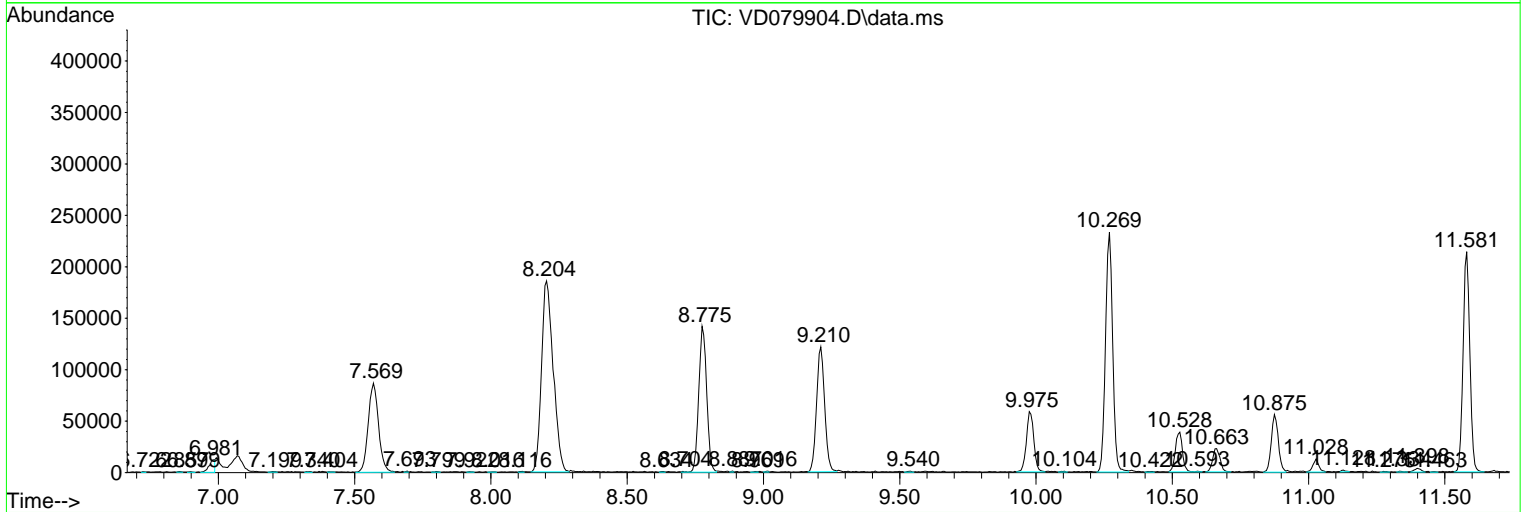
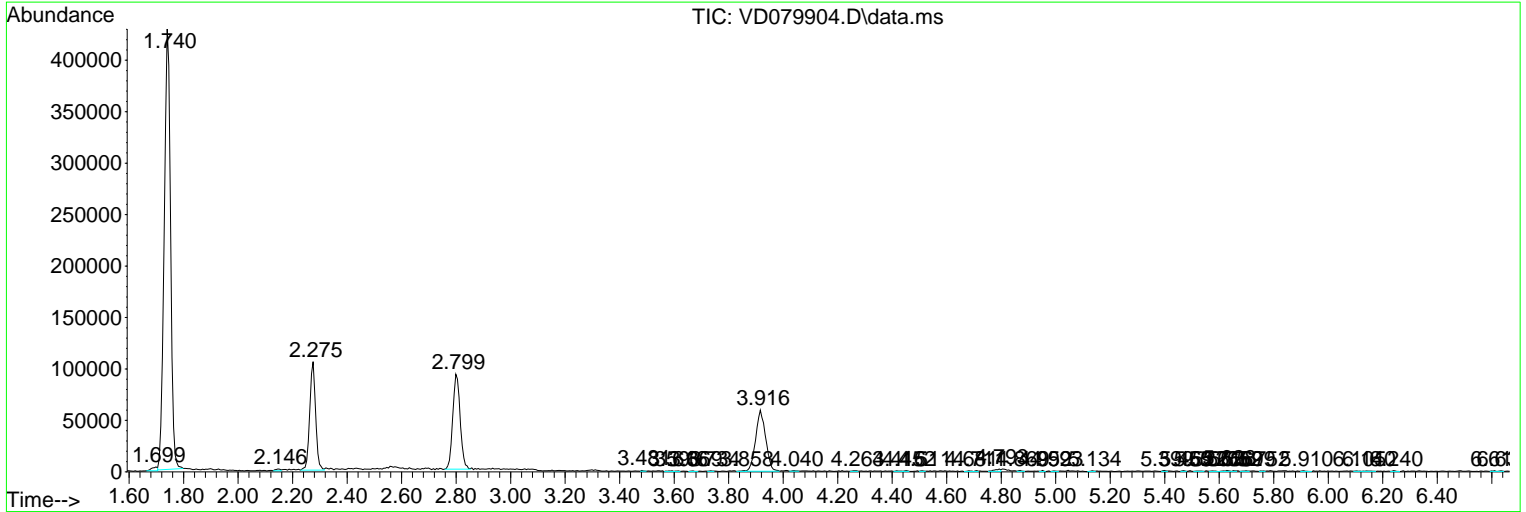
Sum of corrected areas: 4472715

Data Path : Z:\voasrv\HPCHEM1\MSVOA\_D\Data\VD092624\  
 Data File : VD079904.D  
 Acq On : 26 Sep 2024 12:53  
 Operator : RP/MD  
 Sample : VD0926SBL01  
 Misc : 5.00G/10ml/MSVOA\_D/SOIL  
 ALS Vial : 4 Sample Multiplier: 1

Instrument :  
 MSVOA\_D  
 ClientSampleId :  
 VBLK822

Quant Method : Z:\voasrv\HPCHEM1\MSVOA\_D\Method\SFAMDLM091024SMA.M  
 Quant Title : SFAM01.0

TIC Library : C:\Database\NIST20.L  
 TIC Integration Parameters: LSCINT.P



Library Search Compound Report

Data Path : Z:\voasrv\HPCHEM1\MSVOA\_D\Data\VD092624\  
Data File : VD079904.D  
Acq On : 26 Sep 2024 12:53  
Operator : RP/MD  
Sample : VD0926SBL01  
Misc : 5.00G/10ml/MSVOA\_D/SOIL  
ALS Vial : 4 Sample Multiplier: 1

Instrument :  
MSVOA\_D  
ClientSampleId :  
VBLK822

Quant Method : Z:\voasrv\HPCHEM1\MSVOA\_D\Method\SFAMDLM091024SMA.M  
Quant Title : SFAM01.0

TIC Library : C:\Database\NIST20.L  
TIC Integration Parameters: LSCINT.P

No Library Search Compounds Detected

\*\*\*\*\*

Data Path : Z:\voasrv\HPCHEM1\MSVOA\_D\Data\VD092624\  
Data File : VD079904.D  
Acq On : 26 Sep 2024 12:53  
Operator : RP/MD  
Sample : VD0926SBL01  
Misc : 5.00G/10ml/MSVOA\_D/SOIL  
ALS Vial : 4 Sample Multiplier: 1

Instrument :  
MSVOA\_D  
ClientSampleId :  
VBLK822

Quant Method : Z:\voasrv\HPCHEM1\MSVOA\_D\Method\SFAMDLM091024SMA.M  
Quant Title : SFAM01.0

TIC Library : C:\Database\NIST20.L  
TIC Integration Parameters: LSCINT.P

TIC Top Hit name	RT	EstConc	Units	Response	--Internal Standard--		
					#	RT	Resp Conc

---