

Data Path : Z:\voasrv\HPCHEM1\MSVOA\_D\Data\VD092724\  
 Data File : VD079919.D  
 Acq On : 27 Sep 2024 13:46  
 Operator : RP/MD  
 Sample : VD0927SBL01  
 Misc : 5.00G/10ml/MSVOA\_D/SOIL  
 ALS Vial : 4 Sample Multiplier: 1

Instrument :  
 MSVOA\_D  
 ClientSampleId :  
 VBLK823

Integration Parameters: LSCINT.P

Integrator: RTE  
 Smoothing : OFF  
 Sampling : 1  
 Start Thrs: 0.2  
 Stop Thrs : 0

Filtering: 5  
 Min Area: 0 % of largest Peak  
 Max Peaks: 100  
 Peak Location: TOP

If leading or trailing edge < 100 prefer < Baseline drop else tangent >  
 Peak separation: 5

Method : Z:\voasrv\HPCHEM1\MSVOA\_D\Method\SFAMDLM091024SMA.M  
 Title : SFAM01.0

Signal : TIC: VD079919.D\data.ms

peak #	R.T. min	first scan	max scan	last scan	PK TY	peak height	corr. area	corr. % max.	% of total
1	1.699	12	19	20	rBV	4213	7292	0.97%	0.150%
2	1.740	20	26	34	rVV	464342	749741	100.00%	15.460%
3	2.128	91	92	93	rBV	1157	572	0.08%	0.012%
4	2.275	111	117	124	rVB	108793	162146	21.63%	3.344%
5	2.799	200	206	214	rBV	98452	184640	24.63%	3.807%
6	3.293	287	290	291	rBV2	947	937	0.12%	0.019%
7	3.405	307	309	313	rBV2	647	839	0.11%	0.017%
8	3.511	323	327	328	rBV2	769	956	0.13%	0.020%
9	3.558	333	335	338	rBV2	649	850	0.11%	0.018%
10	3.658	350	352	355	rVB	618	439	0.06%	0.009%
11	3.687	355	357	358	rBV	683	453	0.06%	0.009%
12	3.746	363	367	368	rBV2	481	552	0.07%	0.011%
13	3.917	387	396	407	rBV2	60569	161873	21.59%	3.338%
14	4.099	424	427	431	rVB2	426	559	0.07%	0.012%
15	4.169	437	439	442	rVB	684	759	0.10%	0.016%
16	4.199	442	444	446	rBV	780	774	0.10%	0.016%
17	4.264	452	455	456	rBV	521	456	0.06%	0.009%
18	4.399	476	478	481	rVV2	673	572	0.08%	0.012%
19	4.611	511	514	515	rBV	486	457	0.06%	0.009%
20	4.669	521	524	526	rVB2	585	563	0.08%	0.012%
21	4.793	538	545	547	rBV4	2916	5729	0.76%	0.118%
22	4.905	562	564	566	rBV	651	481	0.06%	0.010%
23	5.011	580	582	585	rBV2	621	657	0.09%	0.014%
24	5.322	631	635	640	rVV2	627	1232	0.16%	0.025%
25	5.364	640	642	645	rVB	542	549	0.07%	0.011%
26	5.446	654	656	659	rVB	490	521	0.07%	0.011%
27	5.499	663	665	667	rBV	526	431	0.06%	0.009%
28	5.564	675	676	680	rBV2	759	686	0.09%	0.014%
29	5.646	688	690	693	rVB2	1098	906	0.12%	0.019%
30	5.840	719	723	728	rVV3	895	1637	0.22%	0.034%
31	5.916	735	736	738	rVB2	624	426	0.06%	0.009%
32	6.134	771	773	776	rVB	669	613	0.08%	0.013%
33	6.369	812	813	815	rBV	711	447	0.06%	0.009%
34	6.393	815	817	820	rVB	690	515	0.07%	0.011%
35	6.522	837	839	842	rVV	498	561	0.07%	0.012%
36	6.622	854	856	859	rBV2	586	693	0.09%	0.014%

Data Path : Z:\voasrv\HPCHEM1\MSVOA\_D\Data\VD092724\  
 Data File : VD079919.D  
 Acq On : 27 Sep 2024 13:46  
 Operator : RP/MD  
 Sample : VD0927SBL01  
 Misc : 5.00G/10ml/MSVOA\_D/SOIL  
 ALS Vial : 4 Sample Multiplier: 1

Instrument :  
 MSVOA\_D  
 ClientSampleId :  
 VBLK823

Integration Parameters: LSCINT.P

Integrator: RTE  
 Smoothing : OFF  
 Sampling : 1  
 Start Thrs: 0.2  
 Stop Thrs : 0

Filtering: 5  
 Min Area: 0 % of largest Peak  
 Max Peaks: 100  
 Peak Location: TOP

If leading or trailing edge < 100 prefer < Baseline drop else tangent >  
 Peak separation: 5

Method : Z:\voasrv\HPCHEM1\MSVOA\_D\Method\SFAMDLM091024SMA.M  
 Title : SFAM01.0

37	6.746	874	877	880	rBV2	777	1061	0.14%	0.022%
38	6.869	895	898	900	rBV	669	560	0.07%	0.012%
39	6.916	903	906	907	rBV	685	455	0.06%	0.009%
40	6.987	910	918	925	rBV	15602	42120	5.62%	0.869%
41	7.346	978	979	983	rVB2	787	598	0.08%	0.012%
42	7.381	983	985	987	rBV	569	427	0.06%	0.009%
43	7.569	1007	1017	1030	rVV2	95618	254657	33.97%	5.251%
44	7.705	1038	1040	1042	rVB	941	795	0.11%	0.016%
45	7.734	1044	1045	1048	rBV	647	568	0.08%	0.012%
46	7.846	1063	1064	1067	rVB2	817	499	0.07%	0.010%
47	7.869	1067	1068	1071	rBV2	1344	886	0.12%	0.018%
48	7.987	1086	1088	1090	rVV2	755	735	0.10%	0.015%
49	8.022	1093	1094	1097	rBV	651	635	0.08%	0.013%
50	8.205	1114	1125	1139	rBV2	200284	592629	79.04%	12.220%
51	8.481	1171	1172	1174	rVB2	663	432	0.06%	0.009%
52	8.557	1183	1185	1188	rBV2	439	492	0.07%	0.010%
53	8.593	1189	1191	1194	rVV2	668	561	0.07%	0.012%
54	8.646	1198	1200	1203	rBV2	553	640	0.09%	0.013%
55	8.775	1215	1222	1234	rVV	146897	305876	40.80%	6.307%
56	9.005	1259	1261	1262	rBV	1367	1117	0.15%	0.023%
57	9.210	1287	1296	1304	rBV	137355	279071	37.22%	5.755%
58	9.346	1317	1319	1320	rBV2	665	532	0.07%	0.011%
59	9.593	1359	1361	1363	rBV2	811	799	0.11%	0.016%
60	9.975	1419	1426	1437	rVB2	68365	127833	17.05%	2.636%
61	10.046	1437	1438	1440	rBV	641	565	0.08%	0.012%
62	10.152	1454	1456	1459	rBV3	676	862	0.11%	0.018%
63	10.269	1468	1476	1484	rBV	261274	460231	61.39%	9.490%
64	10.528	1513	1520	1530	rVB2	43970	83079	11.08%	1.713%
65	10.663	1538	1543	1549	rVB2	14622	25085	3.35%	0.517%
66	10.810	1565	1568	1570	rBV2	1063	1202	0.16%	0.025%
67	10.875	1573	1579	1587	rBV	64006	112257	14.97%	2.315%
68	10.981	1596	1597	1600	rVB	637	426	0.06%	0.009%
69	11.028	1600	1605	1614	rBV	9531	16121	2.15%	0.332%
70	11.104	1616	1618	1620	rBV	747	658	0.09%	0.014%
71	11.469	1678	1680	1683	rVB2	713	519	0.07%	0.011%
72	11.581	1692	1699	1709	rBV	232105	396000	52.82%	8.166%
73	11.681	1714	1716	1718	rVV2	2089	1577	0.21%	0.033%
74	11.793	1732	1735	1736	rBV	1165	1152	0.15%	0.024%
75	11.810	1736	1738	1739	rVB	1208	659	0.09%	0.014%
76	11.951	1759	1762	1765	rVB	705	784	0.10%	0.016%

Data Path : Z:\voasrv\HPCHEM1\MSVOA\_D\Data\VD092724\  
 Data File : VD079919.D  
 Acq On : 27 Sep 2024 13:46  
 Operator : RP/MD  
 Sample : VD0927SBL01  
 Misc : 5.00G/10ml/MSVOA\_D/SOIL  
 ALS Vial : 4 Sample Multiplier: 1

Instrument :  
 MSVOA\_D  
 ClientSampleId :  
 VBLK823

Integration Parameters: LSCINT.P

Integrator: RTE  
 Smoothing : OFF  
 Sampling : 1  
 Start Thrs: 0.2  
 Stop Thrs : 0

Filtering: 5  
 Min Area: 0 % of largest Peak  
 Max Peaks: 100  
 Peak Location: TOP

If leading or trailing edge < 100 prefer < Baseline drop else tangent >  
 Peak separation: 5

Method : Z:\voasrv\HPCHEM1\MSVOA\_D\Method\SFAMDLM091024SMA.M  
 Title : SFAM01.0

77	12.110	1788	1789	1790	rBV	814	496	0.07%	0.010%
78	12.128	1790	1792	1798	rVB4	2093	2349	0.31%	0.048%
79	12.422	1838	1842	1846	rBV3	2245	3405	0.45%	0.070%
80	12.581	1863	1869	1874	rVB2	8790	14351	1.91%	0.296%
81	12.646	1874	1880	1888	rBV	92676	160654	21.43%	3.313%
82	12.898	1921	1923	1927	rVB	2237	2448	0.33%	0.050%
83	12.940	1927	1930	1933	rBV2	432	565	0.08%	0.012%
84	13.340	1996	1998	2000	rBV	624	497	0.07%	0.010%
85	13.457	2016	2018	2020	rBV2	986	1106	0.15%	0.023%
86	13.516	2022	2028	2036	rVB	188932	304177	40.57%	6.272%
87	13.810	2072	2078	2086	rVB	197774	327643	43.70%	6.756%
88	14.045	2112	2118	2125	rBV3	7229	12027	1.60%	0.248%
89	14.204	2143	2145	2146	rBV	898	725	0.10%	0.015%
90	14.298	2159	2161	2162	rBV	874	481	0.06%	0.010%
91	14.645	2218	2220	2221	rBV2	670	486	0.06%	0.010%
92	14.769	2239	2241	2243	rVB2	1023	614	0.08%	0.013%
93	14.834	2250	2252	2254	rBV2	728	517	0.07%	0.011%
94	15.475	2356	2361	2366	rBV3	3065	5959	0.79%	0.123%
95	15.663	2392	2393	2396	rVB	978	589	0.08%	0.012%
96	15.816	2417	2419	2420	rBV	857	462	0.06%	0.010%
97	15.916	2435	2436	2442	rVB2	1218	1121	0.15%	0.023%
98	16.222	2487	2488	2490	rBV2	1068	594	0.08%	0.012%
99	16.498	2532	2535	2537	rBV3	901	904	0.12%	0.019%
100	16.534	2540	2541	2543	rVB	1489	647	0.09%	0.013%

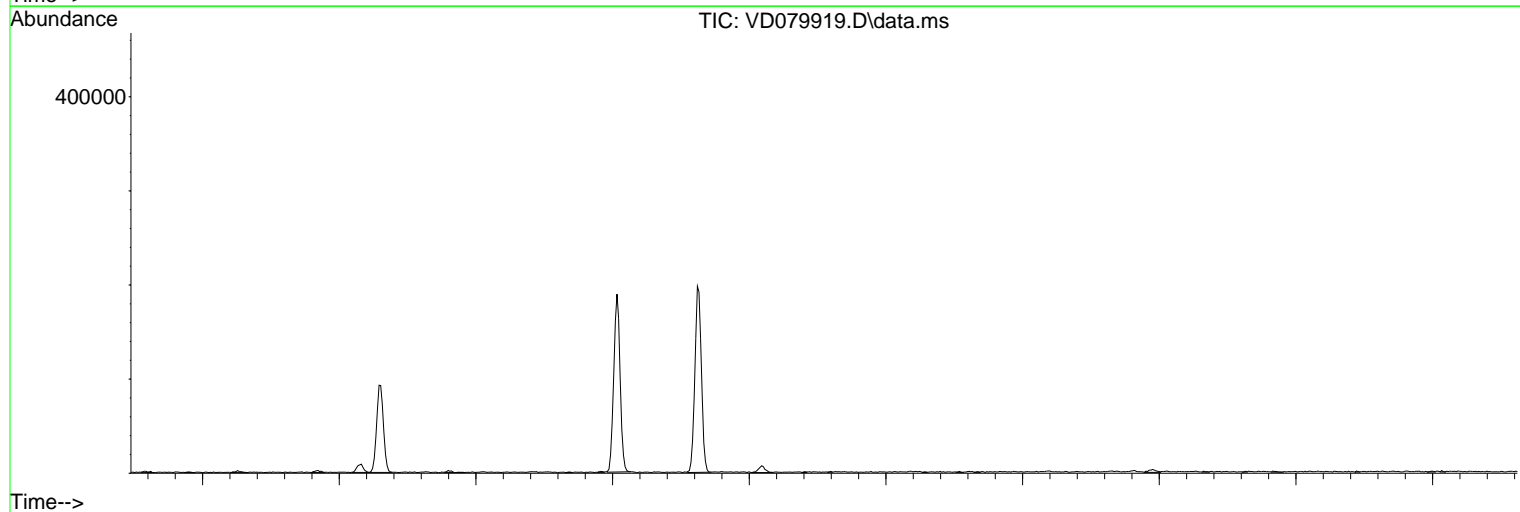
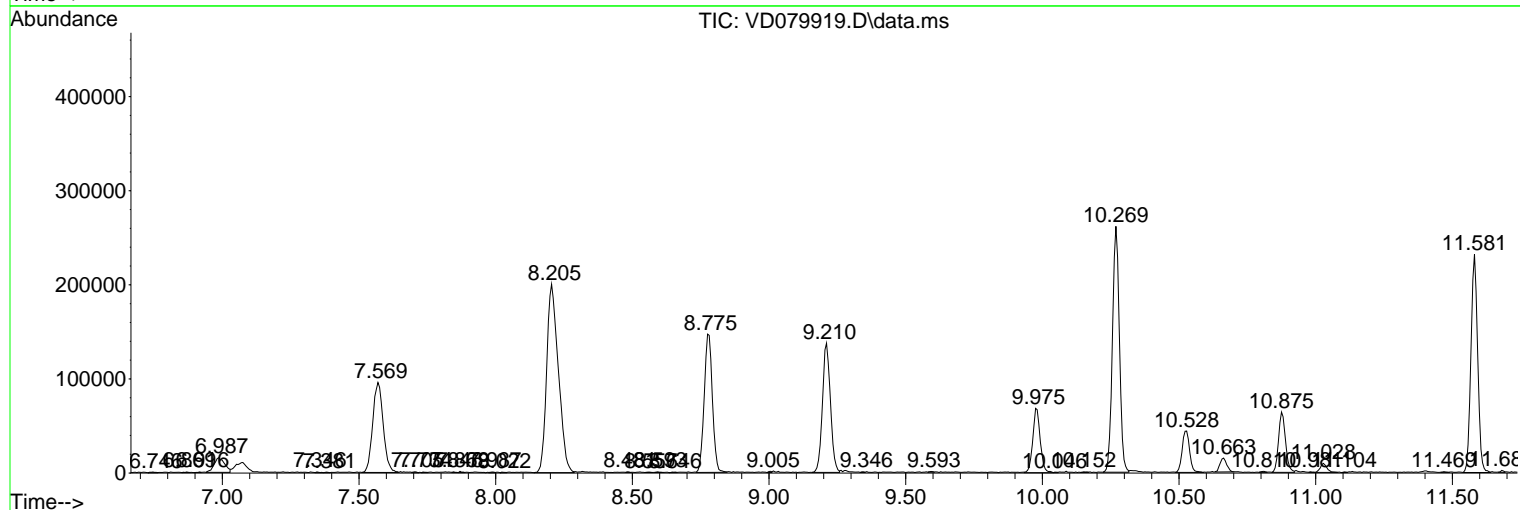
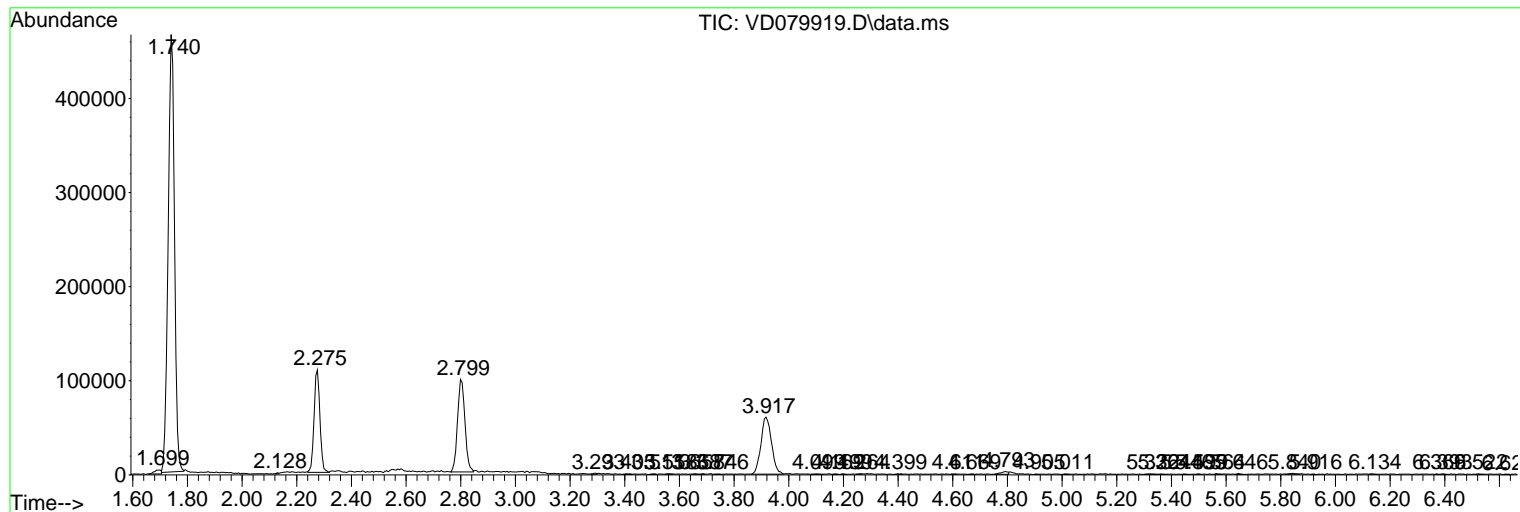
Sum of corrected areas: 4849486

Data Path : Z:\voasrv\HPCHEM1\MSVOA\_D\Data\VD092724\  
 Data File : VD079919.D  
 Acq On : 27 Sep 2024 13:46  
 Operator : RP/MD  
 Sample : VD0927SBL01  
 Misc : 5.00G/10ml/MSVOA\_D/SOIL  
 ALS Vial : 4 Sample Multiplier: 1

Instrument :  
 MSVOA\_D  
 ClientSampleId :  
 VBLK823

Quant Method : Z:\voasrv\HPCHEM1\MSVOA\_D\Method\SFAMDLM091024SMA.M  
 Quant Title : SFAM01.0

TIC Library : C:\Database\NIST20.L  
 TIC Integration Parameters: LSCINT.P



Data Path : Z:\voasrv\HPCHEM1\MSVOA\_D\Data\VD092724\  
Data File : VD079919.D  
Acq On : 27 Sep 2024 13:46  
Operator : RP/MD  
Sample : VD0927SBL01  
Misc : 5.00G/10ml/MSVOA\_D/SOIL  
ALS Vial : 4 Sample Multiplier: 1

Instrument :  
MSVOA\_D  
ClientSampleId :  
VBLK823

Quant Method : Z:\voasrv\HPCHEM1\MSVOA\_D\Method\SFAMDLM091024SMA.M  
Quant Title : SFAM01.0

TIC Library : C:\Database\NIST20.L  
TIC Integration Parameters: LSCINT.P

No Library Search Compounds Detected

\*\*\*\*\*

Data Path : Z:\voasrv\HPCHEM1\MSVOA\_D\Data\VD092724\  
Data File : VD079919.D  
Acq On : 27 Sep 2024 13:46  
Operator : RP/MD  
Sample : VD0927SBL01  
Misc : 5.00G/10ml/MSVOA\_D/SOIL  
ALS Vial : 4 Sample Multiplier: 1

Instrument :  
MSVOA\_D  
ClientSampleId :  
VBLK823

Quant Method : Z:\voasrv\HPCHEM1\MSVOA\_D\Method\SFAMDLM091024SMA.M  
Quant Title : SFAM01.0

TIC Library : C:\Database\NIST20.L  
TIC Integration Parameters: LSCINT.P

TIC Top Hit name	RT	EstConc	Units	Response	#	RT	Resp	Conc
------------------	----	---------	-------	----------	---	----	------	------

-----