

Data Path : Z:\voasrv\HPCHEM1\MSVOA_D\Data\VD110922\
 Data File : VD074845.D
 Acq On : 10 Nov 2022 00:52
 Operator : VA/SY
 Sample : N5501-01
 Misc : 5.01G/5.00ml/MSVOA_D/SOIL
 ALS Vial : 35 Sample Multiplier: 1

Instrument :
 MSVOA_D
 ClientSampleId :
 HS-3-110722

Quant Time: Nov 10 01:38:56 2022
 Quant Method : Z:\voasrv\HPCHEM1\MSVOA_D\Method\82D110222S.M
 Quant Title : SW846 8260
 QLast Update : Thu Nov 03 02:30:45 2022
 Response via : Initial Calibration

Compound	R.T.	QIon	Response	Conc	Units	Dev(Min)

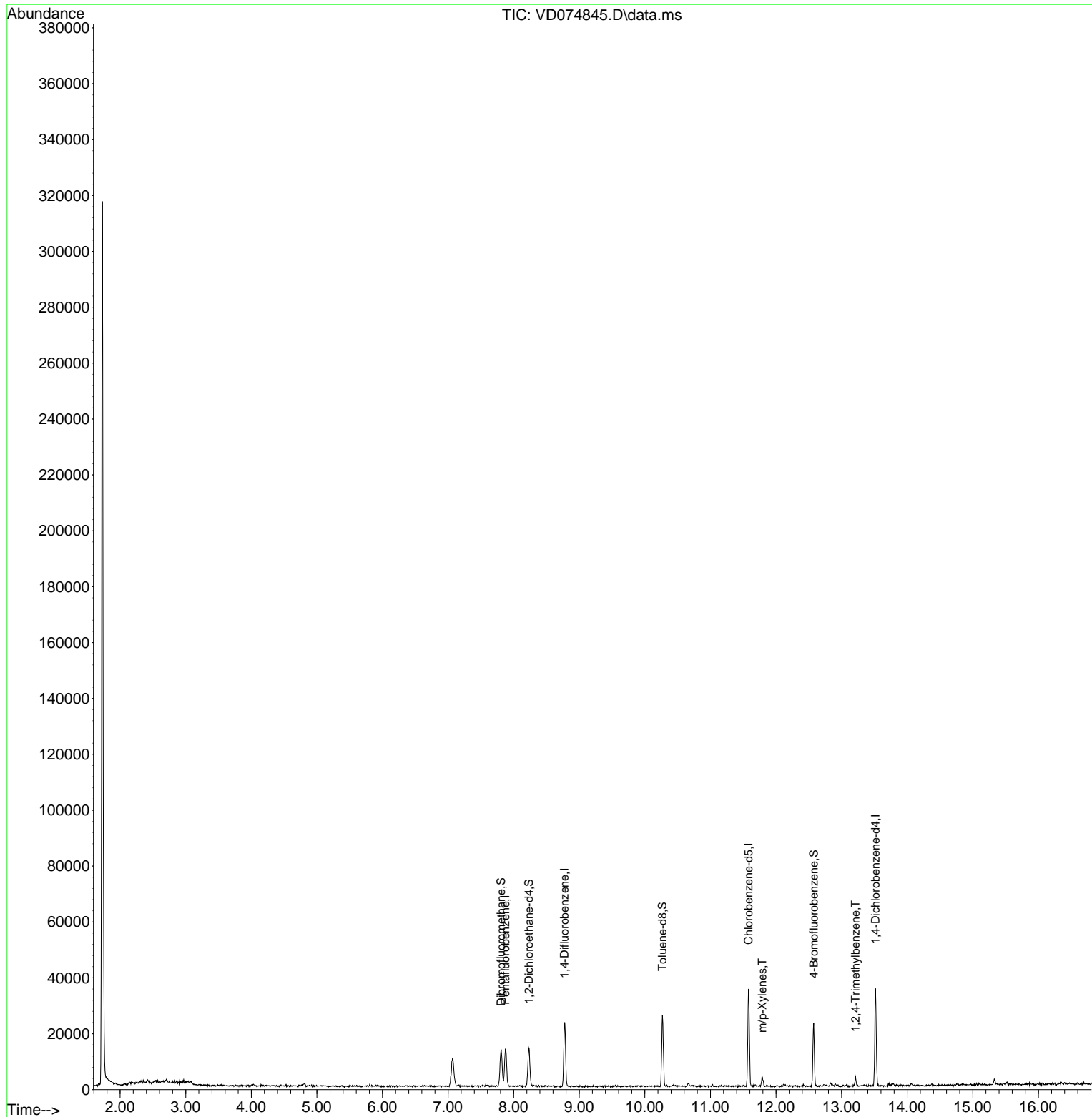
Internal Standards						
1) Pentafluorobenzene	7.875	168	12518	50.000	ug/l	0.00
34) 1,4-Difluorobenzene	8.775	114	21936	50.000	ug/l	0.00
63) Chlorobenzene-d5	11.580	117	22253	50.000	ug/l	0.00
72) 1,4-Dichlorobenzene-d4	13.516	152	10823	50.000	ug/l	0.00
System Monitoring Compounds						
33) 1,2-Dichloroethane-d4	8.233	65	11444	115.427	ug/l	0.00
Spiked Amount	50.000	Range	50 - 163	Recovery	= 230.860%#	
35) Dibromofluoromethane	7.810	113	9795	75.485	ug/l	0.00
Spiked Amount	50.000	Range	54 - 147	Recovery	= 150.980%#	
50) Toluene-d8	10.269	98	19291	40.756	ug/l	0.00
Spiked Amount	50.000	Range	49 - 140	Recovery	= 81.520%	
62) 4-Bromofluorobenzene	12.574	95	7824	57.250	ug/l	0.00
Spiked Amount	50.000	Range	25 - 144	Recovery	= 114.500%	
Target Compounds						
						Qvalue
68) m/p-Xylenes	11.792	106	1414	4.561	ug/l	86
84) 1,2,4-Trimethylbenzene	13.210	105	2455	3.857	ug/l	94

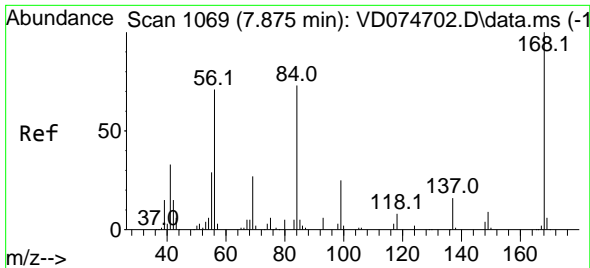
(#) = qualifier out of range (m) = manual integration (+) = signals summed

Data Path : Z:\voasrv\HPCHEM1\MSVOA_D\Data\VD110922\
 Data File : VD074845.D
 Acq On : 10 Nov 2022 00:52
 Operator : VA/SY
 Sample : N5501-01
 Misc : 5.01G/5.00ml/MSVOA_D/SOIL
 ALS Vial : 35 Sample Multiplier: 1

Instrument :
 MSVOA_D
 ClientSampleId :
 HS-3-110722

Quant Time: Nov 10 01:38:56 2022
 Quant Method : Z:\voasrv\HPCHEM1\MSVOA_D\Method\82D110222S.M
 Quant Title : SW846 8260
 QLast Update : Thu Nov 03 02:30:45 2022
 Response via : Initial Calibration

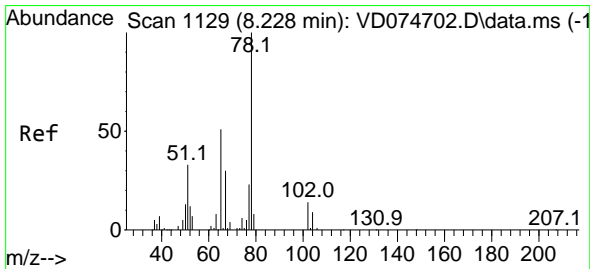
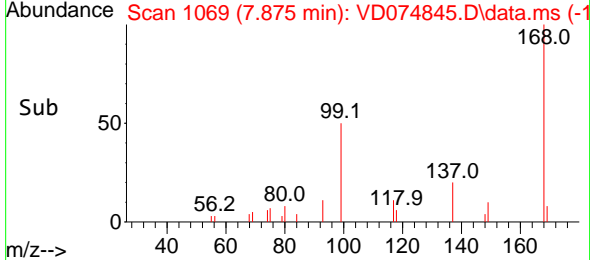
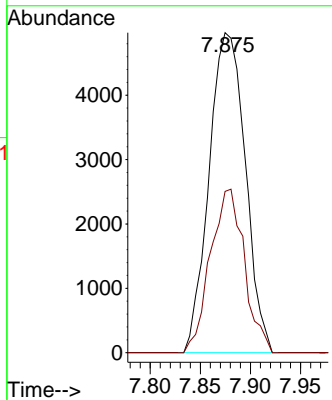
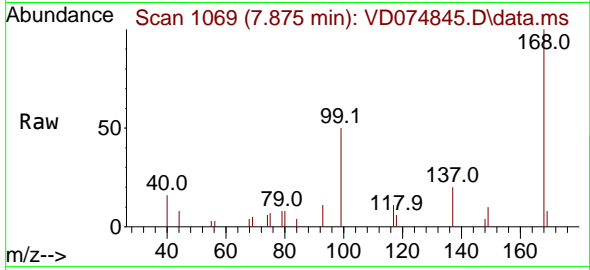




#1
 Pentafluorobenzene
 Concen: 50.000 ug/l
 RT: 7.875 min Scan# 1069
 Delta R.T. -0.000 min
 Lab File: VD074845.D
 Acq: 10 Nov 2022 00:52

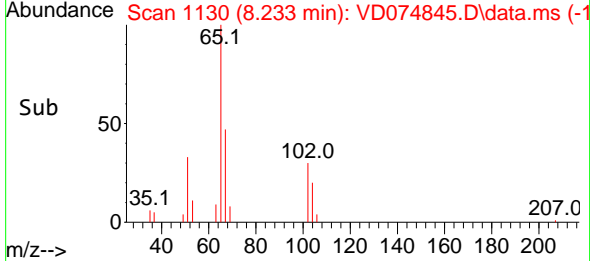
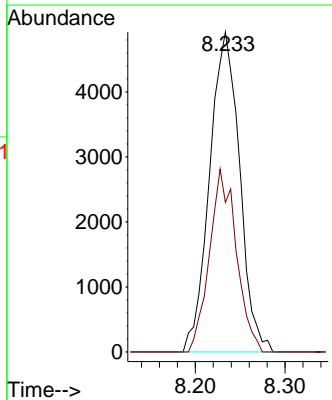
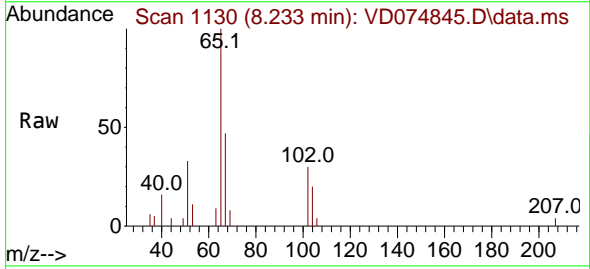
Instrument : MSVOA_D
 ClientSampleId : HS-3-110722

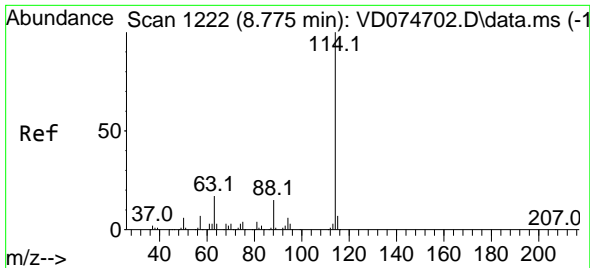
Tgt Ion:168 Resp: 12518
 Ion Ratio Lower Upper
 168 100
 99 50.4 40.9 61.3



#33
 1,2-Dichloroethane-d4
 Concen: 115.427 ug/l
 RT: 8.233 min Scan# 1130
 Delta R.T. 0.005 min
 Lab File: VD074845.D
 Acq: 10 Nov 2022 00:52

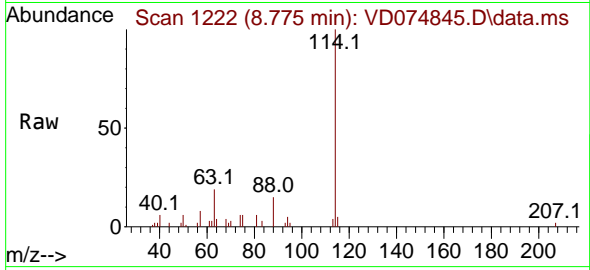
Tgt Ion: 65 Resp: 11444
 Ion Ratio Lower Upper
 65 100
 67 51.1 0.0 110.2





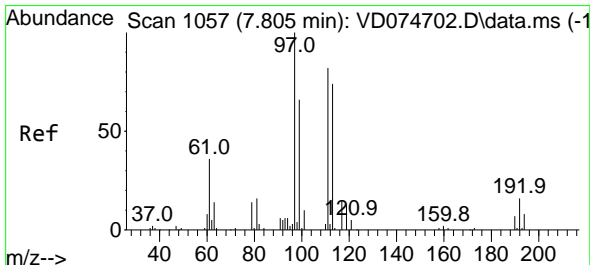
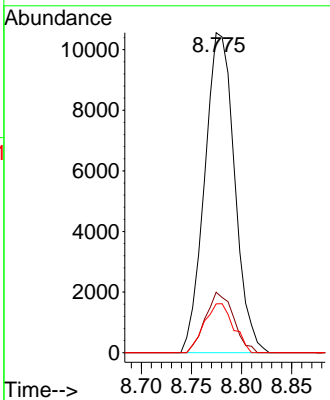
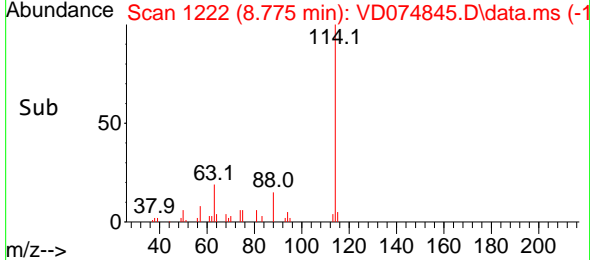
#34
 1,4-Difluorobenzene
 Concen: 50.000 ug/l
 RT: 8.775 min Scan# 111
 Delta R.T. -0.000 min
 Lab File: VD074845.D
 Acq: 10 Nov 2022 00:52

Instrument : MSVOA_D
 ClientSampleId : HS-3-110722

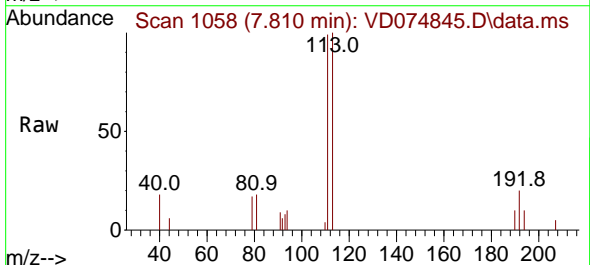


Tgt Ion:114 Resp: 21936

Ion	Ratio	Lower	Upper
114	100		
63	18.9	0.0	33.2
88	15.3	0.0	28.2

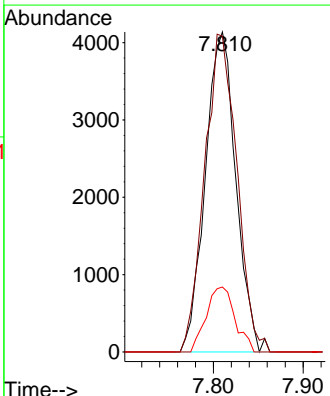
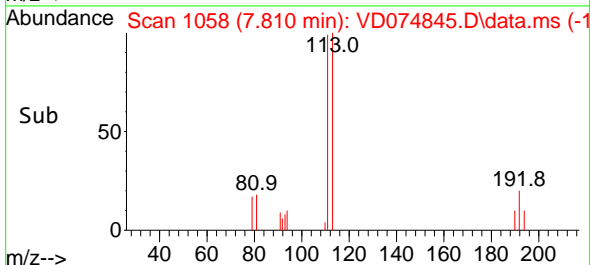


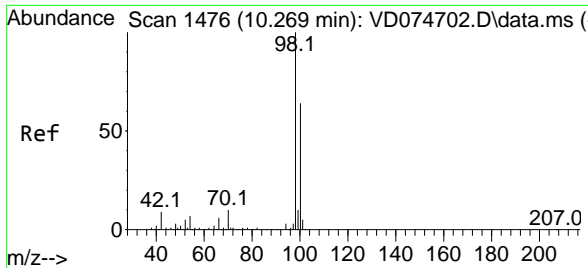
#35
 Dibromofluoromethane
 Concen: 75.485 ug/l
 RT: 7.810 min Scan# 1058
 Delta R.T. 0.005 min
 Lab File: VD074845.D
 Acq: 10 Nov 2022 00:52



Tgt Ion:113 Resp: 9795

Ion	Ratio	Lower	Upper
113	100		
111	104.6	82.3	123.5
192	19.1	16.4	24.6

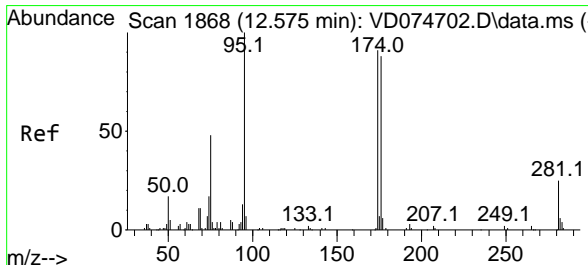
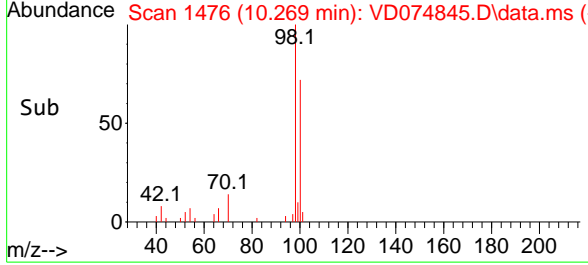
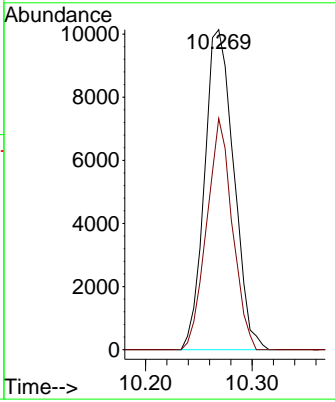
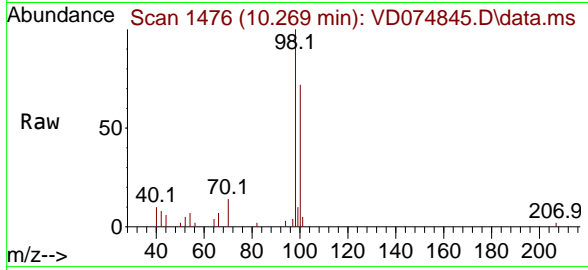




#50
 Toluene-d8
 Concen: 40.756 ug/l
 RT: 10.269 min Scan# 1476
 Delta R.T. -0.000 min
 Lab File: VD074845.D
 Acq: 10 Nov 2022 00:52

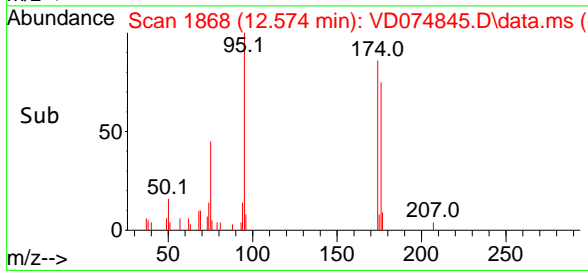
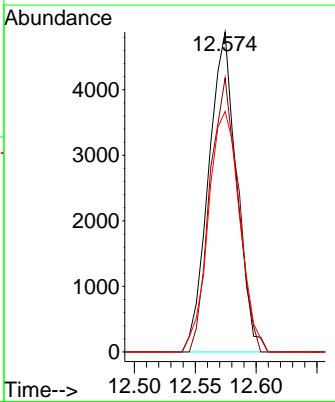
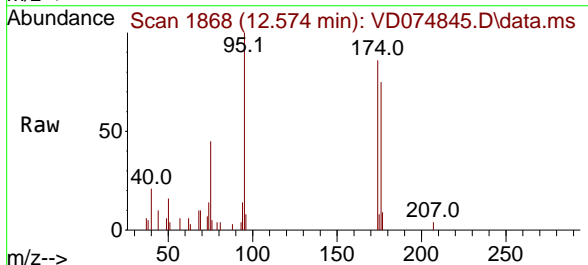
Instrument :
 MSVOA_D
ClientSampleId :
 HS-3-110722

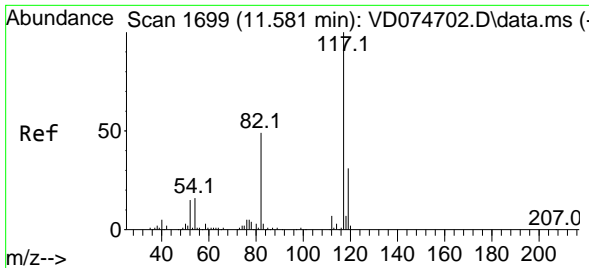
Tgt Ion: 98 Resp: 19291
 Ion Ratio Lower Upper
 98 100
 100 63.7 51.4 77.0



#62
 4-Bromofluorobenzene
 Concen: 57.250 ug/l
 RT: 12.574 min Scan# 1868
 Delta R.T. -0.001 min
 Lab File: VD074845.D
 Acq: 10 Nov 2022 00:52

Tgt Ion: 95 Resp: 7824
 Ion Ratio Lower Upper
 95 100
 174 86.1 0.0 197.0
 176 84.2 0.0 182.6



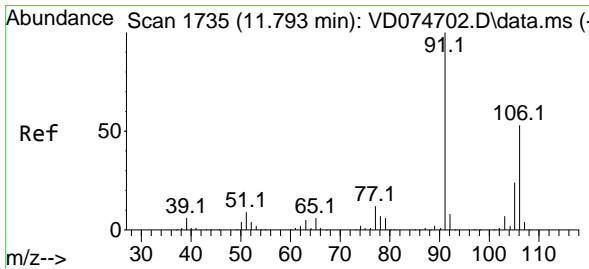
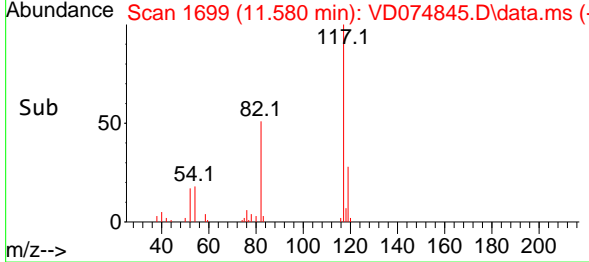
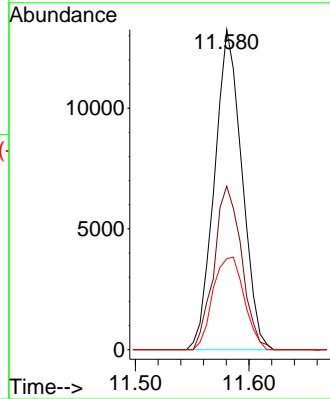
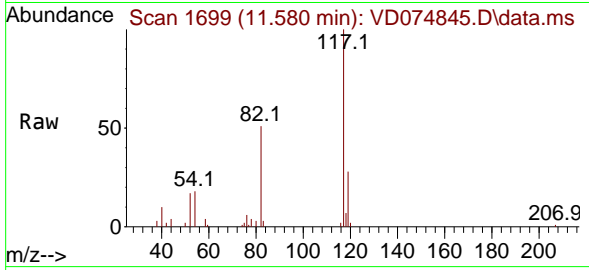


#63
 Chlorobenzene-d5
 Concen: 50.000 ug/l
 RT: 11.580 min Scan# 1699
 Delta R.T. -0.001 min
 Lab File: VD074845.D
 Acq: 10 Nov 2022 00:52

Instrument : MSVOA_D
 ClientSampleId : HS-3-110722

Tgt Ion:117 Resp: 22253

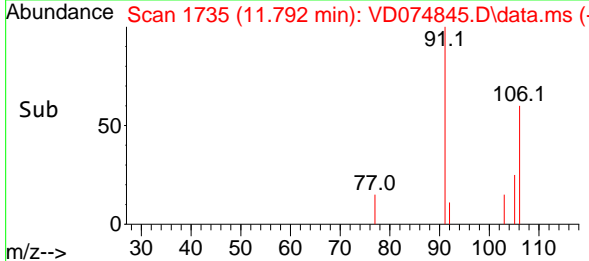
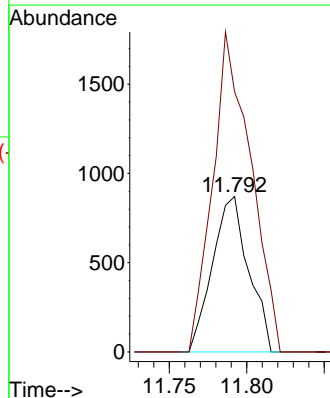
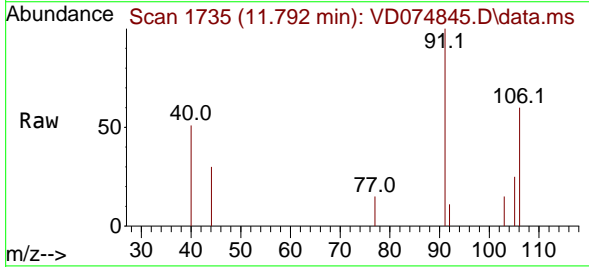
Ion	Ratio	Lower	Upper
117	100		
82	51.1	41.6	62.4
119	28.4	25.2	37.8

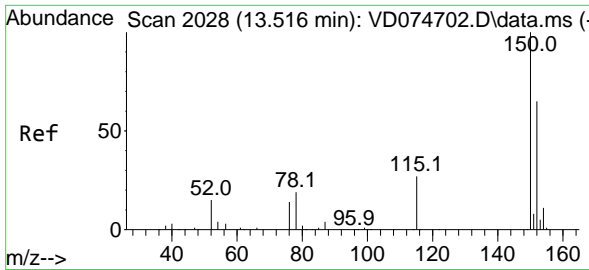


#68
 m/p-Xylenes
 Concen: 4.561 ug/l
 RT: 11.792 min Scan# 1735
 Delta R.T. -0.001 min
 Lab File: VD074845.D
 Acq: 10 Nov 2022 00:52

Tgt Ion:106 Resp: 1414

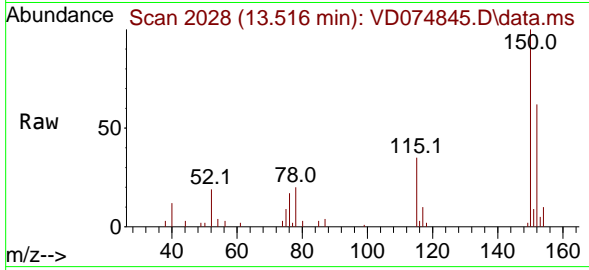
Ion	Ratio	Lower	Upper
106	100		
91	216.9	156.2	234.4



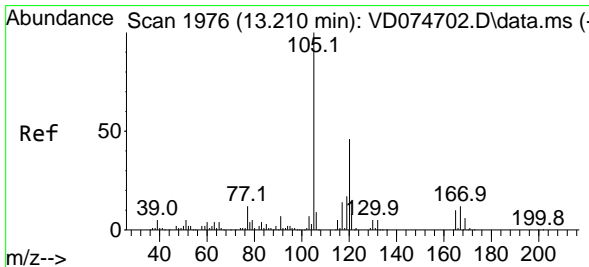
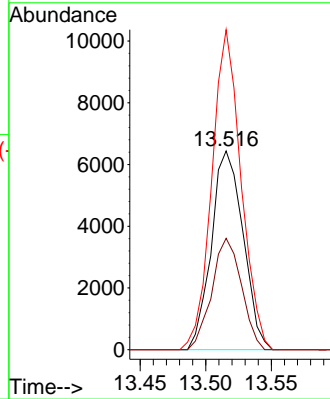
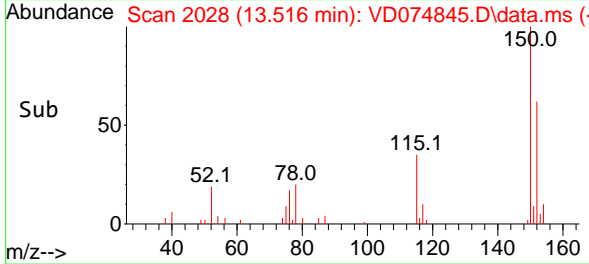


#72
 1,4-Dichlorobenzene-d4
 Concen: 50.000 ug/l
 RT: 13.516 min Scan# 20
 Delta R.T. -0.000 min
 Lab File: VD074845.D
 Acq: 10 Nov 2022 00:52

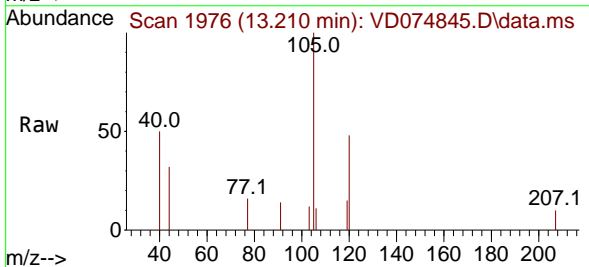
Instrument :
 MSVOA_D
 ClientSampleId :
 HS-3-110722



Tgt Ion:152 Resp: 10823
 Ion Ratio Lower Upper
 152 100
 115 52.3 26.8 80.4
 150 148.1 0.0 348.2



#84
 1,2,4-Trimethylbenzene
 Concen: 3.857 ug/l
 RT: 13.210 min Scan# 1976
 Delta R.T. -0.000 min
 Lab File: VD074845.D
 Acq: 10 Nov 2022 00:52



Tgt Ion:105 Resp: 2455
 Ion Ratio Lower Upper
 105 100
 120 41.6 22.9 68.7

