

Data Path : Z:\voasrv\HPCHEM1\MSVOA_D\Data\VD120121\
 Data File : VD071103.D
 Acq On : 01 Dec 2021 13:29
 Operator : VA/SY
 Sample : M4865-01
 Misc : 5.08G/5.00ml/MSVOA_D/SOIL
 ALS Vial : 1 Sample Multiplier: 1

Instrument :
 MSVOA_D
 ClientSampleId :
 TR-05-113021

Integration Parameters: RTEINT.P
 Integrator: RTE
 Smoothing : ON
 Sampling : 1
 Start Thrs : 0.2
 Stop Thrs : 0
 Filtering: 5
 Min Area: 3 % of largest Peak
 Max Peaks: 100
 Peak Location: TOP

If leading or trailing edge < 100 prefer < Baseline drop else tangent >
 Peak separation: 5

Method : Z:\voasrv\HPCHEM1\MSVOA_D\Method\82D112921S.M
 Title : SW846 8260

Signal : TIC: VD071103.D\data.ms

peak #	R.T. min	first scan	max scan	last scan	PK TY	peak height	corr. area	corr. % max.	% of total
1	2.026	14	18	21	rBV2	1294	2127	1.55%	0.240%
2	2.144	35	38	40	rBV3	2506	3278	2.38%	0.370%
3	2.220	46	51	52	rBV2	3674	5470	3.98%	0.618%
4	3.215	218	220	223	rVB2	1866	1604	1.17%	0.181%
5	3.250	223	226	229	rBV2	1392	2066	1.50%	0.233%
6	3.762	311	313	317	rVB	2492	2521	1.83%	0.285%
7	4.173	377	383	386	rVB3	1356	2120	1.54%	0.239%
8	4.956	513	516	517	rBV2	2230	2671	1.94%	0.302%
9	4.973	517	519	523	rVB3	2954	2647	1.92%	0.299%
10	5.185	552	555	559	rVB3	2156	2996	2.18%	0.338%
11	5.250	564	566	570	rVB2	1377	2033	1.48%	0.230%
12	5.473	601	604	608	rBV2	957	1807	1.31%	0.204%
13	5.903	676	677	680	rBV	2163	1938	1.41%	0.219%
14	6.579	788	792	797	rVB2	1274	1762	1.28%	0.199%
15	6.667	805	807	810	rBV	1991	1623	1.18%	0.183%
16	7.179	890	894	896	rBV3	3760	4428	3.22%	0.500%
17	7.197	896	897	902	rVB3	3516	3282	2.39%	0.371%
18	7.591	961	964	966	rBV2	1597	1734	1.26%	0.196%
19	7.814	999	1002	1006	rVB2	1640	2235	1.62%	0.252%
20	7.914	1013	1019	1024	rBV4	15317	35857	26.07%	4.048%
21	7.979	1024	1030	1038	rVB2	29523	58029	42.18%	6.552%
22	8.073	1044	1046	1051	rVB	1812	2471	1.80%	0.279%
23	8.120	1051	1054	1055	rBV2	2255	1771	1.29%	0.200%
24	8.197	1065	1067	1071	rVB2	1383	2008	1.46%	0.227%
25	8.232	1071	1073	1080	rBV2	1570	3319	2.41%	0.375%
26	8.332	1080	1090	1100	rVV3	22830	53983	39.24%	6.095%
27	8.555	1124	1128	1133	rBV3	1083	2103	1.53%	0.237%
28	8.697	1149	1152	1157	rVB2	1538	2084	1.51%	0.235%
29	8.861	1173	1180	1190	rVB	44628	93006	67.61%	10.501%
30	8.938	1190	1193	1196	rBV2	1396	2078	1.51%	0.235%
31	9.514	1288	1291	1292	rBV2	1401	1607	1.17%	0.181%
32	10.038	1376	1380	1382	rBV	1317	1794	1.30%	0.203%
33	10.338	1423	1431	1438	rBV	67695	128508	93.42%	14.509%
34	10.596	1473	1475	1478	rBV2	1583	1614	1.17%	0.182%
35	10.855	1518	1519	1522	rBV	1872	2143	1.56%	0.242%
36	10.885	1522	1524	1528	rVB2	1942	2104	1.53%	0.238%

Data Path : Z:\voasrv\HPCHEM1\MSVOA_D\Data\VD120121\
 Data File : VD071103.D
 Acq On : 01 Dec 2021 13:29
 Operator : VA/SY
 Sample : M4865-01
 Misc : 5.08G/5.00ml/MSVOA_D/SOIL
 ALS Vial : 1 Sample Multiplier: 1

Instrument :
 MSVOA_D
 ClientSampleId :
 TR-05-113021

Integration Parameters: RTEINT.P

Integrator: RTE
 Smoothing : ON
 Sampling : 1
 Start Thrs: 0.2
 Stop Thrs : 0

Filtering: 5
 Min Area: 3 % of largest Peak
 Max Peaks: 100
 Peak Location: TOP

If leading or trailing edge < 100 prefer < Baseline drop else tangent >
 Peak separation: 5

Method : Z:\voasrv\HPCHEM1\MSVOA_D\Method\82D112921S.M
 Title : SW846 8260

37	11.008	1544	1545	1549	rBV	2038	2036	1.48%	0.230%
38	11.391	1607	1610	1613	rVB2	1760	1727	1.26%	0.195%
39	11.638	1645	1652	1660	rVB2	77254	133432	97.00%	15.065%
40	11.838	1683	1686	1688	rBV2	1722	1806	1.31%	0.204%
41	12.038	1715	1720	1724	rVB2	1442	2722	1.98%	0.307%
42	12.261	1755	1758	1760	rVB	2122	2046	1.49%	0.231%
43	12.291	1760	1763	1767	rBV2	1419	2655	1.93%	0.300%
44	12.455	1789	1791	1794	rBV2	2046	2678	1.95%	0.302%
45	12.626	1813	1820	1827	rVB	59931	104860	76.23%	11.839%
46	12.802	1849	1850	1854	rBV	2328	2357	1.71%	0.266%
47	12.873	1860	1862	1866	rBV2	1509	1695	1.23%	0.191%
48	12.908	1866	1868	1870	rBV	1942	1682	1.22%	0.190%
49	13.202	1916	1918	1920	rBV2	2981	1750	1.27%	0.198%
50	13.479	1964	1965	1968	rBV2	1938	1811	1.32%	0.204%
51	13.567	1974	1980	1986	rBV	81410	137563	100.00%	15.531%
52	13.808	2019	2021	2023	rBV	1870	1633	1.19%	0.184%
53	13.879	2030	2033	2036	rBV2	1481	1808	1.31%	0.204%
54	14.090	2066	2069	2071	rBV3	1936	2362	1.72%	0.267%
55	14.208	2086	2089	2092	rBV3	1893	2439	1.77%	0.275%
56	14.761	2181	2183	2185	rVB2	1789	1603	1.17%	0.181%
57	14.790	2185	2188	2190	rBV3	1514	1790	1.30%	0.202%
58	15.084	2237	2238	2243	rVV4	1725	1703	1.24%	0.192%
59	15.155	2247	2250	2251	rBV2	2484	1903	1.38%	0.215%
60	15.326	2277	2279	2282	rVB2	1926	1672	1.22%	0.189%
61	15.355	2282	2284	2287	rBV	1875	2660	1.93%	0.300%
62	15.867	2369	2371	2372	rVB2	3363	2013	1.46%	0.227%
63	15.884	2372	2374	2377	rBV3	3369	3603	2.62%	0.407%
64	16.090	2407	2409	2412	rBV3	1990	1632	1.19%	0.184%
65	16.414	2462	2464	2466	rVB2	2604	1870	1.36%	0.211%
66	16.437	2466	2468	2469	rBV	1903	1732	1.26%	0.196%
67	16.514	2479	2481	2484	rVB3	3544	2258	1.64%	0.255%
68	16.561	2487	2489	2492	rBV2	3543	3565	2.59%	0.403%
69	16.673	2506	2508	2510	rVB3	2377	2150	1.56%	0.243%
70	16.743	2518	2520	2522	rBV3	2419	1581	1.15%	0.179%
71	16.773	2522	2525	2527	rBV3	1982	2095	1.52%	0.237%

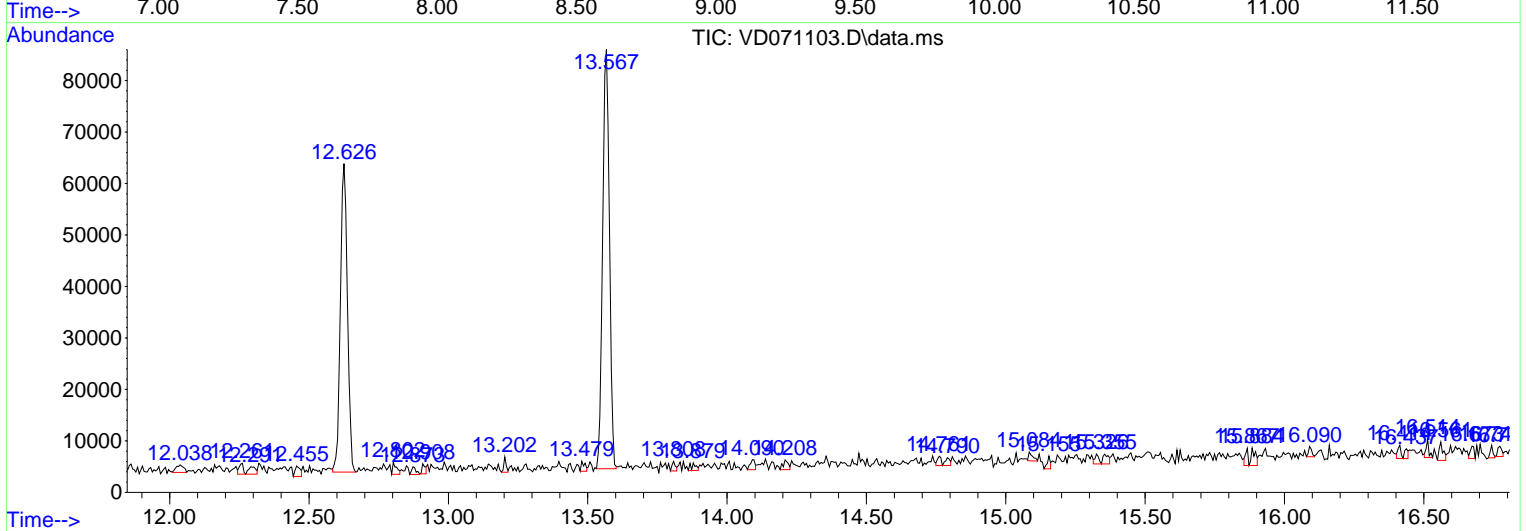
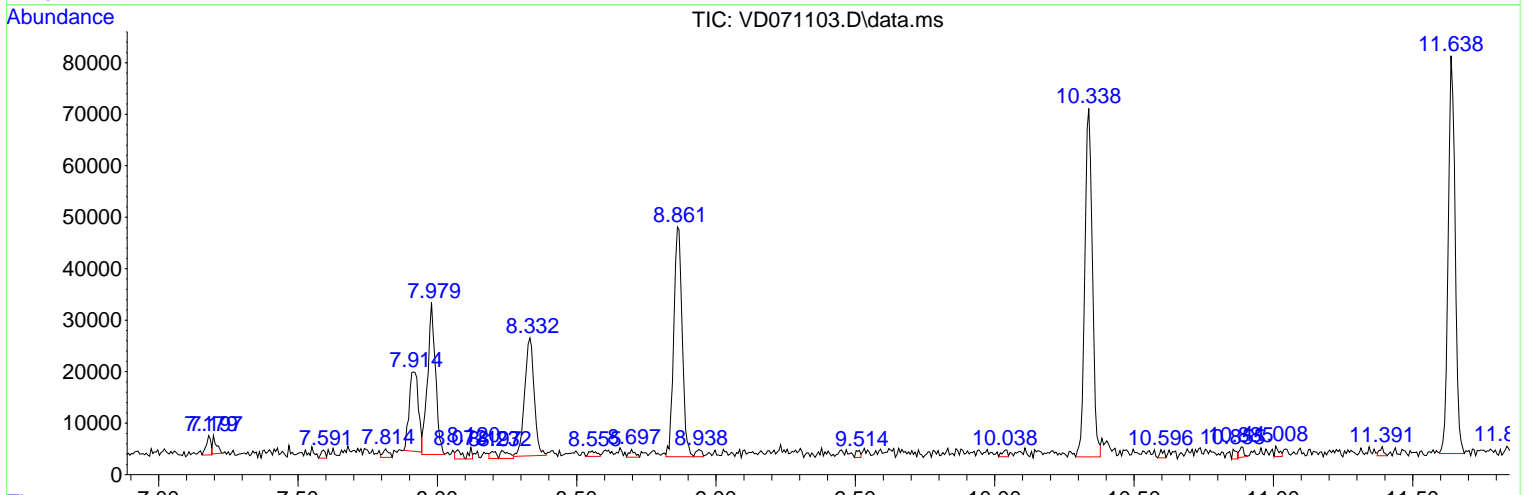
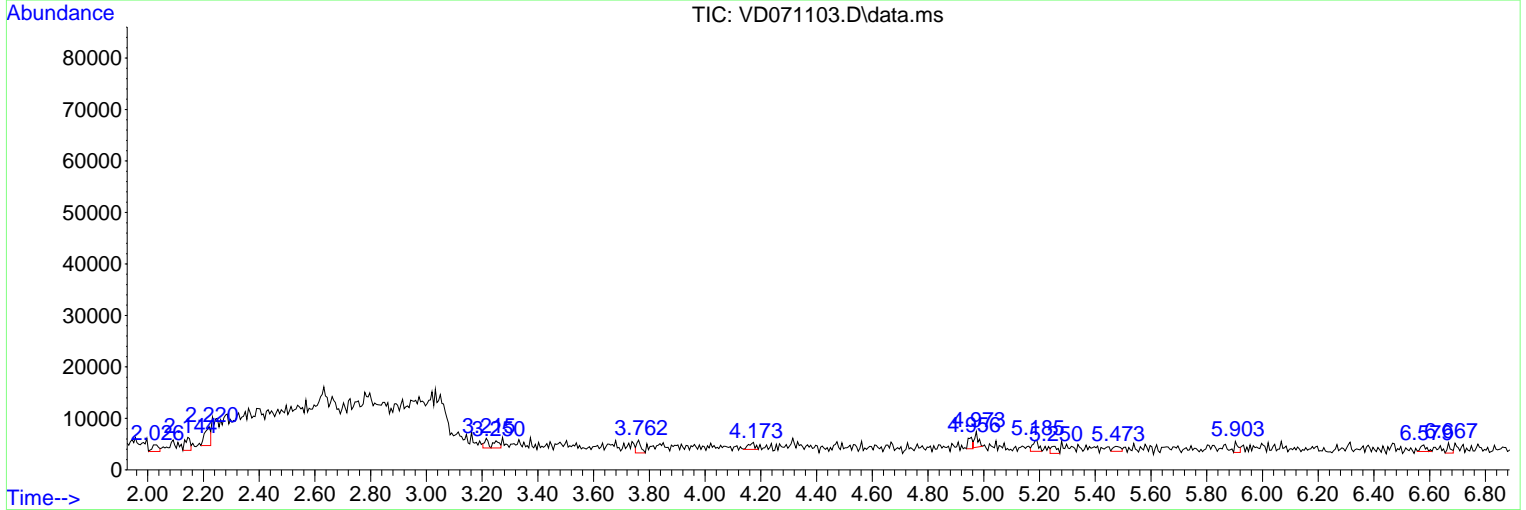
Sum of corrected areas: 885713

Data Path : Z:\voasrv\HPCHEM1\MSVOA_D\Data\VD120121\
 Data File : VD071103.D
 Acq On : 01 Dec 2021 13:29
 Operator : VA/SY
 Sample : M4865-01
 Misc : 5.08G/5.00ml/MSVOA_D/SOIL
 ALS Vial : 1 Sample Multiplier: 1

Instrument :
 MSVOA_D
 ClientSampleId :
 TR-05-113021

Quant Method : Z:\voasrv\HPCHEM1\MSVOA_D\Method\82D112921S.M
 Quant Title : SW846 8260

TIC Library : C:\Database\NIST20.L
 TIC Integration Parameters: LSCINT.P



Library Search Compound Report

Data Path : Z:\voasrv\HPCHEM1\MSVOA_D\Data\VD120121\
Data File : VD071103.D
Acq On : 01 Dec 2021 13:29
Operator : VA/SY
Sample : M4865-01
Misc : 5.08G/5.00ml/MSVOA_D/SOIL
ALS Vial : 1 Sample Multiplier: 1

Instrument :
MSVOA_D
ClientSampleId :
TR-05-113021

Quant Method : Z:\voasrv\HPCHEM1\MSVOA_D\Method\82D112921S.M
Quant Title : SW846 8260

TIC Library : C:\Database\NIST20.L
TIC Integration Parameters: LSCINT.P

No Library Search Compounds Detected

Data Path : Z:\voasrv\HPCHEM1\MSVOA_D\Data\VD120121\
Data File : VD071103.D
Acq On : 01 Dec 2021 13:29
Operator : VA/SY
Sample : M4865-01
Misc : 5.08G/5.00ml/MSVOA_D/SOIL
ALS Vial : 1 Sample Multiplier: 1

Instrument :
MSVOA_D
ClientSampleId :
TR-05-113021

Quant Method : Z:\voasrv\HPCHEM1\MSVOA_D\Method\82D112921S.M
Quant Title : SW846 8260

TIC Library : C:\Database\NIST0.L
TIC Integration Parameters: LSCINT.P

TIC Top Hit name	RT	EstConc	Units	Response	#	RT	Resp	Conc
------------------	----	---------	-------	----------	---	----	------	------
