

Data Path : Z:\voasrv\HPCHEM1\MSVOA_D\Data\VD121324\
 Data File : VD080175.D
 Acq On : 13 Dec 2024 18:47
 Operator : RP/MD
 Sample : P5226-08
 Misc : 6.40G/10ml/MSVOA_D/SOIL/A
 ALS Vial : 20 Sample Multiplier: 1

Instrument :
 MSVOA_D
 ClientSampleId :
 E2AP6

Integration Parameters: LSCINT.P

Integrator: RTE
 Smoothing : OFF
 Sampling : 1
 Start Thrs: 0.2
 Stop Thrs : 0

Filtering: 5
 Min Area: 0 % of largest Peak
 Max Peaks: 100
 Peak Location: TOP

If leading or trailing edge < 100 prefer < Baseline drop else tangent >
 Peak separation: 5

Method : Z:\voasrv\HPCHEM1\MSVOA_D\Method\SFAMDLM121324SMA.M
 Title : SFAM01.0

Signal : TIC: VD080175.D\data.ms

peak #	R.T. min	first scan	max scan	last scan	PK TY	peak height	corr. area	corr. % max.	% of total
1	1.687	13	17	20	rBV	2924	4455	0.49%	0.066%
2	1.740	20	26	35	rVV	206969	359487	39.31%	5.295%
3	2.146	93	95	97	rBV3	2322	1984	0.22%	0.029%
4	2.270	111	116	124	rBV	191174	292205	31.95%	4.304%
5	2.799	200	206	215	rVB	158514	291578	31.89%	4.295%
6	3.170	268	269	272	rBV2	1351	1169	0.13%	0.017%
7	3.287	285	289	290	rBV2	972	1267	0.14%	0.019%
8	3.558	333	335	337	rBV	1343	1474	0.16%	0.022%
9	3.646	348	350	355	rBV	2239	3017	0.33%	0.044%
10	3.699	355	359	361	rBV	1201	1813	0.20%	0.027%
11	3.770	370	371	374	rVB2	1217	1153	0.13%	0.017%
12	3.917	387	396	408	rVV2	115198	304218	33.27%	4.481%
13	4.022	412	414	416	rVV2	2096	1542	0.17%	0.023%
14	4.258	452	454	455	rBV2	2046	1715	0.19%	0.025%
15	4.411	478	480	483	rVB	1653	1549	0.17%	0.023%
16	4.475	490	491	494	rBV2	1507	1328	0.15%	0.020%
17	4.534	498	501	502	rVB2	1752	1269	0.14%	0.019%
18	4.769	538	541	543	rBV3	1895	1674	0.18%	0.025%
19	4.805	545	547	551	rVB4	3019	4075	0.45%	0.060%
20	5.364	640	642	644	rVB	1346	1114	0.12%	0.016%
21	5.411	648	650	653	rBV3	937	1041	0.11%	0.015%
22	5.640	687	689	693	rVB2	1519	1712	0.19%	0.025%
23	5.669	693	694	697	rVB2	1719	1214	0.13%	0.018%
24	5.728	703	704	708	rVB2	1622	1492	0.16%	0.022%
25	5.764	708	710	712	rBV	1648	1215	0.13%	0.018%
26	5.828	719	721	722	rBV2	1482	1491	0.16%	0.022%
27	6.175	778	780	782	rVV2	1242	1441	0.16%	0.021%
28	6.281	796	798	800	rVV2	1645	1281	0.14%	0.019%
29	6.534	837	841	843	rBV2	942	1083	0.12%	0.016%
30	6.634	854	858	860	rBV3	1209	1431	0.16%	0.021%
31	6.775	881	882	885	rVV3	1649	1308	0.14%	0.019%
32	6.993	910	919	926	rBV3	18724	52265	5.72%	0.770%
33	7.175	947	950	954	rBV2	1743	2877	0.31%	0.042%
34	7.328	973	976	978	rBV2	2128	2224	0.24%	0.033%
35	7.369	980	983	986	rBV	1884	2381	0.26%	0.035%
36	7.446	994	996	999	rBV2	2663	2288	0.25%	0.034%

Data Path : Z:\voasrv\HPCHEM1\MSVOA_D\Data\VD121324\
 Data File : VD080175.D
 Acq On : 13 Dec 2024 18:47
 Operator : RP/MD
 Sample : P5226-08
 Misc : 6.40G/10ml/MSVOA_D/SOIL/A
 ALS Vial : 20 Sample Multiplier: 1

Instrument :
 MSVOA_D
 ClientSampleId :
 E2AP6

Integration Parameters: LSCINT.P

Integrator: RTE
 Smoothing : OFF
 Sampling : 1
 Start Thrs: 0.2
 Stop Thrs : 0

Filtering: 5
 Min Area: 0 % of largest Peak
 Max Peaks: 100
 Peak Location: TOP

If leading or trailing edge < 100 prefer < Baseline drop else tangent >
 Peak separation: 5

Method : Z:\voasrv\HPCHEM1\MSVOA_D\Method\SFAMDLM121324SMA.M
 Title : SFAM01.0

37	7.569	1007	1017	1032	rBV	153237	417718	45.68%	6.153%
38	7.740	1044	1046	1050	rVB3	1820	1346	0.15%	0.020%
39	7.869	1066	1068	1071	rVB	1548	1148	0.13%	0.017%
40	7.905	1071	1074	1076	rBV	1508	1422	0.16%	0.021%
41	7.993	1087	1089	1092	rVB	2042	2042	0.22%	0.030%
42	8.022	1092	1094	1097	rBV	1408	2096	0.23%	0.031%
43	8.205	1114	1125	1139	rBV2	304569	914440	100.00%	13.470%
44	8.363	1151	1152	1153	rBV	2365	1038	0.11%	0.015%
45	8.705	1205	1210	1211	rBV2	1261	1759	0.19%	0.026%
46	8.775	1211	1222	1235	rBV	304241	621987	68.02%	9.162%
47	8.975	1253	1256	1257	rBV	1799	1866	0.20%	0.027%
48	9.210	1287	1296	1305	rBV	215219	445907	48.76%	6.568%
49	9.375	1322	1324	1329	rBV	1136	1886	0.21%	0.028%
50	9.434	1332	1334	1336	rVB3	1554	1194	0.13%	0.018%
51	9.604	1361	1363	1366	rBV3	1282	1277	0.14%	0.019%
52	9.757	1386	1389	1391	rBV2	1319	1243	0.14%	0.018%
53	9.981	1418	1427	1435	rBV	103283	202164	22.11%	2.978%
54	10.040	1435	1437	1439	rVB2	1458	1308	0.14%	0.019%
55	10.269	1468	1476	1484	rBV	389208	698388	76.37%	10.288%
56	10.522	1513	1519	1530	rVB	70700	130599	14.28%	1.924%
57	10.657	1538	1542	1548	rBV3	9653	18023	1.97%	0.265%
58	10.810	1561	1568	1574	rBV	107845	194834	21.31%	2.870%
59	10.875	1574	1579	1589	rVV2	76940	134487	14.71%	1.981%
60	10.963	1592	1594	1596	rBV3	1816	1779	0.19%	0.026%
61	11.028	1601	1605	1611	rVB3	7116	12430	1.36%	0.183%
62	11.210	1633	1636	1637	rBV	1183	1369	0.15%	0.020%
63	11.399	1664	1668	1670	rVV3	1912	2734	0.30%	0.040%
64	11.581	1691	1699	1712	rBV	389213	669524	73.22%	9.862%
65	11.740	1724	1726	1728	rVB	1473	1450	0.16%	0.021%
66	11.804	1736	1737	1739	rVB2	2023	1045	0.11%	0.015%
67	11.893	1751	1752	1756	rVB	1641	1855	0.20%	0.027%
68	11.928	1756	1758	1761	rBV2	1539	1782	0.19%	0.026%
69	12.128	1785	1792	1794	rBV4	2085	3870	0.42%	0.057%
70	12.198	1802	1804	1808	rVB3	1752	1649	0.18%	0.024%
71	12.251	1811	1813	1815	rBV	1590	1562	0.17%	0.023%
72	12.463	1848	1849	1852	rBV	1409	1078	0.12%	0.016%
73	12.581	1862	1869	1873	rVB3	6613	10861	1.19%	0.160%
74	12.651	1874	1881	1890	rVB	127858	220209	24.08%	3.244%
75	12.775	1899	1902	1906	rVB2	1935	2646	0.29%	0.039%
76	12.828	1908	1911	1914	rBV3	1197	1714	0.19%	0.025%

Data Path : Z:\voasrv\HPCHEM1\MSVOA_D\Data\VD121324\
 Data File : VD080175.D
 Acq On : 13 Dec 2024 18:47
 Operator : RP/MD
 Sample : P5226-08
 Misc : 6.40G/10ml/MSVOA_D/SOIL/A
 ALS Vial : 20 Sample Multiplier: 1

Instrument :
 MSVOA_D
 ClientSampleId :
 E2AP6

Integration Parameters: LSCINT.P

Integrator: RTE
 Smoothing : OFF Filtering: 5
 Sampling : 1 Min Area: 0 % of largest Peak
 Start Thrs: 0.2 Max Peaks: 100
 Stop Thrs : 0 Peak Location: TOP

If leading or trailing edge < 100 prefer < Baseline drop else tangent >
 Peak separation: 5

Method : Z:\voasrv\HPCHEM1\MSVOA_D\Method\SFAMDLM121324SMA.M
 Title : SFAM01.0

77	12.857	1914	1916	1918	rVB2	1375	1106	0.12%	0.016%
78	12.993	1937	1939	1943	rBV	890	1063	0.12%	0.016%
79	13.075	1950	1953	1955	rBV3	3082	3608	0.39%	0.053%
80	13.157	1964	1967	1969	rBV2	1987	2219	0.24%	0.033%
81	13.204	1972	1975	1979	rVB2	1836	2217	0.24%	0.033%
82	13.269	1981	1986	1988	rBV3	2602	3261	0.36%	0.048%
83	13.316	1992	1994	1997	rBV	1207	1149	0.13%	0.017%
84	13.422	2010	2012	2013	rBV	2132	1400	0.15%	0.021%
85	13.463	2016	2019	2020	rBV2	1010	1196	0.13%	0.018%
86	13.516	2022	2028	2035	rVB	226486	360602	39.43%	5.312%
87	13.810	2071	2078	2086	rBV	177297	295445	32.31%	4.352%
88	13.992	2107	2109	2110	rVB2	2198	1128	0.12%	0.017%
89	14.292	2158	2160	2163	rVV2	1982	1579	0.17%	0.023%
90	14.481	2189	2192	2193	rBV3	1533	1998	0.22%	0.029%
91	14.822	2246	2250	2252	rBV2	1425	2550	0.28%	0.038%
92	14.845	2252	2254	2257	rVB2	1526	1287	0.14%	0.019%
93	15.051	2287	2289	2292	rBV	1360	1467	0.16%	0.022%
94	15.328	2334	2336	2340	rVB3	2465	2526	0.28%	0.037%
95	15.357	2340	2341	2344	rBV2	1720	1314	0.14%	0.019%
96	15.404	2344	2349	2351	rBV2	3313	5401	0.59%	0.080%
97	16.404	2516	2519	2520	rBV	1519	1192	0.13%	0.018%
98	16.445	2523	2526	2527	rBV2	1433	1562	0.17%	0.023%
99	16.528	2537	2540	2543	rBV3	1395	1423	0.16%	0.021%
100	16.598	2550	2552	2555	rVB3	1874	1392	0.15%	0.021%

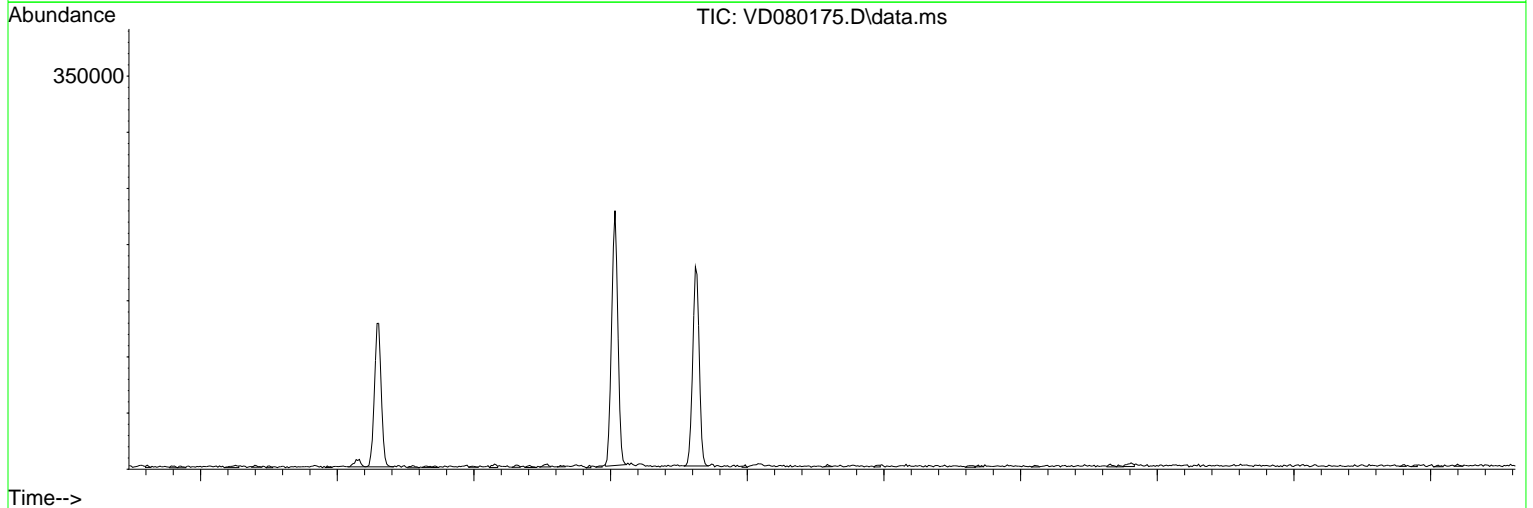
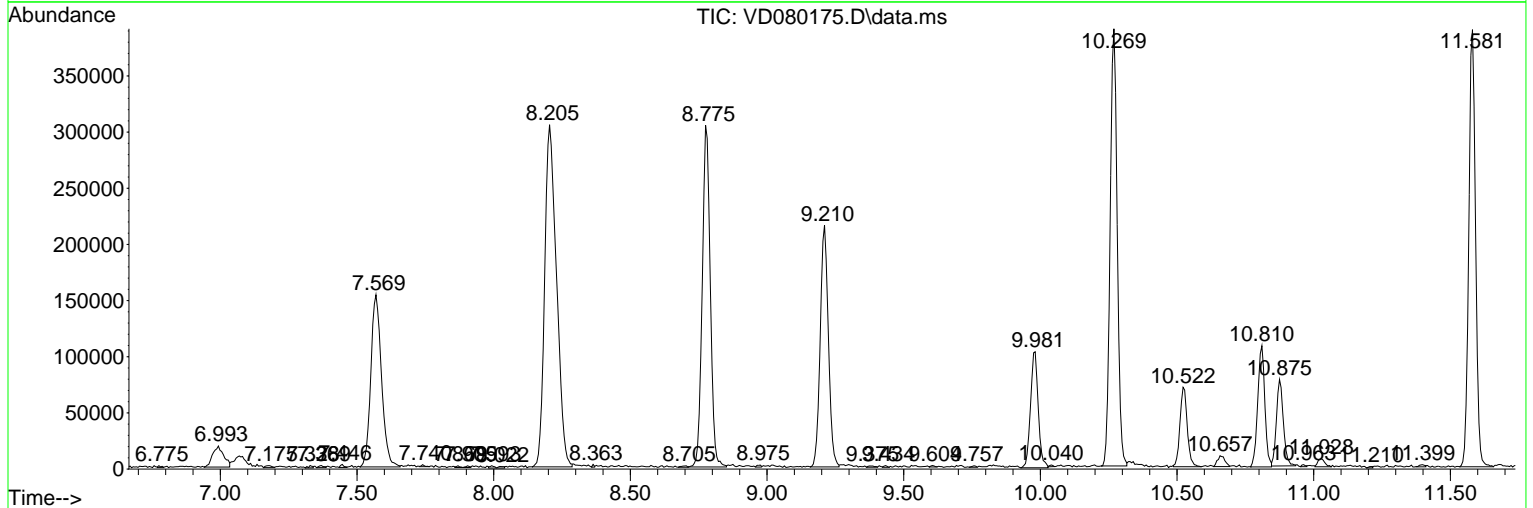
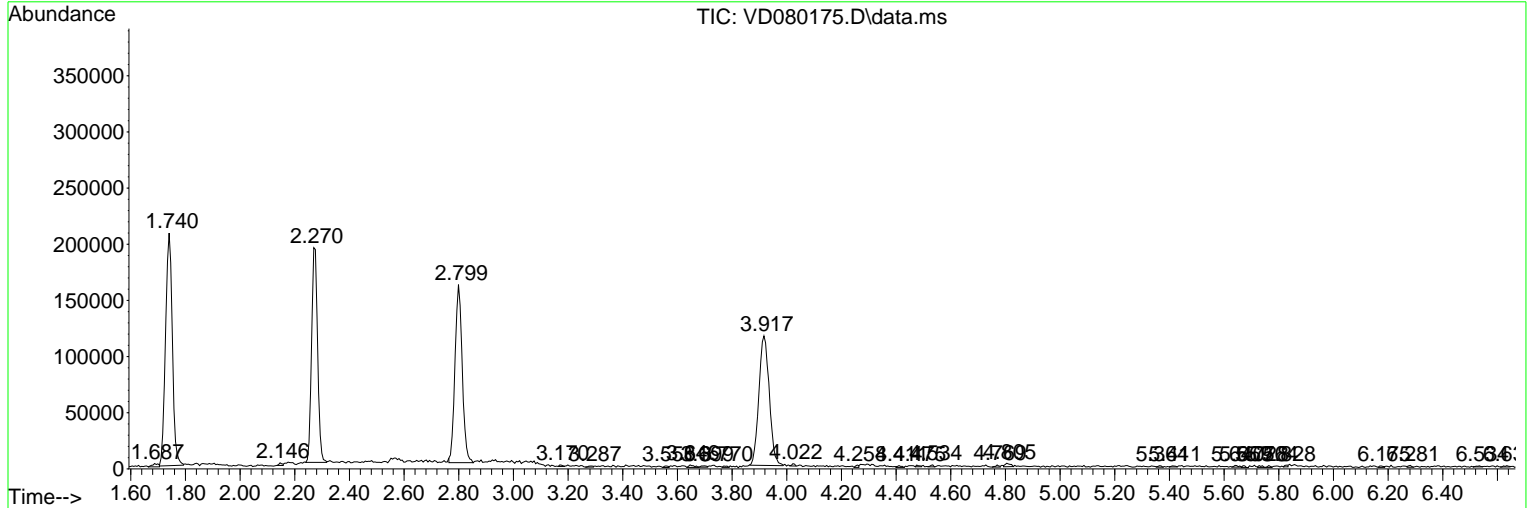
Sum of corrected areas: 6788644

Data Path : Z:\voasrv\HPCHEM1\MSVOA_D\Data\VD121324\
 Data File : VD080175.D
 Acq On : 13 Dec 2024 18:47
 Operator : RP/MD
 Sample : P5226-08
 Misc : 6.40G/10ml/MSVOA_D/SOIL/A
 ALS Vial : 20 Sample Multiplier: 1

Instrument :
 MSVOA_D
ClientSampleId :
 E2AP6

Quant Method : Z:\voasrv\HPCHEM1\MSVOA_D\Method\SFAMDLM121324SMA.M
 Quant Title : SFAM01.0

TIC Library : C:\Database\NIST20.L
 TIC Integration Parameters: LSCINT.P



Library Search Compound Report

Data Path : Z:\voasrv\HPCHEM1\MSVOA_D\Data\VD121324\
Data File : VD080175.D
Acq On : 13 Dec 2024 18:47
Operator : RP/MD
Sample : P5226-08
Misc : 6.40G/10ml/MSVOA_D/SOIL/A
ALS Vial : 20 Sample Multiplier: 1

Instrument :
MSVOA_D
ClientSampleId :
E2AP6

Quant Method : Z:\voasrv\HPCHEM1\MSVOA_D\Method\SFAMDLM121324SMA.M
Quant Title : SFAM01.0

TIC Library : C:\Database\NIST20.L
TIC Integration Parameters: LSCINT.P

No Library Search Compounds Detected

Data Path : Z:\voasrv\HPCHEM1\MSVOA_D\Data\VD121324\
Data File : VD080175.D
Acq On : 13 Dec 2024 18:47
Operator : RP/MD
Sample : P5226-08
Misc : 6.40G/10ml/MSVOA_D/SOIL/A
ALS Vial : 20 Sample Multiplier: 1

Instrument :
MSVOA_D
ClientSampleId :
E2AP6

Quant Method : Z:\voasrv\HPCHEM1\MSVOA_D\Method\SFAMDLM121324SMA.M
Quant Title : SFAM01.0

TIC Library : C:\Database\NIST20.L
TIC Integration Parameters: LSCINT.P

TIC Top Hit name	RT	EstConc	Units	Response	#	RT	Resp	Conc
------------------	----	---------	-------	----------	---	----	------	------
