

Data Path : Z:\VOASRV\HPCHEM1\MSVOA D\DATA\VD121418\
 Data File : VD060568.D
 Acq On : 14 Dec 2018 12:40
 Operator : VA/AP
 Sample : VD1214SBL01
 Misc : 5.00µ/5ml/MSVOA D/SOIL
 ALS Vial : 3 Sample Multiplier: 1

Instrument :
 MSVOA_D
 ClientSampleId :

Quant Time: Dec 14 22:21:11 2018
 Quant Method : Z:\VOASRV\HPCHEM1\MSVOA_D\METHOD\82D120518S.M
 Quant Title : SW846 8260
 QLast Update : Thu Dec 06 01:49:20 2018
 Response via : Initial Calibration

Internal Standards	R.T.	QIon	Response	Conc	Units	Dev(Min)
1) Pentafluorobenzene	6.39	168	1599869	50.00	µg/l	-0.02
34) 1,4-Difluorobenzene	7.43	114	2116940	50.00	µg/l	-0.02
63) Chlorobenzene-d5	11.27	117	1732577	50.00	µg/l	-0.01
72) 1,4-Dichlorobenzene-d4	13.36	152	871800	50.00	µg/l	-0.01

System Monitoring Compounds

33) 1,2-Dichloroethane-d4	6.77	65	570322	50.29	µg/l	-0.02
Spiked Amount				50.000		
Recovery						= 100.58%
35) Dibromofluoromethane	6.31	113	807267	51.92	µg/l	-0.02
Spiked Amount				50.000		
Recovery						= 103.84%
50) Toluene-d8	9.44	98	2355404	52.35	µg/l	-0.02
Spiked Amount				50.000		
Recovery						= 104.70%
62) 4-Bromofluorobenzene	12.42	95	815876	50.67	µg/l	-0.01
Spiked Amount				50.000		
Recovery						= 101.34%

Target Compounds

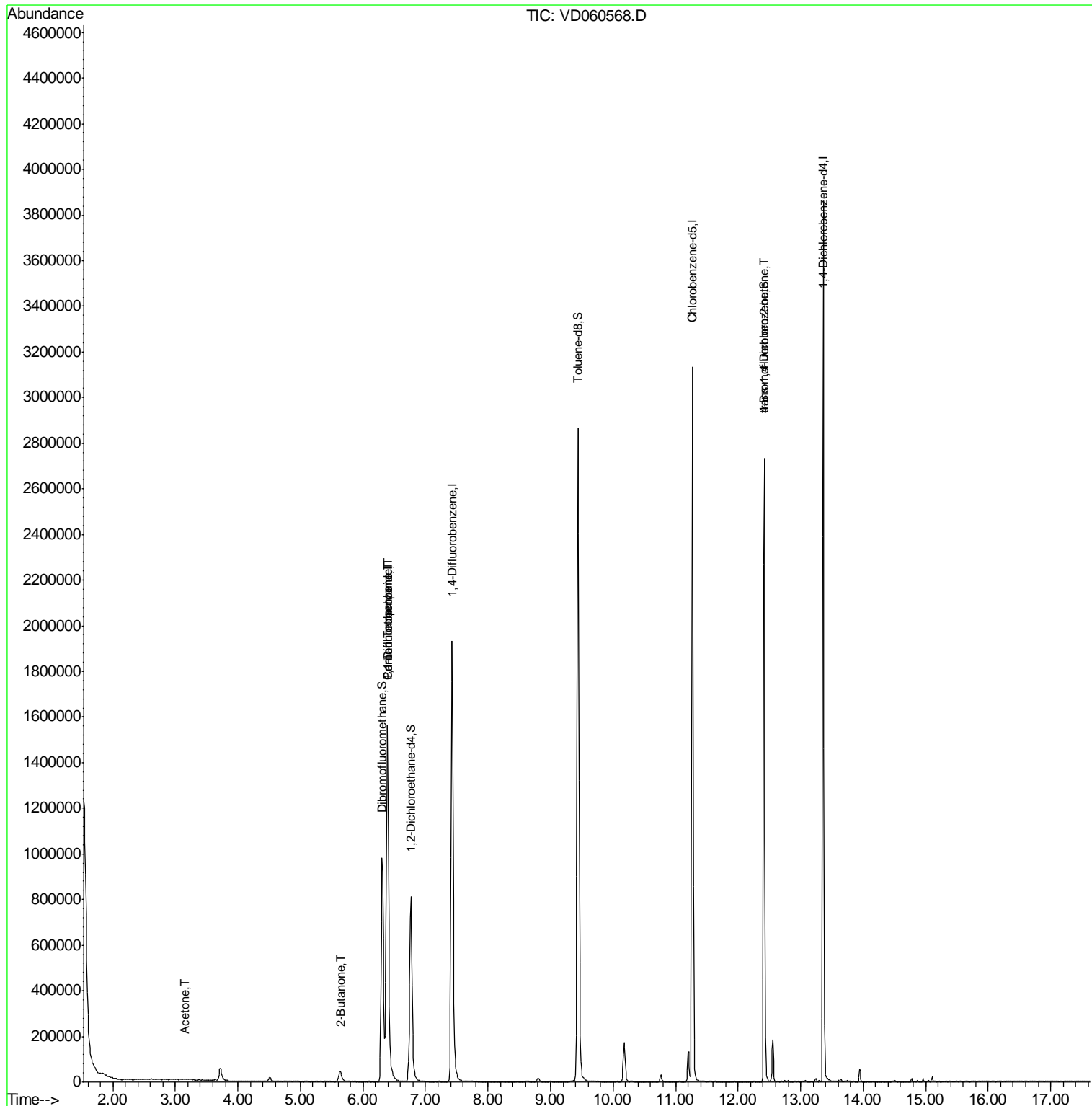
					Qvalue
2) Dichlorodifluoromethane	1.60	85	2645	Below Cal	92
16) Acetone	3.16	43	6844	3.765 µg/l #	54
20) Methylene Chloride	3.72	84	38611	Below Cal	92
25) 2-Butanone	5.63	43	6350	1.776 µg/l #	59
31) Cyclohexane	6.39	56	29499	Below Cal #	1
36) 1,1-Dichloropropene	6.38	75	113296	5.475 µg/l #	48
38) Carbon Tetrachloride	6.39	117	123498	6.648 µg/l #	16
81) trans-1,4-Dichloro-2-buten	12.42	75	325866	118.281 µg/l #	14
89) n-Butylbenzene	13.64	91	3003	Below Cal	79

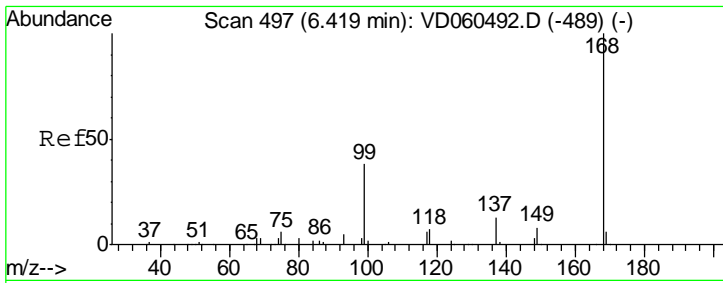
(#) = qualifier out of range (m) = manual integration (+) = signals summed

Data Path : Z:\VOASRV\HPCHEM1\MSVOA D\DATA\VD121418\
 Data File : VD060568.D
 Acq On : 14 Dec 2018 12:40
 Operator : VA/AP
 Sample : VD1214SBL01
 Misc : 5.00µl/5ml/MSVOA D/SOIL
 ALS Vial : 3 Sample Multiplier: 1

Instrument :
 MSVOA_D
 ClientSampled :

Quant Time: Dec 14 22:21:11 2018
 Quant Method : Z:\VOASRV\HPCHEM1\MSVOA_D\METHOD\82D120518S.M
 Quant Title : SW846 8260
 QLast Update : Thu Dec 06 01:49:20 2018
 Response via : Initial Calibration



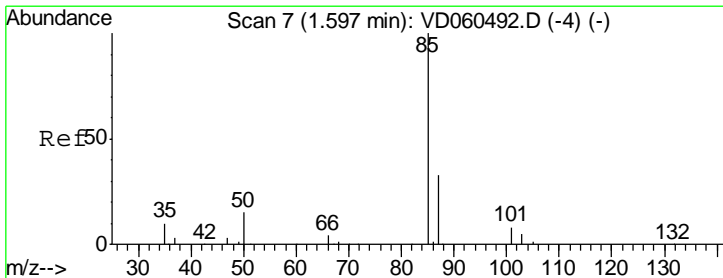
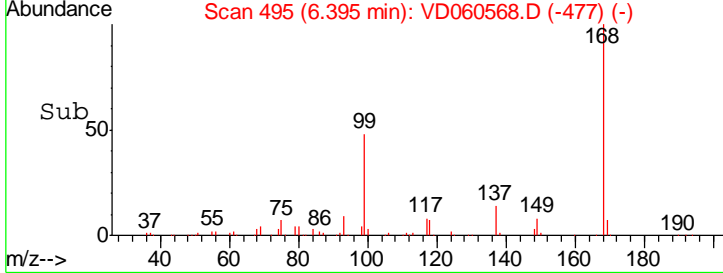
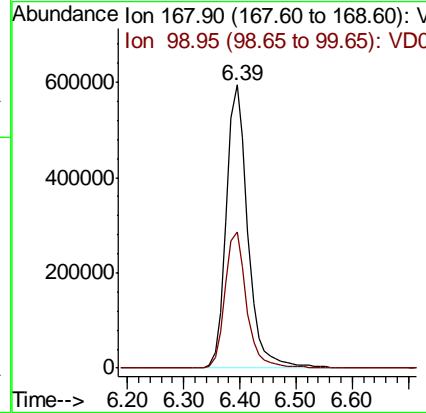
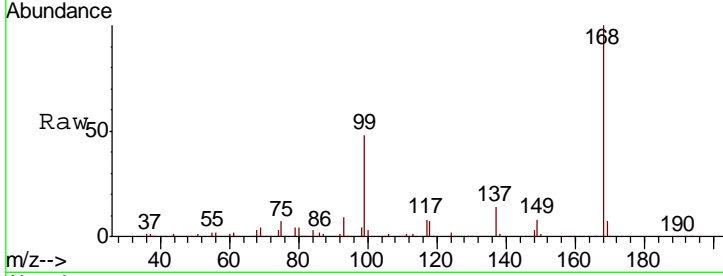


#1
 Pentafluorobenzene
 Concen: 50.000 ug/l
 RT: 6.39 min Scan# 495
 Delta R.T. -0.02 min
 Lab File: VD060568.D
 Acq: 14 Dec 2018 12:40

Instrument :
 MSVOA_D
 ClientSampled :

Tgt Ion: 168 Resp: 1599869

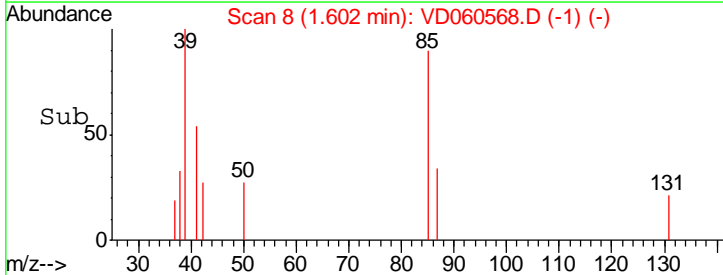
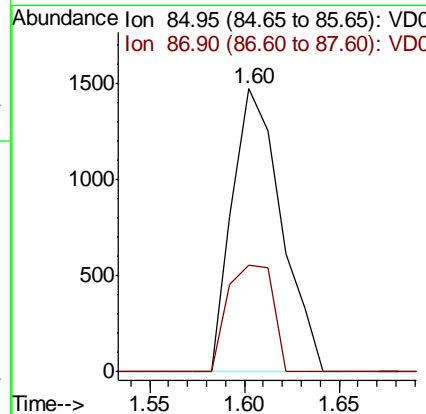
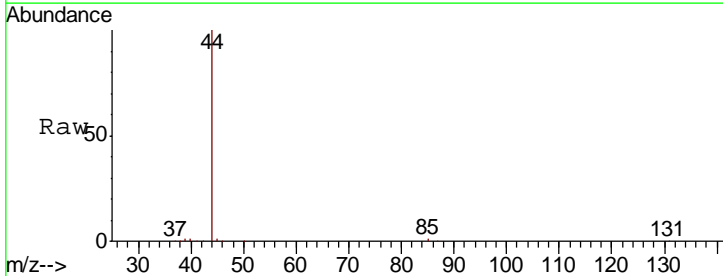
Ion	Ratio	Lower	Upper
168	100		
99	48.0	35.6	53.4

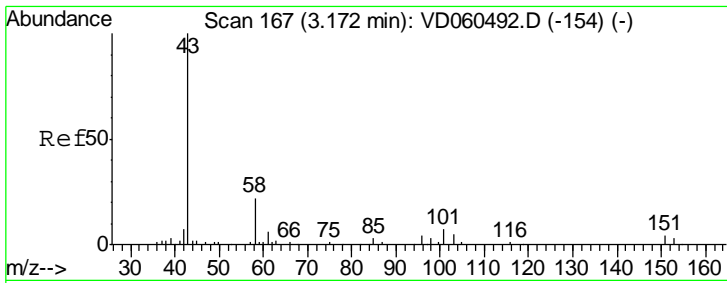


#2
 Dichlorodifluoromethane
 Concen: Below Cal
 RT: 1.60 min Scan# 8
 Delta R.T. 0.01 min
 Lab File: VD060568.D
 Acq: 14 Dec 2018 12:40

Tgt Ion: 85 Resp: 2645

Ion	Ratio	Lower	Upper
85	100		
87	37.7	16.7	50.0

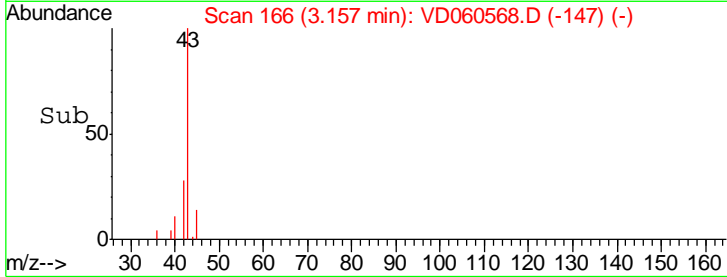
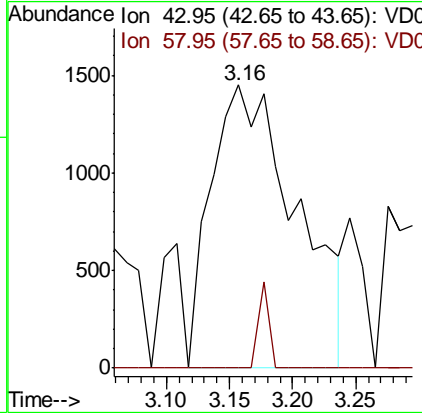
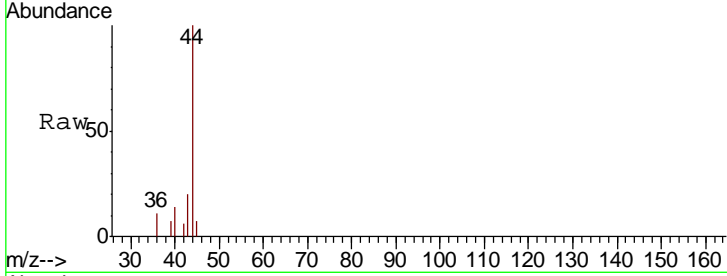




#16
 Acetone
 Concen: 3.765 ug/l
 RT: 3.16 min Scan# 166
 Delta R.T. -0.01 min
 Lab File: VD060568.D
 Acq: 14 Dec 2018 12:40

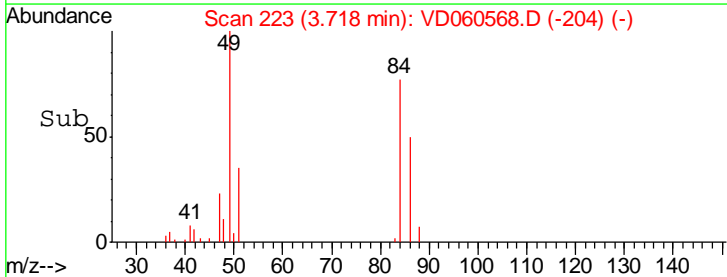
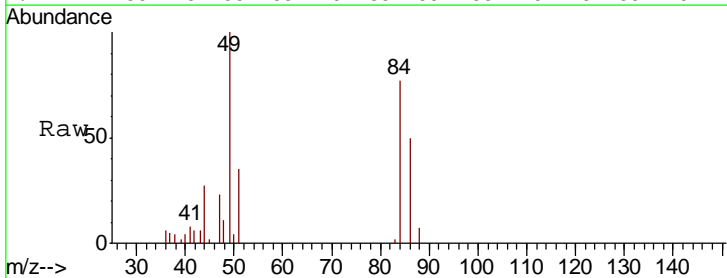
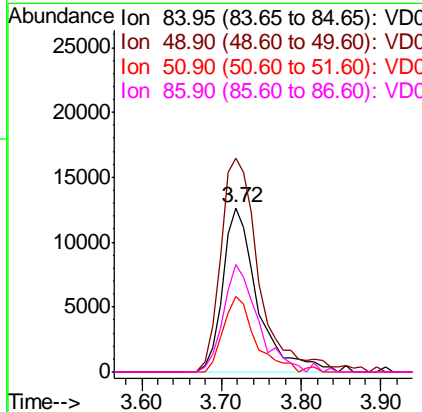
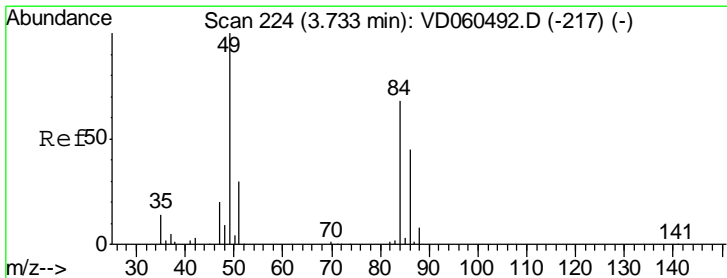
Instrument :
 MSVOA_D
 ClientSampled :

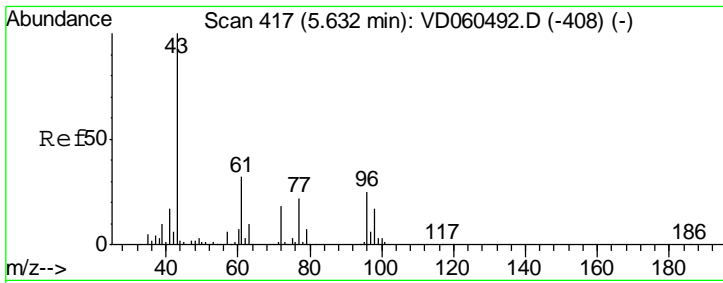
Tgt Ion	Resp	Lower	Upper
43	100		
58	0.0	17.3	25.9#



#20
 Methylene Chloride
 Concen: Below Cal
 RT: 3.72 min Scan# 223
 Delta R.T. -0.01 min
 Lab File: VD060568.D
 Acq: 14 Dec 2018 12:40

Tgt Ion	Resp	Lower	Upper
84	100		
49	130.2	117.2	175.8
51	45.8	35.3	52.9
86	65.2	53.2	79.8

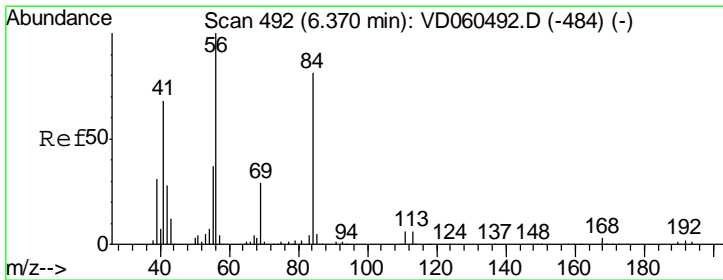
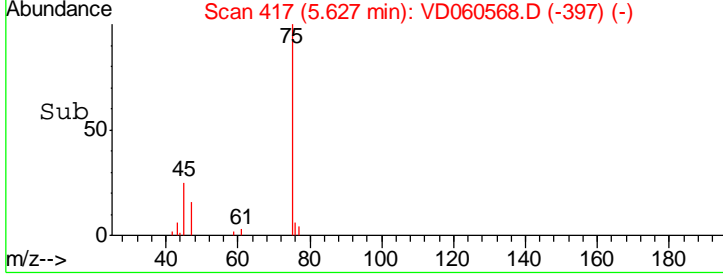
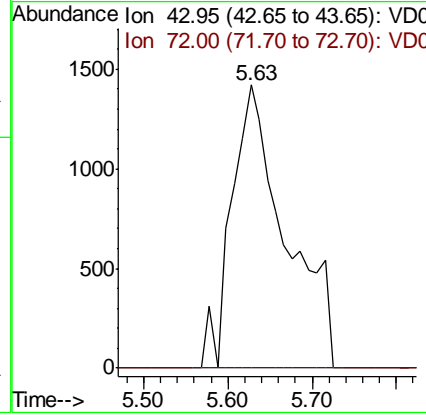
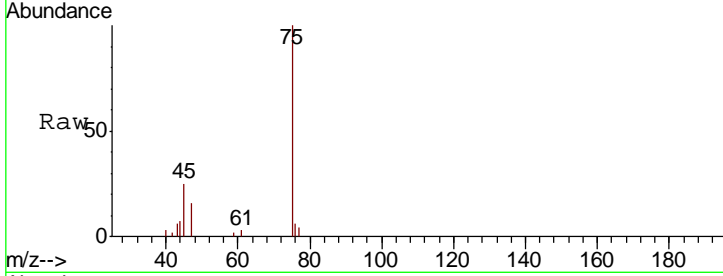




#25
 2-Butanone
 Concen: 1.776 ug/l
 RT: 5.63 min Scan# 417
 Delta R.T. -0.00 min
 Lab File: VD060568.D
 Acq: 14 Dec 2018 12:40

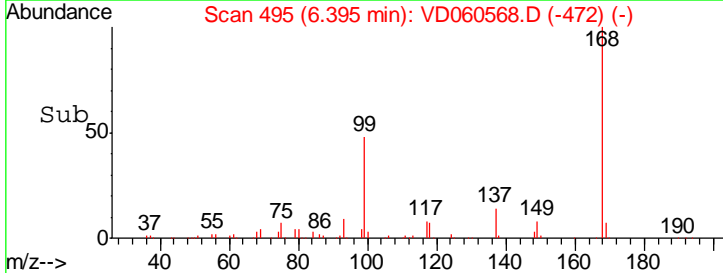
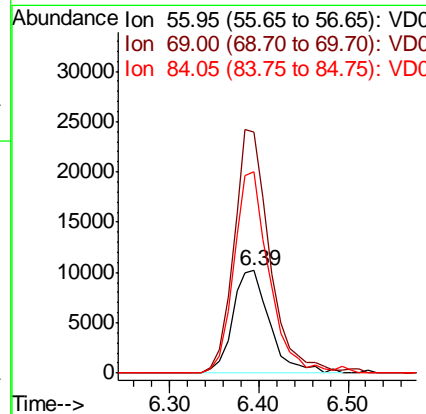
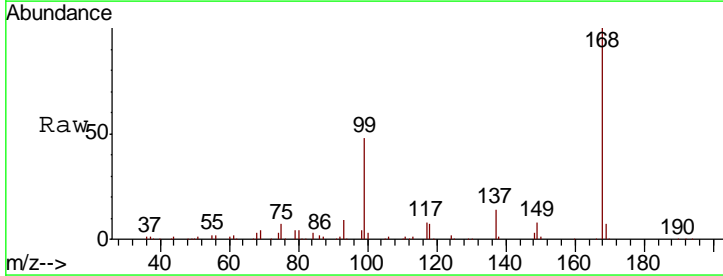
Instrument :
 MSVOA_D
 ClientSampled :

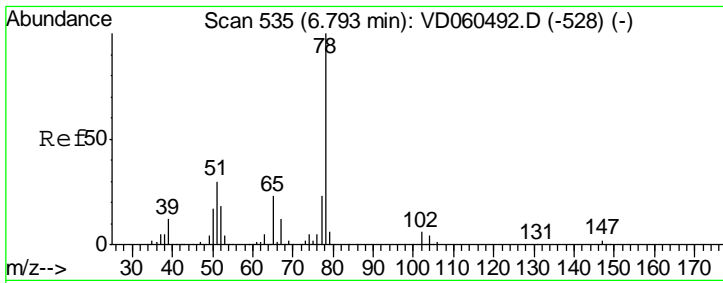
Tgt Ion	Resp	Lower	Upper
43	100		
72	0.0	14.6	21.8#



#31
 Cyclohexane
 Concen: Below Cal
 RT: 6.39 min Scan# 495
 Delta R.T. 0.02 min
 Lab File: VD060568.D
 Acq: 14 Dec 2018 12:40

Tgt Ion	Resp	Lower	Upper
56	100		
69	235.2	22.8	34.2#
84	196.5	65.1	97.7#

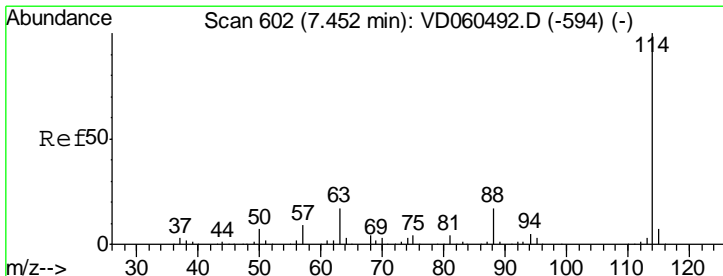
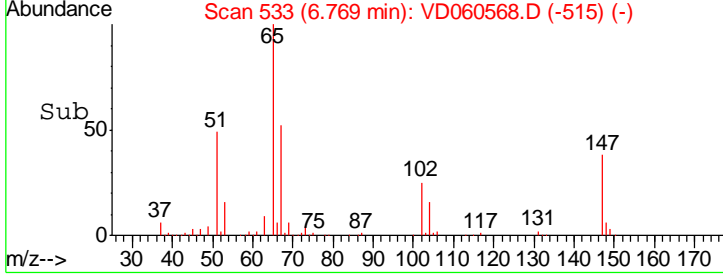
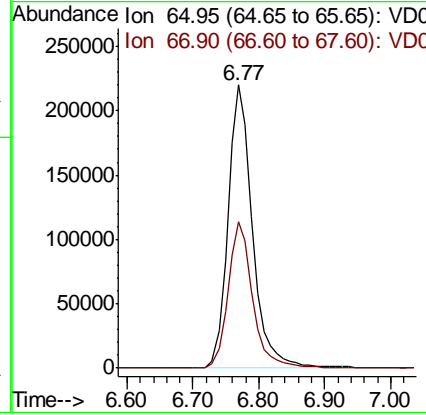
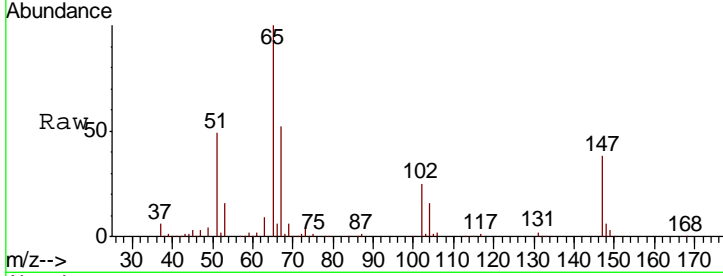




#33
 1,2-Dichloroethane-d4
 Concen: N.D. ug/l
 RT: 6.77 min Scan# 533
 Delta R.T. -0.02 min
 Lab File: VD060568.D
 Acq: 14 Dec 2018 12:40

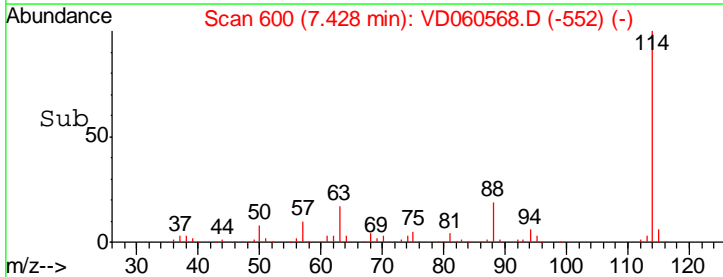
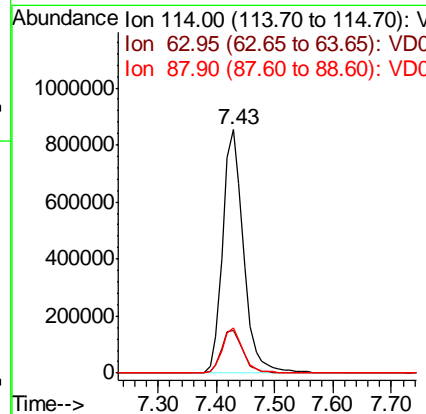
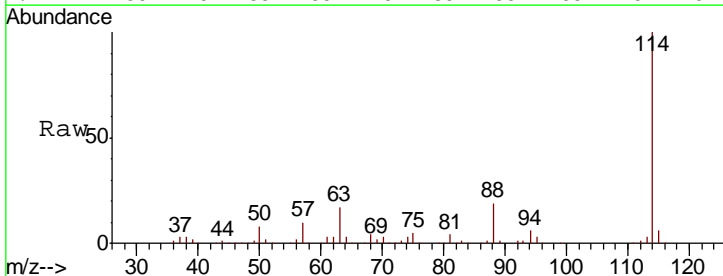
Instrument :
 MSVOA_D
 ClientSampled :

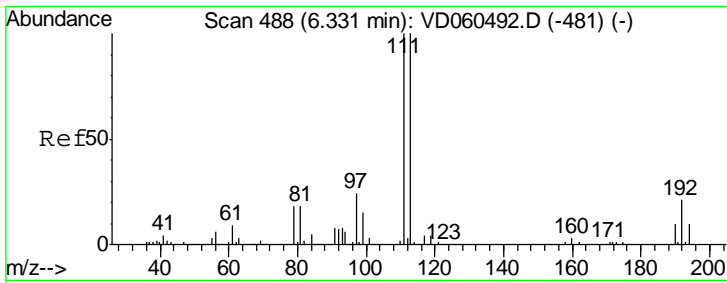
Tgt Ion	Resp	Lower	Upper
65	100		
67	51.8	0.0	106.8



#34
 1,4-Difluorobenzene
 Concen: 50.000 ug/l
 RT: 7.43 min Scan# 600
 Delta R.T. -0.02 min
 Lab File: VD060568.D
 Acq: 14 Dec 2018 12:40

Tgt Ion	Resp	Lower	Upper
114	100		
63	17.4	0.0	34.2
88	18.8	0.0	35.0

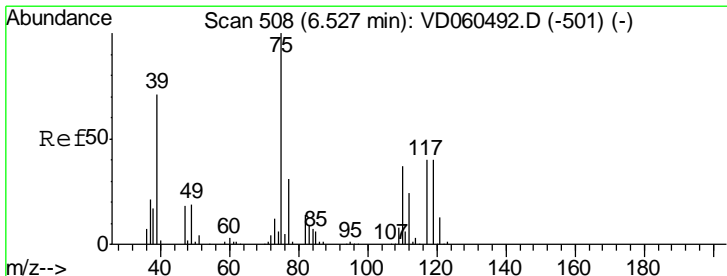
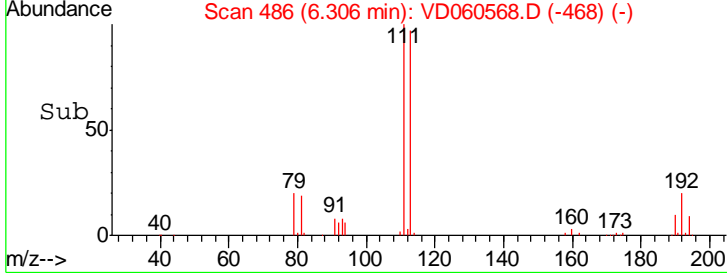
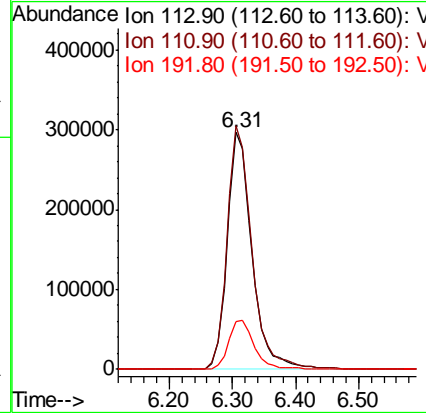
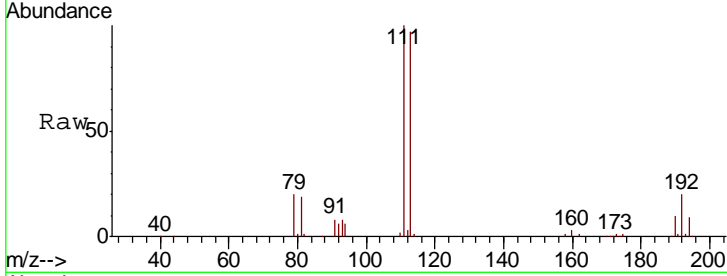




#35
 Dibromofluoromethane
 Concen: 50.000 ug/l
 RT: 6.31 min Scan# 486
 Delta R.T. -0.02 min
 Lab File: VD060568.D
 Acq: 14 Dec 2018 12:40

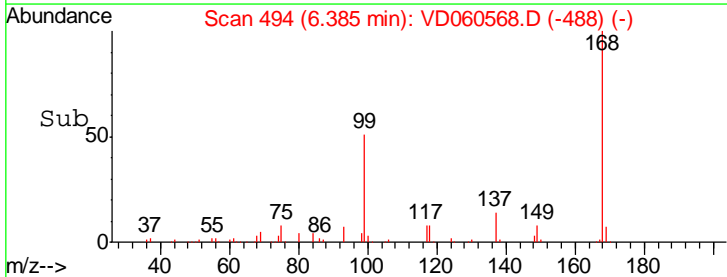
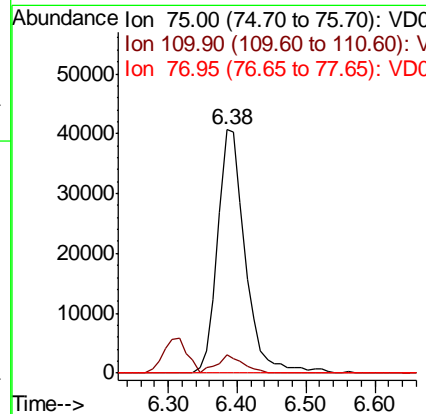
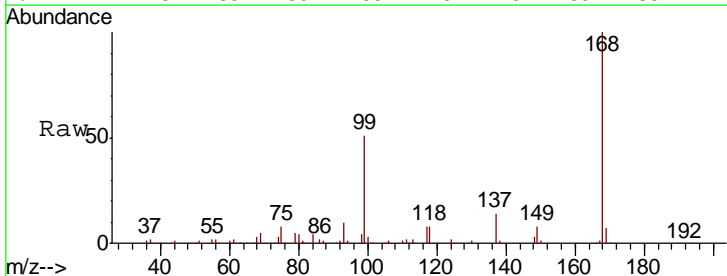
Instrument :
 MSVOA_D
 ClientSampled :

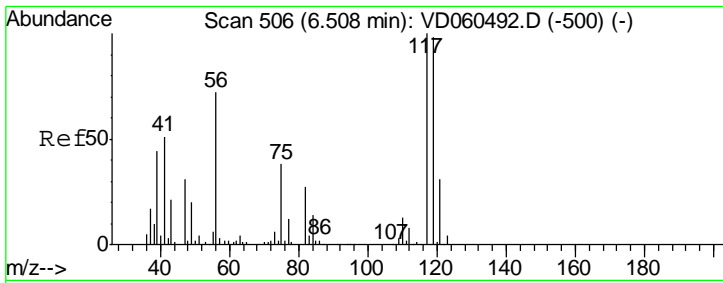
Tgt Ion	Resp	Lower	Upper
113	100		
111	102.8	80.2	120.4
192	20.3	16.6	24.8



#36
 1,1-Dichloropropene
 Concen: 5.475 ug/l
 RT: 6.38 min Scan# 494
 Delta R.T. -0.14 min
 Lab File: VD060568.D
 Acq: 14 Dec 2018 12:40

Tgt Ion	Resp	Lower	Upper
75	100		
110	7.5	18.3	54.8#
77	0.0	24.6	37.0#

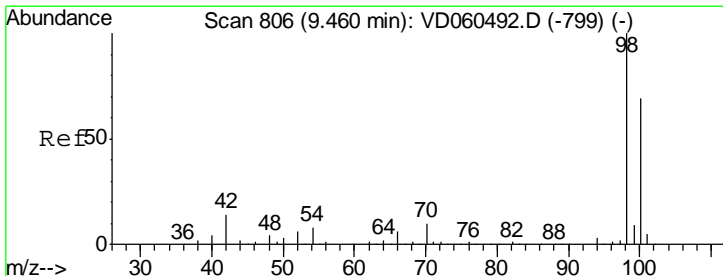
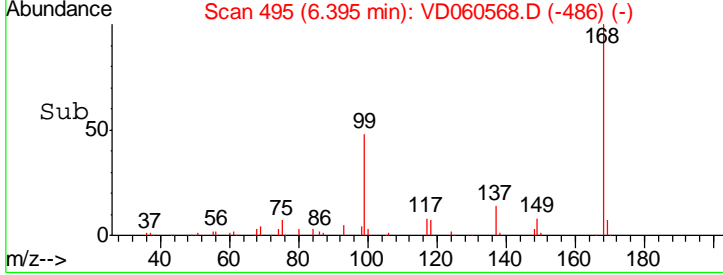
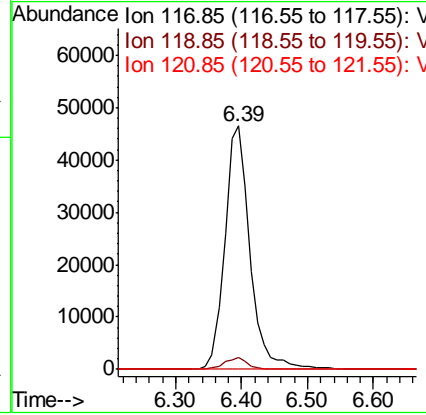
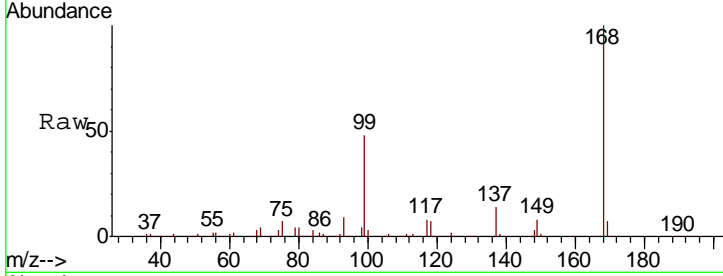




#38
 Carbon Tetrachloride
 Concen: 6.648 ug/l
 RT: 6.39 min Scan# 495
 Delta R.T. -0.11 min
 Lab File: VD060568.D
 Acq: 14 Dec 2018 12:40

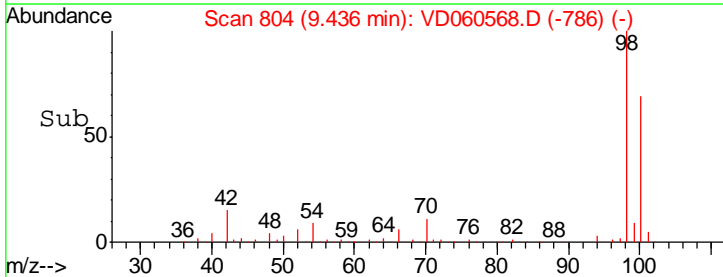
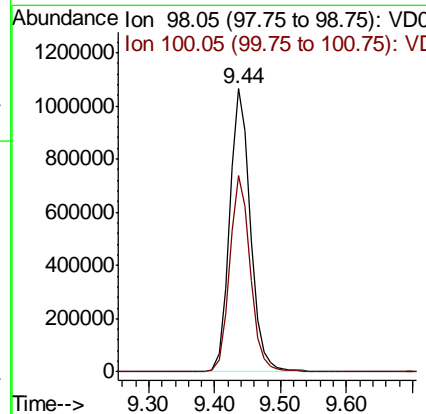
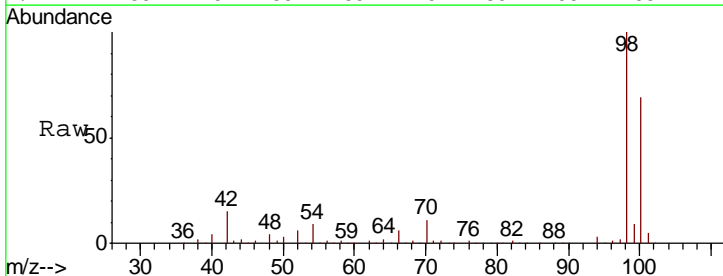
Instrument :
 MSVOA_D
 ClientSampled :

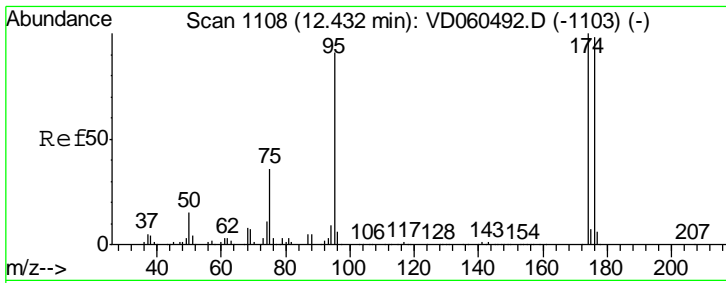
Tgt Ion	Resp	Lower	Upper
117	100		
119	4.8	76.8	115.2#
121	0.0	24.4	36.6#



#50
 Toluene-d8
 Concen: N.D. ug/l
 RT: 9.44 min Scan# 804
 Delta R.T. -0.02 min
 Lab File: VD060568.D
 Acq: 14 Dec 2018 12:40

Tgt Ion	Resp	Lower	Upper
98	100		
100	69.2	55.7	83.5

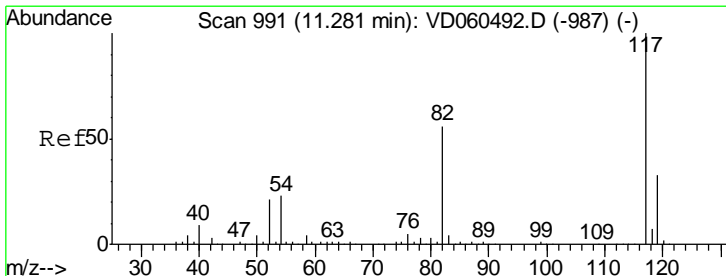
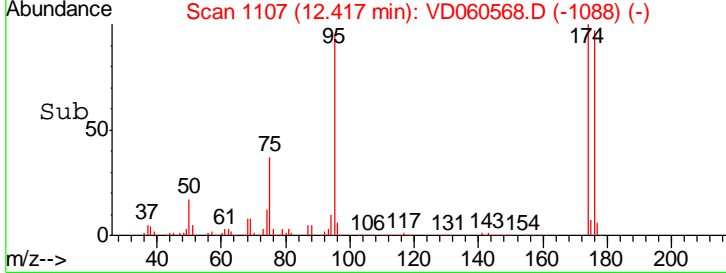
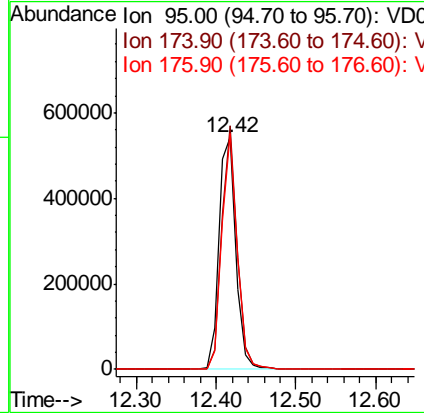
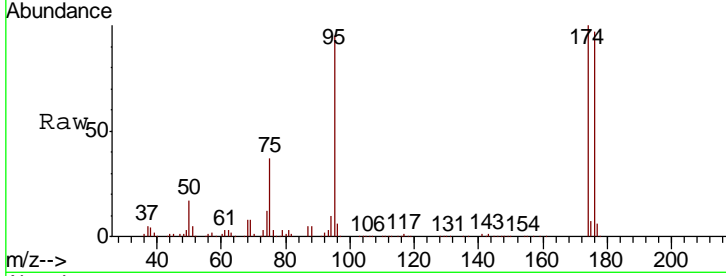




#62
 4-Bromofluorobenzene
 Concen: Below ug/l
 RT: 12.42 min Scan# 1107
 Delta R.T. -0.01 min
 Lab File: VD060568.D
 Acq: 14 Dec 2018 12:40

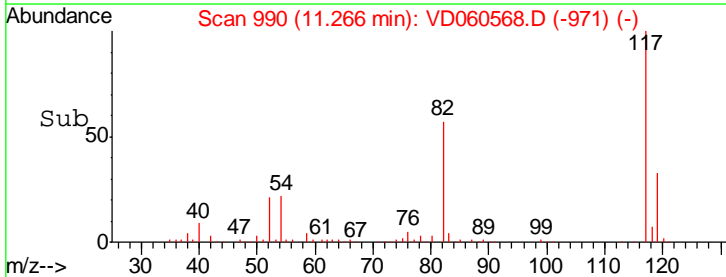
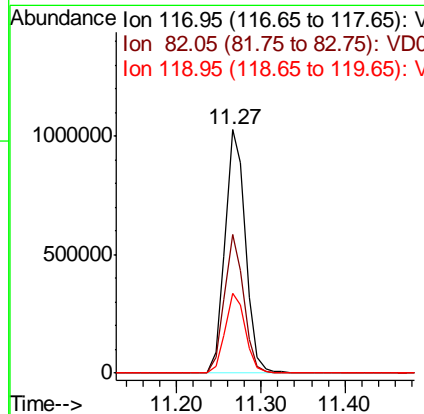
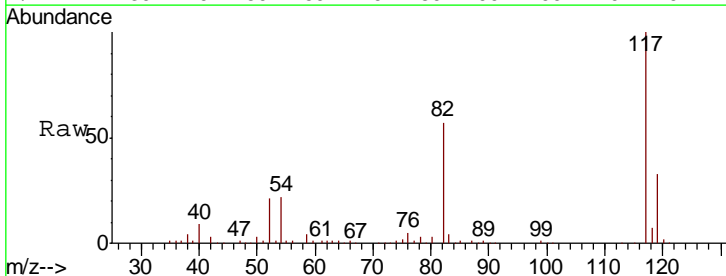
Instrument :
 MSVOA_D
 ClientSampled :

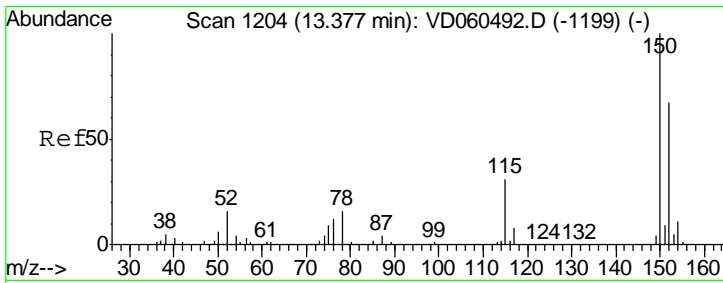
Tgt Ion	Resp	Lower	Upper
95	100		
174	105.1	0.0	219.4
176	101.8	0.0	214.6



#63
 Chlorobenzene-d5
 Concen: 50.000 ug/l
 RT: 11.27 min Scan# 990
 Delta R.T. -0.01 min
 Lab File: VD060568.D
 Acq: 14 Dec 2018 12:40

Tgt Ion	Resp	Lower	Upper
117	100		
82	56.8	45.2	67.8
119	32.9	26.1	39.1



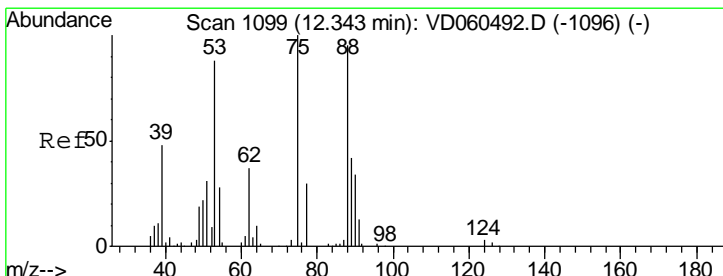
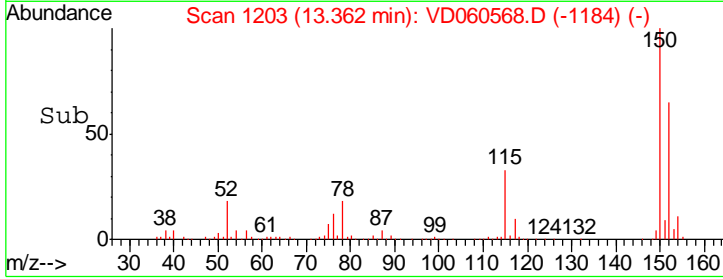
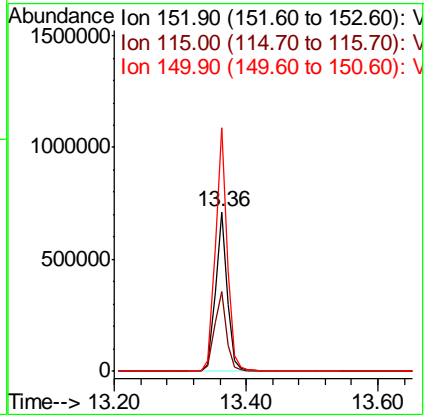
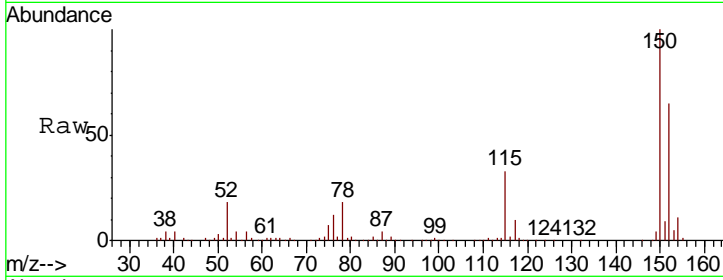


#72
 1,4-Dichlorobenzene-d4
 Concen: 50.000 ug/l
 RT: 13.36 min Scan# 1203
 Delta R.T. -0.01 min
 Lab File: VD060568.D
 Acq: 14 Dec 2018 12:40

Instrument : MSVOA_D
 ClientSampled :

Tgt Ion:152 Resp: 871800

Ion	Ratio	Lower	Upper
152	100		
115	50.4	24.6	74.0
150	152.7	0.0	309.0



#81
 trans-1,4-Dichloro-2-butene
 Concen: 118.281 ug/l
 RT: 12.42 min Scan# 1107
 Delta R.T. 0.07 min
 Lab File: VD060568.D
 Acq: 14 Dec 2018 12:40

Tgt Ion: 75 Resp: 325866

Ion	Ratio	Lower	Upper
75	100		
53	0.0	70.5	105.7#
89	0.0	33.6	50.4#

