

Data Path : Z:\VOASRV\HPCHEM1\MSVOA_D\DATA\VD122718\
 Data File : VD060739.D
 Acq On : 27 Dec 2018 21:10
 Operator : VA/AP
 Sample : J6447-08RE
 Misc : 5.82g/5ml/MSVOA_D/SOIL
 ALS Vial : 22 Sample Multiplier: 1

Instrument :
 MSVOA_D
 ClientSampleId :
 P001-SS025-1218-01RE

Quant Time: Dec 28 01:39:43 2018
 Quant Method : Z:\VOASRV\HPCHEM1\MSVOA_D\METHOD\82D122018S.M
 Quant Title : SW846 8260
 QLast Update : Fri Dec 21 17:37:47 2018
 Response via : Initial Calibration

Internal Standards	R.T.	QIon	Response	Conc	Units	Dev(Min)
1) Pentafluorobenzene	6.37	168	101564	50.00	ug/l	-0.04
34) 1,4-Difluorobenzene	7.40	114	189638	50.00	ug/l	-0.04
63) Chlorobenzene-d5	11.26	117	167950	50.00	ug/l	-0.02
72) 1,4-Dichlorobenzene-d4	13.36	152	73367	50.00	ug/l	-0.02

System Monitoring Compounds

33) 1,2-Dichloroethane-d4	6.75	65	121067	172.49	ug/l	-0.04
Spiked Amount				50.000		
				Recovery	=	344.98%
35) Dibromofluoromethane	6.29	113	105298	75.86	ug/l	-0.04
Spiked Amount				50.000		
				Recovery	=	151.72%
50) Toluene-d8	9.42	98	180511	43.59	ug/l	-0.04
Spiked Amount				50.000		
				Recovery	=	87.18%
62) 4-Bromofluorobenzene	12.40	95	61034	42.08	ug/l	-0.02
Spiked Amount				50.000		
				Recovery	=	84.16%

Target Compounds

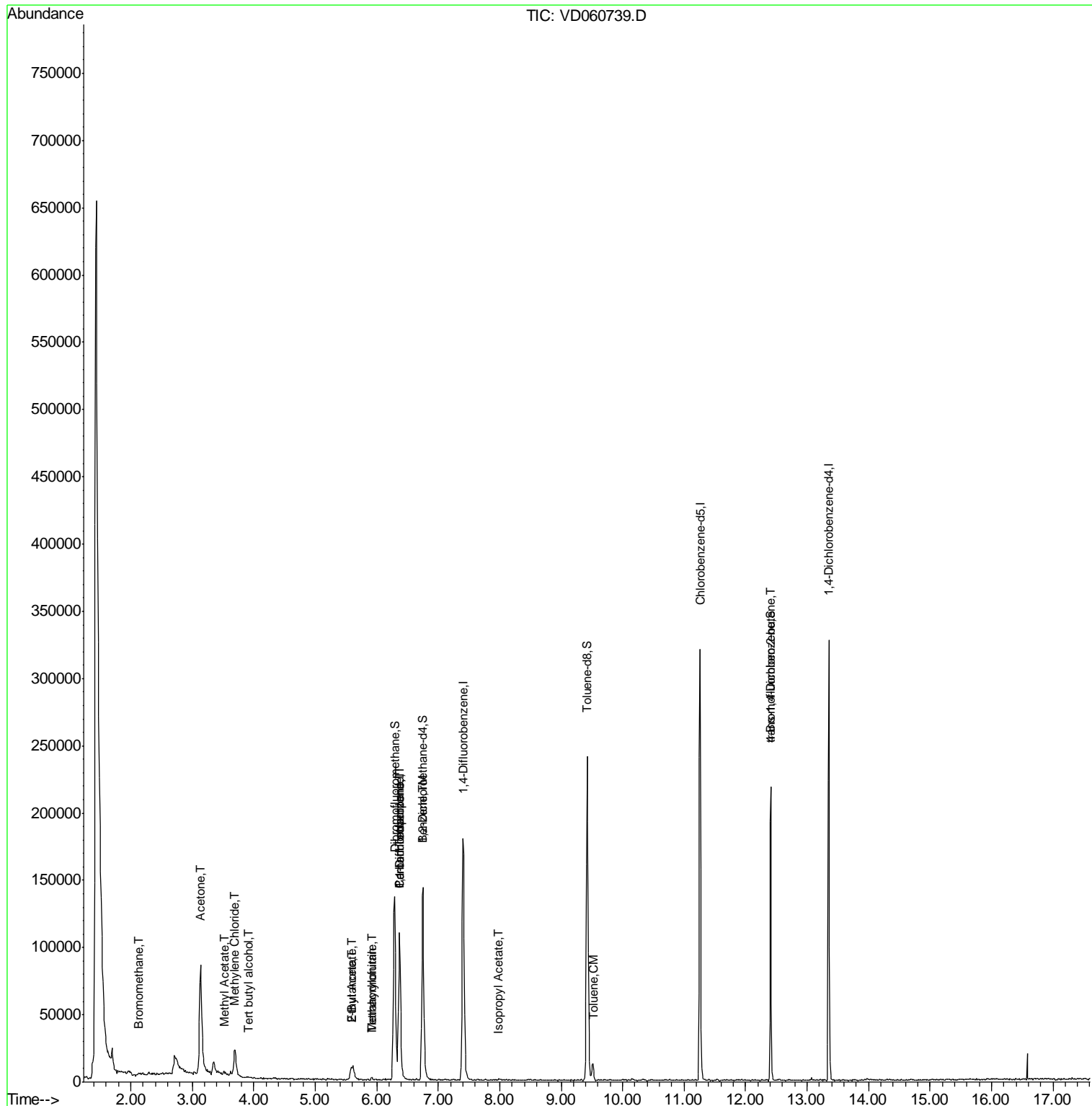
						Qvalue
5) Bromomethane	2.14	94	452	2.128	ug/l #	2
11) Tert butyl alcohol	3.91	59	184	6.273	ug/l #	74
16) Acetone	3.13	43	167512	1366.626	ug/l	99
18) Methyl Acetate	3.53	43	4301	14.158	ug/l #	63
20) Methylene Chloride	3.69	84	11972	9.405	ug/l	90
25) 2-Butanone	5.58	43	15525	66.190	ug/l	97
29) Tetrahydrofuran	5.91	42	1045	7.859	ug/l #	40
36) 1,1-Dichloropropene	6.37	75	6843	3.504	ug/l #	40
37) Ethyl Acetate	5.58	43	15525	19.010	ug/l #	69
38) Carbon Tetrachloride	6.37	117	7604	4.414	ug/l #	12
40) Benzene	6.75	78	5250	1.041	ug/l #	78
41) Methacrylonitrile	5.92	41	864	1.913	ug/l #	36
43) Isopropyl Acetate	7.98	43	1451	1.384	ug/l #	48
52) Toluene	9.52	92	6782	2.145	ug/l	94
81) trans-1,4-Dichloro-2-buten	12.40	75	26219	113.598	ug/l #	13

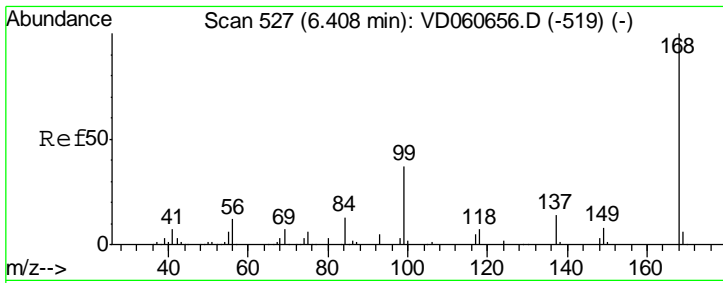
(#) = qualifier out of range (m) = manual integration (+) = signals summed

Data Path : Z:\VOASRV\HPCHEM1\MSVOA_D\DATA\VD122718\
 Data File : VD060739.D
 Acq On : 27 Dec 2018 21:10
 Operator : VA/AP
 Sample : J6447-08RE
 Misc : 5.82g/5ml/MSVOA_D/SOIL
 ALS Vial : 22 Sample Multiplier: 1

Instrument :
 MSVOA_D
 ClientSampleId :
 P001-SS025-1218-01RE

Quant Time: Dec 28 01:39:43 2018
 Quant Method : Z:\VOASRV\HPCHEM1\MSVOA_D\METHOD\82D122018S.M
 Quant Title : SW846 8260
 QLast Update : Fri Dec 21 17:37:47 2018
 Response via : Initial Calibration

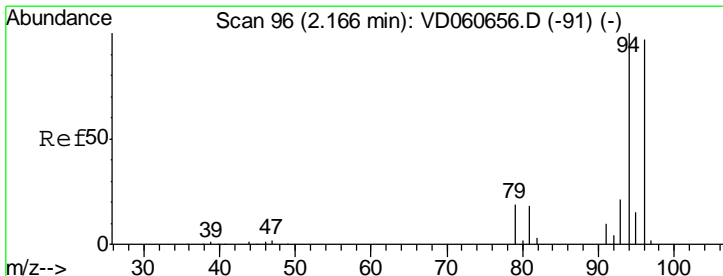
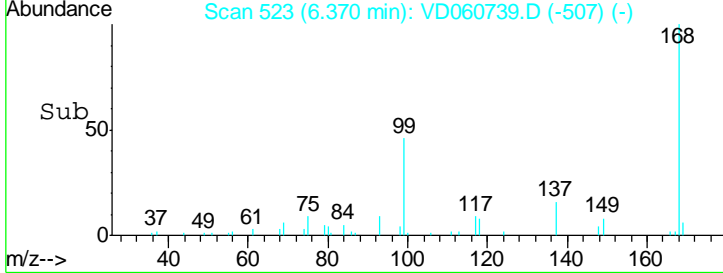
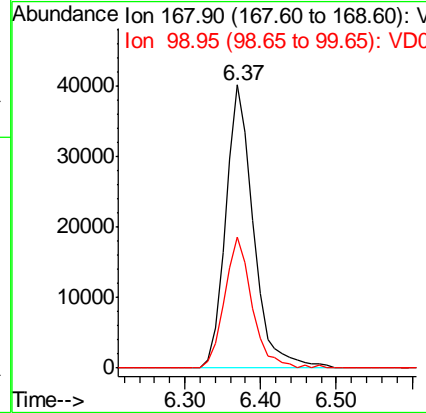
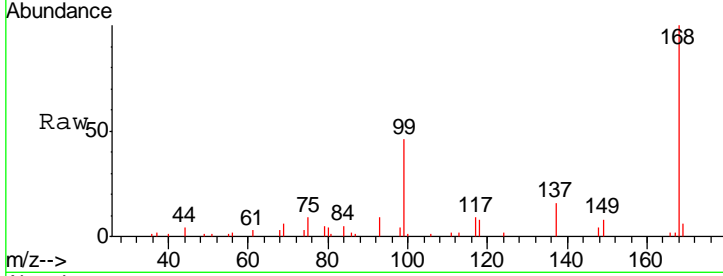




#1
 Pentafluorobenzene
 Concen: 50.000 ug/l
 RT: 6.37 min Scan# 523
 Delta R.T. -0.04 min
 Lab File: VD060739.D
 Acq: 27 Dec 2018 21:10

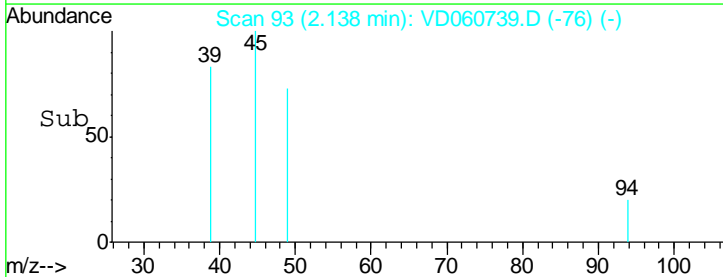
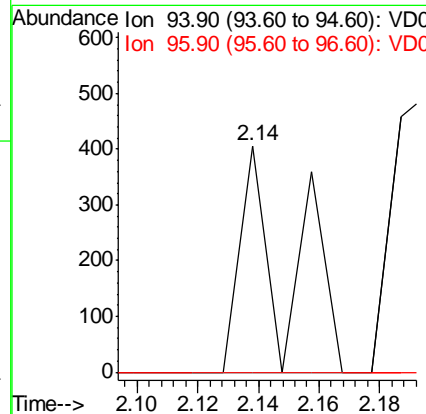
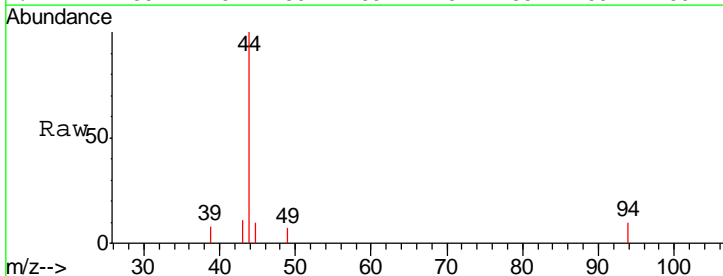
Instrument : MSVOA_D
 ClientSampleId : P001-SS025-1218-01RE

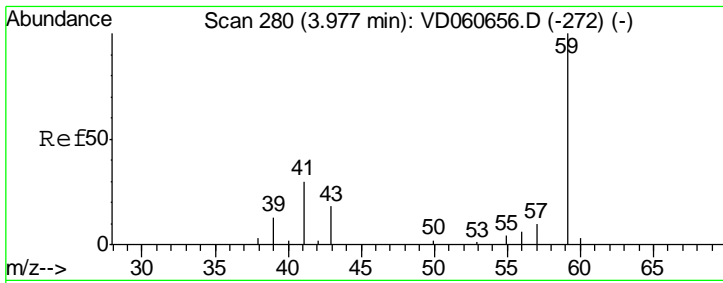
Tgt Ion: 168 Resp: 101564
 Ion Ratio Lower Upper
 168 100
 99 46.3 38.7 58.1



#5
 Bromomethane
 Concen: 2.128 ug/l
 RT: 2.14 min Scan# 93
 Delta R.T. -0.03 min
 Lab File: VD060739.D
 Acq: 27 Dec 2018 21:10

Tgt Ion: 94 Resp: 452
 Ion Ratio Lower Upper
 94 100
 96 0.0 77.2 115.8#

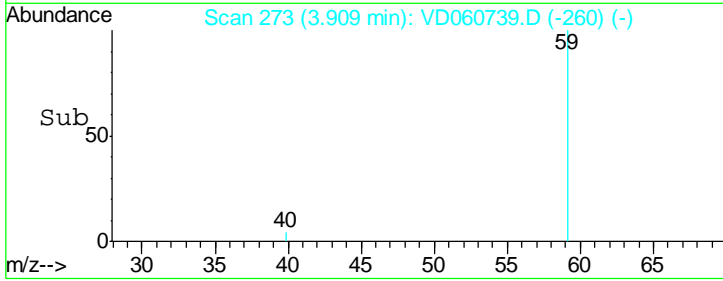
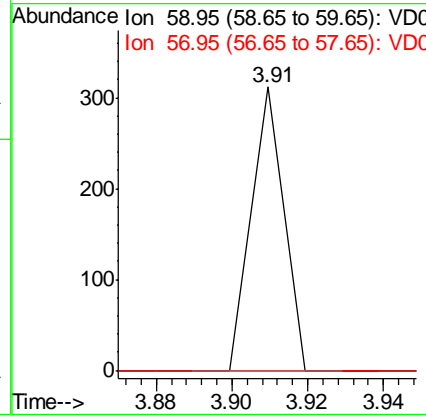
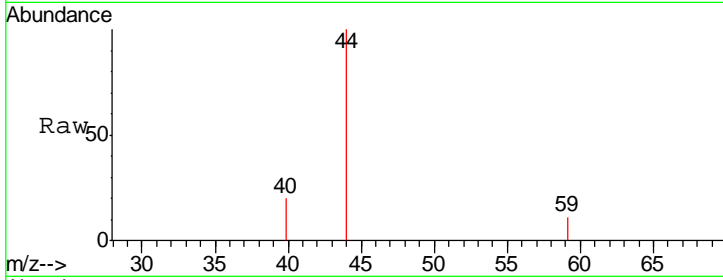




#11
 Tert butyl alcohol
 Concen: 6.273 ug/l
 RT: 3.91 min Scan# 273
 Delta R.T. -0.07 min
 Lab File: VD060739.D
 Acq: 27 Dec 2018 21:10

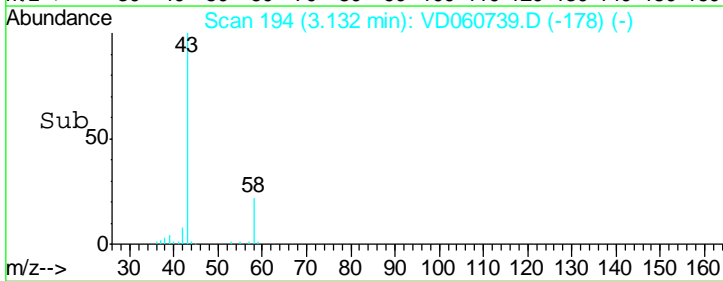
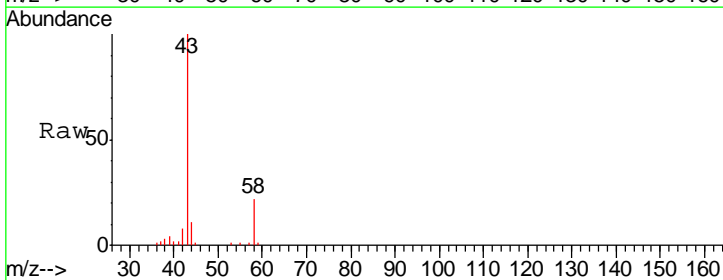
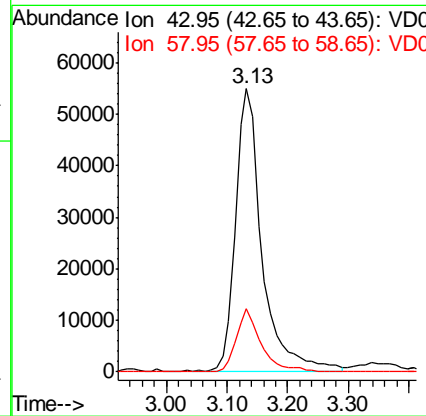
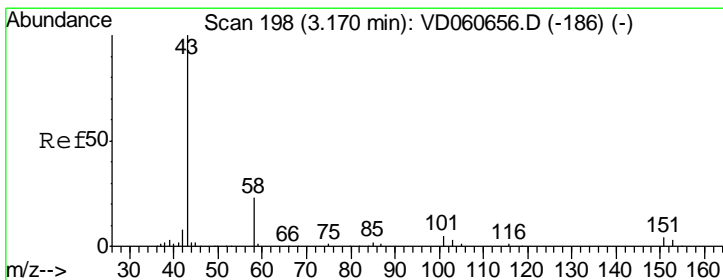
Instrument :
 MSVOA_D
ClientSampled :
 P001-SS025-1218-01RE

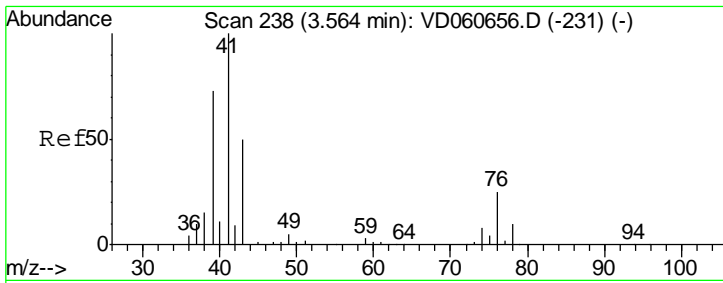
Tgt Ion: 59 Resp: 184
 Ion Ratio Lower Upper
 59 100
 57 0.0 7.8 11.6#



#16
 Acetone
 Concen: 1366.626 ug/l
 RT: 3.13 min Scan# 194
 Delta R.T. -0.04 min
 Lab File: VD060739.D
 Acq: 27 Dec 2018 21:10

Tgt Ion: 43 Resp: 167512
 Ion Ratio Lower Upper
 43 100
 58 22.4 18.2 27.2

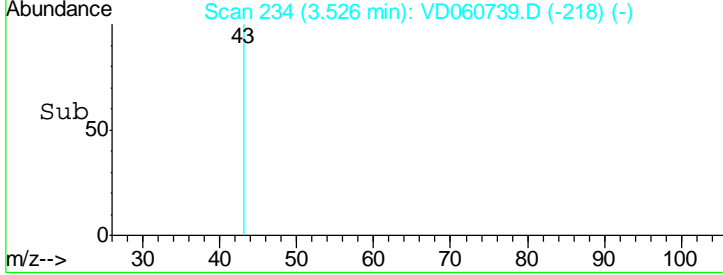
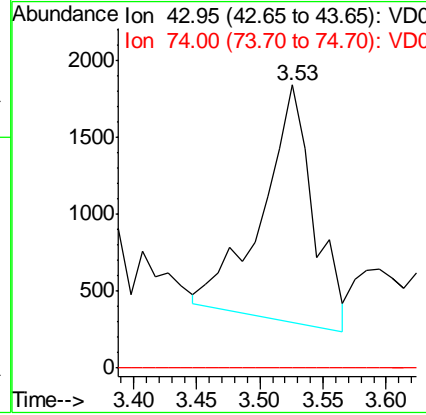
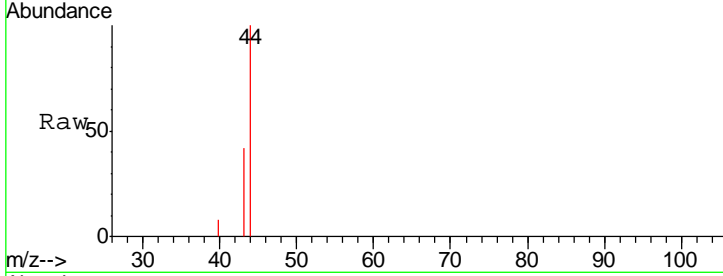




#18
 Methyl Acetate
 Concen: 14.158 ug/l
 RT: 3.53 min Scan# 234
 Delta R.T. -0.04 min
 Lab File: VD060739.D
 Acq: 27 Dec 2018 21:10

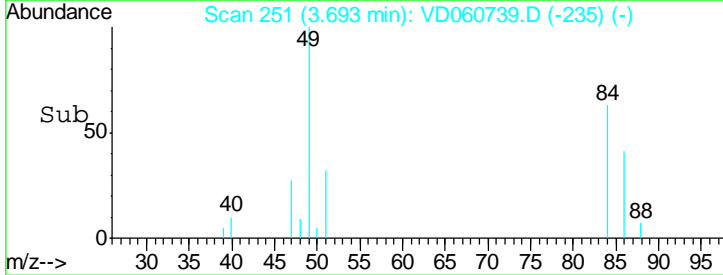
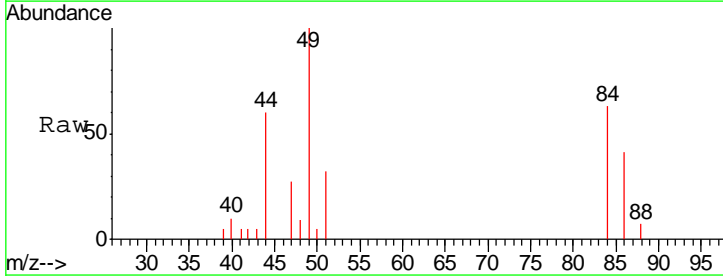
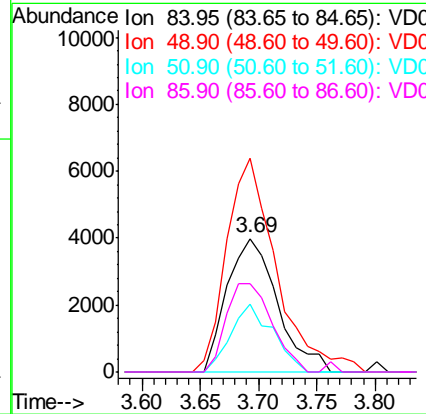
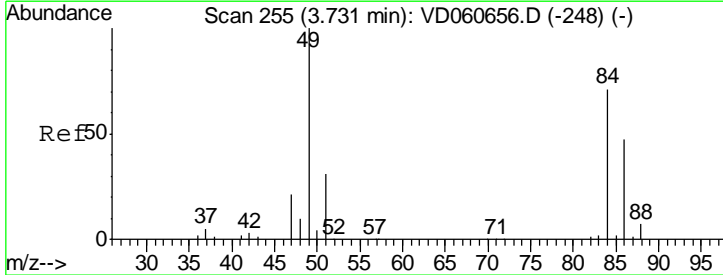
Instrument :
 MSVOA_D
 ClientSampleId :
 P001-SS025-1218-01RE

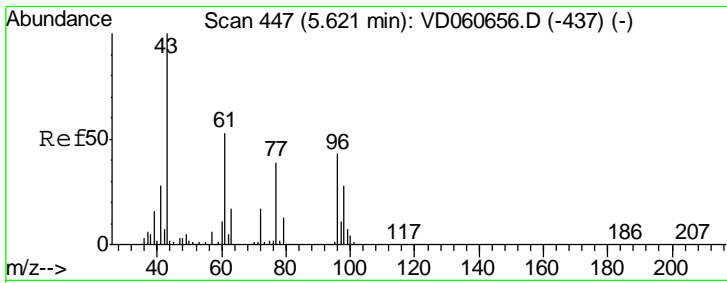
Tgt Ion: 43 Resp: 4301
 Ion Ratio Lower Upper
 43 100
 74 0.0 12.4 18.6#



#20
 Methylene Chloride
 Concen: 9.405 ug/l
 RT: 3.69 min Scan# 251
 Delta R.T. -0.04 min
 Lab File: VD060739.D
 Acq: 27 Dec 2018 21:10

Tgt Ion: 84 Resp: 11972
 Ion Ratio Lower Upper
 84 100
 49 159.7 113.6 170.4
 51 51.1 34.7 52.1
 86 65.6 52.8 79.2

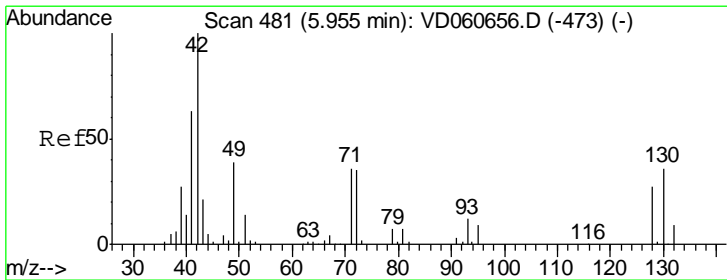
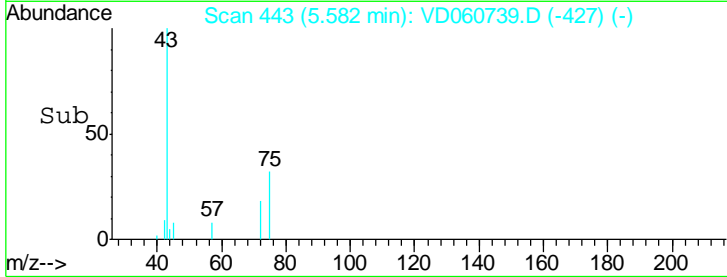
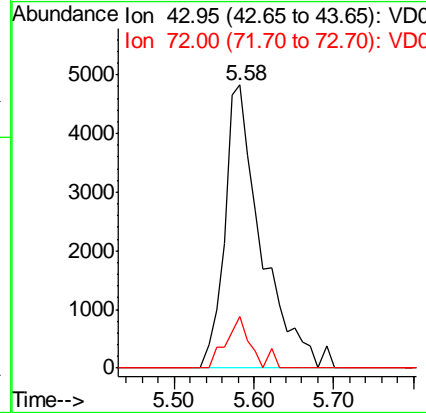
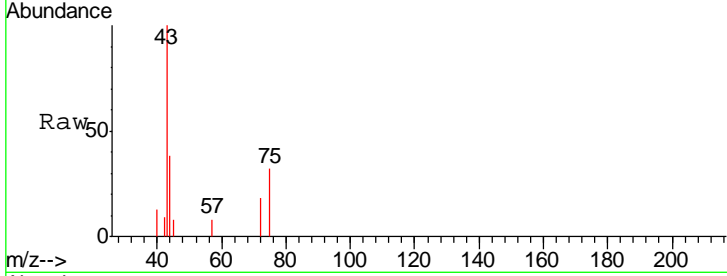




#25
 2-Butanone
 Concen: 66.190 ug/l
 RT: 5.58 min Scan# 443
 Delta R.T. -0.04 min
 Lab File: VD060739.D
 Acq: 27 Dec 2018 21:10

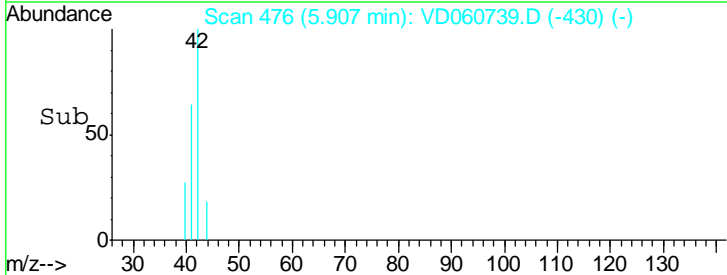
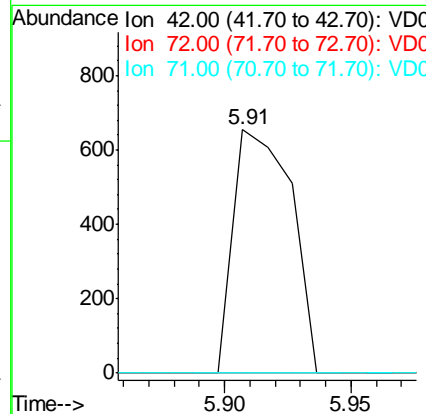
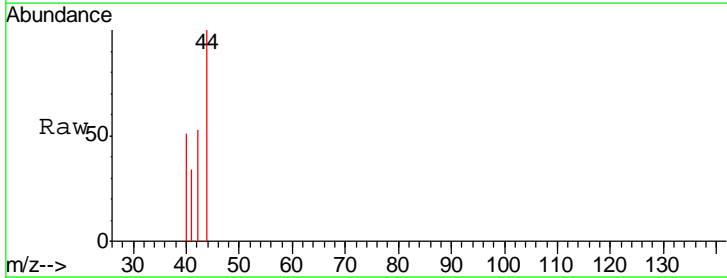
Instrument : MSVOA_D
 ClientSampled : P001-SS025-1218-01RE

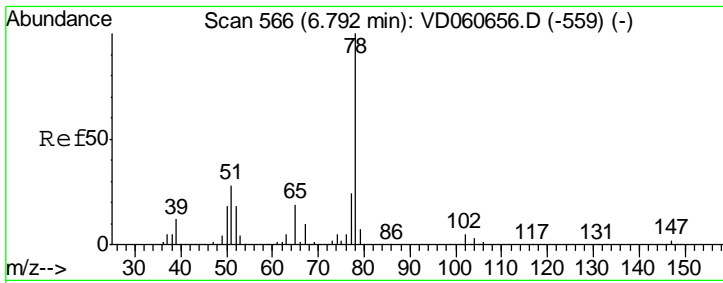
Tgt Ion: 43 Resp: 15525
 Ion Ratio Lower Upper
 43 100
 72 18.2 13.7 20.5



#29
 Tetrahydrofuran
 Concen: 7.859 ug/l
 RT: 5.91 min Scan# 476
 Delta R.T. -0.05 min
 Lab File: VD060739.D
 Acq: 27 Dec 2018 21:10

Tgt Ion: 42 Resp: 1045
 Ion Ratio Lower Upper
 42 100
 72 0.0 28.0 42.0#
 71 0.0 27.0 40.6#

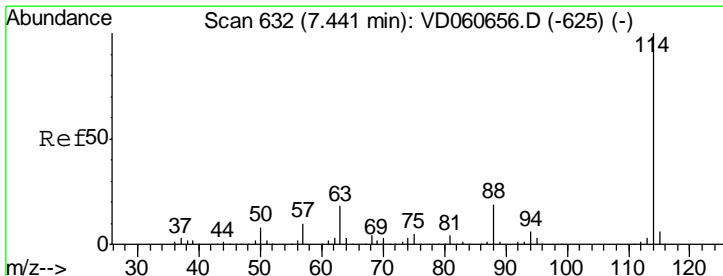
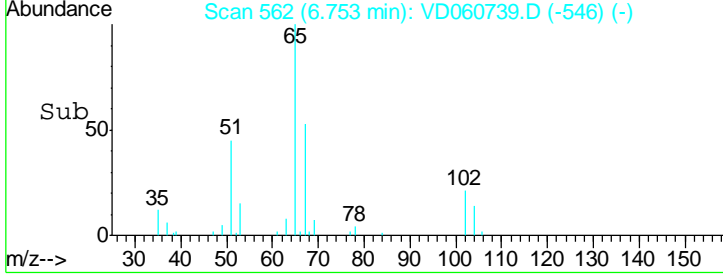
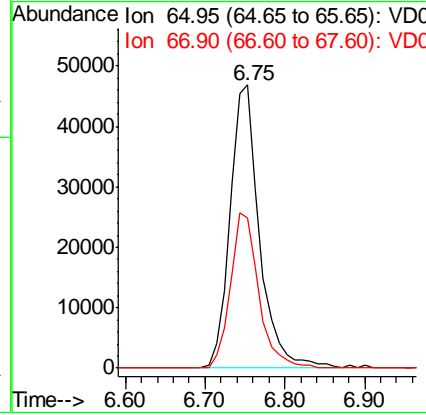
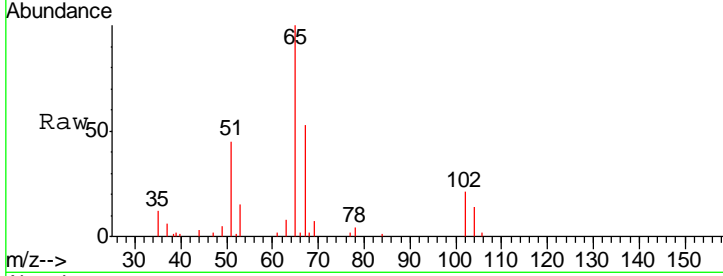




#33
 1,2-Dichloroethane-d4
 Concen: N.D. ug/l
 RT: 6.75 min Scan# 562
 Delta R.T. -0.04 min
 Lab File: VD060739.D
 Acq: 27 Dec 2018 21:10

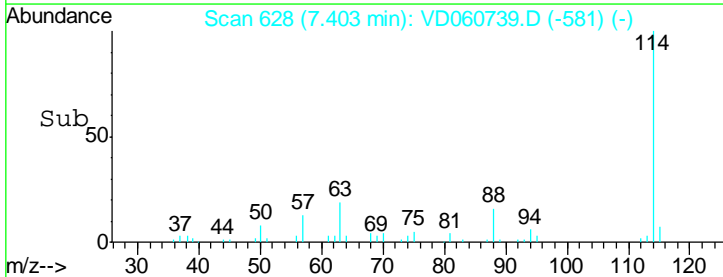
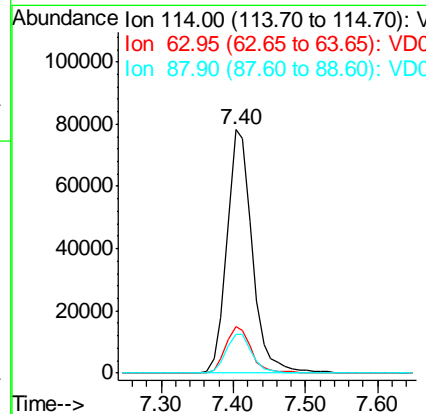
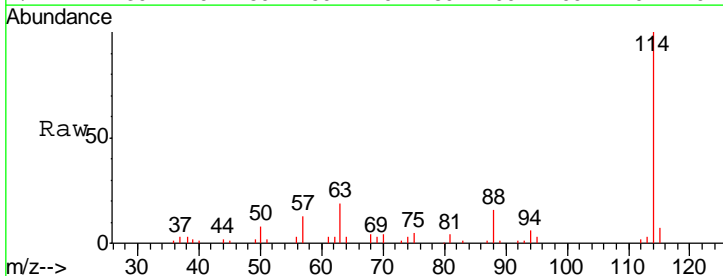
Instrument :
 MSVOA_D
ClientSampled :
 P001-SS025-1218-01RE

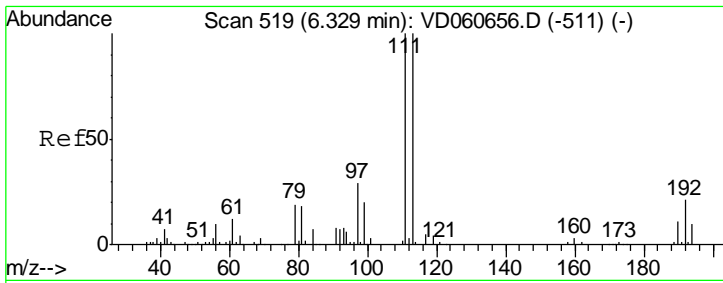
Tgt Ion: 65 Resp: 121067
 Ion Ratio Lower Upper
 65 100
 67 53.0 0.0 105.4



#34
 1,4-Difluorobenzene
 Concen: 50.000 ug/l
 RT: 7.40 min Scan# 628
 Delta R.T. -0.04 min
 Lab File: VD060739.D
 Acq: 27 Dec 2018 21:10

Tgt Ion: 114 Resp: 189638
 Ion Ratio Lower Upper
 114 100
 63 19.1 0.0 36.2
 88 16.0 0.0 37.0

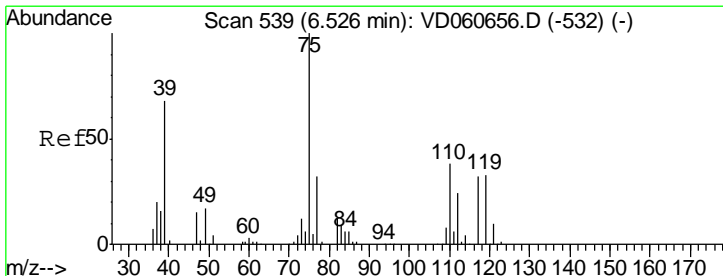
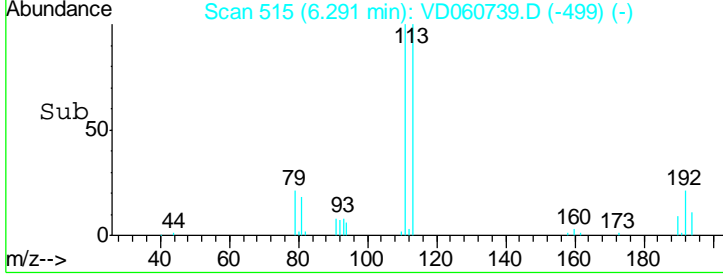
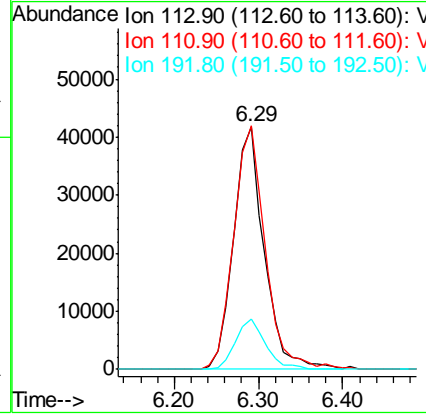
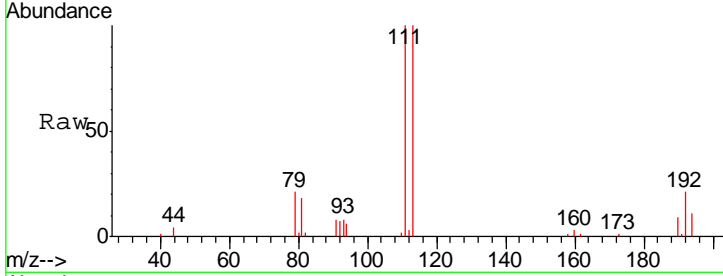




#35
 Dibromofluoromethane
 Concen: 50.000 ug/l
 RT: 6.29 min Scan# 515
 Delta R.T. -0.04 min
 Lab File: VD060739.D
 Acq: 27 Dec 2018 21:10

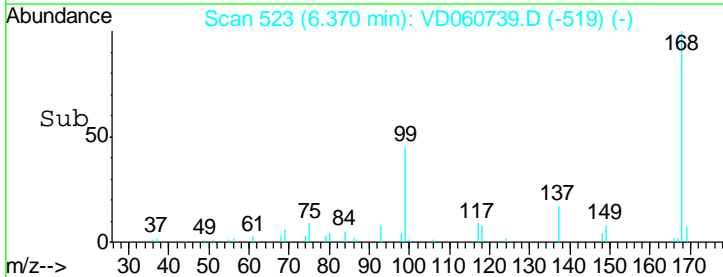
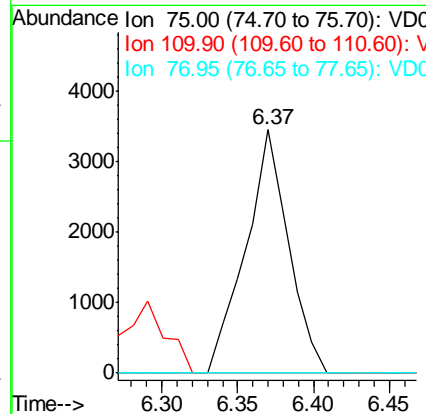
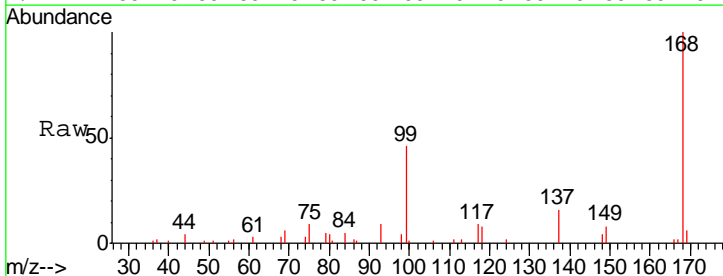
Instrument :
 MSVOA_D
ClientSampled :
 P001-SS025-1218-01RE

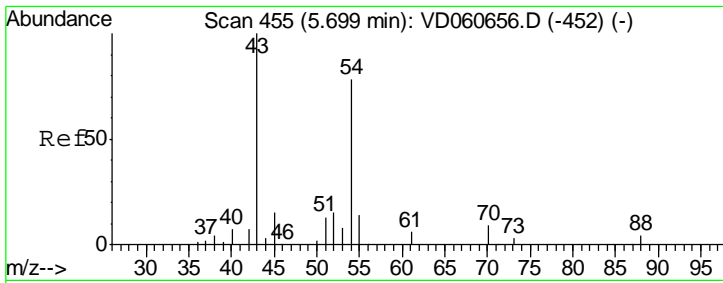
Tgt Ion	Resp	Lower	Upper
113	105298		
113	100		
111	100.4	80.0	120.0
192	20.7	16.6	25.0



#36
 1,1-Dichloropropene
 Concen: 3.504 ug/l
 RT: 6.37 min Scan# 523
 Delta R.T. -0.16 min
 Lab File: VD060739.D
 Acq: 27 Dec 2018 21:10

Tgt Ion	Resp	Lower	Upper
75	6843		
75	100		
110	0.0	18.9	56.7#
77	0.0	25.4	38.0#

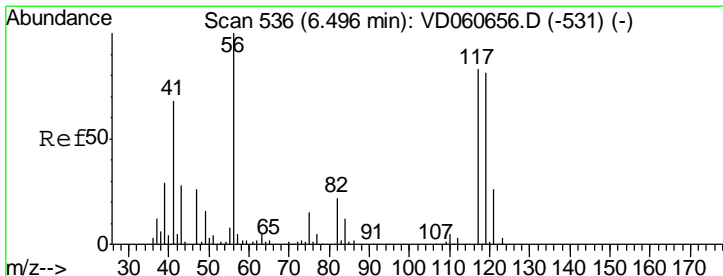
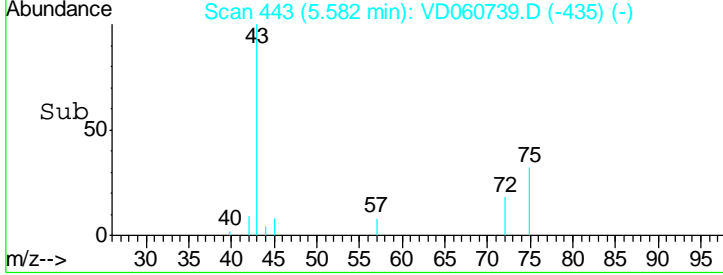
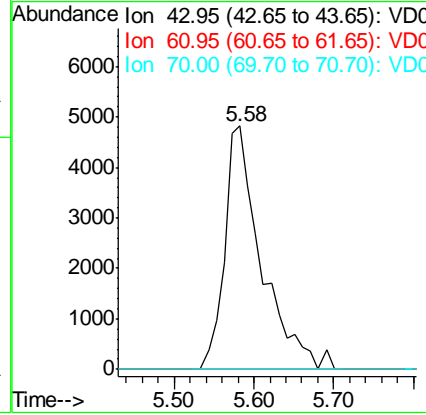
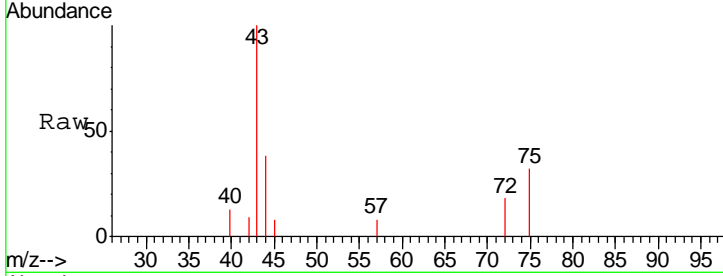




#37
Ethyl Acetate
Concen: 19.010 ug/l
RT: 5.58 min Scan# 443
Delta R.T. -0.12 min
Lab File: VD060739.D
Acq: 27 Dec 2018 21:10

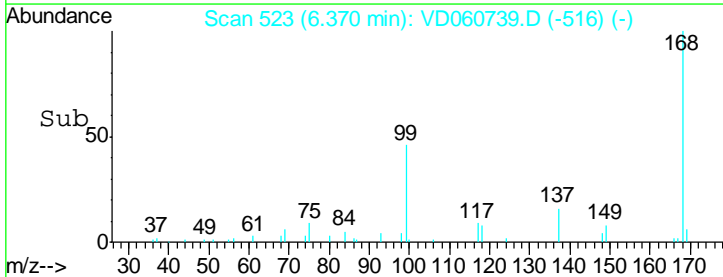
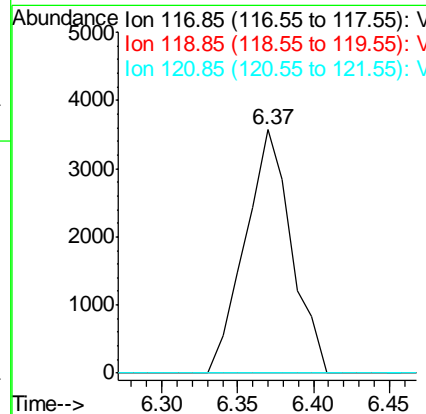
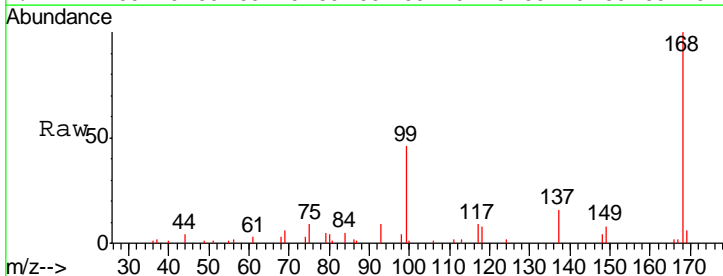
Instrument : MSVOA_D
ClientSampleId : P001-SS025-1218-01RE

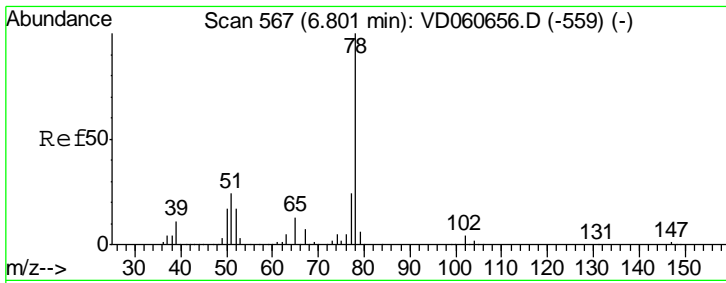
Tgt Ion	Resp	Lower	Upper
43	1525		
61	0.0	11.8	17.6#
70	0.0	5.8	8.6#



#38
Carbon Tetrachloride
Concen: 4.414 ug/l
RT: 6.37 min Scan# 523
Delta R.T. -0.13 min
Lab File: VD060739.D
Acq: 27 Dec 2018 21:10

Tgt Ion	Resp	Lower	Upper
117	7604		
119	0.0	77.0	115.4#
121	0.0	24.7	37.1#

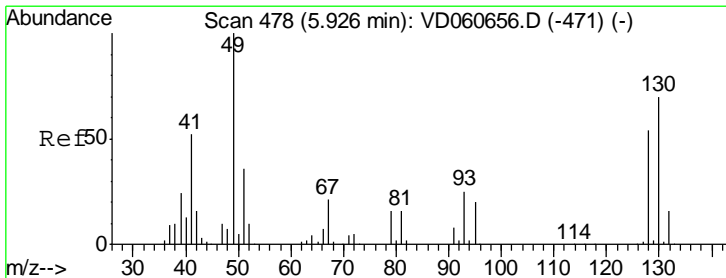
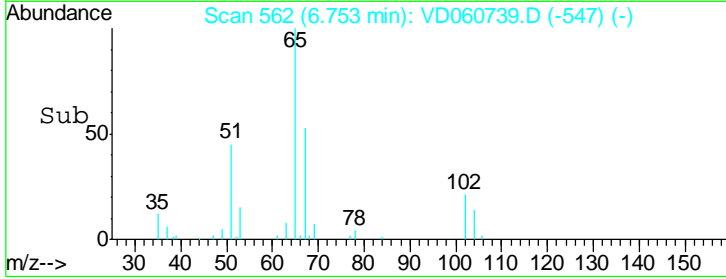
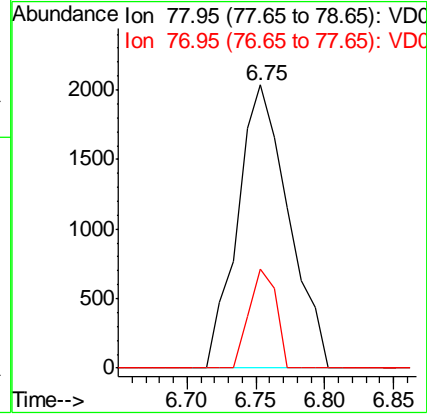
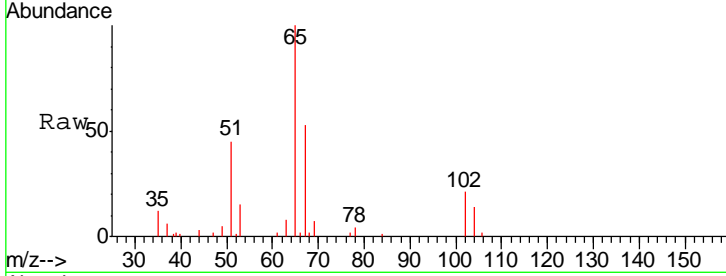




#40
Benzene
Concen: 1.041 ug/l
RT: 6.75 min Scan# 562
Delta R.T. -0.05 min
Lab File: VD060739.D
Acq: 27 Dec 2018 21:10

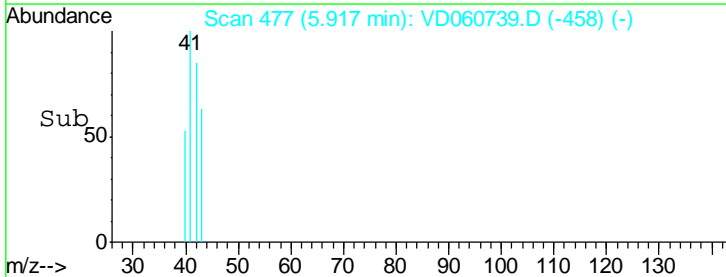
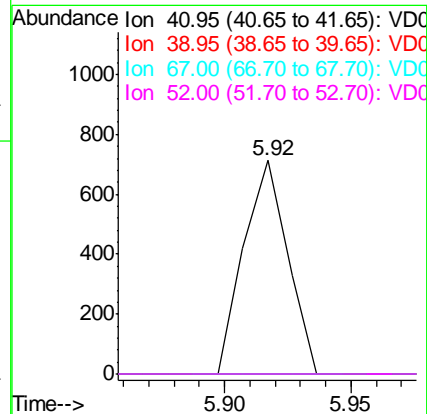
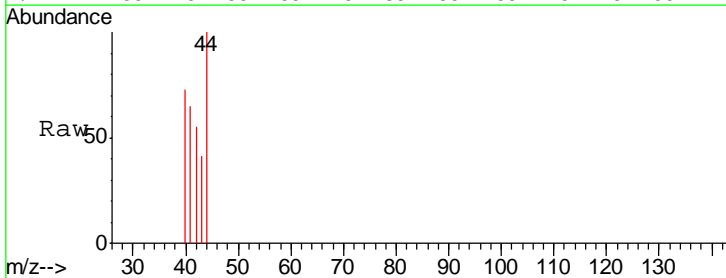
Instrument :
MSVOA_D
ClientSampled :
P001-SS025-1218-01RE

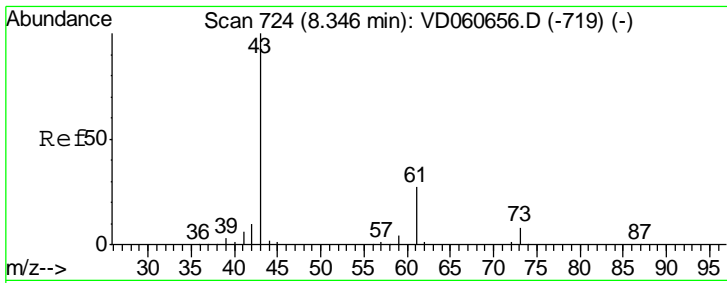
Tgt Ion: 78 Resp: 5250
Ion Ratio Lower Upper
78 100
77 34.9 19.2 28.8#



#41
Methacrylonitrile
Concen: 1.913 ug/l
RT: 5.92 min Scan# 477
Delta R.T. -0.01 min
Lab File: VD060739.D
Acq: 27 Dec 2018 21:10

Tgt Ion: 41 Resp: 864
Ion Ratio Lower Upper
41 100
39 0.0 37.6 56.4#
67 0.0 33.0 49.6#
52 0.0 15.5 23.3#

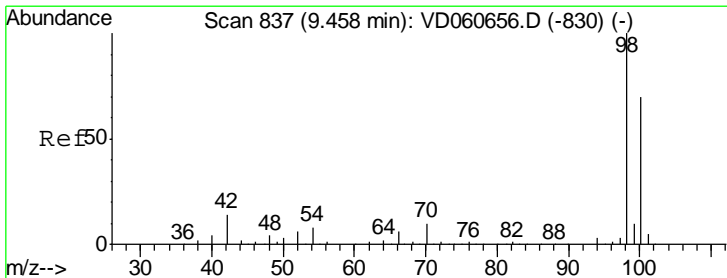
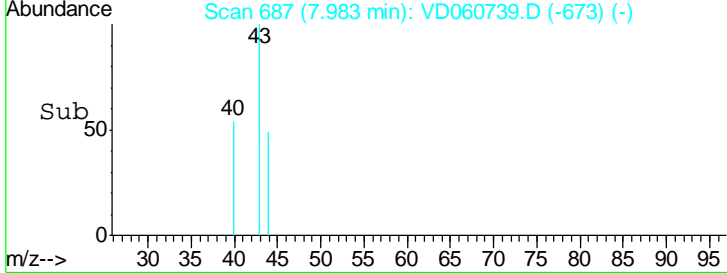
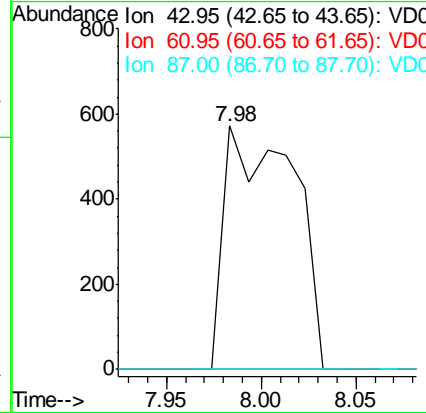
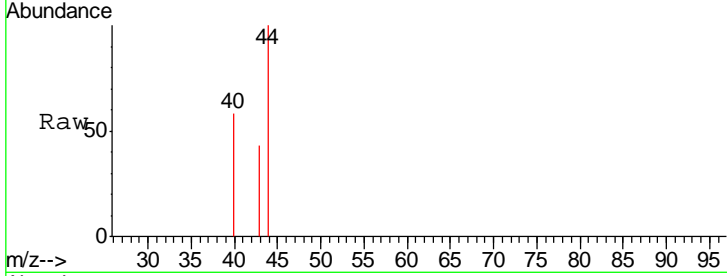




#43
 Isopropyl Acetate
 Concen: 1.384 ug/l
 RT: 7.98 min Scan# 687
 Delta R.T. -0.36 min
 Lab File: VD060739.D
 Acq: 27 Dec 2018 21:10

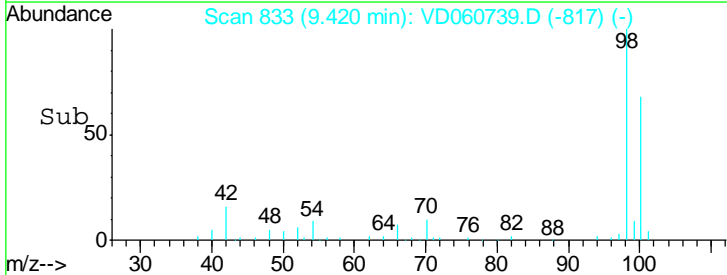
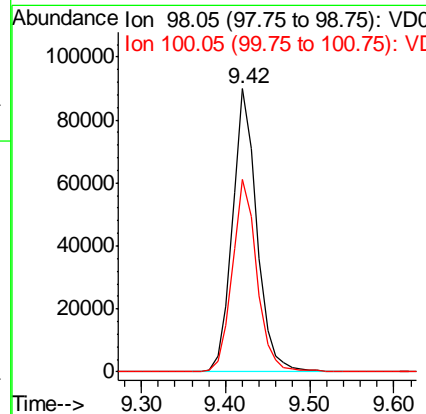
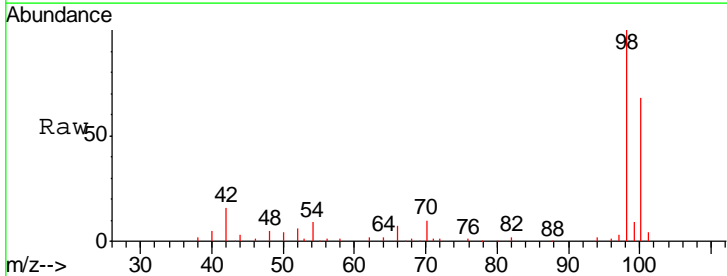
Instrument :
 MSVOA_D
ClientSampled :
 P001-SS025-1218-01RE

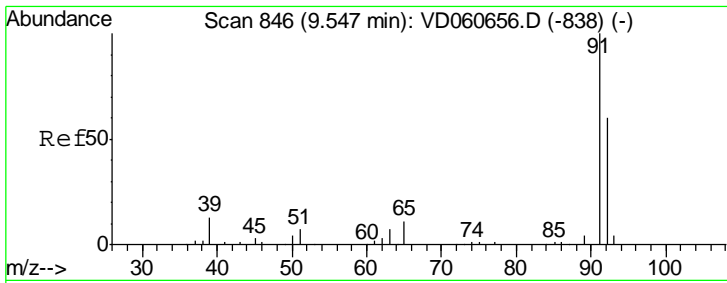
Tgt Ion	Resp	Lower	Upper
43	1451		
61	0.0	21.8	32.8#
87	0.0	0.2	0.4#



#50
 Toluene-d8
 Concen: N.D. ug/l
 RT: 9.42 min Scan# 833
 Delta R.T. -0.04 min
 Lab File: VD060739.D
 Acq: 27 Dec 2018 21:10

Tgt Ion	Resp	Lower	Upper
98	180511		
100	68.2	55.8	83.8

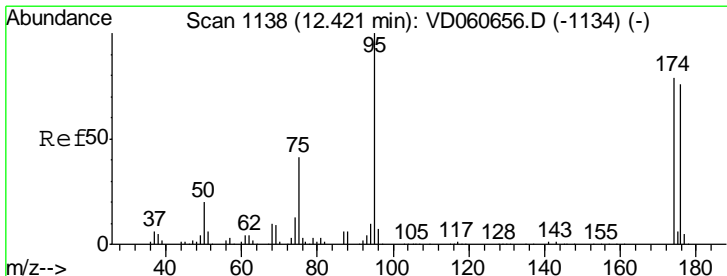
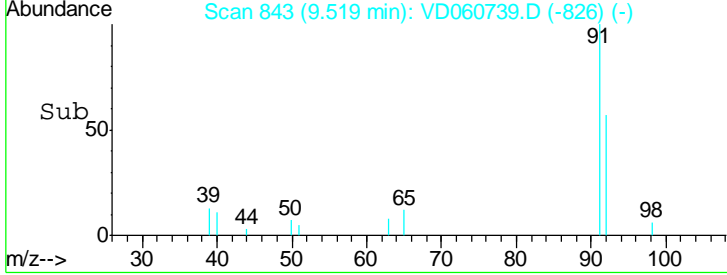
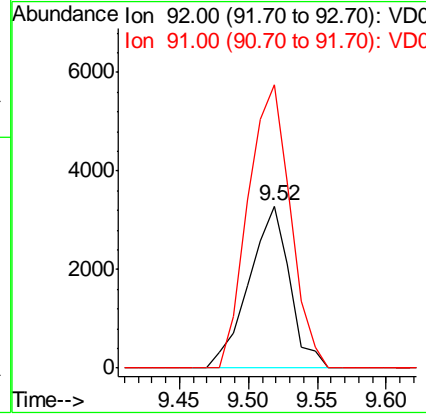
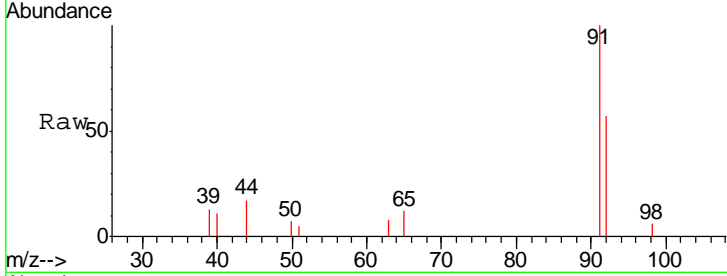




#52
 Toluene
 Concen: 2.145 ug/l
 RT: 9.52 min Scan# 843
 Delta R.T. -0.03 min
 Lab File: VD060739.D
 Acq: 27 Dec 2018 21:10

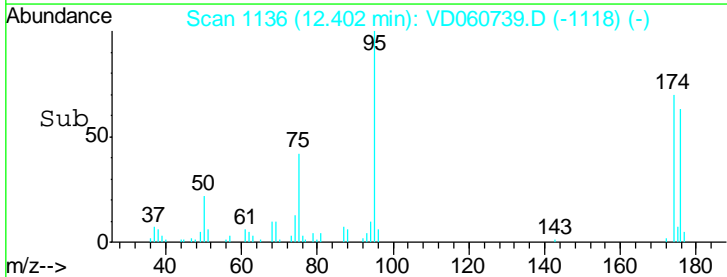
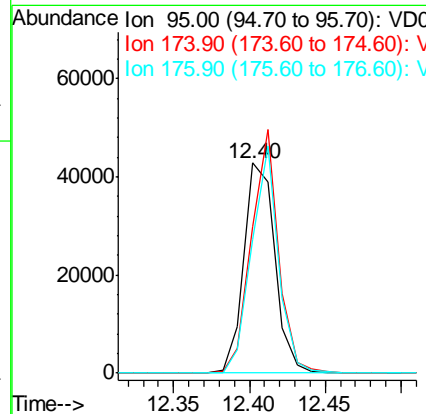
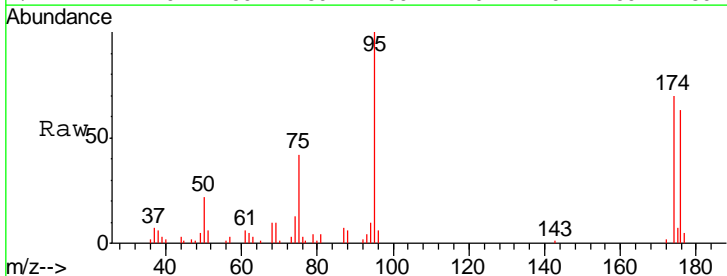
Instrument :
 MSVOA_D
ClientSampled :
 P001-SS025-1218-01RE

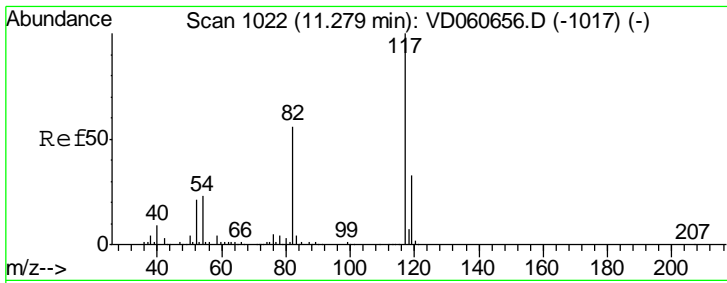
Tgt Ion: 92 Resp: 6782
 Ion Ratio Lower Upper
 92 100
 91 174.5 132.6 199.0



#62
 4-Bromofluorobenzene
 Concen: N.D. ug/l
 RT: 12.40 min Scan# 1136
 Delta R.T. -0.02 min
 Lab File: VD060739.D
 Acq: 27 Dec 2018 21:10

Tgt Ion: 95 Resp: 61034
 Ion Ratio Lower Upper
 95 100
 174 69.6 0.0 158.2
 176 63.4 0.0 152.4

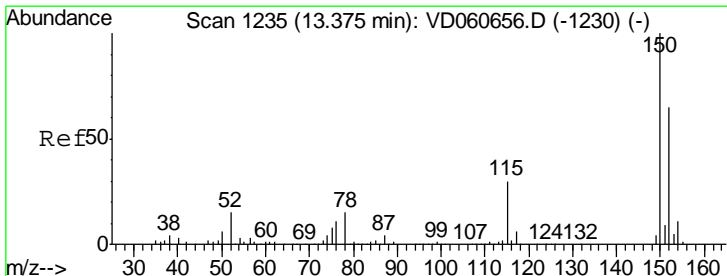
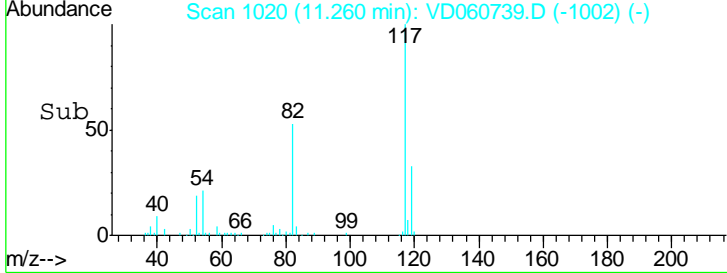
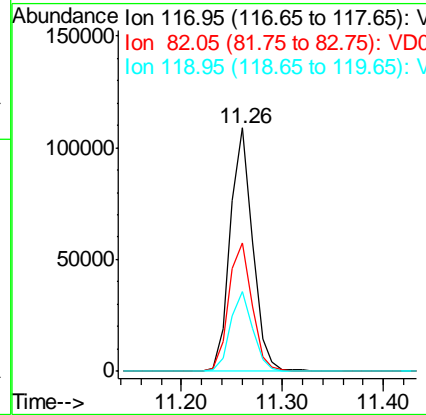
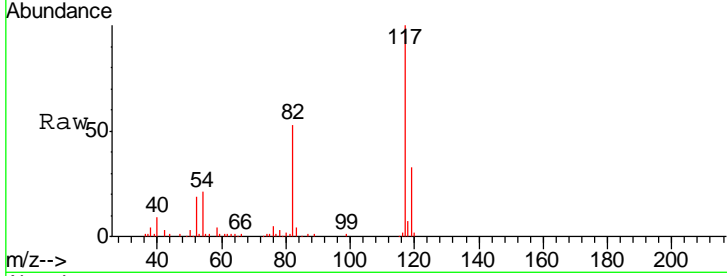




#63
 Chlorobenzene-d5
 Concen: 50.000 ug/l
 RT: 11.26 min Scan# 1020
 Delta R.T. -0.02 min
 Lab File: VD060739.D
 Acq: 27 Dec 2018 21:10

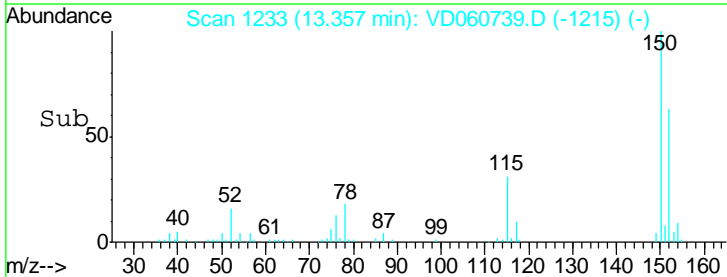
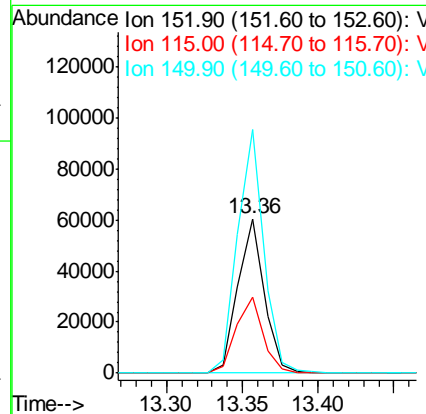
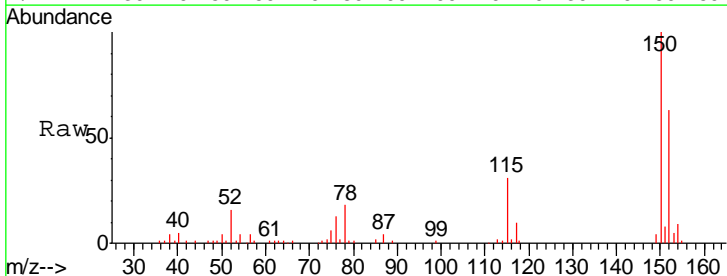
Instrument : MSVOA_D
 ClientSampleId : P001-SS025-1218-01RE

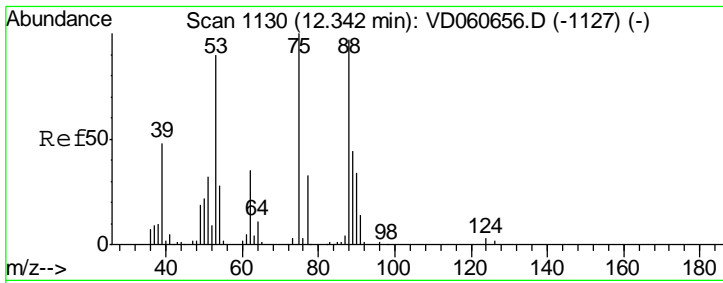
Tgt Ion	Resp	Lower	Upper
117	167950		
82	53.0	44.5	66.7
119	32.9	26.3	39.5



#72
 1,4-Dichlorobenzene-d4
 Concen: 50.000 ug/l
 RT: 13.36 min Scan# 1233
 Delta R.T. -0.02 min
 Lab File: VD060739.D
 Acq: 27 Dec 2018 21:10

Tgt Ion	Resp	Lower	Upper
152	73367		
115	49.3	24.1	72.3
150	157.9	0.0	315.0

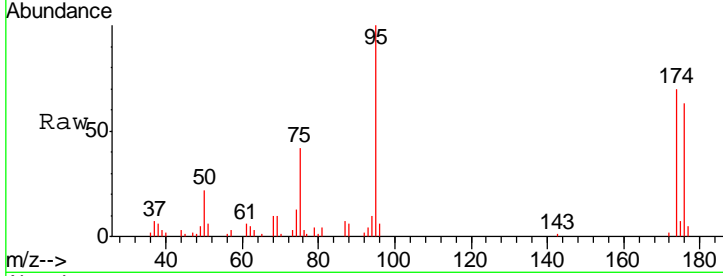




#81
 trans-1,4-Dichloro-2-butene
 Concen: 113.598 ug/l
 RT: 12.40 min Scan# 1136
 Delta R.T. 0.06 min
 Lab File: VD060739.D
 Acq: 27 Dec 2018 21:10

Instrument : MSVOA_D
 ClientSampleId : P001-SS025-1218-01RE

Tgt Ion	Resp	Lower	Upper
75	100		
53	0.0	72.1	108.1#
89	0.0	35.1	52.7#



Abundance Ion 75.00 (74.70 to 75.70): VDC
 Ion 53.00 (52.70 to 53.70): VDC
 Ion 89.00 (88.70 to 89.70): VDC

